



RESEARCH ARTICLE

Autoimmune encephalomyelitis in NOD mice is not initially a progressive multiple sclerosis model

David Baker¹ , Erik Nutma², Helen O'Shea^{3,a}, Anne Cooke³, Jacqueline M. Orian⁴ & Sandra Amor^{1,2} ¹BartsMS, Blizard Institute, Barts and the London School of Medicine and Dentistry, Queen Mary University of London, London, E1 2AT, United Kingdom²Department of Pathology, Amsterdam UMC, Location VUmc, Amsterdam 1081HV, The Netherlands³Department of Pathology, University of Cambridge, Cambridge CB2 1QP, United Kingdom⁴La Trobe Institute of Molecular Sciences La Trobe University, Bundoora, Victoria 3086, Australia

Correspondence

Sandra Amor, Department of Pathology, Amsterdam UMC, Location VUmc, 1081HV Amsterdam, The Netherlands.
Tel: +31204442898; E-mail: s.amor@vumc.nl
David Baker, BartsMS, Blizard Institute, Barts and the London School of Medicine and Dentistry, Queen Mary University of London, 4 Newark Street, London E1 2AT.
Tel: +442078822485; Fax: +442078822180; E-mail: david.baker@qmul.ac.uk

Present address

^aDepartment of Biological Sciences, Cork Institute of Technology, Cork, Ireland

Funding Information

The authors thank the support from the Wellcome Trust, Medical Research Council, Multiple Sclerosis Society (UK), National Multiple Sclerosis Society (USA) Grant number RG4132A5/1 and the Stichting MS Research, The Netherlands.

Received: 29 January 2019; Revised: 12 April 2019; Accepted: 23 April 2019

Annals of Clinical and Translational Neurology 2019; 6(8): 1362–1372

doi: 10.1002/acn3.792

Introduction

Multiple sclerosis (MS) is an immune-mediated, demyelinating disease of the central nervous system (CNS).¹ This typically follows a relapsing-remitting disease course often followed by the accumulation of progressively worsening neurological disability.¹ Active neurological disease in MS² and disease in the experimental autoimmune encephalomyelitis (EAE) model of MS is driven by the consequences of the peripheral, adaptive immune

Abstract

Objective: Despite progress in treating relapsing multiple sclerosis (MS), effective inhibition of nonrelapsing progressive MS is an urgent, unmet, clinical need. Animal models of MS, such as experimental autoimmune encephalomyelitis (EAE), provide valuable tools to examine the mechanisms contributing to disease and may be important for developing rational therapeutic approaches for treatment of progressive MS. It has been suggested that myelin oligodendrocyte glycoprotein (MOG) peptide residues 35–55 (MOG^{35–55})-induced EAE in nonobese diabetic (NOD) mice resembles secondary progressive MS. The objective was to determine whether the published data merits such claims. **Methods:** Induction and monitoring of EAE in NOD mice and literature review. **Results:** It is evident that the NOD mouse model lacks validity as a progressive MS model as the individual course seems to be an asynchronous, relapsing-remitting neurodegenerative disease, characterized by increasingly poor recovery from relapse. The seemingly progressive course seen in group means of clinical score is an artifact of data handling and interpretation. **Interpretation:** Although MOG^{35–55}-induced EAE in NOD mice may provide some clues about approaches to block neurodegeneration associated with the inflammatory penumbra as lesions form, it should not be used to justify trials in people with nonactive, progressive MS. This adds further support to the view that drug studies in animals should universally adopt transparent raw data deposition as part of the publication process, such that claims can adequately be interrogated. This transparency is important if animal-based science is to remain a credible part of translational research in MS.

response entering the CNS.³ This is supported not only by radiological and pathological findings, but most importantly, by the response to therapy.^{4–7} Although progressive MS may also respond to similar immunotherapy provided there is sufficient neurological reserve in the nerve-tracks affected,^{8–10} other factors such as innate immune responses are thought to be of central importance in progressive neurodegeneration.¹¹ This concept underpins the perceived treatment-failure of immunotherapy in advanced (progressive) MS, where replacement of

peripheral immunity, which stops relapses, does not always halt accumulation of disability.^{8,9,12,13} Therefore, there is an urgent need for model systems that can be used to identify the pathological mechanism operating in progressive disease as well as to design and test new therapeutics.

Experimental autoimmune encephalomyelitis in animals is a group of experimentally induced autoimmune diseases with some similarities to MS.^{14,15} Some of the EAE models are associated with the development of relapsing, immune-mediated demyelination disease^{14,16} and may show slow accumulation of disability that is independent of relapses and peripheral autoimmunity.^{17–20} The nonobese diabetic (NOD) mouse develops spontaneous or induced diabetes and other endocrine gland-associated autoimmunities.^{21–23} This mouse strain has also been reported to develop progressive neurological disease that mimics progressive MS.^{24,25} Progressive worsening appears to develop within 20–30 days postinduction following immunization with myelin oligodendrocyte glycoprotein (MOG) peptide residues 35–55 (MOG^{35–55}).^{24–31} Thus, this EAE model could have significant utility for screening potential neuroprotective and repair agents.^{24,27–31} Here, we have investigated the response of NOD mice to various autoantigens to assess the validity of this system to model progressive MS. In contrast to some of the published literature indicating the progressive nature of early MOG^{35–55} induced EAE in NOD mice, we found no evidence that this model exhibits a progressive worsening independent of relapsing disease indicating that existing data are an artifact of data handling and interpretation. Therefore, this model should not be used to justify any human trials in nonrelapsing progressive MS.

Methods

Animals

NOD/Lt (NOD), NOD.H2Ea (NOD-E) mice expressing a transgenic H-2A alpha chain allowing expression of H-2E^{g7} and NOD.H2Ab^{Asp} (NOD-ASP) mice expressing a modified H-2A beta with a serine to aspartic acid substitution at position 57 were from stock bred at the University of Cambridge.²² These mice failed to develop diabetes during the course of these studies. Animals were housed and used according to the Animals (Scientific Procedures) Act 1986, which induces review by the local Animal Welfare and Ethical Review Body and the United Kingdom Government, Home Office Inspectorate. In addition, NOD/ShiLtJ mice were from stock bred at the La Trobe University.³² Animal procedures were approved by the Institutional Animal Care and Use Committee at the La Trobe Institute, Australia.^{23,32}

Experimental autoimmune encephalomyelitis

Animals (11–15 week) were injected subcutaneously with 1 mg mouse spinal cord homogenate (SCH),¹⁶ 200 μ g mouse proteolipid protein residues 56–70 (PLP^{56–70}) peptide^{33,34} or 200 μ g MOG residues 8–22 (MOG^{8–22}) peptide^{34,35} emulsified in Freund's adjuvant supplemented with 60 μ g *Mycobacterium tuberculosis* and *M. butyricum* on day 0 and 7.¹⁶ Animals were injected intraperitoneally with 200 ng *Bordetella pertussis* toxin immediately and 24 h after each injection of antigen, as described previously.^{16,32,33} These are the immunodominant myelin peptides associated with H-2A^{g7} reactivity in ABH mice.^{33–35} Animals were scored as 0 = normal; 1 = limp tail; 2 = impaired righting reflex; 3 = hindlimb paresis; 4 = hindlimb paralysis; 5 = moribund (endpoint) as described previously.^{16,33} Alternatively, animals (9–12 week) were immunized with 200 μ g MOG residues 35–55 (MOG^{35–55}) peptide emulsified in Freund's complete adjuvant supplemented with 4 mg/mL *M. tuberculosis* on day 0 and 350 ng intravenous *B. pertussis* toxin on day 0 and day 2.^{23,32} These mice were scored as: 0 = no signs, 1 = limp tail, 2 = hindlimb weakness, 3 = hindlimb weakness with at least one paralyzed hindlimb, 4 = paralysis of both hindlimbs and weakness of one forelimb, 5 = moribund.²³ Animals were randomly assigned to treatments and the studies were scored blinded to induction agent. Groups contained a minimum of five animals/group which was sufficient to perform statistical analysis and experimental elements relevant to the ARRIVE guidelines have been reported previously.^{13,15} Raw data supplied as Data S1.

Statistical analysis

Data were analyzed using Sigplot (Systat Software Inc, London) and expressed as mean \pm standard error of the mean. For EAE group clinical scores and day of disease onset were assessed by Mann–Whitney U tests. Group EAE score represents the maximal neurological deficit in all animals within the group and mean EAE score the maximal neurological deficit developed by mice that exhibited EAE, as previously described.^{33,36} *P* values < 0.05 were considered significant.

Results

Biozzi ABH mice (H2^{dq1}: K^d, A^{g7}, E⁻, D^q) are susceptible to a number of induced autoimmunities³⁷ exhibit high-susceptibility to SCH-induced EAE compared to NOD (H2^{g7}:K^d, A^{g7}, E⁻, D^b) mice, which share the diabetogenic H-2A^{g7} molecule.^{37,38} However, NOD mice can show

comparable susceptibility to other induced autoimmunities when *B. pertussis* toxin is used as adjuvant.³⁹ The immunodominant epitopes associated with the development of EAE in ABH mice are proteolipid protein (PLP⁵⁶⁻⁷⁰) and myelin oligodendrocyte glycoprotein (MOG⁸⁻²²) peptides.^{33,34} However, wild-type NOD mice only exhibited modest susceptibility ($n = 9/13$) to SCH-induced EAE (Fig 1; Table 1), with disease that had poor consistency in severity (range of maximum severity grade 0.5–4 $n = 9$) and day of onset (range 14–49, $n = 9$). Of those mice that developed disease 6/9 developed relapses by day 63 and none showed a slow progressive worsening of disease. Similarly, MOG⁸⁻²² peptide induced disease in 13/14 mice, which largely relapsed ($n = 9/13$), and again no escalating progressive disease was evident. Interestingly, it was found that wild-type mice poorly responded to PLP⁵⁶⁻⁷⁰ peptide and only 5/13 (38.5%) mice developed low-grade EAE (Table 1). Likewise, NOD.ASP mice developed low-grade EAE (Fig. 1). However, NOD-E mice exhibited significantly ($P < 0.001$) more severe disease than wild-type mice immunized with PLP⁵⁶⁻⁷⁰, as described previously.⁴⁰ This was evident when the group score (2.1 ± 0.3 vs. 0.5 ± 0.2 ; $P < 0.001$) and the EAE score (2.3 ± 0.3 vs. 1.2 ± 0.2 ; $P < 0.05$) were analyzed (Table 1). Although some NOD-E mice relapsed, there was no evidence of progressive worsening.

Previous studies have examined the encephalitogenic response to MOG³⁵⁻⁵⁵ in NOD mice.^{24,41} This is a subdominant MOG peptide in both the ABH (H-2^{g7}) and C57BL/6 (H-2^b) mice.^{34,42} This peptide tends to induce a monophasic chronic EAE in ABH and C57BL/6 mice, where there is poor recovery following a single attack.^{42–44} This is consistent with the neurodegenerative nature of the attacks.⁴⁵ Therefore, the effect of MOG³⁵⁻⁵⁵ peptide was not assessed in the initial studies (Fig. 1). An apparent progressive worsening of neurological signs can be observed when analyzing the group means of ABH animals with SCH-induced EAE,¹⁶ yet it is clear that in individual mice the course of disease is relapsing-remitting that responds to T-cell immunotherapy.^{16,17,46} The apparent continuing worsening of disease is simply due to the occurrence of asynchronous relapses with increasingly poor recovery due to the neurodegenerative effects of the inflammatory penumbra.^{16,19,20,46} This may explain the disease course reported in NOD mice.^{24–31}

Therefore, to avoid unnecessary use of animals, the literature was investigated further. Indeed, the first descriptions of MOG³⁵⁻⁵⁵ reported that the disease in NOD mice was relapsing and remitting.^{23,41,47} Importantly, when the data from individual animals are examined it is clear that disease was largely relapsing and remitting and not progressive⁴⁸ and was confirmed here using available data (Fig. 2). Thus the apparent progressive worsening was

largely due to asynchronous relapses with poor recovery (Fig. 2). The relapsing nature of EAE in NOD mice was reproducibly supported by the results from different laboratories.^{23,47–49} Indeed, the literature (Fig. 3) indicates that defining MOG-induced EAE in NOD mice as progressive, is a misinterpretation and misrepresentation of what actually is a neurodegenerative, relapsing disease profile.^{26,45}

Discussion

This study demonstrates that MOG-induced EAE in NOD mice induces a relapsing disease course that is not reflective of chronic, progressive MS in its early phases. This is consistent with the original description of MOG³⁵⁻⁵⁵-induced disease in NOD/Lt mice as being a relapsing-remitting disease.⁴¹ However, when mice were followed for up to several months longer it was reported that disease might become chronically progressive as animals accumulate disability.⁴⁷ However, with the urgent unmet clinical need to develop treatment options for advanced MS, MOG³⁵⁻⁵⁵ induced EAE has become used as a “progressive EAE” model that purportedly resembles secondary progressive MS.^{24,25,48} This clinical progression appears to begin from about day 20 after immunization when it is used to test therapeutics for use in progressive MS.^{24–31} However, through literature review and as shown here, the same clinical course has been reported to be a form of chronic relapsing EAE.^{23,48–50} At the cellular level, CD4 T cells from MOG³⁵⁻⁵⁵ T-cell receptor (TCR^{MOG})-specific transgenic NOD mice, that select CD4 and CD8 T cells, induce a phenotypic progressive disease in NOD.*Scid* mice, similar to that reported using MOG³⁵⁻⁵⁵ immunized wild-type NOD mice.⁵¹ However, based on the disease occurring following active immunization in NOD.TCR^{MOG} mice, it is clearly evident that a relapsing-remitting course developed.⁵¹ Indeed, the initial disease was described to be of mild severity that completely resolved followed by relapse of greater severity that did not resolve completely.⁵¹ Histologically, every attack is associated with the development of severe immune-infiltration⁵² and thus lacks evidence of progression without significant blood–brain barrier dysfunction similar to progressive MS.⁵³ Importantly, the pathology demonstrates that these immune attacks cause significant neurodegeneration, consistent with EAE in other mouse strains including C57BL/6 mice,^{16,36,45} leading to persistent disability that often increases with each cycle of neurological attack. Thus the concept of progressive worsening in the clinical score of NOD mice, is a misrepresentation of what is clearly an asynchronous-neurodegenerative, relapsing EAE.

Such relapses, driven by T cells^{17,51} will of course respond to immunotherapy. This could limit the

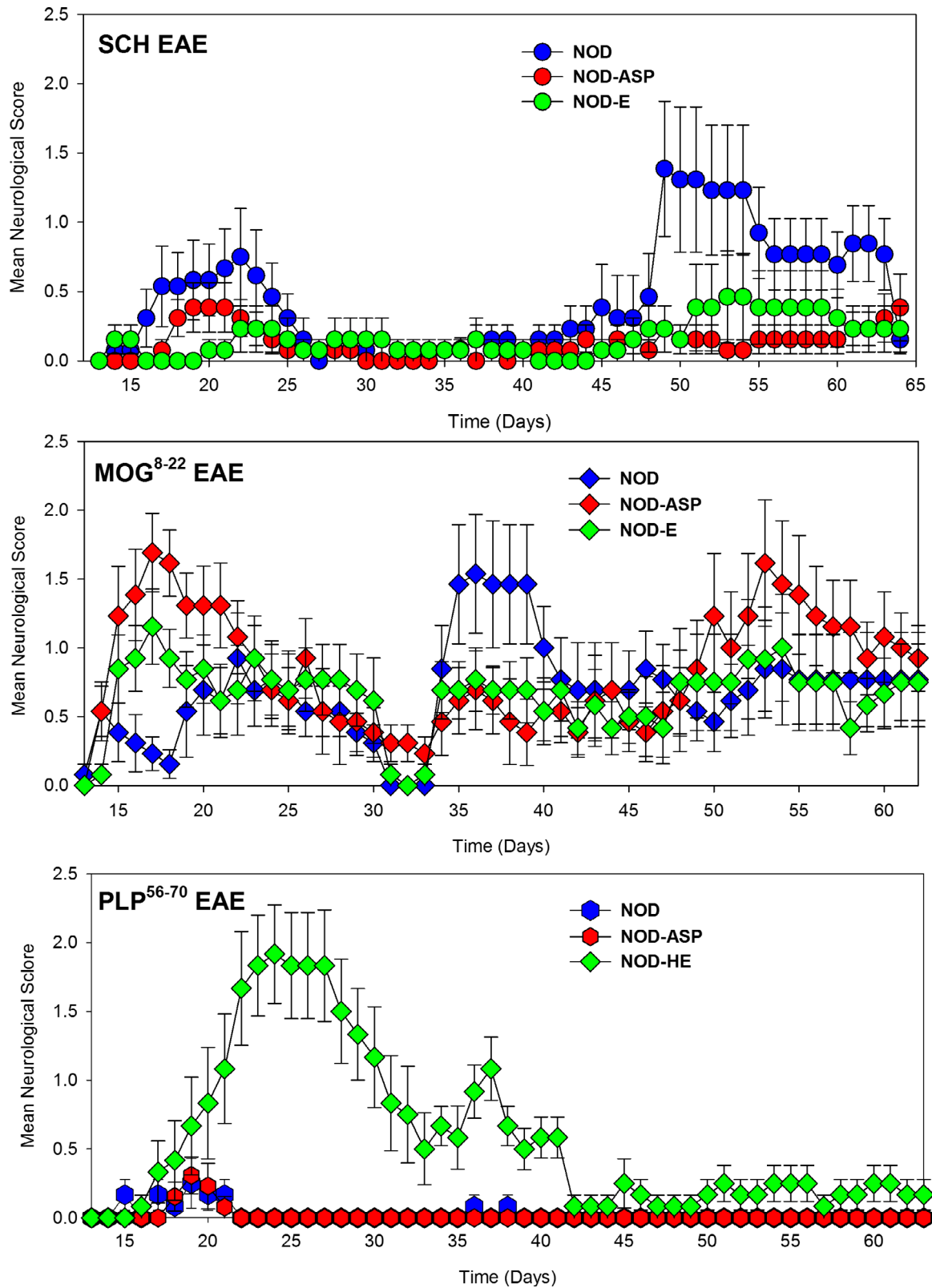


Figure 1. Induction of EAE in NOD mice using myelin peptides. EAE was induced by subcutaneous injection of neuroantigen in Freund's adjuvant and using *B.pertussis* toxin as coadjuvant. The results represent the group mean daily \pm SEM.

Table 1. Disease susceptibility of transgenic nonobese diabetic mice to myelin antigens

Strain	Immunogen	No. EAE	Group Score	EAE Score	Day of Onset
NOD	SCH	9/13	2.0 ± 0.5	2.8 ± 0.5	27.1 ± 14.9
NOD	MOG ⁸⁻²²	13/14	1.5 ± 0.3	1.7 ± 0.3	17.3 ± 6.4
NOD	PLP ⁵⁶⁻⁷⁰	5/13	0.5 ± 0.2	1.2 ± 0.2	20.6 ± 9.3
NOD-E	PLP ⁵⁶⁻⁷⁰	11/12**	2.1 ± 0.3***	2.3 ± 0.3*	21.6 ± 4.7
NOD	MOG ³⁵⁻⁵⁵	14/14	2.3 ± 0.1 [#]	2.3 ± 0.1 [#]	13.2 ± 3.1

EAE was induced by subcutaneous injection of neuroantigen in Freund's adjuvant and using *B. pertussis* toxin as coadjuvant. The results represent the mean maximum group score of the first episode ± SEM; the mean maximum score of animals that developed EAE during the first episode ± SEM and the mean day of onset ± SD. The NOD mice immunized with SCH, MOG⁸⁻²² or PLP⁵⁶⁻⁷⁰ were from stock based in the United Kingdom. The NOD mice immunized with MOG³⁵⁻⁵⁵ peptide were from different stock based in Australia and [#]the scoring system used was different.

* $P < 0.05$; ** $P < 0.01$, *** $P < 0.001$ compared to wild-type mice.

generation of neurodegeneration by prevention of lesion formation or by inhibiting the consequence of the inflammatory penumbra that is associated with the formation of lesions in the central nervous system.^{20,45,54} Indeed, MOG³⁵⁻⁵⁵ induced NOD mouse EAE responds to prophylactic and therapeutic T-cell tolerance induction and T-cell immunotherapy.^{26,27} However, that these approaches have largely failed to markedly influence nonactive, progressive MS, demonstrates that the model as used, probably has no or limited validity and predictive value for efficacy in nonactive, progressive MS.^{12,13,55,56} Therefore, the model should not be used to justify any clinical trials in nonrelapsing, progressive MS.²

Any agent that diminishes the frequency of attacks and reduces their severity will be potentially secondarily neuroprotective, as seen in both EAE and MS.^{3,57} In addition, the inflammatory penumbra occurring during active EAE and MS is damaging and can cause nerve loss.^{45,54,58,59} As such, it is sometimes difficult to dissociate direct neuroprotective effects against the inflammatory penumbra from secondary neuroprotection due to immunomodulation that prevents lesion formation. This is particularly the case when treating during active paralytic disease and monitoring recovery,^{3,54,60} such as that occurring in monophasic, neurodegenerative MOG-induced EAE in C57BL/6 mice.^{43,61} Although one can show that agents are not immunosuppressive in vitro, drugs that interfere with nervous system signaling can cause adverse effects in vivo, although these are seldom reported in animal studies.^{3,60,62} Such drugs that interfere with neuronal signaling could induce a stress response that could be immunosuppressive. Thus, it is imperative that these influences are avoided if insight into neuroprotection is required.^{3,60,62} This is because, while immunomodulation of the adaptive immune response may be of benefit for active progressive MS,^{3,8-10} it cannot adequately inform about effects operating in nonactive progressive MS.² Until this aspect is appreciated by experimental biologists and clinicians, we will fail to adequately model

progressive MS and continue to fail to translate ideas into human benefit.

Although not reported here, our previous studies have reported the histological profile of EAE in NOD mice.²² This is consistent with other mouse strains that demonstrate a dynamic degree of adaptive immune cells infiltration as clinical disease develops and wanes.^{22,36} Glial cell inflammation is thought to be part of the substrate for slow progressive nerve loss in MS.¹¹ However, the loss of axons and myelin, accumulation of microglial activation and gliosis reported in progressive EAE models,²⁴⁻³¹ is not qualitatively different from that found following the accumulation of disability from relapsing EAE in mice.^{20,36} This perhaps is not surprising as monophasic or relapsing inflammatory disease activity probably creates and conditions the neurodegenerative environment that leads to the slow loss nerve loss, which does not respond rapidly to agents that target relapsing disease.¹⁷⁻²⁰ Progressive neurodegenerative pathology, driven by glial cells, initially coexists with adaptive immune inflammation driving active attacks, but becomes more dominant with disease duration as relapses wain, as occurs in NOD mice with long disease duration.^{22,47}

Given the deficits that NOD mice accumulate due to relapsing attacks, it is likely that slow progressive disease eventually develops, as a similar disease course is observed in SCH-induced EAE in ABH.^{17,18,23} Following accumulation of deficit from relapsing attacks, animals exhibit slow clinical worsening and nerve loss, weeks to months after disease induction, which is not responsive to peripheral immunosuppression.¹⁷⁻²⁰ Although this degenerative process is occurring following initial attacks,²⁰ this becomes notably evident during the postattack period that occurs following monophasic EAE that occurs in MOG³⁵⁻⁵⁵-induced EAE in C57BL/6,^{43,44} chronic relapsing EAE in ABH^{17,18} and possibly NOD mice.^{23,47} It is possible that subtle differences in the genetics of the animals, age, sex, microbiome content, and breeding facility could account for the differences in

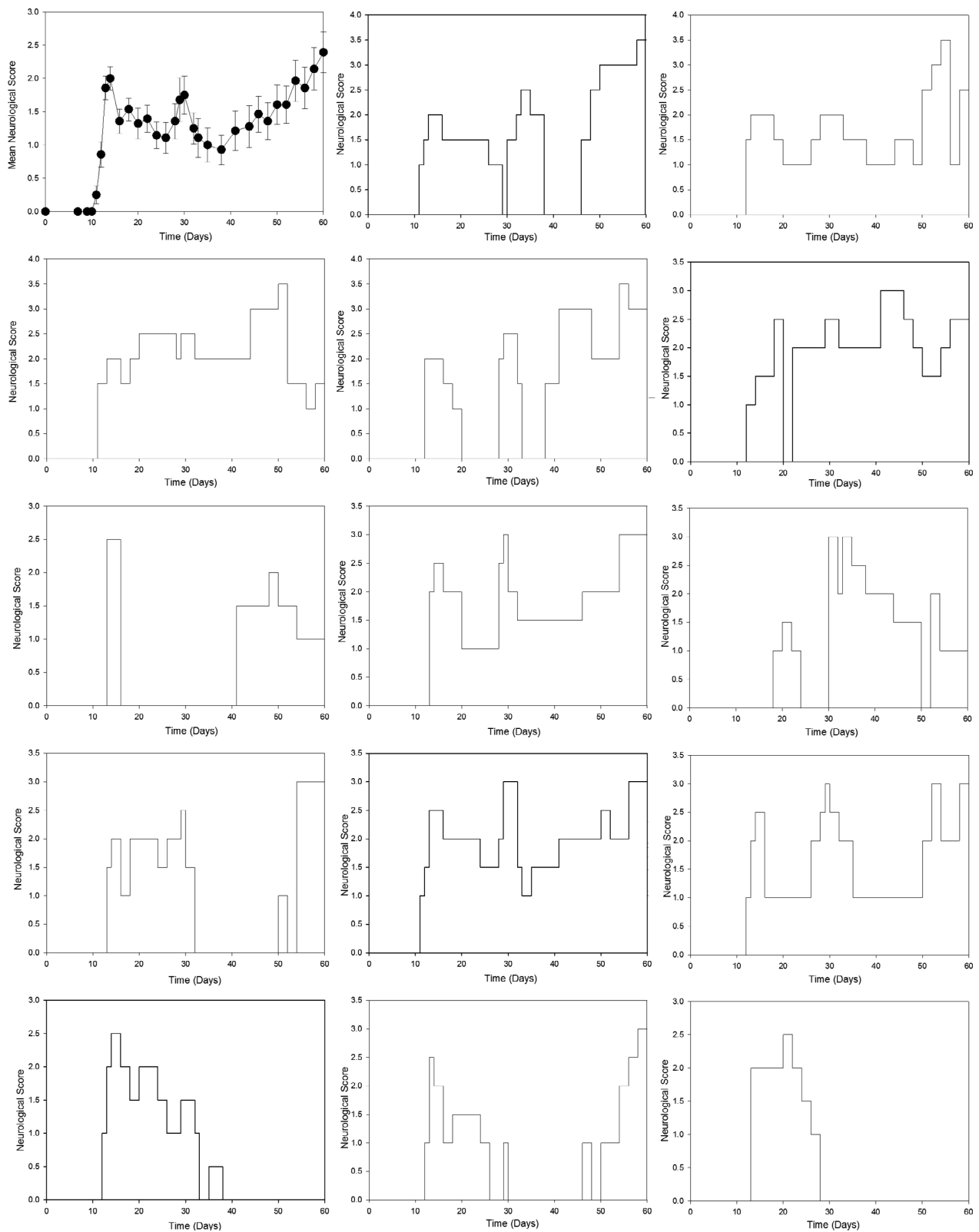


Figure 2. Individual disease courses in NOD mice. NOD mice were immunized with 200 μ g MOG³⁵⁻⁵⁵ and 4 mg/mL complete Freund's adjuvant. The results represent the group mean \pm SEM neurological score ($n = 14$) and the individual scores over time.

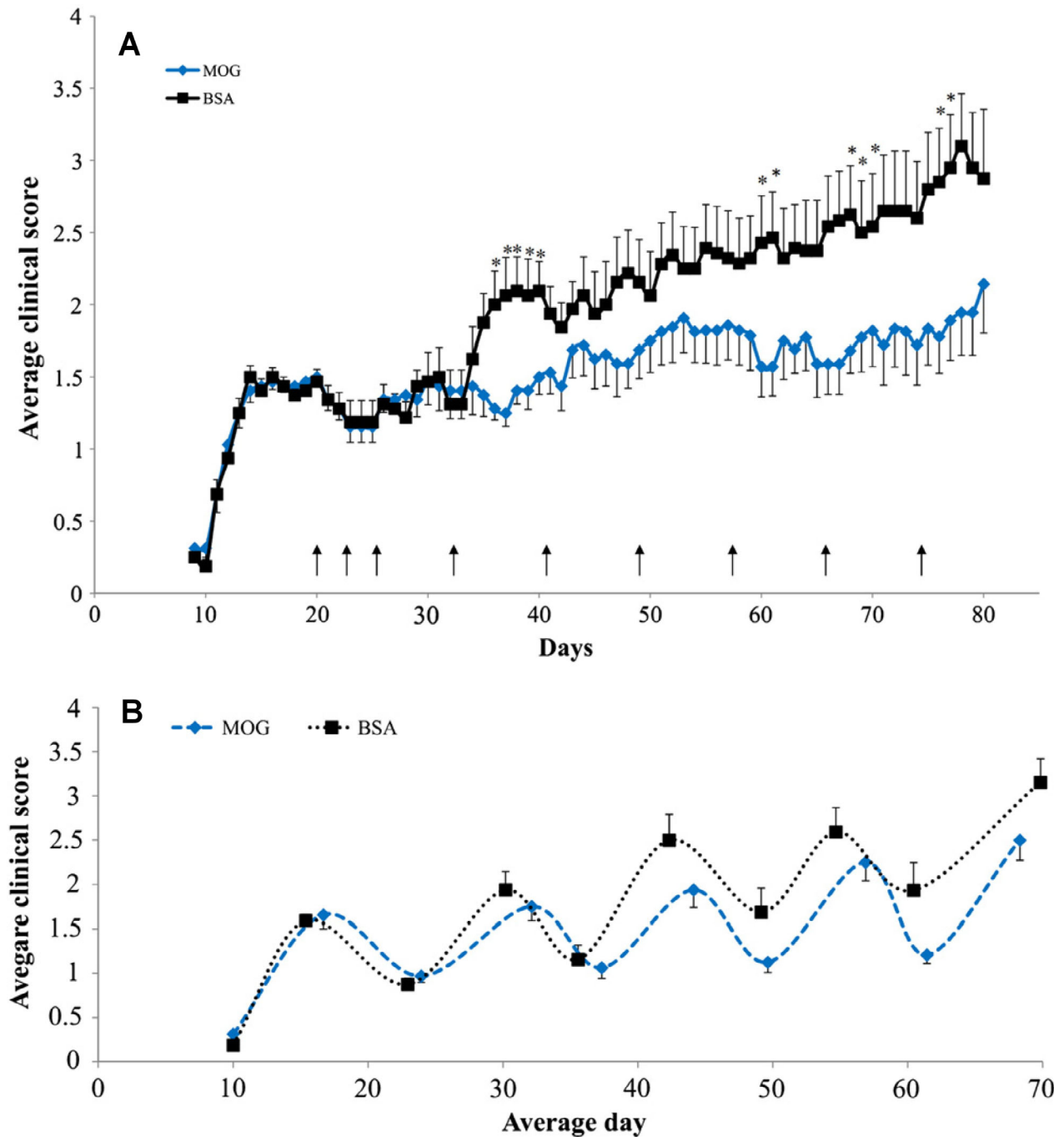


Figure 3. Progressive worsening of EAE disease in NOD mice is a misrepresentation of relapsing-remitting EAE. NOD mice were immunized with 150 μ g MOG³⁵⁻⁵⁵ and 4 mg/mL complete Freund's adjuvant in the progressive EAE model. (A) The results demonstrating a progressive worsening was shown using a mean daily group score \pm SEM. These mice were treated (arrow) with MOG³⁵⁻⁵⁵ nasal tolerance or bovine serum albumin (BSA) peptide as control. Differences between the groups are shown. * $P < 0.05$ assessed using a Student's t test. While a t test is not appropriate for such nonparametric data,^{3,68} the lack of consistent statistical differences demonstrates the fluctuating nature of the individual data points that form the group score. (B) As each mouse had a relapse and remission at different time points, the average clinical score of each relapse and remission was calculated, clearly showing disease is relapsing remitting.²⁶ Figures are reproduced from Levy Barazany H et al. *Exp Neurol* 2014; 255:63-70²⁶; doi.org/10.1016/j.expneurol.2014.02.010 with permission from Elsevier.

the clinical profile reported here and as shown previously by us²³ and that reported by others.^{24–31} Indeed, in some of our studies, male and older mice tolerate inflammatory insults less well and accumulate nerve loss and deficits leading to the slow accumulation of progressive disability, even following a single attack.^{54,63,64} In our experience this deficit accumulates slowly^{17,18} and was reported to occur in NOD mice months, not weeks after disease development.^{23,47} Age and sex, however, are unlikely to account for differences in the clinical course observed here, as they were comparable²³ to those reported for rapidly evolving secondary progressive EAE.^{23–26} In our experience, this progressive worsening is not readily captured by the typical subjective, nonlinear, scoring of paralysis of the hindlimbs and tail often used to assess the severity of EAE in animals.^{16,23,43,47} As such, neurological disease eventually plateaus in mouse EAE and remains stable over months.^{18,23,43,46,47} This may change very slowly just as observed in humans.^{8,17,65} However, other objective outputs such as spasticity and mobility changes can detect slow, worsening over time.^{17,18} Similarly, although cuprizone-induced demyelination and subsequent neurodegeneration was widely assumed to be nonclinical, through analysis of alternative objective outcome measures clinical deterioration can be detected.^{64,66} Therefore, it may be possible that existing models, if used wisely, such as avoiding treatment during the periods of active attacks, could be used to identify candidate agents that may be of value in controlling nonrelapsing progressive MS. Alternatively models that mirror aspects of progressive MS can be developed to facilitate a mechanism-based targeting of neurodegenerative disease in MS.

The process of the refinement, reduction, and replacement of animal use in research, which defines the ethical use of animals in research, means that animal experiments should have value in uncovering human biology and we should particularly strive to limit the number of animals used in severe procedures. EAE is such a severe procedure and thus should not be used if less-severe systems, or shorter disease durations, can address the same central hypothesis. We have already seen that there has been poor translation of animal studies into the treatment of relapsing MS.⁶⁷ It is important that we do better in finding treatments for progressive MS. The definition of EAE in NOD mice as a progressive model appears to be based on the trajectory of the mean disease scores, but it is clear from this study that this description is a misrepresentation of the disease course of individual mice. We have made the case previously that it is essential that more information such as maximum and minimum score and number of animals with disease be presented such that graphs of group disease scores can be better

interpreted.^{3,68} This, however, ultimately requires access to the raw data.

Access to the source data is being requested of clinical trials (www.clinicalstudydatarequest.com) to limit data hacking and hiding.^{4,69} Although some journals are requesting statements that data are accessible, in the electronic age there is now no barrier to depositing raw data in workable spreadsheets. This is because a statement of supply of raw data can be hollow and unenforced. With deposition of raw data during submission of manuscripts such data can be interrogated by the reviewers and the readers. This would thus make the preclinical space more responsive and reproducible, as poor quality data are less likely to be submitted or published and can more quickly be challenged, avoiding the need to replicate studies.^{3,15,68} This is important as there is sometimes a lack of quality control in EAE studies where the data from control groups may be highly inconsistent and appears to sometimes fluctuate depending on whether an experimental-treatment aims to find an augmentation or inhibition of disease.^{70,71} This, coupled with poor-reporting, notably of bias reduction, and data handling that can influence outcomes can lead to overinterpretation of data that is probably of marginal biological significance.^{3,62,67,72,73} Experimental data lacking quality control are not likely to be reproducible between laboratories, let alone between other strains/species and importantly have translational value for human studies.³ There have been many translational failures and only two of the 15 licensed treatments for MS had their origins in preclinical MS studies, although the majority of the other licensed treatments have subsequently been found to reduced EAE severity.^{15,67,73} It is therefore important that preclinical studies are used in a way to reflect the clinical indication, if they are to have translational value.^{3,15,73} Given the drive to perform more humane animal studies, notably to limit severe procedures in animals, there is no place for science that causes unnecessary animal suffering. Learned societies and governments need to lead journals to universally adopt transparent data deposition if animal-based translational neuroscience is to remain a credible part of research.

Acknowledgments

The authors thank the support from the Wellcome Trust, Medical Research Council, Multiple Sclerosis Society (UK), National Multiple Sclerosis Society (USA) Grant number RG4132A5/1 and the Stichting MS Research, The Netherlands.

Conflict of Interest

There is nothing relevant to declare.

Author Contribution

Concept: DB, SA; Funding: SA, AC, DMO; Data Acquisition: SA, KOS, DMO. Data Analysis & presentation: DB, SA, EM; Manuscript: All.

References

- Compston A, Coles A. Multiple sclerosis. *Lancet* 2002;359:1221–1231.
- Lublin FD, Reingold SC, Cohen JA, et al. Defining the clinical course of multiple sclerosis: the 2013 revisions. *Neurology* 2014;83:278–286.
- Baker D, Gerritsen W, Rundle J, Amor S. Critical appraisal of animal models of multiple sclerosis. *Mult Scler* 2011;17:647–657.
- Baker D, Herrod SS, Alvarez-Gonzalez C, et al. Interpreting lymphocyte reconstitution data from the pivotal phase 3 trials of alemtuzumab.3. *JAMA Neurol* 2017;74:961–969.
- Cohen JA, Coles AJ, Arnold DL, et al. Alemtuzumab versus interferon beta 1a as first-line treatment for patients with relapsing-remitting multiple sclerosis: a randomised controlled phase 3 trial. *Lancet* 2012;380:1819–1828.
- Hauser SL, Bar-Or A, Comi G, et al. Ocrelizumab versus Interferon Beta-1a in Relapsing Multiple Sclerosis. *N Engl J Med* 2017;376:221–234.
- Muraro PA, Pasquini M, Atkins HL, et al. Multiple Sclerosis-Autologous Hematopoietic Stem Cell Transplantation [MS-AHSCT] Long-term Outcomes Study Group. Long-term outcomes after autologous hematopoietic stem cell transplantation for multiple sclerosis. *JAMA Neurol* 2017;74:459–469.
- Giovannoni G, Cutter G, Sormani MP, et al. Is multiple sclerosis a length-dependent central axonopathy? The case for therapeutic lag and the asynchronous progressive MS hypotheses. *Mult Scler Relat Disord* 2017;12:70–78.
- Montalban X, Hauser SL, Kappos L, et al. Ocrelizumab versus placebo in primary progressive multiple sclerosis. *N Engl J Med* 2017;376:209–220.
- Kapoor R, Ho PR, Campbell N, et al. Effect of natalizumab on disease progression in secondary progressive multiple sclerosis (ASCEND): a phase 3, randomised, double-blind, placebo-controlled trial with an open-label extension. *Lancet Neurol* 2018a;17:405–415.
- Frischer JM, Weigand SD, Guo Y, et al. Clinical and pathological insights into the dynamic nature of the white matter multiple sclerosis plaque. *Ann Neurol* 2015;78:710–721.
- Coles AJ, Cox A, Le Page E, et al. The window of therapeutic opportunity in multiple sclerosis: evidence from monoclonal antibody therapy. *J Neurol* 2006;253:98–108.
- Casanova B, Jarque I, Gascón F, et al. Autologous hematopoietic stem cell transplantation in relapsing-remitting multiple sclerosis: comparison with secondary progressive multiple sclerosis. *Neurol Sci* 2017;38:1213–1221.
- van der Star BJ, Vogel DY, Kipp M, et al. In vitro and in vivo models of multiple sclerosis. *CNS Neurol Disord Drug Targets* 2012;11:570–588.
- Baker D, Amor S. Mouse models of multiple sclerosis: lost in translation? *Curr Pharm Des* 2015;21:2440–2452.
- Al-Izki S, Pryce G, O'Neill JK, et al. Practical guide to the induction of relapsing progressive experimental autoimmune encephalomyelitis in the Biozzi ABH mouse. *Mult Scler Relat Disord* 2012;1:29–38.
- Pryce G, O'Neill JK, Croxford JL, et al. Autoimmune tolerance eliminates relapses but fails to halt progression in a model of multiple sclerosis. *J Neuroimmunol* 2005;165:41–52.
- Al-Izki S, Pryce G, Jackson SJ, et al. Immunosuppression with FTY720 is insufficient to prevent secondary progressive neurodegeneration in experimental autoimmune encephalomyelitis. *Mult Scler* 2011;17:939–948.
- Hampton DW, Anderson J, Pryce G, et al. An experimental model of secondary progressive multiple sclerosis that shows regional variation in gliosis, remyelination, axonal and neuronal loss. *J Neuroimmunol* 2008;201–202:200–211.
- Hampton DW, Serio A, Pryce G, et al. Neurodegeneration progresses despite complete elimination of clinical relapses in a mouse model of multiple sclerosis. *Acta Neuropathol Commun* 2013;1:84.
- Makino S, Kurimoto K, Muraoka Y, et al. Breeding of a non-obese diabetic strain of mice. *Exp Anim* 1980;29:1–13.
- O'Reilly LA, Healey D, Simpson E, et al. Studies on the thymus of non-obese diabetic (NOD) mice: effect of transgene expression. *Immunology* 1994;82:275–286.
- Dang PT, Bui Q, D'Souza CS, Orian JM. Modelling MS: Chronic-relapsing EAE in NOD/Lt mouse strain. *Curr Top Behav Neurosci* 2015;26:143–147.
- Basso AS, Frenkel D, Quintana FJ, et al. Reversal of axonal loss and disability in a mouse model of progressive multiple sclerosis. *J Clin Invest* 2008;118:1532–1543.
- Farez MF, Quintana FJ, Gandhi R, et al. Toll-like receptor 2 and poly(ADP-ribose) polymerase 1 promote central nervous system neuroinflammation in progressive EAE. *Nat Immunol* 2009;10:958–964.
- Levy-Barazany H, Barazany D, Puckett L, et al. Brain MRI of nasal MOG therapeutic effect in relapsing-progressive EAE. *Exp Neurol* 2014;255:63–67.
- Mayo L, Cunha AP, Madi A, et al. IL-10-dependent Tr1 cells attenuate astrocyte activation and ameliorate chronic central nervous system inflammation. *Brain* 2016;139:1939–1957.

28. Mayo L, Trauger SA, Blain M, et al. Regulation of astrocyte activation by glycolipids drives chronic CNS inflammation. *Nat Med* 2014;20:1147–1156.
29. Jayaraman A, Sharma M, Prabhakar B, et al. Amelioration of progressive autoimmune encephalomyelitis by epigenetic regulation involves selective repression of mature neutrophils during the preclinical phase. *Exp Neurol* 2018;304:14–20.
30. Tanabe S, Fujita Y, Ikuma K, Yamashita T. Inhibiting repulsive guidance molecule-a suppresses secondary progression in mouse models of multiple sclerosis. *Cell Death Dis* 2018;9:1061.
31. Yu G, Zheng S, Zhang H. Inhibition of myeloperoxidase by N-acetyl lysyltyrosylcysteine amide reduces experimental autoimmune encephalomyelitis-induced injury and promotes oligodendrocyte regeneration and neurogenesis in a murine model of progressive multiple sclerosis. *NeuroReport* 2018;29:208–213.
32. Kocovski P, Dang PT, D'Souza C, et al. Differential anxiety-like responses in NOD/ShiLtJ and C57BL/6J mice following experimental autoimmune encephalomyelitis induction and oral gavage. *Lab Anim* 2018;52:470–478.
33. Amor S, Baker D, Groome N, Turk JL. Identification of a major encephalitogenic epitope of proteolipid protein (residues 56-70) for the induction of experimental allergic encephalomyelitis in Biozzi AB/H and nonobese diabetic mice. *J Immunol*. 1993;150:5666–5672.
34. Amor S, Groome N, Linington C, et al. Identification of epitopes of myelin oligodendrocyte glycoprotein for the induction of experimental allergic encephalomyelitis in SJL and Biozzi AB/H mice. *J Immunol*. 1994;153:4349–4356.
35. Amor S, O'Neill JK, Morris MM, et al. Encephalitogenic epitopes of myelin basic protein, proteolipid protein, myelin oligodendrocyte glycoprotein for experimental allergic encephalomyelitis induction in Biozzi ABH (H-2Ag7) mice share an amino acid motif. *J Immunol*. 1996;56:3000–3008.
36. Baker D, O'Neill JK, Gscmeissner SE, et al. Induction of chronic relapsing experimental allergic encephalomyelitis in Biozzi mice. *J Neuroimmunol* 1990;28:261–270.
37. Amor S, Smith PA, Hart B', Baker D. Biozzi mice: of mice and human neurological diseases. *J Neuroimmunol* 2005; 165:1–10.
38. Baker D. Genetics of experimental allergic encephalomyelitis in "Experimental Models of Multiple Sclerosis", E. Lavi and C Constantinescu (eds) Springer Science + Business Media, New York. 2005; Pg. 181-200. ISBN 0-387-25517-6.
39. Hankey DJ, Nickerson JM, Donoso LA, et al. Experimental autoimmune uveoretinitis in mice (Biozzi ABH and NOD) expressing the autoimmune-associated H-2A(g7) molecule: identification of a uveitogenic epitope. *J Neuroimmunol* 2001;118:212–222.
40. Takács K, Douek DC, Altmann DM Exacerbated autoimmunity associated with a T helper-1 cytokine profile shift in H-2E-transgenic mice. *Eur J Immunol* 1995;25:3134–3141.
41. Bernard CC, Johns TG, Slavin A, et al. Myelin oligodendrocyte glycoprotein: a novel candidate autoantigen in multiple sclerosis. *J Mol Med* 1997;75:77–88.
42. Delarasse C, Smith P, Baker D, Amor S. Novel pathogenic epitopes of myelin oligodendrocyte glycoprotein induce experimental autoimmune encephalomyelitis in C57BL/6 mice. *Immunology* 2013;140:456–464.
43. Black JA, Liu S, Hains BC, et al. Long-term protection of central axons with phenytoin in monophasic and chronic-relapsing EAE. *Brain* 2006;129:3196–3208.
44. Pryce G, Cabranes A, Fernández-Ruiz J, et al. Control of experimental spasticity by targeting the degradation of endocannabinoids using selective fatty acid amide hydrolase inhibitors. *Mult Scler*. 2013;19:1896–1904.
45. Lassmann H, Bradl M. Multiple sclerosis: experimental models and reality. *Acta Neuropathol* 2017;133:223–244.
46. Jackson SJ, Lee J, Nikodemova M, et al. Quantification of myelin and axon pathology during relapsing progressive experimental autoimmune encephalomyelitis in the Biozzi ABH mouse. *J Neuropathol Exp Neuro* 2009;68:616–625.
47. Encinas JA, Wicker LS, Peterson LB, et al. QTL influencing autoimmune diabetes and encephalomyelitis map to a 0.15-cM region containing Il2. *Nat Genet* 1999;21:158–160.
48. Levy H, Assaf Y, Frenkel D. Characterization of brain lesions in a mouse model of progressive multiple sclerosis. *Exp Neurol* 2010;226:148–158.
49. Komiya T, Sato K, Shiyo H, et al. Efficacy and immunomodulatory actions of ONO-4641, a novel selective agonist for sphingosine 1-phosphate receptors 1 and 5, in preclinical models of multiple sclerosis. *Curr Top Behav Neurosci*. 2015;26:143–177.
50. Huntington ND, Tomioka R, Clavarino C, et al. A BAFF antagonist suppresses experimental autoimmune encephalomyelitis by targeting cell-mediated and humoral immune responses. *Int Immunol* 2006;18:1473–1485.
51. Anderson AC, Chandwaskar R, Lee DH, et al. A transgenic model of central nervous system autoimmunity mediated by CD4 + and CD8 + T and B cells. *J Immunol*. 2012;188:2084–2092.
52. Onuki M, Ayers MM, Bernard CCA, Orian JM. Axonal degeneration is an early pathological feature in autoimmune-mediated demyelination in mice. *Microsc Res Tech* 2001;52:731–739.
53. Mahad DH, Trapp BD, Lassmann H. Pathological mechanism in progressive multiple sclerosis. *Lancet Neurol* 2015;14:183–193.

54. Al-Izki S, Pryce G, Hankey DJ, et al. Lesional-targeting of neuroprotection to the inflammatory penumbra in experimental multiple sclerosis. *Brain* 2014;137:92–108.
55. van Oosten BW, Lai M, Hodgkinson S, et al. Treatment of multiple sclerosis with the monoclonal anti-CD4 antibody cM-T412: results of a randomized, double-blind, placebo-controlled, MR-monitored phase II trial. *Neurology* 1997;49:351–357.
56. Freedman MS, Bar-Or A, Oger J, et al. A phase III study evaluating the efficacy and safety of MBP8298 in secondary progressive MS. *Neurology* 2011;77:1551–1560.
57. Gunnarsson M, Malmeström C, Axelsson M, et al. Axonal damage in relapsing multiple sclerosis is markedly reduced by natalizumab. *Ann Neurol* 2011;69:83–89.
58. Trapp BD, Peterson J, Ransohoff RM, et al. Axonal transection in the lesions of multiple sclerosis. *N Engl J Med* 1998;338:278–285.
59. Raftopoulos R, Hickman SJ, Toosy A, et al. Phenytoin for neuroprotection in patients with acute optic neuritis: a randomised, placebo-controlled, phase 2 trial. *Lancet Neurol*. 2016;15:259–269.
60. Croxford JL, Pryce G, Jackson SJ, et al. Cannabinoid-mediated neuroprotection, not immunosuppression, may be more relevant to multiple sclerosis. *J Neuroimmunol* 2008;193:120–129.
61. Jones MV, Nguyen TT, Deboy CA, et al. Behavioral and pathological outcomes in MOG 35-55 experimental autoimmune encephalomyelitis. *J Neuroimmunol* 2008;199:83–93.
62. Baker D, Lidster K, Sottomayor A, Amor S. Two years later: journals are not yet enforcing the ARRIVE guidelines on reporting standards for pre-clinical animal studies. *PLoS Biol* 2014;12:e1001756.
63. Peferoen LA, Breur M, van de Berg S, et al. Ageing and recurrent episodes of neuroinflammation promote progressive experimental autoimmune encephalomyelitis in Biozzi ABH mice. *Immunology* 2016;149:146–156.
64. Vega-Riquer JM, Mendez-Victoriano G, Morales-Luckie RA, Gonzalez-Perez O. Five decades of cuprizone, an updated model to replicate demyelinating diseases. *Curr Neuropharmacol* 2019;17:129–141.
65. Pryce G, Riddall DR, Selwood DL, et al. Neuroprotection in experimental autoimmune encephalomyelitis and progressive multiple sclerosis by cannabis-based cannabinoids. *J Neuroimmune Pharmacol* 2015;10:281–292.
66. Xiu Y, Cheng GH, Peng C, et al. Ultrastructural abnormalities and loss of myelinated fibers in the corpus callosum of demyelinated mice induced by cuprizone. *J Neurosci Res* 2017;95:1677–1689.
67. Vesterinen HM, Sena ES, French-Constant C, et al. Improving the translational hit of experimental treatments in multiple sclerosis. *Mult Scler*. 2010;16:1044–1055.
68. Baker D, Amor S. Publication guidelines for refereeing and reporting on animal use in experimental autoimmune encephalomyelitis. *J Neuroimmunol* 2012;242:78–83.
69. Goldacre B. *Bad Pharma: How medicine is broken and how we can fix it*. London: Harper Collins, 2012. ISBN 9780007498086
70. Coquet JM, Middendorp S, van der Horst G, et al. The CD27 and CD70 costimulatory pathway inhibits effector function of T helper 17 cells and attenuates associated autoimmunity. *Immunity* 2013;38:53–65.
71. Demir S, Pitarokoili K, Linker R, Gold R. Immune cell derived BDNF does not mediate neuroprotection of the murine anti-CD52 antibody in a chronic autoimmune mouse model. *J Neuroimmunol* 2018;328:78–85.
72. Nachbur U, Stafford CA, Bankovacki A, et al. A RIPK2 inhibitor delays NOD signalling events yet prevents inflammatory cytokine production. *Nat Commun* 2015;6:6442.
73. Baker D, Amor S. Experimental autoimmune encephalomyelitis is a good model of multiple sclerosis if used wisely. *Mult Scler Relat Disord*. 2014;3:555–564.

Supporting Information

Additional supporting information may be found online in the Supporting Information section at the end of the article.

Data S1. Individual daily disease scores of animals