

Published in final edited form as:

*Sci Total Environ.* 2019 July 18; 692: 441–449. doi:10.1016/j.scitotenv.2019.07.266.

## Nutrient-induced shifts of dominant species reduce ecosystem stability via increases in species synchrony and population variability

Ming-Hua Song<sup>#a,e</sup>, Ning Zong<sup>#b</sup>, Jing Jiang<sup>c</sup>, Pei-Li Shi<sup>b,\*</sup>, Xian-Zhou Zhang<sup>b</sup>, Jun-Qin Gao<sup>d</sup>, Hua-Kun Zhou<sup>e</sup>, Yi-Kang Li<sup>e</sup>, Michel Loreau<sup>f</sup>

Elena Paoletti

<sup>a</sup>Key Laboratory of Ecosystem Network Observation and Modeling, Institute of Geographic Sciences and Natural Resources Research, Chinese Academy of Sciences, A11, Datun Road, Chaoyang District, Beijing 100101, China

<sup>b</sup>Lhasa National Ecological Research Station, Key Laboratory of Ecosystem Network Observation and Modelling, Institute of Geographic Sciences and Natural Resources Research, Chinese Academy of Sciences, A11, Datun Road, Chaoyang District, Beijing 100101, China

<sup>c</sup>Nanjing Agricultural Institute of Jiangsu Hilly Region, Nanjing, Jiangsu 210046, China

<sup>d</sup>School of Nature Conservation, Beijing Forestry University, Qinghua East Road 35, Haidian District, Beijing 100083, China

<sup>e</sup>Key laboratory of restoration ecology of cold area in Qinghai Province, Northwest Institute of Plateau Biology, Chinese Academy of Sciences, 59 Xiguan Dajie, Xining 810008, China

<sup>f</sup>Centre for Biodiversity Theory and Modelling, Theoretical and Experimental Ecology Station, CNRS and Paul Sabatier University, Moulis 09200, France

# These authors contributed equally to this work.

### Abstract

The mechanisms underlying nutrient-induced diversity–stability relationships have been examined extensively. However, the effects of nutrient-induced shifts of dominant species on ecosystem stability have rarely been evaluated. We compiled a dataset from a long-term nitrogen (N) and phosphorus (P) enrichment experiment conducted in an alpine grassland on the Tibetan Plateau to test the effects of nutrient-induced shifts of dominant species on stability. Our results show that N enrichment increased synchrony among the dominant species, which contributed to a significant increase in synchrony of the whole community. Meanwhile, N-induced shifts in dominant species composition significantly increased population variability. Increases in species synchrony and population variability resulted in a decline in ecosystem stability. Our study has important implications for progress in understanding the role of plant functional compensation in the stability of ecosystem functions, which is critical for better understanding the mechanisms driving both community assembly and ecosystem functions.

\*Corresponding author. shipl@igsnr.ac.cn (P.-L. Shi).

The authors declare no competing financial interests.

## Keywords

Nutrient enrichment; Selection effect; Species richness; Alpine grassland; Tibetan Plateau

---

Dominant species in natural communities contribute a great deal to community biomass and other properties (Polley et al., 2007). Ecosystem stability largely depends on whether biomass varies more or less in dominant species than in other species. When dominance is high, aggregate species synchrony can be mostly determined by dominant species in some cases (Lepš, 2004; Polley et al., 2007). There are at least two different ways in which dominance could influence ecosystem stability. Firstly, dominant species can have a disproportionate effect on population and ecosystem stability through a selection effect, if they are either more or less stable than other species (Loreau and de Mazancourt, 2013). Secondly, species asynchrony can be more or less pronounced among dominant species. The latter contributes to the classical mechanism of asynchrony, which is a form of temporal complementarity among species, even though the mechanism is mostly driven by only some species in the community (Loreau and de Mazancourt, 2013). However, little is known about the effect of nutrient enrichment-induced shifts of dominant species on ecosystem stability. It is critical to differentiate effects of nutrient-induced shifts of dominant species from the general effects of nutrient-induced changes of species richness on stability.

In this study, our objectives were to test (1) whether only dominant species or all species within communities drive ecosystem stability, and (2) whether these effects are driven by selection effects and/or by changes in synchrony. We hypothesized that nutrient-induced shifts of dominant species could contribute to variation in ecosystem stability via changes in species synchrony, i.e., temporal complementarity among species, and functional complementarity. We also hypothesized that nutrient-induced shifts of dominant species could contribute to ecosystem stability via selection effects, i.e., whether communities contain more or less stable species, as indicated by high or low population stability. To integrate the knowledge on mechanisms of ecosystem stability and test our hypotheses, we developed a causal diagram (Fig. 1) and compiled a dataset from long-term nitrogen (N) and phosphorous (P) enrichment experiment conducted in an alpine grassland on the Tibetan Plateau.

## 2 Materials and methods

We compiled a dataset from a long-term nutrient enrichment experiment conducted in an alpine grassland ecosystem on the Tibetan Plateau. The site is located in Damxung County (30°51'N, 91°05'E), in the mid-south of the Tibetan Plateau, in the Tibet autonomous region.

### 2.1 Experimental site

A nutrient enrichment experiment was conducted in an alpine grassland in Damxung County (30°51'N, 91°05'E), located in the midsouth of the Tibetan Plateau. The average altitude of this area is 4320 m above sea level. The climate is continental and semiarid, with dry and frigid winters and springs. The mean annual temperature is 1.3 °C, with the lowest mean

monthly temperature of  $-10.4\text{ }^{\circ}\text{C}$  corresponding to January and the highest mean monthly temperature of  $10.7\text{ }^{\circ}\text{C}$  corresponding to July (see Supplementary Fig. S1). The average annual precipitation is 380 mm, and approximately 85% of this falls during the summer monsoon season, which runs from June through August. The vegetation was originally dominated by the perennial sedge *Kobresia pygmaea* C.B. Clarke, accompanied by the sedge species *Carex montis-everestii* Kükenth., the grass species *Stipa capillacea* Keng, and the forb species *Anaphalis xylorhiza* Sch.-BiP. and *Potentilla bifurca* L. However, the less palatable perennial herb *Anaphalis xylorhiza* Sch.-Bip. ex Hook. f., which belongs to a composite family, usually occupies a position of high dominance in communities that experiencing winter grazing within this semiarid grassland. Palatable graminoids, such as the clonal species *S. capillacea* and *C. montis-everestii*, are subdominant species because of the suppression of grazing herbivores, while the clonal species *K. pygmaea* acts as a keystone species and maintains relatively stable abundance in the alpine meadow. In the summer, the average height of the canopy is  $<10\text{ cm}$ , and the degree of vegetation cover ranges from 30 to 60%, depending on the annual precipitation. The soil is classified as alpine meadow soil and characterized as sandy loam. Plant roots are mainly distributed within soil layer of 10–15 cm where soil organic matter is relative high ranging from 0.9 to 2.79%. Total nitrogen concentration is ranging from 0.05 to 0.19%, and total phosphorus concentration is ranging from 0.03 to 0.07%.

## 2.2 Experimental design

In 2008, an area of  $40\text{ m} \times 40\text{ m}$ , with uniform vegetation cover, in an area where the vegetation had never been fertilized, was selected for a nutrient enrichment experiment. The experiment was fractional factorial design with N addition rates of 5 and  $10\text{ g N m}^{-2}\text{ yr}^{-1}$  and phosphorus (P) addition rates of  $5\text{ g P m}^{-2}\text{ yr}^{-1}$ , and the combination of N at the two levels with phosphorus at rate of  $5\text{ g P m}^{-2}\text{ yr}^{-1}$ , respectively. Treatment without addition of N and P was treated as control. The six treatments were coded as LN (low N:  $5\text{ g N m}^{-2}\text{ yr}^{-1}$ ), HN (high N:  $10\text{ g N m}^{-2}\text{ yr}^{-1}$ ), P ( $5\text{ g P m}^{-2}\text{ yr}^{-1}$ ), LNP ( $(5\text{ g N} + 5\text{ g P})\text{ m}^{-2}\text{ yr}^{-1}$ ), HNP ( $(10\text{ g N} + 5\text{ g P})\text{ m}^{-2}\text{ yr}^{-1}$ ), and C (control: without addition of N and P). We chose the N rates based on the knowledge that the N critical load for plant growth is around  $5\text{ g m}^{-2}\text{ yr}^{-1}$  in the alpine grassland, and N rate of around  $10\text{ g m}^{-2}\text{ yr}^{-1}$  is the relative high rate usually used for fertilization by grassland managers (Zong et al., 2016; Zhang et al., 2019). P rate of  $5\text{ g m}^{-2}\text{ yr}^{-1}$  was referred to the N addition rates and also considered that plant growth in the grassland is not limited by soil available P. A completely random block design was developed for the experiment. Six blocks were established, and five  $5\text{ m} \times 5\text{ m}$  plots were set up in each block for each of the six treatments. Therefore, there were 30 plots in total. The plots were separated from each other by 2-m aisles that served as buffer zone.  $\text{CO}(\text{NH}_2)_2$  and  $(\text{NH}_4)_2\text{HPO}_4$  were applied in the middle of June in each year.

## 2.3 Sampling and measurements

A  $1\text{ m} \times 1\text{ m}$  quadrat was established at the center of each plot. The occurrence of each vascular species in each quadrat was recorded in the middle of August each year from 2010 to 2018, and species richness was then calculated. The coverage and aboveground biomass of each species was measured in August of each year from 2010 to 2018. For the P treatment plots, measurements were carried out from 2013 to 2018. For the cover measurements, a  $1\text{ m}$

× 1 m frame with 100 grid cells (10 cm × 10 cm) was placed above the canopy in each quadrat, and the cover of each species was visually estimated in each grid cell. For biomass measurements, we clipped aboveground shoots within a 0.25 m × 0.25 m quadrat outside the central 1 m × 1 m quadrat but within the plot, in the middle of August every year, when biomass peaked. The quadrats for clipping were shifted each year within the plot to avoid harvesting the same area in successive years. Shoots were clipped at ground level and sorted by species. All shoots were oven-dried at 60 °C for 48 h and then weighed for biomass. All the above measurements were performed in randomly selected three out of the five replicate plots in each treatment.

## 2.4 Variable calculations

We used the data of species richness and aboveground biomass collected from each plot in the Damxung alpine grassland from 2013 to 2018 for P treatment and from 2010 to 2018 for other five treatments. Ecosystem stability was measured by calculating the temporal mean in each plot over multiple years divided by the temporal standard deviation (Lehman and Tilman, 2000; Tilman et al., 2002). Population stability was calculated as the sum of the stability of each species weighted by the species biomass in each plot (Haegeman et al., 2016; Thibaut and Connolly, 2013). Species relative abundance was calculated as the aboveground biomass of species divided by the aboveground biomass of the community. We calculated the mean species richness in each plot over time. Values of Simpson's dominance indices (Smith and Wilson, 1996) were calculated based on the species relative biomass in each plot. The mean dominance was calculated as the average over the years spanned by the data.

We calculated the community-wide synchrony of species as follows (Loreau and de Mazancourt, 2008; Loreau, 2010):

$$\varphi_c = \frac{\sigma_{cT}^2}{\left(\sum_{i=1}^S \sigma_{ci}\right)^2}$$

where  $\varphi_c$  is the community-wide synchrony of species based on species biomass,  $\sigma_{cT}^2$  is the variance of aboveground biomass at the community level (i.e., the sum of all species in a community),  $\sigma_{ci}$  is the standard deviation of the aboveground biomass of species  $i$  in the community, and  $S$  is the species number (richness) in the community (Yang et al., 2012). The value of the synchrony is equal to one if species fluctuate synchronously, which indicates that there is no significant compensatory effect, and the value is less than one if there is a significant compensatory effect (Hautier et al., 2014; Loreau and de Mazancourt, 2008). We treated the species those their relative aboveground biomass were higher than 30% within the sampling plots in the six blocks at the initial of nutrient addition treatment as dominant species. In addition, the species those their aboveground biomass showed increasing trends and their relative aboveground biomass were higher than 30% in the most of years from 2010 to 2018 were also treated as dominant species. The synchrony of dominant and non-dominant species was calculated.

## 2.5 Statistical analysis

One-way analyses of variance (ANOVAs), followed by Tukey tests, were used to compare the differences in mean richness, mean dominance, species synchrony, and community stability among the nutrient treatments. We also used one-way ANOVAs to compare the differences in synchrony among dominant species, non-dominant species, and the community as a whole. One-way analyses of variance (ANOVAs), followed by Tukey tests, were used to examine effects of nutrient addition on relative abundance and their biomass stability of common species within the communities. We calculated the temporal mean and temporal variance of each species' aboveground biomass within each replicate plot and conducted linear regressions to examine the relationships between  $\log(\text{variance of species biomass})$  and  $\log(\text{mean species biomass})$  for nutrient treatments. Mean–variance scaling relationships were also analyzed among the dominant and non-dominant species. We conducted analyses of covariance (ANCOVAs), and used nutrient treatments,  $\log(\text{mean})$ , and treatment by  $\log(\text{mean})$  to predict  $\log(\text{variance})$ . Differences in slopes was judged by the significant interactions between nutrient treatments and  $\log(\text{mean})$  to suggest that N enrichment affects the mean–variance scaling relationship (Grman et al., 2010). To differentiate between the effects of nutrient enrichment and those of nutrient-induced changes in species richness on ecosystem stability, we used the generalized linear model (GLM) to test the main effects of nutrient enrichment and species richness and their interactions. In this analysis, nutrient treatment was factor, and richness was covariate variable. We detected significant effects of nutrient enrichment ( $F_{5,18} = 8.67$ ,  $P = 0.010$ ) and interaction between nutrient enrichment and species richness ( $F_{5,18} = 8.46$ ,  $P = 0.011$ ) on stability. The effect of species richness on stability was not significant ( $F_{1,18} = 1.71$ ,  $P = 0.239$ ). We conducted linear regressions to examine the relationships of stability to mean richness, mean dominance, and species synchrony. Before all the above analyses, assumption of normal distribution and homogeneity of variance were tested. Richness and aboveground biomass were log transformed. In the study, we disregarded the block effect during data analyses due to small sample size. In addition, we employed completely random block design by considering the homogeneity of vegetation in the alpine grassland. Structural equation models (SEMs) were used to integrate our results and test the contributions of species synchrony and selection effect to ecosystem stability proposed in our causal diagram (Fig. 1; Grace et al., 2012). Based on the above univariate regression analyses, nutrient enrichment could influence ecosystem stability via species synchrony and population invariability (selection effect, whether more or less stable species were selected or filtered out), as well as species richness. Nutrient-induced changes in species richness may influence ecosystem stability through effects either on species synchrony or on population invariability. We set up the structural equations to firstly consider the effects of nutrient enrichment on ecosystem stability via the paths, i.e. synchrony of dominant species contributed significantly to species synchrony of community which further influenced ecosystem stability. Then second paths of the structural equations were set up to assess nutrient enrichment-driven selection effect via the paths, i.e. the contribution of nutrient-mediated population invariability to ecosystem stability. Finally, the third paths were set up to test whether nutrient enrichment-induced changes in species richness might indirectly influence ecosystem stability via association with species synchrony and population invariability. We also tried to fit the other models by considering selection effect via paths

from in variability of dominant species to population invariability, then to ecosystem stability. But the results did not fit well (see Supplementary Fig. S4). The model fit was evaluated using the model chi-square and its associated *P* value. The SEMs were evaluated using the lavaan R package for SEM in R 3.2.5 (Rosseel, 2012; R Core Team, 2012). All of the other statistical analyses were performed using SPSS 16 (SPSS Inc. Chicago, Illinois, USA).

### 3 Results

#### 3.1 Nutrient enrichment-induced changes in aboveground biomass and temporal stability and species synchrony

Low or high N enrichment did not alter aboveground biomass over the eight years of the experiment, with fluctuating decreasing trends in aboveground biomass after the N enrichment was performed (Fig. 2a). The combination of P with low and high N increased the aboveground biomass by 158% and 135%, respectively, over the eight years of the experiment (Fig. 2a). In comparison to the control, the high N enrichment decreased the species richness by 29.3%, and the combination of P and high N decreased the species richness by 35.3% (Fig. 2b). However, neither the low-N nor the P additions alone nor the combination of P with low N significantly altered species richness (Fig. 2b). Nutrient treatment did not alter species dominance (Fig. 2c). The low- and high-N treatments increased species synchrony and decreased the stability of the aboveground biomass, as a result of the marked increase in the variance of the aboveground biomass (Fig. 2d, e).

#### 3.2 Nutrient enrichment-induced shifts of dominant species and changes of population stability

The relative aboveground biomass of *Anaphalis xylorhiza* amounted to over 54% in the control, and five other species with high frequencies contributed approximately 29% to the aboveground biomass (Fig. 3a and also see Supplementary Table S1). P addition alone did not significantly alter the relative aboveground biomass of *A. xylorhiza* or the other five species (Fig. 3d). The aboveground biomass of *A. xylorhiza* was significantly decreased by low and high N additions, and *A. xylorhiza* have been locally extinct in both the low- and high-N plots since 2017 (Fig. 3b, c). In contrast, low and high N tended to increase the aboveground biomass of the grass *Stipa capillacea* and the forb *Potentilla bifurca* (Fig. 3b, c). The combination of P with low N tended to decrease the aboveground biomass of *A. xylorhiza* over time, but the aboveground biomass of the community as a whole was compensated by the increase in the aboveground biomass of *Carex montiseverestii* (Fig. 3e). The combination of P with high N significantly decreased the aboveground biomass of *A. xylorhiza* over time but increased the aboveground biomass of *P. bifurca* and *C. montiseverestii* (Fig. 3f). Meanwhile, LN, HN, and HNP significantly decreased the stability of *A. xylorhiza*, primarily due to a decrease in the aboveground biomass of *A. xylorhiza* over time (Fig. 3g). LNP and HNP increased both the aboveground biomass over time and the variance of *C. montiseverestii* but did not change the stability in comparison with the control (Fig. 3g). Similarly, HNP increased the aboveground biomass and the variance of *P. bifurca* significantly over time, although the stability was not altered significantly in comparison to the control (Fig. 3g).

### 3.3 Nutrient enrichment-induced alterations in mean–variance scaling relationships

The log-transformed species mean biomass over time was linearly scaled with respect to the log-transformed variance of the biomass (Fig. 4). We also found a lower scaling coefficient (lower slope) in the dominant species than in the non-dominant species for the control (Fig. 4a). Low and high N enrichment increased the slope of the mean–variance scaling relationship (see Supplementary Fig. S2) to marginally significant degrees. These increases are attributed primarily to amplified increases in the slopes of the relationships among dominant species for low and high N (Fig. 4b, c). P addition alone or the combination of P with low or high N did not significantly alter the mean–variance scaling relationships across all species or among dominant or non-dominant species (Fig. 4d, e, f). In addition, the significantly lower synchrony of the community as a whole than the synchrony among dominant or non-dominant species for P, LNP, and HNP indicates that compensatory dynamics are generated between dominant and non-dominant species (Fig. 4j, k, l).

### 3.4 Contributions of the stabilizing mechanisms driven by nutrient enrichment

The stability of the aboveground biomass was found to be positively correlated with species richness but not correlated to community dominance (Fig. 5a, b). Stability was found to be negatively correlated to species synchrony (Fig. 5c). A significant positive correlation was found between population invariability and ecosystem stability (Fig. 5d). Population stability was positively correlated with both stability of dominant species and species richness (Fig. 5e, f). Structural equation modelling revealed that nutrient enrichment amplified the variance of the dominant species, which generated high synchrony among dominant species and contributed to the increase in species synchrony of community as a whole. Meanwhile, nutrient enrichment induced shifts in the dominant species, which contributed to significant increases in population variability. In addition, the nutrient-induced decrease in species richness contributed to a decrease in ecosystem stability via an increase of population variability and species synchrony. The nutrient-induced increase in both the aggregate species synchrony and population variability ultimately resulted in the decline of stability in the Damxung grassland ecosystem (Fig. 6).

## 4 Discussion

We compiled a dataset from a long-term nutrient enrichment experiment in an alpine grassland to test the hypotheses that nutrient-induced shifts of dominant species could contribute to ecosystem stability via changes of species synchrony and could contribute to ecosystem stability via selection effects. We found that nutrient-induced decreases in species richness can contribute to ecosystem stability via regulation of population invariability and species synchrony. Thus, our results confirmed the hypotheses. Interestingly, we found that a combination of P and high N decreased the stability of dominant species *A. xylorhiza* as a result of a decrease in the aboveground biomass over time. However, the decreased stability of *A. xylorhiza* did not induce a decline in ecosystem stability. The effect of selection on a relatively stable species as the co-dominant species could facilitate the maintenance of ecosystem stability in HNP treatment.

In regions with severe climates, communities are shaped more by climate filtering than by species competition for soil nutrients or light resources (Callaway et al., 2002). Relatively strong climate filtering would allow fewer species to coexist and domination by a smaller number of species. In such communities, synchrony could be generated primarily by consistent responses among dominant species to environmental fluctuations and/or perturbations (Polley et al., 2008), while asynchronous responses among rare species could compensate for synchronous responses among dominant species. In the semiarid grassland in Damxung, low precipitation and low available nutrient concentration in the soil are two critical factors that restrict plant growth and productivity (Fu et al., 2018; Zong et al., 2016), although soil microorganisms, such as arbuscular mycorrhizal fungi, alleviate the extent of nutrient limitation to plant growth, especially for dominant species (Wei et al., 2013; Zheng et al., 2014). Coexisting species within 1 m<sup>2</sup> belong to approximately four different functional groups, such as grasses, sedges, legumes, and forbs. Species are characterized by various leaf and root traits and exhibit niche partitioning and resource compensation (Song et al., 2015; Yin et al., 2017). As a dominant species in the winter grazing grassland, *A. xylorhiza* develops a large and deep root system that allows it to utilize water deep in the soil during the summer drought. The keystone sedge species *Kobresia pygmaea* and common species *Carex montis-everestii* are characterized by shallow root systems and utilize surficial soil water in the summer. The forb species *Potentilla bifurca* is characterized by a large and deep root system. In addition, mutualistic organisms, such as arbuscular mycorrhizal fungi, can facilitate some plants to obtain the nutrient, which contributed to functional differences of some plant species in preference for N and P, such as Graminoids are, in general, nitrophilous, whereas *P. bifurca* and *C. montis-everestii* and *S. capillacea* are phosphophilous in the alpine grassland (Yang et al., 2014; Zong et al., 2016; Zong and Shi, 2019). Our results provide evidence that the release of N limitation induces amplified synchrony among dominant species, which plays a key role in the species synchrony of the aggregate community (Hautier et al., 2014; Polley et al., 2008; Song and Yu, 2015; Zhang et al., 2016). In addition, N enrichment induces rare species losses, which reduces the possibility of generating compensatory dynamics among dominant and non-dominant species via asynchronous responses (Fig. 3g–l). Therefore, perturbation-induced species losses could regulate the species synchrony of aggregate communities.

The significant contributions of dominant species to stability were observed in the grassland of Damxung. Low and high N additions induced shifts in dominant species. The large population variability caused by N enrichment ultimately contributed to a significant decline in ecosystem stability, which also indicated by the marginally significant differences in the slopes of the mean-variance scaling (Fig. S2). Ecosystem stability largely depends on whether biomass varies more or less in dominant species than in other species (Grman et al., 2010; Polley et al., 2007). Several studies have found that dominant species contribute greatly to ecosystem stability (Grman et al., 2010; Lepš, 2004; Polley et al., 2007; Steiner et al., 2005). In the Damxung grassland, less variance in the dominant species *A. xylorhiza* contributed primarily to the stability of communities without nutrient perturbations or P addition alone. Low and high N additions drove dominance replacement by the grass species *Stipa capillacea* and forb species *Potentilla bifurca*. Both of these species are characterized by relatively low population stability (Fig. 3g). N enrichment significantly decreased the



population stability of the dominant species *A. xylorhiza*, primarily as a result of a decrease in aboveground biomass over time. As a consequence, shifts in the dominant species resulted in a decline in ecosystem stability. In our study, a combination of P with low N tended to decrease the dominance of *A. xylorhiza*. However, the relative smooth increase in the sedge species *C. montis-everestii* and *P. bifurca* compensated for the decrease in dominance of *A. xylorhiza* (Fig. 4g), which maintained ecosystem stability. Interestingly, a combination of P and high N induced obvious shifts in the dominant species, with *P. bifurca* and *C. montis-everestii* taking the place of *A. xylorhiza* (Fig. 4f). Selection of these new, relatively stable co-dominant species and compensatory dynamics among the dominant and non-dominant species could explain the absence of an effect of HNP on ecosystem stability. Thus, population stability appears to be more sensitive to nutrient enrichment than the stability of the community as a whole. In our study, nutrient enrichment did not affect the stability of rare species ( $F_{5, 17} = 1.18$ ,  $P = 0.373$ ; also indicated by no difference in slopes of mean-variance scaling among non-dominant species in Fig. 4); rather, variability of the dominant species was the primary contributor to variation in ecosystem stability. Interestingly, the nutrient-induced decrease in the stability of the dominant species was primarily due to a decrease in aboveground biomass over time, whereas the nutrient-induced decrease in the stability of the community as a whole mainly was due to an increase in the variation in aboveground biomass over time. These results suggest that nutrient-induced decreases in the aboveground biomass of dominant species can be compensated for by other species and that large variations in the aboveground biomass of species over time contribute to ecosystem variability.

N-induced loss of community stability is usually linked to nutrient-induced loss of plant species richness, which could lead to both a decline in population stability and species asynchrony (Hautier et al., 2015; Yang et al., 2012; Zhang et al., 2016). However, nutrient enrichment-related decline in species asynchrony and population stability are not necessarily causally related to changes in species richness (Grman et al., 2010; Xu et al., 2015). In addition, when communities are dominated by a small number of species, N-induced reductions in the stability of dominant species could also translate into decreases in community stability (Xu et al., 2015). In this study, we did not detect significant differences in the synchrony and stability of rare species for different nutrient treatments. We therefore conclude that nutrient-induced rare species loss has a limited effect on population and ecosystem stability. The contribution of nutrient-induced decreases in species richness to ecosystem stability is mainly attributable to losses of the dominant or high-frequency species. Relations among species, such as competition and facilitation, could also contribute to the large variability of species populations (Song et al., 2006; Loreau and de Mazancourt, 2013). Increasing the strength of interspecific species competition could synchronize population size in the first period due to coupling strong density dependence between species (Loreau and de Mazancourt, 2013). Then ecological drift rather than competition could play a major role as species become increasing equivalent (Loreau and de Mazancourt, 2013). Species responses to climate fluctuations, competition or facilitation, and perturbations are largely determined by their traits (Loreau and de Mazancourt, 2013). Although we cannot provide more specific information on the effect of plant functional compensation on ecosystem stability on the basis of the results of this study, our results do indeed demonstrate

synergistic effects between N and P on productivity (i.e. low and high N decreased aboveground biomass of community over years, and P addition did not alter community biomass, but combination of N and P increased aboveground biomass of community over years) and synergistic responses of species (i.e. biomass of *C. montis-everestii* did not significantly respond to N or P alone, but biomass of *C. montiseverestii* was significantly increased in combination of N and P). The task of incorporating plant functional compensation into the stability of ecosystem functions is critical for better understanding of the mechanisms that drive both community assembly and ecosystem functions, and this remains an important challenge for future research.

## 5 Conclusions

The integrative approach adopted in this study demonstrates a clear conceptual understanding of how changes in dominant species and species richness can generate compensatory dynamics and changes in species synchrony and how the selection effect is important in determining ecosystem functions and stability. Moreover, our results also indicate the potential effects of plant functional compensation on ecosystem stability through the synergistic responses of plant species those are characterized as different preference to N and P. Our findings are equally applicable to and have implications for evaluating the effects of other environmental changes and quantifying the contributions of species richness, dominant species, and environmental fluctuations on ecosystem stability.

## Supplementary Material

Refer to Web version on PubMed Central for supplementary material.

## Acknowledgements

We thank the anonymous reviewers for their valuable comments. The study was supported by the National Key Research and Development Program (2016YFC0501803, 2016YFC0502001), the National Natural Science Foundation of China (41671263, 41703079, 31870406, 31600431), and the Qinghai Innovation Platform Construction Project (2017-ZJ-Y20). ML was supported by the TULIP Laboratory of Excellence (ANR-10-LABX-41), the BIOSASES Advanced Grant, and the European Research Council, under the European Union's Horizon 2020 Research and Innovation Program (Grant Agreement No. 666971).

## References

- Bobbink R, Hicks K, Galloway J, Spranger T, Alkemade R, Ashmore M, Bustamante M, Cinderby S, Davidson E, Dentener F, Emmett B, et al. Global assessment of nitrogen deposition effects on terrestrial plant diversity: a synthesis. *Ecol Appl*. 2010; 20:30–59. [PubMed: 20349829]
- Callaway RM, Brooker RW, Choler P, Kikvidze Z, Lortie CJ, Michalet R, Paolini L, Pugnaire FI, Newingham B, Aschehoug ET, Armas C, et al. Positive interactions among alpine plants increase with stress. *Nature*. 2002; 417:844–848. [PubMed: 12075350]
- Craven D, Eisenhauer N, Pearse WD, Hautier Y, Isbell F, Rosch C, Bahn M, Beierkuhnlein C, Bönisch G, Buchmann N, Byun C, et al. Multiple facets of biodiversity drive the diversity-stability relationship. *Nature Ecology & Evolution*. 2018; 2:1579–1587. [PubMed: 30150740]
- Duffy JE. Why biodiversity is important to the functioning of real-world ecosystems. *Front Ecol Environ*. 2009; 7:437–444.
- Ernest SKM, Brown JH. Homeostasis and compensation: the role of species and resources in ecosystem stability. *Ecology*. 2001; 82:2118–2132.

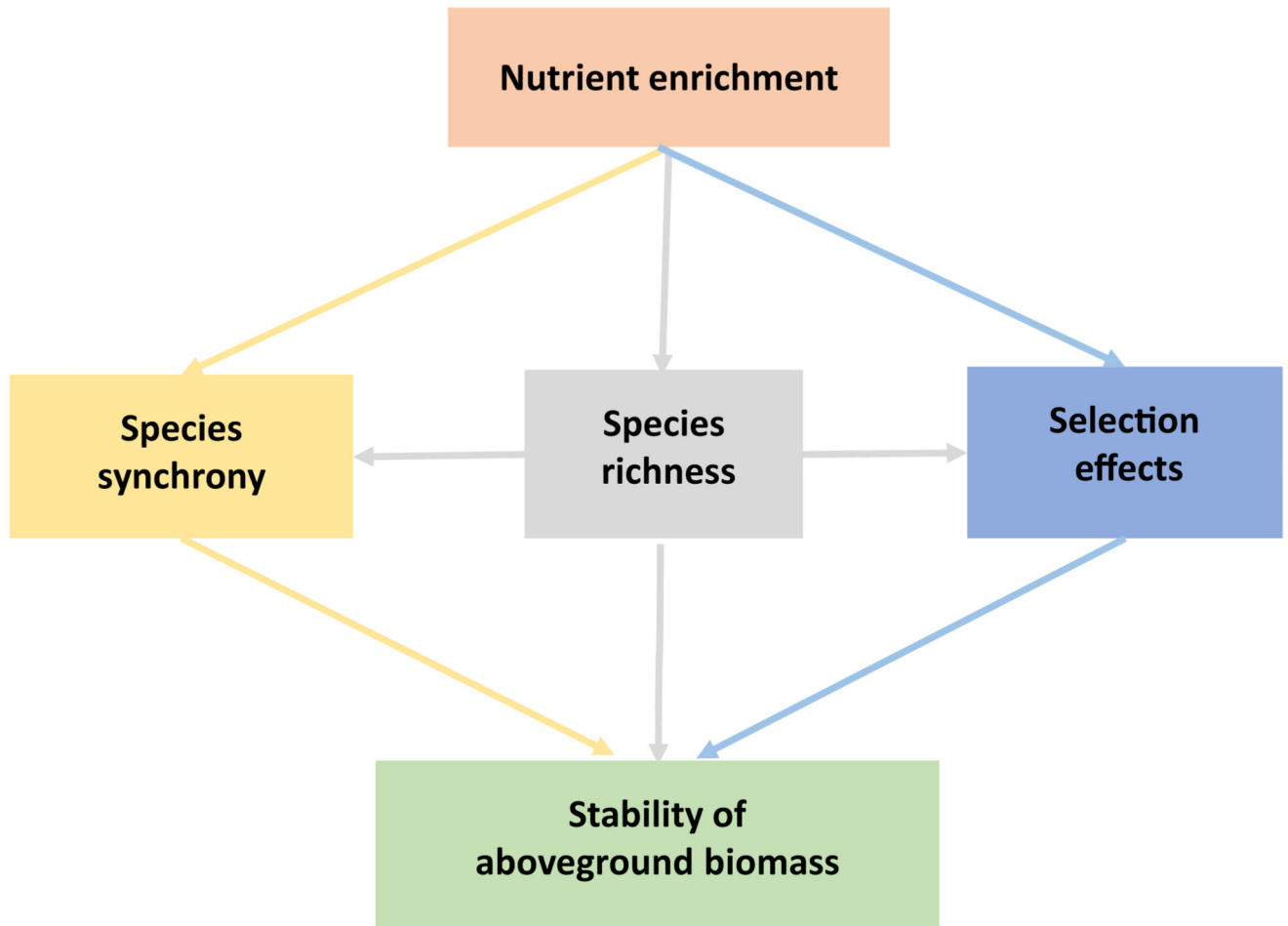
- Fu G, Shen Z, Zhang X. Increased precipitation has stronger effects on plant production of an alpine meadow than does experimental warming in the Northern Tibetan Plateau. *Agric For Meteorol.* 2018; 249:11–21.
- Grace JB, Schoolmaster DR Jr, Guntenspergen GR, Little AM, Mitchell BR, Miller KM, Schweiger EW. Guidelines for a graph-theoretic implementation of structural equation modeling. *Ecosphere.* 2012; 3(8):1–44.
- Grime JP. Plant classification for ecological purposes: is there a role for genome size? *Ann Bot.* 1998; 82:117–120.
- Grman E, Lau JA, Schoolmaster DR Jr, Gross KL. Mechanisms contributing to stability in ecosystem function depend on the environmental context. *Ecol Lett.* 2010; 13:1400–1410. [PubMed: 20849440]
- Haegeman B, Arnoldi JF, Wang S, de Mazancourt C, Montoya JM, Loreau M. Resilience, Invariability, and Ecological Stability Across Levels of Organization. *bioRxiv.* 2016
- Hautier Y, Seabloom EW, Borer ET, Adler PB, Harpole WS, Hillebrand H, Lind EM, MacDougall AS, Stevens CJ, Bakker JD, Buckley YM, et al. Eutrophication weakens stabilizing effects of diversity in natural grasslands. *Nature.* 2014; 508:521–525. [PubMed: 24531763]
- Hautier Y, Tilman D, Isbell F, Seabloom EW, Borer ET, Reich PB. Anthropogenic environmental changes affect ecosystem stability via biodiversity. *Science.* 2015; 348:336–340. [PubMed: 25883357]
- Hector A, Hautier Y, Saner P, Wacker L, Bagghi R, Joshi J, Scherer-Lorenzen M, Spehn EM, Bazeley-White E, Weilenmann M, Caldeira MC, et al. General stabilizing effects of plant diversity on grassland productivity through population asynchrony and overyielding. *Ecology.* 2010; 91:2213–2220. [PubMed: 20836442]
- Hillebrand H, Bennett DM, Cadotte MW. Consequences of dominance: a review of evenness effects on local and regional ecosystem processes. *Ecology.* 2008; 89:1510–1520. [PubMed: 18589516]
- Hooper DU, Vitousek PM. The effects of plant composition and diversity on ecosystem processes. *Science.* 1997; 277:1302–1305.
- Hooper DU, Chapin FS, Ewel JJ, Hector A, Inchausti P, Lavorel S, Lawton J, Lodge D, Loreau M, Naeem S, Schmid B, et al. Effects of biodiversity on ecosystem functioning: a consensus of current knowledge. *Ecol Monogr.* 2005; 75:3–35.
- Huston MA. Hidden treatments in ecological experiments: re-evaluating the ecosystem function of biodiversity. *Oecologia.* 1997; 110:449–460. [PubMed: 28307235]
- Lehman CL, Tilman D. Biodiversity, stability, and productivity in competitive communities. *Am Nat.* 2000; 156:534–552. [PubMed: 29587515]
- Lepš J. Variability in population and community biomass in a grassland community affected by environmental productivity and diversity. *Oikos.* 2004; 107:64–71.
- Loreau M. Biodiversity and ecosystem functioning: a mechanistic model. *Proceedings of the National Academy of Sciences USA.* 1998; 95:5632–5636.
- Loreau M. Linking biodiversity and ecosystems: towards a unifying ecological theory. *Philosophical Transactions Royal Society B-Biological Sciences.* 2010; 365:49–60.
- Loreau M, de Mazancourt C. Species synchrony and its drivers: neutral and non-neutral community dynamics in fluctuating environments. *Am Nat.* 2008; 172:E48–E66. [PubMed: 18598188]
- Loreau M, de Mazancourt C. Biodiversity and ecosystem stability: a synthesis of underlying mechanisms. *Ecol Lett.* 2013; 16:106–115. [PubMed: 23346947]
- Ma Z, Liu H, Mi Z, Zhang Z, Wang Y, Xu W, He J. Climate warming reduces the temporal stability of plant community biomass production. *Nat Commun.* 2018; doi: 10.1038/ncomms15378
- Payne RJ, Dise NB, Field CD, Dore AJ, Caporn SJM, Stevens CJ. Nitrogen deposition and plant biodiversity: past, present, and future. *Front Ecol Environ.* 2017; 15:431–436.
- Polley HW, Wilsey BJ, Derner JD. Dominant species constrain effects of species diversity on temporal variability in biomass production of tallgrass prairie. *Oikos.* 2007; 116:2044–2052.
- Polley HW, Frank AB, Sanabria J, Phillips RL. Inter-annual variability in carbon dioxide fluxes and flux-climate relationships on grazed and ungrazed northern mixed-grass prairie. *Glob Chang Biol.* 2008; 14:1620–1632.

- R Core Team. R: a language and environment for statistical computing. R foundation for statistical computing; Vienna, Austria: 2012. ISBN 3-900051-07-0 <http://www.R-project.org/>
- Romanuk TN, Vogt RJ, Kolasa J. Nutrient enrichment weakens the stabilizing effect of species richness. *Oikos*. 2006; 114:291–302.
- Rosseel Y. Lavaan: An R package for structural equation modeling. *J Stat Softw*. 2012; 48:1–36.
- Smith B, Wilson JB. A consumer's guide to evenness indices. *Oikos*. 1996; 76:70–82.
- Song MH, Yu FH. Reduced compensatory effects explain the nitrogen-mediated reduction in stability of an alpine meadow on the Tibetan Plateau. *New Phytol*. 2015; 207:70–77. [PubMed: 25684547]
- Song MH, Tian YQ, Xu XL, Hu QW, Ouyang H. Interactions between root and shoot competition among four plant species in an alpine meadow on the Tibetan Plateau. *Acta Oecol*. 2006; 29:214–220.
- Song MH, Zheng LL, Suding KN, Yin TF, Yu FH. Plasticity in nitrogen form uptake and preference in response to long-term nitrogen fertilization. *Plant Soil*. 2015; 394:215–224.
- Steiner CF, Long ZT, Krumins JA, Morin PJ. Temporal stability of aquatic food webs: partitioning the effects of species diversity, species composition and enrichment. *Ecol Lett*. 2005; 8:819–828.
- Stevens CJ, Dise NB, Mountford JO, Gowing DJ. Impact of nitrogen deposition on the species richness of grasslands. *Science*. 2004; 303:1876–1879. [PubMed: 15031507]
- Suding KN, Collins SL, Gough L, Clark C, Cleland EE, Gross KL, Pennings S. Functional- and abundance-based mechanisms explain diversity loss due to N fertilization. *Proceedings of the National Academy of Sciences USA*. 2005; 102:4387–4392.
- Thibaut LM, Connolly SR. Understanding diversity-stability relationships: towards a unified model of portfolio effects. *Ecol Lett*. 2013; 16:140–150.
- Tilman D. Biodiversity: population versus ecosystem stability. *Ecology*. 1996; 77:350–363.
- Tilman D, Knops J, Wedin D, Reich P. Experimental and observational studies of diversity, productivity, and stability. *The Functional Consequences of Biodiversity*. 2002; 33:42–70.
- Tilman D, Hill J, Lehman C. Carbon-negative biofuels from low-input high-diversity grassland biomass. *Science*. 2006; 314:1598–1600. [PubMed: 17158327]
- Wardle DA, Bonner KI, Barker GM. Stability of ecosystem properties in response to above-ground functional group richness and composition. *Oikos*. 2000; 89:11–23.
- Wei CZ, Yu Q, Bai E, Lü XT, Li Q, Xia JY, Kardol P, Liang WJ, Wang ZW, Han XG. Nitrogen deposition weakens plant-microbe interactions in grassland ecosystems. *Glob Chang Biol*. 2013; 19:3688–3697. [PubMed: 23925948]
- Xia J, Wan S. Global response patterns of terrestrial plant species to nitrogen addition. *New Phytol*. 2008; 179:428–439. [PubMed: 19086179]
- Xu ZW, Ren HY, Li MH, van Ruijven J, Han XG, Wan SQ, Jiang L. Environmental changes drive the temporal stability of semi-arid natural grasslands through altering species asynchrony. *J Ecol*. 2015; 103:1308–1316.
- Yachi S, Loreau M. Biodiversity and ecosystem productivity in a fluctuating environment: the insurance hypothesis. *Proceedings of the National Academy of Sciences USA*. 1999; 96:1463–1468.
- Yang H, Jiang L, Li L, Li A, Wu M, Wan S. Diversity-dependent stability under mowing and nutrient addition: evidence from a 7-year grassland experiment. *Ecol Lett*. 2012; 15:619–626. [PubMed: 22487498]
- Yang X, Ren F, Zhou H, He J. Responses of plant community biomass to nitrogen and phosphorus additions in an alpine meadow on the Qinghai-Xizang Plateau. *Chinese Journal of Plant Ecology*. 2014; 15:159–166.
- Yin TF, Zheng LL, Cao GM, Song MH, Yu FH. Species-specific phenological responses to long-term nitrogen fertilization in an alpine meadow. *J Plant Ecol*. 2017; 10:301–309.
- Zhang Y, Loreau M, Lu X, He N, Zhang G, Han X. Nitrogen enrichment weakens ecosystem stability through decreased species asynchrony and population stability in a temperate grassland. *Glob Chang Biol*. 2016; 22:1445–1455. [PubMed: 26511538]

- Zhang C, Willis CG, Ma Z, Ma M, Csontos P, Baskin CC, Baskin JM, Li J, Zhou H, Zhao X, Yao B, et al. Direct and indirect effects of long-term fertilization on the stability of the persistent seed bank. *Plant Soil*. 2019; 438:239–250.
- Zheng Y, Kim YC, Tian XF, Chen L, Yang W, Gao C, Song MH, Xu XL, Guo LD. Differential responses of arbuscular mycorrhizal fungi to nitrogen addition in a near pristine Tibetan alpine meadow. *FEMS Microbiol Ecol*. 2014; 89:594–605. [PubMed: 24890754]
- Zong N, Shi P. Enhanced community production rather than structure improvement under nitrogen and phosphorus addition in severely degraded alpine meadows. *Sustainability*. 2019; 11:2023.
- Zong N, Shi PL, Song MH, Zhang XZ, Jiang J, Chai X. Nitrogen critical loads for an alpine meadow ecosystem on the Tibetan Plateau. *Environ Manag*. 2016; 57:531–542.

### Highlights

- The effects of nutrient-induced shifts of dominant species on ecosystem stability have rarely been evaluated.
- Data from a long-term experiment were compiled to test the effects of nutrient-induced shifts of dominant species on stability.
- Nutrient-induced increases in species synchrony and population variability resulted in a decline in ecosystem stability.
- Plant functional compensation is critical for driving both community assembly and ecosystem functions.



**Fig. 1.**

A causal diagram showing potential mechanisms underlying the effects of nutrient enrichment on ecosystem stability via species synchrony and selection effect. Nutrient enrichment-mediated changes in species richness may influence ecosystem stability directly or via species synchrony and selection effects indirectly.

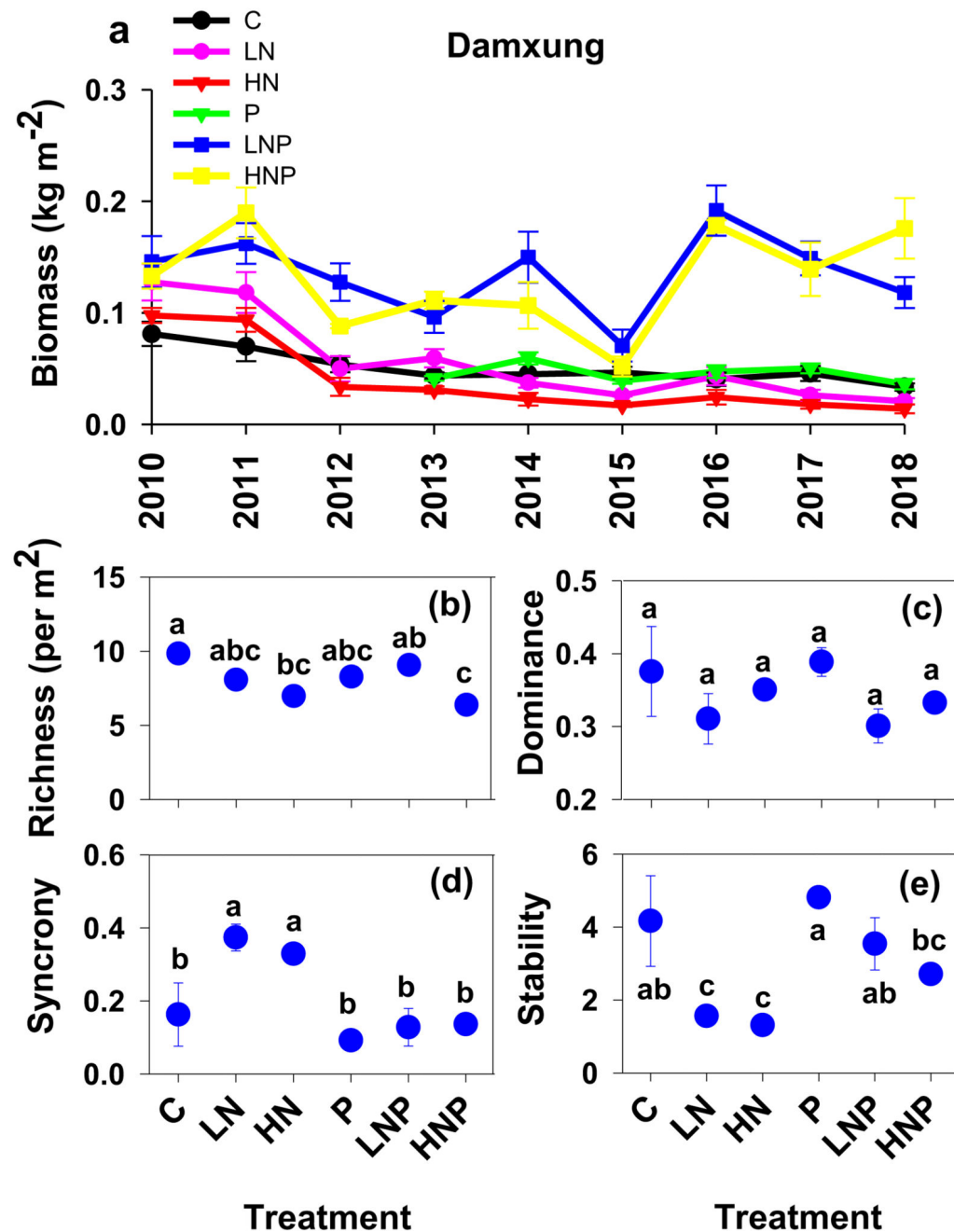
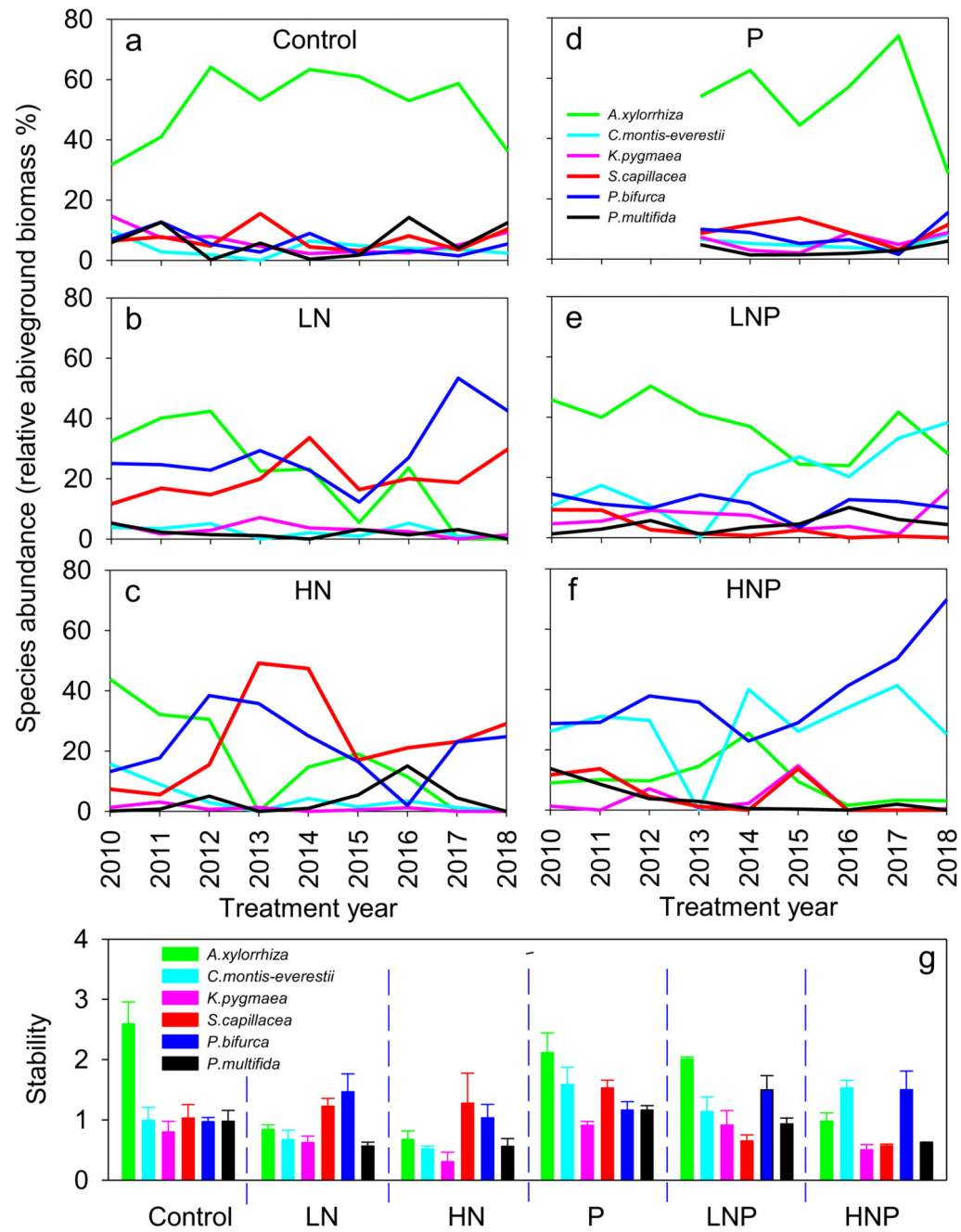


Fig. 2.

Time series variation of aboveground biomass in Damxung (a) alpine grasslands. Mean richness, mean dominance, species synchrony, and stability of aboveground biomass in Damxung (b-e) nitrogen (N) and phosphorous (P) enrichment were calculated. In Damxung nutrient enrichment experiment, N and P addition were performed in a winter grazing alpine grassland. LN, HN, P, LNP, and HNP represent low N ( $5 \text{ g N m}^{-2} \text{ yr}^{-1}$ ), high N ( $10 \text{ g N m}^{-2} \text{ yr}^{-1}$ ), constant P ( $5 \text{ g P m}^{-2} \text{ yr}^{-1}$ ), low N combined with P ( $(5 \text{ g N} + 5 \text{ g P}) \text{ m}^{-2} \text{ yr}^{-1}$ ), and high N combined with P ( $(10 \text{ g N} + 5 \text{ g P}) \text{ m}^{-2} \text{ yr}^{-1}$ ), respectively. In the control treatment



(C), neither N nor P was added. Symbols with different letters represent significant differences among the treatments at the  $P < 0.05$  level (based on Tukey's test). The nutrient treatments were carried out starting in 2008. We used data collected in P treatment ranging from 2013 to 2018, in other five treatments ranging from 2010 to 2018.



**Fig. 3.** Time series variation in species dominance in nutrient treatments indicated by their relative aboveground biomass (a–f) and stability of species aboveground biomass in nutrient treatments (g). Treatment codes are the same as in Fig. 2. For each treatment, replicate plots  $n = 3$ .

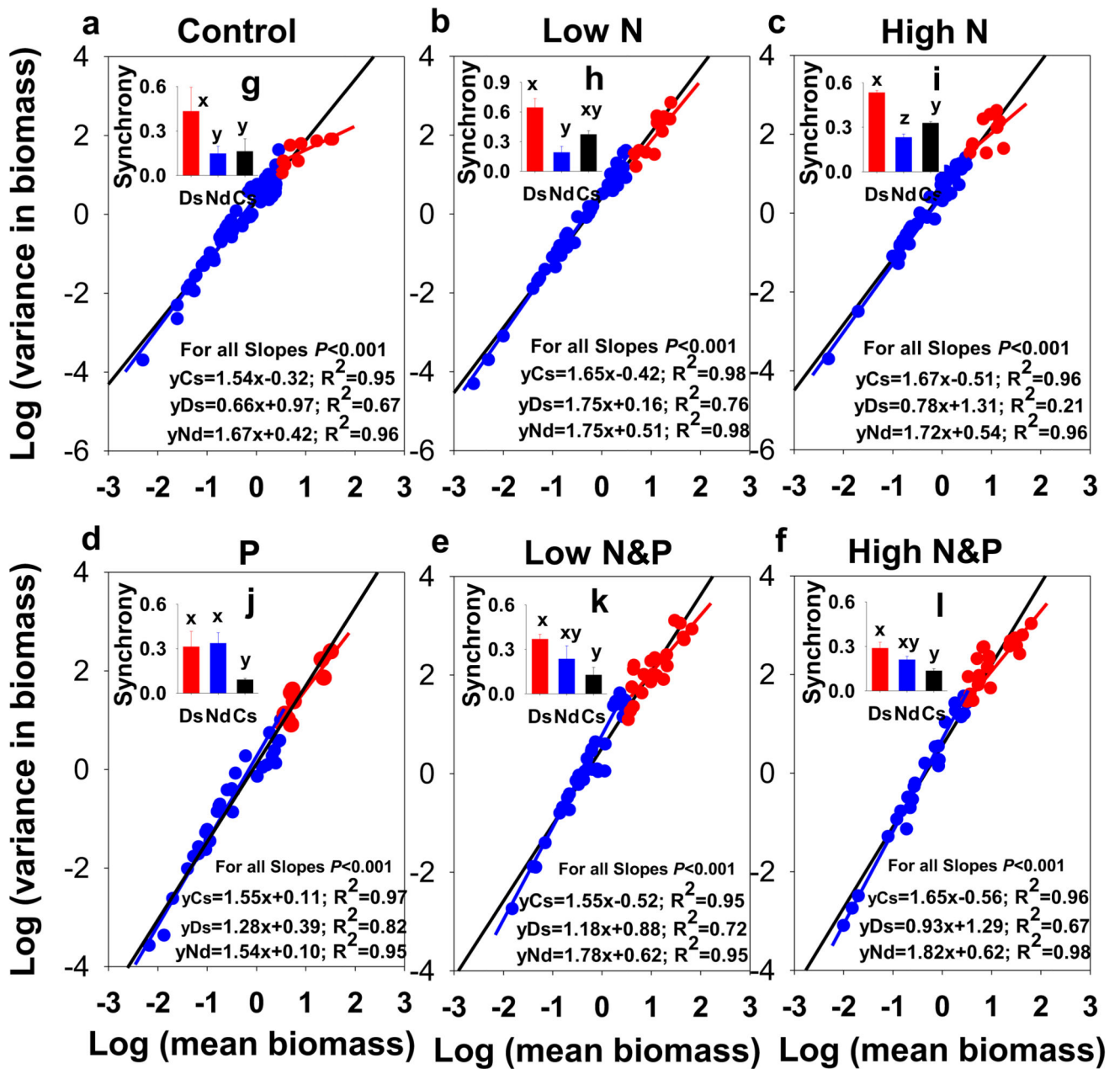
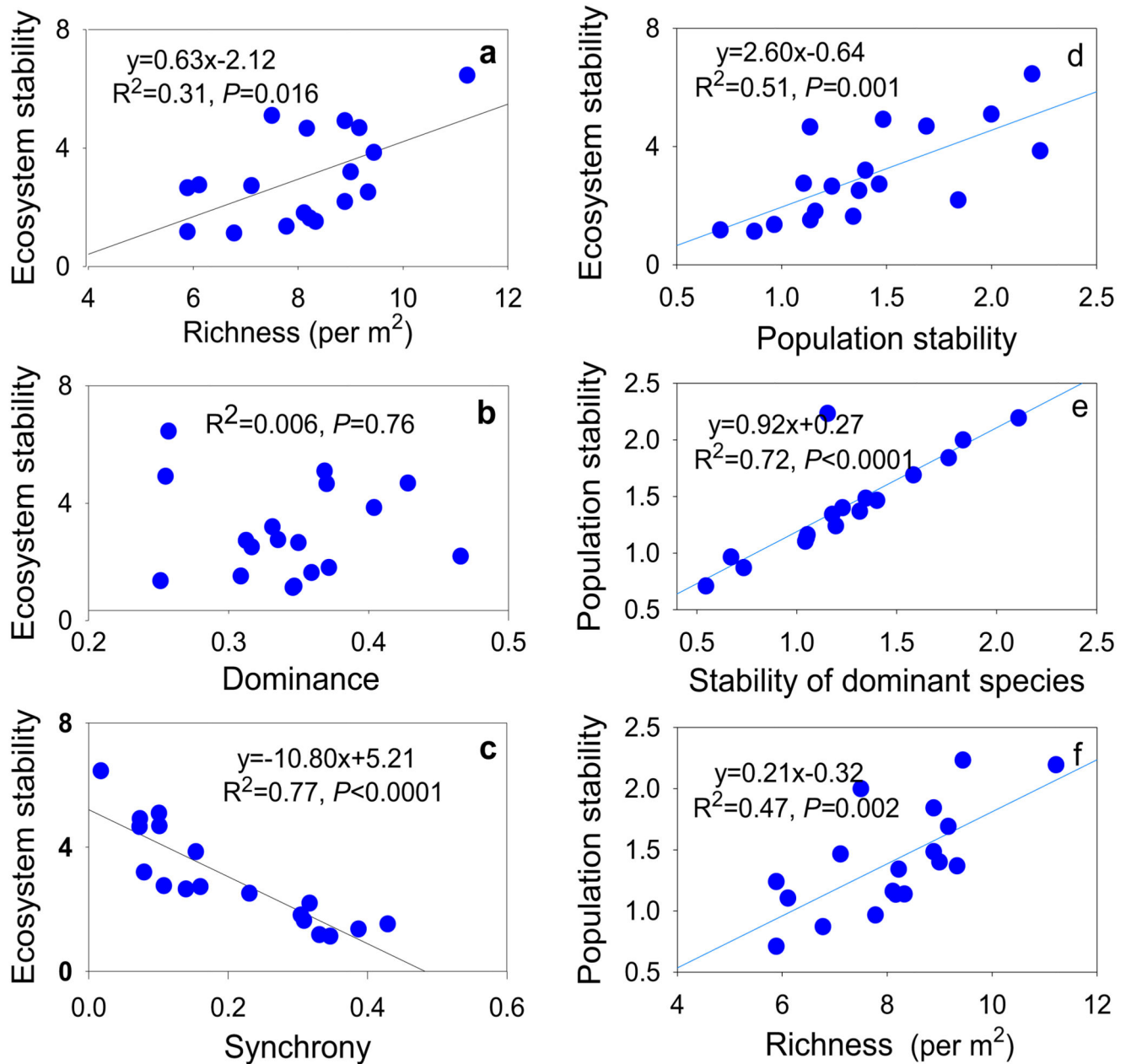


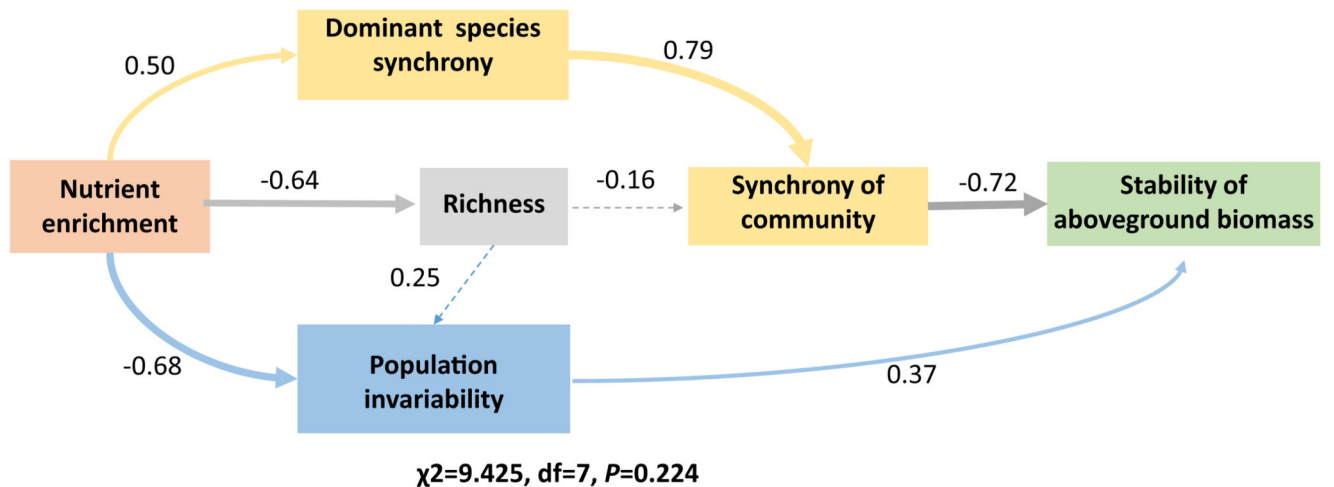
Fig. 4.

Mean–variance scaling relationships in N and P enrichment communities in Damxung alpine grassland (a–f; black lines). Mean–variance scaling relationships among dominant and non-dominant species are also shown separately (red and blue dots and lines). Bar figures (g–l) show the synchrony of dominant (Ds) and non-dominant (Nd) species and the species synchrony of the community (Cs). Bars with different letters represent significant differences among the categories at the  $P < 0.05$  level (based on Tukey's test). Treatment codes are the same as in Fig. 2. For each treatment, replicate plots  $n = 3$ . (For interpretation

of the references to colour in this figure legend, the reader is referred to the web version of this article.)

**Fig. 5.**

Bivariant regression analyses were performed to test relationships between stability and species richness, Simpson's dominance indices, and species synchrony (a–c) and relationships between population stability and ecosystem stability, species richness, and stability of dominant species (d–f) in Damxung grasslands. Species richness and dominance are values in each plot averaged across years. For each treatment, replicate plots  $n = 3$ .

**Fig. 6.**

Structural equation model analysis of the contributions of species synchrony (paths colored yellow) and selection effect (paths colored blue) driven by nutrient enrichment to stability of aboveground biomass. Synchrony of dominant species contributed significantly to species synchrony of community which further contributed to ecosystem stability. Nutrient enrichment drove selection on more or less stable population which further contributed significantly to ecosystem stability. Nutrient enrichment-induced changes in species richness indirectly influence ecosystem stability via association with species synchrony and population invariability. The thicknesses of the arrows indicate the relative contributions of the variables.  $\chi^2$ , df, and  $P$  of the model fit are given. Values alongside arrow lines are standardized regression coefficients, indicating the contribution of each variable to the response. (For interpretation of the references to colour in this figure legend, the reader is referred to the web version of this article.)