

## Gene expression profiles of antigenic proteins of third stage larvae of the zoonotic nematode *Anisakis pegreffii* in response to temperature conditions

Marialetizia Palomba<sup>1</sup>, Michela Paoletti<sup>2</sup>, Alessandra Colantoni<sup>1</sup>, Aurelia Rughetti<sup>3</sup>, Giuseppe Nascetti<sup>2</sup>, and Simonetta Mattiucci<sup>1,a,\*</sup>

<sup>1</sup> Department of Public Health and Infectious Diseases, Section of Parasitology, and “Umberto I” Academic Hospital “Sapienza – University of Rome”, P.le Aldo Moro, 5, 00185 Rome, Italy

<sup>2</sup> Department of Ecological and Biological Sciences, Tuscia University, Viale dell’Università s/n, 01100 Viterbo, Italy

<sup>3</sup> Department of Experimental Medicine, “Sapienza-University of Rome”, P.le Aldo Moro, 5, 00185 Rome, Italy

Received 19 June 2019, Accepted 12 August 2019, Published online 23 August 2019

**Abstract** – *Anisakis pegreffii*, a recognised etiological agent of human anisakiasis, is a parasite of homeothermic hosts at the adult stage and of ectothermic hosts at the third larval stage. Among distinct factors, temperature appears to be crucial in affecting parasite hatching, moulting and to modulate parasite-host interaction. In the present study, we investigated the gene transcripts of proteins having an antigenic role among excretory secretory products (ESPs) (i.e., a Kunitz-type trypsin inhibitor, *A.peg-1*; a glycoprotein, *A.peg-7*; and the myoglobin, *A.peg-13*) after 24 h, in *A. pegreffii* larvae maintained *in vitro*, under controlled temperature conditions. Temperatures were 37 °C and 20 °C, resembling respectively homeothermic and ectothermic hosts conditions, and 7 °C, the cold stress condition *post mortem* of the fish host. Primers of genes coding for these ESPs to be used in quantitative real-time PCR were newly designed, and qRT-PCR conditions developed. Expression profiles of the genes *A.peg-1* and *A.peg-13* were significantly up-regulated at 20 °C and 37 °C, with respect to the control (larvae kept at 2 °C for 24 h). Conversely, transcript profiles of *A.peg-7* did not significantly change among the chosen temperature conditions. In accordance with the observed transcript profiles, sodium dodecyl sulfate–polyacrylamide gel electrophoresis (SDS-PAGE) revealed the presence of the three target ESPs at 37 °C, while only *A.peg-13* was observed at 7 °C. The results suggest that temperature conditions do regulate the gene expression profiles of *A.peg-1* and *A.peg-13* in *A. pegreffii* larvae. However, regulation of the glycoprotein *A.peg-7* is likely to be related to other factors such as the host’s immune response.

**Key words:** *Anisakis pegreffii*, Gene expression, Immune-related genes, qRT-PCR, Temperature conditions.

**Résumé** – **Profils d’expression génique des protéines antigéniques des larves du troisième stade du nématode zoonotique *Anisakis pegreffii* en réponse aux conditions de température.** *Anisakis pegreffii*, reconnu comme agent étiologique de l’anisakiase humaine, est un parasite d’hôtes homéothermes au stade adulte et d’hôtes ectothermes au troisième stade larvaire. Parmi les facteurs distincts, la température semble être cruciale pour l’éclosion des parasites, la mue et pour moduler l’interaction parasite-hôte. Dans la présente étude, nous avons étudié les transcrits géniques de protéines ayant un rôle antigénique parmi les produits de sécrétion excréteurs (PSE) (y compris un inhibiteur de la trypsine de type Kunitz, *A.peg-1* ; une glycoprotéine, *A.peg-7* ; et la myoglobine, *A.peg-13*) après 24 h, chez des larves de *A. pegreffii* maintenues *in vitro* dans des conditions de température contrôlées. Les températures étaient de 37 °C et 20 °C, ressemblant respectivement à la condition des hôtes homéothermes et ectothermes, et 7 °C, température de stress *post mortem* de l’hôte poisson. Des amorces de gènes codant pour ces PSE, pour utilisation dans la PCR quantitative en temps réel, ont été spécialement conçues et des conditions de qRT-PCR ont été développées. Les profils d’expression des gènes *A.peg-1* et *A.peg-13* étaient nettement régulés à la hausse à 20 °C et à 37 °C par rapport au contrôle (les larves ont été conservées à 2 °C pendant 24 h). Inversement, les profils de transcription de *A.peg-7* n’ont pas changé de manière significative parmi les conditions de température choisies. Conformément aux profils de transcription observés, la SDS-PAGE a révélé la présence des trois PSE cibles à 37 °C, alors que seul *A.peg-13* a été observé à 7 °C. Les résultats obtenus suggèrent que les conditions de température régulent le profil d’expression des gènes de *A.peg-1* et *A.peg-13* chez les larves d’*A. pegreffii*. Cependant, la régulation de la glycoprotéine *A.peg-7* est probablement liée à d’autres facteurs tels que la réponse immunitaire de l’hôte.

\*Corresponding author: [simonetta.mattiucci@uniroma1.it](mailto:simonetta.mattiucci@uniroma1.it)

<sup>a</sup>Laboratory affiliated to Istituto Pasteur Italia-Fondazione Cenci Bolognetti.

## Introduction

*Anisakis pegreffii* is a parasite of homeothermic hosts (mainly cetaceans) at the adult stage, while it infects ectothermic hosts (teleost fish and squids) as third stage larvae. *Anisakis pegreffii* is the dominant species of *Anisakis* in the Mediterranean Sea; in fact, it is the most common nematode in several pelagic and demersal fish of the Mediterranean Sea [43]. In Atlantic waters, the northerly limit of the *A. pegreffii* geographical range is represented by the Iberian coast. It is also widely distributed in temperate sea waters of the Austral region, between 30° S and 60° S [2, 39, 43, 59].

*Anisakis pegreffii* has been recognised as an etiological agent of human anisakiasis. Humans can acquire an accidental infection with *A. pegreffii* mainly through consumption of raw, marinated, or undercooked fish fillets (mainly anchovies in Mediterranean countries) infected by the third stage larvae of this parasite (reviewed in [25, 43]). Several cases of anisakiasis, due to the species *A. pegreffii*, have been reported in Italy [20, 22, 25, 37, 38, 41–43], Croatia [47], Japan [60] and South Korea [33]. These geographical areas, where human anisakiasis due to *A. pegreffii* has been described, correspond to areas where a high rate of parasite infection has been reported in commercial fish species [43]. The different forms of *A. pegreffii*-related disease are: gastric anisakiasis (GA), intestinal anisakiasis (IA), ectopic anisakiasis (EA), and gastro-allergic anisakiasis (GAA) (reviewed in [25, 43]).

So far, several molecular components of the L3 larvae have been identified in *A. simplex* (s. l.) as targets of human humoral IgE-mediated antigenic response (Allergen Nomenclature Subcommittee, [www.allergen.org](http://www.allergen.org)). The antigens from *A. simplex* (s. l.) comprise both somatic antigens and excretory and secretory products (ESPs) [21, 24]. Recently, the antigens *Ani s 1 like* (24 kDa, Kunitz-type trypsin inhibitor), *Ani s 7 like* (139 kDa, glycoprotein) and *Ani s 13 like* (37 kDa, myoglobin) were recognised in human cases of anisakiasis, as well as in IgE-hypersensitised patients due to the species *A. pegreffii* [41]. These antigens do not display amino acid sequence similarity with any other allergen able to sensitize humans. Indeed, the cross-reaction with other antigens/allergens has not been documented. Such antigens are also useful for diagnosing *Anisakis* spp. infection [24, 31, 41, 49, 58]. Other putative allergens/molecules involved in the pathogenicity have recently been suggested by an RNAseq transcriptomic analysis [5, 10, 30]. Characterisation of transcriptomes by RNAseq analysis of affected tissues from rats infected with *A. pegreffii* L3 recently indicated regulated expression modulation of host immune-related genes in response to the larval infection [8, 27, 53]. However, the expression profiles of immune-related genes in these *Anisakis* larvae in homeothermic host-infected tissue were not investigated.

Temperature has generally been accepted as one of the drivers that influences the rate of biological functions and adaptation of marine parasites [65]. Larval development and time of acclimation to an altered temperature are generally thought to be to be 5–12X slower in parasite species of ectothermic hosts living near 0–10 °C, compared with those from temperate ectothermic host species [16]. Infective larval stage of nematodes generally require specific stimuli for hatching and

moulting, such as temperature, pH, and pepsin, which are known to be fundamental in the larval development to the adult stage, *in vitro* experiments [28, 48]. For many parasitic nematodes transmitted between ectothermic and homeothermic hosts – such as in the case of the *Anisakis* spp. life-cycle – the stress resulting from different host body temperatures would be a signal for further development in that host, or to maintain a homeostasis [30]. It is generally known that mRNA transcripts are a measure of signals for protein synthesis by an organism in relation to temperature [55]. Thus, the genes involved in adaptation to host temperature, parasite development, and host immune response can be differentially expressed in distinct temperature conditions. Temperature appears to modulate survival of *Anisakis* spp. [62, 63], as well as metabolic processes such as ESPs production [4]. Furthermore, temperature and storage time may play important roles in the *post mortem* motility of *A. pegreffii* larvae, indicating that storage temperature higher than 7 °C increases larval motility and therefore migration to fish muscle [14].

Recently, a comparative transcriptomic analysis of L3 and L4 *A. simplex* (s. l.) showed that several protein metabolism-related genes, likely involved in the host invading tissues, were highly expressed in L3 larvae of *A. simplex* (s. l.) [30]. In particular, the mRNA expression levels of some selected genes (i.e., *Nas-13*, *EF-TsMt*, *SFX2*, *dhs*) were found to be significantly higher in *A. simplex* (s. l.) third stage larvae, compared to the fourth stage larvae [30]. Furthermore, the expression patterns of Heat shock proteins (i.e., *Hsp70* and *Hsp90*) appeared to be modulated in L3 versus L4 stage larvae of *A. pegreffii*, with higher expression profiles in L4 larvae [12]. However, the expression profiles of the genes coding immuno-related proteins in L3 larvae of *Anisakis* in response to the temperature were never investigated.

The aim of this study was to investigate the impact of temperature changes on the gene expression profiles of *A. pegreffii* proteins previously found to be targets of human IgE-mediated immune response to L3 larvae, i.e. the Kunitz-type trypsin inhibitor, *A.peg-1*; the glycoprotein *A.peg-7*; and the myoglobin, *A.peg-13*. A qRT-PCR method to detect gene transcript levels was developed. Gene expression profiles were analysed in *A. pegreffii* L3, cultured *in vitro*, in response to different temperature conditions (i.e., 20 °C, 37 °C, and 7 °C), which are encountered by a third stage larva of the parasite species in ectothermic, homeothermic hosts, and under a cold stressed condition, respectively.

## Materials and methods

### Sampling and experimental design

Live *Anisakis* spp. larvae were collected from *Engraulis encrasicolus* anchovies caught in the Adriatic Sea (off the S. Benedetto del Tronto coast), where high rates of infection with the target parasite species, i.e. *A. pegreffii*, have previously been recorded [15]. After the capture, the fish were maintained at 2 °C, using a data logger, until the parasitological examination. The gentle removal of *Anisakis* spp. larvae, and checking for their integrity – the last procedure under a dissecting microscope – was performed in a refrigerated room (2 °C).

Live and not disrupted larvae of *Anisakis* spp. were washed in saline solution (0.9%), several times, and then treated for 1 min, with 4% acetic acid to inhibit bacterial contamination.

In order to analyse gene expression profiles and excretory secretory products released, following temperature exposure, the larvae were cultured *in vitro* at chosen thermal conditions. These were 7 °C, temperature at which a significant increase of *A. pegreffii* motility *post mortem* of the fish host was previously observed [14]; 20 °C, average temperature of an ectothermic fish host infected by *A. pegreffii* in the Mediterranean Sea; and 37 °C, temperature of the definitive homeothermic cetacean host, as well as of the accidental human host. The gene expression and the excretory secretory products released were analysed after 24 h incubation. For each experimental condition, 50 larvae were seeded in 3.5 cm Petri Dishes in 3.5 mL of PBS 1X containing penicillin (1%) and streptomycin (1%) and incubated at the distinct temperature, 7 °C, 20 °C and 37 °C in 5% CO<sub>2</sub>. As control conditions, larvae (50) were also kept at 2 °C. A total of 200 *Anisakis* spp. larvae were used. The experiments were prepared in triplicate and repeated at the three temperatures.

At 24 h post-incubation, the excretory secretory products were stored at −80 °C for protein characterisation by sodium dodecyl sulfate–polyacrylamide gel electrophoresis (SDS-PAGE) and the surviving *Anisakis* spp. larvae were collected, and stored in RNA later at −80 °C for RNA and DNA extraction. A larva was considered dead if it was not motile. At 2 °C, the larval motility of *A. pegreffii* was observed to be almost absent *in vivo* [14], as well as *in vitro* experiments (Mattiucci pers. observ.).

## DNA and RNA extraction

Both DNA and RNA were extracted from each individual *Anisakis* larva used in the experiments, using TRIzol reagent (Invitrogen, Carlsbad, CA, USA), according to the manufacturer's instructions. Briefly, each larva was homogenised using a motorised pestle and homogenised tissue in 1 mL of TRIzol, with the addition of 0.2 mL chloroform. The mixture was vortexed and centrifuged (12,000 ×g, 15 min, 4 °C) resulting in an aqueous (containing RNA) and organic phase (containing DNA and proteins). The aqueous layer was then transferred to a separate tube; the RNA was precipitated with 500 µL of isopropanol at room temperature for 10 min and pelleted by centrifugation (12,000 ×g, 15 min, 4 °C), then washed in 1 mL of 75% ethanol, centrifuged again (7500 ×g, 5 min at 4 °C), and dried for 10–30 min. The pellet was re-suspended in 40 µL of nuclease and RNase-free water at 60 °C for 10 min.

DNA was precipitated from the remaining interphase/organic layer with 300 µL absolute ethanol, and mixed by inverting the tube several times. The mixture was centrifuged (2000 ×g, 5 min, 4 °C), and the upper aqueous layer (containing proteins) was removed. The pellet was washed in 1 mL of 0.1 M sodium citrate in 10% ethanol pH 8.5, and mixed occasionally by gentle inversion. The DNA was stored in sodium citrate/ethanol for 2 h, and the mixture was then centrifuged (8000 ×g, 5 min, 4 °C). The supernatant was discarded with a micropipette and the pellet was re-suspended in 0.3–0.6 mL of 8 mM NaOH. The mixture was centrifuged

(12,000 ×g, 10 min, 4 °C) and the supernatant was transferred to a fresh tube. RNA and DNA concentration and quality were measured by a NanoDrop®TC1-E20 spectrophotometer (BioTek Synergy HT). DNA was stored at −20 °C, while RNA was stored at −80 °C, until use.

## Molecular identification of *Anisakis* spp. larvae

Each *Anisakis* spp. larva used in the gene expression experiments was identified to species level by means of genetic/molecular markers. For this purpose, a multi-locus sequence analysis of mitochondrial (mtDNA *cox-2*) (629 bp) and nuclear (elongation factor *EF1 α-1* of nDNA) (409 bp) genes was applied.

The mitochondrial cytochrome c oxidase subunit II (*cox-2*) gene was amplified using the primers 211F (5'-TTTTCTAGT-TATATAGATTGRTTYAT-3') and 210R (5'-CACCAACT-CTTAAAATTATC-3'). Polymerase chain reaction (PCR) was carried out according to the procedures previously described [39]. The sequences obtained at the mtDNA *cox-2* for those larval specimens analysed in the present study were compared with those already obtained for the same gene in the species *A. pegreffii* and with respect to those from other *Anisakis* spp. previously sequenced [39].

The elongation factor (*EF1 α-1* nDNA) nuclear gene was amplified using the primers EF-F (5'-TCCTCAAGC-GTTGTTATCTGTT-3') and EF-R (5'-AGTTTTGCCAC-TAGCGTTCC-3') and employing experimental conditions as previously described [40]. The sequences obtained at the *EF1 α-1* nDNA for the larval specimens analysed in the present study were compared with those already obtained for the same gene in the species *A. pegreffii* and *A. simplex* (s. s.), under the accession numbers [KT825684](#) and [KT825685](#), respectively. The genomic DNA obtained from those samples is stored at the Department of Public Health and Infectious Diseases (Section of Parasitology) – “Sapienza University of Rome”.

## RT-PCR, amplification of *A.peg-1*, *A.peg-7* and *A.peg-13* cDNA

Total RNA from each individual larva was treated with DNase (DNase I, Invitrogen): 1 µL DNase I (1 U/µL, Invitrogen) was added to 1 µg of RNA sample. RNA concentration and quality were measured by a NanoDrop®TC1-E20 spectrophotometer (BioTek Synergy HT).

High-Capacity cDNA Reverse Transcription Kits (ThermoFisher) were used for cDNA synthesis. The reverse transcription was performed in a final volume of 20 µL, in the presence of dNTP mix, (0.5 mM each), RNase inhibitor (10 U) and with MultiScribe™ Reverse Transcriptase (4 U). Oligo (dT) and random hexamers (0.5 µM) were used as primers. The reaction was carried out in a thermal cycler at 37 °C for 2 h.

To obtain cDNA sequences of *A.peg-1*, *A.peg-7* and *A.peg-13* genes, species-specific primers for *A. pegreffii* larvae were first designed (Table 1), by using Primer3 web software (version 4.1.0), starting from those sequence data at the same

**Table 1.** Primer sequences of target genes coding for antigenic proteins, used in this study.

Gene locus	PCR end-point			Real-time PCR		
	Sequences (5' – 3')	Ta/°C	Size (bp)	Sequences (5' – 3')	Ta/°C	Size (bp)
<i>A. peg-1</i>	F: ATCCTCTTCACATTTCGCTTT R: GGATAATAATGGTCGGGCAA	57 °C	639	F: CATGTGCCGATAAATGCGGG R: CCCTGTGAGCATGCATCCTT	57 °C	130
<i>A. peg-7</i>	F: ACACCTCCATCTGAACAAA R: CCTAACATGCAGGGGATTA	57 °C	899	F: TATCGGAATGCGTGACTGCA R: AGGCAGTTTCCATGGTGTATG	57 °C	130
<i>A. peg-13</i>	F: CATGAAATCACTCGAACACG R: TGTTCCTCCTTGCTGCTCT	55 °C	931	F: AAACATTTCGACGGCTACACC R: CATCGTGGTCTTCTCTGCGA	60 °C	108
<i>GAPDH</i>	–	–	–	F: CCCCTTCATCAACATCGACT R: TCAGTCCCCATTTGATTTT	60 °C	152

*GAPDH*, glyceraldehyde-3-phosphate dehydrogenase (housekeeping gene); PCR, polymerase chain reaction.

gene coding loci, previously deposited in GenBank as *A. simplex* (s. l.) larvae [3, 24, 49]; they were synthesised by Eurofins Genomics (Ebersberg, Germany). The amplification was performed by PCR in a total volume of 25 µL containing 1× PCR buffer, 25 mM MgSO<sub>4</sub>, 2 mM dNTPs (each), 10 mM primer (each) (Table 1), 50 ng cDNA, 0.12 U Taq polymerase in bi-distilled water. PCR was performed as follows: 95 °C for 5 min followed by 35 cycles of 1 min at 95 °C, 1 min at different temperature of annealing for each gene (see Table 1), 1 min at 72 °C with a final extension at 72 °C for 15 min.

The PCR products were separated using agarose gel electrophoresis and, subsequently, the PCR products with expected molecular weight were purified, and sequenced with the same primers used for PCR (Macrogen, Europe). Nucleotide sequences of the Kunitz-type trypsin inhibitor, the glycoprotein and the myoglobin were aligned using ClustalW v2.0 [32].

### Quantitative real-time PCR

The gene-specific primers of the target genes to be used in qRT-PCR were first designed using Primer Expression 3.0 software (Applied Biosystem, USA) from the sequences of the selected *A. simplex* (s. l.) genes available in GenBank. Primer sequences of target genes used in this study in both PCR end point, and qRT-PCR are reported in Table 1. Relative gene expression profiles of L3 stage of *A. pegreffii* under different thermal conditions were evaluated by fluorescent real-time PCR. The cDNA synthesised was used as a template. The housekeeping gene glyceraldehyde-3-phosphate dehydrogenase (*GAPDH*) was evaluated as a reference gene; *GAPDH*-specific primers were employed [11].

The quantitative real-time PCR (qRT-PCR) was carried out in 50 µL of a reaction mixture with 25 µL of 2X SYBR<sup>TM</sup> Green PCR Master Mix (Applied Biosystems<sup>TM</sup>) containing SYBR Green I dye, AmpliTaq Gold DNA polymerase, dUTP and buffer, 1 µL of each primer (10 Mm), 21 µL of bi-distilled water, and 2 µL of cDNA. PCR amplification was carried out using a gradient cyler StepOnePlus<sup>TM</sup> Real-Time PCR Detection System (Applied Biosystems<sup>TM</sup>). The conditions used were as follows: 95 °C for 10 min, followed by 40 cycles of 95 °C for 15 s and 60 °C, according to the primers used, for 1 s. Melting curve data were collected at 55–95 °C. All reactions were performed three times, in triplicate. Amplification data were gathered and analysed. Relative expression was

calculated using the  $\Delta\Delta C_t$  method [34], with all expression normalised to *GAPDH* levels in initial control samples. Relative levels of *GAPDH* were confirmed to be approximately equal across all treatments. The qRT-PCR experiment was designed and performed according to the MIQE guide recommendation [9].

### SDS-PAGE analysis

SDS-PAGE analysis was carried out on the ESPs obtained from the supernatant of cultured *A. pegreffii* larvae, collected at 7 °C, 20 °C and 37 °C, after 24 h of incubation. ESPs were concentrated as previously described [41]. Briefly, culture supernatant was mixed with 90% acetone (1:1), vortexed for 1 min, and kept in ice for 15 min. Following centrifugation at 1100 ×g for 10 min, the supernatant was discarded and the residual acetone was removed by evaporation at room temperature; the pellet was dissolved in PBS 1X. Protein concentration was determined using the Quick Start Bradford Protein Assay (Bio Rad), with bovine serum albumin as a standard control. For the protein preparation, samples from ESPs were individually diluted 1:1 with Laemmli buffer, and then heated at 95 °C for 5 min. Protein electrophoresis was carried out in Mini-PROTEAN 3 Cell (Bio-Rad, Hercules, CA, USA) (12% polyacrylamide separating gel with 5% stacking gel), following the manufacturer's instructions.

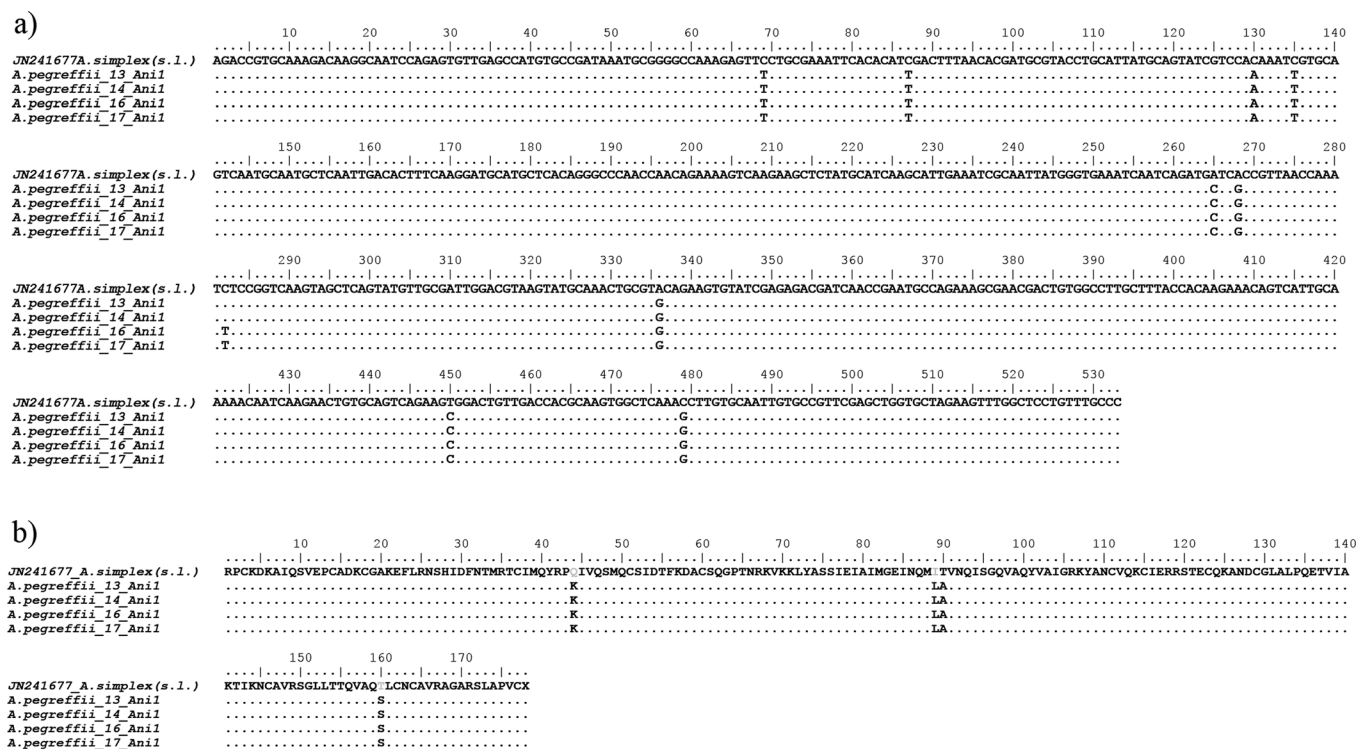
### Statistical analysis

Statistical analyses were carried out using Prism8 Statistical Software from GraphPad Prism 6.0 (GraphPad Software, Inc., La Jolla, CA). Shapiro–Wilk test was performed to check the normality of the data. The one-way test was employed to compare three groups of data, while the Student's *t*-test was used to assess the occurrence of significant differences between the two sets of data. All data were expressed as mean (*M*) ± standard deviation (*SD*). Significance was set at *p* < 0.05.

## Results

### Molecular identification of *A. pegreffii* larvae

On the basis of the sequence analysis of the mitochondrial (mtDNA *cox-2*) and nuclear (*EF1*  $\alpha$ -1 nDNA) gene loci, the



**Figure 1.** Nucleotide and amino acid sequence alignment of *A.peg-1* cDNA. (a) Nucleotide sequence alignment obtained from *A.pegreffii* larvae from the present study in comparison with those previously deposited in GenBank as *A. simplex* (s. l.) (Accession No. JN241677). Dots indicate identity with the consensus sequence. (b) Amino acid sequence alignment of the deduced amino acid sequences of the *A.peg-1* allergen showing the variable sites between *A.pegreffii*, and previously reported *A. simplex* (s. l.). Dots represent residues identical to the reference *Ani s 1* sequence.

*Anisakis* L3 larvae employed in the present study were assigned to the species *A.pegreffii*. The obtained mtDNA *cox-2* sequences showed 99% or 100% similarity with sequences previously deposited in GenBank for *A.pegreffii*. Further, the same larval *Anisakis* specimens were confirmed to belong to the species *A.pegreffii*, as defined by the presence of the specific nucleotide residues present in the 409 bp length *EF1*  $\alpha-1$  nDNA sequences, i.e. a T and C nucleotide in position 186 and 286, respectively that have shown to be diagnostic molecular features of *A.pegreffii* [40].

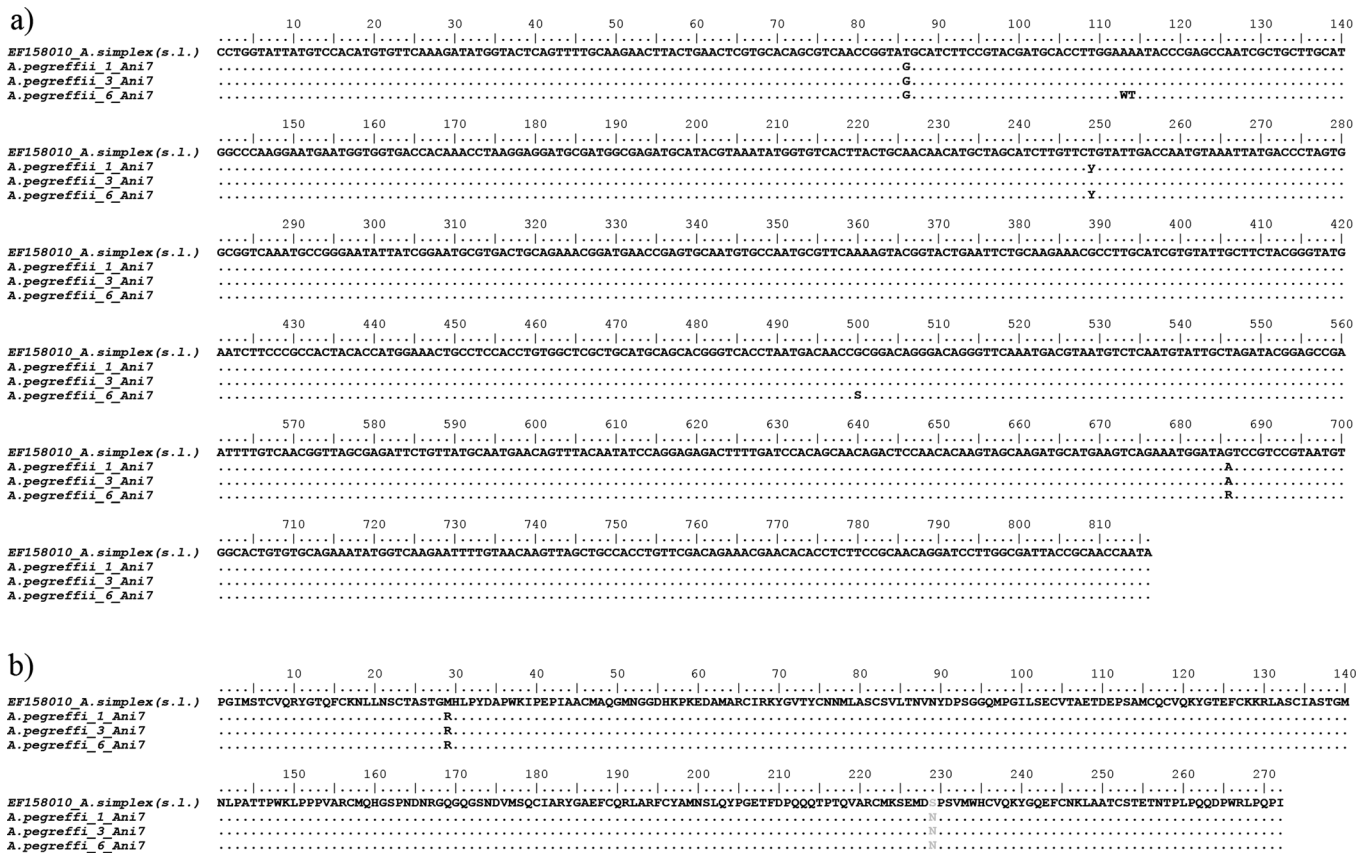
### Sequencing of antigenic ESPs in L3 of *A.pegreffii*

The *Ani s 1*, *Ani s 7* and *Ani s 13* gene sequences obtained in the present study for the species *A.pegreffii* are indicated here as *A.peg-1*, *A.peg-7* and *A.peg-13*, as previously described in the literature [1, 3, 24, 49, 54, 58]. Comparison of the sequences revealed sequences of 534 bp, 816 bp and 931 bp, respectively (Figs. 1–3). Nucleotide sequences of *A.peg-1*, *A.peg-7* and *A.peg-13* showed some nucleotide differences with respect to those previously deposited as *A. simplex* (s. l.) in GenBank. The *A.peg-1* gene locus showed 10 variable bases at positions 69, 87, 130, 135, 265, 268, 282, 336, 450 and 479, in comparison with those of *A. simplex* (s. l.) previously deposited in GenBank (Accession No. JN241677) (Fig. 1a).

Four base positions 44, 89, 90 and 160 were found in the amino acid sequence alignment of *A.peg-1* in *A.pegreffii* compared to the *A. simplex* (s. l.) sequence (Fig. 1b). The *A.peg-7* gene obtained in the present study showed variable nucleotides at positions 86, 113, 114, 249, 500, and 686 in *A.pegreffii* when compared with those previously deposited in GenBank as *A. simplex* (s. l.) (Fig. 2a) (Accession No. EF158010). Two variable bases at positions 29 and 229 were found in the amino acid sequence alignment of *A.peg-7* in *A.pegreffii* with respect to *A. simplex* (s. l.) (Fig. 2b). Finally, the *A.peg-13* gene locus obtained in the present study showed several variable bp sites, with respect to that previously deposited in GenBank as *A.pegreffii* (Accession No. LC209224). Six variable bases at positions 82, 117, 118, 120, 121, and 249 were found in the amino acid sequence alignment of the protein, with respect to that available sequence (Fig. 3a and b). Sequences obtained at these gene loci for the species *A.pegreffii* were deposited in GenBank with the following accession numbers: MG962417, MG962418, MG962419, MG962420 (*A.peg-1*); MG962411, MG962412, MG962413 (*A.peg-7*) and MG962414, MG962415, MG962416 (*A.peg-13*).

### Gene expression analysis

Quantitative real-time PCR analysis (qRT-PCR) revealed differential sensitivity of the three target genes in response to



**Figure 2.** Nucleotide and amino acid sequence alignment of *A.peg-7* cDNA. (a) Nucleotide sequence alignment obtained from *A. pegreffii* larvae from the present study with respect to the internal *Ani s 7* cDNA (nucleotide [nt] 1203–2139) fragment [a potential antigenic region] of those previously deposited in GenBank as *A. simplex* (s. l.) (Accession No.: EF158010). Dots indicate identity with the consensus sequence. (b) Amino acid sequence alignment of the deduced amino acid sequences of the *A.peg-7* allergen showing the variable sites between *A. pegreffii*, and previously reported *A. simplex* (s. l.). Dots represent residues identical to the reference *Ani s 7* sequence.

the exposure to the chosen temperature conditions in third larval stage of *A. pegreffii*. The Shapiro–Wilk tests supported a normal distribution of the data obtained from the qRT-PCR assay tests (all tests  $p < 0.05$ ).

Figure 4 summarises the profile expression patterns of the *A.peg-1*, *A.peg-7* and *A.peg-13* genes as detected by qRT-PCR. Changes in expression levels of *A.peg-1* appeared to be highly significant ( $p < 0.0001$ ) among the three distinct temperature exposure conditions chosen by analysis of variance (ANOVA) test (Table 2). When the comparison was performed between pair samples employing Student's *t* test, the gene expression of *A.peg-1* after 24 h was not significantly down-regulated by exposure to a cold temperature (7 °C), as compared to the control (larvae maintained at 2 °C). However, an increase of the temperature to 20 °C and 37 °C appeared to significantly trigger the expression of *A.peg-1*, with respect to the control ( $p = 0.026$ , and  $p < 0.0001$ , respectively). Furthermore, a significant increase was observed between *A.peg-1* at 37 °C versus 20 °C ( $p < 0.001$ ).

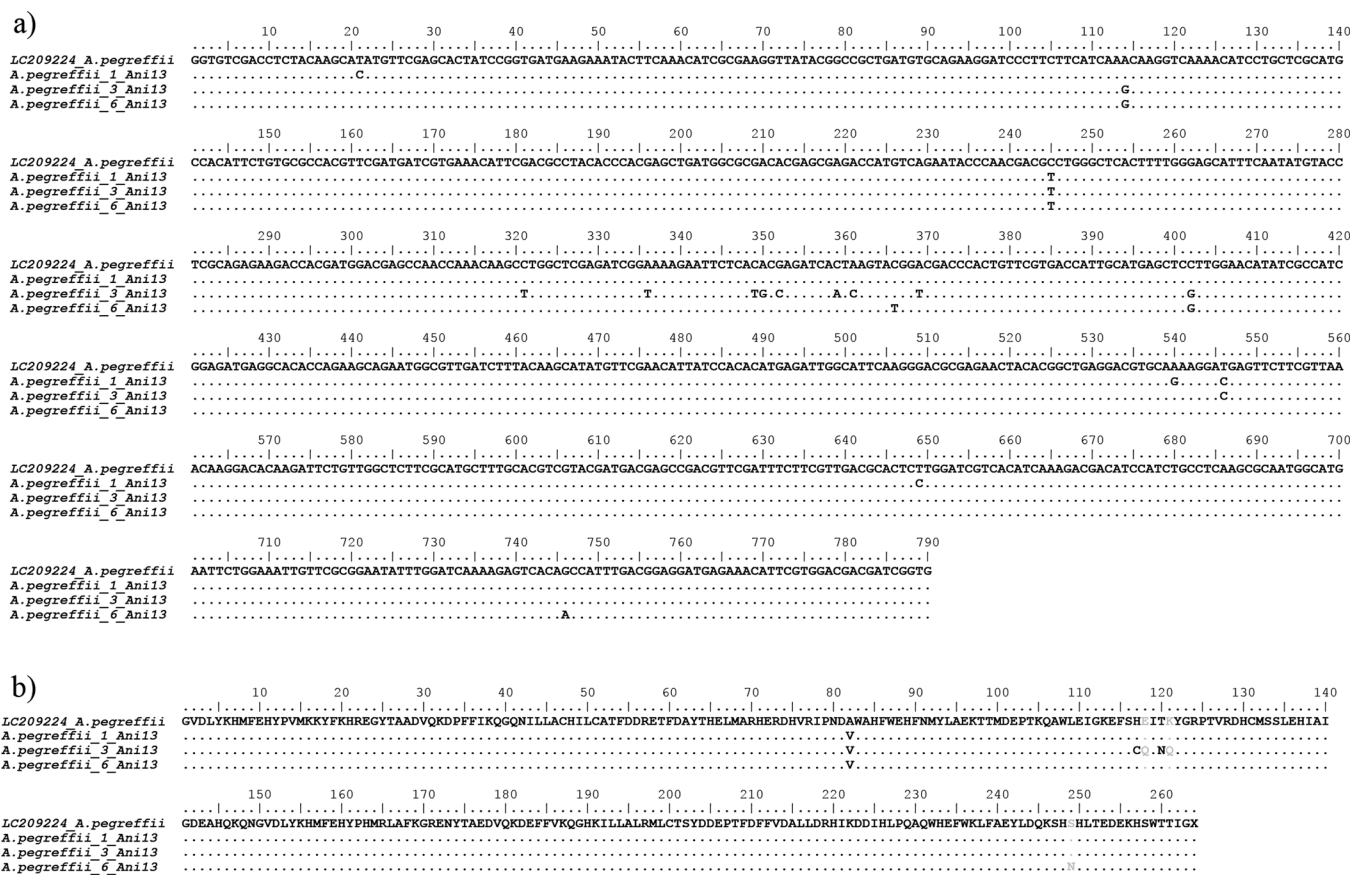
Regarding the *A.peg-13* transcripts, significantly higher gene expression was found for each temperature condition in comparison with the control. Already at 7 °C, an increase in gene expression occurred ( $p = 0.0092$ ) and it was maintained

throughout the increasing temperature, with a slight decrease at 20 °C ( $p = 0.0292$ ), and with a maximum expression at 37 °C, when compared to the control (2 °C) ( $p = 0.0004$ ) (Fig. 4). However, the relative gene expression of the myoglobin, did not show a significant ANOVA value ( $p = 0.1795$ ), in comparison with the relative expression profiles reached at different temperature conditions (Table 2).

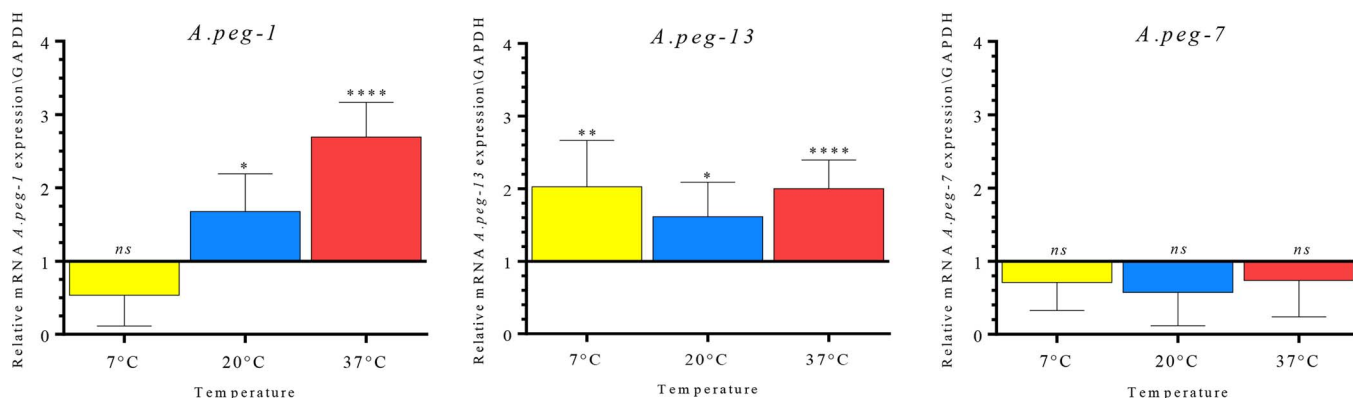
On the contrary, the transcript levels of *A.peg-7* were not significantly modulated by distinct temperature conditions (ANOVA  $p = 0.7111$ ) (Table 2). A general trend of down-regulation of *A.peg-7* was observed at each temperature condition, as compared to the control, with a decrease, although not significant ( $p = 0.0970$ ) (Fig. 4).

### Protein characterisation

The observed gene expression patterns were in accordance with the analysis of the relative protein levels of the parasite at the three distinct temperature conditions in SDS-PAGE. While no bands were detected in the supernatants of *A. pegreffii* larvae maintained at 2 °C for 24 h, a band likely to correspond to the *A.peg-13*, 37 kDa protein, was detected in the supernatants of larvae at the three different temperature conditions



**Figure 3.** Nucleotide and amino acid sequence alignment of *A.peg-13* cDNA. (a) Nucleotide sequence alignment obtained from *A.pegreffii* larvae from the present study in comparison with those previously deposited in GenBank for *A. simplex* (s. l.) (Accession No.: LC209224). Dots indicate identity with the consensus sequence. (b) Amino acid sequence alignment of the deduced amino acid sequences of the *A.peg-13* allergen showing the variable sites between *A.pegreffii*, and previously reported *A. simplex* (s. l.). Dots represent residues identical to the reference *Ani s 13* sequence.



**Figure 4.** Relative expression profiles of the gene coding for the ESPs proteins, *A.peg-1*, *A.peg-7*, *A.peg-13* (shown vertically on the right side of the graph), normalised to the geometric mean of GAPDH (*gpd2*), in *A.pegreffii* larvae, in response to temperature conditions (7 °C, 20 °C and 37 °C, after 24 h). The control at 2 °C is shown as normalised to a value of 1. Each value represents the  $M \pm SD$  of three biological replicates. Significant differential expression was assessed by Student's *t* test. Significance was fixed at  $p < 0.05$  [ $*p < 0.05$ ,  $**p < 0.01$ ,  $***p < 0.001$ ,  $p < 0.0001$ ].

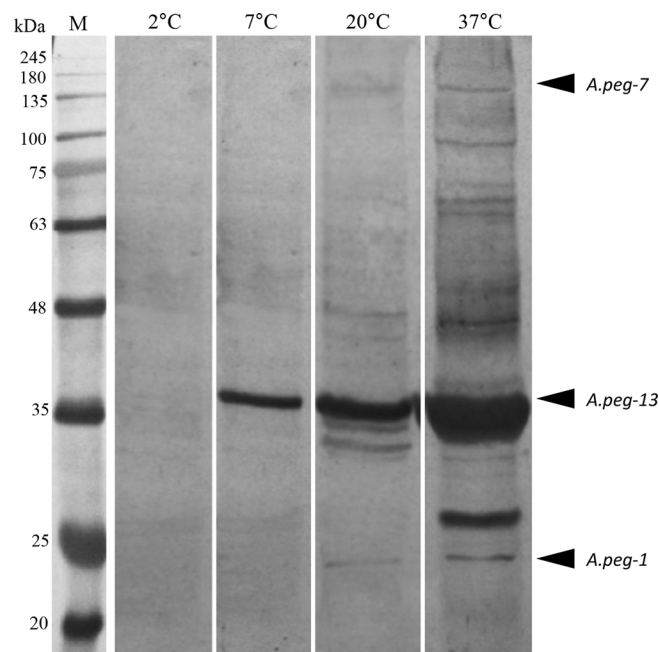
(7 °C, 20 °C and 37 °C). A 24 kDa molecule, likely corresponding to *A.peg-1*, was observed only in the culture media of *A.pegreffii* larvae maintained at 20 °C and 37 °C. Finally,

another band of molecular weight around 139 kDa likely corresponding to *A.peg-7* was revealed at 37 °C, while, to a lesser extent, at 7 °C and 20 °C (Fig. 5).

**Table 2.** One-way ANOVA analysis on the relative gene expression profiles of *A.peg-1*, *A.peg-7* and *A.peg-13*, in response to temperature conditions.

Gene	df	MS	F	p
<i>A.peg-1</i>	2	10.49	47.09	****
<i>A.peg-7</i>	2	0.070	0.345	ns
<i>A.peg-13</i>	2	0.485	1.846	ns

Abbreviations: ANOVA, analysis of variance; *df*, degrees of freedom; *F*, *F* ratio; *MS*, mean square; ns, not significant. Significance was fixed at  $p < 0.05$  [\*\*\*\* $p < 0.0001$ ].



**Figure 5.** Excretory secretory proteins from advanced third stage larvae of *A. pegreffii* (*A.peg-1*, *A.peg-7*, *A.peg-13*) cultured *in vitro* in response to temperature (7 °C, 20 °C and 37 °C, after 24 h). These proteins were examined by SDS-PAGE. Supernatant of *A. pegreffii* maintained at 2 °C, used as control. M: marker.

## Discussion

*Anisakis* spp. larvae produce and release ESPs which may play a role during the development stages of their life cycle. In addition, the relative abundance and function of ESPs are considered to be molecular determinants in defining the host specificity of different *Anisakis* species [45]. It has also been suggested that ESPs in the third stage larvae of *Anisakis* vary quantitatively, depending on the type of physiological condition of the natural host groups (fish and mammals), as well as of the accidental ones (human host). The changing of thermal conditions experienced by *A. pegreffii* in the microhabitat of ectothermic and homeothermic hosts, involved in its life cycle, would require, among the others, molecular and biochemical responses to temperature, also as a result of ecological adaptation of the parasite species to these hosts. Indeed, for instance, temperature was found to be a sensitive parameter to trigger the development of *A. pegreffii* L3 *in vitro* cultured to L4, up to the

adult stage (Mattiucci pers. observ.). A temperature-dependent relative concentration of ES proteins produced by *A. simplex* larvae, after incubation at different temperatures was previously shown [4].

The present study represents the first analysis, by using an experimental approach, on the expression patterns of genes coding for ES antigenic proteins, which were found to elicit antibody response (IgE) in humans. Indeed, target ES products in this study have already been described as the most important antigens responsible for IgE sensitisation in humans by *A. pegreffii* [41]. In *A. simplex* (s. l.), the antigen *Ani s 1* contains a Kunitz-domain [29, 35, 36, 57], with trypsin inhibitor activity and aspartic proteases [49]. Proteins with Kunitz domains are degrading enzymes that act as protease inhibitors, with a functionally conserved role in cuticle formation in a diverse range of nematodes, and possibly involved in the inhibition of thrombin and coagulation factors in the homeothermic accidental human host [44]. Proteins with Kunitz domains, showing homology with *Ani s 1*, have been found in expressed transcript products obtained from pharyngeal tissues of *A. pegreffii* and *A. simplex* (s. s.) larvae [10]. These proteins have also been previously identified in studies examining the proteolytic enzymatic activity of *Anisakis* spp. [35, 36], showing an optimum of activity at the host body temperature of 36–37 °C, thus supporting the hypothesis that these enzymes are activated during the infection in homeothermic hosts of *Anisakis* spp. In accordance with these findings, we have shown that transcripts of the gene coding for *A.peg-1* from *A. pegreffii* are up-regulated in response to thermal conditions of both 20 °C, and, at a higher and significant extent, at 37 °C. While the larvae exposed to a colder thermal condition (7 °C) were still alive, the transcript levels of *A.peg-1* were observed to be down-regulated – even though not at a significant rate – with respect to the control larval samples maintained at 2 °C temperature. The up-regulation of *A.peg-1* at 20 °C and 37 °C in comparison with the control, and its release in the supernatant of *in vitro* culture, as detected by SDS-PAGE, suggests that this molecule may be related to the temperature conditions, as those found in their intermediate/paratenic fish hosts (on average, 20 °C), and in definitive, as well as in accidental human hosts (37 °C) (Figs. 4 and 5). In particular, the finding of transcripts of *A.peg-1* antigen, which was significantly released at 37 °C after 24 h, also suggests a possible role of *A.peg-1* in tissue invasion in the accidental (human) hosts. In fact, *A.peg-1* has been recognised by the IgE immune response in human serum as described in a case of gastro-allergic anisakiasis (GAA) due to *A. pegreffii* [38, 41]. Further, in an *in vitro* animal model of *Anisakis* infection, it was found that C5BL/6 mice infected with *Anisakis* spp. larvae significantly increased the production of Th17-related cytokines IL6 and IL17A, after the treatment with recombinant *Ani s 1* [13]. Another model, in which Wistar rats were exposed orally to fresh and frozen *Anisakis* larvae, showed that crude larval extracts did not induce significant IL17 by the experimentally infected host [8]. This might suggest that live larvae *A. pegreffii* and ES production of *A.peg-1* protein could trigger different immune recognition and activation pathways in accidental human hosts.

This *in vitro* study seems to indicate in addition that other molecules are up-regulated by the temperature change.



The gene coding for the myoglobin *A.peg-13* is highly expressed at 37 °C and 7 °C, with respect to the control; to a lesser extent, a significant relative expression was found in the larvae exposed to 20 °C (Fig. 4). In ascaridoid nematodes, the function of *Ascaris* haemoglobin (and other nematode myoglobins) is largely unknown. It is thought that myoglobin is able to bind oxygen too tightly to be involved in its delivery, and to sequester oxygen in order to maintain an anaerobic environment [23, 46]. Furthermore, nematode myoglobin can bind and break down nitric oxide (NO) and hydrogen peroxide (H<sub>2</sub>O<sub>2</sub>), suggesting that it may provide protection against host oxidative defences [6, 23, 46]. *Anisakis* spp. myoglobin was previously found in L3 larval stages, and is associated with the excretory secretory products [53]. Also, *A.peg-13* is recognised, at high percentage, by the IgE-immune response in human cases of anisakiasis [24, 41]. The lower relative transcripts of *A.peg-13* observed at 20 °C call for future investigation of gene expression in *A.pegreffii* larvae infecting tissues of intermediate/paratenic hosts.

Differently from the other two genes in our experimental study, expression profiles of the gene coding for the glycoprotein *A.peg-7* did not change significantly at the temperatures and time intervals considered (Fig. 4, Table 2). *A.peg-7* is a glycoprotein which has been considered one of the major excretory secretory (ES) antigens, being detected in 85–100% of patients infected with *A. simplex* (s. l.) [21, 41]. Previous studies have suggested that *Anisakis* spp. larvae secrete ES products whose glycosylated components regulate the fundamental processes of antigen recognition, processing and presentation [4, 64]. On the other hand, the ES glycoprotein of the parasites can down-modulate the host immune response. For instance, in the case of *Schistosoma mansoni* eggs, an ES omega-1 glycoprotein was found to promote Th-2 skewing of dendritic cells (DCs) and T cells during infection [17]. DCs are the antigen-presenting cells (APCs) performing an essential role in the regulation and coordination of innate and adaptive immune responses. DCs are equipped with a wide range of receptors (PRRs-pathogen recognition receptors) for the recognition of parasites. Among the PRRs, the C-type lectins recognise carbohydrate structures on self and non-self glycoproteins and glycolipids [61]. In particular, macrophage C-type lectin (MGL) has been identified as a selective binder of the carbohydrate residue GalNAc-O-S/T (Tn) carried by several parasites as well as expressed by cancer cells [51, 52, 66]. Further, it has been found that the interaction between the MGL lectin expressed by dendritic cells (DCs) and the parasite *A.pegreffii* likely induces a Th-2 switch, involved in IgE-mediated responses against this parasite [50]. Thus, since the transcript levels of *A.peg-7* in *A.pegreffii* seem to be maintained in the selected temperature-conditions investigated in the present study, its gene expression would rather be modulated by the host (both of intermediate and definitive/accidental human hosts) immune response. *Anisakis* has been suggested to be involved in the regulation of IgM response by the intermediate/paratenic host (fish) [26]. Teleost fishes are capable of producing specific immunoglobulins towards parasitic antigens, as an integrated part of adaptive immune response [7, 18, 19, 26, 56]. This would allow the larval worms to establish persistent infections in the fish host.

In our experiments, the expression profiles of this gene were down-regulated (even though not at a significant rate, with respect to the control sample), at 20 °C. On the other hand, significant differential transcripts of the gene *A.peg-7* in *A.pegreffii* larvae, from different tissues of the infected fish host, have been observed (Palomba pers. observ.), thus suggesting a possible role of the fish host immune system in the up-regulation of this gene, when infected by *A.pegreffii* larvae. Merdhana [45] demonstrated that ES products from *C. osculatum* activate most immune genes in a dose-dependent manner. It is noteworthy that a high concentration of *C. osculatum* ES proteins also induced higher expression of the fish host gene indicating activation of T regulatory cells (Tregs) which, in turn, produces inhibitory and anti-inflammatory cytokines in the host.

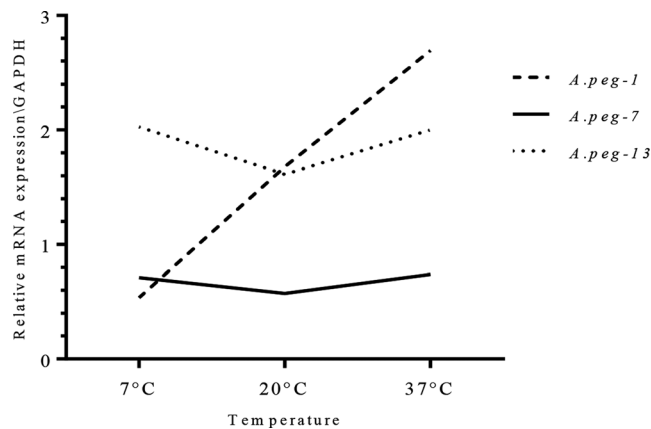
It has also been suggested that using the glycoprotein *A.peg-7*, the parasite *Anisakis* sp. would be able to induce and regulate the Th-2 polarising response associated with *Anisakis* infection in the accidental host (humans) [64]. On the other hand, the capacity of *A.pegreffii* larvae to impair human DC cell biology and function has also been shown experimentally [50], suggesting possible up-regulation of this gene under the effective cellular immune response of the homeothermic human host.

## Conclusions and perspectives

This study presents novel results on the expression of the *A.peg-1*, *A.peg-7* and *A.peg-13* genes coding for proteins among the ES products in the species *A.pegreffii*, having a major immuno-modulatory role in the host response, under the effect of temperature conditions. Particularly, a significant positive correlation between the expression levels of *A.peg-1* and *A.peg-13* was found with the temperature increase at 37 °C. This phenomenon might be able to enhance larval parasite tolerance and adaptive response to the homeothermic host microhabitat, and host immune response. On the contrary, other genes, such as the glycoprotein *A.peg-7*, were down-regulated at the chosen temperature conditions (Fig. 6).

These results seem to suggest that high temperatures may have an effect on the increase of both mRNA productions of these proteins having an adaptive role, such as *A.peg-13* and *A.peg-1* (Fig. 6). Further investigation should be performed to elucidate the role of other variables, such as the influence of immunological factors of both intermediate/paratenic and accidental human hosts, as players in triggering the mRNA gene transcripts and relative protein productions, such as *A.peg-7*, as well as from other target gene-related proteins, among the ESPs produced by the zoonotic parasite *A.pegreffii*.

All three genes were not significantly expressed and released, except in the case of *A.peg-13* which is an adaptive protein, when the larvae were reared at 7 °C. The temperature range between 2 °C and 7 °C seems not to represent an optimum thermal condition for the parasite species *A.pegreffii*. In fact, as we have demonstrated in our previous studies [14], larval migration of *A.pegreffii* from the viscera to the musculature of the fish host (anchovies, *Engraulis encrasicolus*) does not occur when the fish is maintained at the temperature range comprised between 2 °C and 7 °C. Accordingly, in our experiments,



**Figure 6.** Trend of the relative expression of three selected genes coding for the ESPs proteins, *A.peg-1*, *A.peg-7*, *A.peg-13* in response to temperature conditions, using the normalisation reference gene, *gpd2*.

the expression levels of these target genes did not significantly increase at these temperature conditions (Fig. 6). This may be important in storage of fish potentially infected with *A. pegreffii* larvae, before human consumption. The storage of fish at temperatures below 7 °C would impede not only larval motility from the viscera to the musculature, but would also induce a lower level of transcripts of genes coding for parasite-derived ES products having an immunogenic role in humans, as those considered in the present study.

Finally, quantitative RT-PCR assay of target genes would be used, in future studies, for the detection of parasite-derived gene transcripts of those antigenic proteins, in the supernatants of *in vitro* larvae maintained at 37 °C. This, in turn, would enable, in future investigations, the detection of parasite-derived secreted RNA, as possible “biomarkers” of the infection in human anisakiasis.

## Conflict of interest

The authors declare that they have no conflicts of interest.

**Acknowledgements.** This study was supported by a grant from the “Istituto Pasteur Italia-Fondazione Cenci Bolognetti”. We thank the two anonymous referees for their comments on the article.

## References

- Abe N, Teramoto I. 2017. *Anisakis* haemoglobin is a main antigen inducing strong and prolonged immunoreactions in rats. *Parasitology Research*, 116, 2035–2039.
- Aibinu IE, Smooker PM, Lopata L. 2019. *Anisakis* nematodes in fish and shellfish- from infection to allergies. *International Journal for Parasitology, Parasites and Wildlife*, 9, 384–393.
- Anadón A, Romarís F, Escalante M, Rodríguez E, Gárate T, Cuéllar C, Ubeira F. 2009. The *Anisakis simplex* Ani s 7 major allergen as an indicator of true *Anisakis* infections. *Clinical & Experimental Immunology*, 156, 471–478.
- Bahlóol QZ, Skovgaard A, Kania PW, Buchmann K. 2013. Effects of excretory/secretory products from *Anisakis simplex* (Nematoda) on immune gene expression in rainbow trout (*Oncorhynchus mykiss*). *Fish Shellfish Immunology*, 35, 734–739.
- Baird FJ, Su X, Aibinu I, Nolan MJ, Sugiyama H, Otranto D, Lopata AL, Cantacessi C. 2016. The *Anisakis* transcriptome provides a resource for fundamental and applied studies on allergy-causing parasites. *PLOS Neglected Tropical Diseases*, 10, e0004845.
- Barrett J, Brophy P. 2000. *Ascaris* haemoglobin: new tricks for an old protein. *Parasitology Today*, 16, 90–91.
- Buchmann K. 1993. A note on the humoral immune response of infected *Anguilla anguilla* against the gill monogenean *Pseudodactylogyus bini*. *Fish and Shellfish Immunology*, 3, 397–399.
- Bušelić I, Trumbic Z, Hrabar J, Vrbatovic A, Bocina I, Mladineo I. 2018. Molecular and cellular response to experimental *Anisakis pegreffii* (Nematoda, Anisakidae) third-stage larval infection in rats. *Frontiers in Immunology*, 9, 2055.
- Bustin SA, Benes V, Garson JA, Hellemans J, Huggett J, Kubista M, Mueller R, Nolan T, Pfaffl MW, Shipley GL. 2009. The MIQE guidelines: minimum information for publication of quantitative real-time PCR experiments. *Clinical Chemistry*, 55, 611–622.
- Cavallero S, Lombardo F, Su X, Salvemini M, Cantacessi C, D’Amelio S. 2018. Tissue-specific transcriptomes of *Anisakis simplex* (sensu stricto) and *Anisakis pegreffii* reveal potential molecular mechanisms involved in pathogenicity. *Parasites & Vectors*, 11, 31.
- Chen HY, Cheng YS, Grabner DS, Chang SH, Shih HH. 2014. Effect of different temperatures on the expression of the newly characterized heat shock protein 90 (*Hsp90*) in L3 of *Anisakis* spp. isolated from *Scomber australasicus*. *Veterinary Parasitology*, 205, 540–550.
- Chen HY, Cheng YS, Shih HH. 2015. Expression patterns and structural modelling of *Hsp70* and *Hsp90* in a fish-borne zoonotic nematode *Anisakis pegreffii*. *Veterinary Parasitology*, 212, 281–291.
- Cho MK, Park MK, Kang SA, Caballero ML, Perez-Pinar T, Rodriguez-Perez R, Sun Ock M, Jae Cha H, Chul Hong Y, Sun YuH. 2014. Allergenicity of two *Anisakis simplex* allergens evaluated *in vivo* using an experimental mouse model. *Experimental Parasitology*, 146, 71–77.
- Cipriani P, Acerra V, Bellisario B, Sbaraglia GL, Cheleschi R, Nascetti G, Mattiucci S. 2016. Larval migration of the zoonotic parasite *Anisakis pegreffii* (Nematoda: Anisakidae) in European anchovy, *Engraulis encrasicolus*: Implications to seafood safety. *Food Control*, 59, 148–157.
- Cipriani P, Sbaraglia GL, Palomba M, Giuliotti L, Bellisario B, Bušelić I, Mladineo I, Cheleschi R, Nascetti G, Mattiucci S. 2018. *Anisakis pegreffii* (Nematoda: Anisakidae) in European anchovy *Engraulis encrasicolus*, from the Mediterranean Sea: considerations in relation to fishing ground as a driver for parasite distribution. *Fisheries Research*, 202, 59–68.
- Clarke A. 2004. Is there a universal temperature dependence of metabolism? *Functional Ecology*, 18, 243–251.
- Coakley G, Maizels RM, Buck AH. 2015. Exosomes and other extracellular vesicles: the new communicators in parasite infection. *Trends in Parasitology*, 31, 477–489.
- Coscia MR, Morea V, Tramontano A, Oreste U. 2000. Analysis of cDNA sequence encoding the immunoglobulin heavy chain of the antarctic teleost *Trematomus bernacchii*. *Fish & Shellfish Immunology*, 10, 343–357.
- Coscia MR, Oreste U. 1998. Presence of antibodies specific for proteins of *Contracaecum osculatatum* (Rudolphi, 1908) in plasma of several Antarctic teleosts. *Fish & Shellfish Immunology*, 8, 295–302.

20. D'Amelio S, Mathiopoulos K, Brandonisio O, Lucarelli G, Doronzo F, Paggi L. 1999. Diagnosis of a case of gastric anisakidosis by PCR-based restriction fragment length polymorphism analysis. *Parassitologia*, 41, 591–593.
21. Daschner A, Cuellar C, Rodero M. 2012. The *Anisakis* allergy debate: does an evolutionary approach help? *Trends in Parasitology*, 28, 9–15.
22. Fumarola L, Monno R, Ierardi E, Rizzo G, Giannelli G, Lalle M, Pozio E. 2009. *Anisakis pegreffii* etiological agent of gastric infections in two Italian women. *Foodborne pathogens disease*, 6, 1157–1159.
23. Goldberg DE. 1999. Oxygen-avid hemoglobin of *Ascaris*. *Chemical Reviews*, 99, 3371–3378.
24. Gonzalez-Fernandez J, Daschner A, Nieuwenhuizen NE, Lopata AL, Frutos CD, Valls A, Cuellar C. 2015. Haemoglobin, a new major allergen of *Anisakis simplex*. *International Journal for Parasitology*, 45, 399–407.
25. Guardone L, Armani A, Nucera D, Costanzo F, Mattiucci S, Bruschi F. 2018. Human anisakiasis in Italy: a retrospective epidemiological study over two decades. *Parasite*, 25, 41.
26. Haarder S, Kania PW, Buchmann K. 2013. Comparative infectivity of three larval nematode species in three different salmonids. *Parasitology Research*, 112, 2997–3004.
27. Hrabar J, Trumbic Z, Bocina I, Buselic I, Vrbatovic A, Mladineo I. 2019. Interplay between proinflammatory cytokines, miRNA, and tissue lesions in *Anisakis*-infected Sprague-Dawley rats. *PLoS Neglected Tropical Diseases*, 13, e0007397.
28. Iglesias L, Valero A, Benitez R, Adroher FJ. 2001. *In vitro* cultivation of *Anisakis simplex*: pepsin increases survival and moulting from fourth larval to adult stage. *Parasitology*, 123, 285–291.
29. Kennedy MW. 1991. Parasitic Nematodes SH Antigens, Membranes & Genes. Taylor & Francis Ltd, London.
30. Kim JH, Kim JO, Jeon CH, Nam UH, Subramaniam S, Yoo SI, Park JH. 2018. Comparative transcriptome analyses of the third and fourth stage larvae of *Anisakis simplex* (Nematoda: Anisakidae). *Molecular & Biochemical Parasitology*, 226, 24–33.
31. Kobayashi Y, Kakemoto S, Shimakura K, Shiomi K. 2015. Molecular cloning and expression of a new major allergen, *Ani s 14*, from *Anisakis simplex*. *Shokuhin Eiseigaku Zasshi*, 56, 194–199.
32. Larkin MA, Blackshields G, Brown NP, Chenna R, McGettigan PA, McWilliam H, Valentine F, Wallace IM, Wilm A, Lopez R, Thompson JD, Gibson TJ, Higgins DG. 2007. Clustal W and Clustal X version 2.0. *Bioinformatics*, 23, 2947–2948.
33. Lim H, Jung B-K, Cho J, Yooyen T, Shin E-H, Chai J-Y. 2015. Molecular diagnosis of cause of anisakiasis in humans, South Korea. *Emerging Infectious Diseases*, 21, 342.
34. Livak KJ, Schmittgen TD. 2001. Analysis of relative gene expression data using real-time quantitative PCR and the 2<sup>-</sup>(Delta Delta CT) method. *Methods*, 25, 402–408.
35. Matthews BE. 1982. Behaviour and enzyme release by *Anisakis* sp. larvae (Nematoda: Ascaridida). *Journal of Helminthology*, 56, 177–183.
36. Matthews BE. 1984. The source, release and specificity of proteolytic enzyme activity produced by *Anisakis simplex* larvae (Nematoda: Ascaridida) *in vitro*. *Journal of Helminthology*, 58, 175–185.
37. Mattiucci S, Paoletti M, Borrini F, Palumbo M, Palmieri RM, Gomes V, Casati A, Nascetti G. 2011. First molecular identification of the zoonotic parasite *Anisakis pegreffii* (Nematoda: Anisakidae) in a paraffin-embedded granuloma taken from a case of human intestinal anisakiasis in Italy. *BMC Infectious Diseases*, 11, 82.
38. Mattiucci S, Fazii P, De Rosa A, Paoletti M, Megna AS, Glielmo A, De Angelis M, Costa A, Meucci C, Calvaruso V, Sorrentini I, Palma G, Bruschi F, Nascetti G. 2013. Anisakiasis and gastroallergic reactions associated with *Anisakis pegreffii* infection, Italy. *Emerging Infectious Diseases*, 19, 496–499.
39. Mattiucci S, Cipriani P, Webb SC, Paoletti M, Marcer F, Bellisario B, Gibson DI, Nascetti G. 2014. Genetic and morphological approaches distinguish the three sibling species of the *Anisakis simplex* species complex, with a species designation as *Anisakis berlandi* n. sp. for *A. simplex* sp. C (Nematoda: Anisakidae). *Journal of Parasitology*, 100, 199–214.
40. Mattiucci S, Acerra V, Paoletti M, Cipriani P, Levsen A, Webb S, Canestrelli D, Nascetti G. 2016. No more time to stay 'single' in the detection of *Anisakis pegreffii*, *A. simplex* (s.s.) and hybridization events between them: a multi-marker nuclear genotyping approach. *Journal of Parasitology*, 143, 998–1011.
41. Mattiucci S, Colantoni A, Crisafi B, Mori-Ubaldini F, Caponi L, Fazii P, Nascetti G, Bruschi F. 2017a. IgE sensitization to *Anisakis pegreffii* in Italy: Comparison of two methods for the diagnosis of allergic anisakiasis. *Parasite Immunology*, 39, e12440.
42. Mattiucci S, Paoletti M, Colantoni A, Carbone A, Gaeta R, Proietti A, Frattaroli S, Fazii P, Bruschi F, Nascetti G. 2017b. Invasive anisakiasis by the parasite *Anisakis pegreffii* (Nematoda: Anisakidae): diagnosis by real-time PCR hydrolysis probe system and immunoblotting assay. *BMC Infectious Diseases*, 17, 530.
43. Mattiucci S, Cipriani P, Levsen A, Paoletti M, Nascetti G. 2018. Molecular epidemiology of *Anisakis* and anisakiasis: an ecological and evolutionary road map. *Advances in Parasitology*, 99, 93–263.
44. Mehrdana F, Buchmann K. 2017. Excretory/secretory products of anisakid nematodes: biological and pathological roles. *Acta Veterinaria Scandinavica*, 59, 42.
45. Mehrdana F, Kania W, Nazemi S, Buchmann K. 2017. Immunomodulatory effects of excretory/secretory compounds from *Contracaecum osculatatum* larvae in zebrafish inflammation model. *Plos One*, 12, e0181277.
46. Manning DM, Gow AJ, Bonaventura J, Braun R, Dewhirst M, Goldberg DE, Stamler JS. 1999. *Ascaris* haemoglobin is a nitric oxide-activated 'deoxygenase'. *Nature*, 401, 497.
47. Mladineo I, Popović M, Drmić-Hofman I, Poljak V. 2015. A case report of *Anisakis pegreffii* (Nematoda, Anisakidae) identified from archival paraffin sections of a Croatian patient. *BMC Infectious Diseases*, 16, 42.
48. Möller H. 1978. The effects of salinity and temperature on the development and survival of fish parasites. *Journal of Fish Biology*, 12, 311–323.
49. Moneo I, Caballero ML, Gómez F, Ortega E, Alonso MJ. 2000. Isolation and characterization of a major allergen from the fish parasite *Anisakis simplex*. *Journal of Allergy and Clinical Immunology*, 106, 177–182.
50. Napoletano C, Mattiucci S, Colantoni A, Battisti F, Zizzari IG, Rahimi H, Nuti M, Rughetti A. 2018. *Anisakis pegreffii* impacts differentiation and function of human dendritic cells. *Parasite Immunology*, 40, e12527.
51. Napoletano C, Rughetti A, Tarp MPA, Coleman J, Bennett EP, Picco G, Sale P, Denda-Nagai K, Irimura T, Mandel U. 2007. Tumor-associated Tn-MUC1 glycoform is internalized through the macrophage galactose-type C-type lectin and delivered to the HLA class I and II compartments in dendritic cells. *Cancer Research*, 67, 8358–8367.
52. Napoletano C, Zizzari I, Rughetti A, Rahimi H, Irimura T, Clausen H, Wandall HH, Belleudi F, Bellati F, Pierelli L, Frati L, Nuti M. 2012. Targeting of macrophage galactose-type

- C-type lectin (MGL) induces DC signaling and activation. *European Journal of Immunology*, 42, 936–945.
53. Nieuwenhuizen NE, Lopata AL. 2016. *Anisakis* a food-borne parasite that triggers allergic host defences. *International Journal of Parasitology*, 43, 1047–1057.
  54. Park J, Cho MK, Yu HS, Ahn SC. 2012. Identification of a 24 kDa excretory secretory protein in *Anisakis simplex*. *Experimental Parasitology*, 130, 69–72.
  55. Peck LS. 2016. A cold limit to adaptation in the sea. *Trends in Ecology & Evolution*, 31, 13–26.
  56. Priebe K, Huber C, Martlbauer E, Terplan G. 1991. Detection of antibodies against the larva of *Anisakis simplex* in the pollock *Pollachius virens* using ELISA. *Journal of Veterinary Medicine*, 38, 209–214.
  57. Quiazon KM, Santos MD, Yoshinaga T. 2013. *Anisakis* species (Nematoda: Anisakidae) of Dwarf Sperm Whale *Kogia sima* (Owen, 1866) stranded off the Pacific coast of southern Philippine archipelago. *Veterinary Parasitology*, 197, 221–230.
  58. Rodríguez E, Anadón A, García-Bodas E, Romarís F, Iglesias R, Gárate T, Ubeira F. 2008. Novel sequences and epitopes of diagnostic value derived from the *Anisakis simplex* Ani s 7 major allergen. *Journal of Allergy and Clinical Immunology*, 63, 219–225.
  59. Shamsi S, Gasser R, Beveridge I. 2012. Genetic characterization and taxonomy of species of *Anisakis* (Nematoda: Anisakidae) parasitic in Australian marine mammals. *Invertebrate Systematics*, 26, 204–212.
  60. Umehara A, Kawakami Y, Araki J, Uchida A. 2007. Molecular identification of the etiological agent of the human anisakiasis in Japan. *Parasitology International*, 56, 211–215.
  61. van Vliet SJ, Saeland E, van Kooyk Y. 2008. Sweet preferences of MGL: carbohydrate specificity and function. *Trends in Immunology*, 29, 83–90.
  62. Vidacek S, De las Heras C, Solas MT, Mendiz A, Rodríguez-Mahillo AI, Tejada M. 2010. Antigenicity and viability of *Anisakis* larvae infesting hake heated at different time-temperature conditions. *Journal of Food Protection*, 73, 62–68.
  63. Vidacek S, De las Heras C, Solas MT, García M, Mendiz A, Tejada M. 2011. Viability and antigenicity of *Anisakis simplex* after conventional and microwave heating at fixed temperatures. *Journal of Food Protection*, 74, e2126.
  64. White RR, Artavanis-Tsakonas K. 2012. How helminths use excretory secretory fractions to modulate dendritic cells. *Virulence*, 3, 668–677.
  65. Widmann M. 2013. Impact of large-scale environmental features changes on host-parasite interaction in marine and freshwater ecosystems. *BioSciences Master Reviews*, 1, 1–9.
  66. Zizzari IG, Napoletano C, Battisti F, Rahimi H, Caponnetto S, Pierelli L, Nuti M, Rughetti A. 2015. MGL receptor and immunity: when the ligand can make the difference. *Journal of Immunology Research*, 2015, 450695.

**Cite this article as:** Palomba M, Paoletti M, Colantoni A, Rughetti A, Nascetti G & Mattiucci S. 2019. Gene expression profiles of antigenic proteins of third stage larvae of the zoonotic nematode *Anisakis pegreffii* in response to temperature conditions. *Parasite* 26, 52.

## PARASITE

An international open-access, peer-reviewed, online journal publishing high quality papers on all aspects of human and animal parasitology

Reviews, articles and short notes may be submitted. Fields include, but are not limited to: general, medical and veterinary parasitology; morphology, including ultrastructure; parasite systematics, including entomology, acarology, helminthology and protistology, and molecular analyses; molecular biology and biochemistry; immunology of parasitic diseases; host-parasite relationships; ecology and life history of parasites; epidemiology; therapeutics; new diagnostic tools.

All papers in Parasite are published in English. Manuscripts should have a broad interest and must not have been published or submitted elsewhere. No limit is imposed on the length of manuscripts.

**Parasite** (open-access) continues **Parasite** (print and online editions, 1994–2012) and **Annales de Parasitologie Humaine et Comparée** (1923–1993) and is the official journal of the Société Française de Parasitologie.

Editor-in-Chief:  
Jean-Lou Justine, Paris

Submit your manuscript at  
<http://parasite.edmgr.com/>