

Phosphodiesterase 10A IgG

A novel biomarker of paraneoplastic neurologic autoimmunity

Anastasia Zekeridou, MD, Thomas Kryzer, AS, Yong Guo, MD, Anhar Hassan, MD, Vanda Lennon, MD, PhD, Claudia F. Lucchinetti, MD, Sean Pittock, MD, and Andrew McKeon, MD

Neurology® 2019;93:e815-e822. doi:10.1212/WNL.0000000000007971

Correspondence

Dr. Zekeridou
zekeridou.anastasia@mayo.edu

Abstract

Objective

To describe a novel antibody biomarker of neurologic paraneoplastic autoimmunity specific for phosphodiesterase 10A (PDE10A), a striatum-enriched phosphodiesterase, and to characterize the clinical phenotype of patients with PDE10A immunoglobulin G (IgG).

Methods

We describe 7 patients with autoantibodies specific for PDE10A identified in the Mayo Clinic Neuroimmunology Laboratory. Patient specimens (sera, 7; CSF, 4) produced identical basal ganglia-predominant synaptic staining of murine brain tissue by indirect immunofluorescence. The autoantigen was identified by immunoprecipitation and mass spectrometry as PDE10A, and confirmed by antigen-specific recombinant Western blot and cell-based assays, and immune absorption experiments.

Results

The median patient age was 70 years (range 66–76); 4 were men. Four patients with clinical information available had movement disorders (hyperkinetic in 3 [chorea, ballismus, dystonia] and parkinsonism in 1). All patients but one had cancer (lung [adenocarcinoma 1, squamous cell carcinoma 1, poorly differentiated mesenchymal carcinoma 1], renal adenocarcinoma 2, and pancreatic adenocarcinoma 1). Two of the 7 patients developed hyperkinetic movement disorders during treatment with immune checkpoint inhibitors (nivolumab and pembrolizumab), though none of 26 cancer control patients treated with immune checkpoint inhibitors harbored PDE10A IgG in their serum. MRIs from those 2 patients with hyperkinetic movement disorders demonstrated fluid-attenuated inversion recovery/T2 basal ganglia hyperintensities, and their CSF harbored unique oligoclonal bands. One of those 2 patients had substantial improvement after corticosteroids. One patient's renal adenocarcinoma expressed PDE10A by immunohistochemistry.

Conclusions

PDE10A IgG defines a novel rare neurologic autoimmune syndrome and expands the spectrum of diagnosable paraneoplastic CNS disorders. The intracellular location of PDE10A suggests a T-cell-mediated pathology targeting cells displaying MHC1-bound PDE10A peptides.

RELATED ARTICLE

Editorial

PDE10A antibodies in autoimmune encephalitis: A possible marker of cancer immunotherapy?

Page 327

MORE ONLINE

Video

Podcast

Dr. Stacey Clardy talks with Dr. Anastasia Zekeridou about her paper on phosphodiesterase 10A IgG, a novel biomarker of paraneoplastic neurologic autoimmunity.

[NPub.org/tmo35v](https://www.ncbi.nlm.nih.gov/pmc/articles/PMC6535555/)

From the Departments of Laboratory Medicine and Pathology (A.Z., T.K., V.L., S.P., A.M.), Neurology (A.Z., Y.G., A.H., V.L., C.F.L., S.P., A.M.), and Immunology (V.L.), Mayo Clinic, Rochester, MN.

Go to [Neurology.org/N](https://www.neurology.org/N) for full disclosures. Funding information and disclosures deemed relevant by the authors, if any, are provided at the end of the article.

The Article Processing Charge was funded by the authors.

This is an open access article distributed under the terms of the Creative Commons Attribution-NonCommercial-NoDerivatives License 4.0 (CC BY-NC-ND), which permits downloading and sharing the work provided it is properly cited. The work cannot be changed in any way or used commercially without permission from the journal.

Glossary

CBA = cell-based assay; **FLAIR** = fluid-attenuated inversion recovery; **ICI** = immune checkpoint inhibitors; **IFA** = indirect immunofluorescence assay; **IgG** = immunoglobulin G; **PBS** = phosphate-buffered saline; **PCAI** = Purkinje-cell cytoplasmic antibody 1; **PDE10A** = phosphodiesterase 10A; **WB** = Western blot.

Manifestations of neurologic paraneoplastic autoimmunity can involve any level of the neuraxis.^{1,2} Commonly recognized cancers are small cell lung cancer and thymoma.^{3,4} Immune checkpoint inhibitors (ICI) used for cancer are monoclonal antibodies that neutralize negative regulatory steps in T-cell immune responses, and thus augment antitumor immunity. As a consequence, there is an increase in autoimmune complications, including potentially novel ones.⁵⁻⁷

Autoimmune movement disorders have been described in a paraneoplastic context.⁸⁻¹⁰ For example, CRMP5 autoimmunity is accompanied by chorea and T2 basal ganglia MRI hyperintensities.¹¹

We describe a novel autoantibody biomarker specific for phosphodiesterase 10A (PDE10A), detected in 7 patients, the majority of whom presented with a movement disorder.

Methods

Patients

The Mayo Clinic Neuroimmunology Laboratory database (>400,000 samples tested by indirect immunofluorescence assay using murine tissue from 2011 to 2017) was interrogated for samples with predominant basal ganglia staining. Twenty-one specimens with available quantities were identified and retested by indirect immunofluorescence assay (IFA) using murine tissue. We identified 6 serum and 2 CSF specimens from 5 patients that yielded a similar distinctive immunoglobulin G (IgG) staining pattern when applied to murine brain. Two more patients (1 serum and 2 CSF specimens) were identified prospectively (total 7 sera and 4 CSFs). Clinical information was abstracted from electronic files (1 patient) or provided by referring physicians (6 patients). Control sera included 33 healthy participants, 10 patients with Huntington disease, 4 patients with autoimmune CRMP5-related chorea, and 53 patients with carcinomas with or without neurologic autoimmunity not treated with ICI (7 squamous cell, 15 lung adenocarcinomas, 30 renal cell, and 1 renal and squamous cell) and 26 with ICI treatment (single agents or combinations) for different cancers (14 melanoma, 5 non-small cell lung cancer, 3 urothelial carcinomas, 2 neuroendocrine tumors, and 1 each of hepatocellular carcinoma and glioblastoma), with or without associated neurologic autoimmunity.

Standard protocol approvals, registrations, and patient consents

The Mayo Clinic Institutional Review Board approved this study and patient consent was given for the supplementary video.

Laboratory methods

Laboratory methods are as previously reported.¹²

Tissue IFA and immunohistochemistry

Patients' specimens were tested on murine tissue cryosections at screening dilutions of 1:240 (serum; pre-absorbed with liver powder) or 1:2 (CSF). The antibody specific for human PDE10A used was a rabbit polyclonal from Invitrogen (Carlsbad, CA) (catalog # PA5-31293). Secondary antibodies (from SouthernBiotech [Birmingham, AL]: FITC-labeled goat anti-human IgG and anti-rabbit IgG and TRITC-labeled goat anti-human IgG) were used at 1:200 dilution.

Briefly, sections were fixed with 4% paraformaldehyde for 1 minute, washed (phosphate-buffered saline [PBS]), permeabilized with 0.5% CHAPS (C32H58N2O7S) for 1 minute, and washed (PBS). Normal goat serum (10% diluted in PBS) was applied for 1 hour and sections were then incubated with patient serum or CSF for 40 minutes, washed, incubated with secondary antibodies for 30 minutes, and washed.

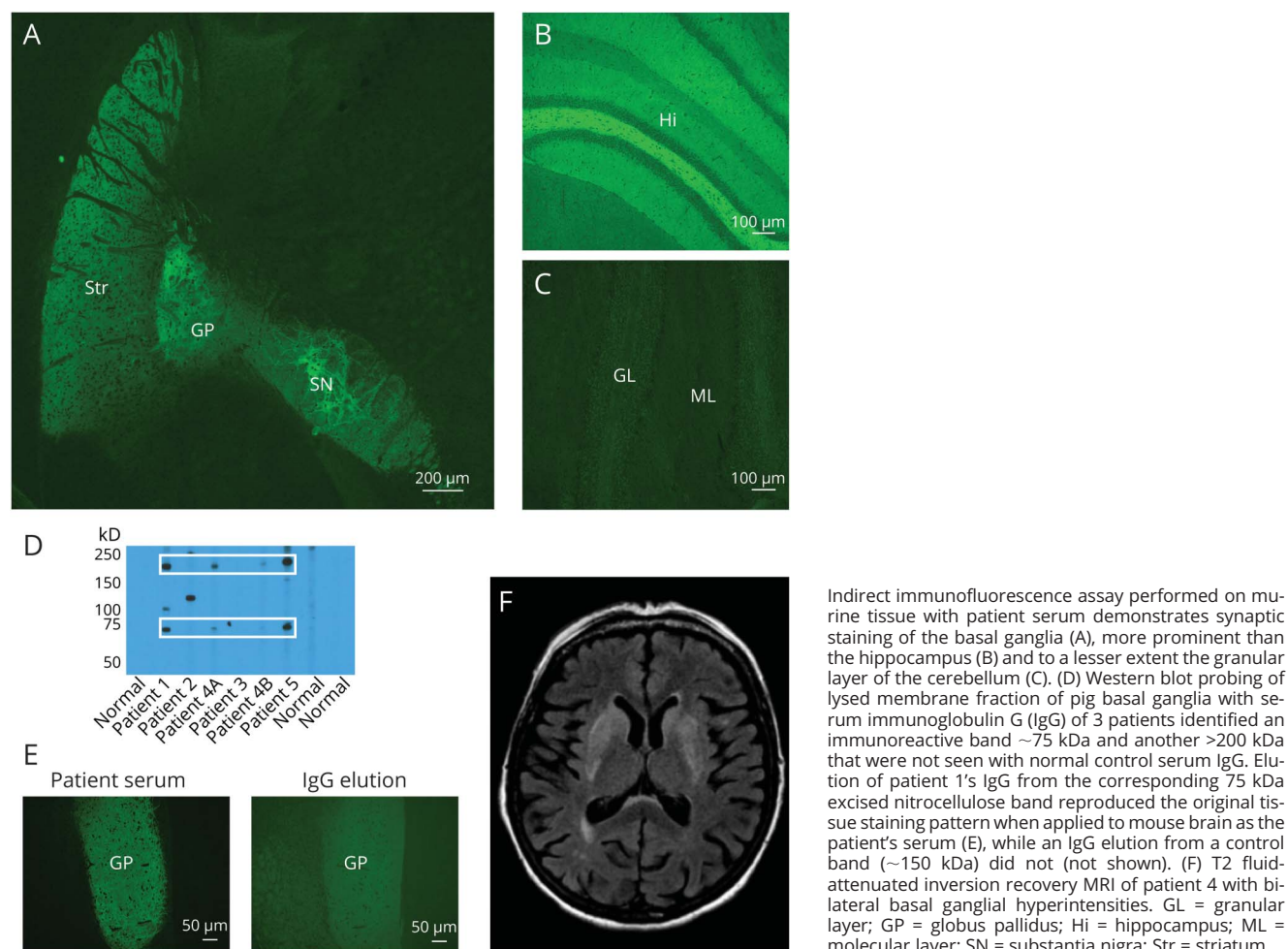
Formalin-fixed paraffin-embedded sections (5 μ m) of renal cell carcinoma from patient 4 and normal human kidney were stained immunohistochemically using the specific PDE10A antibody (1:500 dilutions) with overnight incubation at 4°C.

Protein characterization

Antigen preparation

Porcine basal ganglia were identified macroscopically, dissected, frozen, and stored at -80°C . Immunoreactivity of patients' sera was confirmed in cryosections by IFA. Cytoplasmic and membrane extraction fractions were prepared. In brief, homogenized tissue (250 mM sucrose, 50 mM Tris-HCl [pH 7.4], 5 mM MgCl, 1 mM DTT, and protease inhibitor tablets [cOmplete, Mini; Sigma-Aldrich, St. Louis, MO]) was centrifuged at 800g twice to remove nuclei. The clarified supernatant (after centrifugation at 100,000g) was stored at -80°C (cytoplasmic fraction). The pellet was extracted for 1 hour (20 mM Tris-HCl [pH 7.8], 0.4M NaCl, 15% glycerol, 1.5% Triton-X, 1 mM DTT, and protease inhibitors), centrifuged at 10,000g, and the supernatant (membrane extraction fraction) was stored at -80°C . Immunoreactivity with patients' sera was found in both fractions by Western blot (WB), but was more intense in the membrane fraction that was used for further antigen characterization experiments.

Figure 1 Detection of the patients with phosphodiesterase 10A autoantibody



Indirect immunofluorescence assay performed on murine tissue with patient serum demonstrates synaptic staining of the basal ganglia (A), more prominent than the hippocampus (B) and to a lesser extent the granular layer of the cerebellum (C). (D) Western blot probing of lysed membrane fraction of pig basal ganglia with serum immunoglobulin G (IgG) of 3 patients identified an immunoreactive band ~75 kDa and another >200 kDa that were not seen with normal control serum IgG. Elution of patient 1's IgG from the corresponding 75 kDa excised nitrocellulose band reproduced the original tissue staining pattern when applied to mouse brain as the patient's serum (E), while an IgG elution from a control band (~150 kDa) did not (not shown). (F) T2 fluid-attenuated inversion recovery MRI of patient 4 with bilateral basal ganglia hyperintensities. GL = granular layer; GP = globus pallidus; Hi = hippocampus; ML = molecular layer; SN = substantia nigra; Str = striatum.

Antibody purification and protein characterization

Patients' IgG was purified using protein G bound to magnetic beads (Dynabeads; Invitrogen) and incubated with pig basal ganglia membrane extraction. IgG and bound protein were eluted and dissociated by boiling in sodium dodecyl sulfate sample buffer and separated by gel electrophoresis. Silver staining and WB were used to identify the immunoreactive bands that were subsequently sequenced by mass spectrometry. To confirm that those immunoreactive bands contained the antigen yielding the tissue IFA pattern, we eluted the IgGs from excised nitrocellulose bands of corresponding molecular weight and tested eluates by tissue IFA.

Specific protein-target confirmation assays

Western blot

Commercially available recombinant human PDE10A protein (Abcam, ab198428; ≥48% purity, expected MW 116 kDa) was used for WB to confirm the patients' antibody immunoreactivity.

Absorption of patient serum IgGs with recombinant PDE10A

Three patients' sera and a control serum (positive for Purkinje-cell cytoplasmic antibody 1 [PCA1], also known as anti-Yo) were incubated overnight with either 2 µg of recombinant PDE10A or PBS and tested by IFA.

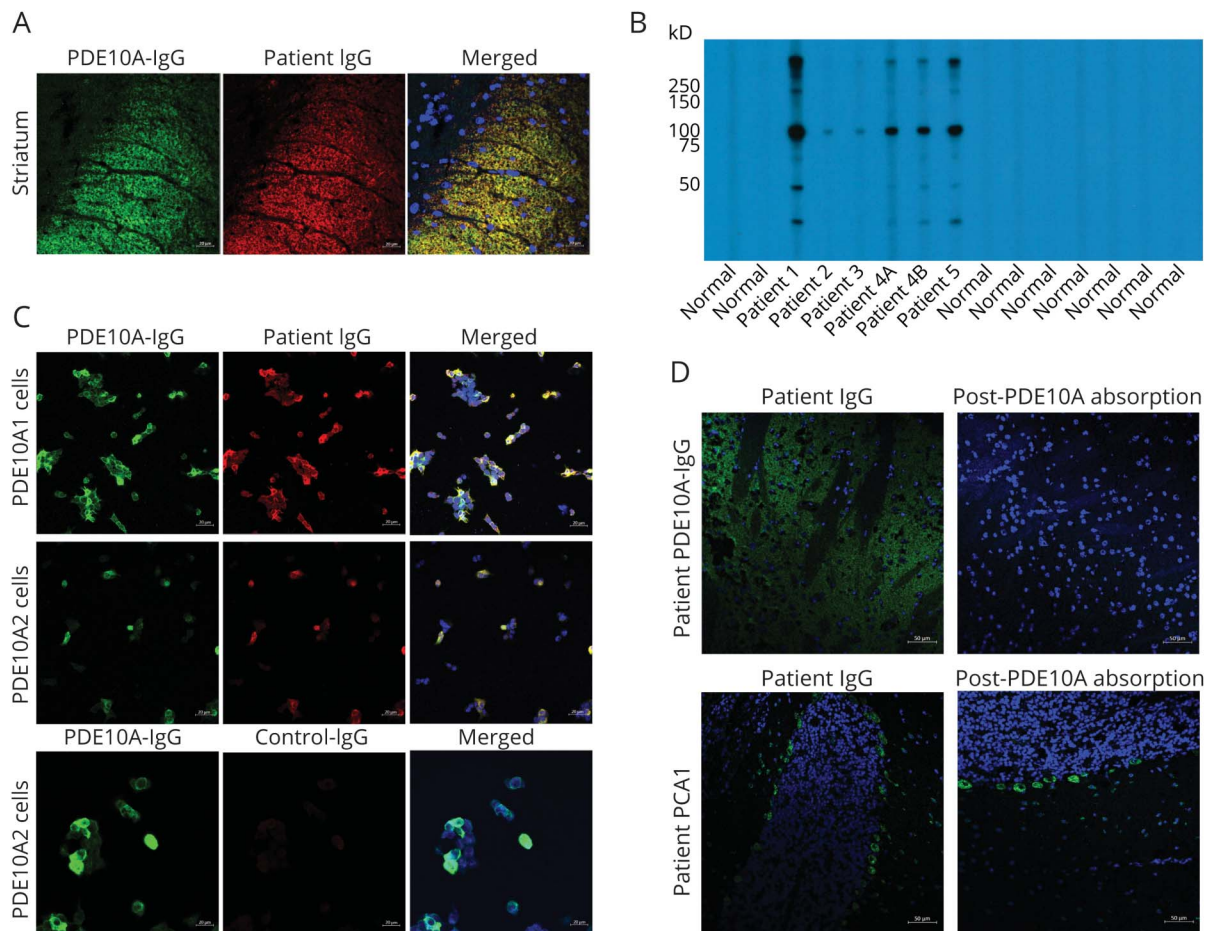
Cell-based immunofluorescence assays

HEK293 cells were transiently transfected with plasmids encoding either PDE10A1 or PDE10A2 isoforms (GenScript, reference sequence: NM_001130690.2 and NM_006661.3), fixed and tested by IFA. Patient sera and CSFs (1:200 and 1:5 dilutions, respectively) and PDE10A rabbit polyclonal commercial antibody (1:300 dilution) were applied and secondary antibodies used, as above. All patient and control specimens yielded the same results, regardless of the PDE10A isoform used.

Data availability

All methods are available above and data are published in this article.

Figure 2 Antigen characterization



(A) Rabbit phosphodiesterase 10A (PDE10A) immunoglobulin G (IgG) (green) colocalizes with patient serum IgG (red) by confocal indirect immunofluorescence imaging on murine basal ganglia (merged images; yellow). Nuclei are blue (DAPI stained). (B) Recombinant PDE10A Western blot (WB) of 5 patients (6 sera; patient 4 had sera from 2 timepoints) and normal controls. The 2 patients whose serum lacked 75 kDa reactivity in WB testing with pig basal ganglia extracts (figure 1D) were positive by recombinant WB but yielded a less intense signal than the other patients' sera. (C) Cell-based indirect immunofluorescence, commercial PDE10A IgG (green), patient's serum (red), and merged images (yellow); nuclear staining in blue (DAPI). (D) Immune absorption of PDE10A-IgG-positive patient's serum with 2 μ g of recombinant PDE10A protein eliminates the basal ganglia staining by indirect immunofluorescence while the control Purkinje-cell cytoplasmic antibody 1 (PCA1)-IgG-positive serum's staining in the perikarya of cerebellar Purkinje neurons is unchanged when absorbed with the same amount of recombinant PDE10A protein.

Results

Antigen characterization

All patients' specimens yielded the same synaptic immunofluorescence pattern of IgG binding, with prominent staining of the basal ganglia and related nuclei, to a lesser extent the hippocampus, and faint staining of the cerebellar granular layer (figure 1, A–C). None of the >400,000 clinical samples tested in the same period had similar staining.

WB of patients' sera using pig basal ganglia extracts revealed a common band (approximate MW 75 kDa) in 3 patients (figure 1D). IgG eluted from the nitrocellulose-corresponding band demonstrated the same staining pattern by tissue IFA as the patients' serum (figure 1E), but not IgG eluted from a control band (~150 kDa). Eluates derived from immunoprecipitation experiments using purified IgG (patients 1 and 4 and one healthy control) were treated by in-gel digestion and

proteins were identified by mass spectrometry. The majority of peptides identified from the excised gel bands of the 2 patients but not of the control corresponded to fragments of PDE10A (MW in pig: 79 kDa), including from a second common band above 200 kDa.

Confirmation of PDE10A as autoantigen

PDE10A was confirmed as the pertinent antigen (figure 2, A–D). First, there was colocalization on murine brain IFA of all patients' specimens with the PDE10A-specific antibody by confocal microscopy. Second, IgG in patients' sera bound to recombinant PDE10A in WB testing, while normal controls were negative. Third, preabsorption of serum from patients 3, 4, and 5 (but not from a patient harboring PCA1) with recombinant PDE10A protein eliminated the specific IFA staining. Finally, all specimens were positive by indirect immunofluorescence on PDE10A-transfected HEK cell-based assays (CBA), both with PDE10A1 and PDE10A2 isoforms.

All controls were negative except for 1 patient with renal adenocarcinoma and aquaporin-4-IgG-seropositive neuromyelitis optica that had faint reactivity on PDE10A-transfected cells by CBA but was negative for the characteristic tissue IFA staining and recombinant PDE10A WB.

Clinical characteristics

The patients' clinical characteristics are summarized in the table. The patients' median age was 70 years (range 66–76 years); 4 were male (57%). Neurologic information was available in 6 cases, although limited in 4. Three patients had hyperkinetic movements (chorea, generalized dystonia and choreiform movements, right hemiballismus). One additional patient had parkinsonism. Four patients had encephalopathy, 2 of whom had meningeal carcinomatosis.

All patients had confirmed carcinomas, except for patient 2, in whom a lung nodule was radiologically detected. Carcinomas

encountered were pulmonary non-small cell type (1 adenocarcinoma, 1 squamous cell, 1 poorly differentiated mesenchymal), 2 metastatic renal cell, and 1 pancreatic.

Two patients developed neurologic symptoms a median of 4.5 months (range 4–5) after initiation of ICI therapy targeting PD-1 for adenocarcinoma of kidney and lung. Both patients had hyperkinetic movement disorders and basal ganglia fluid-attenuated inversion recovery (FLAIR)/T2 hyperintensities (nonenhancing) on MRI that recapitulated the appearance of patient IgG staining observed on mouse brain by IFA (figure 1F). This MRI finding was not reported in other patients with imaging data, but the imaging were not available for review by the authors. Both patients had CSF-restricted oligoclonal bands.

Only these 2 patients received immunotherapy. Patient 4 improved after a course of IV methylprednisolone and pembrolizumab cessation (video), but the benefit eventually

Table Patients with confirmed phosphodiesterase 10A (PDE10A) autoimmunity

	Main neurologic symptoms	Cancer	Cancer treatment	PDE10A IgG	CSF	MRI	Treatment/outcome
1/ M/ 71 ^a	Not available	Right lung; poorly differentiated mesenchymal neoplasm	NA	Serum titer: >1:30,720 (CSF NA)	NA	Age-appropriate changes reported	Death (no data available)
2/ M/ 75 ^a	Chorea and encephalopathy	Lung nodule; no follow-up	NA	Serum titer: 1:15,360 (CSF NA)	NA	NA	NA
3/ F/ 69 ^a	Encephalopathy (confusion) and dysarthria	Squamous cell lung cancer; remote history of large meningioma radiated	NA	Serum titer: 1:30,720 (CSF NA)	NA	NA	Death (no data available)
4/ F/ 76	Generalized hyperkinetic movement disorder (chorea, dyskinesia), dysarthria, and dysphagia	Metastatic renal cell carcinoma (vena cava, brain, liver)	5 months after onset of pembrolizumab treatment	Serum titer: >1:30,720 and CSF titer NA	WBCs ≤5, Pro, 44 mg/dL, 8 OCBs	FLAIR/T2 BG hyperintensities	Pembrolizumab cessation; IVMP → improvement of the movement disorder; not sustained, no response to PLEX or oral steroids; cancer remission for 3 years
5/ F/ 66	Right hemiballismus and dysarthria	Lung adenocarcinoma	4 months after onset of nivolumab treatment	Serum titer >30,720 and CSF titer: 1:4	WBCs ≤5, Pro, 56 mg/dL, 14 OCBs	FLAIR/T2 BG hyperintensities	Nivolumab cessation; IVMP, PLEX, IVIg, RTX → no improvement; death soon after from neurologic deterioration
6/ M/ 70 ^a	Parkinsonism, encephalopathy (confusion)	Metastatic renal cell carcinoma with probable leptomeningeal carcinomatosis	NA	Serum and CSF; titers NA	NA	Leptomeningeal enhancement	Death (no data available)
7/ M/ 69 ^a	Subacute ataxia, encephalopathy (hearing loss, headache, and confusion)	Metastatic pancreatic adenocarcinoma (liver, lung, and probable meningeal carcinomatosis)	NA	CSF titer: 1:64 (serum NA)	NA	Leptomeningeal enhancement	Death from cancer complications (no data available)

Abbreviations: BG = basal ganglia; FLAIR = fluid-attenuated inversion recovery; IgG = immunoglobulin G; IVIg = IV immunoglobulin; IVMP = IV methylprednisolone; NA = not available; OCB = oligoclonal band; PLEX = plasma exchange; pro = protein; RTX = rituximab; WBC = white blood cell.

Normal values for CSF: pro, ≤35 mg/dL; OCBs, <4; WBC, ≤5/μL.

^a Patients with limited clinical information.

subsided; sustained improvement occurred after tetrabenazine and craniocervical botulinum toxin injections. The patient was alive 3 years after diagnosis of a plurimetastatic renal cell adenocarcinoma. Patient 5, who developed hemiballismus while on ICI for lung adenocarcinoma, had no response to any immunotherapy. She died of neurologic complications soon after onset of her symptoms (table).

Of the remaining patients, 4 died shortly after neurologic symptom onset (patients 1, 3, 6, and 7) or was lost to follow-up (patient 2).

Immunohistochemical testing of renal tissues for PDE10A

PDE10A-specific IgG produced diffuse staining of patient 4's renal adenocarcinoma (figure 3, C–F), while normal kidney tissue showed PDE10A expression restricted to tubular epithelium (figure 3, A and B).

Discussion

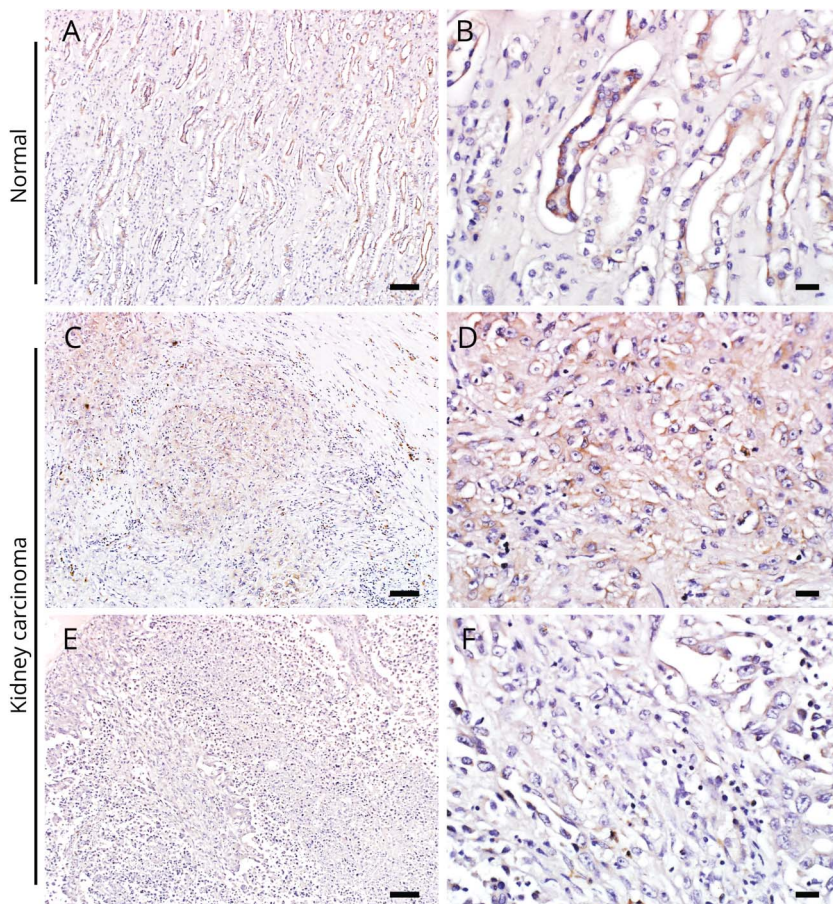
We report PDE10A-specific IgG as a biomarker of paraneoplastic neurologic autoimmunity with most prominent clinical

phenotype of movement disorders with or without coexisting encephalopathy. The clinical phenotype might be broader than what we describe because the clinical data available were limited. A carcinoma was diagnosed in all but one patient. ICI targeting PD-1 were implicated as the trigger of neurologic symptoms in 2 patients, one of whom responded favorably to corticosteroid therapy initially. Paralleling the clinical phenotype, PDE10A IgG staining of mouse brain was most prominent in the basal ganglia and hippocampus. In addition, MRI of 2 patients with hyperkinetic movement disorders revealed basal ganglial FLAIR/T2 hyperintensities.

A similar phenotype (generalized hyperkinetic movement disorder and bilateral striatal lesions on MRI) in children with PDE10A mutations parallels this autoimmune phenotype.^{13,14} PET studies showed that PDE10A expression is altered early in another choreiform disorder, Huntington disease, and in presymptomatic carriers.^{15,16} None of the patients with Huntington disease we tested had PDE10A IgGs.

The enzyme PDE10A, a dual-substrate cyclic nucleotide phosphodiesterase that hydrolyzes adenosine and guanosine 3',5'-cyclic monophosphates, is enriched in striatal medium

Figure 3 Immunohistochemistry of renal cell carcinoma (patient 4)



(A, B) Phosphodiesterase 10A (PDE10A) immunohistochemistry in normal control human kidney tissue. The high power image (B) indicates the collecting tubular epithelium with marked expression of PDE10A. The kidney carcinoma tissue of patient 4 shows foci of variable PDE10A immunoreactivity: moderate expression (C, D) or scant PDE10A expression (E, F) in different parts of the tumor. Scale bars in A, C, and E = 100 μ m. Scale bars in B, D, and F = 20 μ m.

spiny neurons.^{17,18} It is an intracellular protein, mostly membrane-bound (PDE10A1 isoform), but also free in the cytoplasm (PDE10A2), consistent with our patients' IgGs binding to both membrane and cytoplasmic fractions of pig basal ganglia extracts.¹⁹ Our patient specimens were immunoreactive with both PDE10A isoforms.

The intracellular location of PDE10A suggests that patients' IgG, unlike NMDA receptor IgG, lacks potential for neural-specific pathogenicity, but rather is a surrogate marker of cytotoxic T cells specific for PDE10A-derived peptides.^{2,20,21} The foci of PDE10A immunoreactivity in the renal cell adenocarcinoma of patient 4 supports a peripheral carcinoma being the initial immunogenic trigger for an autoimmune response.^{22,23} A single control patient with renal cell adenocarcinoma had low PDE10A-IgG seropositivity by CBA alone, suggesting a possible onconeural antigen-specific antitumor immune response without the corresponding neurologic phenotype.^{3,24} Neither this patient's renal cell carcinoma nor control renal cell carcinomas were tested for PDE10A expression in this study, but mRNA data suggest that PDE10A can be expressed in kidney tumors (proteinatlas.org). The immunologic trigger for bypassing self-tolerance and development of antigen-specific autoimmunity remains unknown but expression of neoantigens by the tumors has been implicated.^{22,23,25}

It was remarkable that 2 of our 7 patients harboring PDE10A IgG received ICI treatment before the onset of an autoimmune hyperkinetic disorder. Sera of control patients with different types of cancer with and without neurologic disease that were treated with ICI were all negative for PDE10A IgG. Thus, at this early stage, we do not know if patients treated with immune checkpoint inhibitors are at higher risk for this specific autoimmune hyperkinetic movement disorder or not.

Cancers that heretofore rarely associated with paraneoplastic neurologic autoimmunity are encountered increasingly in contemporary practice after introduction of ICI; for example, renal cell adenocarcinomas, well-known for triggering metabolic endocrine paraneoplastic syndromes rarely associated with neurologic autoimmunity.²⁶ Neurologic autoimmunity in these cases is probably facilitated by the potentiation of the antitumor immune response by the ICIs, as seen in other well-established autoimmune diseases that develop after ICI treatments; the autoimmune complications do not appear to be drug-specific but likely related to the immunologic background of the patient and neoplasm type.²⁷

PDE10A autoimmunity, although rare, expands the spectrum of diagnosable autoimmune movement disorders, may be severe, and should be suspected in patients with movement disorders, especially if treated with cancer immunotherapy. Early diagnosis and treatment with appropriate immunotherapy may prevent further neurologic deterioration, though our initial data seem to portend a poor prognosis.

Acknowledgment

The authors thank James Fryer, Jade Zbacnik, and James Checkel for technical assistance and Avi Gadoth, MD, and Sebastian Alfonso Lopez-Chiriboga, MD, for gathering part of the clinical information.

Study funding

No targeted funding reported.

Disclosure

A. Zekeridou has a pending patent application pertaining to PDE10A-IgG autoimmunity. T. Kryzer receives royalties from licensing of aquaporin-4 IgG as diagnostic aid. Y. Guo and A. Hassan report no disclosures relevant to the manuscript. V.A. Lennon receives royalties for technology relating to aquaporin-4 (AQP4) antibodies for diagnosis of neuromyelitis optica (NMO) and its spectrum disorders and is a named inventor on filed patents that relate to functional AQP4/NMO-IgG assays and NMO-IgG as a cancer marker. C.F. Lucchinetti reports no disclosures relevant to the manuscript. S.J. Pittock has a financial interest in technology associated with "Aquaporin-4 autoantibody as a cancer marker," "Aquaporin-4 binding autoantibodies in patients with neuromyelitis optica impair glutamate transport by down-regulating EAAT2," and "MAP1B as a paraneoplastic biomarker." Dr. Pittock receives research support from Alexion, Medimmune, and Grifols. Dr. Pittock has provided consultation to Alexion Pharmaceutical, MedImmune LLC, and Chugai Pharma, but has received no personal fees or compensation for these consulting activities. All compensation for consulting activities is paid directly to Mayo Clinic. A. McKeon has a pending patent application pertaining to PDE10A IgG autoimmunity. Go to Neurology.org/N for full disclosures.

Publication history

Received by *Neurology* November 23, 2018. Accepted in final form May 1, 2019.

Appendix Authors

Name	Location	Role	Contribution
Anastasia Zekeridou, MD	Mayo Clinic, Rochester, MN	Author	Design and conceptualization of the study, major role in acquisition and analysis and interpretation of the data, drafted the manuscript for intellectual content
Thomas Kryzer, AS	Mayo Clinic, Rochester, MN	Author	Interpretation of the data, revising the manuscript for intellectual content
Yong Guo, MD	Mayo Clinic, Rochester, MN	Author	Major role in the acquisition and analysis and interpretation of data, revising the manuscript for intellectual content

Continued

Appendix (continued)

Name	Location	Role	Contribution
Anhar Hassan, MD	Mayo Clinic, Rochester, MN	Author	Major role in the acquisition of data, revising the manuscript for intellectual content
Vanda Lennon, MD, PhD	Mayo Clinic, Rochester, MN	Author	Interpretation of the data, revising the manuscript for intellectual content
Claudia F. Lucchinetti, MD	Mayo Clinic, Rochester, MN	Author	Interpretation of the data, revising the manuscript for intellectual content
Sean Pittock, MD	Mayo Clinic, Rochester, MN	Author	Interpretation of the data, revising the manuscript for intellectual content
Andrew McKeon, MD	Mayo Clinic, Rochester, MN	Author	Design and conceptualization of the study, major role in acquisition and analysis and interpretation of data, revised the manuscript for intellectual content

References

- McKeon A, Pittock SJ. Paraneoplastic encephalomyelopathies: pathology and mechanisms. *Acta Neuropathol* 2011;122:381–400.
- Lancaster E, Dalmau J. Neuronal autoantigens: pathogenesis, associated disorders and antibody testing. *Nat Rev Neurol* 2012;8:380–390.
- Zekeridou A, McKeon A, Lennon VA. Frequency of synaptic autoantibody accompaniments and neurological manifestations of thymoma. *JAMA Neurol* 2016;73:853–859.
- Gozzard P, Woodhall M, Chapman C, et al. Paraneoplastic neurologic disorders in small cell lung carcinoma: a prospective study. *Neurology* 2015;85:235–239.
- Hottinger AF. Neurologic complications of immune checkpoint inhibitors. *Curr Opin Neurol* 2016;29:806–812.
- Kao JC, Liao B, Markovic SN, et al. Neurological complications associated with anti-programmed death 1 (PD-1) antibodies. *JAMA Neurol* 2017;74:1216–1222.
- Touat M, Talmasov D, Ricard D, Psimaras D. Neurological toxicities associated with immune-checkpoint inhibitors. *Curr Opin Neurol* 2017;30:659–668.
- Honorat JA, McKeon A. Autoimmune movement disorders: a clinical and laboratory approach. *Curr Neurol Neurosci Rep* 2017;17:4.
- Damato V, Balint B, Kienzler AK, Irani SR. The clinical features, underlying immunology, and treatment of autoantibody-mediated movement disorders. *Mov Disord* 2018;33:1376–1389.
- Balint B, Vincent A, Meinck HM, Irani SR, Bhatia KP. Movement disorders with neuronal antibodies: syndromic approach, genetic parallels and pathophysiology. *Brain* 2018;141:13–36.
- Vernino S, Tuite P, Adler CH, et al. Paraneoplastic chorea associated with CRMP-5 neuronal antibody and lung carcinoma. *Ann Neurol* 2002;51:625–630.
- Basal E, Zalewski N, Kryzer TJ, et al. Paraneoplastic neuronal intermediate filament autoimmunity. *Neurology* 2018;91:e1677–e1689.
- Diggle CP, Sukoff Rizzo SJ, Popielek M, et al. Biallelic mutations in PDE10A lead to loss of striatal PDE10A and a hyperkinetic movement disorder with onset in infancy. *Am J Hum Genet* 2016;98:735–743.
- Miyatake S, Koshimizu E, Shirai I, et al. A familial case of PDE10A-associated childhood-onset chorea with bilateral striatal lesions. *Mov Disord* 2018;33:177–179.
- Niccolini F, Haider S, Reis Marques T, et al. Altered PDE10A expression detectable early before symptomatic onset in Huntington's disease. *Brain* 2015;138:3016–3029.
- Wilson H, De Micco R, Niccolini F, Politis M. Molecular imaging markers to track Huntington's disease pathology. *Front Neurol* 2017;8:11.
- Fujishige K, Kotera J, Michibata H, Yuasa S, Okumura K, Omori K. Cloning and characterization of a novel human phosphodiesterase that hydrolyzes both cAMP and cGMP (PDE10A). *J Biol Chem* 1999;274:18438–18445.
- Loughney K, Snyder PB, Uher L, Rosman GJ, Ferguson K, Florio VA. Isolation and characterization of PDE10A, a novel human 3', 5'-cyclic nucleotide phosphodiesterase. *Gene* 1999;234:109–117.
- Xie Z, Adamowicz WO, Eldred WD, et al. Cellular and subcellular localization of PDE10A, a striatum-enriched phosphodiesterase. *Neuroscience* 2006;139:597–607.
- Dalmau J, Geis C, Graus F. Autoantibodies to synaptic receptors and neuronal cell surface proteins in autoimmune diseases of the central nervous system. *Physiol Rev* 2017;97:839–887.
- Crisp SJ, Kullmann DM, Vincent A. Autoimmune synaptopathies. *Nat Rev Neurosci* 2016;17:103–117.
- Zekeridou A, Griesmann GE, Lennon VA. Mutated cancer autoantigen implicated cause of paraneoplastic myasthenia gravis. *Muscle Nerve* 2018;58:600–604.
- Small M, Treilleux I, Coullault C, et al. Genetic alterations and tumor immune attack in Yo paraneoplastic cerebellar degeneration. *Acta Neuropathol* 2018;135:569–579.
- Gozzard P, Chapman C, Vincent A, Lang B, Maddison P. Novel humoral prognostic markers in small-cell lung carcinoma: a prospective study. *PLoS ONE* 2015;10:e0143558.
- Joseph CG, Darrah E, Shah AA, et al. Association of the autoimmune disease scleroderma with an immunologic response to cancer. *Science* 2014;343:152–157.
- Palapattu GS, Kristo B, Rajfer J. Paraneoplastic syndromes in urologic malignancy: the many faces of renal cell carcinoma. *Rev Urol* 2002;4:163–170.
- Mammen AL, Rajan A, Pak K, et al. Pre-existing antiacetylcholine receptor autoantibodies and B cell lymphopenia are associated with the development of myositis in patients with thymoma treated with avelumab, an immune checkpoint inhibitor targeting programmed death-ligand 1. *Ann Rheum Dis* 2019;78:150–152.