

ORIGINAL ARTICLE

Protection against diabetic cardiomyopathy is achieved using a combination of sulforaphane and zinc in type 1 diabetic OVE26 mice

Jiqun Wang^{1,2} | Shudong Wang¹ | Wanning Wang^{2,3} | Jing Chen⁴ | Zhiguo Zhang¹ | Qi Zheng⁵ | Quan Liu¹ | Lu Cai^{2,6} 

¹The Center of Cardiovascular Diseases, The First Hospital of Jilin University, Changchun, China

²Pediatric Research Institute, Department of Pediatrics, University of Louisville, Louisville, Kentucky, USA

³Department of Nephrology, The First Hospital of Jilin University, Changchun, China

⁴Department of Otolaryngology, Stanford University, Palo Alto, California, USA

⁵Department of Bioinformatics and Biostatistics, University of Louisville, Louisville, Kentucky, USA

⁶Departments of Radiation Oncology, Pharmacology and Toxicology, University of Louisville, Louisville, Kentucky, USA

Correspondence

Quan Liu, The Center of Cardiovascular Diseases, The First Hospital of Jilin University, 71 Xinmin Street, Changchun, 130021, China.
Email: quanliu888@163.com

Lu Cai, Pediatrics, Radiation Oncology and Pharmacology and Toxicology, The University of Louisville, 570 S. Preston Street, Louisville, 40202, USA.
Email: LCcai001@louisville.edu

Funding information

American Diabetes Association, Grant/Award Number: 1-18-IBS-082; National Natural Science Foundation of China, Grant/Award Number: 81570338 and 8167020110

Abstract

Sulforaphane (SFN) can effectively induce nuclear factor E2-related factor 2 (Nrf2), and zinc (Zn) can effectively induce metallothionein (MT), both of which have been shown to protect against diabetic cardiomyopathy (DCM). However, it is unclear whether combined treatment with SFN and Zn offers better cardiac protection than either one alone. Here, we treated 5-week-old OVE mice that spontaneously develop type 1 diabetes with SFN and/or Zn for 18 weeks. Cardiac dysfunction, by echocardiography, and pathological alterations and remodelling, shown by cardiac hypertrophy, fibrosis, inflammation and oxidative damage, examined by histopathology, Western blotting and real-time PCR, were observed in OVE mice. All these dysfunction and pathological abnormalities seen in OVE mice were attenuated in OVE mice with treatment of either SFN, Zn or SFN/Zn, and the combined treatment with SFN/Zn was better than single treatments at ameliorating DCM. In addition, combined SFN and Zn treatment increased Nrf2 function and MT expression in the heart of OVE mice to a greater extent than SFN or Zn alone. This indicates that the dual activation of Nrf2 and MT by combined treatment with SFN and Zn may be more effective than monotherapy at preventing the development of DCM via complementary, additive mechanisms.

KEYWORDS

cardiomyopathy, diabetes, metallothionein, nuclear factor E2, related factor 2, sulforaphane, zinc

1 | INTRODUCTION

Diabetes is one of the most common chronic diseases and is characterized by high blood glucose concentrations. The prevalence of

diabetes and number of patients have continued to increase in recent years. In 2017, it was estimated that 425 million people aged 20-79 years are living with diabetes, and the number of people with diabetes in this age group was predicted to rise to 629 million,

This is an open access article under the terms of the Creative Commons Attribution License, which permits use, distribution and reproduction in any medium, provided the original work is properly cited.

© 2019 The Authors. Journal of Cellular and Molecular Medicine published by John Wiley & Sons Ltd and Foundation for Cellular and Molecular Medicine.

representing 9.9% of the population, by 2045.¹ 5%–10% of global diabetes patients are type 1 diabetes (T1D),² which is a multifactorial disease with a strong genetic component, caused by the autoimmune destruction of pancreatic β cells, culminating in absolute insulin deficiency.^{3,4} Prevalence of T1D disease is increasing worldwide.^{2,5,6} Generally, longitudinal or cross-sectional studies are often locally or regionally performed. Consequently, it is difficult to access generalizable results because the epidemiology of T1D is known to be heterogeneous regarding geography and ethnicity.² Diabetic complications seriously affect human health and continue to be a major cause of morbidity and mortality in persons with T1D.^{7,8} Cardiovascular disease events not only are more common in individuals with T1D as compared to those without diabetes, but also occur earlier.⁹ Diabetic cardiomyopathy (DCM) is the main cause of heart failure in diabetic patients and one of the most lethal complications.^{10,11} DCM was originally reported by Rubler et al¹² and is characterized by ventricular contractile dysfunction, cardiac hypertrophy, interstitial collagen accumulation and fibrosis.^{13–16} The concept of DCM is often considered in patients who are specifically affected by type 2 diabetes (T2D); however, a cardiomyopathy, independent of hypertension, nephropathy or ischaemic heart disease induced by metabolism is also evident in patients with T1D.¹⁷ The mechanism of DCM is not fully understood, but oxidative stress is considered to be one of the most important pathophysiological factors.^{18–20} Therefore, treatments targeting oxidative stress may represent suitable strategies for the effective prevention of DCM.^{21,22}

Nuclear factor E2-related factor 2 (Nrf2), a transcription factor with high sensitivity to oxidative stress, binds to antioxidant response elements (AREs) in the nucleus and promotes the transcription of a wide variety of antioxidant genes. Nrf2 is located in the cytoskeleton, bound to Kelch-like ECH-associated protein 1 (Keap1).²³ Oxidative stress causes Nrf2 to dissociate from Keap1 and to subsequently translocate into the nucleus, which results in its binding to AREs and the transcription of downstream target genes, including genes that encode antioxidants, detoxifying enzymes, antiapoptotic proteins and proteasomes,^{24–26} stress and prevent DCM.^{27–31}

Metallothionein (MT) is a cysteine-rich protein that can bind heavy metal ions such as copper and zinc (Zn).³² It is also a potent scavenger of free radicals because of its high thiol content.³³ Therefore, as another effective antioxidant, MT may also be effective in protecting against DCM.^{26,34–37}

Sulforaphane (SFN) is an isothiocyanate and is stored as its relatively stable precursor glucoraphanin (GRN) in a variety of cruciferous plants, with particularly high levels detected in broccoli and broccoli sprouts.^{38–40} When the plant is consumed, plant myrosinases or microbial hydrolases present in gut bacteria convert GRN to SFN.⁴¹ SFN can modify cysteine 151 in Keap1 to perturb the association of Cul3 ubiquitin ligase with Keap1, allowing Nrf2 to escape degradation by the proteasome. Thus, Nrf2 is stabilized and translocates into the nucleus to induce the transcription of its target genes.³⁹ Many studies have shown that SFN has antioxidant, apoptosis-inducing and anti-inflammatory effects in diabetes, cardiovascular, neurologic and other diseases.^{42–44} Our previous studies have

shown that MT is downstream of Nrf2^{45,46} and regulates the expression of Nrf2 as well.⁴⁷ We also found that Zn stimulates Nrf2 expression and transcription via activation of Akt-dependent inhibition of Fyn nuclear translocation.⁴⁸ Considering that SFN and Zn protective effects against diabetes-induced organ damage rely on the activation of different molecular targets (Nrf2 and MT, respectively),^{49–51} and two pathways can interact with each other, we suggested that the combined treatment with SFN and Zn might provide better protection against diabetes-induced complications than either treatment alone. However, published research has not determined whether this combination is more effective at relieving oxidative stress and preventing the development of DCM than either substance alone. Therefore, in this study, we used a genetic mouse model of T1D, the OVE26 mouse, to compare the effects of treatment with SFN, Zn or a combination of the two. The OVE26 mouse model has often been used to study of diabetes-induced complications.^{26,52} This is because OVE26 mice develop T1D within 24 hours after birth because of beta cell-specific damage due to a calmodulin transgene regulated by the insulin promoter,⁵³ and develop well-characterized cardiac and renal complications. Additionally, this model avoids the potential systemic toxicity of streptozotocin, which is used to induce T1D in other animal models.^{54–56}

2 | MATERIALS AND METHODS

2.1 | Animals

All animal procedures followed the NIH Guide for the Care and Use of Laboratory Animals and were approved by the University of Louisville Institutional Animal Care and Use Committee (IACUC) guidelines. Transgenic female OVE26 and FVB (wild-type control) mice were maintained in a 12-hour light/dark cycle at 25°C and given free access to water and food (10 kcal% fat with 30 mg Zn per 4057 kcal). OVE26 mice develop severe T1D within 24 hours of birth.⁵³ We used female mice because cardiovascular disease is less likely in women owing to the protective effect of oestrogen. However, in the Framingham study, female patients with diabetes had a significantly higher risk of heart failure⁵⁷; therefore, novel therapeutic approaches to diabetic complications developed in female models are likely to have greater clinical relevance.

2.2 | In vivo administration of SFN and Zn

Mice were administered SFN (0.5 mg/kg; Sigma-Aldrich) and/or zinc sulphate (5 mg/kg) by gavage from 5 weeks of age on 5 days per week for 18 weeks. The doses of SFN and Zn used were based on previous studies.^{37,58} Vehicle control mice were administered an equivalent volume of phosphate-buffered saline (PBS) containing 1% dimethyl sulphoxide. According to the conversion of animal doses to human equivalent doses based on body surface area guided by FDA,⁵⁹ 5 mg/kg of Zn in mouse is only equivalent to 0.405 mg/kg in human being. This does not even exceed the upper limit of DRIs in a 90 kg human being. Similarly, 0.5 mg/kg of SFN in mouse is

converted to human dose which is 0.0405 mg/kg. 300 g of broccoli contains about 2.63 mg of SFN,⁶⁰ which may be higher after cooking for a short time.⁶¹ Therefore, the doses of Zn and SFN used in the present study are relatively low and safe. In addition, in many clinical studies, SFN and Zn were used to treat chronic diseases, and the doses of SFN and Zn were often higher than the doses used in the present study.⁶²⁻⁶⁷ In our study, considering the intestinal malabsorption of OVE26 diabetic mice so that the absorption of Zn from normal diet may be reduced, we supplemented a little Zn besides diet, which is a nutritional treatment.

2.3 | Echocardiography

To assess cardiac function, transthoracic echocardiography was performed on mice using a high-resolution imaging system (Vevo 770; VisualSonics), as described previously.⁶⁸ Briefly, mice were anaesthetized with isoflurane and placed in a supine position on a heating pad. Two-dimensional and M-mode echocardiography was used to assess wall motion, chamber dimensions and cardiac function.

2.4 | Sirius Red staining

After anaesthesia, mouse hearts were isolated and fixed in 10% buffered formalin, and then dehydrated in a graded alcohol series, cleared with xylene, embedded in paraffin and sectioned at 5 μ m thickness. Cardiac fibrosis was assessed following the staining of collagen fibres with 0.1% Sirius Red F3BA and 0.25% Fast Green FCF, as described previously.³⁴

Tissue containing collagen was stained red, and myocardial tissue was stained green. ImageJ (National Institutes of Health) analysis of red areas was used to estimate collagen content.

2.5 | Western blotting

Western blotting was performed as described previously.⁶⁹ Briefly, heart tissue was homogenized in lysis buffer and proteins were collected by centrifugation at 12 000 r/min for 15 minutes at 4°C. Lysate protein concentration was determined using a Bradford assay. Samples of total protein were diluted in loading buffer, heated at 98°C for 5 minutes and then subjected to electrophoresis on 8% or 10% SDS-PAGE gels. After electrophoresis, proteins were transferred to nitrocellulose membranes at 4°C, which were then rinsed briefly in Tris-buffered saline, blocked in blocking buffer containing 5% milk and 0.5% bovine serum albumin for 1 hour, and then washed three times with Tris-buffered saline containing 0.1% Tween-20 (TBST). The membranes were incubated with primary antibodies overnight at 4°C, washed with TBST and then incubated with a secondary horseradish peroxidase-conjugated antibody for 1 hour at room temperature. The antigen-antibody complexes were then visualized using an ECL Kit (Bio-Rad). MT expression was detected using a modified Western blotting protocol.³⁷

The primary antibodies used in the study were as follows: 3-nitrotyrosine (3-NT; 1:1000; Millipore), 4-hydroxynonenal (4-HNE; 1:2000; Alpha Diagnostic International), plasminogen activator inhibitor type 1 (PAI-1; 1:1000; BD Biosciences), haem oxygenase-1 (HO-1; 1:1000; Cell Signaling Technology), transforming growth factor beta (TGF- β ; 1:1000; Abcam), Nrf2 (1:1000; Abcam), fibronectin (1:1000; Abcam), collagen-1 (1:1000; Abcam), tumour necrosis factor- α (TNF- α ; 1:1000; Abcam), intercellular adhesion molecule-1 (ICAM-1; 1:1000; Santa Cruz Biotechnology), superoxide dismutase-2 (SOD-2; 1:5000; Santa Cruz Biotechnology), catalase (CAT; 1:5000; Santa Cruz Biotechnology), β -actin (1:8000; Santa Cruz Biotechnology), glyceraldehyde 3-phosphate dehydrogenase (GAPDH; 1:3000; Santa Cruz Biotechnology) and MT (1:1000; DakoCytomation).

Protein content was determined by measuring the grey value of the bands by Image Lab (Bio-Rad, Hercules).

2.6 | Quantitative real-time PCR

Total RNA was extracted using TRIzol reagent (Invitrogen). RNA concentration and purity were assessed using a NanoDrop ND-1000 spectrophotometer. First-strand complementary DNA (cDNA) was synthesized from total RNA according to the manufacturer's protocol (Promega). Reverse transcription was performed with a Mastercycler Gradient (Eppendorf) at 42°C for 50 minutes, followed by 95°C for 5 minutes, with 0.5 μ g total RNA in a final volume of 20 μ L (4 μ L of 25 mmol/L MgCl₂, 4 μ L AMV reverse transcriptase 5 \times buffer, 2 μ L dNTPs, 0.5 μ L RNase inhibitor, 1 μ L AMV reverse transcriptase, 1 μ L dT primer and nuclease-free water). Primers targeting fibronectin, TGF- β , MT1, CAT, SOD and GAPDH were purchased from Thermo Fisher. Quantitative PCR was performed in a 20 μ L volume (10 μ L TaqMan Universal PCR Master Mix, 1 μ L primers and 9 μ L cDNA) using the ABI 7300 Real-Time PCR system. Data are expressed as fold differences vs controls, using the $\Delta\Delta$ Ct method and GAPDH as a reference gene.

2.7 | Statistical analysis

Data are expressed as the mean and standard deviation (SD) for each outcome variable. *T* test was performed to identify statistically significant differences between the means of two groups. One-way analysis of variance (ANOVA) was performed, followed by the Tukey post hoc analysis to identify groups which are statistically significantly different. The normality assumption of *t* test and ANOVA was examined by the Shapiro-Wilk test, and the equality of variance was validated by Levene's test. If the normality assumption was violated, a log transformation was then applied. We are fully aware of the small sample size in our study. However, the effect sizes are considerably large in the comparisons. Thus, even with a small size, the *t* test or one-way ANOVA test has at least 80% power to detect a meaningful difference at a significance level at 0.05.⁷⁰ The statistical analysis and graph preparation were

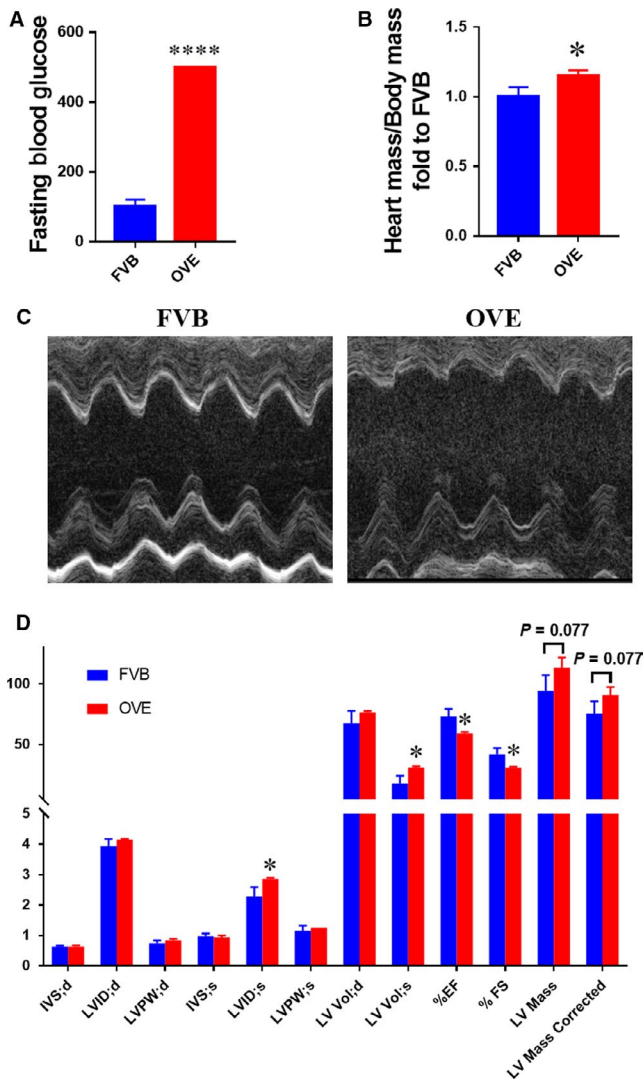


FIGURE 1 Cardiac structure and function in type 1 diabetic mice. OVE mice were used to establish a model of type 1 diabetes. A, Fasting blood glucose immediately prior to the killing. B, Heart mass-to-body mass ratio. C,D, Cardiac function, assessed using echocardiography. Data are presented as mean \pm SD ($n = 3$ or 4). * $P < 0.05$ vs control FVB mice; **** $P < 0.0001$ vs control FVB mice

undertaken using GraphPad Prism 7 (GraphPad Software Inc) and R (<https://www.r-project.org/>). Results were considered statistically significant when $P < 0.05$.

3 | RESULTS

3.1 | Characterization of DCM in T1D mice

Peripheral blood glucose concentration was measured in whole blood from a tail vein prior to the killing, and diabetes was defined by a blood glucose >250 mg/dL. The blood glucose concentrations in the OVE group all exceeded the upper limit of the blood glucose meter, confirming the presence of diabetes (Figure 1A). Compared with the FVB group, the fasting blood glucose and

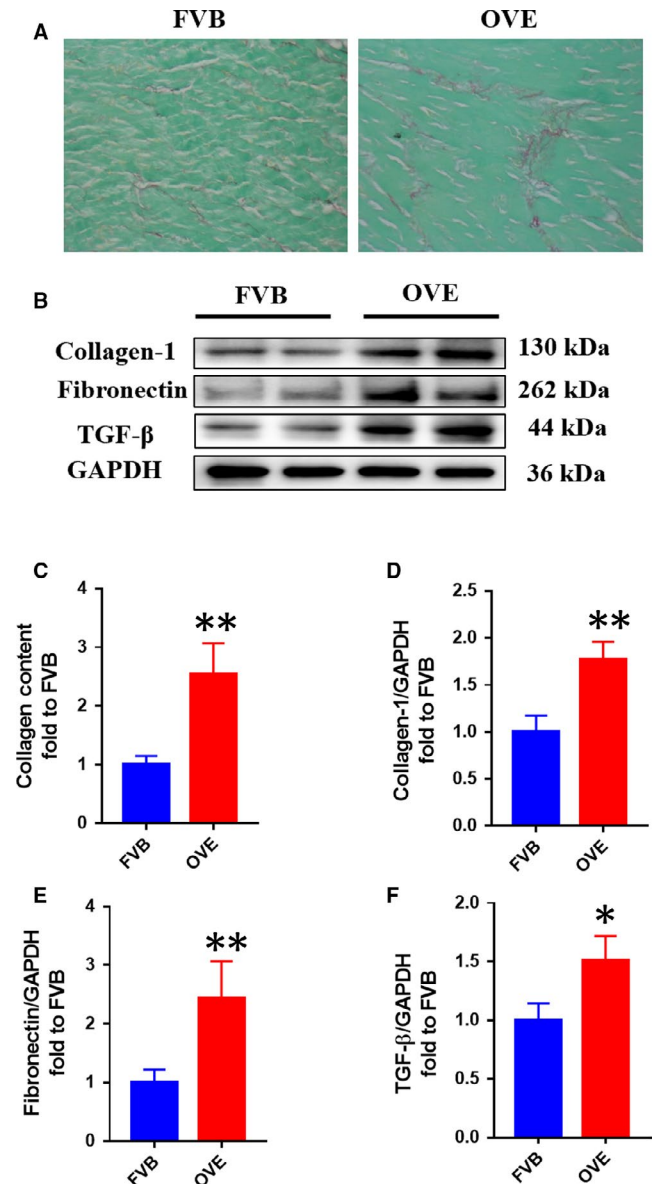
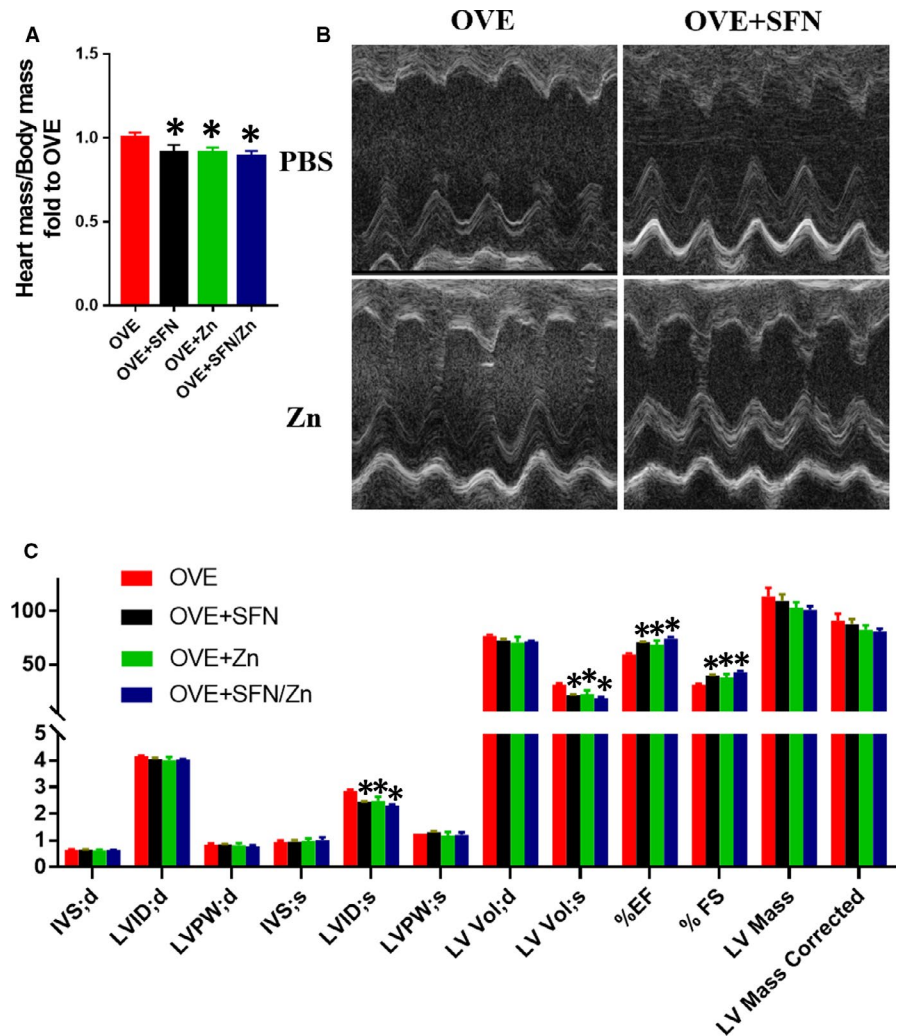


FIGURE 2 Cardiac fibrosis is significantly more severe in OVE mice than controls. A,C, Cardiac collagen deposition was assessed following Sirius Red staining. B,D-F, Cardiac fibrosis was also assessed by Western blotting for fibronectin, collagen-1 and growth factor beta. Data are presented as mean \pm SD ($n = 3$ or 4). * $P < 0.05$ vs control FVB mice; ** $P < 0.01$ vs control FVB mice

heart mass/body mass ratio of the OVE group were significantly higher (Figure 1B).

Echocardiography showed that, compared with the FVB group, the left ventricular internal systolic diameter (LVID:s) and left ventricular systolic volume (LV Vol:s) were significantly higher in the OVE group, while the ejection fraction (EF) and fractional shortening (FS) were significantly lower than in FVB mice (Figure 1C,D). This indicates that T1D is associated with changes in the cardiac structure and cardiac dysfunction in OVE mice. The LV mass in the OVE mice tended to be higher, which is consistent with the trend in heart mass/body mass ratio, and suggests the presence of cardiac hypertrophy.

FIGURE 3 Sulforaphane (SFN) and/or zinc (Zn) treatment ameliorates type 1 diabetes-associated defects in cardiac structure and function. Mice were administered SFN and/or Zn by gavage at doses of 0.5 and 5 mg/kg, respectively, 5 d a week for 18 wk, from 5 wk of age. Vehicle control mice were administered an equivalent volume of phosphate-buffered saline containing 1% dimethyl sulphoxide. A, Heart mass-to-body mass ratio. B,C, Cardiac function, assessed using echocardiography. Data are presented as mean \pm SD ($n = 3$ or 4). * $P < 0.05$ vs OVE mice



Using Sirius Red staining, we found that collagen deposition in the OVE group was significantly higher than in the FVB group (Figure 2A,C). Furthermore, the expression levels of fibronectin, collagen-1 and TGF- β in OVE mice were significantly higher by Western blotting (Figure 2B,D-F). These findings indicate that the cardiac changes in OVE mice are consistent with the changes present in DCM.

3.2 | Therapeutic effects of SFN and/or Zn in OVE mice

3.2.1 | General effects

The blood glucose concentrations of the treatment groups also all exceeded the maximum measurable value of the blood glucose meter; therefore, there were no statistical differences in fasting blood glucose between the OVE group and the treatment groups. This indicates that SFN and Zn treatments have no noticeable effect on fasting blood glucose, which is consistent with previous studies.^{46,71} Therefore, their cardioprotective effects are not achieved by lowering blood glucose levels. However, the heart mass/body mass ratio was significantly lower in the SFN-treated group, the Zn-treated

group and the combined treatment group, with the combined treatment group showing a trend towards being even lower than in the other groups, although this difference did not reach statistical significance (Figure 3A).

3.2.2 | Cardiac structure and function

Compared with the OVE group, regardless of whether SFN, Zn or a combination was administered, LVID;s and LV Vol;s were significantly lower, while EF and FS were significantly higher than in controls. LV mass also tended to be lower in the treated groups, particularly in the combination treatment group (Figure 3B,C). Thus, the echocardiography data indicate that both monotherapy and the combination ameliorate T1D-induced defects in cardiac structure and function.

3.2.3 | Treatment with SFN and/or Zn ameliorates myocardial fibrosis

Fibrosis is another defect that is characteristic of DCM. Sirius Red staining showed that both the monotherapies and the combination

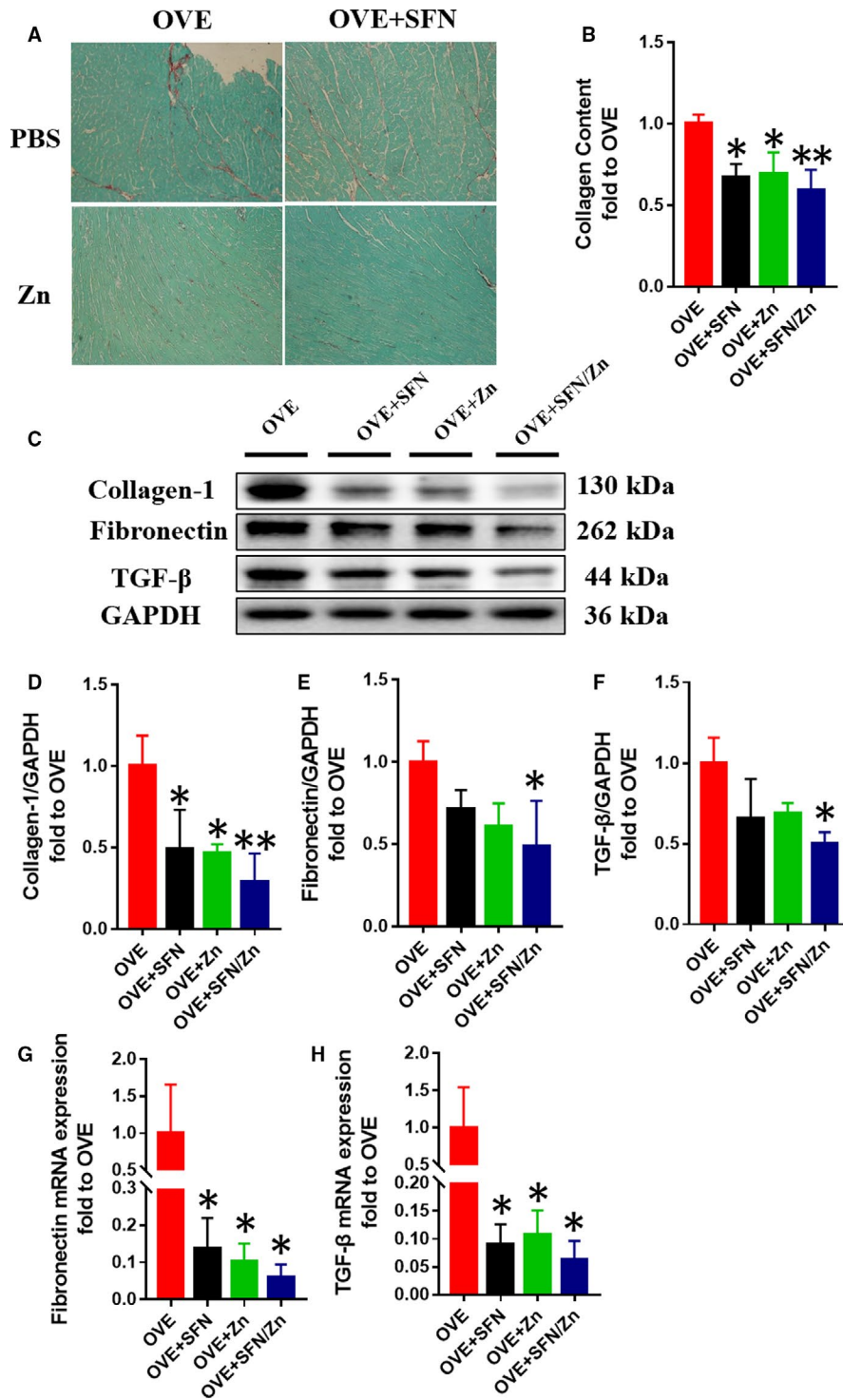


FIGURE 4 Sulforaphane and/or zinc treatment ameliorates cardiac fibrosis. A,B, Cardiac collagen deposition was assessed by Sirius Red staining. C-F, Cardiac fibrosis was assessed by Western blotting for collagen-1, fibronectin and transforming growth factor beta (TGF- β). G,H, The mRNA expression of fibronectin and TGF- β was measured by quantitative real-time PCR. Data are presented as mean \pm SD (n = 3 or 4). * P < 0.05 vs OVE mice; ** P < 0.01 vs OVE mice

treatment reduced myocardial collagen deposition in OVE mice, and the combined treatment group tended to have a greater effect, although this did not reach statistical significance (Figure 4A,B). Collagen-1 protein expression was similarly reduced (Figure 4C,D). Furthermore, real-time PCR analysis showed that all three treatments were able to ameliorate the T1D-induced increases in fibronectin and TGF- β mRNA levels, and the combined treatment group tended to have a larger effect (Figure 4G,H). Western

blotting showed that fibronectin and TGF- β protein levels tended to be lower in the monotherapy groups, but these differences did not reach statistical difference. However, the combination treatment did have a significant effect to reduce the expression of these proteins vs the OVE group (Figure 4C,E,F). These data demonstrate that treatment with SFN and/or Zn can ameliorate the ventricular remodelling, cardiac dysfunction and myocardial fibrosis associated with T1D.

3.3 | Potential mechanism by which SFN and/or Zn treatment prevents T1D-induced DCM in OVE mice

3.3.1 | Anti-inflammatory and anti-oxidative stress effects

The combined treatment significantly reduced the protein expression of ICAM-1, PAI-1 and TNF- α , while each monotherapy had weaker, non-significant effects on the expression of these proteins (Figure 5). This shows that the combination of SFN and Zn can significantly ameliorate the myocardial inflammation induced by T1D.

We used 3-NT and 4-HNE as indicators of the severity of oxidative stress. Similar to their effects on inflammatory markers, the monotherapies were able to reduce 3-NT and 4-HNE expression to varying degrees, but not significantly, whereas the combination treatment did significantly reduce the expression of these oxidative stress markers (Figure 6).

3.3.2 | Activation of Nrf2 and its downstream targets

Because Nrf2 and its downstream targets play an important anti-oxidant role, we measured total Nrf2 expression, which was slightly higher in both the SFN and Zn groups, and significantly higher in the combination treatment group (Figure 7A,B). However, because greater expression of Nrf2 does not necessarily imply greater activity, we evaluated its transcriptional activity by measuring mRNA expression of its downstream targets, the antioxidants SOD (Figure 7C) and CAT (Figure 7D). Numerous studies have shown that Nrf2 downstream targets, such as SOD and CAT, have significant antioxidant effects.⁷²⁻⁷⁵ The mRNA levels of both CAT and SOD in the SFN

and combination groups were significantly higher than those in the OVE group, and also slightly higher than those in the Zn group (Figure 7C,D). We also measured the expression of CAT and SOD, as well as HO-1, at the protein level. In the combination treatment group, the expression of CAT, SOD-2 and HO-1 was significantly higher than in the OVE group, but although expression also tended to be higher in the SFN- and Zn-treated groups, it was not significantly different (Figure 8). These results suggest that SFN is more effective than Zn at activating Nrf2, although Zn has an additive effect.

3.3.3 | Up-regulation of MT expression

Expression of MT was also measured in each group at both the protein (Figure 9A,B) and mRNA (Figure 9C) levels. In the combination treatment group, MT protein expression was significantly higher than in the OVE group and slightly higher than in both SFN and Zn groups. Specifically, the mRNA expression of MT was significantly higher in Zn-treated and SFN/Zn-treated OVE mice than in the OVE group. These findings suggest that MT gene and protein expression respond more to Zn treatment than SFN treatment.

4 | DISCUSSION

Previous studies have clearly shown that both Nrf2 and MT play important roles in the prevention of DCM.^{26,29,46} For the induction of Nrf2, most studies used SFN,^{58,76,77} whereas studies on the induction of MT used Zn.⁷⁸⁻⁸⁰ To date, no studies have evaluated the combination of SFN and Zn for the treatment of DCM. Here, for the first time, we have used these inducers of Nrf2 and MT in combination, and have shown

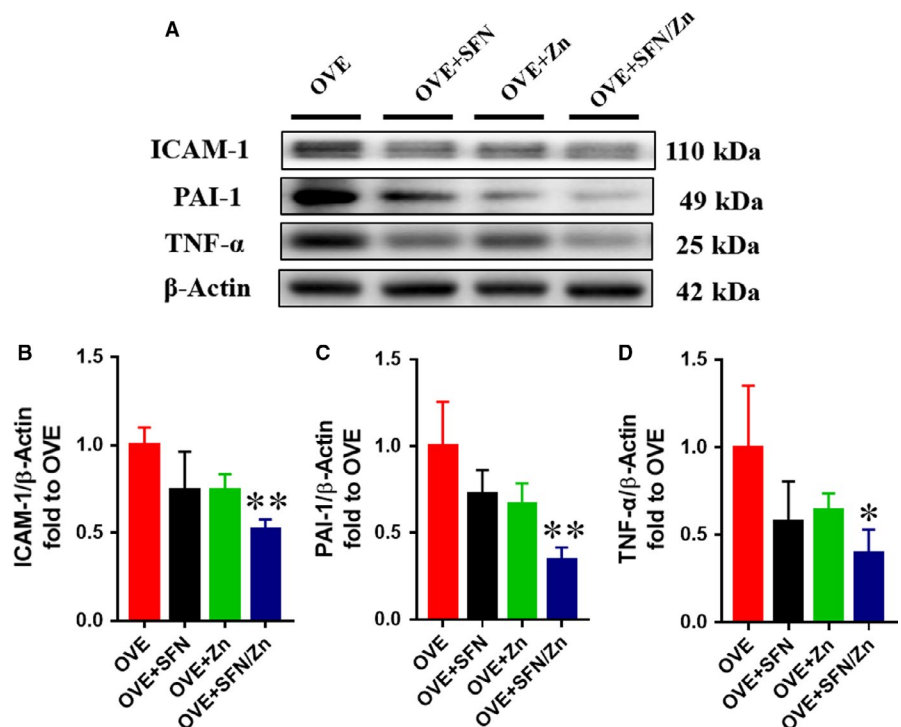


FIGURE 5 Sulforaphane and/or zinc treatment protects against the inflammation induced by type 1 diabetes. A-D, Cardiac inflammation was assessed by Western blotting for intercellular adhesion molecule-1, plasminogen activator inhibitor type 1, and tumour necrosis factor- α . Data are presented as mean \pm SD ($n = 3$ or 4). * $P < 0.05$ vs OVE mice; ** $P < 0.01$ vs OVE mice

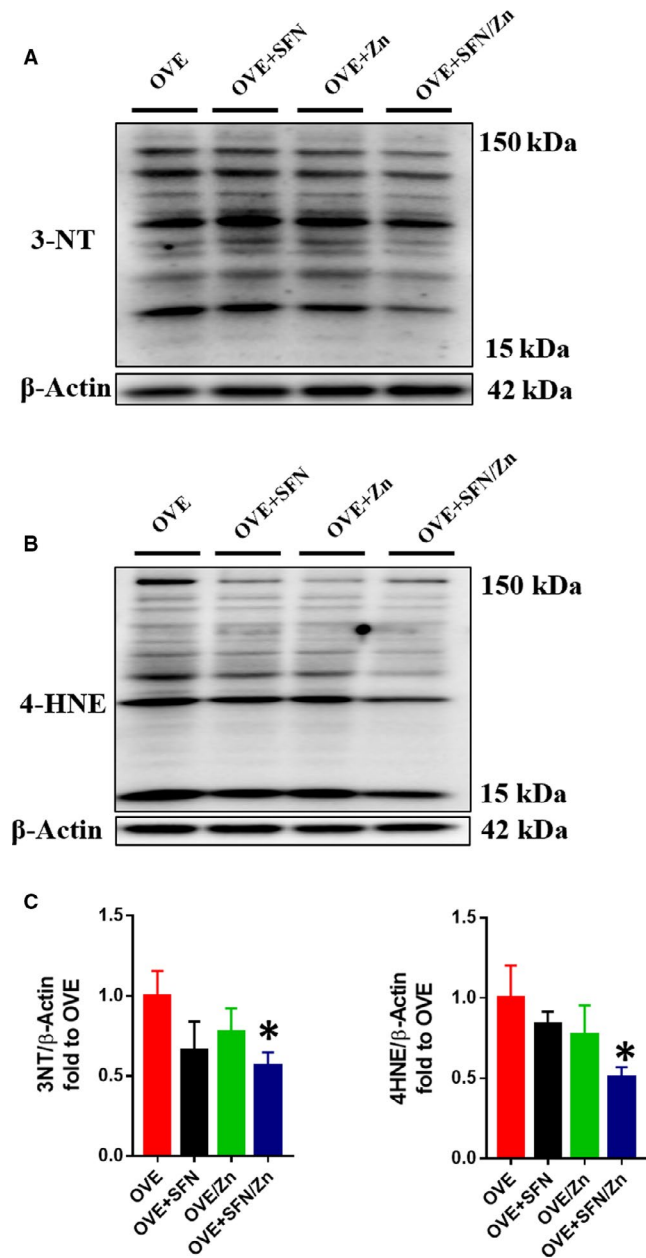


FIGURE 6 Sulforaphane and/or zinc treatment protects against oxidative stress induced by type 1 diabetes. A–D, Cardiac oxidative damage was assessed using Western blot analyses of 3-nitrotyrosine and 4-hydroxynonenal. Data are presented as mean \pm SD ($n = 3$ or 4). * $P < 0.05$ vs OVE mice

that: (a) treatment with SFN and/or Zn can effectively prevent DCM in OVE mice; (b) Nrf2 and its downstream targets play an important role in the effects of SFN and Zn; and (c) compared with the use of SFN or Zn alone, use of the combination delivered more significant cardioprotective effects, with the two substances having additive effects.

Our previous studies have shown that in WT mice SFN can induce MT expression, but this does not occur in Nrf2-KO mice; however, the absence of MT does not affect the induction of Nrf2 and its classical downstream targets by SFN.^{45,46} This indicates that MT is downstream of Nrf2. In addition, Zn can induce MT expression; therefore, a combination of the two substances can activate MT

more effectively. In our study, the expression of MT in the combined treatment group was the highest.

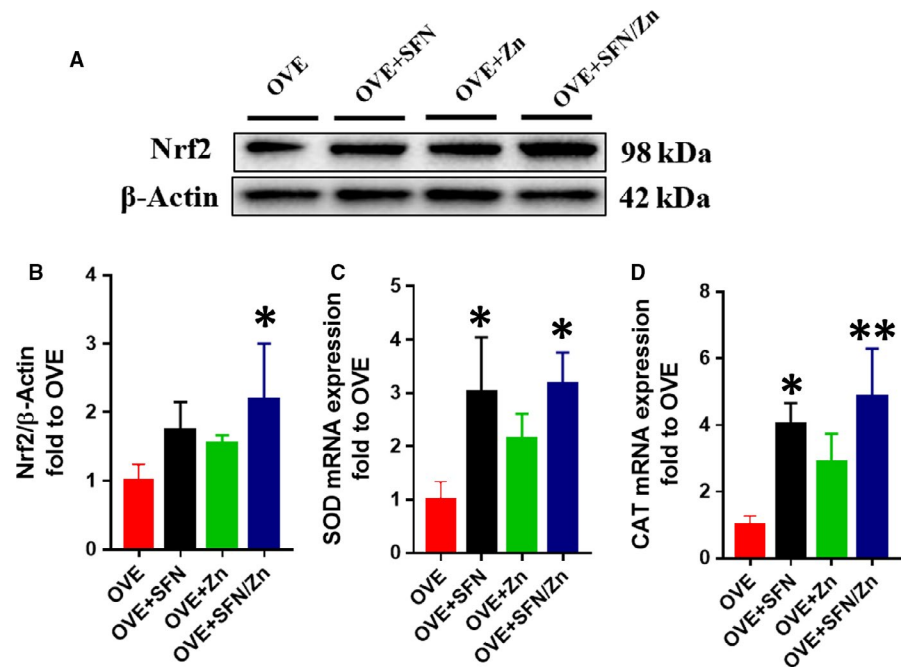
We have also found that MT-KO mice are more susceptible to oxidative stress in disease states, resulting in a further decline in Nrf2 compared with WT mice. In mice with high MT expression, Nrf2 was significantly higher than in WT mice,⁴⁷ suggesting that MT also regulates the expression of Nrf2. In another study, we found that Zn stimulates Nrf2 expression and transcription via activation of Akt-dependent inhibition of Fyn nuclear translocation.⁴⁸ Fyn is a negative regulator of Nrf2 because it enters nuclei and exports Nrf2 to the cytosol, where it is degraded.⁸¹ The translocation of Fyn into the nucleus is mediated by glycogen synthase kinase (GSK)-3 β , which is active in its dephosphorylated form and inactive when phosphorylated.⁸² The use of Zn to induce MT preserves cardiac Akt2 signals by inhibiting tribbles homolog 3 (TRB3)⁸³; consequently, GSK-3 β phosphorylation may result in a reduction in the nuclear translocation of Fyn and the export of Nrf2 to the cytosol. In this study, we have shown that the expression of Nrf2 and its classical downstream targets was also highest in the combination treatment group.

The protective effects of SFN are completely dependent on Nrf2, and the expression of genes such as NQO-1 and HO-1 is dependent on that of Nrf2.^{45,46} However, not only Nrf2 is the transcription factor that activates MT transcription, but also other transcription factors, such as metal-responsive element-binding transcription factor-1 (MTF-1), may regulate MT transcription.⁸⁴ Nrf2 or MT gene mutations sometimes occur,^{85,86} and when Nrf2 mutations are present, the Nrf2 signalling pathway is less effective at protecting against diabetes-associated myocardial damage, but in this situation, the MT signalling pathway can compensate. Conversely, when an MT mutation causes the MT signalling pathway to be less effective, the Nrf2 signalling pathway can compensate. This is consistent with our finding that the use of a combination of SFN and Zn is more effective in the prevention of DCM.

Sulforaphane has been frequently used in combination with other drugs to treat diseases. SFN and 5-fluorouracil have been shown to synergistically reduce cell growth in a triple-negative breast cancer line by inducing autophagic cell death and premature senescence.⁸⁷ In addition, epidermal squamous cell carcinoma and malignant mesothelioma can be treated using a combination of SFN and cisplatin, which inhibits tumour cell proliferation and accelerates tumour cell autophagy.^{88,89} Furthermore, the combination of SFN and myricetin can induce fat cell apoptosis through Akt-mediated mitochondrial apoptosis,⁹⁰ which may also represent a novel strategy for the treatment of obesity. Finally, in inflammatory bowel disease, a combination of SFN and selenium synergistically up-regulates TrxR-1, which plays an important role in maintaining intracellular redox homeostasis and contributes to the SFN-induced protection against free radical-mediated oxidative damage in normal colon cells.⁹¹

Zinc also has many advantages when used in combination with other drugs to treat diseases. For example, a combination of Zn and trans-retinoic acid is more effective at inhibiting the growth of *Listeria monocytogenes*.⁹² Another study demonstrated that a combination of Zn and glibenclamide limits cardiovascular complications in diabetic rats.⁹³ Thus, combination therapy not only

FIGURE 7 Sulforaphane and/or zinc treatment increases the protein expression of nuclear factor E2-related factor 2 (Nrf2) and mRNA expression of its downstream genes. A,B, The expression level of Nrf2 protein was measured by Western blotting. C,D, Nrf2 activation was assessed by measuring the mRNA expression of downstream target genes of Nrf2, superoxide dismutase-2 and catalase, by quantitative real-time PCR analysis. Data are presented as mean \pm SD ($n = 3$ or 4). * $P < 0.05$ vs OVE mice; ** $P < 0.01$ vs OVE mice



permits beneficial drug interactions, but also can reduce the adverse effects of other drugs, while achieving better therapeutic results.

In our study, many parameters were significantly different between the combination group and the OVE group, but this was not often the case with the monotherapy groups. The reasons for this are also worth discussing. Our experiments demonstrated therapeutic, rather than prophylactic, effects because treatment began after diabetes had been established in the mice. At the time of drug administration, the mice are likely to already have diabetic myocardial

damage, which will influence the efficacy of the drug. In addition, SFN was used at a dose of 0.5 mg/kg, which is a relatively low dose, which may also affect the efficacy of the treatment. In future experiments, we plan to use higher drug doses, and possibly transgenic mice, to better define the therapeutic effects of SFN and Zn against DCM.

The present study has several limitations: (a) the number of animals per group was low because of the low reproductive rate of OVE mice and (b) we did not compare FVB and its treatment groups with OVE and its treatment groups because comparisons between eight groups of mice would have been complicated to perform.

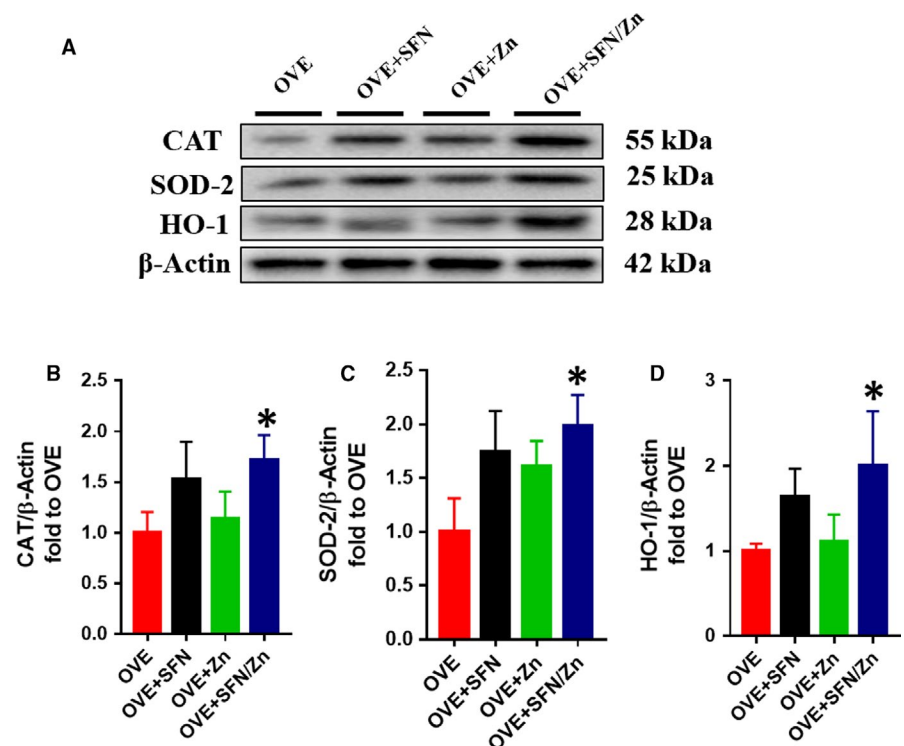


FIGURE 8 Sulforaphane and/or zinc treatment increases protein expression of nuclear factor E2-related factor 2 (Nrf2) downstream targets. A-D, Protein expression of CAT, SOD-2 and haem oxygenase-1 (HO-1), measured using Western blotting. The expression of CAT, SOD-2 and HO-1 protein was determined using the same membrane as that used to determine the expression of Nrf2 proteins in Figure 7A. The β -actin membrane was the same as that used in Figure 7. Data are presented as mean \pm SD ($n = 3$ or 4). * $P < 0.05$ vs OVE mice

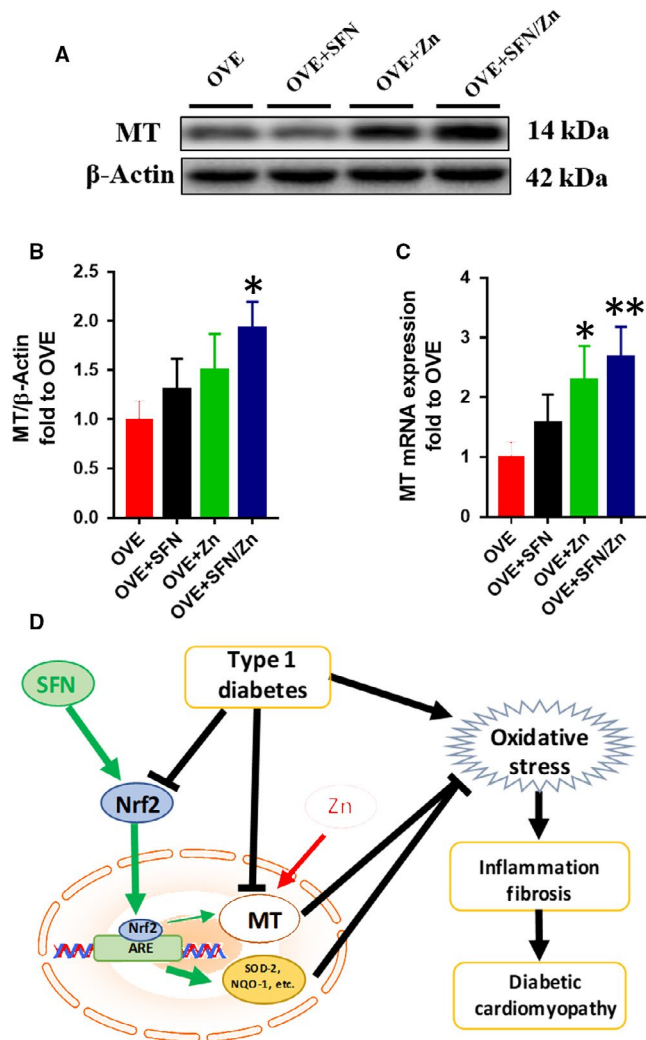


FIGURE 9 Sulforaphane and/or zinc treatment increases mRNA and protein expression of metallothionein (MT). A,B, Protein expression of MT measured using Western blotting. C, mRNA expression of MT measured using quantitative real-time PCR. D, Schematic illustration of the effects of SFN and/or Zn treatment on diabetic cardiomyopathy induced by T1D. SFN activates Nrf2 and its downstream genes, and MT can be also up-regulated by SFN via Nrf2. Zn directly activates MT, and the activation of these signalling pathways by SFN and Zn has additive effects on anti-oxidative stress. Data are presented as mean \pm SD ($n = 3$ or 4). * $P < 0.05$ vs OVE mice; ** $P < 0.01$ vs OVE mice

In summary, our study is the first to use SFN and Zn in combination and to observe their combined efficacy against DCM in OVE mice. By effectively activating Nrf2 and its classical downstream targets, and MT, this combination can ameliorate the defects associated with DCM more effectively than monotherapy. These findings may suggest new avenues for the future clinical treatment of DCM.

ACKNOWLEDGEMENTS

This study was supported in part by the National Science Foundation of China (8167020110, 81570338) and the American Diabetes

Association (1-18-IBS-082). We thank BioEdit for the language editing of the manuscript.

CONFLICT OF INTEREST

The authors confirm that there are no conflicts of interest.

AUTHOR CONTRIBUTIONS

QL and LC originally designed the project. JW performed experiments, analysed data and wrote the manuscript. SW, WW, JC, QZ and ZZ performed partial experiments and data collection. LC was responsible for scientific review and manuscript editing. QL and LC monitored project progression, modified the experimental designs and revised the manuscript. All authors approved the final version of the manuscript.

ORCID

Lu Cai  <https://orcid.org/0000-0003-3048-1135>

REFERENCES

1. Cho NH, Shaw JE, Karuranga S, et al. IDF Diabetes Atlas: global estimates of diabetes prevalence for 2017 and projections for 2045. *Diabetes Res Clin Pract.* 2018;138:271-281.
2. You W-P, Henneberg M. Type 1 diabetes prevalence increasing globally and regionally: the role of natural selection and life expectancy at birth. *BMJ Open Diabetes Res Care.* 2016;4:e000161-e.
3. Steck AK, Rewers MJ. Genetics of type 1 diabetes. *Clin Chem.* 2011;57:176-185.
4. Maahs DM, West NA, Lawrence JM, Mayer-Davis EJ. Epidemiology of type 1 diabetes. *Endocrinol Metab Clin North Am.* 2010;39:481-497.
5. Onda Y, Sugihara S, Ogata T, et al. Incidence and prevalence of childhood-onset Type 1 diabetes in Japan: the T1D study. *Diabetic Med.* 2017;34:909-915.
6. Fox DA, Islam N, Sutherland J, Reimer K, Amed S. Type 1 diabetes incidence and prevalence trends in a cohort of Canadian children and youth. *Pediatr Diabetes.* 2018;19:501-505.
7. Melendez-Ramirez LY, Richards RJ, Cefalu WT. Complications of type 1 diabetes. *Endocrinol Metab Clin.* 2010;39:625-640.
8. Libby P, Nathan DM, Abraham K, et al. Report of the National Heart, Lung, and Blood Institute-National Institute of Diabetes and Digestive and Kidney Diseases Working Group on cardiovascular complications of type 1 diabetes mellitus. *Circulation.* 2005;111:3489-3493.
9. Standards of Medical care in diabetes—2014. *Diabetes Care.* 2014;37:S14-S80.
10. Hu X, Rajesh M, Zhang J, et al. Protection by dimethyl fumarate against diabetic cardiomyopathy in type 1 diabetic mice likely via activation of nuclear factor erythroid-2 related factor 2. *Toxicol Lett.* 2018;287:131-141.
11. Zhang H, Chen X, Zong B, et al. Gypenosides improve diabetic cardiomyopathy by inhibiting ROS-mediated NLRP3 inflammasome activation. *J Cell Mol Med.* 2018;19:501-505.
12. Rubler S, Dlugash J, Yuceoglu YZ, Kumral T, Branwood AW, Grishman A. New type of cardiomyopathy associated with diabetic glomerulosclerosis. *Am J Cardiol.* 1972;30:595-602.
13. Asbun J, Villarreal FJ. The pathogenesis of myocardial fibrosis in the setting of diabetic cardiomyopathy. *J Am Coll Cardiol.* 2006;47:693-700.

14. Bugger H, Abel ED. Molecular mechanisms of diabetic cardiomyopathy. *Diabetologia*. 2014;57:660-671.
15. Huynh K, Bernardo BC, McMullen JR, Ritchie RH. Diabetic cardiomyopathy: mechanisms and new treatment strategies targeting antioxidant signaling pathways. *Pharmacol Ther*. 2014;142:375-415.
16. Shimizu M, Umeda K, Sugihara N, et al. Collagen remodelling in myocardia of patients with diabetes. *J Clin Pathol*. 1993;46:32-36.
17. Gotzsche O, Darwish A, Gotzsche L, et al. Incipient cardiomyopathy in young insulin-dependent diabetic patients: a seven-year prospective Doppler echocardiographic study. *Diabetic Med*. 1996;13:834-840.
18. Boudina S, Abel ED. Diabetic cardiomyopathy revisited. *Circulation*. 2007;115:3213-3223.
19. Liu Q, Wang S, Cai L. Diabetic cardiomyopathy and its mechanisms: role of oxidative stress and damage. *J Diabetes Investig*. 2014;5:623-634.
20. Wei W, Liu Q, Tan Y, Liu L, Li X, Cai L. Oxidative stress, diabetes, and diabetic complications. *Hemoglobin*. 2009;33:370-377.
21. El husseny M, Mamdouh M, Shaban S, et al. Potential therapeutic targets for vascular dysfunction in type II diabetes mellitus and obesity. *J Diabetes Res*. 2017;2017:11.
22. Tuhin RH, Begum MM, Rahman MS, et al. Wound healing effect of *Euphorbia hirta* linn. (Euphorbiaceae) in alloxan induced diabetic rats. *BMC Complement Altern Med*. 2017;17:423.
23. Chen B, Lu Y, Chen Y, Cheng J. The role of Nrf2 in oxidative stress-induced endothelial injuries. *J Endocrinol*. 2015;225:R83-R99.
24. Niture SK, Khatri R, Jaiswal AK. Regulation of Nrf2—an update. *Free Rad Biol Med*. 2014;66:36-44.
25. Zhang Z, Zhou S, Jiang X, et al. The role of the Nrf2/Keap1 pathway in obesity and metabolic syndrome. *Rev Endocr Metab Disord*. 2015;16:35-45.
26. Ye G, Metreveli NS, Ren J, Epstein PN. Metallothionein prevents diabetes-induced deficits in cardiomyocytes by inhibiting reactive oxygen species production. *Diabetes*. 2003;52:777-783.
27. Wang Y, Zhang Z, Sun W, et al. Sulforaphane attenuation of type 2 diabetes-induced aortic damage was associated with the upregulation of Nrf2 expression and function. *Oxid Med Cell Longev*. 2014;2014:11.
28. Xu Z, Wang S, Ji H, et al. Broccoli sprout extract prevents diabetic cardiomyopathy via Nrf2 activation in db/db T2DM mice. *Sci Rep*. 2016;6:30252.
29. Li B, Liu S, Miao L, Cai L. Prevention of diabetic complications by activation of Nrf2: diabetic cardiomyopathy and nephropathy. *Exp Diabetes Res*. 2012;2012:7.
30. Tan Y, Ichikawa T, Li J, et al. Diabetic downregulation of Nrf2 activity via ERK contributes to oxidative stress-induced insulin resistance in cardiac cells in vitro and in vivo. *Diabetes*. 2011;60:625-633.
31. He X, Kan H, Cai L, Ma Q. Nrf2 is critical in defense against high glucose-induced oxidative damage in cardiomyocytes. *J Mol Cell Cardiol*. 2009;46:47-58.
32. Cousins RJ. Absorption, transport, and hepatic metabolism of copper and zinc: special reference to metallothionein and ceruloplasmin. *Physiol Rev*. 1985;65:238-309.
33. Sato M, Bremner I. Oxygen free radicals and metallothionein. *Free Rad Biol Med*. 1993;14:325-337.
34. Cai L, Wang Y, Zhou G, et al. Attenuation by metallothionein of early cardiac cell death via suppression of mitochondrial oxidative stress results in a prevention of diabetic cardiomyopathy. *J Am Coll Cardiol*. 2006;48:1688-1697.
35. Fang CX, Dong F, Ren BH, Epstein PN, Ren J. Metallothionein alleviates cardiac contractile dysfunction induced by insulin resistance: role of Akt phosphorylation, PTB1B, PPAR γ and c-Jun. *Diabetologia*. 2005;48:2412-2421.
36. Cai L, Wang J, Li Y, et al. Inhibition of superoxide generation and associated nitrosative damage is involved in metallothionein prevention of diabetic cardiomyopathy. *Diabetes*. 2005;54:1829-1837.
37. Wang J, Song Y, Elsherif L, et al. Cardiac metallothionein induction plays the major role in the prevention of diabetic cardiomyopathy by zinc supplementation. *Circulation*. 2006;113:544-554.
38. Fahey JW, Zhang Y, Talalay P. Broccoli sprouts: an exceptionally rich source of inducers of enzymes that protect against chemical carcinogens. *Proc Natl Acad Sci USA*. 1997;94:10367-10372.
39. Yang L, Palliyaguru DL, Kensler TW. Frugal chemoprevention: targeting Nrf2 with foods rich in sulforaphane. *Semin Oncol*. 2016;43:146-153.
40. Houghton CA, Fassett RG, Coombes JS. Sulforaphane and other nutrigenomic Nrf2 activators: can the clinician's expectation be matched by the reality? *Oxid Med Cell Longev*. 2016;2016:7857186-.
41. Ho E, Clarke JD, Dashwood RH. Dietary sulforaphane, a histone deacetylase inhibitor for cancer prevention. *J Nutr*. 2009;139:2393-2396.
42. Myzak MC, Dashwood RH. Chemoprotection by sulforaphane: keep one eye beyond Keap1. *Cancer Lett*. 2006;233:208-218.
43. Dinkova-Kostova AT, Kostov RV. Glucosinolates and isothiocyanates in health and disease. *Trends Mol Med*. 2012;18:337-347.
44. Houghton CA, Coombes JS, Fassett RG. Sulforaphane: translational research from laboratory bench to clinic. *Nutr Rev*. 2013;71:709-726.
45. Wu H, Kong L, Cheng Y, et al. Metallothionein plays a prominent role in the prevention of diabetic nephropathy by sulforaphane via up-regulation of Nrf2. *Free Rad Biol Med*. 2015;89:431-442.
46. Gu J, Cheng Y, Wu H, et al. Metallothionein is downstream of Nrf2 and partially mediates sulforaphane prevention of diabetic cardiomyopathy. *Diabetes*. 2017;66:529-542.
47. Zhou S, Yin X, Jin J, et al. Intermittent hypoxia-induced cardiomyopathy and its prevention by Nrf2 and metallothionein. *Free Rad Biol Med*. 2017;112:224-239.
48. Li B, Cui W, Tan Y, et al. Zinc is essential for the transcription function of Nrf2 in human renal tubule cells in vitro and mouse kidney in vivo under the diabetic condition. *J Cell Mol Med*. 2014;18:895-906.
49. Bai Y, Wang X, Zhao S, Ma C, Cui J, Zheng Y. Sulforaphane protects against cardiovascular disease via Nrf2 activation. *Oxid Med Cell Longev*. 2015;2015:13.
50. Darvekar SR, Elvenes J, Brenne HB, Johansen T, Sjøttem E. SPBP is a sulforaphane induced transcriptional coactivator of NRF2 regulating expression of the autophagy receptor p62/SQSTM1. *PLoS ONE*. 2014;9:e85262.
51. Sun W, Miao X, Zhou S, et al. Zinc rescue of Akt2 gene deletion-linked murine cardiac dysfunction and pathological changes is metallothionein-dependent. *J Mol Cell Cardiol*. 2014;74:88-97.
52. Zheng S, Carlson EC, Yang L, Kralik PM, Huang Y, Epstein PN. Podocyte-specific overexpression of the antioxidant metallothionein reduces diabetic nephropathy. *J Am Soc Nephrol*. 2008;19:2077-2085.
53. Epstein PN, Overbeek PA, Means AR. Calmodulin-induced early-onset diabetes in transgenic mice. *Cell*. 1989;58:1067-1073.
54. Inada A, Kanamori H, Arai H, et al. A model for diabetic nephropathy: advantages of the inducible cAMP early repressor transgenic mouse over the streptozotocin-induced diabetic mouse. *J Cell Physiol*. 2008;215:383-391.
55. Shoham S, Bejar C, Kovalev E, Weinstock M. Intracerebroventricular injection of streptozotocin causes neurotoxicity to myelin that contributes to spatial memory deficits in rats. *Exp Neurol*. 2003;184:1043-1052.
56. Wold LE, Ren J. Streptozotocin directly impairs cardiac contractile function in isolated ventricular myocytes via a p38 map kinase-dependent oxidative stress mechanism. *Biochem Biophys Res Commun*. 2004;318:1066-1071.
57. Kannel WB, Hjortland M, Castelli WP. Role of diabetes in congestive heart failure: the Framingham study. *Am J Cardiol*. 1974;34:29-34.
58. Bai Y, Cui W, Xin Y, et al. Prevention by sulforaphane of diabetic cardiomyopathy is associated with up-regulation of Nrf2 expression and transcription activation. *J Mol Cell Cardiol*. 2013;57:82-95.

59. U.S. Food and Drug Administration. *Guidance for Industry: Estimating the Maximum Safe Starting Dose in Adult Healthy Volunteer*. Rockville, MD: USFDA; 2005.
60. Vermeulen M, Klöpping-Ketelaars I, van den Berg R, Vaes W. Bioavailability and kinetics of sulforaphane in humans after consumption of cooked versus raw broccoli. *J Agric Food Chem*. 2008;56:10505-10509.
61. Wang GC, Farnham M, Jeffery EH. Impact of thermal processing on sulforaphane yield from broccoli (*Brassica oleracea* L. ssp. italica). *J Agric Food Chem*. 2012;60:6743-6748.
62. Wise RA, Holbrook JT, Criner G, et al. Lack of effect of oral sulforaphane administration on Nrf2 expression in COPD: a randomized, double-blind, placebo controlled trial. *PLoS ONE*. 2016;11:e0163716.
63. Fahey JW, Wade KL, Wehage SL, et al. Stabilized sulforaphane for clinical use: phytochemical delivery efficiency. *Mol Nutr Food Res*. 2017;61:1600766.
64. Hosui A, Kimura E, Abe S, et al. Long-term zinc supplementation improves liver function and decreases the risk of developing hepatocellular carcinoma. *Nutrients*. 2018;10:1955.
65. Chavez-Tapia NC, Cesar-Arce A, Barrientos-Gutiérrez T, Villegas-López FA, Méndez-Sánchez N, Uribe M. A systematic review and meta-analysis of the use of oral zinc in the treatment of hepatic encephalopathy. *Nutr J*. 2013;12:74.
66. Alsalman A, Almashhedy LA, Hadwan MH. Effect of oral zinc supplementation on the thiol oxidoreductive index and thiol-related enzymes in seminal plasma and spermatozoa of Iraqi Asthenospermic patients. *Biol Trace Elem Res*. 2018;184:340-349.
67. Haase H, Overbeck S, Rink L. Zinc supplementation for the treatment or prevention of disease: current status and future perspectives. *Exp Gerontol*. 2008;43:394-408.
68. Zhou G, Li X, Hein DW, et al. Metallothionein suppresses angiotensin II-induced nicotinamide adenine dinucleotide phosphate oxidase activation, nitrosative stress, apoptosis, and pathological remodeling in the Diabetic Heart. *J Am Coll Cardiol*. 2008;52:655-666.
69. Zhao Y, Tan Y, Dai J, et al. Exacerbation of diabetes-induced testicular apoptosis by zinc deficiency is most likely associated with oxidative stress, p38 MAPK activation, and p53 activation in mice. *Toxicol Lett*. 2011;200:100-106.
70. Fu WJ, Stromberg AJ, Viele K, Carroll RJ, Wu G. Statistics and bioinformatics in nutritional sciences: analysis of complex data in the era of systems biology. *J Nutr Biochem*. 2010;21:561-572.
71. Liang T, Zhang Q, Sun W, et al. Zinc treatment prevents type 1 diabetes-induced hepatic oxidative damage, endoplasmic reticulum stress, and cell death, and even prevents possible steatohepatitis in the OVE26 mouse model: important role of metallothionein. *Toxicol Lett*. 2015;233:114-124.
72. Ryu MJ, Chung HS. Fucoidan reduces oxidative stress by regulating the gene expression of HO-1 and SOD-1 through the Nrf2/ERK signaling pathway in HaCaT cells. *Mol Med Rep*. 2016;14:3255-3260.
73. Hyeon S, Lee H, Yang Y, Jeong W. Nrf2 deficiency induces oxidative stress and promotes RANKL-induced osteoclast differentiation. *Free Rad Biol Med*. 2013;65:789-799.
74. Abdo S, Shi Y, Otoukesh A, et al. Catalase overexpression prevents nuclear factor erythroid 2-related factor 2 stimulation of renal angiotensinogen gene expression, hypertension, and kidney injury in diabetic mice. *Diabetes*. 2014;63:3483-3496.
75. Jiang X, Bai Y, Zhang Z, Xin Y, Cai L. Protection by sulforaphane from type 1 diabetes-induced testicular apoptosis is associated with the up-regulation of Nrf2 expression and function. *Toxicol Appl Pharmacol*. 2014;279:198-210.
76. Cui W, Bai Y, Miao X, et al. Prevention of diabetic nephropathy by sulforaphane: possible role of Nrf2 upregulation and activation. *Oxid Med Cell Longev*. 2012;2012:12.
77. Wang Y, Zhang Z, Guo W, et al. Sulforaphane reduction of testicular apoptotic cell death in diabetic mice is associated with the upregulation of Nrf2 expression and function. *Am J Physiol Endocrinol Metab*. 2014;307:E14-E23.
78. Wang X, Li H, Fan Z, Liu Y. Effect of zinc supplementation on type 2 diabetes parameters and liver metallothionein expressions in Wistar rats. *J Physiol Biochem*. 2012;68:563-572.
79. Ohly P, Dohle C, Abel J, Seissler J, Gleichmann H. Zinc sulphate induces metallothionein in pancreatic islets of mice and protects against diabetes induced by multiple low doses of streptozotocin. *Diabetologia*. 2000;43:1020-1030.
80. Liu F, Ma F, Kong G, Wu K, Deng Z, Wang HU. Zinc supplementation alleviates diabetic peripheral neuropathy by inhibiting oxidative stress and upregulating metallothionein in peripheral nerves of diabetic rats. *Biol Trace Elem Res*. 2014;158:211-218.
81. Kaspar JW, Jaiswal AK. Tyrosine phosphorylation controls nuclear export of Fyn, allowing Nrf2 activation of cytoprotective gene expression. *FASEB J*. 2011;25:1076-1087.
82. Jain AK, Jaiswal AK. GSK-3 β acts upstream of Fyn kinase in regulation of nuclear export and degradation of NF-E2 related factor 2. *J Biol Chem*. 2007;282:16502-16510.
83. Gu J, Yan X, Dai X, et al. Metallothionein preserves Akt2 activity and cardiac function via inhibiting TRB3 in diabetic hearts. *Diabetes*. 2018;67:507-517.
84. Bi Y, Palmiter RD, Wood KM, Ma Q. Induction of metallothionein I by phenolic antioxidants requires metal-activated transcription factor 1 (MTF-1) and zinc. *Biochem J*. 2004;380:695-703.
85. Sens MA, Somji S, Garrett SH, Beall CL, Sens DA. Metallothionein isoform 3 overexpression is associated with breast cancers having a poor prognosis. *Am J Pathol*. 2001;159:21-26.
86. Zavattari P, Perra A, Menegon S, et al. Nrf2, but not β -catenin, mutation represents an early event in rat hepatocarcinogenesis. *Hepatology*. 2015;62:851-862.
87. Milczarek M, Wiktorska K, Mielczarek L, et al. Autophagic cell death and premature senescence: new mechanism of 5-fluorouracil and sulforaphane synergistic anticancer effect in MDA-MB-231 triple negative breast cancer cell line. *Food Chem Toxicol*. 2018;111:1-8.
88. Kerr C, Adhikary G, Grun D, George N, Eckert RL. Combination cisplatin and sulforaphane treatment reduces proliferation, invasion, and tumor formation in epidermal squamous cell carcinoma. *Mol Carcinog*. 2018;57:3-11.
89. Lee YJ, Lee SH. Pro-oxidant activity of sulforaphane and cisplatin potentiates apoptosis and simultaneously promotes autophagy in malignant mesothelioma cells. *Mol Med Rep*. 2017;16:2133-2141.
90. Yao A, Shen Y, Zhang Z, et al. Sulforaphane and myricetin act synergistically to induce apoptosis in 3T3-L1 adipocytes. *Mol Med Rep*. 2018;17:2945-2951.
91. Wang Y, Dacosta C, Wang W, Zhou Z, Liu M, Bao Y. Synergy between sulforaphane and selenium in protection against oxidative damage in colonic CCD841 cells. *Nutr Res*. 2015;35:610-617.
92. Castillo Y, Tachibana M, Nakatsu Y, Watanabe K, Shimizu T, Watarai M. Combination of zinc and all-trans retinoic acid promotes protection against *Listeria monocytogenes* infection. *PLoS ONE*. 2015;10:e0137463.
93. Attia H, Al-Rasheed N, Al-Rasheed N, Faddah L. The combination of zinc and glibenclamide limits cardiovascular complications in diabetic rats via multiple mechanisms. *Pak J PharmSci*. 2015;28.

How to cite this article: Wang J, Wang S, Wang W, et al. Protection against diabetic cardiomyopathy is achieved using a combination of sulforaphane and zinc in type 1 diabetic OVE26 mice. *J Cell Mol Med*. 2019;23:6319-6330. <https://doi.org/10.1111/jcmm.14520>