



Published in final edited form as:

Biol Psychol. 2019 September ; 146: 107732. doi:10.1016/j.biopsycho.2019.107732.

Neural oscillatory dynamics of inhibitory control in young adult binge drinkers

Lee A. Holcomb^a, Siyuan Huang^a, Stephen M. Cruz^b, Ksenija Marinkovic^{a,c}

^aDepartment of Psychology, San Diego State University, 5500 Campanile Dr, San Diego, CA 92182

^bDepartment of Biology, San Diego State University, 5500 Campanile Dr, San Diego, CA 92182

^cDepartment of Radiology, University of California, San Diego, 9500 Gilman Dr, La Jolla, CA 92093

Abstract

Alcohol consumption is often characterized by heavy episodic, or binge drinking, which has been on the rise. The aim of this study was to examine the neural dynamics of inhibitory control in demographically matched groups of young, healthy adults (N=61) who reported engaging in binge (BD) or light drinking patterns (LD). Electroencephalography signal was recorded during a fast-paced visual Go/NoGo paradigm probing the ability to inhibit prepotent responses. No group differences were found in task performance. BDs showed attenuated event-related theta (4–7 Hz) on inhibition trials compared to LDs, which correlated with binge episodes and alcohol consumption but not with measures of mood or disposition including impulsivity. A greater overall decrease of early beta power (15–25 Hz) in BDs may indicate deficient preparatory “inhibitory brake” before deliberate responding. The results are consistent with deficits in the inhibitory control circuitry and are suggestive of allostatic neuroadaptive changes associated with binge drinking.

Keywords

binge drinking; alcohol; EEG; theta; beta; oscillations; Go/NoGo; inhibitory control; response inhibition

Introduction

Binge drinking is defined as alcohol consumption elevating the blood alcohol concentration (BAC) levels to at least 0.08 g/dL, which usually occurs when four/five drinks are consumed

Corresponding author: Ksenija Marinkovic, Ph.D., Department of Psychology, 5500 Campanile Dr., San Diego State, University, San Diego, CA 92182, USA. kmarinkovic@sdsu.edu, Telephone: 619-594-1510.

Declarations of interest: none

Publisher's Disclaimer: This is a PDF file of an unedited manuscript that has been accepted for publication. As a service to our customers we are providing this early version of the manuscript. The manuscript will undergo copyediting, typesetting, and review of the resulting proof before it is published in its final citable form. Please note that during the production process errors may be discovered which could affect the content, and all legal disclaimers that apply to the journal pertain.

by women or men, respectively, within two hours (National Institute on Alcohol Abuse and Alcoholism, 2017). However, many individuals exceed this level of intake and consume alcohol at much higher levels (Naimi et al., 2010; Terry-McElrath and Patrick, 2016). Binge pattern of excessive drinking is associated with a range of negative consequences and incurs high costs to society (Bouchery et al., 2011; Sacks et al., 2015). It represents a major public health concern given rising prevalence rates (Hingson et al., 2017), and the evidence that harmful consequences increase with hazardous drinking levels (Haber et al., 2016).

It has been proposed that binge drinking may be a precursor to alcohol use disorder (AUD) as alcohol consumption transitions from impulsivity to compulsivity (Kimbrough et al., 2017; Koob, 2013; Koob and Le Moal, 2008a). Indeed, increased alcohol consumption is associated with impaired self-control which could contribute to excessive drinking and may predict future heavy drinking and alcohol dependence (Nigg et al., 2006; Paz et al., 2018). Behavioral disinhibition is considered to be an important dimension in the development of AUD (Goldstein and Volkow, 2011; Koob and Volkow, 2010; Kwako et al., 2016; Volkow et al., 2002) and prefrontally-mediated deficits of inhibitory control and other executive functions have been found in individuals with AUD (Le Berre et al., 2017; Oscar-Berman and Marinkovic, 2004, 2007; Sullivan and Pfefferbaum, 2005). Furthermore, neuroimaging evidence indicates that acute alcohol intoxication primarily affects the prefrontal neurofunctional system subserving top-down cognitive control (Anderson et al., 2011; Kovacevic et al., 2012; Marinkovic et al., 2012a; Marinkovic et al., 2013; Rosen et al., 2016), including impairments of response inhibition (Gan et al., 2014; Kareken et al., 2013; Marinkovic et al., 2000; Nikolaou et al., 2013; Schuckit et al., 2012).

Inhibitory control relies on the ability to suppress inappropriate or unwanted actions (Aron et al., 2014; Chikazoe et al., 2007), but it also critically engages other cognitive functions including attentional control and working memory (Erika-Florence et al., 2014; Hampshire, 2015). It has been studied extensively with tasks that demand stopping or withholding dominant responses, such as a Go/NoGo task (Aron et al., 2014; Simmonds et al., 2008). This paradigm instructs participants to rapidly respond to target or “Go” stimuli (response activation), and to withhold responding to occasional “NoGo” stimuli (response inhibition) (Garavan et al., 1999). Functional magnetic resonance imaging (fMRI) studies have indicated that successful performance on the Go/NoGo task primarily recruits prefrontal regions, including the ventral and lateral prefrontal cortices, the anterior cingulate cortex (ACC), the presupplementary motor area (preSMA), and the basal ganglia among others (Aron et al., 2014; Criaud and Boulinguez, 2013; Hampshire et al., 2010; Levy and Wagner, 2011; Simmonds et al., 2008; Swick et al., 2011; Wiecki and Frank, 2013). Although fMRI is an excellent spatial mapping tool, its temporal resolution is low due to constraints imposed by neurovascular coupling (Buxton, 2002). In contrast, scalp electroencephalography (EEG) measures neural activity directly and can provide highly precise insight into the task-evoked neural activity in real time but its spatial resolution is limited due to biophysical properties of the signal (Nunez and Srinivasan, 2006).

Because of its oscillatory nature, the EEG signal can be analyzed within the relevant frequency bands during task engagement (Amzica and Lopes da Silva, 2011; Basar et al., 2001; Engel and Fries, 2010; Lundqvist et al., 2018; Pfurtscheller and Lopes da Silva, 1999).

Event-related theta oscillations (4 – 7 Hz) are sensitive to cognitive effort elicited by tasks probing cognitive control and performance monitoring (Brier et al., 2010; Cavanagh and Frank, 2014; Hanslmayr et al., 2008; Kovacevic et al., 2012; Rosen et al., 2016). Studies using source-localization of the magnetoencephalography (MEG) and EEG signal have shown that the ACC and preSMA in the medial prefrontal cortex are major generators of event-related theta oscillations during such tasks (Hanslmayr et al., 2008; Kovacevic et al., 2012; Marinkovic et al., 2019; Marinkovic et al., 2012b). These observations have been confirmed with intracranial EEG recordings which have revealed that the ACC is a principal generator of the fronto-midline theta observed on the scalp (Cohen et al., 2008; Wang et al., 2005). Additional sources have been reported in the lateral prefrontal cortex (Beaton et al., 2018; Correas et al., 2018; Kovacevic et al., 2012; Marinkovic et al., 2019; Raghavachari et al., 2001; Rosen et al., 2016).

Studies manipulating acute alcohol intoxication have shown that event-related theta oscillations are attenuated by a moderate alcohol dose especially under high-conflict conditions during decision making (Beaton et al., 2018; Kovacevic et al., 2012; Marinkovic et al., 2019; Marinkovic et al., 2012b; Rosen et al., 2016). Based on their association with AUD in genetic linkage studies, theta oscillations have been suggested as an endophenotype indicating a predisposition to develop alcoholism or inhibitory-related disorders (Rangaswamy et al., 2007; Salvatore et al., 2015). However, the supporting evidence of theta involvement in inhibitory control in binge drinkers or individuals with AUD is scarce. Most of the extant studies have used an equiprobable (50:50) Go/NoGo design which biases responding strategy towards target detection at the expense of inhibitory control (Wessel, 2018). Since the Go (target) stimuli are much more salient for task performance, they evoke greater prefrontal theta when measured with MEG, which is attenuated in BDs (Correas et al., 2018). EEG studies with equiprobable Go/NoGo tasks in young BDs have reported reduced theta power in BDs to both target and nontarget stimuli (Lopez-Caneda et al., 2017). Similarly, in two EEG studies using this design, abstaining individuals with chronic AUD, and offspring of individuals with AUD who were deemed to be at high risk for developing alcoholism, showed lower event-related theta power than control participants (Kamarajan et al., 2006; Kamarajan et al., 2004; Pandey et al., 2016). However, studies using theta to examine inhibitory control in binge drinkers or in individuals with AUD with an asymmetric Go/NoGo design are lacking. To address this gap in the literature, the present study employed a fast-pace task variant with a 80:20 Go/NoGo ratio which establishes Go response dominance and engages inhibitory control on NoGo trials (Wessel, 2018). This has allowed us to test the hypothesis that binge drinking is associated with impaired inhibitory control and to examine whether this is reflected in attenuated task-dependent theta oscillations.

Furthermore, because this task requires countermanding of a prepotent tendency to respond, we examined task-dependent beta oscillations (15–25 Hz) which provide temporally precise insight into anticipatory motor engagement, response preparation, inhibition, and execution. Beta oscillations are considered to be the preferred frequency of the sensorimotor system and can serve as an index of the functional engagement of the underlying cortico-subcortical circuitry (Baker, 2007; Jenkinson and Brown, 2011; Khanna and Carmena, 2017; Kilavik et al., 2013). They are particularly sensitive to the neural activity related to movement

activation and inhibition (Engel and Fries, 2010; Jenkinson and Brown, 2011) and are affected by alcohol intoxication (Marinkovic et al., 2000), but they have not been examined in the context of binge drinking. Unlike event-related theta power which increases in response to a salient stimulus, beta power is high at baseline and it decreases during anticipatory, actual, or even imagined engagement of the motor system. Following a potential brief beta increase that may be inhibitory in nature (Pogosyan et al., 2009; Swann et al., 2009), beta decrease (also termed “desynchronization”) is the principal characteristic of event-related beta power. It is easily observed during movement preparation as it presumably indicates readiness to execute a motor response (Baker, 2007; Engel and Fries, 2010; Jenkinson and Brown, 2011; Kilavik et al., 2013). The beta decrease is most dominant over the sensorimotor cortices which are the primary generators of the observed beta changes (Beaton et al., 2018). After a command to execute or inhibit a movement has been issued but before the actual response, beta power rebounds and increases above baseline levels (Cheyne et al., 2006; Kilavik et al., 2013). The beta rebound has shorter latency on NoGo trials on which there is no actual response, which can be interpreted as an active inhibition process (Khanna and Carmena, 2017; Solis-Escalante et al., 2012). These features make event-related beta oscillations well suited for tracking response preparation and execution stages, as well as post-movement adjustments of the motor system in real time (Beaton et al., 2018; Jenkinson and Brown, 2011). As the Go/NoGo task probes inhibitory control with potential relevance to self-control dysregulation which is implicated in addiction (Baler and Volkow, 2006; Leeman et al., 2012), investigating beta oscillatory activity in binge drinkers is of particular interest.

The aim of the current study was to examine the neural dynamics of inhibitory control in young adults with and without histories of binge drinking. Using a visual Go/NoGo task, the present study focused on task-dependent event-related changes in theta (4 – 7 Hz) and beta (15 – 25 Hz) oscillations in order to examine the neural indices of cognitive and motor aspects of inhibitory control respectively in young adults engaging in binge drinking. We hypothesized that individuals with a history of binge drinking would exhibit impaired inhibitory control manifested in suboptimal task performance, decreased event-related theta power on NoGo trials, and alterations in the pattern of beta activity during response preparation.

Methods

Participants

Sixty-one healthy, non-smoking, right-handed individuals ($M \pm SD = 23.41 \pm 3.4$ years of age, 31 females) participated in this study. They were recruited from the local community through approved ads and postings and were queried about their alcohol and drug use and health history in a brief telephone screen interview. None of the participants reported drug or tobacco use at least one month prior to the study. They had no history of brain injury, or other neuropsychiatric or medical problems, and none were taking medications at the time of the study. In the present study, a binge episode was defined as consuming six/five or more drinks for men/women within a two hour time span. This criterion was adopted based on empirical evidence indicating that this level of drinking is more likely to result in BAC

reaching or exceeding 0.08% (Lange and Voas, 2001). Based on screening information, 29 individuals were classified as binge drinkers (BD) if they reported three or more binge episodes in the past six months with at least one episode in the last month. On average, BDs reported 14.09 ± 13.6 binge episodes in the past six months (Table 1), with median = 10, mode = 20, range = 3 to 72. The high end of the range was reported by a participant who weighed the most in the entire cohort. The next highest number of reported binge episodes in the past six months was 30. The remaining 32 participants were Low Drinkers (LD), who reported no more than one binge episode in the past six months, $.09 \pm .3$ on average. The two groups were matched on age, sex, education, ethnicity/race, and family history of alcoholism. The study's procedures were approved by the Institutional Review Board and written informed consent was obtained from each participant prior to the experiment. Participants were monetarily compensated for their participation. The data of four additional participants in the theta analysis and three from the beta analysis were discarded due to poor data quality.

Procedure

Participants completed a battery of questionnaires which included handedness (Oldfield, 1971) and medical history. They were asked about their alcohol drinking habits, including the frequency, quantity, and the pattern of alcohol consumption (modified from Cahalan et al., 1969), the magnitude of response to alcohol (Self-Rating of the Effects of Alcohol, SRE, Schuckit et al., 1997), the severity of their alcoholism-related symptoms (Short Michigan Alcoholism Screening Test, SMAST, Selzer et al., 1975), their motives for engaging in alcohol use (Drinking Motive Questionnaire, DMQ, Kuntsche and Kuntsche, 2009), and the consequences of their drinking (Young Adult Alcohol Consequences Questionnaire, YAACQ, Read et al., 2006). They provided a detailed report on their daily drinking during the past month (Timeline Followback, TLFB, Sobell and Sobell, 1996). Their disinhibition and impulsivity traits were assessed by an abbreviated Impulsiveness Scale (Abbreviated Impulsiveness Scale, ABIS, Coutlee et al., 2014). Participants also completed questionnaires to measure their personality (Eysenck Personality Questionnaire, EPQ, Eysenck and Eysenck, 1975), depression (Patient Health Questionnaire-9, PHQ, Kroenke and Spitzer, 2002), and anxiety (Generalized Anxiety Disorder, GAD, Spitzer et al., 2006). In addition, they completed the NIH Toolbox Cognitive Battery (Gershon et al., 2013) which included tests probing working memory, cognitive flexibility, processing speed, and episodic memory (Table 1). Participants were screened for drug use with a 12-panel urine multidrug test (Discover, American Screening Corporation) at the beginning of the recording session. They all tested negative and proceeded with the recording.

Experimental paradigm

Participants took part in a visual Go/NoGo task which probes the ability to inhibit prepotent responses. They were presented with a pseudorandomized series of 'X' and 'Y' letters and were instructed to press a button with their right index finger as quickly and as accurately as possible every time 'X' and 'Y' stimuli alternated (Go, 80% of trials) and to withhold responding when the stimuli repeated (NoGo, 20% of trials) (Garavan et al., 1999). The task comprised a total of 685 stimuli presented for 230 ms with a stimulus onset asynchrony (SOA) of 1400 ± 200 ms. A random jitter was added to each trial in 50 ms increments to

mitigate timing predictability. Stimuli were presented individually in white font on a black background with the Presentation software package (Version 18.1; www.neurobs.com) within a visual angle spanning .93° (horizontal) and 0.99° (vertical). At all other times a fixation dot was presented in the middle of the screen.

Data acquisition and analysis

EEG signal was recorded with a 64-channel Brain Vision system (Brain Products GmbH, Germany) and was sampled continuously at 500 Hz. The signal was referenced online to the nose, and a bipolarly referred vertical electro-oculogram (EOG) was recorded to monitor eyeblinks and eye movements. Electrode impedance was kept below 5 k Ω .

Data Preprocessing—EEG data were analyzed using MATLAB (Mathworks, Natick, MA) routines that incorporated publicly available algorithms including FieldTrip (Oostenveld et al., 2011), and EEGLAB (Delorme and Makeig, 2004). Continuous data were band-pass filtered at 0.1 – 100 Hz, and were segmented into epochs extending from –300 to 800 ms relative to each stimulus onset. A 300 ms pad was added to the beginning and end of the epoch to account for edge artifacts resulting from the Morlet wavelet convolution (Oostenveld et al., 2011). Noisy channels were removed by visual inspection and trials with large artifacts were removed with a threshold-based rejection. The default threshold started at 100 μ V focusing on the posterior electrodes, but was adjusted for each participant as needed with the goal of rejecting large artifacts while keeping most trials with eyeblinks. This helped to optimize an independent component analysis (ICA) method (Delorme and Makeig, 2004) which was then used to detect and remove the eyeblink and heartbeat artifacts. Data were analyzed in the time-frequency domain by computing complex power spectrum of each trial with Morlet wavelets within the theta (4–7 Hz) and beta (15–25 Hz) bands (Beaton et al., 2018; Kovacevic et al., 2012). The wavelet results were additionally inspected for artifacts and the padding was removed. The analysis was conducted in a manner blind to group membership. Average event-related power is presented as percent signal change from the baseline (–300 to 0 ms). Analysis of the raw power in the baseline indicated that the two groups did not differ in either theta or beta bands, assuring that the observed group differences were indeed due to event-related changes in power.

Data analysis—Data were analyzed for each channel which were then grouped into frontal (Fz, F1, F2, F3, F4), central (Cz, C1, C2, C3, C4) and parietal (Pz, P1, P2, P3, P4) clusters and averaged within each cluster to analyze group and condition effects on theta power (see Fig 2). For beta, only the central (Cz, C1, C2, C3, C4) electrode region was used (see Fig 3) to capture activity of the sensorimotor cortices which are the primary generators of event-related changes in beta oscillations (Baker, 2007; Beaton et al., 2018). Only trials on which responses were correctly executed (Go) and withheld (NoGo) were included in the analysis. By incorporating Go and NoGo trials in a 4:1 ratio, this task creates a prepotency to respond. As a consequence, effortful response inhibition is needed to overcome it and withhold responses on NoGo trials. This response dominance also leads to occasional premature button pressing. All responses made between –250 ms before and 200 ms after the stimulus onset were counted as premature and were excluded from the analysis.

Statistical analysis—Group differences in demographics were tested with χ^2 , and those in drinking habits, personality aspects, and cognitive functions were analyzed with a non-parametric Mann-Whitney U test to account for possible violations of distribution normality (Table 1). Data were analyzed with a mixed-design ANCOVA with Group as the between-subjects factor, Task Condition as the repeated measures factor, and impulsivity (Abbreviated Impulsiveness Scale, ABIS, Coutlee et al., 2014) as a covariate. Group differences between the frontal, central, and parietal clusters were additionally examined for theta. No effects of sex were observed in the initial analyses for either the behavioral or electrophysiological data so this factor was subsequently removed from the analysis. Associations between the principal EEG measures, representative drinking variables, and several dispositional indices were examined with a non-parametric Spearman's Rho (r_s) index that was calculated across the whole sample. The following EEG measures were included in the correlational analysis: theta NoGo, theta Go, and early beta averaged across both task conditions. Drinking variables comprised the number of binge episodes, maximum number of drinks in 24 hrs, average daily alcohol intake, and number of drinking days per week, all assessed over the past 6 months. Mood and personality variables included anxiety, depression, and impulsivity. A false discovery rate approach (.20) (Hochberg and Benjamini, 1990) was used to correct for multiple correlations.

Results

Behavioral measures

Performance—As shown in Fig 1, participants responded more accurately to Go trials ($98.3\% \pm 3.6$) than to NoGo trials ($79.1\% \pm 12.2$) resulting in a main effect of condition, $F(1, 59) = 136.61, p < .001$. No group differences were observed for response accuracy on either Go, $F(1, 59) = .39, p = .54$, or NoGo trials, $F(1, 59) = .06, p = .81$. The LD ($447.1\text{ms} \pm 88.2$) and BD ($441.5\text{ms} \pm 77.9$) groups responded with comparable speed, $F(1, 59) = .07, p = .79$.

Drinking habits, personality characteristics, and cognitive functions—Table 1. lists demographic characteristics and group differences in drinking habits, experiences and motivational dimensions, personality traits, dispositional mood measures, and cognitive functions. BDs reported more binge episodes in the previous six months than LDs, higher levels of alcohol consumption overall, they started drinking at an earlier age than LDs and experienced more negative consequences of drinking including blackouts. They expressed higher levels of social, coping, and enhancement drinking motives. BDs reported higher sensation seeking, and marginally higher levels of impulsivity, anxiety, and depression than LDs. However, the two groups did not differ on personality traits nor on cognitive tests.

Electrophysiological measures

Event-related theta power—Event-related theta power peaked at ~350 ms after stimulus onset so the effects of Group and Condition were analyzed within a time interval of 300 to 400 ms (Fig 2) to capture peak event-related changes while controlling for impulsivity. Overall, there was a main effect of Condition, as NoGo trials elicited greater event-related theta power than Go trials, $F(1, 56) = 7.9, p = .007$. A Group x Condition interaction, $F(1,$

56) = 5.7, $p = .02$ was due to theta attenuation for NoGo trials in the BD group, $F(1, 56) = 8.27$, $p = .006$, with group differences on Go trials not reaching significance, $F(1, 56) = 1.70$, $p = .19$. Region-specific analysis indicated that, compared to LDs, BDs had reduced theta power on NoGo trials at the frontal, $F(1, 56) = 5.2$, $p = .03$, central, $F(1, 56) = 9.75$, $p = .003$, and parietal, $F(1, 56) = 5.8$, $p = .02$, electrode regions. In contrast, group differences on Go trials did not reach significance for any electrode cluster including the frontal, $F(1, 56) = .41$, $p = .52$, central, $F(1, 56) = 3.18$, $p = .08$, and parietal, $F(1, 56) = 1.87$, $p = .18$ regions. Lower theta during response inhibition was associated with higher levels of drinking, as NoGo theta power correlated negatively with the number of reported binge episodes, $r_s = -.29$, $p = .03$, daily alcohol intake, $r_s = -.26$, $p = .04$, and the average number of weekly drinking days, $r_s = -.25$, $p = .05$. The maximum number of drinks consumed in 24 hrs in the previous six months correlated with theta power on NoGo, $r_s = -.29$, $p = .04$, and Go trials, $r_s = -.29$, $p = .04$. None of the dispositional variables were related to theta, all coefficients $< .07$, all p -values $> .6$.

Event-related beta power—Event-related beta power is also expressed as percent signal change from baseline (Fig 3). It starts decreasing prior to stimulus onset in anticipation of making motor movement over the sensorimotor cortices. An early, transient increase in beta power during preparatory stage is visible in LDs, followed by an overall beta decrease with a nadir at ~300 ms and a rebound of beta power subsequent to issuing a motor command. A main effect of Group was observed within 50–125 ms time window, as BDs had greater beta desynchronization than LDs, $F(1, 56) = 8.08$, $p = .006$ (Fig 3). Following the early transient increase in beta power, the LD group maintained an overall higher level of beta power. This was reflected in a main effect of Group as measured at the beta nadir (250–350ms), $F(1, 56) = 5.06$, $p = .028$ which, however, correlated with the early time interval, $r_s = .51$, $p < .001$. As expected, beta power rebounded earlier on inhibitory NoGo trials, which was confirmed by a main effect of Condition (500–600ms), $F(1, 56) = 10.33$, $p = .002$. No group differences were observed during the beta rebound, $F(1, 56) = 0.67$, $p = .42$.

Discussion

The present study examined the neural dynamics of inhibitory control in young adults as a function of their drinking patterns. In the absence of differences in task performance, BD and LD groups differed on the neural indices of the engagement of cognitive control and the circuitry subserving response preparation. Event-related theta oscillations (4 – 7 Hz) were attenuated in BDs compared to LDs on trials requiring response inhibition as shown by the Group x Condition interaction, which may indicate less efficient long-range top-down integration engaged by the salient response suppression requirement. Decreased theta power on NoGo trials was associated with increased levels of binge and high-intensity drinking, and alcohol consumptions levels but not dispositional or mood measures. An early, transient increase of event-related beta power (15 – 25 Hz) was observed in LDs which is consistent with a brief “braking pause” during response preparation which may underlie deliberate decision to respond or withhold responding and which immediately precedes issuance of the motor execution or inhibition commands. In contrast, BDs showed only a beta decrease which may be indicative of a deficient engagement of response inhibition mechanisms. Even

though the correlations between the early beta power and drinking variables did not survive correction for multiple correlations, the lower levels of inhibition during the motor preparatory stage may be suggestive of allostatic neuroadaptive changes in neural transmission as a result of heavy episodic drinking patterns. Group differences in both theta and beta frequency bands were significant after controlling for self-reported impulsivity.

A Go/NoGo task with 80% Go trials, such as the one used in the current study, probes inhibitory control by creating a prepotency to respond (Aron et al., 2014; Garavan et al., 1999; Wessel, 2018), as participants are required to withhold responding on a minority of trials. Because theta oscillations are associated with engagement of top-down cognitive control functions (Cavanagh and Frank, 2014; Kovacevic et al., 2012; Marinkovic et al., 2019; Rosen et al., 2016; Yamanaka and Yamamoto, 2010), they are well suited to examine the cognitive processes associated with behavioral control. In the current study, NoGo trials elicited much greater event-related theta power than Go trials, as would be expected based on their salience and inhibitory demands, in addition to their low presentation frequency, and task relevance. A significant Group x Condition interaction indicated that BDs exhibited attenuated theta activity selectively on NoGo trials (Fig 2), suggesting that binge drinking may be primarily associated with impaired processes that underlie inhibitory control. This novel finding is broadly consistent with previous reports of the selective vulnerability of the top-down circuitry underlying inhibitory control to alcohol intoxication (Anderson et al., 2011; Gan et al., 2014; Kareken et al., 2013; Kovacevic et al., 2012; Marinkovic et al., 2019; Marinkovic et al., 2012a; Marinkovic et al., 2013; Nikolaou et al., 2013; Rosen et al., 2016; Schuckit et al., 2012). Though less directly pertinent to inhibitory control *per se*, lower theta has been reported in studies employing equiprobable Go/NoGo tasks in large groups of individuals with AUD (Kamarajan et al., 2004; Pandey et al., 2016) and in young adult binge drinkers (Correas et al., 2018; Lopez-Caneda et al., 2017).

Functional imaging studies have reported decreased activity on NoGo or Stop-signal trials in BDs which correlated with measures of alcohol intake (Ahmadi et al., 2013; Hu et al., 2016) and impulsivity (Ahmadi et al., 2013). It has been proposed that protracted heavy alcohol intake is accompanied by incremental degradation of cognitive and motivational functions and that the resulting disinhibition, as reflected in impaired self-control, plays a major role in addiction (Crews et al., 2016; Field et al., 2008; Goldstein and Volkow, 2002, 2011; Koob and Volkow, 2010; Kwako et al., 2016; Volkow et al., 2002). Systematic reviews have confirmed deficient activity in the inhibitory control network across a range of addictions (Luijten et al., 2014). This is broadly consistent with our findings of negative correlations between NoGo theta power and a range of drinking variables including the number of self-reported binge episodes and weekly drinking levels.

Previous studies have shown that impulsivity and other externalizing traits can predict future alcohol use (Finn, 2000; Littlefield et al., 2014; Regier et al., 1990; Verdejo-Garcia et al., 2008). Indeed, dysregulation of impulse control concerns the inability to resist engaging in the activity that one declares to be unwanted or even harmful. The inability to maintain inhibitory control over drinking has been considered by some researchers to be fundamental to drug abuse (Field et al., 2010; Fillmore, 2003; Finn, 2000; Jentsch and Taylor, 1999; Sher and Trull, 1994). Evidence suggests that the vulnerability to alcoholism shares a common

genetic component with externalizing traits which may predispose individuals to a spectrum disorders including AUD (Begleiter and Porjesz, 1999; Dick et al., 2004; Heinz et al., 2011; Pihl et al., 1993; Schuckit et al., 2004). The current findings suggest that impulsivity as measured with ABIS (Coutlee et al., 2014) did not drive the observed group effects on event-related theta power on inhibitory (NoGo) trials which prevail when controlling for self-reported impulsivity, leading us to believe that these two systems have separate mediators. However, group differences indicating greater readiness to respond on the part of BDs emerged from the analysis of beta oscillations.

In an effort to investigate the neural characteristics of the ability to suppress a prepotent tendency to respond, we have analyzed event-related beta oscillations which are sensitive to motor preparation. Beta oscillations are thought to reflect functional interactions between the neocortex and the basal ganglia as beta power typically decreases in a lateralized and anticipatory manner during movement preparation and execution (Baker, 2007; Jenkinson and Brown, 2011; Kilavik et al., 2013) with a maximal nadir over the sensorimotor cortex (Beaton et al., 2018; Litvak et al., 2011). In the current study, LDs had an early, transient increase in the overall beta power at ~100 ms in contrast to BDs who showed only beta desynchronization. Beta increase is associated with motor inhibition (Khanna and Carmena, 2017; Pogosyan et al., 2009; Swann et al., 2009) so this brief rise is suggestive of a momentary, transient “inhibitory pause” prior to issuing the final motor command to execute the response. It has been well established that motor inhibition is subserved by the indirect pathway comprising cortical excitation of the striatum which inhibits the subthalamic-pallidal output to the thalamus and the cortex resulting in motor hypoactivity (Haynes and Haber, 2013; Lanciego et al., 2012; Zavala et al., 2015). Short latency of this transient beta increase is consistent with engagement of the cortico-subthalamic hyperdirect pathway which underlies rapid response suppression (Frank, 2006; Nambu et al., 2002; Wessel and Aron, 2017). This finding suggests that in LDs, the motor response sequence incorporates a brief inhibitory stage that may facilitate a deliberate decision to respond or to withhold responding possibly via lateral competition of alternative activations (Tunstall et al., 2002). In contrast, BDs did not exhibit this early beta increase which is consistent with their greater readiness to respond. Given that BDs regularly imbibe alcohol at higher levels and have more high-intensity drinking episodes than LDs, it is possible that the observed dysregulation of the early motor preparation phase reflects neural hyperexcitability. Indeed, we have reported findings on other neural indices indicating decreased inhibitory signaling during wakeful rest in binge drinkers (Affan et al., 2018). These observations are consistent with allostatic neuroadaptive changes (Clapp et al., 2008; Koob and Le Moal, 2005, 2008b) whereby hazardous drinking results in downregulation of inhibitory and upregulation of excitatory signaling (Finn and Crabbe, 1997; Most et al., 2014; Roberto and Varodayan, 2017; Vengeliene et al., 2008). With the majority of intrinsic and efferent fibers being GABAergic (Lanciego et al., 2012), the basal ganglia are particularly vulnerable to the effects of binge-like drinking which has been reported in animal models (Cuzon Carlson et al., 2011; Wilcox et al., 2014) and human postmortem studies (Laukkanen et al., 2013).

In the current study the BD and LD groups did not differ in task performance despite clear group differences in both event-related theta and beta bands. This finding is consistent with many other EEG studies reporting group differences on neural measures in the absence of

behavioral deficits (Crego et al., 2012; Crego et al., 2009; Crego et al., 2010; Lopez-Caneda et al., 2013; Lopez-Caneda et al., 2012; Lopez-Caneda et al., 2017; Maurage et al., 2009; Petit et al., 2012). This divergence between the behavioral and direct measures of neural activity is indicative of greater EEG sensitivity to neural deficits associated with the intermittent pattern of high-level drinking. Because binge drinking has been conceptualized as a transitional stage in a cyclic process potentially leading towards compulsive intake (Kimbrough et al., 2017; Koob, 2013; Koob and Le Moal, 2008a), EEG measures could potentially serve as biomarkers signifying transition to dependence.

Despite the notable novel findings of this study, there are also limitations that should be mentioned. The study employed a relatively small sample size which precluded a well-powered investigation of possible sex differences in inhibitory control. Though novel and unique, the findings of an early beta decrease in BDs that potentially signify deficient response inhibition should be replicated in a larger cohort of binge drinkers, as well as individuals with AUD.

In conclusion, the present study used EEG and a visual Go/NoGo task to examine the neural dynamics of inhibitory control in BDs in an effort to address existing gaps in the literature. Compared to LDs, BDs showed reduced event-related theta power on NoGo trials, suggesting that binge drinking is associated with deficits in the top-down circuitry subserving inhibitory control. A unique and novel finding was an early reduction in event-related beta power in BDs, which may indicate a deficient preparatory “inhibitory brake” in these individuals which may be suggestive of allostatic neuroadaptive changes associated with binge drinking. The present study has contributed novel insights into the alterations of cognitive and motor aspects of inhibitory control in binge drinkers in the absence of performance deficits. Because binge drinking has been proposed as a transitional phase leading to chronic alcoholism, the present findings may inform future studies on heavy alcohol use. The alterations in brain signals could potentially serve as diagnostic indicators of a transition to dependence. When paired with alcohol-related cues, Go/NoGo paradigms can enhance neurofeedback-based preventive strategies focusing on inhibitory control for those at risk of developing alcoholism.

Acknowledgements

This work was supported by start-up funds from the College of Sciences at San Diego State University and the National Institute on Alcohol Abuse and Alcoholism (R01-AA016624). The authors are grateful to Rifqi Affan, Audrey Andrews, Nicole Fong, and Morgan Slauter for assistance with data acquisition, and to Lauren Beaton, Laura Wagner, Joe Happer, and Martina Knezevic for assistance with data analysis and manuscript preparation.

References

- Affan RO, Huang S, Cruz SM, Holcomb LA, Nguyen E, Marinkovic K, 2018 High-intensity binge drinking is associated with alterations in spontaneous neural oscillations in young adults. *Alcohol* 70, 51–60. [PubMed: 29778070]
- Ahmadi A, Pearlson GD, Meda SA, Dager A, Potenza MN, Rosen R, Austad CS, Raskin SA, Fallahi CR, Tennen H, 2013 Influence of alcohol use on neural response to go/no-go task in college drinkers. *Neuropsychopharmacology* 38, 2197–2208. [PubMed: 23670589]

- Amzica F, Lopes da Silva FH, 2011 Cellular substrates of brain rhythms, in: Schomer D, Lopes da Silva FH (Eds.), *Niedermeyer's Electroencephalography: Basic principles, clinical applications, and related fields*. Lippincott Williams & Wilkins, Philadelphia, pp. 33–63.
- Anderson BM, Stevens MC, Meda SA, Jordan K, Calhoun VD, Pearlson GD, 2011 Functional imaging of cognitive control during acute alcohol intoxication. *Alcohol Clin Exp Res* 35, 156–165. [PubMed: 20958334]
- Aron AR, Robbins TW, Poldrack RA, 2014 Inhibition and the right inferior frontal cortex: one decade on. *Trends Cogn Sci* 18, 177–185. [PubMed: 24440116]
- Baker SN, 2007 Oscillatory interactions between sensorimotor cortex and the periphery. *Curr Opin Neurobiol* 17, 649–655. [PubMed: 18339546]
- Baler RD, Volkow ND, 2006 Drug addiction: the neurobiology of disrupted self-control. *Trends Mol Med* 12, 559–566. [PubMed: 17070107]
- Basar E, Basar-Eroglu C, Karakas S, Schurmann M, 2001 Gamma, alpha, delta, and theta oscillations govern cognitive processes. *Int J Psychophysiol* 39, 241–248. [PubMed: 11163901]
- Beaton LE, Azma S, Marinkovic K, 2018 When the brain changes its mind: Oscillatory dynamics of conflict processing and response switching in a flanker task during alcohol challenge. *PLoS One* 13, e0191200. [PubMed: 29329355]
- Begleiter H, Porjesz B, 1999 What is inherited in the predisposition toward alcoholism? A proposed model *Alcohol Clin Exp Res* 23, 1125–1135. [PubMed: 10443977]
- Bouchery EE, Harwood HJ, Sacks JJ, Simon CJ, Brewer RD, 2011 Economic costs of excessive alcohol consumption in the U.S., 2006 *Am J Prev Med* 41, 516–524. [PubMed: 22011424]
- Brier MR, Ferree TC, Maguire MJ, Moore P, Spence J, Tillman GD, Hart J Jr., Kraut MA, 2010 Frontal theta and alpha power and coherence changes are modulated by semantic complexity in Go/NoGo tasks. *Int J Psychophysiol* 78, 215–224. [PubMed: 20696190]
- Buxton RB, 2002 *Introduction to Functional Magnetic Resonance Imaging*. Cambridge University Press, New York, NY.
- Cahalan D, Cisin IH, Crossley HM, 1969 *American drinking practices: A national study of drinking behavior and attitudes Monograph #6*. Rutgers Center of Alcohol Studies, New Brunswick, NJ.
- Cavanagh JF, Frank MJ, 2014 Frontal theta as a mechanism for cognitive control. *Trends Cogn Sci* 18, 414–421. [PubMed: 24835663]
- Cheyne D, Bakhtazad L, Gaetz W, 2006 Spatiotemporal mapping of cortical activity accompanying voluntary movements using an event-related beamforming approach. *Hum Brain Mapp* 27, 213–229. [PubMed: 16037985]
- Chikazoe J, Konishi S, Asari T, Jimura K, Miyashita Y, 2007 Activation of right inferior frontal gyrus during response inhibition across response modalities. *J Cogn Neurosci* 19, 69–80. [PubMed: 17214564]
- Clapp P, Bhave SV, Hoffman PL, 2008 How adaptation of the brain to alcohol leads to dependence: a pharmacological perspective. *Alcohol Res Health* 31, 310–339. [PubMed: 20729980]
- Cohen MX, Ridderinkhof KR, Haupt S, Elger CE, Fell J, 2008 Medial frontal cortex and response conflict: evidence from human intracranial EEG and medial frontal cortex lesion. *Brain Res* 1238, 127–142. [PubMed: 18760262]
- Correas A, Lopez-Caneda E, Beaton L, Rodriguez Holguin S, Garcia-Moreno LM, Anton-Toro LF, Cadaveira F, Maestu F, Marinkovic K, 2018 Decreased event-related theta power and phase-synchrony in young binge drinkers during target detection: An anatomically-constrained MEG approach. *J Psychopharmacol*, 269881118805498.
- Coutlee CG, Politzer CS, Hoyle RH, Huettel SA, 2014 An abbreviated impulsiveness scale constructed through confirmatory factor analysis of the Barratt Impulsiveness Scale version 11. *Archives of Scientific Psychology* 2, 1–12. [PubMed: 26258000]
- Crego A, Cadaveira F, Parada M, Corral M, Caamano-Isorna F, Rodriguez Holguin S, 2012 Increased amplitude of P3 event-related potential in young binge drinkers. *Alcohol* 46, 415–425. [PubMed: 22459872]
- Crego A, Holguin SR, Parada M, Mota N, Corral M, Cadaveira F, 2009 Binge drinking affects attentional and visual working memory processing in young university students. *Alcohol Clin Exp Res* 33, 1870–1879. [PubMed: 19673739]

- Crego A, Rodriguez-Holguin S, Parada M, Mota N, Corral M, Cadaveira F, 2010 Reduced anterior prefrontal cortex activation in young binge drinkers during a visual working memory task. *Drug Alcohol Depend* 109, 45–56. [PubMed: 20079980]
- Crews FT, Vetreno RP, Broadwater MA, Robinson DL, 2016 Adolescent Alcohol Exposure Persistently Impacts Adult Neurobiology and Behavior. *Pharmacol Rev* 68, 1074–1109. [PubMed: 27677720]
- Criaud M, Boulinguez P, 2013 Have we been asking the right questions when assessing response inhibition in go/no-go tasks with fMRI? A meta-analysis and critical review. *Neurosci Biobehav Rev* 37, 11–23. [PubMed: 23164813]
- Cuzon Carlson VC, Seabold GK, Helms CM, Garg N, Odagiri M, Rau AR, Daunais J, Alvarez VA, Lovinger DM, Grant KA, 2011 Synaptic and morphological neuroadaptations in the putamen associated with long-term, relapsing alcohol drinking in primates. *Neuropsychopharmacology* 36, 2513–2528. [PubMed: 21796110]
- Delorme A, Makeig S, 2004 EEGLAB: An open source toolbox for analysis of single-trial EEG dynamics. *Journal of Neuroscience Methods* 134, 9–21. [PubMed: 15102499]
- Dick DM, Li TK, Edenberg HJ, Hesselbrock V, Kramer J, Kuperman S, Porjesz B, Bucholz K, Goate A, Nurnberger J, Foroud T, 2004 A genome-wide screen for genes influencing conduct disorder. *Mol Psychiatry* 9, 81–86. [PubMed: 14699444]
- Engel AK, Fries P, 2010 Beta-band oscillations--signalling the status quo? *Curr Opin Neurobiol* 20, 156–165. [PubMed: 20359884]
- Erika-Florence M, Leech R, Hampshire A, 2014 A functional network perspective on response inhibition and attentional control. *Nature communications* 5, 4073.
- Eysenck HJ, Eysenck SBG, 1975 *Manual of the Eysenck Personality Questionnaire*. Hodder & Staughton, London.
- Field M, Schoenmakers T, Wiers RW, 2008 Cognitive processes in alcohol binges: a review and research agenda. *Curr Drug Abuse Rev* 1, 263–279. [PubMed: 19630725]
- Field M, Wiers RW, Christiansen P, Fillmore MT, Verster JC, 2010 Acute alcohol effects on inhibitory control and implicit cognition: implications for loss of control over drinking. *Alcohol Clin Exp Res* 34, 1346–1352. [PubMed: 20491732]
- Fillmore MT, 2003 Drug abuse as a problem of impaired control: current approaches and findings. *Behav Cogn Neurosci Rev* 2, 179–197. [PubMed: 15006292]
- Finn DA, Crabbe JC, 1997 Exploring alcohol withdrawal syndrome. *Alcohol Health Res World* 21, 149–156. [PubMed: 15704352]
- Finn P, 2000 Acute effects of alcohol on cognition and impulsive-disinhibited behavior, in: Noronha A, Eckardt M, Warren K (Eds.), *Review of NIAAA's neuroscience and behavioral research portfolio*, vol. 34 US Department of health and human services, Bethesda, MD, pp. 337–356.
- Frank MJ, 2006 Hold your horses: a dynamic computational role for the subthalamic nucleus in decision making. *Neural Netw* 19, 1120–1136. [PubMed: 16945502]
- Gan G, Guevara A, Marxen M, Neumann M, Junger E, Kobiella A, Mennigen E, Pilhatsch M, Schwarz D, Zimmermann US, Smolka MN, 2014 Alcohol-induced impairment of inhibitory control is linked to attenuated brain responses in right fronto-temporal cortex. *Biol Psychiatry* 76, 698–707. [PubMed: 24560581]
- Garavan H, Ross TJ, Stein EA, 1999 Right hemispheric dominance of inhibitory control: an event-related functional MRI study. *Proc Natl Acad Sci U S A* 96, 8301–8306. [PubMed: 10393989]
- Gershon RC, Wagster MV, Hendrie HC, Fox NA, Cook KF, Nowinski CJ, 2013 NIH toolbox for assessment of neurological and behavioral function. *Neurology* 80, S2–6. [PubMed: 23479538]
- Goldstein RZ, Volkow ND, 2002 Drug addiction and its underlying neurobiological basis: neuroimaging evidence for the involvement of the frontal cortex. *Am J Psychiatry* 159, 1642–1652. [PubMed: 12359667]
- Goldstein RZ, Volkow ND, 2011 Dysfunction of the prefrontal cortex in addiction: neuroimaging findings and clinical implications. *Nat Rev Neurosci* 12, 652–669. [PubMed: 22011681]
- Haber JR, Harris-Olenak B, Burroughs T, Jacob T, 2016 Residual Effects: Young Adult Diagnostic Drinking Predicts Late-Life Health Outcomes. *J Stud Alcohol Drugs* 77, 859–867. [PubMed: 27797686]

- Hampshire A, 2015 Putting the brakes on inhibitory models of frontal lobe function. *NeuroImage* 113, 340–355. [PubMed: 25818684]
- Hampshire A, Chamberlain SR, Monti MM, Duncan J, Owen AM, 2010 The role of the right inferior frontal gyrus: inhibition and attentional control. *Neuroimage* 50, 1313–1319. [PubMed: 20056157]
- Hanslmayr S, Pastotter B, Bauml KH, Gruber S, Wimber M, Klimesch W, 2008 The electrophysiological dynamics of interference during the Stroop task. *J Cogn Neurosci* 20, 215–225. [PubMed: 18275330]
- Haynes WI, Haber SN, 2013 The organization of prefrontal-subthalamic inputs in primates provides an anatomical substrate for both functional specificity and integration: implications for Basal Ganglia models and deep brain stimulation. *J Neurosci* 33, 4804–4814. [PubMed: 23486951]
- Heinz AJ, Beck A, Meyer-Lindenberg A, Sterzer P, Heinz A, 2011 Cognitive and neurobiological mechanisms of alcohol-related aggression. *Nat Rev Neurosci* 12, 400–413. [PubMed: 21633380]
- Hingson RW, Zha W, White AM, 2017 Drinking Beyond the Binge Threshold: Predictors, Consequences, and Changes in the U.S. *Am J Prev Med* 52, 717–727. [PubMed: 28526355]
- Hochberg Y, Benjamini Y, 1990 More powerful procedures for multiple significance testing. *Stat Med* 9, 811–818. [PubMed: 2218183]
- Hu S, Zhang S, Chao HH, Krystal JH, Li CSR, 2016 Association of drinking problems and duration of alcohol use to inhibitory control in nondependent young adult social drinkers. *Alcoholism: clinical and experimental research* 40, 319–328.
- Jenkinson N, Brown P, 2011 New insights into the relationship between dopamine, beta oscillations and motor function. *Trends Neurosci* 34, 611–618. [PubMed: 22018805]
- Jentsch JD, Taylor JR, 1999 Impulsivity resulting from frontostriatal dysfunction in drug abuse: implications for the control of behavior by reward-related stimuli. *Psychopharmacology (Berl)* 146, 373–390. [PubMed: 10550488]
- Kamarajan C, Porjesz B, Jones K, Chorlian D, Padmanabhapillai A, Rangaswamy M, Stimus A, Begleiter H, 2006 Event-related oscillations in offspring of alcoholics: neurocognitive disinhibition as a risk for alcoholism. *Biol Psychiatry* 59, 625–634. [PubMed: 16213472]
- Kamarajan C, Porjesz B, Jones KA, Choi K, Chorlian DB, Padmanabhapillai A, Rangaswamy M, Stimus AT, Begleiter H, 2004 The role of brain oscillations as functional correlates of cognitive systems: a study of frontal inhibitory control in alcoholism. *Int J Psychophysiol* 51, 155–180. [PubMed: 14693365]
- Kareken DA, Dzemidzic M, Wetherill L, Eiler W 2nd, Oberlin BG, Harezlak J, Wang Y, O'Connor SJ 2013 Family history of alcoholism interacts with alcohol to affect brain regions involved in behavioral inhibition. *Psychopharmacology (Berl)* 228, 335–345. [PubMed: 23468100]
- Khanna P, Carmena JM, 2017 Beta band oscillations in motor cortex reflect neural population signals that delay movement onset. *Elife* 6.
- Kilavik BE, Zaepffel M, Brovelli A, MacKay WA, Riehle A, 2013 The ups and downs of beta oscillations in sensorimotor cortex. *Exp Neurol* 245, 15–26. [PubMed: 23022918]
- Kimbrough A, Kim S, Cole M, Brennan M, George O, 2017 Intermittent Access to Ethanol Drinking Facilitates the Transition to Excessive Drinking After Chronic Intermittent Ethanol Vapor Exposure. *Alcohol Clin Exp Res* 41, 1502–1509. [PubMed: 28679148]
- Koob GF, 2013 Theoretical frameworks and mechanistic aspects of alcohol addiction: alcohol addiction as a reward deficit disorder. *Curr Top Behav Neurosci* 13, 3–30. [PubMed: 21744309]
- Koob GF, Le Moal M, 2005 Plasticity of reward neurocircuitry and the 'dark side' of drug addiction. *Nat Neurosci* 8, 1442–1444. [PubMed: 16251985]
- Koob GF, Le Moal M, 2008a Addiction and the brain antireward system. *Annu Rev Psychol* 59, 29–53. [PubMed: 18154498]
- Koob GF, Le Moal M, 2008b Review. Neurobiological mechanisms for opponent motivational processes in addiction. *Philos Trans R Soc Lond B Biol Sci* 363, 3113–3123. [PubMed: 18653439]
- Koob GF, Volkow ND, 2010 Neurocircuitry of addiction. *Neuropsychopharmacology* 35, 217–238. [PubMed: 19710631]
- Kovacevic S, Azma S, Irimia A, Sherfey J, Halgren E, Marinkovic K, 2012 Theta oscillations are sensitive to both early and late conflict processing stages: effects of alcohol intoxication. *PLoS One* 7, e43957. [PubMed: 22952823]

- Kroenke K, Spitzer RL, 2002 The PHQ-9: a new depression diagnostic and severity measure. *Psychiatric annals* 32, 509–515.
- Kuntsche E, Kuntsche S, 2009 Development and validation of the Drinking Motive Questionnaire Revised Short Form (DMQ-R SF). *J Clin Child Adolesc Psychol* 38, 899–908. [PubMed: 20183672]
- Kwako LE, Momenan R, Litten RZ, Koob GF, Goldman D, 2016 Addictions Neuroclinical Assessment: A Neuroscience-Based Framework for Addictive Disorders. *Biol Psychiatry* 80, 179–189. [PubMed: 26772405]
- Lanciego JL, Luquin N, Obeso JA, 2012 Functional neuroanatomy of the basal ganglia. *Cold Spring Harb Perspect Med* 2, a009621. [PubMed: 23071379]
- Lange JE, Voas RB, 2001 Defining binge drinking quantities through resulting blood alcohol concentrations. *Psychol Addict Behav* 15, 310–316. [PubMed: 11767262]
- Laukkanen V, Storkvik M, Hakkinen M, Akamine Y, Tupala E, Virkkunen M, Tiihonen J, 2013 Decreased GABA(A) benzodiazepine binding site densities in postmortem brains of Cloninger type 1 and 2 alcoholics. *Alcohol* 47, 103–108. [PubMed: 23332316]
- Le Berre AP, Fama R, Sullivan EV, 2017 Executive Functions, Memory, and Social Cognitive Deficits and Recovery in Chronic Alcoholism: A Critical Review to Inform Future Research. *Alcohol Clin Exp Res* 41, 1432–1443. [PubMed: 28618018]
- Leeman RF, Patock-Peckham JA, Potenza MN, 2012 Impaired control over alcohol use: An under-addressed risk factor for problem drinking in young adults? *Exp Clin Psychopharmacol* 20, 92–106. [PubMed: 22182417]
- Levy BJ, Wagner AD, 2011 Cognitive control and right ventrolateral prefrontal cortex: reflexive reorienting, motor inhibition, and action updating. *Ann N Y Acad Sci* 1224, 40–62. [PubMed: 21486295]
- Littlefield AK, Stevens AK, Sher KJ, 2014 Impulsivity and Alcohol Involvement: Multiple, Distinct Constructs and Processes. *Curr Addict Rep* 1, 33–40. [PubMed: 29963362]
- Litvak V, Jha A, Eusebio A, Oostenveld R, Foltynie T, Limousin P, Zrinzo L, Hariz MI, Friston K, Brown P, 2011 Resting oscillatory cortico-subthalamic connectivity in patients with Parkinson's disease. *Brain* 134, 359–374. [PubMed: 21147836]
- Lopez-Caneda E, Cadaveira F, Crego A, Doallo S, Corral M, Gomez-Suarez A, Rodriguez Holguin S, 2013 Effects of a persistent binge drinking pattern of alcohol consumption in young people: a follow-up study using event-related potentials. *Alcohol Alcohol* 48, 464–471. [PubMed: 23695975]
- Lopez-Caneda E, Cadaveira F, Crego A, Gomez-Suarez A, Corral M, Parada M, Caamano-Isorna F, Rodriguez Holguin S, 2012 Hyperactivation of right inferior frontal cortex in young binge drinkers during response inhibition: a follow-up study. *Addiction* 107, 1796–1808. [PubMed: 22487028]
- Lopez-Caneda E, Rodriguez Holguin S, Correias A, Carbia C, Gonzalez-Villar A, Maestu F, Cadaveira F, 2017 Binge drinking affects brain oscillations linked to motor inhibition and execution. *J Psychopharmacol* 31, 873–882. [PubMed: 28168896]
- Luijten M, Machielsen MW, Veltman DJ, Hester R, de Haan L, Franken IH, 2014 Systematic review of ERP and fMRI studies investigating inhibitory control and error processing in people with substance dependence and behavioural addictions. *J Psychiatry Neurosci* 39, 149–169. [PubMed: 24359877]
- Lundqvist M, Herman P, Miller EK, 2018 Working Memory: Delay Activity, Yes! Persistent Activity? Maybe Not. *J Neurosci* 38, 7013–7019.
- Marinkovic K, Beaton LE, Rosen BQ, Happer JP, Wagner LC, 2019 Disruption of Frontal Lobe Neural Synchrony During Cognitive Control by Alcohol Intoxication. *J Vis Exp*.
- Marinkovic K, Halgren E, Klopp J, Maltzman I, 2000 Alcohol effects on movement-related potentials: a measure of impulsivity? *J Stud Alcohol* 61, 24–31. [PubMed: 10627093]
- Marinkovic K, Rickenbacher E, Azma S, Artsy E, 2012a Acute alcohol intoxication impairs top-down regulation of Stroop incongruity as revealed by blood oxygen level-dependent functional magnetic resonance imaging. *Hum Brain Mapp* 33, 319–333. [PubMed: 21391268]

- Marinkovic K, Rickenbacher E, Azma S, Artsy E, Lee AK, 2013 Effects of acute alcohol intoxication on saccadic conflict and error processing. *Psychopharmacology (Berl)* 230, 487–497. [PubMed: 23812762]
- Marinkovic K, Rosen BQ, Cox B, Kovacevic S, 2012b Event-related theta power during lexical-semantic retrieval and decision conflict is modulated by alcohol intoxication: Anatomically-constrained MEG. *Frontiers in Psychology* 3.
- Maurage P, Pesenti M, Philippot P, Joassin F, Campanella S, 2009 Latent deleterious effects of binge drinking over a short period of time revealed only by electrophysiological measures. *J Psychiatry Neurosci* 34, 111–118. [PubMed: 19270761]
- Most D, Ferguson L, Harris RA, 2014 Molecular basis of alcoholism. *Handb Clin Neurol* 125, 89–111. [PubMed: 25307570]
- Naimi TS, Nelson DE, Brewer RD, 2010 The intensity of binge alcohol consumption among U.S. adults. *Am J Prev Med* 38, 201–207. [PubMed: 20117577]
- Nambu A, Tokuno H, Takada M, 2002 Functional significance of the cortico-subthalamo-pallidal ‘hyperdirect’ pathway. *Neurosci Res* 43, 111–117. [PubMed: 12067746]
- National Institute on Alcohol Abuse and Alcoholism, 2017 Drinking levels defined.
- Nigg JT, Wong MM, Martel MM, Jester JM, Puttler LI, Glass JM, Adams KM, Fitzgerald HE, Zucker RA, 2006 Poor response inhibition as a predictor of problem drinking and illicit drug use in adolescents at risk for alcoholism and other substance use disorders. *J Am Acad Child Adolesc Psychiatry* 45, 468–475. [PubMed: 16601652]
- Nikolaou K, Critchley H, Duka T, 2013 Alcohol affects neuronal substrates of response inhibition but not of perceptual processing of stimuli signalling a stop response. *PLoS One* 8, e76649. [PubMed: 24086758]
- Nunez PL, Srinivasan R, 2006 *Electric fields of the brain: The neurophysics of EEG*. Oxford University Press, New York.
- Oldfield RC, 1971 The assessment and analysis of handedness: the Edinburgh inventory. *Neuropsychologia* 9, 97–113. [PubMed: 5146491]
- Oostenveld R, Fries P, Maris E, Schoffelen JM, 2011 FieldTrip: Open source software for advanced analysis of MEG, EEG, and invasive electrophysiological data. *Comput Intell Neurosci* 2011, 156869.
- Oscar-Berman M, Marinkovic K, 2004 Alcoholism and the brain: An overview. *Alcohol Research and Health* 27, 125–133.
- Oscar-Berman M, Marinkovic K, 2007 Alcohol: effects on neurobehavioral functions and the brain. *Neuropsychol Rev* 17, 239–257. [PubMed: 17874302]
- Pandey AK, Kamarajan C, Manz N, Chorlian DB, Stimus A, Porjesz B, 2016 Delta, theta, and alpha event-related oscillations in alcoholics during Go/NoGo task: Neurocognitive deficits in execution, inhibition, and attention processing. *Prog Neuropsychopharmacol Biol Psychiatry* 65, 158–171. [PubMed: 26456730]
- Paz AL, Rosselli M, Conniff J, 2018 Identifying Inhibitory Subcomponents Associated with Changes in Binge Drinking Behavior: A 6-Month Longitudinal Design. *Alcohol Clin Exp Res* 42, 1815–1822. [PubMed: 29969149]
- Petit G, Kornreich C, Maurage P, Noel X, Letesson C, Verbanck P, Campanella S, 2012 Early attentional modulation by alcohol-related cues in young binge drinkers: an event-related potentials study. *Clin Neurophysiol* 123, 925–936. [PubMed: 22119177]
- Pfurtscheller G, Lopes da Silva FH, 1999 Event-related EEG/MEG synchronization and desynchronization: basic principles. *Clin Neurophysiol* 110, 1842–1857. [PubMed: 10576479]
- Pihl RO, Peterson JB, Lau MA, 1993 A biosocial model of the alcohol-aggression relationship. *J Stud Alcohol Suppl* 11, 128–139. [PubMed: 8410954]
- Pogosyan A, Gaynor LD, Eusebio A, Brown P, 2009 Boosting cortical activity at Beta-band frequencies slows movement in humans. *Curr Biol* 19, 1637–1641. [PubMed: 19800236]
- Raghavachari S, Kahana MJ, Rizzuto DS, Caplan JB, Kirschen MP, Bourgeois B, Madsen JR, Lisman JE, 2001 Gating of human theta oscillations by a working memory task. *J Neurosci* 21, 3175–3183. [PubMed: 11312302]

- Rangaswamy M, Jones KA, Porjesz B, Chorlian DB, Padmanabhapillai A, Kamarajan C, Kuperman S, Rohrbach J, O'Connor SJ, Bauer LO, Schuckit MA, Begleiter H, 2007 Delta and theta oscillations as risk markers in adolescent offspring of alcoholics. *Int J Psychophysiol* 63, 3–15. [PubMed: 17129626]
- Read JP, Kahler CW, Strong DR, Colder CR, 2006 Development and preliminary validation of the young adult alcohol consequences questionnaire. *J Stud Alcohol* 67, 169–177. [PubMed: 16536141]
- Regier DA, Farmer ME, Rae DS, Locke BZ, Keith SJ, Judd LL, Goodwin FK, 1990 Comorbidity of mental disorders with alcohol and other drug abuse. Results from the Epidemiologic Catchment Area (ECA) Study [see comments]. *JAMA* 264, 2511–2518. [PubMed: 2232018]
- Roberto M, Varodayan FP, 2017 Synaptic targets: Chronic alcohol actions. *Neuropharmacology* 122, 85–99. [PubMed: 28108359]
- Rosen BQ, Padovan N, Marinkovic K, 2016 Alcohol hits you when it is hard: Intoxication, task difficulty, and theta brain oscillations. *Alcohol Clin Exp Res* 40, 743–752. [PubMed: 27012442]
- Sacks JJ, Gonzales KR, Bouchery EE, Tomedi LE, Brewer RD, 2015 2010 National and State Costs of Excessive Alcohol Consumption. *Am J Prev Med* 49, e73–e79. [PubMed: 26477807]
- Salvatore JE, Gottesman II, Dick DM, 2015 Endophenotypes for Alcohol Use Disorder: An Update on the Field. *Curr Addict Rep* 2, 76–90. [PubMed: 26236574]
- Schuckit MA, Smith TL, Kalmijn J, 2004 The search for genes contributing to the low level of response to alcohol: patterns of findings across studies. *Alcohol Clin Exp Res* 28, 1449–1458. [PubMed: 15597076]
- Schuckit MA, Smith TL, Tipp JE, 1997 The Self-Rating of the Effects of alcohol (SRE) form as a retrospective measure of the risk for alcoholism. *Addiction* 92, 979–988. [PubMed: 9376780]
- Schuckit MA, Tapert S, Matthews SC, Paulus MP, Tolentino NJ, Smith TL, Trim RS, Hall S, Simmons A, 2012 fMRI differences between subjects with low and high responses to alcohol during a stop signal task. *Alcohol Clin Exp Res* 36, 130–140. [PubMed: 22003983]
- Selzer ML, Vinokur A, Van Rooijen L, 1975 A self-administered Short Michigan Alcoholism Screening Test (SMAST). *Journal of Studies on Alcohol* 36, 117–126. [PubMed: 238068]
- Sher KJ, Trull TJ, 1994 Personality and disinhibitory psychopathology: alcoholism and antisocial personality disorder. *J Abnorm Psychol* 103, 92–102. [PubMed: 8040486]
- Simmonds DJ, Pekar JJ, Mostofsky SH, 2008 Meta-analysis of Go/No-go tasks demonstrating that fMRI activation associated with response inhibition is task-dependent. *Neuropsychologia* 46, 224–232. [PubMed: 17850833]
- Sobell L, Sobell M, 1996 Timeline followback users' manual for alcohol use. Toronto, Canada: Addiction Research Foundation.
- Solis-Escalante T, Muller-Putz GR, Pfuertscheller G, Neuper C, 2012 Cue-induced beta rebound during withholding of overt and covert foot movement. *Clin Neurophysiol* 123, 1182–1190. [PubMed: 22349305]
- Spitzer RL, Kroenke K, Williams JB, Löwe B, 2006 A brief measure for assessing generalized anxiety disorder: the GAD-7. *Archives of internal medicine* 166, 1092–1097. [PubMed: 16717171]
- Sullivan EV, Pfefferbaum A, 2005 Neurocircuitry in alcoholism: a substrate of disruption and repair. *Psychopharmacology (Berl)* 180, 583–594. [PubMed: 15834536]
- Swann N, Tandon N, Canolty R, Ellmore TM, McEvoy LK, Dreyer S, DiSano M, Aron AR, 2009 Intracranial EEG reveals a time- and frequency-specific role for the right inferior frontal gyrus and primary motor cortex in stopping initiated responses. *J Neurosci* 29, 12675–12685. [PubMed: 19812342]
- Swick D, Ashley V, Turken U, 2011 Are the neural correlates of stopping and not going identical? Quantitative meta-analysis of two response inhibition tasks. *Neuroimage* 56, 1655–1665. [PubMed: 21376819]
- Terry-McElrath YM, Patrick ME, 2016 Intoxication and binge and high-intensity drinking among US young adults in their mid-20s. *Subst Abus* 37, 597–605. [PubMed: 27092592]
- Tunstall MJ, Oorschot DE, Kean A, Wickens JR, 2002 Inhibitory interactions between spiny projection neurons in the rat striatum. *J Neurophysiol* 88, 1263–1269. [PubMed: 12205147]

- Vengeliene V, Bilbao A, Molander A, Spanagel R, 2008 Neuropharmacology of alcohol addiction. *Br J Pharmacol* 154, 299–315. [PubMed: 18311194]
- Verdejo-Garcia A, Lawrence AJ, Clark L, 2008 Impulsivity as a vulnerability marker for substance-use disorders: review of findings from high-risk research, problem gamblers and genetic association studies. *Neurosci Biobehav Rev* 32, 777–810. [PubMed: 18295884]
- Volkow ND, Fowler JS, Wang GJ, Goldstein RZ, 2002 Role of dopamine, the frontal cortex and memory circuits in drug addiction: insight from imaging studies. *Neurobiol Learn Mem* 78, 610–624. [PubMed: 12559839]
- Wang C, Ulbert I, Schomer DL, Marinkovic K, Halgren E, 2005 Responses of human anterior cingulate cortex microdomains to error detection, conflict monitoring, stimulus-response mapping, familiarity, and orienting. *J Neurosci* 25, 604–613. [PubMed: 15659596]
- Wessel JR, 2018 Prepotent motor activity and inhibitory control demands in different variants of the go/no-go paradigm. *Psychophysiology* 55.
- Wessel JR, Aron AR, 2017 On the Globality of Motor Suppression: Unexpected Events and Their Influence on Behavior and Cognition. *Neuron* 93, 259–280. [PubMed: 28103476]
- Wiecki TV, Frank MJ, 2013 A computational model of inhibitory control in frontal cortex and basal ganglia. *Psychol Rev* 120, 329–355. [PubMed: 23586447]
- Wilcox MV, Cuzon Carlson VC, Sherazee N, Sprow GM, Bock R, Thiele TE, Lovinger DM, Alvarez VA, 2014 Repeated binge-like ethanol drinking alters ethanol drinking patterns and depresses striatal GABAergic transmission. *Neuropsychopharmacology* 39, 579–594. [PubMed: 23995582]
- Yamanaka K, Yamamoto Y, 2010 Single-trial EEG Power and Phase Dynamics Associated with Voluntary Response Inhibition. *Journal of Cognitive Neuroscience* 22, 714–727. [PubMed: 19413474]
- Zavala B, Zaghoul K, Brown P, 2015 The subthalamic nucleus, oscillations, and conflict. *Mov Disord* 30, 328–338. [PubMed: 25688872]

Highlights

- Binge (BDs) and light drinkers (LDs) do not differ in Go/NoGo performance
- No group differences on cognition, personality; higher sensation seeking in BDs
- Inhibitory NoGo trials evoke much greater event-related theta power than Go trials
- Theta power is lower to NoGo trials in BDs and it correlates with drinking
- Early beta decrease in BDs may indicate greater response readiness

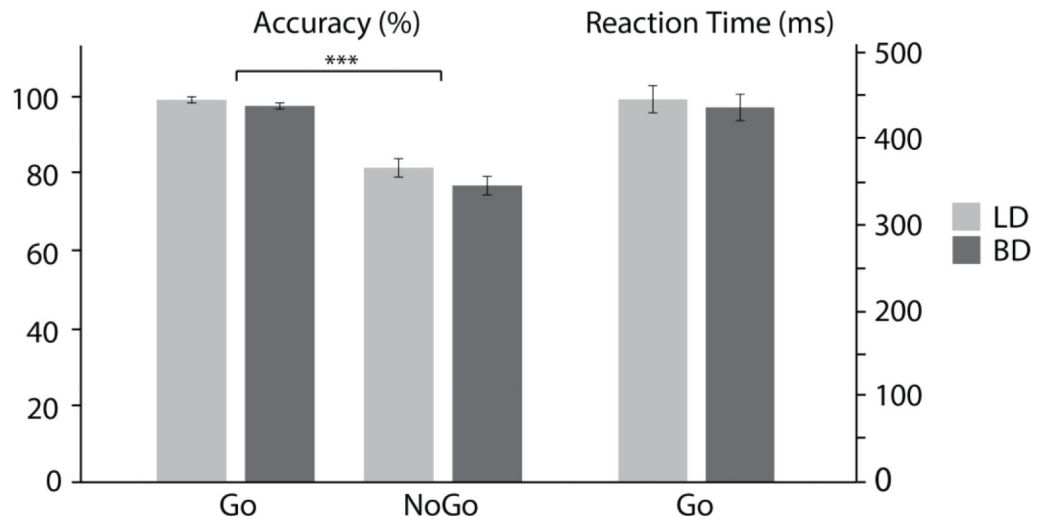


Figure 1. Accuracy and reaction times (means \pm standard errors) are shown for the low drinking (LD) and binge drinking (BD) groups and for the Go and NoGo conditions.

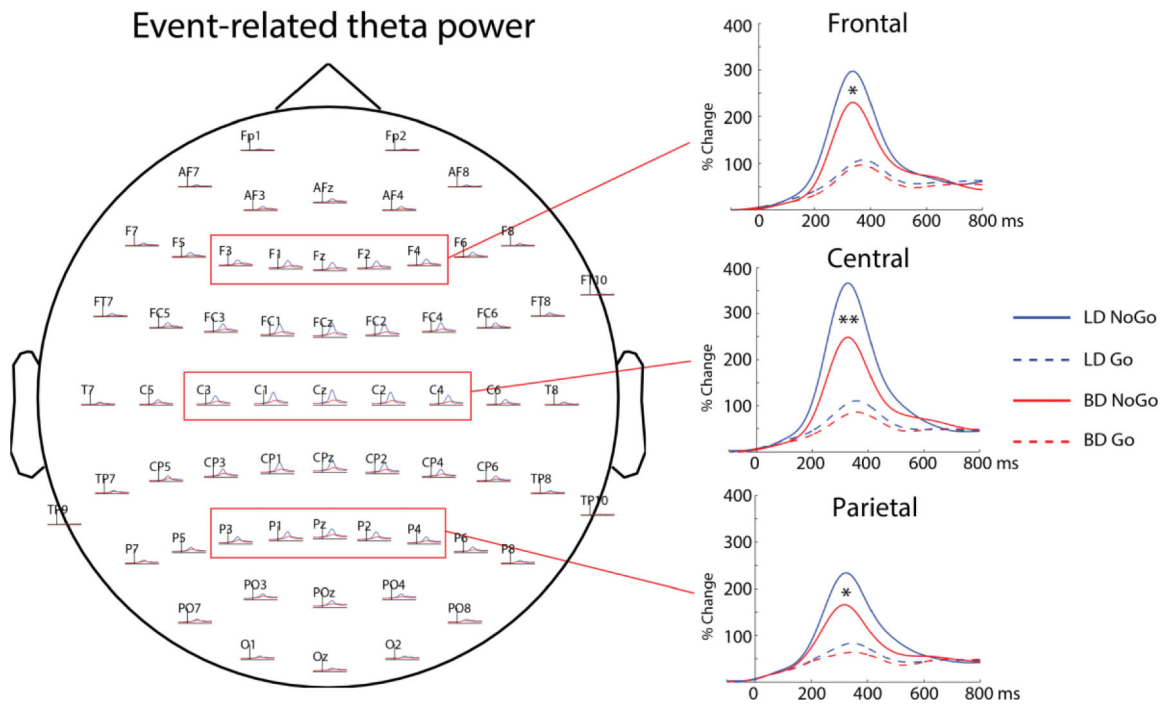


Figure 2. Frontal, central, and parietal electrode clusters and group average time courses for event-related theta power averaged within each cluster. Overall, event-related theta power was greater on NoGo trials, it peaked at ~350 ms, and it was most prominent in the central region. BD participants had reduced NoGo theta power in all three regions compared to LDs. * $p < .05$, ** $p < .01$

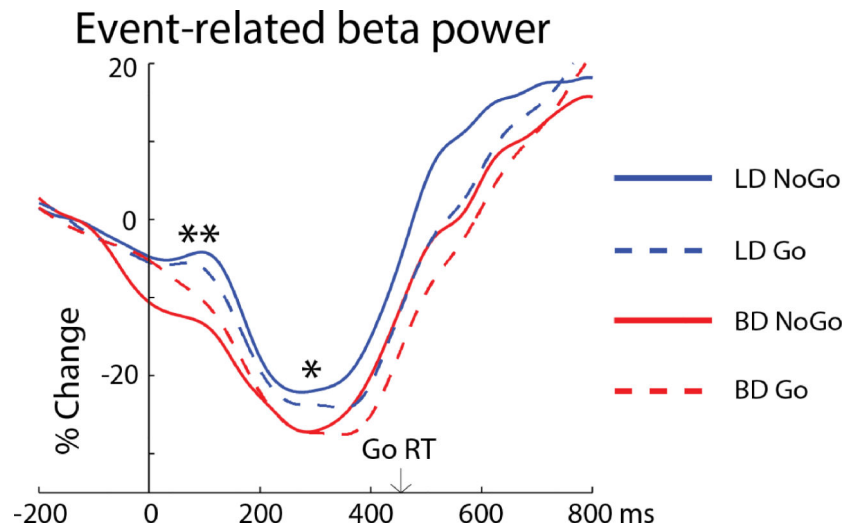


Figure 3. Event-related beta power time course averaged over the central electrode cluster. LD participants show an early, transient increase in beta power (50 – 125 ms). * $p < .05$, ** $p < .01$. Average Go reaction time is marked by arrow.

Table 1.

Participant characteristics. For each group, means \pm standard deviations are included for each variable. Group comparisons are expressed as Mann-Whitney U -values or χ^2 (marked with ¹).

	BD (n = 29)	LD (n = 32)	Statistical Value	<i>p</i>
Age	23.41 \pm 3.5	23.41 \pm 3.4	460	.954
% Female	51.7%	50%	.015 ¹	.903
White/Non-Hispanic	65.5%	71.9%	.067 ¹	.796
Family history of alcoholism	55%	44%	.403 ¹	.526
Undergraduate GPA	3.13 \pm .5	3.44 \pm .4	277	< .05
Education years	15.79 \pm 2	16 \pm 2	416	.483
In the past six months				
Binge episodes	14.09 \pm 13.6	.09 \pm .3	0	< .001
Blackouts	4.66 \pm 3.7	.03 \pm .2	2.5	< .001
Drinking days/week	3.21 \pm 1.3	1.66 \pm .8	135.5	< .001
Drinks per occasion	5.52 \pm 1.5	1.81 \pm .9	18.5	< .001
Drinks consumed per week	17.72 \pm 8.6	3.27 \pm 2.3	27.5	< .001
Age of first drink	17.25 \pm 2.2	18.45 \pm 2.1	163.5	< .001
Max. number of drinks in 24 hrs	12.09 \pm 5.7	4.73 \pm 2.2	32	< .001
No. times felt drunk past month	5.74 \pm 4.8	2.00 \pm 1.7	157	< .001
Consequences of alcohol (YAACQ)	11.07 \pm 5.3	2 \pm 1.9	41	< .001
Alcoholism-related symptoms (SMAST)	3.36 \pm 3.3	.56 \pm .9	202	< .001
Drinking motives (DMQ)	1.99 \pm .4	1.64 \pm .3	192	< .001
Anxiety (GAD)	4.61 \pm 5.4	2.38 \pm 3.2	326.5	.065
Depression (PHQ)	4.86 \pm 5	2.13 \pm 2	322.5	.059
Impulsivity (ABIS)	2.06 \pm .5	1.83 \pm .3	319	.055
Sensation Seeking (BSSS)	3.75 \pm .7	3.39 \pm .7	309.5	< .05
EPQ				
Neuroticism	3.86 \pm 3.52	3.44 \pm 3.34	411.5	.585
Psychoticism	2.54 \pm 2.12	2.28 \pm 1.63	428	.763
Extraversion	9.43 \pm 2.43	8.22 \pm 3.5	371	.248
NIH Toolbox				
Working Memory	0.76 \pm 0.10	0.74 \pm 0.11	400.5	.353
Dimensional Shift	0.87 \pm 0.14	0.92 \pm 0.05	349	.097
Processing Speed	0.58 \pm 0.07	0.6 \pm 0.09	382	.236
Episodic Memory	0.78 \pm 0.17	0.8 \pm 0.15	395	.550