



# Computed Tomography Severity Index vs. Other Indices in the Prediction of Severity and Mortality in Acute Pancreatitis: A Predictive Accuracy Meta-analysis

Alexandra Mikó<sup>1†</sup>, Éva Vigh<sup>2,3†</sup>, Péter Mátrai<sup>1,4,5</sup>, Alexandra Soós<sup>1,4</sup>, András Garami<sup>1</sup>, Márta Balaskó<sup>1</sup>, László Czakó<sup>6</sup>, Bernadett Mosdósi<sup>7</sup>, Patrícia Sarlós<sup>8</sup>, Bálint Eröss<sup>1</sup>, Judit Tenk<sup>1</sup>, Ildikó Rostás<sup>1</sup> and Péter Hegyi<sup>1,9,10\*</sup>

## OPEN ACCESS

### Edited by:

Richard T. Waldron,  
Cedars-Sinai Medical Center,  
United States

### Reviewed by:

Zilvinas Dambrauskas,  
Lithuanian University of Health  
Sciences, Lithuania  
Christopher Halloran,  
University of Liverpool,  
United Kingdom

### \*Correspondence:

Péter Hegyi  
hegyi2009@gmail.com

†These authors have contributed  
equally to this work

### Specialty section:

This article was submitted to  
Gastrointestinal Sciences,  
a section of the journal  
Frontiers in Physiology

Received: 04 June 2019

Accepted: 19 July 2019

Published: 27 August 2019

### Citation:

Mikó A, Vigh É, Mátrai P, Soós A,  
Garami A, Balaskó M, Czakó L,  
Mosdósi B, Sarlós P, Eröss B, Tenk J,  
Rostás I and Hegyi P (2019)  
Computed Tomography Severity Index  
vs. Other Indices in the Prediction of  
Severity and Mortality in Acute  
Pancreatitis: A Predictive Accuracy  
Meta-analysis.  
Front. Physiol. 10:1002.  
doi: 10.3389/fphys.2019.01002

<sup>1</sup> Institute for Translational Medicine, Medical School, University of Pécs, Pécs, Hungary, <sup>2</sup> Department of Radiology, Medical School, University of Pécs, Pécs, Hungary, <sup>3</sup> Department of Central Radiology, Markusovszky University Teaching Hospital, Szombathely, Hungary, <sup>4</sup> Clinical Medicine Doctoral School, University of Szeged, Szeged, Hungary, <sup>5</sup> Institute of Bioanalysis, Medical School, University of Pécs, Pécs, Hungary, <sup>6</sup> Department of Pathophysiology, University of Szeged, Szeged, Hungary, <sup>7</sup> Department of Paediatrics, Medical School, University of Pécs, Pécs, Hungary, <sup>8</sup> Division of Gastroenterology, First Department of Medicine, Medical School, University of Pécs, Pécs, Hungary, <sup>9</sup> Division of Translational Medicine, First Department of Medicine, University of Pécs, Pécs, Hungary, <sup>10</sup> Hungarian Academy of Sciences, University of Szeged Momentum Gastroenterology Multidisciplinary Research Group, Szeged, Hungary

**Background:** The management of the moderate and severe forms of acute pancreatitis (AP) with necrosis and multiorgan failure remains a challenge. To predict the severity and mortality of AP multiple clinical, laboratory-, and imaging-based scoring systems are available.

**Aim:** To investigate, if the computed tomography severity index (CTSI) can predict the outcomes of AP better than other scoring systems.

**Methods:** A systematic search was performed in three databases: Pubmed, Embase, and the Cochrane Library. Eligible records provided data from consecutive AP cases and used CTSI or modified CTSI (mCTSI) alone or in combination with other prognostic scores [Ranson, bedside index of severity in acute pancreatitis (BISAP), Acute Physiology, and Chronic Health Examination II (APACHE II), C-reactive protein (CRP)] for the evaluation of severity or mortality of AP. Area under the curves (AUCs) with 95% confidence intervals (CIs) were calculated and aggregated with STATA 14 software using the metandi module.

**Results:** Altogether, 30 studies were included in our meta-analysis, which contained the data of 5,988 AP cases. The pooled AUC for the prediction of mortality was 0.79 (CI 0.73–0.86) for CTSI; 0.87 (CI 0.83–0.90) for BISAP; 0.80 (CI 0.72–0.89) for mCTSI; 0.73 (CI 0.66–0.81) for CRP level; 0.87 (CI 0.81–0.92) for the Ranson score; and 0.91 (CI 0.88–0.93) for the APACHE II score. The APACHE II scoring system had significantly higher predictive value for mortality than CTSI and CRP ( $p = 0.001$  and  $p < 0.001$ , respectively), while the predictive value of CTSI was not statistically different from that of BISAP, mCTSI, CRP, or Ranson criteria. The AUC for the prediction of severity of AP were 0.80 (CI 0.76–0.85) for CTSI; 0.79, (CI 0.72–0.86) for BISAP; 0.83 (CI 0.75–0.91)

for mCTSI; 0.73 (CI 0.64–0.83) for CRP level; 0.81 (CI 0.75–0.87) for Ranson score and 0.80 (CI 0.77–0.83) for APACHE II score. Regarding severity, all tools performed equally.

**Conclusion:** Though APACHE II is the most accurate predictor of mortality, CTSI is a good predictor of both mortality and AP severity. When the CT scan has been performed, CTSI is an easily calculable and informative tool, which should be used more often in routine clinical practice.

**Keywords:** acute pancreatitis, CT-severity index, accuracy, severity, mortality

## INTRODUCTION

### Rationale

Acute pancreatitis (AP) is an inflammatory disease of the pancreas, one of the most common causes of hospitalization among gastrointestinal diseases (Lankisch et al., 2015). Based on the revised Atlanta classification, the severity of AP may be mild, moderate, or severe (Banks et al., 2013). Most cases of AP are mild, but the management of the moderate and severe forms of the disease with necrosis and multiorgan failure remains a challenge. The prognosis of the severe form is poor, it occurs in 8.8% of AP (Parniczky et al., 2016) and the mortality of severe AP (SAP) may reach 28% (Parniczky et al., 2016). Therefore, it is necessary to predict the severity of the disease because the early escalation of care and aggressive therapy may prevent complications and adverse outcomes of AP in high-risk patients. Unfortunately, research on pancreatitis is in danger, therefore, attempts to obtain clinically relevant data has very high importance (Szentesi et al., 2016).

### Objectives

Currently, there are various scoring systems used for the early prediction of SAP. First, the Ranson score was used (Ranson and Pasternack, 1977), but later the acute physiology and chronic health examination II (APACHE II) scoring system seemed to be more accurate (Yeung et al., 2006). Moreover, several inflammatory parameters such as C-reactive protein (CRP) and interleukin-6 were documented to be clinically relevant in the differentiation of mild and non-mild AP (Sternby et al., 2017). In 2008, a new, easy-to-implement bedside index of severity in acute pancreatitis (BISAP) was proposed for use within 24 h of hospitalization to predict in-hospital mortality (Wu et al., 2008). However, with the improvements of the imaging techniques, contrast-enhanced computed tomography (CT) gets an important place in the diagnosis of AP and its complications. In the early '90s, Balthazar and his coworkers developed a numerical scoring system, the CT severity index (CTSI), for the estimation of the severity of AP (Balthazar et al., 1990). It combines the quantification of pancreatic and peripancreatic inflammation with the extent of pancreatic parenchymal necrosis. In 2004, Mortelet et al., formulated the modified CTSI (mCTSI) including a simplified evaluation of peripancreatic inflammation and extent of pancreatic parenchymal necrosis and incorporated the extrapancreatic complications (vascular, gastrointestinal, and extrapancreatic parenchymal complications as well as the presence of pleural effusion and/or ascites) in

the assessment. This modified index correlated more with the outcome of AP (Mortelet et al., 2004). **Tables 1A,B** show the components of CTSI and mCTSI.

### Research Question

It is still not clear, which scoring system has the highest predictive accuracy for severity and mortality of AP. The aim of this meta-analysis was to investigate, how accurate CT-based severity indices are in the prediction of the severity and mortality of AP in comparison with other widely accepted and used scoring systems.

**TABLE 1 |** Components of the CTSI and mCTSI.

#### (A) Components of the CTSI

|  |   |
|--|---|
| Pancreatic inflammation  |   |
| Normal pancreas  | 0 |
| Focal or diffuse enlargement of the pancreas   | 1 |
| Intrinsic pancreatic abnormalities with inflammatory changes in peripancreatic fat       | 2 |
| Single, ill-defined fluid collection or phlegmon   | 3 |
| Two or more poorly defined collections or presence of gas in or adjacent to the pancreas | 4 |
| Pancreatic necrosis  |   |
| None   | 0 |
| ≤30%   | 2 |
| >30% and ≤50%  | 4 |
| >50%   | 6 |

#### (B) Components of the mCTSI

|   |   |
|---|---|
| Pancreatic inflammation   |   |
| Normal pancreas   | 0 |
| Intrinsic pancreatic abnormalities with peripancreatic inflammatory changes   | 2 |
| Pancreatic or peripancreatic fluid collection or peripancreatic fat necrosis  | 4 |
| Pancreatic necrosis   |   |
| None  | 0 |
| Less 30%  | 2 |
| >30%  | 4 |
| Extrapancreatic complications   |   |
| Pleural effusion, ascites, vascular complication (venous thrombosis, arterial hemorrhage, pseudoaneurysm), parenchymal complication (infarction, hemorrhage, subcapsular fluid collection), GI involvement (inflammation, perforation, intraluminal fluid collection) | 2 |

## METHODS

### Study Design, Participants, Interventions, Comparators

The systematic search was conducted according to the Preferred Reporting Items for Systematic Reviews and Meta-Analyses (PRISMA) Statement (Moher et al., 2009) (**Supplementary Document 1**). We included studies on AP that used CTSI or mCTSI (index test) and compared them to any of the other scoring systems (Ranson, BISAP, APACHE II) or CRP (reference standards) in terms of their predictive value.

### Search Strategy

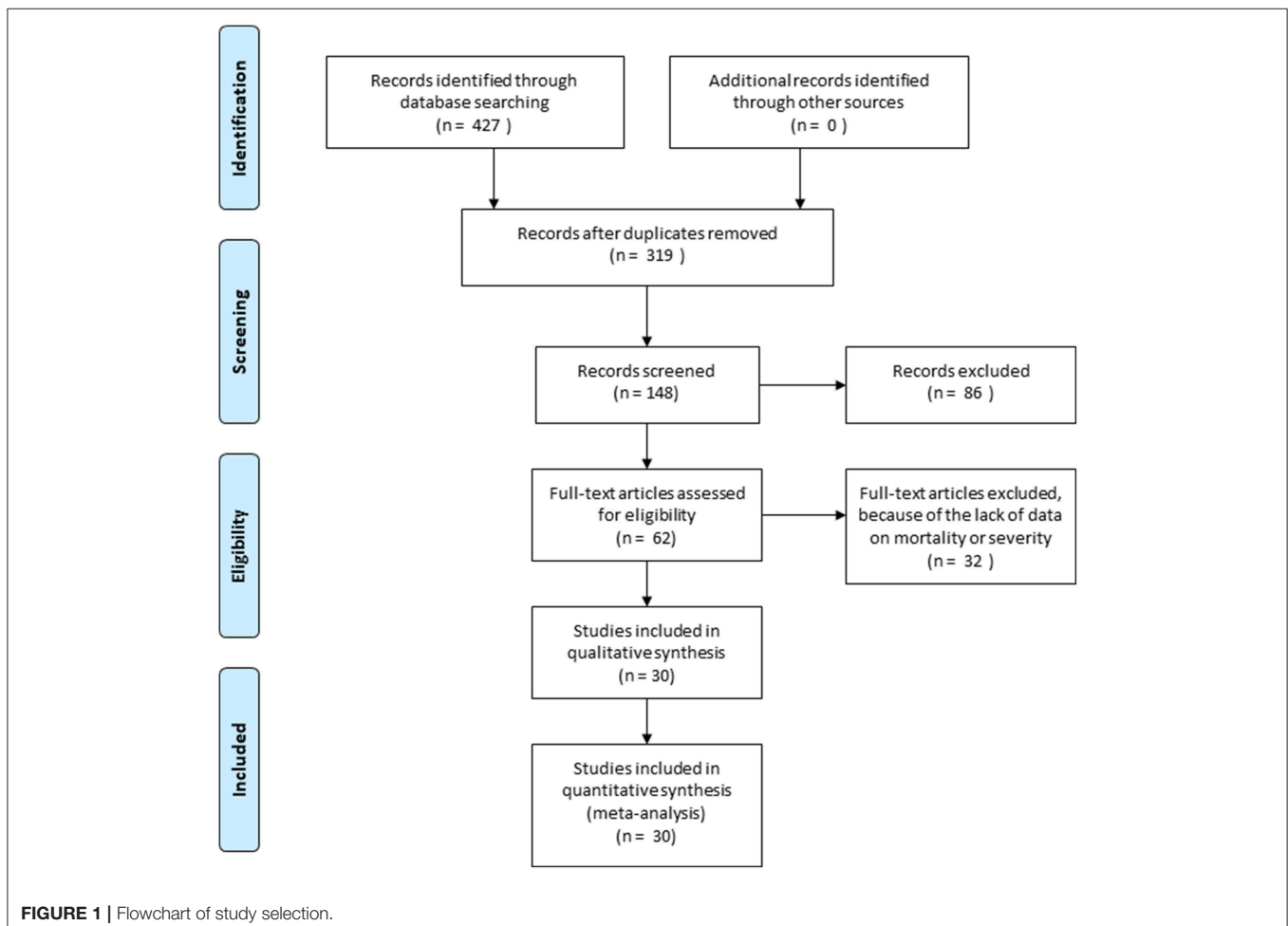
A systematic search was performed in Pubmed, Embase, and the Cochrane Library (CENTRAL), using the following search query: “acute pancreatitis” AND (“computed tomography severity index” OR CTSI OR “modified computed tomography severity index” OR MCTSI). English language filter was used. Search key in Embase were: (‘acute pancreatitis’/exp OR ‘acute pancreatitis’) AND (ctsi OR mctsi OR ‘computed tomography severity index’/exp OR ‘computed tomography severity index’ OR ‘modified computed tomography severity index’) AND [english]/lim. The search was conducted on 11th March 2018. Duplicates were removed using

the (EndNote X7.4, Clarivate Analytics, Philadelphia, PA, US) reference manager software.

### Study Selection and Data Extraction

Two independent investigators (EV, AM) selected the studies, and disagreements were resolved by a third reviewer (PH). The records were selected for meta-analysis if (1) AP patients of any severity were enrolled consecutively; (2) if CTSI or mCTSI were used for the prediction of the severity or mortality of AP; and (3) if sensitivity and specificity values, the absolute numbers of true positive (TP), false negative (FN), false positive (FP) and true negative (TN), and/or area under the curve (AUC) were reported (for CTSI/mCTSI regarding AP severity and/or mortality). If other prognostic scores (Ranson, BISAP, APACHE II) or CRP values were also assessed in the selected articles, those results were extracted as well. Only full-text articles were included.

Studies, which met the inclusion criteria were assessed for full-text evaluation. The following data were extracted from the articles: first author; year of the publication; study period; study design; the AP scoring systems used; evaluation time of the scores; the used definition for SAP; sample size based on severity; mean age; male/female ratio; cut-off value, clinical end-points,



**TABLE 2** | Basic characteristics of the included studies.

| Study number | References            | Study period | Study design  | Country     | Groups   | Evaluation time, h   | Definition of SAP    | Sample size        | Age  | Male/female ratio | Severity | Mortality |
|--------------|-----------------------|--------------|---------------|-------------|--|--|----------------------|--------------------|--|-------------------|----------|-----------|
| 1            | Cho et al., 2015      | 2011–2012    | Prospective   | South Korea | CTSI<br>Ranson<br>BISAP<br>APACHE II<br>CRP        | <48 of admission<br><48 of admission<br><24 of admission<br><24 of admission<br>On admission and 24 h after admission            | 2012 revised Atlanta | 161                | 62.3 <sup>a</sup> ± 16.1 <sup>c</sup>  | 102/59            | +        |           |
| 2            | Gurleyik et al., 2005 | 2001–2005    | Prospective   | Turkey      | CTSI<br>APACHE II<br>CRP                           | <120 after the onset of symptoms<br>48 at 48 h   | 1992 Atlanta         | 55                 | Mild: 56.1 <sup>a</sup> (28–98) <sup>e</sup><br>severe: 60.3 <sup>a</sup> (23–77) <sup>e</sup>   | 18/37             | +        |           |
| 3            | Lee et al., 2016      | 2010–2013    | Prospective   | South Korea | CTSI<br>Ranson<br>BISAP<br>APACHE II<br>CRP        | On admission<br>On admission<br>On admission<br>On admission and 24 h after admission  | 2012 revised Atlanta | 146                | Mild: 48.8 <sup>a</sup> ± 16.4 <sup>c</sup> ,<br>moderate: 49.3 <sup>a</sup> ± 18.5 <sup>c</sup> , severe: 63 <sup>a</sup> ± 22.8 <sup>c</sup> | 92/54             | +        |           |
| 4            | Qiu et al., 2015      | 2008–2014    | Retrospective | China       | CTSI<br>Ranson<br>BISAP<br>CTSI<br>Ranson<br>BISAP | <48 h of admission<br><48 h of admission<br><24 h of admission<br><48 h of admission<br><48 h of admission<br><24 h of admission | 2012 revised Atlanta | 129<br><br><br>780 | 57 <sup>a</sup> ± 17.3 <sup>c</sup>  | 468/441           | +        |           |

(Continued)

TABLE 2 | Continued

| Study number | References             | Study period    | Study design  | Country | Groups    | Evaluation time, h                           | Definition of SAP                        | Sample size | Age   | Male/female ratio | Severity | Mortality |
|--------------|------------------------|-----------------|---------------|---------|-----------|--|--|-------------|---|-------------------|----------|-----------|
| 5            | Yue et al., 2015       | 2011–2013       | Prospective   | China   | CTSI      | <48 h of admission                           | 2009 Atlanta                             | 169         | 54.3 <sup>a</sup> ± 16.7 <sup>c</sup>   | 98/71             | +        |           |
|              |                        |                 |               |         | Ranson    | <48 h  |  |             |   |                   |          |           |
|              |                        |                 |               |         | APACHE II | 0., and 72 h                                 |  |             |   |                   |          |           |
| 6            | Biberoglu et al., 2017 | 2010–2011       | Retrospective | Turkey  | CTSI      | NA   | NA                                       | 76          | Presented in intervals  | 29/47             |          | +         |
| 7            | Bollen et al., 2011    | 2005–2007       | Prospective   | NA      | CTSI      | 0–168 h, median 48 h after onset of symptoms | 2009 Atlanta                             | 196         | 53 <sup>a</sup> (21–94) <sup>e</sup>  | 107/89            | +        | +         |
|              |                        |                 |               |         | MCTSI     | 0–168 h, median 48 h after onset of symptoms |  |             |   |                   |          |           |
|              |                        |                 |               |         | APACHE II | NA   |  |             |   |                   |          |           |
| 8            | Sharma et al., 2015    | 2013–2014       | Retrospective | India   | CTSI      | 72–240 h after onset of symptoms             | 2012 revised Atlanta                     | 105         | 40.6 <sup>a</sup> ± 12.9 <sup>gNA</sup>   | 65/40             |          | +         |
|              |                        |                 |               |         | MCTSI     | 72–240 h after onset of symptoms             |  |             |   |                   |          |           |
|              |                        |                 |               |         | BISAP     | NA   |  |             |   |                   |          |           |
| 9            | Yang et al., 2016      | 2007–2015       | Retrospective | China   | MCTSI     | <72 after onset of symptoms                  | 2008 Atlanta                             | 326         | 44 <sup>a</sup> (14–85) <sup>e</sup>  | 184/142           | +        | +         |
|              |                        |                 |               |         | BISAP     | <24 of admission                             |  |             |   |                   |          |           |
|              |                        |                 |               |         | Ranson    | <48 of admission                             |  |             |   |                   |          |           |
|              |                        |                 |               |         | APACHE II | <24 of admission                             |  |             |   |                   |          |           |
| 10           | Bollen et al., 2012    | 2.5 year period | Prospective   | USA     | CTSI      | <24 of admission                             | 2009 Atlanta                             | 131         | 54 <sup>b</sup> (21–91) <sup>e</sup>  | 84/66             | +        | +         |
|              |                        |                 |               |         | MCTSI     | <24 of admission                             |  | 131         |   |                   |          |           |
|              |                        |                 |               |         | APACHE II | NA   |  | 131/159     |   |                   |          |           |
|              |                        |                 |               |         | BISAP     | NA   |  | 131/159     |   |                   |          |           |
| 11           | Alper et al., 2016     | 2011–2014       | Prospective   | Turkey  | CTSI      | Within 72–96 h after admission               | CTSI >6 and/or modified Glasgow score >3 | 187         | mild 57 <sup>a</sup> ± 17.9 <sup>NA</sup> , severe 60.1 <sup>a</sup> ± 15.9 <sup>NA</sup> | 111/76            | +        | +         |

(Continued)

TABLE 2 | Continued

| Study number | References                             | Study period | Study design  | Country  | Groups                                      | Evaluation time, h  | Definition of SAP  | Sample size                | Age  | Male/female ratio | Severity | Mortality |
|--------------|--|--------------|---------------|----------|---|---|--|----------------------------|--|-------------------|----------|-----------|
| 12           | Zhao et al., 2016                      | 2012–2014    | Observational | China    | APACHE II<br>CTSI<br>CRP                    | At admission = <72 h after onset of symptoms<br>At admission = <72 h after onset of symptoms<br><72 h | 2012 revised Atlanta   | 74                         | NA   | NA                | +        |           |
| 13           | Fabre et al., 2012                     | 2003–2007    | Retrospective | France   | Ranson<br>CTSI                              | NA  | 1992 Atlanta   | 48<br>17                   | 133 months <sup>b</sup><br>(24.9–233.5) <sup>e</sup> | 23/25             | +        |           |
| 14           | Simchuk et al., 2000                   | 1992–1997    | Retrospective | USA      | CTSI  | –   | –  | 268                        | 57 <sup>a</sup> (18–93) <sup>e</sup>                 | 147/121           |          | +         |
| 15           | Jakchairoongruang and Arjhansiri, 2013 | 2005–2010    | Retrospective | Thailand | CTSI  | –   | –  | 72                         | 47.7 <sup>a</sup> (6–89) <sup>e</sup>                | 39/33             |          | +         |
| 16           | Hashimoto et al., 2016                 | 2002–2012    | Retrospective | Japan    | Ranson<br>CTSI                              | NA  | DeBanto et al.   | 37<br>33                   | 6 <sup>b</sup> (5–12) <sup>e</sup>                   | 15/22             | +        |           |
| 17           | Park et al., 2013                      | 2007–2010    | Retrospective | Korea    | BISAP<br>Ranson<br>APACHE II<br>CTSI<br>CRP | <24 of admission<br><48 of admission<br><24 of admission<br>Within 7 days of admission<br>Initial     | Based on organ failure and/or local complications                    | 303                        | 52 <sup>NA</sup> ± 17 <sup>NA</sup>                  | 216/87            | +        | +         |
| 18           | Khanna et al., 2013                    | 2010–2012    | Prospective   | India    | BISAP<br>APACHE II<br>Ranson<br>CTSI<br>CRP | <24 of admission<br><24 of admission<br><48 of admission<br>On day 4<br>On day 2                      | Presence of organ failure for more than 48 h and local complications | 72<br>72<br>72<br>54<br>60 | 40.5 <sup>a</sup><br>(18–76) <sup>e</sup>            | 37/35             | +        | +         |

(Continued)

TABLE 2 | Continued

| Study number | References                | Study period | Study design  | Country     | Groups         | Evaluation time, h                             | Definition of SAP                            | Sample size | Age  | Male/female ratio | Severity | Mortality |
|--------------|---------------------------|--------------|---------------|-------------|----------------|--|--|-------------|--|-------------------|----------|-----------|
| 19           | Lautz et al., 2012        | 2000–2009    | Retrospective | USA         | CTSI           | At presentation                                | DeBanto et al.                               | 64          | 12.3 <sup>b</sup>  | NA                | +        |           |
| 20           | Chatzicostas et al., 2003 | 1999–2001    | Prospective   | Greece      | Ranson<br>CTSI | NA<br><72 h after admission (median time 62 h) | 1992 Atlanta                                 | 64<br>78    | 63.8 <sup>a</sup><br>(25–93) <sup>e</sup>                      | 42/36             | +        |           |
|              |                           |              |               |             | APACHE II      | <24 of admission                               |  |             |  |                   |          |           |
|              |                           |              |               |             | Ranson         | <48 of admission                               |  |             |  |                   |          |           |
| 21           | Xu et al., 2014           | 2012         | Retrospective | China       | CTSI           | Within 3–5 days after admission                | 2008 Atlanta                                 | 257         | 51.2 <sup>a</sup> ± 12.3 <sup>NA</sup><br>(23–89) <sup>e</sup> | 196/61            | +        |           |
| 22           | Yadav et al., 2016        | 2012–2014    | Prospective   | India       | BISAP          | <24 of admission                               | Persistent organ failure for more than 48 h  | 119         | 38.94 <sup>a</sup> ± 14.59 <sup>c</sup>                        | 84/35             | +        | +         |
|              |                           |              |               |             | Ranson         | <48 of admission                               |  |             |  |                   |          |           |
|              |                           |              |               |             | CTSI           | Within the first 7 days of hospitalization     |  |             |  |                   |          |           |
| 23           | Papachristou et al., 2010 | 2003–2007    | Prospective   | USA         | BISAP          | <24 of admission                               | Presence of organ failure for more than 48 h | 185         | 51.7 <sup>a</sup> (15–90) <sup>e</sup>                         | 94/91             | +        | +         |
|              |                           |              |               |             | Ranson         | <48 of admission                               |  |             |  |                   |          |           |
|              |                           |              |               |             | APACHE II      | <24 of admission                               |  |             |  |                   |          |           |
|              |                           |              |               |             | CTSI           | Within 48 h from admission                     |  |             |  |                   |          |           |
| 24           | Vriens et al., 2005       | 1994–2002    | Prospective   | Netherlands | CTSI           | Within 48 h after admission, 80% within 12 h   | NA   | 79          | 61 <sup>a</sup> (15–86) <sup>e</sup>                           | 39/40             |          | +         |
|              |                           |              |               |             | Ranson         | <48 of admission                               |  |             |  |                   |          |           |
| 25           | Raghuwanshi et al., 2016  | 2013–2015    | Prospective   | India       | CTSI           | NA   | 2012 revised Atlanta                         | 50          | NA   | NA                |          | +         |
|              |                           |              |               |             | MCTSI          |  |  |             |  |                   |          |           |

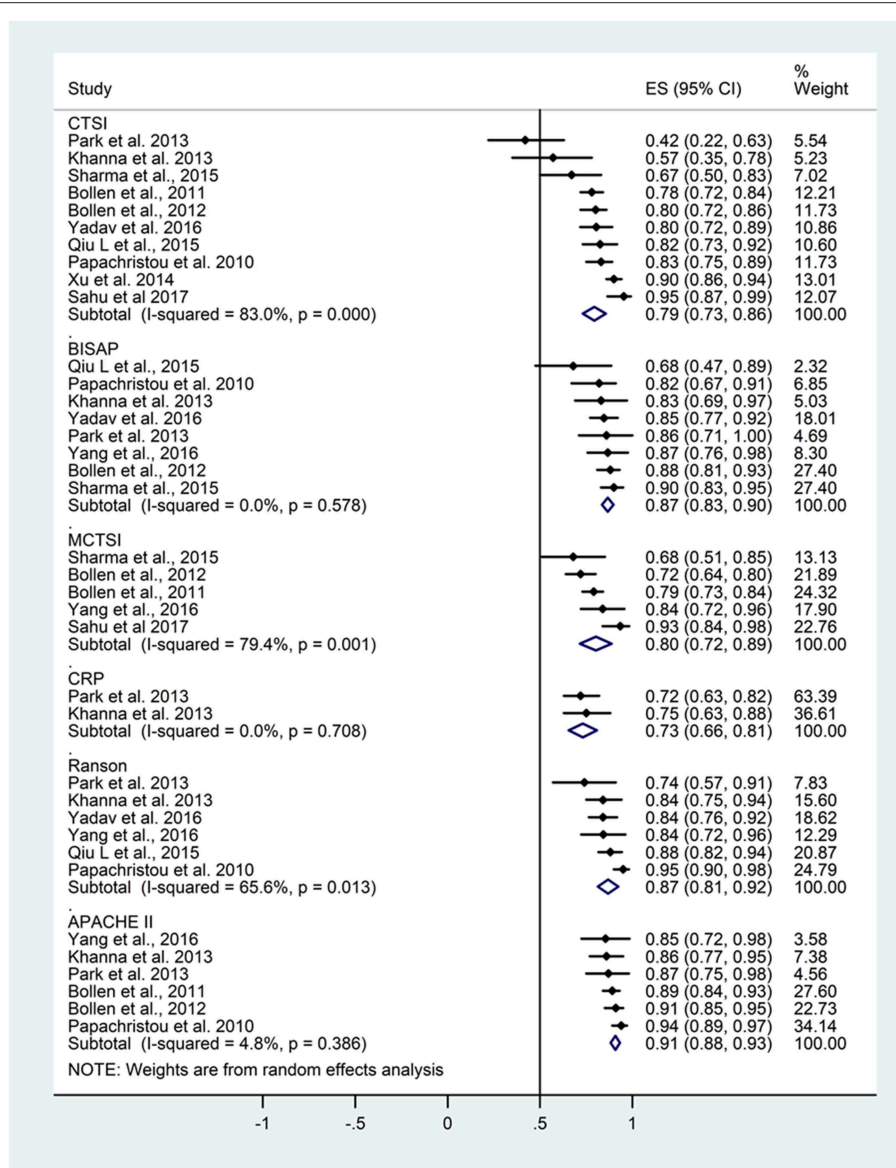
(Continued)

TABLE 2 | Continued

| Study number | References          | Study period | Study design  | Country | Groups  | Evaluation time, h   | Definition of SAP    | Sample size | Age  | Male/female ratio | Severity | Mortality |
|--------------|---------------------|--------------|---------------|---------|---|--|----------------------|-------------|--|-------------------|----------|-----------|
| 26           | Banday et al., 2015 | 2012–2013    | Prospective   | India   | MCTSI   | NA   | NA                   | 50          | 42.32 <sup>a</sup><br>(17–80) <sup>e</sup>   | 33/17             |          | +         |
| 27           | Huang et al., 2010  | 2007–2009    | Prospective   | China   | CTSI  | <24 h after onset of symptoms  | 1992 Atlanta         | 187         | Mild: 60.4 <sup>a</sup> ± 6.7 <sup>c</sup><br>severe: 59.5 <sup>a</sup> ± 7.1 <sup>c</sup> , | 112/75            | +        |           |
| 28/A         | Fei et al., 2018    | 2013–2016    | Retrospective | China   | BISAP   | On admission   | 2012 revised Atlanta | 1073        | 47.3 <sup>a</sup> ± 7.1 <sup>c</sup>   | 615/458           | +        |           |
| 28/B         |                     | 2012–2016    |               |         | CTSI<br>AAPCHE II<br>Ranson<br>BISAP<br>CTSI<br>APACHE II<br>Ranson |  |                      | 326         | 53.6 <sup>a</sup> ± 8.7 <sup>c</sup>   | 168/158           |          |           |
| 29           | Kumar et al., 2017  | 2014–2016    | Prospective   | Nepal   | CTSI<br>CRP<br>Ranson   | After 48 h after arrival to hospital at 48 h<br>After 48 h of admission      | Atlanta              | 125         | 46.78 <sup>a</sup> ± 14.16 <sup>c</sup>  | 74/51             | +        |           |
| 30           | Sahu et al., 2017   | 2014–2016    | Prospective   | India   | CTSI<br>mCTSI   | Median of 6 days; range of 5–11 days<br>Median of 6 days; range of 5–11 days | 2012 revised Atlanta | 60          | 37 <sup>a</sup> (19–65) <sup>e</sup>   | 36/24             |          | +         |

CTSI, computed tomography severity index; MCTSI, modified computed tomography severity index; BISAP, bedside index of severity in acute pancreatitis; APACHE II, Acute Physiology And Chronic Health Examination II; N/A, not applicable; <sup>a</sup>mean; <sup>b</sup>median; <sup>c</sup>standard difference; <sup>d</sup>standard error of mean; <sup>e</sup>range.





**FIGURE 2 |** Area under the curve (AUC) summarizing the predictive performance of scoring systems regarding mortality in acute pancreatitis. Size of squares for effect size reflects weight of studies in pooled analysis. Horizontal bars represent 95% confidence intervals (CI). CTSI, computed tomography severity index; BISAP, bedside index of severity in acute pancreatitis; mCTSI, modified computed tomography severity index; CRP, C-reactive protein; APACHE II, Acute Physiology And Chronic Health Examination II. The vertical line represents the line of no effect.

and several data about the statistical analysis were reviewed for the risk of bias assessment.

### Data Analysis

To construct 2 × 2 contingency tables, true positive, false positive, false negative, and true negative values were abstracted. These served as input to fit Hierarchical Summary Receiver Operating Characteristics (HSROC) curves and estimate summary sensitivity, specificity, and diagnostic odds ratio (DOR) with 95% confidence intervals (CI). For each method and outcome, we collected the AUC values and

their CIs as well and performed a meta-analysis using the random effect model to gain pooled AUC estimates with 95% CI.

The statistical analysis was performed with Stata 14 software using the metandi module<sup>1</sup>. Heterogeneity was assessed using the I<sup>2</sup> measure and the corresponding chi<sup>2</sup> test, *p* < 0.1 indicates significant heterogeneity. Based on the Cochrane Handbook, I<sup>2</sup> = 100% × (Q-df)/Q represents the magnitude of the heterogeneity (moderate: 30–60%,

<sup>1</sup><https://www.stata-journal.com/sjpdf.html?articlenum=st0163>

substantial: 50–90%, considerable: 75–100%) (Higgins and Green, 2011).

## Risk of Bias and Applicability Assessment

The Prediction model Risk Of Bias Assessment Tool (PROBAST) (Wolff et al., 2019) was used to assess the risk of bias and applicability of primary studies in accordance with the recommendation of the Cochrane Collaboration. This tool is able to assess the risk of bias based on the following four domains: participants, predictors, outcome, and analysis. It includes also concerns regarding applicability in three domains: participants, predictors and outcome.

## RESULTS

### Study Selection and Characteristics

The systematic search strategy identified 319 articles after removal of duplicates. The search provided 123 articles in Pubmed, 279 studies in Embase and 25 articles in Cochrane library databases. The flow chart (Figure 1) shows the study selection process: 148 articles were screened by abstract and after excluding 86 studies, 62 full-text articles were assessed for eligibility. A further 32 articles were excluded, because of the lack of reporting of the outcome of interest or inappropriate patient population. In our meta-analysis 30 articles were included (Simchuk et al., 2000; Chatzicostas et al., 2003; Gurleyik et al., 2005; Vriens et al., 2005; Huang et al., 2010; Papachristou et al., 2010; Bollen et al., 2011, 2012; Fabre et al., 2012; Lautz et al., 2012; Jakchairongruang and Arjhansiri, 2013; Khanna et al., 2013; Park et al., 2013; Xu et al., 2014; Banday et al., 2015; Cho et al., 2015; Qiu et al., 2015; Sharma et al., 2015; Yue et al., 2015; Alper et al., 2016; Hashimoto et al., 2016; Lee et al., 2016; Raghuvanshi et al., 2016; Yadav et al., 2016; Yang et al., 2016; Zhao et al., 2016; Biberoglu et al., 2017; Kumar et al., 2017; Sahu et al., 2017; Fei et al., 2018), which contained the data of 5,988 patients. The main characteristics of the included studies are shown in Table 2.

### Prediction of Mortality

From the 30 articles, 11 contained data on AUC for the prediction of mortality (Figure 2). Table 3 summarizes the study numbers, sample sizes, AUC, and heterogeneity data of the different severity scores based on the outcome of AP. For CTSI based on data from 10 articles, the pooled AUC for mortality was 0.79 (CI 0.73–0.86; heterogeneity  $I^2 = 83%$ ,  $p < 0.001$ ). Eight articles included AUC data for mortality for BISAP, the pooled AUC was 0.87 (CI 0.83–0.90; heterogeneity  $I^2 = 0%$ ,  $p = 0.578$ ). The pooled AUC for mCTSI was 0.80 (CI 0.72–0.89; heterogeneity  $I^2 = 79.4%$ ,  $p = 0.001$ ) according to five studies. Only two studies reported AUC data predicting mortality for CRP level, and the pooled AUC was 0.73 (CI 0.66–0.81; heterogeneity  $I^2 = 0%$ ,  $p = 0.708$ ). Six articles included AUC data for mortality for Ranson score with a pooled AUC of 0.87 (CI 0.81–0.92; heterogeneity  $I^2 = 65.6%$ ,  $p = 0.013$ ) and also for APACHE II score with a pooled AUC of 0.91 (CI 0.88–0.93; heterogeneity  $I^2 = 4.8%$ ,  $p = 0.386$ ).

**TABLE 3 |** Summary table of mortality and severity data based on the forest plots.

| Score            | Study number | Sample size | AUC (CI)         | Heterogeneity               |
|------------------|--------------|-------------|------------------|-----------------------------|
| <b>MORTALITY</b> |              |             |                  |                             |
| CTSI             | 10           | 1,489       | 0.79 (0.73–0.86) | $I^2 = 83%$ , $p < 0.001$   |
| BISAP            | 8            | 1,370       | 0.87 (0.83–0.90) | $I^2 = 0%$ , $p = 0.578$    |
| mCTSI            | 5            | 818         | 0.80 (0.72–0.89) | $I^2 = 79.4%$ , $p = 0.001$ |
| CRP              | 2            | 363         | 0.73 (0.66–0.81) | $I^2 = 0%$ , $p = 0.708$    |
| Ranson           | 6            | 1,134       | 0.87 (0.81–0.92) | $I^2 = 65.6%$ , $p = 0.013$ |
| APACHE II        | 6            | 1,213       | 0.91 (0.88–0.93) | $I^2 = 4.8%$ , $p = 0.386$  |
| <b>SEVERITY</b>  |              |             |                  |                             |
| CTSI             | 18           | 2,535       | 0.80 (0.76–0.85) | $I^2 = 86.2%$ ; $p < 0.001$ |
| BISAP            | 10           | 1,898       | 0.79 (0.72–0.86) | $I^2 = 89.7%$ , $p < 0.001$ |
| mCTSI            | 3            | 653         | 0.83 (0.75–0.91) | $I^2 = 68.1%$ ; $p = 0.043$ |
| CRP              | 6            | 869         | 0.73 (0.64–0.83) | $I^2 = 77%$ , $p = 0.001$   |
| Ranson           | 14           | 2,119       | 0.81 (0.75–0.87) | $I^2 = 87.5%$ , $p < 0.001$ |
| APACHE II        | 11           | 1,198       | 0.80 (0.77–0.83) | $I^2 = 36.8%$ , $p = 0.105$ |

Based on the above results of the meta-analytical calculations the APACHE II scoring system had significantly higher predictive accuracy for mortality than CTSI or CRP level ( $p = 0.001$ ;  $p < 0.001$ , respectively). However, CTSI was not different from the BISAP, mCTSI, CRP or Ranson criteria in the prediction of mortality of AP, and these scores can be classified as good and fair.

### Prediction of Severity

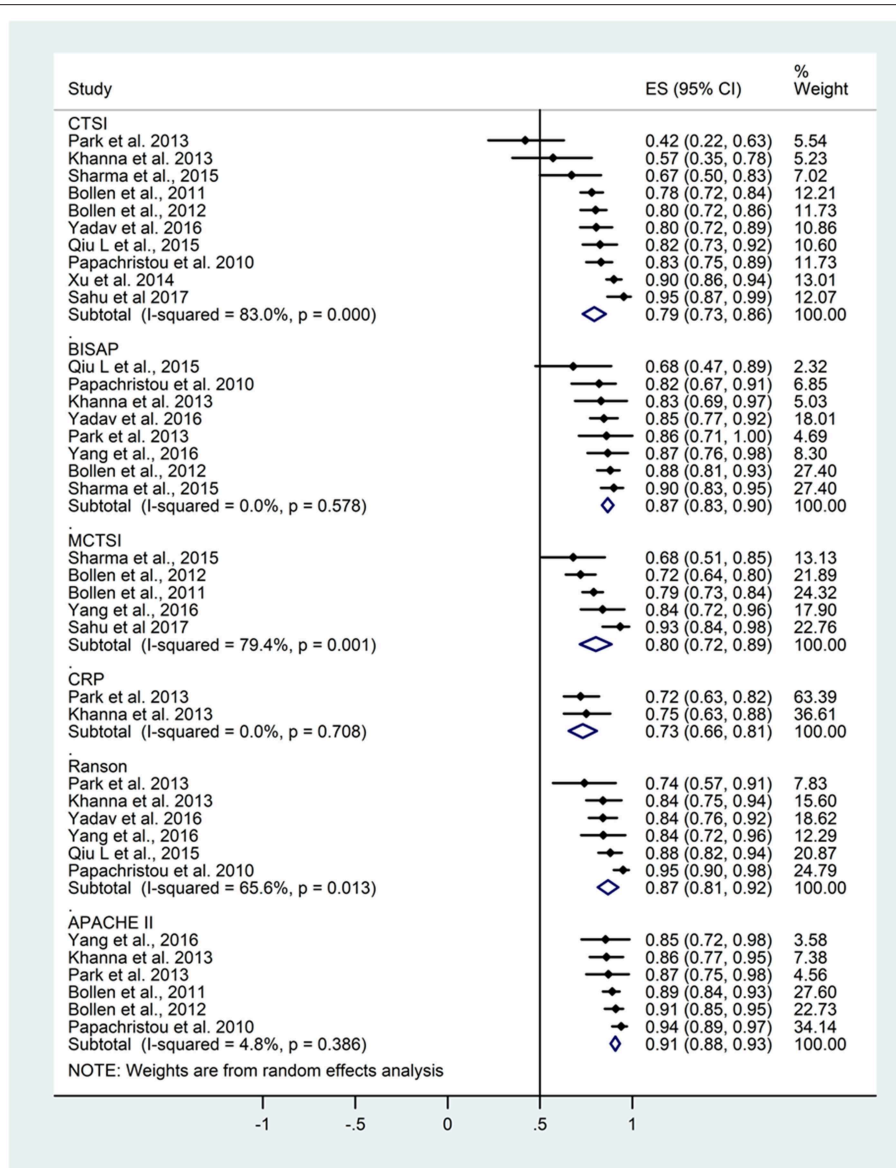
AUC data for severity were included in 19 studies (Figure 3).

The pooled AUC for severity based on data from 18 articles was 0.80 (CI 0.76–0.85) for CTSI with high heterogeneity ( $I^2 = 86.2%$ ;  $p < 0.001$ ). The pooled AUC for BISAP was 0.79 (CI 0.72–0.86, heterogeneity  $I^2 = 89.7%$ ,  $p < 0.001$ ). The pooled AUC for mCTSI from three studies was 0.83 (CI 0.75–0.91) with substantial heterogeneity ( $I^2 = 68.1%$ ;  $p = 0.043$ ). The pooled AUC was 0.73 (CI 0.64–0.83) for CRP level (heterogeneity:  $I^2 = 77%$ ,  $p = 0.001$ ), 0.81 (CI 0.75–0.87) for Ranson score (heterogeneity  $I^2 = 87.5%$ ,  $p < 0.001$ ), and 0.80 (CI 0.77–0.83) for APACHE II score (heterogeneity  $I^2 = 36.8%$ ,  $p = 0.105$ ).

There was no statistical difference between the severity predicting values of the different scoring systems. The heterogeneity values were  $I^2 = 86.2%$ ,  $p < 0.001$ ;  $I^2 = 89.7%$ ,  $p < 0.001$ ;  $I^2 = 68.1%$ ,  $p = 0.043$ ;  $I^2 = 77%$ ,  $p = 0.001$ ;  $I^2 = 87.5%$ ,  $p < 0.001$ ;  $I^2 = 36.8%$ ,  $p = 0.105$  for CTSI, BISAP, mCTSI, CRP, Ranson, and APACHE II scores, respectively. The heterogeneity across the studies was significant in all scoring systems or predicting values, except for the APACHE II score. Based on the results of the meta-analytical calculations, the severity prediction values of the included scoring systems are not different.

### HSROC Analysis of Different Scoring Systems for Predicting Mortality and Severity of AP

Figure 4A shows the application of CTSI in the form of HSROC curves for mortality [sensitivity: 0.88 (CI 0.69–0.97); specificity: 0.61 (CI 0.52–0.70); DOR: 12.84 (CI 4.19–39.41)] and



**FIGURE 3 |** Area under the curve (AUC) summarizing the predictive performance of scoring systems regarding severity in acute pancreatitis. Size of squares for effect size reflects weight of trial in pooled analysis. Horizontal bars represent 95% confidence intervals (CI). CTSI, computed tomography severity index; BISAP, bedside index of severity in acute pancreatitis; mCTSI, modified computed tomography severity index; CRP, C-reactive protein; APACHE II, Acute Physiology And Chronic Health Examination II. The vertical line represents the line of no effect.

**Figure 4B** for severity, respectively [sensitivity: 0.81 (CI 0.73–0.87); specificity: 0.82 (CI 0.73–0.88); DOR: 19.1 (CI 10.29–35.45)]. **Figure 5A** illustrates the bivariate HSROC curve of BISAP score for mortality [sensitivity: 0.88 (CI 0.71–0.96); specificity: 0.77 (CI 0.70–0.83); DOR: 24.74 (CI 9.44–64.81)] and **Figure 5B** for severity, respectively [sensitivity: 0.73 (CI 0.53–0.87); specificity: 0.80 (CI 0.72–0.88); DOR: 11.71 (CI 4.49–30.61)]. **Figure 6A** shows the application of mCTSI in the form of HSROC curves for mortality [sensitivity: 0.95 (CI 0.76–0.99); specificity: 0.36 (CI 0.16–0.63); DOR: 10.32 (CI 2.11–50.53)] and **Figure 6B** for severity, respectively [sensitivity: 0.88

(CI 0.47–0.98); specificity: 0.80 (CI 0.56–0.92); DOR: 29.07 (CI 3.36–251.91)]. **Figure 7** illustrates the bivariate HSROC curve of CRP score for severity [sensitivity: 0.71 (CI 0.59–0.81); specificity: 0.87 (CI 0.66–0.96); DOR: 16.75 (CI 3.49–80.48)]. **Figure 8A** illustrates the bivariate HSROC curve of Ranson score for mortality [sensitivity: 0.91 (CI 0.70–0.98); specificity: 0.72 (CI 0.66–0.79); DOR: 28.72 (CI 7.57–109.05)] and **Figure 8B** for severity, respectively [sensitivity: 0.79 (CI 0.69–0.86); specificity: 0.78 (CI 0.71–0.84); DOR: 13.32 (CI 7.33–24.24)]. **Figure 9A** illustrates the bivariate HSROC curve of APACHE II score for mortality [sensitivity: 0.92 (CI 0.70–0.98); specificity: 0.79

**TABLE 4** | Summary table of mortality and severity data based on the HSROC curves.

| Score            | Sensitivity      | Specificity      | DOR                 |
|------------------|------------------|------------------|---------------------|
| <b>MORTALITY</b> |                  |                  |                     |
| CTSI             | 0.88 (0.69–0.97) | 0.61 (0.52–0.70) | 12.84 (4.19–39.41)  |
| BISAP            | 0.88 (0.71–0.96) | 0.77 (0.70–0.83) | 24.74 (9.44–64.81)  |
| MCTSI            | 0.95 (0.76–0.99) | 0.36 (0.16–0.63) | 10.32 (2.11–50.53)  |
| Ranson           | 0.91 (0.70–0.98) | 0.72 (0.66–0.79) | 28.72 (7.57–109.05) |
| APACHE II        | 0.92 (0.70–0.98) | 0.79 (0.66–0.88) | 45.08 (11.4–178.2)  |
| <b>SEVERITY</b>  |                  |                  |                     |
| CTSI             | 0.81 (0.73–0.87) | 0.82 (0.73–0.88) | 19.10 (10.29–35.45) |
| BISAP            | 0.73 (0.53–0.87) | 0.80 (0.72–0.88) | 11.71 (4.49–30.61)  |
| MCTSI            | 0.88 (0.47–0.98) | 0.80 (0.56–0.92) | 29.07 (3.36–251.91) |
| CRP              | 0.71 (0.59–0.81) | 0.87 (0.66–0.96) | 16.75 (3.49–80.48)  |
| Ranson           | 0.79 (0.69–0.86) | 0.78 (0.71–0.84) | 13.32 (7.33–24.24)  |
| APACHE II        | 0.71 (0.60–0.79) | 0.80 (0.71–0.88) | 9.94 (6.45–15.30)   |

(CI 0.66–0.88); DOR: 45.08 (CI 11.4–178.2)] and **Figure 9B** for severity, respectively [sensitivity: 0.71 (CI 0.60–0.79); specificity: 0.80 (CI 0.71–0.88); DOR: 9.94 (CI 6.45–15.30)].

Sensitivity, specificity, and DOR data of all scores predicting mortality and severity are summarized in **Table 4**. In summary, the sensitivity for the prediction of mortality of AP was the highest for mCTSI, Ranson, and APACHE II scores. While the specificity for prediction of mortality was the best for APACHE II, BISAP, and Ranson scores. The sensitivity for the prediction of severity of CTSI, mCTSI, and Ranson scores were the highest, while the specificity for prediction of severity were the highest for CRP and CTSI.

## Quality Assessment and Risk of Bias

In this study, the two main outcomes were mortality and severity of the disease, therefore, we included the data in two different tables. The majority of the studies included in our analysis met the predefined criteria of the definition of AP and contained all grades of severities, therefore the risk of bias regarding the included populations was deemed as low. The data on CTSI from all studies were significantly limited by the timeframe the CT was done from either the admission or the onset of the symptoms and the diagnosis of AP. Therefore, this is the main limitation of the applicability of our results on CTSI. The result of the risk of bias and applicability assessment is showed in **Tables 5A,B**.

## DISCUSSION

### Summary of Main Findings

Severe acute pancreatitis is a serious state with high mortality and it requires high costs of the health care system. By more accurate prediction of the severity on admission, the risk of mortality can be reduced with the immediate optimal therapy.

Acute pancreatitis is diagnosed on the basis of the presence of two or more of the following three criteria: abdominal pain consistent with the diagnosis elevated pancreatic enzymes to a level of more than three times the upper normal value, and characteristic findings on abdominal imaging. Different

radiological modalities (ultrasound, CT) are not only necessary to make the diagnosis of AP, but by the visualization of the gallbladder and biliary tract, they can reveal its etiology as biliary or non-biliary. Furthermore, by using morphological scoring systems e.g., CTSI or mCTSI, obtaining a CT scan can be useful for assessing the severity of AP.

This is the first meta-analysis, which quantifies the accuracy of CTSI and mCTSI scores for the prediction of the severity and mortality of AP, and compares them with other commonly used scoring systems. Two previous meta-analyses (Gao et al., 2015; Yang and Li, 2016) assessed the predictive accuracy of the BISAP score, but these articles did not contain CTSI nor mCTSI. Yang and Li (2016) found that the pooled sensitivity and specificity of the BISAP for the prediction of SAP were 0.65 (CI: 0.54–0.74) and 0.84 (CI: 0.70–0.92), respectively, the pooled AUC was 0.77 (CI: 0.73–0.80). Gao et al. (2015) calculated the pooled sensitivity as 0.51 (CI: 0.43–0.60), the specificity as 0.91 (CI: 0.89–0.92), the AUC was 0.87. Based on our results, we calculated 0.73 (CI: 0.53–0.87) for sensitivity, 0.80 (CI: 0.72–0.88) for specificity, and our pooled AUC was 0.79. The results are similar, the difference in specificity between our results and those of Gao et al. (2015) may be explained by the higher numbers of articles included in our analysis.

In our meta-analysis, APACHE II proved to be the most accurate scoring system for the prediction of mortality. It is the most widely used mortality prediction score in critically ill patients, however, it contains 12 points, including numerous clinical parameters, hence its application can be cumbersome and it limits its widespread use. In addition, APACHE II is designed for patients admitted to the intensive care unit, therefore it is not suitable for the early prediction of severity of AP. The AUC's of BISAP, mCTSI, and Ranson scores overlapped with APACHE II, while those of CTSI and CRP were mildly weaker.

Computed tomography severity index is accurate to predict severity, and its accuracy did not differ from the other scoring systems. However, the Ranson, APACHE II, and BISAP scores include several clinical parameters. There is a good correlation between morphological severity according to CT scoring systems and clinical scoring systems using clinical data and laboratory parameters.

The most recent guidelines of AP recommend a CT scan 72–96 h after the onset of the symptoms (Working Group IAP/APA Acute Pancreatitis Guidelines., 2013; Hritz et al., 2015), because pancreatic parenchymal necrosis in contrast-enhanced CT rarely appears within 48 h (Ryu, 2009). The guidelines allow an earlier CT scan in case of diagnostic uncertainty.

However, the contrast-enhanced CT examination cannot always be performed in every patient. In extreme obese patients, body weight, and size preclude the CT investigation. The contrast-enhanced CT assessment requires an intravenous injection of iodinated contrast medium for the detection of hypoperfused areas in pancreas parenchyma, therefore intravenous contrast media allergy, impaired renal function, and hyperthyroidism are contraindications.

Because of the risk of radiation exposure, repeated CT scans should be avoided, and should be reserved for patients who fail to improve clinically. CT examination had shown an advantage

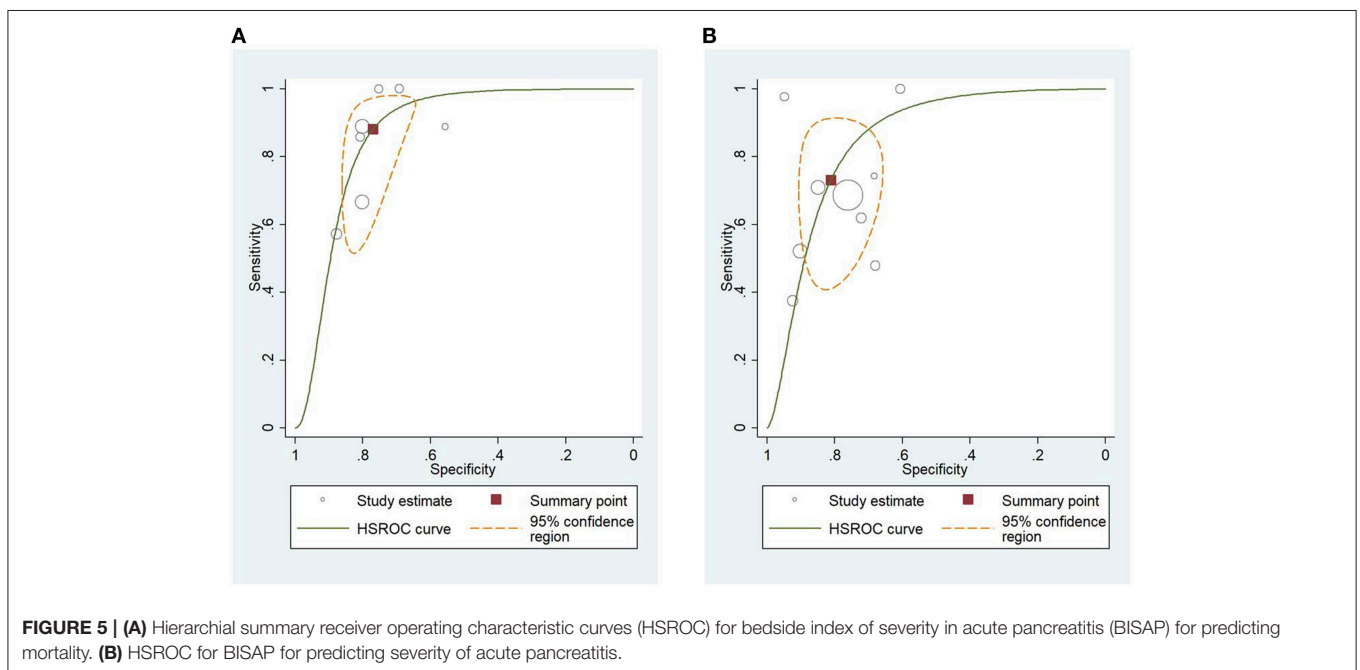
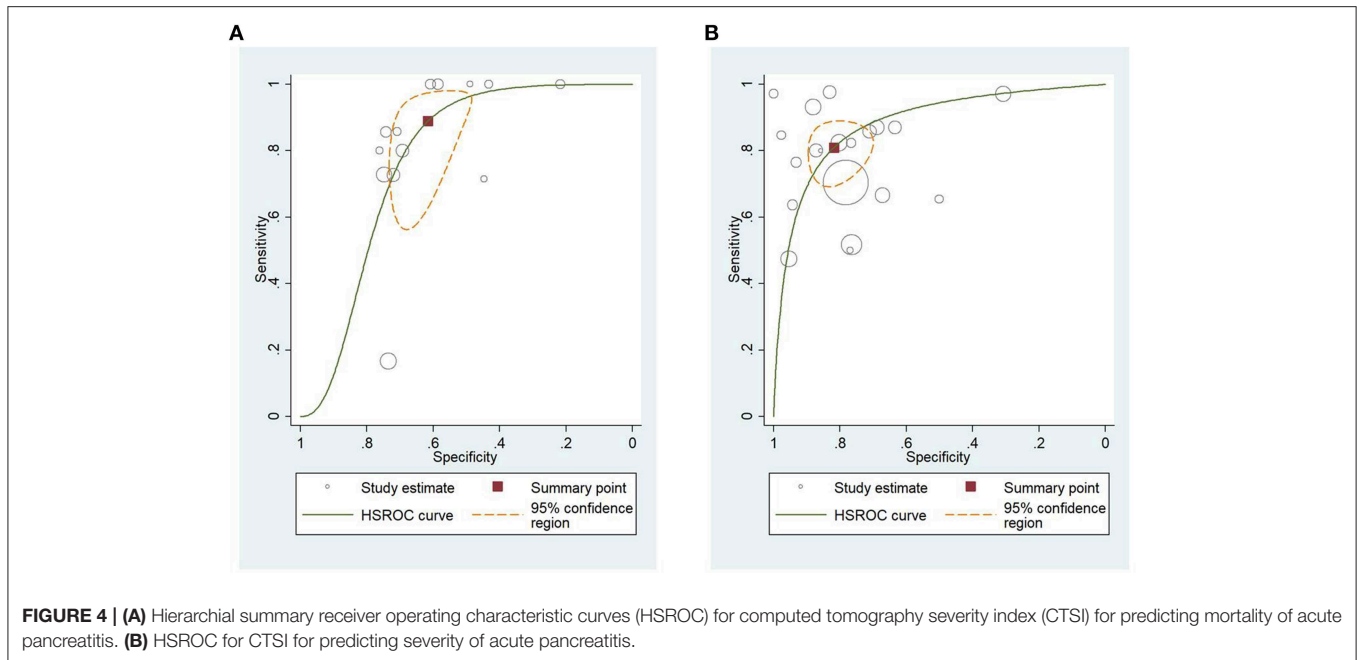
**TABLE 5A |** The PROBAST Tool for mortality.

| Study                                 | Risk of bias  |       |            |     |         |           |                             |     | Applicability concerns |       |            |     |         |           |                   |              | Overall        |   |   |
|---------------------------------------|---------------|-------|------------|-----|---------|-----------|-----------------------------|-----|------------------------|-------|------------|-----|---------|-----------|-------------------|--------------|----------------|---|---|
|                                       | Partici-pants |       | Predictors |     |         |           | Outcome Ana-mortality lysis |     | Partici-pants          |       | Predictors |     |         |           | Outcome mortality | Risk of bias | Appli-cability |   |   |
|                                       | CTSI          | BISAP | MCTSI      | CRP | Ran-son | Apache II |                             |     | CTSI                   | BISAP | MCTSI      | CRP | Ran-son | Apache II |                   |              |                |   |   |
| Biberoglu et al., 2017                | +             | ?     | N/A        | N/A | N/A     | N/A       | N/A                         | -   | -                      | -     | ?          | N/A | N/A     | N/A       | N/A               | N/A          | -              | + | ? |
| Bollen et al., 2011                   | -             | -     | N/A        | -   | N/A     | N/A       | ?                           | -   | -                      | -     | +          | N/A | +       | N/A       | N/A               | ?            | -              | - | + |
| Sharma et al., 2015                   | -             | -     | -          | -   | N/A     | N/A       | N/A                         | N/A | -                      | -     | +          | ?   | +       | N/A       | N/A               | N/A          | N/A            | - | + |
| Yang et al., 2016                     | -             | N/A   | -          | -   | N/A     | -         | -                           | -   | ?                      | +     | N/A        | -   | -       | N/A       | -                 | -            | -              | - | + |
| Bollen et al., 2012                   | -             | -     | -          | -   | N/A     | N/A       | -                           | -   | -                      | -     | +          | -   | -       | N/A       | N/A               | -            | -              | - | + |
| Alper et al., 2016                    | +             | -     | N/A        | N/A | N/A     | N/A       | N/A                         | -   | -                      | +     | -          | N/A | N/A     | N/A       | N/A               | N/A          | -              | + | - |
| Simchuk et al., 2000                  | -             | ?     | N/A        | N/A | N/A     | N/A       | N/A                         | -   | -                      | -     | ?          | N/A | N/A     | N/A       | N/A               | N/A          | N/A            | ? | ? |
| Jakchairongruang and Arjhansiri, 2013 | -             | ?     | N/A        | N/A | N/A     | N/A       | N/A                         | -   | +                      | +     | ?          | N/A | N/A     | N/A       | N/A               | N/A          | -              | + | + |
| Park et al., 2013                     | -             | -     | -          | N/A | -       | -         | -                           | -   | -                      | -     | +          | -   | N/A     | -         | -                 | -            | -              | - | + |
| Khanna et al., 2013                   | -             | +     | -          | N/A | +       | -         | -                           | -   | -                      | -     | -          | -   | N/A     | N/A       | -                 | -            | -              | + | - |
| Yadav et al., 2016                    | +             | -     | -          | N/A | N/A     | -         | N/A                         | -   | -                      | -     | +          | -   | N/A     | N/A       | -                 | N/A          | -              | + | + |
| Papachristou et al., 2010             | -             | +     | -          | N/A | N/A     | -         | -                           | -   | -                      | -     | +          | -   | N/A     | N/A       | -                 | -            | -              | + | + |
| Vriens et al., 2005                   | -             | -     | N/A        | N/A | N/A     | -         | N/A                         | N/A | +                      | -     | +          | N/A | N/A     | N/A       | -                 | N/A          | -              | - | + |
| Raghuwanshi et al., 2016              | +             | ?     | N/A        | ?   | N/A     | N/A       | N/A                         | -   | ?                      | ?     | +          | N/A | +       | N/A       | N/A               | N/A          | -              | + | + |
| Banday et al., 2015                   | -             | N/A   | N/A        | ?   | N/A     | N/A       | N/A                         | -   | ?                      | -     | N/A        | N/A | +       | N/A       | N/A               | N/A          | -              | ? | + |
| Sahu et al., 2017                     | -             | -     | N/A        | -   | N/A     | N/A       | N/A                         | -   | ?                      | -     | +          | N/A | +       | N/A       | N/A               | N/A          | -              | ? | + |

TABLE 5B | The PROBAST Tool for severity.

| Study                     | Risk of bias      |       |            |     |             |              |                     |               | Applicability concerns |       |            |     |             |              | Overall             |                 |                    |
|---------------------------|-------------------|-------|------------|-----|-------------|--------------|---------------------|---------------|------------------------|-------|------------|-----|-------------|--------------|---------------------|-----------------|--------------------|
|                           | Partici-<br>pants |       | Predictors |     |             |              | Outcome<br>severity | Ana-<br>lysis | Partici-<br>pants      |       | Predictors |     |             |              | Outcome<br>severity | Risk of<br>bias | Appli-<br>cability |
|                           | CTSI              | BISAP | MCTSI      | CRP | Ran-<br>son | Apache<br>II |                     |               | CTSI                   | BISAP | MCTSI      | CRP | Ran-<br>son | Apache<br>II |                     |                 |                    |
| Cho et al., 2015          | -                 | -     | -          | N/A | -           | -            | -                   | -             | -                      | -     | -          | N/A | -           | -            | -                   | -               | -                  |
| Gurleyik et al., 2005     | -                 | -     | N/A        | N/A | -           | N/A          | -                   | -             | -                      | +     | N/A        | N/A | -           | N/A          | -                   | -               | +                  |
| Lee et al., 2016          | -                 | -     | -          | N/A | -           | -            | -                   | ?             | -                      | +     | -          | N/A | -           | -            | -                   | ?               | +                  |
| Qiu et al., 2015          | -                 | -     | -          | N/A | N/A         | -            | N/A                 | -             | -                      | -     | -          | N/A | N/A         | -            | N/A                 | -               | -                  |
| Yue et al., 2015          | -                 | +     | N/A        | N/A | N/A         | -            | -                   | -             | -                      | +     | N/A        | N/A | N/A         | -            | -                   | -               | +                  |
| Bollen et al., 2011       | -                 | -     | N/A        | -   | N/A         | N/A          | ?                   | -             | -                      | +     | N/A        | +   | N/A         | N/A          | ?                   | -               | +                  |
| Yang et al., 2016         | -                 | N/A   | -          | -   | N/A         | -            | -                   | ?             | +                      | N/A   | -          | -   | N/A         | -            | -                   | -               | +                  |
| Bollen et al., 2012       | -                 | -     | -          | -   | N/A         | N/A          | -                   | -             | -                      | +     | -          | -   | N/A         | N/A          | -                   | -               | +                  |
| Alper et al., 2016        | -                 | -     | N/A        | N/A | N/A         | N/A          | N/A                 | +             | -                      | +     | -          | N/A | N/A         | N/A          | N/A                 | -               | +                  |
| Zhao et al., 2016         | -                 | -     | N/A        | N/A | -           | N/A          | -                   | -             | -                      | +     | -          | N/A | N/A         | -            | N/A                 | -               | +                  |
| Fabre et al., 2012        | -                 | +     | N/A        | N/A | N/A         | -            | N/A                 | -             | ?                      | +     | N/A        | N/A | N/A         | ?            | N/A                 | -               | +                  |
| Hashimoto et al., 2016    | -                 | ?     | N/A        | N/A | N/A         | ?            | N/A                 | N/A           | +                      | +     | ?          | N/A | N/A         | ?            | N/A                 | ?               | +                  |
| Park et al., 2013         | -                 | -     | -          | N/A | -           | -            | -                   | -             | -                      | -     | +          | -   | N/A         | -            | -                   | -               | +                  |
| Khanna et al., 2013       | -                 | +     | -          | N/A | +           | -            | -                   | -             | -                      | -     | -          | N/A | N/A         | -            | -                   | -               | +                  |
| Lautz et al., 2012        | +                 | -     | N/A        | N/A | N/A         | ?            | N/A                 | -             | ?                      | +     | +          | N/A | N/A         | N/A          | ?                   | N/A             | +                  |
| Chatzicostas et al., 2003 | -                 | -     | N/A        | N/A | N/A         | -            | -                   | -             | ?                      | -     | -          | N/A | N/A         | N/A          | -                   | -               | -                  |
| Xu et al., 2014           | +                 | -     | N/A        | N/A | N/A         | N/A          | N/A                 | -             | -                      | -     | -          | N/A | N/A         | N/A          | N/A                 | N/A             | +                  |
| Yadav et al., 2016        | +                 | -     | -          | N/A | N/A         | -            | N/A                 | -             | -                      | -     | -          | +   | -           | N/A          | N/A                 | -               | +                  |
| Papachristou et al., 2010 | -                 | +     | -          | N/A | N/A         | -            | -                   | -             | -                      | -     | +          | -   | N/A         | N/A          | -                   | -               | +                  |
| Huang et al., 2010        | -                 | -     | N/A        | N/A | N/A         | N/A          | N/A                 | -             | -                      | -     | +          | N/A | N/A         | N/A          | N/A                 | -               | +                  |
| Fei et al., 2018          | -                 | ?     | -          | N/A | N/A         | -            | -                   | -             | -                      | -     | +          | -   | N/A         | N/A          | -                   | -               | ?                  |
| Kumar et al., 2017        | -                 | ?     | N/A        | N/A | -           | -            | N/A                 | ?             | -                      | -     | -          | N/A | N/A         | -            | -                   | N/A             | -                  |

red, high risk of bias or concern; yellow, unclear risk of bias or concern; green, low risk of bias or concern; +, high risk of bias or concern; ?, unclear risk of bias or concern; -, low risk of bias or concern.



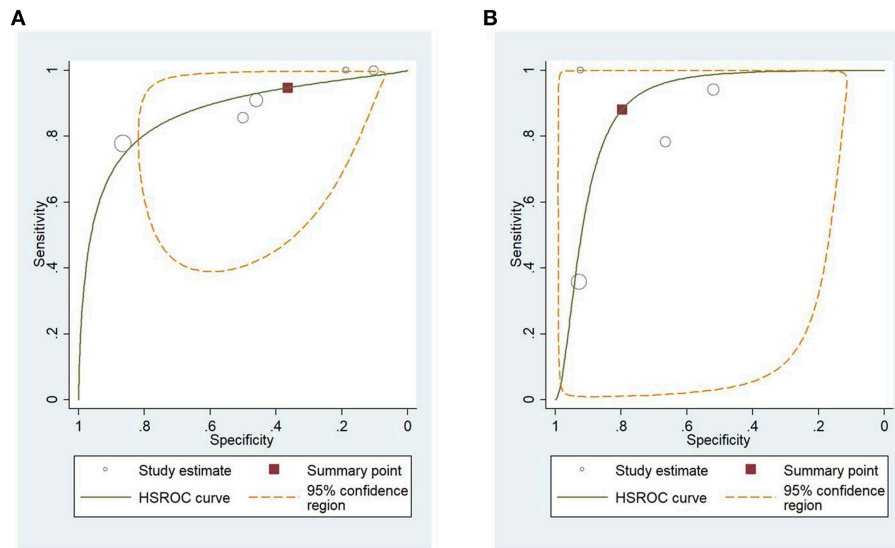
in evaluation of local complications (Ju et al., 2006), which can modify therapeutical strategy.

Contrary to the evaluation of Ranson, BISAP, and APACHE II scores, contrast-enhanced CT assessment, and CTSI calculation require radiological expertise.

## Limitations

Three of the articles contained data of children (Fabre et al., 2012; Lautz et al., 2012; Hashimoto et al., 2016), in 2 from these articles the DeBanto score was used for evaluating the severity

of AP, which is a specific score for pediatric pancreatitis. The AP population of the studies is not necessarily representative for the whole AP population, because the CT scan is mostly performed in the more severe cases. In several studies not all etiologies of AP were included, Yang et al. included only patients with hyperlipidemic etiology while Alper et his coworkers included only biliary AP cases. Fifteen of the included studies were retrospectively designed, and these might have caused selection bias. The time of CTSI and mCTSI was not the same in the studies, in several studies it included a longer delay, while



**FIGURE 6 | (A)** Hierarchical summary receiver operating characteristic curves (HSROC) for modified computed tomography severity index (mCTSI) for predicting mortality of acute pancreatitis. **(B)** HSROC for mCTSI for predicting severity of acute pancreatitis.

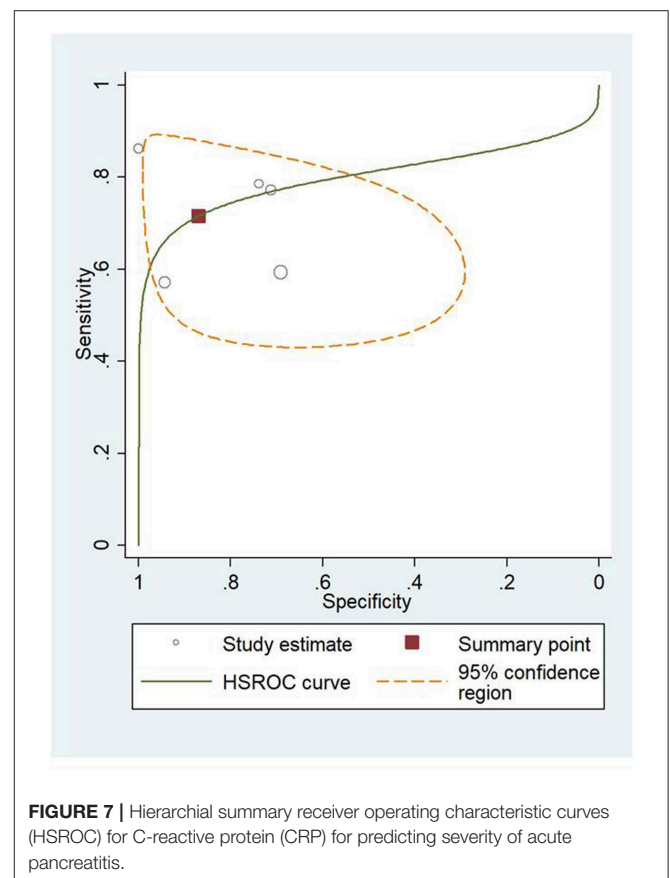
in others it was carried out on admission, leading to higher heterogeneity. While APACHE II, Ranson, BISAP and CRP values were established mostly on admission or within the first 48 h, the optimal timing of the CT examination 72–96 h after the onset of the symptoms and in several studies it was performed later than the other prognostic scores. This can limitate the prognostic score of the CTSI because the other scores can predict earlier severity or mortality with similar accuracy. It is also a good question if the radiologist can judge the time point of necrosis development. In populations with previous necrotizing pancreatitis, the severity cannot be accurately assessed.

For the value of predicting mortality, a considerable heterogeneity for CTSI and a substantial heterogeneity for Ranson score can be observed, while for the severity predicting value of AP a considerable heterogeneity for CTSI, BISAP, CRP, and Ranson scores and substantial heterogeneity for mCTSI can be noticed. We suspect that the confounder factors, that cause high heterogeneity among the studies are because of different population in terms of ethnicity, BMI, age (etc.), and etiology, the different timing and interpretation of imaging modalities, and potential inter observer variability between the radiologists interpreting the CT images. Because of the long delay characterizing the studies, the severity was assessed according to several Atlanta classifications and definitions.

## CONCLUSIONS

### Implications for Practice

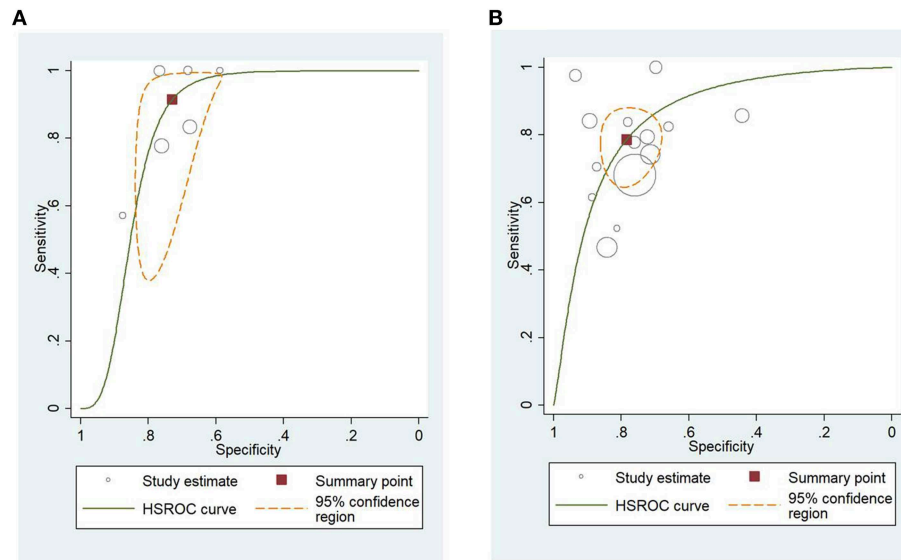
In the prediction of mortality in AP, CTSI was revealed as equally valuable as BISAP, mCTSI, CRP, or Ranson score, only APACHE II score overcame its predicting ability. Considering severity, there was no difference in the prediction value of the



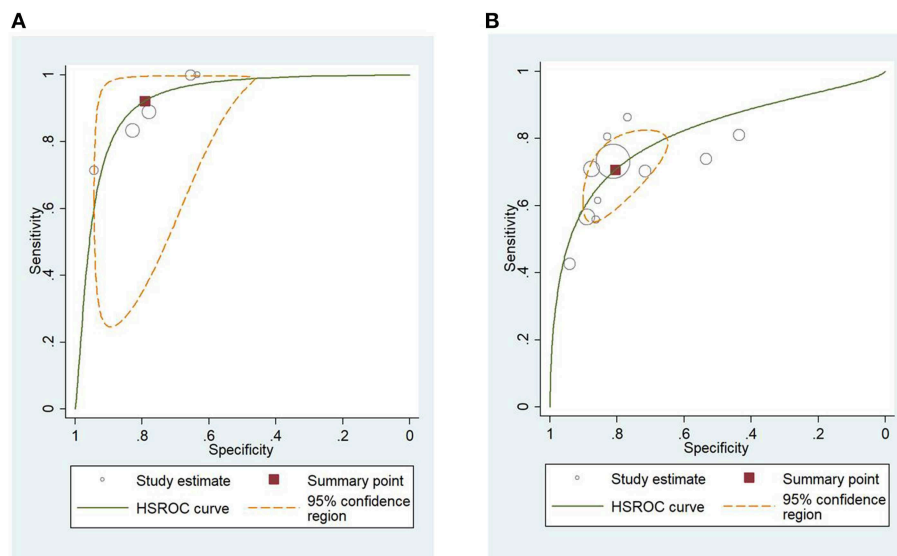
**FIGURE 7 |** Hierarchical summary receiver operating characteristic curves (HSROC) for C-reactive protein (CRP) for predicting severity of acute pancreatitis.

scores. If CT scans are performed, CTSI and mCTSI can be easily calculated and should be used in addition to the other scoring systems.





**FIGURE 8 | (A)** Hierarchical summary receiver operating characteristic curves (HSROC) for Ranson score for predicting mortality of acute pancreatitis. **(B)** HSROC for Ranson score for predicting severity of acute pancreatitis.



**FIGURE 9 | (A)** Hierarchical summary receiver operating characteristic curves (HSROC) for Acute Physiology And Chronic Health Examination II (APACHE II) score for predicting mortality of acute pancreatitis. **(B)** HSROC for APACHE II score for predicting severity of acute pancreatitis.

## Implications for Research

Further research is warranted for the assessment of the effect of early CT and its predictive value in AP.

## DATA AVAILABILITY

The datasets generated for this study are available on request to the corresponding author.

## AUTHOR CONTRIBUTIONS

ÉV and PH designed the research and the study concept. ÉV and AM performed the acquisition of data. PM and AS analyzed and interpreted the data. ÉV, AM, PM, AS, and PH wrote the article. AG, MB, BE, and LC supervised the study. BM, BE, JT, PS, and IR made a critical revision of the manuscript for important intellectual content. All of the authors gave their final approval of the version of the article to be published.

## FUNDING

This study was supported by Project Grants (K116634 and KH125678 to PH) and Economic Development and Innovation Operative Programme Grant (GINOP 2.3.2-15-2016-00048 to PH) and Human Resources Development Operational Programme Grant (EFOP-3.6.2-16-2017-00006 to PH) of the National Research, Development and Innovation Office and by a Momentum Grant of

the Hungarian Academy of Sciences (LP2014-10/2014 to PH), and Grant of the University of Pécs (KA-2019-14 to AM).

## SUPPLEMENTARY MATERIAL

The Supplementary Material for this article can be found online at: <https://www.frontiersin.org/articles/10.3389/fphys.2019.01002/full#supplementary-material>

## REFERENCES

- Alper, E., Arabul, M., Aslan, F., Cekic, C., Celik, M., Ipek, S., et al. (2016). Radial EUS examination can be helpful in predicting the severity of acute biliary pancreatitis. *Medicine (Baltimore)* 95:e2321. doi: 10.1097/MD.00000000000002321
- Balthazar, E. J., Robinson, D. L., Megibow, A. J., and Ranson, J. H. (1990). Acute pancreatitis: value of CT in establishing prognosis. *Radiology* 174, 331–336. doi: 10.1148/radiology.174.2.2296641
- Banday, I. A., Gattoo, I., Khan, A. M., Javeed, J., Gupta, G., and Latief, M. (2015). Modified computed tomography severity index for evaluation of acute pancreatitis and its correlation with clinical outcome: a tertiary care hospital based observational study. *J. Clin. Diagn. Res.* 9, TC01–TC05. doi: 10.7860/JCDR/2015/14824.6368
- Banks, P. A., Bollen, T. L., Dervenis, C., Gooszen, H. G., Johnson, C. D., Sarr, M. G., et al. (2013). Classification of acute pancreatitis—2012: revision of the Atlanta classification and definitions by international consensus. *Gut* 62, 102–111. doi: 10.1136/gutjnl-2012-302779
- Biberoglu, S., Koyuncu, M., Ozturk, D., Toksoz, A. C., Cakmakci, E., Cakmak, F., et al. (2017). Role of computed tomography severity index in acute diagnosis and follow-up of acute pancreatitis. *J. Clin. Anal. Med.* 8, 106–110. doi: 10.4328/JCAM.4627
- Bollen, T. L., Singh, V. K., Maurer, R., Repas, K., Van Es, H. W., Banks, P. A., et al. (2011). Comparative evaluation of the modified CT severity index and CT severity index in assessing severity of acute pancreatitis. *AJR Am. J. Roentgenol.* 197, 386–392. doi: 10.2214/AJR.09.4025
- Bollen, T. L., Singh, V. K., Maurer, R., Repas, K., Van Es, H. W., Banks, P. A., et al. (2012). A comparative evaluation of radiologic and clinical scoring systems in the early prediction of severity in acute pancreatitis. *Am. J. Gastroenterol.* 107, 612–619. doi: 10.1038/ajg.2011.438
- Chatzicostas, C., Roussomoustakaki, M., Vardas, E., Romanos, J., and Kouroumalis, E. A. (2003). Balthazar computed tomography severity index is superior to Ranson criteria and APACHE II and III scoring systems in predicting acute pancreatitis outcome. *J. Clin. Gastroenterol.* 36, 253–260. doi: 10.1097/00004836-200303000-00013
- Cho, J. H., Kim, T. N., Chung, H. H., and Kim, K. H. (2015). Comparison of scoring systems in predicting the severity of acute pancreatitis. *World J. Gastroenterol.* 21, 2387–2394. doi: 10.3748/wjg.v21.i8.2387
- Fabre, A., Petit, P., Gaudart, J., Mas, E., Vial, J., Olives, J. P., et al. (2012). Severity scores in children with acute pancreatitis. *J. Pediatr. Gastroenterol. Nutr.* 55, 266–267. doi: 10.1097/MPG.0b013e318254c1c7
- Fei, Y., Gao, K., Tu, J., Wang, W., Zong, G.-Q., and Li, W.-Q. (2018). Predicting and evaluation the severity in acute pancreatitis using a new modeling built on body mass index and intra-abdominal pressure. *Am. J. Surg.* 216, 304–309. doi: 10.1016/j.amjsurg.2017.04.017
- Gao, W., Yang, H.-X., and Ma, C.-E. (2015). The value of BISAP score for predicting mortality and severity in acute pancreatitis: a systematic review and meta-analysis. *PLoS ONE* 10:e0130412. doi: 10.1371/journal.pone.0142025
- Gurleyik, G., Emir, S., Kilicoglu, G., Arman, A., and Saglam, A. (2005). Computed tomography severity index, APACHE II score, and serum CRP concentration for predicting the severity of acute pancreatitis. *JOP* 6, 562–567.
- Hashimoto, N., Yotani, N., Michihata, N., Tang, J., Sakai, H., and Ishiguro, A. (2016). Efficacy of pediatric acute pancreatitis scores at a Japanese tertiary center. *Pediatr. Int.* 58, 224–228. doi: 10.1111/ped.12774
- Higgins, J. P. T., and Green, S. (eds) (2011). *Cochrane Handbook for Systematic Reviews of Interventions Version 5.1.0 [updated March 2011]*. The Cochrane Collaboration. Available online at: [www.handbook.cochrane.org](http://www.handbook.cochrane.org)
- Hritz, I., Czako, L., Dubravcsik, Z., Farkas, G., Kelemen, D., Laszity, N., et al. (2015). [Acute pancreatitis. Evidence-based practice guidelines, prepared by the Hungarian Pancreatic Study Group]. *Orv. Hetil.* 156, 244–261. doi: 10.1556/OH.2015.30059
- Huang, Q. L., Qian, Z. X., and Li, H. (2010). A comparative study of the urinary trypsinogen-2, trypsinogen activation peptide, and the computed tomography severity index as early predictors of the severity of acute pancreatitis. *Hepatogastroenterology* 57, 1295–1299.
- Jakchairoongruang, K., and Arjhansiri, K. (2013). Prognostic value of contrast-enhanced computed tomography in acute pancreatitis. *Asian Biomed.* 7, 357–364. doi: 10.5372/1905-7415.0703.187
- Ju, S., Chen, F., Liu, S., Zheng, K., and Teng, G. (2006). Value of CT and clinical criteria in assessment of patients with acute pancreatitis. *Eur. J. Radiol.* 57, 102–107. doi: 10.1016/j.ejrad.2005.07.010
- Khanna, A. K., Meher, S., Prakash, S., Tiwary, S. K., Singh, U., Srivastava, A., et al. (2013). Comparison of Ranson, Glasgow, MOSS, SIRS, BISAP, APACHE-II, CTSI scores, IL-6, CRP, and procalcitonin in predicting severity, organ failure, pancreatic necrosis, and mortality in acute pancreatitis. *HPB Surg.* 2013:367581. doi: 10.1155/2013/367581
- Kumar, S., Jalan, A., Patowary, B. N., and Bhandari, U. (2017). To access the role of serum procalcitonin in predicting the severity of acute pancreatitis. *Kathmandu Univ. Med. J. (KUMJ)*. 15, 19–24.
- Lankisch, P. G., Apte, M., and Banks, P. A. (2015). Acute pancreatitis. *Lancet* 386, 85–96. doi: 10.1016/S0140-6736(14)60649-8
- Lautz, T. B., Turkel, G., Radhakrishnan, J., Wyers, M., and Chin, A. C. (2012). Utility of the computed tomography severity index (Balthazar score) in children with acute pancreatitis. *J. Pediatr. Surg.* 47, 1185–1191. doi: 10.1016/j.jpedsurg.2012.03.023
- Lee, K. J., Kim, H. M., Choi, J. S., Kim, Y. J., Kim, Y. S., and Cho, J. H. (2016). Comparison of predictive systems in severe acute pancreatitis according to the revised atlanta classification. *Pancreas* 45, 46–50. doi: 10.1097/MPA.0000000000000433
- Moher, D., Liberati, A., Tetzlaff, J., Altman, D. G., and Group, P. (2009). Preferred reporting items for systematic reviews and meta-analyses: the PRISMA statement. *PLoS Med.* 6:e1000097. doi: 10.1371/journal.pmed.100097
- Mortele, K. J., Wiesner, W., Intriore, L., Shankar, S., Zou, K. H., Kalantari, B. N., et al. (2004). A modified CT severity index for evaluating acute pancreatitis: improved correlation with patient outcome. *Am. J. Roentgenol.* 183, 1261–1265. doi: 10.2214/ajr.183.5.1831261
- Papachristou, G. I., Muddana, V., Yadav, D., O'Connell, M., Sanders, M. K., Slivka, A., et al. (2010). Comparison of BISAP, Ranson's, APACHE-II, and CTSI scores in predicting organ failure, complications, and mortality in acute pancreatitis. *Am. J. Gastroenterol.* 105, 435–441; quiz 442. doi: 10.1038/ajg.2009.622
- Park, J. Y., Jeon, T. J., Ha, T. H., Hwang, J. T., Sinn, D. H., Oh, T. H., et al. (2013). Bedside index for severity in acute pancreatitis: comparison with other scoring systems in predicting severity and organ failure. *Hepatobiliary Pancreat. Dis. Int.* 12, 645–650. doi: 10.1016/S1499-3872(13)60101-0
- Parniczky, A., Kui, B., Szentesi, A., Balazs, A., Szucs, A., Moszbacher, D., et al. (2016). Prospective, multicentre, nationwide clinical data from 600 cases of acute pancreatitis. *PLoS ONE* 11:e0165309. doi: 10.1371/journal.pone.0165309

- Qiu, L., Sun, R. Q., Jia, R. R., Ma, X. Y., Cheng, L., Tang, M. C., et al. (2015). Comparison of existing clinical scoring systems in predicting severity and prognoses of hyperlipidemic acute pancreatitis in Chinese patients: a retrospective study. *Medicine (Baltimore)*. 94:e957. doi: 10.1097/MD.0000000000000957
- Raghuwanshi, S., Gupta, R., Vyas, M. M., and Sharma, R. (2016). CT evaluation of acute pancreatitis and its prognostic correlation with CT severity index. *J. Clin. Diagn. Res.* 10, TC06–TC11. doi: 10.7860/JCDR/2016/19849.7934
- Ranson, J. H., and Pasternack, B. S. (1977). Statistical methods for quantifying the severity of clinical acute pancreatitis. *J. Surg. Res.* 22, 79–91. doi: 10.1016/0022-4804(77)90045-2
- Ryu, J. K. (2009). [Evaluation of severity in acute pancreatitis]. *Korean J. Gastroenterol.* 54, 205–211. doi: 10.4166/kjg.2009.54.4.205
- Sahu, B., Abbey, P., Anand, R., Kumar, A., Tomer, S., and Malik, E. (2017). Severity assessment of acute pancreatitis using CT severity index and modified CT severity index: correlation with clinical outcomes and severity grading as per the Revised Atlanta Classification. *Indian J. Radiol. Imaging* 27:152. doi: 10.4103/ijri.IJRI\_300\_16
- Sharma, V., Rana, S. S., Sharma, R. K., Kang, M., Gupta, R., and Bhasin, D. K. (2015). A study of radiological scoring system evaluating extrapancreatic inflammation with conventional radiological and clinical scores in predicting outcomes in acute pancreatitis. *Ann. Gastroenterol.* 28, 399–404.
- Simchuk, E. J., Traverso, L. W., Nukui, Y., and Kozarek, R. A. (2000). Computed tomography severity index is a predictor of outcomes for severe pancreatitis. *Am. J. Surg.* 179, 352–355. doi: 10.1016/S0002-9610(00)00375-5
- Sternby, H., Hartman, H., Johansen, D., Thorlacius, H., and Regner, S. (2017). IL-6 and CRP are superior in early differentiation between mild and non-mild acute pancreatitis. *Pancreatol.* 17, 550–554. doi: 10.1016/j.pan.2017.05.392
- Szentesi, A., Toth, E., Balint, E., Fanczal, J., Madacsy, T., Laczko, D., et al. (2016). Analysis of research activity in gastroenterology: pancreatitis is in real danger. *PLoS ONE* 11:e0165244. doi: 10.1371/journal.pone.0165244
- Vriens, P. W., Van De Linde, P., Slotema, E. T., Warmerdam, P. E., and Breslau, P. J. (2005). Computed tomography severity index is an early prognostic tool for acute pancreatitis. *J. Am. Coll. Surg.* 201, 497–502. doi: 10.1016/j.jamcollsurg.2005.06.269
- Wolff, R. F., Moons, K. G. M., Riley, R. D., Whiting, P. F., Westwood, M., Collins, G. S., et al. (2019). PROBAST: a tool to assess the risk of bias and applicability of prediction model studies. *Ann. Intern. Med.* 170, 51–58. doi: 10.7326/M18-1376
- Working Group IAP/APA Acute Pancreatitis Guidelines. (2013). IAP/APA evidence-based guidelines for the management of acute pancreatitis. *Pancreatol.* 13, e1–15. doi: 10.1016/j.pan.2013.07.063
- Wu, B. U., Johannes, R. S., Sun, X., Tabak, Y., Conwell, D. L., and Banks, P. A. (2008). The early prediction of mortality in acute pancreatitis: a large population-based study. *Gut* 57, 1698–1703. doi: 10.1136/gut.2008.152702
- Xu, H., Ebner, L., Jiang, S., Wu, Y., Christe, A., Zhang, S., et al. (2014). Retrocrural space involvement on computed tomography as a predictor of mortality and disease severity in acute pancreatitis. *PLoS ONE* 9:e107378. doi: 10.1371/journal.pone.0107378
- Yadav, J., Yadav, S. K., Kumar, S., Baxla, R. G., Sinha, D. K., Bodra, P., et al. (2016). Predicting morbidity and mortality in acute pancreatitis in an Indian population: a comparative study of the BISAP score, Ranson's score and CT severity index. *Gastroenterol. Rep. (Oxf)* 4, 216–220. doi: 10.1093/gastro/gov009
- Yang, L., Liu, J., Xing, Y., Du, L., Chen, J., Liu, X., et al. (2016). Comparison of BISAP, Ranson, MCTSI, and APACHE II in predicting severity and prognoses of hyperlipidemic acute pancreatitis in Chinese patients. *Gastroenterol. Res. Pract.* 2016:1834256. doi: 10.1155/2016/1834256
- Yang, Y.-X., and Li, L. (2016). Evaluating the ability of the bedside index for severity of acute pancreatitis score to predict severe acute pancreatitis: a meta-analysis. *Med. Princ. Pract.* 25, 137–142. doi: 10.1159/000441003
- Yeung, Y. P., Lam, B. Y., and Yip, A. W. (2006). APACHE system is better than Ranson system in the prediction of severity of acute pancreatitis. *Hepatobiliary Pancreat. Dis. Int.* 5, 294–299.
- Yue, W., Liu, Y., Ding, W., Jiang, W., Huang, J., Zhang, J., et al. (2015). The predictive value of the prealbumin-to-fibrinogen ratio in patients with acute pancreatitis. *Int. J. Clin. Pract.* 69, 1121–1128. doi: 10.1111/ijcp.12682
- Zhao, B., Chen, Y., Sun, W. W., Chen, W. W., Ma, L., Yang, Z. T., et al. (2016). Effect of S100A12 and soluble receptor for advanced glycation end products on the occurrence of severe acute pancreatitis. *J. Dig. Dis.* 17, 475–482. doi: 10.1111/1751-2980.12364

**Conflict of Interest Statement:** The authors declare that the research was conducted in the absence of any commercial or financial relationships that could be construed as a potential conflict of interest.

Copyright © 2019 Mikó, Vigh, Mátrai, Soós, Garami, Balaskó, Czako, Mosdósi, Sarlós, Eröss, Tenk, Rostás and Hegyi. This is an open-access article distributed under the terms of the Creative Commons Attribution License (CC BY). The use, distribution or reproduction in other forums is permitted, provided the original author(s) and the copyright owner(s) are credited and that the original publication in this journal is cited, in accordance with accepted academic practice. No use, distribution or reproduction is permitted which does not comply with these terms.