

Pseudothrombus deposition accompanied with minimal change nephrotic syndrome and chronic kidney disease in a patient with Waldenström's macroglobulinemia: A case report

Mercy Julian Mwamunyi, Hong-Yan Zhu, Chun Zhang, Ya-Pei Yuan, Li-Jun Yao

ORCID number: Mercy Julian Mwamunyi (0000-0003-2898-3101); Hong-Yan Zhu (0000-0002-1098-5427); Chun Zhang (0000-0002-5802-350X); Ya-Pei Yuan (0000-0002-5986-6402); Li-Jun Yao (0000-0002-2414-1946).

Author contributions: Mwamunyi MJ and Zhu HY contributed equally to this paper; Mwamunyi MJ contributed to manuscript drafting and reviewed the literature; Zhu HY performed the pathological interpretation; Zhang C as a hematologist treated the patient; Yuan YP translated the patient's details; Yao LJ as the supervisor treated the patient and was responsible for the revision of the manuscript for relevant intellectual content; all authors issued final approval for the version to be submitted.

Informed consent statement: The study participant provided informed written consent before study enrollment.

Conflict-of-interest statement: The authors declare that they have no conflict of interest.

CARE Checklist (2016) statement: The authors have read the CARE Checklist (2013), and the manuscript was prepared and revised according to the CARE Checklist (2016).

Open-Access: This article is an open-access article which was selected by an in-house editor and fully peer-reviewed by external reviewers. It is distributed in

Mercy Julian Mwamunyi, Hong-Yan Zhu, Ya-Pei Yuan, Li-Jun Yao, Department of Nephrology, Union Hospital, Tongji Medical College, Huazhong University of Science and Technology, Wuhan 430022, China

Chun Zhang, Department of Hematology, Union Hospital, Tongji Medical College, Huazhong University of Science and Technology, Wuhan 430022, China

Corresponding author: Li-Jun Yao, MBBS, MD, PhD, Professor, Department of Nephrology, Union Hospital, Tongji Medical College, Huazhong University of Science and Technology, 1277 Jiefang Road, Wuhan 430022, Hubei Province, China. drylj@hotmail.com

Telephone: +86-27-85726713

Fax: +86-27-85726194

Abstract

BACKGROUND

Waldenström's macroglobulinemia (WM) is a rare lymphoid neoplasia, which can have renal complications. These rarely occur, and most common renal manifestations are mild proteinuria and microscopic hematuria. Herein we describe a case of WM that presented with pseudothrombi depositing in capillaries associated with minimal change nephrotic syndrome and chronic kidney disease (CKD).

CASE SUMMARY

A 52-year-old man presented with features suggesting nephrotic syndrome. Extensive workups were done, and there were elevated serum levels of interleukin-6 and vascular endothelial growth factor (VEGF), capillary pseudothrombus accumulation associated with minimal change nephrotic syndrome, CKD, and WM. Treatment was directed at the patient's WM with bortezomib, thalidomide, and dexamethasone whereby serum immunoglobulin M (IgM) decreased. The damage of IgM on the kidney was corrected; thus, the patient's proteinuria and serum creatinine had improved. The patient is still under clinical follow-up.

CONCLUSION

It is essential for clinicians to promptly pay more attention to patients presenting with features of nephrotic syndrome and do extensive workups to come up with a proper therapy strategy.

accordance with the Creative Commons Attribution Non Commercial (CC BY-NC 4.0) license, which permits others to distribute, remix, adapt, build upon this work non-commercially, and license their derivative works on different terms, provided the original work is properly cited and the use is non-commercial. See: <http://creativecommons.org/licenses/by-nc/4.0/>

Manuscript source: Unsolicited manuscript

Received: April 17, 2019

Peer-review started: April 18, 2019

First decision: June 19, 2019

Revised: June 24, 2019

Accepted: July 20, 2019

Article in press: July 20, 2019

Published online: August 26, 2019

P-Reviewer: Wang YQ

S-Editor: Cui LJ

L-Editor: Wang TQ

E-Editor: Liu JH



Key words: Waldenström's macroglobulinemia; Pseudothrombi; Nephrotic syndrome; Chronic kidney disease; Case report

©The Author(s) 2019. Published by Baishideng Publishing Group Inc. All rights reserved.

Core tip: The occurrence of the association among plasma immunoglobulin M level, proteinuria, and plasma creatinine level has not been reported to our knowledge. The case presents an essential for clinicians to promptly pay more attention to patients presenting with features of nephrotic syndrome and do extensive workups to come up with a proper therapy strategy.

Citation: Mwamunyi MJ, Zhu HY, Zhang C, Yuan YP, Yao LJ. Pseudothrombus deposition accompanied with minimal change nephrotic syndrome and chronic kidney disease in a patient with Waldenström's macroglobulinemia: A case report. *World J Clin Cases* 2019; 7(16): 2393-2400

URL: <https://www.wjgnet.com/2307-8960/full/v7/i16/2393.htm>

DOI: <https://dx.doi.org/10.12998/wjcc.v7.i16.2393>

INTRODUCTION

Waldenström's macroglobulinemia (WM) firstly described by J Waldenström in 1944, accounting for 2% of all hematological malignancies. As a rare lymphoid neoplasia, WM was interpreted primarily by bone marrow infiltration and immunoglobulin M (IgM) monoclonal gammopathy secreted in serum^[1,2]. It affects three per million people per year and more prevalent in Caucasian males with an average age of 64 years at diagnosis^[3]. The World Health Organization (WHO) classified WM as lymphoplasmacytic lymphoma (LPL) secreting IgM proteins, belonging to the non-Hodgkin B lymphomas (NHL)^[4].

Clinical manifestations are linked to the deposition of IgM in various organs, which may result in hepatomegaly, splenomegaly, and lymphadenopathy. High titers of IgM results in hyperviscosity syndrome with associated complications^[5]. Renal complications rarely occur, but the most common renal manifestations are mild proteinuria and microhematuria^[5,6]. Among all patients, less than 3% develop end-stage renal disease. Moreover, nephrotic syndrome is seldom seen in WM. Few reports have described that the occurrence of nephrotic syndrome is less than 7% of patients with WM^[7].

We herein present an unusual case of WM that presented with pseudothrombi depositing in capillaries associated with minimal change nephrotic syndrome and chronic kidney disease (CKD).

CASE PRESENTATION

Chief complaints and history of present illness

A 52-year-old Chinese man presented with a sudden onset of edema affecting the face and bilateral lower limbs, abdominal distension after eating, and weight gain (7 kg in 10 d).

History of present illness

His medical history was notable for nephrotic syndrome.

History of past illness

The patient denied a history of trauma. However, he had a kidney stone diagnosed in 2005.

Physical examination

The physical examination showed bilateral lower extremity edema in the absence of hepatosplenomegaly and lymphadenopathy. His blood pressure was 147/94 mmHg.

Laboratory examinations

Hemoglobin 14.2 g/dL [Normal (N) 13.5-17.5 g/dL], white blood cells (WBC) 7.76

G/L (N 4.5-11.0 G/L), red blood cells (RBC) 4.44 T/L (N 4.7-6.1T/L), lymphocytes 18.2% (N 20%-40%), neutrophils 74.6% (N 40%-60%), monocytes 5.9% (N), eosinophils 1% (N), platelets count 376 g/L 9 (N), urea 8.82 mmol/L (N 2.5-7.1 mmol/L), creatinine 211 μ mol/L (N 60-110 μ mol/L), glomerular filtration rate (GFR) 34.8 mL/min, calcium 2.12 mmol/L (N 2.2-2.7 mmol/L), uric acid 253.2 μ mol/L (N), chloride 111.9 mmol/L (N 98-106 mmol/L), albumin 19.9 g/L (N 35-55 g/L), globulin 59.0g/L (N 20-35 g/L), urine glucose 1+, urine occult blood 3+, urine protein 3+, urine WBC 167/ μ L (N < 11/ μ L), urine RBC 147/ μ L (N < 14/ μ L), urine epithelial cells 19/ μ L (N < 6/ μ L), urine kappa 1140 mg/L (N < 19 mg/L), urine lambda 367 mg/L (N < 50 mg/L), and urine nitrates were negative. Blood glucose, liver function tests, lipids, coagulation, hepatitis B virus, and hepatitis C virus markers were normal.

Thyroid function parameters were: FT3 1.8 pmol/L (N 2.6-5.7 pmol/L), FT4 6.6 pmol/L (N 9-19.18 pmol/L), and thyroid stimulating hormone 10.78 μ IU/mL (N 0.35-4.94 μ IU/mL). Elevated serum cytokines included vascular endothelial growth factor (VEGF)-A 93.92 pg/mL (N 1.09-39.23 pg/mL), interleukin-6 (IL-6) 23.52 pg/mL (N 1.32-4.72 pg/mL), MIF 24.65 pg/mL (N 3.99-7.93 pg/mL), and MIP-1a 109.72 pg/mL (N 6.93-18.57 pg/mL); the rest were normal. Serum β -2 microglobulins 4.8 mg/L (N 1.0-3.0 mg/L), C3 0.739 g/L (N 0.790-1.520 g/L), and C4 were normal. Serum immunoglobulin and light chains were as follows: IgG 1.81 g/L (N 7.51-15.60 g/L), IgA 0.79 g/L (N 0.82-4.53 g/L), IgM 41.9 g/L (N 0.460-3.040 g/L), serum kappa 4.89 g/L (N 1.70-3.70 g/L), and serum lambda 0.32 g/L (N 0.90-2.10 g/L). Bence-Jones proteinuria was negative.

Imaging examinations

Renal imaging revealed that the left kidney was about 9 cm x 5.4 cm in size and right kidney about 9.5 cm x 4.8 cm. Renal perfusion decreased with no obstruction, and GFR decreased to 34.8 mL/min.

Echocardiographic findings suggested decreased left ventricular diastolic function in the ascending aorta.

Chest computed tomography (CT) showed left ventricular failure, mild edema in both lungs, and mild bilateral pleural effusion.

Whole body bone single photon emission CT showed a slight increase in the concentration of the bone-imaging agent in the upper and lower jaw. The left posterior sixth rib-imaging agent was less and evenly distributed. The other parts of the bone-imaging agent were evenly distributed, and no abnormal changes were noted in the double kidneys and bladder. These findings reflected enhanced bone metabolism limited to the mandible; bone metabolism in the sixth ribs was slightly decreased and no apparent changes were observed in the metabolism of other bones in the body.

Bone marrow histology showed active hematopoietic tissue proliferation with an increasing focal ratio of lymphocytes and plasmacytes.

Bone marrow fluorescence *in situ* hybridization test was normal. Bone marrow immunohistochemical staining results were: CD34 (-), CD117 (-), TDT (-), MP0 (+), CD3 (-) CD10 (-), CD20 (\pm), CD61 (+), κ (\pm), and λ (-).

Bone marrow immunophenotyping test did not detect any monoclonal lymphocytes or monoclonal plasmacytes with abnormal phenotype.

Renal biopsy

On light microscopy, the most extensive section showed 28 glomeruli that were non-lobulated and non-sclerotic, with one glomerular capillary loop shrunken, and their walls were slightly thickened with a small number of layers. The volume of residual glomeruli increased; generally, the number of cells was 80-120 per glomerulus, mesangial cells and mesangial matrix were slightly increased, capillary loops were open, and the number of infiltrating cells was < 3/glomeruli, mainly mononuclear cells. Red cells and "pseudothrombi" were seen in several capillary loops. One capillary loop was embedded into the urinary pole (Figure 1).

The periodic Schiff-Methenamine (PASM) and Masson staining showed that a large number of fuchsinophilic depositions were found in the basement membrane and under the endothelium. The tubulointerstitium presented moderate lesions. Diffuse turbidity, granular degeneration, and partial small and fine vacuolar degeneration were found in the tubular epithelial cells. Some small vessels were atrophic, and the basement membrane of tubules was thicker (Figure 2).

Alkaline Congo red staining was negative. Electron microscopy revealed diffused effacement of podocyte foot processes, and only mild mesangial hyperplasia and a few electron dense deposits (Figure 3).

There was no clear immunoglobulin or deposition of complement components under the immunofluorescence microscope.

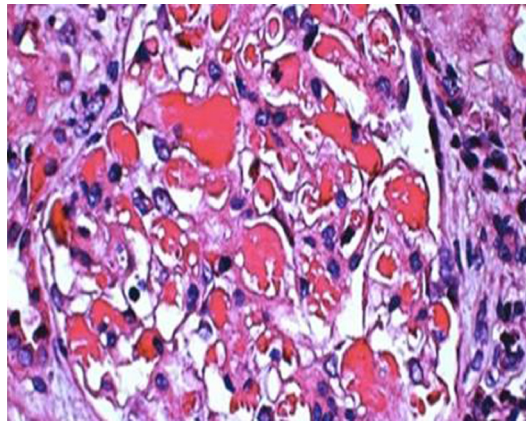


Figure 1 Light microscopy. The volume of residual glomeruli increased, the number of cells was 80-120 per glomerulus, mesangial cells and mesangial matrix were slightly increased, capillary loops were open, and the number of infiltrating cells was < 3 per glomeruli, mainly mononuclear cells. Red blood cells and "pseudothrombi" could be seen in several capillaries. One capillary loop was embedded into the urinary pole (HE staining; magnification, ×600).

FINAL DIAGNOSIS

A diagnosis of WM associated with minimal change nephrotic syndrome was made. Furthermore, the decreased GFR caused by capillary occlusion was diagnosed as CKD.

TREATMENT

The patient was treated with atorvastatin, human albumin, torsemide, alprostadil, levothyroxine, bortezomib, thalidomide, and dexamethasone. At the time of this report, the patient responded to the above therapy and has stabilization of renal function. [Table 1](#) shows the chemotherapy treatment regimen used.

OUTCOME AND FOLLOW-UP

He is being on our required regular clinic follow-up since diagnosis. He has remained stable.

DISCUSSION

Renal involvement associated with WM is scarce compared to multiple myeloma, due to rare hypercalcemia and less Bence-Jones proteinuria. As few as 3.8%-7.4% of the patients advanced to renal failure in autopsies of WM patients. Its etiology is still unclear; however, the most recent theory is autoimmune sensitivity to self-antigens. Although proteinuria and microhematuria are not limited, the frequency of nephrotic syndrome is reported to be less than 7%. Minimal change nephrotic syndrome is a common complication of Hodgkin's lymphoma but rarely seen in patients with WM. To date, only four WM cases have been previously reported in the literature^[3,8-10]. In WM, a T lymphocyte disorder that leads to a decreased CD4/CD8 ratio and abnormal secretion of lymphokines has been published and may be associated with the occurrence of minimal change nephrotic syndrome^[11].

In this case, light microscopy showed a large number of pseudothrombi deposited in the capillaries of the patient's kidney, together with diffused effacement of podocyte foot processes observed by electron microscopy. In addition, our patient also presented with proteinuria, indicating that this was minimal change nephrotic syndrome accompanied with pseudothrombus deposition. We also believe that proteinuria was a result of pseudothrombus deposition in the glomeruli capillary. The pathophysiology of renal pseudothrombi associated with WM is unknown, but there are some mechanisms suggesting that WM patients are known to have an elevated risk of venous thrombosis^[12]. Complications of WM include hyperviscosity and raised von Willebrand factor^[13]. Additionally, the paraprotein may act as an antiphospholipid antibody; interactions of the paraprotein with the local renal

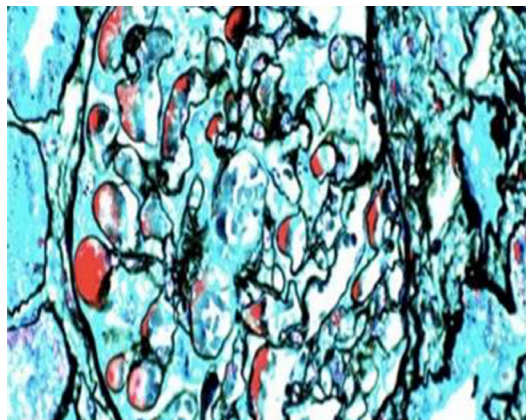


Figure 2 Light microscopy. Periodic Schiff-Methenamine (PASM) and Masson staining. Fuchsinophilic depositions were found in the basement membrane and under the endothelium. The tubulointerstitium exhibited moderate lesions, with acute lesions on chronic damage. There was diffuse turbidity and granular degeneration in the tubular epithelial cells. Partial tubular epithelial cells presented small and fine vacuolar degeneration, and the basement membrane of tubules became thicker. Brush border of the tubules was absent. Protein casts could be seen in some lumens. The renal interstitial region could be found to be focally enlarged, and fibrosis index was 1+. Individual arterioles presented segmental hyalinosis (PASM and Masson staining; magnification, $\times 400$).

microvasculature or the complement system could all contribute to a prothrombotic state, thus damaging the endothelial cells, disrupting the glomerular microcirculation, and hence lowering GFR^[14], whereby our patient's GFR was 34.8 mL/min, BUN was 8.82 $\mu\text{mol/L}$, and creatinine was 211 $\mu\text{mol/L}$. Besides, the patient had mild interstitial fibrosis, and we could not find monocyte, eosinophil, or plasmacyte infiltration in the interstitial area as compared with the results of other reports^[15]. Thus, the declined GFR seen on this patient might have resulted from WM induced hyperviscosity.

One intriguing finding of our case was that serum IgM level correlates with proteinuria and serum creatinine. After the first circle of bortezomib, thalidomide, and dexamethasone therapy, the plasma IgM level decreased by 55%, plasma creatinine decreased by 29%, and plasma albumin increased by 23%. Thus, high levels of serum IgM are not only a diagnostic criterion for WM, but also a clinical parameter of WM associated kidney damage. Unlike the normal pathophysiology of podocyte injury, coagulation can also cause podocyte effacement and proteinuria. Immunofluorescence microscopy did not show immunoglobulin or deposition of complement components even though the patient's serum IgM was ten times more, which was 41.9 g/L. Some reports suggest that the absence of IgM deposition in the renal biopsy together with high serum levels of monoclonal IgM can be due to glomerular basement membrane being repaired as a result of the combined treatment, so renal IgM deposition will disappear^[16]. In our case, the patient did not receive any treatment before his diagnosis, which suggested that kidney dysfunction was not a prerequisite for IgM deposition.

Electron microscopy only showed mesangial hyperplasia and a few electron dense deposits; however, others have shown significant proliferation in the mesangial, epithelial, and endothelial cells of the matrix, and a lot of dense depositions in the GBM, Bowman's capsule, and tubular basement wall^[17].

We have shown here, for the first time, that a WM patient had elevated serum IL-6 and VEGF-A, and recent studies have shown that IL-6 and VEGF-A levels in the sera of WM patients were abnormal compared with nonmalignant subjects. Malignant B cells secrete detectable levels of these cytokines^[18]. Nonetheless, it is important also to note that elevated plasma cytokines can be observed in CKD as well and mostly caused by increased production derived from oxidative stress, chronic inflammation, and fluid overload. Concurrently, decreased clearance of IL-6 due to impaired renal function also contributes to its accumulation^[19]. Furthermore, elevated serum VEGF-A was linked to diabetic nephropathy and glomerular diseases in humans, and proteinuria, glomerulomegaly, glomerular basement membrane thickening, mesangial expansion, loss of slit diaphragms, and podocyte effacement were associated with increased kidney VEGF-A content in adult mice overexpressing VEGF164^[20]. This appears to be the first case to report elevated serum levels of IL-6 and VEGF in a patient with WM and CKD associated with pseudothrombi. Therefore, it remains unclear whether IL-6 and VEGF elevation is caused by CKD or WM in this patient. To our knowledge, no study has yielded any suggestions regarding this association, so this question remains to be further determined.

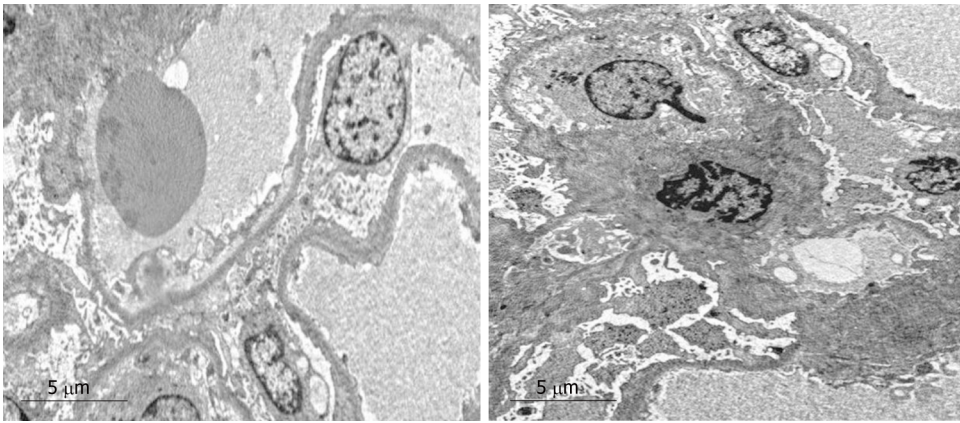


Figure 3 Electron microscopy. Extensive effacement of podocyte foot processes, slight hyperplasia of mesangial matrix, and small amounts of electron dense depositions were observed in the mesangial area. Interstitial fibrosis of the kidney was obvious, and inflammatory cell infiltration was seen.

Regarding the treatment of WM, chemotherapy with a combination of bortezomib, thalidomide, and dexamethasone as shown in [Table 1](#) was a success, and complete remission was achieved in case of minimal change nephrotic syndrome occurring in the setting of WM. This treatment achieved hematological remission, thus suppressing serum IgM, hyperviscosity, and nephrotic range proteinuria, as observed in our case. Renal complications disappeared, podocyte efficiency was recovered, and proteinuria remission was ameliorated.

CONCLUSION

We present a rare case of WM with accumulation of lots of pseudothrombi deposited in the capillaries, associated with minimal change nephrotic syndrome and CKD due to capillary occlusion.

Table 1 Chemotherapy regimen

Chemotherapy cycle	Chemotherapy drugs used	Workups before chemotherapy	Workups after chemotherapy
First cycle; 3/5-17/5/2018	Bortezomib 2.5 mg, dexamethasone 20 mg, and thalidomide tablets 100 mg	CBC: WBC $7.03 \times 10^9/L$, Hb 114 g/L, PLT $360 \times 10^9/L$; LFT and RFT: Albumin 11.7 g/L, globulin 57.7 g/L, ALT and AST were normal, urea 10 mmol/L, creatinine 167.0 $\mu\text{mol/L}$, serum β -2 microglobulins; 2.54 mg/L; TFT: TSH 10.31 $\mu\text{IU/mL}$, FT3 2.11 pmol/L, FT4 7.7 pmol/L; Serum Igs: IgM > 66.42 g/L, IgG < 1.41 g/L, IgA, C3, and C4 were normal. ESR 114 mm/h; CRP < 5.00 mg/L; Urinalysis: Urine protein 2+, occult blood 1+, RBC count 181/ μL , 24-h urine protein 1600.50 mg/24 h	CBC: WBC $26.37 \times 10^9/L$, Hb 104 g/L, PLT $112 \times 10^9/L$, neutrophils 9.8%; LFT and RFT: Albumin 24.9 g/L, globulin 47.5 g/L, ALT and AST were normal, urea 7.1 mmol/L, creatinine 118 $\mu\text{mol/L}$; ESR 123 mm/h; Serum Igs: IgM 44.66 g/L
Second cycle; 4/6-17/6/2018	Bortezomib 2.2 mg, dexamethasone 20 mg, and thalidomide tablets 100 mg	CBC: WBC $10.8 \times 10^9/L$, Hb 113 g/L, PLT $637 \times 10^9/L$; Urinalysis: Urine protein 1+; LFT and RFT: Albumin 30.1 g/L, globulin 33.8 g/L, ALT and AST were normal, urea 5.6 mmol/L, creatinine 112 $\mu\text{mol/L}$, serum β -2 microglobulins; 3.07 mg/L; Serum Igs: IgM 23.75 g/L, IgA 0.55 g/L, IgE was low; ESR 100 mm/h	CBC: WBC $24.2 \times 10^9/L$, neutrophils 83.7%, Hb 110 g/L, PLT 158 g/L; LFT and RFT: albumin 32 g/L, globulin 22 g/L, ALT and AST were normal, urea 5.4 mmol/L, creatinine 92 $\mu\text{mol/L}$, serum β -2 microglobulins 1.77 mg/L; Serum Igs: IgM 19.9 g/L; ESR 98 mm/h
Third cycle; 4/7-16/7/2018	Bortezomib 2.2 mg, dexamethasone 20 mg, and thalidomide tablets 100 mg	CBC: WBC $10.39 \times 10^9/L$, Hb 115 g/L, PLT $482 \times 10^9/L$; Urinalysis: Urine protein was negative; LFT and RFT: Albumin 38 g/L, globulin 29.8 g/L, urea, creatinine, and serum β -2 microglobulins were normal; Serum Igs: IgM 19.04 g/L; ESR 109 mm/h	CBC: WBC $15.38 \times 10^9/L$, neutrophils 80.7%, Hb 116 g/L, PLT $219 \times 10^9/L$; LFT and RFT: Albumin 37.8 g/L, globulin 32.7 g/L, urea, creatinine, and serum β -2 microglobulins were normal
Fourth cycle; 2018.1.8	Bortezomib 2.2 mg, dexamethasone 20 mg, and thalidomide 100 mg	CBC: WBC $8.5 \times 10^9/L$, Hb 115 g/L, PLT $461 \times 10^9/L$, Urinalysis: Urine protein was negative LFT and RFT: Albumin 37.9 g/L, globulin 34.6 g/L, urea, creatinine, and serum β -2 microglobulins were normal; Serum Igs: IgM 20.46 g/L; ESR 98 mm/h	

CBC: Complete blood count; LFT: Liver function test; RFT: Renal function test; ESR: Erythrocyte sedimentation rate; TFT: Thyroid function test; CRP: C-reactive protein.

REFERENCES

- Owen RG, Treon SP, Al-Katib A, Fonseca R, Greipp PR, McMaster ML, Morra E, Pangalis GA, San Miguel JF, Branagan AR, Dimopoulos MA. Clinicopathological definition of Waldenström's macroglobulinemia: consensus panel recommendations from the Second International Workshop on Waldenström's Macroglobulinemia. *Semin Oncol* 2003; **30**: 110-115 [PMID: 12720118 DOI: 10.1053/sonc.2003.50082]
- Gnemmi V, Leleu X, Provot F, Moulounguet F, Buob D. Cast nephropathy and light-chain deposition disease in Waldenström macroglobulinemia. *Am J Kidney Dis* 2012; **60**: 487-491 [PMID: 22721930 DOI: 10.1053/j.ajkd.2012.01.030]
- Grabe DW, Li B, Haqqie SS. A Case of Nephrotic Syndrome With Minimal-Change Disease and Waldenström's Macroglobulinemia. *J Clin Med Res* 2013; **5**: 481-483 [PMID: 24171061 DOI: 10.4021/jocmr1387w]
- Mazzucchelli M, Frustaci AM, Deodato M, Cairoli R, Tedeschi A. Waldenström's Macroglobulinemia: An Update. *Mediterr J Hematol Infect Dis* 2018; **10**: e2018004 [PMID: 29326801 DOI: 10.4084/MJHID.20]
- Isaac J, Herrera GA. Cast nephropathy in a case of Waldenström's macroglobulinemia. *Nephron* 2002; **91**: 512-515 [PMID: 12119489 DOI: 10.1159/000064299]
- Vijay A, Gertz M. Review in translational hematology Waldenström macroglobulinemia. *Blood J* 2018; 5096-5104 [PMID: 17303694 DOI: 10.1182/blood-5096]
- Haraguchi S, Tomiyoshi Y, Aoki S, Sakemi T. Nephrotic syndrome due to immunologically mediated hypocomplementemic glomerulonephritis in a patient of Waldenström's macroglobulinemia. *Nephron* 2002; **92**: 452-455 [PMID: 12218329 DOI: 10.1159/000063286]
- Hory B, Saunier F, Wolff R, Saint-Hillier Y, Coulon G, Perol C. Waldenström macroglobulinemia and nephrotic syndrome with minimal change lesion. *Nephron* 1987; **45**: 68-70 [PMID: 3100974 DOI: 10.1159/000184075]
- Lindström FD, Hed J, Eneström S. Renal pathology of Waldenström's macroglobulinaemia with monoclonal antiglomerular antibodies and nephrotic syndrome. *Clin Exp Immunol* 1980; **41**: 196-204 [PMID: 6777101]
- Terrier B, Buzyn A, Hummel A, Derouere B, Bollée G, Jablonski M, de Serre NP, Noël LH, Fakhouri F.

- 10 Serum monoclonal component and nephrotic syndrome--it is not always amyloidosis. Diagnosis: WM complicated by retroperitoneal and renal infiltration and associated with a minimal change disease. *Nephrol Dial Transplant* 2006; **21**: 3327-3329 [PMID: 16935908 DOI: 10.1093/ndt/gfl467]
- 11 **San Miguel JF**, Caballero MD, Gonzalez M. T-cell subpopulations in patients with monoclonal gammopathies: essential monoclonal gammopathy, multiple myeloma, and Waldenstrom macroglobulinemia. *Am J Hematol* 1985; **20**: 267-273 [PMID: 3933332 DOI: 10.1002/ajh.2830200308]
- 12 **Hultcrantz M**, Pfeiffer RM, Björkholm M, Goldin LR, Turesson I, Schulman S, Landgren O, Kristinsson SY. Elevated risk of venous but not arterial thrombosis in Waldenström macroglobulinemia/lymphoplasmacytic lymphoma. *J Thromb Haemost* 2014; **12**: 1816-1821 [PMID: 25196979 DOI: 10.1111/jth.12724]
- 13 **Hivert B**, Caron C, Petit S, Charpy C, Fankam-Siaka C, Lecocq S, Zawadzki C, Susen S, Rusu M, Duhamel A, Tournilhac O, Goudemand J, Morel P. Clinical and prognostic implications of low or high level of von Willebrand factor in patients with Waldenstrom macroglobulinemia. *Blood* 2012; **120**: 3214-3221 [PMID: 22896002 DOI: 10.1182/blood-2011-11-388256]
- 14 **Vos JM**, Gustine J, Rennke HG, Hunter Z, Manning RJ, Dubeau TE, Meid K, Minnema MC, Kersten MJ, Treon SP, Castillo JJ. Renal disease related to Waldenström macroglobulinaemia: incidence, pathology and clinical outcomes. *Br J Haematol* 2016; **175**: 623-630 [PMID: 27468978 DOI: 10.1111/bjh.14279]
- 15 **Zhihong L**, Chen H, Zeng C. Light chain deposition disease associated with Waldenstrom macroglobulinemia. *J Nephro Dialy Trans* 2012; 390-394 [DOI: 10.3969/j.issn.1006-298X.2012.04.020]
- 16 **Morel-Maroger L**, Basch A, Danon F, Verroust P, Richet G. Pathology of the kidney in Waldenström's macroglobulinemia. Study of sixteen cases. *N Engl J Med* 1970; **283**: 123-129 [PMID: 4987279 DOI: 10.1056/NEJM197007162830304]
- 17 **Fengzhong J**, Yan L, Mingtao X, Xiaoming W, Xiaoyu N. Nephrotic syndrome as the first manifestation of Fahrenheit disease. Chinese Journal of Multiple. *Org Dis Eld* 2015; **14**: 229-230 [DOI: 10.11915/j.issn.1671-5403.2015.03.053]
- 18 **Elsawa SF**, Ansell SM. Cytokines in the microenvironment of Waldenström's macroglobulinemia. *Clin Lymphoma Myeloma* 2009; **9**: 43-45 [PMID: 19362970 DOI: 10.3816/CLM.2009.n.010]
- 19 **Su H**, Lei CT, Zhang C. Interleukin-6 Signaling Pathway and Its Role in Kidney Disease: An Update. *Front Immunol* 2017; **8**: 405 [PMID: 28484449 DOI: 10.3389/fimmu.2017.00405]
- 20 **Veron D**, Reidy KJ, Bertuccio C, Teichman J, Villegas G, Jimenez J, Shen W, Kopp JB, Thomas DB, Tufro A. Overexpression of VEGF-A in podocytes of adult mice causes glomerular disease. *Kidney Int* 2010; **77**: 989-999 [PMID: 20375978 DOI: 10.1038/ki.2010.64]



Published By Baishideng Publishing Group Inc
7041 Koll Center Parkway, Suite 160, Pleasanton, CA 94566, USA
Telephone: +1-925-2238242
Fax: +1-925-2238243
E-mail: bpgoffice@wjgnet.com
Help Desk: <https://www.f6publishing.com/helpdesk>
<https://www.wjgnet.com>

