

RESEARCH ARTICLE

Open Access



Interferon- α exacerbates neuropsychiatric phenotypes in lupus-prone mice

Jing Zeng^{1†}, Xinyu Meng^{1†}, Ping Zhou¹, Zhihua Yin², Qinglian Xie³, Hong Zou³, Nan Shen^{1,2,3,4,5,6*}, Zhizhong Ye^{2*} and Yuanjia Tang^{1,2*} 

Abstract

Background: Neuropsychiatric systemic lupus erythematosis (NP-SLE) is one of the major manifestations of lupus. However, the mechanisms involved in NP-SLE are still largely unknown. The abnormal activation of the type I IFN signalling pathway is involved in SLE pathogenesis and is linked to NP-SLE, but the effect of IFN- α on NP-SLE encephalopathy has not been systematically studied.

Methods: An intravenous injection of Adv-IFN- α (10 mice, 10×10^9 vp) was administered to the IFN- α -treated group, and Adv-ctrl (10 mice, 10×10^9 vp) (ViGene Biosciences, China) was administered to the control group. Gene expression was determined by real-time quantitative polymerase chain reaction (RT-qPCR). Enzyme-linked immunosorbent assay (ELISA) was used to detect antibodies in the serum, and urinary protein levels were measured with a BCA Protein Assay kit. Haematoxylin-eosin (H&E) and periodic acid-Schiff (PAS)-light green staining were used for kidney histology. The elevated plus-maze test, novelty-suppressed feeding assay, open-field test, tail suspension test, social dominance tube test, three-chamber social interaction test, step-down passive avoidance test and novelty Y-maze task were used to assess behaviour.

Results: In this study, we performed a series of behavioural tests to assess the neuropsychiatric phenotypes of IFN- α -treated NZB/NZW F1 mice and found that these mice developed a series of mental disorders such as anxiety-like phenotypes, depression-like phenotypes, deficits in sociability and cognitive impairments, which mimic the neuropsychiatric manifestations of NP-SLE, with a consistent onset and progression.

Conclusions: Our research verified that IFN- α plays a critical role in NP-SLE and provides a comprehensive NP-SLE mouse model for dissecting the mechanisms of NP-SLE and developing novel therapies for intervention.

Keywords: Lupus, Autoimmunity, Cytokines, Neuropsychiatric SLE (NP-SLE)

Introduction

Systemic lupus erythematosis (SLE) is a complex systemic autoimmune disease characterized by a loss of immune tolerance to self-antigens, resulting in inflammation and severe end-organ damage. Almost all organ systems can be affected, with disease manifestations and severity displaying heterogeneity within and between patients and ranging from the common involvement of skin and joints

to life-threatening renal or neuropsychiatric SLE (NP-SLE) [1, 2]. As one of the most debilitating and potentially fatal manifestations of lupus, NP-SLE is associated with poor prognosis, more cumulative organ damage, anxiety, depression, sociability deficits, cognitive impairment and seizures [3–5].

Despite years of study, the aetiology of NP-SLE is still largely unclear. The abnormal activation of the type I interferon (IFN) pathway has received particular attention for its role in the pathogenic mechanisms underlying SLE; the role of this pathway was initially demonstrated by the induction of a signature of IFN inducible genes in human monocytes exposed to SLE sera [6] and then further corroborated by gene expression microarray studies of peripheral blood cells in SLE [7–10]. Meanwhile, the abnormal

* Correspondence: nanshensibs@gmail.com; yezhezong@126.com; tangyuanjia028@163.com

[†]Jing Zeng and Xinyu Meng contributed equally to this work.

¹Shanghai Institute of Rheumatology, Renji Hospital, Shanghai Jiao Tong University School of Medicine, 145 Shan Dong Road (c), Shanghai, China

²Shenzhen Futian Hospital for Rheumatic Diseases, 22 Nong Lin Road, Shenzhen, China

Full list of author information is available at the end of the article



activation of the type I interferon (IFN) pathway has also been demonstrated to be closely related to NP-SLE onset and development. The connection between IFN- α and human mental disorders was first identified in patients who frequently exhibited neurotoxicity and neuropsychiatric side effects such as anxiety, depression, irritability, a lack of motivation and impaired memory after receiving a high dose of IFN- α [11, 12]. Similar mental disorders have also been observed in healthy volunteers and mice peripherally administered IFN- α [12–14], and abnormal levels of IFN- α in the sera and cerebrospinal fluid (CSF) of patients have been observed [15, 16], supporting the direct interaction between IFN- α and behavioural symptoms. However, the effect of IFN- α on the overall phenotype of NP-SLE encephalopathy remains undefined.

In efforts to explore the potential mechanisms and enhance the development of novel therapeutics, numerous mouse models of SLE, including genetically predisposed mouse strains, such as the NZB/NZW F1 strain and its NZM derivatives, the MRL/lpr strain and the lupus-prone 564Igi strain, as well as inducible systems and humanized mouse models of lupus, have been used [17–20]. These models share lupus-like phenotypes including proteinuria, elevated serum dsDNA antibodies, antinuclear antibodies (ANAs), anti-ribosomal P antibodies (anti-P) to immunoglobulin G (IgG)-containing immune complex deposits in the kidneys and renal failure. However, in terms of NP-SLE, none of these models exhibit all of the clinical symptoms found in SLE patients. For example, the 564Igi strain exhibits anxiety-like behaviour and motor and coordination defects but lacks a depression-like phenotype [20]; the MRL/lpr strain exhibits depression-like behaviour and deficits in cognitive function without anxiety-like behaviour [21]; and NZB/NZW F1 mice exhibit congenital structural abnormalities of the brain and mental disorders such as increased anxiety-like behaviours and decreased locomotor activity [22]. The NZB/NZW F1 mouse model, which relies on inbred mouse strains, exhibits delayed and inconsistent disease onset, with SLE-related symptoms usually not appearing until 5–6 months of age; this remains a distinct limitation of this classic model. Recently, an injection of an adenovirus expressing IFN- α (Adv-IFN- α) in 12- to 13-week-old NZB/W F1 mice was found to accelerate the main clinical symptoms of SLE, making IFN- α -accelerated NZB/NZW F1 mouse models a useful tool to explore the intricate pathogenesis of SLE [23]. To date, studies on the IFN- α -accelerated NZB/NZW F1 model have provided many new target molecules for SLE, such as miR-130b as a negative regulator in the IFN pathway [24], a Btk inhibitor as a B cell regulator [25] and Ox40 as a molecule involved in a novel pathogenic pathway of SLE [26]. However, no study has revealed the association between the IFN- α -accelerated NZB/NZW F1 mouse model and NP-SLE.

In the present study, we characterized the behavioural profile of the IFN- α -accelerated NZB/NZW F1 mouse model. Compared with the control group, IFN- α -treated lupus-prone mice exhibited more serious mental disorders, including anxiety-like phenotypes, depression-like phenotypes, decreased aggression, abnormal social interaction and impaired cognitive performance and long-term memory, which mimic the overall phenotypes of NP-SLE encephalopathy. Our findings demonstrated that IFN- α -accelerated NZB/NZW F1 mice can serve as a comprehensive NP-SLE mouse model.

Methods

Animals

Female NZB/NZW F1 mice (strain 100,008) aged 12–13 weeks and weighing 30 ± 2 g were purchased from the Jackson Laboratory and maintained at the Shanghai Institutes for Biological Sciences, Chinese Academy of Sciences. The mice were kept in a regulated environment (23 ± 1 °C, $40 \pm 60\%$ humidity) under a 12-h light/12-h dark cycle and free access to laboratory chow and water. The mice were treated at the age of 12 weeks with a single intravenous injection of Adv-IFN- α (10 mice; 10×10^9 vp) for the IFN- α -treated group or Adv-ctrl (10 mice; 10×10^9 vp) (ViGene Biosciences, China) for the control group, as previously described [23]. Urine was tested weekly for proteinuria by the BCA assay. Behavioural experiments were performed when the mice were 20 weeks of age. The levels of anti-dsDNA, ANAs and anti-P antibodies in the serum were measured by ELISA. All of the surviving mice were sacrificed at 24 weeks of age. All animal protocols were approved by the Animal Care and Use Committee of the Renji Hospital.

Proteinuria measurement

The mice were housed in metabolic cages, and their urine was collected over a 24-h period. Urinary protein was measured with a BCA Protein Assay kit according to the manufacturer's instructions (Tiangen Biotech). The samples were measured in duplicate with three to 10 animals per group.

ELISA

Serum was obtained from 24-week-old mice, and the levels of anti-dsDNA, ANAs and anti-P antibodies were measured with anti-dsDNA, ANA and anti-P ELISA kits (Inova Diagnosis) according to the manufacturer's instructions. The samples were measured in duplicate with 3 to 10 animals per group.

Real-time qPCR

Total RNA was isolated using TRIzol reagent (Invitrogen). Gene expression was assayed using TB Green Premix Ex Taq reagent (TAKARA) according to the manufacturer's

protocol and normalized to GAPDH mRNA levels. All experiments were assayed on an ABI ViiA 7 Real-Time PCR System (Applied Biosystems). All primers for SYBR Green real-time qPCR were synthesized by Sangon Biotech. The primers are as follows: mmu-IFN- α -forward (5'-3'), ATG GCT AGG CCC TTT GCT TTC; mmu-IFN- α -reverse, CTG TGT ACC AGA GGG TGT AGT T; mmu-CXCL10-forward, GAC GGT CCG CTG CAA CTG; mmu-CXCL10-reverse, GCT TCC CTA TGG CCC TCA TT; mmu-IL-6-forward, CCA GTT GCC TTC TTG GGA CT; mmu-IL-6-reverse, GTC TCC TCT CCG GAC TTG TG; mmu-GAPDH-forward, CAG AAC ATC ATC CCT GCA TC; and mmu-GAPDH-reverse, CTG CTT CAC CAC CTT CTT GA.

Kidney histology

Kidneys were fixed in formalin and embedded in paraffin. The blocks were sectioned at 2.5 μ m. Two kidney sections were prepared. One was stained with haematoxylin-eosin (H&E), and the other was stained with periodic acid-Schiff (PAS)-light green staining. The slides were identified with the animal number and then examined under a microscope at $\times 400$ magnification (Nikon, Japan) by a researcher blinded to treatment and proteinuria levels.

Behavioural experiments

All behavioural experiments were performed between 9:00 and 17:00 in a soundproof and air-regulated experimental room, to which the mice were habituated at least 30 min before each test. There was at least 1 day between each behavioural test and the next. The mice were tested in random order. Following testing, the apparatus was cleaned with 70% ethanol and water to remove olfactory traces.

Elevated plus-maze test

The elevated plus-maze test is used to evaluate anxiety-like phenotypes [27]. The apparatus consisted of two open Plexiglas arms ($l \times w$, 78 cm \times 5 cm) and two enclosed Plexiglas arms ($l \times w \times h$, 78 cm \times 5 cm \times 20 cm). The arms of the same type were located opposite one another and extended from a central platform ($l \times w$, 7.5 cm \times 7.5 cm), and the maze was elevated to a height of 60 cm above the floor. The test was carried out in dim ambient lighting (~ 5 lx) for 5 min. The test mouse was placed in the centre of the platform facing an open arm and was allowed to explore. In this test, when all four paws of the mouse were in an arm, an entry was recorded. Activity in the open arm was used to represent anxiety-like behaviour. The total distance travelled was used as a measure of general locomotor activity.

Novelty-suppressed feeding assay

The novelty suppressed feeding assay is a conflict test that elicits competing motivations between the drive to eat and the fear of venturing into the centre of a brightly lit arena [28]. The apparatus consisted of a square base ($l \times w$: 60 cm \times 60 cm) with a small pre-weighed food chow pellet (normal chow) placed in the centre of the arena on a small fixed glass dish. During the test, the brightness level of the lights above the apparatus was increased to the highest level (~ 35 lx). The mice were individually placed in a clean cage without food 18 h before testing. Feeding was defined as the mouse grabbing the pellet and starting to eat. The mouse was removed after 10 min and then placed alone in its home cage for 5 min with another pre-weighed piece of chow. At the end of the 5-min period, the amount of food consumed was also measured. The latency for a mouse to approach and eat a familiar food in a novel environment following an extended period (16–24 h) of food deprivation was used as an index of anxiety-like behaviour. Food consumption was used to test whether the experimental condition altered appetite or motivation to eat.

Open-field test

The open-field test was used to assess the locomotor and exploratory activity of the mice when they were placed in an unfamiliar environment [29, 30]. The open-field chambers ($l \times w \times h$, 60 cm \times 60 cm \times 60 cm) were made of Plexiglas with a non-reflective square base, and the centre area (30 cm \times 30 cm) was marked. The area between the background and 80% of the centre area (48 cm \times 48 cm) was defined as the margin area. For each testing session, a mouse was placed individually in the centre of the arena and allowed to freely explore the environment for 30 min. The total distance travelled (mm) was used as a measurement of general locomotor activity.

Tail suspension test

The tail suspension test was used to establish a despair and helpless situation to test depression-like behaviours in mice [31, 32]. At the start of the experiment, a mouse was suspended by its tail 90 cm above the floor. During the test (6-min trial), the behaviour of the mouse was recorded, and any period in which the mouse stopped struggling for ≥ 1 s was considered freezing. The latency to freezing and the total freezing time in the last 4 min were measured manually in a blinded manner.

Social dominance tube test

The social dominance tube test was used to measure the dominance of animals [33]. The test was conducted in a testing tube ($l \times$ internal diameter, 30.5 cm \times 2.5 cm), through which only one mouse can pass. Sex-matched and weight-matched test mice that were unfamiliar with

each other were used. Before the test trials, all mice were adapted to the testing tube by being guided across the testing tube in alternating directions. All mice were confirmed to be free to pass through the tube. After training and habituation, the mice were randomly placed at opposite ends of the test tube and released at the same time so that the mice were able to meet in the middle of the tube. Ten consecutive trials were performed with a maximum time of 3 min per trial. During the trial, if one mouse backed out of the tube and all four of its paws were outside of the tube, the trial ended, and that mouse lost. Matches lasting more than 3 min were scored as a draw and excluded from the analysis. Mice were considered socially dominant if they won more than 50% of the trials.

Three-chamber social interaction test

The three-chamber social interaction test was used to assess sociability and preference for social novelty [33, 34]. The test was performed in a rectangular apparatus made of white Plexiglas ($l \times w \times h$, 66 cm \times 40 cm \times 24 cm) that contained three equally sized chambers with a gate ($l \times w$, 6 cm \times 4 cm) between the chambers. The right and left chambers each had a wire cage that was 11 cm in height and 9 cm in diameter. The test was started by placing a mouse into one of the cages. The following behaviours were scored: the amount of time spent and the distance travelled in each chamber of the three-chamber arena and the amount of time spent and the distance travelled in close proximity (within 3 cm) of the wire cage.

Step-down passive avoidance test

The step-down passive avoidance test was used to assess the learning and memory capacity of the mice [35]. The test was performed in a Plexiglas cage ($l \times w \times h$, 20 cm \times 20 cm \times 20 cm) with a small platform ($l \times w \times h$, 8 cm \times 8 cm \times 1.5 cm) in the corner. The experiment began with a training session in which each mouse was placed on the platform. When the mouse stepped down on the grid door with its four paws, footshocks (50 V) lasting 5 s were delivered to the grid floor. The mouse was again placed on the platform. If the mouse stayed on the platform for at least 3 min, it was considered to remember the shock. If the mouse failed to stay on the platform for at least 3 min for 2 times, it was excluded. Two hours and 24 h later, the mouse was placed on the platform again. The latency to step down with a cutoff of 10 min was measured. The shocks were not delivered to the grid door during the two sessions in which the mouse stepped down. The following two parametric measures of retention were measured manually in a blinded manner: the latency to step down and the number of mice that reached the avoidance criterion.

Novelty Y-maze task

The novelty Y-maze task was used to assess short-time spatial recognition working memory in mice by measuring spontaneous alternations [36, 37]. The maze consisted of three arms (one starting arm and two testing arms); each arm was 31 cm long, 5 cm wide and 10 cm high with a central area in the shape of an equilateral triangular. Each arm had markers of different colours as distinct visual cues and a removable partition to block the appropriate arm. The test consisted of two sessions, and at the beginning of each session, the test mouse was placed in the same starting arm. However, in the first session, only the starting arm and one testing arm (also known as familiar arm (fa)) were open, while the second testing arm (also known as novel arm (na)) was blocked by the partition. The blocked arm was randomized and balanced for each test mouse. The test mouse was placed in the starting arm and allowed to explore the open testing arm for 5 min. The mouse was then returned to its home cage for a 30-min interval. After the maze was cleaned and the partition was removed, the test mouse was placed in the starting arm again and allowed to explore the two testing arms for another 5 min. For each test mouse, the percentage of time spent exploring and distance travelled in the novel arm during the second session was calculated using the following formula: $\text{percentage of time/distance} = \text{time or distance in na} / (\text{time or distance in na} + \text{time or distance in fa}) \times 100$.

Statistical analyses

We used TopScan Lite software (CleverSys, Inc.) to record, track and analyse the tests. In the elevated plus-maze test, the number of arm entries as well as the total time spent and distance travelled in the open, closed and centre compartments was analysed; in the novelty-suppressed feeding assay, the latency to the first feeding event for each mouse was analysed; in the open-field test, mouse behaviour during the test period was analysed; and in the three-chamber social interaction test, the performance of each mouse was analysed. GraphPad Prism 7 software (Graph-Pad Software, Inc.) was used for data analysis.

Results

IFN- α treatment induced autoimmune status in NZB/NZW F1 mice

As a complex and common autoimmune disease, SLE is characterized by highly diverse clinical manifestations, and the prevalent IFN signature is considered one of the most robust biomarkers. Previous studies have found that IFN- α treatment promotes SLE pathogenesis in NZB/NZW F1 mice.

Consistent with the literature, in our study, we observed that IFN- α -treated mice exhibited significantly

higher levels of anti-dsDNA and ANAs (Fig. 1a, b) as well as increased proteinuria (Additional file 1: Figure S1a) compared to those in control mice (Adv-ctrl-treated mice). Haematoxylin-eosin (H&E) and periodic acid-Schiff (PAS) staining were performed to assess global kidney morphology (Additional file 1: Figure S1b), and more serious pathological changes of the renal glomerulus were observed in IFN- α -treated mice. In addition, IFN- α treatment resulted in significantly higher levels of anti-P (Fig. 1c), which is associated with SLE-related psychiatric and nephritic manifestations [38]. In addition, real-time qPCR analysis also showed the upregulation of IFN- α , IL-6 and CXCL10, which are factors associated with inflammation of the brain [39–42], in the brain tissue of IFN- α -treated NZB/NZW mice compared to control mice (Additional file 2: Figure S2).

The abovementioned results all confirm that the injection of Adv-IFN- α in NZB/NZW F1 mice accelerated the main clinical symptoms of SLE and resulted in corresponding inflammation in the brain and kidneys of mice, suggesting that it activated autoimmune status. To further verify whether the mice had corresponding behavioural changes, we conducted a series of subsequent investigations.

Increased anxiety-like phenotypes in IFN- α -treated NZB/NZW F1 mice

Anxiety is one of the main mental symptoms of the neuropsychiatric manifestations of lupus. To assess whether the IFN- α -treated NZB/NZW F1 mouse model can serve as a model of NP-SLE, we performed the elevated plus-maze test, the novelty-suppressed feeding assay and the open-field test to examine anxiety-related behavioural phenotypes.

In the elevated plus-maze test, the level of anxiety-like phenotypes was measured based on the time spent in and the number of entries into the open arms. Less time spent in and fewer entries into the open arms indicated anxiety [27]. Compared to control mice, IFN- α -treated

mice spent significantly less time and travelled a shorter distance in the open arms (Fig. 2b, Additional file 3: Figure S3b). The frequency of entry into the open arms (Additional file 3: Figure S3d) was also strongly reduced in the IFN- α -treated mice group, but there was no significant difference in the total distance travelled in (Additional file 3: Figure S3a) or the number of entries (Additional file 3: Figure S3c) into either the open or closed arms. These results suggested that IFN- α -treated mice avoided the aversive open arms of the maze.

In the novelty-suppressed feeding assay, the latency of each mouse to approach and eat a familiar food was used as an index of anxiety-like behaviour with longer latency indicating anxiety [43]. As shown in Fig. 2c, the latency to feeding increased sharply in IFN- α -treated mice. Moreover, no differences in food consumption in the home cage were observed among the groups (Fig. 2d).

In the open-field test, no significant differences were observed in the total distance travelled between the two groups (Additional file 3: Figure S3e), indicating that IFN- α treatment had no influence on locomotor activity. In the open-field test, the time spent in, number of entries into and distance travelled in the centre area and margin area are indices of anxiety-like behaviours in mice. Compared with control mice, IFN- α -treated mice travelled a longer distance in the margin area (Additional file 3: Figure S3f) and spent less time in (Fig. 2f) and made fewer entries into the centre area (Additional file 3: Figure S3g), suggesting anxiety-like behaviour.

Taken together, our data demonstrate that IFN- α treatment resulted in increased anxiety-like phenotypes in NZB/NZW F1 mice, which is similar to NP-SLE.

IFN- α treatment induced depression-like behaviours in NZB/NZW F1 mice

To further evaluate the NP-SLE phenotypes of this model, we monitored depression-like behaviours in NZB/NZW F1 mice with the tail suspension test. The freezing duration

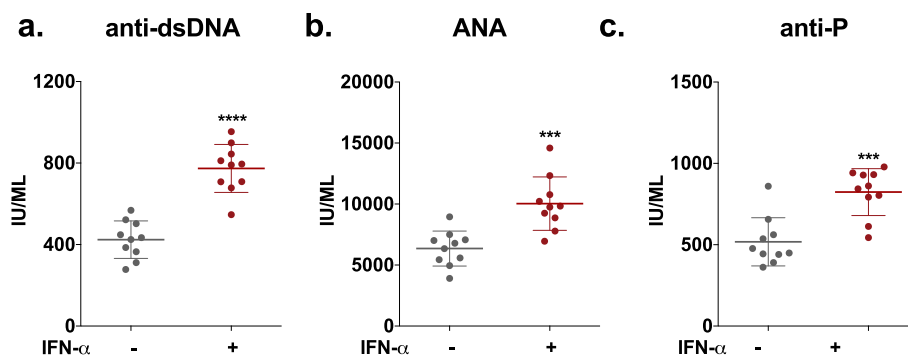


Fig. 1 Effect of IFN- α on antibodies in NZB/NZW F1 mice. **a** Serum levels of antibodies reactive to double-stranded DNA (dsDNA), as detected by ELISA. **b** Serum levels of antibodies reactive to ANAs, as detected by ELISA. **c** Serum levels of antibodies reactive to anti-P, as detected by ELISA. Number of animals per group = 10. * P < 0.05, ** P < 0.01, *** P < 0.005, **** P < 0.001 vs. Adv-ctrl-treated group, unpaired t test

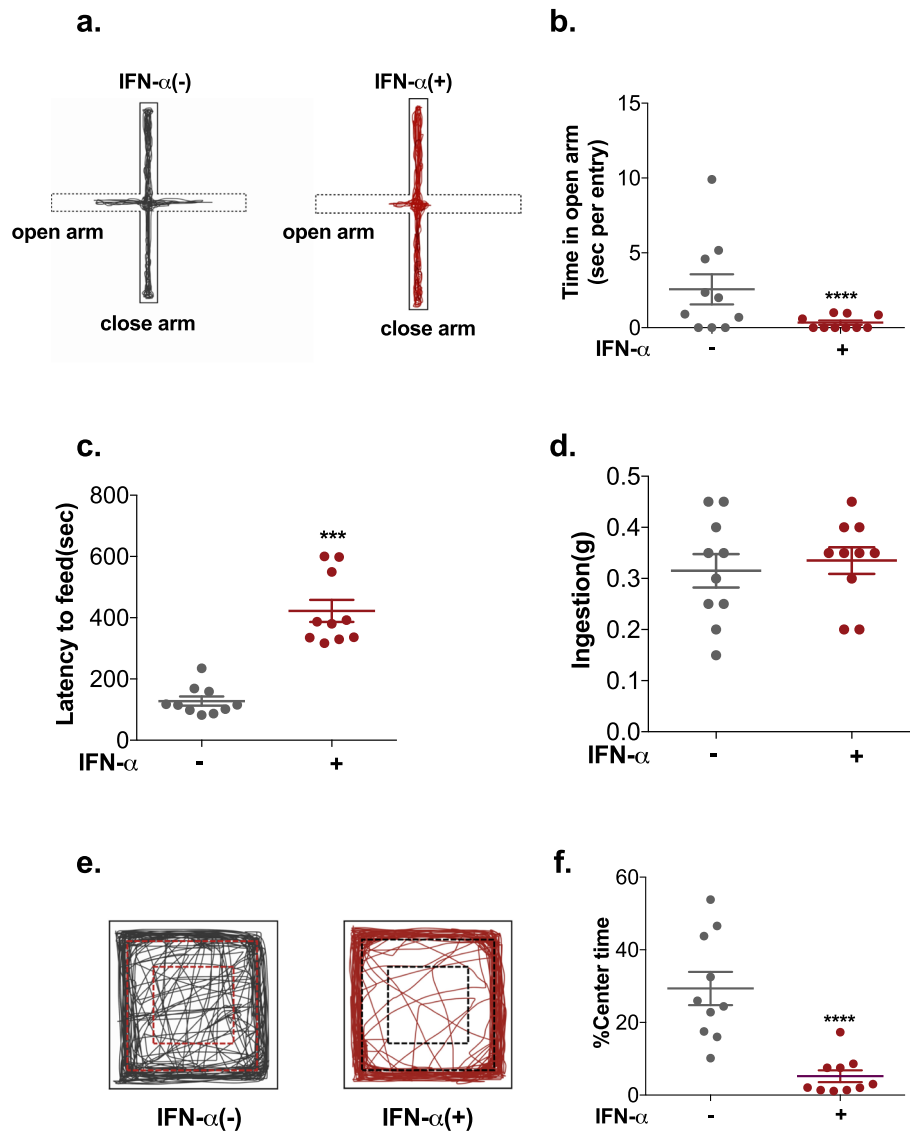


Fig. 2 Effect of IFN- α on anxiety-like phenotypes in NZB/NZW F1 mice, as assessed by the elevated plus-maze test, novelty-suppressed feeding assay and open-field test. **a** Representative activity traces of a control mouse and an IFN- α -treated mouse in the elevated plus-maze-test. **b** Time spent in the open arms per entry. Latency to feed (**c**) and food consumption (**d**) of the mice in the novelty-suppressed feeding assay. **e** Illustrative example of the travel path of a control mouse and an IFN- α -treated mouse in the open field. **f** Percentage of time spent in the centre of the open-field arena. Number of animals per group = 10. * $P < 0.05$, ** $P < 0.01$, *** $P < 0.005$, **** $P < 0.001$ vs. Adv-ctrl-treated group, unpaired t test

and the latency to freezing were used as measures of depression-like behaviours [31]. Compared with control mice, IFN- α -treated mice exhibited a longer duration of freezing during the tail suspension test (Fig. 3a). Similarly, the latency to freezing was also decreased significantly in the IFN- α -treated mice (Fig. 3b). These results reveal increased depressive-like behaviour in IFN- α -treated mice.

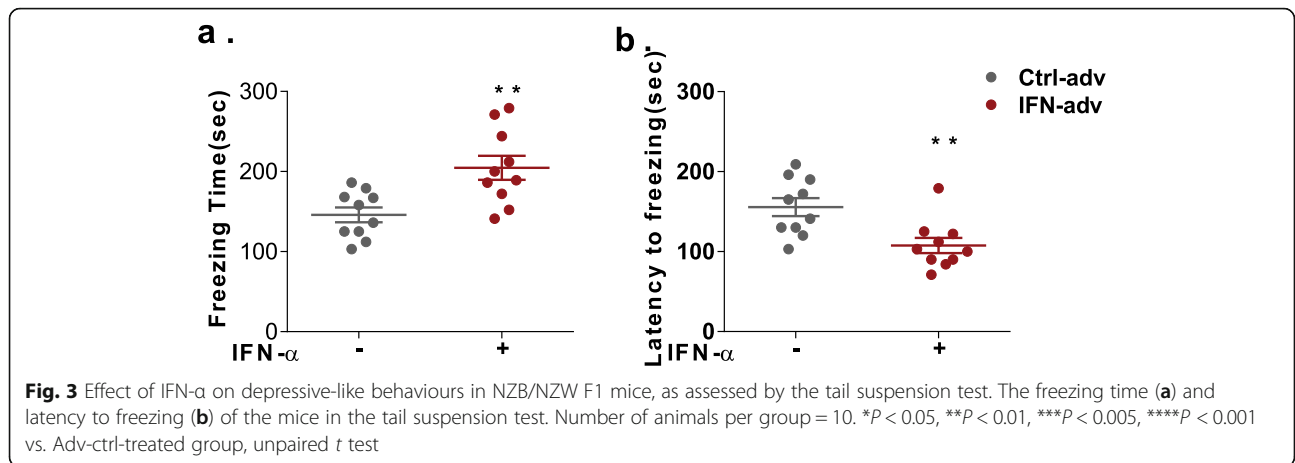
Deficits of sociability in IFN- α -treated NZB/NZW F1 mice

As impairment in social behaviours is also a common symptom of NP-SLE, we employed the social dominance

tube test and the three-chamber social test to evaluate the sociability of IFN- α -treated NZB/NZW F1 mice.

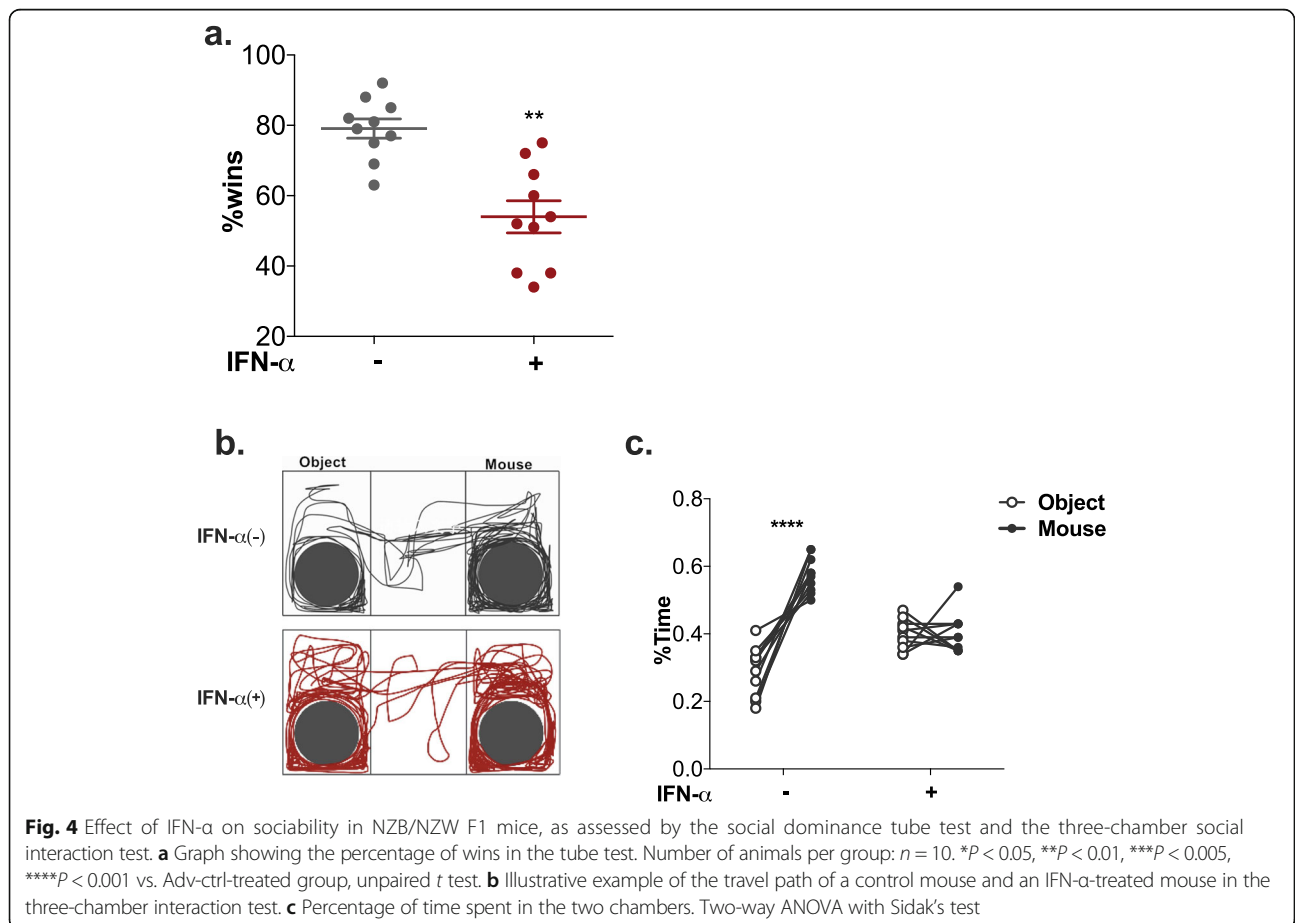
We first performed the social dominance tube test to evaluate aggression and dominance. Our results showed that the IFN- α -treated mice had a much smaller probability of winning, indicating decreased aggressive tendencies (Fig. 4a).

In the three-chamber social test, social versus empty cage preference was used to reflect the sociability of the mice. No significant differences were observed in the total distance travelled in the three chambers between IFN- α -treated mice and control mice (Additional file 4: Figure S4a), but the chamber in which they chose to stay



was obviously different. Based on the amount of time spent (Fig. 4b) and distance travelled (Additional file 4: Figure S4b) in the chambers, control mice showed a preference to stay in the chamber with the cage containing a novel mouse rather than the chamber containing an empty cage. However, IFN- α -treated mice showed no significant difference in the time spent or distance travelled in the two chambers (Fig. 4c, Additional file 4: Figure S4b).

To further analyse the direct social approach behaviours, we calculated the percentage of sniffing time and the circling distance around the cages. Based on sniffing time (Additional file 4: Figure S4c) and circling distance (Additional file 4: Figure S4d) around the cages containing a novel mouse than around the empty cage, control mice also showed significant social preference, while the IFN- α -treated mice did not.



Altogether, these results suggest that IFN- α treatment impaired sociability mice.

Long-term memory and spatial working memory deficits in IFN- α treated NZB/NZW F1 mice

We further evaluate whether IFN- α affects cognitive function in NZB/NZW F1 mice with the step-down passive avoidance test and the novelty Y-maze task.

In the step-down passive avoidance test, the latency to step down and the percentage of mice that reached the avoidance criterion were adopted as measures of memory performance [44]. As shown in Fig. 5a, we observed no difference in the latency to step down between the two groups in the short term (2 h) but a much shorter latency in the long term (24 h) than in control mice. As for the percentage of mice to reach criterion (Fig. 5b), IFN- α treatment also exerted a suppressive effect on long-term memory.

The novelty Y-maze task was used to measure the willingness of mice to explore new environments and to assess spatial recognition working memory. Mice typically prefer to investigate the novel arm of the maze rather than returning to one that was visited previously, which is assumed to represent functional working memory [36]. We examined the effect of IFN- α on short-term spatial working memory by monitoring the spontaneous alternation behaviour of mice in the Y-maze. We found little difference between groups in the total distance

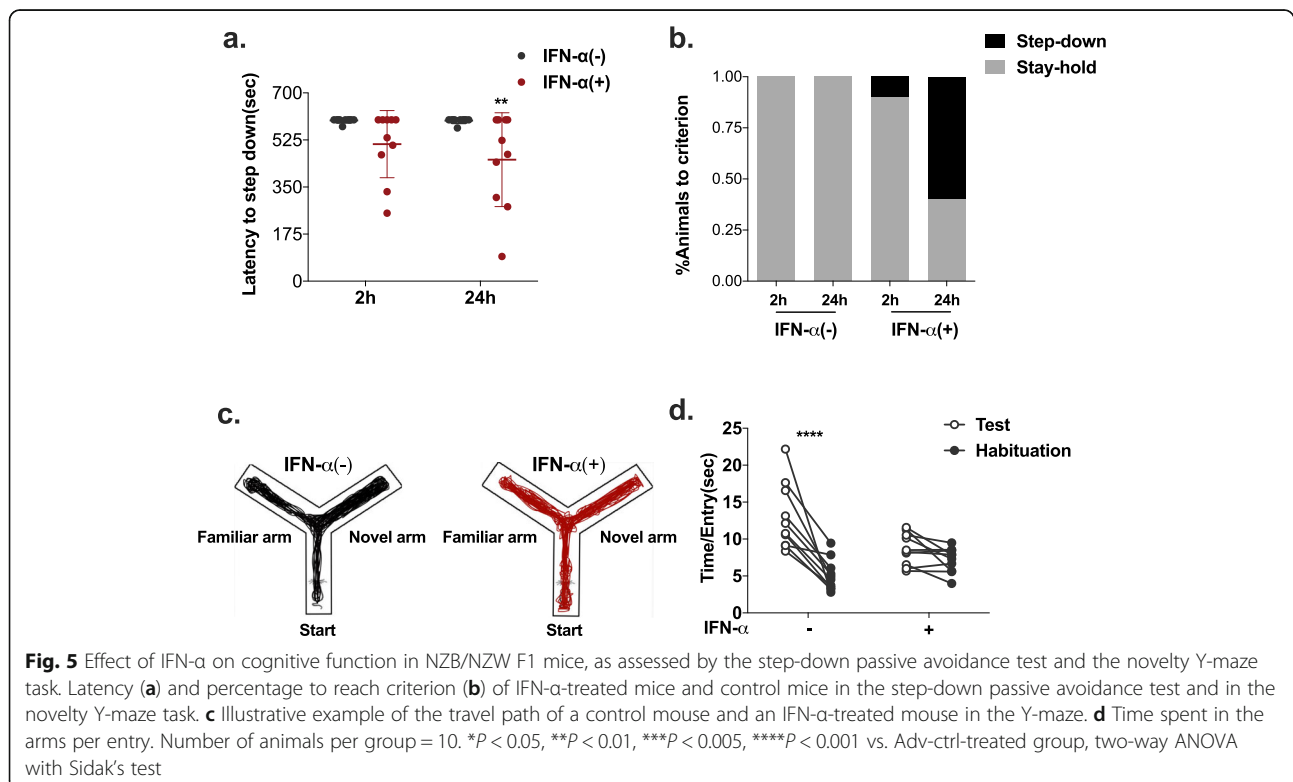
travelled (Additional file 5: Figure S5a) and the number of arm entries (Additional file 5: Figure S5b), but there was a strong regression of performance after IFN- α treatment, as determined by less time spent and distance travelled in the novel arm (Fig. 5d, Additional file 5: Figure S5c).

These findings suggest that IFN- α treatment strongly interfered with long-term memory recovery and spatial recognition working memory.

Discussion

Neuropsychiatric systemic lupus erythaematosus (NP-SLE) refers to a series of neurological and psychiatric symptoms directly related to SLE. The functional mechanism of NP-SLE remains largely elusive, and an animal model that accurately mimics the clinical presentation of NP-SLE would be indispensable. In our study, IFN- α -treated mice were found to exhibit rapid and highly synchronized onsets of SLE and psychiatric symptoms such as anxiety, depression, deficits in sociability and cognitive impairment, mimicking the neuropsychiatric manifestations of NP-SLE and providing evidence of the critical role of IFN- α in brain physiology and CNS disorders.

In recent decades, several studies have suggested that the abnormal activation of the IFN pathway participates in NP-SLE onset. By blocking type I interferon (IFN) signalling, IFN- α has been proven to drive microglia-dependent synapse loss, contributing to impaired cognitive function and sociability in lupus-prone mice [20]. The key IFN



signalling molecule STAT1 was identified by global gene profiling to be highly elevated and activated in neurons in the central nervous system [45, 46], while the IFN-stimulated gene USP18 (ubiquitin-specific protease 43 (UBP43)) was found to affect brain cell function through the regulation of the cellular levels of the ISG15 protein [47] and CXCL10 (endothelial-derived chemokine ligand)-mediated behavioural changes through the impairment of synaptic plasticity [48]. In addition, a novel and rare variant of the IFN regulatory gene TREG1 identified by whole-exome sequencing following biochemical analysis in CNS-lupus patients has been proven to result in the abnormal increase in IFN- α found in the cerebrospinal fluid (CSF) [49]. Moreover, TREG1 deficiency in IFN- α -dependent T helper 1 (Th1) cells has been found to inhibit endothelial cell (EC) angiogenesis [50]. Altogether, we proved the direct effect of IFN- α on the pathogenesis of NP-SLE, but we are still at an early stage in understanding the overall pathogenesis. It is necessary to determine whether IFN- α is involved in NP-SLE through its effects on the immune system, nervous system or both. The IFN- α -accelerated NZB/NZW F1 mouse model can be used to dissect the cellular and molecular mechanisms of NP-SLE.

The sustained activation of the type I IFN pathway is the main molecular phenotype in lupus patients. In recent studies, IFN- α -adenoviral vectors have been proven to be good candidates for gene transfer *in vivo* [51] and to induce long-lasting expression of IFN- α [23, 52, 53]. In our study, the production of IFN- α was also found to be sustained in the IFN- α -accelerated NZB/NZW F1 mouse model. Adv-IFN- α treatment synchronized and expedited SLE onset in the IFN- α -accelerated NZB/NZW F1 mouse model. The IFN- α -accelerated NZB/NZW F1 mice also showed manifestations similar to those of NP-SLE, such as anxiety-like phenotypes, depression-like behaviours, deficits in sociability and long-term memory and spatial working memory deficits. In future studies, neuropathological changes such as microglial activation, neuronal and synaptic structure, cerebrospinal fluid (CSF) profile and magnetic resonance imaging (MRI) and changes in the cerebral expression of IFN-regulated genes should be evaluated in the IFN- α -accelerated NZB/NZW F1 mouse model.

Conclusions

In conclusion, our findings provide evidence that IFN- α directly participates in NP-SLE pathogenesis and results in brain physiology and CNS disorders. In addition, with increased interest in IFN- α in NP-SLE, our study also offers a useful rodent model for research on the cellular and molecular mechanisms underlying NP-SLE.

Additional files

Additional file 1: Figure S1. Effect of IFN- α on lupus nephritis in NZB/NZW F1 mice. (a) Proteinuria, as quantified by 24-h urinary protein. (b) H&E- or PAS-stained kidney sections. Number of animals per group = 5. * P < 0.05, ** P < 0.01, *** P < 0.005, **** P < 0.001 vs. Adv-ctrl treated group, unpaired *t* test. (PDF 311 kb)

Additional file 2: Figure S2. The expression levels of IFN- α , IL-6 and CXCL10 in the brain. Number of animals per group = 5. * P < 0.05, ** P < 0.01, *** P < 0.005, **** P < 0.001 vs. Adv-ctrl treated group, 2-way ANOVA with Sidak's test. (PDF 34 kb)

Additional file 3: Figure S3. Effect of IFN- α on anxiety-like phenotypes in NZB/NZW F1 mice, as assessed by the elevated plus-maze test. (a) Total distance travelled in the elevated plus-maze. (b) Percentage of distance travelled in the open arm of the elevated plus-maze. (c) Total number of entries into the arms of the elevated plus-maze. (d) Percentage of entries into the open arms. (e) Total distance travelled in the open field arena. (f) Percentage of distance travelled in the margin area in the open field test. (g) Number of entries into the centre of the open field. Number of animals per group = 10. * P < 0.05, ** P < 0.01, *** P < 0.005, **** P < 0.001 vs. Adv-ctrl treated group, unpaired *t* test. (PDF 44 kb)

Additional file 4: Figure S4. Effect of IFN- α on sociability in NZB/NZW F1 mice, as assessed in the three-chamber social interaction test. (a) Total distance travelled in all of the three chambers. (b) Percentage of distance travelled in the two chambers. (c) Percentage of time spent (c) and distance travelled (d) around the two cages. Number of animals per group = 10. * P < 0.05, ** P < 0.01, *** P < 0.005, **** P < 0.001 vs. Adv-ctrl treated group, unpaired *t* test (a), 2-way ANOVA with Sidak's test (b, c, d). (PDF 55 kb)

Additional file 5: Figure S5. Effect of IFN- α on sociability in NZB/NZW F1 mice, as assessed by the novelty Y-maze task. (a) Total distance travelled. (b) Total number of arm entries. (c) Distance travelled in the arms per entry. Number of animals per group = 10. * P < 0.05, ** P < 0.01, *** P < 0.005, **** P < 0.001 vs. Adv-ctrl treated group, unpaired *t* test (a, b), 2-way ANOVA with Sidak's test (c). (PDF 35 kb)

Abbreviations

Adv-IFN- α : Adenovirus expressing IFN- α ; ANA: Antinuclear antibody; CNS: Central nervous system; CSF: Cerebrospinal fluid; CXCL10: Chemokine (C-X-C motif) ligand 10; dsDNA: Double-stranded DNA; ECs: Endothelial cells; HE: Haematoxylin-eosin staining; IFN: Type I interferon; IgG: Immunoglobulin G; IL-6: Interleukin-6; MRI: Magnetic resonance imaging; NP-SLE: Neuropsychiatric SLE; P: Ribosomal P; PAS: Periodic acid-Schiff; SLE: Systemic lupus erythematosis; Th1: T helper 1

Acknowledgements

We thank Yan Wang for excellent technical assistance and support for this study.

Authors' contributions

JZ, HZ and YJT conceived of and designed the experiments and analysed the data. JZ wrote the paper. JZ, XYM, PZ, HZ and QLX performed the experiments and contributed reagents, materials and analytical tools. HZ, XYM, ZHY, NS, ZZY and YJT helped draft the manuscript. All authors read and approved the final manuscript.

Funding

This work was supported by the National Natural Science Foundation of China (No. 81571576, 81871287, 31630021, and 81421001), the National Key Research and Development Program of China (No. 2017YFC0909000) and the Sanming Project of Medicine in Shenzhen.

Availability of data and materials

Not applicable.

Ethics approval

All animal experiments conformed to the animal welfare guidelines under approved protocols of the Renji Hospital, Shanghai Jiao Tong University.

Consent for publication

Not applicable.

Competing interests

The authors declare that they have no competing interests.

Author details

¹Shanghai Institute of Rheumatology, Renji Hospital, Shanghai Jiao Tong University School of Medicine, 145 Shan Dong Road (c), Shanghai, China. ²Shenzhen Futian Hospital for Rheumatic Diseases, 22 Nong Lin Road, Shenzhen, China. ³Shanghai Institutes for Biological Sciences (SIBS), Chinese Academy of Sciences (CAS), University of Chinese Academy of Sciences, 320 Yueyang Road, Shanghai, China. ⁴State Key Laboratory of Oncogenes and Related Genes, Shanghai Cancer Institute, Renji Hospital, 2200 Lane 25 Xietu Road, Shanghai, China. ⁵Collaborative Innovation Center for Translational Medicine, Shanghai Jiao Tong University School of Medicine, 197 Rui Jin Er Road, Shanghai, China. ⁶Center for Autoimmune Genomics and Etiology (CAGE), Cincinnati Children's Hospital Medical Center, 3333 Burnet Avenue, Cincinnati, OH, USA.

Received: 4 January 2019 Accepted: 20 August 2019

Published online: 03 September 2019

References

- Tsokos GC. Systemic lupus erythematosus. *N Engl J Med*. 2011;365(22):2110–21.
- Fortuna G, Brennan MT. Systemic lupus erythematosus: epidemiology, pathophysiology, manifestations, and management. *Dent Clin N Am*. 2013; 57(4):631–55.
- Feinglass EJ, Arnett FC, Dorsch CA, Zizic TM, Stevens MB. Neuropsychiatric manifestations of systemic lupus erythematosus: diagnosis, clinical spectrum, and relationship to other features of the disease. *Medicine (Baltimore)*. 1976;55(4):323–39.
- Mok CC, To CH, Mak A. Neuropsychiatric damage in southern Chinese patients with systemic lupus erythematosus. *Medicine (Baltimore)*. 2006; 85(4):221–8.
- Jeltsch-David H, Muller S. Neuropsychiatric systemic lupus erythematosus: pathogenesis and biomarkers. *Nat Rev Neurol*. 2014;10(10):579–96.
- Blanco P, Palucka AK, Gill M, Pascual V, Banchereau J. Induction of dendritic cell differentiation by IFN- α in systemic lupus erythematosus. *Science*. 2001;294(5546):1540–3.
- Crow MK, Kirou KA, Wohlgemuth J. Microarray analysis of interferon-regulated genes in SLE. *Autoimmunity*. 2003;36(8):481–90.
- Bennett L, Palucka AK, Arce E, Cantrell V, Borvak J, Banchereau J, et al. Interferon and granulopoiesis signatures in systemic lupus erythematosus blood. *J Exp Med*. 2003;197(6):711–23.
- Baechler EC, Batliwalla FM, Karypis G, Gaffney PM, Ortmann WA, Espe KJ, et al. Interferon-inducible gene expression signature in peripheral blood cells of patients with severe lupus. *Proc Natl Acad Sci U S A*. 2003;100(5):2610–5.
- Han GM, Chen SL, Shen N, Ye S, Bao CD, Gu YY. Analysis of gene expression profiles in human systemic lupus erythematosus using oligonucleotide microarray. *Genes Immun*. 2003;4(3):177–86.
- Schaefer M, Engelbrecht MA, Gut O, Fiebich BL, Bauer J, Schmidt F, et al. Interferon alpha (IFN α) and psychiatric syndromes: a review. *Prog Neuro-Psychopharmacol Biol Psychiatry*. 2002;26(4):731–46.
- Valentine AD. Managing the neuropsychiatric adverse effects of interferon treatment. *BioDrugs*. 1999;11(4):229–37.
- Makino M, Kitano Y, Hirohashi M, Takasuna K. Enhancement of immobility in mouse forced swimming test by treatment with human interferon. *Eur J Pharmacol*. 1998;356(1):1–7.
- Schrott LM, Crnic LS. Increased anxiety behaviors in autoimmune mice. *Behav Neurosci*. 1996;110(3):492–502.
- Nakamura K, Xiu Y, Ohtsuji M, Sugita G, Abe M, Ohtsuji N, et al. Genetic dissection of anxiety in autoimmune disease. *Hum Mol Genet*. 2003;12(10):1079–86.
- Shiozawa S, Kuroki Y, Kim M, Hirohata S, Ogino T. Interferon-alpha in lupus psychosis. *Arthritis Rheum*. 1992;35(4):417–22.
- Andrews BS, Eisenberg RA, Theofilopoulos AN, Izui S, Wilson CB, McConahey PJ, et al. Spontaneous murine lupus-like syndromes. Clinical and immunopathological manifestations in several strains. *J Exp Med*. 1978; 148(5):1198–215.
- Rudofsky UH, Lawrence DA. New Zealand mixed mice: a genetic systemic lupus erythematosus model for assessing environmental effects. *Environ Health Perspect*. 1999;107(Suppl 5):713–21.
- Steinberg AD, Roths JB, Murphy ED, Steinberg RT, Raveche ES. Effects of thymectomy or androgen administration upon the autoimmune disease of MRL/Mp-lpr/lpr mice. *J Immunol*. 1980;125(2):871–3.
- Bialas AR, Presumey J, Das A, van der Poel CE, Lapchak PH, Mesin L, et al. Microglia-dependent synapse loss in type I interferon-mediated lupus. *Nature*. 2017;546(7659):539–43.
- Li Y, Eskelund AR, Zhou H, Budac DP, Sanchez C, Gulinello M. Behavioral deficits are accompanied by immunological and neurochemical changes in a mouse model for neuropsychiatric lupus (NP-SLE). *Int J Mol Sci*. 2015;16(7): 15150–71.
- Dubois EL, Horowitz RE, Demopoulos HB, Teplitz R. NZB/NZW mice as a model of systemic lupus erythematosus. *Jama*. 1966;195(4):285–9.
- Mathian A, Weinberg A, Gallegos M, Banchereau J, Koutouzov S. IFN- α induces early lethal lupus in preautoimmune (New Zealand Black x New Zealand White) F1 but not in BALB/c mice. *J Immunol*. 2005;174(5):2499–506.
- Han X, Wang Y, Zhang X, Qin Y, Qu B, Wu L, et al. MicroRNA-130b ameliorates murine lupus nephritis through targeting the type I interferon pathway on renal mesangial cells. *Arthritis Rheumatol*. 2016;68(9):2232–43.
- Katewa A, Wang Y, Hackney JA, Huang T, Suto E, Ramamoorthi N, et al. Btk-specific inhibition blocks pathogenic plasma cell signatures and myeloid cell-associated damage in IFN α -driven lupus nephritis. *JCI Insight*. 2017; 2(7):e90111.
- Sitrin J, Suto E, Wuster A, Eastham-Anderson J, Kim JM, Austin CD, et al. The OX40/OX40 ligand pathway promotes pathogenic Th cell responses, plasmablast accumulation, and lupus nephritis in NZB/W F1 mice. *J Immunol*. 2017;199(4):1238–49.
- Walf AA, Frye CA. The use of the elevated plus maze as an assay of anxiety-related behavior in rodents. *Nat Protoc*. 2007;2(2):322–8.
- Blasco-Serra A, Gonzalez-Soler EM, Cervera-Ferri A, Teruel-Marti V, Valverde-Navarro AA. A standardization of the novelty-suppressed feeding test protocol in rats. *Neurosci Lett*. 2017;658:73–8.
- Walsh RN, Cummins RA. The open-field test: a critical review. *Psychol Bull*. 1976;83(3):482–504.
- Dulawa SC, Grandy DK, Low MJ, Paulus MP, Geyer MA. Dopamine D4 receptor-knock-out mice exhibit reduced exploration of novel stimuli. *J Neurosci*. 1999;19(21):9550–6.
- Cryan JF, Mombereau C, Vassout A. The tail suspension test as a model for assessing antidepressant activity: review of pharmacological and genetic studies in mice. *Neurosci Biobehav Rev*. 2005;29(4–5):571–625.
- Can A, Dao DT, Terrillion CE, Piantadosi SC, Bhat S, Gould TD. The tail suspension test. *J Visualized Experiments*. 2012;59:e3769.
- Park MJ, Seo BA, Lee B, Shin HS, Kang MG. Stress-induced changes in social dominance are scaled by AMPA-type glutamate receptor phosphorylation in the medial prefrontal cortex. *Sci Rep*. 2018;8(1):15008.
- Borland JM, Frantz KJ, Aiiani LM, Grantham KN, Song Z, Albers HE. A novel operant task to assess social reward and motivation in rodents. *J Neurosci Methods*. 2017;287:80–8.
- Kameyama T, Nabeshima T, Kozawa T. Step-down-type passive avoidance- and escape-learning method. Suitability for experimental amnesia models. *J Pharmacol Methods*. 1986;16(1):39–52.
- Dellu F, Mayo W, Cherkouvi J, Le Moal M, Simon H. A two-trial memory task with automated recording: study in young and aged rats. *Brain Res*. 1992; 588(1):132–9.
- Fu Y, Chen Y, Li L, Wang Y, Kong X, Wang J. Food restriction affects Y-maze spatial recognition memory in developing mice. *Int J Dev Neurosci*. 2017;60:8–15.
- Isshi K, Hirohata S. Association of anti-ribosomal P protein antibodies with neuropsychiatric systemic lupus erythematosus. *Arthritis Rheum*. 1996;39(9): 1483–90.
- Duarte-Delgado NP, Vasquez G, Ortiz-Reyes BL. Blood-brain barrier disruption and neuroinflammation as pathophysiological mechanisms of the diffuse manifestations of neuropsychiatric systemic lupus erythematosus. *Autoimmun Rev*. 2019;18(4):426–32.
- Nalakonda G, Islam M, Chukwu VE, Soliman A, Munim R, Abukra I. Psycho-rheumatic integration in systemic lupus erythematosus: an insight into antibodies causing neuropsychiatric changes. *Cureus*. 2018;10(8):e3091.
- Mike EV, Makinde HM, Der E, Stock A, Gulinello M, Gadhvi GT, et al. Neuropsychiatric systemic lupus erythematosus is dependent on sphingosine-1-phosphate signaling. *Front Immunol*. 2018;9:2189.
- Sukoff Rizzo SJ, Neal SJ, Hughes ZA, Beyna M, Rosenzweig-Lipson S, Moss SJ, et al. Evidence for sustained elevation of IL-6 in the CNS as a key contributor of depressive-like phenotypes. *Transl Psychiatry*. 2012;2:e199.

43. Iijima M, Fukumoto K, Chaki S. Acute and sustained effects of a metabotropic glutamate 5 receptor antagonist in the novelty-suppressed feeding test. *Behav Brain Res.* 2012;235(2):287–92.
44. Borba Filho GL, Zenki KC, Kalinine E, Baggio S, Pettenuzzo L, Zimmer ER, et al. A new device for step-down inhibitory avoidance task—effects of low and high frequency in a novel device for passive inhibitory avoidance task that avoids bioimpedance variations. *PLoS One.* 2015;10(2):e0116000.
45. Wang J, Campbell IL. Innate STAT1-dependent genomic response of neurons to the antiviral cytokine alpha interferon. *J Virol.* 2005;79(13):8295–302.
46. Wang J, Campbell IL, Zhang H. Systemic interferon-alpha regulates interferon-stimulated genes in the central nervous system. *Mol Psychiatry.* 2008;13(3):293–301.
47. Ritchie KJ, Malakhov MP, Hetherington CJ, Zhou L, Little MT, Malakhova OA, et al. Dysregulation of protein modification by ISG15 results in brain cell injury. *Genes Dev.* 2002;16(17):2207–12.
48. Blank T, Detje CN, Spiess A, Hagemeyer N, Brendecke SM, Wolfart J, et al. Brain endothelial- and epithelial-specific interferon receptor chain 1 drives virus-induced sickness behavior and cognitive impairment. *Immunity.* 2016;44(4):901–12.
49. Ellyard JJ, Jerjen R, Martin JL, Lee AY, Field MA, Jiang SH, et al. Identification of a pathogenic variant in TREX1 in early-onset cerebral systemic lupus erythematosus by whole-exome sequencing. *Arthritis Rheumatol.* 2014;66(12):3382–6.
50. Pulliero A, Marengo B, Domenicotti C, Longobardi MG, Fazzi E, Orcesi S, et al. Inhibition of neuroblastoma cell growth by TREX1-mutated human lymphocytes. *Oncol Rep.* 2012;27(5):1689–94.
51. Kochanek S. High-capacity adenoviral vectors for gene transfer and somatic gene therapy. *Hum Gene Ther.* 1999;10(15):2451–9.
52. Kim IH, Jozkowicz A, Piedra PA, Oka K, Chan L. Lifetime correction of genetic deficiency in mice with a single injection of helper-dependent adenoviral vector. *Proc Natl Acad Sci U S A.* 2001;98(23):13282–7.
53. Aurisicchio L, Delmastro P, Salucci V, Paz OG, Rovere P, Ciliberto G, et al. Liver-specific alpha 2 interferon gene expression results in protection from induced hepatitis. *J Virol.* 2000;74(10):4816–23.

Publisher's Note

Springer Nature remains neutral with regard to jurisdictional claims in published maps and institutional affiliations.

Ready to submit your research? Choose BMC and benefit from:

- fast, convenient online submission
- thorough peer review by experienced researchers in your field
- rapid publication on acceptance
- support for research data, including large and complex data types
- gold Open Access which fosters wider collaboration and increased citations
- maximum visibility for your research: over 100M website views per year

At BMC, research is always in progress.

Learn more biomedcentral.com/submissions

