

# Granzymes A and B Regulate the Local Inflammatory Response during *Klebsiella pneumoniae* Pneumonia

M. Isabel García-Laorden<sup>a</sup> Ingrid Stroo<sup>a,e</sup> Dana C. Blok<sup>a</sup> Sandrine Florquin<sup>b</sup>  
Jan Paul Medema<sup>a,c</sup> Alex F. de Vos<sup>a</sup> Tom van der Poll<sup>a,d</sup>

<sup>a</sup>Center for Experimental and Molecular Medicine (CEMM), <sup>b</sup>Department of Pathology, <sup>c</sup>Laboratory for Experimental Oncology and Radiobiology (LEXOR), <sup>d</sup>Division of Infectious Diseases, Academic Medical Center, and <sup>e</sup>Department of Immunopathology, Sanquin Research at CLB and Landsteiner Laboratory of the Academic Medical Center, University of Amsterdam, Amsterdam, The Netherlands

## Key Words

Granzymes · Pneumonia · *Klebsiella pneumoniae* · Sepsis · Mouse model

## Abstract

*Klebsiella pneumoniae* is a common cause of hospital-acquired pneumonia. Granzymes (gzms), mainly found in cytotoxic lymphocytes, have been implicated as mediators of infection and inflammation. We here sought to investigate the role of gzmA and gzmB in the host response to *K. pneumoniae*-induced airway infection and sepsis. For this purpose, pneumonia was induced in wild-type (WT) and gzmA-deficient (*gzmA*<sup>-/-</sup>), *gzmB*<sup>-/-</sup> and *gzmAxB*<sup>-/-</sup> mice by intranasal infection with *K. pneumoniae*. In WT mice, gzmA and gzmB were mainly expressed by natural killer cells. Pneumonia was associated with reduced intracellular gzmA and increased intracellular gzmB levels. Gzm deficiency had little impact on antibacterial defence: *gzmA*<sup>-/-</sup> and *gzmAxB*<sup>-/-</sup> mice transiently showed modestly higher bacterial loads in the lungs but not in distant organs. *GzmB*<sup>-/-</sup> and, to a larger extent, *gzmAxB*<sup>-/-</sup> mice displayed transiently increased lung inflam-

mation, reflected in the semi-quantitative histology scores and levels of pro-inflammatory cytokines and chemokines. Most differences between gzm-deficient and WT mice had disappeared during late-stage pneumonia. Gzm deficiency did not impact on distant organ injury or survival. These results suggest that gzmA and gzmB partly regulate local inflammation during early pneumonia but eventually play an insignificant role during pneumosepsis by the common human pathogen *K. pneumoniae*.

© 2016 The Author(s)  
Published by S. Karger AG, Basel

## Introduction

Pneumonia is the leading cause of sepsis, one of the most important causes of mortality in intensive care departments. *Klebsiella pneumoniae*, a Gram-negative bacterium, is one of the main causative pathogens in hospital-acquired pneumonia and is associated with high rates of morbidity and mortality [1, 2]. Emerging bacterial resistance to antibiotics is currently a serious problem for the effective treatment of this micro-organism [3]. It is

therefore important to gain more insight into the pathogenesis of *Klebsiella pneumoniae*; this may help to eventually develop alternative therapies.

Granzymes (gzms) are a family of serine proteases found in the granules of cytotoxic lymphocytes. In humans, 5 different gzms (A, B, H, K and M) exist, while mice express gzms A–G, K, M and N [4]. Granzyme A (gzmA) and gzmB, the most abundant gzms, are expressed constitutively in several cell types including cytotoxic T lymphocytes, natural killer (NK) cells, NK T cells and  $\gamma\delta$  T cells [5, 6]. Multiple studies have described the role of gzms in eliminating infected, neoplastic or foreign cells; however, the physiological relevance of gzmA cytotoxicity remains controversial [4]. Other evidence suggests that the properties of gzms are diverse and go beyond cytotoxicity. Plasma levels of gzmA and gzmB have been found to be elevated in patients with several parasitic, viral and bacterial diseases [7, 8], severe sepsis [9, 10] and in endotoxemia induced in healthy individuals [11]. The induction of gzmA and gzmB secretion was also shown after stimulation of whole blood with Gram-negative and Gram-positive bacteria [11]. Moreover, diverse extracellular substrates have been identified for gzms [8, 12], and a role for gzmA and gzmB has been reported in mediating cytokine release or maturation [13]. In addition, previous studies have shown that gzmA-deficient (*gzmA*<sup>-/-</sup>) and *gzmB*<sup>-/-</sup> mice are relatively protected against endotoxin-induced shock [14, 15]. Collectively, these studies suggest a role for gzms in infection and inflammation which goes beyond cytotoxicity.

Current knowledge about the role of gzms in the host response to *K. pneumoniae* and the pathogenesis of pneumonia and sepsis is highly limited. We sought to investigate this subject by analysing the local and systemic inflammatory responses and damage using a murine model of pneumonia-derived sepsis caused by *K. pneumoniae* in wild-type (WT) mice and in mice deficient in gzmA, gzmB or both.

## Materials and Methods

### Animals

C57BL/6 WT mice were purchased from Charles River Laboratories Inc. (Maastricht, The Netherlands). *gzmA*<sup>-/-</sup>, *gzmB*<sup>-/-</sup> and *gzmAxgzmB*<sup>-/-</sup> mice on a C57BL/6 background were kindly provided by Dr. M.M. Simon (Max Planck Institute, Freiburg, Germany) [16]. Experimental groups were age- and gender-matched, and housed in the Animal Research Institute, Amsterdam, under standard care. All experiments were conducted on mice that were 10–12 weeks of age. The Animal Care and Use Committee of the Academic Medical Center approved all experiments.

### Experimental Study Design

Pneumonia was induced by intranasal inoculation with  $4 \times 10^3$  colony-forming units (CFU) of *K. pneumoniae* serotype 2 (ATCC 43816; American Type Culture Collection, Manassas, Va., USA) in 50  $\mu$ l of saline solution as previously described [17, 18]. Mice were followed for a maximum of 14 days ( $n = 20$  mice per group) or, in separate experiments, euthanized at 6, 16 or 48 h after infection ( $n = 8$  mice per group). Blood was drawn into heparinized tubes, and the lung, spleen and liver were harvested and processed as described [17, 18]. To analyse induction of gzmA and gzmB, groups of WT mice were euthanized before and after infection, and blood and lung were harvested and processed for flow cytometry ( $n = 5$ ).

### Histopathology

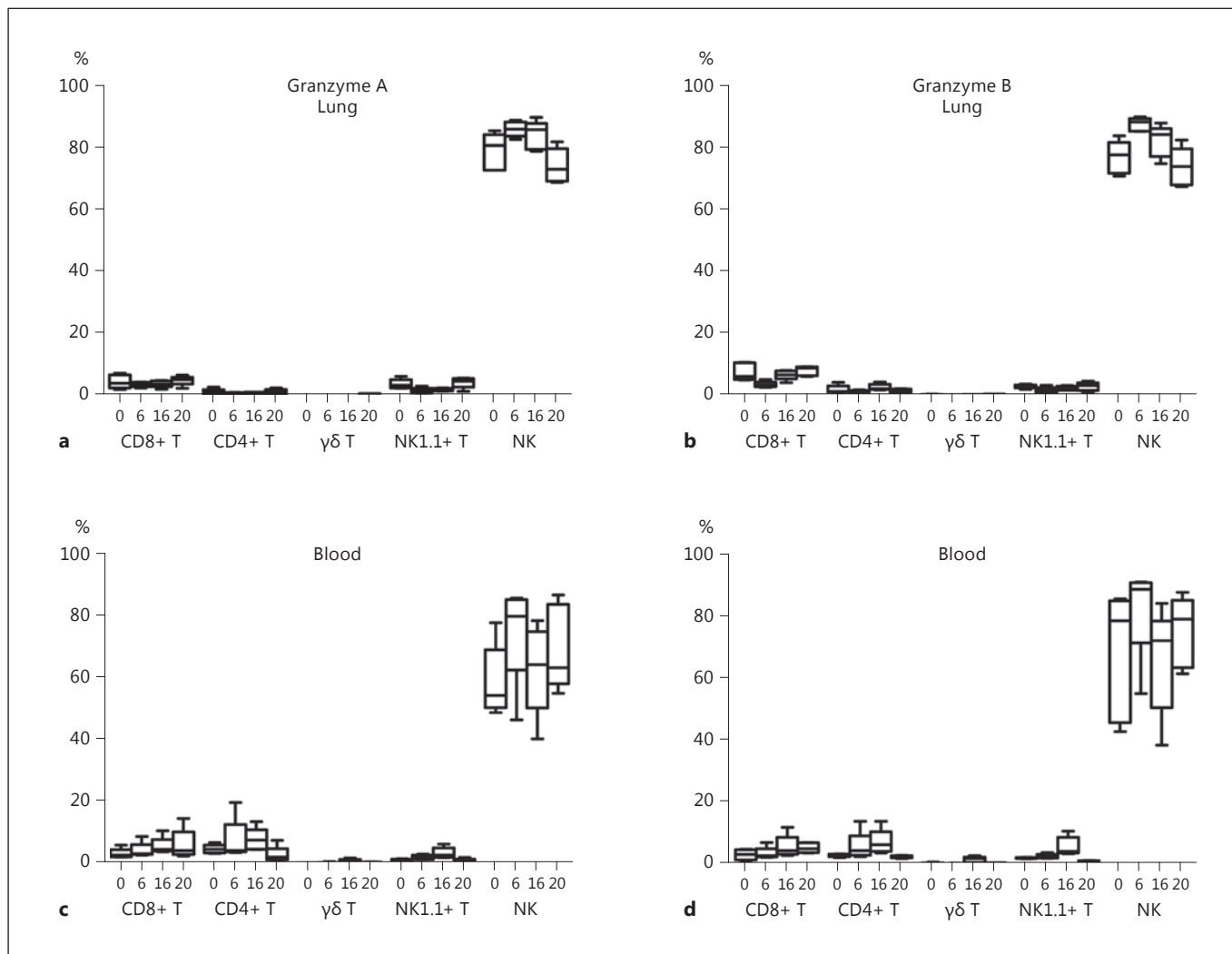
Lung sections (4  $\mu$ m thick) were stained with haematoxylin and eosin and analysed by a pathologist who was blinded for groups. To score lung inflammation and damage, a semi-quantitative scoring system of the following parameters was used [18]: interstitial inflammation, endothelialitis, bronchitis, oedema, pleuritis and the presence of thrombi. Each parameter was rated separately on a scale of 0 (condition absent) to 4 (very severe). The total lung inflammation score was expressed as the sum of the scores of the individual parameters, with a maximum of 24. In addition, pulmonary infiltrate was scored as a percentage of total lung surface occupied by confluent infiltrates. Liver injury was scored according to the following parameters: interstitial inflammation (also on a scale of 0–4), number of thrombi and the percentage of hepatocellular necrosis.

### Assays

Interleukin (IL)-6, IL-10, tumour necrosis factor (TNF)- $\alpha$ , interferon (IFN)- $\gamma$ , IL-1 $\beta$ , cytokine-induced neutrophil chemoattractant (KC, CXCL1), macrophage inflammatory protein 2 (MIP-2, CXCL2) and myeloperoxidase (MPO) were measured in the supernatants of lung homogenates by ELISA (R&D Systems, Abingdon, UK) in accordance with the manufacturer's instructions. Plasma levels of IL-6, IL-10, TNF- $\alpha$ , IFN- $\gamma$ , IL-12-p70 and monocyte chemoattractant protein 1 (MCP-1) were measured by cytometric bead array multiplex assay (BD Biosciences, San Jose, Calif., USA) according to the manufacturer's recommendations. Lactate dehydrogenase (LDH), aspartate aminotransferase (ASAT) and alanine transaminase (ALAT) levels were measured in plasma with kits from Sigma (St. Louis, Mo., USA) by a Hitachi analyser (Boehringer Mannheim, Mannheim, Germany).

### Flow Cytometry

Blood erythrocytes were lysed with ice-cold isotonic NH<sub>4</sub>Cl solution (155 mM NH<sub>4</sub>Cl, 10 mM KHCO<sub>3</sub> and 0.1 mM EDTA, pH 7.4); the remaining cells were washed and counted using a haemocytometer. Lungs were cut and digested for 30 min at 37°C in HBSS (Invitrogen, Leek, The Netherlands) with 0.1 mg/ml DNase I (Roche, Almere, The Netherlands) and 1 mg/ml collagenase D (Roche) and passed through a 70- $\mu$ m cell strainer, after which red blood cells were lysed; the remaining cells were counted. Immunostaining for cell surface molecules was performed for 25 min at 4°C in the dark, using directly labelled antibodies against CD3 (PerCP-Cy5.5; BD Pharmingen, San Jose, Calif., USA), CD4 (AF700; BD Pharmingen), CD8 (APC-Cy7; BioLegend, San Diego, Calif., USA),  $\gamma\delta$ TCR (APC; eBioscience, San Diego, Calif., USA) and NK1.1 (PE-Cy7; eBioscience). For the intracellular staining,



**Fig. 1.** Lymphocyte source of intracellular gzmA and gzmB in the lungs and blood of WT mice before and after infection with *K. pneumoniae* via the airways. Mice were infected with  $4 \times 10^3$  CFU *K. pneumoniae* intranasally and sacrificed before and at 6, 16 and 48 h after infection. Percentage of the total gzmA (**a, c**) or gzmB

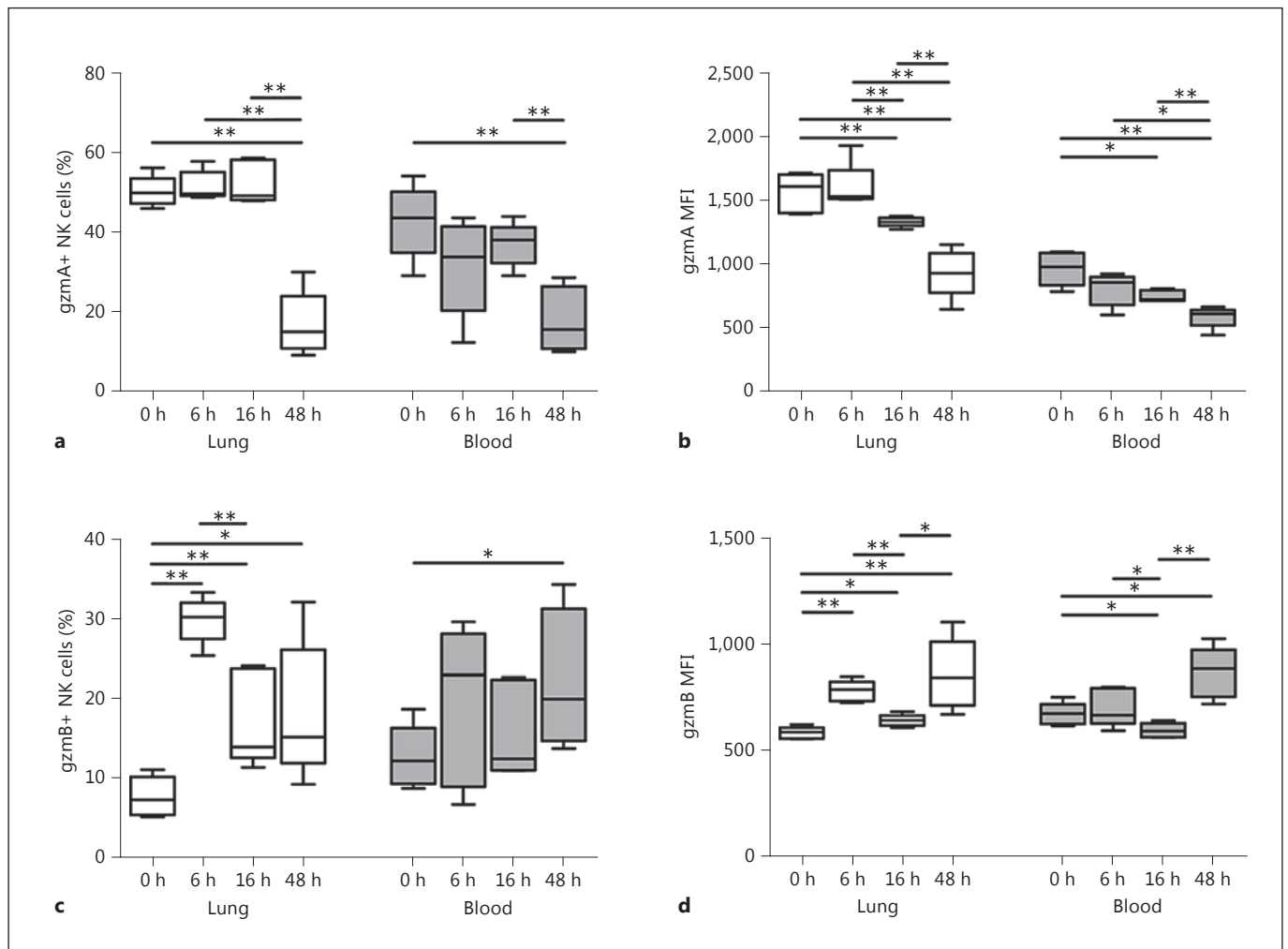
(**b, d**) expressed by different lymphocyte subsets from the lungs (**a, b**) and blood (**c, d**) are shown. Box-and-whisker diagrams depict the smallest observation, lower quartile, median, upper quartile and largest observation (n = 5 at each time point).

cells were fixed for 20 min in Cytfix/Cytoperm (BD Bioscience, San Jose, Calif., USA) at 4°C in the dark and resuspended in perm/wash buffer containing the antibodies against gzmA (PE; Santa Cruz Biotechnology, Dallas, Tex., USA) and gzmB (PE-CF594; BD Horizon, San Jose, Calif., USA). These 2 antibodies were tested in samples from the 3 knockout strains, to exclude cross-reaction with other gzms. Only minor unspecific gzmA staining (mostly in CD3<sup>-</sup> and NK1.1<sup>-</sup> cells) was observed in *gzmA*<sup>-/-</sup> and *gzmAxB*<sup>-/-</sup> mice (data not shown). All antibodies were used in concentrations recommended by the manufacturer. The cells were analysed by flow cytometry with a FACSCanto device (BD Bioscience). FlowJo software (Tree Star Inc., Ashland, Oreg., USA) was used to analyse the data. Live cells were gated in the forward-scatter versus side-

scatter dot plot. Cells were selected as CD3<sup>+</sup>CD4<sup>+</sup> (CD4<sup>+</sup> T), CD3<sup>+</sup>CD8<sup>+</sup> (CD8<sup>+</sup> T), CD3<sup>+</sup>γδTCR<sup>+</sup> (γδ T), CD3<sup>+</sup>NK1.1<sup>+</sup> (NK1.1<sup>+</sup> T) and CD3<sup>-</sup>NK1.1<sup>+</sup> (NK), and the expression of gzmA and gzmB was analysed in these populations. The results are expressed as percentage of cells of the specific population expressing the corresponding gzm and as the median fluorescence intensity (MFI). Alternatively, cells were selected as positive for each gzm and the percentages of the above-mentioned lymphocyte populations were analysed within the gzm-positive live cells.

#### Statistical Analysis

Data in figures are expressed as box and whiskers, showing the smallest observation, lower quartile, median, upper quartile and



**Fig. 2.** gzmA and gzmB expression in NK cells from WT mice before and during *K. pneumoniae* pneumonia. Mice were infected with  $4 \times 10^3$  CFU *K. pneumoniae* intranasally and sacrificed before and at 6, 16 and 48 h after infection. Percentage and MFI of intracellular gzmA (a, b) and gzmB (c, d) in NK cells from the lungs

and blood are shown. Box-and-whisker diagrams depict the smallest observation, lower quartile, median, upper quartile and largest observation (n = 5 at each time point). \* p < 0.05, \*\* p < 0.01 (Mann-Whitney U test).

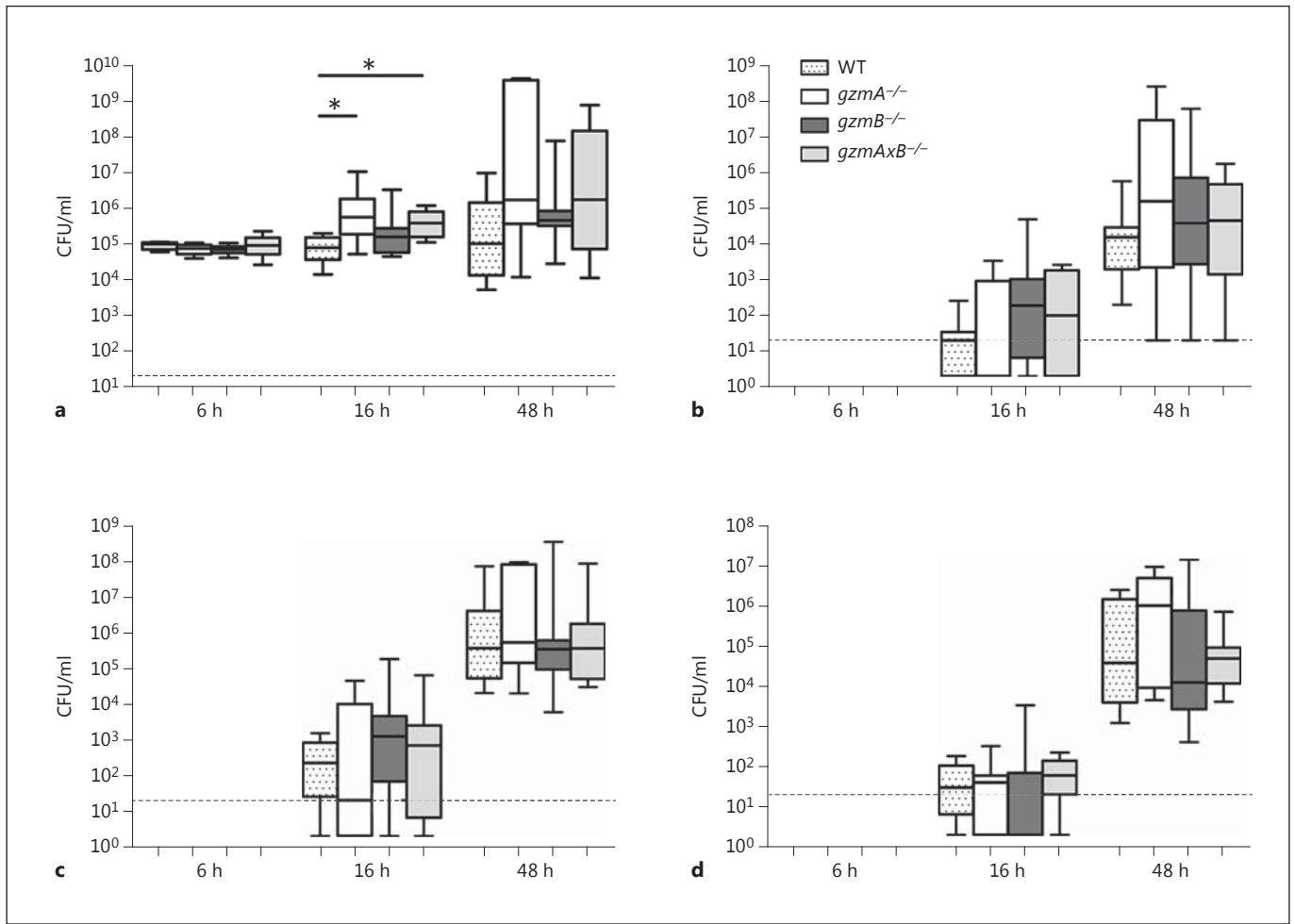
largest observation, or as individual data points. Comparisons were performed using the Kruskal-Wallis test for multiple groups and the Mann-Whitney U test for 2 independent groups. Survival was compared by Kaplan-Meier analysis followed by a log-rank test. Analyses were done using GraphPad Prism v4.0 and the SPSS Statistical Package v15.0. Statistical significance was taken as p < 0.05.

## Results

### *Expression of Granzymes A and B during K. pneumoniae Pneumonia*

To evaluate a possible role for gzmA and gzmB in pneumonia, we first sought to ascertain their expression

before and during *Klebsiella pneumoniae*. We infected WT mice intranasally, and analysed the intracellular expression of gzmA and gzmB in lymphocytes in whole lungs and blood obtained before and 6, 16 and 48 h after infection using flow cytometry. Only a low proportion of the live cells from the lungs and blood expressed gzms (data not shown). We focused on lymphocyte subsets previously implicated in gzm expression, i.e. NK, NK1.1+ T,  $\gamma\delta$  T, CD8+ T and CD4+ T cells [8] (the gating strategy for each subpopulation is shown in online suppl. fig. 1; see [www.karger.com/doi/10.1159/000443401](http://www.karger.com/doi/10.1159/000443401) for all online suppl. material). As shown in figure 1, amongst these lymphocyte subsets, NK cells were by far the most



**Fig. 3.** Bacterial loads in WT, *gzmA*<sup>-/-</sup>, *gzmB*<sup>-/-</sup> and *gzmAxB*<sup>-/-</sup> mice during *K. pneumoniae* pneumonia. Mice were infected with  $4 \times 10^3$  CFU *K. pneumoniae* intranasally. To determine bacterial loads in the lungs (a), blood (b), spleen (c) and liver (d), mice were sacrificed at 6, 16 and 48 h after infection. Box-and-whisker dia-

grams depict the smallest observation, lower quartile, median, upper quartile and largest observation (n = 7–8 per group at each time point). Dashed lines represent the lower detection limit of CFU. \* p < 0.05 (Mann-Whitney U test).

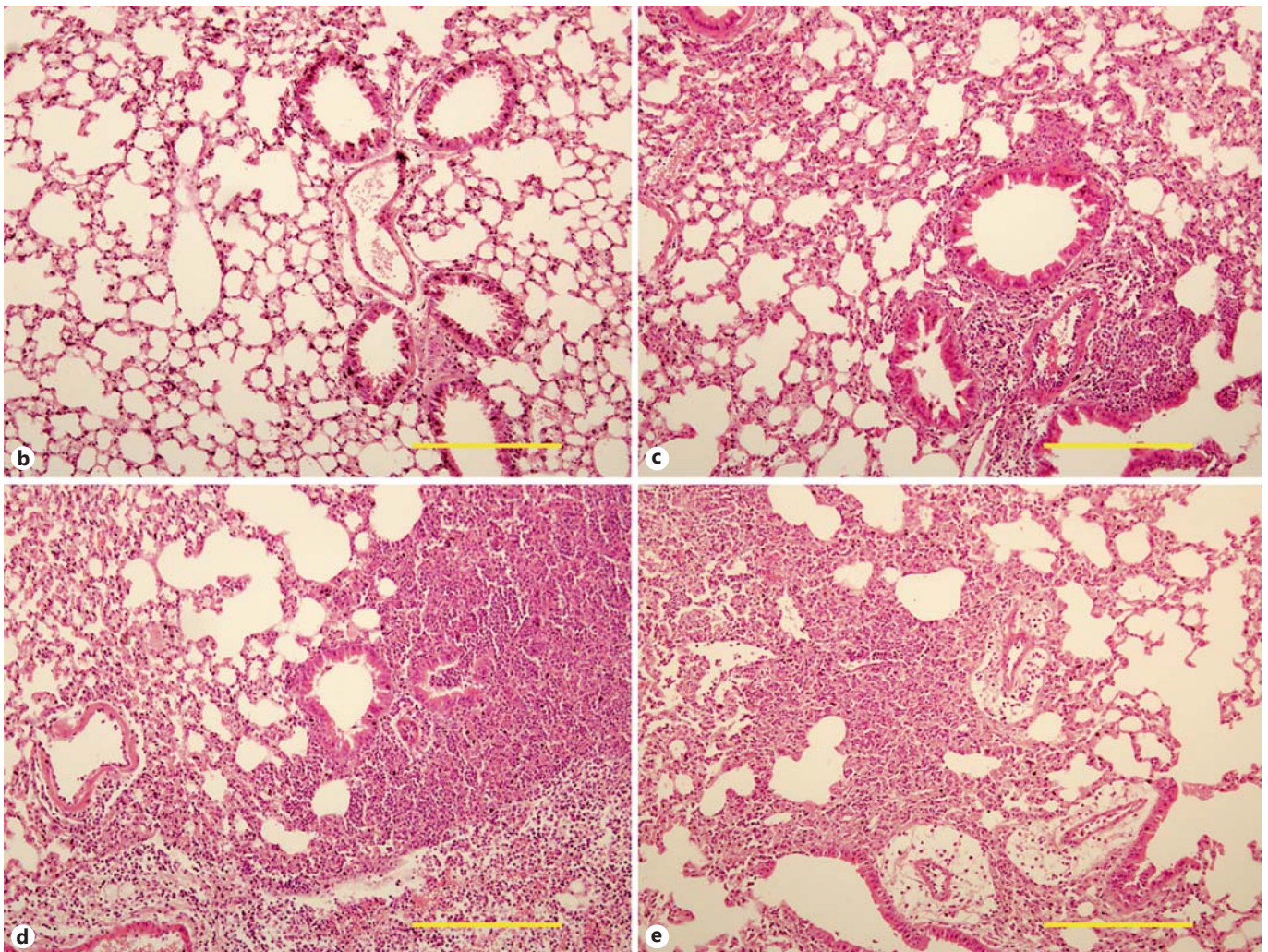
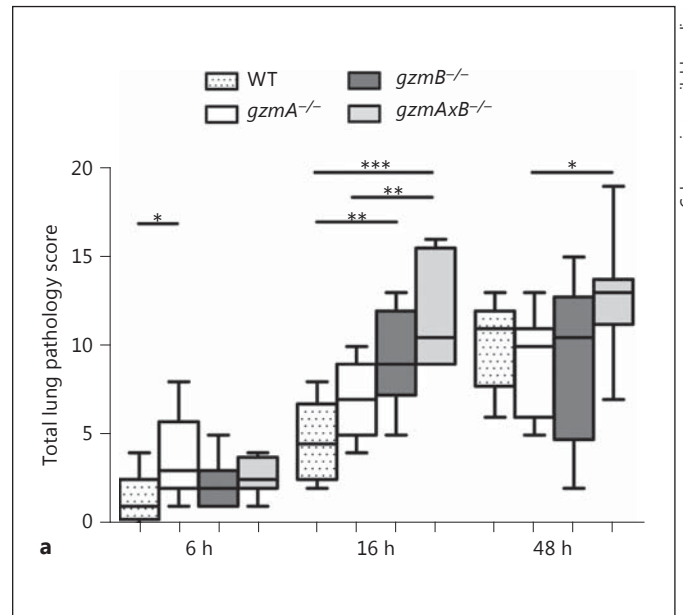
prominent cellular source of *gzmA* and *gzmB* in both the lungs and the blood, both before and after infection with *Klebsiella*. The percentage of the NK cells from the lungs and blood expressing *gzmA* initially did not change after infection with *Klebsiella*; however, there was a strong decrease after 48 h (fig. 2a). The MFI of these cells (i.e. the amount of *gzmA* expressed by *gzmA*<sup>+</sup> NK cells) showed a clear decreasing trend over time (fig. 2b). On the contrary, the expression of *gzmB* by NK cells was very low in uninfected mice and increased strongly after infection (fig. 2c, d). Only a small percentage of  $\gamma\delta$  T cells and an even smaller amount of CD8<sup>+</sup> T and CD4<sup>+</sup> T cells expressed *gzmA* or *gzmB* in both lungs and blood (online suppl. table 1).

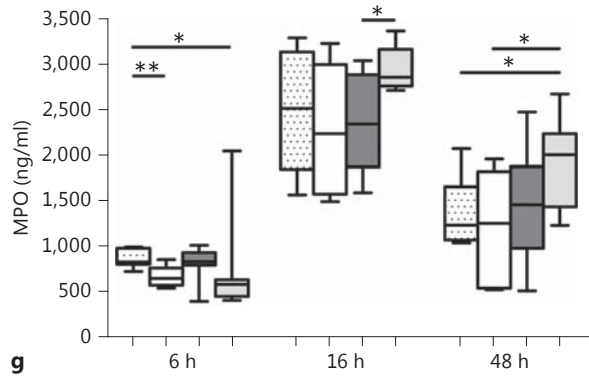
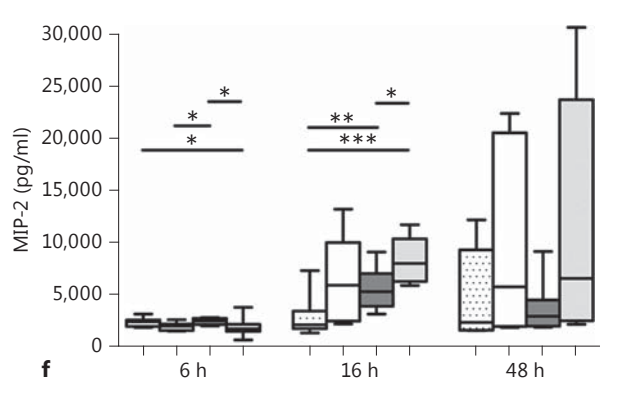
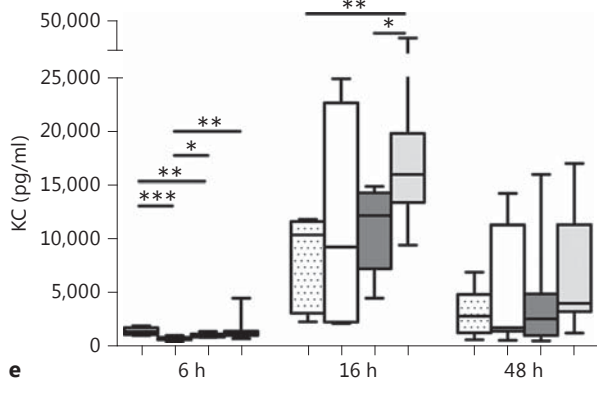
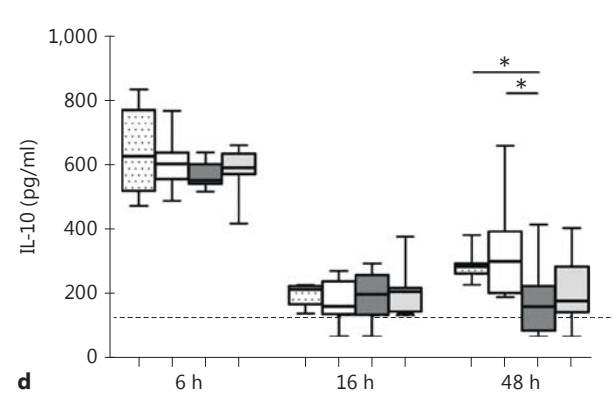
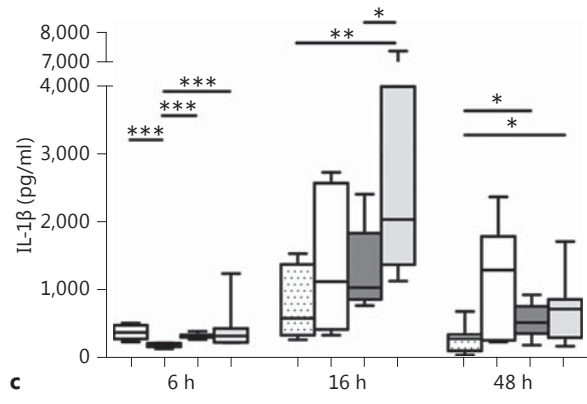
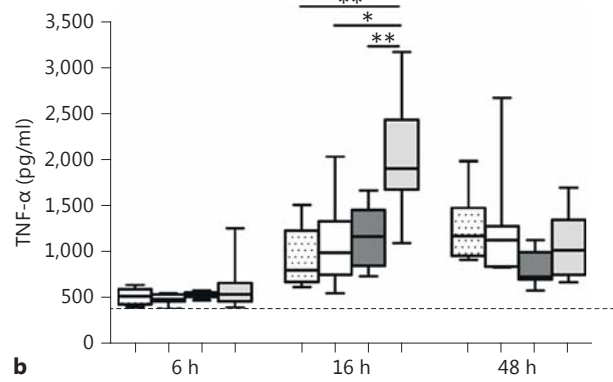
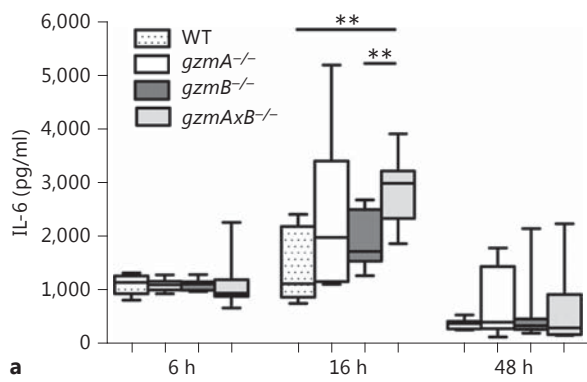
### *Granzyme A and Granzyme B Deficiency Has Little Impact on Bacterial Growth and Dissemination during K. pneumoniae Pneumonia*

To investigate whether *gzmA* and *gzmB* influence local bacterial outgrowth and dissemination to distant organs, we determined bacterial loads in lung homogenates as well as in the blood, spleen and liver of WT, *gzmA*<sup>-/-</sup>, *gzmB*<sup>-/-</sup> and *gzmAxB*<sup>-/-</sup> mice at predefined time points after infection (fig. 3). *Gzm* deficiency had little if any impact on antibacterial defence; at 16 h after infection, *gzmA*<sup>-/-</sup> and *gzmAxB*<sup>-/-</sup> mice had modestly but statistically significantly higher bacterial burdens in their lungs but not in the blood or distant organs. Bacterial loads were similar in all mouse strains at 6 and 48 h.



**Fig. 4.** Histopathology of the lungs of WT, *gzmA*<sup>-/-</sup>, *gzmB*<sup>-/-</sup> and *gzmAxB*<sup>-/-</sup> mice during *K. pneumoniae* pneumonia. Mice were infected with  $4 \times 10^3$  CFU *K. pneumoniae* intranasally and sacrificed at 6, 16 and 48 h after infection. **a** Semi-quantitative histology total score of lung slides is represented. Staining on representative lung slides of WT (**b**), *gzmA*<sup>-/-</sup> (**c**), *gzmB*<sup>-/-</sup> (**d**) and *gzmAxB*<sup>-/-</sup> (**e**) mice 16 h after *K. pneumoniae* infection. HE.  $\times 10$ . Scale bars: 200  $\mu$ m. Box-and-whisker diagrams depict the smallest observation, lower quartile, median, upper quartile and largest observation (n = 7–8 per group at each time point). \* p < 0.05, \*\* p < 0.01, \*\*\* p < 0.001 (Mann-Whitney U test).





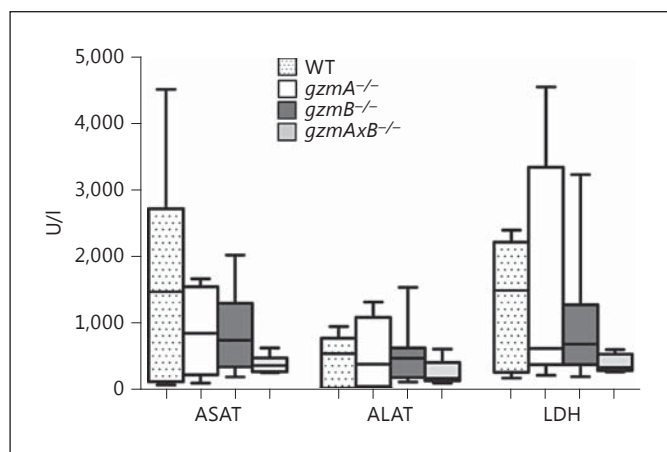
5

(For legend see next page.)



### Effect of Granzyme A and Granzyme B Deficiency in Lung Inflammation during *K. pneumoniae* Pneumonia

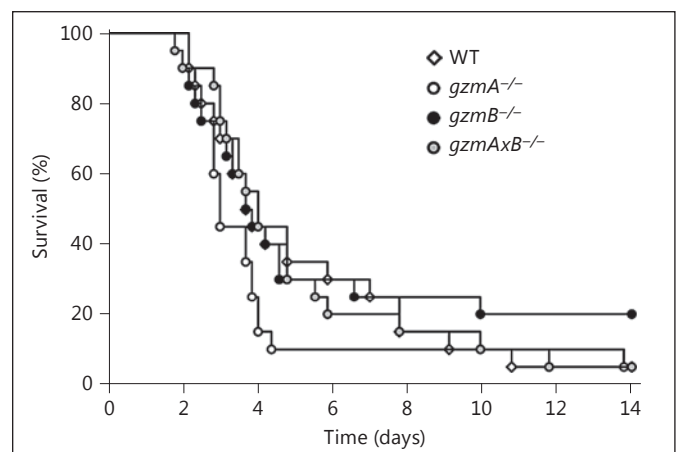
This model of respiratory tract infection is associated with a gradually developing inflammatory response at the primary site of infection that eventually results in severe lung inflammation with the characteristic histological features of pneumonia [17, 18]. To obtain insight into the role played by *gzmA* and *gzmB*, we semi-quantitatively analysed lung histology slides prepared from *gzmA*<sup>-/-</sup>, *gzmB*<sup>-/-</sup> and *gzmAxB*<sup>-/-</sup> mice at 6, 16 and 48 h after infection (fig. 4). At the earliest time point (6 h) relatively little pathology was observed in all groups, with *gzmA*<sup>-/-</sup> mice showing a slightly higher total lung pathology score than WT mice (fig. 4a). Remarkably, while at 16 h after infection the extent of lung pathology had modestly increased in WT mice, the *gzmB*<sup>-/-</sup> mice and, to a larger extent, *gzmAxB*<sup>-/-</sup> mice, presented with strongly increased lung pathology. At the later time point (48 h), shortly before the first mice died (see below), all mouse strains demonstrated profound lung pathology with no relevant differences between groups.



**Fig. 6.** Plasma levels of ASAT, ALAT and LDH in WT, *gzmA*<sup>-/-</sup>, *gzmB*<sup>-/-</sup> and *gzmAxB*<sup>-/-</sup> mice during *K. pneumoniae* pneumonia. Mice were infected with  $4 \times 10^3$  CFU *K. pneumoniae* intranasally. Figure shows plasma levels ASAT, ALAT and LDH 48 h after infection. Box-and-whisker diagrams depict the smallest observation, lower quartile, median, upper quartile and largest observation (n = 7–8 per group). No significant differences were observed between groups by Mann-Whitney U test.

**Fig. 5.** Cytokine, chemokine and MPO concentrations in the lungs of WT, *gzmA*<sup>-/-</sup>, *gzmB*<sup>-/-</sup> and *gzmAxB*<sup>-/-</sup> mice during *K. pneumoniae* pneumonia. Mice were infected with  $4 \times 10^3$  CFU *K. pneumoniae* intranasally and sacrificed at 6, 16 and 48 h after infection. Levels of IL-6 (a), TNF- $\alpha$  (b), IL-1 $\beta$  (c), IL-10 (d), KC (e), MIP-2 (f) and MPO (g) were measured in the supernatants of lung ho-

To obtain further insight into the local inflammatory response and the impact of *gzmA* and *gzmB* deficiency, we measured the levels of pro-inflammatory (IL-6, TNF- $\alpha$ , IFN- $\gamma$  and IL-1 $\beta$ ) and anti-inflammatory (IL-10) cytokines and chemokines (KC and MIP-2) in lung homogenates (fig. 5). Consistent with the increased lung pathology at 16 h after infection, *gzm*-deficient animals (most notably, the *gzmAxB*<sup>-/-</sup> mice) displayed elevated lung levels of pro-inflammatory cytokines and chemokines relative to WT mice at this time point. Increased lung inflammation was also reflected in elevated levels of MPO in the lungs (reflecting the neutrophil content) in *gzmAxB*<sup>-/-</sup> mice at 16 h after infection, although these differed significantly only versus *gzmB*<sup>-/-</sup> mice. Differences between the mouse strains had largely subsided at 48 h after infection, although IL-1 $\beta$  and MPO remained higher in the *gzmAxB*<sup>-/-</sup> mice. Of interest, soon after the induction of pneumonia (i.e. at 6 h), when lung inflammatory mediator levels were still low, *gzmA*-deficient mice showed clearly lower levels of IL-1 $\beta$  and KC than the other groups, and of MPO than WT mice, while *gzmAxB*<sup>-/-</sup> animals demon-



**Fig. 7.** Survival in WT, *gzmA*<sup>-/-</sup>, *gzmB*<sup>-/-</sup> and *gzmAxB*<sup>-/-</sup> mice during *K. pneumoniae* pneumonia. Mice were infected with  $4 \times 10^3$  CFU *K. pneumoniae* intranasally and were monitored for 14 days for mortality. Each symbol represents an individual mouse (n = 20 per group). No significant differences were observed between groups by log-rank test.

mogenates. Box-and-whisker diagrams depict the smallest observation, lower quartile, median, upper quartile and largest observation (n = 7–8 per group at each time point). Dashed lines represent the lower detection limit.\* p < 0.05, \*\* p < 0.01, \*\*\* p < 0.001 (Mann-Whitney U test).



strated modestly but statistically significantly reduced concentrations of MIP-2 and MPO. IFN- $\gamma$  levels were under the detection limit in most of the samples.

In addition, as a readout for systemic inflammation, we measured the plasma levels of IL-6, TNF- $\alpha$ , IFN- $\gamma$ , IL12-p70, IL-10 and MCP-1. The only relevant difference found was an increased level of IL-6 in *gzmAxB<sup>-/-</sup>* mice at 16 h (data not shown).

#### *Granzyme A and Granzyme B Deficiency Does Not Influence Distant Organ Injury during K. pneumoniae Pneumonia*

This model of severe pneumonia is associated with development of distant organ injury during late-stage infection [17, 18]. To determine the role played by *gzm*, we measured the plasma concentrations of ASAT and ALAT (both parameters of hepatocellular injury) and LDH (indicative for cellular injury in general). While these injury markers remained unaltered up to 16 h after infection in all groups (data not shown), their plasma levels were increased 48 h after infection; values did not differ between mouse strains, however (fig. 6). In accordance, the extent of liver pathology, determined by the semi-quantitative scoring system described in the Methods section, did not differ between groups (online suppl. fig. 2).

#### *Granzyme A and Granzyme B Deficiency Does Not Influence Mortality during K. pneumoniae Pneumonia*

The *Klebsiella* strain used here is highly virulent, causing high mortality rates at low infectious doses [17, 18]. Consistent with the transient effect on lung pathology and the unaltered distant organ injury, the *gzm*-deficient mice had similar mortality rates to the WT mice (fig. 7).

## Discussion

The respiratory tract is the most common primary site of infection in sepsis, and *K. pneumoniae* is a clinically important Gram-negative pathogen in hospital-acquired pneumonia. Previous studies reported elevated plasma levels of *gzmA* and *gzmB* in patients with severe sepsis [9, 10]. Since Gram-negative bacteria, as well as lipopolysaccharide (LPS), are potent inducers of *gzmA* and *gzmB* release in vitro [11], we sought to investigate the role of these *gzms* in the host response to *Klebsiella* in vivo. To this end, we used a mouse model of *K. pneumoniae* pneumonia in WT mice and mice deficient in *gzmA* and/or *gzmB*. Although *gzmB* deficiency, in particular, tran-

siently enhanced lung inflammation during *Klebsiella* pneumonia, *gzm*-deficient mice displayed a largely unaltered pattern of bacterial dissemination, distant organ damage and mortality when compared to WT mice. These data suggest that *gzmA* and *gzmB* play a modest role in the pathogenesis of Gram-negative pneumonia-derived sepsis.

To our knowledge, we present, for the first time, the pattern of intracellular expression of *gzmA* and *gzmB* by different lymphocyte populations before and after the induction of Gram-negative infection. NK cells represented the predominant cell type expressing *gzms*. While *gzmA* levels decreased in NK cells during *Klebsiella* sepsis, *gzmB* expression increased in these cells, suggesting a differential regulation of these mediators. Using human whole blood, our group previously demonstrated release of *gzmA* and *gzmB* upon exposure to bacterial agonists [11]. We could not confirm *gzm* release in vivo during *Klebsiella* infection due to the lack of mouse-specific immune assays with sufficient sensitivity. Hence, it remains to be established whether the decreased intracellular *gzmA* expression is the result of *gzmA* release.

We then analysed the effect of *gzmA* and *gzmB* deficiency on the host response during *Klebsiella* pneumonia-derived sepsis. This model resembles the clinical scenario of a gradually evolving infection in the airways followed by bacterial dissemination to distant body sites and sepsis, making it suitable for the study of both the early protective innate immune response at the primary site of infection and the late detrimental consequences of exaggerated inflammation responsible for collateral local and systemic tissue injury. Overall, bacterial loads did not differ between *gzm*-deficient and WT mice at any site, with the exception of modestly higher bacterial burdens in the lungs of *gzmA<sup>-/-</sup>* and *gzmAxB<sup>-/-</sup>* mice at 16 h after infection. Thus, *gzms* played little, if any, role in the control of local infection and subsequent dissemination to distant organs. In agreement, *gzmA<sup>-/-</sup>* mice did not present differences in *Listeria monocytogenes* growth [19] or in bacteraemia and dissemination after *Brucella microti* infection [20] when compared to WT mice.

Early (6 h) after infection, when the inflammatory response in the lung was still limited, *gzm*-deficient mice had lower pulmonary levels of IL-1 $\beta$ , MIP-2 and KC. This finding is in line with previous reports revealing the role of *gzms* in the production, release and/or processing of pro-inflammatory cytokines [8, 13, 14, 21]. The modestly reduced pro-inflammatory mediator levels in the *gzm*-deficient mice may, at least in part, explain the lower MPO concentrations, indicative of total neutrophil con-

tent, in these animals at 6 h after infection. In addition, considering that a brisk inflammatory reaction in the lungs is important for antibacterial defence in this model [17, 22, 23], the impaired early response could have contributed to the higher bacterial loads in the lungs of *gzmA*<sup>-/-</sup> and *gzmAxB*<sup>-/-</sup> mice at 16 h after infection. Notably, at this intermediate time point (16 h), when the lung infection had advanced to distant sites but was not yet accompanied by distant organ damage, *gzmB* and *gzmAxB* deficiency were associated with enhanced pulmonary inflammation. In addition, *gzmAxB*<sup>-/-</sup> mice, in particular, showed higher levels of pro-inflammatory cytokines and chemokines in whole-lung homogenates. The mechanism by which *gzms* contribute to the regulation of lung inflammation during *Klebsiella* pneumonia remains to be established. Earlier studies also reported enhanced inflammatory responses in *gzm*-deficient mice during viral infection [24, 25] and bleomycin-induced pulmonary fibrosis [26]. Eventually, *gzm* deficiency did not impact on the outcome of *Klebsiella* sepsis, as reflected by the similar bacterial counts in all organs and comparable distant organ damage at a later time point (48 h) after infection as well as unaltered mortality in *gzm*-deficient and WT mice. Together, these results suggest that the role of *gzmA* and *gzmB* in the host response during *Klebsiella* sepsis is modest and transient. In this respect, it is worth mentioning, however, that we cannot exclude possible compensatory mechanisms by other *gzms*, such as *gzmM* and *gzmK*, taking part in the results obtained in the *gzmAxB*<sup>-/-</sup> mice [15, 27, 28]. Previous studies reported the reduced mortality of *gzmB*<sup>-/-</sup> mice during polymicrobial peritonitis [29] and of *gzmA*<sup>-/-</sup> mice during *B. mi-*

*croti* sepsis [20], suggesting differential roles of *gzms* depending on the primary site of infection and/or the causative pathogen. Of note and relevant for the responsiveness to Gram-negative bacteria, earlier reports on the role of *gzms* in LPS-induced shock are partially contradictory. One study showed an increased resistance to LPS-induced mortality of *gzmA*<sup>-/-</sup> and *gzmB*<sup>-/-</sup> mice but not of *gzmAxB*<sup>-/-</sup> mice [14], while a subsequent study found *gzmA*<sup>-/-</sup> but not *gzmB*<sup>-/-</sup> mice to be resistant to LPS-induced lethality [15].

In conclusion, we studied the function of *gzmA* and *gzmB* in a clinically relevant model of Gram-negative pneumonia-derived sepsis. While *gzm* deficiency was associated with an enhanced local inflammatory response during early-stage pneumonia, our results argue against an important role for *gzms* in the pathogenesis of severe pneumonia and sepsis caused by a common human pathogen.

### Acknowledgements

We are grateful to Joost Daalhuisen, Marieke ten Brink, Sanne Terpstra and Regina de Beer for their invaluable technical assistance.

This research was supported by a Marie Curie Intra-European Fellowship within the 7th European Community Framework Programme.

### Disclosure Statement

The authors declare that they have no conflicts of interest.

### References

- Podschun R, Ullmann U: *Klebsiella* spp. as nosocomial pathogens: epidemiology, taxonomy, typing methods, and pathogenicity factors. *Clin Microbiol Rev* 1998;11:589–603.
- Yinnon AM, Butnaru A, Raveh D, Jerassy Z, Rudensky B: *Klebsiella* bacteraemia: community versus nosocomial infection. *QJM* 1996; 89:933–941.
- Giamarellou H: Multidrug resistance in Gram-negative bacteria that produce extended-spectrum beta-lactamases (ESBLs). *Clin Microbiol Infect* 2005;11(suppl 4):1–16.
- Susanto O, Trapani JA, Brasacchio D: Controversies in granzyme biology. *Tissue Antigens* 2012;80:477–487.
- Grossman WJ, Verbsky JW, Tollefsen BL, Kemper C, Atkinson JP, Ley TJ: Differential expression of granzymes A and B in human cytotoxic lymphocyte subsets and T regulatory cells. *Blood* 2004;104:2840–2848.
- Garcia-Sanz JA, MacDonald HR, Jenne DE, Tschopp J, Nabholz M: Cell specificity of granzyme gene expression. *J Immunol* 1990; 145:3111–3118.
- Buzza MS, Bird PI: Extracellular granzymes: current perspectives. *Biol Chem* 2006;387: 827–837.
- Anthony DA, Andrews DM, Watt SV, Trapani JA, Smyth MJ: Functional dissection of the granzyme family: cell death and inflammation. *Immunol Rev* 2010;235:73–92.
- Zeerleder S, Hack CE, Caliezi C, van MG, Eerenberg-Belmer A, Wolbink A, Wuillemin WA: Activated cytotoxic T cells and NK cells in severe sepsis and septic shock and their role in multiple organ dysfunction. *Clin Immunol* 2005;116:158–165.
- Napoli AM, Fast LD, Gardiner F, Nevola M, Machan JT: Increased granzyme levels in cytotoxic T lymphocytes are associated with disease severity in emergency department patients with severe sepsis. *Shock* 2012;37:257–262.

- 11 Lauw FN, Simpson AJ, Hack CE, Prins JM, Wolbink AM, van Deventer SJ, Chaowagul W, White NJ, van der Poll T: Soluble granzymes are released during human endotoxemia and in patients with severe infection due to Gram-negative bacteria. *J Infect Dis* 2000; 182:206–213.
- 12 Afonina IS, Cullen SP, Martin SJ: Cytotoxic and non-cytotoxic roles of the CTL/NK protease granzyme B. *Immunol Rev* 2010;235: 105–116.
- 13 Wensink AC, Hack CE, Bovenschen N: Granzymes regulate pro-inflammatory cytokine responses. *J Immunol* 2014;194:491–497.
- 14 Metkar SS, Menaa C, Pardo J, Wang B, Wallich R, Freudenberg M, Kim S, Raja SM, Shi L, Simon MM, Froelich CJ: Human and mouse granzyme A induce a pro-inflammatory cytokine response. *Immunity* 2008;29:720–733.
- 15 Anthony DA, Andrews DM, Chow M, Watt SV, House C, Akira S, Bird PI, Trapani JA, Smyth MJ: A role for granzyme M in TLR4-driven inflammation and endotoxemia. *J Immunol* 2010;185:1794–1803.
- 16 Simon MM, Hausmann M, Tran T, Ebnet K, Tschopp J, ThaHla R, Müllbacher A: In vitro and ex vivo-derived cytolytic leukocytes from granzyme AxB double knockout mice are defective in granule-mediated apoptosis but not lysis of target cells. *J Exp Med* 1997;186:1781–1786.
- 17 Wieland CW, van Lieshout MH, Hoogendijk AJ, van der Poll T: Host defence during *Klebsiella pneumoniae* relies on haematopoietic expressed Toll-like receptors 4 and 2. *Eur Respir J* 2011;37:848–57.
- 18 Achouiti A, Vogl T, Urban CF, Röhm M, Hommes TJ, van Zoelen MA, Florquin S, Roth J, van 't Veer C, de Vos AF, van der Poll T: Myeloid-related protein-14 contributes to protective immunity in Gram-negative pneumonia derived sepsis. *PLoS Pathog* 2012; 8:e1002987.
- 19 Ebnet K, Hausmann M, Lehmann-Grube F, Müllbacher A, Kopf M, Lamers M, Simon MM: Granzyme A-deficient mice retain potent cell-mediated cytotoxicity. *EMBO J* 1995; 14:4230–4239.
- 20 Arias MA, Jiménez de Bagües MP, Aguiló N, Menao S, Hervás-Stubbs S, de Martino A, Alcaraz A, Simon MM, Froelich CJ, Pardo J: Elucidating sources and roles of granzymes A and B during bacterial infection and sepsis. *Cell Rep* 2014;8:420–429.
- 21 Joeckel LT, Bird PI: Are all granzymes cytotoxic in vivo? *Biol Chem* 2014;395:181–202.
- 22 van Lieshout MH, Anas AA, Florquin S, Hou B, van't Veer C, de Vos AF, van der Poll T: Hematopoietic but not endothelial cell MyD88 contributes to host defense during Gram-negative pneumonia-derived sepsis. *PLoS Pathog* 2014;10:e1004368.
- 23 Anas AA, de Vos AF, Hoogendijk AJ, van Lieshout MH, van Heijst JW, Florquin S, Li Z, van't Veer C, van der Poll T: Endoplasmic reticulum chaperone Gp96 in macrophages is essential for protective immunity during Gram-negative pneumonia. *J Pathol* 2016; 238:74–84.
- 24 Müllbacher A, Ebnet K, Blanden RV, Hla RT, Stehle T, Museteanu C, Simon MM: Granzyme A is critical for recovery of mice from infection with the natural cytopathic viral pathogen, *Ectromelia*. *Proc Natl Acad Sci USA* 1996;93:5783–5787.
- 25 Müllbacher A, Waring P, Tha Hla R, Tran T, Chin S, Stehle T, Museteanu C, Simon MM: Granzymes are the essential downstream effector molecules for the control of primary virus infections by cytolytic leukocytes. *Proc Natl Acad Sci USA* 1999;96:13950–13955.
- 26 Hirota JA, Hiebert PR, Gold M, Wu D, Graydon C, Smith JA, Ask K, McNagny K, Granville DJ, Knight DA: Granzyme B deficiency exacerbates lung inflammation in mice after acute lung injury. *Am J Respir Cell Mol Biol* 2013;49:453–462.
- 27 Wensink AC, Kemp V, Fermie J, García-Laorden MI, van der Poll T, Hack CE, Bovenschen N: Granzyme K synergistically potentiates LPS-induced cytokine responses in human monocytes. *Proc Natl Acad Sci USA* 2014; 111:5974–5979.
- 28 Joeckel LT, Wallich R, Martin P, Sanchez-Martinez D, Weber FC, Martin SF, Borner C, Pardo J, Froelich C, Simon MM: Mouse granzyme K has pro-inflammatory potential. *Cell Death Differ* 2011;18:1112–1119.
- 29 Sharron M, Hoptay CE, Wiles AA, Garvin LM, Geha M, Benton AS, Nagaraju K, Freishtat RJ: Platelets induce apoptosis during sepsis in a contact-dependent manner that is inhibited by GPIIb/IIIa blockade. *PLoS One* 2012;7:e41549.