



HHS Public Access

Author manuscript

Twin Res Hum Genet. Author manuscript; available in PMC 2020 August 01.

Published in final edited form as:

Twin Res Hum Genet. 2019 August ; 22(4): 233–239. doi:10.1017/thg.2019.55.

Longitudinal Research at the Interface of Affective Neuroscience, Developmental Psychopathology, Health, and Behavioral Genetics: Findings from the Wisconsin Twin Project

Nicole L. Schmidt¹, Rebecca J. Brooker², Ian C. Carroll¹, Jeffrey R. Gagne², Zhan Luo¹, Mollie N. Moore¹, Elizabeth M. Planalp¹, Katherine L. Sarkisian¹, Cory K. Schmidt¹, Carol A. Van Hulle¹, Kathryn Lemery-Chalfant³, H. H. Goldsmith¹

¹University of Wisconsin–Madison, USA

²Texas A&M University, USA

³Arizona State University, USA

Abstract

The Wisconsin Twin Project comprises multiple longitudinal studies that span infancy to early adulthood. We summarize recent papers that show how twin designs with deep phenotyping, including biological measures, can inform questions about phenotypic structure, etiology, comorbidity, heterogeneity, and gene-environment interplay of temperamental constructs and mental and physical health conditions of children and adolescents. The general framework for investigations begins with rich characterization of early temperament and follows with study of experiences and exposures across childhood and adolescence. Many studies incorporate neuroimaging and hormone assays.

Keywords

twins; longitudinal; temperament; developmental psychopathology; neuroimaging; sensory; behavior genetics

The core research focus of the Wisconsin Twin Project is human affective development, and the primary outcome for many analyses is clinical symptoms. Presently, the project covers development from the prenatal period to early adulthood. The Wisconsin Twin Project's signature approach is its depth and breadth of phenotyping.

Our research foci include the etiology and developmental course of early emotions, temperament, childhood anxiety and impulsivity, the autism spectrum, auditory and tactile sensory sensitivity, and related neural, psychobiological and behavioral phenotypes. We employ a range of research methods to assess *behavior* (structured batteries of vignettes with affective incentives, interviews, observer ratings, child self-report, co-twin report, parent-report questionnaires, and computer-based cognitive and affective performance tests),

experiences (observations and interviews), *hormones* (assays of basal and reactive cortisol, puberty-related hormones), *brain structure and function* (multi-modal magnetic resonance imaging [MRI] and electroencephalogram [EEG]), *genes* (quantitative variance partitioning methods, genotyping), and other topics (e.g., pregnancy, birth and medical reports, self-reports of health).

We did not design the Wisconsin Twin Project to test any single overarching theory of development. Rather, the panel is meant to be a resource for individuals with potentially differing theoretical perspectives. Still, a general framework beginning with the development of temperament from birth underlies our design. Various aspects of temperament are regarded as predictors of later symptoms (e.g., lack of inhibitory control for later attention-deficit/hyperactivity disorder [ADHD] symptoms); moreover, temperament is expected to moderate the influence of experiences and exposures on the development of symptoms (e.g., behavioral inhibition may moderate the impact of overprotective parenting on later social anxiety). Figure 1 is a highly conceptual diagram of this framework.

We regard the neural underpinnings of symptoms not only as mediators of the effects of experience and temperament on symptoms but also as an interesting outcome of experience. The genetic features of this conceptual diagram are not depicted, but the twin design allows the analyses to be genetically informative. None of our published reports include every component of Figure 1. Rather, we specify components and test parts of the framework. For example, ‘temperament’ might be specified as ‘behavioral inhibition in early childhood,’ ‘experiences and exposures’ as an ‘adverse childhood events index,’ ‘neural structure and function’ as ‘resting state connectivity of amygdala with the dorsolateral prefrontal cortex,’ and ‘anxiety’ as ‘social anxiety symptoms in late adolescence.’ Then, this specific model can be tested with our data.

Wisconsin Twin Project birth cohorts spanned 1989–2004. After nearly 30 years, the research program encompasses a series of longitudinal studies that span infancy to early adulthood. Not every study uses the entire panel. In some cases, subsamples of panel members are selected to create an enriched sample for a phenotype of interest or due to cost considerations. The research is conducted at the University of Wisconsin–Madison’s Waisman Center and the Department of Psychology (<https://goldsmithtwins.waisman.wisc.edu/>). Procedures in studies under the Wisconsin Twin Project were approved by University of Wisconsin–Madison Internal Review Boards and comply with the Helsinki Accords of 1975, as revised in 2008. Twin family recruitment and early results were covered in prior overviews of the project (Goldsmith et al., 2007; Schmidt et al., 2013) and our recent description of the project (Schmidt et al., in press). Here, we summarize research results from the past few years.

Twin Neuroimaging

During early 2019, we completed data collection for a set of twin neuroimaging studies with approximately 600 adolescents and young adult twins. These studies assessed brain structure and function with multimodal MRI. We use T1- and T2-weighted structural scans, diffusion weighted imaging, arterial spin labeling, resting state functional MRI (fMRI), and task-

related fMRI. Concurrent with neuroimaging, we also include diverse measures of emotion, behavior, hormones, and experience. The neuroimaging studies have incorporated Research Domain Criteria themes that emphasize dimensional approaches and neurobiological measurement for improved nosology (Cuthbert, 2014; Insel, 2014). Monozygotic (MZ) twin differences are interrogated in some detail. In the MRI analyses, we focused more on white matter microstructure and on resting state and task-related functional measures (i.e., circuitry and networks) than on grey matter structure. Here we describe three empirical results.

As an example of our findings, Figure 2 depicts the uncinate fasciculus, a prominent white matter tract that connects limbic regions with prefrontal cortex, which is likely involved in cortical regulation of emotional reactivity. We are interested in the white matter microstructure of adolescent uncinate fasciculus, measured by fractional anisotropy (FA) using diffusion tensor imaging (DTI), as a putative measure of the integrity (and thus functional properties) of that tract. Figure 2 color codes the degree of MZ cotwin similarity (i.e., MZ intraclass correlations [ICCs]) for FA along the uncinate fasciculus, from the frontal to the temporal segment. As the figure shows, adolescent MZ co-twins are substantially more similar in FA in the intermediary/insular segment of the uncinate fasciculus than in other segments. The mean MZ ICC of 0.42 thus obscures substantial variation, and suggests that a question such as, ‘How heritable is FA in the uncinate fasciculus?’ may be formulated at too general a level to be optimally informative.

Another example of our neuroimaging research uses the MZ Difference design. In DTI analyses, we again focus on the uncinate fasciculus (Adluru et al., 2017). MZ co-twins are similar for FA values in the left and right uncinate fasciculus (ICCs = .66 and .75, respectively). MZ co-twins are also similar for our anxiety measure, ICC = .67. When we shift from twin similarity to analyze (non-genetic) MZ twin differences, we detected an environmentally based relationship between FA in the uncinate fasciculus and concurrent anxiety symptoms. That is, the cotwin with more anxiety symptoms had lower FA (interpreted as lower white matter integrity) in the uncinate fasciculus. This white matter-anxiety relationship was not apparent when twins were treated as individuals, thus highlighting the importance of the control over confounding variables, such as gross brain morphology, afforded by the MZ Difference design.

A final neuroimaging example is our implementation of novel brain structural network analysis using a classic twin design (Chung et al., 2018). In a standard brain network analysis, the resolution of structural network connections is limited by the number of parcellations defined in a standard brain atlas. In this study, we proposed a hierarchical parcellation scheme that iteratively divides discrete brain structure into smaller subregions, even down to the voxel level. With the ability to choose the scale of the network under investigation, we demonstrated that the heritability of white matter structural connectivity patterns was robust and consistent across multiple network scales (including after five iterations that subdivided the whole brain into 3712 parcellations).

Psychophysiology and Endocrine Studies

Measures of psychophysiology and of hormones play key roles in the literature on temperament, emotion, and stress. A subset of twins completed two sessions each at ages 6 months and 12 months that included physiological measures (e.g., EEG and cortisol) along with behavioral episodes. We found differences in the stability of alpha-based frontal asymmetry in infants across baseline and emotion-eliciting contexts (Brooker et al., 2017). Frontal asymmetry during baseline, or resting, conditions is viewed as an index of individual differences in emotional behavior (Brooker, Davidson, et al., 2016); frontal asymmetry during emotion provocation is thought to index a readiness to respond to the contextual demands of one's environment (Coan et al., 2006). Our work showed relatively high levels of stability in frontal asymmetry baseline conditions in infants. In contrast, we found lower levels of stability in frontal asymmetry during emotion elicitation, perhaps reflective of the rapid changes in emotional development occurring during infancy. This work thus holds relevance for developmental scientists seeking guidance with study design and procedure as well as those looking to refine current theory regarding the temporal unfolding of emotion during infancy.

We have used EEG along with other physiological measures in multi-method investigations of the interplay between children's developmental context and biological function, particularly as they relate to risk for psychopathology. Specifically, we found that heightened levels of maternal negativity during infancy predict longitudinal disruptions in the normative patterns of change in diurnal cortisol and cross-context EEG asymmetry measures reflecting readiness to cope with environmental challenge (Brooker, Davidson et al., 2016). Disrupted cortisol, in particular, appeared to be a risk factor for emerging symptoms of anxiety by age 7. Moreover, heightened cortisol was linked to increased neural coupling, a putative index of neural efforts at regulation (Knyazev, 2007) in response to nonpositive laboratory episodes (Brooker, Phelps et al., 2016).

Individual differences in cortisol are linked to a broad range of health outcomes (Staufenbiel et al., 2013). Twins provided salivary samples (3x per day) on three consecutive days during childhood (ages 7–10 years) and adolescence (ages 12–16 years). Samples were assayed for cortisol at both ages and for dehydroepiandrosterone (DHEA) and testosterone at adolescence only. We examined the genetic architecture of these hormonal measures, and their relationship to behavior and brain function. Shared and nonshared environmental factors accounted for the majority of variation in cortisol level and diurnal slope, whereas genetic factors accounted for a modest proportion of the variation in morning cortisol level and morning to afternoon diurnal slope (Van Hulle et al., 2012). We also examined the contribution of these latent biometric factors to the coupling of DHEA and testosterone in adolescence. Hormone coupling (or covariation) impacts behavior problems beyond the effects of either hormone alone (Johnson et al., 2014). Testosterone-DHEA covariation, independent of pubertal status, was due to correlated shared and nonshared environmental factors (Van Hulle et al., 2015). Hypothalamic pituitary adrenal (HPA) axis function is shaped by early life experience and impacts later behavior. We showed that the infants who exhibited a steep increase in fear of strangers from ages 6 to 36 months had flatter diurnal cortisol slope (girls only) and more anxiety symptoms at age 7 years than infants who

followed a more typical pattern of stranger fear development (Van Hulle, Moore et al., 2017). MZ twin intrapair differences in childhood afternoon cortisol level were in turn associated with intrapair differences in resting state connectivity between the amygdala and perigenual prefrontal cortex (PFC), and with intrapair differences in amygdala recovery following unpleasant images in adolescence (Burghy et al., 2016). The cotwin with higher childhood cortisol evinced relatively lower resting state connectivity and poorer amygdala recovery in adolescence. Together, these studies highlight the importance of nongenetic factors in contributing to HPA function and its effects on emotion regulation and behavior. Overall, products from this work include contributions to basic developmental science as well as theory-driven empirical tests of the interplay between experience and the development of biological systems.

Studies of the Genetics of Temperamental Development

A consistent theme of our longitudinal work concerns the etiology of temperamental traits, their developmental trajectories and their functional significance. The age range in papers extends from infancy to early adolescence. Our temperament assessment batteries are modified to be age-appropriate but are still aligned to allow testing the same construct over time (Goldsmith et al., 2010; Goldsmith & Rothbart, 1996). For example, we have used multiple laboratory temperament assessment episodes designed to measure child fear, anger, sadness, and positive affect in infancy, toddlerhood, preschool and middle childhood. We also transformed what was initially a lab-based infant/toddler temperament battery to become a middle childhood battery administered in the home setting (Goldsmith et al., 2010). Measurement properties and scale validation are established (Gagne et al., 2011; Planalp, Van Hulle, Gagne et al., 2017), and the measures are conceptualized in terms of theories of emotion (Planalp, Van Hulle, Gagne, et al., 2017).

Here, we recount recent findings. We identified distinct trajectories of stranger fear during the first three years of life (Brooker et al., 2013) and noted associations with later diurnal cortisol and anxious behavior (Van Hulle, Moore et al., 2017). We found that self-conscious shyness is etiologically distinct from fearful shyness during early childhood (Eggum-Wilkens et al., 2015), with strong genetic contributions to both varieties of shyness. Genetic factors were particularly strong for developmental growth in self-conscious shyness (Eggum-Wilkens et al., 2015). In contrast, strong environmental factors were observed for infant positive affect; environmental factors also contributed to positive affect development through the first year of life (Planalp, Van Hulle, Lemery-Chalfant et al., 2017). When examining parent- and lab-assessed anger and inhibitory control in three-year-old twins, we found significant genetic influences on parent-rated anger and inhibitory control, and lab-assessed anger (shared environmental influences contributed to twin similarity on lab assessments of inhibitory control). Twins with higher levels of anger had lower inhibitory control, but genetic covariance was only present for parent-rated anger and inhibitory control (Gagne & Goldsmith, 2011).

Modest gender differences in temperament were observed at 3 years of age, with girls scoring somewhat higher in shyness and inhibitory control, and boys scoring higher in activity level. Similar patterns were observed in both same-sex and opposite-sex twins;

opposite-sex twin girls were not significantly different from same-sex twin girls (Gagne et al., 2013). Shyer children had higher scores on inhibitory control and lower scores on activity level.

In a study of negative emotionality at approximately 7 years of age, genetic contributions were observed for parent-rated anger, sadness and fear. Estimates of additive genetic influences were comparable for anger and sadness but nearly twice as strong for fear; standardized estimates of additive genetic variance were .45, .45, and .74, respectively (Clifford et al., 2015). Furthermore, genetic influences on anger were not shared with fear.

Two recent papers identified profiles of temperament across multiple domains. Profile analysis of the Children's Behavior Questionnaire revealed four groupings of 7–8-year-old children based on differences in temperamental reactivity and regulation, and positive versus negative emotionality (Scott et al., 2016). Genetic factors influenced all four profiles, but were strongest for the *Well-regulated, Positive Reactive* and *Regulated, Surgent* profiles. Shared environmental factors were strongest for the *Regulated, Typical Reactive* profile and were also present for the *Dysregulated, Negative Reactive* profile (Scott et al., 2016). In a profile analysis of observed behavior from the Lab-TAB at 6 and 12 months of age, we again identified four profiles, with the strongest stability and genetic contribution in the *Withdrawn/Inhibited* profile (Planalp & Goldsmith, 2019). Thus, our project views dimensional and categorical (profile) approaches as complementary and examines both types of measures with biometric approaches.

Our twin data help address pressing questions concerning pediatric comorbidity. A latent class approach applied to item-level symptoms with a sample of >3,200 children at mean age 7.5 years revealed 9 classes for both boys and girls, ranging from low symptoms to moderately internalizing and severe externalizing (Vendlinski et al., 2014). Although the classes for girls and boys were largely similar, a unique class for boys was characterized by severely impulsive and inattentive symptoms. A unique class for girls was characterized by moderate anxiety symptoms (Vendlinski et al., 2014). Univariate ACE models fit to probability of class membership in a combined-gender analysis are shown in Table 1.

Notable features of this analysis include the frequency of combined internalizing and externalizing symptoms in three of the more severely impaired classes (C8, C6, C5), the temperament-like nature of the less severe classes (C1, C2, C3), and the importance of shared environmental factors for both the low symptom class (C4) and the three most symptomatic classes (C6, C7, C8).

Roles for Environmental Factors and Gene-Environment Interplay

Our longitudinal research captures a wealth of environmental contexts, including prenatal risks, parenting, marital quality, sibling relationships and peer relationships. Most measures are repeated over time and include perspectives from multiple family members, including co-twin ratings of twin peer experiences. Here, we describe six recent papers that characterize the role of environmental factors as moderators of development.

We considered the role of early life stress as a moderator of the link between early anger and preschool behavior problems. Family-level measures of cumulative life events interacted with early laboratory-derived anger profiles at 6 and 12 months of age to predict behavior problems at age 3 years. Children who exhibited atypical anger in infancy showed more behavior problems than children who exhibited increasing anger, though only when family stress was low (Brooker et al., 2014). In a second study identifying temperament profiles at 6 and 12 months, fathers reported higher stress levels when infants were more *Withdrawn/Inhibited*, and less stress when infants were identified as *Low Negative* (Planalp & Goldsmith, 2019). In the same sample, at 3 years of age, correlates of mother and father parenting behaviors during a dyadic interaction differed depending on parent factors: fathers were more sensitive with their children when marital quality was higher, and mothers were more sensitive when her own positive affect was higher. Further, fathers were more responsive toward children rated higher in inhibitory control (Planalp et al., 2019). Thus, different levels of parental stress and different types of parenting behaviors provide varying experiential contexts for child development (Planalp et al., 2019).

In the fourth paper, we showed that both child effortful control and extraversion/surgency at age 8 years were modestly more heritable under more chaotic home environment conditions (Lemery-Chalfant et al., 2013). The overall variance in effortful control was greater in more chaotic home environments, but variance in extraversion/surgency was minimally different in more chaotic environments (Lemery-Chalfant et al., 2013). Furthermore, home environments were less chaotic for children with higher levels of effortful control and more chaotic for children with high extraversion/surgency, and both associations were genetically mediated. Parents provide genes that contribute to variation in both home life and in their children's temperament. Heritability of negative affectivity increased in more crowded or unsafe home environments, and overall variance was higher in crowded or unsafe environments.

We further explored the interaction of genetic risk and experience for anxiety and depression symptoms at age 8 years. Although independent main effects of genetic risk and environmental risk accounted for most of the variance in child behavior symptoms, we found GxE interactions that supported both the diathesis-stress and bioecological models of development (Vendlinski et al., 2011). Associations with parent psychopathology symptoms and child anxiety and depression symptoms were higher for those at elevated environmental risk (e.g., cumulative risk that considered socioeconomic status, single-parent household, 2 or more stressful life events in the past year, greater perceived negative impact of life events, and observed maternal negativity). Consistent with the bioecological model, higher stress environments led to greater risk for anxiety and depression, regardless of genetic risk as inferred from co-twin mental health. Heritability estimates for anxiety and depression symptoms were higher for children in low stress environments.

One epigenetic analysis using the MZ difference design supplements our genetic research on inhibited temperament and anxiety. We examined whole genome sequence data on a pilot sample of three early-adult MZ pairs to generate DNA methylation profiles. These three pairs were chosen to be discordant for age 15 anxiety diagnosis, afternoon cortisol levels across three days at age 8 years and amygdala-modulated blood-oxygen-level-dependent

signal recovery at age 15 years in an fMRI task. Both of these biological measures are linked to behavioral anxiety. There were 230 significantly differentially methylated sites, each with a minimum of 8 contiguous CpG dinucleotides. These sites could be annotated to 183 genes (often located in the promoter or transcription factor regions), including known stress-related genes such as *NAVI*, *IGF2*, *GNAS*, and *CRTCI*. Importantly, the differential methylation levels in these 230 regions consistently differentiated the more anxious co-twins from the less anxious member in each of the three pairs (Alisch et al., 2017).

Studies of Other Aspects of Mental and Physical Health

Rumination

Cognitive processes such as rumination and brooding are associated with risk for depression. In an early adolescent sample, we observed phenotypic associations among depressed mood, rumination, and distraction. Heritability was moderate for depression (54%), and lower for brooding (21%) and distraction (30%) (Moore et al., 2013). Bivariate genetic analyses demonstrated that the association between brooding and depression symptoms was primarily due to shared genetic factors.

In a partially successful attempt to replicate two candidate gene results in the literature, we first examined a well-known single nucleotide polymorphism (SNP) at codon 66 in the *BDNF* gene, which specifies a Val/Met amino acid substitution. We found higher brooding among *BDNF*Met carriers, and the genetic effect was carried by more physically mature adolescents. Moreover, status for two *CRHR1* SNPs and maternal depression interacted, such that the homozygous minor genotype was protective against brooding when adolescents' mothers had more symptoms of depression (Van Hulle, Clifford et al., 2017). Pending further replication, these findings provide partial support for the influence of candidate genes in two environmentally sensitive systems on a putative endophenotype for depression.

Suicidal ideation

Following national trends, a distressing portion of our sample screens positive for suicidal ideation, which is a strong predictor of suicide attempts (Nock et al., 2008). Comparing twins with suicidal ideation (probands) with matched nontwin controls, a brooding style of rumination, inattention, impulsivity and current depression all increased the odds of experiencing suicidal thoughts (odds ratios [ORs] 2.1–3.0). When probands were compared with their discordant co-twins, only inattention remained a significant predictor of suicidal ideation (OR = 1.9). Crucially, current depression did not distinguish probands from their co-twins who did not experience suicidal thoughts (Sarkisian et al., 2019), suggesting that nondiagnostic cognitive factors are a useful addition to risk prediction.

In follow-up research (Sarkisian, 2019), we showed that the association of attentional problems and related problem-solving behaviors with suicidal ideation holds when these predictors are measured seven years earlier. That is, twins who had more attentional problems and exhibited less persistence during behavioral problem-solving tasks than their co-twins during childhood were more likely to experience suicidal ideation as adolescents.

Given the key role that attentional processes play in anxiety disorders, we hypothesize that anxious behavioral patterns and anxiety-relevant circuitry are similarly influenced longitudinally and concurrently by nonshared environmental effects. Thus, our twin difference approach identifies attentional problems as a novel predictor of suicidal ideation, and we are now analyzing the neural basis and developmental antecedents of this association.

Obesity

Obesity is a global public health crisis. We investigated whether temperament measures of control and reward-related behavior predict early adolescent adiposity (body mass index 85th sex and age-percentile). Higher inhibitory control ratings on behavioral ratings from the ‘Tower of Patience’ task at age 7 years almost halved the odds of age 12 overweight/obesity in females (OR = 0.52, $p = 0.10$), but not in males (OR = 1.27, $p = 0.63$; Javaras, 2012). Similarly, higher ‘virtue’ measures (no bold cheating during the ‘Throwing Game’) almost halved the odds of age 12 overweight/obesity in females (OR = 0.56, $p = 0.06$), but not in males (OR = 0.96, $p = 0.91$). Controlling for socioeconomic status, IQ and parent adiposity had little effect on the relationships. Parents’ ratings at age 7 of lower inhibitory control, lower attentional focusing, and higher impulsivity also predicted higher adiposity in females at age 12 (Javaras, 2012).

Peer victimization

Peer victimization is a widespread social stressor impacting the lives of many children and adolescents. Despite its well-documented associations with adverse outcomes, mechanisms linking peer victimization to these outcomes remain largely uninvestigated. We considered the experience of peer victimization—the experience of being bullied—during early adolescence and concurrent anxiety and depression symptoms and attentional response bias during an affective go/no-go task from the Cambridge Neuropsychological Test Automated Battery (Cambridge Cognition, 2019; Robbins et al., 1994). We used the MZ difference design, which controls for genetic factors, gender, age, socioeconomic status and other confounders, and a signal detection approach. Twins who experienced more severe peer victimization were biased towards detecting goal relevant stimuli during the go/no-go task (Carroll et al., 2019). The finding held when anxiety and depression were statistically controlled. Thus, our findings suggest an environmentally salient relation between peer victimization and goal-oriented selective attention. Our work identifies selective attention as a candidate for future mechanistic investigation linking peer victimization to adverse outcomes.

Sensory Over-Responsiveness

Sensory over-responsivity, characterized by highly aversive or painful responses to everyday sensory experiences, has been a major theme of our work. Among the understudied sensory-related behavioral phenotypes, we generally focus on auditory and tactile over-responsiveness. Children with sensory over-responsivity may find the school gymnasium or cafeteria environment too loud, or they may experience an extremely negative reaction to subtle noise from certain light fixtures. Similarly, children may have an extremely negative reaction to certain food or clothing textures, or dislike going barefoot at home or outdoors.

Our recent work on sensory issues focuses on chronicity and genetic transmission from parents. Our longitudinal data identified chronicity for sensory challenges from age 2 to 7 years, with a trend toward greater severity at age 7 years (Van Hulle et al., 2015). Prematurity and low birth weight were more common in the chronic symptom group. Chronicity was also predicted by features of temperament such that greater fearfulness and less soothability during toddlerhood predicted greater symptoms of tactile over-responsiveness (Van Hulle et al., 2015). Similar results were found for symptoms of auditory over-responsiveness.

Parents also completed sensory profiles and diagnostic interviews. Mothers with a diagnosis of anxiety or depression reported more frequent sensory symptoms (Van Hulle et al., 2018). Interestingly, children of parents with affective disorders were at greater risk for sensory over-responsivity. Specifically, parent depression uniquely predicted adolescent sensory symptoms, even after accounting for parent sensory challenges. Moreover, father alcohol abuse/dependency predicted offspring sensory over-responsivity symptoms (Van Hulle et al., 2018). In summary sensory over-responsiveness both accompanies recognized clinical conditions and occurs independently of these conditions. Thus, sensory over-responsiveness appears as an under-recognized transdiagnostic phenotype with partial genetic underpinnings, and the recent addition of the sensorimotor domain to National Institute of Mental Health's Research Domain Criteria appears well-justified.

Comorbidity of attention measures with ADHD and anxiety

In investigating comorbidity during adolescence ($n = >1,000$ twins), we found that the association between attentional control, ADHD, and anxiety symptoms was due to shared genetic and nonshared environmental factors (Brooker et al., 2019). Shared genetic factors also accounted for co-occurring anxiety and ADHD symptoms, even after controlling for attention. Also, shared genetic factors explained the association between adolescent attentional control and four subtypes of anxiety (e.g., general anxiety, separation anxiety, social anxiety, and obsessive and compulsive anxiety), with some specificity and distinct etiology for anxiety subtypes (Gagne et al., 2017).

Future Directions

This abbreviated account of our recent results suggests many avenues for investigation. The sample sizes afford the possibility to examine selected subsamples (e.g., subsamples enriched for symptoms) and for many more longitudinal analyses. To date, we have focused more on anxiety and depression than on disinhibitory symptoms although the extant data allow for extensive examination of ADHD and conduct problems. We plan new assessments with early adulthood outcomes, deeper assessment of experiential differences using ecological momentary assessment, and a greater focus on general health outcomes. We welcome interest in collaboration.

Acknowledgements

This work was supported by the National Institute of Mental Health (R01-MH101504, R01-MH059785, R01-MH069793, and R37-MH050560), the Wisconsin Center for Affective Science (P50-MH069315), two Conte Neuroscience Centers (P50-MH084051 and P50-MH100031), the Wallace Research Foundation and the National

Alliance for Autism Research. Infrastructure support was provided by the Waisman Center via core support from the Eunice Kennedy Shriver National Institute of Child Health and Human Development (P30-HD003352 and U54-HD090256). The authors owe special gratitude to Wisconsin twins and their families for their generous time for research participation. We also thank a large team of scientific collaborators, graduate students, postdoctoral trainees, research staff, and undergraduate students. Over 450 undergraduate students at the University of Wisconsin–Madison received training in research and directly supported Wisconsin Twin Project research activities.

References

- Adluru N, Luo Z, Van Hulle C, Schoen AJ, Davidson RJ, Alexander AL, & Goldsmith HH (2017). Anxiety-related experience-dependent white matter structural differences in adolescence: A monozygotic twin difference approach. *Scientific Reports*, 7(1), 8749. 10.1038/s41598-017-08107-6 [PubMed: 28821748]
- Alisch RS, Van Hulle C, Chopra P, Bhattacharyya A, Zhang S-C, Davidson RJ, ... Goldsmith HH (2017). A multi-dimensional characterization of anxiety in monozygotic twin pairs reveals susceptibility loci in humans. *Translational Psychiatry*, 7(12), 1282. 10.1038/s41398-017-0047-9 [PubMed: 29225348]
- Brooker RJ, Buss KA, Lemery-Chalfant K, Aksan N, Davidson RJ, & Goldsmith HH (2013). The development of stranger fear in infancy and toddlerhood: Normative development, individual differences, antecedents, and outcomes. *Developmental Science*, 16(6), 864–878. 10.1111/desc.12058 [PubMed: 24118713]
- Brooker RJ, Buss KA, Lemery-Chalfant K, Aksan N, Davidson RJ, & Goldsmith HH (2014). Profiles of observed infant anger predict preschool behavior problems: Moderation by life stress. *Developmental Psychology*, 50(10), 2343–2352. 10.1037/a0037693 [PubMed: 25151247]
- Brooker RJ, Canen MJ, Davidson RJ, & Goldsmith HH (2017). Short- and long-term stability of alpha asymmetry in infants: Baseline and affective measures. *Psychophysiology*, 54(8), 1100–1109. 10.1111/psyp.12866 [PubMed: 28383124]
- Brooker RJ, Davidson RJ, & Goldsmith HH (2016). Maternal negative affect during infancy is linked to disrupted patterns of diurnal cortisol and alpha asymmetry across contexts during childhood. *Journal of Experimental Child Psychology*, 142, 274–290. 10.1016/j.jecp.2015.08.011 [PubMed: 26422661]
- Brooker RJ, Moore MN, Van Hulle C, Beekman CR, Begnoche JP, Lemery-Chalfant K, & Goldsmith HH (2019). Attentional control explains covariation between symptoms of attention-deficit/hyperactivity disorder and anxiety during adolescence. *Journal of Research on Adolescence*. 10.1111/jora.12506
- Brooker RJ, Phelps RA, Davidson RJ, & Goldsmith HH (2016). Context differences in delta beta coupling are associated with neuroendocrine reactivity in infants: Delta-Beta Coupling and Cortisol in Infants. *Developmental Psychobiology*, 58(3), 406–418. 10.1002/dev.21381 [PubMed: 26566605]
- Burghy CA, Fox ME, Cornejo MD, Stodola DE, Sommerfeldt SL, Westbrook CA, ... Birn RM (2016). Experience-driven differences in childhood cortisol predict affect-relevant brain function and coping in adolescent monozygotic twins. *Scientific Reports*, 6, 37081. 10.1038/srep37081 [PubMed: 27872489]
- Cambridge Cognition (2019). CANTAB® [Cognitive assessment software]. www.cantab.com.
- Carroll IC, Planalp EM, Van Hulle C, & Goldsmith HH (2019). Peer victimization and selective attention in adolescence: Evidence from a monozygotic twin difference design. *Journal of Abnormal Child Psychology*. 10.1007/s10802-019-00516-7
- Chung MK, Luo Z, Adluru N, Alexander AL, Davidson RJ, & Goldsmith HH (2018). Heritability of nested hierarchical structural brain network. 2018 40th Annual International Conference of the IEEE Engineering in Medicine and Biology Society (EMBC), 554–557. 10.1109/EMBC.2018.8512359
- Clifford S, Lemery-Chalfant K, & Goldsmith HH (2015). The unique and shared genetic and environmental contributions to fear, anger, and sadness in childhood. *Child Development*, 86(5), 1538–1556. 10.1111/cdev.12394 [PubMed: 26182850]

- Coan JA, Allen J, & McKnight PE (2006). A capability model of individual differences in frontal EEG asymmetry. *Biological Psychology*, 72(2), 198–207. 10.1016/j.biopsycho.2005.10.003 [PubMed: 16316717]
- Cuthbert BN (2014). The RDoC framework: Facilitating transition from ICD/DSM to dimensional approaches that integrate neuroscience and psychopathology. *World Psychiatry*, 13(1), 28–35. 10.1002/wps.20087 [PubMed: 24497240]
- Eggum-Wilkens ND, Lemery-Chalfant K, Aksan N, & Goldsmith HH (2015). Self-conscious shyness: Growth during Toddlerhood, Strong Role of Genetics, and No Prediction from Fearful Shyness. *Infancy*, 20(2), 160–188. 10.1111/infa.12070 [PubMed: 25685095]
- Gagne JR, & Goldsmith HH (2011). A longitudinal analysis of anger and inhibitory control in twins from 12 to 36 months of age. *Developmental Science*, 14(1), 112–124. 10.1111/j.1467-7687 [PubMed: 21159093]
- Gagne JR, Miller MM, & Goldsmith HH (2013). Early-but modest-gender differences in focal aspects of childhood temperament. *Personality and Individual Differences*, 55(2), 95–100. 10.1016/j.paid.2013.02.006 [PubMed: 24958978]
- Gagne JR, O'Sullivan DL, Schmidt NL, Spann CA, & Goldsmith HH (2017). The shared etiology of attentional control and anxiety: An adolescent twin study. *Journal of Research on Adolescence*, 27(1), 122–138. 10.1111/jora.12260 [PubMed: 28498525]
- Gagne JR, Van Hulle C, Aksan N, Essex MJ, & Goldsmith HH (2011). Deriving childhood temperament measures from emotion-eliciting behavioral episodes: Scale construction and initial validation. *Psychological Assessment*, 23(2), 337–353. 10.1037/a0021746 [PubMed: 21480723]
- Goldsmith HH, Lemery KS, Schmidt NL, Schmidt CK, Chow OK, & Justen AA (2010). Field administration manual for the Laboratory Temperament Assessment Battery: Middle Childhood Version. Psychology Department: University of Wisconsin–Madison.
- Goldsmith HH, Lemery-Chalfant K, Schmidt NL, Arneson CL, & Schmidt CK (2007). Longitudinal analyses of affect, temperament, and childhood psychopathology. *Twin Research and Human Genetics*, 10(1), 118–126. [PubMed: 17539371]
- Goldsmith HH, & Rothbart MK (1996). The Laboratory Temperament Assessment Battery (LAB-TAB): Prelocomotor Version 3.0. Technical manual. Department of Psychology, University of Wisconsin–Madison.
- Insel TR (2014). The NIMH Research Domain Criteria (RDoC) Project: Precision medicine for psychiatry. *American Journal of Psychiatry*. 10.1176/appi.ajp.2014.14020138
- Javaras KN (2012). The relationship of adolescent and young adult adiposity to control- and reward-related temperament and brain structure (Unpublished dissertation). Department of Psychology: University of Wisconsin–Madison, Madison, WI.
- Johnson MM, Dismukes AR, Vitacco MJ, Breiman C, Fleury D, & Shirtcliff EA (2014). Psychopathy's Influence on the Coupling between Hypothalamic-Pituitary-Adrenal and –Gonadal Axes among Incarcerated Adolescents. *Developmental Psychobiology*, 56(3), 448–458. 10.1002/dev.21111 [PubMed: 23852424]
- Knyazev GG (2007). Motivation, emotion, and their inhibitory control mirrored in brain oscillations. *Neuroscience & Biobehavioral Reviews*, 31(3), 377–395. 10.1016/j.neubiorev.2006.10.004 [PubMed: 17145079]
- Lemery-Chalfant K, Kao K, Swann G, & Goldsmith HH (2013). Childhood temperament: Passive gene–environment correlation, gene–environment interaction, and the hidden importance of the family environment. *Development and Psychopathology*, 25(1), 51–63. 10.1017/S0954579412000892 [PubMed: 23398752]
- Moore MN, Salk RH, Van Hulle C, Abramson LY, Hyde JS, Lemery-Chalfant K, & Goldsmith HH (2013). Genetic and environmental influences on rumination, distraction, and depressed mood in adolescence. *Clinical Psychological Science*, 1(3), 316–322. 10.1177/2167702612472884 [PubMed: 23956956]
- Nock MK, Borges G, Bromet EJ, Alonso J, Angermeyer M, Beautrais A, ... Williams D (2008). Cross-national prevalence and risk factors for suicidal ideation, plans and attempts. *The British Journal of Psychiatry*, 192(2), 98–105. 10.1192/bjp.bp.107.040113 [PubMed: 18245022]

- Planalp EM, & Goldsmith HH (2019). Observed profiles of infant temperament: Stability, heritability, and associations with parenting. *Child Development*. 10.1111/cdev.13277
- Planalp EM, Van Hulle C, Gagne JR, & Goldsmith HH (2017). The infant version of the Laboratory Temperament Assessment Battery (Lab-TAB): Measurement properties and implications for concepts of temperament. *Frontiers in Psychology*, 8 10.3389/fpsyg.2017.00846
- Planalp EM, Van Hulle C, & Goldsmith HH (2019). Parenting in context: Marital adjustment, parent affect, and child temperament in complex families. *Journal of Family Psychology*. 10.1037/fam0000511
- Planalp EM, Van Hulle C, Lemery-Chalfant K, & Goldsmith HH (2017). Genetic and environmental contributions to the development of positive affect in infancy. *Emotion*, 17(3), 412–420. 10.1037/emo0000238 [PubMed: 27797564]
- Robbins TW, James M, Owen AM, Sahakian BJ, McInnes L, & Rabbitt P (1994). Cambridge Neuropsychological Test Automated Battery (CANTAB): A factor analytic study of a large sample of normal elderly volunteers. *Dementia*, 5(5), 266–281. [PubMed: 7951684]
- Sarkisian KL (2019). Cognitive tendencies, problem-solving behavior, and family emotional functioning as predictors of adolescent suicidal ideation (Unpublished dissertation). Department of Psychology: University of Wisconsin–Madison, Madison, WI.
- Sarkisian KL, Van Hulle C, & Goldsmith HH (2019). Brooding, inattention, and impulsivity as predictors of adolescent suicidal ideation. *Journal of Abnormal Child Psychology*, 47(2), 333–344. 10.1007/s10802-018-0435-5 [PubMed: 29808397]
- Schmidt NL, Lemery-Chalfant K, & Goldsmith HH (in press). Wisconsin Twin Project Overview: Temperament and Affective Neuroscience. *Twin Research and Human Genetics*.
- Schmidt NL, Van Hulle C, Brooker RJ, Meyer LR, Lemery-Chalfant K, & Goldsmith HH (2013). Wisconsin Twin Research: Early development, childhood psychopathology, autism, and sensory over-responsivity. *Twin Research and Human Genetics*, 16(1), 376–384. 10.1017/thg.2012.105 [PubMed: 23200241]
- Scott BG, Lemery-Chalfant K, Clifford S, Tein J, Stoll R, & Goldsmith HH (2016). A twin factor mixture modeling approach to childhood temperament: Differential heritability. *Child Development*, 87(6), 1940–1955. 10.1111/cdev.12561 [PubMed: 27291568]
- Staufenbiel SM, Penninx B, Spijker AT, Elzinga BM, & van Rossum E (2013). Hair cortisol, stress exposure, and mental health in humans: A systematic review. *Psychoneuroendocrinology*, 38(8), 1220–1235. 10.1016/j.psyneuen.2012.11.015 [PubMed: 23253896]
- Van Hulle C, Clifford S, Moore MN, Lemery-Chalfant K, & Goldsmith HH (2017). Partial replication of two rumination-related candidate gene studies. *Cognition & Emotion*, 31(5), 963–971. 10.1080/02699931.2016.1168779 [PubMed: 27073970]
- Van Hulle C, Lemery-Chalfant K, & Goldsmith HH (2015). Trajectories of sensory over-responsivity from early to middle childhood: Birth and temperament risk factors. *PloS One*, 10(6), e0129968 10.1371/journal.pone.0129968 [PubMed: 26107259]
- Van Hulle C, Lemery-Chalfant K, & Goldsmith HH (2018). Parent-offspring transmission of internalizing and sensory over-responsivity symptoms in adolescence. *Journal of Abnormal Child Psychology*, 46(3), 557–567. 10.1007/s10802-017-0300-y [PubMed: 28393325]
- Van Hulle C, Moore MN, Lemery-Chalfant K, Goldsmith HH, & Brooker RJ (2017). Infant stranger fear trajectories predict anxious behaviors and diurnal cortisol rhythm during childhood. *Development and Psychopathology*, 29(03), 1119–1130. 10.1017/S0954579417000311 [PubMed: 28318454]
- Van Hulle C, Shirtcliff EA, Lemery-Chalfant K, & Goldsmith HH (2012). Genetic and environmental influences on individual differences in cortisol level and circadian rhythm in middle childhood. *Hormones and Behavior*, 62(1), 36–42. 10.1016/j.yhbeh.2012.04.014 [PubMed: 22583671]
- Vendlinski MK, Javaras KN, Van Hulle C, Lemery-Chalfant K, Maier R, Davidson RJ, & Goldsmith HH (2014). Relative influence of genetics and shared environment on child mental health symptoms depends on comorbidity. *PloS One*, 9(7), e103080 10.1371/journal.pone.0103080 [PubMed: 25077799]
- Vendlinski MK, Lemery-Chalfant K, Essex MJ, & Goldsmith HH (2011). Genetic risk by experience interaction for childhood internalizing problems: Converging evidence across multiple methods.

Journal of Child Psychology and Psychiatry, 52(5), 607–618. 10.1111/j.1469-7610.2010.02343.x
[PubMed: 21198591]

Author Manuscript

Author Manuscript

Author Manuscript

Author Manuscript

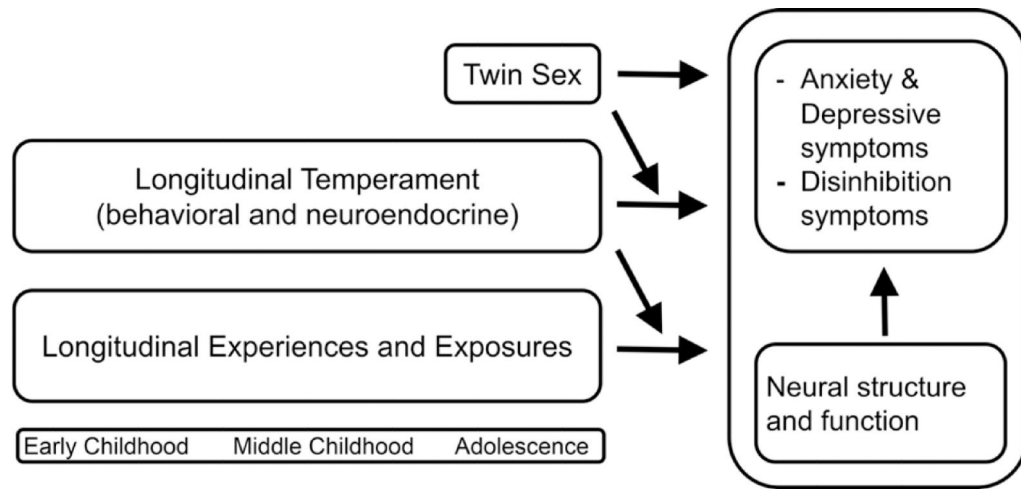


Fig. 1. Longitudinal framework for generating hypotheses in the Wisconsin Twin Project

Author Manuscript

Author Manuscript

Author Manuscript

Author Manuscript

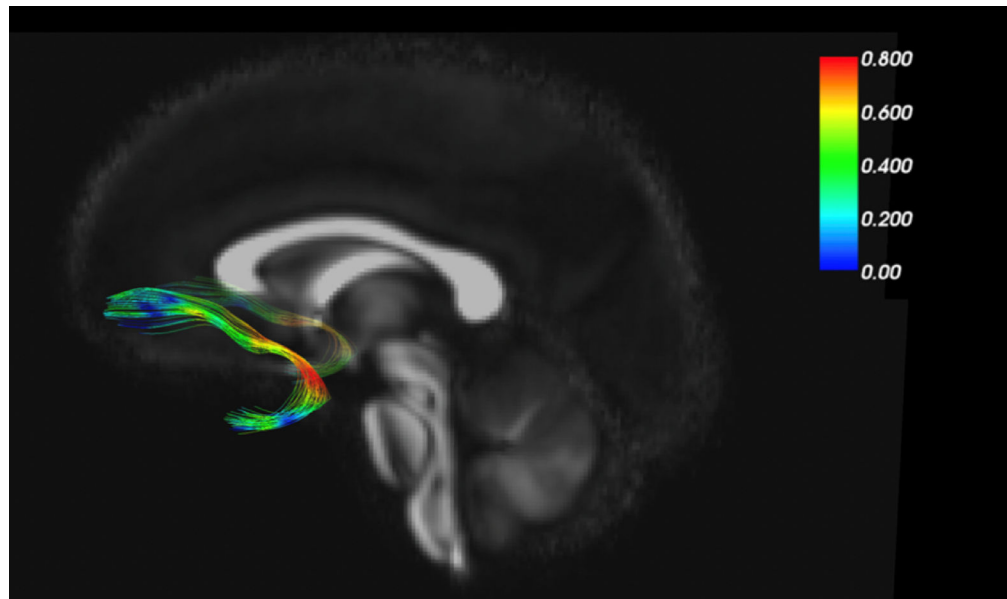


Fig. 2.

MZ twin similarity in FA Varies along the uncinatus fasciculus.

Note. This figure depicts the white matter pathway uncinatus fasciculus reconstructed using 100 MZ twins' DTI data described in Adluru et al. (2017). The color spectrum indicates levels of similarities of underlying WM microstructure (FA) across the whole uncinatus fasciculus structure. Color available in online version.

Table 1.

Univariate biometric analyses of the probability of latent class membership for symptoms in childhood (adapted from Vendlinski et al., 2014)

Latent Symptom Classes	A ^a	C ^a	E ^a	-2LL Saturated	-2LL ACE	χ^2
C1. Mildly anxious	0.42	0.0	0.58	2578.4	2559.1	19.3***
C2. Moderately oppositional	0.47	0.0	0.53	2397.2	2377.8	19.4***
C3. Moderately impulsive & inattentive	0.51	0.0	0.49	2428.8	2424.7	4.1
C4. Low symptom	0.29	0.49	0.26	2371.6	2332.7	38.9***
C5. Mildly oppositional & impulsive	0.44	0.01	0.55	2446.3	2434.1	12.2**
C6. Moderately anxious & non-conduct externalizing	0.33	0.22	0.45	1881.0	1867.2	13.8**
C7. Moderately externalizing	0.37	0.17	0.46	1750.8	1732.8	18.0***
C8. Moderately internalizing & severely externalizing	0.40	0.30	0.29	1109.5	1095.5	14.0**

Note.

p<.001

**
p<.01

A, C, and E refer to Additive, Common (shared) environmental, and unique (nonshared) Environmental sources of variation. N= 3223 individual twins; mean age = 7.5 years; 51% female.