

Disease-Specific Human Glycine Receptor α_1 Subunit Causes Hyperekplexia Phenotype and Impaired Glycine- and GABA_A-Receptor Transmission in Transgenic Mice

Lore Becker,^{1,2} Jörg von Wegerer,³ Johannes Schenkel,² Hanns-Ulrich Zeilhofer,⁴ Dieter Swandulla,³ and Hans Weiher¹

¹Institut für Diabetesforschung, 80804 Munich, Germany, ²Forschungszentrum Karlsruhe, Institut für Toxikologie und Genetik, 76021 Karlsruhe, Germany, ³Institut für Physiologie, Universität Bonn, 53111 Bonn, Germany, and ⁴Institut für Experimentelle und Klinische Pharmakologie und Toxikologie, Universität Erlangen, 91054 Erlangen, Germany

Hereditary hyperekplexia is caused by disinhibition of motoneurons resulting from mutations in the ionotropic receptor for the inhibitory neurotransmitter glycine (GlyR). To study the pathomechanisms involved *in vivo*, we generated and analyzed transgenic mice expressing the hyperekplexia-specific dominant mutant human GlyR α_1 subunit 271Q. Tg271Q transgenic mice, in contrast to transgenic animals expressing a wild-type human α_1 subunit (tg271R), display a dramatic phenotype similar to spontaneous and engineered mouse mutations expressing reduced levels of GlyR. Electrophysiological analysis in the ventral horn of the spinal cord of tg271Q mice revealed a diminished GlyR transmission. Intriguingly, an even larger re-

duction was found for GABA_A-receptor-mediated inhibitory transmission, indicating that the expression of this disease gene not only affects the glycinergic system but also leads to a drastic downregulation of the entire postsynaptic inhibition. Therefore, the transgenic mice generated here provide a new animal model of systemic receptor interaction to study inherited and acquired neuromotor deficiencies at different functional levels and to develop novel therapeutic concepts for these diseases.

Key words: hyperekplexia; transgenic mouse model; neuromotor phenotype; glycine receptor; GABA_A receptor; impaired postsynaptic inhibition

Human startle disease, or hereditary hyperekplexia, is a rare inborn neuromotor disease and one of the few examples of a syndrome linked to a defined mutation in a neuroreceptor ion-channel subunit gene (Andrew and Owen, 1997). The disease is characterized by an exaggerated startle reflex (i.e., overreaction to unexpected stimuli with myoclonic jerks and stiffness), often resulting in uncontrolled falling. In addition, uninduced nocturnal convulsive seizures occur occasionally. Enhanced startle reactions can already be detected in newborns in whom generalized hypertonia has also been observed (Suhren et al., 1966). Electromyographic studies reveal distinct overexcitability and diminished inhibition in patients with hyperekplexia (Matsumoto et al., 1992; Floeter et al., 1996).

The disease has been shown to result from mutations in the α_1 subunit of the strychnine-sensitive glycine receptor (GlyR) (Shiang et al., 1993), which is the major inhibitory chloride channel in the spinal cord and the brainstem (Betz, 1992). In the adult mammal, the GlyR is composed of three copies of the ligand-binding α_1 subunit and two copies of the structural β subunit, which targets the GlyR to the postsynaptic membrane by interacting with the anchoring protein gephyrin (Meyer et al., 1995; Feng et al., 1998).

The properties of mutant subunits have been studied in detail

in vitro and in transfected heterologous cell systems (Langosch et al., 1994; Rajendra et al., 1994; Laube et al., 1995). However, it emerged from the study of mouse mutants with GlyR defects that *in vivo* mouse models were indispensable in understanding the pathomechanisms in patients. For example, although functional α_1 subunit homomers are assembled in reconstituted *Xenopus* oocytes and in transfected non-neuronal tissue culture (Langosch et al., 1994; Rajendra et al., 1994), in the adult rodent the β subunit is essential for the formation of complexes containing functional α_1 subunit (Becker et al., 1992, 2000; Hartenstein et al., 1996). In addition, *in vivo* models are necessary to study possible interactions between different neurotransmitter systems in healthy and diseased states because the complexity of these interactions is not known and is therefore difficult to reconstitute. In patients with startle disease, such interactions were suggested by the therapeutic success of treatment with agonists of the other major inhibitory neurotransmitter receptor, the GABA_A receptor (Ryan et al., 1992; Stayer and Meinck, 1998).

Although several genetically recessive mouse mutants exist, we generated a mouse model that more closely resembles a human dominant GlyR disease. The mutant human gene used to generate transgenic mice is associated with the most frequent genetically dominant form of hereditary hyperekplexia in humans (Shiang et al., 1993; Andrew and Owen, 1997). The mutation substitutes a glutamine for an arginine at position 271 in the extracellular domain of the GlyR α_1 molecule; it has been shown *in vitro* and in tissue culture to strongly reduce receptor binding to the natural ligand glycine, although it does not significantly affect receptor binding to the antagonist strychnine (Langosch et al., 1994; Rajendra et al., 1994). We received transgenic animals displaying a characteristic neuromotor phenotype attributable to

Received Aug. 6, 2001; revised Nov. 29, 2001; accepted Dec. 19, 2001.

This work was supported by grants from the Bundesministerium für Forschung und Bildung (H.W.), the Deutsche Forschungsgemeinschaft (D.S.), and the Fritz Thyssen Stiftung.

Correspondence should be addressed to Hans Weiher, Institut für Diabetesforschung, Kölner Platz 1, 80804 Munich, Germany. E-mail: hans.weiher@lrz.uni-muenchen.de.

Copyright © 2002 Society for Neuroscience 0270-6474/02/222505-08\$15.00/0

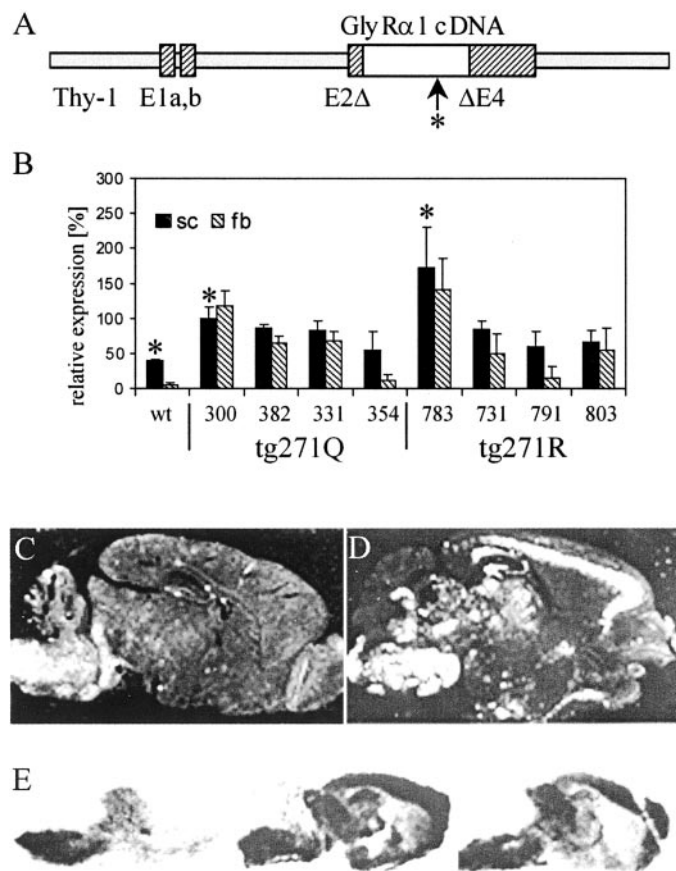


Figure 1. Transgene expression in GlyR transgenic mice is shown. *A*, Transgene constructs used. The human GlyR cDNAs (open bar) were cloned in a murine genomic *Thy-1* gene construct in which a region from exon 2 to exon 4 was deleted (Moechars et al., 1996) to confer neuron-specific expression (hatched bars, exon sequences; solid gray bars, intron sequences). The hyperekplexia-specific point mutation is marked by an arrow and an asterisk. *B*, Semiquantitative RT-PCR of brainstem and spinal cord (sc, black bars) and forebrain (fb, hatched bars) of different mouse lines. The expression of tg271Q-300 in spinal cord was set as 100%. The differences in spinal cord between wt and tg271Q-300 and tg271R-783 mice are significant (asterisk; $p < 0.05$). *C, D*, *In situ* hybridization of sagittal brain sections with GlyR α -specific RNA probes of a wt (*C*) and a tg271Q-300 (*D*) animal. *E*, ^3H -strychnine binding to sagittal sections of wt (left), tg271Q-300 (center), and tg271R-783 (right) mice.

mutant transgene expression. Biochemical analyses confirmed the *in vitro* data, and electrophysiological studies revealed a novel interaction between the different inhibitory neurotransmitter systems *in vivo*.

MATERIALS AND METHODS

Constructs and transgenic mice. A *SalI*-fragment of 1.7 kb containing the human GlyR-subunit cDNA (Grønningloh et al., 1990b) was cloned into the unique *XhoI* site of a *Thy-1* expression vector (Moechars et al., 1996). An *EcoRI/PvuI* fragment was used for microinjections into zygotes of C57BL/6/DBA/2 females and C57BL/6 males to generate tg271R lines. An analogous fragment in which codon 271 was mutated CGA to CAA (R→Q) was used to generate the tg271Q founders. Founders were bred with C57BL/6 to derive the experimental lines.

Expression analysis. Reverse transcriptase (RT)-PCR analysis on cortex and brainstem RNA was done using Superscript II (Invitrogen, Grand Island, NY) according to the manufacturer's instructions. GlyR α_1 -specific primers recognized endogenous and transgenic cDNA: 5'-CTCATCTTTGAGTGGCAGGA-3' and 5'-GCATCCATGTTGATCCAGAA-3'. The ratio of the GlyR α_1 -specific to the β -actin-specific signal was determined. Data (Fig. 1*B*) are given as means \pm SD. Statistical

analysis was performed using ANOVA with the Bonferroni *post hoc* test.

***In situ* hybridization** was performed on sagittal sections of paraffin-embedded brains from mice of different genotypes. *In vitro* ^{35}S -labeled RNA transcripts from a 0.5 kb *XhoI/SalI* fragment of the human cDNA were used as a probe. Detection of transcripts was performed with LM-1 Photoemulsion (Amersham Biosciences, Arlington Heights, IL).

Ligand binding. Glycine-displaceable binding of ^3H -strychnine (DuPont NEN, Boston, MA) to crude membrane fractions was measured in triplicate as described previously (Becker et al., 1986). For radioligand displacement, 18 nM ^3H -strychnine was used. Data in Figure 2 are given as means \pm SD. Statistical analysis was performed using ANOVA with the Bonferroni *post hoc* test (Fig. 2*A*) or the Mann-Whitney *U* test (Fig. 2*B*).

Receptor autoradiography. Frozen sections of brain were used for radioligand binding assays. Sections were incubated with 4 nM ^3H -strychnine alone and in the presence of unlabeled strychnine and glycine. For the benzodiazepine binding, 10 nM ^3H -RO15-4513 (kindly provided by D. Benke, Institute of Pharmacology, University of Zürich, Zürich, Switzerland) in the absence or presence of flumazenil was used. A ^3H -sensitive imager plate with the Fujifilm Fluorescent image analyzer FLA2000 (Tokyo, Japan) was used for signal detection.

Phenotype analysis. Qualitatively, motor deficiencies in the animals were recognized with handling. In particular, tg271Q-300 as well as the homozygous tg271Q-382 and tg271Q-331 mice could be readily identified by a trained observer: When picked up by the tail they displayed obvious vibrations and/or showed the "hind feet clenching" phenotype. Sudden noise induced them to jump up and fall into tremor episodes, lasting for variable times even when held by the tail. Quantitative analysis was done as follows: Righting time was determined after bringing the animals into a supine position as described previously (Hartenstein et al., 1996; Becker et al., 2000) by twisting their tails. Tremor recording was performed by fixing mice by their tails to an F30 force transducer (Type 372) connected to a bridge amplifier (Type 336; both from Hugo Sachs Elektronik, March-Hugstetten, Germany). Electric signals were recorded by a Voltcraft Scope Card 220 (Voltcraft, Hirschau, Germany).

Slice preparation. Mice (both sexes) that were 14 to 21 d of age were anesthetized with ether and decapitated. The lumbar segments of the spinal cord were isolated and transferred to ice-cold standard external solution that contained (in mM): 120 NaCl, 2.5 KCl, 1 MgCl₂, 2 CaCl₂, 1.25 NaH₂PO₄, 26 NaHCO₃, 5 HEPES, and 15 glucose, pH 7.4 (310 mOsm). The dorsal side of the spinal cord was glued onto a gelatin block and 250- μm -thick transverse slices were cut with a vibratome (Campden Instruments, Loughborough, UK). Slices were incubated for 1.5–7 hr after preparation in standard external solution at 32°C and bubbled continuously with carbogene (95% O₂ and 5% CO₂).

Electrophysiological recordings. Electrophysiological recordings were made from visually identified large-diameter neurons (>20 μm) in the ventral horn, presumptive α -motoneurons. They were visualized with the infrared gradient contrast technique (Dodt and Zieglensberger, 1994) and monitored by a video microscopic system mounted on an upright microscope (Zeiss Axioskop FS, Jena, Germany; Infracontrast; Luigs & Neumann, Ratingen, Germany; video camera CF 8/1; Kappa Messtechnik, Gleichen, Germany). Slices were kept in position by a nylon mesh fixed to a U-shaped platinum wire. They were continuously superfused by standard external solution bubbled with carbogene. The experiments were performed at room temperature (20 \pm 2°C). Patch pipettes were pulled from borosilicate glass capillaries (Kimax 51; Kimble, Vineland, NJ) by a DMZ Universal puller (Zeitz, Munich, Germany) and tip-polished by default. The pipette resistance ranged between 3 and 5 M Ω when filled with standard internal solution (in mM: 130 potassium gluconate, 20 KCl, 0.05 EGTA, 3 Na₂ATP, 0.1 Na₃GTP, 10 HEPES, pH 7.30) (290 mOsm). Lidocaine *N*-ethyl bromide (QX-314) (5 μM) was added to the internal solution to block voltage-activated sodium currents in the recorded neuron. Postsynaptic currents (PSCs) were elicited via an ipsilaterally placed glass electrode (cathode, Kimax 51, inner tip diameter \sim 2 μm), at a circumradial distance of \sim 50 μm to the recording electrode, filled with 1 mM NaCl. Electrical stimulation (100 μsec ; 1–5 V; AM Systems, Everett, MA) occurred at intervals of 10 sec. Recordings were performed in the whole-cell configuration of the patch-clamp technique with an EPC-7 patch-clamp amplifier (List Elektronik, Pfungstadt, Germany). Currents were monitored and stored with the Pulse Program (Heka Elektronik, Lambrecht/Pfalz, Germany) on a Macintosh Quadra 950 computer, linked to an ITC-16 interface (InstruTech, Port Washington, NY). To facilitate the establishment of a seal on the selected neuron, the external CaCl₂ concentration was augmented to 3 mM during

whether the GlyR in the spinal cord and brainstem of the transgenic animals contained transgene-derived α_1 subunits.

Reduced glycine affinity in the spinal cord of tg271Q-300 mice

To measure the amount of receptor in the transgenic animals more accurately, we used quantitative ligand-binding assays on spinal cord membrane preparations of the strongest expressing strains of both transgene tg271Q-300 and transgene tg271R-783 (Fig. 2*A*). When compared with wt animals, a slight but significant enhancement in ^3H -strychnine binding was detected, assuming similar strychnine affinities of the mutated or nonmutated human or murine α_1 subunits (Langosch et al., 1994; Rajendra et al., 1994). This is consistent with a small increment of GlyR immunoreactivity detected in Western blot analyses (data not shown). Thus, in spinal cord, α_1 -subunit-specific mRNA expression was apparently not limiting the number of membranous receptor complexes formed. Therefore, the transgenic α_1 subunits should compete here with the endogenous ones for the limiting component, most likely the endogenous β subunit.

If mutant transgene-derived subunits are incorporated into spinal cord GlyR, these should show altered pharmacological characteristics according to previous *in vitro* data (Langosch et al., 1994; Rajendra et al., 1994), in which different glycine but unchanged strychnine affinity of the mutant α_1 subunits had been demonstrated. We analyzed this by means of a ligand competition assay, comparing spinal cord membrane preparations of tg271Q-300 mice with those of wt animals. Figure 2*B* demonstrates that ^3H -strychnine binding (percentage of total) was unaltered in tg271Q transgenic mice when competing with increasing amounts of nonradioactive strychnine. However, competition with an excess of the physiological ligand glycine revealed a significant difference in glycine affinity in the tg271Q-300 transgenic mice (Fig. 2*C*); at 1.5 and 2 log μM glycine, the competition curve is shifted.

Furthermore, we investigated ligand binding at the histological level on tissue sections through the upper spinal cord region of transgenic and wt animals. We included two mutant tg271Q strains, tg271Q-300 and tg271Q-382, and one strain expressing the wt human α_1 subunit (Fig. 1*B*). In accordance with the binding assays illustrated in Figure 2*A*, ^3H -strychnine binding *in situ* appeared not to be different between the different genotypes (Fig. 2*D*, top two rows). In contrast to the strychnine binding, in the animals carrying the human mutant transgene (tg271Q-300 and tg271Q-382) glycine competes less efficiently for GlyR binding compared with wt animals (Fig. 2*D*, bottom two rows). Mice with the human wt transgene (tg271R-783) show glycine competition similar to nontransgenic animals, despite their high transgene expression (Figs. 1*B*, 2*D*).

In summary, the ectopic mRNA expression of wt and mutant human GlyR α_1 subunit led to ectopic formation of ligand-binding activity. In spinal cord, in which the physiological sites of GlyR expression are located, the additional transgene-derived mutant human α_1 subunit competes for and at least partially replaces the endogenous subunit in the GlyR complex, reducing its ability to bind the natural ligand glycine.

Phenotypic characteristics of the tg271Q transgenic animals

When handling the transgenic lines described here, it became instantly apparent that tg271Q-300 animals developed spontaneous or handling-induced tremor episodes, which were most obvi-

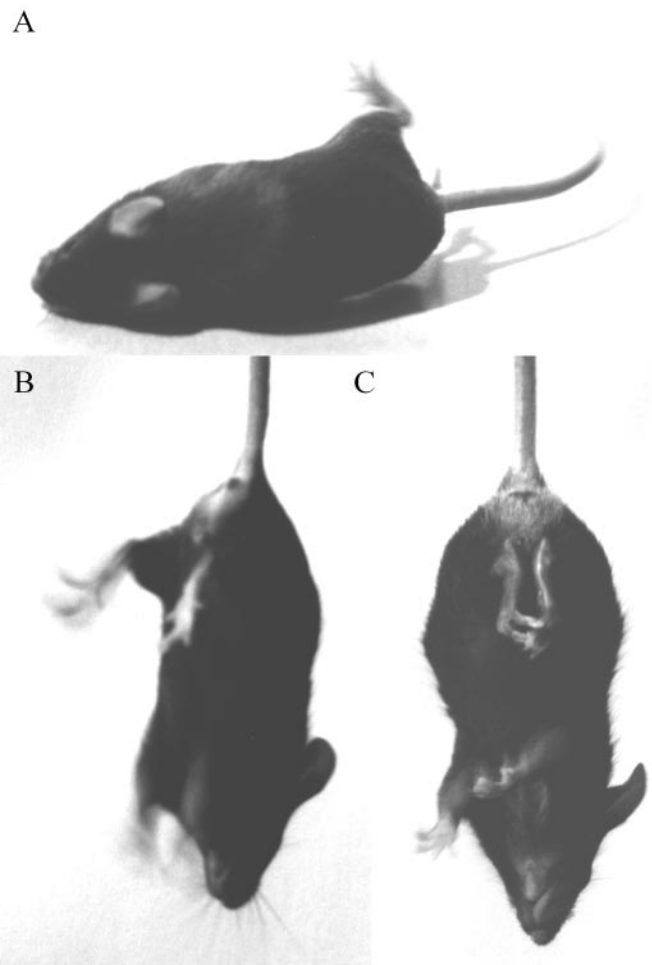


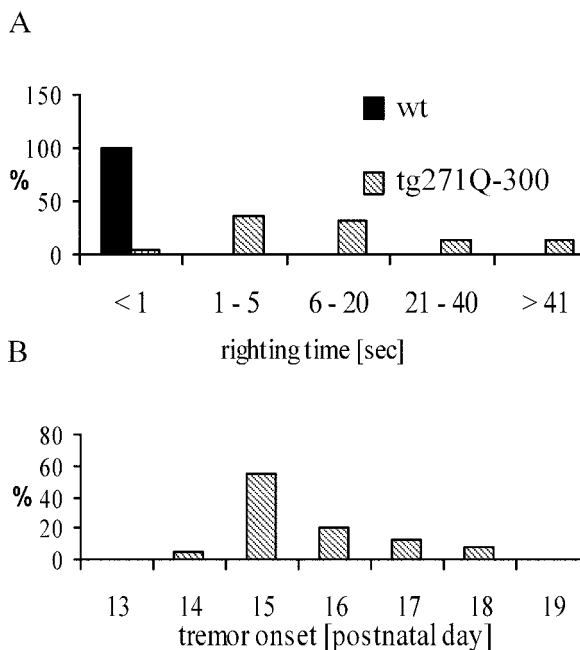
Figure 3. Phenotypic characteristics of tg271Q-300 mice. *A*, Tremor and disturbed righting when turned to the back. *B*, Handling-induced tremor, visible at the limbs. *C*, Hind feet clenching when picked up by the tail.

ous in the extremities (Fig. 3*A,B*). The startle reaction was clearly exaggerated because these animals responded noticeably by uncontrolled jerks and jumps to sudden noise or touch. Furthermore, when picked up by the tail they displayed a hind feet clenching behavior (Fig. 3*C*). Their reproductive performance is also poor. Thus far, the phenotype was very similar to that described in the recessive mouse mutants *spastic* (*spa*) (Kingsmore et al., 1994; Mulhardt et al., 1994) or *spasmodic* (*spd*, *spd^{ot}*) (Buckwalter et al., 1994; Ryan et al., 1994; Saul et al., 1994), which carry mutations in the GlyR β - or α_1 -subunit gene, respectively. Compared with these, the phenotype in tg271Q-300 mice was genetically dominant because it was observed in heterozygous transgene carriers. Homozygous tg271Q-300 animals derived from double heterozygous crosses were not viable to adulthood. Two strains with less 271Q transgene expression, tg271Q-382 and tg271Q-331, (Fig. 1*B*) also showed this *spa*-like phenotype but in an apparently gene-dosage-dependent manner (i.e., only animals homozygous for the symptoms displayed by transgenic mice) (Table 1). In tg271Q-354 animals, the lowest expressing 271Q strain, no obvious phenotype was detected. Likewise, none of the 271R strains carrying the human wt transgene displayed this phenotype, regardless of the transgene expression level.

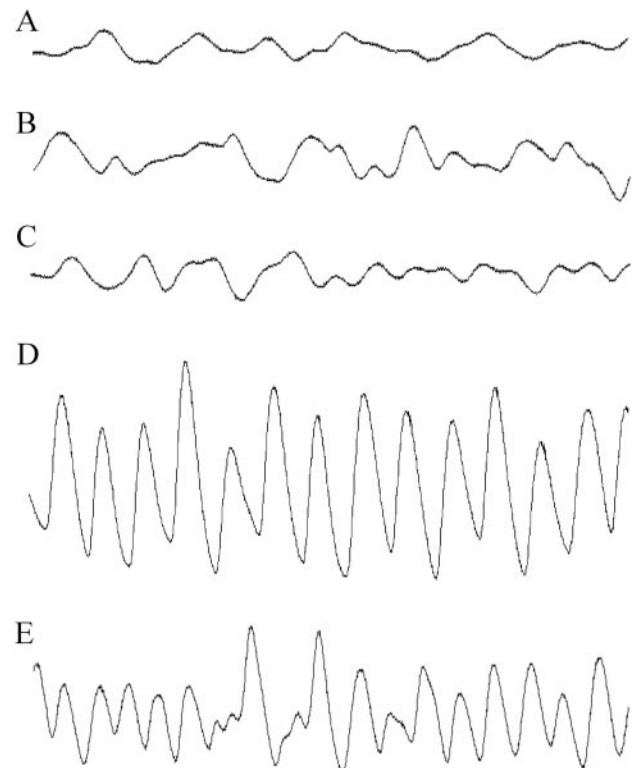
To investigate the phenotype of tg271Q-300 mice in more detail, we used several methods established to characterize GlyR-

Table 1. Transgene expression and phenotype in different GlyR α_1 transgenic mice

Transgenic mouse lines	Expression	Startle phenotype		Hind limb disorder
		tg +/+	tg +/-	
tg271Q-300	+++++	n.v. ^a	+	-
tg271Q-382	+++	+	-	-
tg271Q-331	+	(+)	-	-
tg271Q-354	+	-	-	-
tg271R-731	+++	-	-	+
tg271R-783	+++++	-	-	+
tg271R-791	++	-	-	+
tg271R-803	+	-	-	+

^an.v., Not viable.**Figure 4.** Phenotypic analysis of tg271Q-300 animals. *A*, The time required to right after being turned to the back ($n = 65$). *B*, The onset of inducible tremor ($n = 42$).

deficient mouse mutants (Hartenstein et al., 1996; Becker et al., 2000). First, we measured the righting time, which can be easily quantified and has been shown to be a reliable marker for phenotype strength (Hartenstein et al., 1996; Becker et al., 2000). Animals with normal glycinergic neurotransmission instantly right themselves when brought to a supine position. However, in GlyR mutants this reflex is impaired, allowing for the simple measurement of the time it takes for them to get back on their feet. Figure 4*A* illustrates that the righting time in tg271Q-300 mice is dramatically increased. Compared with previous studies of murine recessive GlyR mutants (Hartenstein et al., 1996; Becker et al., 2000) with respect to this task, the tg271Q-300 phenotype was similar to that of *spa* mice with remnant GlyR protein expression and ligand binding of ~10–20% of wt in the spinal cord and brainstem (Becker et al., 1992; Hartenstein et al., 1996). However, it was not as strong as the phenotype recorded from *spd^{ot}* (*spasmodic oscillator*) homozygotes (Hartenstein et al., 1996), which carry a null mutation in the GlyR α_1 gene, leading to death within 4 weeks of birth (Buckwalter et al., 1994).

**Figure 5.** Tremor recordings from transgenic and control mice. Traces of wt (*A*), and tg271R-783 wt transgenic (*B*) mice do not show any spastic motor disorder. The tremor in tg271Q-300 mice (*D*) shows a larger amplitude but a similar tremor frequency compared with homozygous *spa* mice (*E*). *C*, Trace taken from a tg271Q-300 animal during a nontremor period.

We also measured the onset of the inducible tremor in tg271Q-300 mice (Fig. 4*B*): Most animals started to display this at postnatal day 15, approximately the same time at which homozygous *spd^{ot}* mice start to show this motor deficiency. This implies that the mutant α_1 subunit interferes specifically with the endogenous adult α_1 isoform, which takes over glycinergic control from the neonatal α_2 isoform at approximately that time.

Finally, we recorded the tremor using an electromechanical transducer registering the vibrations, which can be sensed when picking up GlyR-deficient animals. We used an improved version of a setup described previously (Becker et al., 2000), which allows measurement of the frequency and amplitude of muscular contractions during tremor. Figure 5 shows oscilloscope traces derived from wt, tg271R-783, tg271Q-300, and homozygous *spa* mice. The amplitude of the contractions recorded during tremor episodes (Fig. 3*B*) appeared stronger in tg271Q-300 (Fig. 5*D*) than in *spa* (Fig. 5*E*) animals. As with partially GlyR-deficient homozygous *spa* animals but unlike completely GlyR-deficient homozygous *spd^{ot}* mice, tremor in tg271Q-300 mice was not permanent. During tremor-free periods, in which tg271Q-300 animals displayed the hind feet clenching phenotype (Fig. 3*C*), movements were recorded (Fig. 5*C*) that were similar to those seen in wt (Fig. 5*A*) or tg271R-783 (Fig. 5*B*) transgenic animals. Most interestingly, the tremor frequency in both tg271Q-300 and homozygous *spa/spa* mice was ~25–30 Hz, which is similar to the frequency measured in hyperekplexia or stiff-man syndrome (SMS) (Stayer and Meinck, 1998).

Although the 271Q transgene apparently caused a disease

phenotype specific for GlyR deficiencies, expression of the tg271R construct did not. In contrast, breeding this construct into the *spd^o* background could rescue the lethal phenotype of this complete loss-of-function mutation of the endogenous α_1 subunit (data not shown). This provided genetic proof that the human α_1 subunit was functional in interspecies hybrid receptors in mice. However, expression of the tg271R construct in addition to the endogenous murine α_1 subunit caused a phenotype distinct from the one caused by the hyperekplexia transgene tg271Q (Table 1): An initially subtle but progressive limb malcoordination appeared most noticeable in the hind legs of adult tg271R transgenic mice. Preliminary analysis suggests that neurodegeneration is involved here (data not shown).

It should be noted that the transgenes were introduced into a hybrid genetic background (C57BL/6 \times DBA/2). When comparing the phenotypes of transgenic animals within and between different litters of a particular transgenic strain, we did not notice an apparent contribution of genetic background variations in our animal population.

Glycine- and GABA_A-receptor transmission are impaired in the spinal cord of tg271Q-300 mice

To test whether the GlyR-dependent neuromotor inhibition in the spinal cord is impaired in tg271Q mice, whole-cell patch-clamp studies were performed in visually identified large-diameter neurons, presumptive α -motoneurons, in the ventral horn of spinal cord slices. Tg271Q-300 mice and nontransgenic littermate controls were 14–19 d of age (i.e., around the onset of the phenotype or slightly later). The tissue was stimulated electrically to elicit postsynaptic responses in the recorded motoneurons (Fig. 6*A*). The total PSC could be blocked completely by a combination of 1 mM kynurenic acid, 0.5 μ M strychnine, and 10 μ M bicuculline, indicating that the PSC was mediated only by glutamate, glycine, and GABA_A receptors in both genotypes (data not shown). The glycinergic component of the IPSC was isolated by a combination of 1 mM kynurenic acid and 10 μ M bicuculline. In accordance with the biochemical analysis described above, this component was strongly reduced by 69.8% in tg271Q-300 mice compared with wt mice ($n = 6$ for each; $p < 0.05$) (Fig. 6*B*, left). Interestingly, an even larger reduction was observed for the GABA_A-receptor-mediated component of the IPSC. This component was isolated in an additional series of experiments by adding 1 mM kynurenic acid and 0.5 μ M strychnine to the standard external solution. A reduction of 90.9% in tg271Q-300 animals was measured in comparison with wt animals ($n = 6$ for each; $p < 0.05$) (Fig. 6*B*, right). This modification of the GABA_A-receptor-mediated transmission by the expression of the mutant human GlyR α_1 subunit indicated that the entire inhibitory postsynaptic transmission is functionally downregulated by the expression of this transgene.

GABA_A receptor binding in the brain of tg271Q and tg271R mice

To investigate whether the number of GABA_A receptors was altered in the transgenic mice, we performed binding assays with ³H-RO15-4513, a radioligand that binds to the benzodiazepine site of most GABA_A receptor complexes. Brain sections of the mice with the two strongest mutant-transgene-expressing strains, tg271Q-300 and tg271Q-382, as well as those with the human wt-transgene-expressing strain tg271R-783, were analyzed in comparison with wt control animals (Fig. 7). No obvious difference could be observed in the pattern and the amount of GABA_A-receptor binding between the four tested genotypes at this level of

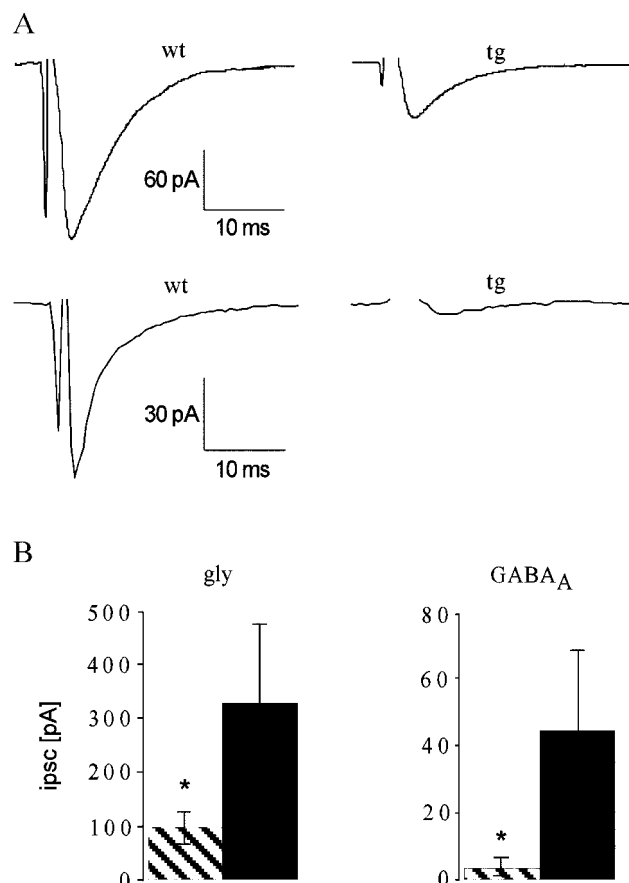


Figure 6. Electrically evoked IPSCs from spinal cord neurons are shown. *A*, Representative traces from individual measurements on spinal cord neurons of wt (left) and tg271Q-300 (right) mice. *Top*, Glycinergic component of the IPSC. *Bottom*, GABA_A receptor-mediated IPSC. *B*, Summary of the electrophysiological data. Mean amplitudes of the glycine-receptor-mediated (left) and GABA_A-receptor-mediated IPSCs for tg271Q-300 animals (striped columns) and wt controls (black columns) are shown. In tg271Q-300 animals, the glycinergic component was reduced from -331.2 ± 124.8 pA to -100.1 ± 23.8 pA. The GABA_A-receptor-mediated component was -4.1 ± 3.0 pA for tg271Q-300 mice, compared with -45.0 ± 25.4 pA in the controls. Asterisks indicate significance ($p < 0.05$).

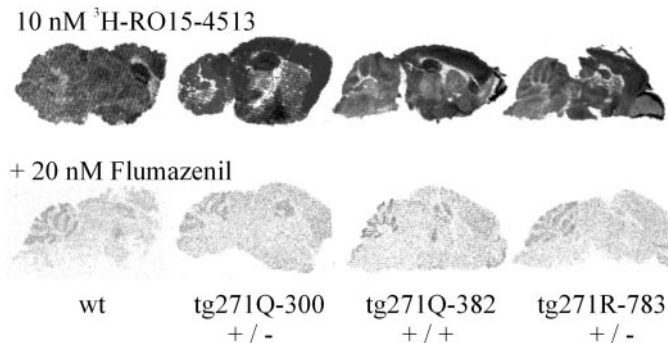


Figure 7. Autoradiographic studies of brains with benzodiazepine ligands. Distribution of ³H-RO15-4513 binding sites in the presence and absence of flumazenil in brain sections of wt, tg271Q-300, tg271Q-382, and tg271R-783 transgenic animals are shown.

resolution. Thus, these data are consistent with downregulation of GABA transmission on the functional rather than on the expression level, whereby analysis at a higher resolution to determine the intracellular distribution of the receptor remains to be done.

DISCUSSION

The transgenic mouse model described here closely reproduces several symptoms found in human patients with hyperekplexia, such as inducible tremor development and exaggerated startle response. Although in humans a causal genotype–phenotype relationship cannot be established, our data provide formal proof of the capacity of this human GlyR mutation to induce a dominant neuromotor phenotype.

The hyperekplexia phenotype evoked in these mice is dependent on mutant transgene expression. It resembles mouse mutants with partially or completely obliterated endogenous GlyR function. Mice that topically and ectopically express a wt human GlyR gene form ectopic ligand-binding receptors but do not show this phenotype. In contrast, the wt transgene can rescue the mouse GlyR α_1 null mutation *spd^{ot}*, demonstrating that functional interspecies GlyR complexes are formed *in vivo* and thereby supporting the validity of this animal model. Thus, the hyperekplexia-like phenotype is specific for the hyperekplexia-associated mutated GlyR transgene.

The strength of the phenotype differed between strains carrying the tg271Q transgene. The strongest phenotype observed in these lines was similar to (and in terms of tremor even stronger than) the one described for homozygous *spa* mice, because of residual ligand binding of ~10–20% in wt animals. The phenotype appears at approximately the same time as the GlyR α_1 isoform and becomes essential for glycinergic inhibition in mice. We conclude that the mutant α_1 subunit interferes specifically with the endogenous adult α_1 isoform in spinal cord, in which it competes with endogenous α_1 subunits for its essential partner β to form GlyR complexes.

Electrophysiological analyses on spinal cord motoneurons of tg271Q mice showed a strong reduction of the amplitude of the glycinergic component of the IPSC (69.8%). These data validate previous data derived *in vitro* and in tissue culture (Langosch et al., 1994; Rajendra et al., 1994) and provide a physiological explanation for the symptoms observed in mice as well as in humans. In addition and unexpectedly, the GABA_A-receptor-mediated transmission is also drastically reduced (90.9%) in the tg271Q-300 transgenic animals. This points to an adaptational interaction between the two inhibitory systems involved. Such interactions at the organism level are suggested by anatomical, clinical, and pharmacological evidence: (1) Both receptors often colocalize in rat spinal cord (Bohlhalter et al., 1994), and their transmitters are coreleased at many nerve endings (Jonas et al., 1998). (2) Both glycine and GABA_A receptors are clustered at the synapses and require the presence of the receptor-associated protein gephyrin for correct synaptic localization of the receptor complexes (Essrich et al., 1998; Feng et al., 1998; Kneussel et al., 1999). (3) Genetic GlyR disease in humans can be treated with benzodiazepines, although with variable success (Ryan et al., 1992). (4) The symptoms in SMS, an autoimmune disease associated with antibodies against glutamic acid decarboxylase isoform 65, causing a dysfunction of the GABAergic system, resemble the symptoms of genetic GlyR defects with respect to electromyographic data (Stayer and Meinck, 1998). The recently identified autoimmune reactivity against gephyrin in a patient with SMS (Butler et al., 2000) might represent an example of an acquired GlyR malfunction.

Starting to address the mechanism by which the glycinergic and the GABAergic systems interact in our model, we found, at our limits of resolution, no influence of overexpression of mutated or

unmutated GlyR α_1 subunit on the binding of a GABA_A-receptor ligand on brain tissue. This result is in line with previous observations on the mouse mutant *spa*, in which GABA_A receptor was not reduced but rather slightly enhanced, suggesting compensatory mechanisms at the receptor level (White and Heller, 1982). It should be noted that our ligand-binding data do not exclude possible changes in the subunit composition of GABA_A receptors or developmental changes in its subunit composition. They also do not exclude extrasynaptic localization of the GABA_A receptors. However, downregulation of GABA_A-receptor transmission by the lack of GlyR function could take place at the level of physiology, whereby postsynaptic and presynaptic mechanisms are conceivable. Because it is hardly possible to address these questions directly, evidence for presynaptic changes can be gained by an analysis of miniature IPSCs and by an ANOVA of triggered postsynaptic currents (Bekkers and Stevens, 1989; Malinow and Tsien, 1990). Preliminary data point to a reduction of presynaptic release in GABAergic synapses as well as to regulatory alterations on the postsynaptic side (our unpublished data). Possible mechanisms affecting both the glycinergic- and GABA_A-receptor-mediated transmission at the presynaptic level could involve factors important for the presynaptic transmitter release. An interesting candidate for a shared function important in both pathways could be the vesicular inhibitory amino acid transporter (Sagné et al., 1997), which is responsible for the uptake of glycine and GABA into synaptic vesicles (Burger et al., 1991; Dumoulin et al., 1999). It is conceivable that lack of GlyR function will affect the function of this transporter; this would also inhibit presynaptic GABA uptake.

Additional studies of this animal model are necessary to clarify these points. However, the data obtained thus far might have significant consequences on therapeutic strategies not only of the rare genetic GlyR defects, but also of the more frequent acquired neuromotor deficiency caused by the dysfunction of GABA_A receptors (SMS).

Considering that, as we have shown previously (Hartenstein et al., 1996; Becker et al., 2000), low expression of functional GlyR is sufficient for glycinergic inhibition, gene therapy for genetic GlyR defects should be possible, provided appropriate gene delivery technology is used. However, because of adverse effects of overexpression or ectopic expression of a “healthy” gene, as seen in the tg271R animals, such approaches require precise expression control. These tg271R animals might finally be useful to investigate the recently raised issue of a potential role of glycinergic transmission in neurodegeneration (Chen et al., 1999).

REFERENCES

- Andrew M, Owen MJ (1997) Hyperekplexia: abnormal startle response due to glycine receptor mutations. *Br J Psychiatry* 170:106–108.
- Becker CM, Hermans-Borgmeyer I, Schmitt B, Betz H (1986) The glycine receptor deficiency of the mutant mouse spastic: evidence for normal glycine receptor structure and localization. *J Neurosci* 6:1358–1364.
- Becker CM, Schmieden V, Tarroni P, Strasser U, Betz H (1992) Isoform-selective deficit of glycine receptors in the mouse mutant spastic. *Neuron* 8:283–289.
- Becker L, Hartenstein B, Schenkel J, Kuhse J, Betz H, Weiher H (2000) Transient neuromotor phenotype in transgenic spastic mice expressing low levels of glycine receptor β -subunit: an animal model of startle disease. *Eur J Neurosci* 12:27–32.
- Bekkers JM, Stevens CF (1989) NMDA and non-NMDA receptors are co-localized at individual excitatory synapses in cultured rat hippocampus. *Nature* 341:230–233.
- Betz H (1992) Structure and function of inhibitory glycine receptors. *Q Rev Biophys* 25:381–394.
- Bohlhalter S, Mohler H, Fritschy JM (1994) Inhibitory neurotransmission in rat spinal cord: co-localization of glycine- and GABA_A-

- receptors at GABAergic synaptic contacts demonstrated by triple immunofluorescence staining. *Brain Res* 642:59–69.
- Buckwalter MS, Cook SA, Davisson MT, White WF, Camper SA (1994) A frameshift mutation in the mouse α_1 glycine receptor gene (*Glr α_1*) results in progressive neurological symptoms and juvenile death. *Hum Mol Genet* 3:2025–2030.
- Burger PM, Hell J, Mehl E, Krasel C, Lottspeich F, Jahn R (1991) GABA and glycine in synaptic vesicles: storage and transport characteristics. *Neuron* 7:287–293.
- Butler MH, Hayashi A, Ohkoshi N, Villmann C, Becker CM, Feng G, De Camilli P, Solimena M (2000) Autoimmunity to gephyrin in stiff-man syndrome. *Neuron* 26:307–312.
- Chen Q, Moulder K, Tenkova T, Hardy K, Olney JW, Romano C (1999) Excitotoxic cell death dependent on inhibitory receptor activation. *Exp Neurol* 160:215–225.
- Dotz HU, Zieglgansberger W (1994) Infrared videomicroscopy: a new look at neuronal structure and function. *Trends Neurosci* 17:453–458.
- Dumoulin A, Rostaing P, Bedet C, Lévi S, Isambert M-F, Henry J-P, Triller A, Gasnier B (1999) Presence of the vesicular inhibitory amino acid transporter in GABAergic and glycinergic synaptical terminal boutons. *J Cell Sci* 112:811–823.
- Essrich C, Lorez M, Benson JA, Fritschy JM, Luscher B (1998) Postsynaptic clustering of major GABA_A receptor subtypes requires the γ_2 subunit and gephyrin. *Nat Neurosci* 1:563–571.
- Feng G, Tintrup H, Kirsch J, Nichol MC, Kuhse J, Betz H, Sanes JR (1998) Dual requirement for gephyrin in glycine receptor clustering and molybdoenzyme activity. *Science* 282:1321–1324.
- Floeter MK, Andermann F, Andermann E, Nigro M, Hallett M (1996) Physiological studies of spinal inhibitory pathways in patients with hereditary hyperekplexia. *Neurology* 46:766–772.
- Grenningloh G, Pribilla I, Prior P, Multhaup G, Beyreuther K, Taleb O, Betz H (1990a) Cloning and expression of the 58 kd β subunit of the inhibitory glycine receptor. *Neuron* 4:963–970.
- Grenningloh G, Schmieden V, Schofield PR, Seeburg PH, Siddique T, Mohandas TK, Becker CM, Betz H (1990b) Alpha subunit variants of the human glycine receptor: primary structures, functional expression and chromosomal localization of the corresponding genes. *EMBO J* 9:771–776.
- Hartenstein B, Schenkel J, Kuhse J, Besenbeck B, Kling C, Becker CM, Betz H, Weiher H (1996) Low level expression of glycine receptor β subunit transgene is sufficient for phenotype correction in spastic mice. *EMBO J* 15:1275–1282.
- Jonas P, Bischofberger J, Sandkuhler J (1998) Corelease of two fast neurotransmitters at a central synapse. *Science* 281:419–424.
- Kingsmore SF, Giros B, Suh D, Bieniarz M, Caron MG, Seldin MF (1994) Glycine receptor β -subunit gene mutation in spastic mouse associated with LINE-1 element insertion. *Nat Genet* 7:136–141.
- Kneussel M, Brandstatter JH, Laube B, Stahl S, Muller U, Betz H (1999) Loss of postsynaptic GABA_A receptor clustering in gephyrin-deficient mice. *J Neurosci* 19:9289–9297.
- Langosch D, Laube B, Rundstöm N, Schmieden V, Bormann J, Betz H (1994) Decreased agonist affinity and chloride conductance of mutant glycine receptors associated with human hereditary hyperekplexia. *EMBO J* 13:4223–4228.
- Laube B, Langosch D, Betz H, Schmieden V (1995) Hyperekplexia mutations of the glycine receptor unmask the inhibitory subsite for β -amino-acids. *NeuroReport* 6:897–900.
- Malinow R, Tsien RW (1990) Presynaptic enhancement shown by whole-cell recordings of long-term potentiation in hippocampal slices. *Nature* 346:177–180.
- Malosio ML, Marqueze-Pouey B, Kuhse J, Betz H (1991) Widespread expression of glycine receptor subunit mRNAs in the adult and developing rat brain. *EMBO J* 10:2401–2409.
- Matsumoto J, Fuhr P, Nigro M, Hallett M (1992) Physiological abnormalities in hereditary hyperekplexia. *Ann Neurol* 32:41–50.
- Meyer G, Kirsch J, Betz H, Langosch D (1995) Identification of a gephyrin binding motif on the glycine receptor β subunit. *Neuron* 15:563–572.
- Moechars D, Lorent K, De Strooper B, Dewachter I, Van Leuven F (1996) Expression in brain of amyloid precursor protein mutated in the α -secretase site causes disturbed behavior, neuronal degeneration and premature death in transgenic mice. *EMBO J* 15:1265–1274.
- Mulhardt C, Fischer M, Gass P, Simon-Chazottes D, Guenet JL, Kuhse J, Betz H, Becker CM (1994) The spastic mouse: aberrant splicing of glycine receptor β subunit mRNA caused by intronic insertion of L1 element. *Neuron* 13:1003–1015.
- Rajendra S, Lynch JW, Pierce KD, French CR, Barry PH, Schofield PR (1994) Startle disease mutations reduce the agonist sensitivity of the human inhibitory glycine receptor. *J Biol Chem* 269:18739–18742.
- Ryan SG, Sherman SL, Terry JC, Sparkes RS, Torres MC, Mackey RW (1992) Startle disease, or hyperekplexia: response to clonazepam and assignment of the gene (STHE) to chromosome 5q by linkage analysis. *Ann Neurol* 31:663–668.
- Ryan SG, Buckwalter MS, Lynch JW, Handford CA, Segura L, Shiang R, Wasmuth JJ, Camper SA, Schofield P, O'Connell P (1994) A missense mutation in the gene encoding the α_1 subunit of the inhibitory glycine receptor in the spasmodic mouse. *Nat Genet* 7:131–135.
- Sagné C, El Mestikawy S, Isambert M-F, Hamon M, Henry J-P, Giros B, Gasnier B (1997) Cloning of a functional vesicular GABA and glycine transporter by screening of genome databases. *FEBS Lett* 417:177–183.
- Saul B, Schmieden V, Kling C, Mulhardt C, Gass P, Kuhse J, Becker CM (1994) Point mutation of glycine receptor α_1 subunit in the spasmodic mouse affects agonist responses. *FEBS Lett* 350:71–76.
- Shiang R, Ryan SG, Zhu YZ, Hahn AF, O'Connell P, Wasmuth JJ (1993) Mutations in the α_1 subunit of the inhibitory glycine receptor cause the dominant neurologic disorder, hyperekplexia. *Nat Genet* 5:351–358.
- Stayer C, Meinck HM (1998) Stiff-man syndrome: an overview. *Neurologia* 13:83–88.
- Suhren O, Bruyn GW, Tuynman JA (1966) Hyperekplexia: a hereditary syndrome. *J Neurol Sci* 3:577–605.
- White WF, Heller AH (1982) Glycine receptor alteration in the mutant mouse spastic. *Nature* 298:655–657.