

# The *Rpe65* Leu450Met Variation Increases Retinal Resistance Against Light-Induced Degeneration by Slowing Rhodopsin Regeneration

Andreas Wenzel,<sup>1</sup> Charlotte E. Remé,<sup>1</sup> Theodore P. Williams,<sup>2</sup> Farhad Hafezi,<sup>1</sup> and Christian Grimm<sup>1</sup>

<sup>1</sup>Laboratory of Retinal Cell Biology, Department of Ophthalmology, University Hospital Zürich, CH-8091 Zürich, Switzerland, and <sup>2</sup>Biological Sciences, 212-Biomedical Research Facility, Florida State University, Tallahassee, Florida 32306

Excessive light can cause retinal degeneration and may be an environmental cofactor accelerating retinal dystrophies and age-related diseases. In rodent models, the light damage susceptibility (LDS) of the retina is determined genetically. In two mouse strains, with different degrees of LDS, a Leu450Met variation in the pigment epithelial protein RPE65 was shown recently to cosegregate with low LDS. Because light damage is rhodopsin-mediated, and RPE65 is essential for the regeneration of rhodopsin in the visual cycle, we analyzed this variation regarding rhodopsin metabolism and LDS in four mouse strains. We found that, in contrast to previous assertions, LDS does not correlate with the maximal retinal content of rhodopsin present after dark adaptation. Instead, LDS correlated positively with the kinetics of rhodopsin regeneration, which determine rhodopsin availability during light exposure. Light damage

occurred after absorption of a threshold dose of photons and thus fast regeneration, as observed in those two strains having Leu at position 450 of RPE65, was correlated with the occurrence of photoreceptor apoptosis after short exposure. In contrast, mice with the Leu450Met variation of *Rpe65* regenerated rhodopsin with slow kinetics and showed an increased resistance to light-induced retinal degeneration. In these mice, RPE65 protein levels were reduced by a post-transcriptional mechanism. F<sub>1</sub> hybrid mice, carrying one normal and one variant *Rpe65* gene, had intermediate levels of the corresponding protein and showed intermediate rhodopsin regeneration kinetics and an intermediate LDS. Thus, none of the two variants of *Rpe65* had a dominant effect.

**Key words:** retinal degeneration; light damage; photoreceptor; pigment epithelium; rhodopsin; RPE65

Retinal degeneration induced by exposure to excessive doses of light is a model to study photoreceptor apoptosis, the common final pathway of cell loss in human age-related macular degeneration and some forms of inherited retinal dystrophies (Remé et al., 1998a). In patients with these retinal diseases, permanent exposure to high levels of light may also be an environmental factor accelerating loss of vision (Taylor et al., 1990; Cruickshanks et al., 1993; Simons, 1993; Cideciyan et al., 1998; Mata et al., 2000). This view is supported by the observation that several animal models for human retinal degeneration show a higher light damage susceptibility (LDS) than do controls (Sanyal and Hawkins, 1986; Wang et al., 1997; C. K. Chen et al., 1999; J. Chen et al., 1999; LaVail et al., 1999; Organisciak et al., 1999).

Light damage to photoreceptors is triggered by the excess absorption of photons by the visual pigment rhodopsin (Grimm et al., 2000). Once bleached, rhodopsin is regenerated metabolically in a multistep process called the visual cycle, involving photoreceptors and the adjacent retinal pigment epithelium (RPE)

(Saari, 2000). One essential protein for this cycle is RPE65, which is specifically expressed in the RPE (Redmond et al., 1998). In mice, the sensitivity for retinal damage induced by light depends on the genetic background (LaVail et al., 1987). The hereditary factors determining LDS, however, are largely unknown. Recently, a sequence variation in *Rpe65*, causing a Leu450Met amino acid substitution, was shown to cosegregate with an increased resistance against acute light damage and reduced photoreceptor loss with age in C57BL/6J mice (Danciger et al., 2000). Furthermore, mice lacking RPE65 are completely resistant to light damage (Grimm et al., 2000). How the genetic variation in *Rpe65* confers a low LDS and a reduced age-related dropout of visual cells is unknown at present.

Here, we analyzed four strains of mice for the *Rpe65* Leu450Met variation and correlated its presence or absence with the amount of RPE65 protein, the kinetics of rhodopsin regeneration, and finally the LDS of these strains. Based on these correlations, we delineate mechanistically how the genetic variation phenotypically alters the resistance of photoreceptors against light-induced apoptosis and suggest how age-related loss of photoreceptors may be modulated genetically.

Received Oct. 2, 2000; revised Oct. 2, 2000; accepted Oct. 20, 2000.

This work was supported by the Swiss National Science Foundation (Zürich, Switzerland) and the E&B Grimmke Foundation (Düsseldorf, Germany) (C.G., F.H., C.R., and A.W.). T.P.W. was an Alexander von Humboldt Fellow. We thank G. Hoegger, C. Imsand, and D. Greuter for skilled technical assistance and Drs. B. N. Wiggert, H. E. Hamm, J. W. Crabb, K. Palczewski, T. M. Redmond, T. vanVeen, and U. Wolfrum for providing antisera. We also thank Fabio Valeri from Hypothesis Scientific Data Evaluation (Zürich, Switzerland) for the statistical analysis.

Correspondence should be addressed to A. Wenzel, University Hospital Zürich, Frauenklinikstrasse 24, CH-8091 Zurich, Switzerland. E-mail: awenzel@ophth.unizh.ch.

Copyright © 2001 Society for Neuroscience 0270-6474/01/210053-06\$15.00/0

## MATERIALS AND METHODS

**Mice.** All procedures concerning animals were in accord with the regulations of the Veterinary Authority of Zurich and with the statement of The Association for Research in Vision and Ophthalmology for the use of animals in research. We obtained 21-d-old mice from the following suppliers: BALB/c (Wiga, Sulzfeld, Germany), C57BL/6J (RCC, Itigen, Switzerland), and 129/Ola (Dr. I. Tobler, Institute of Pharmacology, University of Zurich, Switzerland). Pigmented B6;129S(N2) and albi-

**Table 1. Rhodopsin regeneration after bleaching**

	BALB/c	129/Ola	B6;129S(N2)	C57BL/6J	B6CF <sub>1</sub>
R <sub>0</sub> <sup>a</sup>	0.43 ± 0.04, 3 <sup>b</sup>	0.45 ± 0.04, 4	0.48 ± 0.08, 10	0.52 ± 0.04, 2	0.53 ± 0.05, 7
0 min after bleaching	0.04 ± 0.00, 2	0.03 ± 0.01, 3	0.04 ± 0.01, 4	0.03 ± 0.01, 2	0.06 ± 0.02, 3
5 min after bleaching	0.11 ± 0.02, 2	0.08 ± 0.01, 2	0.05, 1	0.08 ± 0.03, 2	0.07 ± 0.02, 3
15 min after bleaching	0.22 ± 0.07, 2	0.18 ± 0.02, 3	0.07 ± 0.04, 3	0.12 ± 0.00, 2	0.13 ± 0.03, 3
30 min after bleaching	0.32 ± 0.01, 2	0.22 ± 0.03, 2	0.13, 1	0.11 ± 0.01, 2	0.22 ± 0.01, 3
45 min after bleaching	0.35, 1	0.34 ± 0.05, 3	0.19 ± 0.02, 2	0.20 ± 0.01, 2	0.29 ± 0.01, 4
60 min after bleaching	0.42 ± 0.05, 2	0.48 ± 0.00, 2	0.26 ± 0.09, 7	0.18 ± 0.01, 2	0.34 ± 0.05, 3
120 min after bleaching	0.44 ± 0.05, 2	0.52 ± 0.05, 2	0.31 ± 0.07, 5	0.36 ± 0.06, 2	0.49 ± 0.04, 5
180 min after bleaching	n.d. <sup>c</sup>	n.d.	0.47 ± 0.12, 2	0.43 ± 0.02, 2	n.d.
240 min after bleaching	n.d.	n.d.	0.47 ± 0.06, 6	0.51 ± 0.01, 2	n.d.

All values for rhodopsin are in nanomoles per retina.

<sup>a</sup>Rhodopsin content per retina after 16 hr of dark adaptation.

<sup>b</sup>Numbers in italics represent numbers of mice.

<sup>c</sup>n.d., not determined.

notic littermates (B6;129S(N2)-a) were offspring from mice purchased from The Jackson Laboratory (Bar Harbor, ME). B6;129S(N2)-a mice were seldom born and were used only for morphological studies. C57BL/6 × BALB/c F<sub>1</sub> (B6CF<sub>1</sub>) mice were obtained from Biological Research Laboratories (Basel, Switzerland). All animals were reared in 12 hr (6:00 A.M.–6:00 P.M.) light/dark cycles with 60–100 lux within the cages. Experiments were performed at the age of 5–12 weeks.

**Induction and analysis of light damage.** Light damage was induced in dark-adapted mice with dilated pupils by exposure to 5 klux of diffuse white fluorescent light for 10, 20, 30, 40, and 50 min and 1, 2, 4, 6, 8, and 10 hr (lights on at 10:00 A.M.) (Wenzel et al., 2000). Animals were then kept in darkness for 24 hr, their retinas were examined histologically, and the minimal time required to induce photoreceptor apoptosis was determined.

**Rhodopsin content and regeneration.** The rhodopsin content was determined as described recently (Kueng-Hitz et al., 2000). R<sub>0</sub> was measured after 16 hr of dark adaptation. The existence of a negative correlation between light damage susceptibility and R<sub>0</sub> was tested in the four strains homozygous for the individual *Rpe65* variant using an ordered logit model (Powers and Xie, 2000). The continuous variable was R<sub>0</sub> and the ordinal response variables were the time intervals to induce light damage. The analysis was performed using “R” software version 1.1 (<http://www.r-project.org>) on Windows NT 4 (Ihaka and Gentleman, 1996). *P* values of <0.05 were considered significant.

To assess the rhodopsin regeneration kinetics, dark-adapted mice, with dilated pupils, were exposed to white light (10 min, 5 klux). Rhodopsin was measured at various times in darkness (Table 1). Its regeneration rate constants were calculated. These constants, multiplied by the rhodopsin at steady state, give the number of photons absorbed per minute during exposure. The existence of a steady state was verified in B6;129S(N2) mice by showing that rhodopsin levels during 10–60 min of light exposure did not change (data not shown).

**Western blotting.** Eyecups (including the retina) from dark-adapted mice were homogenized in 100 mM Tris/HCl, pH 7.4, and analyzed for protein content. Standard SDS-PAGE (7.5 or 10%) and Western blotting were performed. For immunodetection, polyclonal rabbit antisera directed against RPE65 (raised against amino acids 150–164 of human/bovine RPE65) (Redmond and Hamel, 2000), interphotoreceptor retinoid binding protein (IRBP) (Smith et al., 1997), cellular retinaldehyde-binding protein (CRALBP) (Crabb et al., 1991), transducin (Hamm et al., 1987), rhodopsin-kinase (Zhao et al., 1998), arrestin (Kueng-Hitz et al., 2000), and actin (Lessard, 1988) were applied. HRP-conjugated secondary antibodies were applied (catalog #sc 2004 and 2031; Santa Cruz Biotechnology, Santa Cruz, CA), and immunoreactivity was visualized using the Renaissance–Western blot detection kit (PerkinElmer Life Sciences, Emeryville, CA).

**RT-PCR and *Rpe65* sequence analysis.** Total RNA was prepared from eyecups using the RNeasy kit (Qiagen, Hilden, Germany). Remaining genomic DNA was digested with deoxyribonuclease RQ (Promega, Madison, WI), and 600 ng of total RNA was reverse-transcribed with oligo(dT) and M-MLV (Promega). A 367-bp fragment of the *Rpe65* cDNA was amplified using exon 4 forward primer and exon 6 reverse primer (Redmond et al., 1998). The amplified fragment was cut with *Mbo*I and

the 222-bp and the 20-bp fragments were ligated (T4 DNA ligase; Roche, Basel, Switzerland). The resulting 242-bp product was amplified using the above primers, gel-purified, and used as mimic DNA. Levels of *β-actin* mRNA in 10 ng of total RNA were determined by exponential RT-PCR (primers: 5'-CAA CGG CTC CGG CAT GTGC-3'; 5'-CTC TTG CTC TGG GCC TCG-3'; annealing: 62°C; cycles: 24) and amounts of cDNA for *Rpe65* mimic PCR were adjusted accordingly. Semiquantitative determination of *Rpe65* mRNA levels was done by mimic PCR using the above primers with end-labeled <sup>32</sup>P reverse primer; cDNA representing ~20 ng of total RNA and increasing amounts of mimic DNA. For amplification (30 cycles), the annealing temperature was 56°C. Products were separated by native PAGE (6%), stained with ethidium bromide, and quantified on a PhosphorImager (Molecular Dynamics, Amersham Pharmacia Biotech Europe, Freiburg, Germany).

To determine the sequence of *Rpe65* by PCR, tail DNA was isolated and amplified using the following primer pair: up, 5'-CTG ACA AGC TCT GTA AG-3'; down, 5'-CAT TAC CAT CAT CTT CTT CCA-3'. Amplification was done during 35 cycles with a 30 sec denaturing step at 94°C, a 1 min annealing step at 52°C, and a 1 min extension step at 72°C. The amplified PCR product from C57BL/6 mice had a length of 126-bp and contained one *Alu*I site. Restriction digestion with *Alu*I resulted in two fragments of 118 and 8 bp, respectively. The BALB/c sequence contains one additional *Alu*I site resulting in three products of 109, 9, and 8 bp, after digestion. Undigested and digested PCR products were analyzed on an 8% polyacrylamide gel.

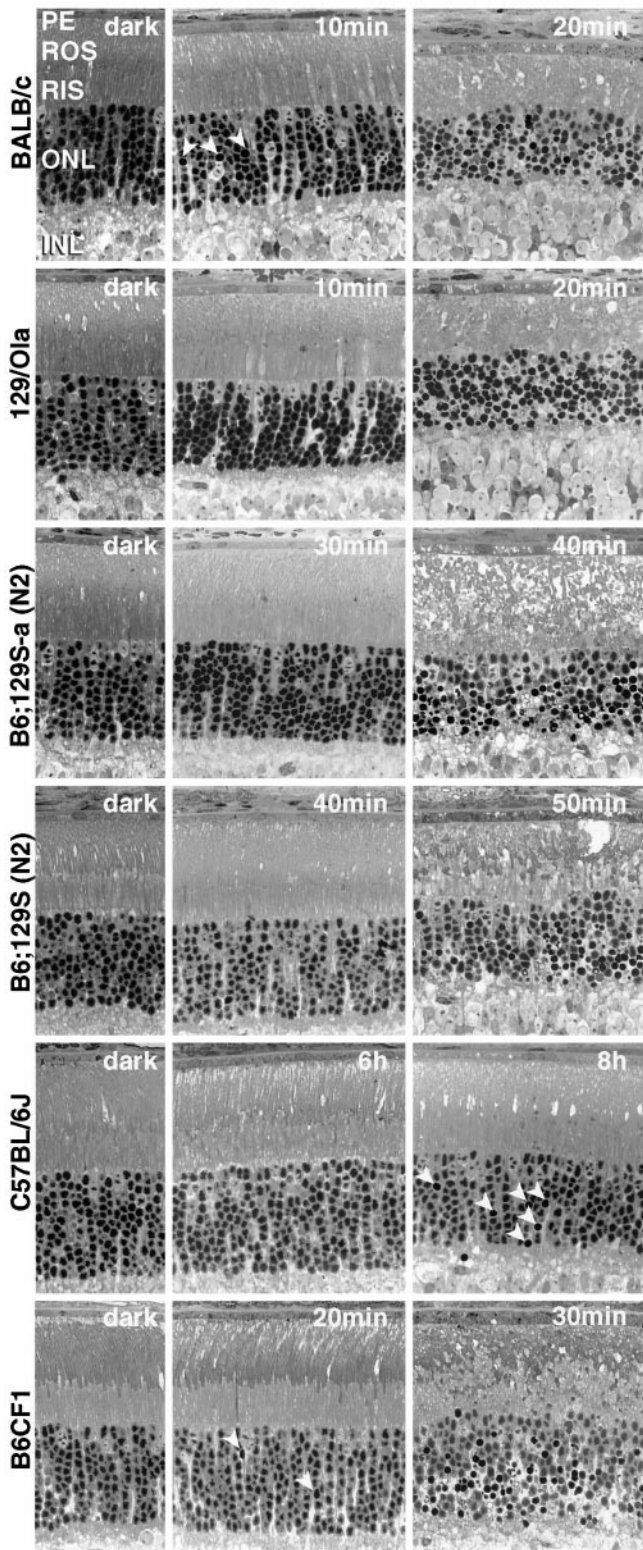
In some cases, results from genotyping were verified as follows: total RNA was reverse-transcribed, and *Rpe65* mRNA was amplified using the following primer pair: up, 5'-TTA CGT GAG AAT TGG GAA GAA GTT-3'; down, 5'-AGA AGG GCA GTC AGT GTG GTA CTG-3' (Danciger et al., 2000). PCR products were purified (QIAquick; Qiagen) and sequenced (Microsynth, Balgach, Switzerland).

## RESULTS

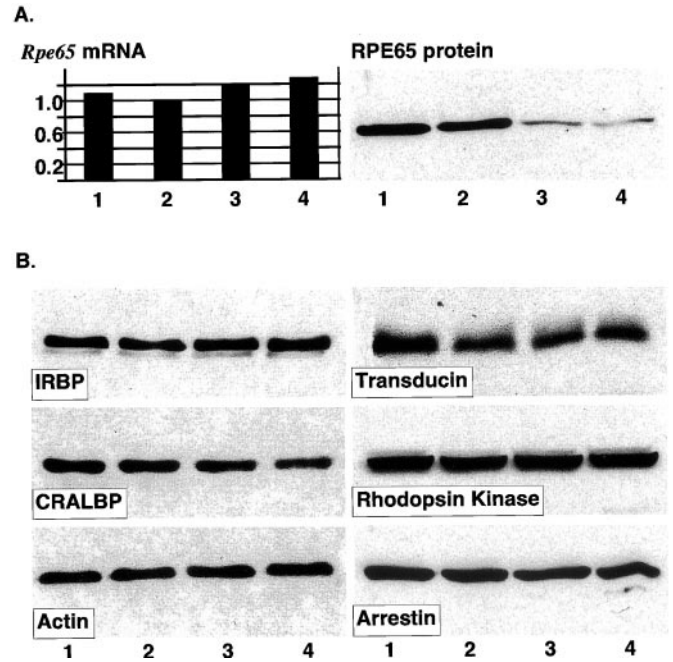
### Light exposure duration required to induce light damage depends on the genetic background

To judge LDS, the minimal time of light exposure that induced condensation of nuclear chromatin and of rod inner segments in the majority of photoreceptors of the lower central retina was determined. In BALB/c and 129/Ola mice, these distinct morphological signs of apoptosis were observed after 20 min of light exposure (Fig. 1). After 10 min of exposure, such damage was absent in 129/Ola mice and rare in BALB/c mice, indicating that the threshold for apoptosis was reached between 10 and 20 min of light exposure in both strains (apparently closer to 10 min in BALB/c mice). The slightly increased LDS of BALB/c mice compared with 129/Ola mice may have resulted from slightly elevated RPE65 levels (Fig. 2A), minimally faster rhodopsin regeneration (Table 2), and/or the expression of slightly more transducin (Fig. 2B) protein, which may increase signal gain





**Figure 1.** Light damage susceptibilities in different mouse strains. Light micrographs of control mice (dark, left column) or mice exposed to light (5 klux) for the times indicated. Different exposure times were required to induce photoreceptor apoptosis (right column). Transition from reversible damage (middle column), characterized by vesiculation of ROS, to irreversible (apoptotic) damage occurred in the interval between the times indicated. Arrowheads indicate initial apoptotic lesions involving only few photoreceptor nuclei in the outer nuclear layer (ONL). INL, Inner nuclear layer; PE, pigment epithelium. Four to six eyes were examined for each condition 24 hr after light exposure.



**Figure 2.** *A*, Post-transcriptional control of RPE65 protein levels. Comparison of *Rpe65* mRNA levels (arbitrary units) revealed only minor differences between the four mouse strains. In contrast, significantly more RPE65 protein was found in eyecups of BALB/c (lane 1) and 129/Ola (lane 2) mice as compared with B6;129S(N2) (lane 3) and C57BL/6J (lane 4) mice, suggesting a post-transcriptional control of RPE65 protein levels (25  $\mu$ g of protein was loaded). These results are representative of three independent experiments. *B*, Proteins of visual cycle and signal transduction. Eyecup homogenates of BALB/c (lane 1), 129/Ola (lane 2), B6;129S(N2) (lane 3), and C57BL/6J mice (lane 4) were analyzed for immunoreactivity of proteins of the visual cycle: IRBP, CRALBP, or the visual transduction cascade (transducin, rhodopsin kinase, arrestin). Actin immunoreactivity served as control for equal load. Protein load was 12.5  $\mu$ g for IRBP, arrestin, actin, and CRALBP; 25  $\mu$ g for transducin; and 50  $\mu$ g for rhodopsin kinase. These results are representative of three independent experiments.

(Fung et al., 1981) during exposure. In B6;129S(N2) mice, the threshold for apoptosis was passed between 40 and 50 min of light exposure (Fig. 1); in C57BL/6J mice, no apoptosis was detected after 6 h of exposure. In the latter mice, apoptosis was restricted to a few scattered nuclei (Fig. 1) even after 8–10 hr of exposure. Terminal deoxynucleotidyl transferase-mediated biotinylated UTP nick end labeling-positive nuclei and internucleosomal DNA fragmentation 24 hr after light exposure confirmed the apoptotic nature of cell death in photoreceptors (data not shown). Thus, different degrees of LDS were found: BALB/c  $\geq$  129/Ola  $\gg$  B6;129S(N2)  $\gg$  C57BL/6J.

B6CF<sub>1</sub> (C57BL/6  $\times$  BALB/c F<sub>1</sub>) mice showed distinct signs of photoreceptor apoptosis after 30 min of light exposure. Twenty minutes of exposure induced apoptosis in very few scattered photoreceptors of the most affected area (Fig. 1). Thus, the threshold for distinct light damage was passed close to 30 min.

Albinotic B6;129S(N2) mice, showing light damage after exposure for 30–40 min, were only slightly more vulnerable to light damage than pigmented littermates and distinctly less vulnerable than albinotic BALB/c and 129/Ola mice.

#### Correlation of rhodopsin regeneration kinetics with LDS

Light-induced apoptosis of rods is triggered by the excessive absorption of photons by rhodopsin (Grimm et al., 2000). Use of

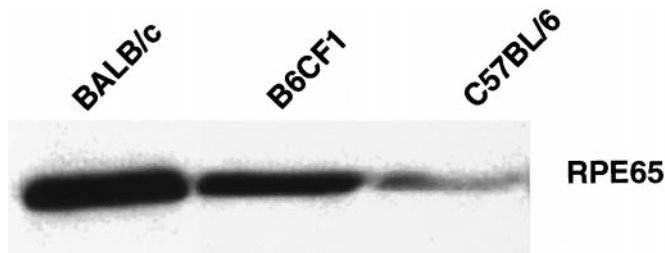
**Table 2. RPE65, rhodopsin regeneration, photon catch, and light damage**

	BALB/c	129/Ola	B6;129S(N2)	C57BL/6J	B6CF <sub>1</sub>
<i>Rpe65</i> sequence at codon 450	CTG = Leu	CTG = Leu	ATG = Met	ATG = Met	CTG + ATG
<i>Rpe65</i> mRNA <sup>a</sup>	1.1	1.0	1.2	1.3	n.d.
RPE65 protein <sup>b</sup>	++++	++++	+	+	++(+)
R <sub>0</sub> (nmol/retina)	0.43	0.45	0.48	0.52	0.53
Regeneration rate constant <sup>c</sup>	0.036/min	0.028/min	0.008/min	0.009/min	0.017/min
Photons/retina/min <sup>c</sup>	8.4 × 10 <sup>12</sup>	7.1 × 10 <sup>12</sup>	2.2 × 10 <sup>12</sup>	2.5 × 10 <sup>12</sup>	4.8 × 10 <sup>12</sup>
Damage occurs after	10–20 min	20 min	50 min	8 hr	30 min
Photons absorbed until damage	8–17 × 10 <sup>13</sup>	14 × 10 <sup>13</sup>	11 × 10 <sup>13</sup>	120 × 10 <sup>13</sup>	14 × 10 <sup>13</sup>

<sup>a</sup>Values are arbitrary units.

<sup>b</sup>Judged by visual impression (see Fig. 2).

<sup>c</sup>Values calculated from rhodopsin values in Table 1.



**Figure 3.** RPE65 immunoreactivity in eyecup homogenates from age-matched pure BALB/c, B6CF<sub>1</sub>, and pure C57BL/6 mice. F<sub>1</sub> mice, heterozygous for normal and variant *Rpe65*, show intermediate levels of the RPE65 protein, suggesting that a single copy of normal *Rpe65* is insufficient to restore normal levels of the protein. A total of 25 μg of protein was loaded. Results are representative of three independent experiments.

different mouse strains allowed us to separately analyze the effect of the maximal rhodopsin content after dark adaptation (R<sub>0</sub>) and the rate of rhodopsin regeneration on LDS. The highest R<sub>0</sub> values were found in the most resistant strain (C57BL/6J) followed by B6;129S(N2), 129/Ola, and BALB/c (Table 1). This ranking reversed the order found for LDS (see above). Thus, in mice homozygous for one or the other variation of *Rpe65*, R<sub>0</sub> was negatively correlated with LDS ( $p < 0.041$ ). Compared with these strains, B6CF<sub>1</sub> hybrid mice, carrying one copy of each of the variants, had higher R<sub>0</sub> values. In this particular case, the negative correlation was invalid, because these animals were more sensitive than C57BL/6J or B6;129S(N2) mice, which showed lower R<sub>0</sub> values.

Because rhodopsin regeneration during light exposure provides the chromophore to absorb light, fast rhodopsin regeneration might be predictive of a high LDS. Indeed, the rhodopsin regeneration rate constants correlated directly with the LDS rank for all mice, including B6CF<sub>1</sub> mice (Table 2).

#### Leu450Met variation in *Rpe65* is associated with reduced protein levels and slowed rhodopsin regeneration

Analysis of the *Rpe65* sequences showed that not only BALB/c (Danciger et al., 2000), but also 129/Ola mice were homozygous for the normal *Rpe65* sequence in exon 13 at codon 450 (CTG = Leu). In contrast, B6;129S(N2) and C57BL/6J mice were homozygous for the variant *Rpe65* gene (ATG = Met). Although this variation apparently did not affect the expression of *Rpe65* mRNA (Fig. 2A), it reduced the steady-state levels of the RPE65 protein in B6;129S(N2) and C57BL/6J mice (Fig. 2A), suggesting

a post-transcriptional regulation of RPE65 *in vivo*. With regard to their RPE65 levels, the strains were ranked as follows: BALB/c ≥ 129/Ola >>> B6;129S(N2) = C57BL/6J (judged by visual impression; summarized in Table 2). The different regeneration rates for rhodopsin (Table 2) appear to reflect these differences in the amount of RPE65; other ancillary proteins of the visual cycle, such as CRALBP and IRBP, did not show major differences among the four strains (Fig. 2B). Furthermore, no differences in the amount of arrestin, which might affect the kinetics of the visual cycle (Palczewski et al., 1999), were found (Fig. 2B).

#### Mice heterozygous for the L450M variation in *Rpe65* are intermediates regarding amount of RPE65, rhodopsin regeneration kinetics, and LDS

B6CF<sub>1</sub> mice, carrying one normal copy and one variant copy of *Rpe65*, expressed intermediate amounts of RPE65 (Fig. 3) when compared with pure BALB/c and C57BL/6 mice. Likewise, the rate of rhodopsin regeneration in those F<sub>1</sub> mice (0.017/min) was slower than in BALB/c mice (0.036/min) but faster than in C57BL/6 mice (0.009/min). Consequently, the photon catch capacity of F<sub>1</sub> mice was intermediate compared with that of animals from their parental strains (Table 2), and their LDS was decreased compared with BALB/c mice but increased compared with C57BL/6J mice. Thus, phenotypically, none of the two copies of *Rpe65* displayed a dominant effect.

#### Light damage occurs after absorption of threshold amount of photons

From the number of photons absorbed per retina per minute in different strains (Table 2), we calculated the number of photons absorbed during the minimal time of exposure needed to induce light damage: BALB/c = 16.8 × 10<sup>13</sup>, 129/Ola = 14.2 × 10<sup>13</sup>, B6;129S(N2) = 11 × 10<sup>13</sup>, B6CF<sub>1</sub> = 14.4 × 10<sup>13</sup>, and C57BL/6J = 120 × 10<sup>13</sup>.

The number calculated for BALB/c mice may be overestimated because it is based on a minimal time of 20 min. However, slight damage was already observed after 10 min of exposure, during which 8.4 × 10<sup>13</sup> photons would have been absorbed (see above). Thus, the threshold dose of photons to be absorbed to induce irreversible retinal light damage was 8–14 × 10<sup>13</sup> photons, except for C57BL/6J mice (see Discussion).

#### DISCUSSION

Genetic factors reducing LDS in C57BL/6J mice have been postulated already in 1987 (LaVail et al., 1987), but the underlying molecular mechanisms have not yet been identified. Recently, by comparing BALB/c with C57BL/6J mice, a sequence variation in



the *Rpe65* gene was shown to cosegregate with low LDS in C57BL/6J mice (Danciger et al., 2000). Here we show that this *Rpe65* Leu450Met variation leads to reduced levels of the corresponding protein, a decreased capacity of the pigment epithelium to regenerate rhodopsin, a decreased number of photons (pro-apoptotic stimulus) that can be absorbed by a retina per time, and finally a decreased LDS. The presence of one normal and one variant allele of *Rpe65* in B6CF<sub>1</sub> heterozygous mice resulted in intermediate levels of RPE65, an intermediate rate of rhodopsin regeneration, and an intermediated LDS, suggesting that neither copy had a dominant effect.

### Dark-adapted levels of rhodopsin do not determine LDS

Light-induced apoptosis of rods is mediated by rhodopsin (Grimm et al., 2000), and it was previously asserted that R<sub>0</sub> positively correlates with LDS (Noell and Albrecht, 1971; Noell et al., 1966; Organisciak et al., 1987; Remé et al., 1998b). However, BALB/c mice, showing the highest LDS, had the lowest R<sub>0</sub> but regenerated rhodopsin with the fastest kinetics. Thus, the critical determinant for LDS, at least in mice homozygous for their respective *Rpe65* variant, seems to be the regeneration rate and thus photon absorption over time. Pigmentation, at least when pupils were dilated, had very little influence on LDS, because albinotic B6;129S(N2) mice were only slightly more vulnerable to light damage than pigmented littermates and distinctly less vulnerable than albinotic BALB/c and 129/Ola mice.

### *Rpe65* genotype determines LDS phenotype

RPE65, expressed in the pigment epithelium, is essential for the isomerization of all-*trans* into 11-*cis*-retinoids, required for the generation/regeneration of rhodopsin in the visual cycle. The lack of RPE65 prevents rhodopsin generation/regeneration and consequently leads to the absence of the visual pigment from photoreceptors (Redmond et al., 1998). Here, the two strains with slow rhodopsin regeneration kinetics and low LDS (B6;129S(N2) and C57BL/6J) carried the *Rpe65* Leu450Met variation, whereas both strains with fast kinetics and high LDS had the normal sequence found in most species, including humans (Danciger et al., 2000). In strains with variant *Rpe65* gene, only low protein levels of RPE65 were detectable, whereas high amounts of the protein were found in BALB/c and 129/Ola mice with the normal sequence. B6CF<sub>1</sub> mice that were heterozygous for normal and variant RPE65 showed intermediate levels of the protein and an intermediate LDS. Thus, presence of one normal allele was insufficient to restore normal levels of RPE65; this finding is in line with the observation of 50% reduced RPE65 levels in *Rpe65*<sup>+/-</sup> mice (data not shown; Van Hooser et al., 2000). Despite different amounts of the protein, no differences were found in *Rpe65* mRNA levels among the four strains tested. This suggests that either the translation rate of the C57BL/6J variant of *Rpe65* was decreased and/or that the turnover of the variant protein was accelerated due to its different amino acid sequence. A post-transcriptional regulation of *Rpe65* was also observed in pigment epithelial cells *in vitro* (Hamel et al., 1993).

Two other ancillary proteins of the visual cycle, IRBP and CRALBP, which likewise may have an impact on rhodopsin regeneration (Smith et al., 1997; Ripps et al., 2000; Saari, 2000), were not differentially expressed in the four strains of mice. Thus, in line with findings from *Rpe65*<sup>+/-</sup> mice (50% reduced levels of RPE65) that show a slower regeneration rate than *Rpe65*<sup>+/+</sup> mice (data not shown; Van Hooser et al., 2000), the amount of RPE65

protein appeared to be the critical determinant for the kinetics of rhodopsin regeneration.

Proteins involved in signal transduction [e.g., rhodopsin kinase or arrestin (Baylor and Burns, 1998), which terminate signaling of activated rhodopsin, or transducin, the G-protein activated by rhodopsin (Fung et al., 1981)], may influence LDS (C. K. Chen et al., 1999; J. Chen et al., 1999). However, no major differences were found in levels of rhodopsin kinase, arrestin, or transducin among the four strains of mice.

Thus, it appears very likely that the RPE65 amino acid substitution found in mice with a C57BL/6J genetic background is the primary genetic factor reducing LDS. Indeed, it accounts for ~47% of the light damage protective effect in these mice (Danciger et al., 2000).

### Additional factors in C57BL/6J mice

Our findings point to factors apart from L450M in RPE65 that increase resistance against light damage in pure C57BL/6J mice. Despite being indistinguishable from B6;129S(N2) mice in terms of RPE65 variant, ancillary protein levels, and rhodopsin regeneration (see above), it took >10 times more photons ( $120 \times 10^{13}$ ) to induce light damage in C57BL/6J mice compared with B6;129S(N2) mice ( $11 \times 10^{13}$  photons). Likewise, the genetic study by Danciger et al. (2000) suggests several (unidentified) genetic loci apart from *Rpe65* conferring low LDS in C57BL/6J mice. Biochemically, several candidates such as glutathione-dependent enzymes, fatty acid composition, or cytoplasmic amino acids were excluded in previous work (Naash et al., 1989). In contrast to the L450M variation, these unknown genetic factors may exert their protective effect only at homozygosity. In B6CF<sub>1</sub> mice, the threshold dose of photons required to induce light damage was similar to that observed in all mice but C57BL/6J mice. Thus, although one copy each of these putative protective genes of C57BL/6J was present in the F<sub>1</sub> animals, their LDS appeared to be solely determined by their RPE65 status.

### Relevance for age-related loss of photoreceptors?

Is kinetics of rhodopsin regeneration a factor relevant for age-related human retinal diseases that are suspect to be accelerated by light (Taylor et al., 1990; Cruickshanks et al., 1993; Simons, 1993; Cideciyan et al., 1998; Mata et al., 2000)? This may indeed be the case: mice carrying the normal RPE65 protein (such as BALB/c mice), and thus having fast kinetics of rhodopsin regeneration, show significant loss of photoreceptors with age, whereas mice carrying the variant *Rpe65* sequence (such as C57BL/6J mice) do not (Danciger et al., 2000). Interestingly, preliminary data from a clinical study on patients with a slowed dark adaptation (rhodopsin regeneration) indicate that these patients show a lower prevalence for neovascular age-related macular degeneration (F. Hafezi, C. Grimm, A. Wenzel, C. E. Remé, and A. Thölen, unpublished observations). Thus, by modulating the daily dose of photons absorbed by the retina, differences in rhodopsin regeneration kinetics might indeed modulate retinal susceptibility to the environmental risk-factor light.

### REFERENCES

- Baylor DA, Burns ME (1998) Control of rhodopsin activity in vision. *Eye* 12:521–525.
- Chen CK, Burns ME, Spencer M, Niemi GA, Chen J, Hurley JB, Baylor DA, Simon MI (1999) Abnormal photoresponses and light-induced apoptosis in rods lacking rhodopsin kinase. *Proc Natl Acad Sci USA* 96:3718–3722.
- Chen J, Simon MI, Matthes MT, Yasumura D, LaVail MM (1999) Increased susceptibility to light damage in an arrestin knockout mouse

- model of Oguchi disease (stationary night blindness). *Invest Ophthalmol Vis Sci* 40:2978–2982.
- Cideciyan AV, Hood DC, Huang Y, Banin E, Li ZY, Stone EM, Milam AH, Jacobson SG (1998) Disease sequence from mutant rhodopsin allele to rod and cone photoreceptor degeneration in man. *Proc Natl Acad Sci USA* 95:7103–7108.
- Crabb JW, Gaur VP, Garwin GG, Marx SV, Chapline C, Johnson CM, Saari JC (1991) Topological and epitope mapping of the cellular retinaldehyde-binding protein from retina. *J Biol Chem* 266:16674–16683.
- Cruickshanks KJ, Klein R, Klein BE (1993) Sunlight and age-related macular degeneration: the Beaver Dam Eye Study. *Arch Ophthalmol* 111:514–518.
- Danciger M, Matthes MT, Yasumura D, Akhmedov NB, Rickabaugh T, Gentleman S, Redmond TM, LaVail MM, Farber DB (2000) A QTL on distal Chr 3 that influences the severity of light-induced damage to mouse photoreceptors. *Mamm Genome* 11:422–427.
- Fung BK, Hurley JB, Stryer L (1981) Flow of information in the light-triggered cyclic nucleotide cascade of vision. *Proc Natl Acad Sci USA* 78:152–156.
- Grimm C, Wenzel A, Hafezi F, Yu S, Redmond TM, Reme CE (2000) Protection of Rpe65-deficient mice identifies rhodopsin as a mediator of light-induced retinal degeneration. *Nat Genet* 25:63–66.
- Hamel CP, Tsilou E, Pfeffer BA, Hooks JJ, Detrick B, Redmond TM (1993) Molecular cloning and expression of RPE65, a novel retinal pigment epithelium-specific microsomal protein that is post-transcriptionally regulated in vitro. *J Biol Chem* 268:15751–15757.
- Hamm HE, Deretic D, Hofmann KP, Schleicher A, Kohl B (1987) Mechanism of action of monoclonal antibodies that block the light activation of the guanyl nucleotide-binding protein, transducin. *J Biol Chem* 262:10831–10838.
- Ihaka R, Gentleman R (1996) R: a language for data analysis and graphics. *J Computational Graphical Statistics* 5:299–314.
- Kueng-Hitz N, Grimm C, Linsel N, Hafezi F, He L, Fox D, Remé CE, Niemeyer G, Wenzel A (2000) The retina of c-fos<sup>+/+</sup> and c-fos<sup>-/-</sup> mice: electrophysiological, morphological, and biochemical aspects. *Invest Ophthalmol Vis Sci* 41:909–916.
- LaVail MM, Gorrin GM, Repaci MA, Thomas LA, Ginsberg HM (1987) Genetic regulation of light damage to photoreceptors. *Invest Ophthalmol Vis Sci* 28:1043–1048.
- LaVail MM, Gorrin GM, Yasumura D, Matthes MT (1999) Increased susceptibility to constant light in nr and pcd mice with inherited retinal degeneration. *Invest Ophthalmol Vis Sci* 40:1020–1024.
- Lessard JL (1988) Two monoclonal antibodies to actin: one muscle selective and one generally reactive. *Cell Motil Cytoskeleton* 10:349–362.
- Mata NL, Weng J, Travis GH (2000) Biosynthesis of a major lipofuscin fluorophore in mice and humans with ABCR-mediated retinal and macular degeneration. *Proc Natl Acad Sci USA* 97:7154–7159.
- Naash MI, LaVail MM, Anderson RE (1989) Factors affecting the susceptibility of the retina to light damage. *Prog Clin Biol Res* 314:513–522.
- Noell WK, Albrecht A (1971) Irreversible effects of visible light on the retina: role of vitamin A. *Science* 172:76–79.
- Noell WK, Walker VS, Kang BS, Berman S (1966) Retinal damage by light in rats. *Invest Ophthalmol* 5:450–473.
- Organisciak DT, Wang HM, Noell WK (1987) Aspects of the ascorbate protective mechanism in retinal light damage of rats with normal and reduced ROS docosahexaenoic acid. *Prog Clin Biol Res* 247:455–468.
- Organisciak DT, Li M, Darrow RM, Farber DB (1999) Photoreceptor cell damage by light in young Royal College of Surgeons rats. *Curr Eye Res* 19:188–196.
- Palczewski K, Van Hooser JP, Garwin GG, Chen J, Liou GI, Saari JC (1999) Kinetics of visual pigment regeneration in excised mouse eyes and in mice with a targeted disruption of the gene encoding interphotoreceptor retinoid-binding protein or arrestin. *Biochemistry* 38:12012–12019.
- Powers DA, Xie Y (2000) Statistical methods for categorical data analysis. San Diego: Academic.
- Redmond TM, Hamel CP (2000) Genetic analysis of RPE65: from human disease to mouse model. *Methods Enzymol* 316:705–724.
- Redmond TM, Yu S, Lee E, Bok D, Hamasaki D, Chen N, Goletz P, Ma JX, Crouch RK, Pfeifer K (1998) Rpe65 is necessary for production of 11-cis-vitamin A in the retinal visual cycle. *Nat Genet* 20:344–351.
- Remé CE, Grimm C, Hafezi F, Marti A, Wenzel A (1998a) Apoptotic cell death in retinal degenerations. *Prog Retin Eye Res* 17:443–464.
- Remé CE, Hafezi F, Munz K, Reinboth JJ (1998b) Light damage to the retina and pigment epithelium. In: The pigment epithelium, current aspects of function and disease (Marmor MF, Wolfensberger TJ, eds), pp 563–586. New York: Oxford UP.
- Ripps H, Peachey NS, Xu X, Nozelli SE, Smith SB, Liou GI (2000) The rhodopsin cycle is preserved in IRBP “knockout” mice despite abnormalities in retinal structure and function. *Vis Neurosci* 17:97–105.
- Saari JC (2000) Biochemistry of visual pigment regeneration. *Invest Ophthalmol Vis Sci* 41:337–348.
- Sanyal S, Hawkins RK (1986) Development and degeneration of retina in rds mutant mice: effects of light on the rate of degeneration in albino and pigmented homozygous and heterozygous mutant and normal mice. *Vision Res* 26:1777–1785.
- Simons K (1993) Artificial light and early-life exposure in age-related macular degeneration and in cataractogenic phototoxicity. *Arch Ophthalmol* 111:297–298.
- Smith SB, McClung J, Wiggert BN, Nir I (1997) Delayed rhodopsin regeneration and altered distribution of interphotoreceptor retinoid binding protein (IRBP) in the mi(vit)/mi(vit) (vitiligo) mouse. *J Neurocytol* 26:605–613.
- Taylor HR, Munoz B, West S, Bressler NM, Bressler SB, Rosenthal FS (1990) Visible light and risk of age-related macular degeneration. *Trans Am Ophthalmol Soc* 88:163–173.
- Van Hooser JP, Aleman TS, He YG, Cideciyan AV, Kuksa V, Pittler SJ, Stone EM, Jacobson SG, Palczewski K (2000) Rapid restoration of visual pigment and function with oral retinoid in a mouse model of childhood blindness. *Proc Natl Acad Sci USA* 97:8623–8628.
- Wang M, Lam TT, Tso MO, Naash MI (1997) Expression of a mutant opsin gene increases the susceptibility of the retina to light damage. *Vis Neurosci* 14:55–62.
- Wenzel A, Grimm C, Marti A, Kueng-Hitz N, Hafezi F, Niemeyer G, Remé CE (2000) c-Fos controls the “private pathway” of light-induced apoptosis of retinal photoreceptors. *J Neurosci* 20:80–88.
- Zhao X, Huang J, Khani SC, Palczewski K (1998) Molecular forms of human rhodopsin kinase (GRK1). *J Biol Chem* 273:5124–5131. damage by light in young Royal College of Surgeons rats. *Curr Eye Res* 19:188–196.