

Meta-analysis of prognostic factors for patients with colorectal peritoneal metastasis undergoing cytoreductive surgery and heated intraperitoneal chemotherapy

S. Hallam¹ , R. Tyler¹, M. Price², A. Beggs¹ and H. Youssef³

¹Institute of Cancer and Genomic Sciences and ²Institute of Applied Health Research, University of Birmingham, and ³Colorectal Surgery, Good Hope Hospital, University Hospitals Birmingham NHS Foundation Trust, Birmingham, UK

Correspondence to: Ms S. Hallam, Institute of Cancer and Genomic Sciences, University of Birmingham, Edgbaston, Birmingham B15 2SY, UK (e-mail: sally84hallam@gmail.com)

Background: Up to 15 per cent of colorectal cancers present with peritoneal metastases (CPM). Cytoreductive surgery and heated intraperitoneal chemotherapy (CRS + HIPEC) aims to achieve macroscopic tumour resection combined with HIPEC to destroy microscopic disease. CRS + HIPEC is a major operation with significant morbidity and effects on quality of life (QoL). Improving patient selection is crucial to maximize patient outcomes while minimizing morbidity and mortality. The aim of this study was to identify prognostic factors for patients with CPM undergoing CRS + HIPEC.

Methods: A systematic search of MEDLINE, Embase and Cochrane Library electronic databases was performed using terms for colorectal cancer, peritoneal metastasis and CRS + HIPEC. Included studies focused on the impact of prognostic factors on overall survival following CRS + HIPEC in patients with CPM.

Results: Twenty-four studies described 3128 patients. Obstruction or perforation of the primary tumour (hazard ratio (HR) 2.91, 95 per cent c.i. 1.5 to 5.65), extent of peritoneal metastasis as described by the Peritoneal Carcinomatosis Index (PCI) (per increase of 1 PCI point: HR 1.07, 1.02 to 1.12) and the completeness of cytoreduction (CC score above zero: HR 1.75, 1.18 to 2.59) were associated with reduced overall survival after CRS + HIPEC.

Conclusion: Primary tumour obstruction or perforation, PCI score and CC score are valuable prognostic factors in the selection of patients with CPM for CRS + HIPEC.

Funding information

No funding

Paper accepted 3 April 2019

Published online 27 June 2019 in Wiley Online Library (www.bjsopen.com). DOI: 10.1002/bjs.5.50179

Introduction

Colorectal peritoneal metastasis (CPM) occurs in up to 15 per cent of patients with colorectal cancer^{1–3}. The prognosis of patients with CPM is poor: untreated median overall survival (OS) is just 6 months⁴. With systemic chemotherapy, median OS is improved to up to 20 months^{5–7}. The standard for CPM is cytoreductive surgery and heated intraperitoneal chemotherapy (CRS + HIPEC), which may improve median OS by 20–63 months^{8–16}.

CRS + HIPEC is a long, high-cost operation associated with a protracted inpatient and high-dependency or intensive care unit stay, and an associated mortality rate of 1–12 per cent and morbidity rate of 7–63 per cent^{11,14,16–23}. Improving patient selection is therefore

crucial to maximize patient outcomes whilst minimizing morbidity and mortality.

Variation in outcomes for CRS + HIPEC can be explained in part by patient selection, for example necessitating the ability to achieve complete cytoreduction at CRS, the exclusion of patients with extensive CPM as assessed by Sugarbaker's Peritoneal Carcinomatosis Index (PCI), and selection of patients with minimal co-morbidity and good performance status.

Several clinicopathological variables that impact on survival have been identified in the literature, including lymph node (LN) status, tumour differentiation and histological findings, the completeness of cytoreduction (CC score) and PCI. There is wide variation, however, in the variables reported by studies and selection criteria for

centres performing CRS + HIPEC worldwide, and in turn in their outcomes.

Studies reporting prognostic factors for CRS + HIPEC are cohort in design with small samples, and each examines numerous and varying prognostic factors on differing scales of measurement. No consensus exists as to which prognostic factors contraindicate CRS + HIPEC, or predict a good outcome. A comprehensive evidence synthesis is therefore called for to determine relevant prognostic factors.

The aim of this systematic review and meta-analysis was to analyse all prognostic factors affecting OS in patients with CPM undergoing CRS + HIPEC.

Methods

A comprehensive literature search was conducted in accordance with the PRISMA guidelines²⁴. MEDLINE, Embase and Cochrane Library electronic databases, registers of clinical trials (ClinicalTrials.gov and the WHO International Clinical Trials Registry) and the Conference Proceedings Citation Index, Zetoc, were searched from inception to the present. The search strategy captured terms for colorectal cancer, peritoneal metastasis and CRS + HIPEC techniques, separated by the Boolean operator 'AND'. For an example search strategy, see *Appendix S1* (supporting information). Searches were supplemented by a hand search of selected journals and the reference lists of all included studies.

Study selection

English-language articles were eligible for inclusion if they reported on the impact of prognostic factors on OS in patients with CPM undergoing CRS + HIPEC. Where multiple studies described the same cohort of patients, the largest and most complete data set was included. Review articles, case reports and case series of fewer than ten patients were excluded. Additional exclusion criteria included studies involving patients with a primary tumour other than colorectal cancer and studies in which a proportion of the cohort did not receive combined CRS + HIPEC.

After screening the titles and abstracts, articles fulfilling the eligibility criteria were identified and their full-text publications reviewed. Literature search and study selection were done independently by two researchers, and any disagreements were resolved by discussion with senior reviewers. After qualitative assessment, articles were screened to ensure they presented adequate statistical information to be included in the meta-analysis: hazard ratios (HRs) with confidence intervals or Kaplan–Meier curves with the number of events and patients at risk. When

HRs, confidence intervals or *P* values were not provided directly, the methods of Tierney *et al.*²⁵ were used to estimate them indirectly from Kaplan–Meier curves, when presented in adequate detail with the numbers of events and patients at risk²⁶.

Assessment of risk of bias

The quality and risk of bias of individual studies was assessed using the Quality in Prognosis Studies (QUIPS) tool²⁷. This tool reviews each study according to six criteria: study participation, attrition, prognostic factor measurement, outcome measurement, confounding factors, and statistical analysis and reporting. Two authors scored all articles independently.

Data extraction

Data were extracted independently by two reviewers using a dedicated and piloted data extraction form. The number of patients, study design, patient demographics, tumour characteristics, use of adjuvant and neoadjuvant regimens, CRS + HIPEC techniques, survival and prognostic factors were recorded.

The unadjusted HR and its 95 per cent c.i. and *P* value were extracted. When adjusted HRs (with confidence intervals and *P* values) were reported, these were extracted along with the set of adjustment factors used. If HRs, confidence intervals or *P* values were not provided directly, the methods of Tierney and colleagues²⁵ were used to estimate them indirectly from Kaplan–Meier curves, when presented in adequate detail with the numbers of events and patients at risk²⁶.

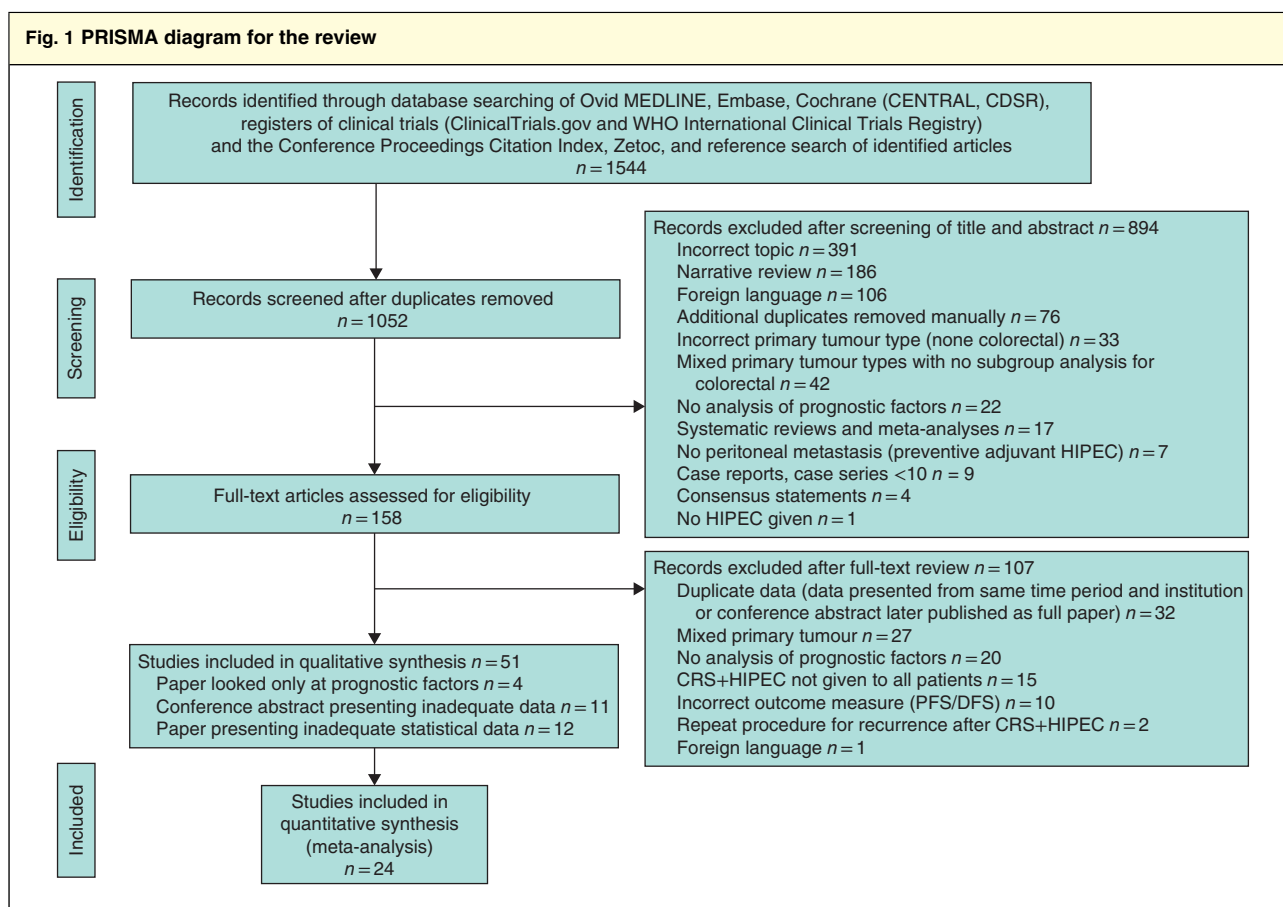
Prognostic factors reported on a continuous scale were extracted. If results were categorized into three or more categories, results for each comparison were extracted and, when clinically relevant, were grouped to form a binary comparison.

Prognostic factor selection

All prognostic factors described adequately and reported by two or more independent studies were included.

Statistical analysis

Owing to clinical and methodological heterogeneity, a random-effects meta-analysis was used (on the log(HR) scale) using the method of DerSimonian and Laird²⁸. The combined effect size was described by the pooled HR, its confidence interval and *P* value, with *P* < 0.050 considered significant. For prognostic factors reported by more than



CENTRAL, Cochrane Central Register of Controlled Trials; CDSR, Cochrane Database of Systematic Reviews; DARE, Database of Abstracts of Reviews of Effects; HIPEC, heated intraperitoneal chemotherapy; CRS, cytoreductive surgery; PFS, progression-free survival; DFS, disease-free survival.

two studies, a 95 per cent prediction interval (a measure of the variation in treatment effects) is presented²⁹. Heterogeneity was also described by the I^2 statistic³⁰. All analyses were performed in STATA[®] version 15 (StataCorp, College Station, Texas, USA).

Results

The final literature search was performed on 3 April 2018. Literature searches (after removal of duplicates) identified 1052 records. Titles and abstract screening identified 158 full-text articles for review. Of these, 51 studies met the inclusion criteria. Twenty-four unique studies^{11,18,20,31–51} reporting on 3128 patients with CPM presented adequate data to be included in the meta-analysis (Fig. 1). Of the 24 cohort studies, six^{18,34,37,40,44,47} were prospective and the remaining 18^{11,20,31–33,35,36,38,39,41–43,45,46,48–51} were retrospective (Table S1, supporting information).

A number of studies presented both an unadjusted and adjusted HR. As adjustment factors varied widely between

studies (Table S2, supporting information), meta-analysis was stratified according to whether the HR was unadjusted or adjusted.

Quality of research

There was a low risk of bias from study participation. The moderate risk of bias due to study attrition reflects the poor reporting of loss to follow-up. There was a low risk of bias due to prognostic factor measurement. Prognostic factors were objective, clearly defined and clinically relevant. Reporting of all prognostic factors and treatment variations was incomplete in the majority of studies, resulting in a moderate risk of bias. The presentation of results and analytical strategy was sufficient in the majority of studies resulting in a low risk of bias (Table S3, supporting information).

Pooled median OS across all studies was 32 (range 12.2–51) months, with a pooled median follow-up of 28.1 (13.3–62.4) months (Table S4, supporting information).

Patient factors

Age

The pooled median age of patients included was 54 (range 45.5–69.3) years. Eleven studies^{18,20,33,34,37,40,42,48–50,52} reported on age as a prognostic factor and ten presented adequate data to be included in the meta-analysis. Five studies categorized age into binary outcomes that could not be combined meaningfully. The pooled unadjusted HR was 1.00 (95 per cent c.i. 0.98 to 1.03) ($I^2 = 38.5$ per cent) and adjusted HR was 1.00 (0.96 to 1.04) ($I^2 = 69.3$ per cent), for an increase in age of 1 year (Fig. 2; Fig. S1, supporting information). These data provide no evidence that age is a useful predictor of OS.

Sex

Nine studies^{18,20,34,36,37,40,42,51,52} reported on the effect of sex on OS and eight presented adequate data to be included in the meta-analysis. The pooled unadjusted HR for male sex was 1.20 (95 per cent c.i. 0.83 to 1.71) ($I^2 = 33.8$ per cent) and adjusted HR was 1.73 (1.20 to 2.48) ($I^2 = 11.6$ per cent) (Fig. 2; Fig. S1, supporting information). It is therefore unclear whether sex is a useful predictor of OS.

Eastern Cooperative Oncology Group performance status

Five studies^{18,31,43,52,53} reported on the influence of Eastern Cooperative Oncology Group (ECOG) status on OS, and three presented adequate data to be included in the meta-analysis. The pooled unadjusted HR for an ECOG score of at least 2 was 1.77 (95 per cent c.i. 0.85 to 3.67) ($I^2 = 0$ per cent) (Fig. 2; Fig. S1, supporting information). These data provide no evidence that ECOG is a useful predictor of OS.

Tumour factors

Adverse primary tumour features

Three studies^{18,33,52} reported on the influence of adverse features of the primary tumour (obstruction or perforation) on OS; two presented adequate data to be included in the meta-analysis. The pooled adjusted HR for adverse features of the primary tumour was 2.91 (95 per cent c.i. 1.5 to 5.64) ($I^2 = 0$ per cent) (Fig. 2; Fig. S1, supporting information). These data indicate that adverse primary features are a useful predictor of decreased OS (Table S5, supporting information).

Rectal or colonic primary

Eight studies^{20,34,36,40,43,47,53,54} reported on the influence of a rectal or colonic primary on OS and six presented adequate data to be included in the meta-analysis. The pooled

unadjusted HR for rectal primary (compared with colonic primary) was 1.48 (95 per cent c.i. 0.71 to 3.09) ($I^2 = 73.8$ per cent) (Fig. 2; Fig. S1, supporting information). These data provide no evidence that a rectal primary is a useful predictor of OS.

Lymph node metastasis

Eleven studies^{11,18,33–35,37,48–50,53,54} reported on the effect of LN status on OS; nine presented adequate data to be included in the meta-analysis. The pooled unadjusted HR for positive LNs (compared with negative LNs) was 1.42 (95 per cent c.i. 1.06 to 1.92) ($I^2 = 0$ per cent) and adjusted HR was 1.08 (0.60 to 1.95) ($I^2 = 68.6$ per cent) (Fig. 2; Fig. S1, supporting information). It is therefore unclear whether lymph nodes are a useful predictor of OS.

Tumour differentiation

Two studies^{34,40} reported on the effect of primary tumour differentiation on OS. The pooled unadjusted HR for well differentiated tumours was 0.90 (95 per cent c.i. 0.18 to 4.40) ($I^2 = 72.4$ per cent) (Fig. 2; Fig. S1, supporting information). These data provide no evidence that primary tumour differentiation is a useful predictor of OS.

Timing of colorectal peritoneal metastasis (synchronous or metachronous)

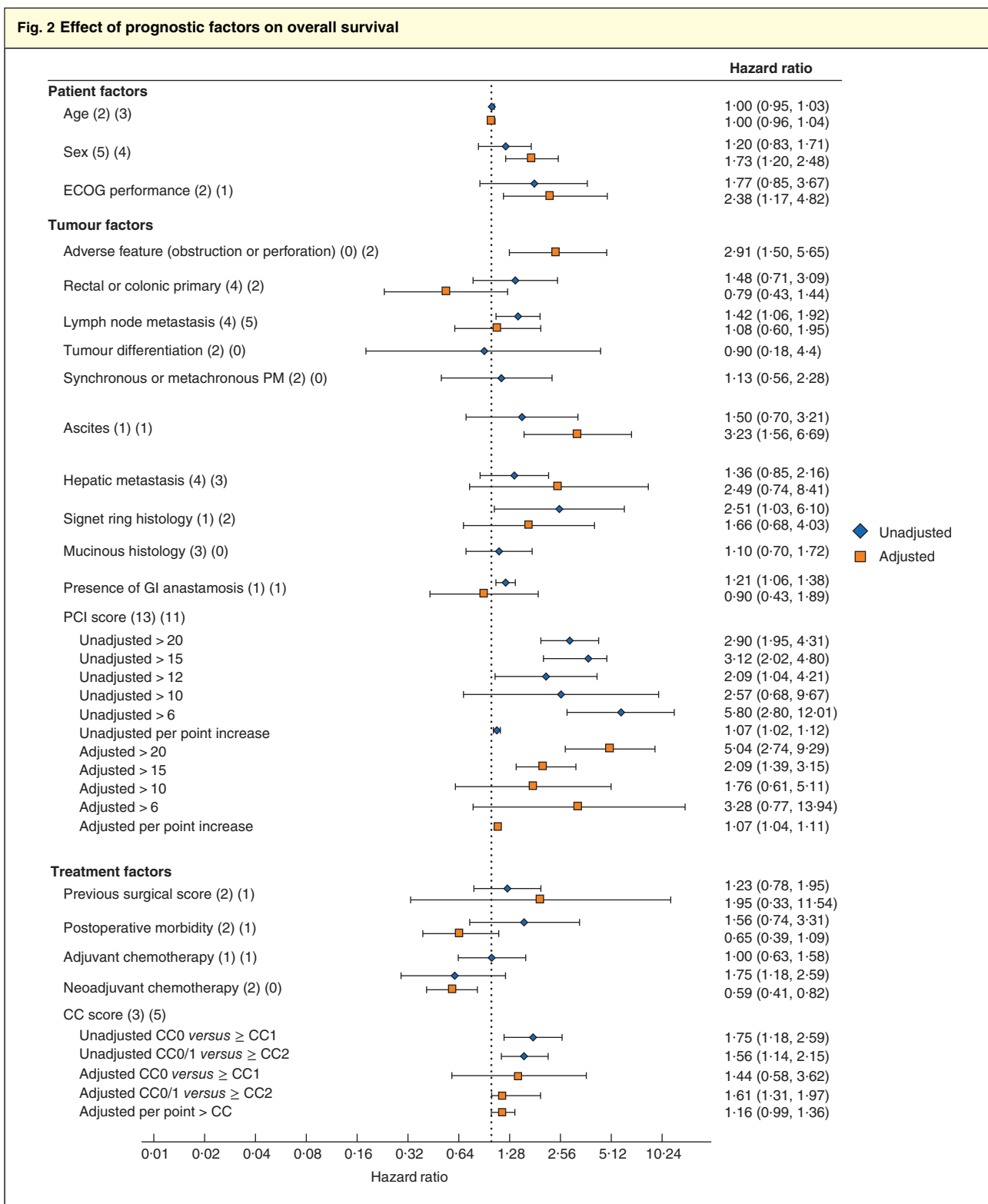
Three studies^{11,40,54} reported on the effect of the timing of CPM (synchronous or metachronous) on OS. Two presented adequate data to be included in the meta-analysis. The pooled unadjusted HR for synchronous CPM was 1.13 (95 per cent c.i. 0.56 to 2.28) ($I^2 = 57.1$ per cent) (Fig. 2; Fig. S1, supporting information), indicating that the timing of CPM is not a useful predictor of OS.

Ascites

Two studies^{18,40} reported on the effect of malignant ascites on OS. One paper⁴⁰ presented an unadjusted HR (1.50, 95 per cent c.i. 0.70 to 3.21) and one¹⁸ an adjusted HR (3.23, 1.56 to 6.69) (Fig. 2; Fig. S1, supporting information), so it was not possible to provide a pooled effect estimate.

Hepatic metastasis

Eleven studies^{18,31,34–38,43,44,47,50} reported on the effect of surgically treated hepatic metastasis on OS. Seven presented adequate data to be included in the meta-analysis. The pooled unadjusted HR for surgically treated hepatic metastasis was 1.36 (95 per cent c.i. 0.85 to 2.16) ($I^2 = 43.6$ per cent) and the adjusted HR was 2.49 (0.74 to 8.41) ($I^2 = 85.3$ per cent) (Fig. 2; Fig. S1, supporting information). These data provide no evidence that the presence of surgically treated hepatic metastasis is a useful predictor of OS.



Hazard ratios are shown with 95 per cent confidence intervals. Values in parentheses after each factor indicate the numbers of studies providing unadjusted and adjusted hazard ratios respectively. ECOG, Eastern Cooperative Oncology Group; PM, peritoneal metastasis; GI, gastrointestinal; PCI, Peritoneal Carcinomatosis Index; CC, completeness of cytoreduction.

Signet ring histology

Three studies^{11,42,46} reported on the effect of signet ring histology on OS. Two included adequate data to be included in the meta-analysis. The pooled adjusted HR for signet ring histology was 1.65 (95 per cent c.i. 0.68 to 4.03) ($I^2 = 0$ per cent) (Fig. 2; Fig. S1, supporting information), suggesting that signet ring histology is not a useful predictor of OS.

Mucinous histology

Four studies^{11,43,46,49} reported on the influence of mucinous histology on OS. Three studies presented adequate data to be included in the meta-analysis. The pooled unadjusted HR for mucinous histology was 1.10 (95 per cent c.i. 0.70 to 1.72) ($I^2 = 0$ per cent) (Fig. 2; Fig. S1, supporting information), suggesting that mucinous histology is not a useful predictor of OS.

Gastrointestinal anastomosis in CRS + HIPEC

Two studies^{18,43} reported on the effect of one or more gastrointestinal anastomoses on OS. One paper⁴³ presented an unadjusted HR (1.21, 95 per cent c.i. 1.06 to 1.38) and the other¹⁸ an adjusted HR (0.90, 0.43 to 1.89) (Fig. 2; Fig. S1, supporting information), so it was not possible to provide a pooled effect estimate.

Peritoneal Carcinomatosis Index

Eighteen studies^{11,20,31–38,40,41,43,45,49,50,54,55} reported on the effect of the extent of CPM as described by the PCI; 16 studies presented adequate data to be included in the meta-analysis. PCI score was reported as a continuous variable or condensed into categorical variables.

A PCI score greater than the following levels was predictive of reduced OS: PCI above 20 (unadjusted HR 2.90, 95 per cent c.i. 1.95 to 4.31, $I^2 = 0$ per cent; adjusted HR 5.04, 2.74 to 9.29, $I^2 = 0$ per cent); PCI above 15 (unadjusted HR 3.12, 2.02 to 4.80, $I^2 = 0$ per cent; adjusted HR 2.09, 1.39 to 3.15, $I^2 = 0$ per cent). PCI as a continuous variable was predictive of reduced OS: pooled unadjusted HR 1.07 (1.02 to 1.12) per increase of one PCI point ($I^2 = 46.1$ per cent); pooled adjusted HR 1.07 (1.04 to 1.11) per PCI point increase ($I^2 = 67.1$ per cent). Lower PCI levels were not predictive of OS: PCI above 10 (unadjusted pooled HR 2.57, 0.68 to 9.67; $I^2 = 90$ per cent); PCI above 6, adjusted pooled HR 3.28 (0.77 to 13.94; $I^2 = 92$ per cent) (Fig. 2; Fig. S1, supporting information).

Treatment factors

Previous surgical score

Three studies^{11,34,42} reported on the influence of the previous surgical score (PSS) on OS. The pooled unadjusted

HR for a PSS of at least 2 was 1.23 (95 per cent c.i. 0.78 to 1.95) ($I^2 = 0$ per cent) (Fig. 2; Fig. S1, supporting information). These data provide no evidence that PSS is a useful predictor of OS.

Postoperative morbidity

Three studies^{40,43,50} reported on the association between postoperative morbidity and OS. The pooled unadjusted HR for a Clavien–Dindo complication of grade III or above was 1.56 (95 per cent c.i. 0.74 to 3.31) ($I^2 = 48.7$ per cent) (Fig. 2; Fig. S1, supporting information). These data provide no evidence that postoperative morbidity is a useful predictor of OS.

Neoadjuvant and adjuvant chemotherapy

Neoadjuvant and adjuvant treatment of the primary tumour was reported poorly (Table S6, supporting information). No study reported response to treatment, or whether it was completed as planned.

Two studies^{11,43} reported on the effect of neoadjuvant chemotherapy before CRS + HIPEC on OS. The pooled unadjusted HR for the use of neoadjuvant chemotherapy was 1.00 (95 per cent c.i. 0.63 to 1.58) ($I^2 = 0$ per cent) (Fig. 2; Fig. S1, supporting information). These data provide no evidence that neoadjuvant chemotherapy is a useful predictor of OS.

Adjuvant chemotherapy

Four studies^{11,35,43,50} reported on the effect of adjuvant chemotherapy after CRS + HIPEC on OS. The pooled unadjusted HR for adjuvant chemotherapy was 0.60 (95 per cent c.i. 0.29 to 1.21) ($I^2 = 68.1$ per cent) (Fig. 2; Fig. S1, supporting information), which suggests there is no evidence that use of adjuvant chemotherapy is predictive of OS.

Completeness of cytoreduction

Eight studies^{11,32,35,40,42,43,51,55} reported on the effect of the completeness of cytoreduction on OS; seven presented adequate data to be included in the meta-analysis. A CC score above zero was predictive of a reduction in OS (unadjusted HR 1.75, 95 per cent c.i. 1.18 to 2.59) ($I^2 = 79.5$ per cent), as was a CC score of 2 or more (HR 1.61, 1.31 to 1.97) ($I^2 = 0$ per cent) (Fig. 2; Fig. S1, supporting information).

Discussion

This systematic review and meta-analysis examined the effect of prognostic factors on OS following CRS + HIPEC for CPM. Emergency presentation with obstruction or perforation of the primary tumour as well as the

extent of CPM and the completeness of resection, as described by the PCI and the CC score respectively, were the only significant prognostic factors.

An emergency presentation of the primary tumour with obstruction or perforation was predictive of reduced OS (for both synchronous and metachronous CPM). A number of factors may contribute to this. In the primary setting, colorectal cancers presenting with obstruction or perforation are associated with decreased cancer-specific survival and increased postoperative mortality⁵⁶. Obstructed or perforated colorectal cancer is, by definition, advanced in stage and increases the risk of metastasis; additionally, emergency presentation limits the possibility of neoadjuvant treatment and may delay adjuvant treatment owing to postoperative morbidity. The extent of peritoneal metastasis as described by the PCI was predictive of reduced OS as a continuous variable and when the PCI score was 12 or above. A complete cytoreduction (CC0) was predictive of improved OS. Improving patient selection is therefore reliant on the ability to predict accurately the extent of peritoneal metastasis and the ability to resect it completely. Specialist radiologists have demonstrated good concordance between radiological and surgical PCI estimations, particularly when combining modalities; however, these tend to be most accurate in patients with high PCI scores^{57,58}. In some centres this is used in combination with diagnostic laparoscopy before CRS + HIPEC. This is feasible in the majority of patients and may help to reduce the laparotomy rate in patients for whom CRS + HIPEC may not be possible⁵⁹.

Included patients were relatively young at 54 (range 45–69) years compared with the incident age of colorectal cancer (80–90 years)⁶⁰. In addition, performance status was not reported by the majority of studies in the review, and limited to an ECOG score of less than 2 by a further nine. Within these limits, no other patient or tumour factor was predictive of OS.

Details of neoadjuvant and adjuvant treatments were reported poorly in the included studies. Within these limits, the use of neoadjuvant or adjuvant chemotherapy was not predictive of OS after CRS + HIPEC. One meta-analysis, by Kwakman and colleagues⁶¹ from 2016, examined the effect of clinicopathological variables only on OS following CRS + HIPEC. Significant prognostic factors identified in the present review (adverse features of the primary tumour, PCI, CC score) were not comparable with those from Kwakman *et al.*⁶¹ as they were not examined. In contrast to the present study, Kwakman and co-workers⁶¹ found performance status, the presence of lymph node or hepatic metastasis, tumour differentiation, signet ring histology, a rectal primary and the use of

neoadjuvant chemotherapy to be predictive prognostic factors. A number of differences may explain this variation in findings: the exclusion of 73 papers described as unavailable in full text may introduce a potential selection bias⁶¹. In addition, a number of studies included by Kwakman and colleagues were excluded in the present study for the following reasons: presentation of inadequate data to estimate the HR accurately^{13,52,54,62} the inclusion of mixed primary tumours^{48,63,64}, and the inclusion of patients having repeat CRS + HIPEC procedures. Finally, the meta-analysis⁶¹ combined all studies regardless of the presentation of unadjusted or adjusted HR.

The strengths of the present study include the comprehensive and systematic literature search including 3128 patients with CPM undergoing CRS + HIPEC, all potential prognostic factors were included, and a consistent association was found between predictive prognostic factors across different studies. The low heterogeneity associated with these factors adds to the strength and generalizability of the findings. The application of strict inclusion criteria limits the potential impact of factors such as mixed primary tumour origin. The present analysis takes into account the adjustment factors used in primary studies to ensure meta-analysis of time to event data was performed only when data were comparable.

A number of limitations must, however, be acknowledged. This review is limited by the quality of primary studies and the heterogeneity of the population. Prognostic factor systematic reviews, by their nature, represent one of the most difficult categories due to their retrospective and observational nature. As CRS + HIPEC is performed at tertiary centres, data concerning the primary tumour and its treatment may not have been captured or reported fully. Additionally, the statistical analysis and presentation of data necessary for accurate meta-analysis varied widely across primary studies, which may introduce a degree of inclusion bias.

There was a lack of molecular and genetic data concerning patients with CPM undergoing CRS + HIPEC in comparison with studies of primary colorectal cancer, and this is an area for future research. Discordance between primary genetic mutations and those in peritoneal metastases may identify novel therapeutic targets and prognostic markers in this metastatic group. Recent research by Schneider and colleagues⁶⁵ found that *RAS/RAF* mutations impair survival after CRS/HIPEC, although this is the only study that has considered this prognostic factor and validation is required. Further large-scale research is needed to account for these factors; this would require collaboration between CRS + HIPEC centres, standardization of the analysis and presentation of prognostic factor time to event data.

Disclosure

The authors declare no conflict of interest.

References

- Jayne DG, Fook S, Loi C, Seow-Choen F. Peritoneal carcinomatosis from colorectal cancer. *Br J Surg* 2002; **89**: 1545–1550.
- Segelman J, Granath F, Holm T, Machado M, Mahteme H, Martling A. Incidence, prevalence and risk factors for peritoneal carcinomatosis from colorectal cancer. *Br J Surg* 2012; **99**: 699–705.
- Quere P, Facy O, Manfredi S, Jooste V, Faivre J, Lepage C *et al.* Epidemiology, management, and survival of peritoneal carcinomatosis from colorectal cancer: a population-based study. *Dis Colon Rectum* 2015; **58**: 743–752.
- Chu DZ, Lang NP, Thompson C, Osteen PK, Westbrook KC. Peritoneal carcinomatosis in nongynecologic malignancy. A prospective study of prognostic factors. *Cancer* 1989; **63**: 364–367.
- Klaver YL, Simkens LH, Lemmens VE, Koopman M, Teerenstra S, Bleichrodt RP *et al.* Outcomes of colorectal cancer patients with peritoneal carcinomatosis treated with chemotherapy with and without targeted therapy. *Eur J Surg Oncol* 2012; **38**: 617–623.
- van Oudheusden TR, Razenberg LG, van Gestel YR, Creemers GJ, Lemmens VE, de Hingh IH. Systemic treatment of patients with metachronous peritoneal carcinomatosis of colorectal origin. *Sci Rep* 2015; **5**: 18632.
- Franko J, Shi Q, Goldman CD, Pockaj BA, Nelson GD, Goldberg RM *et al.* Treatment of colorectal peritoneal carcinomatosis with systemic chemotherapy: a pooled analysis of north central cancer treatment group phase III trials N9741 and N9841. *J Clin Oncol* 2012; **30**: 263–267.
- Verwaal VJ, Bruin S, Boot H, van Slooten G, van Tinteren H. 8-year follow-up of randomized trial: cytoreduction and hyperthermic intraperitoneal chemotherapy *versus* systemic chemotherapy in patients with peritoneal carcinomatosis of colorectal cancer. *Ann Surg Oncol* 2008; **15**: 2426–2432.
- Glehen O, Kwiatkowski F, Sugarbaker PH, Elias D, Levine EA, De Simone M *et al.* Cytoreductive surgery combined with perioperative intraperitoneal chemotherapy for the management of peritoneal carcinomatosis from colorectal cancer: a multi-institutional study. *J Clin Oncol* 2004; **22**: 3284–3292.
- Glehen O, Gilly FN, Boutitie F, Bereder JM, Quenet F, Sideris L *et al.*; French Surgical Association. Toward curative treatment of peritoneal carcinomatosis from nonovarian origin by cytoreductive surgery combined with perioperative intraperitoneal chemotherapy: a multi-institutional study of 1290 patients. *Cancer* 2010; **116**: 5608–5618.
- Cashin PH, Graf W, Nygren P, Mahteme H. Cytoreductive surgery and intraperitoneal chemotherapy for colorectal peritoneal carcinomatosis: prognosis and treatment of recurrences in a cohort study. *Eur J Surg Oncol* 2012; **38**: 509–515.
- Elias D, Lefevre JH, Chevalier J, Brouquet A, Marchal F, Classe JM *et al.* Complete cytoreductive surgery plus intraperitoneal chemohyperthermia with oxaliplatin for peritoneal carcinomatosis of colorectal origin. *J Clin Oncol* 2009; **27**: 681–685.
- Franko J, Ibrahim Z, Gusani NJ, Holtzman MP, Bartlett DL, Zeh HJ III. Cytoreductive surgery and hyperthermic intraperitoneal chemoperfusion *versus* systemic chemotherapy alone for colorectal peritoneal carcinomatosis. *Cancer* 2010; **116**: 3756–3762.
- Hompes D, D'Hoore A, Van Cutsem E, Fieus S, Ceelen W, Peeters M *et al.* The treatment of peritoneal carcinomatosis of colorectal cancer with complete cytoreductive surgery and hyperthermic intraperitoneal perioperative chemotherapy (HIPEC) with oxaliplatin: a Belgian multicentre prospective phase II clinical study. *Ann Surg Oncol* 2012; **19**: 2186–2194.
- Moran B, Cecil T, Chandrakumar K, Arnold S, Mohamed F, Venkatasubramanian A. The results of cytoreductive surgery and hyperthermic intraperitoneal chemotherapy in 1200 patients with peritoneal malignancy. *Colorectal Dis* 2015; **17**: 772–778.
- Cavaliere F, Valle M, De Simone M, Deraco M, Rossi CR, Di Filippo F *et al.* 120 peritoneal carcinomas from colorectal cancer treated with peritonectomy and intra-abdominal chemohyperthermia: a S.I.T.I.L.O. multicentric study. *In Vivo* 2006; **20**: 747–750.
- Glehen O, Cotte E, Schreiber V, Sayag-Beaujard AC, Vignal J, Gilly FN. Intraperitoneal chemohyperthermia and attempted cytoreductive surgery in patients with peritoneal carcinomatosis of colorectal origin. *Br J Surg* 2004; **91**: 747–754.
- Shen P, Hawksworth J, Lovato J, Loggie BW, Geisinger KR, Fleming RA *et al.* Cytoreductive surgery and intraperitoneal hyperthermic chemotherapy with mitomycin C for peritoneal carcinomatosis from nonappendiceal colorectal carcinoma. *Ann Surg Oncol* 2004; **11**: 178–186.
- Vaira M, Cioppa T, D'Amico S, de Marco G, D'Alessandro M, Fiorentini G *et al.* Treatment of peritoneal carcinomatosis from colonic cancer by cytoreduction, peritonectomy and hyperthermic intraperitoneal chemotherapy (HIPEC). Experience of ten years. *In Vivo* 2010; **24**: 79–84.
- Frøysnes IS, Larsen SG, Spasojevic M, Dueland S, Flatmark K. Complete cytoreductive surgery and hyperthermic intraperitoneal chemotherapy for colorectal peritoneal metastasis in Norway: prognostic factors and oncologic outcome in a national patient cohort. *J Surg Oncol* 2016; **114**: 222–227.
- Desantis M, Bernard JL, Casanova V, Cegarra-Escolano M, Benizri E, Rahili AM *et al.* Morbidity, mortality, and oncological outcomes of 401 consecutive cytoreductive procedures with hyperthermic intraperitoneal chemotherapy (HIPEC). *Langenbecks Arch Surg* 2015; **400**: 37–48.
- Simkens GA, van Oudheusden TR, Luyer MD, Nienhuijs SW, Nieuwenhuijzen GA, Rutten HJ *et al.* Predictors of

- severe morbidity after cytoreductive surgery and hyperthermic intraperitoneal chemotherapy for patients with colorectal peritoneal carcinomatosis. *Ann Surg Oncol* 2016; **23**: 833–841.
- 23 Simkens GA, van Oudheusden TR, Braam HJ, Luyer MD, Wiezer MJ, van Ramshorst B *et al*. Treatment-related mortality after cytoreductive surgery and HIPEC in patients with colorectal peritoneal carcinomatosis is underestimated by conventional parameters. *Ann Surg Oncol* 2016; **23**: 99–105.
 - 24 Moher D, Liberati A, Tetzlaff J, Altman DG; PRISMA Group. Preferred reporting items for systematic reviews and meta-analyses: the PRISMA statement. *J Clin Epidemiol* 2009; **62**: 1006–1012.
 - 25 Tierney JF, Stewart LA, Ghersi D, Burdett S, Sydes MR. Practical methods for incorporating summary time-to-event data into meta-analysis. *Trials* 2007; **8**: 16.
 - 26 Guyot P, Ades AE, Ouwens MJ, Welton NJ. Enhanced secondary analysis of survival data: reconstructing the data from published Kaplan–Meier survival curves. *BMC Med Res Methodol* 2012; **12**: 9.
 - 27 Hayden JA, van der Windt DA, Cartwright JL, Côté P, Bombardier C. Assessing bias in studies of prognostic factors. *Ann Intern Med* 2013; **158**: 280–286.
 - 28 DerSimonian R, Laird N. Meta-analysis in clinical trials. *Control Clin Trials* 1986; **7**: 177–188.
 - 29 Int'Hout J, Ioannidis JP, Rovers MM, Goeman JJ. Plea for routinely presenting prediction intervals in meta-analysis. *BMJ Open* 2016; **6**: e010247.
 - 30 Higgins JP, Thompson SG, Deeks JJ, Altman DG. Measuring inconsistency in meta-analyses. *BMJ* 2003; **327**: 557–560.
 - 31 Baratti D, Kusamura S, Iusco D, Bonomi S, Grassi A, Virzi S *et al*. Postoperative complications after cytoreductive surgery and hyperthermic intraperitoneal chemotherapy affect long-term outcome of patients with peritoneal metastases from colorectal cancer: a two-center study of 101 patients. *Dis Colon Rectum* 2014; **57**: 858–868.
 - 32 Benizri EI, Bernard JL, Rahili A, Benchimol D, Bereder JM. Small bowel involvement is a prognostic factor in colorectal carcinomatosis treated with complete cytoreductive surgery plus hyperthermic intraperitoneal chemotherapy. *World J Surg Oncol* 2012; **10**: 56.
 - 33 da Silva RG, Sugarbaker PH. Analysis of prognostic factors in seventy patients having a complete cytoreduction plus perioperative intraperitoneal chemotherapy for carcinomatosis from colorectal cancer. *J Am Coll Surg* 2006; **203**: 878–886.
 - 34 Duraj FF, Cashin PH. Cytoreductive surgery and intraperitoneal chemotherapy for colorectal peritoneal and hepatic metastases: a case–control study. *J Gastrointest Oncol* 2013; **4**: 388–396.
 - 35 Elias D, Gilly F, Boutitie F, Quenet F, Bereder JM, Mansvelt B *et al*. Peritoneal colorectal carcinomatosis treated with surgery and perioperative intraperitoneal chemotherapy: retrospective analysis of 523 patients from a multicentric French study. *J Clin Oncol* 2010; **28**: 63–68.
 - 36 Elias D, Borget I, Farron M, Dromain C, Ducreux M, Goéré D *et al*. Prognostic significance of visible cardiophrenic angle lymph nodes in the presence of peritoneal metastases from colorectal cancers. *Eur J Surg Oncol* 2013; **39**: 1214–1218.
 - 37 Elias D, Mariani A, Cloutier AS, Blot F, Goéré D, Dumont F *et al*. Modified selection criteria for complete cytoreductive surgery plus HIPEC based on peritoneal cancer index and small bowel involvement for peritoneal carcinomatosis of colorectal origin. *Eur J Surg Oncol* 2014; **40**: 1467–1473.
 - 38 Faron M, Macovei R, Goéré D, Honoré C, Benhaim L, Elias D. Linear relationship of peritoneal cancer index and survival in patients with peritoneal metastases from colorectal cancer. *Ann Surg Oncol* 2016; **23**: 114–119.
 - 39 Franko J, Gusani NJ, Holtzman MP, Ahrendt SA, Jones HL, Zeh HJ III *et al*. Multivisceral resection does not affect morbidity and survival after cytoreductive surgery and chemoperfusion for carcinomatosis from colorectal cancer. *Ann Surg Oncol* 2008; **15**: 3065–3072.
 - 40 Huang CQ, Yang XJ, Yu Y, Wu HT, Liu Y, Yonemura Y *et al*. Cytoreductive surgery plus hyperthermic intraperitoneal chemotherapy improves survival for patients with peritoneal carcinomatosis from colorectal cancer: a phase II study from a Chinese center. *PLoS One* 2014; **9**: e108509.
 - 41 Huang Y, Alzahrani NA, Chua TC, Liauw W, Morris DL. Impacts of peritoneal cancer index on the survival outcomes of patients with colorectal peritoneal carcinomatosis. *Int J Surg* 2016; **32**: 65–70.
 - 42 Ithemelandu C, Sugarbaker PH. Management for peritoneal metastasis of colonic origin: role of cytoreductive surgery and perioperative intraperitoneal chemotherapy: a single institution's experience during two decades. *Ann Surg Oncol* 2017; **24**: 898–905.
 - 43 Lorimier G, Linot B, Paillocher N, Dupoirion D, Verrière V, Wernert R *et al*. Curative cytoreductive surgery followed by hyperthermic intraperitoneal chemotherapy in patients with peritoneal carcinomatosis and synchronous resectable liver metastases arising from colorectal cancer. *Eur J Surg Oncol* 2017; **43**: 150–158.
 - 44 Maggiori L, Goéré D, Viana B, Tzanis D, Dumont F, Honoré C *et al*. Should patients with peritoneal carcinomatosis of colorectal origin with synchronous liver metastases be treated with a curative intent? A case–control study. *Ann Surg* 2013; **258**: 116–121.
 - 45 Ng JL, Ong WS, Chia CS, Tan GH, Soo KC, Teo MC. Prognostic relevance of the peritoneal surface disease severity score compared to the peritoneal cancer index for colorectal peritoneal carcinomatosis. *Int J Surg Oncol* 2016; **2016**: 2495131.
 - 46 Simkens GA, Razenberg LG, Lemmens VE, Rutten HJ, Creemers GJ, de Hingh IH. Histological subtype and systemic metastases strongly influence treatment and survival in patients with synchronous colorectal peritoneal metastases. *Eur J Surg Oncol* 2016; **42**: 794–800.

- 47 Simkens GA, van Oudheusden TR, Braam HJ, Wiezer MJ, Nienhuijs SW, Rutten HJ *et al.* Cytoreductive surgery and HIPEC offers similar outcomes in patients with rectal peritoneal metastases compared to colon cancer patients: a matched case control study. *J Surg Oncol* 2016; **113**: 548–553.
- 48 Sluiter NR, de Cuba EM, Kwakman R, Meijerink WJ, Delis-van Diemen PM, Coupé VM *et al.* Versican and vascular endothelial growth factor expression levels in peritoneal metastases from colorectal cancer are associated with survival after cytoreductive surgery and hyperthermic intraperitoneal chemotherapy. *Clin Exp Metastasis* 2016; **33**: 297–307.
- 49 Teo MC, Ching Tan GH, Lim C, Chia CS, Tham CK, Soo KC. Colorectal peritoneal carcinomatosis treated with cytoreductive surgery and hyperthermic intraperitoneal chemotherapy: the experience of a tertiary Asian center. *Asian J Surg* 2015; **38**: 65–73.
- 50 Ung L, Chua TC, David LM. Peritoneal metastases of lower gastrointestinal tract origin: a comparative study of patient outcomes following cytoreduction and intraperitoneal chemotherapy. *J Cancer Res Clin Oncol* 2013; **139**: 1899–1908.
- 51 Winer J, Zenati M, Ramalingam L, Jones H, Zureikat A, Holtzman M *et al.* Impact of aggressive histology and location of primary tumor on the efficacy of surgical therapy for peritoneal carcinomatosis of colorectal origin. *Ann Surg Oncol* 2014; **21**: 1456–1462.
- 52 Varban O, Levine EA, Stewart JH, McCoy TP, Shen P. Outcomes associated with cytoreductive surgery and intraperitoneal hyperthermic chemotherapy in colorectal cancer patients with peritoneal surface disease and hepatic metastases. *Cancer* 2009; **115**: 3427–3436.
- 53 Votanopoulos KI, Swett K, Blackham AU, Ihemelandu C, Shen P, Stewart JH *et al.* Cytoreductive surgery with hyperthermic intraperitoneal chemotherapy in peritoneal carcinomatosis from rectal cancer. *Ann Surg Oncol* 2013; **20**: 1088–1092.
- 54 Rivard JD, McConnell YJ, Temple WJ, Mack LA. Cytoreduction and heated intraperitoneal chemotherapy for colorectal cancer: are we excluding patients who may benefit? *J Surg Oncol* 2014; **109**: 104–109.
- 55 Füzün M, Sökmen S, Terzi C, Canda AE. Cytoreductive approach to peritoneal carcinomatosis originated from colorectal cancer: Turkish experience. *Acta Chir Jugosl* 2006; **53**: 17–21.
- 56 Chen HS, Sheen-Chen SM. Obstruction and perforation in colorectal adenocarcinoma: an analysis of prognosis and current trends. *Surgery* 2000; **127**: 370–376.
- 57 Dohan A, Hoeffel C, Soyer P, Jannot AS, Valette PJ, Thivolet A *et al.* Evaluation of the peritoneal carcinomatosis index with CT and MRI. *Br J Surg* 2017; **104**: 1244–1249.
- 58 Flicek K, Ashfaq A, Johnson CD, Menias C, Bagaria S, Wasif N. Correlation of radiologic with surgical peritoneal cancer index scores in patients with pseudomyxoma peritonei and peritoneal carcinomatosis: how well can we predict resectability? *J Gastrointest Surg* 2016; **20**: 307–312.
- 59 Iversen LH, Rasmussen PC, Laurberg S. Value of laparoscopy before cytoreductive surgery and hyperthermic intraperitoneal chemotherapy for peritoneal carcinomatosis. *Br J Surg* 2013; **100**: 285–292.
- 60 Office for National Statistics. *Cancer Registration Statistics, England: 2014*. <https://cy.ons.gov.uk/releases/cancerregistrationstatisticsengland2014> [accessed 3 May 2019].
- 61 Kwakman R, Schrama AM, van Olmen JP, Otten RH, de Lange-de Klerk ES, de Cuba EM *et al.* Clinicopathological parameters in patient selection for cytoreductive surgery and hyperthermic intraperitoneal chemotherapy for colorectal cancer metastases: a meta-analysis. *Ann Surg* 2016; **263**: 1102–1111.
- 62 Chua TC, Yan TD, Ng KM, Zhao J, Morris DL. Significance of lymph node metastasis in patients with colorectal cancer peritoneal carcinomatosis. *World J Surg* 2009; **33**: 1488–1494.
- 63 Elias D, Glehen O, Pocard M, Quenet F, Goéré D, Arvieux C *et al.*; Association Française de Chirurgie. A comparative study of complete cytoreductive surgery plus intraperitoneal chemotherapy to treat peritoneal dissemination from colon, rectum, small bowel, and nonpseudomyxoma appendix. *Ann Surg* 2010; **251**: 896–901.
- 64 Baumgartner JM, Tobin L, Heavey SF, Kelly KJ, Roeland EJ, Lowy AM. Predictors of progression in high-grade appendiceal or colorectal peritoneal carcinomatosis after cytoreductive surgery and hyperthermic intraperitoneal chemotherapy. *Ann Surg Oncol* 2015; **22**: 1716–1721.
- 65 Schneider MA, Eden J, Pache B, Laminger F, Lopez-Lopez V, Steffen T *et al.* Mutations of RAS/RAF proto-oncogenes impair survival after cytoreductive surgery and PEC for peritoneal metastasis of colorectal origin. *Ann Surg* 2018; **268**: 845–853.

Supporting information

Additional supporting information can be found online in the Supporting Information section at the end of the article.