

Differences in the prognosis of gastric cancer patients of different sexes and races and the molecular mechanisms involved

HUAFU LI^{1,2*}, CHUNMING WANG^{1,2*}, ZHEWEI WEI², WEI CHEN², ZICONG GUO¹,
YULONG HE^{1,2} and CHANGHUA ZHANG^{1,2}

¹Digestive Medicine Center, The Seventh Affiliated Hospital of Sun Yat-Sen University, Shenzhen, Guangdong 518107; ²Department of Gastrointestinopancreatic Surgery, The First Affiliated Hospital of Sun Yat-Sen University, Guangzhou, Guangdong 510080, P.R. China

Received June 13, 2019; Accepted September 4, 2019

DOI: 10.3892/ijo.2019.4885

Abstract. To evaluate the prognostic and molecular mechanisms of sex and racial differences in gastric cancer, data from two large centers were used to retrospectively analyze the survival of gastric cancer patients with regard to sex and racial differences. In examining the molecular mechanism of sex in gastric cancer patients of different races, data from The Cancer Genome Atlas database were used to analyze differentially expressed genes (DEGs), and Gene Ontology (GO) enrichment and DNA methylation analyses were performed. Among White gastric cancer patients, it was found that the survival prognosis for females was better than that for males; conversely, among Chinese patients, males had a better prognosis. For African Americans, sex may have an impact on gastric cancer, but this relationship was unclear. The core DEGs between the different sexes included glycogenin 2 pseudogene 1, ribosomal protein S4 Y-linked 1, taxilin- γ and eukaryotic translation initiation factor 1A X-linked among White patients, and GO enrichment analysis revealed that these genes act mainly through RNA binding and transcription pathways. Among Black patients, core DEGs included DnaJ heat shock protein family (Hsp40) member C5, histone deacetylase 10, neogenin 1 and SMG5 nonsense mediated mRNA decay factor, which are mainly related to pathways of cellular structural changes based on GO

enrichment analysis. For Asian patients, core DEGs included zinc finger protein Y-linked, thymosin β 4 Y-linked, zinc finger protein 787 and ubiquitously transcribed tetratricopeptide repeat containing, Y-linked, participating in cell surface receptor-associated signal transduction and G-protein coupled receptor protein signaling pathways, according to GO. The expression of different core genes and differences in pathways are likely to be the main causes affecting the variation observed among gastric cancer patients of different races and sexes.

Introduction

Gastric cancer is the third leading cause of tumor-related death, killing >730,000 people a year worldwide (1). However, the incidence of gastric cancer ranks only fifth globally, reaching 1,000,000 new cases/year (2). Notably, there are differences in the incidence of gastric cancer in different regions and races. In the United States, the incidence of gastric cancer in White American patients is low, with 25,000 new cases of gastric cancer each year, but it causes 10,700 deaths/year (3). Moreover, 75% of White American patients with gastric cancer have progressive disease, and the 5-year survival rate is only 30.4% (3). For African American patients, the incidence rate for gastric cancer is 11.8 (95% CI, 10.3-13.2) per 100,000 person-years (3). In addition, >70% of new cases of gastric cancer occur in developing countries, with ~50% of cases in eastern Asia, mainly in China, and the occurrence and mortality of gastric cancer in China accounts for 42.6 and 45.0% of the worldwide total, respectively (4). China ranks fifth in gastric cancer incidence and sixth in mortality in the world among 183 countries (4). Overall, there are notable sex differences in the occurrence of gastric cancer, with a previous study indicating that gastric cancer occurs significantly more frequently in male patients than in female patients, with a ratio of 2:1 (5). However, the impact of sex differences on gastric cancer is not clear, nor is it clear whether sex differences occur in gastric cancer patients of different races. Overall, research in this area is still lacking, and further studies are needed to analyze such differences. Clarification of the factors that lead to sex and ethnic differences in gastric cancer may offer new insight into the key pathways involved.

Correspondence to: Professor Changhua Zhang, Digestive Medicine Center, The Seventh Affiliated Hospital of Sun Yat-Sen University, 628 Zhenyuan Road, Guangming, Shenzhen, Guangdong 518107, P.R. China

E-mail: zhchanghsyuedu@163.com

Professor Yulong He, Department of Gastrointestinopancreatic Surgery, The First Affiliated Hospital of Sun Yat-Sen University, 58 Zhongshan 2nd Road, Guangzhou, Guangdong 510080, P.R. China
E-mail: heyulong@mail.sysu.edu.cn

*Contributed equally

Key words: sex, race, gastric cancer, differentially expressed genes, DNA methylation

To obtain survival and tumor-related data from gastric cancer patients of different ethnic backgrounds, data from two large centers, the Gastric Cancer Research of Sun Yat-Sen University and the Surveillance Epidemiology and End Results (SEER) databases, were utilized. The SEER database is part of the National Cancer Institute and contains records of the pathogenesis, treatment, pathology and prognosis of millions of patients in the United States from 1973 onwards (6). In addition to analyzing differences in patient survival and prognosis, mRNA and DNA methylation data from gastric cancer tissue samples were obtained from The Cancer Genome Atlas (TCGA) database to identify relevant molecular mechanisms affecting sex differences among different races.

Materials and methods

Study subjects. During the period 1973-2013, 150,264 patients with gastric cancer were registered in the SEER database. In the present study, patients with gastric cancer and complete information were included as the study subjects. Patients with no pathological diagnosis ($n=526$), patients without pathological staging ($n=21,646$), patients with tumors at the esophagogastric junction ($n=849$), patients with neuroendocrine tumors ($n=604$), patients with a rare pathological type ($n=7,513$), patients with unknown surgical status ($n=4,683$), patients with unknown radiotherapy ($n=2,664$) and patients with unknown ethnicity or ethnic origin ($n=21,626$) were excluded. Ultimately, 90,153 patients with gastric cancer were included. Among them, there were 76,942 White patients and 13,211 Black patients, with 49,614 males and 27,328 females in the former and 7,985 males and 5,226 females in the latter. The data obtained from the SEER database included patient demographics, primary tumor location, tumor morphology, diagnosis phase, first course of treatment and tracked patient follow-up (<https://seer.cancer.gov/>).

The Center for Gastric Cancer Research of Sun Yat-Sen University collected follow-up data for patients with gastric cancer between 1994 and 2017, including general demographic data, location of primary tumor, family history, Borrmann classification, surgical status and tumor characteristics. The present study included 3,113 patients with gastric cancer who were enrolled in the Center for Gastric Cancer Research at Sun Yat-Sen University between 1994 and 2017, and had complete follow-up information. Patients with no pathological diagnosis ($n=201$), patients without pathological staging ($n=59$), patients with rare pathological types ($n=34$) and patients with unknown surgical status ($n=39$) were excluded (2,780 patients; Fig. 1). In the Asian population, there were 1,845 male patients and 935 female patients.

TCGA contained information for 396 patients with gastric cancer. Patients with unknown ethnicities were excluded ($n=55$), leading to a total of 341 patients, including 256 White patients, 11 Black patients and 74 Asian patients.

Clinicopathological parameters and ethics statement. Because the American Joint Committee on Cancer (AJCC) staging system was not used before 2004, patients in the SEER database before 2004 were mainly classified according to SEER staging (7). SEER staging includes localized, regional and distant classifications. For patients after 2004, TNM staging

was performed according to the 2004 AJCC standard (7), and this applied to most of the data from Sun Yat-Sen University Center for Gastric Cancer Research (7). Patients from the Sun Yat-Sen University Center for Gastric Cancer Research before 2004 were reclassified according to their data. Age was divided into categories of ≥ 65 years old and < 65 years old. The diagnosis of gastric cancer was based on the standards of the International Classification of Diseases for Oncology (ICD-O). None of the information obtained from the SEER database contains any identifiers, and all information is public. Due to the retrospective nature of the study, informed consent from the patients was not required. This analysis did not involve interaction with human subjects or the use of personally identifiable information. Prior to analysis, the patient records/information was anonymized and deidentified, and these methods were performed in accordance with the study protocol approved by the ethics committee. The Ethics Committee of the First Affiliated Hospital of Sun Yat-sen University approved the use of the aforementioned databases in the present study.

Screening of differentially expressed genes (DEGs). The RNA-Seq by Expectation Maximization method was used to normalize the level 3 transcriptome data of the dataset, and all gene expression values were logarithmically transformed. Approximate data were normally distributed after quantile normalization (8). In the present study, the R program package limma v3.28.14 (<https://www.bioconductor.org/packages/devel/bioc/vignettes/limma/inst/doc/users-guide.pdf>) was used to analyze gene expression data for male and female patient of different ethnicities, and mRNAs satisfying $P < 0.01$, false discovery rate (FDR) < 0.01 , and \log_2 fold change (FC) > 2 were further investigated, where $P < 0.05$ indicates that the hypothesis test was statistically significant and FDR is a control index for the hypothesis test error rate. As an evaluation index of the selected differential genes, the number of false rejections was proportional to the number of rejected null hypotheses. FC is generally used to describe the degree of change from an initial to a final value. In the present study, the ratio of the tumor tissue gene expression value to the normal tissue gene expression value, also called the difference multiple, was used. Heat maps of the differential genes were constructed in R (<https://cran.r-project.org/web/packages/pheatmap/pheatmap.pdf>) for easy visual comparison.

Preprocessing of DNA methylation chip data. Whole-genome DNA methylation analysis of the data set was performed using the Illumina Infinium Human Methylation 450 Bead Chip method (Illumina, Inc.), and raw data (primary data in TCGA) were processed using the R package minfi version 1.20.0 (9). Subsequent background subtraction, quantile normalization and quality control were performed. A low-quality probe was removed if it met the following criteria: i) An undetectable rate ($P > 0.05$) in $\geq 5\%$ of the total sample; ii) a variance coefficient $< 5\%$; or iii) single-nucleotide polymorphisms (SNPs) located in the detected CpG dinucleotide (10). β -mixture quantile normalization was used for further Type I and II probe correction (11). The DNA methylation data of the validation set were standardized (12), and the methylation and expression data

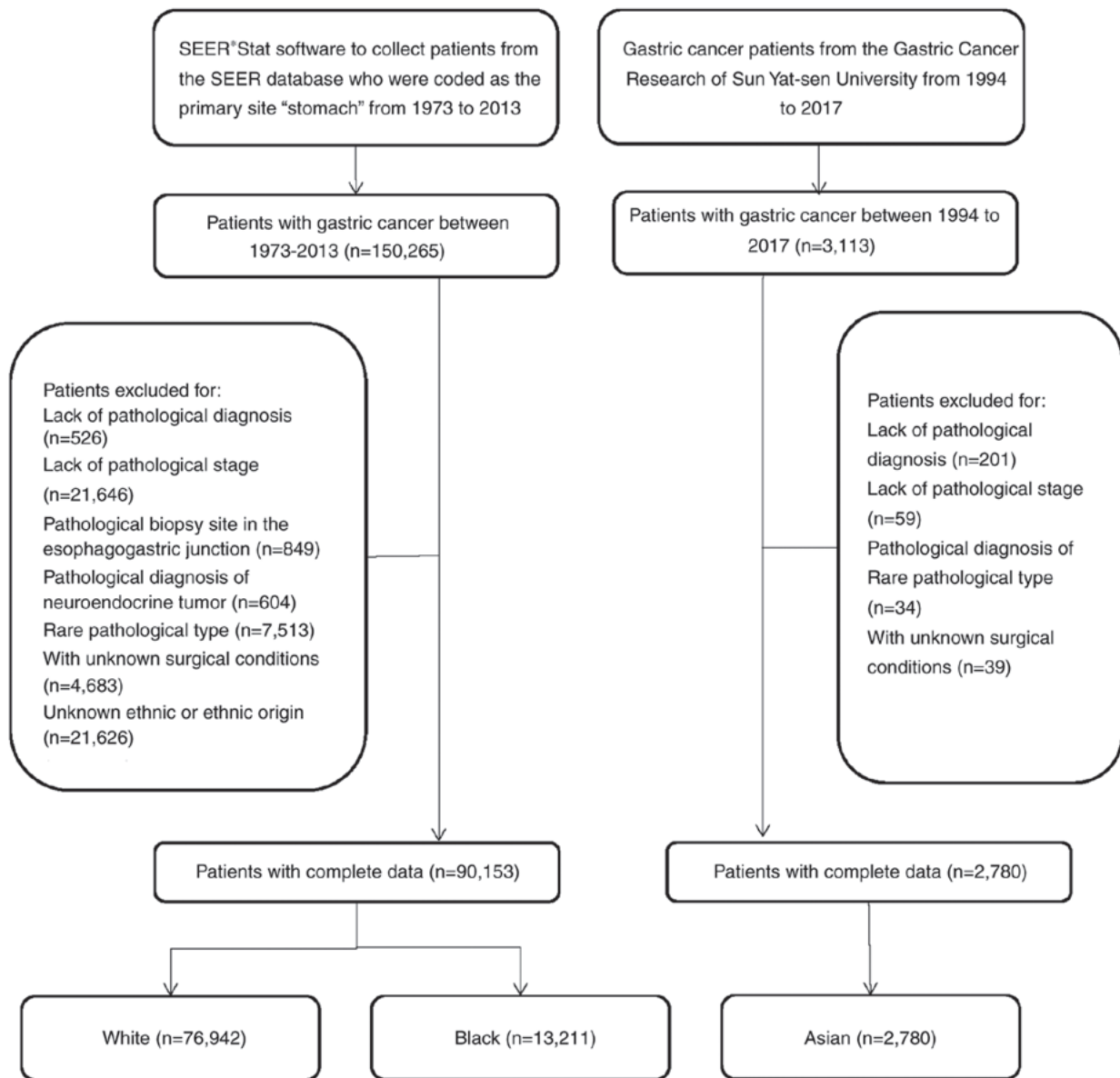


Figure 1. Flowchart of the patient cohorts.

of the core genes were correlated. VanderWeele's mediation analysis was used to investigate whether the prognostic effects of seven DNA methylation sites were mediated by affecting the corresponding mRNA expression (13).

Functional enrichment and pathway analysis of DEGs.

Gene Ontology (GO) analysis was performed on the identified DEGs using the Database for Annotation, Visualization and Integrated Discovery (DAVID 6.8; <https://david.ncifcrf.gov/>), which provides a comprehensive and systematic annotation tool for elucidating the biological significance of genes. GO analysis includes molecular function, biological process and cellular component aspects (14). DEGs detected using DESeq2 software v3.6 (<http://bioconductor.org/packages/stats/bioc/DESeq2/>) were used as enrichment prospects, human database reference genes were used as the enrichment analysis background, $P < 0.05$ was used to screen significantly enriched GO terms, and the number of DEGs in each significantly enriched GO term

was counted (15). The results were visualized using the R Goplot package v1.0.2 (<https://www.rdocumentation.org/packages/GOpplot/versions/1.0.2>).

Kaplan-Meier plotter. The Kaplan Meier plotter (<http://kmplot.com/analysis/>) is a platform that contains gene expression information for 10 tumors and 1,065 clinical survival data points for patients with gastric cancer. This website was used to obtain core gene expression and patient survival prognosis information in an effort to identify the reasons for differences in the survival of gastric cancer patients of different races and sexes (16). To assess the prognostic value of a particular gene, patient samples were divided into two groups based on the median expression level of the gene (high vs. low expression). Core genes were uploaded to the database to obtain a Kaplan-Meier survival map and this map was used to analyze the overall survival (OS) of patients with gastric cancer. The 95% CI, P-value and hazard ratio (HR) were calculated and are displayed on the graphs.

Table I. Demographics according to gender for White and Black gastric cancer patients (1973-2003).

Characteristic No.	White gastric cancer patients						Black gastric cancer patients							
	Unadjusted			Adjusted			Unadjusted			Adjusted				
	M	SD/%	F	SD/%	P-value	M	SD/%	F	SD/%	P-value	M	SD/%	F	SD/%
Age, years														
≥65	28,775	63.86	16,281	36.14	-	9,975	50	9,975	50	38.60	1,188	50	1,188	50
<65	10,184	35.39	4,290	26.35	<0.01	3,028	30.36	3,028	30.36	33.91	437	36.78	437	36.78
Tumor grade	18,591	64.61	11,991	73.65		6,947	69.64	6,947	69.64	66.09	751	63.22	751	63.22
1	1,910	6.64	1,037	6.37	<0.01	510	5.11	510	5.11	7.72	49	4.12	49	4.12
2	8,151	28.33	3,901	23.96		2,461	24.67	2,461	24.67	28.72	334	28.11	334	28.11
3	17,101	59.43	10,371	63.70		6,597	66.14	6,597	66.14	59.22	786	66.16	786	66.16
4	1,613	5.61	972	5.97		407	4.08	407	4.08	4.34	19	1.60	19	1.60
Primary site														
Cardia	10,784	37.48	2,727	16.75	<0.01	2,240	22.46	2,240	22.46	8.08	86	7.24	86	7.24
Fundus	1,257	4.37	799	4.91		445	4.46	445	4.46	4.20	31	2.61	31	2.61
Body	1,662	5.78	1,328	8.16		719	7.21	719	7.21	8.47	72	6.06	72	6.06
Gastric antrum	4,028	14.00	3,523	21.64		2,007	20.12	2,007	20.12	29.50	417	35.10	417	35.10
Pylorus	863	3.00	649	3.99		321	3.22	321	3.22	5.62	53	4.46	53	4.46
Lesser curvature	2,542	8.83	1,676	10.29		971	9.73	971	9.73	12.21	157	13.22	157	13.22
Greater curvature	1,148	3.99	860	5.28		442	4.43	442	4.43	4.45	34	2.86	34	2.86
Overlapping lesion	2,422	8.42	1,737	10.67		987	9.89	987	9.89	9.86	116	9.76	116	9.76
Stomach	4,069	14.14	2,982	18.32		1,843	18.48	1,843	18.48	17.62	222	18.69	222	18.69
Histology														
Adenocarcinoma	20,438	71.03	10,229	62.83	<0.01	7,114	71.32	7,114	71.32	62.99	929	78.20	929	78.20
Signet-ring cell carcinoma	2,852	9.91	2,487	15.28		1,403	14.07	1,403	14.07	14.20	147	12.37	147	12.37
Mucinous carcinoma	1,218	4.23	628	3.86		214	2.15	214	2.15	3.88	13	1.09	13	1.09
Linitis plastica	523	1.82	536	3.29		220	2.21	220	2.21					
Adenocarcinoma intestinal	1,022	3.55	535	3.29		217	2.18	217	2.18	4.16	26	2.19	26	2.19
Other	2,722	9.46	1,866	11.46		807	8.09	807	8.09	14.77	73	6.14	73	6.14
SEER historic stage														
Distant	10,126	35.19	5,253	32.26	<0.01	3,455	34.64	3,455	34.64	31.64	422	35.52	422	35.52
Localized	5,579	19.39	3,566	21.90		2,030	20.35	2,030	20.35	23.13	222	18.69	222	18.69
Regional	10,399	36.14	5,525	33.94		3,456	34.65	3,456	34.65	32.42	404	34.01	404	34.01
Unstaged	2,671	9.28	1,973	12.12		1,034	10.37	1,034	10.37	12.81	120	10.10	120	10.10
Sequence with surgery														
No radiation	25,482	88.56	15,077	92.60	<0.01	9,273	92.96	9,273	92.96	91.71	1,121	94.36	1,121	94.36
Radiation after surgery	690	2.40	149	0.92		74	0.74	74	0.74	7.72	66	5.56	66	5.56
Radiation prior to surgery	2,603	9.05	1,055	6.48		628	6.30	628	6.30	0.57	1	0.08	1	0.08
Gastroectomy														
No	12,089	42.01	6,781	41.65	0.46	4,192	42.03	4,192	42.03	41.96	508	42.76	508	42.76
Yes	16,686	57.99	9,500	58.35		5,783	57.97	5,783	57.97	58.04	680	57.24	680	57.24

Table I. Continued.

Characteristic No.	White gastric cancer patients						Black gastric cancer patients											
	Unadjusted			Adjusted			Unadjusted			Adjusted								
	M	SD/%	F	SD/%	F	P-value	M	SD/%	F	SD/%	F	P-value	M	SD/%	F	SD/%		
	28,775	63.86	16,281	36.14	9,975	-	9,975	50	9,975	50		4,469	61.40	2,810	38.60	1,188	50	
Radiation																		
No	22,022	76.53	13,783	84.66	8,532	<0.01	8,532	85.53	8,532	85.53		3,701	82.81	2,381	84.73	1,074	90.40	90.40
Yes	6,753	23.47	2,498	15.34	1,443		1,443	14.47	1,443	14.47		766	17.14	429	15.27	114	9.60	9.60

M, male; F, female

Statistical analyses. Differences in the clinicopathological parameters between groups were calculated using Pearson's χ^2 test. Survival analysis was performed to calculate cancer-specific survival (CSS) and OS. CSS was defined as the time from the initial diagnosis of primary gastric cancer to the death of a patient due to the tumor. OS was defined as the time from the initial diagnosis of primary gastric cancer to death for any reason. The survival rate was statistically examined using the Kaplan-Meier method, and the differences in survival curves were statistically analyzed using the log-rank test. Propensity analysis is a statistical method used to generate matched patients when comparing long-term survival in observational nonrandomized controlled trials. A one-to-one match of nonpermutation was performed using the nearest neighbor matching method (17). All factors with an impact on survival prognosis were included in the propensity score matching (Figs. S1-S5). The caliper width was 0.05 times the standard deviation of the logit of the propensity score, and deviations of the co-construction variable of >99% were eliminated (17). Spearman's rank correlation (rs) was used to investigate the relationship between methylation and gene expression. Univariate analysis of continuous and binary categorical dependent variables was performed using simple linear analysis and logistic regression analysis. All statistical analyses were performed using SPSS Statistical Software version 20.0 (IBM Corp.) and R version 3.3.0 (The R Foundation; <https://www.r-project.org/foundation/>). Two-tailed $P < 0.05$ was considered to indicate a statistically significant difference.

Results

Clinicopathological characteristics of the study subjects. The total number of subjects was 93,278, among which 2,857 were Asian, 13,223 were Black and 77,198 were White. In the Asian population, there were 1,893 male patients and 964 female patients, and the male to female ratio was 1.96. In the Black population, there were 7,993 male and 5,241 female patients, and the male to female ratio was 1.53. There were 49,766 male and 27,432 female patients with gastric cancer in the White population, with a male to female ratio of 1.81. Compared with White male patients, White female patients had a lower degree of differentiation (59.43 vs. 63.70%), a higher incidence of signet ring cell carcinoma (9.91 vs. 15.28%), a lower incidence of lymph node metastasis (35.35 vs. 28.22%), T1 stages (23.08 vs. 24.37%) and decreased distant metastasis (34.91 vs. 31.32%) (Table I). Moreover, the primary site of the tumor more frequently occurred in the gastric antrum (13.59 vs. 21.62%), and more female patients underwent radical gastrectomy (46.47 vs. 49.45%) (Tables I and II). Among Black patients, the degree of differentiation, the incidence of signet ring cell carcinoma, lymph node metastasis and T stage were similar to those of White patients. However, the primary site of gastric cancer in Black patients was more likely to be associated with the gastric antrum; additionally, the incidence of cancer in the gastric antrum in male and female patients was similar (27.19 vs. 29.80%), and fewer patients underwent radical gastrectomy (51.68 vs. 49.45%) (Table II). A rare pathological type occurred more frequently in female patients than in male patients (12.40 vs. 14.77%) (Tables I and II). Table III

Table II. Demographics according to gender for White and Black GC patients (2004-2013).

Characteristic No.	White GC patients						Black GC patients																																																																																																																																																																																																																																																																																																																																																																																																																																																																																																																																																																																																																																																																																																																							
	Unadjusted			Adjusted			Unadjusted			Adjusted																																																																																																																																																																																																																																																																																																																																																																																																																																																																																																																																																																																																																																																																																																																				
	M	SD/%	F	SD/%	F	P-value	M	SD/%	F	SD/%	F	P-value	M	SD/%	F	SD/%	F																																																																																																																																																																																																																																																																																																																																																																																																																																																																																																																																																																																																																																																																																																													
Age, years																			≥65	20,839	65.24	11,047	34.76	2,704	-	2,704	50	2,704	50	-	3,516	59.24	2,416	40.76	183	50	183	<65	12,871	61.76	7,480	67.71	1,892	<0.01	1,892	69.97	1,892	69.97	0.89	994	28.27	680	28.15	28	15.30	28	Tumor grade																			1	1,017	4.88	600	5.43	105	<0.01	105	3.88	105	3.88	<0.01	175	4.98	129	5.34	4	2.19	4	2	6,025	28.91	2,533	22.93	732		732	27.07	732	27.07		1,079	30.69	653	27.03	58	31.69	58	3	13,327	63.95	7,633	69.10	1,859		1,859	68.75	1,859	68.75		2,189	62.26	1,576	65.23	121	66.12	121	4	524	2.51	281	2.54	8		8	0.30	8	0.30		73	2.08	61	2.52	0	0.00	0	Primary site																			Cardia	9,778	46.92	2,620	23.72	1,087	<0.01	1,087	40.20	1,087	40.20	<0.01	579	16.47	252	10.43	15	8.20	15	Fundus	847	4.06	507	4.59	67		67	2.48	67	2.48		139	3.95	94	3.89	2	1.09	2	Body	1,515	7.27	1,246	11.28	221		221	8.17	221	8.17		365	10.38	289	11.96	25	13.66	25	Gastric antrum	2,833	13.59	2,388	21.62	598		598	22.12	598	22.12		956	27.19	720	29.80	71	38.80	71	Pylorus	448	2.15	352	3.19	32		32	1.18	32	1.18		145	4.12	125	5.17	1	0.55	1	Lesser curvature	1,244	5.97	821	7.43	131		131	4.84	131	4.84		376	10.69	241	9.98	15	8.20	15	Greater curvature	618	2.97	499	4.52	53		53	1.96	53	1.96		141	4.01	100	4.14	2	1.09	2	Overlapping lesion	1,368	6.56	965	8.74	134		134	4.96	134	4.96		309	8.79	218	9.02	10	5.46	10	Stomach	2,242	10.76	1,849	16.74	381		381	14.09	381	14.09		506	14.39	380	15.73	42	22.95	42	Histology																			Adenocarcinoma	12,774	61.30	5,445	49.29	1,842	<0.01	1,842	68.12	1,842	68.12	<0.01	2,006	57.05	1,211	50.12	127	69.40	127	Signet-ring cell carcinoma	3,262	15.65	2,672	24.19	534		534	19.75	534	19.75		502	14.28	502	20.78	20	10.93	20	Mucinous carcinoma	1,338	6.42	834	7.55	54		54	2.00	54	2.00		119	3.38	74	3.06	1	0.55	1	Adenocarcinoma, intestinal type	1,782	8.55	975	8.83	158		158	5.84	158	5.84		438	12.46	283	11.71	8	4.37	8	Other	1,737	8.34	1,121	10.15	116		116	4.29	116	4.29		451	12.83	349	14.45	27	14.75	27	T stage																			T1	4,810	23.08	2,692	24.37	787	<0.01	787	29.11	787	29.11	<0.01	857	24.37	649	26.86	68	37.16	68	T2a	1,585	7.61	868	7.86	177		177	6.55	177	6.55		265	7.54	181	7.49	9	4.92	9	T2b	4,669	22.41	2,174	19.68	527		527	19.49	527	19.49		789	22.44	486	20.12	28	15.30	28	T3	2,803	13.45	1,566	14.18	270		270	9.99	270	9.99		410	11.66	294	12.17	10	5.46	10	T4	2,400	11.52	1,342	12.15	199		199	7.36	199	7.36		499	14.19	324	13.41	10	5.46	10	TX	4,626	22.20	2,405	21.77	744		744	27.51	744	27.51		696	19.80	485	20.07	58	31.69	58	N stage																			N0	8,187	39.29	4,827	43.70	1,325	<0.01	1,325	49.00	1,325	49.00	<0.01	1,464	41.64	4,827	43.70	106	57.92	106	N1	7,366	35.35	3,118	28.22	754		754	27.88	754	27.88		1,142	32.48	3,118	28.22	35	19.13	35	N2	1,660	7.97	898	8.13	120		120	4.44	120	4.44		317	9.02	898	8.13	6	3.28	6	N3	649	3.11	386	3.49	31		31	1.15	31	1.15		121	3.44	386	3.49	0	0.00	0	NX	3,031	14.54	1,818	16.46	474		474	17.53	474	17.53		472	13.42	1,818	16.46	36	19.67	36
≥65	20,839	65.24	11,047	34.76	2,704	-	2,704	50	2,704	50	-	3,516	59.24	2,416	40.76	183	50	183																																																																																																																																																																																																																																																																																																																																																																																																																																																																																																																																																																																																																																																																																																												
<65	12,871	61.76	7,480	67.71	1,892	<0.01	1,892	69.97	1,892	69.97	0.89	994	28.27	680	28.15	28	15.30	28																																																																																																																																																																																																																																																																																																																																																																																																																																																																																																																																																																																																																																																																																																												
Tumor grade																			1	1,017	4.88	600	5.43	105	<0.01	105	3.88	105	3.88	<0.01	175	4.98	129	5.34	4	2.19	4	2	6,025	28.91	2,533	22.93	732		732	27.07	732	27.07		1,079	30.69	653	27.03	58	31.69	58	3	13,327	63.95	7,633	69.10	1,859		1,859	68.75	1,859	68.75		2,189	62.26	1,576	65.23	121	66.12	121	4	524	2.51	281	2.54	8		8	0.30	8	0.30		73	2.08	61	2.52	0	0.00	0	Primary site																			Cardia	9,778	46.92	2,620	23.72	1,087	<0.01	1,087	40.20	1,087	40.20	<0.01	579	16.47	252	10.43	15	8.20	15	Fundus	847	4.06	507	4.59	67		67	2.48	67	2.48		139	3.95	94	3.89	2	1.09	2	Body	1,515	7.27	1,246	11.28	221		221	8.17	221	8.17		365	10.38	289	11.96	25	13.66	25	Gastric antrum	2,833	13.59	2,388	21.62	598		598	22.12	598	22.12		956	27.19	720	29.80	71	38.80	71	Pylorus	448	2.15	352	3.19	32		32	1.18	32	1.18		145	4.12	125	5.17	1	0.55	1	Lesser curvature	1,244	5.97	821	7.43	131		131	4.84	131	4.84		376	10.69	241	9.98	15	8.20	15	Greater curvature	618	2.97	499	4.52	53		53	1.96	53	1.96		141	4.01	100	4.14	2	1.09	2	Overlapping lesion	1,368	6.56	965	8.74	134		134	4.96	134	4.96		309	8.79	218	9.02	10	5.46	10	Stomach	2,242	10.76	1,849	16.74	381		381	14.09	381	14.09		506	14.39	380	15.73	42	22.95	42	Histology																			Adenocarcinoma	12,774	61.30	5,445	49.29	1,842	<0.01	1,842	68.12	1,842	68.12	<0.01	2,006	57.05	1,211	50.12	127	69.40	127	Signet-ring cell carcinoma	3,262	15.65	2,672	24.19	534		534	19.75	534	19.75		502	14.28	502	20.78	20	10.93	20	Mucinous carcinoma	1,338	6.42	834	7.55	54		54	2.00	54	2.00		119	3.38	74	3.06	1	0.55	1	Adenocarcinoma, intestinal type	1,782	8.55	975	8.83	158		158	5.84	158	5.84		438	12.46	283	11.71	8	4.37	8	Other	1,737	8.34	1,121	10.15	116		116	4.29	116	4.29		451	12.83	349	14.45	27	14.75	27	T stage																			T1	4,810	23.08	2,692	24.37	787	<0.01	787	29.11	787	29.11	<0.01	857	24.37	649	26.86	68	37.16	68	T2a	1,585	7.61	868	7.86	177		177	6.55	177	6.55		265	7.54	181	7.49	9	4.92	9	T2b	4,669	22.41	2,174	19.68	527		527	19.49	527	19.49		789	22.44	486	20.12	28	15.30	28	T3	2,803	13.45	1,566	14.18	270		270	9.99	270	9.99		410	11.66	294	12.17	10	5.46	10	T4	2,400	11.52	1,342	12.15	199		199	7.36	199	7.36		499	14.19	324	13.41	10	5.46	10	TX	4,626	22.20	2,405	21.77	744		744	27.51	744	27.51		696	19.80	485	20.07	58	31.69	58	N stage																			N0	8,187	39.29	4,827	43.70	1,325	<0.01	1,325	49.00	1,325	49.00	<0.01	1,464	41.64	4,827	43.70	106	57.92	106	N1	7,366	35.35	3,118	28.22	754		754	27.88	754	27.88		1,142	32.48	3,118	28.22	35	19.13	35	N2	1,660	7.97	898	8.13	120		120	4.44	120	4.44		317	9.02	898	8.13	6	3.28	6	N3	649	3.11	386	3.49	31		31	1.15	31	1.15		121	3.44	386	3.49	0	0.00	0	NX	3,031	14.54	1,818	16.46	474		474	17.53	474	17.53		472	13.42	1,818	16.46	36	19.67	36																																																									
1	1,017	4.88	600	5.43	105	<0.01	105	3.88	105	3.88	<0.01	175	4.98	129	5.34	4	2.19	4																																																																																																																																																																																																																																																																																																																																																																																																																																																																																																																																																																																																																																																																																																												
2	6,025	28.91	2,533	22.93	732		732	27.07	732	27.07		1,079	30.69	653	27.03	58	31.69	58																																																																																																																																																																																																																																																																																																																																																																																																																																																																																																																																																																																																																																																																																																												
3	13,327	63.95	7,633	69.10	1,859		1,859	68.75	1,859	68.75		2,189	62.26	1,576	65.23	121	66.12	121																																																																																																																																																																																																																																																																																																																																																																																																																																																																																																																																																																																																																																																																																																												
4	524	2.51	281	2.54	8		8	0.30	8	0.30		73	2.08	61	2.52	0	0.00	0																																																																																																																																																																																																																																																																																																																																																																																																																																																																																																																																																																																																																																																																																																												
Primary site																			Cardia	9,778	46.92	2,620	23.72	1,087	<0.01	1,087	40.20	1,087	40.20	<0.01	579	16.47	252	10.43	15	8.20	15	Fundus	847	4.06	507	4.59	67		67	2.48	67	2.48		139	3.95	94	3.89	2	1.09	2	Body	1,515	7.27	1,246	11.28	221		221	8.17	221	8.17		365	10.38	289	11.96	25	13.66	25	Gastric antrum	2,833	13.59	2,388	21.62	598		598	22.12	598	22.12		956	27.19	720	29.80	71	38.80	71	Pylorus	448	2.15	352	3.19	32		32	1.18	32	1.18		145	4.12	125	5.17	1	0.55	1	Lesser curvature	1,244	5.97	821	7.43	131		131	4.84	131	4.84		376	10.69	241	9.98	15	8.20	15	Greater curvature	618	2.97	499	4.52	53		53	1.96	53	1.96		141	4.01	100	4.14	2	1.09	2	Overlapping lesion	1,368	6.56	965	8.74	134		134	4.96	134	4.96		309	8.79	218	9.02	10	5.46	10	Stomach	2,242	10.76	1,849	16.74	381		381	14.09	381	14.09		506	14.39	380	15.73	42	22.95	42	Histology																			Adenocarcinoma	12,774	61.30	5,445	49.29	1,842	<0.01	1,842	68.12	1,842	68.12	<0.01	2,006	57.05	1,211	50.12	127	69.40	127	Signet-ring cell carcinoma	3,262	15.65	2,672	24.19	534		534	19.75	534	19.75		502	14.28	502	20.78	20	10.93	20	Mucinous carcinoma	1,338	6.42	834	7.55	54		54	2.00	54	2.00		119	3.38	74	3.06	1	0.55	1	Adenocarcinoma, intestinal type	1,782	8.55	975	8.83	158		158	5.84	158	5.84		438	12.46	283	11.71	8	4.37	8	Other	1,737	8.34	1,121	10.15	116		116	4.29	116	4.29		451	12.83	349	14.45	27	14.75	27	T stage																			T1	4,810	23.08	2,692	24.37	787	<0.01	787	29.11	787	29.11	<0.01	857	24.37	649	26.86	68	37.16	68	T2a	1,585	7.61	868	7.86	177		177	6.55	177	6.55		265	7.54	181	7.49	9	4.92	9	T2b	4,669	22.41	2,174	19.68	527		527	19.49	527	19.49		789	22.44	486	20.12	28	15.30	28	T3	2,803	13.45	1,566	14.18	270		270	9.99	270	9.99		410	11.66	294	12.17	10	5.46	10	T4	2,400	11.52	1,342	12.15	199		199	7.36	199	7.36		499	14.19	324	13.41	10	5.46	10	TX	4,626	22.20	2,405	21.77	744		744	27.51	744	27.51		696	19.80	485	20.07	58	31.69	58	N stage																			N0	8,187	39.29	4,827	43.70	1,325	<0.01	1,325	49.00	1,325	49.00	<0.01	1,464	41.64	4,827	43.70	106	57.92	106	N1	7,366	35.35	3,118	28.22	754		754	27.88	754	27.88		1,142	32.48	3,118	28.22	35	19.13	35	N2	1,660	7.97	898	8.13	120		120	4.44	120	4.44		317	9.02	898	8.13	6	3.28	6	N3	649	3.11	386	3.49	31		31	1.15	31	1.15		121	3.44	386	3.49	0	0.00	0	NX	3,031	14.54	1,818	16.46	474		474	17.53	474	17.53		472	13.42	1,818	16.46	36	19.67	36																																																																																																																																																								
Cardia	9,778	46.92	2,620	23.72	1,087	<0.01	1,087	40.20	1,087	40.20	<0.01	579	16.47	252	10.43	15	8.20	15																																																																																																																																																																																																																																																																																																																																																																																																																																																																																																																																																																																																																																																																																																												
Fundus	847	4.06	507	4.59	67		67	2.48	67	2.48		139	3.95	94	3.89	2	1.09	2																																																																																																																																																																																																																																																																																																																																																																																																																																																																																																																																																																																																																																																																																																												
Body	1,515	7.27	1,246	11.28	221		221	8.17	221	8.17		365	10.38	289	11.96	25	13.66	25																																																																																																																																																																																																																																																																																																																																																																																																																																																																																																																																																																																																																																																																																																												
Gastric antrum	2,833	13.59	2,388	21.62	598		598	22.12	598	22.12		956	27.19	720	29.80	71	38.80	71																																																																																																																																																																																																																																																																																																																																																																																																																																																																																																																																																																																																																																																																																																												
Pylorus	448	2.15	352	3.19	32		32	1.18	32	1.18		145	4.12	125	5.17	1	0.55	1																																																																																																																																																																																																																																																																																																																																																																																																																																																																																																																																																																																																																																																																																																												
Lesser curvature	1,244	5.97	821	7.43	131		131	4.84	131	4.84		376	10.69	241	9.98	15	8.20	15																																																																																																																																																																																																																																																																																																																																																																																																																																																																																																																																																																																																																																																																																																												
Greater curvature	618	2.97	499	4.52	53		53	1.96	53	1.96		141	4.01	100	4.14	2	1.09	2																																																																																																																																																																																																																																																																																																																																																																																																																																																																																																																																																																																																																																																																																																												
Overlapping lesion	1,368	6.56	965	8.74	134		134	4.96	134	4.96		309	8.79	218	9.02	10	5.46	10																																																																																																																																																																																																																																																																																																																																																																																																																																																																																																																																																																																																																																																																																																												
Stomach	2,242	10.76	1,849	16.74	381		381	14.09	381	14.09		506	14.39	380	15.73	42	22.95	42																																																																																																																																																																																																																																																																																																																																																																																																																																																																																																																																																																																																																																																																																																												
Histology																			Adenocarcinoma	12,774	61.30	5,445	49.29	1,842	<0.01	1,842	68.12	1,842	68.12	<0.01	2,006	57.05	1,211	50.12	127	69.40	127	Signet-ring cell carcinoma	3,262	15.65	2,672	24.19	534		534	19.75	534	19.75		502	14.28	502	20.78	20	10.93	20	Mucinous carcinoma	1,338	6.42	834	7.55	54		54	2.00	54	2.00		119	3.38	74	3.06	1	0.55	1	Adenocarcinoma, intestinal type	1,782	8.55	975	8.83	158		158	5.84	158	5.84		438	12.46	283	11.71	8	4.37	8	Other	1,737	8.34	1,121	10.15	116		116	4.29	116	4.29		451	12.83	349	14.45	27	14.75	27	T stage																			T1	4,810	23.08	2,692	24.37	787	<0.01	787	29.11	787	29.11	<0.01	857	24.37	649	26.86	68	37.16	68	T2a	1,585	7.61	868	7.86	177		177	6.55	177	6.55		265	7.54	181	7.49	9	4.92	9	T2b	4,669	22.41	2,174	19.68	527		527	19.49	527	19.49		789	22.44	486	20.12	28	15.30	28	T3	2,803	13.45	1,566	14.18	270		270	9.99	270	9.99		410	11.66	294	12.17	10	5.46	10	T4	2,400	11.52	1,342	12.15	199		199	7.36	199	7.36		499	14.19	324	13.41	10	5.46	10	TX	4,626	22.20	2,405	21.77	744		744	27.51	744	27.51		696	19.80	485	20.07	58	31.69	58	N stage																			N0	8,187	39.29	4,827	43.70	1,325	<0.01	1,325	49.00	1,325	49.00	<0.01	1,464	41.64	4,827	43.70	106	57.92	106	N1	7,366	35.35	3,118	28.22	754		754	27.88	754	27.88		1,142	32.48	3,118	28.22	35	19.13	35	N2	1,660	7.97	898	8.13	120		120	4.44	120	4.44		317	9.02	898	8.13	6	3.28	6	N3	649	3.11	386	3.49	31		31	1.15	31	1.15		121	3.44	386	3.49	0	0.00	0	NX	3,031	14.54	1,818	16.46	474		474	17.53	474	17.53		472	13.42	1,818	16.46	36	19.67	36																																																																																																																																																																																																																																																																																																																																																						
Adenocarcinoma	12,774	61.30	5,445	49.29	1,842	<0.01	1,842	68.12	1,842	68.12	<0.01	2,006	57.05	1,211	50.12	127	69.40	127																																																																																																																																																																																																																																																																																																																																																																																																																																																																																																																																																																																																																																																																																																												
Signet-ring cell carcinoma	3,262	15.65	2,672	24.19	534		534	19.75	534	19.75		502	14.28	502	20.78	20	10.93	20																																																																																																																																																																																																																																																																																																																																																																																																																																																																																																																																																																																																																																																																																																												
Mucinous carcinoma	1,338	6.42	834	7.55	54		54	2.00	54	2.00		119	3.38	74	3.06	1	0.55	1																																																																																																																																																																																																																																																																																																																																																																																																																																																																																																																																																																																																																																																																																																												
Adenocarcinoma, intestinal type	1,782	8.55	975	8.83	158		158	5.84	158	5.84		438	12.46	283	11.71	8	4.37	8																																																																																																																																																																																																																																																																																																																																																																																																																																																																																																																																																																																																																																																																																																												
Other	1,737	8.34	1,121	10.15	116		116	4.29	116	4.29		451	12.83	349	14.45	27	14.75	27																																																																																																																																																																																																																																																																																																																																																																																																																																																																																																																																																																																																																																																																																																												
T stage																			T1	4,810	23.08	2,692	24.37	787	<0.01	787	29.11	787	29.11	<0.01	857	24.37	649	26.86	68	37.16	68	T2a	1,585	7.61	868	7.86	177		177	6.55	177	6.55		265	7.54	181	7.49	9	4.92	9	T2b	4,669	22.41	2,174	19.68	527		527	19.49	527	19.49		789	22.44	486	20.12	28	15.30	28	T3	2,803	13.45	1,566	14.18	270		270	9.99	270	9.99		410	11.66	294	12.17	10	5.46	10	T4	2,400	11.52	1,342	12.15	199		199	7.36	199	7.36		499	14.19	324	13.41	10	5.46	10	TX	4,626	22.20	2,405	21.77	744		744	27.51	744	27.51		696	19.80	485	20.07	58	31.69	58	N stage																			N0	8,187	39.29	4,827	43.70	1,325	<0.01	1,325	49.00	1,325	49.00	<0.01	1,464	41.64	4,827	43.70	106	57.92	106	N1	7,366	35.35	3,118	28.22	754		754	27.88	754	27.88		1,142	32.48	3,118	28.22	35	19.13	35	N2	1,660	7.97	898	8.13	120		120	4.44	120	4.44		317	9.02	898	8.13	6	3.28	6	N3	649	3.11	386	3.49	31		31	1.15	31	1.15		121	3.44	386	3.49	0	0.00	0	NX	3,031	14.54	1,818	16.46	474		474	17.53	474	17.53		472	13.42	1,818	16.46	36	19.67	36																																																																																																																																																																																																																																																																																																																																																																																																																																																																								
T1	4,810	23.08	2,692	24.37	787	<0.01	787	29.11	787	29.11	<0.01	857	24.37	649	26.86	68	37.16	68																																																																																																																																																																																																																																																																																																																																																																																																																																																																																																																																																																																																																																																																																																												
T2a	1,585	7.61	868	7.86	177		177	6.55	177	6.55		265	7.54	181	7.49	9	4.92	9																																																																																																																																																																																																																																																																																																																																																																																																																																																																																																																																																																																																																																																																																																												
T2b	4,669	22.41	2,174	19.68	527		527	19.49	527	19.49		789	22.44	486	20.12	28	15.30	28																																																																																																																																																																																																																																																																																																																																																																																																																																																																																																																																																																																																																																																																																																												
T3	2,803	13.45	1,566	14.18	270		270	9.99	270	9.99		410	11.66	294	12.17	10	5.46	10																																																																																																																																																																																																																																																																																																																																																																																																																																																																																																																																																																																																																																																																																																												
T4	2,400	11.52	1,342	12.15	199		199	7.36	199	7.36		499	14.19	324	13.41	10	5.46	10																																																																																																																																																																																																																																																																																																																																																																																																																																																																																																																																																																																																																																																																																																												
TX	4,626	22.20	2,405	21.77	744		744	27.51	744	27.51		696	19.80	485	20.07	58	31.69	58																																																																																																																																																																																																																																																																																																																																																																																																																																																																																																																																																																																																																																																																																																												
N stage																			N0	8,187	39.29	4,827	43.70	1,325	<0.01	1,325	49.00	1,325	49.00	<0.01	1,464	41.64	4,827	43.70	106	57.92	106	N1	7,366	35.35	3,118	28.22	754		754	27.88	754	27.88		1,142	32.48	3,118	28.22	35	19.13	35	N2	1,660	7.97	898	8.13	120		120	4.44	120	4.44		317	9.02	898	8.13	6	3.28	6	N3	649	3.11	386	3.49	31		31	1.15	31	1.15		121	3.44	386	3.49	0	0.00	0	NX	3,031	14.54	1,818	16.46	474		474	17.53	474	17.53		472	13.42	1,818	16.46	36	19.67	36																																																																																																																																																																																																																																																																																																																																																																																																																																																																																																																																																																																																													
N0	8,187	39.29	4,827	43.70	1,325	<0.01	1,325	49.00	1,325	49.00	<0.01	1,464	41.64	4,827	43.70	106	57.92	106																																																																																																																																																																																																																																																																																																																																																																																																																																																																																																																																																																																																																																																																																																												
N1	7,366	35.35	3,118	28.22	754		754	27.88	754	27.88		1,142	32.48	3,118	28.22	35	19.13	35																																																																																																																																																																																																																																																																																																																																																																																																																																																																																																																																																																																																																																																																																																												
N2	1,660	7.97	898	8.13	120		120	4.44	120	4.44		317	9.02	898	8.13	6	3.28	6																																																																																																																																																																																																																																																																																																																																																																																																																																																																																																																																																																																																																																																																																																												
N3	649	3.11	386	3.49	31		31	1.15	31	1.15		121	3.44	386	3.49	0	0.00	0																																																																																																																																																																																																																																																																																																																																																																																																																																																																																																																																																																																																																																																																																																												
NX	3,031	14.54	1,818	16.46	474		474	17.53	474	17.53		472	13.42	1,818	16.46	36	19.67	36																																																																																																																																																																																																																																																																																																																																																																																																																																																																																																																																																																																																																																																																																																												

Table II. Continued.

Characteristic No.	White GC patients										Black GC patients									
	Unadjusted					Adjusted					Unadjusted					Adjusted				
	M	SD/%	F	SD/%	P-value	M	SD/%	F	SD/%	P-value	M	SD/%	F	SD/%	P-value	M	SD/%	F	SD/%	P-value
20,839	65.24	11,047	34.76	-	2,704	50	2,704	50	-	3,516	59.24	2,416	40.76	-	183	50	183	50	-	
M stage																				
M0	12,327	59.15	6,727	60.89	<0.01	1,698	62.80	1,698	62.80	<0.01	2,091	59.47	6,727	60.89	<0.01	106	57.92	106	57.92	<0.01
M1	7,274	34.91	3,460	31.32		805	29.77	805	29.77		1,218	34.64	3,460	31.32		62	33.88	62	33.88	
MX	1,292	6.20	860	7.78		201	7.43	201	7.43		207	5.89	860	7.78		15	8.20	15	8.20	
Tumor size																				
≤1 cm	11,071	53.13	5,608	50.76	<0.01	1,415	52.33	1,415	52.33	<0.01	1,870	53.19	5,608	50.76	<0.01	88	48.09	88	48.09	<0.01
>1 cm	9,822	47.13	5,439	49.24		1,289	47.67	1,289	47.67		1,646	46.81	5,439	49.24		95	51.91	95	51.91	
Sequence with surgery																				
No radiation	17,489	83.92	9,622	87.10	<0.01	2,406	88.98	2,406	88.98	<0.01	2,997	85.24	9,622	87.10	<0.01	173	94.54	173	94.54	<0.01
Radiation after surgery	2,117	10.16	1,203	10.89		202	7.47	202	7.47		465	13.23	1,203	10.89		9	4.92	9	4.92	
Radiation prior to surgery	1,287	6.18	222	2.01		96	3.55	96	3.55		54	1.54	222	2.01		1	0.55	1	0.55	
Gastrectomy																				
No	11,210	53.79	5,584	50.55	<0.01	1,414	52.29	1,414	52.29	<0.01	1,699	48.32	5,584	50.55	<0.01	83	45.36	83	45.36	<0.01
Yes	9,683	46.47	5,463	49.45		1,290	47.71	1,290	47.71		1,817	51.68	5,463	49.45		100	54.64	100	54.64	
Radiation																				
No	14,062	67.48	8,518	77.11	<0.01	2,173	80.36	2,173	80.36	<0.01	2,616	74.40	8,518	77.11	<0.01	171	93.44	171	93.44	<0.01
Yes	6,831	32.78	2,529	22.89		531	19.64	531	19.64		900	25.60	2,529	22.89		12	6.56	12	6.56	

M, male; F, female.

Table III. Demographics according to gender for Asian GC patient (1994-2017).

Characteristic	Unadjusted					Adjusted				
	M	SD/%	F	SD/%	P-value	M	SD/%	F	SD/%	P-value
No.	1,845	66.37	935	33.63	-	293	50	293	50	-
Age, years										
≥65	1,213	65.75	711	76.04	<0.001	233	79.52	233	79.52	1.000
<65	632	34.25	224	23.96		60	20.48	60	20.48	
Family history										
No	1,670	90.51	852	91.12	0.834	283	96.59	283	96.59	
Yes	168	9.11	83	8.88		10	3.41	10	3.41	
Tumor grade										
1	93	5.04	103	11.02	<0.001	3	1.02	3	1.02	1.000
2	527	28.56	137	14.65		51	17.41	51	17.41	
3	1,149	62.28	667	71.34		223	76.11	223	76.11	
4	76	4.12	28	2.99		16	5.46	16	5.46	
Ascites										
No	1,630	88.35	815	87.17	0.329	289	98.63	289	98.63	1.000
Serous fluid	186	10.08	109	11.66		4	1.37	4	1.37	
Hemorrhagic	29	1.57	11	1.18		0	0.00	0	0.00	
Primary site										
Cardia	630	34.15	227	24.28	<0.001	68	23.21	68	23.21	1.000
Corpus	298	16.15	287	30.70		75	25.60	75	25.60	
Pylorus	759	41.14	402	42.99		150	51.19	150	51.19	
Stomach	58	3.14	19	2.03		0	0.00	0	0.00	
Histology										
Adenocarcinoma	1,413	76.59	688	73.58	<0.001	261	89.08	261	89.08	1.000
Signet-ring cell carcinoma	179	9.70	127	13.58		29	9.90	29	9.90	
Mucinous carcinoma	72	3.90	32	3.42		1	0.34	1	0.34	
Other	181	9.81	88	9.41		2	0.68	2	0.68	
T stage (AJCC, 2004)										
T1	204	11.06	132	14.12	0.137	40	13.65	40	13.65	
T2	237	12.85	119	12.73		25	8.53	25	8.53	
T3	848	45.96	414	44.28		170	58.02	170	58.02	
T4	556	30.14	270	28.88		58	19.80	58	19.80	
N stage (AJCC, 2004)										
N0	414	22.44	212	22.67	0.532	68	23.21	68	23.21	1.000
N1	770	41.73	403	43.10		157	53.58	157	53.58	
N2	645	34.96	316	33.80		68	23.21	68	23.21	
N3	16	0.87	4	0.43		0	0.00	0	0.00	
M stage (AJCC, 2004)										
M0	1,389	75.28	713	76.26	0.492	271	92.49	271	92.49	1.000
M1	419	22.71	209	22.35		22	7.51	22	7.51	
MX	37	2.01	13	1.39		0	0.00	0	0.00	
Borrmann										
Massive type	102	5.53	32	3.42	<0.001	5	1.71	5	1.71	1.000
Localized type	436	23.63	211	22.57		69	23.55	69	23.55	
Infiltrating ulcerative type	1,023	55.45	484	51.76		199	67.92	199	67.92	
Diffuse infiltrative type	168	9.11	140	14.97		14	4.78	14	4.78	1.000
Mixed type	116	6.29	68	7.27		6	2.05	6	2.05	
Gastrectomy										
No	207	11.22	120	12.83	0.213	1	0.34	1	0.34	1.000
Yes	1,638	88.78	815	87.17		292	99.66	292	99.66	

M, male; F, female.

illustrates the clinicopathological features of Asian patients with gastric cancer. The incidence of the primary tumor site in the corpus was higher among females (16.15 vs. 30.70%), as was the incidence of diffuse infiltrative gastric cancer (9.11 vs. 14.97%). The general characteristics of patients with gastric cancer of different ethnic backgrounds showed that the effects of different ethnicities on gastric cancer are varied.

Survival analysis of subgroups according to race and sex. As shown in Figs. 2 and 3, the survival prognosis of female gastric cancer patients was better than that of male patients among Whites. Fig. 2A and B compare the OS and CSS of patients with different gastric cancer types between 1973 and 2003. The survival time of male patients was significantly lower than that of female patients (OS: HR

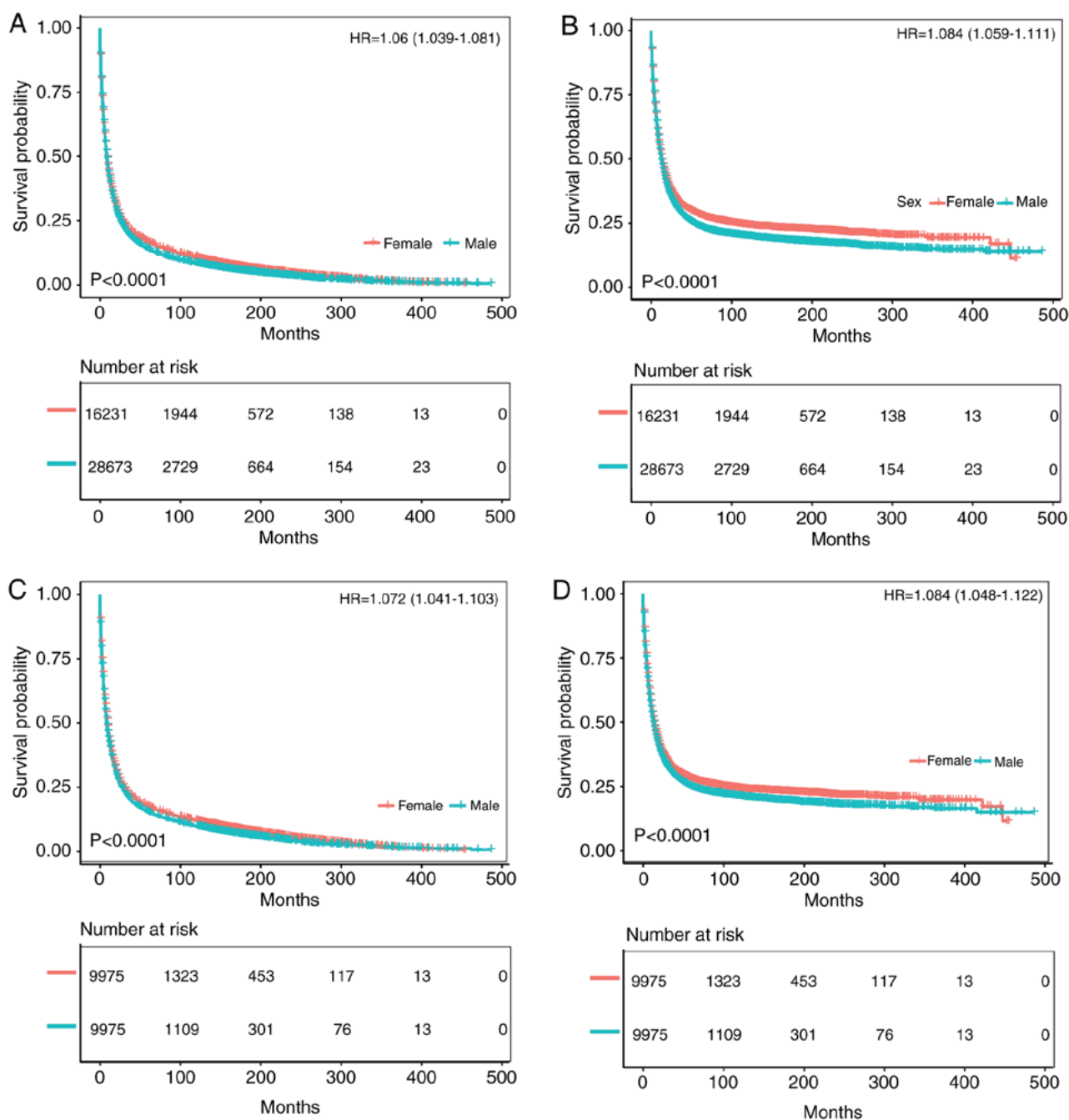


Figure 2. Kaplan-Meier analysis after gastric cancer diagnosis among White patients. The mean survival time of female patients was significantly prolonged compared with that of male patients ($P<0.001$). (A) Kaplan-Meier curve for OS in female patients and male patients from 1973-2003. (B) Kaplan-Meier curve for CSS in female patients and male patients from 1973-2003. (C) Kaplan-Meier curve for OS in female patients and male patients from 1973-2003, adjusted via PSM. (D) Kaplan-Meier curve for CSS in female patients and male patients from 1973-2003, adjusted via PSM. HR, hazard ratio; PSM, propensity score matching; OS, overall survival; CSS, cancer-specific survival.

of death=1.06, 95% CI=1.039-1.081, $P<0.001$; CSS: HR of death=1.084, 95% CI=1.059-1.111, $P<0.001$), which remained after matching (OS: HR of death=1.072, 95% CI=1.041-1.103, $P<0.001$; CSS: HR of death=1.084, 95% CI=1.048-1.122, $P<0.001$) (Fig. 2C and D). Fig. 3A and B compare the OS and CSS of patients with different gastric cancer types between 2004 and 2013, revealing that the survival time of male patients was significantly lower than that of female patients (OS: HR of death=1.066, 95% CI=1.038-1.096, $P<0.001$; CSS: HR of death=1.062, 95% CI=1.027-1.097, $P<0.001$), which again remained after matching (OS: HR of death=1.189,

95% CI=1.115-1.267, $P<0.001$; CSS: HR of death=1.181, 95% CI=1.092-1.276, $P<0.001$) (Fig. 3C and D). Fig. S1A and B displays the trend in HRs for OS and CSS among male and female patients ($P<0.0001$), with significantly better results for the latter.

The survival prognosis for female gastric cancer patients was not greatly different from that of male patients among Black patients (Figs. 4 and 5). Fig. 4A and B compare the OS and CSS of patients with different gastric cancer types between 1973 and 2003, wherein the survival time of male patients was significantly lower than that of female patients

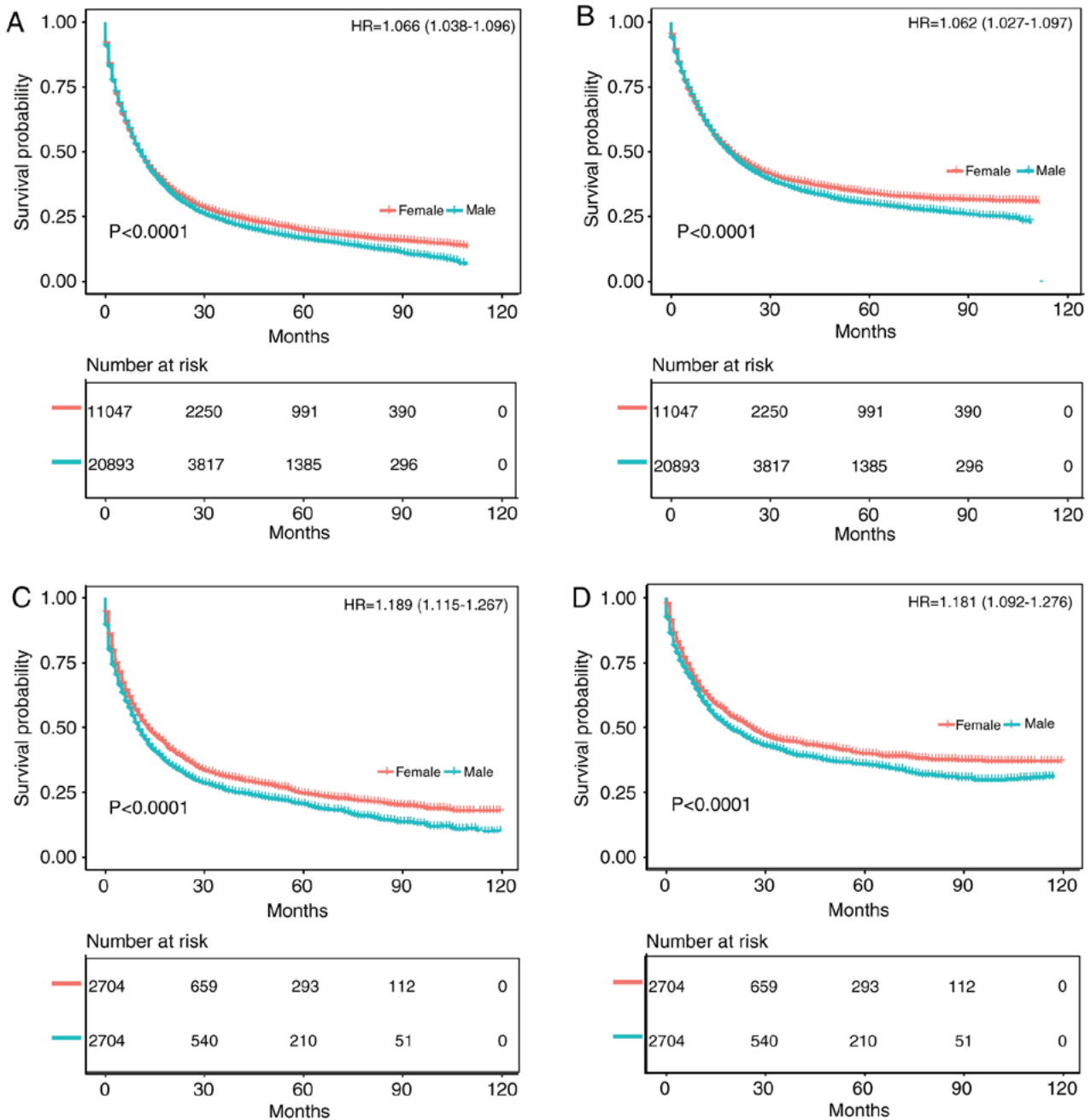


Figure 3. Kaplan-Meier analysis after gastric cancer diagnosis among White patients. The mean survival time of female patients was significantly prolonged compared with that of male patients ($P < 0.001$). (A) Kaplan-Meier curve for OS in female patients and male patients from 2004-2013. (B) Kaplan-Meier curve for CSS in female patients and male patients from 2004-2013. (C) Kaplan-Meier curve for OS in female patients and male patients from 2004-2013, adjusted via PSM. (D) Kaplan-Meier curve for CSS in female patients and male patients from 2004-2013, adjusted via PSM. HR, hazard ratio; PSM, propensity score matching; OS, overall survival; CSS, cancer-specific survival.

(OS: HR of death=1.097, 95% CI=1.045-1.152, $P < 0.001$; CSS: HR of death=1.085, 95% CI=1.022-1.151, $P = 0.0058$). After matching, the OS of male patients was still significantly lower than that of female patients (HR of death=1.182, 95% CI=1.087-1.284, $P < 0.001$), but there was no significant difference in CSS (HR of death=1.059, 95% CI=0.957-1.172, $P = 0.260$) (Fig. 4C and D). Fig. 5A and B compare the OS and CSS of patients with different gastric cancer types between 2004 and 2013. Although the OS of male patients was significantly lower than that of female patients (HR of death=1.135, 95% CI=1.068-1.205, $P < 0.001$), there was no significant difference in CSS (HR of death=1.066, 95% CI=0.992-1.147,

$P = 0.077$). Furthermore, there was no significant difference in survival between the two groups after matching (OS: HR of death=1.15, 95% CI=0.896-1.477, $P = 0.25$; CSS: HR of death=0.914, 95% CI=0.666-1.254, $P = 0.570$) (Fig. 5C and D). Fig. 5C and D illustrates the trend in HRs for OS and CSS among male and female patients, with no significant differences between the groups.

Among Asian patients, the survival prognosis of female gastric cancer patients was worse than that of male patients (Fig. 6). The comparison of the OS and CSS of patients with different gastric cancer types between 1994 and 2017 is shown in Fig. 6A and B. The survival time of female

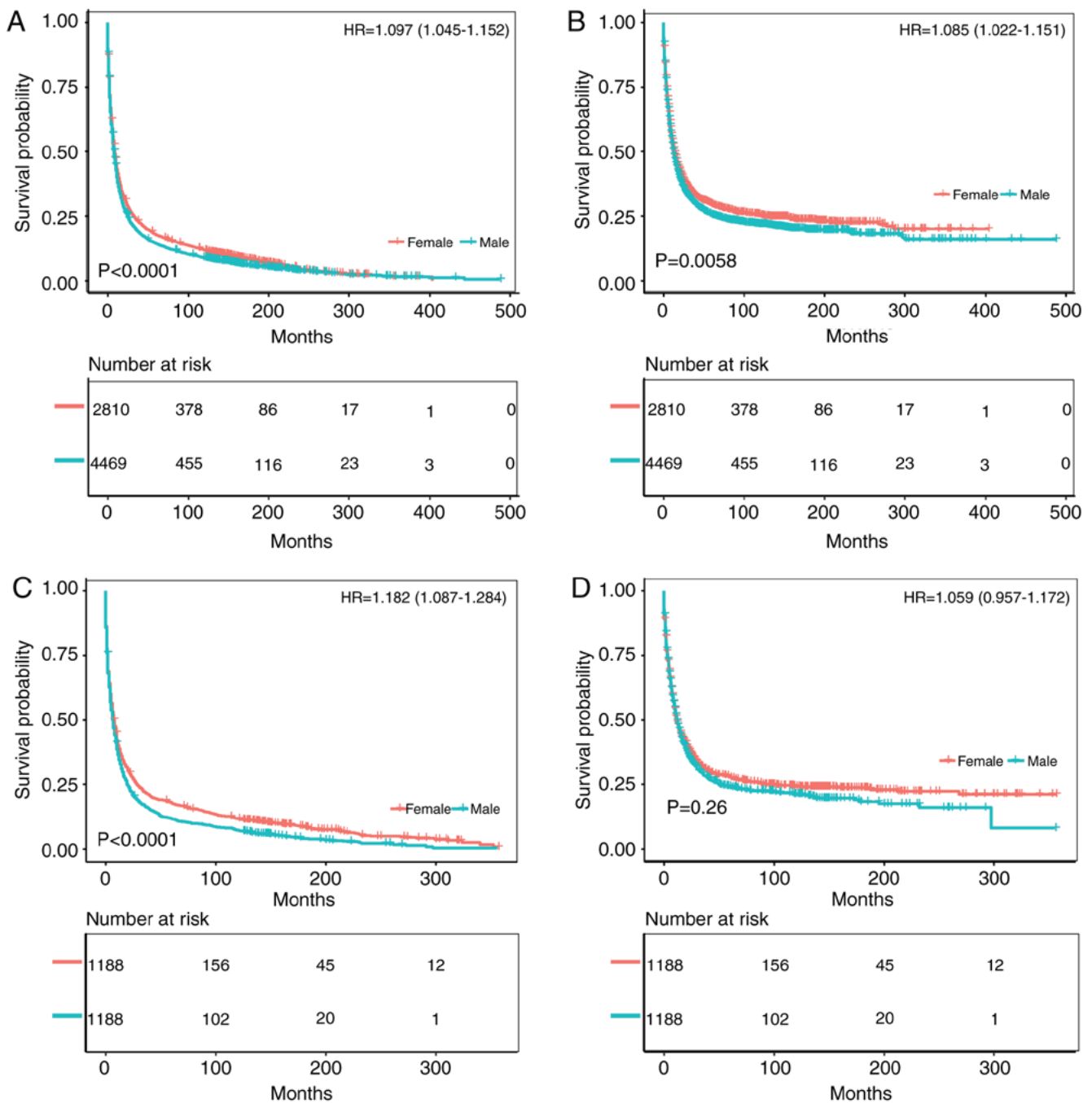


Figure 4. Kaplan-Meier analysis after gastric cancer diagnosis among Black patients. The mean survival time of female patients was significantly prolonged compared with that of male patients ($P < 0.001$). (A) Kaplan-Meier curve for OS in female patients and male patients from 1973-2003. (B) Kaplan-Meier curve for CSS in female patients and male patients from 1973-2003. (C) Kaplan-Meier curve for OS in female patients and male patients from 1973-2003, adjusted via PSM. (D) Kaplan-Meier curve for CSS in female patients and male patients from 1973-2003, adjusted via PSM. HR, hazard ratio; PSM, propensity score matching; OS, overall survival; CSS, cancer-specific survival.

patients was significantly lower than that of male patients (OS: HR of death=1.147, 95% CI=1.032-1.274, $P=0.011$; CSS: HR of death=1.114, 95% CI=1.007-1.233, $P=0.036$), and the survival time of female patients was significantly lower than that of male patients after matching (OS: HR of death=1.342, 95% CI=1.046-1.722, $P=0.021$; CSS: HR of death=1.329, 95% CI=1.042-1.695, $P=0.023$) (Fig. 6C and D). The trend in HRs for OS and CSS among male and female patients is illustrated in Fig. S1E and F ($P < 0.0001$), with significantly better results for men than women.

All 12 clinicopathological factors, including T stage, N stage, M stage, tumor grade, marital status, primary tumor location, pathological type, ethnicity, age group, SEER historic stage, ascites status and Borrmann classification, were significant in the univariate analysis (Figs. S2-S6). Figs. S2 and S3 indicate that for White patients, female sex was an independent protective factor for survival. However, as shown in Figs. S4 and S5, the prognosis of women between 1973 and 2003 was better than that of men among Black patients, whereas sex-related survival was not significant between 2004 and 2013. In Asians,

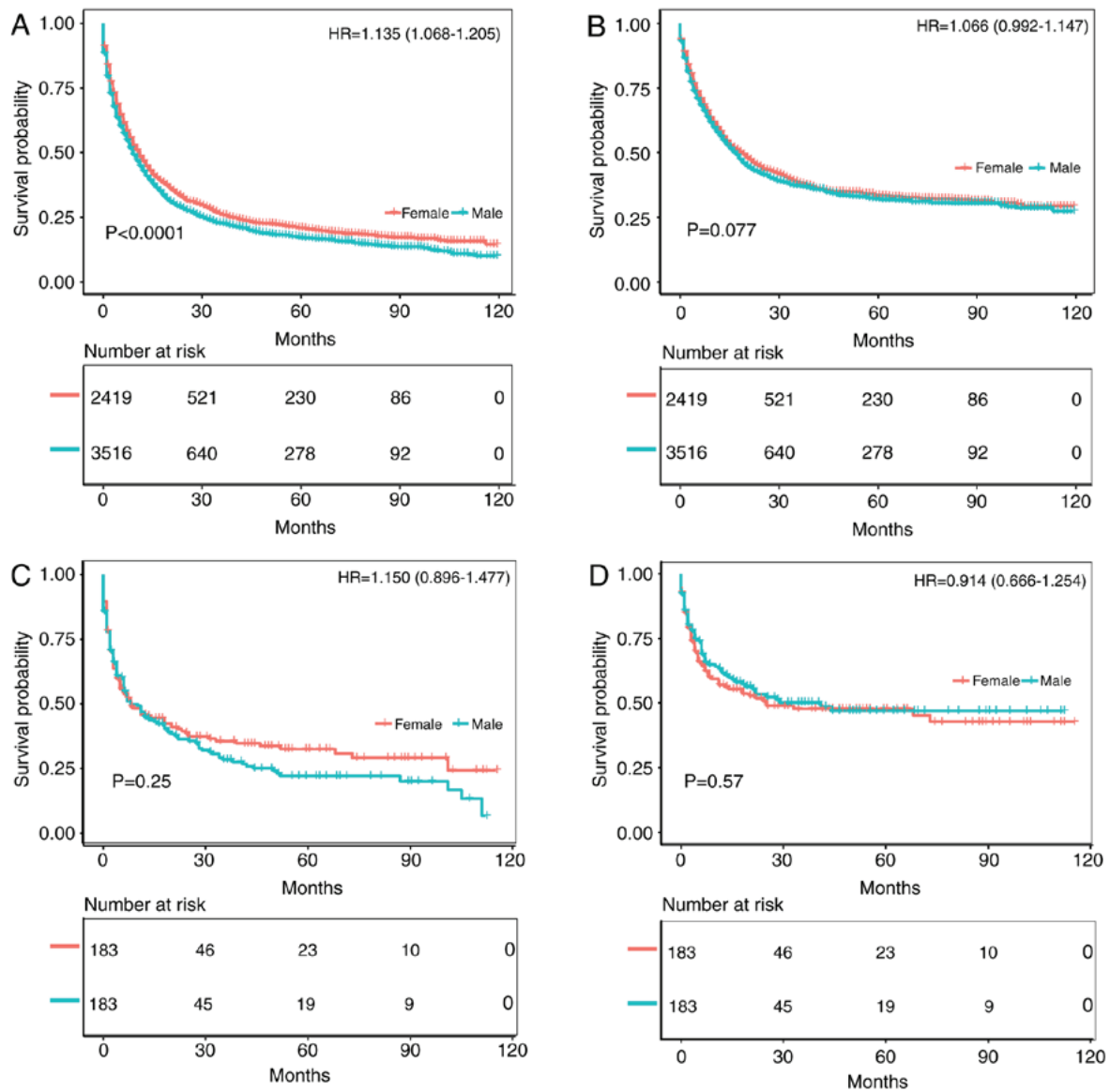


Figure 5. Kaplan-Meier analysis after gastric cancer diagnosis among Black patients. The mean survival time of female patients was significantly prolonged compared with that of male patients ($P < 0.001$). (A) Kaplan-Meier curve for OS in female patients and male patients from 2004-2013. (B) Kaplan-Meier curve for CSS in female patients and male patients from 2004-2013. (C) Kaplan-Meier curve for OS in female patients and male patients from 2004-2013, adjusted via PSM. (D) Kaplan-Meier curve for CSS in female patients and male patients from 2004-2013, adjusted via PSM. HR, hazard ratio; PSM, propensity score matching; OS, overall survival; CSS, cancer-specific survival.

male sex was an independent protective factor for survival in gastric cancer (Fig. S6).

Functional enrichment and pathway analysis of DEGs.

Regarding White patients, the mRNA expression data of 161 male and 95 female gastric cancer tissue samples were summarized after pretreatment and the R package limma was used for differential expression analysis according to the top 50 log₂ FC values. Genes were mapped using heat maps, in which 50 mRNAs were upregulated and 50 mRNAs downregulated. The specific genes are shown in Fig. S7. Among them, gray indicates male, and yellow indicates female. To further investigate the role of differential genes in White patients with gastric cancer, DAVID was used for GO enrichment analysis. According to the results, in addition to enrichment of the sex-differentiation pathway, the DEGs were mainly enriched

in 'RNA binding', 'transcription', 'oxidoreductase activity incorporation of two atoms of oxygen', and 'rRNA binding' (Fig. S8). The mRNA expression data for Black patients were also summarized, comprising 8 male and 3 female gastric cancer tissue samples. The specific genes are shown in Fig. S9. As above, gray indicates male, and yellow indicates female. Based on the GO enrichment analysis, DEGs were mainly enriched in 'cornified envelope', 'endopeptidase inhibitor activity', 'structural molecule activity', 'extracellular region' and 'extracellular space', in addition to enrichment of the sex-differentiation pathway (Fig. S10). Similarly, the mRNA expression data for Asian patients involved 48 male and 26 female gastric cancer tissue samples. The specific genes are shown in Fig. S11, where gray indicates male and yellow female. In addition to enrichment of the sex-differentiation pathway, DEGs were mainly enriched in 'RNA binding',

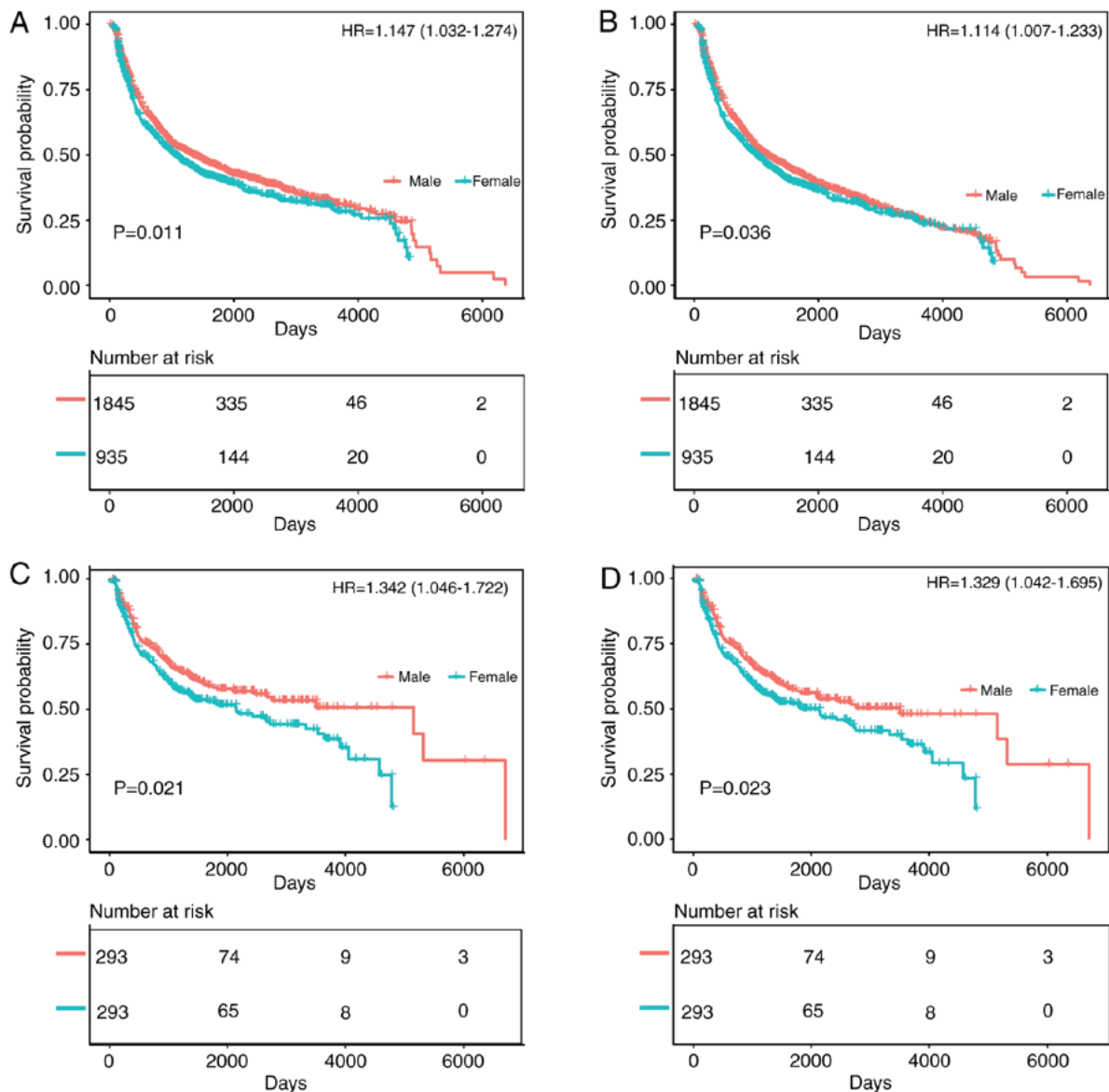


Figure 6. Kaplan-Meier analysis after gastric cancer diagnosis among Asian patients. The mean survival time of male patients was significantly prolonged compared with that of female patients ($P < 0.05$). (A) Kaplan-Meier curve for OS in female patients and male patients from 1994-2017. (B) Kaplan-Meier curve for OS in female patients and male patients from 1994-2017, adjusted via PSM. (D) Kaplan-Meier curve for CSS in female patients and male patients from 1994-2017, adjusted via PSM. HR, hazard ratio; PSM, propensity score matching; OS, overall survival; CSS, cancer-specific survival.

'extracellular region', 'acute-phase response', 'cell surface receptor linked signal transduction' and 'G-protein coupled receptor protein signaling pathway', according to the GO enrichment analysis (Fig. S12).

Relationship between CpG methylation, gene expression and prognosis. Methylation of seven CpG loci and expression of quantitative trait loci were assessed in the gene set. Because promoter hypermethylation plays an important role in the inactivation of cancer-associated genes, there was particular interest in genes with low methylation and high expression levels. In subsequent analyses, these genes may be used to screen candidate diagnostic biomarkers (18). Among White patients, the methylation level of the CpG locus in the promoter and first exon regions was inversely correlated with the expression of corresponding genes, such as glycogenin 2 pseudogene 1

(GYG2P1; $rs=0.216$, $P < 0.05$), ribosomal protein S4 Y-linked 1 (RPS4Y1; $rs=0.515$, $P < 0.05$), taxilin- γ (TXLNG; $rs=0.129$, $P < 0.05$) and eukaryotic translation initiation factor 1A X-linked (EIF1AX; $rs=0.231$, $P < 0.05$). In the KMPlot database, OS data were available for 876 patients with gastric cancer, and GYG2P1 (HR of death=1.600, 95% CI=1.340-1.920, $P < 0.001$), RPS4Y1 (HR of death=1.370, 95% CI=1.110-1.690, $P = 0.003$), TXLNG (HR of death=0.790, 95% CI=0.630-0.980, $P = 0.031$) and EIF1AX (HR of death=0.470, 95% CI=0.390-0.560, $P < 0.001$) were differentially expressed. GYG2P1, RPS4Y1, TXLNG and EIF1AX were indicated to be upregulated by DNA hypomethylation. GYG2P1 and RPS4Y1 were highly expressed in male patients and were significantly associated with a poor prognosis. By contrast, high expression of TXLNG and EIF1AX in female patients was associated with a favorable prognosis (Fig. 7).

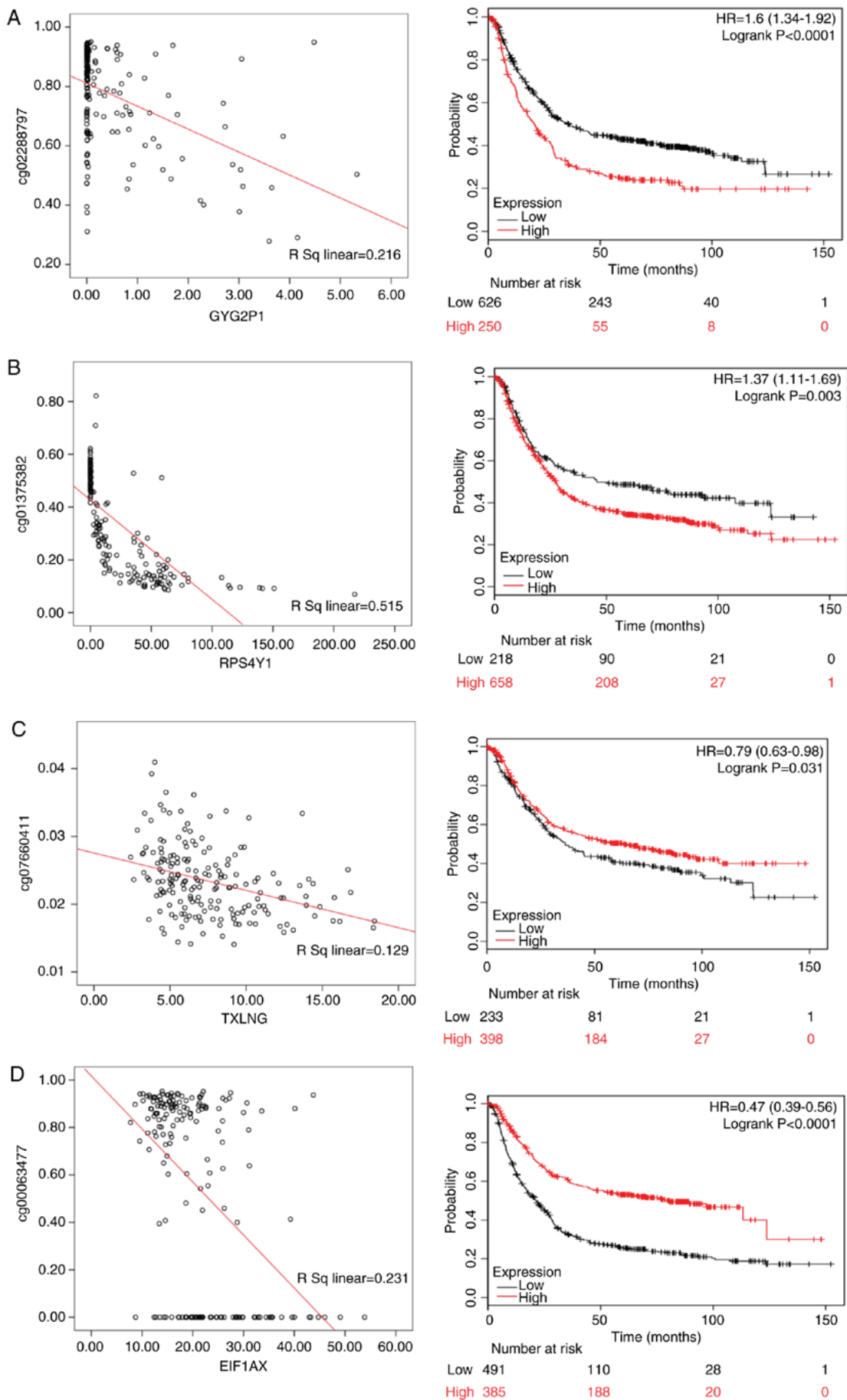


Figure 7. The left panels shows the correlation between methylated sites and gene expression in White gastric cancer patients. The right panels represent the Kaplan-Meier OS of gene expression in White gastric cancer patients. (A) GYG2P1; (B) RPS4Y1; (C) TXLNG; and (D) EIF1AX. GYG2P1, glycogenin 2 pseudogene 1; RPS4Y1, ribosomal protein S4 Y-linked 1; TXLNG, taxilin- γ ; EIF1AX, eukaryotic translation initiation factor 1A X-linked.

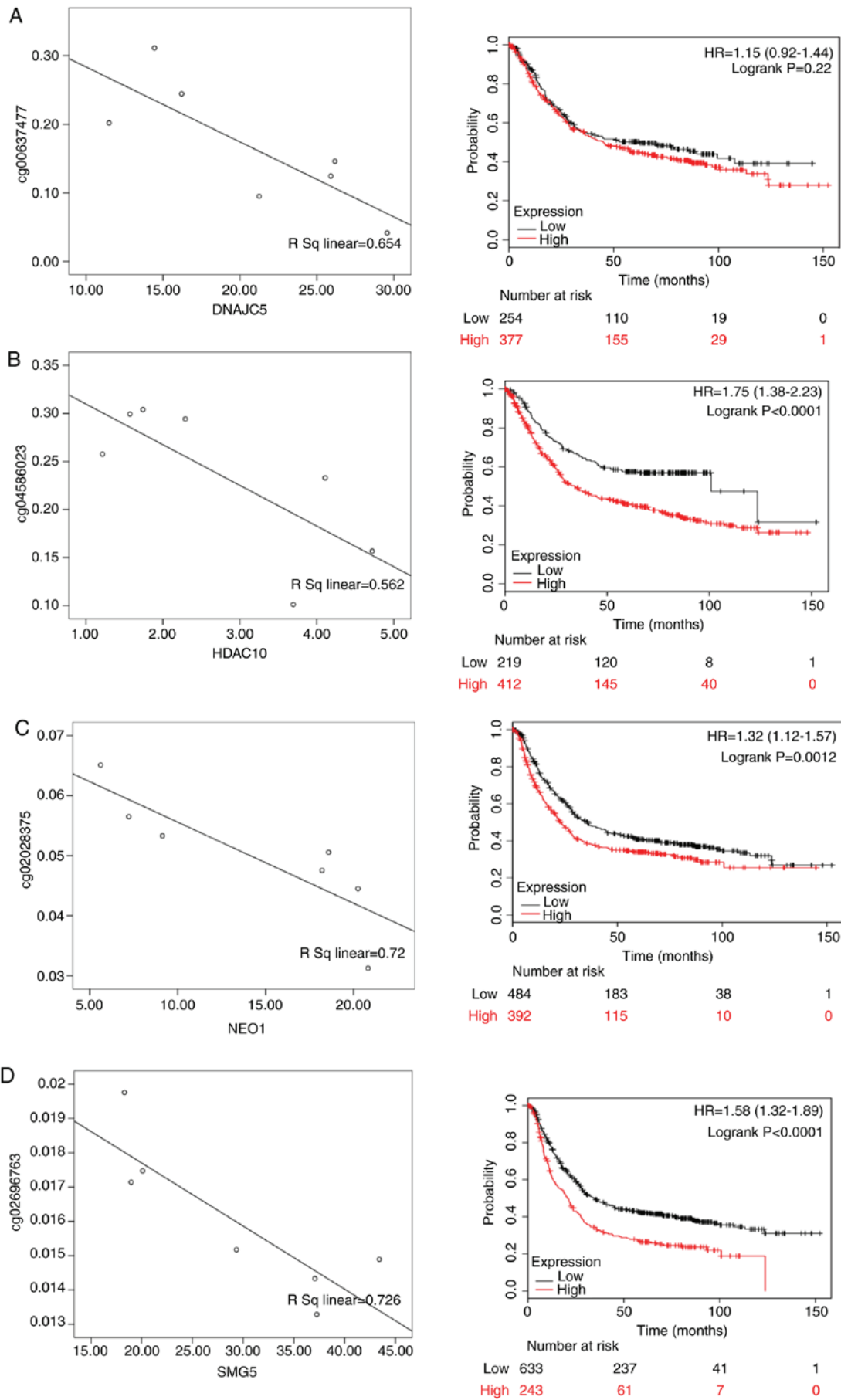


Figure 8. The left panels shows the correlation between methylated sites and gene expression in Black gastric cancer patients. The right panels represent the Kaplan-Meier OS of gene expression in Black gastric cancer patients. (A) DNAJC5; (B) HDAC10; (C) NEO1; and (D) SMG5. DNAJC5, DnaJ heat shock protein family (Hsp40) member C5; HDAC10, histone deacetylase 10; NEO1, neogenin 1; SMG5, SMG5 nonsense mediated mRNA decay factor.

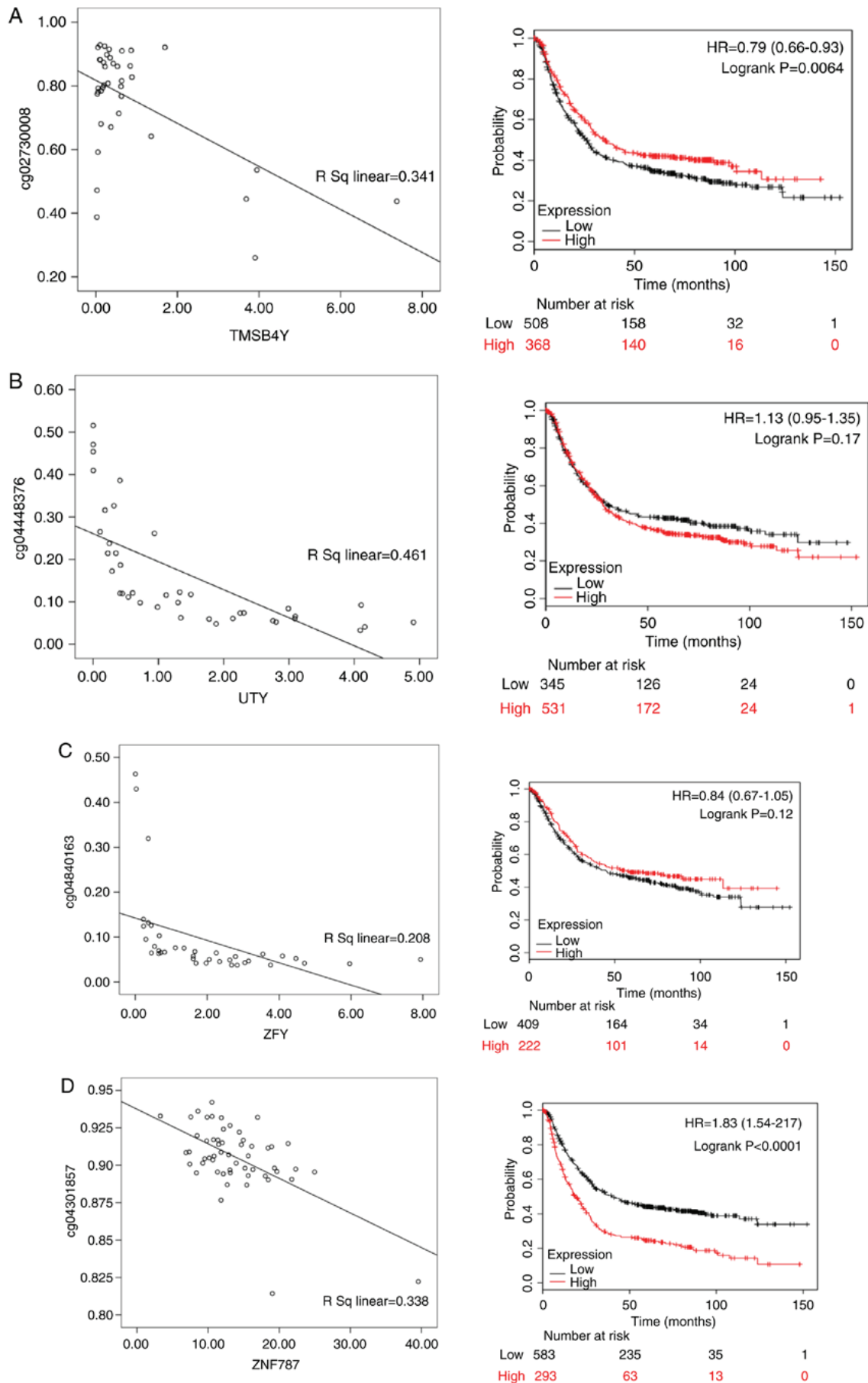


Figure 9. The left panels shows the correlation between methylated sites and gene expression in Asian gastric cancer patients. The right panels represent the Kaplan-Meier OS of gene expression in Asian gastric cancer patients. (A) TMSB4Y; (B) UTY; (C) ZFY; and (D) ZNF787. TMSB4Y, thymosin β 4 Y-linked; UTY, ubiquitously transcribed tetratricopeptide repeat containing, Y-linked; ZFY, zinc finger protein Y-linked; ZNF787, zinc finger protein 787.

Table IV. Known function/phenotype of Protein-protein interaction analysis of differential genes between of gender in different races of patients with gastric cancer.

Author, year	Protein	Protein function	Expression	(Refs.)
Loh <i>et al</i> , 2009	GYG2P1	Glycogenin 2 pseudogene 1. The expression of pseudogenes is significantly related to the development and prognosis of tumors.	White male	(23)
Lou <i>et al</i> , 2019	RPS4Y1	RPS4Y1 is a full name of ribosomal protein S4 Y-linked 1, which is a member. of the ribosomal protein S4E family. The role of RPS4Y1 is similar to that of RPS4X; its high level of expression is associated with poor prognosis of intrahepatic cholangiocarcinoma and non-mucinous carcinoma	White male	(24)
Jung <i>et al</i> , 2011	TXLNG	Located in Xp22.2, the full name of taxilin- γ , which encodes a member of the paclitaxel family. The encoded protein binds to the c-terminal coil region of the diamine family members 1a, 3a and 4a and may play a role in intracellular vesicle transport, which is mediated by lipopolysaccharide and may be involved in Cell cycle regulation.	White female	(25)
Yu <i>et al</i> , 2005	EIF1AX	EIF1AX is located at Xp22.12 and is called the eukaryotic translation initiation factor 1A X-linked. This gene encodes an important eukaryotic translation initiation factor. The expression of EIF1AX is an important factor in translation which affect tumor progression and prognosis	White female	(26)
Benitez <i>et al</i> , 2017	DNAJC5	Located at 20q13.33, the full name of DnaJ heat shock protein family (Hsp40) member C5, which is a member of the J protein family. The relationship between this gene and tumors, and the tumor-related effects are not yet clear.	Black male	(27)
Tao <i>et al</i> , 2017	HDAC10	Located at 22q13.33, the full name of histone deacetylase 10, which encodes a protein belonging to the family of histone deacetylases, members of which deacetylate lysine residues at the n-terminal portion of the core histone.	Black male	(28)
Qu <i>et al</i> , 2018	NEO1	Located at 15q24.1, the full name of neogenin 1, which encodes a cell surface protein that is a member of the immunoglobulin superfamily. Increased expression of NEO1 increases the sensitivity of gastric cancer cells to carboplatin.	Black male	(29)
Benitez <i>et al</i> , 2017	SMG5	Located in 1q22, the full name is nonsense mediated mRNA decay factor, and SMG5 is involved in non-sensory-mediated mRNA decay.	Black male	(27)
Wong <i>et al</i> , 2015	TMSB4Y	Located in Yq11.221, the full name of thymosin beta 4 Y-linked, which is located in a specific region of the Y chromosome and encodes an actin-separating protein. The expression of TMSB4Y is significantly related to the inhibition of tumor migration.	Asian male	(30)
Tricoli <i>et al</i> , 1993	UTY	Located in Yq11.221, the full name of ubiquitously transcribed tetratricopeptide repeat containing, Y-linked, which encodes a protein containing a repeat of tetra-quartin, thought to be involved in protein-protein interactions.	Asian male	(31)
Tricoli <i>et al</i> , 1993	ZFY	Located in Yp11.2, the full name zinc finger protein Y-linked, which encodes a zinc-containing finger protein that acts as a transcription factor and is mainly involved in apoptosis of male stem cells.	Asian male	(31)
Li <i>et al</i> , 2014	ZNF787	Located at 19q13.43, the full name of zinc finger protein 787. Some abnormalities in ZNF protein can increase the expression of MMP 2, MMP-9 and ICAM-1, reduce the expression of timp-1, and promote the migration and invasion of gastric cancer.	Asian female	(32)

GYG2P1, glycogenin 2 pseudogene 1; RPS4Y1, ribosomal protein S4 Y-linked 1; TXLNG, taxilin- γ ; EIF1AX, eukaryotic translation initiation factor 1A X-linked; DNAJC5, DnaJ heat shock protein family (Hsp40) member C5; HDAC10, histone deacetylase 10; NEO1, neogenin 1; SMG5, SMG5 nonsense mediated mRNA decay factor; TMSB4Y, thymosin β 4 Y-linked; UTY, ubiquitously transcribed tetratricopeptide repeat containing, Y-linked; ZFY, zinc finger protein Y-linked; ZNF787, zinc finger protein 787; MMP, matrix metalloproteinase; ICAM-1, intercellular adhesion molecule 1; timp-1, TIMP metalloproteinase inhibitor 1.

For Black patients, DnaJ heat shock protein family (Hsp40) member C5 (DNAJC5; $rs=0.654$, $P<0.05$), histone deacetylase 10 (HDAC10; $rs=0.562$, $P<0.05$), neogenin 1 (NEO1; $rs=0.720$, $P<0.05$) and SMG5 nonsense mediated mRNA decay factor (SMG5; $rs=0.726$; $P<0.05$) were differentially expressed. According to the KMPlot database, 876 patients with gastric cancer had OS data, including those with differential expression of DNAJC5 (HR of death=1.15, 95% CI=0.920-1.440, $P=0.220$), HDAC10 (HR of death=1.750, 95% CI=1.380-2.230, $P<0.001$), NEO1 (HR of death=1.320,

95% CI=1.120-1.570, $P=0.001$) and SMG5 (HR of death=1.580, 95% CI=1.320-1.890, $P<0.001$). Among these genes, DNAJC5, HDAC10, NEO1 and SMG5 were highly expressed in male patients and were significantly associated with a poor prognosis (Fig. 8).

Thymosin β 4 Y-linked (TMSB4Y; $rs=0.341$, $P<0.05$), ubiquitously transcribed tetratricopeptide repeat containing, Y-linked (UTY; $rs=0.461$, $P<0.05$), zinc finger protein Y-linked (ZFY; $rs=0.208$, $P<0.05$) and zinc finger protein 787 (ZNF787; $rs=0.338$, $P<0.05$) were differentially expressed in

Asian patients, and there were 876 gastric cancer patients with OS data from KMPlot database. ZFY (HR of death=0.840, 95% CI=0.670-1.050, P=0.12), TMSB4Y (HR of death=0.790, 95% CI=0.660-0.930, P=0.006), UTY (HR of death=1.130, 95% CI=0.950-1.350, P=0.170) and ZNF787 (HR of death=1.830, 95% CI=1.540-2.170, P<0.001) were differentially expressed. ZFY, TMSB4Y and UTY were highly expressed in male patients, and TMSB4Y was significantly associated with a better prognosis; ZNF787 was highly expressed in female patients and associated with a poor prognosis (Fig. 9).

Discussion

The present study analyzed 93,278 gastric cancer patients in the SEER and Sun Yat-Sen University Center for Gastric Cancer Research databases, with 2,857 Asian, 13,223 Black and 77,198 White patients. In the Asian population, the male to female ratio was 1.96; that of the Black population was 1.53, and that of the White population was 1.81. This ratio is similar to that in a previous study, indicating that the incidence of gastric cancer in men is almost twice that in women (3). Based on the general tumor characteristics of gastric cancer patients of the different ethnic groups, it was found that for White patients, the tumor grade of male patients was worse than that of female patients; this difference was not significant for Black patients. Conversely, the tumor grade of Asian female patients was worse than that of Asian male patients. This may be an important factor leading to the effect of sex on the prognosis of gastric cancer. Despite the few studies on the tumor characteristics of gastric cancer in different sexes, Aron *et al* (19) studied patients with renal cell carcinoma in the SEER database, and found that tumor size and tumor stage were lower among females compared to males, which is similar to the results for gastric cancer in the present study. Furthermore, there are few studies on the prognosis of gastric cancer in the different sexes. However, Kim *et al* (20) analyzed 4,722 patients undergoing radical gastrectomy, including 3,136 males and 1,586 females, and found that younger female patients had a higher incidence of signet ring cell carcinoma than did men, and that the prognosis of gastric cancer among women was worse than that among men. Li *et al* (21) also investigated 96,501 gastric cancer patients, including 61,639 males and 34,862 females, reporting that the former presented with larger tumors, higher stages and higher-grade gastric cancer; in addition, OS and CSS were better in women, with a significant difference. These studies suggested that sex has a significant effect on gastric cancer.

To date, the impact of ethnicity on gastric cancer has been assessed in a considerable number of reports. Dong *et al* (3) conducted a retrospective cohort study of the comprehensive healthcare system in southern California between 2008 and 2014 by assessing the incidence of gastric cancer in different races, and found that race is indeed a risk factor. Non-Hispanic Black patients had an odds ratio (OR) of 1.500, White Hispanic patients had an OR of 1.400 and Asian patients had an OR of 1.500 (3). The above data showed that the incidence of gastric cancer in Asian populations is high. In fact, 75% of gastric cancer patients in the world are of Asian descent (5). In addition to these racial differences, the impact of sex on gastric cancer is also worthy of further study. Globally, the incidence of gastric cancer in women is almost half that in men. However, a study from South Korea

found that although the incidence in women is lower than that in men, the prognosis of women is generally poor and the average age of onset is low (55.0 years for females and 57.9 years for males) (20). A study in the United States between 2010 and 2014 reported that the incidence of gastric cancer in male Asian patients was 14/100,000, and that in female patients was 8/100,000, with mortality rates of 7.1/100,000 and 4.3/100,000 for males and females, respectively. The incidence of gastric cancer in males of the African American population was 13.6/100,000 and that in females was 7.8/100,000, with mortality rates of 8.6/100,000 and 4.1/100,000 for males and females, respectively. Lastly, the incidence of gastric cancer in males of the White American population was 8.2/100,000 and that in females was 3.7/100,000; the mortality rate was 3.4/100,000 for males and 1.7/100,000 for females (22). In fact, the effects of sex on gastric cancer in patients of different ethnic backgrounds vary considerably. The present study showed that the prognosis of White female patients with gastric cancer in the United States was better than that of White male patients. By contrast, the difference between men and women may not be significant among Black gastric cancer patients, but for Chinese patients, the prognosis of females was worse than that of males. These conclusions are consistent with the conclusions of the previous studies mentioned above.

Different populations carry different gene mutations, and gene expression also varies, which may explain why different populations have differences in cancer risk. For example, Loh *et al* (23) studied polymorphisms in gastric cancer genes in different ethnic groups by evidence-based medicine. A total of 203 related studies were included, and 225 polymorphisms in 95 genes were evaluated; the results showed that race can have a marked impact on the risk of gastric cancer. The present study also evaluated differential gene expression between ethnicities and found significant differences among White, Black and Asian patients. Among them, the DEGs between White male and female patients were mainly enriched in RNA binding and transcription pathways. A total of four core genes were identified, GYG2P1, RPS4Y1, TXLNG and EIF1AX, according to the relationship between gene expression and DNA methylation (Table IV). GYG2P1 (24), RPS4Y1 (25), TXLNG (26) and EIF1AX (26) are mainly involved in tumor RNA binding and transcriptional pathways, as well as the survival prognosis of patients with different sexes of gastric cancer. In general, the impact of these core genes on tumors may be an important factor leading to poor prognosis in males. The DEGs between Black male and female patients were mainly enriched in cell structural changes, and DNAJC5, HDAC10, NEO1 and SMG5 were identified by the same means described above (Table IV). However, there is little research on the relationship between DNAJC5 and SMG5 in tumors, and tumor-related effects are not yet clear (27). Although studies have shown that high expression of HDAC10 can improve prognosis, high expression of this gene was reported to be associated with a poor prognosis (28). Increased expression of NEO1 increases the sensitivity of gastric cancer cells to carboplatin (29). Overall, these genes may play a role by altering the structural function of cells, though the influence of these genes on the survival prognosis of gastric cancer in different sexes remains unclear. For Asian patients, the DEGs between the sexes were mainly enriched in cell surface receptor-associated signal transduction and the G-protein coupled receptor protein signaling, and four core genes were screened, TMSB4Y, UTY, ZFY and ZNF787,

based on the relationship between gene expression and DNA methylation (Table IV). TMSB4Y is significantly related to the inhibition of tumor migration, suggesting that it may be a tumor-suppressor gene (30). In this study, it was also found that elevated expression of TMSB4Y can improve the prognosis of patients. UTY and ZFY are mainly involved in apoptosis in stem cells in males (31), yet their impact on cancer is still unclear. ZNF can promote the migration and invasion of gastric cancer (32). The present study found that elevated expression of ZNF787 affects the prognosis of patients. The impact of these core genes on tumors may be an important factor leading to poor prognosis in females.

Although the present study provided a comprehensive analysis of the prognosis of patients with different ethnic backgrounds based on the world's largest database and data from China's largest center for gastric cancer research, there are several limitations. First, because the staging standards were different at different periods, SEER data were divided into 1973-2003 and 2004-2013 periods to include more patients and bolster the results. Due to the limitations of follow-up in the databases, some data were not available, such as the situation of patients with respect to chemotherapy, which may have an impact on the conclusion. Second, as the classification of patients in the SEER database does not distinguish between Asians and Indians and South Americans, analysis of data for the Asian population from the SEER database is not possible. Third, this study was a retrospective study, and thus there may be some bias in the statistical results. Fourth, a period of 40 years was examined because of differences in treatment and diet, and potentially variable environmental factors. These factors could affect the accuracy of the results. Given that the present study was retrospective, the data collection was not strictly randomized; therefore, the presence of confounding factors is unavoidable. Furthermore, whether sex differences are the cause of differences in the prognosis of patients with gastric cancer cannot be directly determined.

In the present study, it was found that the effects of sex on the prognosis of gastric cancer patients of different ethnicities differed. It was concluded that differences in molecular mechanisms between the two sexes among gastric cancer patients of different ethnic groups are the main reasons for the observed variability.

Acknowledgements

Not applicable.

Funding

No funding was received.

Availability of data and materials

The datasets used and/or analyzed during the current study are available from the corresponding author on reasonable request.

Authors' contributions

CZ and HL conceived and designed the study. HL, CW, ZW, ZG, WC and YH performed the data analysis. HL, CW and

ZW wrote the paper. All authors read and approved the manuscript.

Ethics approval and consent to participate

The information of for White and Black patients with gastric cancer obtained from the SEER database does not contain any identifiers and is public. Due to the retrospective nature of the study, informed consent was not required. All SEER database information was deidentified by the United States National Cancer Institute review board approval. This analysis did not involve interaction with human subjects or the use of personally identifiable information. The research on the Asian cohort was approved by the ethics committee of the First Affiliated Hospital of Sun Yat-Sen University, and written informed consent was obtained from all of these patients.

Patient consent for publication

Not applicable.

Competing interests

The authors declare that they have no competing interests.

References

- Allemani C, Matsuda T, Di Carlo V, Harewood R, Matz M, Nikšić M, Bonaventure A, Valkov M, Johnson CJ, Estève J, *et al*: Global surveillance of trends in cancer survival 2000-14 (CONCORD-3): Analysis of individual records for 37 513 025 patients diagnosed with one of 18 cancers from 322 population-based registries in 71 countries. *Lancet* 391: 1023-1075, 2018.
- Torre LA, Bray F, Siegel RL, Ferlay J, Lortet-Tieulent J and Jemal A: Global cancer statistics, 2012. *CA Cancer J Clin* 65: 87-108, 2015.
- Dong E, Duan L and Wu BU: Racial and Ethnic minorities at increased risk for gastric cancer in a regional US population study. *Clin Gastroenterol Hepatol* 15: 511-517, 2017.
- Ferlay J, Soerjomataram I, Dikshit R, Eser S, Mathers C, Rebelo M, Parkin DM, Forman D and Bray F: Cancer incidence and mortality worldwide: Sources, methods and major patterns in GLOBOCAN 2012. *Int J Cancer* 136: E359-E386, 2015.
- Karimi P, Islami F, Anandasabapathy S, Freedman ND and Kamangar F: Gastric cancer: Descriptive epidemiology, risk factors, screening, and prevention. *Cancer Epidemiol Biomarkers Prev* 23: 700-713, 2014.
- Hwang KT, Kim J, Jung J, Chang JH, Chai YJ, Oh SW, Oh S, Kim YA, Park SB and Hwang KR: Impact of breast cancer subtypes on prognosis of women with operable invasive breast cancer: A population-based study using SEER database. *Clin Cancer Res* 25: 1970-1979, 2019.
- Greene FL, Compton CC, Fritz AG, Shah JP and Winchester DP: *AJCC Cancer Staging Atlas*. Springer, New York, NY, 2006.
- Li B and Dewey CN: RSEM: Accurate transcript quantification from RNA-Seq data with or without a reference genome. *BMC Bioinformatics* 12: 323, 2011.
- Aryee MJ, Jaffe AE, Corrada-Bravo H, Ladd-Acosta C, Feinberg AP, Hansen KD and Irizarry RA: Minfi: A flexible and comprehensive bioconductor package for the analysis of Infinium DNA methylation microarrays. *Bioinformatics* 30: 1363-1369, 2014.
- Sandoval J, Mendez-Gonzalez J, Nadal E, Chen G, Carmona FJ, Sayols S, Moran S, Heyn H, Vizoso M, Gomez A, *et al*: A prognostic DNA methylation signature for stage I non-small-cell lung cancer. *J Clin Oncol* 31: 4140-4147, 2013.
- Teschendorff AE, Marabita F, Lechner M, Bartlett T, Tegner J, Gomez-Cabrero D and Beck S: A beta-mixture quantile normalization method for correcting probe design bias in Illumina Infinium 450 k DNA methylation data. *Bioinformatics* 29: 189-196, 2013.

12. Langevin SM, Butler RA, Eliot M, Pawlita M, Maccani JZ, McClean MD and Kelsey KT: Novel DNA methylation targets in oral rinse samples predict survival of patients with oral squamous cell carcinoma. *Oral Oncol* 50: 1072-1080, 2014.
13. Böhnke JR: Explanation in causal inference: Methods for mediation and interaction. *Q J Exp Psychol (Hove)* 69: 1243-1244, 2016.
14. Gene Ontology Consortium: The gene ontology (GO) project in 2006. *Nucleic Acids Res* 34: D322-D326, 2006.
15. Ashburner M, Ball CA, Blake JA, Botstein D, Butler H, Cherry JM, Davis AP, Dolinski K, Dwight SS, Eppig JT, *et al*: Gene ontology: Tool for the unification of biology. The gene ontology consortium. *Nat Genet* 25: 25-29, 2000.
16. Györfy B, Lanczky A, Eklund AC, Denkert C, Budczies J, Li Q and Szallasi Z: An online survival analysis tool to rapidly assess the effect of 22,277 genes on breast cancer prognosis using microarray data of 1,809 patients. *Breast Cancer Res Treat* 123: 725-731, 2010.
17. Austin PC: Optimal caliper widths for propensity-score matching when estimating differences in means and differences in proportions in observational studies. *Pharm Stat* 10: 150-161, 2011.
18. Herman JG and Baylin SB: Gene silencing in cancer in association with promoter hypermethylation. *N Engl J Med* 349: 2042-2054, 2003.
19. Aron M, Nguyen MM, Stein RJ and Gill IS: Impact of gender in renal cell carcinoma: An analysis of the SEER database. *Eur Urol* 54: 133-140, 2008.
20. Kim HW, Kim JH, Lim BJ, Kim H, Kim H, Park JJ, Youn YH, Park H, Noh SH, Kim JW and Choi SH: Sex disparity in gastric cancer: Female sex is a poor prognostic factor for advanced gastric cancer. *Ann Surg Oncol* 23: 4344-4351, 2016.
21. Li H, Wei Z, Wang C, Chen W, He Y and Zhang C: Gender differences in gastric cancer survival: 99,922 cases based on the SEER database. *J Gastrointest Surg*: Jul 25, 2019 (Epub ahead of print).
22. Ashktorab H, Kupfer SS, Brim H and Carethers JM: Racial disparity in gastrointestinal cancer risk. *Gastroenterology* 153: 910-923, 2017.
23. Loh M, Koh KX, Yeo BH, Song CM, Chia KS, Zhu F, Yeoh KG, Hill J, Iacopetta B and Soong R: Meta-analysis of genetic polymorphisms and gastric cancer risk: Variability in associations according to race. *Eur J Cancer* 45: 2562-2568, 2009.
24. Lou W, Ding B and Fan W: High expression of pseudogene PTTG3P indicates a poor prognosis in human breast cancer. *Mol Ther Oncolytics* 14: 15-26, 2019.
25. Jung Y, Lee S, Choi HS, Kim SN, Lee E, Shin Y, Seo J, Kim B, Jung Y, Kim WK, *et al*: Clinical validation of colorectal cancer biomarkers identified from bioinformatics analysis of public expression data. *Clin Cancer Res* 17: 700-709, 2011.
26. Yu VW, Ambartsoumian G, Verlinden L, Moir JM, Prud'homme J, Gauthier C, Roughley PJ and St-Arnaud R: FIAT represses ATF4-mediated transcription to regulate bone mass in transgenic mice. *J Cell Biol* 169: 591-601, 2005.
27. Benitez BA and Sands MS: Primary fibroblasts from CSP α mutation carriers recapitulate hallmarks of the adult onset neuronal ceroid lipofuscinosis. *Sci Rep* 7: 6332, 2017.
28. Tao X, Yan Y, Lu L and Chen B: HDAC10 expression is associated with DNA mismatch repair gene and is a predictor of good prognosis in colon carcinoma. *Oncol Lett* 14: 4923-4929, 2017.
29. Qu H, Sun H and Wang X: Neogenin-1 promotes cell proliferation, motility, and adhesion by up-regulation of zinc finger E-box binding homeobox 1 via activating the Rac1/PI3K/AKT pathway in gastric cancer cells. *Cell Physiol Biochem* 48: 1457-1467, 2018.
30. Wong HY, Wang GM, Croessmann S, Zabransky DJ, Chu D, Garay JP, Cidado J, Cochran RL, Beaver JA, Aggarwal A, *et al*: TMSB4Y is a candidate tumor suppressor on the Y chromosome and is deleted in male breast cancer. *Oncotarget* 6: 44927-44940, 2015.
31. Tricoli JV and Bracken RB: ZFY gene expression and retention in human prostate adenocarcinoma. *Genes Chromosomes Cancer* 6: 65-72, 1993.
32. Li Y, Tan BB, Zhao Q, Fan LQ, Wang D and Liu Y: ZNF139 promotes tumor metastasis by increasing migration and invasion in human gastric cancer cells. *Neoplasia* 61: 291-298, 2014.



This work is licensed under a Creative Commons Attribution-NonCommercial-NoDerivatives 4.0 International (CC BY-NC-ND 4.0) License.