



# Multiplexed ISSR genotyping by sequencing distinguishes two precious coral species (Anthozoa: Octocorallia: Coralliidae) that share a mitochondrial haplotype

Kenji Takata<sup>1,2</sup>, Hiroki Taninaka<sup>3</sup>, Masanori Nonaka<sup>4</sup>, Fumihito Iwase<sup>5</sup>, Taisei Kikuchi<sup>6</sup>, Yoshihisa Suyama<sup>7</sup>, Satoshi Nagai<sup>8</sup> and Nina Yasuda<sup>2</sup>

<sup>1</sup> Graduate School of Agriculture, Faculty of Agriculture, University of Miyazaki, Miyazaki, Miyazaki, Japan

<sup>2</sup> Department of Marine Biology and Environmental Sciences, Faculty of Agriculture, University of Miyazaki, Miyazaki, Miyazaki, Japan

<sup>3</sup> Interdisciplinary Graduate School of Agriculture and Engineering, University of Miyazaki, Miyazaki, Miyazaki, Japan

<sup>4</sup> Okinawa Churashima Foundation Research Center, Motobu, Okinawa, Japan

<sup>5</sup> Shikoku Marine Life Laboratory, Otsuki, Kochi, Japan

<sup>6</sup> Parasitology, Faculty of Medicine, University of Miyazaki, Miyazaki, Miyazaki, Japan

<sup>7</sup> Field Science Center, Graduate School of Agricultural Science, Tohoku University, Osaki, Miyagi, Japan

<sup>8</sup> National Research Institute of Fisheries Science, Japan Fisheries Research and Education Agency, Yokohama, Kanagawa, Japan

## ABSTRACT

**Background.** Precious corals known as coralliid corals (Anthozoa: Octocorallia) play an important role in increasing the biodiversity of the deep sea. Currently, these corals are highly threatened because of overfishing that has been brought on by an increased demand and elevated prices for them. The deep sea precious corals *Pleurocorallium elatius* and *P. konojoi* are distributed in Japanese waters and have distinct morphological features: (1) the terminal branches of the colony form of *P. elatius* are very fine, while those of *P. konojoi* are blunt and rounded, (2) the autozooids of *P. elatius* are arranged in approximately four rows, while those of *P. konojoi* are clustered in groups. However, previous genetic analysis using mtDNA and nuclear DNA did not indicate monophyly. Therefore, it is important to clarify their species status to allow for their conservation.

**Methodology.** We collected a total of 87 samples (60 of *Corallium japonicum* and 27 of *P. konojoi*) from around the Ryukyu Islands and Shikoku Island, which are geographically separated by approximately 1,300 km. We used a multiplexed inter-simple sequence repeat (ISSR) genotyping by sequencing (MIG-seq) and obtained 223 SNPs with which to perform STRUCTURE analysis and principle coordinate analysis (PCoA). In addition, two relatively polymorphic mtDNA regions were sequenced and compared.

**Results.** *P. elatius* and *P. konojoi* share a same mtDNA haplotype, which has been previously reported. However, MIG-seq analysis clearly distinguished the two species based on PCoA and STRUCTURE analysis, including 5% of species-specific fixed SNPs.

**Conclusion.** This study indicated that *P. elatius* and *P. konojoi* are different species and therefore both species should be conserved separately. Our findings highlight

Submitted 24 April 2019  
Accepted 27 August 2019  
Published 4 October 2019

Corresponding author  
Nina Yasuda,  
nina27@cc.miyazaki-u.ac.jp

Academic editor  
Mauricio Rodriguez-Lanetty

Additional Information and  
Declarations can be found on  
page 10

DOI 10.7717/peerj.7769

© Copyright  
2019 Takata et al.

Distributed under  
Creative Commons CC-BY 4.0

OPEN ACCESS

the importance of the conservation of these two species, especially *P. elatius*, whose population has been dramatically depleted over the last 100 years. The study also demonstrated the effectiveness and robustness of MIG-seq for defining closely related octocoral species that were otherwise indistinguishable using traditional genetic markers (mtDNA and EF).

**Subjects** Biodiversity, Conservation Biology, Marine Biology

**Keywords** MIG-seq, Incomplete lineage sorting, Species delimitation, Deep sea coral, Octocoral

## INTRODUCTION

Precious corals belong to family Coralliidae (Anthozoa: Octocorallia) play an important role in increasing the biodiversity of the deep sea by providing a complex habitat structure, suitable for other species to live in [Roberts, Wheeler & Freiwald \(2006\)](#). Their beautiful red and pink axis has drawn great attention and they have been harvested for ornaments, jewelry, and currency since ancient times ([Chen, 2012](#); [Clark & Rowden, 2009](#)). Recent studies, however, indicated precious corals are vulnerable to overfishing because of their low fecundity and slow growth rate ([Nonaka, Nakamura & Muzik, 2015](#); [Luan et al., 2013](#); [Torrents et al., 2005](#)). Consequently, there is an increasing need for the conservation of overexploited precious corals in order to avoid local extinction ([CITES-Netherlands, 2007](#); [CITES-Qatar, 2009](#)).

Species delimitation is important for conserving precious corals due to the fact that the species is the most fundamental unit for preservation ([De Queiroz, 2007](#)). However, species identification of the precious corals is sometimes difficult, especially for closely related species. The use of morphological characteristics in determining the species identification of octocorals, including precious corals, is the typical method; however, variations, and high frequency of homoplasy sometimes hinder identification ([Figueroa & Baco, 2014](#)). More recently, molecular and phylogenetic approaches using partial mitochondrial DNA (mtDNA) have emerged as useful tools to identify octocoral species ([McFadden et al., 2011](#); [Pante et al., 2012](#); [Quattrini et al., 2014](#)). In Coralliidae, the intergenic region 1 (IGR1) in mtDNA has a relatively high intra-species variation and is proposed as a useful marker for distinguishing between precious coral species ([Tu, Dai & Jeng, 2015](#)). Although mtDNA is widely used for species delimitation, discordances with the morphological characteristics of species still remain. For example, morphologically distinct species in *Hemicorallium* cannot be delineated using mtDNA ([Ardila, Giribet & Sánchez, 2012](#); [Tu, Dai & Jeng, 2015](#)). Indeed, the slow mtDNA evolution has long been recognized for anthozoans ([Hellberg, 2006](#); [France & Hoover, 2002](#)). Octocoral species in particular have a slow mutation rate of mtDNA, due to octocoral-specific DNA repairing enzymes ([Bilewitch & Degnan, 2011](#); [France & Hoover, 2002](#)). These facts indicate that a higher resolution genetic marker is required to elucidate the species status of closely related precious coral species.

The advent of high-throughput sequencing technology has rendered a large number of loci of non-model organisms accessible in a short time period. For example, the restriction site associated DNA sequence (RADseq) ([Baird et al., 2008](#)) has been applicable

in non-model organisms to delimit closely related species of many reference taxa. In deep sea octocorals, only a few studies have applied RADseq for species delimitation. RADseq has helped fine-tune the species status of genus *Chrysogorgia* (Pante *et al.*, 2014) and revealed robust species boundaries in the genus *Paragorgia* using the Bayesian model based-method (Herrera & Shank, 2016). Additional studies using the high-throughput technology to delineate closely related precious coral species would be helpful to reveal species boundaries.

Multiplexed inter simple sequence repeat (ISSR) genotyping by sequencing (MIG-seq) is an easy, cost-effective, novel method to obtain a moderate number of single nucleotide polymorphisms (SNPs) of non-model organisms using polymerase chain reaction (PCR) and high-throughput technology. The number of available SNPs from MIG-seq analysis is generally less than those using other techniques such as RAD-seq (Miller *et al.*, 2007). However, MIG-seq has several advantages, namely that putatively neutral loci adjacent to microsatellite regions can be obtained and the method can be performed with small amounts and/or low-quality DNA, and is relatively easy to perform cheaply. The ISSR regions are first amplified by PCR using universal primer sets, indexed by a second PCR, and then sequenced to obtain up to a few thousand SNPs. Closely related species of *Heliopora* were successfully delineated using MIG-seq (Richards *et al.*, 2018), implying the effectiveness of this method for other closely related octocoral species.

Our target species, deep sea precious corals *P. elatius* and *P. konojoi* are distributed in Japanese waters at depths of 115–330 m (Nonaka & Muzik, 2009). *P. elatius* and *P. konojoi* can be distinguished by at least two morphological features: (1) terminal branches of the colony form of *P. elatius* are fine, while those of *P. konojoi* are blunt and rounded, (2) autozooids of *P. elatius* are arranged in approximately four rows, while those of *P. konojoi* are clustered in groups (Nonaka *et al.*, 2012). Nevertheless, a previous molecular analysis suggested the two species shared a major haplotype at eight mtDNA regions and EF-1, indicating that the species status of these two is unclear (Tu, Dai & Jeng, 2015). Because these two species, especially *P. elatius*, are facing the risk of local extinction due to overfishing (Nonaka & Muzik, 2009), clarifying whether or not they are the same species with gene flow occurring between them is important for devising conservation strategies.

In this study, we applied MIG-seq analysis to clarify the species status of the two closely related precious corals, *P. elatius* and *P. konojoi* in order to obtain basic information for the conservation of precious coral species. We also sequenced widely used mtDNA regions for comparison with the MIG-seq results.

## MATERIALS AND METHODS

### Sample collection and DNA extraction

In total, 87 samples of *P. elatius* and *P. konojoi* (27 *P. elatius* and 60 *P. konojoi*) were collected from depths of 100 to 330 m using either a traditional coral net, underwater remotely operated vehicles (ROV), or submarines off Ryukyu, Kyushu, and Shikoku, Japan (Table 1). We collected some samples under the Kochi Prefecture sampling permit number Sa 401, Sa 412, and Sa 423 in Kochi. Samples were preserved in 90% ethanol and genomic

DNA was extracted using the hot alkaline solution method (Meeker *et al.*, 2007) followed by ethanol precipitation (Richards *et al.*, 2018).

### MtDNA analysis

Two mtDNA regions were sequenced for *P. elatius* and *P. konojoi*: IGR1 region using primers (IGR1-Co-F and IGR1-Co-R, Tu, Dai & Jeng, 2015) and putative mitochondrial DNA mismatch repairing gene (mitochondrial mutS-like protein) regions (MSH-Co-F and MSH-Co-R, Tu, Dai & Jeng, 2015) following the original protocols. Two regions were directly sequenced from both directions using Big Dye v 3.1 and the Abi3730 sequencer. All of the sequence data were manually checked using Bioedit ver. 7.0.9.0 (Hall, 1999) and then all the sequences were aligned on GENETIX ver. 12. The two mtDNA region sequences were concatenated and used for subsequent analysis. To assess genetic diversity, the number of haplotypes, number of polymorphic sites, haplotype diversity ( $h$ ) (Nei, 1987), and nucleotide diversity ( $\Pi$ ) were calculated using DNAsP ver. 5.1 (Librado & Rozas, 2009). A median-joining network (Bandelt, Forster & Rohlf, 1999) was constructed using NETWORK ver. 5.003, including gap sites, to visualize the evolutionary relationships between haplotypes obtained from *P. elatius* and *P. konojoi*. A maximum likelihood tree using MEGA 7.0 (Kumar, Stecher & Tamura, 2016) was constructed using concatenated mtDNA sequences. The best model was estimated using MEGA 7.0 based on the corrected Akaike Information Criterion and the Tamura 3-parameter model (Tamura, 1992) was used to construct a phylogenetic tree. Confidence values for phylogenetic trees were inferred using 1,000 bootstrap replicates. All mtDNA sequences obtained in this study were deposited (DDBJ Accession number: LC464485-LC464516, LC475110-LC475134).

### MIG-seq analysis

We performed a MIG-seq analysis to detect genome-wide SNPs following the protocol by Suyama & Matsuki (2015). Briefly, MIG-seq amplifies putatively neutral, anonymous genome-wide ISSR regions (Gupta *et al.*, 1994; Zietkiewicz, Rafalski & Labuda, 1994), including a few hundred to a few thousand SNPs, using 8 pairs of multiplex ISSR primers (MIG-seq primer set 1) for the first PCR. Then the DNA libraries from each sample with a different index were pooled and sequenced using MiSeq (sequencing control software v2.0.12, Illumina) with the MiSeq Reagent v3 150 cycle kit (Illumina). Image analysis and base calling were performed using real-time analysis software v1.17.21 (Illumina). We analyzed a total of 87 individuals with 27 *P. elatius* and 60 *P. konojoi* individuals collected from the Ryukyu Islands to Shikoku Island, geographically separated by approximately 1,300 km (Table 1).

To eliminate low-quality reads and primer sequences from the raw data, we used the FASTX-toolkit version 0.0.14 (fastq\_quality\_filter) (Gordon & Hannon, 2012; [http://hannonlab.cshl.edu/fastx\\_toolkit/index.html](http://hannonlab.cshl.edu/fastx_toolkit/index.html)) with a fastq-quality-filter setting of  $-Q\ 33 -q\ 30 -p\ 40$ . We removed adapter sequences for the Illumina MiSeq run from both the 5' end (GTCAGATCGGAAGAGCACACGTCTGAACTCCAGTCAC) and the 3' end (CAGAGATCGGAAGAGCGTCGTGTAGGGAAAGAC) using Cutadapt version 1.13 (Martin, 2011), and then we excluded short reads less than 80 bp. The quality-filtered

**Table 1** Precious coral samples used in this study.

	Location		Coordinate	MIG-seq	mtDNA	Sampling year	Sampling method
<i>Pleurocorallium konojoi</i>	Shikoku Island	Kouchi	32°30'41.87"N 132°49'42.26"E	47	0	Apr.11-Nov.14	traditional coral net
	Ryukyu Islands	Iou Is.	30°47'31.812"N 132°18'13.5"E	5	4	Dec.07-Aug.09	manned submarine
		Take Is.	30°48'36.684"N 130°25'43.356"E	7	7	Feb.08-May.09	manned submarine
		Tanega Is.	30°36'34.38"N 130°58'43.932"E	1	1	Dec.07-Aug.08	manned submarine
			60	12			
<i>Pleurocorallium elatius</i>	Shikoku Island	Kouchi	32°30'41.87"N 132°49'42.26"E	1	0	Jul.11	traditional coral net
	Ryukyu Islands	Iou Is.	30°47'31.812"N 132°18'13.5"E	2	4	Jun.05-Apr.09	manned submarine
		Take Is.	30°48'36.684"N 130°25'43.356"E	2	0	Sep.07-Oct.08	manned submarine
		Tanega Is.	30°36'34.38"N 130°58'43.932"E	3	3	Feb.06-Dec.07	manned submarine
		Yaku Is.	30°20'40.524"N 130°30'45.756"E	4	1	Aug.07-Aug.09	manned submarine
		Amami Is.	28°16'4.224"N 129°21'43.596"E	1	0	Aug.07	manned submarine
		Tokuno Is.	27°47'25.512"N 128°58'0.48"E	2	0	Oct.07-Aug.09	manned submarine
		Izena Is.	26°56'2.976"N 127°56'28.932"E	1	1	Jan.06	ROV
		Hateruma Is.	24°11'40.272"N 123°33'45.54"E	3	0	Sep.07-Mar.08	ROV
		Ikema Is.	24°55'49.836"N 125°14'42.216"E	1	1	May.09	ROV
		Tarama Is.	24°39'19.908"N 124°41'48.12"E	1	1	Aug.05-Dec.07	ROV
		Ishigaki Is.	24°24'23.04"N 124°10'31.584"E	5	1	Nov.05-Mar.09	ROV
		Nakanokami Is.	24°11'40.272"N 123°33'45.54"E	1	1	Mar.08-Apr.08	ROV
			27	13			
Total				87	25		

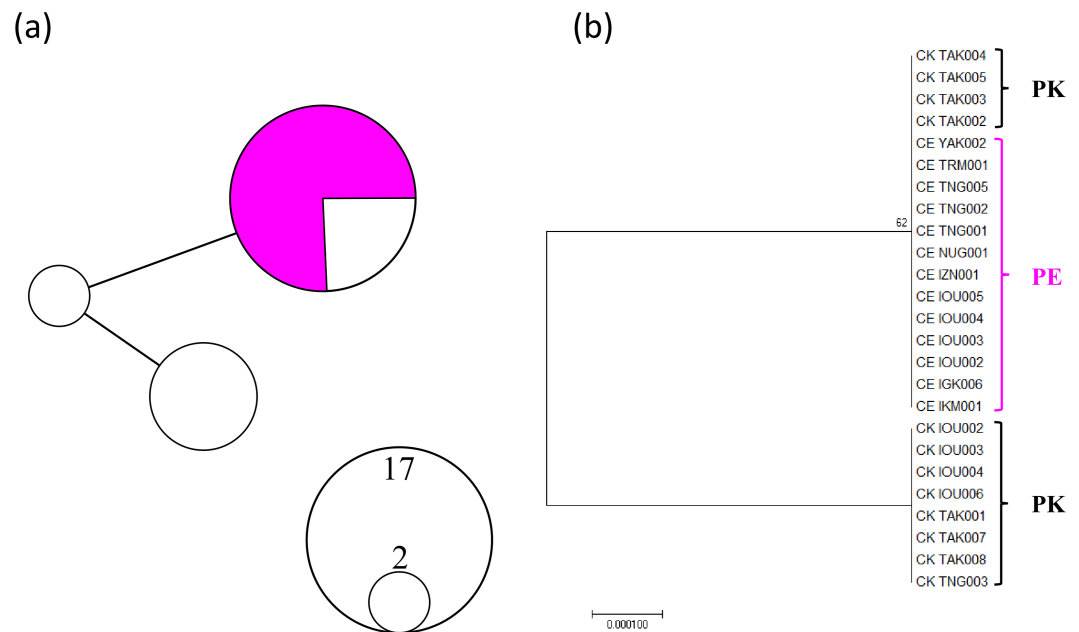
sequence data were demultiplexed and filtered through the software Stacks v1.46 (Catchen et al., 2011; Catchen et al., 2013). We used Stacks v. 1.4 (Catchen et al., 2013) to stack the reads and extract SNPs. First, we used the U-stacks with the option settings of ‘minimum depth of coverage required to create a stack ( $m$ )’ = 3, ‘maximum distance allowed between stacks ( $M$ )’ = 1, ‘maximum distance allowed to align secondary reads to primary stacks ( $N$ )’ = 1, and the deleveraging (d) and removal (r) algorithms enabled. Secondly, we used the C-stacks with the option ‘number of mismatches allowed between sample loci when build the catalog ( $n$ )’ = 4, followed by the S-stacks. To confirm the consistency of the results using different sets of SNPs with different amounts of missing data, we first created three different SNP sets using population software implemented in Stacks v. 1.4 by restricting the data analysis to different criteria: (i) the minimum percentage of individuals required to process a locus across all data ( $r$ ) was set at 70% and restricting data analysis to a single SNP per locus, (ii)  $r$  was set at 50% and a single SNP per locus was used, and (iii)  $r$  was set at 50% and all SNPs per locus were used. Confirming that all the results were consistent irrespective of the data sets, we only showed the results using (i)  $r$ , 70%, and single SNP per locus. For all of the above analyses, we set the following parameters: the minimum number of populations that a locus must be present in to process a locus ( $p$ )’ = 1, the minimum minor allele frequency required to process a nucleotide site at a locus ( $\text{min\_maf}$ ) = 0.01, the maximum observed heterozygosity required to process a nucleotide site at a locus ( $\text{max\_obs\_het}$ ) = 0.9. BayeScan v 2.0 was used to detect possible SNPs under natural selection assuming two morphological species with a default setting.

A Bayesian individual-based assignment approach as implemented in STRUCTURE 2.3.4 was used to examine the genetic boundaries between *P. elatius* and *P. konojoi* individuals. Twenty independent runs were performed in STRUCTURE using an admixture model and allele frequency correlated model without any morphological priors. Both the length of the burn-in period and the number of Markov Chain Monte Carlo analyses (MCMC) were 200,000. We estimated  $l_{rtri} K$  (Evanno, Regnaut & Goudet, 2005), the most likely number of clusters using STRUCTURE HARVESTER (Earl & vonHoldt, 2012), CLUMPAK (Kopelman et al., 2015), and DISTRUCT (Rosenberg, 2004) to summarize and visualize the STRUCTURE results. In addition, individual-based principle coordinate analysis (PCoA) was performed using GeneAlex ver. 6.5 to visualize the genetic relationship among different individuals in 2 dimensions. Data files were converted to each software using PGDspider ver 2.0.8.3 (Lischer & Excoffier, 2011).

## RESULTS

### MtDNA analysis

A total of 961 bp (456 bp IGR1 sequences and 505 bp MutS after trimming unreliable sequences) from 25 individuals (13 *P. elatius* and 12 *P. konojoi*) were obtained and concatenated to reconstruct the phylogenetic tree (Fig. 1). The genetic diversity of the concatenated sequences for *P. elatius* and *P. konojoi* was low, with only three haplotypes with two polymorphic sites, including one gap, uncovered across 25 sequences in the concatenated sequence. The haplotype diversity ( $h$ ) was 0.453 and nucleotide diversity ( $\pi$ )



**Figure 1** MtDNA haplotype network considering gap regions (A) and maximum likelihood phylogenetic tree excluding gap regions (B). *P. elatus* (PE) is shown in pink and *P. konojoi* (PK) is shown in black/white. (A) The size of the circle represents the number of haplotypes found in the analysis. (B) Only the nodes with bootstrap values (>50) were indicated.

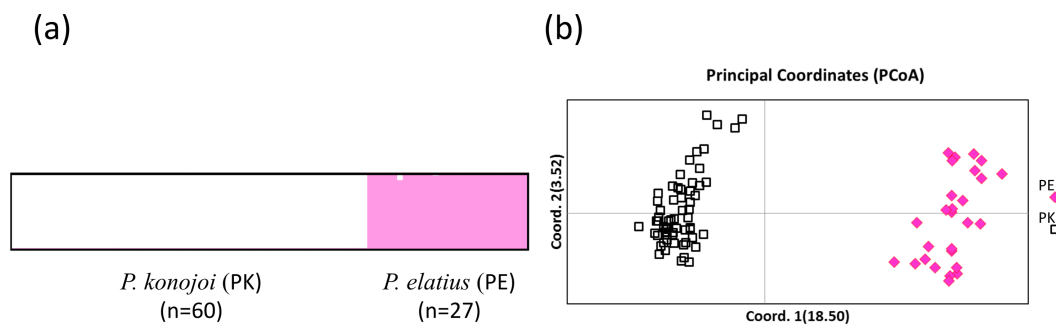
Full-size [DOI: 10.7717/peerj.7769/fig-1](https://doi.org/10.7717/peerj.7769/fig-1)

was 0.00047. The haplotype network analysis revealed *P. elatus* and *P. konojoi* shared a major haplotype (Fig. 1A). Four out of 12 *P. konojoi* individuals shared a major haplotype with *P. elatus* and all the *P. elatus* individuals shared the major haplotype with *P. konojoi*. The reconstructed phylogenetic tree indicated that the two morphological species are not monophyletic (Fig. 1B). *P. konojoi* included one polymorphic site and one gap site in IGR1 and no polymorphic sites in MutS regions, while All *P. elatus* shared a single haplotype at both loci.

### MIG-seq analysis

In total, 25,444,986 raw reads with an average of 292,471 reads per sample were obtained for 87 individuals by MIG-seq analysis, of which 25,241,178 reads remained after filtering out low quality reads. We obtained 16,011,472 reads with an average of 184,039 reads per individual after two step filtering. The three SNP data sets created using different criteria resulted in a different number of loci: (i)  $r = 0.7$  and only a single SNP per locus resulted in 223 loci, (ii)  $r = 0.5$  and only a single SNP per locus resulted in 762 SNPs, and (iii)  $r$  was set at 0.5 and all SNPs per locus resulted in 2251 SNPs. All data sets indicated consistent STRUCTURE and PCoA results, regardless of the different ratio of missing data and possible linkage disequilibrium (Supplemental Information 1).

BayeScan indicated that all the loci were neutral ( $q$ -values >0.05). Among the 223 SNPs examined, 12 SNPs indicated species-specific alleles (fixed substitution between the species) that could be observed.



**Figure 2** STRUCTURE (A) and PCoA result (B). (A)  $K = 2$  with Mean (LnProb) =  $-5666.970$  and Mean (similarity score) among 10 runs =  $0.999$  and PCoA results using 223 SNPs data obtained by MIG-seq analysis (B).  $X$  axis indicates 18.5% and  $Y$  axis indicates 3.52% of the data. PK and PE represent *P. konojoi* and, *P. elatius* respectively.

Full-size DOI: [10.7717/peerj.7769/fig-2](https://doi.org/10.7717/peerj.7769/fig-2)

Both STRUCTURE and PCoA indicated the same patterns in all of the SNPs sets; *P. elatius* and *P. konojoi* are genetically distinct. Calculation of  $l_{rtri} K$  of the STRUCTURE results indicated that  $K = 2$  best explained the data with a mean likelihood =  $-5,666.970$  and mean similarity score among 10 independent runs =  $0.999$ . Clear genetic differences corresponded with the morphological differences without any genetically admixed individuals (Fig. 2A). PCoA indicated two morphological species are clearly separated by the  $x$ -axis, which explains 18.5% of the data (Fig. 2B).

## DISCUSSION

Japan has been the main exporter of the precious corals to mainland China. The increased demand of the precious corals in mainland China in recent years resulted in elevated prices for raw corals, and promoted illegal fishing and overexploitation. Precise harvest data for precious corals is currently unavailable due to the inconsistent application of CITES listings, unreported trade as personal or household effects, and illegal and unreported trade. Under these circumstances, having species-specific customs codes for CITES would be necessary to obtain accurate trade data for conservation (Shiraishi, 2018).

Previously, *P. elatius* and *P. konojoi* were considered morphologically different; traditional genetic analysis using mtDNA and nuclear elongation factor region (Tu, Dai & Jeng, 2015) did not indicate their monophyly and thus they have been genetically indistinguishable. In the present study, we confirmed that *P. elatius* and *P. konojoi* share a same haplotype (Fig. 1), which is consistent with the previous study. MIG-seq analysis, however, successfully discriminated *P. elatius* from *P. konojoi*. PCoA and STRUCTURE results indicated that the two species are clearly different with no intermediate genotypes, indicating no current hybridization between the two species. It is possible that extremely slow substitution rates of mtDNA of *P. elatius* and *P. konojoi* resulted in non-reciprocal monophyly due to the maintenance of an ancestral shared variation presented at the time of divergence. On the other hand, it is possible that a strong purifying selection could encourage them to split to reciprocal monophyly in nuclear DNA, as the MIG-seq analysis



suggested more than 5% of the loci showed fixed substitution between *P. elatius* and *P. konojoi*, while BayeScan indicated all MIG-seq loci are all neutral.

This study demonstrated that *P. elatius* and *P. konojoi* are indeed different species without any hybridization or on-going gene flow consistent with morphological differences, and therefore require separate conservation management plans since *P. elatius* populations cannot be replenished by *P. konojoi* populations. *P. elatius* made up 20.6% of the total catch of precious corals in Japan from 1904 to 1920. Currently, this has dropped to 2.0% because the biomass of *P. elatius* has been dramatically depleted due to overfishing ([Iwasaki, 2018](#)); thus, there is an urgent need to devise and implement conservation strategies for *P. elatius*.

This study highlighted the effectiveness of the MIG-seq analysis using the high throughput sequencing technology for delimiting octocoral species. This study, as well as a previous study on shallow water octocoral species, demonstrated that MIG-seq analysis can uncover genetic lineages that are undetectable when using mtDNA or ITS2 ([Richards et al., 2018](#)). MIG-seq provides a time-saving (3 days at shortest), simple (two PCR steps), and economical (15 US dollars per sample) approach that is applicable even for small amounts of degraded or valuable samples for SNP genotyping. Data comparison among different species or genera is easy as the MIG-seq always uses the same multiplex primer sets, which would also be suitable for nuclear barcoding among different species. Further application of MIG-seq analysis to a wider range of octocoral taxa would help to clarify the unsolved status of closely related species.

## CONCLUSIONS

This study indicated that *P. elatius* and *P. konojoi* are different species and that both species should be conserved separately. The results highlighted the importance of conservation of these two species, especially *P. elatius*, which has been dramatically depleted in the past 100 years. Again, it does suggest that separate conservation strategies will be required for the two different morphospecies. This study also demonstrated the effectiveness and robustness of MIG-seq for delimiting closely related octocoral species that were previously indistinguishable when using traditional genetic markers (mtDNA and EF). Further application of MIG-seq analysis for a wider range of octocoral or other taxa would aid in verifying the robustness of MIG-seq analysis on species delimitation.

## ACKNOWLEDGEMENTS

We are grateful to Mr. Masao Nakano, Yoshihiko Niiya, Katsuhiko Fujita for collecting samples in Kochi. We thank Mr. Hideaki Yuasa, Ms. Akemi Yoshida for their help in the analysis. Computations were partially performed on the NIG supercomputer at ROIS National Institute of Genetics.

## ADDITIONAL INFORMATION AND DECLARATIONS

### Funding

This study was supported by the Japan Society for the Promotion of Science (JSPS) Grant-in-aid for young scientists (A) (17H04996), 16H04722, a Grant-in-Aid for Research Fellows (201921342), and the Sumitomo Foundation Fiscal 2018 Grant for Environmental Research Projects and the Program to Disseminate Tenure Tracking System from the Ministry of Education, Culture, Sports, Science and Technology (MEXT). Additional support was granted by the Japan Society for the Promotion of Science (JSPS) KAKENHI (Grant Number 16H04722). The funders had no role in study design, data collection and analysis, decision to publish, or preparation of the manuscript.

### Grant Disclosures

The following grant information was disclosed by the authors:

Japan Society for the Promotion of Science (JSPS): 17H04996, 16H04722.

Grant-in-Aid for Research Fellows: 201921342.

Environmental Research Projects.

Program to Disseminate Tenure Tracking System from the Ministry of Education, Culture, Sports, Science and Technology (MEXT).

Japan Society for the Promotion of Science (JSPS) KAKENHI: 16H04722.

### Competing Interests

The authors declare there are no competing interests.

### Author Contributions

- Kenji Takata performed the experiments, analyzed the data, prepared figures and/or tables, authored or reviewed drafts of the paper, approved the final draft.
- Hiroki Taninaka analyzed the data, approved the final draft.
- Masanori Nonaka and Fumihito Iwase conceived and designed the experiments, contributed reagents/materials/analysis tools, approved the final draft.
- Taisei Kikuchi, Yoshihisa Suyama and Satoshi Nagai analyzed the data, contributed reagents/materials/analysis tools, approved the final draft.
- Nina Yasuda conceived and designed the experiments, contributed reagents/materials/analysis tools, authored or reviewed drafts of the paper, approved the final draft.

### Field Study Permissions

The following information was supplied relating to field study approvals (i.e., approving body and any reference numbers):

Samples were collected under the Kochi Prefecture sampling permit numbers Sa 401, Sa 412, and Sa 423. Other samples were from sample collections in Okinawa Churaumi Aquarium.

### Data Availability

The following information was supplied regarding data availability:

All specimens and the accession numbers are available in the [Supplemental files](#). mtDNA data is available at DDBJ: [LC464485-LC464516-LC475110-LC475134](#). MIG-seq data is available at NCBI: [PRJDB8153](#), BioSample: [SAM00166505-SAM00166591](#), and DRA: [DRX168319-DRX168404](#) (Experiment), [DRR177792-DRR177878](#) (RUN): <https://ddbj.nig.ac.jp/DRAsearch/submission?acc=DRA008354>.

### Supplemental Information

Supplemental information for this article can be found online at <http://dx.doi.org/10.7717/peerj.7769#supplemental-information>.

## REFERENCES

- Ardila NE, Giribet G, Sánchez JA. 2012.** A time-calibrated molecular phylogeny of the precious corals: reconciling discrepancies in the taxonomic classification and insights into their evolutionary history. *BMC Evolutionary Biology* **12**:246 DOI [10.1186/1471-2148-12-246](https://doi.org/10.1186/1471-2148-12-246).
- Baird NA, Etter PD, Atwood TS, Currey MC, Shiver AL, Lewis ZA, Selker EU, Cresko WA, Johnson EA. 2008.** Rapid SNP discovery and genetic mapping using sequenced RAD markers. *PLOS ONE* **3**:e3376 DOI [10.1371/journal.pone.0003376](https://doi.org/10.1371/journal.pone.0003376).
- Bandelt HJ, Forster P, Rohl A. 1999.** Median-joining networks for inferring intraspecific phylogenies. *Molecular Biology and Evolution* **16**:37–48 DOI [10.1093/oxfordjournals.molbev.a026036](https://doi.org/10.1093/oxfordjournals.molbev.a026036).
- Bilewitch J, Degnan S. 2011.** A unique horizontal gene transfer event has provided the octocoral mitochondrial genome with an active mismatch repair gene that has potential for an unusual self-contained function. *BMC Evolutionary Biology* **11**:228 DOI [10.1186/1471-2148-11-228](https://doi.org/10.1186/1471-2148-11-228).
- Catchen JM, Amores A, Hohenlohe P, Cresko W, Postlethwait JH. 2011.** Stacks: building and genotyping loci de novo from short-read sequences. *G3: Genes, Genomes, Genetics* **1**:171–182 DOI [10.1534/g3.111.000240](https://doi.org/10.1534/g3.111.000240).
- Catchen J, Hohenlohe PA, Bassham S, Amores A, Cresko WA. 2013.** Stacks: an analysis tool set for population genomics. *Molecular Ecology* **22**:3124–3140 DOI [10.1111/mec.12354](https://doi.org/10.1111/mec.12354).
- Chen CS. 2012.** Management of the precious coral fishery in Taiwan: progress and perspectives. *Marine Policy* **36**:623–629 DOI [10.1016/j.marpol.2011.10.016](https://doi.org/10.1016/j.marpol.2011.10.016).
- CITES-Netherlands. 2007.** Inclusion of all species in the genus *Corallium* in Appendix II of CITES. This taxon comprises 26 closely related species. Consideration of proposals for Amendment of Appendices I and II. CITES CoP14 Inf. 36 p1. Available at <https://www.cites.org/sites/default/files/common/cop/14/inf/E14i-36.pdf> (accessed on 15 January 2019).
- CITES-Qatar. 2009.** Consideration of proposals for amendment of appendices I and II. CITES CoP15 Prop. 21, p 1. Available at <https://www.cites.org/sites/default/files/eng/cop/15/prop/E-15-Prop-21.pdf> (accessed on 15 January 2019).

- Clark MR, Rowden AA. 2009.** Effect of deepwater trawling on the macro-invertebrate assemblages of seamounts on the Chatham Rise, New Zealand. *Deep Sea Research Part I: Oceanographic Research Papers* **56**:1540–1554 DOI [10.1016/j.dsr.2009.04.015](https://doi.org/10.1016/j.dsr.2009.04.015).
- De Queiroz K. 2007.** Species concepts and species delimitation. *Systematic Biology* **56**:879–886 DOI [10.1080/10635150701701083](https://doi.org/10.1080/10635150701701083).
- Earl DA, vonHoldt BM. 2012.** STRUCTURE HARVESTER: a website and program for visualizing STRUCTURE output and implementing the Evanno method. *Conservation Genetics Resources* **4**:359–361 DOI [10.1007/s12686-011-9548-7](https://doi.org/10.1007/s12686-011-9548-7).
- Evanno G, Regnaut S, Goudet J. 2005.** Detecting the number of clusters of individuals using the software STRUCTURE: a simulation study. *Molecular Ecology* **14**:2611–2620 DOI [10.1111/j.1365-294X.2005.02553.x](https://doi.org/10.1111/j.1365-294X.2005.02553.x).
- Figueroa DF, Baco AR. 2014.** Octocoral mitochondrial genomes provide insights into the phylogenetic history of gene order rearrangements, order reversals, and cnidarian phylogenetics. *Genome Biology and Evolution* **7**:391–409 DOI [10.1093/gbe/evu286](https://doi.org/10.1093/gbe/evu286).
- France SC, Hoover IL. 2002.** DNA sequences of the mitochondrial COI gene have low levels of divergence among deep-sea octocorals (Cnidaria: Anthozoa). *Hydrobiologia* **471**:149–155 DOI [10.1023/A:1016517724749](https://doi.org/10.1023/A:1016517724749).
- Gordon A, Hannon GJ. 2012.** FASTX-Toolkit. FASTQ/A short-reads pre-processing tools (unpublished). Available at [http://hannonlab.cshl.edu/fastx\\_toolkit/](http://hannonlab.cshl.edu/fastx_toolkit/).
- Gupta M, Chyi YS, Romero-Severson J, Owen JL. 1994.** Amplification of DNA markers from evolutionarily diverse genomes using single primers of simple-sequence repeats. *Theoretical and Applied Genetics* **89**:998–1006.
- Hall T. 1999.** BioEdit: a user-friendly biological sequence alignment editor and analysis program for Windows 95/98/NT. *Nucleic Acids Symposium Series* **41**:95–98.
- Hellberg ME. 2006.** No variation and low synonymous substitution rates in coral mtDNA despite high nuclear variation. *BMC Evolutionary Biology* **6**:24 DOI [10.1186/1471-2148-6-24](https://doi.org/10.1186/1471-2148-6-24).
- Herrera S, Shank TM. 2016.** RAD sequencing enables unprecedented phylogenetic resolution and objective species delimitation in recalcitrant divergent taxa. *bioRxiv*. 1–44.
- Iwasaki N. 2018.** Housekisango no jijokuteki riyou. *Seibutsu No Kagaku Iden* **72**(3):214–220.
- Kopelman NM, Mayzel J, Jakobsson M, Rosenberg NA, Mayrose I. 2015.** CLUMPAK: a program for identifying clustering modes and packaging population structure inferences across K. *Molecular Ecology Resources* **15**:1179–1191 DOI [10.1111/1755-0998.12387](https://doi.org/10.1111/1755-0998.12387).
- Kumar S, Stecher G, Tamura K. 2016.** MEGA 7: molecular evolutionary genetics analysis version 7.0 for Bigger Datasets. *Molecular Biology and Evolution* **33**:1870–1874 DOI [10.1093/molbev/msw054](https://doi.org/10.1093/molbev/msw054).
- Librado P, Rozas J. 2009.** DnaSP v5: a software for comprehensive analysis of DNA polymorphism data. *Bioinformatics* **25**:1451–1452 DOI [10.1093/bioinformatics/btp187](https://doi.org/10.1093/bioinformatics/btp187).

- Lischer HE, Excoffier L. 2011. PGDSpider: an automated data conversion tool for connecting population genetics and genomics programs. *Bioinformatics* 28:298–299 DOI 10.1093/bioinformatics/btr642.
- Luan NT, Rahman MA, Maki T, Iwasaki N, Hasegawa H. 2013. Growth characteristics and growth rate estimation of Japanese precious corals. *Journal of Experimental Marine Biology and Ecology* 441:117–125 DOI 10.1016/j.jembe.2013.01.012.
- Martin M. 2011. Cutadapt removes adapter sequences from high-throughput sequencing reads. *EMBnet Journal* 17:10–12 DOI 10.14806/ej.17.1.200.
- McFadden CS, Benayahu Y, Pante E, Thoma JN, Nevarez PA, France SC. 2011. Limitations of mitochondrial gene barcoding in Octocorallia. *Molecular Ecology Resources* 11:19–31 DOI 10.1111/j.1755-0998.2010.02875.x.
- Meeker ND, Hutchinson SA, Ho L, Trede NS. 2007. Method for isolation of PCR-ready genomic DNA from zebrafish tissues. *Biotechniques* 43:610–614 DOI 10.2144/000112619.
- Miller MR, Dunham JP, Amores A, Cresko WA, Johnson EA. 2007. Rapid and cost-effective polymorphism identification and genotyping using restriction site associated DNA (RAD) markers. *Genome Research* 17:240–248 DOI 10.1101/gr.5681207.
- Nei M. 1987. *Molecular evolutionary genetics*. New York: Columbia University Press.
- Nonaka M, Muzik K. 2009. Recent harvest records of commercially valuable precious corals in the Ryukyu Archipelago. *Marine Ecology Progress Series* 397:269–278 DOI 10.1155/2012/519091.
- Nonaka M, Nakamura M, Muzik K. 2015. Sexual reproduction in precious corals (Coralliidae) collected in the Ryukyu Archipelago. *Pacific Science* 69:15–46.
- Nonaka M, Nakamura M, Tsukahara M, Reimer JD. 2012. Histological examination of precious corals from the Ryukyu Archipelago. *Journal of Marine Biology* 2012:Article 519091 DOI 10.1155/2012/519091.
- Pante E, Abdelkrim J, Viricel A, Gey D, France S, Boisselier MC, Samadi S. 2014. Use of RAD sequencing for delimiting species. *Heredity* 114:450–459 DOI 10.1038/hdy.2014.105.
- Pante E, France SC, Couloux A, Cruaud C, McFadden CS, Samadi S, Watling L. 2012. Deepsea origin and in-situ diversification of chrysogorgiid octocorals. *PLOS ONE* 7:e38357 DOI 10.1371/journal.pone.0038357.
- Quattrini AM, Etnoyer PJ, Doughty C, English L, Falco R, Remon N, Rittinghouse M, Cordes EE. 2014. A phylogenetic approach to octocoral community structure in the deep Gulf of Mexico. *Deep Sea Research Part II: Topical Studies in Oceanography* 99:92–102 DOI 10.1016/j.dsr2.2013.05.027.
- Richards ZT, Yasuda N, Kikuchi T, Foster T, Mitsuyuki C, Stat M, Suyama Y, Wilson NG. 2018. Integrated evidence reveals a new species in the ancient blue coral genus *Heliopora* (Octocorallia). *Scientific Reports* 8:15875 DOI 10.1038/s41598-018-32969-z.
- Roberts JM, Wheeler AJ, Freiwald A. 2006. Reefs of the deep: the biology and geology of cold-water coral ecosystems. *Science* 312:543–547 DOI 10.1126/science.1119861.
- Rosenberg NA. 2004. DISTRUCT: a program for the graphical display of population structure. *Molecular Ecology Notes* 4:137–138 DOI 10.1046/j.1471-8286.2003.00566.x.

- Shiraishi H. 2018.** Seeing red. Precious coral trade in Asia. Traffic report. Available at <https://www.traffic.org/site/assets/files/11127/seeing-red.pdf>.
- Suyama Y, Matsuki Y. 2015.** MIG-seq: an effective PCR-based method for genome-wide single-nucleotide polymorphism genotyping using the next-generation sequencing platform. *Scientific Reports* 5:16963 DOI 10.1038/srep16963.
- Tamura K. 1992.** Estimation of the number of nucleotide substitutions when there are strong transition-transversion and G+C-content biases. *Molecular Biology and Evolution* 9:678–687 DOI 10.1093/oxfordjournals.molbev.a040752.
- Torrents O, Garrabou J, Marschal C, Harmelin JG. 2005.** Age and size at first reproduction in the commercially exploited red coral *Corallium rubrum* (L.) in the Marseilles area (France, NW Mediterranean). *Biological Conservation* 121:391–397 DOI 10.1016/j.biocon.2004.05.010.
- Tu TH, Dai CF, Jeng MS. 2015.** Phylogeny and systematics of deep-sea precious corals (Anthozoa: Octocorallia: Coralliidae). *Molecular Phylogenetics and Evolution* 84:173–184 DOI 10.1016/j.ympev.2014.09.031.
- Zietkiewicz E, Rafalski A, Labuda D. 1994.** Genome fingerprinting by simple sequence repeat (SSR)-anchored polymerase chain reaction amplification. *Genomics* 20:176–183 DOI 10.1006/geno.1994.1151.