

CORRIGENDUM

Tobias Granberg, Qiuyun Fan, Constantina Andrada Treaba, Russell Ouellette, Elena Herranz, Gabriel Mangeat, Céline Louapre, Julien Cohen-Adad, Eric C. Klawiter, Jacob A. Sloane and Caterina Mainero. **In vivo characterization of cortical and white matter neuroaxonal pathology in early multiple sclerosis.** *Brain* 2017; 140: 2912-2926; doi:10.1093/brain/awx247.

The authors would like to apologize for a labelling error in Figure 3, which should have appeared as follows:

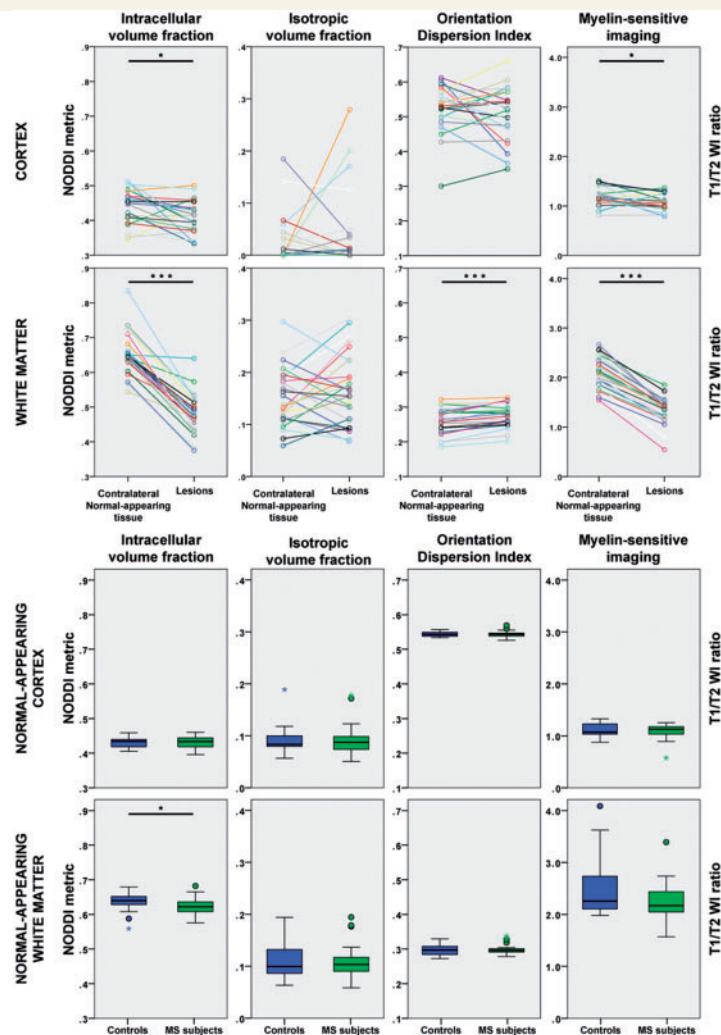


Figure 3 NODDI and myelin-sensitive imaging metrics in the cortex and in the white matter of early stage multiple sclerosis subjects and healthy controls. * $P < 0.05$; *** $P < 0.001$. MS = multiple sclerosis; WI = weighted imaging.

This has now been corrected online.