

Original Research Article

## Cytotoxic activity of caffeic acid and gallic acid against MCF-7 human breast cancer cells: An *in silico* and *in vitro* study

Hasan Rezaei-Seresht<sup>1</sup>, Hamid Cheshomi<sup>2,3,\*</sup>, Farahnaz Falanji<sup>2</sup>, Fatemeh Movahedi-Motlagh<sup>2,4</sup>, Maryam Hashemian<sup>5,6</sup>, Erfan Mireskandari<sup>7</sup>

<sup>1</sup>Traditional and Complementary Medicine Research Center, Sabzevar University of Medical Sciences, Sabzevar, Iran

<sup>2</sup>Cellular and Molecular Research Center, Faculty of Medicine, Sabzevar University of Medical Sciences, Sabzevar, Iran

<sup>3</sup>Department of Biology, Faculty of Science, Ferdowsi University of Mashhad, Mashhad, Iran

<sup>4</sup>Department of Medical Genetics, Tehran University of Medical Sciences, Tehran, Iran

<sup>5</sup>Department of Nutrition, Faculty of Medicine, Sabzevar University of Medical Sciences, Sabzevar, Iran

<sup>6</sup>Digestive Oncology Research Center, Digestive Diseases Research Institute, Tehran University of Medical Sciences, Tehran, Iran

<sup>7</sup>Department of Chemistry, School of Sciences, Hakim Sabzevari University, Sabzevar, Iran

### Article history:

Received: Nov 16, 2018

Received in revised form:

May 27, 2019

Accepted: Jun 25, 2019

Vol. 9, No. 6, Nov-Dec 2019,  
574-586.

### \* Corresponding Author:

Tel: +9177948974

Fax: +985138796416

Hamid.ch65@gmail.com

### Keywords:

Caffeic acid

Gallic acid

MCF-7

P53

P21

Mcl-1

### Abstract

**Objective:** Phenolic compounds have been considered inhibitors of various cancers.

**Material and Methods:** In this study, caffeic acid and gallic acid were appraised for their possible effects on apoptotic genes expression in a breast cancer cell line *in vitro*. We also evaluated ligand interaction and ligand binding with estrogen receptor alpha by molecular docking. To determine half maximal inhibitory concentration, MCF-7 cells were treated with different concentrations of caffeic acid and gallic acid by 3-(4, 5-dimethylthiazol-2-yl)-2, 5-diphenyltetrazolium bromide assay. Furthermore, morphological changes in cells and alterations in *P53*, *Mcl-1* and *P21* gene expression were studied by real-time RT-PCR. Also, protein network and different interactions between the desired genes were analyzed using GeneMANIA database.

**Results:** Evaluation of cell survival by MTT assay revealed that the half-maximal inhibitory concentration values for caffeic acid and gallic acid against MCF-7 cells, were 159 and 18 µg/ml, respectively. These compounds were found to affect *P53*, *Mcl-1* and *P21* gene expression; this alteration in gene expression probably occurred along with the activation of intrinsic apoptotic signaling pathway.

**Conclusion:** Via apoptosis induction, caffeic acid and gallic acid have induce toxic effects and morphological changes in breast cancer cells, suggesting their possible future application as antitumor agents.

Please cite this paper as:

Rezaei-Seresht H, Cheshomi H, Falanji F, Movahedi-Motlagh F, Hashemian M, Mireskandari E. Cytotoxic activity of caffeic acid and gallic acid against MCF-7 human breast cancer cells: An *in silico* and *in vitro* study. Avicenna J Phytomed, 2019; 9(6): 574-586. DOI: 10.22038/AJP.2019.13475

## Introduction

Breast cancer is the most common cause of cancer mortality (Brewster *et al.*, 2014), with more than one million annual new cases of breast cancer diagnosed around the world (Miller *et al.*, 2016). Breast cancer incidence differs across geographic locations, and the pattern of cancer incidence among migrating populations has been shown to resemble the host country. This suggests that there exist non-genetic, potentially modifiable lifestyle factors such as diet that may affect cancer development (Rosendahl *et al.*, 2015).

Human and animal studies have revealed the roles of estrogen receptor (ER) in female and male sexual development and behavior, reproductive function, regulation of the neuroendocrine and cardiovascular systems and bone metabolism (Korach *et al.*, 2003). The loss of ER $\alpha$  gene expression is a key factor in breast cancer progression, and it is associated with a more aggressive tumor phenotype and loss of sensitivity to endocrine therapy drugs such as tamoxifen (Singh *et al.*, 2003), the most widely used anti-estrogen in clinical practice (Kurokawa and Arteaga, 2001; Zheng *et al.*, 2015). However, tamoxifen is a commercially available drug, which binds the estrogen receptor and blocks its function and prevents the proliferation of breast cells.

Some of the most potent antiapoptotic factors influencing ER $\alpha$  expression and cancer cell survival, are the members of the *Bcl-2* gene family, including *myeloid cell leukemia-1* (*Mcl-1*). The oncogene *Mcl-1* is involved in hematogenous and solid tumor cell survival (Beroukhi *et al.*, 2010). Down-regulation of *Mcl-1* is essential, but not sufficient, for apoptosis initiation (Pietrzak and Puzianowska-Kuznicka, 2008).

Many chemotherapeutic agents promote the expression of pro-apoptotic molecules such as P53 (Halazonetis *et al.*, 2008), which regulates cellular stress via death receptor- and mitochondria-mediated apoptotic pathways (Vousden, 2000).

The expression of some molecular markers such as *P21* in cancer cells determines their tumorigenic potential (Hanahan and Weinberg, 2000). *P21*<sup>WAF1/CIP</sup> regulates cell cycle progression and acts as a general inhibitor of cyclin-dependent kinases (Yan *et al.*, 2015). Lack of *P21* entails tumorigenesis along with other oncogenic mutations (Martín-Caballero *et al.*, 2001; Poole *et al.*, 2004; Yang *et al.*, 2005). However, it was found that *P21* can negatively impact the activity of other positive regulators of the cell cycle, and the increasing expression of *P21* in tumor cells is a challenge to “braking” the procedure of cellular proliferation at the G1 checkpoint (Thor *et al.*, 2000). The capacity of *P21* to promote cell cycle inhibition may depend on its capability to mediate P53-dependent gene suppression, as *P21* is both essential and sufficient for P53-dependent repression of genes regulating cell cycle progression (Löhr *et al.*, 2003). Paradoxically, *P21* might promote apoptosis through both P53-dependent and P53-independent mechanisms under definite cellular stresses. The primary role of optimal anticancer agents is to kill tumor cells by triggering apoptosis signaling pathways (Tabuchi *et al.*, 2009).

Phenolic acids such as caffeic acid (CA) (3, 4-dihydroxycinnamic acid) and gallic acid (GA) (3, 4, 5-trihydroxybenzoic acid) found in fruits, coffee and vegetables are potential anticancer, anti-inflammatory, antimicrobial, immunoregulatory, and antioxidant compounds (Rao *et al.*, 2006; Olsen *et al.*, 2009). Mechanisms suggested for their anticancer effects include stimulation of P53 and *P21* gene expression and inhibition of CDK2 gene expression, which may lead to G0/G1 arrest in the cell cycle. Although recent studies have implicated these compounds in the development of a variety of cancers, the underlying mechanisms are yet to be elucidated (Skehan *et al.*, 1990; Chang *et al.*, 2002; Han *et al.*, 2002; Ye *et al.*, 2010; Nabavi *et al.*, 2013).

The objective of this study was to simultaneously study the anti-breast cancer

effects of gallic acid and caffeic acid, as two important phenolic compounds, on the MCF-7 cell line. In addition, the effects of these compounds were investigated, for the first time, on *P53*, *P21* and *Mcl-1* gene expression in an ER $\alpha$ -positive breast cancer cell line *in silico* and *in vitro*, simultaneously. For the first time, we focused on the intrinsic apoptotic signaling pathway, as a major apoptosis pathway, and the relationship between these genes and tested compounds. Therefore, to explore mechanisms associated with CA- and GA-induced modulation of breast carcinogenesis, we assessed the ligand interaction and binding mode of these compounds with ER $\alpha$  using molecular docking, analyzed associated protein networks and gene interactions using GeneMANIA database, and investigated their effects on hormone receptor positive breast cancer cells (MCF-7), morphological alteration and proliferation by MTT (3-(4, 5-Dimethylthiazol-2-yl)-2, 5-diphenyltetrazolium bromide) assay. Ultimately, using real-time RT-PCR, we measured the effects of CA and GA on the expression of apoptotic genes, including *P53*, *Mcl-1* and *P21* in MCF-7 cell line.

## Materials and Methods

### Reagents

CA and GA with the chemical structure shown in Figure 5A, dimethyl sulfoxide (DMSO), ethylene dinitrile tetra acetic acid (EDTA), 3-(4, 5-dimethylthiazol-2-yl)2, 5-diphenyltetrazoliumbromide (MTT), penicillin–streptomycin and trypsin were purchased from Sigma-Aldrich (USA). FBS and RPMI-1640 medium were purchased from Gibco (Scotland), and tamoxifen bought from Sigma-Aldrich (USA) and was used as a control drug.

### Molecular docking

The molecular docking of all compounds was done into the three-dimensional X-ray structure (PDB code: 3ERT). The AutoDock 4.2 software was used for the docking studies. This

automated method is useful for studying the binding mode of ligands binding to biomacromolecules. The three-dimension structures of ligand molecules were built, optimized (PM3), and saved in PDB format using the molecular modeling program SPARTAN (Wavefunction Inc.). All non-protein atoms were deleted, and AutoDockTools was used for creating PDBQT files from primary PDB files. A grid box was constructed around the binding site of protein with number of grid points [npts]: X:60, Y:60, and Z:60 in the three dimensions, coordinates of three dimensions [gridcenter]: X:121.952, Y:90.314, and Z:5.066, and spacing of 0.375. Hydrogen atoms and Gasteiger partial charges were added using AutoDockTools (Ver. 4.2). In the present docking study, the Lamarckian genetic algorithm (LGA) method, implemented in the program AutoDock 4.2, was employed. All default docking parameters were maintained except for the maximum number of energy evaluations [ga\_nim\_evals] that was changed to  $2.5 \times 10^6$  and the number of runs [ga\_run] altered to 100. AutoDockTools includes several methods for analyzing the results of docking simulations, including tools for clustering the results by conformational similarity, and visualizing conformations, interactions between ligands and proteins, and the affinity potentials created by AutoGrid. Results were visualized via PyMol (<http://www.pymol.org>).

### Preparation of compounds solutions

To prepare different concentrations of CA and GA (5, 10, 30, 50, 75, 100, 130, 170, and 200  $\mu\text{g/ml}$ ), 2 mg of each compound was dissolved in 100  $\mu\text{l}$  dimethyl sulfoxide and diluted with complete culture medium before the experiments. To better evaluate the various treatments, the viability of each group was compared with its relevant control containing equal amounts of DMSO.

### Culture of MCF-7 cells

The human breast cancer cell line (MCF-7) was purchased from Pasteur Institute (Tehran, Iran). The cells were cultured in RPMI1640 medium (pH 7.2-7.4), supplemented with penicillin G (100 U/ml), streptomycin (100 U/ml) and 10% fetal bovine serum (FBS), and incubated at 37°C in a humidified atmosphere with 5% CO<sub>2</sub>. Cells were routinely sub-cultured using 0.25% trypsin and 1 mM EDTA. The human primers were commercially purchased for m DENA ZIST Asia, Mashhad, Iran.

### Morphological alterations

MCF-7 cells were treated with half maximal inhibitory concentration (IC<sub>50</sub>) dose of each compound and morphological changes were observed under a light inverted microscope (Olympus, Japan) following 48 hr of treatment.

### MTT assay

The *in vitro* tetrazolium-based colourimetric assay (MTT) is a rapid method developed based on the cleavage of a yellow tetrazolium salt to purple formazan crystals by mitochondrial enzymes in metabolically active cells (Mosmann, 1983). The logarithmically growing MCF-7 cells were plated at a density of 10,000 cells/well into a 96-well plate. After 24 hr, cells were treated with CA at various concentrations (5, 10, 30, 50, 75, 100, 130, 170, and 200 µg/ml) for 48

and 72 hr. Also, the effect of tamoxifen citrate on the viability of cells was evaluated 48 and 72 hr after treatments. Next, 20 µl MTT (5 g/L) was added to each well and incubated for an additional 4 hr; then, culture media were then discarded and 150 µl DMSO was added. The absorbance was measured at 545 nm using an ELISA reader (Awareness, USA). The percentages of living cells were calculated against the controls according to the following equation for different treatments:

$$\% \text{viability of cells} = \frac{\text{the mean absorbance of treated cells in each well}}{\text{the mean absorbance of control cells (DMSO)}} \times 100.$$

### Expression of *P53*, *Mcl-1* and *P21* in MCF-7 cell line assessed by Real-time PCR

Total RNA was extracted using TRIzol reagent and used as a template for the production of cDNA which was employed in SYBR-based quantitative real-time PCR for the quantification of *P53*, *Mcl-1*, and *P21* transcript levels. QRT PCR reaction was carried out in thermocycler detection system (Bio-Rad, CFX96, USA) under the following conditions: 10 min at 95°C, 15 sec at 94°C, 30 sec at 55°C, and 30 sec at 72°C; each cycle was repeated 40 times. Primers used in this study are listed in Table 1. Using  $\Delta\Delta\text{CT}$  method, we analyzed the real time PCR data, and all experiments were performed in triplicates.

Table 1. Primers used in this study.

Gene	Forward Primer	Reverse Primer
<i>P53</i>	CCCCTCCTGGCCCTGTCATCTTC	GCAGCGCCTCACAACCTCCGTCAT
<i>Mcl-1</i>	CCAAGAAAGCTGCATCGAACCAT	CAGCACATTCTGATGCCACCT
<i>P21</i>	TGCCGAAGTCAGTTCCTTGTGG	CGCATGGGTCTGACGGACATCC
<i>GAPDH</i>	ACCCAGAAGACTGTGGATGG	TCTAGACGGCAGGTCAGGTC

### Analysis of protein network using GeneMANIA database

The GeneMANIA database, available at <http://www.genemania.org/>, calculates physical interactions, co-expression, predicted links, pathways, co-localization, genetic interactions, and shared protein domains at an expected level of accuracy. GeneMANIA database was employed to investigate the association between genes

of interest and known interacting proteins in apoptotic signaling pathways, and understand the functional interactions. We analyzed all direct interactions networks between *P53*, *Mcl-1* and *CDKN1 (P21)* genes (supplementary data). In each cluster network, display-colored lines indicate a direct link, blue lines indicate the link provided by the pathway, pink lines represent the physical interactions, and

## Cytotoxicity of caffeic acid and gallic acid in breast cancer cells

purple lines show interactions with co-expression (Figure 1).

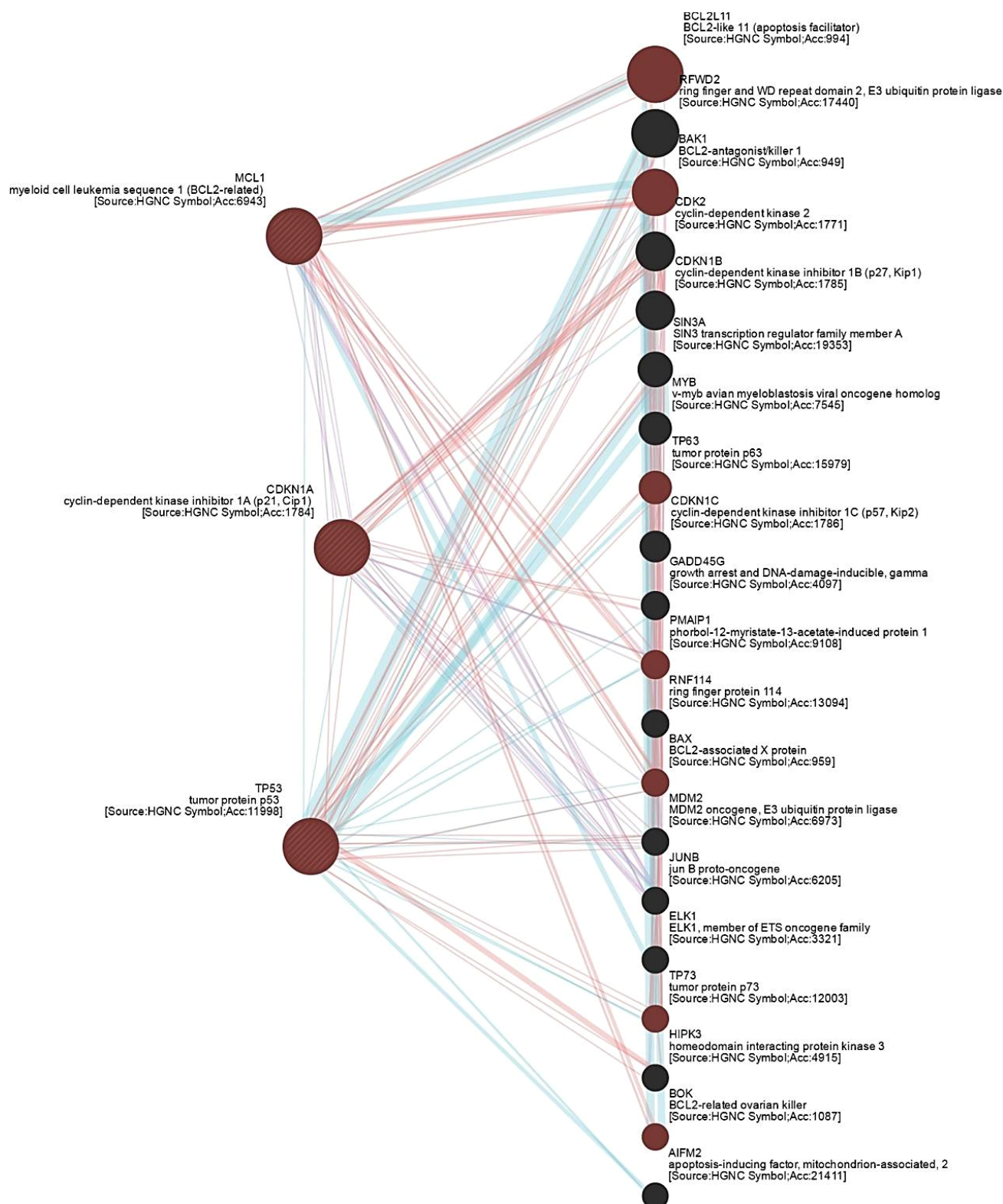


Figure 1. Network connectivity shows functional interaction between investigated genes and other genes associated with intrinsic apoptotic signaling pathway. *P53*, *Mcl-1* and *CDKN1* (*P21*) have a direct association regarding physical interactions, co-expression and signaling pathway. In each cluster network, display-colored lines indicate a direct link, blue lines indicate the link provided by the pathway, pink lines represent the physical interactions, and purple lines show interactions with co-expression. Pink circle labels the genes involved in intrinsic apoptotic signaling pathway.

### Statistical analysis

The direct networks between *P53*, *Mcl-1* and *CDKN1 (P21)* genes analyzed by GeneMANIA database. Furthermore, all data were analyzed using Kolmogorov–Smirnov test. Based on the normality test, data distribution in most experiments was normal. Differences were determined by one way ANOVA and Student's t-test (two-tailed), followed by Tukey multiple comparison test (normal data), and Mann–Whitney U test (non-normal data), using GraphPad software (Ver. 6). Values were expressed as mean±SD, and a p value less

than 0.05 was considered statistically significant.

## Results

### Molecular Docking

Table 2 summarizes ligand-protein docking scores for caffeic acid, gallic acid, and tamoxifen with molecules on ER $\alpha$ . Tamoxifen showed binding interactions with an active residue of target molecule Arginine 394 (Arg394). Docking score of tamoxifen with the ER $\alpha$  was -11.21 kcal/mol. Other properties of reference drug are given in Table 2.

Table 2. Docking scores of tamoxifen, CA and GA into ER- $\alpha$ .

Compounds	s-score <sup>a</sup> (kcal/mol)	Ki <sup>b</sup>	H-bond interaction
Tamoxifen	-11.21	61 nM	Arg-394, Glu-353
Caffeic acid	-4.47	524 nM	Arg-394, 2H-Glu353
Gallic acid	-4.2	933 nM	Arg-394, Glu-353, Leu-346

<sup>a</sup> S-score: binding free energy.

<sup>b</sup>  $K_i = e^{AG/RT}$ , R = 1.986 cal/mol.K, T = 298 K

Interactions and binding mode of caffeic acid, gallic acid, and tamoxifen with ER $\alpha$ , are illustrated in Figures 2-4. The docking results for caffeic acid and gallic acid (-4.47 kcal/mol and -4.2 kcal/mol, respectively) showed that these compounds reveals different mechanisms compared to the tamoxifen. Caffeic acid contains two hydroxyl groups in the ring that can bind ER $\alpha$ . Hydroxyl group of the *para* position of the ring binds Arg-394 and Glu-353, like tamoxifen, blocks ER functions, and prevents the proliferation of breast cells.

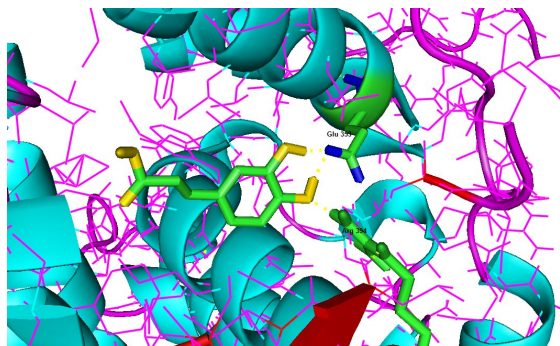


Figure 2. Ligand interaction and the binding mode of CA with human estrogen receptor alpha (entry 3ERT in the Protein Data Bank), exhibiting 2 H-bond with Glu 353 and 1 H-bond with Arg 394. The formed hydrogen bond is yellow.

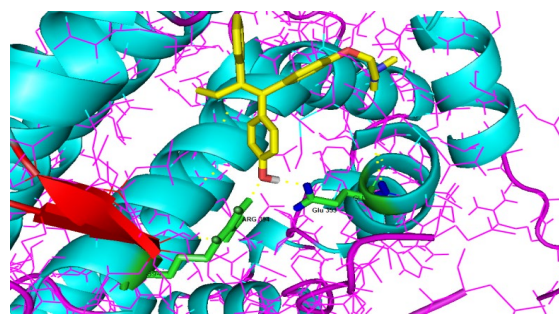


Figure 3. Ligand interaction and the binding mode of tamoxifen with human estrogen receptor alpha (entry 3ERT in the Protein Data Bank), showing 2 H-bond with Arg 394 and Glu 353. The formed hydrogen bond is yellow.

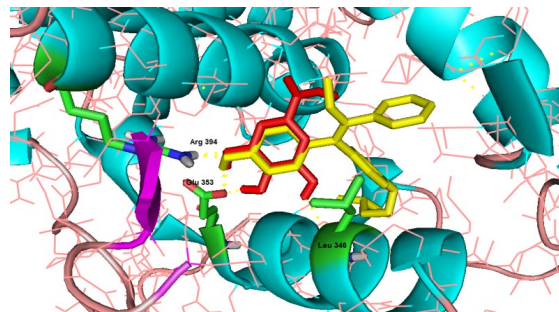


Figure 4. The binding mode of tamoxifen (yellow) and GA (red) with human estrogen receptor alpha (PDB code: 3ERT). Tamoxifen is connected to ER $\alpha$  via two H-bond (Arg 394 and Glu 353) and GA is connected to ER $\alpha$  via four H-bond with Arg 394, Leu 346, Glu 353. The hydrogen bonds are shown in yellow.

## Cytotoxicity of caffeic acid and gallic acid in breast cancer cells

### Cytotoxic activity

To investigate anticancer activity, MCF-7 cells were treated with compounds at concentrations ranging from 5 to 200  $\mu\text{g/ml}$  for 48 and 72 hr, and their viability was evaluated by MTT assay. CA and GA induced a time- and dose-dependent reduction in cell viability (Figure 5B). The  $\text{IC}_{50}$  values of compounds against MCF-7 cells were further determined (Table 3). To compare the cytotoxic effects of these compounds with an agent used against breast cancer, MCF-7 cells were also treated with a variety of tamoxifen citrate concentrations for the same periods. The

$\text{IC}_{50}$  values of tamoxifen citrate against MCF-7 cells were 19.4 and 16  $\mu\text{g/ml}$  following 48 and 72 hr of treatments, respectively (Figure 5B). Our results indicated that CA and GA inhibited MCF-7 breast cancer cell proliferation in a dose-dependent manner and affected apoptotic gene expression.

Table 3.  $\text{IC}_{50}$  values for CA, GA and tamoxifen citrate.

Compound	$\text{IC}_{50}$ (48 hr)	$\text{IC}_{50}$ (72 hr)
Caffeic acid	170 $\mu\text{g/ml}$	159 $\mu\text{g/ml}$
Gallic Acid	18.5 $\mu\text{g/ml}$	18 $\mu\text{g/ml}$
Tamoxifen citrate	19.4 $\mu\text{g/ml}$	16 $\mu\text{g/ml}$

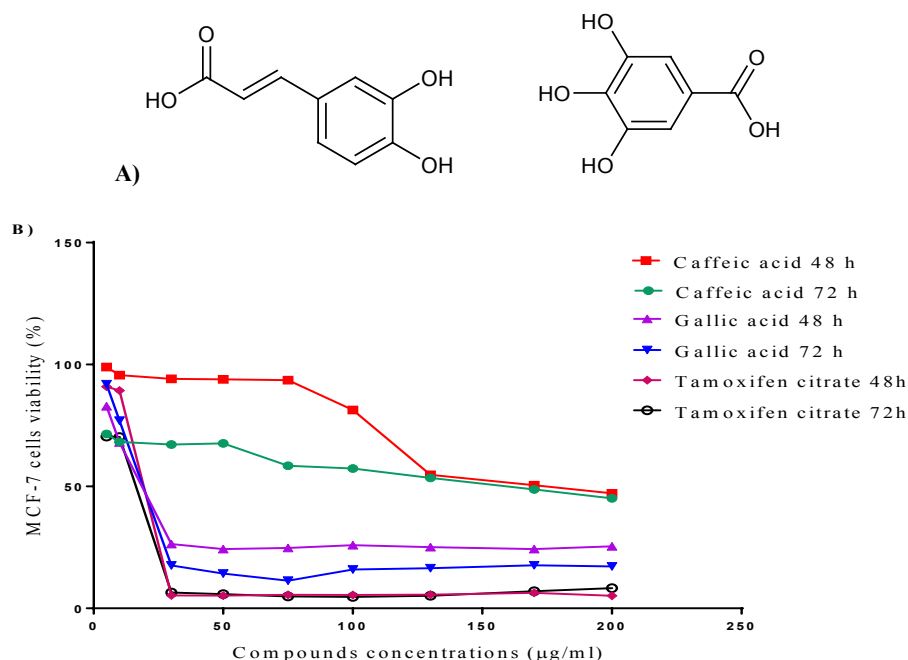


Figure 5. The chemical structures of CA and GA (left and right, respectively) (A); Time-based dose-response curves for MCF-7 during 48 and 72 hr treatments with CA and tamoxifen citrate (B).

### Morphological alterations

Morphological studies showed that the number of MCF-7 cells and eminent cytoplasmic granulations decreased following 48 hr treatment with CA and GA, in comparison with the untreated and control cultures. Notably, treatment with experimental compounds changed the morphology of MCF-7 cells similar to tamoxifen citrate (Figure 6).

### Gene expression

The possible roles of CA and GA in altering the expression of *P53*, *P21*, and

*Mcl-1* genes in MCF-7 cells were further investigated. Results showed that CA had significant effects on the desired genes expression in the MCF-7 cells (including *P53* down-regulation in 1, 2, 3 hr, *P21* down-regulation in 1, 2, 3 hr, and up-regulation in 48 hr, and *Mcl-1* up-regulation in 48 hr). Our data showed that GA also significantly impacted the expression of *P53*, *P21*, and *Mcl-1* in MCF-7 cells (including *P53* up-regulation in 3 and 48 hr, *P21* down-regulation in 1, 2, 3 hr and up-regulation in 48 hr, and *Mcl-1* up-regulation

in 48 hr). Figure 7 shows the changes in the expressions of *P53*, *P21* and *Mcl-1* genes.

**Interactions**

CA and GA targeted genes with a functional connection with intended genes involved in intrinsic apoptotic signaling pathway (*P53*, *Mcl-1*, and *P21*). The network also shows a correlation between intended compound-targeted genes and other genes effective in intrinsic apoptotic signaling pathway, such as *BCL2111*, *BAK1*, *TP73*, *BOK*, *BAX*, *TP63*, and *PMAIP1*. By this analysis, we showed probable interactions between certain CA and GA regulated genes.

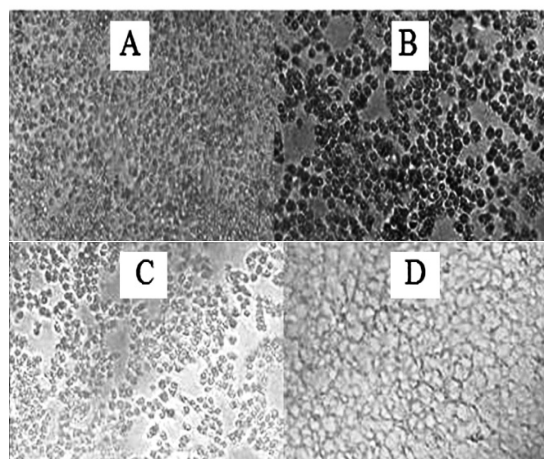


Figure 6. The morphological alterations of MCF-7 cells in non-treated cells (control) (A); after 48-hr treatment with 18 µg/ml of GA (B); 170 µg/ml of CA (C); and tamoxifen citrate.

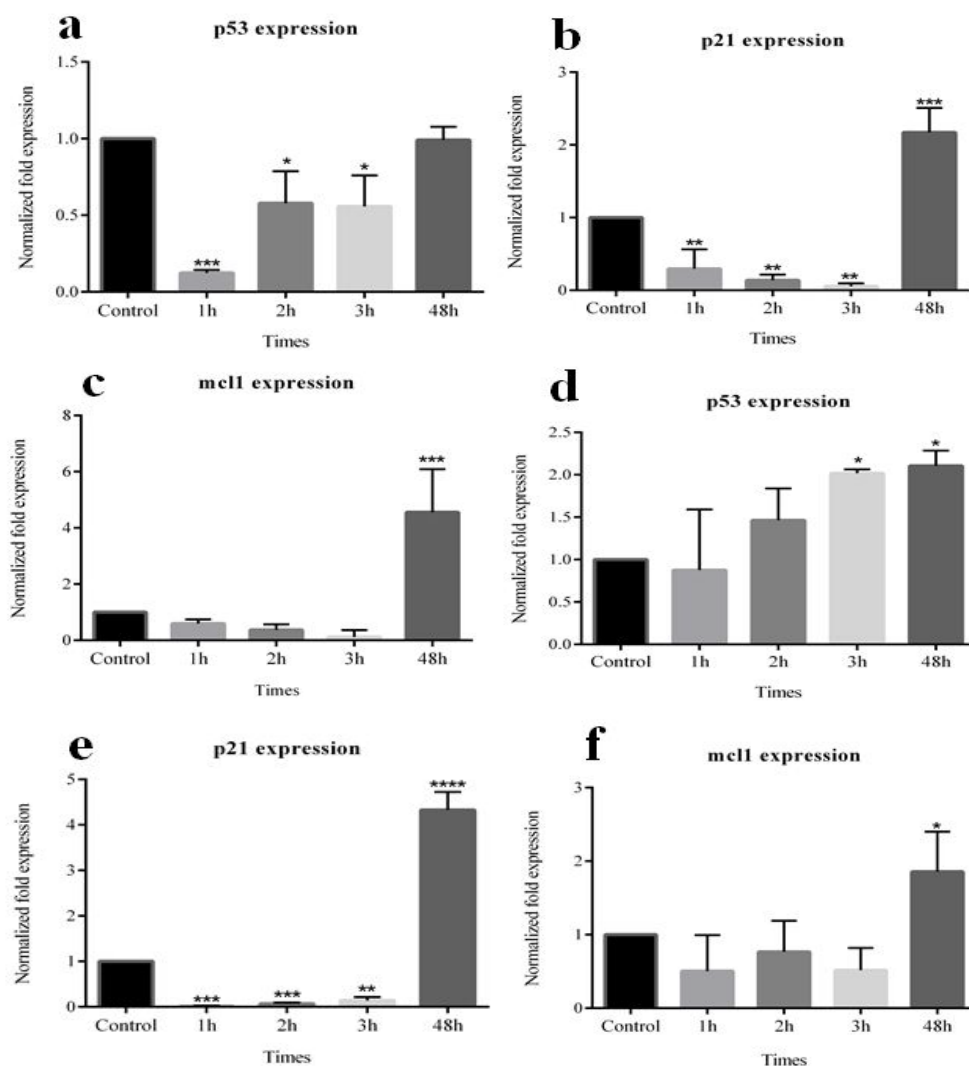


Figure 7. The effects of CA and GA on gene expression pattern as assessed by real-time RT-PCR. Upon CA treatment, *P53* (a), *P21* (b), and *Mcl-1* (c) and after GA treatment, *P53* (d), *P21* (e), *Mcl-1* (f) of MCF-7 cells were significantly affected. Asterisk indicates significant difference in mRNA expression in comparison with untreated cells used as the control group. \* $p < 0.05$ , \*\* $p < 0.01$ , \*\*\* $p < 0.001$ , \*\*\*\* $p < 0.0001$ .



## Discussion

Generally, the results of this study are in agreement with previously published researches, which also showed the anticancer effects of these compounds against different types of cancers including breast (Rosendahl et al., 2015), prostate (Sanderson et al., 2013), lung (Lin et al., 2012), colon (Chiang et al., 2014), and gastric cancer (Chang et al., 2002), as well as hepatocarcinoma (Guo et al., 2015) and fibrosarcoma (Prasad et al., 2011) for CA; other studies exhibited the anticancer effects of GA on colorectal cancer (Forester et al., 2014), hepatocellular carcinoma (Lima et al., 2016), and human oral cancer (Guimaraes et al., 2016).

To further clarify the possible mechanism of action of these compounds in the present research, we focused on the expression of a set of master genes associated with apoptosis in breast cancer. Network connectivity, for the first time, showed the functional interactions between investigated CA/GA-regulated genes and other genes associated with intrinsic apoptotic signaling pathway. It was also found that *P53*, *Mcl-1* and *P21* had a direct association concerning physical interactions, co-expression and signaling pathway; hence, we focused on the effect of CA and GA on the gene expression of *P53*, *P21* and *Mcl-1* in MCF-7 cell line. As specified in the results, after treatment with CA and GA, the expression of these genes was altered, reinforcing our hypothesis regarding the possible effects of these compounds on the intrinsic apoptotic signaling pathway.

*P53*, also known as *TP53*, codes a protein that functions as a tumor suppressor and partakes in the initiation of apoptosis process (Kerr et al., 1972; Huang and Strasser, 2000). In response to different forms of cellular stress, mitochondrial level of *P53* increases (Erster et al., 2004). Based on the data from this study, it seems that CA does not incremental affect on *P53* gene, yet GA increases its expression. This gene induces apoptosis by target gene activation

and transactivation-independent in mitochondria (Moll and Zaika, 2001). It has been recently found that GA induces apoptotic cell death, but not necrosis, in HepG2 cell line (Lima et al., 2016). Protein *P53* mediates the DNA damage-related checkpoint through the transactivation of several growth inhibitory or apoptotic genes. Among these genes, the small 165 amino acid protein *P21*, also known as *P21<sup>WAF1/Cip1</sup>*, mediates *P53*-dependent G1 growth arrest (Abbas and Dutta, 2009). How *P21* helps apoptosis is not clear, but might depend on both *P53*-independent and *p53*-dependent upregulation of pro-apoptotic protein *BAX*, activation of the members of the tumor necrosis factor family of death receptors, or via affecting DNA repair (Gartel, 2005). Results of *P21* gene expression following cell treatment with CA and GA, showed that the overexpression of this gene occurred at different times post treatment. Growth arrest by *P21* can promote cellular differentiation, thereby inhibiting cell proliferation. Several other studies have shown that GA improves the viability of HL-60 cell line via *P21* overexpression, and suppression of apoptosis induced by the overexpression of caspase-3, caspase-8 and caspase-9 (Yeh et al., 2011).

Furthermore, the overexpression of *P21*, by inhibiting several CDKs activity, such as *CDK2*, *CDK3*, and *CDK4*, ensues cell cycle arrest in G1 or G2 (Gartel and Tyner, 2002). *P21* can also bind proliferating cell nuclear antigen (PCNA), thereby directly preventing DNA synthesis (Chen et al., 1995). Also, the expression of this key protein could be controlled by *P53*-dependent and -independent mechanisms at transcriptional, post-transcriptional, or post-translational levels (Zhu et al., 2004). However, DNA damages can lead to the activation of *ATM/ATR-ERK* pathway, which ultimately results in the induction of *P21* expression in a *P53*-independent manner (Kim et al., 2002). Therefore, according to the data obtained from our study, it can be verified that in MCF7

treated with the desired compounds, P53 is unnecessary for P21 over-expression.

Moreover, Bcl-2 and its related proteins are among the most significant regulators of apoptosis (Williams and Cook, 2015). Various studies have established that *Mcl-1* mRNA is up-regulated as part of an early rapid cellular response to cytotoxic stimuli such as calcium ionophores, chemotherapeutic agents, pneumococcal infection and UV irradiation (Kafi et al., 2018). After studying the expression of this gene, we recognized that *Mcl-1*, unlike the two other genes, is slightly overexpressed following treatment with the two phenolic compounds; However, it is noted that MCL-1 is a major cause of resistance to chemo and radiotherapies, hence, inhibiting the expression of this gene is an important issue in cancer-related research. (Beekman and Howell, 2016) .

Furthermore, sub-apoptotic concentrations of cytotoxic compounds can induce growth arrest with senescence features, in which, *P53* and *P21<sup>WAF-1/CIP-1</sup>* are essential players; apoptosis plays an important role in myriad physiologic procedures in cell development; therefore, failure in apoptosis facilitates tumor formation and development (Jia et al., 2014; Seresht et al., 2019). Accordingly, it is possible to say that CA and GA are able to have different effects on the expression of such genes and the induction of apoptosis in treated cancer cells.

Findings of this study showed that MCF-7 cells treated with the intended compounds underwent several changes associated with cell death, such as morphological changes, and their numbers were reduced. Moreover, it was found that these compounds had significant effects on the expression of apoptosis genes such as *P53*, *P21* and *Mcl-1*. Accordingly, we suggest that these phenolic compounds are probable candidates for more research in animal models of breast cancer, as therapeutic agents, and adjuvants to standard chemotherapeutic drugs. By further cellular, molecular and *in vivo* studies on

the effects and probable side effects of CA and GA, maybe in the not too distant future, these materials can be applied for possible health benefits as food supplements and medication for patients with breast cancer.

### Acknowledgements

The researchers find it mandatory to express their honest gratitude to the Deputy Manager for Research in Sabzevar Medical University for the financial support.

### Conflict of interest

The authors report no conflicts of interest.

### References

- Abbas T, Dutta A. 2009. p21 in cancer: intricate networks and multiple activities. *Nat Rev Cancer*, 9:400-412.
- Beekman AM, Howell LA. 2016. Small-molecule and peptide inhibitors of the pro-survival protein Mcl-1. *Chem Med Chem*, 11:802–813.
- Beroukhim R, Mermel CH, Porter D, Wei G, Raychaudhuri S, Donovan J, Barretina J, Boehm JS, Dobson J, Urashima M, Mc Henry KT. 2010. The landscape of somatic copy-number alteration across human cancers. *Nature*, 463:899-905.
- Brewster AM, Chavez-MacGregor M, Brown P. 2014. Epidemiology, biology, and treatment of triple-negative breast cancer in women of African ancestry. *Lancet Oncol*, 15:e625–e634.
- Chang BD, Swift ME, Shen M, Fang J, Broude EV, Roninson IB. 2002. Molecular determinants of terminal growth arrest induced in tumor cells by a chemotherapeutic agent. *Proc Natl Acad Sci*, 99:389–394.
- Chen J, Jackson PK, Kirschner MW, Dutta A. 1995. Separate domains of p21 involved in the inhibition of Cdk kinase and PCNA. *Nature*, 374:386–388.
- Chiang EP, Tsai SY, Kuo YH, Pai MH, Chiu HL, Rodriguez RL, Tang FY. 2014. Caffeic acid derivatives inhibit the growth of colon cancer: involvement of the PI3-K/Akt and AMPK signaling pathways. *PLoS One*, 9:e99631.

## Cytotoxicity of caffeic acid and gallic acid in breast cancer cells

- Erster S, Mihara M, Kim RH, Petrenko O, Moll UM. 2004. In vivo mitochondrial p53 translocation triggers a rapid first wave of cell death in response to DNA damage that can precede p53 target gene activation. *Mol Cell Biol*, 24:6728–6741.
- Forester SC, Choy YY, Waterhouse AL, Oteiza PI. 2014. The anthocyanin metabolites gallic acid, 3-O-methylgallic acid, and 2, 4, 6-trihydroxybenzaldehyde decrease human colon cancer cell viability by regulating pro-oncogenic signals. *Mol Carcinog*, 53:432–439.
- Gartel AL. 2005. The conflicting roles of the cdk inhibitor p21 (CIP1/WAF1) in apoptosis. *Leuk Res*, 29:1237–1238.
- Gartel AL, Tyner AL. 2002. The role of the cyclin-dependent kinase inhibitor p21 in apoptosis I supported in part by NIH grant R01 DK56283 (to ALT) for the p21 research and Campus Research Board and Illinois Department of Public Health Penny Severns Breast and Cervical Cancer grant. *Mol Cancer Ther*, 1:639–649.
- Guimaraes TA, Farias LC, Fraga CA, Feltenberger JD, Melo GA, Coletta RD, Souza Santos SH, de Paula A, Guimaraes AL. 2016. Evaluation of the antineoplastic activity of gallic acid in oral squamous cell carcinoma under hypoxic conditions. *Anticancer Drugs*, 27:407–416.
- Guo D, Dou D, Ge L, Huang Z, Wang L, Gu N. 2015. A caffeic acid mediated facile synthesis of silver nanoparticles with powerful anti-cancer activity. *Colloids Surfaces B Biointerfaces*, 134:229–234.
- Halazonetis TD, Gorgoulis VG, Bartek J. 2008. An oncogene-induced DNA damage model for cancer development. *Science*, 319:1352–1355.
- Han Z, Wei W, Dunaway S, Darnowski JW, Calabresi P, Sedivy J, Hendrickson EA, Balan KV, Pantazis P, Wyche JH. 2002. Role of p21 in apoptosis and senescence of human colon cancer cells treated with camptothecin. *J Biol Chem*, 277:17154–17160.
- Hanahan D, Weinberg RA. 2000. The hallmarks of cancer. *Cell*, 100:57–70.
- Huang DCS, Strasser A. 2000. BH3-only proteins—essential initiators of apoptotic cell death. *Cell*, 103:839–842.
- Jia J, Yang M, Chen Y, Yuan H, Li J, Cui X, Liu Z. 2014. Inducing apoptosis effect of caffeic acid 3, 4-dihydroxy-phenethyl ester on the breast cancer cells. *Tumor Biol*, 35:11781–11789.
- Kafi Z, Cheshomi H, Gholami O. 2018. 7-Isopentenylcoumarin, arctigenin, and hesperidin modify myeloid cell leukemia type-1 (Mcl-1) gene expression by hormesis in K562 cell line. *Dose-Response*, 16:1-6.
- Kerr JFR, Wyllie AH, Currie AR. 1972. Apoptosis: a basic biological phenomenon with wideranging implications in tissue kinetics. *Br J Cancer*, 26:239-257.
- Kim GY, Mercer SE, Ewton DZ, Yan Z, Jin K, Friedman E. 2002. The stress-activated protein kinases p38 $\alpha$  and JNK1 stabilize p21Cip1 by phosphorylation. *J Biol Chem*, 277:29792–29802.
- Korach KS, Emmen JM, Walker VR, Hewitt SC, Yates M, Hall JM, Swope DL, Harrell JC, Couse JF. 2003. Update on animal models developed for analyses of estrogen receptor biological activity. *J Steroid Biochem Mol Biol*, 86:387–391.
- Kurokawa H, Arteaga CL. 2001. Inhibition of erbB receptor (HER) tyrosine kinases as a strategy to abrogate antiestrogen resistance in human breast cancer. *Clin Cancer Res*, 7:4436s-4442s.
- Lima KG, Krause GC, Schuster AD, Catarina AV, Basso BS, De Mesquita FC, Pedrazza L, Marczak ES, Martha BA, Nunes FB, Chiela EC. 2016. Gallic acid reduces cell growth by induction of apoptosis and reduction of IL-8 in HepG2 cells. *Biomed Pharmacother*, 84:1282–1290.
- Lin CL, Chen RF, Chen JY, Chu YC, Wang HM, Chou HL, Chang WC, Fong Y, Chang WT, Wu CY, Chiu CC. 2012. Protective effect of caffeic acid on paclitaxel induced anti-proliferation and apoptosis of lung cancer cells involves NF- $\kappa$ B pathway. *Int J Mol Sci*, 13:6236–6245.
- Lohr K, Moritz C, Contente A, Dobbstein M. 2003. p21/CDKN1A Mediates Negative Regulation of Transcription by p53. *J Biol Chem*, 278:32507–32516.
- Martin-Caballero J, Flores JM, García-Palencia P, Serrano M. 2001. Tumor susceptibility of p21Waf1/Cip1-deficient mice. *Cancer Res*, 61:6234–6238.
- Miller KD, Siegel RL, Lin CC, Mariotto AB, Kramer JL, Rowland JH, Stein KD, Alteri R, Jemal A. 2016. Cancer treatment and survivorship statistics, 2016. *CA Cancer J Clin*, 66:271–289.

- Moll UM, Zaika A. 2001. Nuclear and mitochondrial apoptotic pathways of p53. *FEBS Lett*, 493:65–69.
- Mosmann T. 1983. Rapid colorimetric assay for cellular growth and survival: application to proliferation and cytotoxicity assays. *J Immunol Methods*, 65:55–63.
- Nabavi SF, Nabavi SM, Habtemariam S, Moghaddam AH, Sureda A, Jafari M, Latifi AM. 2013. Hepatoprotective effect of gallic acid isolated from *Peltiphyllum peltatum* against sodium fluoride-induced oxidative stress. *Ind Crops Prod*, 44:50–55.
- Olsen H, Aaby K, Borge GIA. 2009. Characterization and quantification of flavonoids and hydroxycinnamic acids in curly kale (*Brassica oleracea* L. convar. *acephala* var. *sabellica*) by HPLC-DAD-ESI-MS. *J Agric Food Chem*, 57:2816–2825.
- Pietrzak M, Puzianowska-Kuznicka M. 2008. p53-dependent repression of the human MCL-1 gene encoding an anti-apoptotic member of the BCL-2 family: the role of Sp1 and of basic transcription factor binding sites in the MCL-1 promoter. *Biol Chem*, 389:383–393.
- Poole AJ, Heap D, Carroll RE, Tyner AL. 2004. Tumor suppressor functions for the Cdk inhibitor p21 in the mouse colon. *Oncogene*, 23:8128–8134.
- Prasad NR, Karthikeyan A, Karthikeyan S, Reddy BV. 2011. Inhibitory effect of caffeic acid on cancer cell proliferation by oxidative mechanism in human HT-1080 fibrosarcoma cell line. *Mol Cell Biochem*, 349:11–19.
- Rao K, Indap M, Radhika S, Motiwale L. 2006. Anticancer activity of phenolic antioxidants against breast cancer cells and a spontaneous mammary tumor. *Indian J Pharm Sci*, 68:470–476.
- Rosendahl AH, Perks CM, Zeng L, Markkula A, Simonsson M, Rose C, Ingvar C, Holly JM, Jernström H. 2015. Caffeine and caffeic acid inhibit growth and modify estrogen receptor (ER) and insulin-like growth factor I receptor (IGF-IR) levels in human breast cancer. *Clin Cancer Res Clin Oncol*, 21:1078–1083.
- Sanderson JT, Clabault H, Patton C, Lassalle-Claux G, Jean-François J, Paré AF, Hébert MJ, Surette ME, Touaibia M. 2013. Antiproliferative, antiandrogenic and cytotoxic effects of novel caffeic acid derivatives in LNCaP human androgen-dependent prostate cancer cells. *Bioorg Med Chem*, 21:7182–7193.
- Seresht HR, Albadry BJ, Al-mosawi AK, Gholami O, Cheshomi H. 2019. The cytotoxic effects of thymol as the major component of *Trachyspermum ammi* on breast cancer (MCF-7) cells. *Pharm Chem J*, 53:1–7.
- Singh SK, Clarke ID, Terasaki M, Bonn VE, Hawkins C, Squire J, Dirks PB. 2003. Identification of a cancer stem cell in human brain tumors. *Cancer Res*, 63:5821–5828.
- Skehan P, Storeng R, Scudiero D, Monks A, McMahon J, Vistica D, Warren JT, Bokesch H, Kenney S, Boyd MR. 1990. New colorimetric cytotoxicity assay for anticancer-drug screening. *JNCI J Natl Cancer Inst*, 82:1107–1112.
- Tabuchi Y, Matsuoka J, Gunduz M, Imada T, Ono R, Ito M, Motoki T, Yamatsuji T, Shirakawa Y, Takaoka M, Haisa M. 2009. Resistance to paclitaxel therapy is related with Bcl-2 expression through an estrogen receptor mediated pathway in breast cancer. *Int J Oncol*, 34:313–319.
- Thor AD, Liu S, Moore Li DH, Shi Q, Edgerton SM. 2000. p21 WAF1/CIP1 Expression in breast cancers: associations with p53 and outcome. *Breast Cancer Res Treat*, 61:33–43.
- Vousden KH. 2000. p53: death star. *Cell*, 103:691–694.
- Williams MM, Cook RS. 2015. Bcl-2 family proteins in breast development and cancer: could Mcl-1 targeting overcome therapeutic resistance? *Oncotarget*, 6:3519–3530.
- Yan J, Liu XL, Han LZ, Xiao G, Li NL, Deng YN, Yin LC, Ling LJ, Yu XY, Tan CL, Huang XP. 2015. Relation between Ki-67, ER, PR, Her2/neu, p21, EGFR, and TOP II- $\alpha$  expression in invasive ductal breast cancer patients and correlations with prognosis. *Asian Pac J Cancer Prev*, 16:823–829.
- Yang W, Velcich A, Lozonchi I, Liang J, Nicholas C, Zhuang M, Bancroft L, Augenlicht LH. 2005. Inactivation of p21WAF1/cip1 enhances intestinal tumor formation in *Muc2*<sup>-/-</sup> mice. *Am J Pathol*, 166:1239–1246.
- Ye JC, Hsiao MW, Hsieh CH, Wu WC, Hung YC, Chang WC. 2010. Analysis of caffeic

## Cytotoxicity of caffeic acid and gallic acid in breast cancer cells

- acid extraction from *Ocimum gratissimum* Linn. by high performance liquid chromatography and its effects on a cervical cancer cell line. *Taiwan J Obstet Gynecol*, 49:266–271.
- Yeh RD, Chen JC, Lai TY, Yang JS, Yu CS, Chiang JH, Lu CC, Yang ST, Yu CC, Chang SJ, Lin HY. 2011. Gallic acid induces G0/G1 phase arrest and apoptosis in human leukemia HL-60 cells through inhibiting cyclin D and E, and activating mitochondria-dependent pathway. *Anticancer Res*, 31:2821–2832.
- Zheng N, Zhang P, Huang H, Liu W, Hayashi T, Zang L, Zhang Y, Liu L, Xia M, Tashiro SI, Onodera S. 2015. ER $\alpha$  down-regulation plays a key role in silibinin-induced autophagy and apoptosis in human breast cancer MCF-7 cells. *J Pharmacol Sci*, 128:97–107.
- Zhu H, Zhang L, Wu S, Teraishi F, Davis JJ, Jacob D, Fang B. 2004. Induction of S-phase arrest and p21 overexpression by a small molecule 2 [3-(2, 3-dichlorophenoxy) propyl] amino] ethanol in correlation with activation of ERK. *Oncogene*, 23:4984-4992.