

The long non-coding RNA *GHSROS* facilitates breast cancer cell migration and orthotopic xenograft tumour growth

PATRICK B. THOMAS^{1,4}, INGE SEIM^{1,3,5}, PENNY L. JEFFERY^{1,3}, MANUEL D. GAHETE⁶⁻⁹,
MICHELLE MAUGHAM^{1,3}, GABRIELLE J. CRISP^{1,2}, ANDREW STACEY¹, ESHA T. SHAH^{1,3},
CARINA WALPOLE^{1,3}, ELIZA J. WHITESIDE¹⁰, COLLEEN C. NELSON³, ADRIAN C. HERINGTON^{1,3},
RAÚL M. LUQUE⁶⁻⁹, RAKESH N. VEEDU¹¹ and LISA K. CHOPIN^{1,3}

¹Ghrelin Research Group; ²Comparative and Endocrine Biology Laboratory, Translational Research Institute-Institute of Health and Biomedical Innovation, School of Biomedical Sciences, Queensland University of Technology;
³Australian Prostate Cancer Research Centre-Queensland; ⁴Queensland Bladder Cancer Initiative, Institute of Health and Biomedical Innovation, School of Biomedical Sciences, Queensland University of Technology, Princess Alexandra Hospital, Translational Research Institute, Brisbane, Queensland 4102, Australia; ⁵Integrative Biology Laboratory, College of Life Sciences, Nanjing Normal University, Nanjing, Jiangsu 210046, P.R. China;
⁶Maimonides Institute of Biomedical Research of Cordoba (IMIBIC); ⁷Department of Cell Biology, Physiology and Immunology, University of Córdoba; ⁸Hospital Universitario Reina Sofía (HURS);
⁹CIBER de la Fisiopatología de la Obesidad y Nutrición (CIBERObn), 14004 Córdoba, Spain;
¹⁰Moffitt Cancer Center and Research Institute, Tampa, FL, 33612, USA; ¹¹Centre for Comparative Genomics, Murdoch University & Perron Institute for Neurological and Translational Science, Perth, Western Australia 6150, Australia

Received June 11, 2018; Accepted April 2, 2019

DOI: 10.3892/ijo.2019.4891

Abstract. Recent evidence suggests that numerous long non-coding RNAs (lncRNAs) are dysregulated in cancer, and have critical roles in tumour development and progression. The present study investigated the ghrelin receptor antisense lncRNA growth hormone secretagogue receptor opposite strand (*GHSROS*) in breast cancer. Reverse transcription-quantitative polymerase chain reaction revealed that *GHSROS* expression was significantly upregulated in breast tumour tissues compared with normal breast tissue. Induced overexpression of *GHSROS* in the MDA-MB-231 breast cancer cell line significantly increased cell migration *in vitro*, without affecting cell proliferation, a finding similar to our previous study on lung cancer cell lines. Microarray analysis revealed a significant repression of a small cluster of major histocompatibility class II genes and enrichment of immune response pathways; this phenomenon may allow tumour cells to better evade the immune system. Ectopic overexpression of *GHSROS* in the

MDA-MB-231 cell line significantly increased orthotopic xenograft growth in mice, suggesting that *in vitro* culture does not fully capture the function of this lncRNA. This study demonstrated that *GHSROS* may serve a relevant role in breast cancer. Further studies are warranted to explore the function and therapeutic potential of this lncRNA in breast cancer progression.

Introduction

The human genome produces coding and non-coding RNA (ncRNA) transcripts; however, ncRNAs represent the predominant RNA species (1). Long ncRNAs (lncRNAs) are >200 nucleotides in length, have low protein-coding potential, and often exhibit spatial- and temporal-specific expression patterns (2). They are important regulators of gene expression, acting through a range of different mechanisms, in *cis* or *trans* (3,4). Given their broad role in a diverse range of biological processes, it is appreciated that they serve major roles in physiology and disease (5). Notably, a large number of lncRNAs have been reported to mediate cancer-associated processes (3). However, the role and expression patterns of the majority of lncRNAs in cancer remain largely unknown.

Breast cancer is the most commonly diagnosed cancer and a leading cause of cancer-associated mortality in women (6). Given the significant incidence of breast cancer in the population, there is a need to explore the therapeutic potential of novel molecular targets, particularly for triple-negative breast cancer, which is diagnosed in 15% of patients with breast cancer (7). Due to a lack of targeted therapies, these patients require more aggressive

Correspondence to: Professor Lisa K. Chopin, Ghrelin Research Group, Translational Research Institute-Institute of Health and Biomedical Innovation, School of Biomedical Sciences, Queensland University of Technology, 37 Kent Street, Woolloongabba, Brisbane, Queensland 4102, Australia
E-mail: l.chopin@qut.edu.au

Key words: long non-coding RNA, ghrelin receptor gene, antisense transcript, breast cancer, cell migration, tumour growth

treatment regimens (7). Historically, molecular classification and therapeutic targeting of breast cancer-associated genes has focused on protein-coding genes, which represent <1% of the genome (8). It is now appreciated that many lncRNAs are feasible biomarkers and targets for molecular therapies (9-12). A key example includes HOX transcript antisense intergenic RNA (*HOTAIR*), which is upregulated in primary and metastatic breast tumours (13-15). Overexpression of *HOTAIR* in breast cancer activates an oestrogen receptor (ER)-associated transcriptional program, to enhance cancer growth and tamoxifen resistance in breast cancer (16). Similarly, the highly conserved and abundant lncRNA metastasis-associated lung adenocarcinoma transcript 1 (*MALAT1*) is upregulated in a broad range of tumour types, including metastatic breast cancer, and stimulates cell proliferation and migration (17). Furthermore, targeting *MALAT1* in a mouse model of mammary carcinoma using modified antisense oligonucleotides (ASOs) significantly reduces breast cancer metastasis and slows primary tumour growth (18). Taken together, these studies highlight the value of studying the expression and function of lncRNAs in breast cancer.

The lncRNA growth hormone secretagogue receptor (*GHSR*) opposite strand (*GHSROS*) (19) is a single-exon gene antisense to the intronic region of *GHSR*; *GHSR* is also known as the ghrelin receptor gene (19). Our previous study demonstrated that *GHSROS* expression is elevated in non-small cell lung cancer and that its induced overexpression increases migration in lung adenocarcinoma cell lines (19). However, to the best of our knowledge, the expression pattern and functional role of *GHSROS* in breast cancer remains unknown. The present study analysed the expression of *GHSROS* in breast tissues and derived cell lines, and determined the effects of *GHSROS* overexpression *in vitro* (MDA-MB-231 and MCF10A cell lines) and *in vivo* (MDA-MB-231 tumour xenografts in mice).

Materials and methods

Cell culture. Cell lines were obtained from the American Type Culture Collection (ATCC). The MDA-MB-231 (HTB-26), MDA-MB-468 (HTB-132) and MDA-MB-453 (HTB-131) breast cancer cell lines were maintained in Dulbecco's modified Eagle's medium: Nutrient Mixture F-12 medium (DMEM/F12) supplemented with 10% foetal bovine serum (FBS), 100 U/ml penicillin G and 100 µg/ml streptomycin (all from Thermo Fisher Scientific, Inc., Waltham, MA, USA). The MCF10A breast-derived non-tumourigenic cell line (CRL-10317) was maintained in DMEM/F12 supplemented with 5% heat-inactivated horse serum, 50 U/ml penicillin G, 100 µg/ml streptomycin, 10 µg/ml bovine insulin (all from Thermo Fisher Scientific, Inc.), 0.5 µg/ml hydrocortisone, 200 µg/ml cholera toxin (both from Sigma Aldrich; Merck KGaA) and 20 ng/ml epidermal growth factor (Thermo Fisher Scientific, Inc.). The T-47D (HTB-133) and MCF-7 (HTB-22) cell lines were maintained in RPMI-1640 medium supplemented with 10% FBS, 100 U/ml penicillin G, 100 µg/ml streptomycin and 10 µg/ml bovine insulin (Thermo Fisher Scientific, Inc.). The HMEC human mammary epithelial cell-derived, non-malignant cell line (PCS-600-010) was grown in HuMEC Ready Medium and Supplement kit (Thermo Fisher Scientific, Inc.). All cell lines were maintained at 37°C in a humidified

incubator (Panasonic) containing 5% CO₂; cells were grown in tissue culture flasks (Corning, Inc.), and passaged at 2- to 3-day intervals upon reaching 70% confluence using TrypLE Select (Thermo Fisher Scientific, Inc.). Cell morphology and viability were monitored by microscopic observation and regular *Mycoplasma* testing was performed (Universal Mycoplasma Detection kit; ATCC). Approval for cell line use was granted by the Queensland University of Technology (QUT) Human Research Ethics Committee (Brisbane, Australia).

Production of *GHSROS*-overexpressing cell lines. For gain-of-function studies, full-length *GHSROS* was generated as previously described (19). The full-length *GHSROS* transcript, amplified from the A549 (CCL-185; ATCC) lung adenocarcinoma cell line, was cloned into the *pTarget* mammalian expression vector (Promega Corporation). MDA-MB-231 and MCF10A cell lines were transfected with 1 µg *GHSROS-pTarget* plasmid DNA or vector alone (empty vector) using Lipofectamine LTX (Invitrogen; Thermo Fisher Scientific, Inc.) as per the manufacturer's instructions. Cells (2x10⁵/well) were seeded in a 6-well plate 24 h prior to transfection. Following incubation at room temperature for 5 min, cells were transfected for 24 h at 37°C in Lipofectamine LTX and further selected with geneticin (G418; Invitrogen; Thermo Fisher Scientific, Inc.) at concentrations of 500 µg/ml for MCF10A and 600 µg/ml for MDA-MB-231 cells. Transfected cells were grown in the presence of G418 for ≥2 weeks prior to the performance of functional analyses. For *in vivo* xenograft experiments, MDA-MB-231 cells stably overexpressing luciferase pGL4.51[*luc2*/CMV/Neo] (MDA-MB-231luc) were obtained (provided by Dr Eloïse Dray, QUT). *pReceiver-Lv105* lentiviral vectors (containing full-length *GHSROS* or no insert) pre-packaged in lentiviral particles were purchased from GeneCopoeia, Inc. Briefly, to optimise transduction, a titration of 0.1-10 µl viral particles was performed in the PC3 prostate cancer cell line (CRL-1435; ATCC) and the lowest, most viable dose was used. MDA-MB-231 cells were seeded at 50-60% confluence and were transduced with *GHSROS* or empty vector control lentiviral constructs at a multiplicity of infection of 1 in the presence of 8 µg/ml polybrene (Sigma-Aldrich; Merck KGaA) according to the manufacturer's protocol. After 48 h at 37°C, transduced cells were selected with 1 µg/ml puromycin (Invitrogen; Thermo Fisher Scientific, Inc.) and expanded. *GHSROS* expression was confirmed ~3 weeks after selection by reverse transcription-quantitative polymerase chain reaction (RT-qPCR), then every 2-3 weeks and prior to every functional experiment.

RNA extraction and RT-qPCR. Cell lines were centrifuged at 133 x g for 5 min and total RNA was extracted from cell pellets using an RNeasy Plus Mini kit and a genomic DNA (gDNA) eliminator spin column (Qiagen GmbH). Total RNA was quantified using a NanoDrop ND-1000 spectrophotometer (NanoDrop Technologies; Thermo Fisher Scientific, Inc., Wilmington, DE, USA), diluted 1:5 in RNase-free water, and frozen at -80°C until further use. To remove contaminating gDNA, 1 µg RNA was treated with DNase prior to cDNA synthesis with Superscript III (Invitrogen; Thermo Fisher Scientific, Inc.); RT was performed according to the manufacturer's protocol. RT-qPCR was performed with SYBR-Green PCR Master Mix (Qiagen GmbH) using primers

Table I. Primer sequences used in the present study.

Primer	Gene name	Primer sequence (5'-3')
<i>GHSROS</i>	Growth hormone secretagogue receptor opposite strand	F: ACATTCAGCAAATCCAGTTAATGACA R: CGACTGGAGCACGAGGACACTTGA
<i>GHSROS</i> -RT linker	Growth hormone secretagogue receptor opposite strand	CGACTGGAGCACGAGGACACTGACAACAG AATCACTACTTCCCCAAA
<i>ACTB</i>	β -actin (housekeeping gene)	F: ACTCTTCCAGCCTTCCTTCTCT R: CAGTGATCTCCTTCTGCATCCT
<i>HLA-DRB3</i>	MHC class II, DR β 3	QIAGEN QuantiTect Primer Assay
<i>HLA-DRA</i>	MHC class II, DR α	QIAGEN QuantiTect Primer Assay
<i>HLA-DPB1</i>	MHC, class II, DP β 1	QIAGEN QuantiTect Primer Assay
<i>HLA-DPA1</i>	MHC class II, DP α 1	QIAGEN QuantiTect Primer Assay
<i>TBX3</i>	T-box 3	QIAGEN QuantiTect Primer Assay
<i>HTR1F</i>	5-hydroxytryptamine receptor 1F	QIAGEN QuantiTect Primer Assay
<i>TENM1</i>	Teneurin transmembrane protein 1	QIAGEN QuantiTect Primer Assay

F, forward primer; R, reverse primer; RT, reverse transcription; MHC, major histocompatibility complex.

listed in Table I on an AB7500 FAST sequence detection thermal cycler (Applied Biosystems; Thermo Fisher Scientific, Inc., Waltham, MA, USA) or a ViiA Real-Time PCR system (Applied Biosystems; Thermo Fisher Scientific, Inc.). PCR cycles were performed under the following conditions: 10 min at 95°C; 40 cycles of 15 sec at 95°C and 1 min at 60°C, followed by melting curve analysis. All experiments were performed in triplicate. A negative control (water instead of template) was used for each primer set. Baseline and quantification cycle (Cq) values were obtained using ABI 7500 Prism and the relative expression levels of mRNA were calculated using the comparative $2^{-\Delta\Delta Cq}$ method (20). Expression was normalised to the housekeeping gene β -actin (*ACTB*). Statistical analyses were performed using GraphPad Prism v.6.01 software (GraphPad Software, Inc.).

GHSROS expression in human tissue specimens. The expression of *GHSROS* in human breast tissue was quantified by RT-qPCR (as aforementioned) using cDNA panels of breast tumour and normal breast tissue samples. Briefly, TissueScan Cancer Survey Tissue qPCR panels BCRT101, BCRT102, BCRT103 and BCRT104 were arrayed onto a single 384-well reaction plate by OriGene Technologies, Inc. Data are expressed as mean fold-change using the comparative $2^{-\Delta\Delta Cq}$ method (compared to non-malignant control tissue on the same plate and normalised to *ACTB*).

Cell proliferation assays. Proliferation assays were performed using an xCELLigence real-time cell analysis (RTCA) DP instrument (ACEA Biosciences, Inc.). This system employs sensor impedance technology to quantify the status of the cell using a unit-less parameter termed the cell index (CI) (21). The CI represents the status of the cell based on the measured relative alterations in electrical impedance that occur in the presence and absence of cells in the wells [generated by the software, according to the formula $CI = (Z_t - Z_0)/15 \Omega$, where Z_t is the impedance at an individual point of time during the experiment and Z_0 is the impedance at the start of the

experiment] (21,22). Impedance is measured at three different frequencies (10, 25 and 50 kHz). Briefly, 5×10^3 cells were trypsinised, seeded into a 96-well plate (E-plate) and grown for 48 h at 37°C in 150 μ l growth media. The CI was measured every 15 min and all experiments were performed in triplicate, with at least three independent repeats.

Cell migration assays. Migration assays were performed using an xCELLigence RTCA DP instrument (ACEA Biosciences, Inc.), and cell invasion and migration plates (CIM-Plate[®]; ACEA Biosciences, Inc.). Briefly, 5×10^4 cells/well in 150 μ l serum-free media were seeded on the upper electronically integrated Boyden chamber above a membrane with a pore size of 8- μ m. The lower chamber contained 160 μ l media supplemented with 10% FBS as a chemoattractant. The CI was measured every 15 min for 18 h (as an indication of the rate of cell migration onto the underside of the top chamber). All experiments were performed in triplicate, with at least three independent repeats.

Oligonucleotide microarray analysis. Oligonucleotide microarray analysis was performed using RNA extracted from MDA-MB-231 cell lines overexpressing *GHSROS* or vector controls. The MDA-MB-231 breast cancer cell line (three biological replicates) was transfected independently three times with *GHSROS-pTarget* or empty *pTarget* vector as aforementioned, and RNA was extracted and its purity analysed using an Agilent 2100 Bioanalyzer (Agilent Technologies, Inc.). Total RNA (500 ng) was processed and hybridised to Affymetrix Human Gene Arrays 1.0 by the Ramaciotti Centre for Gene Function Analysis (Sydney, Australia). The array (n=3, *GHSROS-pTarget* and empty control) was quantile normalised and log₂-transformed using the R statistical programming language v3.12 (www.r-project.org). Gene annotations were obtained from the National Center for Biotechnology Information (Platform GPL6244; downloaded September 2017; www.ncbi.nlm.nih.gov/geo/query/acc.cgi?acc=GPL6244). Differential expression was determined

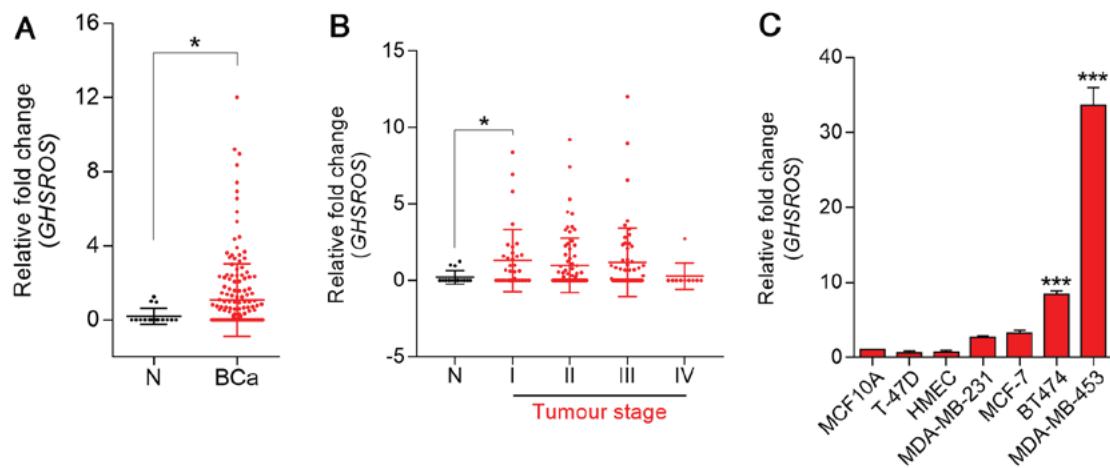


Figure 1. *GHSROS* is expressed at low levels in normal breast tissue and at higher levels in breast cancer (BCa). (A) *GHSROS* expression in clinical BCa (n=176) and N breast samples (n=16), as determined by RT-qPCR. * $P \leq 0.05$, Mann-Whitney-Wilcoxon test. (B) *GHSROS* expression stratified by clinical stage of BCa, as determined by RT-qPCR. N (n=16), stage I (n=35), stage II (n=74), stage III (n=57) and stage IV (n=10). * $P \leq 0.05$, Kruskal-Wallis with Dunn's post hoc test. (C) *GHSROS* expression in the MCF10A and HMLE normal-breast derived cell lines, and the MDA-MB-231, MCF-7, T-47D, BT474 and MDA-MB-453 BCa cell lines compared to the MCF-10A cell line, as determined by RT-qPCR. *** $P \leq 0.001$ vs. MCF-10A, one-way ANOVA with Dunnett's post hoc test. All experiments were performed independently three times (n=3) with three replicates per experiment (n=3). Data are presented as the mean \pm standard error of the mean, and relative expression levels were determined using the comparative $2^{-\Delta\Delta Cq}$ method. Samples were normalised using β -actin. BCa, breast cancer; *GHSROS*, growth hormone secretagogue receptor opposite strand; N, normal; RT-qPCR, reverse transcription-quantitative polymerase chain reaction.

using R package 'limma' v3.33.12 (23). Differentially expressed genes were defined as an absolute fold-change ≥ 1.5 and $P \leq 0.05$.

To identify associations between differentially expressed genes, STRING (v10.5) functional analysis (24) was implemented. STRING integrates predicted and experimentally confirmed relationships between proteins that are likely to contribute to a common biological purpose. Using default parameters, differentially expressed genes were mapped into the STRING user interface and interactions were partitioned into distinct clusters using k-means analysis (25). Interaction networks were exported into Inkscape (v0.91; inkscape.org). To test for gene enrichment, differentially expressed genes were analysed using the Kyoto Encyclopedia of Genes and Genomes (KEGG) (26) pathway database within the STRING functional analysis tool. STRING categorises KEGG pathway terms and calculates an 'enrichment score' or EASE score (a modified Fisher's exact test-derived P-value).

Orthotopic mammary fat pad in vivo xenografts in mice.

Experiments were approved by the University of Queensland (Brisbane, Australia) and QUT animal ethics committees (TRI/QUT/328/16). Mice were housed under specific pathogen-free conditions in individually ventilated cages (Tecniplast S.p.A.) at room temperature (20–23°C), 40–60% relative humidity and under a 12-h light/dark cycle. Food and water were provided *ad libitum*. MDA-MB-231-*GHSROS* or MDA-MB-231-Vector cell lines were injected at a 1:1 ratio with growth factor-reduced Matrigel (Corning, Inc.) (n=8–10/cell line) directly into the right inguinal mammary fat pad of 3-week old female NOD.Cg-Prkdc SCID IL-2rgtm1WjL/SzJ (NSG) mice (weight, 20–25 g; generated by the Jackson Laboratory; provided by Animal Resource Centre). Tumour growth was measured twice weekly with digital calipers (ProSciTech Pty Ltd.) and tumour volume was calculated using a formula for the volume of an ellipse: $V = \pi/6(d1 \times d2)^{3/2}$, where d1 and d2 represent perpendicular tumour measurements (27). In addition, tumour

size and growth were monitored weekly by bioluminescent imaging (28). Briefly, mice were injected intraperitoneally with 150 mg/kg firefly luciferase substrate D-Luciferin (PerkinElmer, Inc.) diluted in PBS (Thermo Fisher Scientific, Inc.) 10 min prior to imaging. Following anaesthesia with isoflurane, bioluminescent imaging was performed using an IVIS Spectrum *in vivo* imaging system (PerkinElmer, Inc.) (28). Images were analysed using the associated Living Image Software (PerkinElmer, Inc.; version 4.7.1). Briefly, total flux in photons/sec (p/s) was used as a surrogate for primary tumour size and determined within a defined region of interest, individually, for each mouse (28). Animals were sacrificed once tumour volume reached 1,000 mm³, or earlier according to other ethical endpoints.

Statistical analyses. Data are presented as the mean \pm standard error of the mean of at least two independent experiments, and were evaluated by Student's t-test, one-way or two-way ANOVA with Dunnett's or Bonferroni's post hoc test, Mann-Whitney-Wilcoxon test or Kruskal-Wallis test with Dunn's post hoc test for multiple groups. $P \leq 0.05$ was considered to indicate a statistically significant difference. Statistical analyses were performed using GraphPad Prism v.6.01 (GraphPad Software, Inc.).

Results

GHSROS expression is elevated in breast cancer tissue and breast cancer-derived cell lines. To investigate the role of *GHSROS* in breast cancer, RT-qPCR was performed on cDNA array panels of normal breast and breast cancer tissues. *GHSROS* expression could be detected in three out of 16 normal breast tissue samples (Fig. 1A). In contrast, 47% (83/176) of tumours expressed *GHSROS* at significantly higher levels than the normal breast tissues examined ($P=0.030$). In addition, *GHSROS* was significantly elevated in stage I ($P=0.0077$) breast cancer samples (Fig. 1B; Table II). *GHSROS* expression

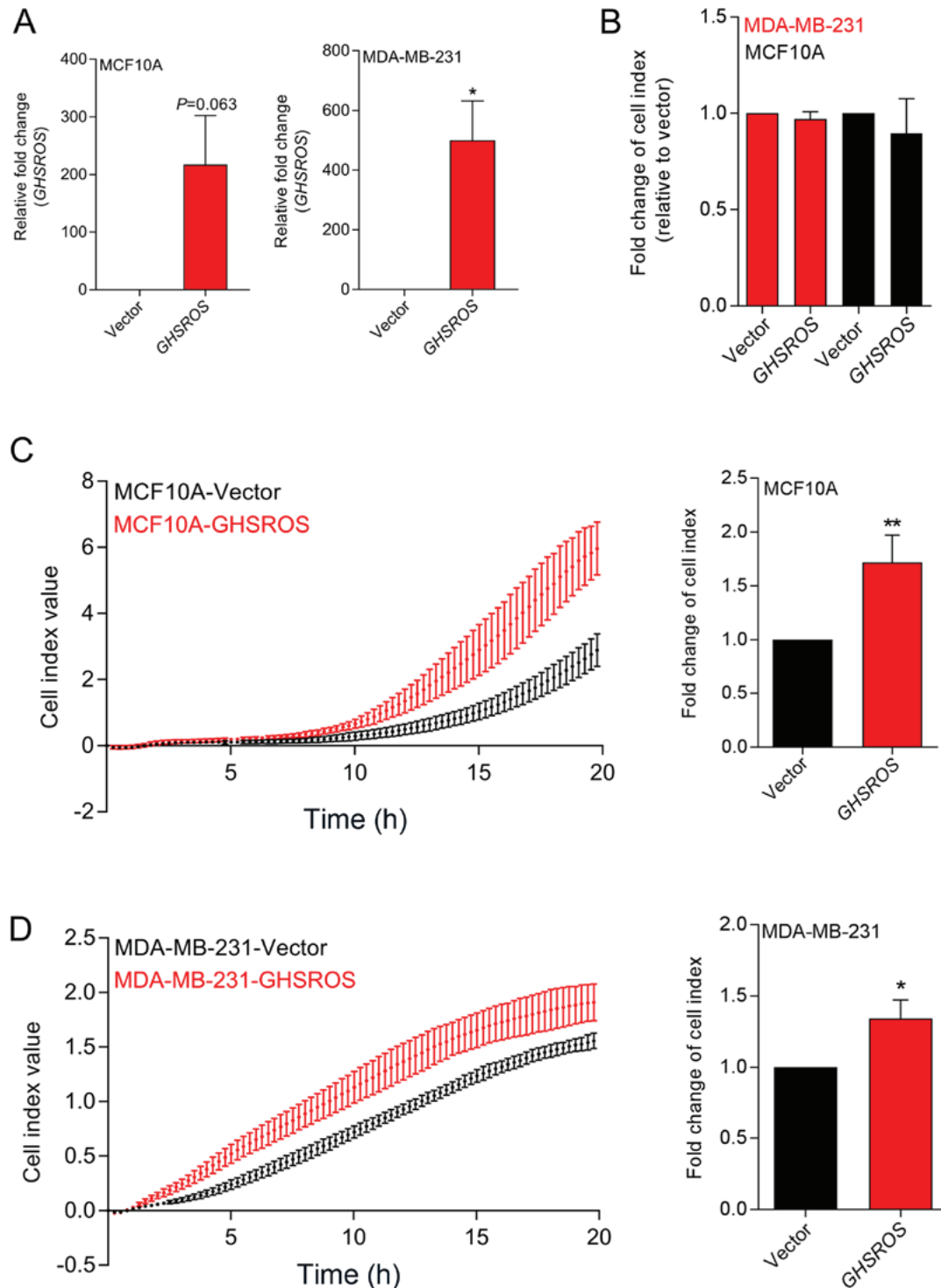


Figure 2. *GHSROS* promotes cell migration, but not cell proliferation, in MCF10A and MDA-MB-231 breast cancer cell lines *in vitro*. (A) Relative expression of *GHSROS* in MDA-MB-231-GHSROS, MDA-MB-231-Vector, MCF10A-GHSROS and MCF10A-Vector cell lines. Expression was normalised to the housekeeping gene β -actin using the comparative $2^{-\Delta\Delta C_t}$ method of quantification. Results are relative to each vector control. (B) Proliferation was not significantly increased in the MCF10A or MDA-MB-231 cell lines overexpressing *GHSROS* compared to cells expressing vector alone when assessed using an xCELLigence real-time cell analyser for 72 h. (C) *GHSROS* overexpression increased MCF10A migration across a porous membrane (pore size, 8 μ M). Left panel, representative plot of raw cell index impedance measurements from 0 to 20 h after cell seeding. Right panel, *GHSROS* overexpression increased cell migration at 18 h. (D) *GHSROS* overexpression increased MDA-MB-231 migration across a porous membrane. Left panel, representative plot of raw cell index impedance measurements from 0 to 20 h after overexpression of *GHSROS*. Right panel, *GHSROS* overexpression increased cell migration 18 h after passaging. Data are presented as the mean \pm standard error of the mean (n=3). * $P \leq 0.05$, ** $P \leq 0.01$ vs. vector control; Student's t-test. *GHSROS*, growth hormone secretagogue receptor opposite strand.

was not associated with a range of other clinical parameters and features, including age, hormone receptor status [ER, progesterone receptor (PR) and human epidermal growth factor

receptor 2 (HER2)] and metastasis (Table II). Similar to the normal tissue specimens, very low levels of *GHSROS* expression were observed in the MCF10A and HMEC non-malignant cell

Table II. *GHSROS* expression, as determined by reverse transcription-quantitative polymerase chain reaction, and clinicopathological parameters in breast cancer and normal breast clinical specimens.

Clinicopathological parameters	Total number (n)	Sample n demonstrating expression	Sample % demonstrating expression	P-value
N/T	16/176	3/83	12.5/47.2	0.0300 ^a
Clinical stage				
N	16	2	12.5	NA
I	35	20	57.1	0.0406 ^a
II	74	33	44.6	0.2364
III	57	27	47.4	0.1359
IV	10	1	10	>0.9999
Clinical features				
ER ⁺ /ER ⁻	74/59	32/33	43.2/55.9	0.3829
PR ⁺ /PR ⁻	67/57	27/29	40.3/50.9	0.3402
HER2 ⁺ /HER2 ⁻	42/93	18/44	42.9/47.3	0.6185
ER ⁻ , PR ⁻ , HER2 ⁻ /Other	33/152	17/66	51.5/43.4	0.7110
M/Non-M	17/159	5/76	29.4/47.8	0.4236

GHSROS expression in tumour tissues stratified by clinical stage and clinical features was compared to normal breast tissues. All tumour tissue was compared against normal breast tissue. Clinical features were assessed within tumour tissues. P-values were calculated using the Kruskal-Wallis with Dunn's post hoc test for multiple comparisons. ER, oestrogen receptor; HER2, human epidermal growth factor receptor 2; M, metastatic tumour; non-M, non-metastasised tumour (primary breast tumour confined to site); N, normal breast tissue; NA, non-applicable; PR, progesterone receptor; T, tumour tissue. ^aP≤0.05 compared with N. For some samples, clinical information was missing; therefore, these samples were excluded from that analysis. The mean age at diagnosis was 55.8 years.

lines compared with most breast cancer cell lines (Fig. 1C). *GHSROS* was expressed at higher levels in triple-negative (ER⁻, PR⁻ and HER2⁻) MDA-MB-231 (2.71±0.27 fold-change, P=0.3601) and MDA-MB-453 (33.60±3.33 fold-change, P=0.0001) cell lines, and in the ER⁻/PR⁺/HER2⁺ BT474 (8.36±0.94 fold-change, P=0.0001) and ER⁺/PR⁺/HER2⁺ MCF7 (3.28±0.65 fold-change, P=0.0652) cell lines compared with the MCF10A cell line (Fig. 1C).

Ectopic overexpression of GHSROS in breast-derived cell lines promotes in vitro migration, but not in vitro proliferation. In order to investigate *GHSROS* function, MCF10A normal breast-derived cells and MDA-MB-231 breast cancer cells stably overexpressing full-length *GHSROS* (MCF10A-*GHSROS* and MDA-MB-231-*GHSROS*), and corresponding vector control cell lines (MCF10A-Vector and MDA-MB-231-Vector), were generated (Fig. 2A). The MDA-MB-231 cell line was chosen for overexpression studies as it has relatively low endogenous levels of *GHSROS*. Using real-time cell analysis (xCELLigence system), it was observed that *GHSROS* overexpression did not significantly increase the *in vitro* proliferation rate of cultured MCF10A (0.96±0.04 fold-change, P=0.18) and MDA-MB-231 cell lines (0.89±0.81 fold-change, P=0.29) over 72 h (Fig. 2B). Conversely, overexpression of *GHSROS* significantly increased the rate of migration of MCF10A (1.71±0.43 fold-change, P=0.040; Fig. 2C) and MDA-MB-231 (1.34±0.26 fold-change, P=0.045; Fig. 2D) cell lines over an 18-h period.

GHSROS regulates genes associated with cancer and the immune response. To gain further insight into the function of

GHSROS in breast cancer, gene expression microarrays were performed on RNA isolated from *GHSROS*-overexpressing MDA-MB-231 cells and vector control cells. A total of 76 genes were differentially regulated by >1.5-fold in MDA-MB-231 cells overexpressing *GHSROS* (36 upregulated and 40 downregulated) (Fig. 3A and Table III).

The most upregulated genes in the microarray were 5-hydroxytryptamine (5-HT) receptor 1F (*HTR1F*, 3.1 fold-change, P=0.0040) and EPH receptor A3 (*EPHA3*, 2.3 fold-change, P=0.0190) (Table III). Significant upregulation of *HTR1F* was verified by RT-qPCR in the MDA-MB-231-*GHSROS* cell line (19.2±1.173 fold-change, P=0.0002; Fig. 3B). Conversely, *HTR1F* expression was reduced in MCF10A-*GHSROS* cells (-2.68±0.002 fold-change, P>0.999; Fig. 3B), although this finding was not statistically significant. Notably, a number of established oncogenes were differentially expressed in the MDA-MB-231-*GHSROS* microarray data. These included teneurin transmembrane protein 1 (*TENM1*), which was downregulated in MDA-MB-231-*GHSROS* cells (-2.00 fold-change, P=0.0238). These data were validated by RT-qPCR in MDA-MB-231-*GHSROS* cells (-2.65±0.286 fold-change, P=0.0048), and *TENM1* was similarly downregulated in MCF10A-*GHSROS* cells (-2.31±0.262 fold-change, P=0.020; Fig. 3B). The T-box transcription factor gene T-box 3 (*TBX3*) is associated with breast cancer cell migration and growth (29) and was upregulated (1.5 fold-change, P=0.0041; Table III) in the MDA-MB-231-*GHSROS* microarray. Upregulation of *TBX3* was confirmed by RT-qPCR in MDA-MB-231-*GHSROS* cells (5.60±0.82 fold-change, P=0.025; Fig. 3B); however, *TBX3* expression was not altered in MCF10A-*GHSROS* cells (Fig. 3B).

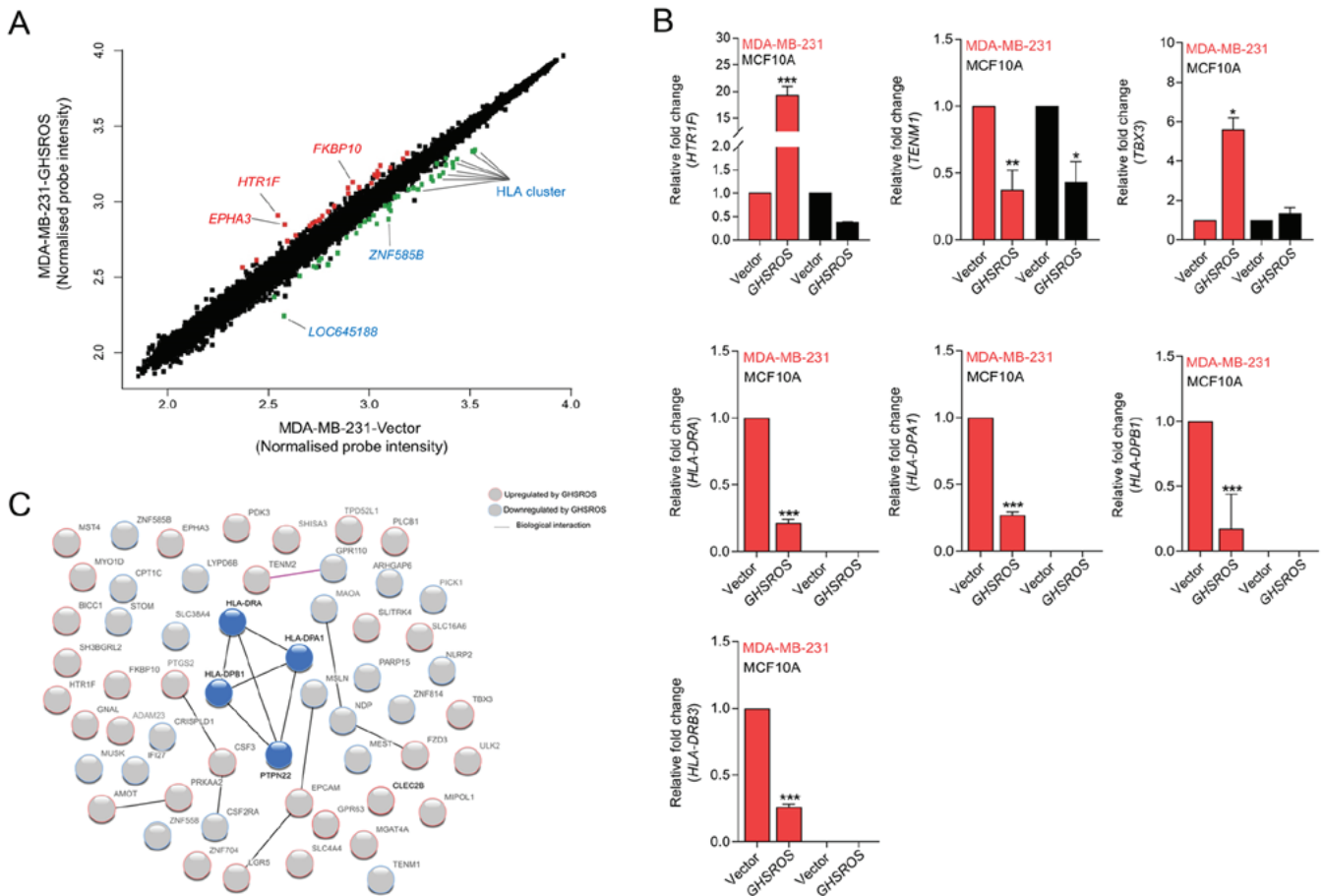


Figure 3. *GHSROS* significantly differentially regulates 76 genes in the MDA-MB-231 breast cancer cell line. (A) Scatter plot visualization of induced (red) or repressed (green) genes identified by microarray. The threshold was set as \log_2 1.5 fold-change and $Q \leq 0.05$ (Benjamini Hochberg-adjusted P-value). *EPHA3*, *HTR1F*, *FKBP10*, *LOC645188*, *ZNF585B* and HLA genes were affected by *GHSROS*. (B) Expression levels of *TBX3*, *HTR1F*, *TENM1*, *HLA-DRA*, *HLA-DRB3*, *HLA-DPA1* and *HLA-DPB1* were measured in cultured MDA-MB-231-*GHSROS*, MDA-MB-231-Vector, MCF10A-Vector and MCF10A-*GHSROS* cells by reverse transcription-quantitative polymerase chain reaction. Expression was normalised to the housekeeping gene β -actin. Results are relative to the respective vector control. Data are presented as the mean \pm standard error of the mean ($n=2$); *** $P \leq 0.001$ vs. vector control, two-way ANOVA with Bonferroni's post hoc analysis. (C) STRING network consisting of 56 proteins encoded by genes differentially expressed in MDA-MB-231-*GHSROS* cells. Nodes represent differentially expressed genes. Genes induced (red border) or repressed (blue border) by *GHSROS* are indicated. Lines between protein nodes indicate biological associations inferred or experimentally demonstrated. Differentially expressed HLA genes are represented by blue nodes in the centre of the cluster. *EPHA3*, EPH receptor A3; *FKBP10*, FK506 binding protein 10; *GHSROS*, growth hormone secretagogue receptor opposite strand; *HLA-DRA*, MHC, class II, DR α ; *HLA-DRB3*, MHC, class II, DR β ; *HLA-DPA1*, MHC, class II, DP α 1; *HLA-DPB1*, MHC, class II, DP β 1; *HTR1F*, 5-hydroxytryptamine receptor 1F; MHC, major histocompatibility complex; *TBX3*, T-box 3; *TENM1*, teneurin transmembrane protein 1; *ZNF585B*, zinc finger protein 585B.

In the present dataset, it was observed that a single probe matched to several class II major histocompatibility complex (MHC) genes. A number of MHC class II genes were significantly repressed by *GHSROS* [including MHC, class II, DR β 3 (*HLA-DRB3*), -2.7 fold-change, $P=0.0068$; MHC, class II, DR β 1, -2.7 fold-change, $P=0.0063$; MHC, class II, DR α (*HLA-DRA*), -2.4 fold-change, $P=0.0058$; MHC, class II, DP β 1 (*HLA-DPB1*), -2.3 fold-change, $P=0.039$; Table III]. MHC gene loci are complex; their exons are highly similar and person-to-person variation in exon sequences can confound microarray probe hybridisation (30,31). To firmly establish which MHC-II genes were differentially expressed upon forced *GHSROS* overexpression, selected genes were validated by RT-qPCR. Using RT-qPCR, it was confirmed that *GHSROS* overexpression in MDA-MB-231 cells induced downregulation of the MHC-II genes *HLA-DRA* (-4.62 \pm 0.024 fold-change, $P<0.0001$), *HLA-DPB1* (-4.53 \pm 0.30 fold-change, $P<0.0001$), MHC, class II, DP α 1 *HLA-DPA1* (-3.69 \pm 0.02 fold-change, $P<0.0001$) and *HLA-DRB3* (-3.84 \pm 0.02

fold-change, $P<0.0001$) (Fig. 3B). These transcripts were not detected in the MCF10A-*GHSROS* or MCF10A-Vector cell lines, which is consistent with the fact that normal breast epithelial tissue is typically MHC-II negative (32).

Differentially expressed genes identified by microarray analysis were interrogated for biological interactions using the STRING tool (24). Within the functional protein-protein interaction (PPI) network a small, distinct interaction was detected between the MHC-II gene set (*HLA-DRA*, *HLA-DPA1* and *HLA-DPB1*) and protein tyrosine phosphatase, non-receptor type 22 (lymphoid) (Fig. 3C; expected interactions, 7; observed interactions, 15; PPI enrichment $P=0.0099$, hypergeometric test). KEGG pathway analysis of 56 genes analysed in STRING demonstrated that the 40 genes downregulated in MDA-MB-231-*GHSROS* cells were enriched for pathways typically associated with the expression of MHC-II genes (Fig. 3C; Table IV), including 'antigen processing and presentation' [Benjamini-Hochberg corrected P-value, Benjamini-Hochberg false discovery rate (BH-FDR)=0.0020],

Table III. Differentially expressed genes in MDA-MB-231-GHSROS cells compared with in empty vector control cells.

Gene symbol	Gene name	Fold-change	P-value	Affymetrix probe
<i>HTR1F</i>	5-Hydroxytryptamine receptor 1F	3.12	0.0040	8081067
<i>EPHA3</i>	EPH receptor A3	2.27	0.0190	8081081
<i>FKBP10</i>	FK506 binding protein 10	2.23	0.0032	8007154
<i>SHISA3</i>	Shisa family member 3	2.13	0.0046	8094870
<i>MYO1D</i>	Myosin ID	2.07	0.0111	8014115
<i>STK26</i>	Serine/threonine protein kinase 26	1.91	0.0008	8169949
<i>BICC1</i>	BicC family RNA binding protein 1	1.81	0.0021	7927681
<i>PTGS2</i>	Prostaglandin-endoperoxide synthase 2	1.79	0.0106	7922976
<i>EPCAM</i>	Epithelial cell adhesion molecule	1.77	0.0089	8098439
<i>SH3BGL2</i>	SH3 domain binding glutamate rich protein like 2	1.70	0.0008	8120833
<i>FZD3</i>	Frizzled class receptor 3	1.68	0.0021	8145611
<i>PRKAA2</i>	Protein kinase AMP-activated catalytic subunit α 2	1.63	0.0118	7901720
<i>SLC16A6</i>	Solute carrier family 16 member 6	1.63	0.0045	8017843
<i>SLC4A4</i>	Solute carrier family 4 member 4	1.63	0.0056	8095585
<i>GPR63</i>	G protein-coupled receptor 63	1.62	0.0092	8128316
<i>MIPOL1</i>	Mirror-image polydactyly 1	1.62	0.0013	7973985
<i>LGR5</i>	Leucine rich repeat containing G protein-coupled receptor 5	1.58	0.0184	7957140
<i>PLCB1</i>	Phospholipase C β 1	1.58	0.0222	8060854
<i>ADAM23</i>	ADAM metalloproteinase domain 23	1.56	0.0083	8047788
<i>SLITRK4</i>	SLIT and NTRK like family member 4	1.52	0.0070	8175574
<i>GNAL</i>	G protein subunit α L	1.52	0.0006	8020164
<i>AMOT</i>	Angiomotin	1.52	0.0128	8174576
<i>MGAT4A</i>	mannosyl (α -1,3-)-glycoprotein β -1,4-N-acetylglucosaminyltransferase, isozyme A	1.52	0.0418	8054135
<i>ULK2</i>	Unc-51 like autophagy activating kinase 2	1.50	0.0008	8013399
<i>OR2A9P//</i>	Olfactory receptor family 2 subfamily A member 9 pseudogene//	1.50	0.0373	8136983
<i>OR2A20P</i>	olfactory receptor family 2 subfamily A member 20 pseudogene			
<i>ZNF704</i>	Zinc finger protein 704	1.50	0.0032	8151496
<i>TBX3</i>	T-box 3	1.49	0.0041	7966690
<i>SUPT20HL1///</i>	SPT20 homolog, SAGA complex component-like 1///SPT20	1.48	0.0245	8166509
<i>SUPT20HL2</i>	homolog, SAGA complex component-like 2			
<i>SUPT20HL1///</i>	SPT20 homolog, SAGA complex component-like 1///SPT20	1.48	0.0245	8171844
<i>SUPT20HL2</i>	homolog, SAGA complex component-like 2			
<i>TENM2</i>	Teneurin transmembrane protein 2	1.47	0.0391	8109752
<i>PDK3</i>	Pyruvate dehydrogenase kinase 3	1.47	0.0220	8166511
<i>OR2A9P///OR2A20P</i>	Olfactory receptor family 2 subfamily A member 9 pseudogene// olfactory receptor family 2 subfamily A member 20 pseudogene	1.47	0.0334	8143629
<i>TPD52L1</i>	Tumour protein D52-like 1	1.46	0.0024	8121838
<i>TMEM56-RWDD3///</i>	TMEM56-RWDD3 readthrough///transmembrane	1.46	0.0363	7903162
<i>TMEM56</i>	protein 56			
<i>CLEC2B</i>	C-type lectin domain family 2 member B	1.45	0.0498	7961083
<i>CSF3</i>	Colony stimulating factor 3	1.45	0.0052	8006999
<i>PICK1</i>	Protein interacting with PRKCA 1	-1.47	0.0386	8072989
<i>MAOA</i>	Monoamine oxidase A	-1.48	0.0217	8166925
<i>CRISPLD1</i>	Cysteine rich secretory protein LCCL domain containing 1	-1.49	0.0009	8146967
<i>MSLN</i>	Mesothelin	-1.50	0.0059	7992071
<i>ZNF558</i>	Zinc finger protein 558	-1.53	0.0070	8033667
<i>PTPN22</i>	Protein tyrosine phosphatase, non-receptor type 22	-1.54	0.0004	7918657
<i>NDP</i>	NDP, norrin cystine knot growth factor	-1.54	0.0004	8172220
<i>IFI27</i>	Interferon α inducible protein 27	-1.56	0.0225	7976443
<i>ZNF814</i>	Zinc finger protein 814	-1.56	0.0033	8039692

Table III. Continued.

Gene symbol	Gene name	Fold-change	P-value	Affymetrix probe
<i>PARP15</i>	poly(ADP-ribose) polymerase family member 15	-1.56	0.0147	8082086
<i>CPT1C</i>	Carnitine palmitoyltransferase 1C	-1.56	0.0267	8030448
<i>RNU5D-1</i>	RNA, U5D small nuclear 1	-1.57	0.0412	7915592
<i>ARHGAP6</i>	Rho GTPase activating protein 6	-1.58	0.0042	8171313
<i>MEST</i>	Mesoderm specific transcript	-1.63	0.0026	8136248
<i>STOM</i>	stomatin	-1.67	0.0110	8163896
<i>NLRP2</i>	NLR family pyrin domain containing 2	-1.72	0.0001	8031398
<i>MUSK</i>	Muscle associated receptor tyrosine kinase	-1.79	0.0389	8157173
<i>CSF2RA</i>	Colony stimulating factor 2 receptor α subunit	-1.80	0.0030	8165735
<i>CSF2RA</i>	Colony stimulating factor 2 receptor α subunit	-1.80	0.0030	8176306
<i>LYPD6B</i>	LY6/PLAUR domain containing 6B	-1.97	0.0188	8045664
<i>TENM1</i>	Teneurin transmembrane protein 1	-1.97	0.0238	8174937
<i>TGIF2LY///</i>	TGFB induced factor homeobox 2 like, Y-linked///TGFB	-1.97	0.0002	8176397
<i>TGIF2LX</i>	induced factor homeobox 2 like, X-linked			
<i>HLA-DPB1</i>	Major histocompatibility complex, class II, DP β 1	-1.99	0.0485	8118594
<i>TGIF2LY///</i>	TGFB induced factor homeobox 2 like, Y-linked///TGFB	-1.99	0.0002	8168646
<i>TGIF2LX</i>	induced factor homeobox 2 like, X-linked			
<i>ADGRF1</i>	Adhesion G protein-coupled receptor F1	-2.00	0.0038	8126820
<i>SLC38A4</i>	Solute carrier family 38 member 4	-2.04	0.0081	7962559
<i>HLA-DPB1</i>	Major histocompatibility complex, class II, DP β 1	-2.07	0.0403	8178220
<i>SPANXC///SPANXD</i>	SPANX family member C///SPANX family member D	-2.10	0.0027	8175558
<i>HLA-DPA1</i>	Major histocompatibility complex, class II, DP α 1	-2.22	0.0466	8125556
<i>HLA-DPA1</i>	Major histocompatibility complex, class II, DP α 1	-2.22	0.0466	8178891
<i>HLA-DPA1</i>	Major histocompatibility complex, class II, DP α 1	-2.22	0.0470	8180100
<i>HLA-DPB1</i>	Major histocompatibility complex, class II, DP β 1	-2.31	0.0391	8179519
<i>ZNF585B</i>	zinc finger protein 585B	-2.31	0.0001	8036389
<i>HLA-DRA///</i>	Major histocompatibility complex, class II, DR α ///major	-2.35	0.0065	8118548
<i>HLA-DQA1</i>	histocompatibility complex, class II, DQ α 1			
<i>HLA-DRA///</i>	Major histocompatibility complex, class II, DR α ///major	-2.36	0.0058	8179481
<i>HLA-DQA1</i>	histocompatibility complex, class II, DQ α 1			
<i>LOC645188</i>	Uncharacterised LOC645188	-2.39	0.0003	8170257
<i>HLA-DRA///</i>	Major histocompatibility complex, class II, DR α ///major	-2.55	0.0072	8178193
<i>HLA-DQA1</i>	histocompatibility complex, class II, DQ α 1			
<i>LOC105369230///</i>	HLA class II histocompatibility antigen, DRB1-7 β chain///major	-2.62	0.0054	8180003
<i>HLA-DRB6///</i>	histocompatibility complex, class II, DR β 6 (pseudogene)///major			
<i>HLA-DRB5///</i>	histocompatibility complex, class II, DR β 5///major			
<i>HLA-DRB4///</i>	histocompatibility complex, class II, DR β 4///major			
<i>HLA-DRB3///</i>	histocompatibility complex, class II, DR β 4///major			
<i>HLA-DRB1///</i>	histocompatibility complex, class II, DR β 3///major			
<i>LOC105369230///</i>	histocompatibility complex, class II, DR β 1///HLA class II			
<i>HLA-DRB5///</i>	histocompatibility antigen, DRB1-7 β chain///major			
<i>HLA-DRB4///</i>	histocompatibility complex, class II, DR β 5///major			
<i>HLA-DRB3///</i>	histocompatibility complex, class II, DR β 4///major			
<i>HLA-DRB1///</i>	histocompatibility complex, class II, DR β 3///major			
<i>HLA-DQB1</i>	histocompatibility complex, class II, DR β 1///major			
<i>LOC105369230///</i>	histocompatibility complex, class II, DQ β 1			
<i>LOC105369230///</i>	HLA class II histocompatibility antigen, DRB1-7 β chain///major	-2.66	0.0063	8178811
<i>HLA-DRB6///</i>	histocompatibility complex, class II, DR β 6 (pseudogene)///major			
<i>HLA-DRB5///</i>	histocompatibility complex, class II, DR β 5///major			
<i>HLA-DRB4///</i>	histocompatibility complex, class II, DR β 4///major			
<i>HLA-DRB3///</i>	histocompatibility complex, class II, DR β 3///major			

Table III. Continued.

Gene symbol	Gene name	Fold-change	P-value	Affymetrix probe
<i>HLA-DRB1</i> ///	histocompatibility complex, class II, DR β 1///HLA class II			
<i>LOC105369230</i> ///	histocompatibility antigen, DRB1-7 β chain///major			
<i>HLA-DRB5</i> ///	histocompatibility complex, class II, DR β 5///major			
<i>HLA-DRB4</i> ///	histocompatibility complex, class II, DR β 4///major			
<i>HLA-DRB3</i> ///	histocompatibility complex, class II, DR β 3///major			
<i>HLA-DRB1</i> ///	histocompatibility complex, class II, DR β 1///major			
<i>HLA-DQB1</i>	histocompatibility complex, class II, DQ β 1			
<i>LOC105369230</i> ///	HLA class II histocompatibility antigen, DRB1-7 β chain///major	-2.71	0.0068	8178802
<i>HLA-DRB6</i> ///	histocompatibility complex, class II, DR β 6 (pseudogene)///major			
<i>HLA-DRB5</i> ///	histocompatibility complex, class II, DR β 5///major			
<i>HLA-DRB4</i> ///	histocompatibility complex, class II, DR β 4///major			
<i>HLA-DRB3</i> ///	histocompatibility complex, class II, DR β 3///major			
<i>HLA-DRB1</i> ///	histocompatibility complex, class II, DR β 1///HLA class II			
<i>LOC105369230</i> ///	histocompatibility antigen, DRB1-7 β chain///major histocompatibility			
<i>HLA-DRB5</i> ///	complex, class II, DR β 5///major histocompatibility complex,			
<i>HLA-DRB4</i> ///	class II, DR β 4///major histocompatibility complex, class II,			
<i>HLA-DRB3</i> ///	DR β 3///major histocompatibility complex, class II, DR β 1///major			
<i>HLA-DRB1</i> ///	histocompatibility complex, class II, DQ β 1			
<i>HLA-DQB1</i>				

Bold text represents higher expression in MDA-MB-231-GHSROS cells; unbold text represents lower expression in MDA-MB-231-GHSROS cells. P-values were obtained using the R package 'limma' (moderated t-test).

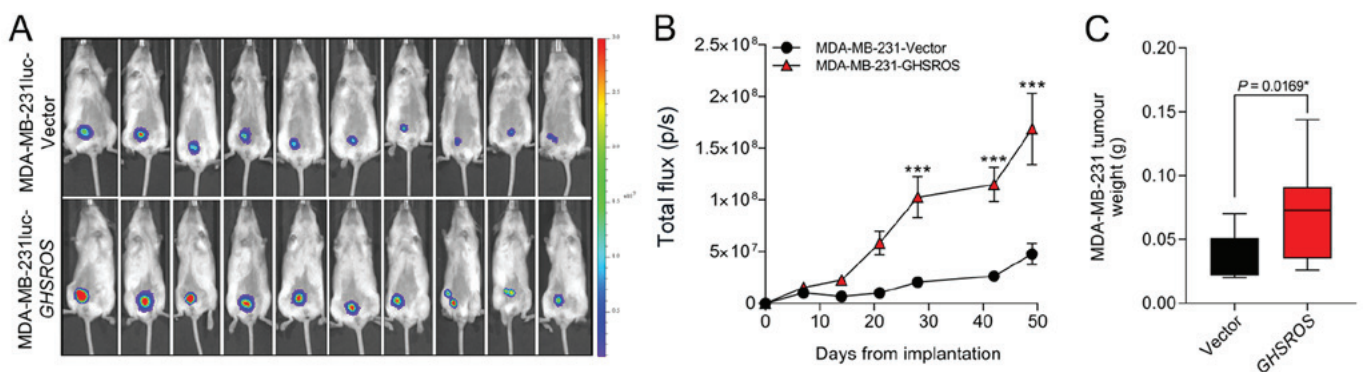


Figure 4. *GHSROS* promotes orthotopic MDA-MB-231 xenograft tumour growth *in vivo*. (A) NOD.Cg-Prkdc SCID IL-2rgtm1WjL/SzJ mice were injected in the mammary fat pad with MDA-MB-231luc cell lines stably overexpressing *GHSROS* (n=10) or empty vector (n=10). Representative IVIS images showing total flux (bioluminescence) at day 49 (endpoint) demonstrating that tumours were larger in mice with *GHSROS*-overexpressing tumours. (B) Time course for MDA-MB-231luc-*GHSROS* (n=10) and luc-Vector control (n=10) mammary fat pad xenograft tumour bioluminescence. Tumour bioluminescent imaging [total flux (p/s)] was measured using the IVIS Spectrum *in vivo* imaging system. *** $P \leq 0.001$ vs. vector control, two-way ANOVA with Bonferroni's post hoc analysis. (C) Tumour weights of MDA-MB-231 xenografts (*GHSROS* overexpressing, n=10; vector, n=10) at the endpoint. * $P < 0.05$ vs. vector control, Mann-Whitney-Wilcoxon test. Data are presented as the mean \pm standard error of the mean. *GHSROS*, growth hormone secretagogue receptor opposite strand; p/s, photons/sec.

'asthma' (BH-FDR=0.0011) and 'graft-versus-host disease' (BH-FDR=0.0011) pathways (Table IV).

GHSROS increases orthotopic breast xenograft growth. In order to investigate the effect of *GHSROS* on tumour growth *in vivo* an orthotopic xenograft model was used (33). MDA-MB-231luc-*GHSROS* and MDA-MB-231luc-Vector cells were injected into the mammary fat pad of NSG mice (Fig. 4A). Compared to vector controls, mammary fat

pad xenograft tumour volumes [measured by total flux (p/s)] were significantly increased in MDA-MB-231luc-*GHSROS* mice at day 28 post-implantation (Mann-Whitney, $P=0.0002$), day 42 post-implantation ($P \leq 0.0001$) and at the experimental (ethical) endpoint (day 49, $P \leq 0.0001$) (Fig. 4B). No gross metastases were observed in either experimental group. Upon excision, the MDA-MB-231luc-*GHSROS* tumours weighed significantly more post mortem (Mann-Whitney-Wilcoxon test, $P=0.017$; Fig. 4C).

Discussion

Our previous study demonstrated that *GHSROS*, a lncRNA derived from a gene antisense to the ghrelin receptor gene, is expressed by non-small cell lung tumours and increases lung cancer cell migration *in vitro* (19). Similarly, in this study it was demonstrated that *GHSROS* was expressed in breast cancer and promoted *in vitro* cell line migration. *GHSROS* also promoted MDA-MB-231 breast cancer cell xenograft tumour growth and altered the expression of cancer-associated and immune genes. While lncRNAs are rarely highly conserved, nor abundantly expressed, they can serve integral regulatory roles in a large array of cellular processes, including pathological conditions such as tumourigenesis (34,35). In a previous study, genome-wide RNA-seq profiling of 22 paired tumour and non-malignant tissues from ER⁺ breast cancer samples demonstrated that the expression of natural antisense transcript lncRNAs are increased in tumour samples (36), suggesting that they may have important regulatory roles.

A number of lncRNAs differentially expressed in breast cancer function as critical mediators of breast cancer tumourigenesis (35,37,38). For example, the lncRNAs *H19* (39), *MALAT1* (40), *HOTAIR* (41) and taurine upregulated 1 (42) have a higher gene expression in breast cancer tissues and derived cell lines (41,43). lncRNAs have also been proposed as potential breast cancer biomarkers. *MALAT1* is an abundant and highly conserved lncRNA that can be detected in the serum of patients with breast cancer and at much higher levels than in patients with benign breast disease (40). Although the present study did not detect a direct relationship between *GHSROS* expression and clinical parameters (including ER, PR and HER2 status), further studies interrogating a larger patient cohort are warranted.

GHSROS increased *in vitro* cell migration, but not proliferation, of the MDA-MB-231 breast cancer cell line and the non-tumourigenic, normal-breast derived MCF10A cell line. Our previous study observed similar effects in non-small-cell lung carcinoma cell lines overexpressing *GHSROS* (19). MDA-MB-231 breast cancer cells metastasise from the mammary fat pads of NSG mice, with gross tumours observed in multiple tissues, including the lungs, lymph nodes and liver, 53 days after implantation (44). This model is, therefore, useful for investigating the effect of gene expression on metastasis. In the current study, mice bearing *GHSROS*-overexpressing xenografts were euthanised 49 days after injection as they had reached the ethical endpoint. However, gross metastases were not observed and therefore, it was not possible to determine if *GHSROS* affected metastasis in these animals.

Although no changes in proliferation were observed in the present two-dimensional cell models, tumour size was significantly greater in orthotopic MDA-MB-231-*GHSROS* xenograft tumours. *In vitro* models of cell proliferation do not replicate numerous aspects of cancer progression (33), including the tumour microenvironment and growth factors, which are not present in an *in vitro* system (45).

Microarray analysis of MDA-MB-231-*GHSROS* cells cultured *in vitro* was conducted to reveal potential *GHSROS*-regulated genes. The most highly upregulated gene, *HTRIF*, belongs to a subgroup of 5-HT/serotonin receptors and is significantly associated with breast cancer recurrence (46).

This gene was downregulated in *GHSROS*-overexpressing MCF10A cells, which also exhibited increased *in vitro* migration, suggesting that *HTRIF* is unlikely to play a major role in *GHSROS*-mediated cell migration. Upregulation of the 5-HT signalling pathways in metastatic breast cancer is pro-oncogenic, stimulating pro-proliferative, invasive and anti-apoptotic pathways (46). Conversely, normal physiological levels of the ligand, 5-HT, induce growth inhibition and apoptosis in breast cancer cell lines, presumably by increased expression of its receptors (47). *TBX3* is a transcription factor that is considered a key driver of breast cancer progression, which was elevated in *GHSROS*-overexpressing breast cancer cells. *TBX3* is elevated in metastatic breast cancer, is correlated with reduced metastasis-free survival, and potently promotes cell survival and tumour growth in early-stage breast cancer cell models (29,48,49). Additionally, *TBX3* overexpression stimulates cell migration in normal breast and breast cancer cells (49). Therefore, it was hypothesised that *TBX3* may represent a key mediator of the effects of *GHSROS* in breast cancer.

Transcripts encoding a number of subunits of MHC-II were repressed in MDA-MB-231 cells overexpressing *GHSROS*. MHC-II genes encode cell surface proteins primarily involved in antigen presentation and adaptive immunity (30,50,51). Reduced tumour expression of the MHC-II complex increases breast tumour aggressiveness and results in poor overall survival (50,52). Conversely, increased MHC-II expression is associated with a positive prognosis in triple-negative breast cancer (50). Given that *in vivo* xenograft models using human cell lines require immunocompromised or syngeneic mice, the role of *GHSROS* in antitumour immunity is currently challenging to investigate and could not be assessed in the present xenograft model. Humanised mice that support human cell lines and patient-derived xenografts (53,54) will be critical in assessing if *GHSROS* overexpression indeed facilitates immune system evasion. The present study hypothesised that *GHSROS*, by downregulating critical components of the acquired immune system, may promote breast tumour cell survival.

There are several limitations to the present study. Firstly, gene expression was not examined between tumours and corresponding adjacent, normal tissue. Future studies will aim to detect the expression of *GHSROS* in larger, well-characterised clinical cohorts. Secondly, overexpression of *GHSROS* should be complemented by knockdown experiments, using, for example, short hairpin RNA or modified ASOs. We recently generated ASOs targeting *GHSROS*, revealing that these compounds reciprocally regulate *GHSROS*-mediated expression and function of prostate cancer cell lines (Thomas *et al*, unpublished data). We aim to assess these ASOs in a future breast cancer study. Finally, 3D invasion assays, complementing the 2D *in vitro* assays employed in this study, may provide critical further insights into the function of *GHSROS*. 2D assays, particularly invasion assays (22), are not fully representative of gene function and may lead to discordant results, as observed when comparing 2D *in vitro* proliferation assay data and *in vivo* xenograft tumour growth in this study. 3D invasion assays will be employed in a future study to further determine the function of *GHSROS*.

In conclusion, the present study examined the expression and function of the lncRNA *GHSROS* in breast cancer,

Table IV. Enriched KEGG pathway terms for 40 genes downregulated in MDA-MB-231-GHSROS cells.

KEGG ID	Pathway description	Gene count	BH-FDR	Genes
5310	Asthma	3	0.00107 ^a	<i>HLA-DPA1</i> , <i>HLA-DPB1</i> , <i>HLA-DRA</i>
5330	Allograft rejection	3	0.00107 ^a	<i>HLA-DPA1</i> , <i>HLA-DPB1</i> , <i>HLA-DRA</i>
5332	Graft-versus-host disease	3	0.00107 ^a	<i>HLA-DPA1</i> , <i>HLA-DPB1</i> , <i>HLA-DRA</i>
4940	Type I diabetes mellitus	3	0.00111 ^a	<i>HLA-DPA1</i> , <i>HLA-DPB1</i> , <i>HLA-DRA</i>
4672	Intestinal immune network for IgA production	3	0.00119 ^a	<i>HLA-DPA1</i> , <i>HLA-DPB1</i> , <i>HLA-DRA</i>
5150	<i>Staphylococcus aureus</i> infection	3	0.00132 ^a	<i>HLA-DPA1</i> , <i>HLA-DPB1</i> , <i>HLA-DRA</i>
5320	Autoimmune thyroid disease	3	0.00132 ^a	<i>HLA-DPA1</i> , <i>HLA-DPB1</i> , <i>HLA-DRA</i>
5416	Viral myocarditis	3	0.00146 ^a	<i>HLA-DPA1</i> , <i>HLA-DPB1</i> , <i>HLA-DRA</i>
5321	Inflammatory bowel disease (IBD)	3	0.00185 ^a	<i>HLA-DPA1</i> , <i>HLA-DPB1</i> , <i>HLA-DRA</i>
4612	Antigen processing and presentation	3	0.00201 ^a	<i>HLA-DPA1</i> , <i>HLA-DPB1</i> , <i>HLA-DRA</i>
5140	Leishmaniasis	3	0.00209 ^a	<i>HLA-DPA1</i> , <i>HLA-DPB1</i> , <i>HLA-DRA</i>
5323	Rheumatoid arthritis	3	0.00356 ^a	<i>HLA-DPA1</i> , <i>HLA-DPB1</i> , <i>HLA-DRA</i>
5322	Systemic lupus erythematosus	3	0.00443 ^a	<i>HLA-DPA1</i> , <i>HLA-DPB1</i> , <i>HLA-DRA</i>
5145	Toxoplasmosis	3	0.0069 ^a	<i>HLA-DPA1</i> , <i>HLA-DPB1</i> , <i>HLA-DRA</i>
4514	Cell adhesion molecules	3	0.0114 ^a	<i>HLA-DPA1</i> , <i>HLA-DPB1</i> , <i>HLA-DRA</i>
4145	Phagosome	3	0.0121 ^a	<i>HLA-DPA1</i> , <i>HLA-DPB1</i> , <i>HLA-DRA</i>
5164	Influenza A	3	0.0179 ^a	<i>HLA-DPA1</i> , <i>HLA-DPB1</i> , <i>HLA-DRA</i>
5152	Tuberculosis	3	0.0181 ^a	<i>HLA-DPA1</i> , <i>HLA-DPB1</i> , <i>HLA-DRA</i>
5168	Herpes simplex infection	3	0.0183 ^a	<i>HLA-DPA1</i> , <i>HLA-DPB1</i> , <i>HLA-DRA</i>
5169	Epstein-Barr virus infection	3	0.0221 ^a	<i>HLA-DPA1</i> , <i>HLA-DPB1</i> , <i>HLA-DRA</i>
5166	HTLV-I infection	3	0.0465 ^a	<i>HLA-DPA1</i> , <i>HLA-DPB1</i> , <i>HLA-DRA</i>

^aKEGG pathway passed the 5% BH-FDR-corrected P-value. BH-FDR, Benjamini-Hochberg false discovery rate; *HLA-DPA1*, MHC class II, DP α 1; *HLA-DPB1*, MHC class II, DP β 1; *HLA-DRA*, MHC class II, DR α ; KEGG, Kyoto Encyclopedia of Genes and Genomes; MHC, major histocompatibility complex.

suggesting a potential role for *GHSROS* in breast cancer cell migration and tumour growth. These data expand on recent findings regarding *GHSROS* in lung cancer (19) and provide a rationale for further investigations into this lncRNA in cancer.

Acknowledgements

The authors would like to acknowledge the scientific and technical assistance of the Translational Research Institute Preclinical Imaging Facility.

Funding

This work was supported by the National Health and Medical Research Council Australia (grant nos. 1002255 and 1059021; to LKC, ACH, RNV and IS), the Cancer Council Queensland (grant no. 1098565; to ACH, RNV, LKC and IS), the Australian Research Council (grant no. DP140100249; to ACH and LKC), a QUT Vice-Chancellor's Senior Research Fellowship (to IS), the Movember Foundation and the Prostate Cancer Foundation of Australia through a Movember Revolutionary Team Award, the Australian Government Department of Health, and the Australian Prostate Cancer Research Centre, Queensland (LKC and CCN), Queensland University of Technology. The Translational Research Institute is supported by a grant from the Australian Government.

Availability of data and materials

The datasets generated and/or analysed during the current study are available in the Gene Expression Omnibus repository, [https://www.ncbi.nlm.nih.gov/geo/query/acc.cgi?acc=GSE35001]

Authors' contributions

PBT, IS, PLJ and LKC conceived and designed the study, and interpreted the data. PBT, AS, MM, IS, LKC and PLJ performed laboratory experiments. IS and PBT performed computational biology analyses. PBT, LKC, PLJ and IS wrote the article. All authors (PBT, IS, PLJ, MDG, MM, GJC, AS, ETS, CW, EJW, CCN, ACH, RML, RNV and LKC) contributed to the conception and design of the study, interpretation of the data and writing of the manuscript. LKC approved the final version of the manuscript.

Ethics approval and consent to participate

Experiments were approved by the University of Queensland and QUT animal ethics committees (TRI/QUT/328/16). Approval for cell line use was granted by the QUT Human Research Ethics Committee.

Patient consent for publication

Not applicable.

Competing interests

The authors declare that they have no competing interests.

References

- Mattick JS and Rinn JL: Discovery and annotation of long noncoding RNAs. *Nat Struct Mol Biol* 22: 5-7, 2015.
- Deveson IW, Hardwick SA, Mercer TR and Mattick JS: The Dimensions, dynamics, and relevance of the mammalian noncoding transcriptome. *Trends Genet* 33: 464-478, 2017.
- Hu X, Sood AK, Dang CV and Zhang L: The role of long noncoding RNAs in cancer: The dark matter matters. *Curr Opin Genet Dev* 48: 8-15, 2018.
- Quinn JJ and Chang HY: Unique features of long non-coding RNA biogenesis and function. *Nat Rev Genet* 17: 47-62, 2016.
- Sun M and Kraus WL: From discovery to function: The expanding roles of long non-coding RNAs in physiology and disease. *Endocr Rev*: Jan 7, 2015 (Epub ahead of print).
- Jemal A, Bray F, Center MM, Ferlay J, Ward E and Forman D: Global cancer statistics. *CA Cancer J Clin* 61: 69-90, 2011.
- Australian Institute of Health and Welfare: Cancer in Australia: Actual incidence data from 1982 to 2013 and mortality data from 1982 to 2014 with projections to 2017. *Asia Pac J Clin Oncol* 14: 5-15, 2018.
- ENCODE Project Consortium: The ENCODE (ENCyclopedia Of DNA Elements) Project. *Science* 306: 636-640, 2004.
- Kumar M, DeVaux RS and Herschkowitz JI: Molecular and cellular changes in breast cancer and new roles of lncRNAs in breast cancer initiation and progression. *Prog Mol Biol Transl Sci* 144: 563-586, 2016.
- Amorim M, Salta S, Henrique R and Jerónimo C: Decoding the usefulness of non-coding RNAs as breast cancer markers. *J Transl Med* 14: 265, 2016.
- Cerk S, Schwarzenbacher D, Adiprasito JB, Stotz M, Hutterer GC, Gerger A, Ling H, Calin GA and Pichler M: Current status of long non-coding RNAs in human breast cancer. *Int J Mol Sci* 17: 17, 2016.
- Soudyab M, Iranpour M and Ghafouri-Fard S: The role of long non-coding RNAs in breast cancer. *Arch Iran Med* 19: 508-517, 2016.
- Bhan A, Hussain I, Ansari KI, Kasiri S, Bashyal A and Mandal SS: Antisense transcript long noncoding RNA (lncRNA) HOTAIR is transcriptionally induced by estradiol. *J Mol Biol* 425: 3707-3722, 2013.
- He X, Bao W, Li X, Chen Z, Che Q, Wang H and Wan XP: The long non-coding RNA HOTAIR is upregulated in endometrial carcinoma and correlates with poor prognosis. *Int J Mol Med* 33: 325-332, 2014.
- Bhan A and Mandal SS: Estradiol-induced transcriptional regulation of long non-coding RNA, HOTAIR. *Methods Mol Biol* 1366: 395-412, 2016.
- Xue X, Yang YA, Zhang A, Fong KW, Kim J, Song B, Li S, Zhao JC and Yu J: lncRNA HOTAIR enhances ER signaling and confers tamoxifen resistance in breast cancer. *Oncogene* 35: 2746-2755, 2016.
- Aiello A, Bacci L, Re A, Ripoli C, Pierconti F, Pinto F, Masetti R, Grassi C, Gaetano C, Bassi PF, *et al*: MALAT1 and HOTAIR long non-coding RNAs play opposite role in estrogen-mediated transcriptional regulation in prostate cancer cells. *Sci Rep* 6: 38414, 2016.
- Arun G, Diermeier S, Akerman M, Chang KC, Wilkinson JE, Hearn S, Kim Y, MacLeod AR, Krainer AR, Norton L, *et al*: Differentiation of mammary tumors and reduction in metastasis upon Malat1 lncRNA loss. *Genes Dev* 30: 34-51, 2016.
- Whiteside EJ, Seim I, Pauli JP, O'Keeffe AJ, Thomas PB, Carter SL, Walpole CM, Fung JN, Josh P, Herington AC, *et al*: Identification of a long non-coding RNA gene, growth hormone secretagogue receptor opposite strand, which stimulates cell migration in non-small cell lung cancer cell lines. *Int J Oncol* 43: 566-574, 2013.
- Livak KJ and Schmittgen TD: Analysis of relative gene expression data using real-time quantitative PCR and the 2⁻(Delta Delta C(T)) method. *Methods* 25: 402-408, 2001.
- Ke N, Wang X, Xu X and Abassi YA: The xCELLigence system for real-time and label-free monitoring of cell viability. *Methods Mol Biol* 740: 33-43, 2011.
- Limame R, Wouters A, Pauwels B, Franssen E, Peeters M, Lardon F, De Wever O and Pauwels P: Comparative analysis of dynamic cell viability, migration and invasion assessments by novel real-time technology and classic endpoint assays. *PLoS One* 7: e46536, 2012.
- Ritchie ME, Phipson B, Wu D, Hu Y, Law CW, Shi W and Smyth GK: limma powers differential expression analyses for RNA-sequencing and microarray studies. *Nucleic Acids Res* 43: e47, 2015.
- Szklarczyk D, Morris JH, Cook H, Kuhn M, Wyder S, Simonovic M, Santos A, Doncheva NT, Roth A, Bork P, *et al*: The STRING database in 2017: Quality-controlled protein-protein association networks, made broadly accessible. *Nucleic Acids Res* 45: D362-D368, 2017.
- Hartigan JA and Wong MA: Algorithm AS 136: A k-means clustering algorithm. *J R Stat Soc Ser C Appl Stat* 28: 100-108, 1979.
- Du J, Yuan Z, Ma Z, Song J, Xie X and Chen Y: KEGG-PATH: Kyoto encyclopedia of genes and genomes-based pathway analysis using a path analysis model. *Mol Biosyst* 10: 2441-2447, 2014.
- Russell PJ, Raghavan D, Gregory P, Philips J, Wills EJ, Jelbart M, Wass J, Zbroja RA and Vincent PC: Bladder cancer xenografts: A model of tumor cell heterogeneity. *Cancer Res* 46: 2035-2040, 1986.
- Lim E, Modi KD and Kim J: In vivo bioluminescent imaging of mammary tumors using IVIS spectrum. *J Vis Exp*: Apr 29, 2009 (Epub ahead of print). doi: 10.3791/1210.
- Amir S, Simion C, Umeh-Garcia M, Krig S, Moss T, Carraway KL III and Sweeney C: Regulation of the T-box transcription factor Tbx3 by the tumour suppressor microRNA-206 in breast cancer. *Br J Cancer* 114: 1125-1134, 2016.
- Trowsdale J and Knight JC: Major histocompatibility complex genomics and human disease. *Annu Rev Genomics Hum Genet* 14: 301-323, 2013.
- Boegel S, Löwer M, Schäfer M, Bukur T, de Graaf J, Boisguérin V, Türeci O, Diken M, Castle JC and Sahin U: HLA typing from RNA-Seq sequence reads. *Genome Med* 4: 102, 2012.
- Tabibzadeh SS, Sivarajah A, Carpenter D, Ohlsson-Wilhelm BM and Satyaswaroop PG: Modulation of HLA-DR expression in epithelial cells by interleukin 1 and estradiol-17 beta. *J Clin Endocrinol Metab* 71: 740-747, 1990.
- Kocatürk B and Versteeg HH: Orthotopic injection of breast cancer cells into the mammary fat pad of mice to study tumor growth. *J Vis Exp*: Feb 8, 2015 (Epub ahead of print). doi: 10.3791/51967.
- Lanzós A, Carlevaro-Fita J, Mularoni L, Reverter F, Palumbo E, Guigó R and Johnson R: Discovery of cancer driver long noncoding RNAs across 1112 tumour genomes: New candidates and distinguishing features. *Sci Rep* 7: 41544, 2017.
- Qiu MT, Hu JW, Yin R and Xu L: Long noncoding RNA: An emerging paradigm of cancer research. *Tumour Biol* 34: 613-620, 2013.
- Wenric S, ElGuendi S, Caberg JH, Bezzaou W, Fasquelle C, Charlotteaux B, Karim L, Hennuy B, Frères P, Collignon J, *et al*: Transcriptome-wide analysis of natural antisense transcripts shows their potential role in breast cancer. *Sci Rep* 7: 17452, 2017.
- Nie L, Wu HJ, Hsu JM, Chang SS, Labaff AM, Li CW, Wang Y, Hsu JL and Hung MC: Long non-coding RNAs: Versatile master regulators of gene expression and crucial players in cancer. *Am J Transl Res* 4: 127-150, 2012.
- Pan YF, Feng L, Zhang XQ, Song LJ, Liang HX, Li ZQ and Tao FB: Role of long non-coding RNAs in gene regulation and oncogenesis. *Chin Med J (Engl)* 124: 2378-2383, 2011.
- Collette J, Le Bourhis X and Adriaenssens E: Regulation of human breast cancer by the long non-coding RNA H19. *Int J Mol Sci* 18: 18, 2017.
- Miao Y, Fan R, Chen L and Qian H: Clinical significance of long non-coding RNA MALAT1 expression in tissue and serum of breast cancer. *Ann Clin Lab Sci* 46: 418-424, 2016.
- Avazpour N, Hajjari M and Tahmasebi Birgani M: HOTAIR: A promising long non-coding RNA with potential role in breast invasive carcinoma. *Front Genet* 8: 170, 2017.
- Chiu HS, Somvanshi S, Patel E, Chen TW, Singh VP, Zorman B, Patil SL, Pan Y, Chatterjee SS, Sood AK, *et al*: Cancer Genome Atlas Research Network: Pan-Cancer Analysis of lncRNA regulation supports their targeting of cancer genes in each tumor context. *Cell Rep* 23: 297-312.e12, 2018.
- Iorns E, Drews-Elger K, Ward TM, Dean S, Clarke J, Berry D, El Ashry D and Lippman M: A new mouse model for the study of human breast cancer metastasis. *PLoS One* 7: e47995, 2012.

44. Nagini S: Breast Cancer: Current molecular therapeutic targets and new players. *Anticancer Agents Med Chem* 17: 152-163, 2017.
45. Cavo M, Fato M, Peñuela L, Beltrame F, Raiteri R and Scaglione S: Microenvironment complexity and matrix stiffness regulate breast cancer cell activity in a 3D in vitro model. *Sci Rep* 6: 35367, 2016.
46. Kopparapu PK, Tinzl M, Anagnostaki L, Persson JL and Dizeyi N: Expression and localization of serotonin receptors in human breast cancer. *Anticancer Res* 33: 363-370, 2013.
47. Pai VP, Marshall AM, Hernandez LL, Buckley AR and Horseman ND: Altered serotonin physiology in human breast cancers favors paradoxical growth and cell survival. *Breast Cancer Res* 11: R81, 2009.
48. Li J, Weinberg MS, Zerbini L and Prince S: The oncogenic TBX3 is a downstream target and mediator of the TGF- β 1 signaling pathway. *Mol Biol Cell* 24: 3569-3576, 2013.
49. Peres J, Davis E, Mowla S, Bennett DC, Li JA, Wansleben S and Prince S: The highly homologous T-Box transcription factors, TBX2 and TBX3, have distinct roles in the oncogenic process. *Genes Cancer* 1: 272-282, 2010.
50. Forero A, Li Y, Chen D, Grizzle WE, Updike KL, Merz ND, Downs-Kelly E, Burwell TC, Vaklavas C, Buchsbaum DJ, *et al*: Expression of the MHC Class II pathway in triple-negative breast cancer tumor cells is associated with a good prognosis and infiltrating lymphocytes. *Cancer Immunol Res* 4: 390-399, 2016.
51. Doonan BP and Haque A: HLA Class II antigen presentation in prostate cancer cells: A novel approach to prostate tumor immunotherapy. *Open Cancer Immunol J* 3: 1-7, 2010.
52. Thibodeau J, Bourgeois-Daigneault MC and Lapointe R: Targeting the MHC Class II antigen presentation pathway in cancer immunotherapy. *Oncol Immunology* 1: 908-916, 2012.
53. Walsh NC, Kenney LL, Jangalwe S, Aryee KE, Greiner DL, Brehm MA and Shultz LD: Humanized mouse models of clinical disease. *Annu Rev Pathol* 12: 187-215, 2017.
54. Zhao Y, Shuen TWH, Toh TB, Chan XY, Liu M, Tan SY, Fan Y, Yang H, Lyer SG, Bonney GK, *et al*: Development of a new patient-derived xenograft humanised mouse model to study human-specific tumour microenvironment and immunotherapy. *Gut* 67: 1845-1854, 2018.



This work is licensed under a Creative Commons Attribution-NonCommercial-NoDerivatives 4.0 International (CC BY-NC-ND 4.0) License.