

Research Paper

A novel gene signature combination improves the prediction of overall survival in urinary bladder cancer

Siteng Chen^{1*}, Ning Zhang^{2*}, Jialiang Shao¹, Tao Wang¹, Xiang Wang¹✉

1. Department of Urology, Shanghai General Hospital, Shanghai Jiao Tong University School of Medicine, Shanghai, China
2. Department of Urology, Ruijin Hospital, Shanghai Jiao Tong University School of Medicine, Shanghai, China

*These authors contributed equally to this work.

✉ Corresponding author: Xiang Wang, Department of Urology, Shanghai General Hospital, Shanghai Jiao Tong University School of Medicine, Shanghai, China. E-mail: drseanwang@163.com

© The author(s). This is an open access article distributed under the terms of the Creative Commons Attribution License (<https://creativecommons.org/licenses/by/4.0/>). See <http://ivyspring.com/terms> for full terms and conditions.

Received: 2018.09.30; Accepted: 2019.04.23; Published: 2019.10.03

Abstract

Objectives: Bladder carcinoma is a clinical heterogeneous disease, which is with significant variability of the prognosis and high risk of death. This revealed prominently the need to identify high-efficiency cancer characteristics to predict clinical prognosis.

Methods: Gene expression profiles of 93 bladder tumor patients from Gene Expression Omnibus data sets was performed in this study, along with 408 bladder tumor patients retrieved from The Cancer Genome Atlas database. The relationship of gene signature and overall survival was analyzed in the training cohort (n = 46). The validation for that was performed in an internal validation cohort (n = 47) and an external validation cohort (n = 408).

Results: Four genes (TMPRSS11E, SCEL, KRT78, TMEM185A) were identified by univariable and multivariable Cox regression analysis. According to a risk score on the bases on the four-gene signature, we grouped these patients in high-risk group and low-risk group with significantly different overall survival in the training series and successfully validated it in both the internal and external validation cohorts. Subsequent studies demonstrated that the four-gene expression risk score was independent of radical cystectomy stage, chemotherapy and lymph node status. Higher rates of *FAT4* mutation and *MACF1* mutation in bladder tumors with high risk score were found compared with tumors with low risk score. Gene set enrichment analysis revealed high-risk score was associated with some tumor progression and recurrence associated pathways.

Conclusions: This four-gene risk score might have potential clinical implications in the selection of high-risk urinary bladder cancer patients for aggressive therapy. The selected four genes might become potential therapeutic targets and diagnostic markers for urinary bladder cancer.

Key words: Urinary bladder cancer, Gene signature, Overall Survival, GSEA, TCGA

Introduction

As the seventh most widely diagnosed carcinoma in the male population around the world [1], urinary bladder cancer has become one of the main death causes of Urologic cancer. And in 2017, approximately 81,190 new cancer cases and 17,240 cancer deaths related to urinary bladder cancer are estimated to occur in United States [2]. Muscle-invasive urinary bladder cancer (MIBC) makes up for about 25% of initially diagnosed bladder carcinoma cases, whereas up to 10% to 15% of patients with non-muscle-invasive urinary bladder cancer (NMIBC) will progress to MIBC [3, 4]. More

importantly, approximately 5% to 15% of urinary bladder cancer patients are together with metastatic disease at the time of initial diagnosis [5]. Accurate prediction of tumor progression and survival is important to determine the appropriate diagnosis and therapy decision. Thus, there is a clear need for predictive and prognostic markers that can identify tumor characteristics and predict clinical behavior.

Recently, gene signature has been used widely for risk stratification of patients with cancer [6]. Many urinary bladder cancer gene signatures are reported to classify urinary bladder cancer patients into groups

with distinct clinical outcomes [7-9]. However, most current gene signatures for urinary bladder cancer relate to disease diagnosis only, with limited information about the prognostic value estimation, which will limit the clinical application of these signatures.

This current study is based on publicly available data sets, resulting in developing special genetic biomarkers associated with urinary bladder cancer survival closely, and evaluating the predictive value of this gene expression signature among urinary bladder cancer patients.

Materials and Methods

Gene profiles and microarray data

Raw CEL data and corresponding clinical data of microarray data from GSE31684 data sets [10], which used the Human Genome U133 Plus 2.0 chips platform of Affymetrix, were retrieved from Gene Expression Omnibus (GEO) database and then background adjusted by Robust Multichip Average [11]. Gene profiles and clinical data for bladder tumors were downloaded from The Cancer Genome Atlas (TCGA) data base (March 2018). Patient

selection was restricted to the urinary bladder cancer patients with gene expression data and essential clinical data, including clinical outcome and staging information. Patients without clinical survival information were removed from the study. In addition, patients with an overall survival (OS) of less than 1 month were also eliminated owing to possible unrelated causes of death. Finally, 93 patients from GSE31684 series and 408 patients from TCGA database were included in our study. The urinary bladder cancer samples of GSE31684 series were stochastic grouped into a training cohort (n = 46) or an internal validation cohort (n = 47). Additionally, urinary bladder cancer samples in TCGA database were analyzed as an external validation cohort. Mutation annotation format (MAF) of the TCGA cohort was also analyzed by the package of "maftools" to summarize, analyze, annotate and visualize MAF files in an efficient manner [12]. The demographic, clinical and pathological information of bladder cancer patients from the GSE31684 and TCGA cohorts were shown in Table 1. The work has been reported in line with the REMARK criteria.

Table 1. Demographic, clinical and pathological information of the GSE31684 and TCGA cohorts.

	GSE31684		TCGA	
	Total	Training cohort	Validation cohort	Validation cohort
No. of patients	93	46	47	408
Age (year)				
Mean	69.1	68.6	69.7	68.1
Range	41.7~91.1	47.5~85.1	41.7~91.1	34.0~90.0
Gender				
Male	68(73.1%)	33(71.7%)	35(74.5%)	301(73.8%)
Female	25(26.9%)	13(28.3%)	12(25.5%)	107(26.2%)
Tumor stage				
Ta/T1	15(16.1%)	9(19.6%)	6(12.8%)	4(1.0%)
T2	17(18.3%)	7(15.2%)	10(21.3%)	119(29.2%)
T3	42(45.2%)	20(43.5%)	22(46.8%)	194(47.5%)
T4	19(20.4%)	10(21.7%)	9(19.1%)	58(14.2%)
Unknown	0	0	0	33(8.1%)
Tumor grade				
High	6(6.5%)	42(91.3%)	45(95.7%)	384(94.1%)
Low	87(93.5%)	4(8.7%)	2(4.3%)	21(5.1%)
Unknown	0	0	0	3(0.8%)
Lymph node status				
Positive	28(30.1%)	13(28.3%)	15(31.9%)	129(31.6%)
Negative	49(52.7%)	25(54.3%)	24(51.1%)	237(58.1%)
Unknown	16(17.2%)	8(17.4%)	8(17.0%)	42(10.3%)
Adjuvant therapy	35(37.6%)	18(39.1%)	17(36.2%)	10(2.5%)
Smoking packs/year				
Mean	35.2	35	35.4	39
Range	0~120	0~120	0~120	0~730
Informed consent (yes)	93(100%)	46(100%)	47(100%)	408(100%)
OS (month)				
Mean	47.5	51.6	43.4	27
Range	0.39~175.5	0.39~175.5	0.66~173.4	0.43~168.3
Vital status				
Living	28(30.1%)	13(28.3%)	15(31.9%)	228(55.9%)
Dead	65(69.9%)	33(71.7%)	32(68.1%)	180(44.1%)
Recurrence/progression	39(41.9%)	20(43.5%)	19(40.4%)	141(34.6%)

Informed consent were accomplished by researchers of the GSE31684 and TCGA cohorts; TCGA, The Cancer Genome Atlas; OS, overall survival.

Construction of risk score

Univariable Cox regression analysis together with a permutation test [13] was used to explore the relationship of gene expression and OS. Genes would be considered with strong correlation with survival if they had a permutation p value less than 0.001 [14], and then analyzed in the training series by multivariable Cox regression analysis. Genes were finally selected if their p values were less than 0.05 in the multivariable Cox analysis. Thus, we could establish the risk score formula by weighting multivariable regression coefficients of each selected gene. Patients were split into high risk group and low risk group using the median risk score of each series as a cutoff point. Diagram of the construction of risk score was shown in Fig. 1.

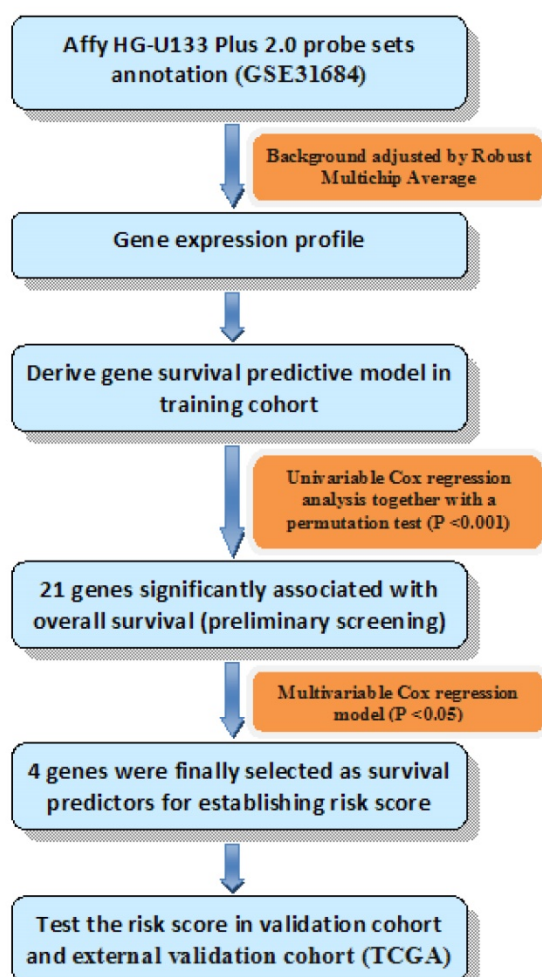


Fig. 1. Diagram of the construction of risk score. The order of analyses to develop the risk score model and validate the efficiency of the gene signature to predict overall survival.

We performed a data stratification analysis and multivariable Cox regression analysis to verify the prediction power of risk score in bladder carcinoma patients. Receiver operating characteristic (ROC)

curves and area under the curve (AUC) were calculated to contrast the specificity and sensitivity of OS status predictions at follow-up on the bases of genetic risk score, radical cystectomy (RC) stages and lymph node status.

Gene Set Enrichment analysis

Gene Set Enrichment Analysis (GSEA) was set up in TCGA series using a molecular signatures database (MSigDB) C2 CP: Canonical pathway gene set collection [15]. The GSEA, which was visualized in Enrichment Map software and Cytoscape [16], was applied to determine if the members of a given gene set were strikingly associated with our risk score. We carried out random sample permutations of 1000. The significance threshold was set at false discovery rate (FDR) < 0.01.

Statistical analysis

Kaplan–Meier estimate was used for comparing survival differences between the low-risk group and the high-risk group. Hazard ratio (HR) with a 95% confidence interval (CI) was used in Cox regression analysis. And a P value less than 0.05 was considered significant. All the data were analyzed by R program 3.3.2 (www.rproject.org) and SPSS 13.0 (SPSS Inc., Chicago, IL, USA).

Results

Identification of prognostic genes and risk score formula in the training cohort

Firstly, we discovered a series of twenty-one genes with a parametric P value less than 0.001 by univariable Cox regression analysis. These twenty-one genes were further analyzed by applying multivariable Cox regression analysis in the training cohort. With this method, only four genes with P value less than 0.05 were selected as the predictors (Table 2).

Table 2. Genes significantly associated with the overall survival in the training cohort (N= 46).

Gene symbol	RNA type	Chromosome location	Hazard ratio	Coefficient
TMPRSS11E	mRNA	4q13.2	2.199	1.414
SCEL	mRNA	13q22.3	1.661	2.471
KRT178	mRNA	12q13.13	11.98	5.305
TMEM185A	mRNA	Xq28	0.236	-2.988

Next, the risk score formula was established on the bases of the 4-gene expressions for OS prediction, as follows: risk score = (1.414*expression level of TMPRSS11E) + (2.471*expression level of SCEL) + (5.305*expression level of KRT178) + (-2.988*expression level of TMEM185A).

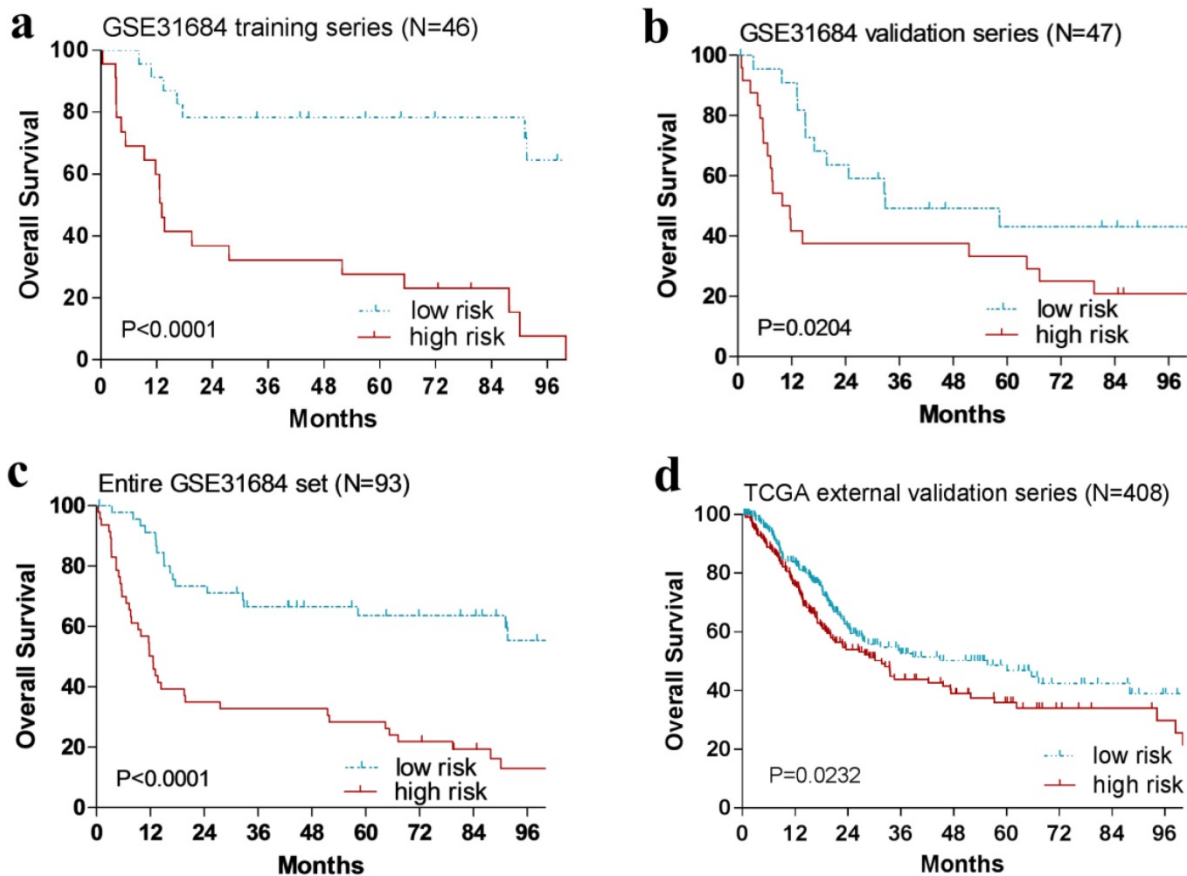


Fig. 2. Kaplan-Meier estimates of the overall survival (OS) of urinary bladder cancer patients using the four-gene signature. The Kaplan-Meier plots were used to visualize the OS probabilities for the low-risk versus high-risk group of patients based on the median risk score from corresponding datasets patients. (a) Kaplan-Meier curves for GSE31684 training series patients (N = 46); (b) Kaplan-Meier curves for GSE31684 validation series patients (N = 47); (c) Kaplan-Meier curves for the entire GSE31684 set patients (N = 93). (d) Kaplan-Meier curves for the external TCGA validation series patients (N = 408). The tick marks on the Kaplan-Meier curves represent the censored subjects. The differences between the two curves were determined by the two-side log-rank test.

The relationship between four-gene signature risk score and OS in the training series

With the risk score formula above, the patients in the training cohort (n = 46) were grouped into a high-risk group (n = 23) or a low-risk group (n = 23) by the median risk score. And patients with high-risk score had remarkably shorter OS than those in the low-risk group ($P < 0.0001$, Fig. 2a).

Validation of this four-gene signature risk score for OS prediction in the internal and external validation series.

In order to confirm our findings, we repeated the survival analysis in the internal validation cohort (n = 47). Similarly, patients with a high risk score had a notable shorter OS than that in the low-risk group ($P = 0.0204$, Fig. 2b). We further validated our four-gene signature in the external TCGA validation cohort (n = 408). Specifically, patients could also be segregated into a low-risk group and a high-risk group by the median risk score of TCGA cohort ($P = 0.0232$, Fig. 2d).

The predictive accuracy of the four-gene signature risk score compared with other clinical factors

The Cox regression analysis revealed that our four-gene risk score was strikingly associated with survival as a continuous variable in the entire GSE31684 cohort and TCGA cohort (Table 3). In the entire GSE31684 dataset, only the risk score, muscle invasion and lymph node status were remarkably associated with OS. Next, we carried out multivariable Cox regression proportional hazards regression analysis to explore whether our four-gene risk score could act as an independent survival predictor. Similar results of Cox regression analysis were also observed in the TCGA cohort. These results demonstrated that our risk score was still significantly associated with the OS when adjusted by age at diagnosis, muscle invasion, lymph node status and chemotherapy, which suggests that the four-gene signature risk score could serve as an independent survival predictor for urinary bladder cancer.

Assessment of the risk prediction model

We next to perform ROC analysis to evaluate the specificity and sensitivity of the OS status prediction at ten-year follow-up by the four-gene signature risk score, RC stage and lymph node status in the entire GSE31684 data set patients. Notably, we found a better AUC of four-gene signature score compared with RC stages, even though without significant difference (0.761 versus 0.618, $P = 0.098$, Fig. 3). However, our risk score was strikingly superior to lymph node status (0.761 versus 0.542, $P = 0.017$).

The prognostic risk score is independent of RC stages and postoperative chemotherapy

Additionally, we performed data stratification analysis to find whether the four-gene signature was independent of RC stage and chemotherapy. Our results revealed that this risk score also could divide urinary bladder cancer samples into those with longer survival and those with shorter survival in each RC stage subgroup (Fig. 4). Similarly, among those patients with or without chemotherapy, the four-gene signature risk score could also distinguish between patients with the significantly different OS (Fig. 5).

Table 3. Univariable and multivariable Cox regression analyses in the GSE31684 and TCGA cohorts.

Variables	Univariable model			Multivariable model		
	HR	95%CI	P value	HR	95%CI	P value
GSE31684 (N=96)						
Risk score	1.104	1.063~1.147	<0.0001	1.072	1.025~1.121	0.002
Age	1.012	0.986~1.038	0.365	1.008	0.976~1.041	0.619
Muscle invasive	3.166	1.360~7.372	0.008	2.489	1.024~6.048	0.044
Lymph node status	2.346	1.298~4.241	0.005	2.057	1.049~4.035	0.036
Chemotherapy	1.158	0.698~1.921	0.57	0.661	0.350~1.250	0.203
TCGA (N=408)						
Risk score	1.005	1.002~1.008	<0.001	1.004	1.001~1.008	0.016
Age	1.032	1.017~1.048	<0.0001	1.033	1.016~1.050	<0.001
Tumor stage (T _a ~T ₂ vs T ₃ ~T ₄)	2.115	1.461~3.062	<0.0001	1.671	1.113~2.508	0.013
Lymph node status	2.258	1.651~3.089	<0.0001	1.876	1.351~2.605	<0.001

HR, hazard ratio; CI, confidence interval; TCGA, The Cancer Genome Atlas.

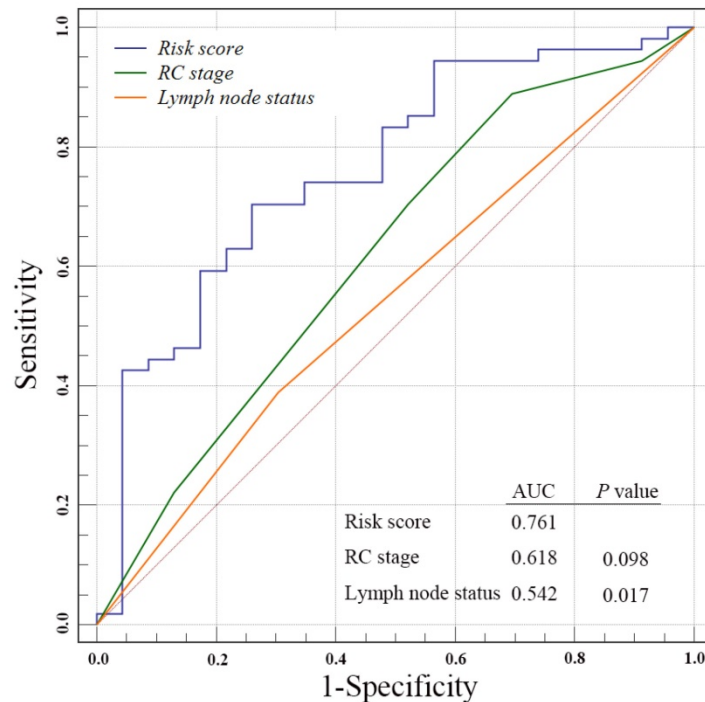


Fig. 3. Receiver operating characteristic(ROC) analysis of the sensitivity and specificity of the overall survival status prediction at ten-year follow-up by the four-gene signature risk score, radical cystectomy (RC) stage and lymph nodes status in the entire GSE31684 data set patients. P values were from the comparisons of the area under the curve (AUC) of four-gene signature risk score versus those of RC stage and lymph nodes status respectively. The predictive ability of risk score was equivalent to RC stage ($P = 0.098$), but better than lymph nodes status ($P = 0.017$)

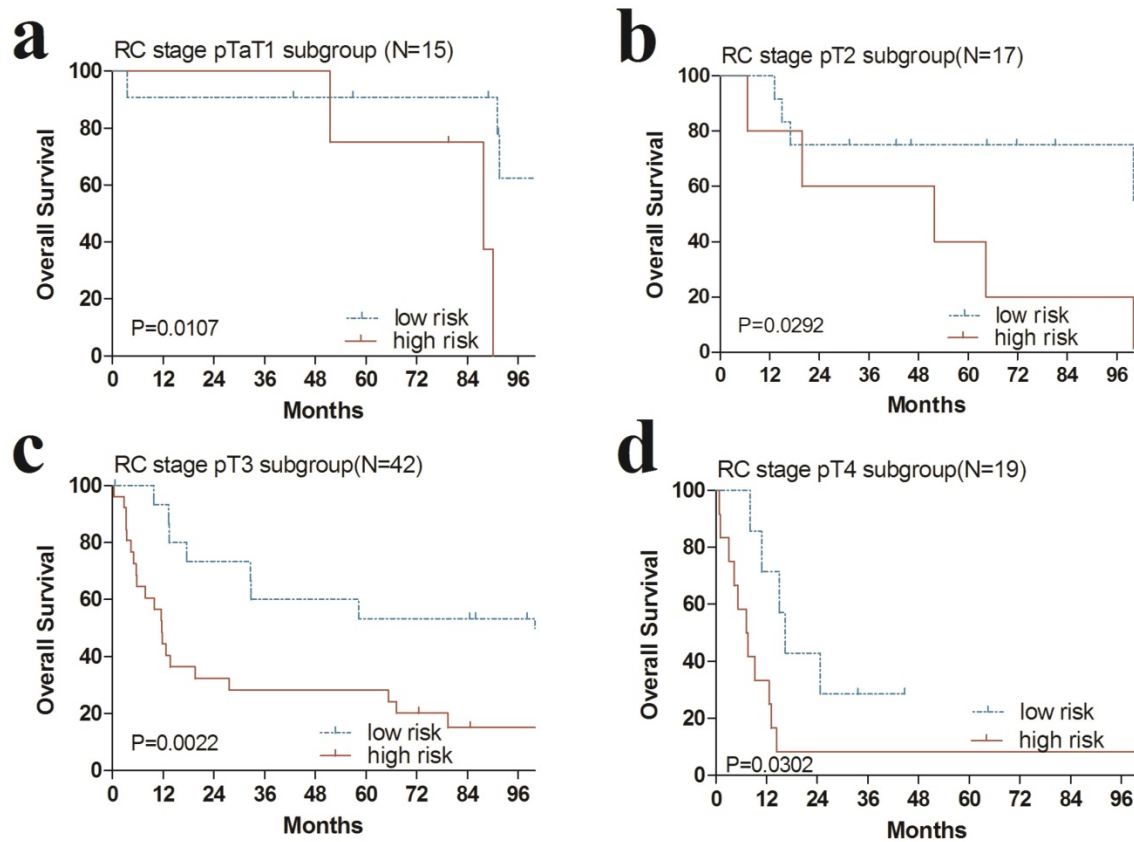


Fig. 4. Kaplan-Meier estimates of the overall survival (OS) of GEO patients using the four-gene signature, stratified by radical cystectomy (RC) stage (pT1, pT2, pT3 & pT4). Kaplan-Meier plots were then used to visualize the survival probabilities for the high-risk versus low-risk group of patients determined on the basis of the median risk score from the entire GSE31684 set patients within each RC stage. (a) Kaplan-Meier curves for patients with RC stage pT1 (N=15); (b) Kaplan-Meier curves for patients with RC stage pT2 (N=17); (c) Kaplan-Meier curves for patients with RC stage pT3 (N=42); (d) Kaplan-Meier curves for patients with RC stage pT4 (N=19). The tick marks on the Kaplan-Meier curves represent the censored subjects. The differences between the two curves were determined by the two-sided log-rank test.

Identification of four-gene risk score correlated biological pathways

We next explored whether bladder tumors with high risk score were associated with specific tumor mutation. Alteration landscape bladder tumors with high or low risk scores were shown in Fig. 6. Eight genes were mutated in >19% of samples with high risk score: *TTN* (51%), *MUC16* (32%), *TP53* (27%), *KMT2D* (24%), *HMCN1* (21%), *MACF1* (20%), *FAT4* (19%) and *XIRP2* (19%). While ten genes were mutated in >19% of samples with low risk score: *TTN* (50%), *TP53* (50%), *KMT2D* (28%), *MUC16* (27%), *KDM6A* (25%), *FRG1B* (23%), *ARID1A* (21%), *SYNE1* (21%), *RYR2* (20%) and *HMCN1* (20%). Specifically, higher rates of *FAT4* mutation and *MACF1* mutation in bladder tumors with high risk score were found compared with tumors with low risk score. GSEA analysis revealed that high-risk score tended to be accompanied by a number of up-regulated networks including cancer progression and recurrence associated pathways (Fig. 7a). Bladder cancer patients with recurrence/progression tended to get a risk score higher than those with disease free (Fig. 7b).

Discussion

Tumor stages and tumor grades are important predictors of tumor prognosis. Nevertheless, histopathological classifications tend to be limited by observer variability [17, 18]. Recently urinary bladder cancer gene expression signatures have been generally applied to predict cancer characteristics and outcomes. For example, Smith SC [8] found a twenty-gene signature with statistically significant correlation with disease development among patients with urinary bladder cancer. Heijden [9] developed a five-gene expression signature to predict progression in T1G3 urinary bladder cancer. However, there are few relevant gene signatures reported to directly predict OS for patients with urinary bladder cancer. Here, we found a four-gene signature risk score remarkably associated with the OS of urinary bladder cancer, which was independent of RC stages and postoperative chemotherapy.

Our study has some novel approaches and findings. Firstly, compared to previous studies related to disease diagnosis only, our study focused on direct overall survival prediction of urinary bladder cancer patients, which were poorly reported before.

Secondly, Cox regression analysis together with a permutation test (P value less than 0.001) and stratification analysis were performed to explore the relationship of gene expression and overall survival of bladder cancer. And thirdly, we firstly identified a set of 4 genes (*TMPRSS11E*, *SCEL*, *KRT78*, *TMEM185A*) that were significantly associated with poor overall survival of bladder cancer patients, some of which have not been investigated in urinary bladder cancer before. Moreover, we also revealed higher mutation rates of *FAT4* and *MACF1* in bladder tumors with higher risk score.

These four genes might become the potential therapeutic targets. They are worthy of further investigation to understand their role in the progression of bladder tumor. For example, the expression of *TMEM185A* (transmembrane protein 185A) was tended to be down-regulated clones among patients with stage III serous ovarian carcinoma [19]. *TMPRSS11E* (transmembrane protease, serine 11E) could suppress esophageal squamous cell carcinoma development by sensitizing cells to apoptosis under an apoptotic stimulus through downregulating the EGFR/AKT signaling pathway [20], but recently was found significantly upregulated in urinary bladder cancer patients [21], which was consistent with our study outcomes.

Higher rates of *FAT4* mutation and *MACF1* mutation in bladder tumors with high risk score were found compared with tumors with low risk score. GSEA analysis revealed that high-risk score tended to be accompanied by a number of up-regulated networks including cancer progression and recurrence associated pathways. For instance, *TAP63* pathway and *IL1* pathway were implicated in cancer progression and recurrence [22, 23]. Since tumor progression and recurrence are important risk factors for OS, we next to explore the difference of risk scores of samples with and without progression/recurrence by the TCGA cohort. Notably, patient with recurrence/progression tended to get a risk score higher than those with disease free.

By applying the four-gene risk scores to GSE31684 training cohort, a distinct separation was found in survival curves between patients with high-risk or low-risk signatures. The urinary bladder cancer patients with high-risk gene signatures tended to get shortened overall survival, while those with a low-risk signature tended to possess prolonged survival. The usefulness of the four-gene risk score could be validated in both the internal and external validation cohorts, indicating good reproducibility of our risk score for urinary bladder cancer patients.

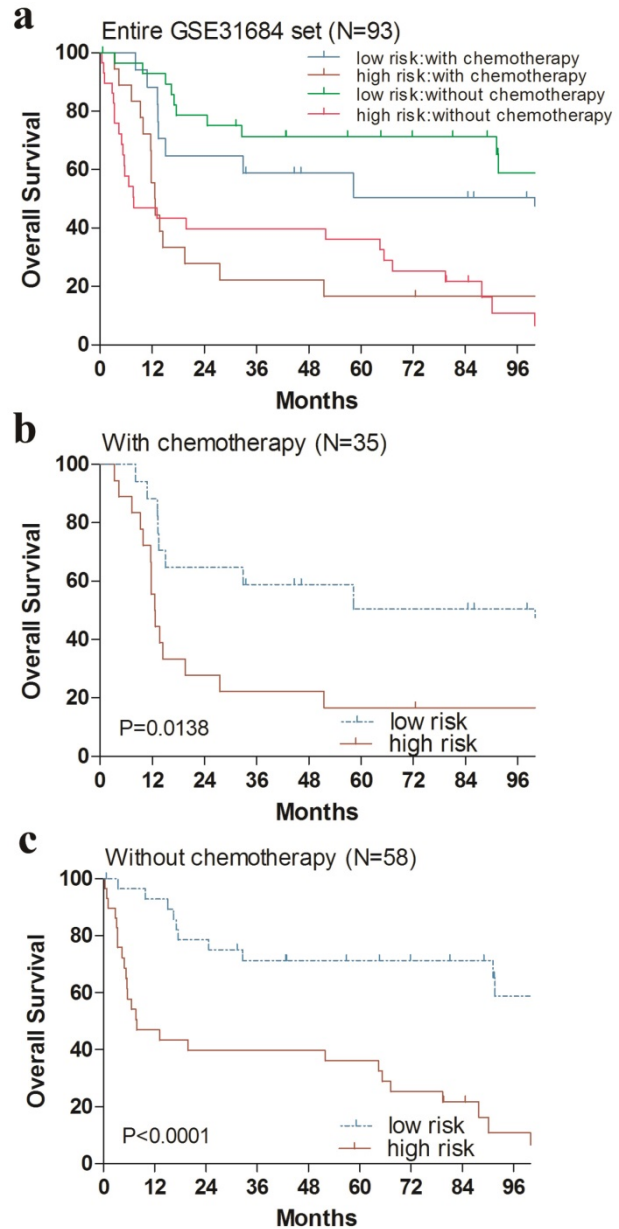


Fig. 5. Kaplan-Meier estimates of the overall survival (OS) of GEO patients using the four-gene signature risk score, stratified by postoperative chemotherapy. Entire GSE31684 data set (N=93) were first stratified by postoperative chemotherapy (with or without postoperative chemotherapy). Kaplan-Meier plots were then used to visualize the survival probabilities for the high-risk versus low-risk group of patients determined on the basis of the median risk score from the entire GSE31684 data set patients within each postoperative chemotherapy stratum. (a) Kaplan-Meier curves for the entire GSE31684 data set patients (N = 93); (b) Kaplan-Meier curves for patients with postoperative chemotherapy (N=35); (c) Kaplan-Meier curves for patients without postoperative chemotherapy (N=58). The tick marks on the Kaplan-Meier curves represent the censored subjects. The differences between the two curves were determined by the two-sided log-rank test.

Subsequent Cox proportional hazards regression analysis demonstrated that our predictive risk score was independent of some other importance prognostic clinical factors, including muscle invasive and lymph node status. Muscle-invasive disease is very important because the treatment and pathogenesis differ from MIBC to NMIBC [1, 24]. As a result, it is of great importance to identify whether the

prognostic value of this risk score is connected with the strong predictive clinical factor. Using multivariable Cox regression analysis, we identified that the prognostic value of our risk score was independent in MIBC patients.

Subsequently, stratification analysis suggested that the predictive value of the four-gene risk score was independent of RC stage and postoperative chemotherapy. An obvious OS benefit was found in a large retrospective cohort analysis in 3974 patients, with an HR of 0.75 for the high-risk subgroup with adjuvant chemotherapy [25]. In this research, we observed that patients with urinary bladder cancer could be grouped into high-risk groups or low-risk groups by the four-gene risk score despite of chemotherapy stratum. Similarly, among those patients in each RC stage subgroup, the four-gene signature risk score could also distinguish between patients with the significantly different OS. All of this above strongly demonstrated that the four-gene signature risk score might serve as a remarkably prognostic factor for urinary bladder cancer.

The TNM staging system, which includes primary tumor stage, lymph node and distant

metastasis, is the most accepted to be used to evaluate and predict the risk of tumor development and progression in clinical practice [26]. In this study, the survival predictive value of the four-gene risk score was stronger than that of the RC stage in the ROC analysis(AUC: 0.761 versus 0.618), although without statistical significance ($P = 0.098$), but was significantly stronger than that of lymph node status (AUC: 0.761 versus 0.542, $P = 0.017$). These results demonstrated the potential prognostic power of our gene signature risk score in clinical.

Our research has some limitations. Firstly, we have not verified this risk score in a clinical trial. Secondly, the median risk score was used as a cutoff point for classifying as previous reports [14, 27], but a prior cutoff point should be found in further studies to more scientifically split patients in high-risk group or low-risk group. Finally, this bioinformatics analysis of the four-gene signature was not carried out in this study, and the biological roles of several genes in this signature were not clear, which should be investigated in further fundamental researches.



Fig. 6. Alteration landscape for 204 bladder tumors with high risk score and 204 low-risk bladder tumors in TCGA cohort. Higher rates of *FAT4* mutation and *MACF1* mutation in bladder tumors with high risk score were found compared with tumors with low risk score.

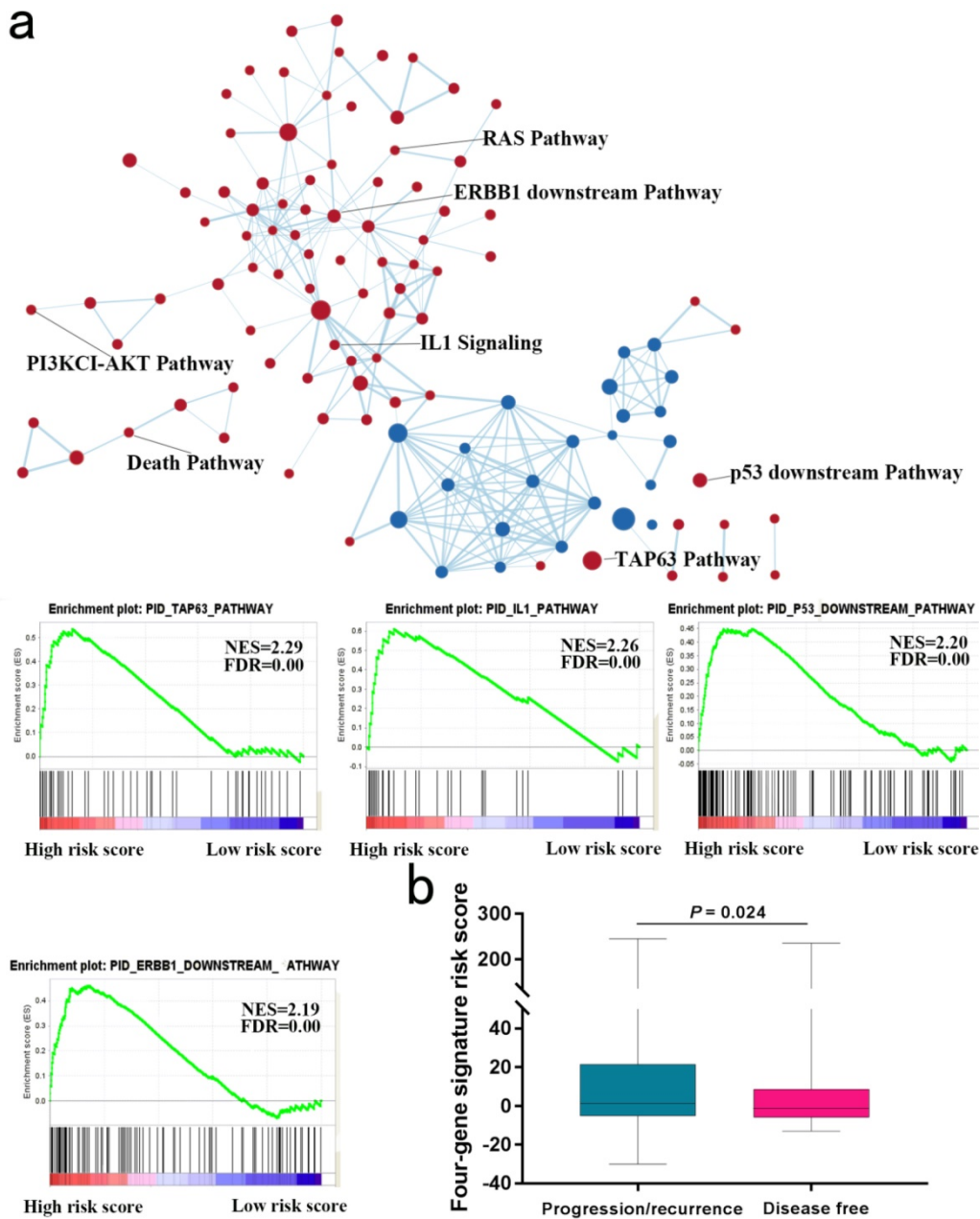


Fig. 7. Gene Set Enrichment Analysis in TCGA database. (a) Gene Set Enrichment Analysis Delineates Biological Pathways and Processes associated with risk score. Cytoscape and Enrichment Map were used for visualization of the GSEA results. (b) Risk score of patients with or without progression/recurrence in TCGA series.

Conclusion

In summary, we had identified a four-gene signature that was useful in overall survival prediction in urinary bladder cancer patients. The selected four genes might become potential therapeutic targets and diagnostic markers for urinary bladder cancer. Future studies will concentrate on functional approaches of the selected four genes and validation of our risk score in clinical trials.

Abbreviations

MIBC: muscle-invasive urinary bladder cancer; NMIBC: non-muscle-invasive urinary bladder cancer;

GEO: Gene Expression Omnibus; TCGA: The Cancer Genome Atlas; OS: overall survival; HR: hazard ratio; CI: confidence interval; RC: radical cystectomy; GSEA: Gene Set Enrichment Analysis; FDR: false discovery rate; ROC: receiver operating characteristic; AUC: curves and area under the curve.

Acknowledgements

This work was supported by the National Natural Science Foundation of China (81570607) and the three-year action plan for promoting clinical skills and clinical innovation in municipal hospitals of Shanghai Shenkang (16CR2003A).

Competing Interests

The authors have declared that no competing interest exists.

References

- Babjuk M, Bohle A, Burger M, Capoun O, Cohen D, Comperat EM, et al. EAU Guidelines on Non-Muscle-invasive Urothelial Carcinoma of the Bladder: Update 2016. *European urology*. 2017; 71: 447-461.
- Siegel RL, Miller KD, Jemal A. Cancer statistics, 2018. *CA: a cancer journal for clinicians*. 2018; 68: 7-30.
- Abufaraj M, Dalbagni G, Daneshmand S, Horenblas S, Kamat AM, Kanzaki R, et al. The Role of Surgery in Metastatic Bladder Cancer: A Systematic Review. *European urology*. 2017; 73: 543-557.
- Millan-Rodriguez F, Chechile-Toniolo G, Salvador-Bayarri J, Palou J, Vicente-Rodriguez J. Multivariate analysis of the prognostic factors of primary superficial bladder cancer. *The Journal of urology*. 2000; 163: 73-78.
- Kamat AM, Hegarty PK, Gee JR, Clark PE, Svatek RS, Hegarty N, et al. ICUD-EAU International Consultation on Bladder Cancer 2012: Screening, diagnosis, and molecular markers. *European urology*. 2013; 63: 4-15.
- McDermott U, Downing JR, Stratton MR. Genomics and the continuum of cancer care. *The New England journal of medicine*. 2011; 364: 340-350.
- Kim YJ, Ha YS, Kim SK, Yoon HY, Lym MS, Kim MJ, et al. Gene signatures for the prediction of response to Bacillus Calmette-Guerin immunotherapy in primary pT1 bladder cancers. *Journal of Urology*. 2011; 185: 468-469.
- Smith SC, Baras AS, Dancik G, Ru Y, Ding KF, Moskaluk CA, et al. A 20-gene model for molecular nodal staging of bladder cancer: development and prospective assessment. *The Lancet Oncology*. 2011; 12: 137-143.
- Heijden AGVD, Mengual L, Lozano JJ, Ingelmo-Torres M, Ribal MJ, Fernández PL, et al. A five-gene expression signature to predict progression in T1G3 bladder cancer. *European Journal of Cancer*. 2016; 64: 127-136.
- Riester M, Taylor JM, Feifer A, Koppie T, Rosenberg JE, Downey RJ, et al. Combination of a novel gene expression signature with a clinical nomogram improves the prediction of survival in high-risk bladder cancer. *Clinical Cancer Research*. 2012; 18: 1323-1333.
- Irizarry RA, Bolstad BM, Collin F, Cope LM, Hobbs B, Speed TP. Summaries of Affymetrix GeneChip probe level data. *Nucleic acids research*. 2003; 31: e15.
- Mayakonda A, Koeffler HP. Maftools: Efficient analysis, visualization and summarization of MAF files from large-scale cohort based cancer studies. *bioRxiv*. 2016. doi: <http://dx.doi.org/10.1101/052662>.
- Simon R, Lam A, Li MC, Ngan M, Menezes S, Zhao Y. Analysis of gene expression data using BRB-ArrayTools. *Cancer informatics*. 2007; 3: 11-17.
- Meng J, Li P, Zhang Q, Yang Z, Fu S. A four-long non-coding RNA signature in predicting breast cancer survival. *Journal of experimental & clinical cancer research*. 2014; 33: 84.
- Subramanian A, Tamayo P, Mootha VK, Mukherjee S, Ebert BL, Gillette MA, et al. Gene set enrichment analysis: a knowledge-based approach for interpreting genome-wide expression profiles. *Proceedings of the National Academy of Sciences of the United States of America*. 2005; 102: 15545-15550.
- Merico D, Isserlin R, Stueker O, Emili A, Bader GD. Enrichment map: a network-based method for gene-set enrichment visualization and interpretation. *PloS one*. 2010; 5: e13984.
- van Rhijn BW, van Leenders GJ, Ooms BC, Kirkels WJ, Zlotta AR, Boeve ER, et al. The pathologist's mean grade is constant and individualizes the prognostic value of bladder cancer grading. *European urology*. 2010; 57: 1052-1057.
- Sylvester RJ, van der Meijden AP, Oosterlinck W, Witjes JA, Bouffuioux C, Denis L, et al. Predicting recurrence and progression in individual patients with stage Ta T1 bladder cancer using EORTC risk tables: a combined analysis of 2596 patients from seven EORTC trials. *European urology*. 2006; 49: 466-477.
- Kim YS, Hwan JD, Bae S, Bae DH, Shick WA. Identification of differentially expressed genes using an annealing control primer system in stage III serous ovarian carcinoma. *BMC cancer*. 2010; 10: 576.
- Ng HY, Ko JM, Yu VZ, Ip JC, Dai W, Cal S, et al. DESCL, a novel tumor suppressor, sensitizes cells to apoptosis by downregulating the EGFR/AKT pathway in esophageal squamous cell carcinoma. *International journal of cancer*. 2016; 138: 2940-2951.
- Zhang DQ, Zhou CK, Chen SZ, Yang Y, Shi BK. Identification of hub genes and pathways associated with bladder cancer based on co-expression network analysis. *Oncology letters*. 2017; 14: 1115-1122.
- Park BJ, Lee SJ, Kim JI, Lee SJ, Lee CH, Chang SG, et al. Frequent alteration of p63 expression in human primary bladder carcinomas. *Cancer research*. 2000; 60: 3370-3374.
- Voronov E, Shouval DS, Krelin Y, Cagnano E, Benharroch D, Iwakura Y, et al. IL-1 is required for tumor invasiveness and angiogenesis. *Proceedings of the National Academy of Sciences of the United States of America*. 2003; 100: 2645-2650.
- Alfred Witjes J, Lebret T, Comperat EM, Cowan NC, De Santis M, Bruins HM, et al. Updated 2016 EAU Guidelines on Muscle-invasive and Metastatic Bladder Cancer. *European urology*. 2017; 71: 462-475.
- Svatek RS, Shariat SF, Lasky RE, Skinner EC, Novara G, Lerner SP, et al. The effectiveness of off-protocol adjuvant chemotherapy for patients with urothelial carcinoma of the urinary bladder. *Clinical Cancer Research*. 2010; 16: 4461-4467.
- Sobin LH, Hermanek P, Hutter RV. TNM classification of malignant tumors. A comparison between the new (1987) and the old editions. *Cancer*. 1988; 61: 2310-2314.
- Kang J, D'Andrea AD, Kozono D. A DNA Repair Pathway-Focused Score for Prediction of Outcomes in Ovarian Cancer Treated With Platinum-Based Chemotherapy. *Journal of the National Cancer Institute*. 2012; 104: 670-681.