

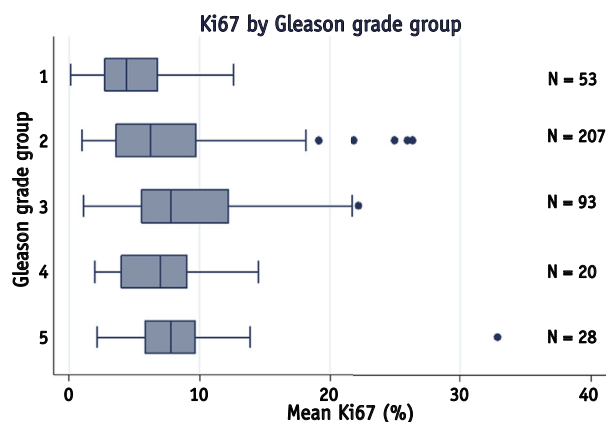
## Errata

**Erratum to: Wilkins AC, Gusterson B, Szigyarto Z, et al. Ki67 Is an Independent Predictor of Recurrence in the Largest Randomized Trial of 3 Radiation Fractionation Schedules in Localized Prostate Cancer. *Int J Radiat Oncol Biol Phys* 2018;101:309-315.**



The authors regret an error in figure 3 “Box and whisker plot showing the relationship between mean Ki67 and Gleason grade group.” An incorrect figure was initially included, which did not show the relationship between mean Ki67 and Gleason grade group, and instead showed the relationship between mean Ki67 and local recurrence according to fractionation schedule.

The correct figure, which does show the relationship between mean Ki67 and Gleason grade group, is shown below. The authors apologize for any inconvenience caused.



<https://doi.org/10.1016/j.ijrobp.2019.01.079>

DOI of original article: <https://doi.org/10.1016/j.ijrobp.2018.01.072>.

**Erratum to: Fung CY, Chen E, Vapiwala N, et al. The American Society for Radiation Oncology 2017 Radiation Oncologist Workforce Study. *Int J Radiat Oncol Biol Phys* 2019;103:547-556.**



In the above-referenced article, the name of the last author was partially incorrect. The correct name is “Trevor J. Royce”. The middle initial “J” was omitted.

<https://doi.org/10.1016/j.ijrobp.2019.02.035>

DOI of original article: <https://doi.org/10.1016/j.ijrobp.2018.10.020>.