

Effects of blood pressure goals on cardiovascular outcomes in hypertensive patients

Zonglei Du¹, Weishi Bian², Shanxia Wu², Bingfeng Gao², Yanfang Sun², Zhenxing Kang², Xianchao Zhang³

¹Department of Cardiovascular Medicine, Zouchen People's Hospital, Zouchen, China

²Department of Cardiovascular Medicine, The Third People's Hospital of Linyi, Linyi, China

³Department of Cardiovascular Medicine, Linyi People's Hospital, Linyi, China

Submitted: 7 October 2018

Accepted: 2 November 2018

Arch Med Sci 2019; 15 (6): 1381–1387

DOI: <https://doi.org/10.5114/aoms.2018.80013>

Copyright © 2018 Termedia & Banach

Corresponding author:

Zonglei Du

Department of

Cardiovascular Medicine

Zouchen People's

Hospital

59 Qianquan Road

273500, Zouchen, China

Phone: +86 537 525 0811

E-mail: dzldoctor123@gmail.com

com

Abstract

Introduction: The aim of the study was to evaluate the effects of blood pressure (BP) goals on cardiovascular outcomes in hypertensive patients.

Material and methods: Primary hypertensive patients were retrospectively enrolled from outpatient clinics. The demographics, comorbidities, laboratory parameters and glomerular filtration rate (GFR) were collected. All participants were followed for 1 year. Cardiovascular outcomes included composite of all-cause mortality, non-fatal myocardial infarction, and non-fatal ischemic stroke/transient ischemic attack. Adverse event was defined as falling down and GFR decrease at follow-up.

Results: A total of 1226 patients were included. Based on therapeutic BP goals, participants were divided into low (< 130/80 mm Hg) and high (< 140/90 mm Hg) therapeutic goal groups and an uncontrolled hypertension (\geq 140/90 mm Hg) group. Compared to the low therapeutic goal group, patients in the uncontrolled group were older and more likely to be smokers, have longer duration of hypertension, diabetes mellitus, lower GFR and higher prevalent ischemic stroke ($p < 0.05$). Patients in the uncontrolled hypertension group had higher incidence of composite endpoints than low and high therapeutic goal groups. Two cases of falling down were observed in the low therapeutic goal group and no significant changes in GFR were observed. With adjustment for confounding factors, the uncontrolled hypertension group had higher risk of composite endpoints compared to low and high therapeutic goal groups, and these benefits were more prominent in the low versus high therapeutic goal group.

Conclusions: In hypertension patients, when compared to uncontrolled hypertension patients, low therapeutic BP goal is associated with better cardiovascular outcomes than high therapeutic BP goal.

Key words: blood pressure, cardiovascular outcomes, therapeutic goal.

Introduction

Hypertension, once defined as systolic and/or diastolic blood pressure (SBP/DBP) \geq 140/90 mm Hg [1, 2], is a major risk factor for cardiovascular disease and all-cause mortality. Prior studies have consistently shown that BP levels were positively associated with cardiovascular risks [3–6]. Furthermore, meta-analysis and randomized controlled trials have also demonstrated that decreasing BP with antihypertensive medications is beneficial for reducing cardiovascular events and all-cause mortality [3, 7–10].

In the last year, the American College of Cardiology and American Heart Association (ACC/AHA) issued a new Hypertension Guideline which recommends that the cutoff value to diagnose hypertension should be with SBP and/or DBP \geq 130/80 mm Hg [11]. Indeed, the SPRINT trial has shown that compared to patients with a therapeutic BP goal of 140/90 mm Hg, patients with a therapeutic BP goal of 120/80 mm Hg had lower incidence of cardiovascular events and all-cause mortality [7, 12], indicating that a lower therapeutic BP goal is better than the traditional BP goal. However, a slightly higher risk of acute kidney injury and falling down was also observed in the low therapeutic BP goal group.

The evidence used in the new ACC/AHA Hypertension Guideline was predominantly derived from Caucasian populations, and whether this recommendation could be applied to Chinese hypertensive patients is unknown. In addition, compared to the Caucasian populations, the Chinese hypertensive patients were more likely to have a lower body weight index and be physically inactive [13–15]. Furthermore, epidemiological studies have shown that Chinese hypertensive patients were more likely to experience ischemic stroke than ischemic heart disease [16, 17]. Therefore, it is necessary to investigate the association of different therapeutic BP goals and cardiovascular outcomes as well as potential adverse events in Chinese hypertensive patients.

In the current study, using a retrospective design, we compared the associations of different therapeutic BP goals and cardiovascular outcomes. Data from our current study can provide foundations for randomized controlled trials aiming to evaluate the optimal therapeutic BP goal for Chinese hypertensive patients in the future.

Material and methods

Study design and participants' enrollment

This was a retrospective observational study and the current study was approved by the Clinical Research Ethic Committee of Linyi People's Hospital. Since this study has a retrospective design, no informed consent was required. All participants were screened and recruited from the outpatient clinic system from January 2016 to January 2017. The inclusion criteria were as follows: age 45–75 years old and patients were followed at an outpatient clinic for at least 1 year. The exclusion criteria were as follows: had acute myocardial infarction or ischemic/hemorrhagic stroke, or bone fracture due to falling down in the past 12 months; had documented cognitive impairment, chronic kidney disease \geq stage 3, secondary hypertension or pregnancy.

Data collection

The demographics such as age, gender and body mass index (BMI) were collected from outpatient electronic health record (EHR). Body mass index was calculated by weight in kilograms divided by height in squared meters. Prior medical histories and comorbidities were also collected from the outpatient EHR. At baseline, fasting blood samples were drawn to evaluate lipid profiles, fasting plasma glucose (FPG), glycated hemoglobin A_{1c} (HbA_{1c}) and serum creatinine level, which was used to calculate glomerular filtration rate (GFR) in accordance with the Modification of Diet in Renal Disease (MDRD) formula [18].

Blood pressure measurements

Blood pressure measurements at the outpatient clinic were conducted based on the JNC7 guideline recommendation [19]. No smoking or caffeine-containing beverage consumption was allowed within 1 h before BP measurements. Patients sat quietly for 10 min with their back supported before BP measurements and arms were placed at heart level. The non-dominant arm was used to measure BP 3 times with a 1-minute interval between each measurement. The physician was out of office during BP measurement. The average value of the last two BP readings was considered as the clinic BP value.

Study endpoints

All participants who had at least 1-year follow-up at an outpatient clinic were included in the analysis. Study endpoints included composite of all-cause mortality, non-fatal myocardial infarction, and non-fatal ischemic stroke/transient ischemic attack (TIA); and adverse event was defined as falling down due to hypotension or orthostatic hypotension. In addition, GFR at follow-up was also compared. All the events were adjudicated by two experienced and independent physicians.

Statistical analysis

Continuous data were presented as mean \pm standard deviation (SD) or median (inter-quartile range – IQR) and were compared by the Student *t*-test when data were normally distributed; otherwise they were compared by the Wilcoxon rank-sum test. Categorical data were presented as number (proportion) and were compared by the χ^2 test or Fisher's exact test as appropriate. The association of different therapeutic BP goals and study endpoints was evaluated by Cox proportional regression analysis. All reported *p*-values were 2-sided, and a *p*-value of $<$ 0.05 was considered statistically significant. All statistical analyses were

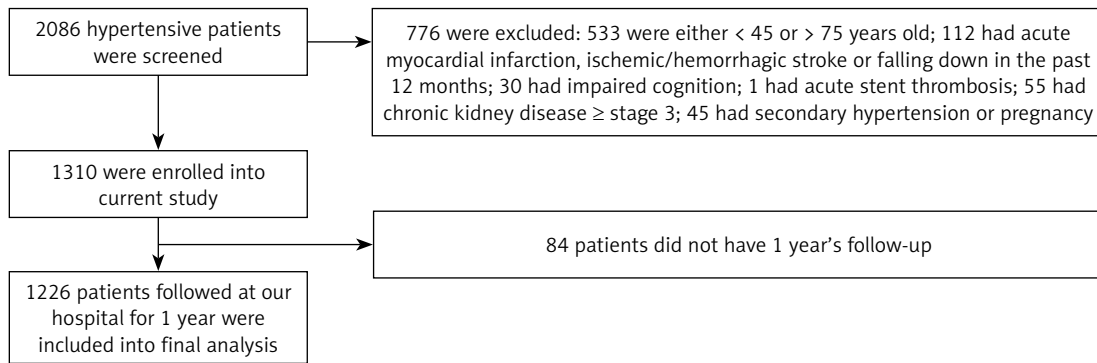


Figure 1. Schematic study

conducted with the SPSS statistical package for Windows version 19.0 (SPSS Inc., Chicago, Illinois).

Results

Participants' enrollment

A total of 2086 hypertensive patients were screened during January of 2016 to January of 2017 and 776 patients were excluded due to existing exclusion criteria, and 1310 patients were enrolled in the current study and 84 patients did not have 1 year's follow-up; therefore, 1226 patients were included in the final analysis (Figure 1). Based on therapeutic BP goal levels, all participants were divided into 3 groups, namely low ($< 130/80$ mm Hg) and high ($< 140/90$ mm Hg) therapeutic BP goal groups and the uncontrolled hypertension ($\geq 140/90$ mm Hg) group.

Comparison of baseline characteristics

As shown in Table I, a total of 366 (29.9%) and 570 (46.5%) patients in our study had achieved SBP/DBP $< 130/80$ mm Hg and SBP/DBP $< 140/90$ mm Hg during 1 year's follow-up, respectively. Compared to patients in the low therapeutic goal group, patients in the uncontrolled hypertension group (SBP/DBP $\geq 140/90$ mm Hg) were older and more likely to be current smokers, have longer duration of hypertension, diabetes mellitus, lower GFR and prevalent ischemic stroke at baseline ($p < 0.05$ for all comparisons), indicating that patients in the uncontrolled hypertension group had more comorbidities. No significant differences between high therapeutic goal and uncontrolled hypertension groups were observed.

Comparison of medications

Medications used at follow-up were compared between groups. As presented in Table II, compared to patients in the low therapeutic goal group, patients with uncontrolled hypertension were more likely to have antiplatelet and statins treatment. In addition, the use of antihypertensive medica-

tions and the mean number of antihypertensive medications were also higher in the uncontrolled hypertension group, which might be due to more comorbidities and more severe hypertension in the uncontrolled hypertension group.

Comparison of study endpoints and adverse events

During 1 year's follow-up, study endpoints and adverse events were compared. As shown in Table III, compared to the low and high therapeutic goal groups, patients in the uncontrolled hypertension group had higher incidence of composite endpoints, which was driven by a higher incidence of ischemic stroke/TIA. In addition, GFR remained lower in the uncontrolled hypertension group compared to the low therapeutic goal group. However, no significant differences were observed when compared to baseline GFR within each individual group. Two cases of falling down were observed in the low therapeutic goal group compared to 1 case in the uncontrolled hypertension group. A slightly lower incidence of study endpoints was observed in the low versus high therapeutic goal group, but no statistical significance was observed.

Cox proportional regression analysis

As presented in Table IV, in the unadjusted model, compared to the low therapeutic goal group (reference group), the hazard ratio for composite endpoints during 1 year's follow-up was 1.16 and 1.37 in the high therapeutic goal group and uncontrolled hypertension group. With stepwise adjustment for potential confounding factors, the uncontrolled hypertension group still had nearly 12% higher risk of composite endpoints, with a 95% confidence interval of 4–21%. In addition, compared to the high therapeutic goal group, patients in the uncontrolled hypertension group also had a 6% higher risk of experiencing composite endpoints, with a 95% confidence interval of 2–17%. Compared to the high therapeutic goal group, although patients in the low therapeutic

Table I. Comparison of baseline characteristics

Variables	< 130/80 mm Hg (n = 366)	< 140/90 mm Hg (n = 570)	≥ 140/90 mm Hg (n = 290)
Age [years]	56.3 ±9.2	59.2 ±10.4	62.5 ±11.2*
Male, n (%)	195 (53.3)	308 (54)	157 (54.1)
Body mass index [kg/m ²]	24.4 ±4.9	25.6 ±4.5	25.0 ±4.2
Systolic blood pressure [mm Hg]	148 ±7	152 ±6	158 ±13*
Diastolic blood pressure [mm Hg]	84 ±10	91 ±12	99 ±11*
Current smokers, n (%)	106 (29)	174 (30.5)	102 (35.2)*
Dyslipidemia, n (%)	124 (33.9)	196 (34.4)	100 (34.5)
Diabetes mellitus, n (%)	130 (35.6)	208 (36.5)	117 (40.3)*
Hypertension duration [years]	8.4 ±3.0	8.9 ±2.9	9.7 ±3.4*
Total cholesterol [mmol/l]	5.0 ±0.7	5.1 ±0.4	5.1 ±0.6
Triglyceride [mmol/l] [#]	1.08 (0.75–2.11)	1.12 (0.94–2.16)	1.1 (0.83–2.19)
Fasting plasma glucose [mmol/l]	5.8 ±0.8	5.9 ±1.0	5.8 ±0.9
Glycated hemoglobin A _{1c} (%)	6.3 ±1.0	6.2 ±1.1	6.1 ±1.2
Creatinine [μmol/l]	70.3 ±26.7	72.5 ±23.6	74.8 ±27.7
Glomerular filtration rate [ml/min/1.73 m ²]	79.2 ±10.7	76.1 ±12.3	74.3 ±10.8*
Ischemic stroke, n (%)	93 (26.2)	157 (27.5)	90 (31.0)*
Coronary artery disease, n (%)	40 (10.9)	67 (11.8)	31 (10.7)
Chronic heart failure, n (%)	25 (6.8)	40 (7.0)	21 (7.2)
Peripheral vascular disease, n (%)	32 (8.7)	51 (8.9)	27 (9.3)

[#]Median and interquartile; *p < 0.05 vs. < 130/80 mm Hg group.

Table II. Use of medications at follow-up

Medications	< 130/80 mm Hg (n = 366)	< 140/90 mm Hg (n = 570)	≥ 140/90 mm Hg (n = 290)
Antiplatelet, n (%)	185 (50.5)	293 (51.4)	166 (57.2)*
Statins, n (%)	168 (45.9)	285 (50)	163 (56.2)*
ACEI/ARB, n (%)	282 (77)	456 (80)	243 (83.8)*
β-Blocker, n (%)	103 (28.1)	166 (29.1)	120 (41.4)*
Calcium channel blocker, n (%)	115 (31.4)	160 (28.1)	112 (38.6)*
Diuretic, n (%)	70 (19.1)	105 (18.4)	95 (32.8)*
Number of anti-hypertensive drugs	2.3 ±0.6	2.5 ±0.5	2.9 ±0.7*
Oral hypoglycemic drugs, n (%)	96 (26.2)	178 (31.2)	89 (30.7)
Insulin, n (%)	23 (6.3)	30 (5.3)	20 (6.9)
Blood pressure at follow-up [mm Hg]:			
Systolic blood pressure	122 ±6	131 ±8	150 ±7*
Diastolic blood pressure	70 ±8	82 ±6	95 ±5*

*P < 0.05 vs. < 130/80 mm Hg group; ACEI/ARB – angiotensin converting enzyme inhibitor/angiotensin receptor blocker.

Table III. Comparison of study endpoints and adverse events

Study endpoints	< 130/80 mm Hg (n = 366)	< 140/90 mm Hg (n = 570)	≥ 140/90 mm Hg (n = 290)
All-cause mortality, n (%)	0	0	1 (0.3)
Non-fatal MI, n (%)	2 (0.5)	8 (1.4)	6 (2.1)
Ischemic stroke/TIA, n (%)	5 (1.4)	12 (2.1)	11 (3.8)**
Composite, n (%)	7 (1.9)	20 (3.5)	18 (6.2)**
Falling down, n (%)	2 (0.5)	0	1 (0.3)
GFR [ml/min/1.73 m ²]	78.0 ±9.6	75.4 ±11.2	73.4 ±10.1*

P* < 0.01 vs. < 130/80 mm Hg group; *p* < 0.05 vs. < 140/90 mm Hg group; GFR – glomerular filtration rate.

Table IV. Cox proportional regression analysis

Model	Unadjusted	Model 1	Model 2	Model 3
Hazard ratio (95% confidence interval):				
< 130/80 mm Hg (reference)				
< 140/90 mm Hg	1.16 (1.04–1.22)	1.04 (1.01–1.17)	1.00 (0.92–1.08)	NS
≥ 140/90 mm Hg	1.37 (1.19–1.55)	1.28 (1.13–1.40)	1.19 (1.08–1.32)	1.12 (1.04–1.21)
Hazard ratio (95% confidence interval):				
< 140/90 mm Hg (reference)				
≥ 140/90 mm Hg	1.29 (1.19–1.40)	1.21 (1.16–1.31)	1.15 (1.09–1.24)	1.06 (1.02–1.17)

NS – non-significant; Model 1 adjusted for age and male gender; Model 2 additionally adjusted for smoking status, body mass index, hypertension duration, diabetes mellitus, GFR at baseline, ischemic stroke and coronary artery disease; Model 3 additionally adjusted for blood pressure at follow-up, anti-platelets, statins, anti-hypertensive drugs.

group had low risk of composite endpoints, the risk was attenuated into statistical insignificance after adjustment for confounding factors.

Discussion

Hypertension is an important public health problem to China due to the high prevalence and incidence [20, 21]. In addition, hypertension causes millions of strokes and heart attack in China annually [22, 23]. However, the optimal therapeutic BP goal for Chinese hypertensive patients is unclear and without solid clinical evidence. After the new ACC/AHA Hypertension Guideline was released, many researchers around the world were eager to conduct studies to evaluate how the new hypertension guideline would influence hypertensive patients in their own countries.

Using a retrospective design, we compared the differences of cardiovascular outcomes and adverse events in the Chinese hypertensive patients. Our current study for the first time showed that: (1) although some differences in study endpoints were observed between the low (SBP/DBP < 130/80 mm Hg) and high (SBP/DBP < 140/90 mm Hg) therapeutic BP goal groups, the differences did not achieve statistical significance; (2) compared to the uncontrolled hypertension group, patients in

the low and high therapeutic BP goal groups had lower unadjusted and adjusted cardiovascular risk without increased risk of adverse events; and these benefits were more prominent in the low versus high therapeutic BP goal group.

Hypertension is a well-known risk factor for a variety of cardiovascular and renal diseases. Post-hoc analysis and meta-analysis have shown that therapeutic BP level was linearly correlated with cardiovascular events [3, 24, 25], suggesting that achieving a lower therapeutic BP goal might be beneficial for some hypertensive patients. However, due to the design-related limitations of prior studies, the therapeutic BP goal remained as SBP/DBP of 140/90 mm Hg for general hypertensive populations. However, after publication of the SPRINT clinical trial which demonstrated that a lower therapeutic BP goal was better than the traditional therapeutic BP goal in reducing cardiovascular events, aggregated data from prior published clinical trials and meta-analyses also showed that a lower BP therapeutic goal would be better to prevent cardiovascular and renal diseases [5, 26–28]. However, most of these data were derived from Caucasian populations, and whether the recommendation could be extrapolated to Chinese hypertensive patients is unknown.

Our current study showed that after 1 year's follow-up, patients with a low therapeutic BP goal had significantly fewer cardiovascular events compared to the uncontrolled hypertension group even after adjusting for demographics and comorbidities, demonstrating that BP per se was an independent risk factor for cardiovascular events, which was consistent with prior reports [29–32]. Furthermore, it was found that patients in the low therapeutic BP goal group also had lower risk of cardiovascular events than patients in the high therapeutic BP goal group, although without statistical significance, which might be due to the relatively small sample size or short-term follow-up. However, from a clinical perspective, these findings still supported the notion that a lower therapeutic BP goal might be better for Chinese hypertensive patients. Notably, as shown in Table III, the significant differences in composite endpoints were driven by the difference in ischemic stroke/TIA, once again indicating that hypertension has a disproportional burden on the cerebrovascular system in Chinese hypertensive patients. Furthermore, in our current study, we did not observe any significantly increased risk of adverse events including falling down or a significant change of renal function as reflected by GFR.

Importantly, patients in the high therapeutic BP goal group also had fewer cardiovascular events than the uncontrolled hypertension group even after adjusting for demographics and comorbid conditions. Of note, as presented in Table IV, these benefits were found to be smaller than those in the low therapeutic BP goal group. From a clinical perspective, it was clinically relevant because lowering BP can absolutely reduce the risk of cardiovascular events.

The clinical implications of our current study included the following: 1) it seems that the lower therapeutic BP goal was also reasonable for the Chinese hypertensive patients and clinicians may try to lower the BP level for their patients while closely monitoring potential side effects; 2) future studies of Chinese hypertensive patients should be conducted to corroborate our current findings; 3) since the current study was conducted on Chinese hypertensive patients, we were uncertain whether our findings could be extrapolated to other population groups. However, findings from our current study provide clues for future studies.

There were some limitations of the study that need to be addressed. First, due to the observational design, no causal relationship could be drawn from our study. Unmeasured and undetected covariates might exist. The study was conducted in Chinese hypertensive patients and therefore our findings could not be extrapolated to other ethnic groups. However, data from this study should provide evidence for a future randomized controlled

trial aiming to evaluate the optimal therapeutic BP goal for Chinese hypertensive patients. Last but not least, due to the relatively small sample size and short-term follow-up, we did not observe statistically significant differences in composite endpoints between low and high therapeutic BP goal groups, which deserve further investigation.

In conclusion, this study shows that in Chinese hypertensive patients, compared to uncontrolled hypertension patients, a low therapeutic BP goal is better for reducing cardiovascular events than a high BP therapeutic goal, without any significantly increased risk of adverse events.

Acknowledgments

We greatly appreciate Dr. Ping Zhang's assistance with statistical analysis.

Conflict of interest

The authors declare no conflict of interest.

References

1. James PA, Oparil S, Carter BL, et al. 2014 evidence-based guideline for the management of high blood pressure in adults: report from the panel members appointed to the Eighth Joint National Committee (JNC 8). *JAMA* 2014; 311: 507-20.
2. Taylor J. 2013 ESH/ESC guidelines for the management of arterial hypertension. *Eur Heart J* 2013; 34: 2108-9.
3. Thomopoulos C, Parati G, Zanchetti A. Effects of blood pressure lowering on outcome incidence in hypertension: 4. Effects of various classes of antihypertensive drugs--overview and meta-analyses. *J Hypertens* 2015; 33: 195-211.
4. Xie X, Atkins E, Lv J, et al. Effects of intensive blood pressure lowering on cardiovascular and renal outcomes: updated systematic review and meta-analysis. *Lancet* 2016; 387: 435-43.
5. Sundström J, Arima H, Jackson R, et al. Effects of blood pressure reduction in mild hypertension: a systematic review and meta-analysis. *Ann Intern Med* 2015; 162: 184-91.
6. Rajzer M, Wojciechowska W, Kameczura T, et al. The effect of antihypertensive treatment on arterial stiffness and serum concentration of selected matrix metalloproteinases. *Arch Med Sci* 2017; 13: 760-70.
7. Wright JT, Whelton PK, Reboussin DM. A randomized trial of intensive versus standard blood-pressure control. *N Engl J Med* 2016; 374: 2294.
8. Drawz PE, Pajewski NM, Bates JT, et al. Effect of intensive versus standard clinic-based hypertension management on ambulatory blood pressure: results from the SPRINT (Systolic Blood Pressure Intervention Trial) Ambulatory blood pressure study. *Hypertension* 2017; 69: 42-50.
9. Rochlani Y, Khan MH, Banach M, Aronow WS. Are two drugs better than one? A review of combination therapies for hypertension. *Expert Opin Pharmacother* 2017; 18: 377-86.
10. Ghomari-Boukhatem H, Bouchouicha A, Mekki K, Cheni K, Belhadj M, Bouchenak M. Blood pressure, dyslipidemia and inflammatory factors are related to body

- mass index in scholar adolescents. *Arch Med Sci* 2017; 13: 46-52.
11. Whelton PK, Carey RM, Aronow WS, et al. 2017 ACC/AHA/AAPA/ABC/ACPM/AGS/APhA/ASH/ASPC/NMA/PCNA Guideline for the Prevention, Detection, Evaluation, and Management of High Blood Pressure in Adults: Executive Summary: A Report of the American College of Cardiology/American Heart Association Task Force on Clinical Practice Guidelines. *Hypertension* 2018; 71: 1269-324.
 12. Siński M, Lewandowski J, Dobosiewicz A, Przybylski J, Abramczyk P, Gaciong Z. The effect of hyperoxia on central blood pressure in healthy subjects. *Arch Med Sci* 2016; 12: 992-9.
 13. Yang G, Wang Y, Zeng Y, et al. Rapid health transition in China, 1990-2010: findings from the Global Burden of Disease Study 2010. *Lancet* 2013; 381: 1987-2015.
 14. Wei FF, Li Y, Zhang L, et al. Association of target organ damage with 24-hour systolic and diastolic blood pressure levels and hypertension subtypes in untreated Chinese. *Hypertension* 2014; 63: 222-8.
 15. Cai A, Liu C, Zhou D, et al. Ambulatory blood pressure is superior to clinic blood pressure in relation to ischemic stroke in both diabetic and nondiabetic patients. *Blood Press Monit* 2017; 22: 314-21.
 16. Shi X, Yang J, Wang L, et al. Prospective study of serum uric acid levels and stroke in a Chinese hypertensive cohort. *Clin Exp Hypertens* 2017; 39: 527-31.
 17. Chen Z, Wang F, Zheng Y, Zeng Q, Liu H. H-type hypertension is an important risk factor of carotid atherosclerotic plaques. *Clin Exp Hypertens* 2016; 38: 424-8.
 18. K/DOQI clinical practice guidelines for chronic kidney disease: evaluation, classification, and stratification. *Am J Kidney Dis* 2002; 39 (2 Suppl 1): S1-266.
 19. Chobanian AV, Bakris GL, Black HR, et al. The Seventh Report of the Joint National Committee on prevention, detection, evaluation, and treatment of high blood pressure: the JNC 7 report. *JAMA* 2003; 289: 2560-72.
 20. Lu J, Lu Y, Wang X, et al. Prevalence, awareness, treatment, and control of hypertension in China: data from 1.7 million adults in a population-based screening study (China PEACE Million Persons Project). *Lancet* 2017; 390: 2549-58.
 21. Wang Z, Chen Z, Zhang L, et al. Status of hypertension in China: results from the China Hypertension Survey, 2012-2015. *Circulation* 2018; 137: 2344-56.
 22. Su L, Sun L, Xu L. Review on the prevalence, risk factors and disease management of hypertension among floating population in China during 1990-2016. *Glob Health Res Policy* 2018; 3: 24.
 23. Wang YT, Adi D, Yu ZX, et al. The burden and correlates of hypertension among Chinese rural population in Han, Uygur, and Kazak: a cross-sectional study. *J Am Soc Hypertens* 2017; 11: 737-45.e3.
 24. Lv J, Neal B, Ehteshami P, et al. Effects of intensive blood pressure lowering on cardiovascular and renal outcomes: a systematic review and meta-analysis. *PLoS Med* 2012; 9: e1001293.
 25. Thomopoulos C, Parati G, Zanchetti A. Effects of blood pressure lowering on outcome incidence in hypertension: 3. Effects in patients at different levels of cardiovascular risk; overview and meta-analyses of randomized trials. *J Hypertens* 2014; 32: 2305-14.
 26. Zanchetti A, Thomopoulos C, Parati G. Randomized controlled trials of blood pressure lowering in hypertension: a critical reappraisal. *Circ Res* 2015; 116: 1058-73.
 27. Ettehad D, Emdin CA, Kiran A, et al. Blood pressure lowering for prevention of cardiovascular disease and death: a systematic review and meta-analysis. *Lancet* 2016; 387: 957-67.
 28. Banach M, Aronow WS, Serban MC, Rysz J, Voroneanu L, Covic A. Lipids, blood pressure and kidney update 2015. *Lipids Health Dis* 2015; 14: 167.
 29. Staessen JA, Gasowski J, Wang JG, et al. Risks of untreated and treated isolated systolic hypertension in the elderly: meta-analysis of outcome trials. *Lancet* 2000; 355: 865-72.
 30. Clement DL, De Buyzere ML, De Bacquer DA, et al. Prognostic value of ambulatory blood-pressure recordings in patients with treated hypertension. *N Engl J Med* 2003; 348: 2407-15.
 31. Howard G, Banach M, Cushman M, et al. Is blood pressure control for stroke prevention the correct goal? The lost opportunity of preventing hypertension. *Stroke* 2015; 46: 1595-600.
 32. Zanchetti A, Liu L, Mancia G, et al. Blood pressure and LDL-cholesterol targets for prevention of recurrent strokes and cognitive decline in the hypertensive patient: design of the European Society of Hypertension-Chinese Hypertension League Stroke in Hypertension Optimal Treatment randomized trial. *J Hypertens* 2014; 32: 1888-97.