



Published in final edited form as:

Placenta. 2019 October ; 86: 52–53. doi:10.1016/j.placenta.2019.06.388.

Corrigendum to ‘Maternal vascular malperfusion of the placental bed associated with hypertensive disorders in the Boston Birth Cohort’ [Placenta 52 (2017) 106–113]

Blandine Bustamante Helfrich^{a,b}, Nymisha Chilukuri^{a,c}, Huan He^{a,d}, Sandra R. Cerda^e, Xiumei Hong^a, Guoying Wang^a, Colleen Pearson^f, Irina Burd^g, Xiaobin Wang^{a,c,*}

^aCenter on the Early Life Origins of Disease, Department of Population, Family and Reproductive Health, Johns Hopkins Bloomberg School of Public Health, Baltimore, MD, United States

^bDepartment of Clinical and Applied Science Education (Pathology), University of the Incarnate Word School of Osteopathic Medicine, San Antonio, TX, United States

^cDepartment of Pediatrics, Johns Hopkins School of Medicine, Baltimore, MD, United States

^dCenter for Health Policy and Governance, School of Public Administration, Southwestern University of Finance and Economics, Chengdu, Sichuan, China

^eDepartment of Pathology and Laboratory Medicine, Boston Medical Center, Boston, MA, United States

^fDepartment of Pediatrics, Boston University School of Medicine and Boston Medical Center, Boston, MA, United States

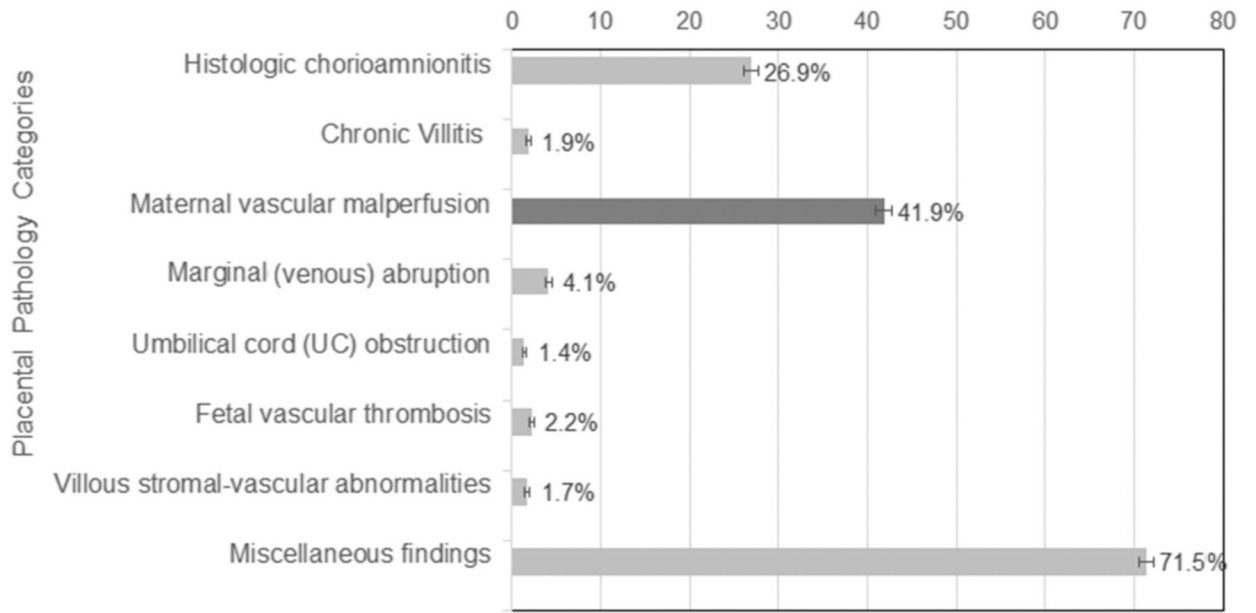
^gIntegrated Research Center for Fetal Medicine, Department of Obstetrics and Gynecology, Johns Hopkins School of Medicine, Baltimore, MD, United States

The authors regret that there was a data coding error in the placental dataset, which affected Figures 1 and 2 in the above publication. Below are corrected Figs. 1 and 2 using the cleaned dataset.

The authors would like to apologise for any inconvenience caused.

*Corresponding author. Johns Hopkins Bloomberg School of Public Health, 615 N. Wolfe Street, E4132, Baltimore, MD, 21205–2179, United States. xwang82@jhu.edu (X. Wang).

Percentages of Placental Pathology Categories out of the Study Sample



N=3074

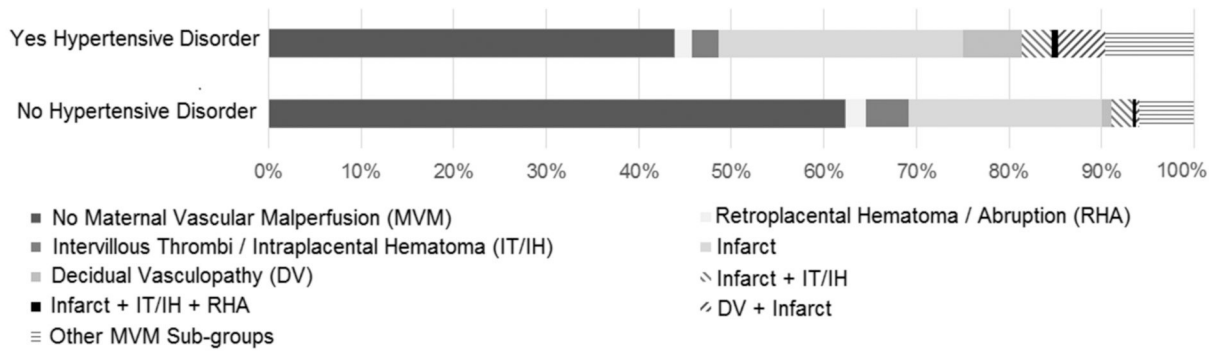
Author Manuscript

Author Manuscript

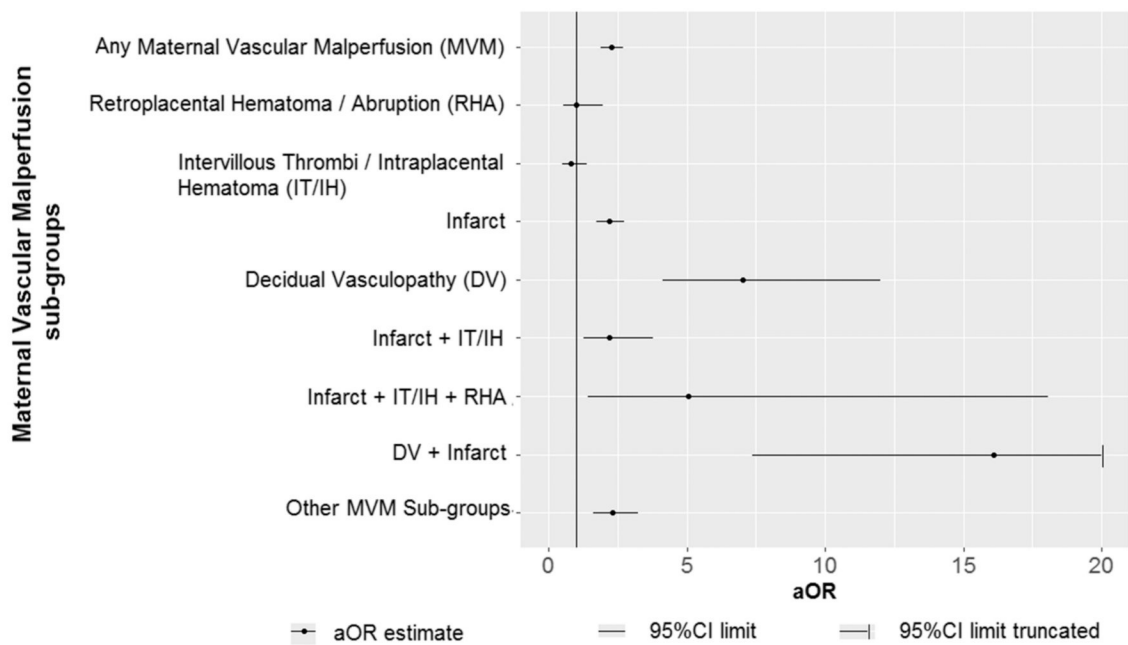
Author Manuscript

Author Manuscript

(a) Percentages of Maternal Vascular Malperfusion Sub-groups among Women with and without Hypertensive Disorder



(b). Adjusted Odds Ratios of Maternal Vascular Malperfusion Sub-groups among Women with Hypertensive Disorder compared to Women without Hypertensive Disorder



Abbreviations: MVM=maternal vascular malperfusion; RHA= retroplacental hematoma/abruption; IT/IH=intervillous thrombus/intraplental hematoma; DV = decidual vasculopathy