



Brf1 loss and not overexpression disrupts tissues homeostasis in the intestine, liver and pancreas

Dritan Liko¹ · Louise Mitchell¹ · Kirsteen J. Campbell¹ · Rachel A. Ridgway¹ · Carolyn Jones² · Kate Dudek² · Ayala King¹ · Sheila Bryson¹ · David Stevenson¹ · Karen Blyth^{1,3} · Douglas Strathdee¹ · Jennifer P. Morton^{1,3} · Thomas G. Bird¹ · John R. P. Knight¹ · Anne E. Willis² · Owen J. Sansom^{1,3}

Received: 17 April 2018 / Revised: 18 January 2019 / Accepted: 13 February 2019 / Published online: 11 March 2019
© The Author(s) 2019, corrected publication 2024. This article is published with open access

Abstract

RNA polymerase III (Pol-III) transcribes tRNAs and other small RNAs essential for protein synthesis and cell growth. Pol-III is deregulated during carcinogenesis; however, its role in vivo has not been studied. To address this issue, we manipulated levels of Brf1, a Pol-III transcription factor that is essential for recruitment of Pol-III holoenzyme at tRNA genes in vivo. Knockout of *Brf1* led to embryonic lethality at blastocyst stage. In contrast, heterozygous *Brf1* mice were viable, fertile and of a normal size. Conditional deletion of *Brf1* in gastrointestinal epithelial tissues, intestine, liver and pancreas, was incompatible with organ homeostasis. Deletion of *Brf1* in adult intestine and liver induced apoptosis. However, *Brf1* heterozygosity neither had gross effects in these epithelia nor did it modify tumorigenesis in the intestine or pancreas. Overexpression of BRF1 rescued the phenotypes of *Brf1* deletion in intestine and liver but was unable to initiate tumorigenesis. Thus, Brf1 and Pol-III activity are absolutely essential for normal homeostasis during development and in adult epithelia. However, Brf1 overexpression or heterozygosity are unable to modify tumorigenesis, suggesting a permissive, but not driving role for Brf1 in the development of epithelial cancers of the pancreas and gut.

These authors contributed equally: Dritan Liko, Louise Mitchell

Edited by T. Mak

Supplementary information The online version of this article (<https://doi.org/10.1038/s41418-019-0316-7>) contains supplementary material, which is available to authorized users.

✉ John R. P. Knight
j.knight@beatson.gla.ac.uk

✉ Owen J. Sansom
o.sansom@beatson.gla.ac.uk

¹ CRUK Beatson Institute, Garscube Estate, Switchback Road, Glasgow G61 1BD, UK

² MRC Toxicology Unit, Hodgkin Building Lancaster Road, Leicester LE1 9HN, UK

³ Institute of Cancer Sciences, University of Glasgow, Glasgow G61 1BD, UK

Introduction

RNA polymerase III (Pol-III) transcribes tRNAs and other short non-coding RNAs that are important in protein production. Pol-III is the largest of the RNA polymerases containing 17 subunits, all necessary for transcription and cell viability [1–4]. The recently solved structure of initiating Pol-III reveals its similarity to Pol-II, and demonstrates the multitude of interactions required for transcription initiation [5, 6]. Pol-III holoenzyme is directed to the majority of its target genes via two Pol-III-associated transcription factor complexes, TFIIB and TFIIC [7, 8]. TFIIC recognises sequences in the body of Pol-III transcribed genes and recruits TFIIB [4, 8], which in turn recruits Pol-III in order to commence transcription [9–12]. Recruitment of TFIIB is the rate-limiting step in Pol-III-dependent transcription [9]. TFIIB is composed of three proteins BDP1, TBP and BRF1. While TBP is shared between all three polymerases, BDP1 and BRF1 are exclusively utilized by Pol-III [8]. The BRF1 homologue BRF2 forms a distinct complex with BDP1 and TBP to promote transcription of type III Pol-III targets

[13, 14]. The BDP1/TBP/BRF1 complex is required for type I and II target genes, which accounts for the majority of Pol-III transcription. Growth related kinases, oncoproteins and tumor suppressors regulate Pol-III transcription, assuring appropriate levels of Pol-III transcripts [15, 16]. The majority of these signals are channelled through BRF1, making it a signal hub at tRNA genes [17–25].

Pol-III transcription is vital for cellular maintenance and important for growth and proliferation. For example, Pol-III transcription is upregulated during cardiomyocyte proliferation and drops during cell differentiation [26, 27]. Pol-III transcription is essential in organismal homeostasis and development. In zebrafish, a 60% reduction in Pol-III activity had a profound effect during larvae development, especially in the intestine and exocrine pancreas [28]. Moreover, deletion of *Brfl* in *Drosophila* reduced pupa size and gave rise to smaller adult flies [29, 30].

In mice, deletion of selenocysteine-tRNA causes a pre-implantation defect [31]. Furthermore homozygous deletion of *La* protein, a known positive regulator of Pol-III transcription, blocks embryo development pre-implantation [32, 33]. However, *La* proteins affect other pathways besides Pol-III transcription [34]. During mouse embryo development the pre-implantation stage is characterised by a burst of transcription and translation that may be dependent on Pol-III activity [35, 36].

Pol-III levels positively correlate with cellular transformation [37–39] and subunits of Pol-III are known to be overexpressed in tumours [16, 22, 40]. Data also suggest that cancer cell lines regulate tRNA availability in order to support cell growth and proliferation [40]. For example, tRNA^{iMET}, the initiator tRNA, is overexpressed drives cancer progression [40, 41]. Since Brf1 is essential for recruitment of Pol-III holoenzyme at tRNA genes it is unsurprising that knockdown of BRF1 protects against transformation in transformed cell lines [42]. Moreover, BRF1 protein may serve as a biomarker in hepatocellular carcinoma where levels of BRF1 were higher and correlated with poor survival [43]. Importantly, elevated levels of tRNA^{iMET} drive tumor cell migration without affecting proliferation [44, 45]. Taken together these data suggest that the link between Pol-III function and tumorigenesis is not necessarily direct and requires further investigation.

To address this we modulated Brf1 levels in mice finding that genetic ablation of *Brfl* stops embryonic development and is incompatible with adult organ homeostasis. Adult epithelial cells lacking Brf1 show a reduction in tRNAs and polysomes, followed by p53 induction and apoptosis. In contrast, heterozygous loss or overexpression of *Brfl* does not alter homeostasis or tumorigenesis. Taken together these studies suggest a crucial function for Pol-III activity in

both normal and cancer cells, but does not limit tumour initiation in the intestine and pancreas.

Results

BRF1 deletion is embryonically lethal

To assess the effect of *Brfl* deletion in mice exon 3 was flanked by two LoxP sites creating a conditional *Brfl* allele (Fig. 1a and S Fig. 1). We generated *Brfl* heterozygous animals (*Brfl*^{+/-}) by crossing mice containing the conditional *Brfl* allele (*Brfl*^{fl/+}) to deleter-Cre mice (S Fig. 2A) [46]. *Brfl*^{+/-} mice, heterozygous for Brf1, were comparable to wild-type controls in terms of body weight and other visible phenotypes (S Fig. 2B). No *Brfl*^{-/-} mice were obtained upon inter-breeding of *Brfl*^{+/-} mice, suggesting that *Brfl* deletion is embryonically lethal (Fig. 1b). Furthermore, the ratio of heterozygous to wild-type mice was significantly skewed from an expected Mendelian ratio of 1:2:1 (Chi-square test, $p < 1 \times 10^{-4}$ for mice at 4 weeks), suggesting an effect of Brf1 heterozygosity during development.

BRF1 is essential for blastocyst formation

Embryos undergo three rounds of cell division to reach the “8-cell” stage, then progresses to morulae and undergo further division and differentiation to give rise to blastocysts that implants into the uterine wall. During implantation a dramatic increase in growth and energy usage is observed [47]. Harvesting embryos at either 3.5 days post coitus (dpc) or 13.5dpc revealed the presence of *Brfl*^{-/-} embryos only at 3.5dpc, suggesting that *Brfl* is essential for embryo development after 3.5dpc (Fig. 1b). At 3.5dpc, >90% of *Brfl*^{+/+} mouse embryos were at the blastocyst stage, compared to only 70% of *Brfl*^{+/-} embryos and none of the *Brfl*^{-/-} embryos (Fig. 1c). These results suggest an essential role for *Brfl* during blastocyst formation at 3.5dpc. It is worth noting that *Brfl* heterozygosity may repress the passage from morulae to blastocyst ($p < 1 \times 10^{-4}$, $n = 11$), in line with reduced Brf1 perturbing early embryonic development.

To distinguish if loss of *Brfl* causes a delay or a complete block of the passage from morulae to blastocyst we isolated 3.5dpc embryos from *Brfl*^{+/-} inter-crosses and cultured them in vitro. After 5 days in culture a considerable number of embryos hatched and colonised in vitro, mimicking uterine implantation (Fig. 1d). No *Brfl*^{-/-} cultured embryos advanced to blastocyst stage, whereas all *Brfl*^{+/+} embryos hatched at 2 or 3 days after plating (5.5dpc and 6.5dpc). A number of *Brfl*^{+/-} embryos hatched at later

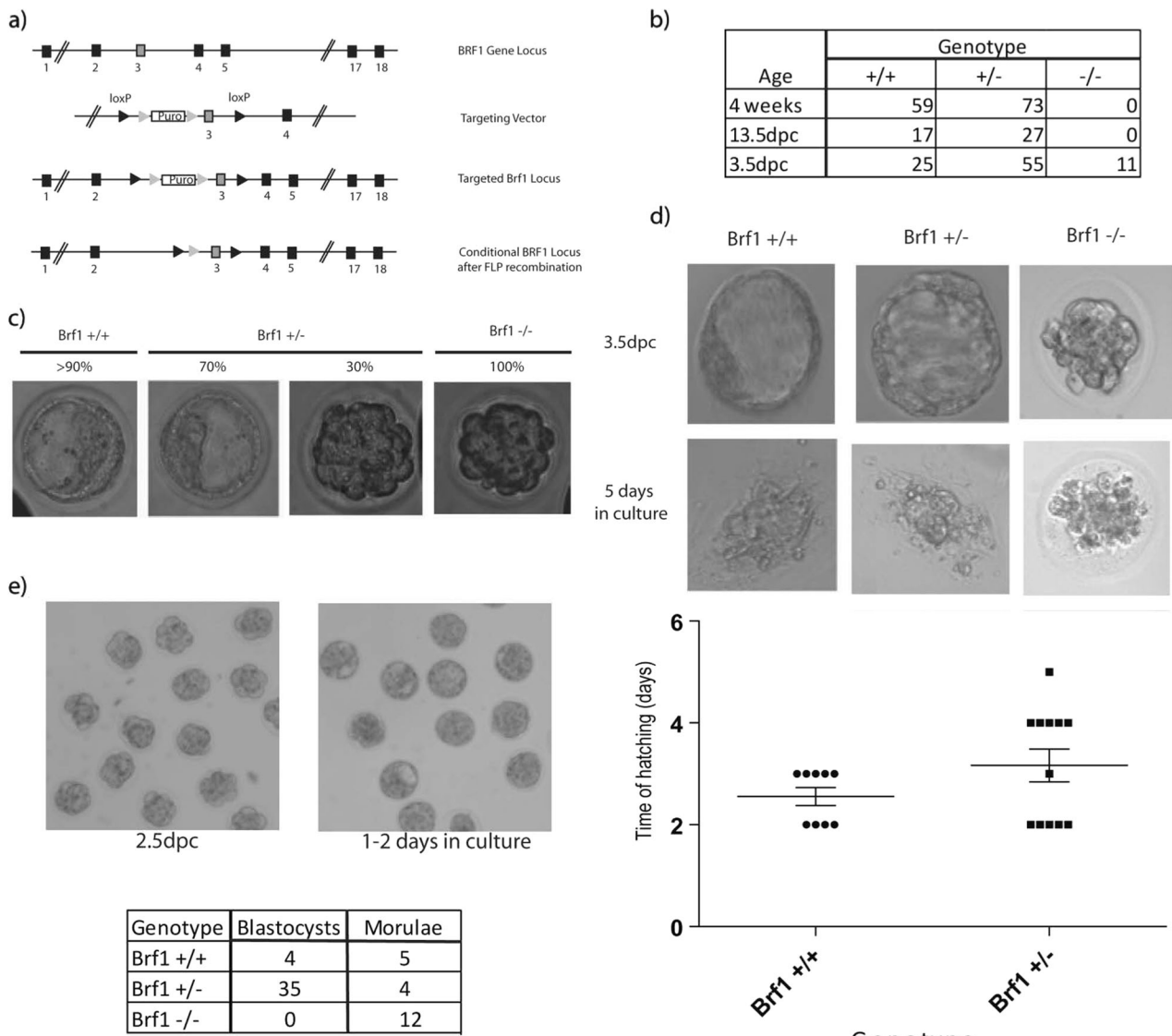


Fig. 1 Brf1 deletion causes a pre-implantation defect. **a** Strategy used to generate the *Brf1^{lox}* allele. Grey arrowheads are *Flp* sites used to excise the puro cassette; black arrowheads are *loxP* sites inserted flanking exon 3 of the *Brf1* locus. **b** Table of mice and embryos generated after crossing *Brf1^{+/-}* mice (dpc, days post coitus). **c** Morphology of 3.5dpc embryos captured with a light microscope. Genotypes are as shown. Percentages depict number of embryos at the blastocyst stage, characterised by vacuole like presence, or the morulae

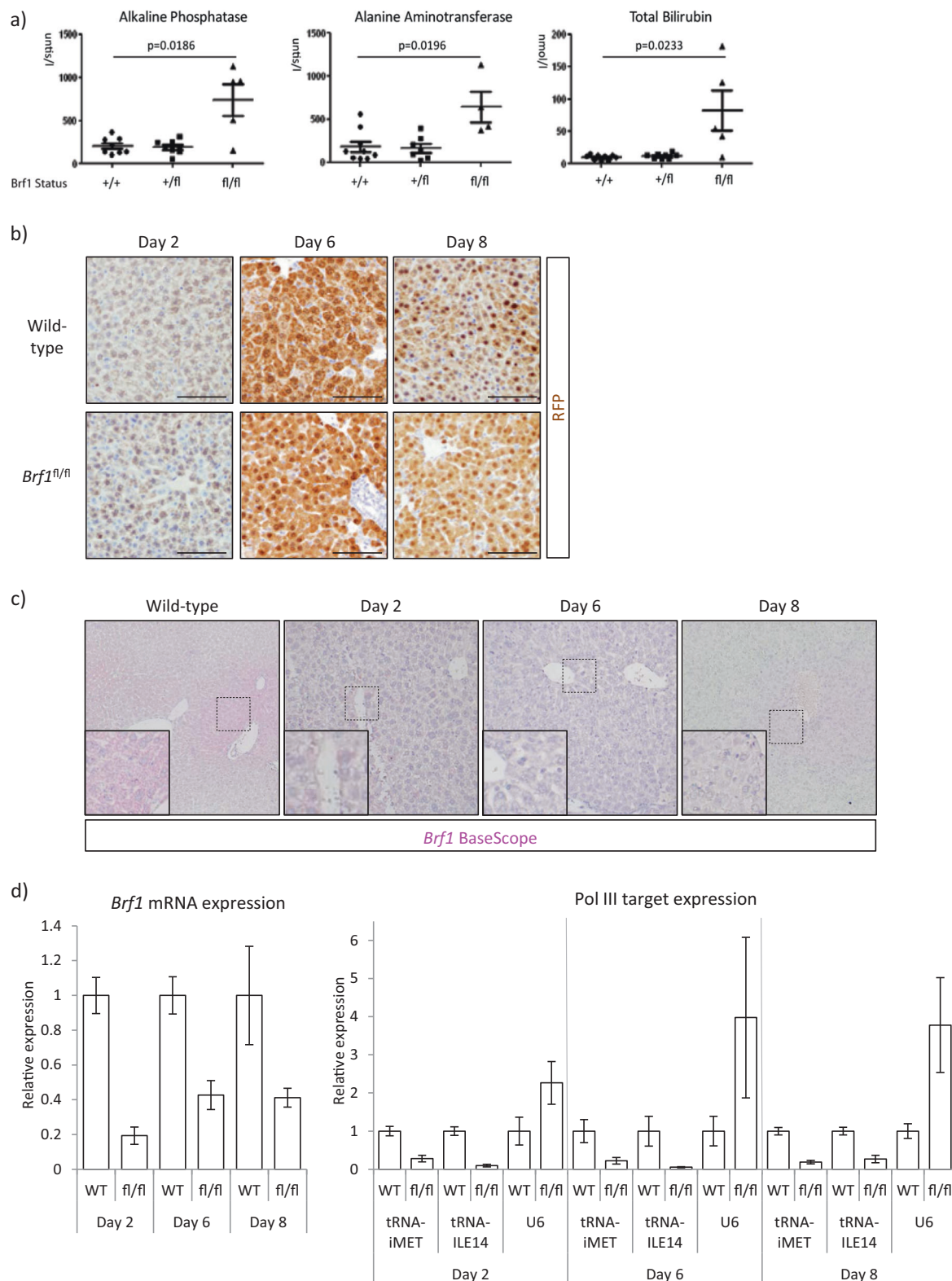
stage. **d** Top panels show pictures of embryos at 3.5dpc when growth in vitro commenced and after 5 days in culture. *Brf1^{+/+}* and *Brf1^{+/-}* embryos shown after 5 days have colonised the plate. Bottom panel shows graphical representation of the time embryos hatch and rupture the zona pellucida for *Brf1^{+/+}* ($n = 9$) and *Brf1^{+/-}* ($n = 12$) embryos. **e** Top panels show 2.5dpc embryos in vitro at the start of culture and after 2 days in culture. The table shows the genotypes of individual embryos harvested after 2 days in culture

time points, underscoring the role of Brf1 during embryo development (Fig. 1d).

Eight-cell embryos were collected at 2.5dpc and cultured for 2 days to monitor progression to blastocyst. While wild-type and *Brf1^{+/-}* 8-cell embryos became blastocysts within 2 days, none of the 12 *Brf1^{-/-}* embryos isolated progressed (Fig. 1e). Taken together these data show that Brf1 is essential for blastocyst formation and that *Brf1* heterozygosity slows progression, which may account for sub-Mendelian ratios of pups.

BRF1 is essential for liver function

We next assessed the impact of attenuating specific Pol-III activities in adult mice using *AhCre*. This Cre recombinase is under the control of a *Cyp1a1* promoter that can be induced by β -naphthoflavone [48]. Recombination occurs in hepatocytes and the enterocytes of the small intestine [48], allowing the comparison of slowly dividing hepatocytes with highly proliferative intestinal enterocytes and stem cells.



At 8 days post-induction (dpi) we observed increased levels of circulating Bilirubin, alkaline phosphatase and alanine aminotransferase in *AhCre Brf1^{fl/fl}* mice (Fig. 2a) consistent with liver injury and dysfunction. Lineage tracing

experiments with the *Rosa26^{LSL-RFP}* reporter allele showed that virtually all hepatocytes retained RFP expression (Fig. 2b). Furthermore, *Brf1* mRNA levels were reduced as visualised by BaseScope and quantified by qPCR (Fig. 2c,

◀ **Fig. 2** BRF1 down-regulation in the livers of *AhCre Brl1^{fl/fl}* mice. **a** Graphs showing levels of the specified liver enzymes in the blood of mice of the indicated genotypes. *Brl1^{+/+}* mice are a combination of *AhCRE Brl1^{+/+}* and *AhCre* negative mice, *Brl1^{+/fl}* mice are *AhCRE Brl1^{+/fl}* mice, whilst *Brl1^{fl/fl}* mice are *AhCre Brl1^{fl/fl}* mice. *P*-values are calculated using a Mann–Whitney non-parametric test and show the significance between *+/+* and *fl/fl* values. **b** Immunohistochemistry for RFP performed on liver sections. *Brl1^{+/+}* mice are a combination of *AhCRE Brl1^{+/+}* and *AhCre* negative mice, whilst *Brl1^{fl/fl}* mice are *AhCre Brl1^{fl/fl}* mice. Day post-induction with β -naphthoflavone is indicated above the panels. **c** BaseScope hybridisation showing expression of *Brl1* mRNA in wild-type mice and *Brl1^{fl/fl}* mice at 2, 6 and 8dpi. **d** Graphs showing reduction of *Brl1* mRNA levels and Pol-III target levels upon *Brl1* loss. Graph on the left depicts levels of *Brl1* mRNA measured by qPCR. Reduction in *Brl1* mRNA levels is significant for each day ($p < 0.05$). Graph on the right depicts levels of two tRNAs, tRNA^{IMET} and tRNA^{ILE14}, and the U6 RNA. Changes in tRNA levels are significant on each day ($p < 0.05$). Mouse genotype and day post-induction is shown on the x-axis. Values are plotted relative to WT control for each day shown

d). Importantly this resulted in a specific loss of Brl1 function, as tRNA^{IMET} and tRNA^{ILE14} levels were reduced within 2 days of induction and remained low at 6dpi and 8dpi, whereas expression of the Brl1-independent Pol-III target U6 was not reduced (Fig. 2d).

Reduced tRNA levels are likely to decrease protein synthesis. To investigate this we quantified the translation activity in *Brl1* deficient hepatocytes using sucrose density gradient analysis at 4, 6 and 8dpi. Livers at 4dpi showed a decrease in polysome loading that decreased further during the time course (Fig. 3a). Indeed, at 8dpi there are virtually no polysomes remaining, consistent with a shortage of tRNAs dramatically decreasing translation rates.

Consistently, *Brl1* deletion was detrimental for liver homeostasis, with morphology notably altered 6 and 8dpi. *Brl1* deficient livers showed high levels of apoptosis, immune cell infiltration and necrosis (Fig. 3b). Moreover, *Brl1* deficient livers were significantly smaller at day 8 (Fig. 3c). *Brl1* deletion resulted in a modest induction of p53 at 4dpi, which increased further on days 6 and 8 (Fig. 3d). The stress markers p21 and γ H2AX were also increased, but only from 6dpi, with prominent induction at day 8 (Fig. 3d, S Fig. 3A). Some hepatocytes also stained for cleaved caspase 3, a feature of apoptosis, and cytoplasmic cytokeratin, a feature of collapse (S Fig. 3B). Importantly, the liver stress phenotype occurs after the molecular effect of *Brl1* deletion on translation seen at day 4, implicating suppressed translation as the driver of liver damage.

To remove any confounding effects of extrahepatic recombination of the *Brl1* allele we used a liver tropic adeno-associated virus construct (AAV8) to deleted *Brl1* only in the liver. The rapid and dramatic phenotype of *Brl1* deletion was recapitulated in this system, where within 4 days of AAV treatment p53 levels were induced and

within 6 days p21 and cleaved caspase 3 levels were upregulated in *Brl1^{fl/fl}* mice (S Fig. 4A). AAV8-CRE treatment brought upon a liver collapse phenotype in *Brl1^{fl/fl}* mice as characterised by increased pan-cytokeratin staining and circulating levels of bilirubin, alkaline phosphatase and alanine aminotransferase (S Fig. 4B). This was accompanied by reduced liver to body weight in (S Fig. 4C) and decreased tRNA^{ILE14} but no reduction in U6 RNA expression (S Fig. 4D).

Importantly, heterozygous deletion of *Brl1* using AAV8-CRE did not result in a reduction of Brl1 protein, despite efficient loss of the protein following homozygous deletion (S Fig. 4E). This indicates that heterozygous deletion of the *Brl1* gene is not sufficient to suppress protein expression, consistent with no effect on Brl1-dependent Pol-III transcription (S Fig. 4D).

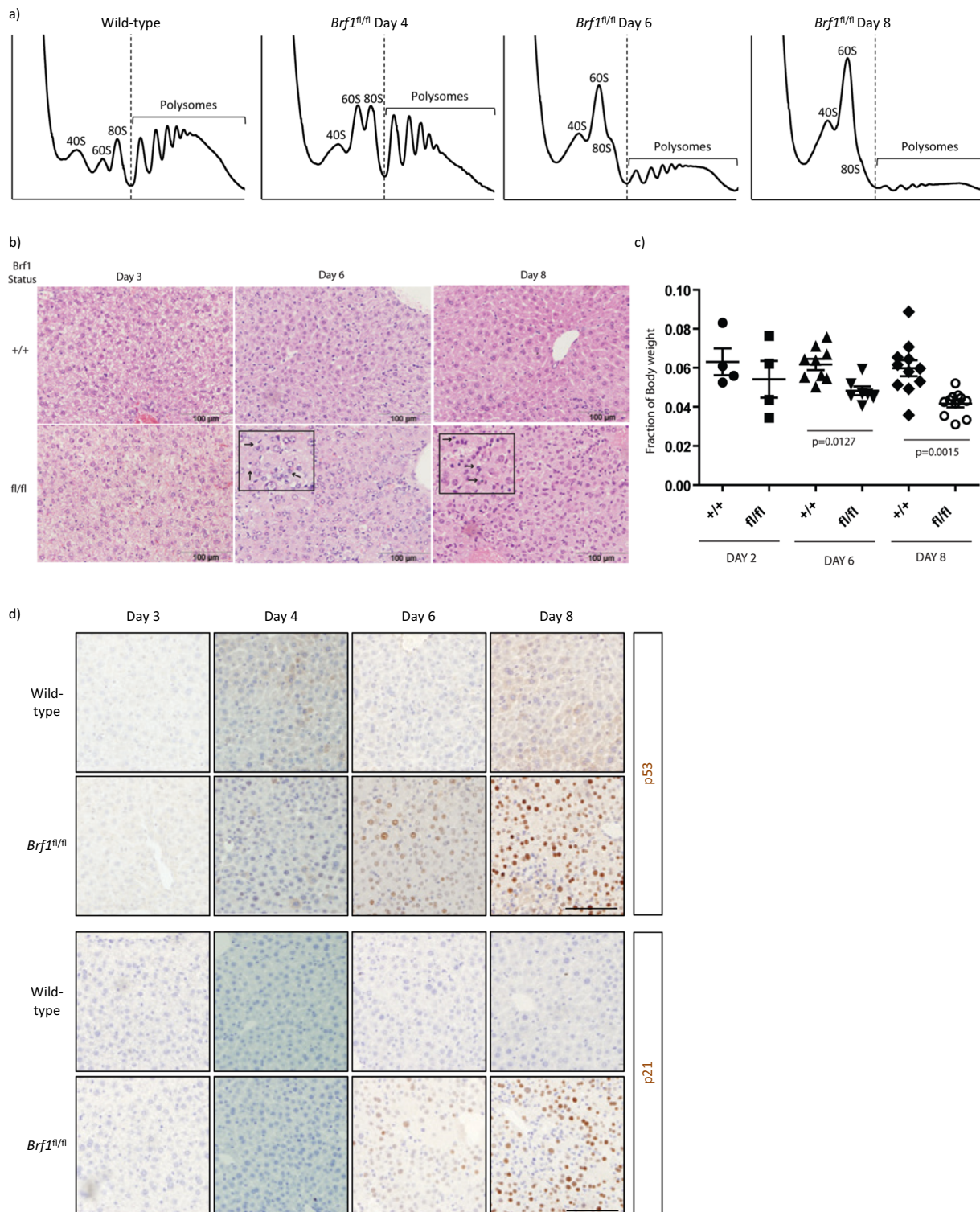
BRF1 is essential for gut homeostasis

We next examined intestinal homeostasis in *AhCre Brl1^{+/+}*, *Brl1^{fl/+}* and *Brl1^{fl/fl}* mice from 2 to 8dpi. *Rosa^{LSL-RFP}* reporter recombination was observed within 2dpi in line with reduced *Brl1* mRNA expression (Fig. 4b). Consistent with reduced Brl1 function there was a reduction in Pol-III transcript levels by in situ hybridisation against tRNA^{IMET} at both 2 and 3dpi (Fig. 4a). Therefore, we conclude that from 2dpi, Brl1, and specific Pol-III activity is reduced in the intestinal epithelium. Histologically we observed smaller, collapsing crypts and induction of cleaved caspase 3 (Fig. 5a, b). Moreover, at 3dpi, there was an increase in staining for p53, γ H2AX and p21 (Fig. 5c). Therefore, similar to the liver, loss of Brl1 induces activation of p53, p21 and γ H2AX and apoptosis.

The intestinal epithelium has a remarkable ability to regenerate, with previous studies showing that deletion of genes required for viability leading to regeneration of the intestine from non-recombined cells [48–50]. By 8dpi the histology of the intestinal epithelium appeared normal. In contrast to day 2, when *Brl1* mRNA expression was reduced and RFP expression was high, at 8dpi we saw high *Brl1* expression and loss of RFP expression (Fig. 4a). This strongly suggests that at later time points Brl1 deficient cells are lost, being replaced by non-recombined Brl1 expressing cells.

BRF1 overexpression rescues loss of BRF1 but does not induce proliferation

We next assessed the consequences of increased expression of Brl1. The liver is slowly proliferative, making this an ideal organ to assess if Brl1 induction promotes proliferation and growth. A lox-STOP-lox allele containing human *BRF1* was engineered to express from the *Hprt* locus upon



Cre induction ($Hprt^{LSL-BRF1}$). To validate the $BRF1$ transgene, we assessed whether its expression rescues the phenotype of $Brf1$ loss. We generated $AhCre Brf1^{fl/fl} Hprt^{LSLBRF1}$ mice (HOM/TG) where, upon induction, both endogenous copies of $Brf1$ are deleted and human $BRF1$ is expressed. Livers from these mice were harvested 8dpi and

compared with those from $AhCre Brf1^{+/+}$ (WT) and $AhCre Brf1^{fl/fl}$ (HOM) mice. Human $BRF1$ was detected by immunohistochemistry in the HOM/TG mice, indicating expression from the transgene (Fig. 6a) and $Brf1$ mRNA expression was increased in these mice (S Fig. 5A). Furthermore, the levels of $tRNA^{iMet}$ and $tRNA^{ILE14}$ are also

◀ **Fig. 3** Brf1 is essential for adult mouse liver function. **a** Polysome profiles from liver samples of *Brf1*^{+/+} mice (Ah-Cre *Brf1*^{+/+}) harvested at day 8 post induction and *Brf1*^{fl/fl} (Ah-Cre *Brf1*^{-/-}) mice harvested at days 4 (*n* = 2), 6 (*n* = 3) and 8 (*n* = 4) post induction as shown. *Brf1*^{+/+} mice are a combination of Ah-CRE *Brf1*^{+/+} and mice without Ah-Cre (*n* = 3). **b** H&E stained mouse liver samples. *Brf1*^{+/+} mice are a combination of AhCRE *Brf1*^{+/+} and AhCre negative mice, whilst *Brf1*^{fl/fl} mice are AhCre *Brf1*^{fl/fl} mice. Day post-induction with β -naphthoflavone is indicated above the panels. Insets for day 6 and day 8 samples are 400x magnifications to better show tissue morphology. Arrows in the inserts show immune cell infiltration and collapsing hepatocytes. **c** Graph depicting mouse liver weight as a fraction of total body weight. Genotypes and day post-induction are shown on the x-axis. *Brf1*^{+/+} mice are a combination of AhCRE *Brf1*^{+/+} and AhCre negative mice, whilst *Brf1*^{fl/fl} mice are AhCre *Brf1*^{fl/fl} mice. *P*-values were calculated using a Mann–Whitney test to compare +/+ and fl/fl data. Changes at day 2 are not significant. Between 4 and 10 mice were analysed per genotype per time point. **d** IHC for p53 or p21, as indicated, on liver samples from mice harvested at 3, 4, 6 and 8dpi. Day post-induction with β -naphthoflavone is indicated above the panels. *Brf1*^{+/+} mice are a combination of AhCRE *Brf1*^{+/+} and AhCre negative mice, whilst *Brf1*^{fl/fl} mice are AhCre *Brf1*^{fl/fl} mice

higher in the HOM/TG mice compared with HOM mice (S Fig. 5B) demonstrating that human BRF1 is able to restore, at least in part, Pol-III function following loss of endogenous *Brf1*. Importantly, HOM/TG mice have circulating liver enzyme levels and liver sizes comparable to WT mice, and no induction of p53 or p21 (Fig. 6a–c). Polysome analysis also showed that the *BRF1* transgene rescued the translational defects seen with *Brf1* deletion (S Fig. 6).

Next, we analysed whether acute overexpression of *BRF1* induces proliferation. No robust phenotype was observed in terms of proliferation or apoptosis in the liver of *AhCre Hprt*^{LSL-BRF1} mice at 8dpi. (S Fig. 7A–C). Moreover, when *Hprt*^{LSL-BRF1} mice were crossed to animals expressing ubiquitous *CAAG-Cre*^{ER} to activate BRF1 across the mouse, no gross phenotypes were observed (data not shown).

BRF1 heterozygosity does not alter tumorigenesis

Next we analysed the impact of *Brf1* upon intestinal tumorigenesis. Previous work has shown that *c-Myc* stimulates *Brf1* and Pol-III-mediated transcription. *C-Myc* is a target of the WNT signalling pathway, and haploinsufficiency for *c-Myc* can slow *Apc* loss-mediated intestinal tumorigenesis [51]. We therefore crossed *Brf1*^{fl/+} mice to *AhCre Apc*^{fl/+} mice, which develop tumours upon loss of the remaining *Apc* allele.

Cohorts of *AhCre Apc*^{fl/+} *Brf1*^{+/+} and *AhCre Apc*^{fl/+} *Brf1*^{fl/+} were aged until they developed signs of intestinal neoplasia. Heterozygous loss of *Brf1* did not alter tumor development (S FIG 8A) or tumor number or size (S FIG 8B), suggesting that Brf1 is not limiting for intestinal tumorigenesis. Importantly, following heterozygous deletion of *Brf1* in the liver for 10 days we saw a 50% reduction in *Brf1* mRNA, but no difference in Brf1 protein or

expression Pol-III targets (S Fig. 4). It was not possible to analyse Brf1 protein expression within intestine due to its multicellular nature; *AhCre* driven recombination only deletes genes in a fraction of the tissue. Nevertheless, we conclude that heterozygous deletion of Brf1 in the intestine does not limit tumorigenesis.

We next analysed the role of Brf1 in pancreatic tumour development where heterozygosity for *c-Myc* strongly suppresses pancreatic cancer formation [52]. We crossed *Brf1*^{fl/+} mice to the KPC mouse model (*LSL-Kras*^{G12D}, *LSL-Trp53*^{R172H} with *Pdx1-Cre*). These KPC mice develop pancreatic ductal adenocarcinoma with a median incidence of 4 months [53]. Activation of KRAS and loss of p53 increases Pol-III activity in other tumor settings [24, 54].

We generated and aged cohorts of KPC mice either wild-type, heterozygous or homozygous for deletion of *Brf1* (Fig. 7a). There was no change in survival between KPC and KPC *Brf1*^{fl/+} mice; however, there was a significant delay in PDAC formation in KPC *Brf1*^{fl/fl} mice (Fig. 7b) where survival was extended by 40 days compared to KPC mice. The pancreatic tumours that developed in KPC *Brf1*^{fl/fl} mice were similar in morphology to those of KPC and KPC *Brf1*^{fl/+} mice.

Pdx1-Cre expression is mosaic in the developing pancreas. Thus, it is possible that non-recombined cells preferentially populate the pancreas, as previously observed [55]. We found that tumours from KPC *Brf1*^{fl/fl} mice showed a lack of recombination at the *Brf1* locus (S FIG 10A). Therefore the difference in survival is not due to any effect of Brf1 on tumorigenesis but rather the time taken for establishment of Brf1-proficient pancreata.

Consistent with this, *Pdx1-Cre Brf1*^{fl/fl} were lived for over 300 days (data not shown). Given the embryonic lethality upon loss of *Brf1* and the apparently normal pancreata of *Pdx1-Cre Brf1*^{fl/fl} mice, we examined if these were also composed of non-recombined cells. *Pdx1-Cre Brf1*^{fl/fl} mice carrying the *Rosa26*^{LSL-RFP} reporter allele did not show recombination (S FIG 10B) with no recombination confirmed by PCR for the *Brf1* locus (S FIG 9). Thus, deletion of *Brf1* in the pancreas is not conducive with its development.

We therefore examined the impact of BRF1 overexpression in a longer latency (350 days) pancreatic model: *LSL-Kras*^{G12D/+} *Pdx1-Cre* (KC), crossing this with the human *Hprt*^{LSL-BRF1}. We saw no difference in survival between KC and KC *Hprt*^{LSL-BRF1} (Fig. 7c). Overexpression of BRF1 was confirmed and increased tRNA^{iMET} and tRNA^{ILE14} expression at 6 weeks post induction (Fig. 7d, e). Together this suggests that Brf1-dependent Pol-III activity is not limiting for pancreatic tumorigenesis.

Interestingly, overexpression of BRF1 in wild-type livers did not restore tRNA expression (S Fig. 5) in *Brf1*^{fl/fl} mice but did increase tRNA expression in *Kras* mutant pancreas

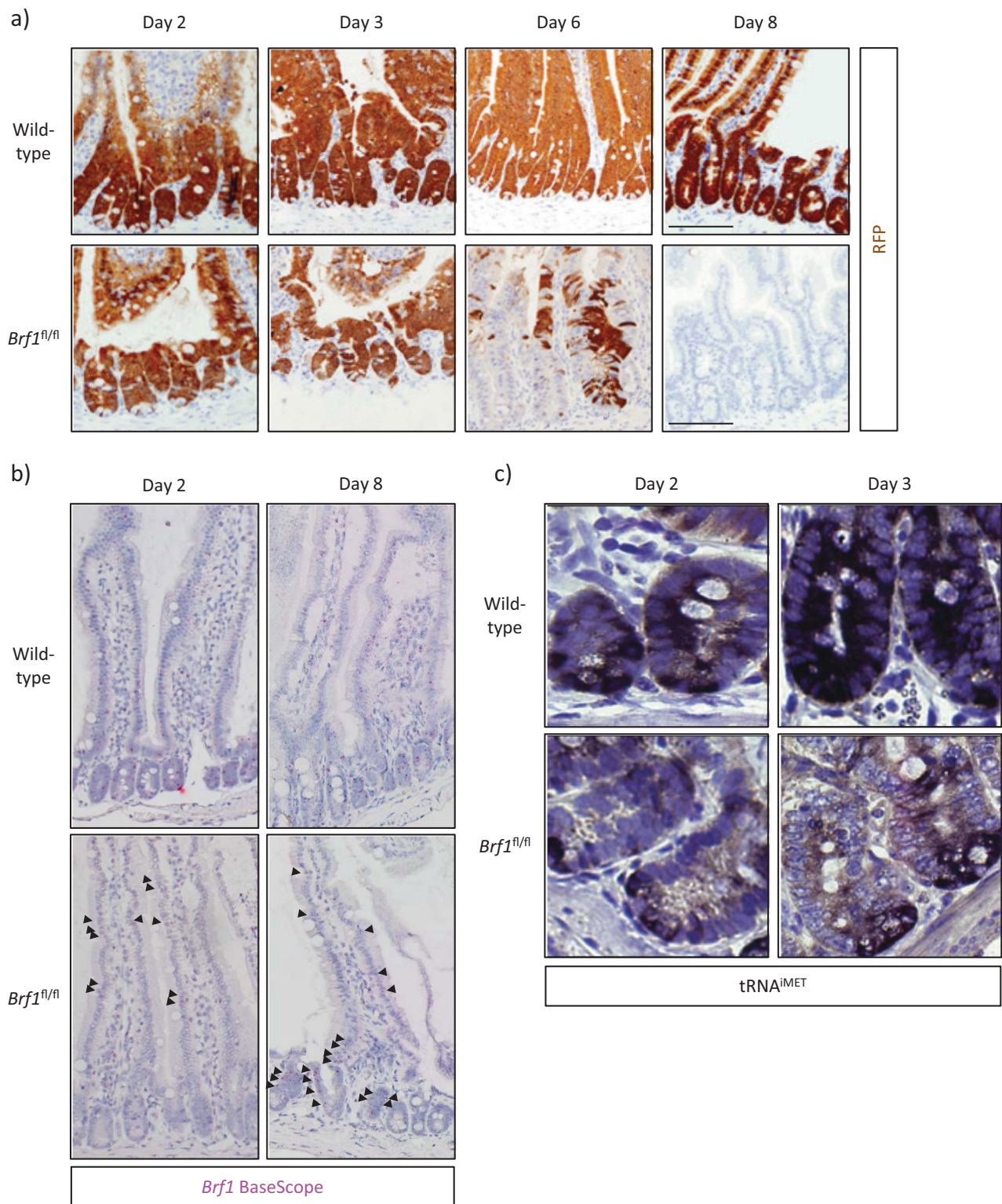


Fig. 4 Loss of recombined cells upon *Brf1* deletion in intestinal crypts. **a** Immunohistochemistry for RFP on sections of FFPE intestinal tissue. *Brf1*^{+/+} mice are a combination of *AhCRE Brf1*^{+/+} and *AhCre* negative mice, whilst *Brf1*^{fl/fl} mice are *AhCre Brf1*^{fl/fl} mice. Day post-induction with β -naphthoflavone is indicated above the panels. Scale bar in 100 μ m. **b** BaseScope hybridisation for *Brf1* mRNA expression in the

intestines of wild-type (induced *AhCre* negative *Brf1*^{fl/fl} mice) or *Brf1*^{fl/fl} mice at 2 and 8dpi. **c** In situ hybridisation using a probe against tRNA^{MET}. *Brf1*^{+/+} mice are a combination of *AhCRE Brf1*^{+/+} and *AhCre* negative mice, whilst *Brf1*^{fl/fl} mice are *AhCre Brf1*^{fl/fl} mice. Day post-induction with β -naphthoflavone is indicated above the panels

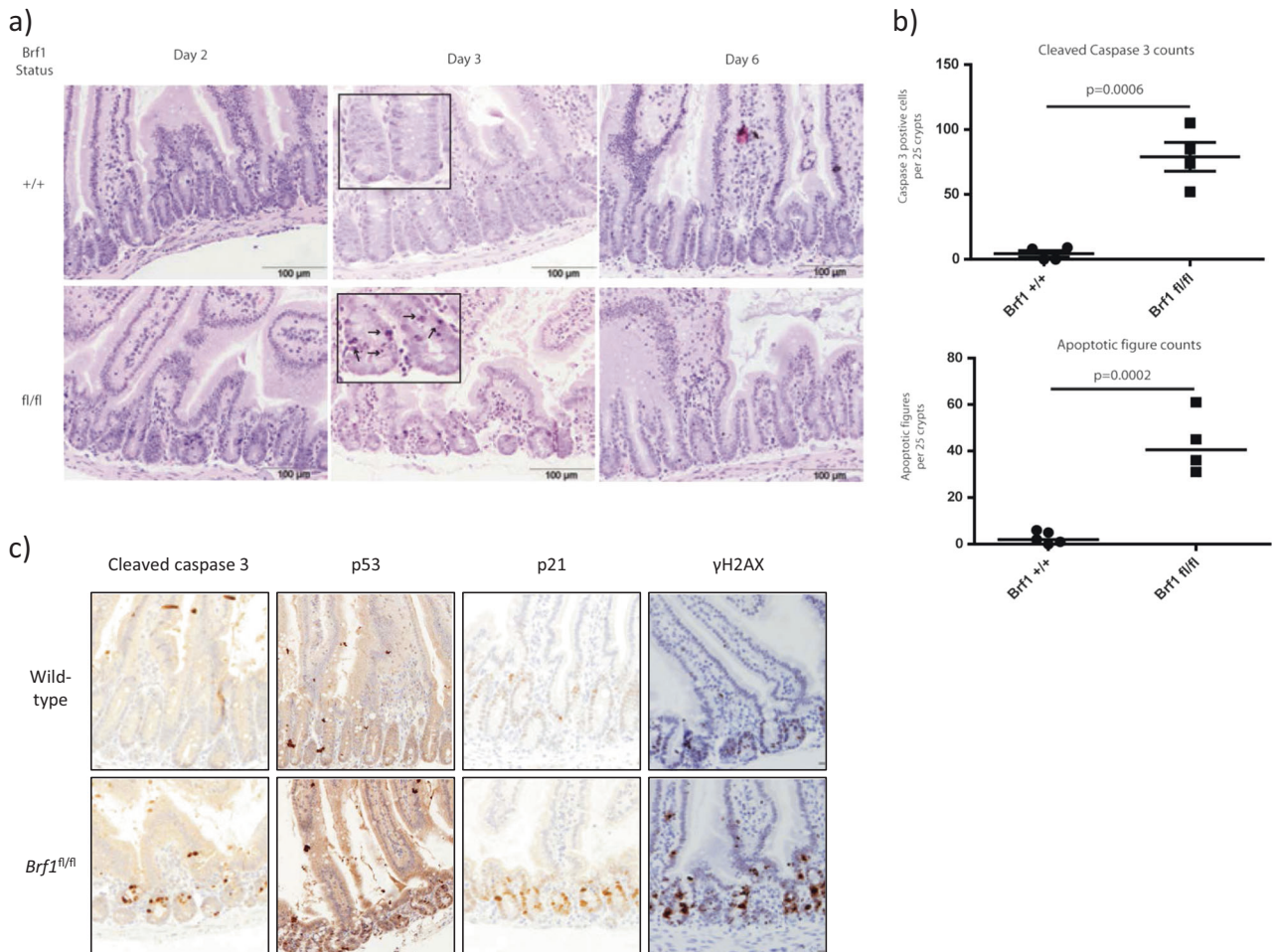


Fig. 5 Brf1 is essential in mouse gut homeostasis. **a** H&E stained sections of mouse intestinal tissue. *Brf1*^{+/+} mice are a combination of *AhCRE Brf1*^{+/+} and *AhCre* negative mice, whilst *Brf1*^{fl/fl} mice are *AhCre Brf1*^{fl/fl} mice. Day post-induction with β -naphthoflavone is indicated above the panels. Insets of day 3 samples are 400x magnification to better show tissue morphology. Arrows in the insets show immune cell infiltration and cells undergoing apoptosis. **b** Top graph shows quantification of cleaved caspase 3 counts. Genotypes are shown on the x-axis and counts per 25 full crypts are shown on the

y-axis. Bottom graph shows quantification of apoptotic figures. Genotypes are shown on the x-axis and apoptotic figure counts per 25 full crypts are shown on the y-axis. *P*-values calculated for a Mann–Whitney non-parametric test are shown. Four mice were used for each genotype. **c** IHC on sections of intestine from mice harvested 3dpi using the antibodies indicated. *Brf1*^{+/+} mice are a combination of *AhCRE Brf1*^{+/+} and *AhCre* negative mice, whilst *Brf1*^{fl/fl} mice are *AhCre Brf1*^{fl/fl} mice

(Fig. 7d). This may be due to tissue specific differences in Pol-III regulation or a role for mutant *Kras* in tRNA transcription. Mutant *Ras* promotes tRNA synthesis via Brf1 in *Drosophila* [56], providing a possible explanation for the enhanced tRNA transcription in BRF1 over-expressing, *Kras* mutant pancreata.

Discussion

Pol-III activity is upregulated in cancer and is often associated with oncogenic driver mutations [16, 22, 38]. Despite this, few studies have addressed whether increased Pol-III activity overcomes a functional limitation for Pol-III. It is also unclear whether there is a therapeutic window for

targeting Pol-III. Therefore, we engineered mice to specifically up or downregulate Brf1, in both normal and cancerous cells, to address the role of Pol-III in vivo.

We show that BRF1 is essential for organ homeostasis, but not limiting in selected instances of tumorigenesis. Constitutive knockout of *Brf1* leads to a pre-implantation defect due to an impaired passage from morulae to blastocyst at 3.5dpc. There is an increase in energy demand during at this point of embryo development, and the embryo is large enough to dilute maternal mRNAs [36]. Pol-III activity has been detected as early as the 2 cell embryo [57]. Increased growth and energy demand during the passage from morulae to blastocyst, coupled with a possible dilution of maternal *Brf1* message, makes *Brf1* essential at 3.5dpc. Development was the only

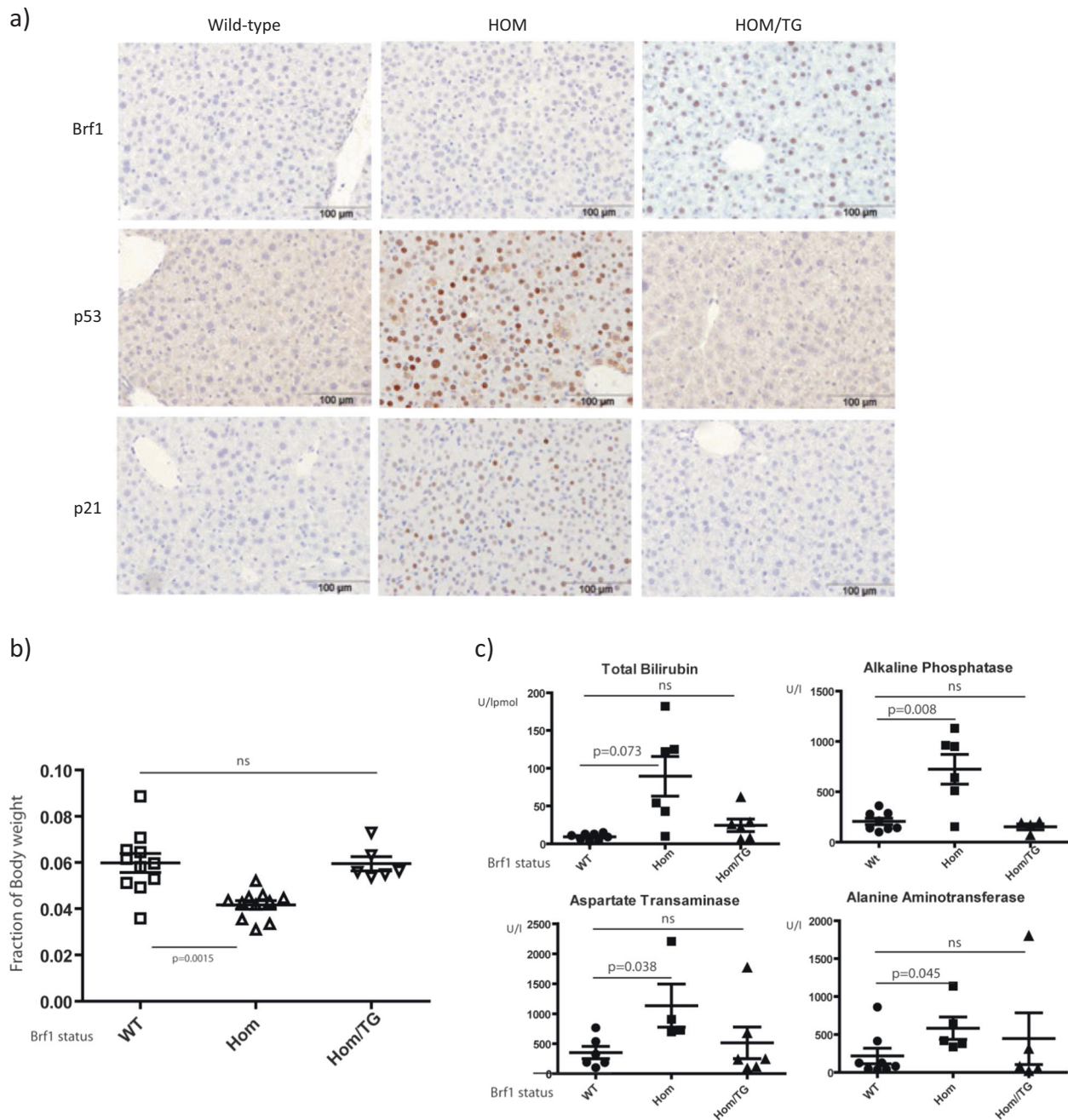


Fig. 6 Expression of human *BRF1* rescues loss of *Brf1* liver phenotype. **a** IHC for *BRF1*, *p53* and *p21* on liver samples from mice harvested at day 8 post-induction. Mouse genotypes are indicated above the panels. WT mice are a combination of *AhCre Brf1^{+/+}* mice and *AhCre* negative mice, Hom mice are *AhCre Brf1^{fl/fl}* and Hom TG mice are *AhCre Brf1^{fl/fl} Hprt^{LSLBRF1}* mice containing an extra copy of human *BRF1*. **b** Graph depicting mouse liver weight as a fraction of total body weight of animal harvested 8dpi. Genotypes are indicated on the x-axis. WT mice are a combination of *AhCre Brf1^{+/+}* mice and *AhCre* negative mice ($n = 11$), Hom mice are *AhCre Brf1^{fl/fl}* ($n = 11$) and Hom TG mice are *AhCre Brf1^{fl/fl} Hprt^{LSLBRF1}* mice containing an

extra copy of human *BRF1* ($n = 6$). *P*-values are calculated for a non-parametric Mann–Whitney test. Changes between WT and Hom/TG mice are not significant whereas changes between *Brf1^{fl/fl}* and WT animals are significant ($p < 0.05$). **c** Graphs showing levels of the specified liver enzymes in the blood of mice with the indicated genotypes. WT mice are a combination of *AhCre Brf1^{+/+}* mice and *AhCre* negative mice ($n = 8$), Hom mice are *AhCre Brf1^{fl/fl}* ($n = 5$) and Hom TG mice are *AhCre Brf1^{fl/fl} Hprt^{LSLBRF1}* mice containing an extra copy of human *BRF1* ($n = 5$). *P*-values are calculated for a non-parametric Mann–Whitney test. Changes between WT and Hom/TG mice are not significant

instance of a phenotype from *Brf1* heterozygosity. However, as *Brf1* heterozygous mice were viable and of

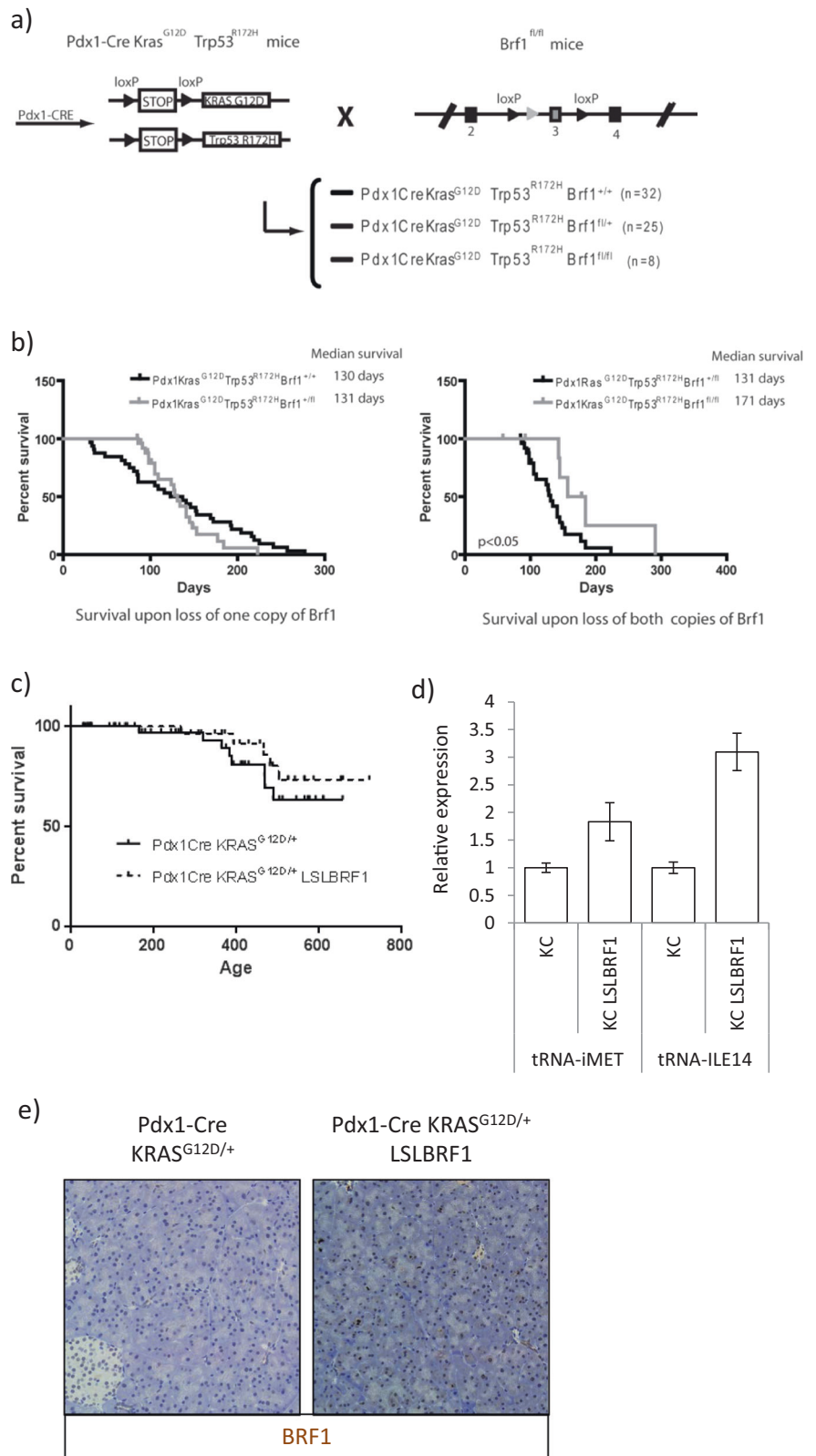
normal size there may be compensatory mechanisms during development.

Fig. 7 Brf1 is essential during pancreas development.

a Schematic showing the crosses performed to obtain the respective cohorts to assess the effects of *Brf1* deletion in a mouse model of PDAC.

b Kaplan–Meier curves showing pancreatic tumor-free survival in *KPC Brf1^{+/+}* (*n* = 32) vs *KPC Brf1^{fl/fl}* (*n* = 26) mice (left panel) and for *KPC Brf1^{fl/fl}* (*n* = 26) vs *KPC Brf1^{fl/fl}* (*n* = 8) mice (right panel). Median survival for each genotype is indicated.

c Kaplan–Meier survival curves showing pancreatic tumor-free survival in KC (*Pdx1-Cre Kras^{G12D/+}*, continuous line, *n* = 44) vs KC *HPRT^{LSL-BRF1} Kras^{G12D/+}* mice (*Pdx1-Cre Kras^{G12D/+} HPRT^{LSL-BRF1}*, disrupted line, *n* = 33). **d** tRNA^{iMET} and tRNA^{ILE14} expression in pancreata from KC (*Pdx1-Cre Kras^{G12D/+}*) and KC *LSLBRF1* mice (*Pdx1-Cre Kras^{G12D/+} HPRT^{LSL-BRF1}*) mice at 6 weeks post induction. *N* = 3 per genotype. **e** Staining for BRF1 in pancreata from KC (*Pdx1-Cre Kras^{G12D/+}*) and KC *HPRT^{LSLBRF1}* mice (*Pdx1-Cre Kras^{G12D/+} HPRT^{LSL-BRF1}*) mice at 6 weeks post induction



Within 3 days of deleting *Brf1* in the crypts of the small intestine we observed an increase in p53, p21, γ H2AX protein and apoptosis. Therefore, in a rapidly dividing

epithelium there is an immediate requirement for Pol-III activity, and if not present, a p53 response is activated, likely due to the preceding reduction in the protein

synthesis. It is worth noting that even in times of translational stress, specific translation can be induced [58]. The gut is especially sensitised to p53-induced death, as has been observed following deletion of CHK1 or BRCA2 [59, 60]. We observed rapid repopulation of the intestine with non-recombined cells, which precluded characterisation of the impact upon translation. This is a well-known phenotype of the intestinal epithelium and is aided by the process of neutral drift, where a single crypt stem cell can repopulate the entire crypt [61, 62].

The liver provided a more tractable system to investigate the effects of *Brf1* loss. Liver epithelial turnover is slower and effective recombination is possible in a potentially regenerative epithelium [63, 64]. In *Brf1* knockout livers there was an induction of p53 at day 4, becoming more prominent at day 6 and day 8, when p21 and γ H2AX were subsequently induced. p53 induction followed the reduction in polysome associated mRNAs, with a mild reduction at day 4, which progressed to an almost complete absence of polysomes by day 8. This ultimately led to liver failure as evidenced by jaundice, liver architectural disturbance and clinical deterioration. Given the kinetics of p53 induction and the polysome profiles, we suggest that reducing Pol-III activity decreases protein synthesis, which in turn acts as a “checkpoint” to signal the upregulation of p53. It is also noted that while the overall rate of protein synthesis falls after *Brf1* deletion we again see a marked induction of p53 and p21. This phenomenon suggests preferential translation of certain transcripts or a reduced degradation of certain proteins.

Finally, we show that *Brf1* is also essential during pancreatic development using *Pdx1-Cre*. *Pdx1* is expressed from 8.5dpc and plays a role in differentiation of all pancreatic lineages. Adult pancreata from *Pdx1-Cre Brf1^{fl/fl}* appeared normal but were composed exclusively of non-recombined cells, arguing for a strong negative selection against *Brf1* deletion.

We hypothesised that *Brf1* heterozygous mice would show suppression of tumour initiation and development. However, outside a possible impact during embryogenesis, we found no effect in homeostasis for three epithelia (pancreas, intestine and liver), or tumorigenesis for two epithelia (pancreas and intestine). Given difficulties in detecting mouse *Brf1* protein levels it is possible that heterozygotes might maintain protein levels similar to wild-type. Indeed, we have shown this to be the case following heterozygous deletion in the liver. Conversely, overexpression of BRF1 did not initiate or promote tumorigenesis. Therefore, we were unable to find a limiting role for *Brf1* activity in cancer despite the large number of studies showing Pol-III deregulation. Most of the work investigating Pol-III activity has compared normal cells to late stage cancer cells. Therefore there has

not been a stage-specific characterisation of the timing of BRF1 and Pol-III activity upregulation during carcinogenesis. Thus, it may be that oncogenes such as *c-MYC*, activate Pol-III expression during tumor initiation, mimicking developmental and homeostatic scenarios where Pol-III activity is required. Consistent with this a recent study showed a progressive increase in Pol-III activity in a model of breast cancer initiation and progression, which correlated with *c-MYC* activity [65]. However, levels of Pol-III activity are not limiting at these stages and increasing Pol-III activity per se in the absence of an oncogenic event is insufficient to drive proliferation and growth. This differs to the *Drosophila* scenario, where BRF1 is required for normal pupa development [29, 30], and may reflect increased mechanisms to control growth in longer lived mammals. Indeed, the oncogenic potential of BRF1 has recently been questioned with loss-of-function mutations in BRF1 potentially actually responsible for some heritable colorectal cancers [66]. Similarly, high BRF1 expression is a favourable prognostic marker in breast cancer [67].

Finally, it is possible that increased Pol-III activity in cancer may be important beyond proliferation and growth. Most work comparing normal and cancer cells involves late stage aggressive tumor cells. Thus, Pol-III activity may be important in invasion, migration and angiogenesis. Indeed, two recent reports show that Pol-III could be involved in tumour cell migration and metastasis [44, 45]. It is interesting to note that small molecules targeting Pol-I can specifically target cancer cells while sparing normal counterparts [68]. Approaches to reduce BRF1 beyond heterozygosity might be required to reveal a limiting function and be tolerated by normal cells.

In summary, we have revealed a vital role for BRF1 in development and homeostasis. However, we found little evidence for a role for *Brf1* as a driver of cancer as tumor and normal cells appear equally reliant on its fundamental activity. Moreover, Pol-III activity alone is not sufficient to transform cells or drive proliferative or growth phenotypes in the epithelia studied.

Materials and methods

Genetically modified mice and animal care

Animals were kept in conventional animal facilities and experiments were carried out in compliance with U.K. Home Office guidelines (ASPA 1986 & EU Directive 2010). Mice were genotyped by Transnetyx INC. (Cordova, Tennessee). *Brf1^{fl/+}* heterozygous mice were crossed to Deleter-Cre recombinase [46] to excise exon 3 and generate the knockout allele. The *Brf1^{fl/+}* and HPRT^{LSL-BRF1} mice

were also crossed with the Pdx1-Cre and Ah-Cre mouse strains previously described [48, 69]. To induce recombination in the Ah-Cre mice three intraperitoneal injections of β -naphthoflavone (80 mg/kg) were given at 4 h intervals. For AAV induction, mice were injected with virus particles 2×10^{11} genetic copies (GC)/mouse of either AAV8.TBG.Cre.Rbg (UPenn Vector Core, #: AV-8-PV1091) vector or AAV8.TBG.PI.null.bGH (control virus) (UPenn Vector Core, #: AV-8-PV0148) via tail vein in 100 μ l PBS as previously described [70].

Generating Brf1 flox mice

Mice carrying the *Brf1* flox allele were generated by Taconic Artemis (Cologne, Germany) according to their standard procedures.

Generating Brf1 TG mice

Conditional BRF1 expressing mice were generated by targeting a human *BRF1* cDNA under the Cre-dependent control of a CAAG promoter to the expression-permissive HPRT locus [71]. The targeting vector was generated essentially as described by [72] but with a cDNA encoding the full length human BRF1 protein cloned downstream of the lox-stop-lox. The vector was linearised and electroporated into Hprt-deficient HM1 ES cells, cultured on a DR4 mouse embryonic fibroblast feeder layer [73, 74].

Homologous recombinants were selected in medium containing HAT supplement (Sigma). Correct targeting of the vector to the Hprt locus on both the 5', and 3' sides was confirmed using PCR on genomic DNA. Genotyping was performed by PCR using Expand Long Template (Roche) according to the manufacturer's recommendations. Primers used for genotyping targeted ES cells were 5': GTTGCTGAGGCCAAAAATAGTGTAAT and CCATTTACCGTAAGTTATGTAACGC and 3': CTACCTAGTGAGCCTGCAAACCTG and ATGTAA GTGCTAGGAATTGAACCTG.

Following identification of correctly targeted clones, derived by injection of targeted mESC into C57BL/6J blastocysts according to standard protocols [75]. Germline transmission was identified by coat colour and transmission of the transgene confirmed by PCR.

In situ hybridisation

Single strand probes labelled with digoxigenin were generated from a linearised tRNA^{iMET} gene using DIG RNA labelling kit (Roche) according to the manufacturer's specifications. RNA dot blot analysis was used to normalise the sense and antisense riboprobes. Hybridization was carried

out in a sealed, humidified container at 65 °C for 24 h with 0.5 μ g/ml riboprobe and 50 μ g/ml yeast tRNA in 50% deionised formamide, 5X SSC (pH 4.5), 2% blocking powder (Roche), 0.5% CHAPS, 1x Denhardt's solution (Sigma), 10% Dextran sulphate, 1 μ g/ μ l salmon sperm DNA (Sigma) and 5 mM EDTA. After hybridization, sections were rinsed once in 2X SSC (pH 4.5) followed by 3 washes of 20 min at 65 °C in 2X SSC/50% formamide. Sections were then rinsed 5 times in TBS and blocked for 1 h in 0.5% blocking powder (Roche) in TBS. Signal was detected using DIG Nucleic Acid Detection Kit (Roche) according to the manufacturer's specifications. BaseScope analysis was carried out according to the manufacturer's instructions (ACD Bio) using a probe designed to target bases 548-633 of mouse *Brf1*.

Immunohistochemistry

Tissues were fixed in 10% neutral buffered formalin for no longer than 24 h before being processed into paraffin blocks according to standard protocols. For harvesting of the intestine samples, small intestines removed and flushed with water. The first 5 cm of intestine were divided into 1-cm lengths, bundled using surgical tape, and then fixed in 4% formaldehyde at 4 °C for no more than 24 h before processing. Tissue sections (5 μ m) were either stained using haematoxylin and eosin (H&E), for histological analysis, or were used for immunohistochemistry (IHC) using standard methods. Antibodies used for IHC are in Supplemental Table 2 together with the appropriate dilutions for use. For each antibody, staining was performed on at least three mice of each genotype. Representative images are shown for each staining.

Crypt size and apoptosis assay

Apoptosis and crypt size were scored from H&E stained sections as previously described [76]. For each analysis, 25 full crypts or 50 half crypts were scored from at least three mice of each genotype.

Harvesting and genotyping 2.5dpc and 3.5dpc embryos

Embryos at 8-cell and blastocyst stage were collected by dissecting and flushing oviducts with M2 medium (M7167, Sigma-Aldrich) as described [75]. At 3.5dpc embryos were genotyped via conventional PCR using a combination of oligo1, oligo 2 and oligo 3 primers, sequences shown in Supplemental Table 2. Embryos were transferred directly in the PCR mixture and loaded into Bio-Rad DNA Engine DYAD Thermal Cycler with the following cycling parameters 95 °C 10 min, 30 cycles of

95 °C 30 s, 60 °C 30 s, 72 °C 30 s and 72 °C 10 min. PCR products were separated and visualised on an agarose gel.

In order to carry out the *in vitro* growth assay each of the 3.5dpc embryos was grown in a separate well of a gelatine-coated 96-well plate in DMEM media supplemented with 15% Fetal Calf Serum and non-essential amino acids. Pictures of each embryo were taken each day for 5 days using an Olympus CKX41 light microscope with a Qimageing Fast 1394 camera and QCapture Pro visualisation program. After 5 days the embryos were trypsinised off the 96-well plate and genotyped via conventional PCR described above. 2.5dpc embryos were pooled together and grown *in vitro* using M2 medium for 2 days. At the end of the two days each embryo was separated and genotyped using conventional PCR.

Immunoblotting

Western Blot analysis was performed as described previously with antibody A301-228A (Bethyl) against BRF1 [17].

PCR and gel electrophoresis

PCR was conducted using TAQ polymerase from Invitrogen (1034020) as per manufacturer's instructions. DNA for reactions was isolated from pancreatic tumours using the QiaAmp DNA Blood Mini Kit (Qiagen) as per manufacturer's instructions. 0.1 ng of DNA was used in each reaction together with a combination of 0.5 mM oligo1 and either oligo 2 or oligo 3 primers, as per figure legend, and 0.5 mM β -actin primers as control. A Bio-Rad DNA Engine DYAD Thermal Cycler was used with the following cycling parameters 95 °C 10 min, 25 cycles of 95 °C 30 s, 60 °C 30 s, 72 °C 30 s and 72 °C 10 min. Samples were loaded in a polyacrylamide gel and visualised with Sybr Safe as per manufacturer's instructions using a Gene Genius Bioimaging system with a Syngene GeneSnap visualisation program.

Quantitative real-time PCR

Quantitative real time PCR was performed using PerfeCTa SYBR Green FastMix (Quanta BioSciences) according to the manufacturer's protocol. Analysis was performed on the C1000 Thermocycler CFX96 Real Time System (Bio-Rad). Relative quantification was determined from a standard curve using the Bio-Rad CFXManager software (Version 1.5.534.011). Primers used are described in Supplemental Table 1. For each reaction 0.5 mM of forward and reverse primer mixture was used. Three step PCR cycling parameters were used in all reactions as follows 95 °C for

15 min, 35 cycles of 95 °C for 10 s, 60 °C 10 s and 72 °C for 10 s followed by a melting curve.

Polysome profiling

To generate tissue for polysomal profile analysis, the whole liver of the mouse was perfused with 0.1 mg/ml cycloheximide (Sigma) in PBS and incubated with 0.1 mg/ml cycloheximide in HBSS (Gibco) with 10 mM EDTA for 5 min at 37 °C. Livers were cut into small pieces and used for downstream analysis.

Liver pieces were lysed in ice cold 300 mM NaCl, 15 mM MgCl₂, 15 mM Tris (pH 7.5) containing 500 units/ml RNAsin, 1 mg/ml heparin sulphate and 0.1 mg/ml cycloheximide supplemented with 0.1% (v/v) Triton X-100. Post-nuclear lysates were layered on ~10 ml 10–50% (w/v) sucrose gradients of the same buffer omitting Triton X-100. Gradients were centrifuged at 38,000 rpm for 3 h at 4 °C in a SW40Ti rotor (Beckman Coulter) and separated through a live OD254nm UV spectrometer (Isco).

Blood analysis

Blood was collected via heart puncture immediately upon euthanizing the animal. Blood samples were processed for a full liver profile using an Olympus Au640 (Beckman Coulter) as per manufacturer instructions.

Acknowledgements We thank Professor Robert White for discussions that instigated this project. This work was funded by Cancer Research UK grants: A10419, A17196, A12481, A21139, A11650. JRPK and OJS were also funded by an ERC Starting Grant (ColonCan – 311301). KJC was funded by the Royal Society Dorothy Hodgkin Fellowship (DH100099). TGB. was funded by Wellcome Trust (WT107492Z). CJ, KD and AEW were funded by an MRC programme grant.

Compliance with ethical standards

Conflict of interest The authors declare that they have no conflict of interest.

Publisher's note: Springer Nature remains neutral with regard to jurisdictional claims in published maps and institutional affiliations.

Open Access This article is licensed under a Creative Commons Attribution 4.0 International License, which permits use, sharing, adaptation, distribution and reproduction in any medium or format, as long as you give appropriate credit to the original author(s) and the source, provide a link to the Creative Commons license, and indicate if changes were made. The images or other third party material in this article are included in the article's Creative Commons license, unless indicated otherwise in a credit line to the material. If material is not included in the article's Creative Commons license and your intended use is not permitted by statutory regulation or exceeds the permitted use, you will need to obtain permission directly from the copyright holder. To view a copy of this license, visit <http://creativecommons.org/licenses/by/4.0/>.

References

1. Dieci G, Fiorino G, Castelnuovo M, Teichmann M, Pagano A. The expanding RNA polymerase III transcriptome. *Trends Genet.* 2007;23:614–22.
2. Cramer P. Recent structural studies of RNA polymerases II and III. *Biochem Soc Trans.* 2006;34(Pt 6):1058–61.
3. Geiduschek EP, Kassavetis GA. The RNA polymerase III transcription apparatus. *J Mol Biol.* 2001;310:1–26.
4. White RJ. RNA Polymerase III Transcription. Landes Bioscience: Austin; 2002.
5. Abascal-Palacios G, Ramsay EP, Beuron F, Morris E, Vannini A. Structural basis of RNA polymerase III transcription initiation. *Nature.* 2018;553:301.
6. Vorländer MK, Khatter H, Wetzel R, Hagen WJH, Müller CW. Molecular mechanism of promoter opening by RNA polymerase III. *Nature.* 2018;553:295.
7. Orioli A, Pascali C, Pagano A, Teichmann M, Dieci G. RNA polymerase III transcription control elements: themes and variations. *Gene.* 2012;493:185–94.
8. Schramm L, Hernandez N. Recruitment of RNA polymerase III to its target promoters. *Genes Dev.* 2002;16:2593–620.
9. Kassavetis GA, Braun BR, Nguyen LH, Geiduschek EP. *S. cerevisiae* TFIIB is the transcription initiation factor proper of RNA polymerase III, while TFIIA and TFIIC are assembly factors. *Cell.* 1990;60:235–45.
10. Kassavetis GA, Letts GA, Geiduschek EP. The RNA polymerase III transcription initiation factor TFIIB participates in two steps of promoter opening. *EMBO J.* 2001;20:2823–34.
11. Werner M, Chaussivert N, Willis IM, Sentenac A. Interaction between a complex of RNA polymerase III subunits and the 70-kDa component of transcription factor IIIB. *J Biol Chem.* 1993;268:20721–4.
12. Fernandez-Tornero C, Bottcher B, Rashid UJ, Steuerwald U, Florchinger B, Devos DP, et al. Conformational flexibility of RNA polymerase III during transcriptional elongation. *EMBO J.* 2010;29:3762–72.
13. Teichmann M, Wang Z, Roeder RG. A stable complex of a novel transcription factor IIB-related factor, human TFIIB50, and associated proteins mediate selective transcription by RNA polymerase III of genes with upstream promoter elements. *Proc Natl Acad Sci USA.* 2000;97:14200–5.
14. Schramm L, Pendergrast PS, Sun Y, Hernandez N. Different human TFIIB activities direct RNA polymerase III transcription from TATA-containing and TATA-less promoters. *Genes Dev.* 2000;14:2650–63.
15. Moir RD, Willis IM. Regulation of Pol-III transcription by nutrient and stress signaling pathways. *Biochim Biophys Acta.* 2013;1829:361–75.
16. White RJ. RNA polymerases I and III, non-coding RNAs and cancer. *Trends Genet.* 2008;24:622–9.
17. Fairley JA, Mitchell LE, Berg T, Kenneth NS, von Schubert C, Sillje HH, et al. Direct regulation of tRNA and 5S rRNA gene transcription by Polo-like kinase 1. *Mol Cell.* 2013;45:541–52.
18. Gomez-Roman N, Grandori C, Eisenman RN, White RJ. Direct activation of RNA polymerase III transcription by c-Myc. *Nature.* 2003;421:290–4.
19. Kenneth NS, Ramsbottom BA, Gomez-Roman N, Marshall L, Cole PA, White RJ. TRRAP and GCN5 are used by c-Myc to activate RNA polymerase III transcription. *Proc Natl Acad Sci USA.* 2007;104:14917–22.
20. Larminie CG, Cairns CA, Mital R, Martin K, Kouzarides T, Jackson SP, et al. Mechanistic analysis of RNA polymerase III regulation by the retinoblastoma protein. *EMBO J.* 1997;16:2061–71.
21. Sutcliffe JE, Cairns CA, McLees A, Allison SJ, Tosh K, White RJ. RNA polymerase III transcription factor IIIB is a target for repression by pocket proteins p107 and p130. *Mol Cell Biol.* 1999;19:4255–61.
22. White RJ. RNA polymerase III transcription and cancer. *Oncogene.* 2004;23:3208–16.
23. Woiwode A, Johnson SA, Zhong S, Zhang C, Roeder RG, Teichmann M, et al. PTEN represses RNA polymerase III-dependent transcription by targeting the TFIIB complex. *Mol Cell Biol.* 2008;28:4204–14.
24. Crighton D, Woiwode A, Zhang C, Mandavia N, Morton JP, Warnock LJ, et al. p53 represses RNA polymerase III transcription by targeting TBP and inhibiting promoter occupancy by TFIIB. *EMBO J.* 2003;22:2810–20.
25. White RJ, Trouche D, Martin K, Jackson SP, Kouzarides T. Repression of RNA polymerase III transcription by the retinoblastoma protein. *Nature.* 1996;382:88–90.
26. Athineos D, Marshall L, White RJ. Regulation of TFIIB during F9 cell differentiation. *BMC Mol Biol.* 2010;11:21.
27. Goodfellow SJ, Innes F, Derblay LE, MacLellan WR, Scott PH, White RJ. Regulation of RNA polymerase III transcription during hypertrophic growth. *EMBO J.* 2006;25:1522–33.
28. Yee NS, Gong W, Huang Y, Lorent K, Dolan AC, Maraia RJ, et al. Mutation of RNA Pol-III subunit *rpc2/polr3b* Leads to Deficiency of Subunit *Rpc11* and disrupts zebrafish digestive development. *PLoS Biol.* 2007;5:e312.
29. Marshall L, Rideout EJ, Grewal SS. Nutrient/TOR-dependent regulation of RNA polymerase III controls tissue and organismal growth in *Drosophila*. *EMBO J.* 2012;31:1916–30.
30. Rideout EJ, Marshall L, Grewal SS. *Drosophila* RNA polymerase III repressor *Maf1* controls body size and developmental timing by modulating tRNAiMet synthesis and systemic insulin signaling. *Proc Natl Acad Sci USA.* 2012;109:1139–44.
31. Bosl MR, Takaku K, Oshima M, Nishimura S, Taketo MM. Early embryonic lethality caused by targeted disruption of the mouse selenocysteine tRNA gene (*Trsp*). *Proc Natl Acad Sci USA.* 1997;94:5531–4.
32. Fairley JA, Kantidakis T, Kenneth NS, Intine RV, Maraia RJ, White RJ. Human La is found at RNA polymerase III-transcribed genes in vivo. *Proc Natl Acad Sci USA.* 2005;102:18350–5.
33. Park JM, Kohn MJ, Bruinsma MW, Vech C, Intine RV, Fuhrmann S, et al. The multifunctional RNA-binding protein La is required for mouse development and for the establishment of embryonic stem cells. *Mol Cell Biol.* 2006;26:1445–51.
34. Wolin SL, Cedervall T. The La protein. *Annu Rev Biochem.* 2002;71:375–403.
35. Copp AJ. Death before birth: clues from gene knockouts and mutations. *Trends Genet.* 1995;11:87–93.
36. Takaoka K, Hamada H. Cell fate decisions and axis determination in the early mouse embryo. *Development.* 2012;139:3–14.
37. Chen W, Bocker W, Brosius J, Tiedge H. Expression of neural BC200 RNA in human tumours. *J Pathol.* 1997;183:345–51.
38. Pavon-Eternod M, Gomes S, Geslain R, Dai Q, Rosner MR, Pan T. tRNA over-expression in breast cancer and functional consequences. *Nucleic Acids Res.* 2009;37:7268–80.
39. Winter AG, Sourvinos G, Allison SJ, Tosh K, Scott PH, Spandidos DA, et al. RNA polymerase III transcription factor TFIIC2 is overexpressed in ovarian tumors. *Proc Natl Acad Sci USA.* 2000;97:12619–24.
40. Bloom-Ackermann Z, Navon S, Gingold H, Towers R, Pilpel Y, Dahan O. A comprehensive tRNA deletion library unravels the genetic architecture of the tRNA pool. *PLoS Genet.* 2014;10:e1004084.
41. Pavon-Eternod M, Gomes S, Rosner MR, Pan T. Overexpression of initiator methionine tRNA leads to global reprogramming of

- tRNA expression and increased proliferation in human epithelial cells. *RNA*. 2013;19:461–6.
42. Johnson SA, Dubeau L, Johnson DL. Enhanced RNA polymerase III-dependent transcription is required for oncogenic transformation. *J Biol Chem*. 2008;283:19184–91.
 43. Zhong Q, Xi S, Liang J, Shi G, Huang Y, Zhang Y, et al. The significance of Brf1 overexpression in human hepatocellular carcinoma. *Oncotarget*. 2016;7:6243–54.
 44. Birch J, Clarke CJ, Campbell AD, Campbell K, Mitchell L, Liko D, et al. The initiator methionine tRNA drives cell migration and invasion leading to increased metastatic potential in melanoma. *Biol Open*. 2016;5:1371–9.
 45. Clarke CJ, Berg TJ, Birch J, Ennis D, Mitchell L, Cloix C, et al. The initiator methionine tRNA drives secretion of type II collagen from stromal fibroblasts to promote tumor growth and angiogenesis. *Curr Biol*. 2016;26:755–65.
 46. Schwenk F, Baron U, Rajewsky K. A cre-transgenic mouse strain for the ubiquitous deletion of loxP-flanked gene segments including deletion in germ cells. *Nucleic Acids Res*. 1995;23:5080–1.
 47. Saiz N, Plusa B. Early cell fate decisions in the mouse embryo. *Reproduction*. 2013;145:R65–80.
 48. Ireland H, Kemp R, Houghton C, Howard L, Clarke AR, Sansom OJ, et al. Inducible Cre-mediated control of gene expression in the murine gastrointestinal tract: effect of loss of beta-catenin. *Gastroenterology*. 2004;126:1236–46.
 49. Matthews JR, Sansom OJ, Clarke AR. Absolute requirement for STAT3 function in small-intestine crypt stem cell survival. *Cell Death Differ*. 2011;18:1934–43.
 50. Heijmans J, van Lidth de Jeude Joeske F, Koo B-K, Rosekrans Sanne L, Wielenga Mattheus CB, van de Wetering M, et al. ER stress causes rapid loss of intestinal epithelial stemness through activation of the unfolded protein response. *Cell Rep*. 2013;3:1128–39.
 51. Athineos D, Sansom OJ. Myc heterozygosity attenuates the phenotypes of APC deficiency in the small intestine. *Oncogene*. 2010;29:2585–90.
 52. Walz S, Lorenzin F, Morton J, Wiese KE, von Eyss B, Herold S, et al. Activation and repression by oncogenic MYC shape tumour-specific gene expression profiles. *Nature*. 2014;511:483.
 53. Hingorani SR, Wang L, Multani AS, Combs C, Deramautd TB, Hruban RH, et al. Trp53R172H and KrasG12D cooperate to promote chromosomal instability and widely metastatic pancreatic ductal adenocarcinoma in mice. *Cancer Cell*. 2005;7:469–83.
 54. Felton-Edkins ZA, Fairley JA, Graham EL, Johnston IM, White RJ, Scott PH. The mitogen-activated protein (MAP) kinase ERK induces tRNA synthesis by phosphorylating TFIIB. *EMBO J*. 2003;22:2422–32.
 55. Morton JP, Timpson P, Karim SA, Ridgway RA, Athineos D, Doyle B, et al. Mutant p53 drives metastasis and overcomes growth arrest/senescence in pancreatic cancer. *Proc Natl Acad Sci USA*. 2010;107:246–51.
 56. Srikanthadevan-Pirahas S, Deshpande R, Lee B, Grewal SS. Ras/ERK-signalling promotes tRNA synthesis and growth via the RNA polymerase III repressor Maf1 in *Drosophila*. *PLoS Genet*. 2018;14:e1007202.
 57. Versteegh LR, Hearn TF, Warner CM. Variations in the amounts of RNA polymerase forms I, II and III during preimplantation development in the mouse. *Dev Biol*. 1975;46:430–5.
 58. Spriggs KA, Bushell M, Willis AE. Translational regulation of gene expression during conditions of cell stress. *Mol Cell*. 2010;40:228–37.
 59. Hay T, Patrick T, Winton D, Sansom OJ, Clarke AR. Brca2 deficiency in the murine small intestine sensitizes to p53-dependent apoptosis and leads to the spontaneous deletion of stem cells. *Oncogene*. 2005;24:3842–6.
 60. Vitale I, Galluzzi L, Vivet S, Nanty L, Dessen P, Senovilla L, et al. Inhibition of Chk1 kills tetraploid tumor cells through a p53-dependent pathway. *PLoS ONE* 2007;2:e1337.
 61. Lopez-Garcia C, Klein AM, Simons BD, Winton DJ. Intestinal stem cell replacement follows a pattern of neutral drift. *Science*. 2011;330:822–5.
 62. Snippet HJ, van der Flier LG, Sato T, van Es JH, van den Born M, Kroon-Veenboer C, et al. Intestinal crypt homeostasis results from neutral competition between symmetrically dividing Lgr5 stem cells. *Cell*. 2010;143:134–44.
 63. Michalopoulos GK. Liver regeneration after partial hepatectomy: critical analysis of mechanistic dilemmas. *Am J Pathol*. 2010;176:2–13.
 64. Lu W-Y, Bird TG, Boulter L, Tsuchiya A, Cole AM, Hay T, et al. Hepatic progenitor cells of biliary origin with liver repopulation capacity. *Nat Cell Biol*. 2015;17:971.
 65. Park JL, Lee YS, Song MJ, Hong SH, Ahn JH, Seo EH, et al. Epigenetic regulation of RNA polymerase III transcription in early breast tumorigenesis. *Oncogene*. 2017;36:6793.
 66. Bellido F, Sowada N, Mur P, Lázaro C, Pons T, Valdés-Mas R, et al. Association between germline mutations in BRF1, a subunit of the RNA polymerase III transcription complex, and hereditary colorectal cancer. *Gastroenterology*. 2018;154:181–194.e120.
 67. Fang Z, Yi Y, Shi G, Li S, Chen S, Lin Y, et al. Role of Brf1 interaction with ER α , and significance of its overexpression, in human breast cancer. *Mol Oncol*. 2017;11:1752–67.
 68. Bywater Megan J, Poortinga G, Sanij E, Hein N, Peck A, Cullinane C, et al. Inhibition of RNA polymerase I as a therapeutic strategy to promote cancer-specific activation of p53. *Cancer Cell*. 2012;22:51–65.
 69. Hingorani SR, Petricoin EF, Maitra A, Rajapakse V, King C, Jacobetz MA, et al. Preinvasive and invasive ductal pancreatic cancer and its early detection in the mouse. *Cancer Cell*. 2003;4:437–50.
 70. Yanger K, Zong Y, Maggs LR, Shapira SN, Maddipati R, Aiello NM, et al. Robust cellular reprogramming occurs spontaneously during liver regeneration. *Genes & Dev*. 2013;27:719–24.
 71. Bronson SK, Plaehn EG, Kluckman KD, Hagaman JR, Maeda N, Smithies O. Single-copy transgenic mice with chosen-site integration. *Proc Natl Acad Sci USA*. 1996;93:9067–72.
 72. Schachtner H, Li A, Stevenson D, Calaminus SDJ, Thomas S, Watson SP, et al. Tissue inducible Lifeact expression allows visualization of actin dynamics in vivo and ex vivo. *Eur J Cell Biol*. 2012;91:923–9.
 73. Magin TM, McWhir J, Melton DW. A new mouse embryonic stem cell line with good germ line contribution and gene targeting frequency. *Nucleic Acids Res*. 1992;20:3795–6.
 74. Tucker KL, Wang Y, Dausman J, Jaenisch R. A transgenic mouse strain expressing four drug-selectable marker genes. *Nucleic Acids Res*. 1997;25:3745–6.
 75. Nagy A, Gertsenstein, M, Vintersten, K, Behringer, R. *Manipulating the mouse embryo: A laboratory manual*, 3rd edn. Cold Spring Harbor Laboratory: Cold Spring Harbor; 2003.
 76. Sansom OJ, Reed KR, Hayes AJ, Ireland H, Brinkmann H, Newton IP, et al. Loss of Apc in vivo immediately perturbs Wnt signaling, differentiation, and migration. *Genes Dev*. 2004;18:1385–90.