

Altered Resting-State Network Connectivity in Congenital Blind

Dawei Wang,¹ Wen Qin,¹ Yong Liu,² Yunting Zhang,¹ Tianzi Jiang,^{2*} and Chunshui Yu^{1,3*}

¹Department of Radiology and Tianjin Key Laboratory of Functional Imaging, Tianjin Medical University General Hospital, Tianjin 300052, China

²Brainnetome Center, National Laboratory of Pattern Recognition, Institute of Automation, Chinese Academy of Sciences, Beijing 100190, China

³School of Medical Imaging, Tianjin Medical University, Tianjin 300052, China

Abstract: The brain of congenital blind (CB) has experienced a series of structural and functional alterations, either undesirable outcomes such as atrophy of the visual pathway due to sight loss from birth, or compensatory plasticity to interact efficiently with the environment. However, little is known, so far, about alterations in the functional architecture of resting-state networks (RSNs) in CB. This study aimed to investigate intra- and internetwork connectivity differences between CB and sighted controls (SC), using independent component analysis (ICA) on resting state functional MRI data. Compared with SC, CB showed significantly increased network connectivity within the salience network (SN) and the occipital cortex. Moreover, CB exhibited enhanced internetwork connectivity between the SN and the frontoparietal network (FPN) and between the FPN and the occipital cortex; however, they showed decreased internetwork connectivity between the occipital cortex and the sensorimotor network. These findings suggest that CB experience large scale reorganization at the level of the functional network. More importantly, the enhanced intra- and internetwork connectivity of the SN, FPN, and occipital cortex in CB may improve their abilities to identify salient stimuli, to initiate the executive function, and to top-down control of attention, which are critical for the CB to guide appropriate behavior and to better adaption to the environment. *Hum Brain Mapp* 35:2573–2581, 2014. © 2013 Wiley Periodicals, Inc.

Key words: congenital blind; resting-state network; MRI; independent component analysis

Additional Supporting Information may be found in the online version of this article.

Contract grant sponsor: National Basic Research Program of China (973 program); Contract grant number: 2011CB707800; Contract grant sponsor: Natural Science Foundation of China; Contract grant numbers: 30870694, 30900476, 81270020, Contract grant sponsor: Graduate Innovation Foundation of Tianjin Medical University; Contract grant number: 2010GSI10; Contract grant sponsor: Open Projects Program of National Laboratory of Pattern Recognition.

D.W., W.Q., and Y.L. contributed equally to this work.

*Correspondence to: Chunshui Yu, Department of Radiology, Tianjin Medical University General Hospital, No. 154, Anshan Road, Heping District, Tianjin 300052, China. E-mail: chunshuiyu@tjmu.edu.cn or Tianzi Jiang, Brainnetome Center, National Laboratory of Pattern Recognition, Institute of Automation, Chinese Academy of Sciences, Beijing 100190, China. E-mail: jiangtz@nlpr.ia.ac.cn

Received for publication 26 November 2012; Revised 7 May 2013; Accepted 28 May 2013.

DOI: 10.1002/hbm.22350

Published online 3 September 2013 in Wiley Online Library (wileyonlinelibrary.com).

INTRODUCTION

Congenital blind (CB) lost their sight from birth and they have to make major adjustments to interact effectively with the environment. The occipital cortex that serves processing of visual information in sighted controls (SC) has experienced a series of structural and functional alterations in CB, including decreased gray/white matter volume (Bridge et al., 2009; Lepore et al., 2010; Ptito et al., 2008) and white matter integrity (Shimony et al., 2006), increased cortical thickness (Jiang et al., 2009; Park et al., 2009), regional brain activity as measured by regional homogeneity (ReHo) (Liu et al., 2011), and glucose metabolism as measured by positron emission tomography (PET) (Veraart et al., 1990). Interestingly, task-based functional MRI (fMRI) has revealed that the occipital cortex of the early blind shifts its function to process tactile (Burton et al., 2006) and auditory information (Poirier et al., 2006) and to engage in many higher-level cognitive functions (Amedi et al., 2003; Burton and McLaren, 2006), although preserved functional organization has been found in several higher-tier visual areas (Reich et al., 2011; Ricciardi et al., 2007). Beyond the occipital cortex, several other brain areas also show alterations, such as increased white matter volume underlying the sensorimotor cortex (Noppeney et al., 2005), increased white matter integrity in the corticospinal tract (Yu et al., 2007), as well as the increase of the corticocortical (Kupers et al., 2006), thalamocortical (Karlen et al., 2006) and intracortical (Callaway and Katz, 1991) connections. These findings suggest that early visual deprivation results in widely distributed structural and functional changes in the brain rather than the dysfunction of a single brain area.

Traditionally, resting-state functional connectivity (rsFC) focused upon constructing cross-correlation maps of the chosen seed regions of interest with the other brain regions, which reflects the temporal coherence of low frequency fluctuations of BOLD signals between every two spatially remote brain areas (Biswal et al., 1995; Biswal et al., 1997; Cordes et al., 2002). It has been used to investigate the functional changes in early blind individuals, and found decreased rsFC between occipital and sensorimotor areas and increased rsFC between occipital and frontal areas (Liu et al., 2007; Yu et al., 2008). Although this approach can find altered rsFC between two brain areas, it cannot answer how the intra- and inter-network connectivity is altered in the brain. Thus, a better understanding of the neurobiology of congenital blindness would require investigations at the level of the brain network.

During resting-state, it has been suggested that the brain is organized into multiple resting-state networks (RSNs) (Damoiseaux et al., 2006; De Luca et al., 2006), which can be identified by independent component analysis (ICA) on resting state fMRI data. Investigations on the intra- and inter-network connectivity have largely improved our understanding on the large scale functional organization in normal and abnormal brains (Buckner and Vincent,

TABLE I. Demographic information and head motion of participants

	CB	SC	<i>P</i> value
Number of subjects	37	75	
Age (years)	24.5 (4.9)	27.8 (7.6)	0.017
Sex (male/female)	23/14	52/23	0.45
FD	0.15(0.07)	0.15(0.06)	0.77

The data are shown as the means (SD); CB, congenital blind; FD, framewise displacement; SC, sighted control.

2007; Fox and Raichle, 2007; Greicius et al., 2004). However, little is known, so far, about alterations in the functional connectivity within and between RSNs in CB. We hypothesize that the intra-network FCs may be altered at least in the VN in the CB because of the altered structural and functional characteristics of the occipital cortex in the CB (Bridge et al., 2009; Jiang et al., 2009; Lepore et al., 2010; Park et al., 2009; Ptito et al., 2008; Shimony et al., 2006; Veraart et al., 1990). We also hypothesize that the VN-related inter-network FCs may be altered in the CB because the altered rsFCs have been reported between the visual cortex and brain regions belonging to other RSNs in the CB (Liu et al., 2007; Yu et al., 2008). This kind of study will largely improve our understanding on the impairment and compensatory plasticity in CB at the level of the large scale functional network. In the present study, we used an ICA-based RSN analysis to test the hypothesis that both intra- and inter-network functional connectivity are altered in CB.

MATERIALS AND METHODS

Subjects

Thirty seven CB and 76 sighted controls (SC) participated in this experiment after giving written informed consent in accordance with the Medical Research Ethics Committee of Tianjin Medical University. One sighted subject was excluded due to excessive head motion; thus 37 CB (23 males, mean age 24.5 ± 4.9 years) and 75 SC (52 males, mean age 27.8 ± 7.6 years) were finally included. There was significant group difference in age [$T(110) = -2.43$, $P = 0.017$], but not in gender [$\chi^2(1) = 0.58$, $P = 0.45$] (Table I). All CB subjects had lost their sight since birth, and 20 of them had weak light perception (Table II). None of the CB subjects had a history of normal vision, and none had memories of visual experience.

MRI Data Acquisition

MRI data were obtained using a 3.0-Tesla MR scanner (Trio Tim system; Siemens, Erlangen, Germany) with a 12-channel head coil. Tight but comfortable foam padding was used to minimize head movement, and earplugs were

TABLE II. Demographic information of congenital blind subjects

Subjects	Gender	Age (years)	Light perception	Causes of blindness
CB001	M	28	Weak	Retinal dysplasia
CB002	F	28	Weak	Retinal pigmentosa
CB003	F	27	None	Optic nerve atrophy
CB004	M	23	Weak	Fundus oculi illness
CB005	M	24	None	Eyeball dysplasia
CB006	F	27	Weak	Retinal pigmentosa
CB007	F	20	None	Unknown
CB008	M	22	None	Retinal dystrophia
CB009	M	30	Weak	Congenital cataract
CB010	M	22	Weak	Congenital cataract
CB011	M	27	None	Optic nerve atrophy
CB012	F	20	None	Microphthalmus
CB013	M	23	Weak	Unknown
CB014	M	39	None	Microphthalmus
CB015	M	36	Weak	Hypoplasia of fundus oculi
CB016	M	29	Weak	Unknown
CB017	F	21	Weak	Hypoplasia of fundus oculi
CB018	M	31	Weak	Congenital microphthalmus
CB019 ^a	F	27	None	Hypoplasia of fundus oculi
CB020	F	27	None	Congenital cataract
CB021	M	28	None	Hypoplasia of fundus oculi
CB022	F	23	None	Retinitis pigmentosa
CB023	M	21	None	Retinitis pigmentosa
CB024	M	21	None	Optic nerve atrophy
CB025	M	25	None	Optic nerve atrophy
CB026	M	19	Weak	Retinitis pigmentosa
CB027	M	25	Weak	Retinitis pigmentosa
CB028	F	24	Weak	Optic hypoplasia
CB029	M	22	None	Congenital glaucoma
CB030	M	29	None	Optic nerve hypoplasia
CB031	M	23	None	Congenital glaucoma
CB032	F	27	Weak	Optic nerve atrophy
CB033	F	16	Weak	Optic nerve atrophy
CB034	F	18	Weak	Retinitis pigmentosa
CB035	F	22	None	Congenital cataract
CB036	F	22	Weak	Congenital glaucoma
CB037 ^a	M	21	Weak	Congenital glaucoma
CB038	M	19	None	Optic nerve hypoplasia
CB039	M	19	None	Retrolental fibroplasia

^aThese two CB subjects were excluded from rest-state functional connectivity analysis for excessive head motion. CB, congenital blind.

used to reduce scanner noise. The resting-state fMRI data were obtained with a gradient-echo echo-planar imaging (GRE-EPI) sequence. The acquisition parameters included: TR/TE = 2,000/30 ms, flip angle = 90°, matrix = 64 × 64, FOV = 220 mm × 220 mm, 32 axial slices with a 3-mm slice thickness and a 1-mm gap. The fMRI data was scanned for 6 minutes with each functional run of 180 continuous volumes. During the fMRI scans, all subjects were instructed to keep their eyes closed, to stay as still as possible, to think of nothing in particular and to not fall asleep.

Data Preprocessing

The resting-state fMRI data were preprocessed using Statistical Parametric Mapping (SPM8, <http://www.fil.ion.ucl.ac.uk/spm>). The first 10 volumes of each functional time series were discarded due to the signals reaching equilibrium and the participants adapting to the scanning noise. The remaining 170 vol were corrected for the acquisition time delay between different slices and realigned to the first volume. Head movement parameters were computed by estimating the translation in each direction and the angular rotation on each axis for each volume and the translational or rotational parameters of all subjects were within 2 mm or 2 degrees. Considering that small amounts of head motion from volume to volume could influence the functional connectivity results (Power et al., 2012a), we also calculated framewise displacement (FD), which indexes volume-to-volume changes in head position. The FD was obtained from the derivatives of the rigid body realignment estimates that are used to realign fMRI data (Power et al., 2012a). We checked the FD of every subject and found one sighted subject with a FD of > 0.5. This subject was then excluded from further analyses. Although there were no significant ($P = 0.77$) differences in FD between the CB and SC groups (Table I), we still used the mean FD of each subject as a nuisance covariate in the following analyses. Following this step, each image was normalized with the Montreal Neurological Institute (MNI) EPI template image and resampled to 3-mm cubic voxels; The normalized fMRI data were smoothed with 6-mm full width at half maximum (FWHM). We also used a linear regression process for further regressing out the linear drift.

Independent Component Analysis

The ICA was performed employing a group ICA model for fMRI data (GIFT) (<http://icatb.sourceforge.net/>, version 1.3h) with three distinct stages: (i) data reduction, (ii) application of the ICA algorithm, and (iii) back reconstruction for each individual subject (Calhoun et al., 2001; Schmithorst and Holland, 2004). A three-step principal component analysis (PCA) was used to decompose the data set into 30 components. Subsequently, the Informax algorithm (Bell and Sejnowski, 1995) was used in IC estimation. In the back reconstruction step, the group ICA 3 (GICA3) approach, which has been shown to be a test-retest reliable method to explore ICs (Erhardt et al., 2011), was used to back-reconstruct the individual subject components. After back-reconstruction, the IC time-courses and spatial maps for each participant were acquired and the subject-specific spatial maps were transformed to z scores. Upon visual inspection, eleven meaningful components were identified and represented functionally relevant RSNs as described previously (Beckmann et al., 2005, 2009; Beckmann and Smith, 2005; Damoiseaux et al., 2006; De Luca et al., 2006; Mantini et al., 2007). IC patterns

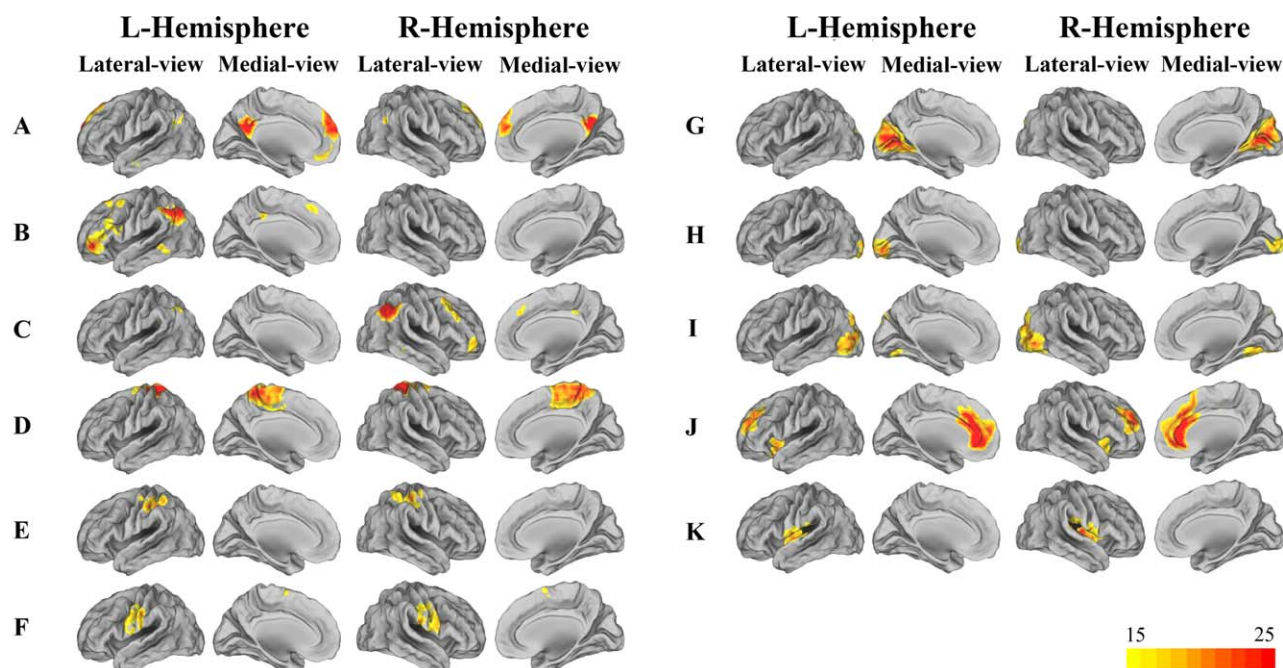


Figure 1.

Cortical representation of brain networks identified in an independent component analysis. **(A)** Default-mode network (DMN); **(B)** Left frontoparietal networks (LFPN); **(C)** Right frontoparietal networks (RFPN); **(D–F)** sensorimotor network (SMN); **(G–I)** Visual network (VN); **(J)** Saliency network (SN);

(K) Audio network (AN). Color bar represents the t values ranging from 15 to 25. Data are displayed on the lateral, medial surfaces of each hemisphere. [Color figure can be viewed in the online issue, which is available at wileyonlinelibrary.com.]

representing RSNs were entered into a random-effect one-sample t test in SPM8. To improve the representativeness of each RSN, we used $t > 15$ to select voxels of a component. Then, a two-sample t test was used to compare the synchronization differences within each network between the CB and SC with FD, gender and age as nuisance covariates. Multiple comparisons were corrected using a false discovery rate (FDR) method with a statistical threshold of $q < 0.05$ and a cluster size of >15 voxels.

Analyses of the Functional Network Connectivity

In spatial aspect, the ICs are maximally independent, however; in temporal aspect the time courses are not independent and can exhibit considerable temporal dependencies which are significant among components. In contrast to functional connectivity analysis that focused on the correlation between a single seed region and the other brain regions, we focused upon the temporal correlation among different RSNs estimated from ICA. The time-courses of each RSN were extracted from the ICA procedure, which was then normalized with Fisher r -to- z transformation. Then, the time-courses of each pair of the 11 RSNs were used to calculate the temporal correlation, namely functional network connectivity (FNC). A two-sample t test

was used to compare group differences in the FNCs with a threshold of $P < 0.005$ (uncorrected).

RESULTS

Resting-State Networks

A total of 30 components were estimated by the ICA. Eleven of these components coincided with RSNs described in previous studies (Beckmann et al., 2005, 2009; Beckmann and Smith, 2005; Damoiseaux et al., 2006; De Luca et al., 2006; Mantini et al., 2007). These 11 RSNs are shown in Figure 1. The default mode network (DMN) was mainly composed of the posterior cingulate cortex and precuneus (PCC/Pcu), the medial prefrontal and anterior cingulate cortices (MPFC/ACC), and the bilateral lateral parietal cortices (LPC) (Buckner et al., 2008; Fox et al., 2005; Greicius et al., 2004; Raichle et al., 2001) (Fig. 1A). The left and right frontoparietal networks (FPN) are shown in Figure 1B,C, whose key nodes consisted of the dorsolateral prefrontal cortex (DLPFC) and posterior parietal cortex (PPC). Figure 1D–F show the sensorimotor network (SMN) including the bilateral precentral and postcentral gyri, and supplementary motor areas. Figure 1G–I correspond to the striate part (VN₁), ventral part (VN₂), and dorsal part (VN₃) of the visual network (VN),

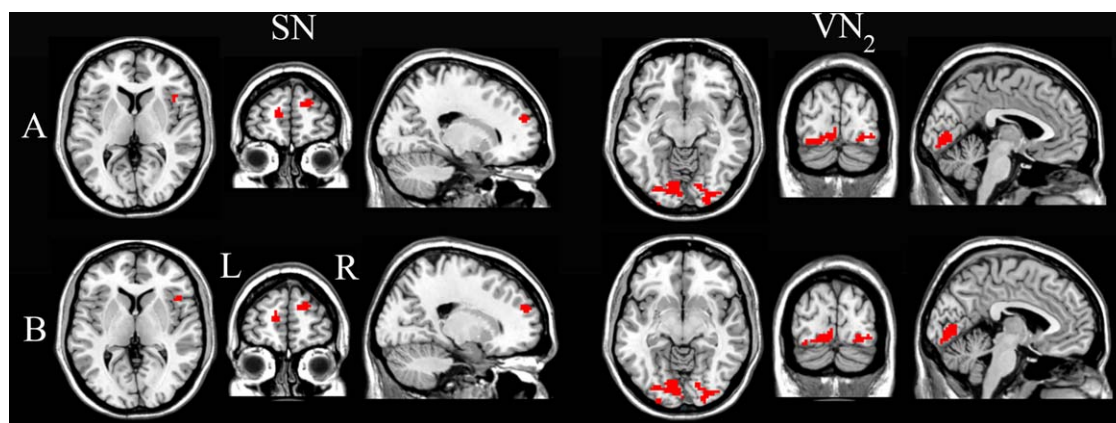


Figure 2.

Brain regions with significant differences between the CB and SC in the intra-network connectivity with (A) and without (B) removing the effect of age. Compared with SC, CB showed a significantly increased synchronization in the right anterior insula and bilateral ventral-lateral prefrontal regions of the SN, as well

as in the inferior and ventral parts of the occipital cortex bilaterally ($q < 0.05$, FDR corrected, cluster size > 15 voxels). L, left; R, right; SN, salience network; VN₂, ventral part of the visual network. [Color figure can be viewed in the online issue, which is available at wileyonlinelibrary.com.]

respectively. The salience network (SN) includes the bilateral ventrolateral prefrontal cortex (VLPFC), anterior insula (AI), and the dorsal anterior cingulate cortex (dACC) (Beckmann et al., 2005; Fox et al., 2006; Greicius et al., 2003; Seeley et al., 2007) (Fig. 1J). The auditory network (AN) primarily includes the bilateral superior temporal cortex (Fig. 1K).

Altered Synchronization of RSN in CB

After regressing out the effects of FD, gender and age, in the SN, compared with SC, CB showed a significantly increased synchronization in the right fronto-insular cortex (FIC; peak MNI coordinates: $x = 45, y = 21, z = 6$) and the bilateral ventrolateral prefrontal regions (left: $x = -12, y = 57, z = 12$; right: $x = 18, y = 57, z = 24$) ($q < 0.05$, FDR corrected) (Fig. 2A). Moreover, CB also showed significantly increased synchronization in the ventral part of the VN bilaterally ($x = -9, y = -84, z = -9$) ($q < 0.05$, FDR corrected) (Fig. 2A). No brain regions showed a significant decrease in synchronization in the SN or VN in the CB group relative to the SC group. There are no significant group differences ($q < 0.05$, FDR corrected) in the synchronization of the remaining RSNs. To investigate whether weak light perception affected the rsFC analysis results, we also compared the rsFCs between CB subjects with and without light perception. There was no significant group difference even using an uncorrected $P < 0.05$.

It should be noted that the above statistical analysis was based on a hypothesis that the rsFC has a linear relationship with age. However, the linear hypothesis lacks strong evidence, especially for young sighted adults, because the age range of this cohort was relatively small and all

participants were young adults. To validate our results, we performed a two-sample t test with a threshold of $q < 0.05$ (FDR corrected, cluster size > 15 voxels) without removing the effect of age. We found that the main results were similar with those after removing the effect of age (Fig. 2B). No brain regions showed a significant decrease in synchronization in the SN, VN, and SMN in the CB group relative to the SC group. There are no significant group differences ($q < 0.05$, FDR corrected) in the synchronization of the remaining RSNs.

Altered FNCs in CB

Compared with the SC, CB subjects showed significantly ($P < 0.005$, uncorrected) increased FNCs between the SN and the right FPN, between right FPN and the VN, and between the left FPN and the VN; while the FNC between the VN and SMN was decreased in CB subjects ($P < 0.005$, uncorrected) (Fig. 3). However, none of these differences can survive after Bonferroni correction ($P < 0.05$). None of the remaining pairs of RSNs showed significant differences in the FNC between groups ($P < 0.005$, uncorrected).

DISCUSSION

To our knowledge, this is the first study that investigates RSN connectivity alterations in CB. We found increased synchronization within the SN and the occipital cortex and enhanced FNCs between the SN and the FPN and between the FPN and the occipital cortex in CB, although the FNC between the occipital cortex and the SMN was decreased. These findings provide novel insight for the large scale functional reorganization in CB.

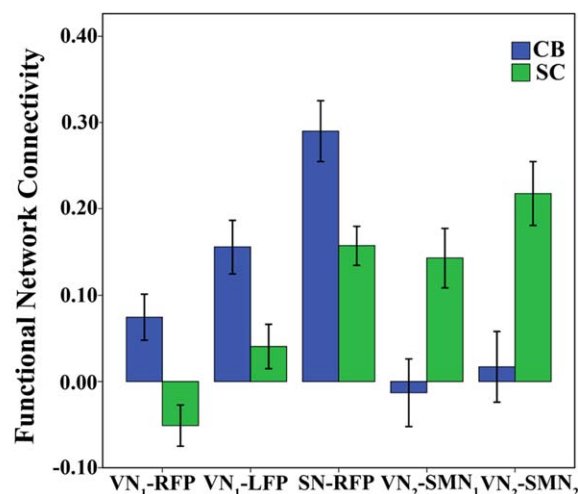
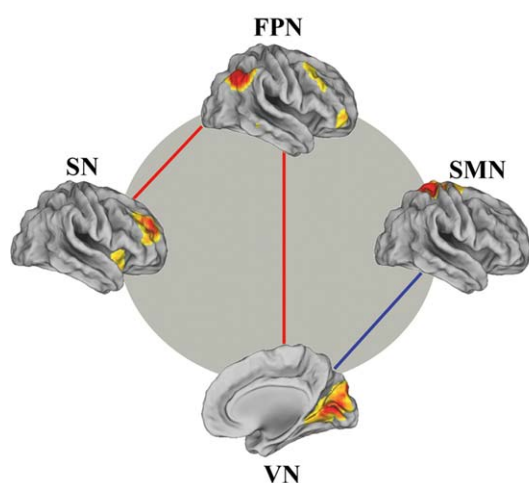


Figure 3.

Inter-network function changes between groups. The functional connectivity between the SN and FPN was increased in the CB, as well as between the FPN and VN ($P < 0.005$, uncorrected); the functional connectivity of the VN with the SMN was decreased in these subjects ($P < 0.005$, uncorrected). Error bars indicate standard error of mean (SEM). CB, congenitally blind;

FPN, frontoparietal network; RSNs, resting state networks; SC, sighted control; SMN, sensorimotor network; SN, salience network; VN₁, striate part of visual network; VN₂, ventral part of visual network. [Color figure can be viewed in the online issue, which is available at wileyonlinelibrary.com.]

Increased RSN Synchronization in CB

Compared with SC, CB subjects showed increased synchronization within the occipital cortex where increased cortical thickness (Bridge et al., 2009; Jiang et al., 2009; Park et al., 2009), brain regional homogeneity (Liu et al., 2011), metabolism and blood flow (De Volder et al., 1997; Mishina et al., 2003; Uhl et al., 1993; Veraart et al., 1990), and decreased regional volume (Noppeney et al., 2005; Pan et al., 2007; Ptito et al., 2008) were coexistence. Multiple processes may contribute to the alterations in the occipital cortex in CB. First, the synaptic pruning of the occipital cortex is dependent on visual experience (Bourgeois et al., 1989; Chechik et al., 1999) and is interfered with the CB, which results in the relatively high synaptic density in the occipital cortex. Secondly, early visual deprivation lead to the increases in corticocortical (Karlen et al., 2006; Kupers et al., 2006), thalamocortical (Karlen et al., 2006; Rehkamper et al., 1994) and intracortical connections (Callaway and Katz, 1991; Sur and Leamey, 2001) in the occipital cortex. Finally, axonal degeneration secondary to the anterior visual pathway damage will result in the atrophy of the occipital cortex (Pan et al., 2007). All of these factors exert differential influences on the structural and functional alterations of the occipital cortex in CB. Therefore, the neural mechanisms of the increased synchronization in the occipital cortex in CB are complex and may represent an integrated consequence of the developmental, plastic, and degenerative factors.

CB subjects also showed increased synchronization in the right FIC and prefrontal cortex within the salience

network. This network responds to the degree of subjective salience, whether cognitive, homeostatic, or emotional (Craig, 2002; 2009; Seeley et al., 2007), and serves to identify the most relevant among several internal and extrapersonal stimuli in order to guide behavior (Menon and Uddin, 2010). In particular, the FIC, especially the right one, is involved in detecting salient stimuli from the vast and continuous stream of visual, auditory, tactile and other sensory inputs and to initiate attention control signals, which are then sustained by the dorsal ACC and the prefrontal cortices (Menon and Uddin, 2010). Loss of sight makes CB subjects depend more on nonvisual inputs to efficiently interact with the environment. Many pieces of evidence have suggested that blind individuals showed increased sensitivity to auditory and tactile stimuli (Gougoux et al., 2005; Pascual-Leone et al., 2005; Rauschecker, 1995). The increased synchronization in SN in the CB might reflect the enhanced ability to identify salient stimuli from the auditory, tactile and other sensory inputs, which may facilitate the bottom-up control of attention.

Altered FNCs in CB

The human brain is a large, dynamic system with an optimal balance between functional specialization and integration. Investigation on the intranetwork synchronization may improve our understanding of the functional specialization, whereas investigation on internetwork connectivity may improve our understanding of the functional integration of the brain. An intriguing finding of this study

is that CB showed increased FNC between the SN and the FPN. As a key node of the SN, the right FIC plays a critical and causal role in activating the FPN and deactivating the DMN (Sridharan et al., 2008). It has been suggested that the SN is to first identify salient stimuli from the vast and continuous stream of sensory stimuli (Menon and Uddin, 2010). Once such a stimulus is detected, the SN will initiate appropriate transient control signals to engage brain areas (including the FPN) which mediating attention, working memory and higher order cognitive processes (Bunge et al., 2001; Crottaz-Herbette et al., 2004; D'Esposito, 2007; Koechlin and Summerfield, 2007; Miller and Cohen, 2001; Muller and Knight, 2006; Petrides, 2005). In the CB, the enhanced FNC between the SN and the FPN may represent a compensatory plasticity that supports a normal cognitive function in CB even in the absence of visual input.

In sighted subjects, it has been suggested that the FPN was closely associated with the visual cortex to selectively process task-relevant visual stimuli by a top-down control manner (Chadick and Gazzaley, 2011; Gazzaley et al., 2007). In the CB, the visual cortex shifts its function to process the auditory and tactile stimuli (Burton et al., 2006; Kujala et al., 2005; Poirier et al., 2006; Sadato et al., 1996, 1998). Thus the increased FNC between the FPN and VN in the CB may reflect the enhanced top-down control of attention to these sensory modalities, which partly explains the better performance on the auditory and tactile tasks (Gougoux et al., 2005; Pascual-Leone et al., 2005; Rauschecker, 1995). Alternatively, this finding may represent a large scale functional reorganization of the cognitive-related networks in CB because previous studies have reported activations in the visual cortex of the CB during a variety of cognitive tasks (Amedi et al., 2003; Renier et al., 2010; Stevens et al., 2007).

In the present study, we also found decreased FNC between the VN and SMN in the CB, which was well consistent with two previous studies (Liu et al., 2007; Yu et al., 2008). In these two studies, the CB subjects showed decreased functional connectivity between the visual and sensory-motor areas. General loss hypothesis due to the absence of visual input may be a candidate explanation for this finding (Liu et al., 2007; Yu et al., 2008).

Limitations

Several methodological issues should be considered when one interpreting our findings. First, it has been recently noted that even small amounts of head motion may introduce artifactual interindividual and inter-group differences in fMRI metrics (Power et al., 2012a,b; Satterthwaite et al., 2012; Van Dijk et al., 2012). More importantly, this influence cannot be effectively removed by traditionally regressing out head realignment parameters (Power et al., 2012a). We tried to reduce the influence by excluding subjects with an FD of >0.5 mm and performing our analyses

using the mean FD of each subject as a nuisance covariate. Second, previous studies suggest that different size of smooth kernel may generate different results (Fransson et al., 2002; Geissler et al., 2005; Hopfinger et al., 2000; White et al., 2001). In the present study, we tested the effect of different smooth kernels (FWHM = 4, 6, and 8 mm) on our results and found similar group differences in the SN and VN across the three smoothing filters (Supporting Information Fig. S1). Thus a smooth kernel of 6mm was adopted. Third, there is no gold standard for determining the number of components in the ICA. We determined the number of components according to the representativeness of each RSN based on previous studies (Beckmann et al., 2005, 2009; Beckmann and Smith, 2005; Damoiseaux et al., 2006; De Luca et al., 2006; Mantini et al., 2007). We have decomposed our data into 20, 30, and 70 components. The scheme of 30 components seemed more plausible than the other two schemes (Supporting Information Fig. S2). However, this subjective selection of ICA components should be considered as a limitation of this study. Finally, we adopted different methods for multiple comparisons based on the effective size and the aim of the comparison. To construct the typical structure for each RSN, we used a relatively high threshold ($t > 15$) to improve the representativeness of each RSN; however, in the FNC analyses, we used a compromised threshold of $P < 0.005$ (uncorrected) to show the trends of the group difference.

CONCLUSION

In this study, we investigated RSN connectivity alterations in CB and found increased synchronization within the SN and the occipital cortex and enhanced FNCs between the SN and the FPN and between the FPN and the occipital cortex in CB. The large scale functional reorganization in CB may help us to understand the preserved ability in cognitive control in the absence of visual input.

REFERENCES

- Amedi A, Raz N, Pianka P, Malach R, Zohary E (2003): Early 'visual' cortex activation correlates with superior verbal memory performance in the blind. *Nat Neurosci* 6:758–766.
- Beckmann CF, Smith SM (2005): Tensorial extensions of independent component analysis for multisubject fMRI analysis. *Neuroimage* 25:294–311.
- Beckmann CF, DeLuca M, Devlin JT, Smith SM (2005): Investigations into resting-state connectivity using independent component analysis. *Philos Trans R Soc Lond B Biol Sci* 360:1001–1013.
- Beckmann CF, Mackay C, Filippin N, Smith S (2009): Group comparison of resting-state fmri data using multi-subject ica and dual regression. *Neuroimage* 47 (Suppl 1):S39–S41.
- Bell AJ, Sejnowski TJ (1995): An information-maximization approach to blind separation and blind deconvolution. *Neural Comput* 7:1129–1159.
- Biswal B, Yetkin FZ, Haughton VM, Hyde JS (1995): Functional connectivity in the motor cortex of resting human brain using echo-planar MRI. *Magn Reson Med* 34:537–541.

- Biswal BB, Van Kylen J, Hyde JS (1997): Simultaneous assessment of flow and BOLD signals in resting-state functional connectivity maps. *NMR Biomed* 10:165–170.
- Bourgeois JP, Jastreboff PJ, Rakic P (1989): Synaptogenesis in visual cortex of normal and preterm monkeys: Evidence for intrinsic regulation of synaptic overproduction. *Proc Natl Acad Sci USA* 86:4297–4301.
- Bridge H, Cowey A, Ragge N, Watkins K (2009): Imaging studies in congenital anophthalmia reveal preservation of brain architecture in ‘visual’ cortex. *Brain* 132 (Part 12):3467–3480.
- Buckner RL, Vincent JL (2007): Unrest at rest: Default activity and spontaneous network correlations. *Neuroimage* 37:1091–1096.
- Buckner RL, Andrews-Hanna JR, Schacter DL (2008): The brain’s default network: Anatomy, function, and relevance to disease. *Ann N Y Acad Sci* 1124:1–38.
- Bunge SA, Ochsner KN, Desmond JE, Glover GH, Gabrieli JD (2001): Prefrontal regions involved in keeping information in and out of mind. *Brain* 124 (Part 10):2074–2086.
- Burton H, McLaren DG (2006): Visual cortex activation in late-onset, Braille naive blind individuals: An fMRI study during semantic and phonological tasks with heard words. *Neurosci Lett* 392:38–42.
- Burton H, McLaren DG, Sinclair RJ (2006): Reading embossed capital letters: An fMRI study in blind and sighted individuals. *Hum Brain Mapp* 27:325–339.
- Calhoun VD, Adali T, Pearlson GD, Pekar JJ (2001): A method for making group inferences from functional MRI data using independent component analysis. *Hum Brain Mapp* 14:140–151.
- Callaway EM, Katz LC (1991): Effects of binocular deprivation on the development of clustered horizontal connections in cat striate cortex. *Proc Natl Acad Sci USA* 88:745–749.
- Chadick JZ, Gazzaley A (2011): Differential coupling of visual cortex with default or frontal-parietal network based on goals. *Nat Neurosci* 14:830–832.
- Chechik G, Meilijson I, Ruppin E (1999): Neuronal regulation: A mechanism for synaptic pruning during brain maturation. *Neural Comput* 11:2061–2080.
- Cordes D, Haughton V, Carew JD, Arfanakis K, Maravilla K (2002): Hierarchical clustering to measure connectivity in fMRI resting-state data. *Magn Reson Imaging* 20:305–317.
- Craig AD (2002): How do you feel? Interoception: The sense of the physiological condition of the body. *Nat Rev Neurosci* 3:655–666.
- Craig AD (2009): How do you feel—Now? The anterior insula and human awareness. *Nat Rev Neurosci* 10:59–70.
- Crottaz-Herbette S, Anagnoson RT, Menon V (2004): Modality effects in verbal working memory: Differential prefrontal and parietal responses to auditory and visual stimuli. *Neuroimage* 21:340–351.
- D’Esposito M (2007): From cognitive to neural models of working memory. *Philos Trans R Soc Lond B Biol Sci* 362:761–772.
- Damoiseaux JS, Rombouts SA, Barkhof F, Scheltens P, Stam CJ, Smith SM, Beckmann CF (2006): Consistent resting-state networks across healthy subjects. *Proc Natl Acad Sci USA* 103:13848–13853.
- De Luca M, Beckmann CF, De Stefano N, Matthews PM, Smith SM (2006): fMRI resting state networks define distinct modes of long-distance interactions in the human brain. *Neuroimage* 29:1359–1367.
- De Volder AG, Bol A, Blin J, Robert A, Arno P, Grandin C, Michel C, Veraart C (1997): Brain energy metabolism in early blind subjects: Neural activity in the visual cortex. *Brain Res* 750:235–244.
- Erhardt EB, Rachakonda S, Bedrick EJ, Allen EA, Adali T, Calhoun VD (2011): Comparison of multi-subject ICA methods for analysis of fMRI data. *Hum Brain Mapp* 32:2075–2095.
- Fox MD, Raichle ME (2007): Spontaneous fluctuations in brain activity observed with functional magnetic resonance imaging. *Nat Rev Neurosci* 8:700–711.
- Fox MD, Snyder AZ, Vincent JL, Corbetta M, Van Essen DC, Raichle ME (2005): The human brain is intrinsically organized into dynamic, anticorrelated functional networks. *Proc Natl Acad Sci USA* 102:9673–9678.
- Fox MD, Corbetta M, Snyder AZ, Vincent JL, Raichle ME (2006): Spontaneous neuronal activity distinguishes human dorsal and ventral attention systems. *Proc Natl Acad Sci USA* 103:10046–10051.
- Fransson P, Merboldt KD, Petersson KM, Ingvar M, Frahm J (2002): On the effects of spatial filtering—A comparative fMRI study of episodic memory encoding at high and low resolution. *Neuroimage* 16:977–984.
- Gazzaley A, Rissman J, Cooney J, Rutman A, Seibert T, Clapp W, D’Esposito M (2007): Functional interactions between prefrontal and visual association cortex contribute to top-down modulation of visual processing. *Cereb Cortex* 17 (Suppl 1): i125–i135.
- Geissler A, Lanzenberger R, Barth M, Tahamtan AR, Milakara D, Gartus A, Beisteiner R (2005): Influence of fMRI smoothing procedures on replicability of fine scale motor localization. *Neuroimage* 24:323–331.
- Gougoux F, Zatorre RJ, Lassonde M, Voss P, Lepore F (2005): A functional neuroimaging study of sound localization: Visual cortex activity predicts performance in early-blind individuals. *PLoS Biol* 3:e27.
- Greicius MD, Krasnow B, Reiss AL, Menon V (2003): Functional connectivity in the resting brain: A network analysis of the default mode hypothesis. *Proc Natl Acad Sci USA* 100:253–258.
- Greicius MD, Srivastava G, Reiss AL, Menon V (2004): Default-mode network activity distinguishes Alzheimer’s disease from healthy aging: Evidence from functional MRI. *Proc Natl Acad Sci USA* 101:4637–4642.
- Hopfinger JB, Buchel C, Holmes AP, Friston KJ (2000): A study of analysis parameters that influence the sensitivity of event-related fMRI analyses. *Neuroimage* 11:326–333.
- Jiang J, Zhu W, Shi F, Liu Y, Li J, Qin W, Li K, Yu C, Jiang T (2009): Thick visual cortex in the early blind. *J Neurosci* 29:2205–2211.
- Karlen SJ, Kahn DM, Krubitzer L (2006): Early blindness results in abnormal corticocortical and thalamocortical connections. *Neuroscience* 142:843–858.
- Koechlin E, Summerfield C (2007): An information theoretical approach to prefrontal executive function. *Trends Cogn Sci* 11:229–235.
- Kujala T, Palva MJ, Salonen O, Alku P, Huottilainen M, Jarvinen A, Naatanen R (2005): The role of blind humans’ visual cortex in auditory change detection. *Neurosci Lett* 379:127–131.
- Kupers R, Fumal A, de Noordhout AM, Gjedde A, Schoenen J, Ptito M (2006): Transcranial magnetic stimulation of the visual cortex induces somatotopically organized qualia in blind subjects. *Proc Natl Acad Sci USA* 103:13256–13260.
- Lepore N, Voss P, Lepore F, Chou YY, Fortin M, Gougoux F, Lee AD, Brun C, Lassonde M, Madsen SK, Toga AW, Thompson PM (2010): Brain structure changes visualized in early- and late-onset blind subjects. *Neuroimage* 49:134–140.
- Liu C, Liu Y, Li W, Wang D, Jiang T, Zhang Y, Yu C (2011): Increased regional homogeneity of blood oxygen level-

- dependent signals in occipital cortex of early blind individuals. *Neuroreport* 22:190–194.
- Liu Y, Yu C, Liang M, Li J, Tian L, Zhou Y, Qin W, Li K, Jiang T (2007): Whole brain functional connectivity in the early blind. *Brain* 130 (Part 8):2085–2096.
- Mantini D, Perrucci MG, Del Gratta C, Romani GL, Corbetta M (2007): Electrophysiological signatures of resting state networks in the human brain. *Proc Natl Acad Sci USA* 104:13170–13175.
- Menon V, Uddin LQ (2010): Saliency, switching, attention and control: A network model of insula function. *Brain Struct Funct* 214:655–667.
- Miller EK, Cohen JD (2001): An integrative theory of prefrontal cortex function. *Annu Rev Neurosci* 24:167–202.
- Mishina M, Senda M, Kiyosawa M, Ishiwata K, De Volder AG, Nakano H, Toyama H, Oda K, Kimura Y, Ishii K, Sasaki T, Ohyama M, Komaba Y, Kobayashi S, Kitamura S, Katayama Y (2003): Increased regional cerebral blood flow but normal distribution of GABAA receptor in the visual cortex of subjects with early-onset blindness. *Neuroimage* 19:125–131.
- Muller NG, Knight RT (2006): The functional neuroanatomy of working memory: Contributions of human brain lesion studies. *Neuroscience* 139:51–58.
- Noppeney U, Friston KJ, Ashburner J, Frackowiak R, Price CJ (2005): Early visual deprivation induces structural plasticity in gray and white matter. *Curr Biol* 15:R488–R490.
- Pan WJ, Wu G, Li CX, Lin F, Sun J, Lei H (2007): Progressive atrophy in the optic pathway and visual cortex of early blind Chinese adults: A voxel-based morphometry magnetic resonance imaging study. *Neuroimage* 37:212–220.
- Park HJ, Lee JD, Kim EY, Park B, Oh MK, Lee S, Kim JJ (2009): Morphological alterations in the congenital blind based on the analysis of cortical thickness and surface area. *Neuroimage* 47:98–106.
- Pascual-Leone A, Amedi A, Fregni F, Merabet LB (2005): The plastic human brain cortex. *Annu Rev Neurosci* 28:377–401.
- Petrides M (2005): Lateral prefrontal cortex: Architectonic and functional organization. *Philos Trans R Soc Lond B Biol Sci* 360:781–795.
- Poirier C, Collignon O, Scheiber C, Renier L, Vanlierde A, Tranduy D, Veraart C, De Volder AG (2006): Auditory motion perception activates visual motion areas in early blind subjects. *Neuroimage* 31:279–285.
- Power JD, Barnes KA, Snyder AZ, Schlaggar BL, Petersen SE (2012a): Spurious but systematic correlations in functional connectivity MRI networks arise from subject motion. *Neuroimage* 59:2142–2154.
- Power JD, Barnes KA, Snyder AZ, Schlaggar BL, Petersen SE (2012b): Steps toward optimizing motion artifact removal in functional connectivity MRI: A reply to Carp. *Neuroimage* 76:439–441.
- Ptito M, Schneider FC, Paulson OB, Kupers R (2008): Alterations of the visual pathways in congenital blindness. *Exp Brain Res* 187:41–49.
- Raichle ME, MacLeod AM, Snyder AZ, Powers WJ, Gusnard DA, Shulman GL (2001): A default mode of brain function. *Proc Natl Acad Sci USA* 98:676–682.
- Rauschecker JP (1995): Compensatory plasticity and sensory substitution in the cerebral cortex. *Trends Neurosci* 18:36–43.
- Rehkaemper G, Necker R, Nevo E (1994): Functional anatomy of the thalamus in the blind mole rat *Spalax ehrenbergi*: An architectonic and electrophysiologically controlled tracing study. *J Comp Neurol* 347:570–584.
- Reich L, Szwed M, Cohen L, Amedi A (2011): A ventral visual stream reading center independent of visual experience. *Curr Biol* 21:363–368.
- Renier LA, Anurova I, De Volder AG, Carlson S, VanMeter J, Rauschecker JP (2010): Preserved functional specialization for spatial processing in the middle occipital gyrus of the early blind. *Neuron* 68:138–148.
- Ricciardi E, Vanello N, Sani L, Gentili C, Scilingo EP, Landini L, Guazzelli M, Bicchì A, Haxby JV, Pietrini P (2007): The effect of visual experience on the development of functional architecture in hMT+. *Cereb Cortex* 17:2933–2939.
- Sadato N, Pascual-Leone A, Grafman J, Ibanez V, Deiber MP, Dold G, Hallett M (1996): Activation of the primary visual cortex by Braille reading in blind subjects. *Nature* 380:526–528.
- Sadato N, Pascual-Leone A, Grafman J, Deiber MP, Ibanez V, Hallett M (1998): Neural networks for Braille reading by the blind. *Brain* 121 (Part 7):1213–1229.
- Satterthwaite TD, Wolf DH, Loughhead J, Ruparel K, Elliott MA, Hakonarson H, Gur RC, Gur RE (2012): Impact of in-scanner head motion on multiple measures of functional connectivity: Relevance for studies of neurodevelopment in youth. *Neuroimage* 60:623–632.
- Schmithorst VJ, Holland SK (2004): Comparison of three methods for generating group statistical inferences from independent component analysis of functional magnetic resonance imaging data. *J Magn Reson Imaging* 19:365–368.
- Seeley WW, Menon V, Schatzberg AF, Keller J, Glover GH, Kenna H, Reiss AL, Greicius MD (2007): Dissociable intrinsic connectivity networks for salience processing and executive control. *J Neurosci* 27:2349–2356.
- Shimony JS, Burton H, Epstein AA, McLaren DG, Sun SW, Snyder AZ (2006): Diffusion tensor imaging reveals white matter reorganization in early blind humans. *Cereb Cortex* 16:1653–1661.
- Sridharan D, Levitin DJ, Menon V (2008): A critical role for the right fronto-insular cortex in switching between central-executive and default-mode networks. *Proc Natl Acad Sci USA* 105:12569–12574.
- Stevens AA, Snodgrass M, Schwartz D, Weaver K (2007): Preparatory activity in occipital cortex in early blind humans predicts auditory perceptual performance. *J Neurosci* 27:10734–10741.
- Sur M, Leamey CA (2001): Development and plasticity of cortical areas and networks. *Nat Rev Neurosci* 2:251–262.
- Uhl F, Franzen P, Podreka I, Steiner M, Deecke L (1993): Increased regional cerebral blood flow in inferior occipital cortex and cerebellum of early blind humans. *Neurosci Lett* 150:162–164.
- Van Dijk KR, Sabuncu MR, Buckner RL (2012): The influence of head motion on intrinsic functional connectivity MRI. *Neuroimage* 59:431–438.
- Veraart C, De Volder AG, Wanet-Defalque MC, Bol A, Michel C, Goffinet AM (1990): Glucose utilization in human visual cortex is abnormally elevated in blindness of early onset but decreased in blindness of late onset. *Brain Res* 510:115–121.
- White T, O’Leary D, Magnotta V, Arndt S, Flaum M, Andreasen NC (2001): Anatomic and functional variability: The effects of filter size in group fMRI data analysis. *Neuroimage* 13:577–588.
- Yu C, Shu N, Li J, Qin W, Jiang T, Li K (2007): Plasticity of the corticospinal tract in early blindness revealed by quantitative analysis of fractional anisotropy based on diffusion tensor tractography. *Neuroimage* 36:411–417.
- Yu C, Liu Y, Li J, Zhou Y, Wang K, Tian L, Qin W, Jiang T, Li K (2008): Altered functional connectivity of primary visual cortex in early blindness. *Hum Brain Mapp* 29:533–543.