

Article

Dietary Spirulina Supplementation Protects Visual Function From Photostress by Suppressing Retinal Neurodegeneration in Mice

Tomohiro Okamoto^{1,2,*}, Hirohiko Kawashima^{1,2,*}, Hideto Osada^{1,2}, Eriko Toda^{1,2}, Kohei Homma^{1,2}, Norihiro Nagai^{1,2}, Yasuyuki Imai³, Kazuo Tsubota², and Yoko Ozawa^{1,2}

¹ Laboratory of Retinal Cell Biology, Keio University School of Medicine, Tokyo, Japan

² Department of Ophthalmology, Keio University School of Medicine, Tokyo, Japan

³ DIC LIFETEC CO., Ltd, Tokyo, Japan

Correspondence: Yoko Ozawa, Laboratory of Retinal Cell Biology, Department of Ophthalmology, Keio University School of Medicine, 35 Shinanomachi, Shinjuku-ku, Tokyo 160-8582, Japan. e-mail: ozawa@a5.keio.jp

Received: 3 June 2019

Accepted: 29 August 2019

Published: 20 November 2019

Keywords: retina; neurodegeneration; light exposure; photoreceptor; oxidative stress; antioxidative enzyme

Citation: Okamoto T, Kawashima H, Osada H, Toda E, Homma K, Nagai N, Imai Y, Tsubota K, Ozawa Y. Dietary Spirulina supplementation protects visual function from photostress by suppressing retinal neurodegeneration in mice. *Trans Vis Sci Tech.* 2019;8(6):20, <https://doi.org/10.1167/tvst.8.6.20>
Copyright 2019 The Authors

Purpose: We investigated whether daily consumption of Spirulina, an antioxidant generating cyanobacterial nutritional supplement, would suppress photostress-induced retinal damage and prevent vision loss in mice.

Methods: Six-week-old male BALB/cAJcl mice were allowed constant access to either a standard or Spirulina-supplemented diet (20% Spirulina) that included the antioxidants, β -carotene and zeaxanthin, and proteins for 4 weeks. Following dark adaptation, mice were exposed to 3000-lux white light for 1 hour and returned to their cages. Visual function was analyzed by electroretinogram, and retinal histology by hematoxylin and eosin staining, terminal deoxynucleotidyl transferase-mediated, deoxyuridine triphosphate nick-end labeling (TUNEL) assay, and immunohistochemistry. Retinal expression of proteins, reactive oxygen species (ROS), and mRNAs were measured using immunoblot analysis, enzyme-linked immunosorbent assay (ELISA), 2',7'-dichlorofluorescein-diacetate, or ROS Brite 700 Dyes, and real-time reverse-transcription polymerase chain reaction, respectively.

Results: Light-induced visual function impairment was suppressed by constant Spirulina intake. Thinning of the photoreceptor layer and outer segments, photoreceptor cell death, decreased rhodopsin protein, and induction of glial fibrillary acidic protein were ameliorated in the Spirulina-intake group. Increased retinal ROS levels after light exposure were reduced by Spirulina supplementation. Light-induced superoxide dismutase 2 and heme oxygenase-1 mRNAs in the retina, and Nrf2 activation in the photoreceptor cells, were preserved with Spirulina supplementation, despite reduced ROS levels, suggesting two pathways for suppressing ROS, scavenging and induction of endogenous antioxidative enzymes. Light-induced MCP-1 retinal mRNA and proteins were also suppressed by Spirulina.

Conclusions: Spirulina ingestion protected retinal photoreceptors from photostress in the retina.

Translational Relevance: Spirulina has potential as a nutrient supplement to prevent vision loss related to oxidative damage in the future.

Introduction

Age-related macular degeneration (AMD) is a leading cause of blindness worldwide.^{1–3} As neural tissue, the retina cannot self-repair once the disease

progresses; therefore, the possibility that ingestion of antioxidant supplements might prevent AMD progression has gained global attention.⁴ Vitamin C, vitamin E, and lutein are the main micronutrient supplements recommended for the prevention of AMD by two large clinical studies, the Age-Related

Eye Disease Study (AREDS)⁵ and AREDS2.⁶ These recommendations are also followed in clinical practice.⁷ The biological activity and mechanisms have been elucidated using animal model and cell culture studies.^{8–15} The prevention of AMD requires daily administration of these compounds, and combination tablets have been developed for this purpose. However, the requirement for long-term use has led to research into alternative choices that would be valuable for patients with difficulties in swallowing or other age- and disease-related problems with tablet use. Moreover, the antioxidant supplements proposed in the AREDS⁵/AREDS2⁶ did not produce an effect that was sufficient to prevent AMD progression in all patients. These studies identified nonresponders to the formula who require the administration of alternative nutrients.

In this study, we focused on Spirulina (*Arthrospira platensis*), a prokaryotic cyanobacterium (a group formerly called blue-green algae) with a helical shape (width, 5–8 μm ; length, 300–500 μm)¹⁶ that appeared in the fossil record approximately 3 billion years ago. Spirulina is cultivated worldwide and used as a dietary supplement and whole food.^{17–21} It contains proteins, vitamins, minerals, polysaccharides (dietary fiber), and phytochemicals. In addition to the orange-yellow carotenoids, β -carotene and zeaxanthin, it contains blue phycocyanin and green chlorophyll pigments; therefore, it has antioxidative properties.¹⁸ Human studies have shown that Spirulina can supply protein, vitamins, and minerals to resolve nutritional deficiencies^{18,19} and has an antioxidative effect in exercise-induced oxidative stress.^{22,23} In addition, Spirulina has been used in clinical studies of patients with chronic obstructive pulmonary disease (COPD) and skeletal muscle disorders.^{18,22,23} Its antioxidant activity exhibits antipathologic effects in allergic rhinitis²⁴ and obesity.²⁵ Further, neuroprotective effects in the brain have been observed in animal models of Parkinson's disease²⁶ and a neurotoxic model generated using tributyltin chloride.²⁷ However, effects on the retina and vision have not been reported in animal experiments or clinical studies.

One of the risk factors for AMD is light exposure,²⁸ which causes local oxidative stress in the retina.^{9,14,29–31} Thus, protecting retinal tissue from photostress may also prevent AMD progression. To that end, we analyzed the biological effects of Spirulina ingestion on the retinas of mice exposed to light at an intensity known to promote retinal degeneration. The results provide a proof of concept

Table. Contents of Experimental Diets

	Spirulina Supplemented	Control (CE-2)
Moisture, %	9.8	9.1
Crude protein, %	33.6	25.4
Crude fat, %	5.0	5.0
Crude fiber, %	3.3	4.0
Crude ash, %	6.8	6.8
Total carotenoids, mg/100 g	79.0	0.97
β -carotene, mg/100 g	32.5	0.07
Zeaxanthin, mg/100 g	17.7	0.16
Retinol, mg/100 g	0.88	0.89
c-phycocyanin, mg/100 g	860.0	<0.0001
Vitamin A, IU/100 g	11,960	3010
Vitamin C (total ascorbic acid), mg/100 g	4.0	24.0
Vitamin E (total tocopherol), mg/100 g	6.8	7.8
α -tocopherol, mg/100 g	5.4	5.2
β -tocopherol, mg/100 g	0.6	1.0
γ -tocopherol, mg/100 g	0.7	1.4
δ -tocopherol, mg/100 g	0.1	0.2

The measurement methods were as follows: moisture, atmospheric-pressure heat-drying; protein, Kjeldahl method; lipid, diethyl ether extraction; fiber, standing method; ash, direct ashing; phycocyanin, absorptiometry; β -carotene and zeaxanthin, retinol and vitamins C and E, high-performance liquid chromatography; vitamin A, estimated from the values for β carotene and retinol. Data were obtained at the Japan Food Research Laboratories.

for use of Spirulina as a retina- and vision-protective nutritional supplement.

Methods

Preparation of the Spirulina-Supplemented Diet

Spirulina was provided by DIC LIFETEC CO., Ltd. (Tokyo, Japan), and was processed into the Spirulina-supplemented solid diet used here by CLEA Japan (Tokyo, Japan). Diet compositions were measured by Japan Food Research Laboratories (Tokyo, Japan) (Table).

Animals

Six-week-old male BALB/cAJcl mice (CLEA Japan) were maintained for 4 weeks with unlimited

access to either a standard CE-2 solid diet (CLEA Japan) or Spirulina-supplemented solid diet, which contained 20% Spirulina (Table). The mean mice weights in the control diet-fed and nonlight-exposed, control diet-fed and light-exposed, and Spirulina-supplemented diet-fed and light-exposed mice were 29.2 ± 9.8 , 28.9 ± 8.8 , and 27.9 ± 10.2 g, respectively, at the time of the experiment. There were no significant differences in weight between groups (data not shown). No adverse events were observed. All animal experiments were conducted in accordance with the ARVO Statement for the Use of Animals in Ophthalmic and Vision Research and the guidelines of the Animal Care Committee of Keio University. The animal experimental protocols were approved by the Animal Care Committee of Keio University (approval No. 08002).

Light Exposure

Mice were exposed to light as previously described.^{9,14,29–33} Briefly, mice were dark-adapted in complete darkness for 12 hours before light exposure. Their pupils were dilated with a mixture of 0.5% tropicamide and 0.5% phenylephrine (Mydrin-P; Santen Pharmaceutical, Osaka, Japan) just before light exposure. Mice were exposed to a white fluorescent lamp (FHD100ECW; Panasonic, Osaka, Japan) at 3000 lux for 1 hour (starting at 9 AM) in a dedicated exposure box maintained at $22 \pm 2^\circ\text{C}$ and containing stainless steel mirrors on each wall and the floor (Tinker N, Kyoto, Japan). After light exposure, the mice were returned to their cages and maintained under dim cyclic light (5 lux, 12-hours on/off) until they were euthanized with 70 mg/kg sodium pentobarbital at the end of each experiment. Unexposed control mice were also maintained under dim cyclic lighting and euthanized with 70 mg/kg sodium pentobarbital at the end of each experiment.

Electroretinogram (ERG)

Mice were dark-adapted for at least 12 hours, then placed under dim red illumination before the start of ERG. Mice were anesthetized with 0.1 mL/10 g of mixed anesthetic (0.75 mg/kg medetomidine, 4.0 mg/kg midazolam, and 5.0 mg/kg butorphanol), and warmed on a heating pad throughout the experiment. Before recording, the pupils of the mice were dilated using Mydrin-P as described in the previous section. Recording used the PuREC system (Mayo Corp, Inazawa, Japan). Ground and reference electrodes were placed on the tail and head, respectively, and the

active gold-wire electrodes were placed on the cornea. Full-field, scotopic ERGs were obtained in response to a flash at intensities ranging from 0.01 to 30 $\text{cd}\cdot\text{s}/\text{m}^2$. Stimuli were delivered using an LED Visual Stimulator (LS-100; Mayo Corp) and a Hemisphere Stimulator (Mayo Corp). Data were differentially amplified and filtered through a 300-Hz digital lowpass filter. The a-wave amplitude was measured from baseline to the trough, while the b-wave amplitude was measured from the trough of the a-wave to the peak of the b-wave. The implicit times of the a- and b-waves were measured from the stimulus onset to the wave peaks. The peak points were automatically indicated by the system and confirmed by the examiner.

Histologic Analysis

Eyes were enucleated and fixed in 4% paraformaldehyde overnight at 4°C , then embedded in paraffin (Sakura Finetek, Tokyo, Japan). Sections (thickness, 8–10 μm), including the portion from the optic nerve head to the most peripheral region of the retina, were deparaffinized by passing them through a graded solvent series with three 5-minute exposures to each of the following stages: xylene, 1:1 xylene-alcohol, 100% ethanol, 90% ethanol, 70% ethanol, and 50% ethanol. The remaining ethanol was removed by rinsing with distilled water.

To measure the lengths and thicknesses of retinal components, sections were stained with hematoxylin and eosin. Measurements were performed using ImageJ (National Institutes of Health, Bethesda, MD, USA, at <http://rsb.info.nih.gov/ij/index.html>), and averaged as described previously.^{34–37}

The terminal deoxynucleotidyl transferase-mediated, deoxyuridine triphosphate nick-end labeling (TUNEL) assay was performed using a commercial ApopTag Red apoptosis detection kit (Millipore, Bedford, MA) according to the manufacturer's protocol. Nuclei were stained with Cellstain (4',6-diamidino-2-phenylindole [DAPI]) solution (12 $\mu\text{g}/\text{mL}$; Dojindo Molecular Technologies, Kumamoto, Japan). TUNEL-positive cells in each section were counted and averaged as described previously.^{34–37}

For immunostaining, sections were incubated with blocking buffer followed by the primary antibody against glial fibrillary acidic protein (GFAP; 1:1,000; Dako, Carpinteria, CA), or rhodopsin (1:10,000; Thermo Fisher Scientific Inc., Waltham, MA) and Nrf2 (1:100; Abcam, Cambridge, FL) overnight at 4°C . Signals were detected by Alexa 488- (1:500; Thermo Fisher Scientific, Inc.) or Alexa 555-conjugated secondary (1:500; Thermo Fisher Scientific,

Inc.) antibodies. Nuclei were stained with Cellstain solution (2 µg/mL). The Nrf2 staining procedure included heating the sections in Immunosaver solution (1:200; Wako, Tokyo, Japan) for 45 minutes at 90°C for antigen retrieval before blocking. Nrf2-positive cells in each section were counted and averaged in each group.

All sections were examined under a fluorescent microscope equipped with a digital camera (Olympus Co., Tokyo, Japan).

Immunoblot Analysis

Eyes were enucleated, and each retina was isolated and placed in lysis buffer that included protease inhibitor cocktail (Complete, EDTA-free; Roche, Mannheim, Germany) and phosphatase inhibitor cocktails 2 and 3 (Sigma-Aldrich, St. Louis, MO), and sonicated on ice using a Handy Sonic UR-20 (Tomy Seiko, Tokyo, Japan). The iced suspension was incubated for 30 minutes, centrifuged at 20,400 *g* for 15 minutes at 4°C, and the supernatant transferred to a new tube. The lysate was treated with Laemmli sample buffer and separated by 10% sodium dodecyl sulfate–polyacrylamide gel electrophoresis. Proteins were transferred to a polyvinylidene fluoride membrane (Immobilon-P; Millipore) in a Trans-Blot SD Cell (Bio-Rad Laboratories, Hercules, CA). Membranes were blocked with 5% skim milk in Tris Buffered Saline with Tween (TBS-T) or Tris-NaCl (TNB) blocking buffer (0.1 M Tris-HCl, pH 7.5; 0.15 M NaCl; and 0.5% TSA blocking reagent; Perkin-Elmer Life Sciences, Waltham, MA), and incubated overnight at 4°C with a rabbit anti-rhodopsin antibody (1:100,000; LSL, Osaka, Japan). Next, membranes were incubated with horseradish peroxidase-conjugated secondary antibody. Signals were detected using an enhanced chemiluminescence system (ECL Blotting Analysis System; Amersham, Arlington Heights, IL), and measured with the ImageJ program. The same membrane was incubated with mouse anti- α -tubulin (1:100,000; Sigma-Aldrich), then with a horseradish peroxidase-conjugated secondary antibody to detect the signal in the same manner as rhodopsin. The value for rhodopsin was normalized to α -tubulin.

Real-Time, Reverse-Transcription Polymerase Chain Reaction (RT-PCR)

Total RNA was isolated from mouse retinas with TRIzol reagent (Life Technologies, Carlsbad, CA). RNA concentration was measured using a NanoDrop

1000 (Thermo Fisher Scientific, Inc.), and 1 µg of RNA was reverse-transcribed using SuperScript VILO master mix (Life Technologies) according to the manufacturer's instructions. For real-time PCR, the SYBR system³¹ was used. The forward and reverse primer sequences were as follows: superoxide dismutase 2 (SOD2),⁹ forward: 5'-CTGGACAAACCTGAGCCCTA-3', reverse: 5'-GAACCTTGGACTCCCACAGA-3'; and heme oxygenase-1 (HO-1), forward: 5'-GCTCTATCGTGCTCGCATGA-3', reverse: 5'-AGTGCCTGCAGCTCCTCAA-3'. The mRNA expression was normalized to glyceraldehyde 3-phosphate dehydrogenase (GAPDH). The primer sequences for GAPDH³¹ were as follows: forward: 5'-AACTTCGGCCCCATCTTCA-3' and reverse: 5'-GATGACCCTTTGGCTCCAC-3'. For Monocyte Chemoattractant Protein-1 (MCP-1), the TaqMan gene expression assay (TaqMan probe assay ID; Mm00441242_m1; Life Technologies) was used. Real-time PCR was performed using the StepOnePlus PCR system (Applied Biosystems, Foster City, CA) and gene expression was quantified using the $\Delta\Delta CT$ method.

ROS Measurement

Mouse eyes were enucleated and the retinas were immediately frozen and homogenized in phosphate buffered saline (PBS) using a Mixer Mill homogenizer (MM 300; Qiagen Inc., Chatsworth, CA) according to the manufacturer's protocol and previous reports, to maintain cellular conditions at the time of sampling and avoid cellular changes in response to the ROS released from homogenized cells. Homogenates were incubated with 2', 7'-dichlorofluorescein-diacetate (DCFH; 50 µM; Sigma-Aldrich) or ROS Brite 700 Dyes (50 µM; AAT Bioquest, Inc., Sunnyvale, CA) at 37°C in the dark for 1 hour. DCFH detects peroxides, peroxy radicals, and Nitrogen Oxide (NO), and ROS Brite 700 Dyes detect hydroxyl radicals and superoxide anions. Samples were centrifuged for 5 minutes and 20,400 *g* at 4°C. Pellets were washed with cold PBS twice and resuspended in cold PBS or *N*-2-hydroxyethyl-1-piperazine-*N'*-2-ethanesulfonic acid (HEPES)-buffered saline containing 100 µg/mL heparin. DCFH and ROS Brite 700 Dye fluorescence was measured using a Synergy4 system (BioTek Instruments, Inc., Winooski, VT).

Enzyme-Linked Immunosorbent Assay (ELISA)

Total protein was isolated from mouse retinas. The MCP-1 cytokine content was measured using ELISA

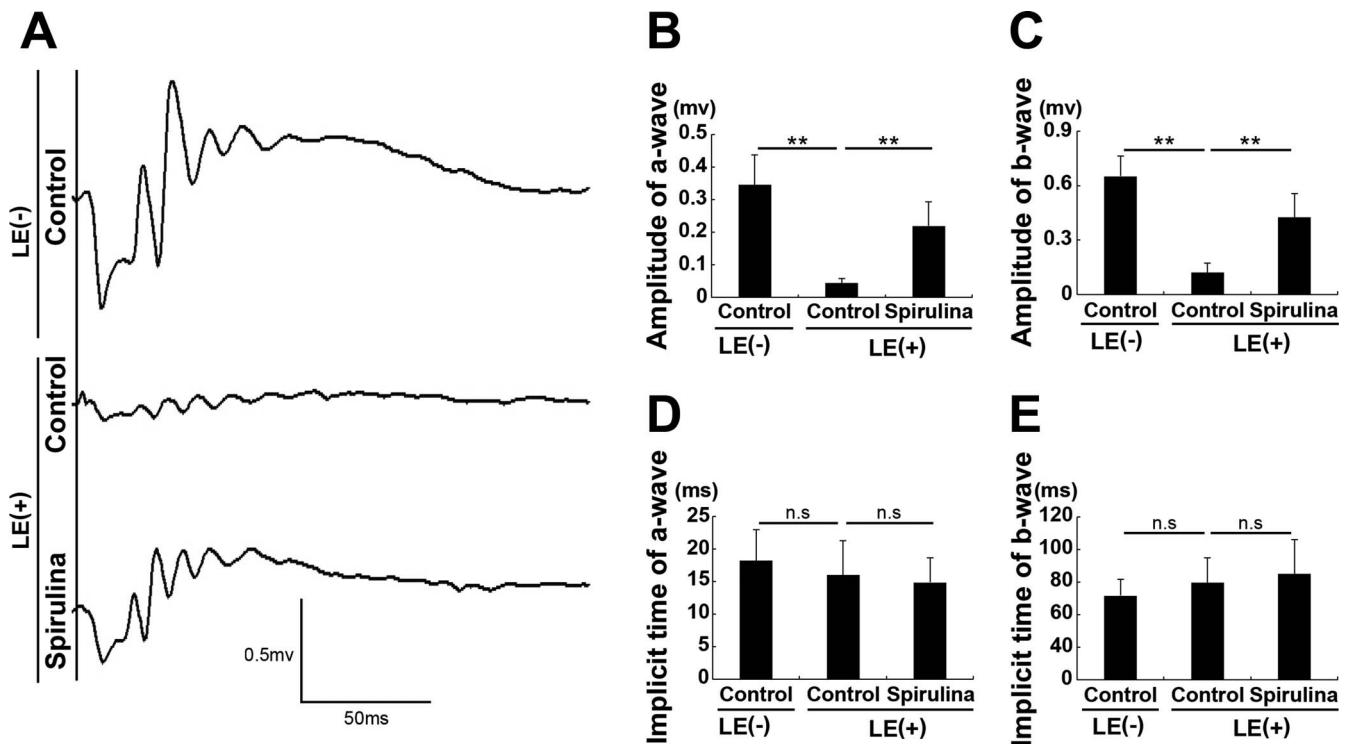


Figure 1. Spirulina protected against light-induced impairment of visual function. (A) Representative waveforms from an individual mouse recorded by ERG 4 days after light exposure. (B, C) The amplitudes of both the a- and b-waves were reduced after light exposure, which were attenuated by dietary Spirulina supplementation. (D, E) The implicit times of the a- and b-waves were not changed. LE, light exposure. LE (-) + control diet; LE (+) + control diet; and LE (+) + Spirulina-supplemented diet. $n = 5$ in each group. $^{**}P < 0.01$.

kits (R&D Systems, Minneapolis, MN), and a spectrometer (Wallac ARVO SX 1420 Multilabel Counter; Perkin-Elmer). All procedures were performed according to the manufacturers' instructions.

Statistical Analysis

Results are expressed as mean \pm standard deviation (SD). A one-way analysis of variance (ANOVA) with Tukey post-hoc tests were used to assess statistical significance between the groups using commercially available software (IBM SPSS Ver 23; IBM Corp, Armonk, NY). Results were considered significant if $P < 0.05$.

Results

Spirulina Protects Against Light-Induced Visual Impairment

In the control-diet group, ERG demonstrated reduction in amplitudes of both a- and b-waves 4 days after light exposure compared with control diet-fed and nonlight-exposed mouse group (Figs. 1A–E).

These data indicated photoreceptor function, represented by the a-wave, was impaired by the light exposure at this time point, likely with a subsequent reduction in the electrical responses in the retina (represented by the b-wave). This finding is consistent with our previous studies.^{30,31,38,39} However, in mice from the Spirulina-supplementation group, light-induced amplitude reductions in both a- and b-waves were suppressed compared with the control-diet group at the same time point after light exposure.

Spirulina Prevents Light-Induced Histologic Changes in the Retina

We analyzed the retinas for histologic changes at the time point when ERG was recorded (Figs. 2A–C). The thickness of the photoreceptor layer, outer nuclear layer (ONL), and length of outer segments (OSs) where visual pigments are distributed in the photoreceptor cells were reduced. These changes were significantly attenuated in the Spirulina supplementation group, indicating that Spirulina preserved photoreceptor cell number, and OS length in the remaining photoreceptor cells against photostress.

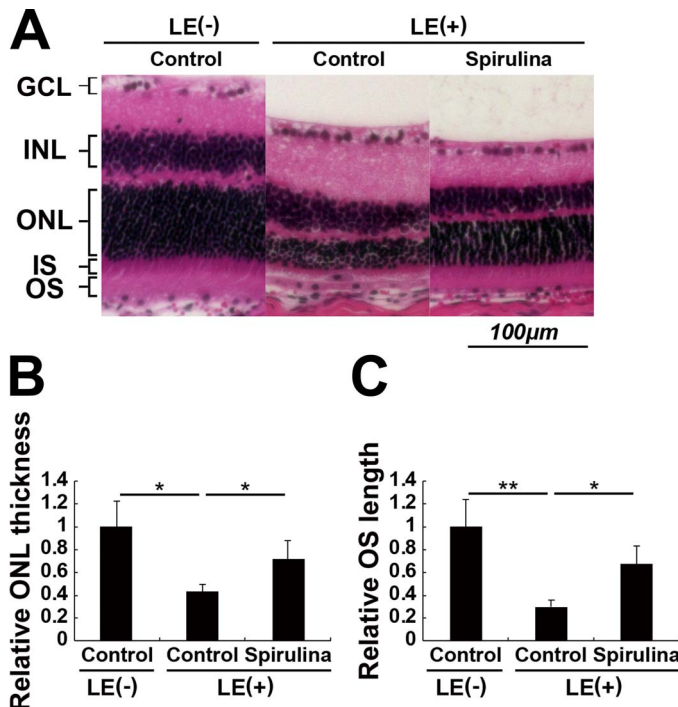


Figure 2. Spirulina suppressed light-induced histological changes in the retina. (A) The hematoxylin and eosin–stained retinal sections 4 days after light exposure. (B, C) The thickness of the ONL and the length of the OSs of the photoreceptor cells were reduced after light exposure, which were significantly attenuated by Spirulina supplementation. GCL, ganglion cell layer; INL, inner nuclear layer; IS, inner segment. $n = 4$ in each group. * $P < 0.05$, ** $P < 0.01$. Scale bar, 100 μm .

There were no significant changes in the inner retinal layers, suggesting that the b-wave change in the ERG was most likely because of the difference in the input from the photoreceptor cells.

Spirulina Suppresses Light-Induced Photoreceptor Apoptosis and Degeneration

Next, we quantified apoptotic cells using the TUNEL assay. TUNEL-positive, apoptotic cells appeared in the ONL 2 days after light exposure (Figs. 3A, 3B). This is consistent with previous reports.^{34–37} In the Spirulina-supplementation group, the number of apoptotic cells was significantly lower than those in the light-exposed control-diet group at the same timepoint.

Then, we quantified the expression of retinal rhodopsin protein at the same 2-day timepoint (Figs. 3C, 3D). Rhodopsin protein expression was significantly decreased by light exposure, indicating a loss and degeneration of photoreceptor cells. This reduc-

tion was significantly attenuated in the Spirulina-supplementation group, indicating a protective effect of Spirulina supplementation against cell degeneration and death.

In addition, we analyzed the expression of GFAP, a marker for glial reactivation during retinal degeneration, 4 days after light exposure. We found that light exposure upregulated GFAP expression, which was attenuated by Spirulina (Fig. 3E). This result suggested that Spirulina suppressed Müller glial cell reactivation, which may be related to photoreceptor degeneration.

Spirulina Suppresses Light-Induced ROS Accumulation in the Retina

Although Spirulina supplementation includes antioxidant compounds by its nature (Table), it was unclear whether this affected levels of retinal ROS. We found that light exposure significantly increased levels of retinal ROS at 6 hours after exposure, as measured by DCFH and ROS Brite 700 assays (Figs. 4A, 4B). Further, this increase was significantly reduced by Spirulina supplementation.

Spirulina Preserves Expression of Antioxidative Molecules in the Retina

We further measured the levels of antioxidative enzymes. Light exposure induced both SOD2 and HO-1 mRNA expression in the retina at 6 hours, and this expression was preserved in the Spirulina-supplementation group (Figs. 5A, 5B). The light-induced upregulation of these molecules was consistent with the fact that these mRNAs are upregulated in response to ROS, which stabilizes and promotes the nuclear transfer of the transcription factor Nrf2.⁴⁰ Immunostaining against Nrf2 in the retinal section obtained 24 hours after light exposure revealed an induction of nuclear Nrf2 transported and activated by light exposure in rhodopsin-positive neurons, classified as photoreceptor cells (Fig. 5C). In addition, we found that the nuclear Nrf2 was preserved after Spirulina administration (Figs. 5C, 5D), suggesting that Spirulina administration stabilized Nrf2 in the photoreceptor cells to induce antioxidative enzymes irrespective of ROS level.

Spirulina Reduces Light-Induced Expression of MCP-1 in the Retina

MCP-1, a chemokine that modulates inflammation and cell–cell adhesion,⁴¹ was previously shown to have a critical role in light-induced retinal degenera-

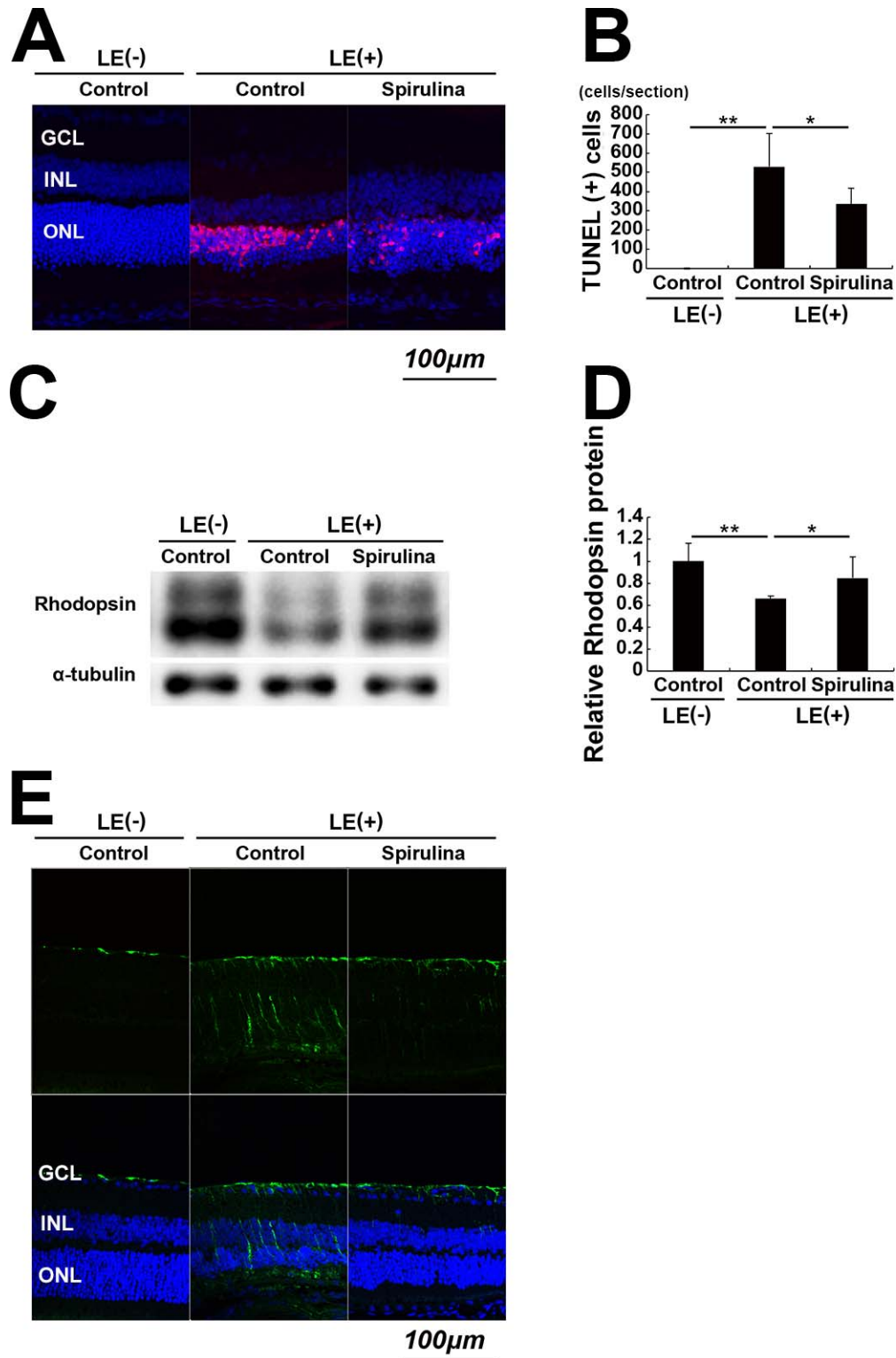


Figure 3. Spirulina suppressed light-induced photoreceptor apoptosis and degeneration. (A, B) The TUNEL assay, which was performed 2 days after light exposure. TUNEL-positive cells (red) appeared in the ONL after light exposure. Apoptotic cells were significantly reduced by Spirulina supplementation. (C, D) Immunoblot analysis. Rhodopsin protein in the retina was reduced 2 days after light exposure, which was attenuated by Spirulina supplementation. Rhodopsin and α -tubulin were measured sequentially in the same membrane, and rhodopsin monomer bands and α -tubulin bands are shown separately. (E) Staining for GFAP was performed 4 days after light exposure. Light-induced increases in GFAP expression were attenuated by Spirulina supplementation. $n = 4$ in each group. $*P < 0.05$, $**P < 0.01$. Scale bar, 100 μ m.

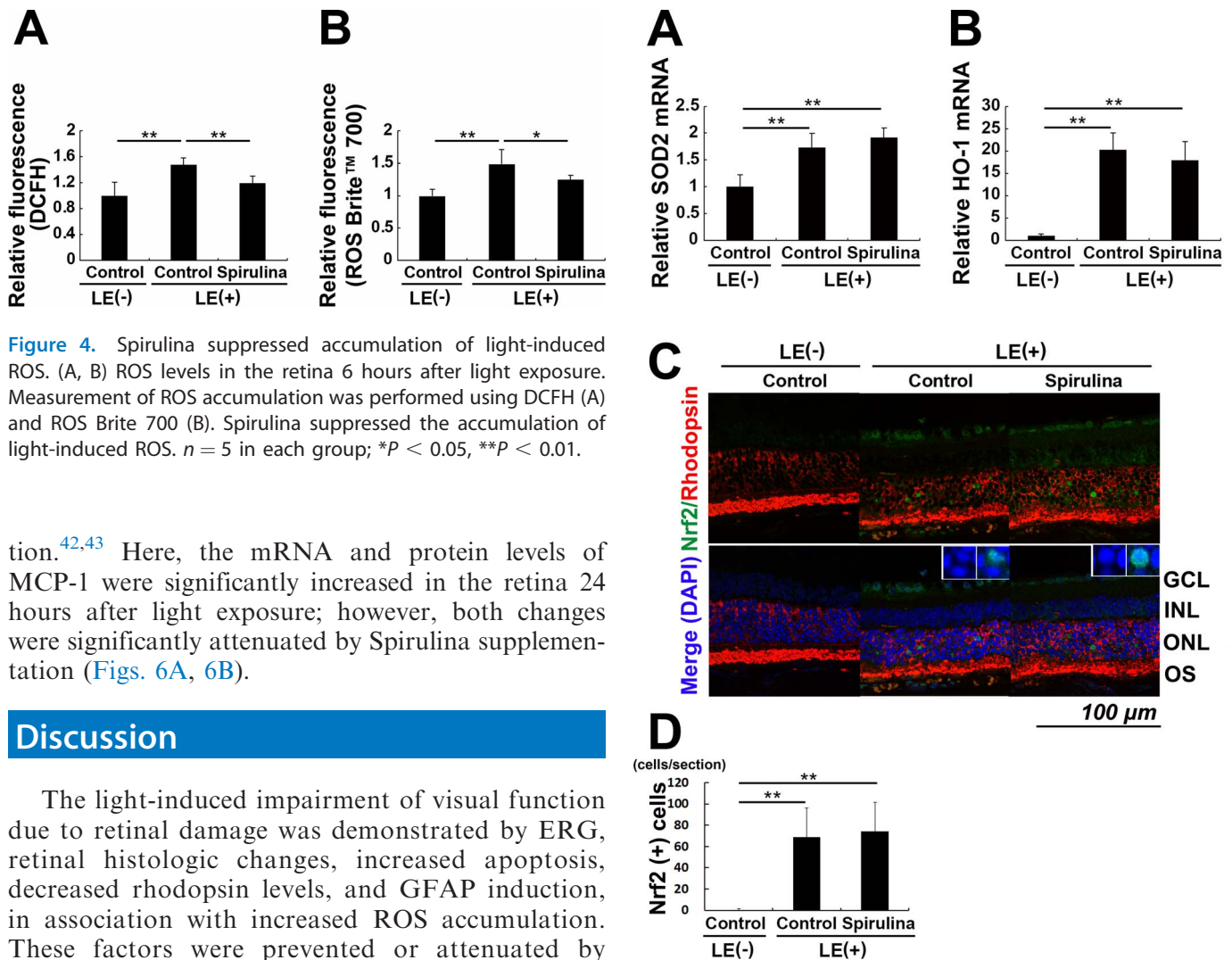


Figure 4. Spirulina suppressed accumulation of light-induced ROS. (A, B) ROS levels in the retina 6 hours after light exposure. Measurement of ROS accumulation was performed using DCFH (A) and ROS Brite 700 (B). Spirulina suppressed the accumulation of light-induced ROS. $n = 5$ in each group; * $P < 0.05$, ** $P < 0.01$.

tion.^{42,43} Here, the mRNA and protein levels of MCP-1 were significantly increased in the retina 24 hours after light exposure; however, both changes were significantly attenuated by Spirulina supplementation (Figs. 6A, 6B).

Discussion

The light-induced impairment of visual function due to retinal damage was demonstrated by ERG, retinal histologic changes, increased apoptosis, decreased rhodopsin levels, and GFAP induction, in association with increased ROS accumulation. These factors were prevented or attenuated by continuous dietary Spirulina supplementation. In addition, Spirulina preserved antioxidative enzyme expression, most likely by preserving the nuclear Nrf2 expression in the photoreceptor cells. Spirulina also suppressed photostress-mediated MCP-1 expression.

The concept that Spirulina and light damage both act primarily at the photoreceptor level is supported by the fact that the light-induced photoreceptor dysfunction seen on ERG is consistent with light-induced tissue damage that we identified histologically, such as thinning of the ONL and photoreceptor cell layer and shortening of photoreceptor cell outer segments (OSs). Notably, these histopathologic changes were clearly attenuated by Spirulina supplementation. Furthermore, the light-induced reduction in ONL thickness was observed in association with a restriction of TUNEL-positive, apoptotic cells to photoreceptor cells. This observation is consistent with previous studies.^{14,30,31,33,38} In the present study,

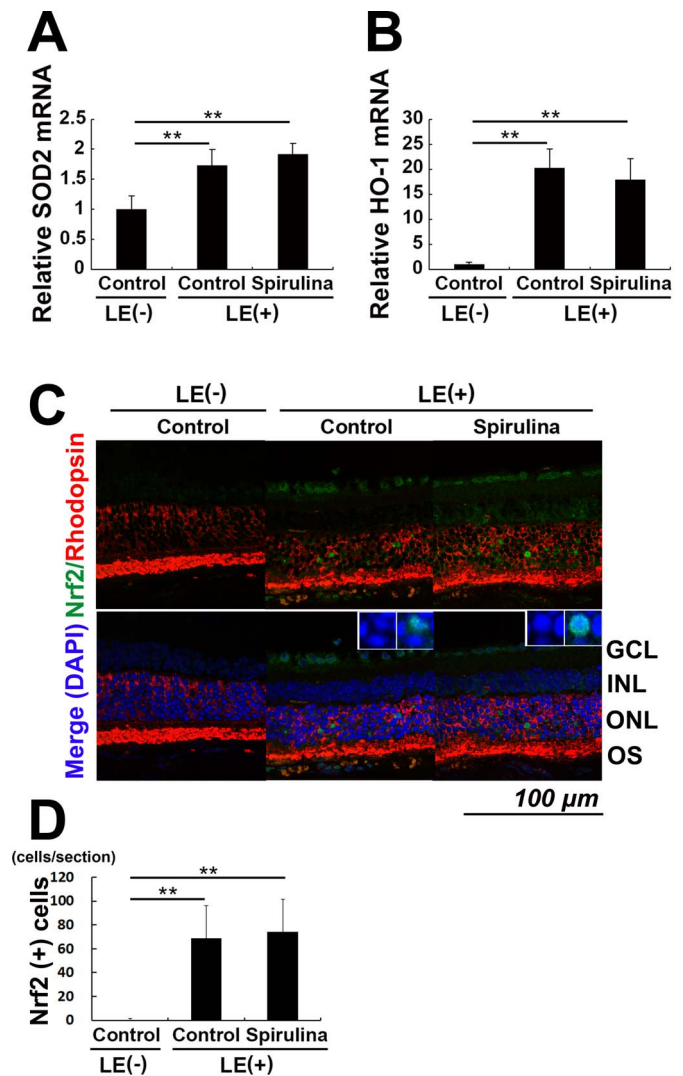


Figure 5. Spirulina preserved expression of antioxidative molecules in the retina. (A, B) The mRNA levels of SOD2 (A) and HO-1 (B) in the retina were increased 6 hours after light exposure, both with and without Spirulina supplementation. (C) Immunohistochemistry for rhodopsin and Nrf2, a transcription factor upstream of SOD2 and HO-1, with nuclear counter staining with DAPI 24 hours after light exposure. *Insets* show magnified regions. (C, D) Nrf2 was expressed in the photoreceptor nuclei after light exposure, a condition preserved after Spirulina administration. $n = 5$ in each group; ** $P < 0.01$. Scale bar, 100 μm .

Spirulina supplementation decreased the number of apoptotic photoreceptor cells, which explained the preservation of ONL thickness found in the Spirulina-supplementation group. Taken together, these data indicated that Spirulina increased photoreceptor survival under conditions of intense photostress.

Rhodopsin, the pigment that receives photons and converts them into electrical activity, is concentrated

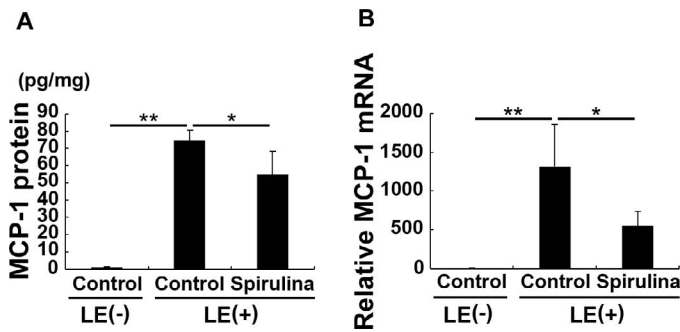


Figure 6. Spirulina reduced light-induced MCP-1 expression in the retina. (A) MRNA and (B) protein levels of retinal MCP-1 24 hours after light exposure. Light exposure increased the levels of MCP-1 at both mRNA and protein levels. However, these increases were significantly attenuated by Spirulina supplementation. $n = 5$ in each group (A) and $n = 6$ in each group (B). * $P < 0.05$; ** $P < 0.01$.

in the OS.⁴⁴ Rhodopsin knockout mice demonstrated reduced OS length.⁴⁵ Reduction in rhodopsin protein after light exposure in the current study may have induced OS thinning and degeneration of the photoreceptor cells that remained after light exposure. Thus, the postlight-exposure preservation of rhodopsin levels by Spirulina supplementation may explain the prevention of light-induced OS thinning.

Furthermore, we observed an increase in GFAP expression following light stimulation that corresponded with reactivation and pathologic changes in Müller glial cells. This may have been caused by photoreceptor cell degeneration and caused photoreceptor cell degeneration via glial-neuronal interactions. Therefore, the suppressive effect of Spirulina on this reactivation may have also contributed to the photoreceptor protection that we observed.

ROS have well-documented pathologic effects in the retina; they negatively affect rhodopsin levels^{13,30,31,33,46,47} and increase apoptosis.^{14,30,33,38,48} Lipopolysaccharide-induced uveitis and retinitis models have not reported apoptotic photoreceptors; however, rhodopsin protein expression is reduced posttranscriptionally,^{47,49} which is ameliorated by antioxidants.^{14,46} Light-induced ROS accumulation in the retina causes photoreceptor cell apoptosis^{14,30,31,33}; however, blocking light stimuli,^{32,33} administering antioxidants,^{14,31} and inhibiting the inflammatory mediator angiotensin II³⁰ decreases ROS and attenuates light-induced photoreceptor apoptosis. Moreover, enhancing ROS accumulation by removing antioxidants from the culture medium

induces retinal neuronal cell death in vitro,⁴⁸ which indicated that there is a direct apoptosis-inducing effect of ROS. In the present study, reduced rhodopsin protein expression and apoptosis were attenuated by Spirulina supplementation, most likely due to the suppression of retinal ROS accumulation.

The components of the carotenoids, Spirulina, β -carotenin, and zeaxanthin, are lipophilic, exist in the cellular membrane, and can scavenge ROS.^{2,50–53} Additionally, another component of Spirulina, c-phycoerythrin, is a water-soluble, pigment-protein complex that can be transferred intracellularly with antioxidant and radical-scavenging activity.⁵⁴ These factors may have scavenged retinal ROS in the current study. Interestingly, zeaxanthin, a xanthophyll, may have other relevant actions. Another xanthophyll, lutein, induces expression of phase-II antioxidative enzymes, such as SOD2 and HO-1, irrespective of ROS levels.^{9,10} In this study, Spirulina preserved the expression of Nrf2, which was degraded under the control condition, and antioxidative enzyme despite a reduction of ROS accumulation; these results are consistent with those of previous studies in fish.^{18,55} Therefore, Spirulina may preserve Nrf2 expression independently of ROS levels via the effects of these components. Alternatively, Spirulina involves various proteins, which could have biological activities¹⁸; protein contents may have induced Nrf2 stabilization and antioxidative enzymes. MCP-1, which is involved in AMD pathogenesis⁵⁶ and disrupts cell-cell junctions⁴¹ to make the tissue vulnerable to damage, was suppressed by Spirulina under the photostressed condition; this may also provide protective effects for the retina. Spirulina contains multiple phytochemicals, including the vitamins and carotenoids in the AREDS formula,^{5,6} and proteins that could act through a variety of pathways to protect against oxidative damage. Moreover, it can lower the risk of AMD by reducing body mass index^{25,28} and actually reduce oxidative markers in the serum of COPD patients.¹⁸ These effects may be advantageous for its use as an antioxidant nutritional supplement.

In summary, light-induced photoreceptor death, retinal degeneration, and subsequent visual impairment were suppressed by dietary Spirulina supplementation in mice. Although further studies are required, Spirulina could be useful in suppressing retinal damage and the progression of diseases, such as AMD.

Acknowledgments

We thank all the members of the Laboratory of Retinal Cell Biology (RCB Lab).

Spirulina was provided by DIC LIFETEC CO., Ltd.

Disclosure: **T. Okamoto**, None; **H. Kawashima**, None; **H. Osada**, None; **E. Toda**, None; **K. Homma**, None; **N. Nagai**, None; **Y. Imai**, DIC LIFETEC CO., Ltd (E); **K. Tsubota**, None; **Y. Ozawa**, DIC LIFETEC CO., Ltd (F)

*Tomohiro Okamoto and Hirohiko Kawashima are equally contributing first authors.

References

- Datta S, Cano M, Ebrahimi K, Wang L, Handa JT. The impact of oxidative stress and inflammation on RPE degeneration in non-neovascular AMD. *Prog Retin Eye Res.* 2017;60:201–218.
- Lambert NG, ElShelmani H, Singh MK, et al. Risk factors and biomarkers of age-related macular degeneration. *Prog Retin Eye Res.* 2016;54:64–102.
- Ding X, Patel M, Chan CC. Molecular pathology of age-related macular degeneration. *Prog Retin Eye Res.* 2009;28:1–18.
- Jager RD, Mieler WF, Miller JW. Age-related macular degeneration. *N Engl J Med.* 2008;358:2606–2617.
- A randomized, placebo-controlled, clinical trial of high-dose supplementation with vitamins C and E and beta carotene for age-related cataract and vision loss: AREDS report no. 9. *Arch Ophthalmol.* 2001;119:1439–1452.
- Chew EY, SanGiovanni JP, Ferris FL, et al. Lutein/zeaxanthin for the treatment of age-related cataract: AREDS2 randomized trial report no. 4. *JAMA Ophthalmol.* 2013;131:843–850.
- Sasaki M, Shinoda H, Koto T, Uchida A, Tsubota K, Ozawa Y. Use of micronutrient supplement for preventing advanced age-related macular degeneration in Japan. *Arch Ophthalmol.* 2012;130:254–255.
- Izumi-Nagai K, Nagai N, Ohgami K, et al. Macular pigment lutein is antiinflammatory in preventing choroidal neovascularization. *Arterioscler Thromb Vasc Biol.* 2007;27:2555–2562.
- Kamoshita M, Toda E, Osada H, et al. Lutein acts via multiple antioxidant pathways in the photo-stressed retina. *Sci Rep.* 2016;6:30226.
- Miyake S, Kobayashi S, Tsubota K, Ozawa Y. Phase II enzyme induction by a carotenoid, lutein, in a PC12D neuronal cell line. *Biochem Biophys Res Commun.* 2014;446:535–540.
- Ozawa Y, Sasaki M, Takahashi N, Kamoshita M, Miyake S, Tsubota K. Neuroprotective effects of lutein in the retina. *Curr Pharm Des.* 2012;18:51–56.
- Sasaki M, Ozawa Y, Kurihara T, et al. Neurodegenerative influence of oxidative stress in the retina of a murine model of diabetes. *Diabetologia.* 2010;53:971–979.
- Sasaki M, Ozawa Y, Kurihara T, et al. Neuroprotective effect of an antioxidant, lutein, during retinal inflammation. *Invest Ophthalmol Vis Sci.* 2009;50:1433–1439.
- Sasaki M, Yuki K, Kurihara T, et al. Biological role of lutein in the light-induced retinal degeneration. *J Nutr Biochem.* 2012;23:423–429.
- Ozawa Y, Kurihara T, Sasaki M, et al. Neural degeneration in the retina of the streptozotocin-induced type 1 diabetes model. *Exp Diabetes Res.* 2011;2011:108328.
- Kamata K, Piao Z, Suzuki S, et al. Spirulina-templated metal microcoils with controlled helical structures for THz electromagnetic responses. *Sci Rep.* 2014;4:4919.
- Nicoletti M. Microalgae nutraceuticals. *Foods.* 2016; 5.
- Wu Q, Liu L, Miron A, Klimova B, Wan D, Kuca K. The antioxidant, immunomodulatory, and anti-inflammatory activities of Spirulina: an overview. *Arch Toxicol.* 2016;90:1817–1840.
- Gutierrez-Salmean G, Fabila-Castillo L, Chamorro-Cevallos G. Nutritional and toxicological aspects of spirulina (*Arthrospira*). *Nutr Hosp.* 2015;32:34–40.
- Marles RJ, Barrett ML, Barnes J, et al. United States pharmacopeia safety evaluation of Spirulina. *Crit Rev Food Sci Nutr.* 2011;51:593–604.
- Karkos PD, Leong SC, Karkos CD, Sivaji N, Assimakopoulos DA. Spirulina in clinical practice: evidence-based human applications. *Evid Based Complement Alternat Med.* 2011;2011:531053.
- Ismail M, Hossain MF, Tanu AR, Shekhar HU. Effect of Spirulina intervention on oxidative stress, antioxidant status, and lipid profile in chronic obstructive pulmonary disease patients. *Biomed Res Int.* 2015;2015:486120.

23. Kalafati M, Jamurtas AZ, Nikolaidis MG, et al. Ergogenic and antioxidant effects of Spirulina supplementation in humans. *Med Sci Sports Exerc.* 2010;42:142–151.
24. Cingi C, Conk-Dalay M, Cakli H, Bal C. The effects of Spirulina on allergic rhinitis. *Eur Arch Otorhinolaryngol.* 2008;265:1219–1223.
25. Miczke A, Szulinska M, Hansdorfer-Korzon R, et al. Effects of spirulina consumption on body weight, blood pressure, and endothelial function in overweight hypertensive Caucasians: a double-blind, placebo-controlled, randomized trial. *Eur Rev Med Pharmacol Sci* 2016;20:150–156.
26. Pabon MM, Jernberg JN, Morganti J, et al. A Spirulina-enhanced diet provides neuroprotection in an alpha-synuclein model of Parkinson's disease. *PLoS One* 2012;7:e45256.
27. Mitra S, Siddiqui WA, Khandelwal S. C-Phycocyanin protects against acute tributyltin chloride neurotoxicity by modulating glial cell activity along with its anti-oxidant and anti-inflammatory property: a comparative efficacy evaluation with N-acetyl cysteine in adult rat brain. *Chem Biol Interact.* 2015;238:138–150.
28. Clemons TE, Milton RC, Klein R, Seddon JM, Ferris FL III. Risk factors for the incidence of Advanced Age-Related Macular Degeneration in the Age-Related Eye Disease Study (AREDS) AREDS report no. 19. *Ophthalmology.* 2005;112:533–539.
29. Narimatsu T, Ozawa Y, Miyake S, et al. Disruption of cell-cell junctions and induction of pathological cytokines in the retinal pigment epithelium of light-exposed mice. *Invest Ophthalmol Vis Sci.* 2013;54:4555–4562.
30. Narimatsu T, Ozawa Y, Miyake S, Nagai N, Tsubota K. Angiotensin II type 1 receptor blockade suppresses light-induced neural damage in the mouse retina. *Free Radic Biol Med.* 2014;71:176–185.
31. Osada H, Okamoto T, Kawashima H, et al. Neuroprotective effect of bilberry extract in a murine model of photo-stressed retina. *PLoS One* 2017;12:e0178627.
32. Narimatsu T, Negishi K, Miyake S, et al. Blue light-induced inflammatory marker expression in the retinal pigment epithelium-choroid of mice and the protective effect of a yellow intraocular lens material in vivo. *Exp Eye Res.* 2015;132:48–51.
33. Narimatsu T, Ozawa Y, Miyake S, et al. Biological effects of blocking blue and other visible light on the mouse retina. *Clin Exp Ophthalmol.* 2014;42:555–563.
34. Grimm C, Reme CE. Light damage as a model of retinal degeneration. *Methods Mol Biol.* 2013;935:87–97.
35. Wenzel A, Grimm C, Seeliger MW, et al. Prevention of photoreceptor apoptosis by activation of the glucocorticoid receptor. *Invest Ophthalmol Vis Sci.* 2001;42:1653–1659.
36. Reme CE, Grimm C, Hafezi F, Marti A, Wenzel A. Apoptotic cell death in retinal degenerations. *Prog Retin Eye Res.* 1998;17:443–464.
37. Hafezi F, Steinbach JP, Marti A, et al. The absence of c-fos prevents light-induced apoptotic cell death of photoreceptors in retinal degeneration in vivo. *Nat Med.* 1997;3:346–349.
38. Kubota S, Kurihara T, Ebinuma M, et al. Resveratrol prevents light-induced retinal degeneration via suppressing activator protein-1 activation. *Am J Pathol.* 2010;177:1725–1731.
39. Narimatsu T, Ozawa Y, Miyake S, et al. Biological effects of blocking blue and other visible light on the mouse retina. *Clin Exp Ophthalmol.* 2014;42:555–563.
40. Zhang M, An C, Gao Y, Leak RK, Chen J, Zhang F. Emerging roles of Nrf2 and phase II antioxidant enzymes in neuroprotection. *Prog Neurobiol.* 2013;100:30–47.
41. Stamatovic SM, Keep RF, Wang MM, Jankovic I, Andjelkovic AV. Caveolae-mediated internalization of occludin and claudin-5 during CCL2-induced tight junction remodeling in brain endothelial cells. *J Biol Chem.* 2009;284:19053–19066.
42. Rutar M, Natoli R, Provis JM. Small interfering RNA-mediated suppression of Ccl2 in Müller cells attenuates microglial recruitment and photoreceptor death following retinal degeneration. *J Neuroinflammation.* 2012;9:221.
43. Rutar M, Natoli R, Valter K, Provis JM. Early focal expression of the chemokine Ccl2 by Müller cells during exposure to damage-inducing bright continuous light. *Invest Ophthalmol Vis Sci.* 2011;52:2379–2388.
44. Baylor DA. Photoreceptor signals and vision. Proctor lecture. *Invest Ophthalmol Vis Sci.* 1987;28:34–49.
45. Lem J, Krasnoperova NV, Calvert PD, et al. Morphological, physiological, and biochemical changes in rhodopsin knockout mice. *Proc Natl Acad Sci U S A.* 1999;96:736–741.
46. Miyake S, Takahashi N, Sasaki M, Kobayashi S, Tsubota K, Ozawa Y. Vision preservation during retinal inflammation by anthocyanin-rich bilberry extract: cellular and molecular mechanism. *Lab Invest.* 2012;92:102–109.

47. Okamoto T, Ozawa Y, Kamoshita M, et al. The neuroprotective effect of rapamycin as a modulator of the mTOR-NF-kappaB axis during retinal inflammation. *PLoS One*. 2016;11:e0146517.
48. Ozawa Y, Yuki K, Yamagishi R, Tsubota K, Aihara M. Renin-angiotensin system involvement in the oxidative stress-induced neurodegeneration of cultured retinal ganglion cells. *Jpn J Ophthalmol*. 2013;57:126–132.
49. Ozawa Y, Nakao K, Kurihara T, et al. Roles of STAT3/SOCS3 pathway in regulating the visual function and ubiquitin-proteasome-dependent degradation of rhodopsin during retinal inflammation. *J Biol Chem*. 2008;283:24561–24570.
50. Harrison EH. Mechanisms of transport and delivery of vitamin A and carotenoids to the retinal pigment epithelium. *Mol Nutr Food Res*. 2019; e1801046.
51. Lima VC, Rosen RB, Farah M. Macular pigment in retinal health and disease. *Int J Retina Vitreous*. 2016;2:19.
52. Yonekura L, Nagao A. Intestinal absorption of dietary carotenoids. *Mol Nutr Food Res*. 2007;51: 107–115.
53. El-Beshbishy HA, Hassan MH, Aly HA, Doghish AS, Alghaithy AA. Crocin “saffron” protects against beryllium chloride toxicity in rats through diminution of oxidative stress and enhancing gene expression of antioxidant enzymes. *Ecotoxicol Environ Saf*. 2012;83:47–54.
54. Sonani RR, Patel S, Bhastana B, et al. Purification and antioxidant activity of phycocyanin from *Synechococcus* sp. R42DM isolated from industrially polluted site. *Bioresour Technol*. 2017;245: 325–331.
55. Abdelkhalek NK, Ghazy EW, Abdel-Daim MM. Pharmacodynamic interaction of *SSpirulina platensis* and deltamethrin in freshwater fish Nile tilapia, *Oreochromis niloticus*: impact on lipid peroxidation and oxidative stress. *Environ Sci Pollut Res Int*. 2015;22:3023–3031.
56. Suzuki M, Tsujikawa M, Itabe H, et al. Chronic photo-oxidative stress and subsequent MCP-1 activation as causative factors for age-related macular degeneration. *J Cell Sci*. 2012;125:2407–2415.