

Original Article



Cardioprotective Potential of an SGLT2 Inhibitor Against Doxorubicin-Induced Heart Failure

Chang-Myung Oh , MD, PhD^{1,*}, Sungsoo Cho , MD, PhD^{2,*}, Ji-Yong Jang , MD³, Hyeongseok Kim , MD, PhD⁴, Sukyung Chun, MS¹, Minkyung Choi, BS¹, Sangkyu Park , MD, PhD⁵, and Young-Guk Ko , MD, PhD⁶

OPEN ACCESS

Received: Jun 13, 2019
Revised: Jun 27, 2019
Accepted: Jul 5, 2019

Correspondence to Sangkyu Park, MD, PhD

Department of Biochemistry, College of Medicine, Catholic Kwandong University, 24, Beomil-ro 579beon-gil, Gangneung 25601, Korea.
E-mail: 49park@cku.ac.kr





Young-Guk Ko, MD, PhD
Division of Cardiology, Severance Cardiovascular Hospital, Yonsei University College of Medicine, 50, Yonsei-ro, Seodaemun-gu, Seoul 03722, Korea.
E-mail: ygko@yuhs.ac

*Chang-Myung Oh and Sungsoo Cho contributed equally to this work.

Copyright © 2019. The Korean Society of Cardiology

This is an Open Access article distributed under the terms of the Creative Commons Attribution Non-Commercial License (<https://creativecommons.org/licenses/by-nc/4.0>) which permits unrestricted noncommercial use, distribution, and reproduction in any medium, provided the original work is properly cited.

ORCID iDs

Chang-Myung Oh  <https://orcid.org/0000-0001-6681-4478>
Sungsoo Cho  <https://orcid.org/0000-0003-2059-1584>
Ji-Yong Jang  <https://orcid.org/0000-0003-2842-7500>
Hyeongseok Kim  <https://orcid.org/0000-0002-7093-0399>

¹Division of Endocrinology and Metabolism, CHA Bundang Medical Center, School of Medicine CHA University, Seongnam, Korea

²Division of Cardiovascular medicine, Department of Internal medicine, Dankook University Hospital, Dankook University School of Medicine, Cheonan, Korea

³Division of Cardiology, National Health Insurance Service Ilsan Hospital, Goyang, Korea

⁴Graduate School of Medical Science and Engineering, Korea Advanced Institute of Science and Technology, Daejeon, Korea

⁵Department of Biochemistry, College of Medicine, Catholic Kwandong University, Gangneung, Korea

⁶Division of Cardiology, Severance Cardiovascular Hospital, Yonsei University College of Medicine, Seoul, Korea

ABSTRACT

Background and Objectives: Recent studies have shown that sodium-glucose co-transporter 2 (SGLT2) inhibitors reduce the risk of heart failure (HF)-associated hospitalization and mortality in patients with diabetes. However, it is not clear whether SGLT2 inhibitors have a cardiovascular benefit in patients without diabetes. We aimed to determine whether empagliflozin (EMPA), an SGLT2 inhibitor, has a protective role in HF without diabetes.

Methods: Cardiomyopathy was induced in C57BL/6J mice using intraperitoneal injection of doxorubicin (Dox). Mice with HF were fed a normal chow diet (NCD) or an NCD containing 0.03% EMPA. Then we analyzed their phenotypes and performed in vitro experiments to reveal underlying mechanisms of the EMPA's effects.


Results: Mice fed NCD with EMPA showed improved heart function and reduced fibrosis. In vitro studies showed similar results. Phloridzin, a non-specific SGLT inhibitor, did not show any protective effect against Dox toxicity in H9C2 cells. SGLT2 inhibitor can cause increase in blood ketone levels. Beta hydroxybutyrate (β OHB), which is well known ketone body associated with SGLT2 inhibitor, showed a protective effect against Dox in H9C2 cells and in Dox-treated mice. These results suggest elevating β OHB might be a convincing mechanism for the protective effects of SGLT2 inhibitor.

Conclusions: SGLT2 inhibitors have a protective effect in Dox-induced HF in mice. This implied that SGLT2 inhibitor therapy could be a good treatment strategy even in HF patients without diabetes.

Keywords: Heart failure; Doxycycline; Sodium-Glucose Transporter 2 Inhibitors

Sangkyu Park 

<https://orcid.org/0000-0001-5525-2860>

Young-Guk Ko 

<https://orcid.org/0000-0001-7748-5788>

Funding

This research was supported by the Basic Science Research Program through the National Research Foundation of Korea (NRF) funded by the Ministry of Education (2016R1A6A3A04010466 to Chang-Myung Oh) and by a research grant from the Korean Cardiac Research Foundation (201702-02 to Sungsoo Cho).

Conflict of Interest

The authors have no financial conflicts of interest.

Author Contributions

Data curation: Oh CM, Kim H, Chun S, Choi M; Funding acquisition: Oh CM, Cho S; Investigation: Oh CM, Cho S; Methodology: Oh CM, Cho S; Resources: Oh CM; Supervision: Park S; Validation: Jang JY, Park S; Visualization: Jang JY; Writing - original draft: Oh CM, Cho S, Park S; Writing - review & editing: Oh CM, Cho S, Park S.

INTRODUCTION

Sodium-glucose co-transporter 2 (SGLT2) inhibitors are a new class of anti-diabetic agents that improve glycemic control, and reduce body weight and blood pressure, as a monotherapy or in combination with other diabetes medication. Recent studies have shown that SGLT2 inhibitors reduce the risk of cardiovascular-related death and heart failure (HF) hospitalization in patients with type 2 diabetes.¹⁾ It has been proposed that SGLT2 inhibitors have several direct or indirect effects that prevent the progression of HF. Increased osmotic diuresis, reduced sympathetic tone, and whole-body metabolic shift from glucose to fat oxidation caused by SGLT2 inhibition might explain the cardiovascular benefits, in addition to its blood glucose-lowering effects.²⁾

Patients with type 2 diabetes have shown elevated serum ketone body levels after SGLT2 inhibitor treatment.³⁾ SGLT2 inhibition promotes ketone utilization as an energy source in the heart and this shift might provide an energy advantage to the failing heart.⁴⁾ The ketone body beta hydroxybutyrate (β OHB) is one of major metabolites (acetoacetate, acetone, and β OHB) from liver by fatty acid oxidation.⁵⁾ β OHB increases cardiac work efficiency and shows protective effects by reduces oxidative stress in several animal studies.^{6,7)}

Interestingly, SGLT2 inhibitors also increase glycosuria and reduce body weight in non-diabetic subjects, and these subjects without diabetes also showed elevated serum ketone body levels.^{8,9)} Therefore, we postulated that SGLT2 inhibitors would have beneficial effects on non-diabetic patients with congestive HF.

To test this hypothesis, we constructed a HF model in mice using doxorubicin (Dox). Dox is an effective anti-tumor drug that is widely used to inducing HF in animal studies.¹⁰⁾ Dox-induced cardiotoxicity is characterized by left ventricular dysfunction and cardiac hypertrophy, which lead to congestive HF. We fed a normal chow diet (NCD) containing an SGLT2 inhibitor, empagliflozin (EMPA), to Dox-treated mice and examined their cardiac function, and their molecular and histological phenotypes.

METHODS

Chemicals and reagents

Dox hydrochloride (D1515), phloridzin dihydrate (P3449), and β OHB (54920) were obtained from Sigma-Aldrich (St. Louis, MO, USA). EMPA (Boehringer Ingelheim, Ingelheim am Rhein, Germany) is a potent SGLT2 inhibitor. We made the EMPA diet by mixing EMPA in NCD (Harlan Teklad, Madison, WI, USA) at a concentration 300 mg/kg of diet.

Animals

Male C57BL/6J (B6J) mice were purchased from the Institute of Medical Science, University of Tokyo. The mice were housed at ambient temperature ($22\pm 1^\circ\text{C}$) in a specific pathogen-free facility under a 12 hours light-dark cycle. All diets and water were provided ad libitum. The serum β OHB levels of mice were measured using a β OHB Colorimetric Assay kit (Cayman Chemical, Ann Arbor, MI, USA) according to the manufacturer's protocol. All experiments were performed in accordance with relevant guidelines and regulations. Our animal protocol was designed to minimize pain and discomfort to the mice. For euthanasia, mice were continuously exposed to isoflurane during tissue sampling. All animal procedures were

approved by the Institutional Animal Care and Use Committee of CHA University (IACUC No. 160033, 170047). Our study did not involve human data or tissue.

Dox-induced cardiomyopathy experiment

We constructed acute cardiomyopathy and chronic cardiomyopathy mouse models as previously described.¹¹⁾ Male B6J mice (8-weeks-old, weighting 22–24 g) were randomly divided into 4 groups. Control group: B6J mice (n=5) were fed an NCD with phosphate-buffered saline (PBS) injection. EMPA group: B6J mice (n=5) were fed the EMPA diet with PBS injection. Dox group: B6J mice (n=5) were fed an NCD with Dox injection. Dox+EMPA group: B6J mice (n=5) were fed the EMPA diet with Dox injection. Acute cardiomyopathy was induced in the B6J mice by a single intraperitoneal (IP) injection of Dox (15 mg/kg). Diets were changed at night, 12 hours before PBS/Dox injection. To analyze the phenotype of these mice, all mice were sacrificed 2 weeks later. Chronic cardiomyopathy was induced by administering Dox at 2.5 mg/kg every other day for 12 days (cumulative dose=15 mg/kg). All mice were sacrificed 6 weeks later.

Mouse magnetic resonance imaging

Cardiac magnetic resonance imaging (MRI) was performed to assess the structural and functional changes in mice hearts by Dox-induced cardiotoxicity. Male B6J mice (10-weeks-old, n=5 per each group) were examined using a Mouse Agilent 9.4 Tesla MRI Scanner (Agilent Technologies, Santa Clara, CA, USA). Heart sizes were measured using Image J software and functional parameters were calculated as previously described.¹²⁾

Cell culture and materials

H9C2 cells (rat cardiac myoblasts) were purchased from the Korean Cell Line Bank (21446) and maintained in high glucose Dulbecco's modified Eagle's medium supplemented with 10% fetal bovine serum and 100 U penicillin/streptomycin. Cells were treated with various concentration of Dox (ranging from 0.1 to 10 μ M) and tested after 12 hours or 24 hours. Dox and Phloridzin dihydrate were dissolved in dimethyl sulfoxide (DMSO). DMSO was used as a control vehicle.

Cytotoxicity assay and adenosine triphosphate assay

The cytotoxic effects of Dox and protective effects of other drugs in vitro on H9C2 cells were measured as previously described.¹³⁾ The viability of H9C2 cells were analyzed using a 3-(4,5-dimethylthiazol-2-yl)-2,5-diphenyltetrazolium bromide based colorimetric assay using a Cell Proliferation Kit I (Sigma-Aldrich). Adenosine triphosphate (ATP) was measured using ATPLite Luminescence Assay System (PerkinElmer, Waltham, MA, USA).

Determination of mitochondrial membrane potential and reactive oxygen species

Mitochondrial membrane potential (MPP) and reactive oxygen species (ROS) were measured as previously described.¹⁴⁾ To measure the MPP and ROS, H9C2 cells were preincubated β OHB for 2 hours, and then with Dox for 12 hours in serum free media. For mitochondrial analysis, H9C2 cells were incubated for 30 minutes with 50 nM tetramethylrhodamine methyl ester (TMRM; Sigma-Aldrich). TMRM fluorescence images were obtained using confocal microscopy (Leica TCS SP5 II). Intracellular ROS were measured using 2',7'-dichlorodihydrofluorescein diacetate (H₂DCFDA) (Thermo Fisher Scientific, Waltham, MA, USA).

RNA isolation and quantitative real-time reverse transcription polymerase chain reaction

Total RNA was extracted using the TRIzol[®] reagent (Invitrogen, Carlsbad, CA, USA) according to the manufacturer's protocol. For complementary DNA synthesis, total RNA (1µg) was reverse transcribed with the Qiagen Quantitect Reverse Transcription Kit (Qiagen, Hilden, Germany) according to the manufacturer's protocols. Quantitative real-time polymerase chain reaction (PCR) was performed using a FastStart Essential DNA Green Master kit (Roche Life Sciences, Indianapolis, IN, USA). The primer sequences are provided in **Supplementary Table 1**.

Western blot analysis

Heart tissue lysates and whole-cell lysates were used for western blotting analysis. Proteins were separated by electrophoresis and transferred to membranes. The membranes were incubated with specific primary antibodies (1:1,000) recognizing β -actin (#4970), cleaved-caspase 3 (#9664), and C/EBP homologous protein (CHOP; #5554), purchased from Cell Signaling Technology (Danvers, MA, USA). The membranes were washed with Tris-buffered saline containing 0.05% Tween 20 and incubated with horseradish peroxidase-linked anti-rabbit immunoglobulin G (IgG) antibody (1:2,000; AP188p) or anti-mouse IgG antibody (1:2,000; AP160P) from Sigma-Aldrich. Signals were captured using a ChemiDoc MP system (Bio-Rad, Hercules, CA, USA). Densitometric analysis was performed using Image J software.

Histological analysis

Mouse hearts were harvested, fixed in 4% paraformaldehyde in PBS, dehydrated, and embedded in paraffin. Then, 5-µm-thick tissue sections were deparaffinized and stained with hematoxylin and eosin (H&E). Fibrosis was detected with Masson's trichrome staining (Abcam, Cambridge, UK) according to the manufacturer's protocol.

Statistical analysis

Data are presented as mean \pm standard error of mean. Differences between groups were evaluated for statistical significance using Student's t-test or 1-way analysis of variance followed by Tukey's post hoc test. The p values <0.05 were considered significant.

RESULTS

An sodium-glucose co-transporter 2 inhibitor attenuates Dox-induced cardiomyopathy in mice

To test our hypothesis that EMPA might improve cardiac function in HF, we induced cardiac toxicity in mice by Dox administration and then fed them with an EMPA diet. We divided these mice into 4 groups: control group, EMPA group, Dox group, and Dox+EMPA group. Two weeks after Dox/vehicle injection, the left ventricles (LVs) of the mice in these 4 groups were examined to analyze the effects of EMPA on mouse hearts. To evaluate whether EMPA protects against Dox-induced cardiomyopathy, functional analysis was performed by heart MRI. In the acute stage, Dox causes cardiac hypertrophy in mice.¹⁵⁾ The Dox+EMPA group showed body weight reduction after 2 weeks treatment but this change was not significant (**Supplementary Figure 1**). After 2 weeks of Dox treatment, mouse hearts showed hypertrophic changes (**Figure 1A and B**). As expected, EMPA reduced these pathological changes. The Dox+EMPA group displayed significantly reduced LV mass and improved fractional shortening compared with the Dox group (**Figure 1B and C, Supplementary Figure 2**). Masson's

trichrome staining revealed that EMPA reduced perivascular and interstitial fibrosis in mouse hearts treated with Dox (**Figure 1D-F** and **Supplementary Figure 3**). These results suggested that the SGLT2 inhibitor protects against Dox-induced cardiac toxicity *in vivo*.

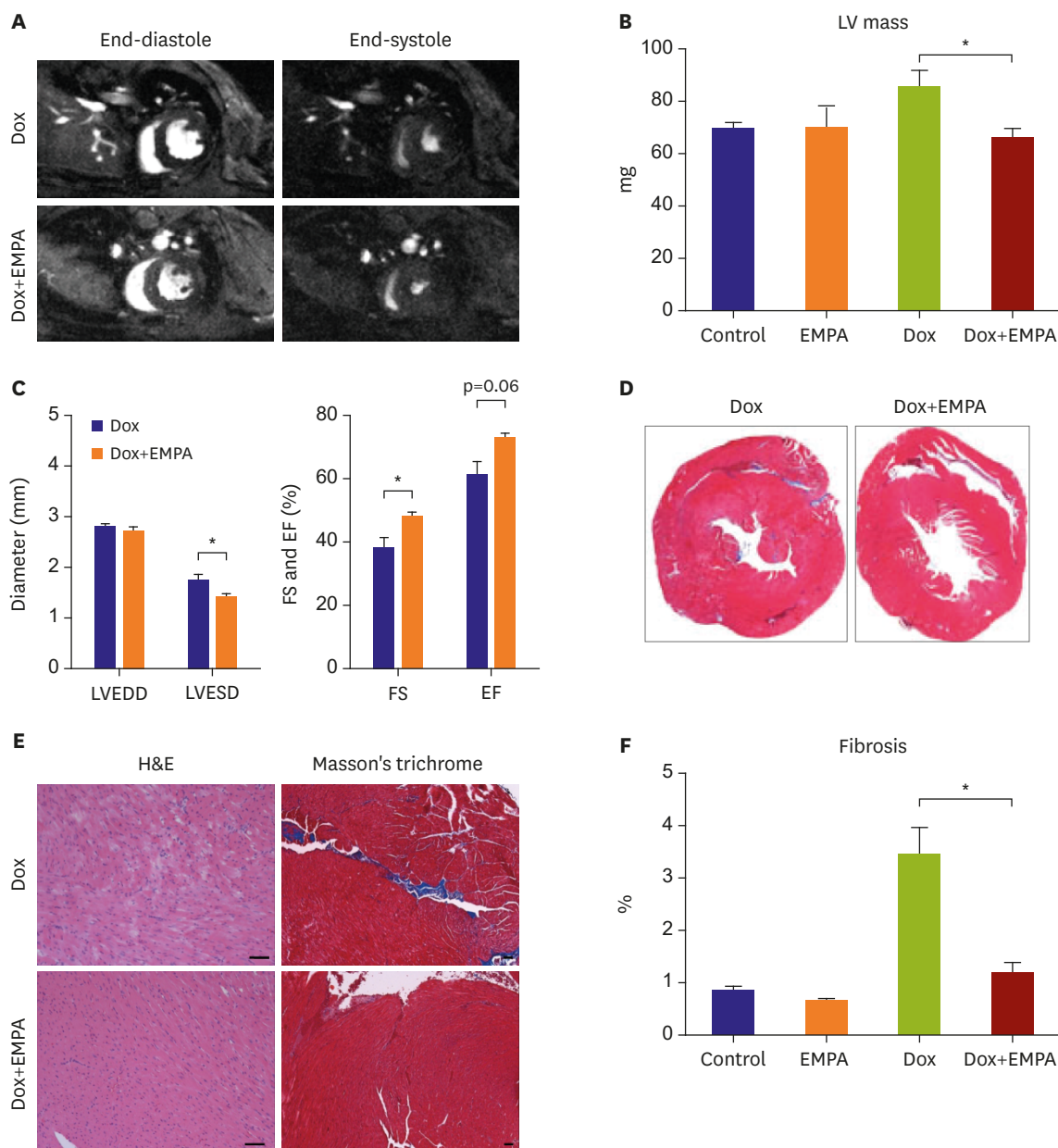


Figure 1. The SGLT2 inhibitor protects against Dox-induced cardiac toxicity. (A) Representative images of Dox-mediated changes in cardiac structure and function from cardiac MRI. (B) and (C) The Dox+EMPA group showed reduced LV mass, decreased LVESD, and improved FS compared with the Dox group. (D) Masson's trichrome stained cross-sections of mice, 2 weeks after single Dox injection. (E) Representative images of LV sections stained with H&E and with Masson's trichrome. The Dox+EMPA group showed less myocardial damage. (F) Quantification of interstitial fibrosis. Scale bar=50 μ m. Each bar represents mean \pm standard error of mean.

Dox = doxorubicin; EF = ejection fraction; EMPA = empagliflozin; FS = fractional shortening; H&E = hematoxylin and eosin; LV = left ventricle; LVEDD = left ventricular end diastolic diameter; LVESD = left ventricular end systolic diameter; MRI = magnetic resonance imaging; SGLT2 = sodium-glucose co-transporter 2. * $p < 0.05$.

Beta hydroxybutyrate protects against Dox-induced cardiotoxicity in vitro

We observed that an SGLT2 inhibitor has protective effects against Dox-induced cardiac injury in vivo. However, the exact mechanism underlying the cardio-protective effect of SGLT2 inhibitors is still unclear. The SGLTs are present in heart. However, the major SGLT is SGLT1, not SGLT2.¹⁶⁾

We checked the expression of *Sglt* genes in the mouse heart. As expected, *Sglt1* is expressed in both the kidney and LV. However, *Sglt2* gene expression was very low in the LV compared with its expression in the kidney (**Figure 2A and B**). To investigate the direct effect of SGLT in the heart, we treated H9C2 cells with phloridzin (PHL), a non-selective SGLT inhibitor. After 2 hours of pretreatment with PHL, H9C2 cells were incubated with Dox for 24 hours. As shown in **Figure 2C and D**, cell viability was significantly reduced after Dox treatment and PHL pretreatment did not show a protective effect on Dox-induced cytotoxicity. These results suggested that SGLT has no direct role in cardiomyocytes during Dox-induced cardiotoxicity.

We focused on β OHB, a ketone body that is increased in the blood after SGLT2 inhibition, even in non-diabetic conditions.⁹⁾¹⁷⁾¹⁸⁾ First, we treated H9C2 with β OHB at various

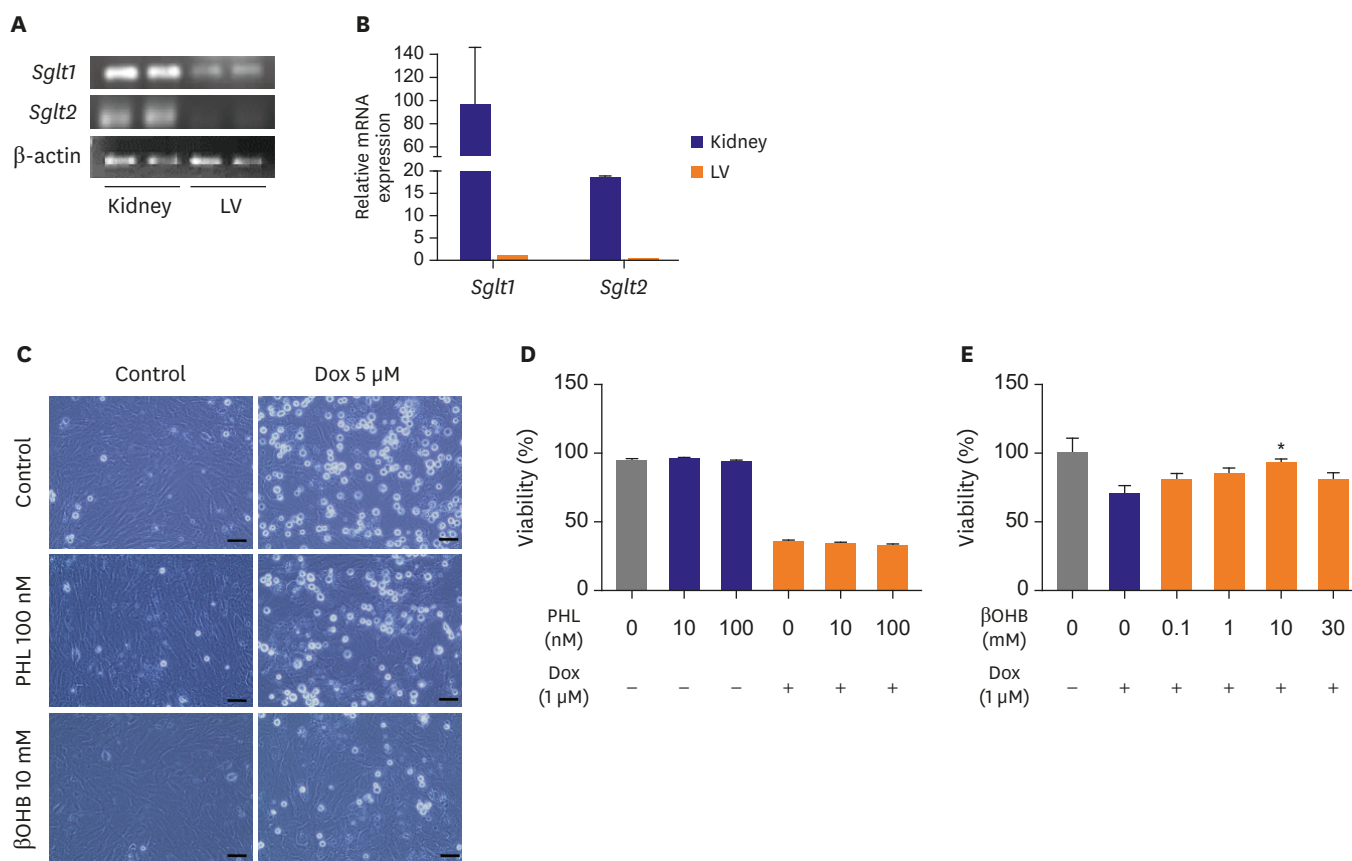


Figure 2. The SGLT inhibitor protects cardiomyocytes by increasing β OHB. (A) and (B) *Sglt1* and *Sglt2* mRNA expression in mouse LV and kidney by qRT-PCR. (C) Representative light microscopic images of H9C2 cells. H9C2 cells were stimulated with 5 μ M Dox or pre-treated with PHL or β OHB for 2 hours and then treated with 5 μ M Dox for 24 hours. (D) H9C2 cell viability of the PHL pre-treatment group by an MTT assay. (E) H9C2 cell viability of the β OHB pre-treatment group by an MTT assay. β OHB group showed improved cell viability under 1 μ M Dox-induced cardiotoxicity compared to non-treated group. Scale bar=50 μ m. Each bar represents mean \pm standard error of mean.

β OHB = beta hydroxybutyrate; Dox = doxorubicin; LV = left ventricle; mRNA = messenger RNA; MTT = 3-(4,5-dimethylthiazol-2-yl)-2,5-diphenyltetrazolium bromide; PHL = phloridzin; qRT-PCR = quantitative real-time reverse transcription polymerase chain reaction; SGLT = sodium-glucose co-transporter.

* $p < 0.05$ vs. Dox-treated group.

concentrations (100 μ M, 1 mM, 10 mM, and 30 mM) according to previous studies.¹⁸⁾¹⁹⁾ As shown in **Figure 2C and E**, β OHB pretreatment had significant protective effects against Dox-induced cardiotoxicity.

Beta hydroxybutyrate reduces reactive oxygen species and improves mitochondrial function

Increased free radical production is the major mechanism of Dox-induced cardiac injury.²⁰⁾ Therefore, we measured intracellular ROS generation in H9C2 cells using H₂DCFDA. H9C2 cells produced ROS after the addition of 5 μ M Dox. However, when H9C2 cells were pretreated for 2 hours with β OHB, Dox-induced ROS production was significantly decreased (**Figure 3A and B, Supplementary Figure 4**). We then performed a western blotting assay to detect cell stress markers. We found that the levels of both cleaved caspase 3 and CHOP were increased after Dox treatment. In contrast, β OHB pretreatment suppressed the levels of these proteins (**Figure 3C and D**).

Dox treatment also induces mitochondrial dysfunction in cardiomyocytes.²¹⁾ So, we measured the ATP levels after β OHB treatment. As expected, β OHB significantly increased intracellular ATP levels in H9C2 cells (**Figure 3E**). We then analyzed the MPP of Dox-treated H9C2 cells using TMRM fluorescent probe. Dox-treated H9C2 cells showed decreased uptake of TMRM. β OHB pretreatment restored the uptake of TMRM in H9C2 cells. These results suggested that β OHB protects cardiomyocytes from Dox-induced mitochondrial dysfunction (**Figure 3F and G**).

An sodium-glucose co-transporter 2 inhibitor protects the heart by increasing beta hydroxybutyrate levels

Collectively, these in vitro results suggested that the cardio-protective effects of SGLT2 inhibition depend on elevated serum β OHB. We measured serum β OHB levels of our 4 groups of mice after 2 weeks of treatment. As expected, the β OHB level was elevated in EMPA diet-fed groups (EMPA and Dox+EMPA) (**Figure 4A**). We then examined whether the EMPA diet reduced Dox-induced ROS generation in the mouse heart in vivo. We analyzed antioxidant gene expression in the LVs from the 4 groups of mice. In the qPCR analysis, the Dox treated LVs showed reduced anti-oxidative gene expression and the EMPA diet restored this suppression induced by Dox treatment (**Figure 4B**).

We then investigated whether β OHB could reduce Dox-induced cardiomyopathy in vivo. After a single IP injection of Dox (15 mg/kg), mice were injected with saline or β OHB (20 mmol/kg), according to a previously described method.²²⁾ After 2 weeks of IP injection, mice were sacrificed, histological analysis showed preserved myofibril structure and reduced cardiac fibrosis in the LVs of mice treated with Dox+ β OHB compared with that in the LVs of mice treated with Dox (**Figure 4C and Supplementary Figure 5**).

In addition, we investigated whether EMPA could inhibit Dox-induced chronic structural changes, such as eccentric hypertrophy in the heart. We fed the EMPA diet to Dox-treated mice and sacrificed them 6 weeks after the last injection, as previously described.²³⁾ After 6 weeks of Dox injection, the hearts of Dox treated mice showed dilated cardiomyopathy (increased size and eccentric hypertrophy) (**Figure 4D**). The hearts of the EMPA diet-fed mice retained a similar size and structure to those of the control mice. Histological analysis also showed preserved myofibril structure and reduced cardiac fibrosis in the LVs of mice fed with Dox+EMPA compared with those of mice fed with Dox (**Figure 4E**). Collectively, these results

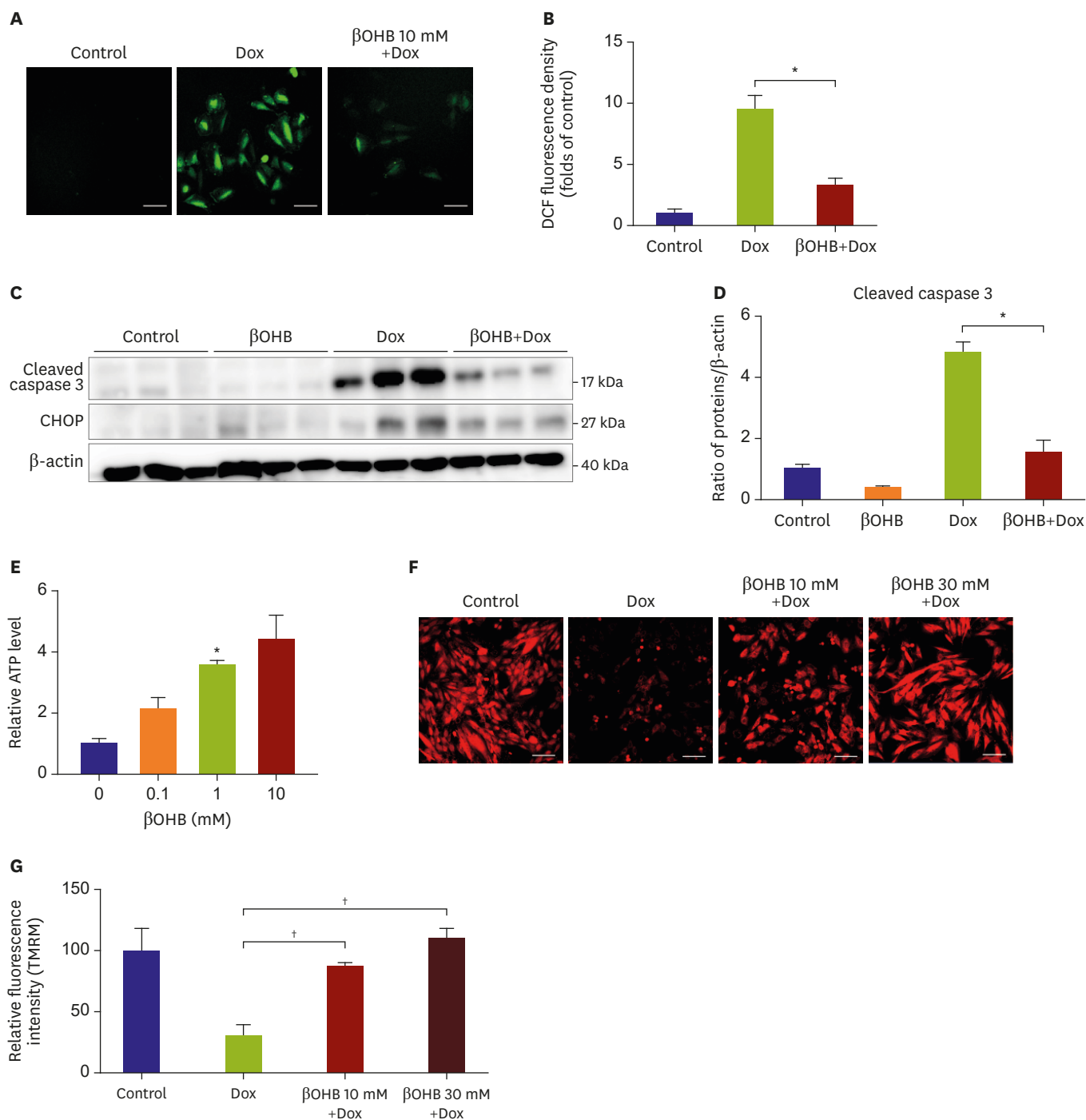


Figure 3. βOHB reduces ROS and improves mitochondrial function. (A) Representative confocal fluorescence images of H9C2 cells after Dox treatment. Higher level of ROS was detected by H₂DCFDA staining (green fluorescence). (B) Quantification of intracellular ROS levels. βOHB reduced ROS of H9C2 cells with Dox. (C) Representative images of western blotting of cleaved caspase 3 and CHOP. (D) Densitometry analysis of immunoreactive bands of cleaved caspase 3. βOHB reduced cleaved caspase 3 expression of H9C2 cells with Dox. (E) Intracellular ATP was measured using a firefly-based ATP assay kit. Calculated ATP contents were normalized to the total protein content. Data are shown relative to ATP levels of the control (non-treated H9C2 cells). βOHB (1mM) increased ATP production compared to control. (F) Representative confocal fluorescence images of H9C2 cells stained with TMRM fluorescence probe (red fluorescence). (G) Quantification of TMRM fluorescence. βOHB restored TMRM intensity of H9C2 cells with Dox. Scale bar=50 μm. Each bar represents mean±standard error of mean.

ATP = adenosine triphosphate; βOHB = beta hydroxybutyrate; CHOP = C/EBP homologous protein; DCF = 2',7'-dichlorofluorescein; Dox = doxorubicin; H₂DCFDA = 2',7'-dichlorodihydrofluorescein diacetate; ROS = reactive oxygen species; TMRM = tetramethylrhodamine methyl ester.

*p<0.05; †p<0.01.

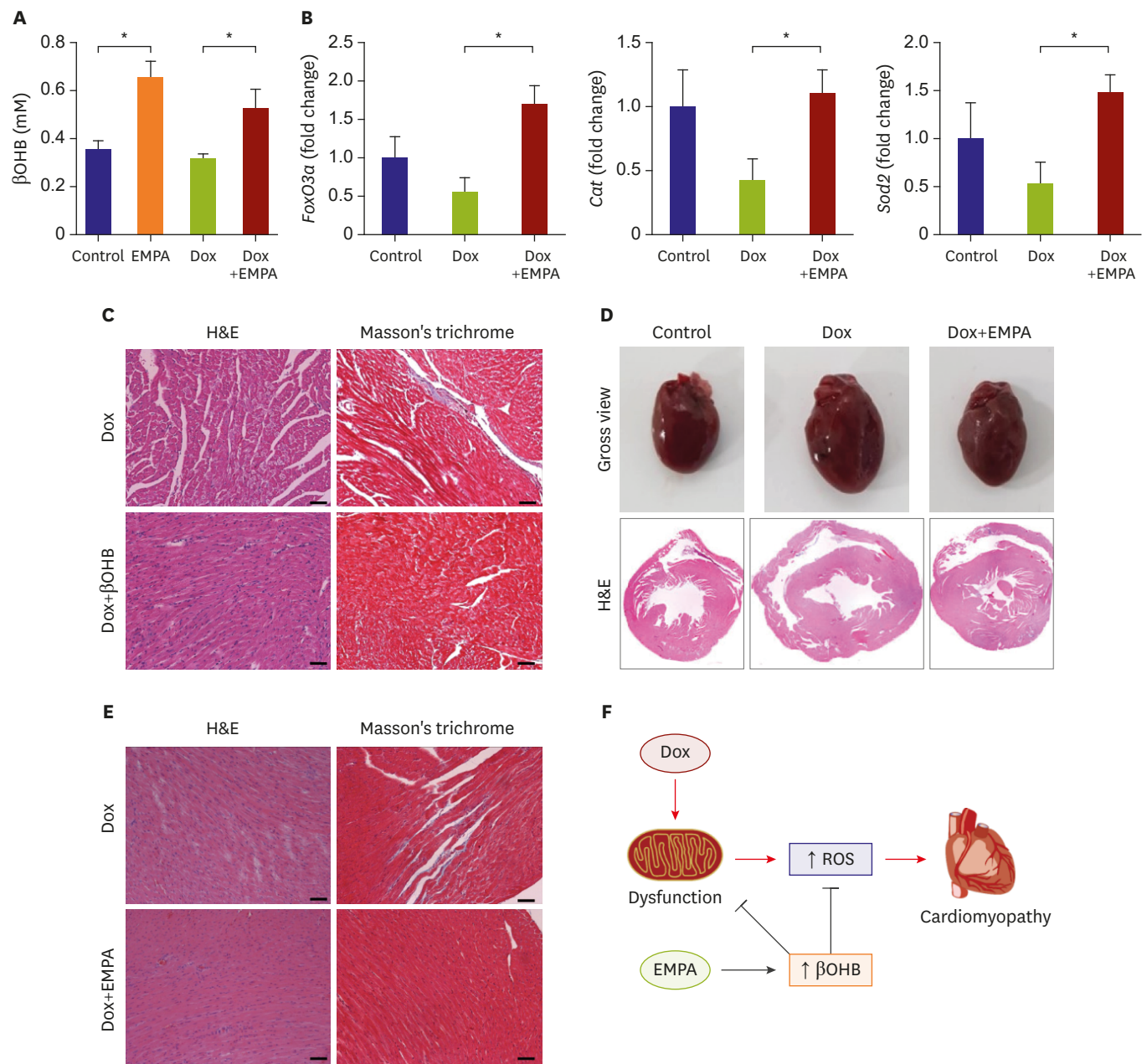


Figure 4. The SGLT2 inhibitor protects the heart by increasing β OHB. (A) Serum β OHB levels of mice, 2 weeks after single Dox (15 mg/kg) or saline injection. EMPA increased Serum β OHB levels of mice in both Control and Dox treated mice. (B) mRNA expression of *FoxO3a*, *Sod2*, and *Cat* (encoding catalase) in LV tissues of mice after single Dox or saline injection. EMPA increased these genes expression in LV tissues of mice with Dox. (C) Representative images of LV sections stained with H&E and with Masson's trichrome. Mice were injected daily with β OHB intraperitoneally after single Dox injection for 14 days. (D) Gross anatomical changes of Dox-treated hearts in a chronic model. (E) Representative images of LV sections stained with H&E and with Masson's trichrome. (F) A proposed model for the cardioprotective effect of the SGLT2 inhibitor against Dox-induced HF. Heart image was obtained and modified from Pixabay 2017 (<https://pixabay.com/en/heart-human-heart-anatomy-medicine-2028154>). Scale bar=50 μ m. Each bar represents mean \pm standard error of mean. β OHB = beta hydroxybutyrate; Dox = doxorubicin; EMPA = empagliflozin; H&E = hematoxylin and eosin; HF = heart failure; LV = left ventricle; mRNA = messenger RNA; ROS = reactive oxygen species; SGLT2 = sodium-glucose co-transporter 2. * p <0.05.

suggested that elevation β OHB by SGLT2 inhibition attenuated the oxidative stress induced by Dox treatment in mice.

DISCUSSION

SGLT2 inhibitors have shown beneficial effects on HF patients with type 2 diabetes.²⁴⁾ Our study was designed to investigate the role of SGLT2 inhibitors in the development of Dox-induced HF in mice, which is a well-known non-diabetic HF animal model. We demonstrated that the SGLT2 inhibitor attenuated Dox-induced cardiomyopathy in mice. Dox-treated mouse hearts showed cardiac hypertrophy and myocardial fibrosis, and the EMPA diet-fed mice showed reduced Dox-induced cardiomyopathy in acute (**Figure 1D and E**) and chronic models (**Figure 4D and E**).

EMPA-fed mice showed increased serum β OHB levels compared with NCD-fed mice (**Figure 4A**). These changes in non-diabetic mice after EMPA treatment are consistent with recent clinical data from humans.⁹⁾ As expected, β OHB improved cell viability (**Figure 2C**) and reduced ROS generation (**Figure 3A**) in Dox-treated H9C2 cells. Recent study supported these results about anti-oxidant properties of β OHB.²⁵⁾ β OHB also improves mitochondrial function and increases ATP production in pancreatic beta cells and neuronal cells.²⁶⁾²⁷⁾ In line with these findings, we found that β OHB increased intracellular ATP levels and restored mitochondrial dysfunction in cardiomyocytes (**Figure 3E and F**).

Several studies support our findings about the cardioprotective role of β OHB. Ketone bodies are effective energy source of failing heart and increase survival in aging mice.²⁶⁾²⁸⁾ Exogenous β OHB infusion protects ischemic injury in heart by reducing ROS and enhancing adenosine triphosphate production.²⁹⁾ These findings led us to speculate that ketone bodies have critical role in maintaining heart function and SGLT2 inhibitor acts indirectly on the heart by increasing blood β OHB levels.

We found that β OHB attenuated Dox-induced cardiotoxicity in vitro. However, in vivo, β OHB supplementation reduced Dox-induced myofibrillar loss and cardiac fibrosis at the microscopic level (**Figure 4C**) but did not demonstrate significant improvement in the gross morphological changes caused by Dox (**Supplementary Figure 6**). These results suggested that metabolic and hemodynamic effects of SGLT2 inhibitors, such as improved glucose homeostasis, lowering of blood pressure and weight loss, also have additional protective effects on heart function.²⁾

In summary, our study showed that an SGLT2 inhibitor could reduce Dox-mediated LV dysfunction. This protective effect is mediated by elevated β OHB levels. During SGLT2 inhibition, elevated β OHB levels attenuated ROS production and improved mitochondrial dysfunction in cardiomyocytes (**Figure 4F**). Our findings suggested that cardioprotective role of SGLT2 inhibitor indicates a new strategy to prevent HF in patients receiving Dox.

ACKNOWLEDGEMENTS

This research is based on Sungsoo Cho's doctoral dissertation.

SUPPLEMENTARY MATERIALS

Supplementary Table 1

Primer list for real-time PCR

[Click here to view](#)

Supplementary Figure 1

Body weight change after 14 days of treatment.

[Click here to view](#)

Supplementary Figure 2

FS and EF changes after 1 week Dox treatment. The EMPA group improved FS and EF compared with Control group. The Dox+EMPA group also showed improved FS and EF (p=0.06) compared with Dox group.

[Click here to view](#)

Supplementary Figure 3

H&E and Masson's trichrome stained microscopic images of Dox and Dox+EMPA treated heart (scale bar=100 μ m).

[Click here to view](#)

Supplementary Figure 4

The effect of Dox and β OHB on ROS generation using DCFDA assay in confocal microscopy (green: H₂DCFDA, scale bar=50 μ m).

[Click here to view](#)

Supplementary Figure 5

H&E and Masson's trichrome stained microscopic images of Dox and Dox+ β OHB treated heart (scale bar=100 μ m).

[Click here to view](#)

Supplementary Figure 6

Gross images of Dox and Dox+ β OHB treated heart.

[Click here to view](#)

REFERENCES

1. Berliner D, Bauersachs J. Current drug therapy in chronic heart failure: the new guidelines of the European Society of Cardiology (ESC). *Korean Circ J* 2017;47:543-54.

[PUBMED](#) | [CROSSREF](#)

2. Abdul-Ghani M, Del Prato S, Chilton R, DeFronzo RA. SGLT2 inhibitors and cardiovascular risk: lessons learned from the EMPA-REG OUTCOME study. *Diabetes Care* 2016;39:717-25.
[PUBMED](#) | [CROSSREF](#)
3. Mudaliar S, Polidori D, Zambrowicz B, Henry RR. Sodium-glucose cotransporter inhibitors: effects on renal and intestinal glucose transport: from bench to bedside. *Diabetes Care* 2015;38:2344-53.
[PUBMED](#) | [CROSSREF](#)
4. Ferrannini E, Baldi S, Frascerra S, et al. Shift to fatty substrate utilization in response to sodium-glucose cotransporter 2 inhibition in subjects without diabetes and patients with type 2 diabetes. *Diabetes* 2016;65:1190-5.
[PUBMED](#) | [CROSSREF](#)
5. Grabacka M, Pierzchalska M, Dean M, Reiss K. Regulation of ketone body metabolism and the role of PPAR α . *Int J Mol Sci* 2016;17:E2093.
[PUBMED](#) | [CROSSREF](#)
6. Vettor R, Inzucchi SE, Fioretto P. The cardiovascular benefits of empagliflozin: SGLT2-dependent and -independent effects. *Diabetologia* 2017;60:395-8.
[PUBMED](#) | [CROSSREF](#)
7. Kong G, Huang Z, Ji W, et al. The ketone metabolite β -hydroxybutyrate attenuates oxidative stress in spinal cord injury by suppression of class I histone deacetylases. *J Neurotrauma* 2017;34:2645-55.
[PUBMED](#) | [CROSSREF](#)
8. Napolitano A, Miller S, Murgatroyd PR, et al. Exploring glycosuria as a mechanism for weight and fat mass reduction. A pilot study with remogliflozin etabonate and sergliflozin etabonate in healthy obese subjects. *J Clin Transl Endocrinol* 2013;1:e3-8.
[PUBMED](#) | [CROSSREF](#)
9. Thapa S, Trivedi N, Omer A. Elevated serum beta-hydroxybutyrate levels (B-hb) in patients with type 2 diabetes mellitus using sodium-glucose cotransporter 2 (SGLT-2) inhibitor. Novel treatment for diabetes-focusing on GLP-1 and SGLT2 (posters). The 98th Annual Meeting of the Endocrine Society; 2016 Apr 1-4; Fri, USA. Boston (MA): Endocrine Society; 2016.
10. Breckenridge R. Heart failure and mouse models. *Dis Model Mech* 2010;3:138-43.
[PUBMED](#) | [CROSSREF](#)
11. Jin Z, Zhang J, Zhi H, et al. Beneficial effects of tadalafil on left ventricular dysfunction in doxorubicin-induced cardiomyopathy. *J Cardiol* 2013;62:110-6.
[PUBMED](#) | [CROSSREF](#)
12. Gao S, Ho D, Vatner DE, Vatner SF. Echocardiography in mice. *Curr Protoc Mouse Biol* 2011;1:71-83.
[PUBMED](#) | [CROSSREF](#)
13. Lee BS, Kim SH, Jin T, et al. Protective effect of survivin in doxorubicin-induced cell death in h9c2 cardiac myocytes. *Korean Circ J* 2013;43:400-7.
[PUBMED](#) | [CROSSREF](#)
14. Joshi DC, Bakowska JC. Determination of mitochondrial membrane potential and reactive oxygen species in live rat cortical neurons. *J Vis Exp* 2011;2704.
[PUBMED](#)
15. Mouli S, Nanayakkara G, AlAlasmari A, et al. The role of frataxin in doxorubicin-mediated cardiac hypertrophy. *Am J Physiol Heart Circ Physiol* 2015;309:H844-59.
[PUBMED](#)
16. Chen J, Williams S, Ho S, et al. Quantitative PCR tissue expression profiling of the human SGLT2 gene and related family members. *Diabetes Ther* 2010;1:57-92.
[PUBMED](#) | [CROSSREF](#)
17. Lopaschuk GD, Verma S. Empagliflozin's fuel hypothesis: not so soon. *Cell Metab* 2016;24:200-2.
[PUBMED](#) | [CROSSREF](#)
18. Rosenstock J, Ferrannini E. Euglycemic diabetic ketoacidosis: a predictable, detectable, and preventable safety concern with SGLT2 inhibitors. *Diabetes Care* 2015;38:1638-42.
[PUBMED](#) | [CROSSREF](#)
19. Guh JY, Chuang TD, Chen HC, et al. β -hydroxybutyrate-induced growth inhibition and collagen production in HK-2 cells are dependent on TGF- β and Smad3. *Kidney Int* 2003;64:2041-51.
[PUBMED](#) | [CROSSREF](#)
20. Octavia Y, Tocchetti CG, Gabrielson KL, Janssens S, Crijns HJ, Moens AL. Doxorubicin-induced cardiomyopathy: from molecular mechanisms to therapeutic strategies. *J Mol Cell Cardiol* 2012;52:1213-25.
[PUBMED](#) | [CROSSREF](#)
21. Mityr MA, Edwards JG. Doxorubicin induced heart failure: phenotype and molecular mechanisms. *Int J Cardiol Heart Vasc* 2016;10:17-24.
[PUBMED](#) | [CROSSREF](#)

22. Youm YH, Nguyen KY, Grant RW, et al. The ketone metabolite β -hydroxybutyrate blocks NLRP3 inflammasome-mediated inflammatory disease. *Nat Med* 2015;21:263-9.
[PUBMED](#) | [CROSSREF](#)
23. Liu X, Wang X, Zhang X, Xie Y, Chen R, Chen H. C57BL/6 mice are more appropriate than BALB/C mice in inducing dilated cardiomyopathy with short-term doxorubicin treatment. *Acta Cardiol Sin* 2012;28:236-40.
24. Zinman B, Wanner C, Lachin JM, et al. Empagliflozin, cardiovascular outcomes, and mortality in type 2 diabetes. *N Engl J Med* 2015;373:2117-28.
[PUBMED](#) | [CROSSREF](#)
25. Shimazu T, Hirschey MD, Newman J, et al. Suppression of oxidative stress by β -hydroxybutyrate, an endogenous histone deacetylase inhibitor. *Science* 2013;339:211-4.
[PUBMED](#) | [CROSSREF](#)
26. Sampson M, Lathen DR, Dallon BW, et al. β -Hydroxybutyrate improves β -cell mitochondrial function and survival. *J Insul Resist* 2017;2:8.
27. Lim S, Chesser AS, Grima JC, et al. D- β -hydroxybutyrate is protective in mouse models of Huntington's disease. *PLoS One* 2011;6:e24620.
[PUBMED](#) | [CROSSREF](#)
28. Aubert G, Martin OJ, Horton JL, et al. The failing heart relies on ketone bodies as a fuel. *Circulation* 2016;133:698-705.
[PUBMED](#) | [CROSSREF](#)
29. Yu Y, Yu Y, Zhang Y, Zhang Z, An W, Zhao X. Treatment with D- β -hydroxybutyrate protects heart from ischemia/reperfusion injury in mice. *Eur J Pharmacol* 2018;829:121-8.
[PUBMED](#) | [CROSSREF](#)