




## Correction to: KRAS status is related to histological phenotype in gastric cancer: results from a large multicentre study

Lindsay C. Hewitt<sup>1,2</sup> · Yuichi Saito<sup>1</sup> · Tan Wang<sup>3,4</sup> · Yoko Matsuda<sup>3</sup> · Jan Oosting<sup>5</sup> · Arnaldo N. S. Silva<sup>2</sup> · Hayley L. Slaney<sup>2</sup> · Veerle Melotte<sup>1,6</sup> · Gordon Hutchins<sup>2</sup> · Patrick Tan<sup>7</sup> · Takaki Yoshikawa<sup>8,9</sup> · Tomio Arai<sup>3</sup> · Heike I. Grabsch<sup>1,2</sup> 

Published online: 6 June 2019

© The International Gastric Cancer Association and The Japanese Gastric Cancer Association 2019

### Correction to: Gastric Cancer

<https://doi.org/10.1007/s10120-019-00972-6>

In the original publication of this article, Fig. 2 was published incorrectly. The correct Fig. 2 is given in this correction.

---

The original article can be found online at <https://doi.org/10.1007/s10120-019-00972-6>.

---

✉ Heike I. Grabsch  
H.Grabsch@maastrichtuniversity.nl

<sup>1</sup> Department of Pathology, GROW School for Oncology and Developmental Biology, Maastricht University Medical Center+, P. Debyelaan 25, 6229 HX Maastricht, The Netherlands

<sup>2</sup> Division of Pathology and Data Analytics, Leeds Institute of Medical Research at St. James's, University of Leeds, Leeds, UK

<sup>3</sup> Department of Pathology, Tokyo Metropolitan Geriatric Hospital and Institute of Gerontology, Tokyo, Japan

<sup>4</sup> Department of Comprehensive Pathology, Tokyo Medical and Dental University, Tokyo, Japan

<sup>5</sup> Department of Pathology, Leiden University Medical Center, Leiden, The Netherlands

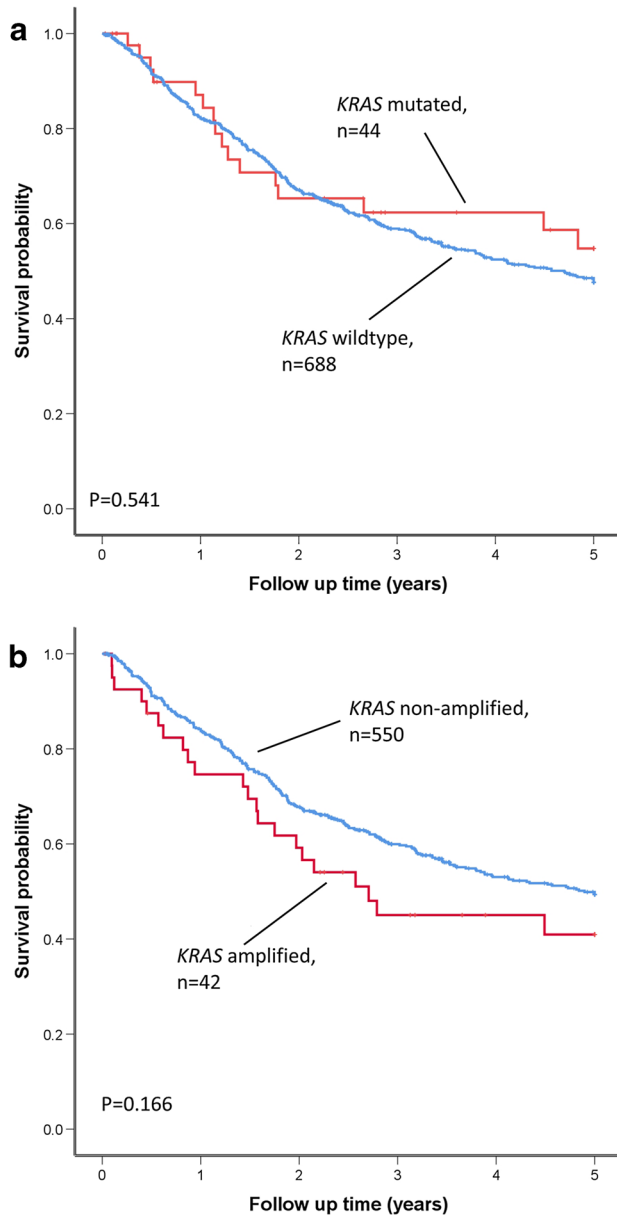
<sup>6</sup> Department of Clinical Genetics, Erasmus University Medical Center, University of Rotterdam, Rotterdam, The Netherlands

<sup>7</sup> Duke-NUS Medical School, Singapore, Singapore

<sup>8</sup> Department of Gastric Surgery, National Cancer Center Hospital, Tokyo, Japan

<sup>9</sup> Department of Gastrointestinal Surgery, Kanagawa Cancer Center Hospital, Yokohama, Japan

**Publisher's Note** Springer Nature remains neutral with regard to jurisdictional claims in published maps and institutional affiliations.



**Fig. 2** Kaplan–Meier plots showing probability of overall survival in GC patients stratified by *KRAS* gene activation status. **a** Kaplan–Meier survival analysis showed no difference in survival when patients were stratified by *KRAS* mutation status. **b** Kaplan–Meier survival analysis showed no difference in survival when patients were stratified by *KRAS* amplification status