



Statistical Methods for Adjusting Estimates of Treatment Effectiveness for Patient Nonadherence in the Context of Time-to-Event Outcomes and Health Technology Assessment: A Systematic Review of Methodological Papers

Abualbishr Alshreef , Nicholas Latimer, Paul Tappenden, Ruth Wong, Dyfrig Hughes , James Fotheringham, and Simon Dixon

Introduction. Medication nonadherence can have a significant negative impact on treatment effectiveness. Standard intention-to-treat analyses conducted alongside clinical trials do not make adjustments for nonadherence. Several methods have been developed that attempt to estimate what treatment effectiveness would have been in the absence of nonadherence. However, health technology assessment (HTA) needs to consider effectiveness under real-world conditions, where nonadherence levels typically differ from those observed in trials. With this analytical requirement in mind, we conducted a review to identify methods for adjusting estimates of treatment effectiveness in the presence of patient nonadherence to assess their suitability for use in HTA. **Methods.** A “Comprehensive Pearl Growing” technique, with citation searching and reference checking, was applied across 7 electronic databases to identify methodological papers for adjusting time-to-event outcomes for nonadherence using individual patient data. A narrative synthesis of identified methods was conducted. Methods were assessed in terms of their ability to reestimate effectiveness based on alternative, suboptimal adherence levels. **Results.** Twenty relevant methodological papers covering 12 methods and 8 extensions to those methods were identified. Methods are broadly classified into 4 groups: 1) simple methods, 2) principal stratification methods, 3) generalized methods (g-methods), and 4) pharmacometrics-based methods using pharmacokinetics and pharmacodynamics (PKPD) analysis. Each method makes specific assumptions and has associated limitations. Five of the 12 methods are capable of adjusting for real-world nonadherence, with only g-methods and PKPD considered appropriate for HTA. **Conclusion.** A range of statistical methods is available for adjusting estimates of treatment effectiveness for nonadherence, but most are not suitable for use in HTA. G-methods and PKPD appear to be more appropriate to estimate effectiveness in the presence of real-world adherence.

Keywords

causal inference, cost-effectiveness analysis, medication nonadherence, noncompliance, survival analysis

Date received: May 10, 2019; accepted: September 17, 2019

Patient nonadherence to medications can have a significant negative impact on treatment effectiveness and health care costs and has the potential to alter the conclusions of economic evaluations and health technology

Corresponding Author

Abualbishr Alshreef, Health Economics and Decision Science, School of Health and Related Research, University of Sheffield, Regent Court, 30 Regent Street, Sheffield, S1 4DA, UK
(a.o.alshreef@sheffield.ac.uk).

assessments (HTAs).¹⁻³ An economic evaluation typically assesses the cost-effectiveness of a new treatment compared to standard treatment using evidence on clinical effectiveness and costs. Intention-to-treat (ITT) analysis, which compares randomized groups regardless of nonadherence or withdrawal, is a well-established method for estimating treatment effectiveness from randomized controlled trials (RCTs).⁴ However, ITT estimates may not be relevant if the HTA aims to assess the effectiveness of treatment given real-world adherence patterns.^{5,6}

There is evidence to show that adherence in the real world is likely to differ from RCTs (depending on the type of treatment, disease area, and health care setting), which leads to uncertainty around the actual effectiveness of treatments.⁷⁻⁹ Clinical effectiveness estimates have a direct impact on cost-effectiveness; consequently, a cost-effectiveness analysis (CEA) that does not incorporate nonadherence may produce misleading conclusions regarding the value of the technology. In the HTA context, we are interested in effectiveness estimates inferred to the entire study population (as defined by scope and study eligibility criteria), which can be identified at baseline, as opposed to estimates focused on a latent subgroup of the population (e.g., compliers). Moreover, HTA agencies are interested in adjustment methods, which can be used for reestimating treatment effectiveness for any given level of adherence, to reflect potential real-world adherence levels.^{10,11}

The fundamental issue in estimating effectiveness associated with alternative adherence levels is the methodological challenge associated with adjusting for time-dependent confounding. In this context, time-dependent confounders are prognostic factors that predict subsequent nonadherence and outcomes, yet are themselves predicted by previous nonadherence.¹² When time-dependent confounders

are present, more complex methods than simple regression adjustment are needed because simple regression adjustment is unable to deal with variables that predict adherence and are also an intermediate step between adherence and outcome. A range of methods has been proposed for estimating the causal effect of treatments in the presence of nonadherence, but little guidance exists about their relative advantages,¹³⁻¹⁵ and not all deal with time-dependent confounding appropriately. In addition, these methods have been designed, principally, to reestimate effectiveness assuming perfect adherence, whereas HTA requires reestimation for suboptimal (real-world) adherence.

The aims of the review are to systematically identify approaches for adjusting for nonadherence in the context of time-to-event outcomes using individual patient data in RCTs, to describe how each is undertaken, and to assess their suitability for reestimating effectiveness based on alternative, suboptimal adherence levels.

Methods

Review Question and Protocol

The review question was as follows: “What methods have been proposed in the methodological literature to account for the impact of nonadherence to treatments on clinical effectiveness and cost-effectiveness?” The review approach adheres to published international guidelines for undertaking and reporting systematic reviews, and methods were prespecified in a protocol.¹⁶⁻²⁰

Search Strategy

A “Comprehensive Pearl Growing” (CPG) technique¹⁷ and 2-stage iterative search approach was used across 7 databases (MEDLINE, Embase, Cochrane Library, EconLit, Scopus, Web of Science, MathSciNet). Databases were searched for potentially relevant papers published in English from inception to February 9, 2018 (first stage search), to May 23, 2018 (second stage search). The database searches were complemented by citation searches and reference list checking for each “pearl” (key paper) to identify additional relevant papers. The search approach was designed to identify the initial paper proposing the method (or articles reporting extensions to a previously developed method), rather than articles reporting the application of methods in studies.

The database search strategy comprises keywords for patient adherence combined with methods terms and focused MeSH headings of known pearls. The second stage search was informed from the collective analysis of newly identified pearls title, abstract, keywords, and

Health Economics and Decision Science, School of Health and Related Research (ScHARR), University of Sheffield, Sheffield, South Yorkshire, UK (AA, NL, PT, RW, SD); Sheffield Kidney Institute, Sheffield Teaching Hospitals NHS Trust, Sheffield, South Yorkshire, UK (JF); Centre for Health Economics & Medicines Evaluation (CHEME), Bangor University, Bangor, Gwynedd, UK (DH). The author(s) declared the following potential conflicts of interest with respect to the research, authorship, and/or publication of this article: NL is supported by Yorkshire Cancer Research (Award reference number S406NL). AA, PT, RW, DH, JF, and SD declare that they have no conflict of interest. The author(s) disclosed receipt of the following financial support for the research, authorship, and/or publication of this article: This report is independent research funded by a National Institute for Health Research (NIHR) Doctoral Research Fellowship awarded to Abualbisher Alshreef (DRF-2017-10-025). The views expressed in this report are those of the authors and not necessarily those of the National Health Service, the NIHR, the Department of Health and Social Care, or the Yorkshire Cancer Research.

MeSH and floating headings using the online Yale MeSH Analyzer Tool.^{13,21–28} Search terms and strategies are provided in online Supplementary Appendix A.

Inclusion and Exclusion Criteria

The selection of papers included for narrative synthesis was conducted in 2 stages: 1) records retrieved from all sources were screened by titles followed by abstracts screening, and 2) potentially relevant full-text articles were assessed for eligibility using the inclusion and exclusion criteria (Suppl. Table S1 in Appendix B). One author (AA) screened all potentially relevant papers retrieved. A second author (SD) independently screened a subset of papers against the eligibility criteria. Disagreements between the 2 reviewers were resolved by discussion, and a consensus was reached on the final list of included papers. Expert opinion was obtained from 2 experts (DH, IW) for recommendation of additional papers.

Data Extraction

A data extraction form was developed to extract the basic information and key characteristics for each method identified (Suppl. Table S2 in Appendix B).

Data Synthesis

A narrative data synthesis approach was followed for each relevant method identified and its extensions. This included a description of the key characteristics of each method, as specified by the appraisal framework (Suppl. Table S3 in Appendix B).²⁹ As part of this, we assessed which forms of nonadherence the method is capable of addressing, using the classification developed by Vrijens and colleagues.²⁸ This classification differentiates between 3 stages of medication nonadherence: 1) initiation (when the first dose is taken by the patient), 2) implementation (how closely the actual dosage of a patient corresponds to the prescribed dosing regimen), and 3) persistence (time to discontinuation or end of therapy).²⁸

We provide a brief description of the concept of each adjustment method, together with the causal model, its estimand (defined in the next section), key assumptions, and limitations. We assess whether the method is capable of reestimating effectiveness for other suboptimal levels of adherence (as opposed to optimal adherence). This assessment was based on the capability of the method to estimate the treatment effect under alternative counterfactual adherence levels (i.e., not observed adherence levels) given the adherence level and treatment effect

actually observed in the trial. Finally, we assess the appropriateness of nonadherence adjustment methods for the HTA context based on criteria developed by the authors. The criteria were 1) the suitability of the estimand (as described in the next section), 2) the types of nonadherence the method is capable of dealing with, and 3) whether it is possible to use the method to account for real-world nonadherence levels.

Possible Estimands and Suitability for HTA

An estimand is the parameter of interest estimated by the statistical method that we can use to make inferences about a population using a sample from that population.^{5,30} A range of possible estimands was identified, but only a few are appropriate for HTA. In the HTA context, resource allocation decisions are usually made for a specified population defined by the scope for each decision problem. Hence, the estimands of interest are those covering the entire study population (as specified by the RCT eligibility criteria), and this should be identifiable at baseline for resource allocation decision making. Therefore, estimands focused on latent subgroups of patients (e.g., compliers) may not be appropriate for the HTA context.

Results

Overview of Included Papers

This review includes 20 papers describing 12 methods and 8 extensions to those methods.^{22,31–49} In total, the searches resulted in 4472 records (Figure 1). The included papers were published between 1992 and 2018 (inclusive); the majority were published in the *Statistics in Medicine* journal (30%) and *Biometrics* journal (25%). Other characteristics of included papers are given in Supplementary Table S4 in Appendix B.

Taxonomy of Methods

A taxonomy of methods for adjusting estimates of treatment effectiveness for nonadherence in the context of time-to-event outcomes is proposed (Table 1). The purpose of the taxonomy is to increase understanding of the concept behind each method and its relation to other methods in terms of estimands and estimators.³⁰ The structure of the taxonomy was initially developed by 1 author (AA) and further revised based on consultations with other authors (NL, PT, DH, JF, SD) and an expert in causal inference methods (IW).

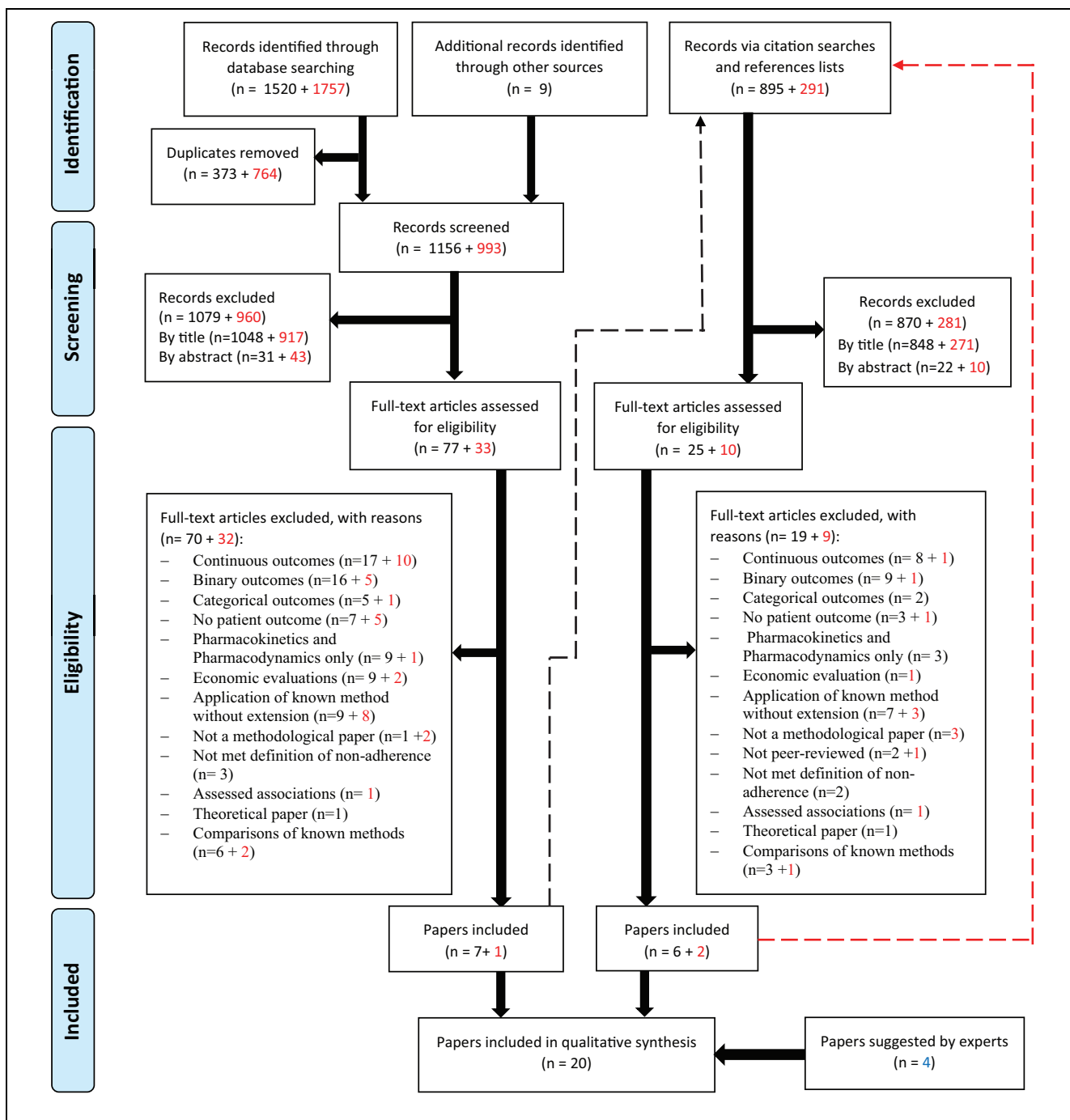


Figure 1 PRISMA Flow Diagram. PRISMA, preferred reporting items for systematic reviews and meta-analyses. Numbers in red represent records from the 2nd stage of searches. The dashed lines show that citation searches and references lists checking were done for pearls identified from databases searching. Papers excluded for the reason of “comparison of known methods” are included in the citation searches and references lists checking as these were considered relevant for this purpose.

Table 1 Taxonomy of Methods for Adjusting Treatment Effectiveness for Nonadherence in the Context of Time-to-Event Outcomes

Methods Group	Method Subcategory	Method/Extension	Reference	
Simple methods	ITT ^a	Intention-to-treat (ITT) analysis	Yu et al., 2015 ⁴⁶	
	PP	Per-protocol (PP) analysis	Wu et al., 2015 ⁴⁵	
Principal stratification methods	AT	As-treated (AT) analysis	Korhonen et al., 1999 ³⁴	
	CPH with PLE	Cox proportional hazards (CPH) model with partial likelihood estimator (PLE)	Cuzick et al., 2007 ⁴¹	
	MCC	Markov compliance class (MCC) model in a 3-stage method (3SM)	Lin et al., 2007 ⁴²	
	Wtd PP	Weighted per-protocol (Wtd PP) analysis using a proportional hazards model with an expectation-maximization (EM) estimator	Li and Gray, 2016 ⁴⁷	
	C-PROPHET	Compliers PROPortional Hazards Effect of Treatment (C-PROPHET)	Loeys and Goetghebeur, 2003 ³⁹	
	IV	Instrumental variable (IV) with likelihood estimator	Baker, 1998 ³²	
G-methods	MSMs	IV extension: IV with plug-in nonparametric empirical maximum likelihood estimation (PNEMLE)	Nie et al., 2011 ⁴³	
		IV extension: transformation promotion time cure model with maximum likelihood estimation to estimate the complier average causal effect (CACE) and the complier effect on survival probability (CESP)	Gao and Zheng, 2017 ⁴⁸	
	SNFTMs	MSMs	Marginal structural models (MSMs) with inverse probability of censoring weighting (IPCW)	Robins and Finkelstein, 2000 ²²
		MSM extension: MSMs with inverse probability of treatment weighting (IPTW)	Hernan et al., 2001 ³⁵	
	RPSFTMs	SNFTMs	Structural nested failure time models (SNFTMs) with G-estimation	Robins et al., 1992 ³¹
		RPSFTMs	Rank-preserving structural failure time models (RPSFTMs) with G-estimation	Loeys et al., 2001 ³⁶
		RPSFTM extension: incorporating covariates to improve the precision of estimators	Korhonen and Palmgren, 2002 ³⁷	
		RPSFTM extension: improving the efficiency of the estimators	Loeys and Goetghebeur, 2002 ³⁸	
		RPSFTM extension: allowing for dependent censoring	Matsui, 2004 ⁴⁰	
		RPSFTM extension: choice of model and impact of recensoring	White and Goetghebeur, 1998 ³³	
Pharmacometrics-based methods	PKPD	Pharmacokinetics and pharmacodynamics (PKPD)-based method	Pink et al., 2014 ⁴⁴	
		PKPD extension: modeling varying implementation and persistence types of nonadherence	Hill-McManus et al., 2018 ⁴⁹	

^aITT does not adjust for nonadherence but is included in the taxonomy as a “do nothing” approach (i.e., ignoring nonadherence).

In the proposed taxonomy, methods are broadly classed into 4 groups: 1) simple methods that do not appropriately adjust for nonadherence; 2) principal stratification methods for estimating the complier average causal effect (CACE) estimand⁵⁰; 3) generalized methods (g-methods), which are based on the counterfactual outcome framework originally developed by Neyman⁵¹ and

Rubin⁵² for estimating the effect of time-fixed treatments, as well as further extended by Robins et al.^{53,54} for time-varying treatments; and 4) pharmacometric-based methods as a unique approach using pharmacokinetics and pharmacodynamics (PKPD) analysis commonly used in clinical trials for evaluating newly developed pharmacological interventions. The estimand

and key assumptions used by each method are provided in Table 2, and the appropriateness for HTA is provided in Table 3. We provide an overview of methods in each group in the following subsections. We do not further describe the ITT analysis, since it does not attempt to adjust for nonadherence.

Simple Methods

Per-protocol analysis. The standard per-protocol (PP) analysis strategy attempts to estimate the treatment effect among adherent patients by excluding protocol noncompliers.⁴⁵ PP can deal with random (nonselective) types of nonadherence (initiation, implementation, persistence). The main concern is that excluding some patients from the analysis may undermine the prognostic balance generated by the randomization, which may introduce selection bias. This is likely to be the case if nonadherence is not random (i.e., if nonadherence is influenced by other patient characteristics and prognostic factors).⁵⁵ Even if prognostic factors that are associated with nonadherence are correctly identified, PP analysis will introduce bias in the presence of time-dependent confounding.

As-treated analysis. The as-treated (AT) method attempts to adjust for the random initiation type of nonadherence. AT estimates the average causal effect (ACE) among patients who actually received the treatment compared to those who did not receive the treatment, assuming they are similar regardless of randomization.³⁴ The main problem with this approach is that the group who actually received the treatment is unlikely to be comparable to the group who did not, making this approach prone to selection bias.⁵⁶ AT analysis is less commonly used in practice compared with ITT and PP conventional methods.

Principal Stratification Methods

Cox proportional hazards model with partial likelihood estimator. The Cox proportional hazards (CPH) model with partial likelihood estimator (PLE) is a method for estimating the treatment effect adjusted for initiation nonadherence at baseline while respecting the randomization.⁴¹ This is a semiparametric model whereby the treatment effect on the distributions of failure times is the parametric part. In the basic model, an individual with covariates (k , z_0 , z) will have a hazard function presented in equation (1).

$$\exp(\gamma_T z_0 + \beta z + \gamma_k) \lambda(t), \quad (1)$$

where γ_T is the treatment effect in compliers (CACE estimand) expressed in terms of the hazard at time t for a cumulative hazard function $\Lambda_k(t)$ (this is only observable for the compliers class), γ_k is the adherence class of the k th individual, z_0 is a vector of baseline covariates, and z is a set of time-dependent covariates. The standard method assumes that covariates are independent of nonadherence. The method can be used to adjust for nonadherence in situations where nonadherence is dependent on baseline covariates, but this approach requires a more complex estimator.⁴¹ The key limitation of this method is the difficulty of modeling time-varying treatments and other types of nonadherence beyond initiation.

Markov compliance class model in a 3-stage method. The Markov compliance class (MCC) model can accommodate both initiation and time-varying nonadherence (implementation) in the context of longitudinal studies where patients are randomized at baseline and randomization is maintained over time.⁴² The concept of this method is based on specifying 2 possible adherence classes that are applied at specified time points; for example, 5 time points results in a total of 32 (2^5) adherence patterns. A stratification strategy can then be used to stratify adherence patterns into superclasses (low compliers, decreasing compliers, and high compliers). This can be used to estimate the CACE estimand among the compliers superclass. Model (2) can then be used to account for the relationship between adherence and survival time at time t .

$$h(t|U_i = k) = h_0(t) \exp(\beta_k I(U_i = k)), \quad (2)$$

where β_k for one of the adherence superclasses is assumed 0 for identification (reference superclass) and U_i is individual i 's adherence superclass for a k number of superclasses.⁴² As a limitation, the method cannot deal with time-dependent confounding.

Weighted per-protocol analysis with expectation-maximization estimator. The weighted per-protocol (Wtd PP) method estimates the CACE by focusing on the ambivalent (compliers) class. The method attempts to deal with treatment initiation over time with 2 main features: 1) proposing a Wtd PP estimator by using time-varying weights that are subject specific (depend on baseline and time-dependent covariates) in a survival model and 2) proposing an expectation-maximization algorithm to maximize the full likelihood (FL) and PLEs.⁴⁷ The method was developed to adjust for

Table 2 Estimands, Causal Interpretation of Estimates, and Key Assumptions for Nonadherence Adjustment Methods

Method	Estimand ^a	Estimand Attributes	Causal Interpretation of the Estimate	Key Assumptions
ITT	The effect of treatment assignment (not the effect of treatment itself)	Entire study population; ignoring events such as nonadherence and dropout	The average causal effect of treatment assignment on the survival outcome in a particular study (regardless of adherence, dropout, etc.)	The randomization assumption (i.e., group membership is randomly assigned), which implies that groups are comparable or exchangeable
PP	The effect of following the study protocol	Subpopulation of the protocol compliers in the study; excluding protocol noncompliers from the analysis set	The average causal effect of treatment on the survival outcome in individuals who adhered to the protocol in terms of eligibility, adherence, outcome assessment, etc.	The groups of patients who adhered to the protocol in each arm are comparable after covariate adjustment.
AT	The effect of treatment actually received	Subpopulation of patients who initiated treatment, with patients who switched treatment analyzed with the group they switched to regardless of randomization	The average causal effect of treatment on the survival outcome among individuals who actually received the treatment in the experimental group (including control group patients who switched onto the experimental treatment) compared to those who actually received the standard treatment (or those who actually did not receive the treatment in placebo-controlled trials) regardless of treatment assignment	The group of patients who received the treatment is comparable to those who did not, regardless of their treatment assignment.
CPH with PLE	CACE	Subpopulation who adhered to the protocol, excluding patients who did not adhere to the protocol in each arm of the study	The average treatment effect on the survival outcome in the complier subpopulation (patients who adhered to the protocol)	Covariates included in the model are independent of adherence.
MCC	CACE	As above	As above	The Markov assumption Time-varying adherence depends on the history of adherence
Wtd PP	CACE	As above	As above	Latent and ignorable missing data mechanism Patient population consists of 3 (possibly latent) subgroups: “ambivalent,” “insisters,” and “refusers”
C-PROPHET	CACE	As above	As above	The exclusion restriction assumption
IV	CACE	As above	As above	The exclusion restriction assumption Randomization has no effect on the probability of adherence to treatment
				Monotonicity assumption

(continued)

Table 2 (continued)

Method	Estimand ^a	Estimand Attributes	Causal Interpretation of the Estimate	Key Assumptions
MSMs with IPCW/IPTW	The effect of treatment had everyone remained adherent to the protocol	Entire study population; had everybody adhered to the protocol with perfect adherence to the prescribed dosing regimen or had everybody adhered to the protocol at an alternative level of adherence to the prescribed dosing regimen than what was observed in the trial (e.g., real-world adherence level)	The average causal effect of treatment that would have been observed if everybody adhered to the protocol. MSMs estimate the average treatment effect in the entire population, but the causal effect in a subset of the population (defined by a combination of variables L) can also be estimated. The IPCW estimand can also be interpreted as a comparison of the potential (counterfactual) outcomes under different levels of adherence in the same group of subjects.	No unmeasured confounders Positivity assumption
SNFTMs with G-estimation	The effect of treatment had everyone remained adherent to the protocol	As above	The average treatment effect that would have been observed if everybody adhered to the protocol (or remained at a particular adherence level such as real-world adherence level). SNFTMs can be used to estimate the average causal effect in a subset of the population defined by a combination of factors (L), e.g., men, patients aged >60 years	No unmeasured confounders Survival times and treatment-free survival times are proportional by an unknown factor that depends on the exposure.
RPSFTMs with G-estimation	The effect of treatment had everyone remained adherent to the protocol	As above	The average treatment effect that would have been observed if everybody adhered to the protocol compared to none treated.	The randomization assumption The common treatment effect assumption Survival times and treatment-free survival times are proportional by an unknown factor that depends on the exposure.
PKPD method	The effect of following a particular adherence pattern in the study population	Entire study population; given a particular pattern of adherence to the prescribed dosing regimen	The average causal effect of treatment if individuals followed a particular adherence pattern	The exclusion restriction assumption Correctly specified model

AT, as treated; CACE, complier average causal effect; CPH, Cox proportional hazards; C-PROPHET, Complier PROportional Hazards Effect of Treatment; IPCW, inverse probability of censoring weighting; IPTW, inverse probability of treatment weighting; ITT, intention to treat; IV, instrumental variable; MCC, Markov compliance class; MSMs, marginal structural models; PKPD, pharmacokinetics and pharmacodynamics; PLE, partial likelihood estimator; PP, per protocol; RPSFTMs, rank-preserving structural failure time models; SNFTMs, structural nested failure time models; Wtd PP, weighted per protocol.

^aThe estimand is the parameter of interest defined using 4 attributes: 1) the population, 2) the outcome variable or endpoint, 3) the specification of how to deal with intercurrent events (e.g., include compliers only), and 4) the population-level summary of the outcome variable. The description of the estimand in this table is focused on 2 attributes (the population and specification of how to deal with intercurrent events), as the other 2 attributes (the outcome variable and the population-level summary of the outcome variable) are expected to be similar in the context of time-to-event outcomes.

Table 3 Appropriateness of Estimand for the HTA Context, Types of Nonadherence, Possibility to Account for Real-World Adherence Levels, and Suitability of the Effectiveness Estimates for HTA Using the Alternative Adjustment Methods

Method	Type of Nonadherence That Can Be Adjusted for Using the Method				Possibility to Account for Real-World Nonadherence Levels ^c	Suitability of the Method for Use in HTA	Notes
	Appropriateness of Estimand for the HTA Context ^a	Initiation, Implementation, Persistence	Random, Explainable Nonrandom, No-Random ^b	None			
ITT	Yes	None	None	None	No	No	The estimand is marginalized to the entire population. Cannot estimate counterfactual estimands (i.e., treatment effectiveness given adherence levels in the real world).
PP	No	Initiation, implementation, persistence	Random	Random	No	No	The estimand is not marginalized to the entire population. Excluding the protocol noncompliers may break the randomization balance, leading to selection bias if protocol noncompliance is related to underlying prognosis.
AT	No	Initiation	Random	Random	No	No	Does not respect the randomization balance, which may lead to selection bias. Cannot estimate counterfactual estimands.
CPH with PLE	No	Initiation	Random, explainable nonrandom	Random, explainable nonrandom	No	No	The CACE estimand used by all 5 methods is not marginalized to the entire population.
MCC	No	Initiation, implementation	Random	Random	No	No	The compliers class is a latent group of patients that is not identifiable at baseline, making it difficult for policymakers to make resource allocation decisions based on CACE estimand.
Wtd PP	No	Initiation	Explainable nonrandom	Explainable nonrandom	No	No	IV can estimate effectiveness given real-world adherence level based on the counterfactual outcome framework.
C-PROPHET	No	Initiation	Nonrandom	Nonrandom	No	No	
IV	No	Initiation, implementation, persistence	Nonrandom	Nonrandom	Yes	No	

(continued)

Table 3 (continued)

Method	Type of Nonadherence That Can Be Adjusted for Using the Method			Possibility to Account for Real-World Nonadherence Levels ^c	Suitability of the Method for Use in HTA	Notes
	Appropriateness of Estimand for the HTA Context ^a	Initiation, Implementation, Persistence	Random, Explainable Nonrandom, No-Random ^b			
MSMs	Yes	Initiation, implementation, persistence	Explainable nonrandom	Yes	Yes	Effectiveness estimates are marginalized to entire study population. Can be used to account for real-world adherence levels.
SNFTMs	Yes	Initiation, implementation, persistence	Explainable nonrandom	Yes	Yes	RPSFTM only estimates the “all treated” v. “nontreated” estimand, making it applicable to adjust for “initiation” type of adherence only.
RPSFTMs	Yes	Initiation	Nonrandom	Yes	Yes	The estimand is marginalized to the entire population.
PKPD	Yes	Initiation, implementation, persistence	Explainable nonrandom	Yes	Yes	Can estimate effectiveness given different adherence patterns.

AT, as treated; CACE, complier average causal effect; CPH, Cox proportional hazards; C-PROPHET, Complier PROPortional Hazards Effect of Treatment; HTA, health technology assessment; IPCW, inverse probability of censoring weighting; IPTW, inverse probability of treatment weighting; ITT, intention to treat; IV, instrumental variable; MCC, Markov compliance class; MSMs, marginal structural models; PKPD, pharmacokinetics and pharmacodynamics; PLE, partial likelihood estimator; PP, per protocol; RPSFTMs, rank-preserving structural failure time models; SNFTMs, structural nested failure time models; Wtd PP, weighted per protocol.

^aIn the HTA context, the estimand of interest includes the entire study population, and this should be identifiable at baseline for resource allocation decision making.

^bThis column specifies the type of nonadherence that each adjustment method is capable of dealing with in terms of random (nonselective) nonadherence, explainable nonrandom (selective) nonadherence (i.e., nonadherence explainable by observed covariates), or no-random (selective) nonadherence.

^cIn the HTA context, methods for adjusting trial data for nonadherence need to be capable of reestimating treatment effectiveness for any given level of adherence (e.g., real-world adherence levels).

time-dependent confounders, which are associated with nonadherence. The partial likelihood estimator used by this model is similar to that used in the CPH with PLE approach (model (1)). Details of the FL estimator are reported in Li and Gray.⁴⁷

Compliers PROPortional Hazards Effect of Treatment. The Compliers PROPortional Hazards Effect of Treatment (C-PROPHET) identifies adherent patients (initiation at baseline) and estimates the treatment effect in this group, adjusting for baseline covariates.³⁹ C-PROPHET is a semi-parametric model with the parametric side being the effect of the exposure on the survival times distribution.³⁹ If individual patients who actually adhered to the protocol can be predicted at baseline in the intervention and control arms of an RCT, then one could fit a PH model for this study subpopulation to estimate the treatment effect.

The C-PROPHET model assumes that the hazard of survival time (T_i) is as provided in equation (3).³⁹

$$\lambda(t|Z_i = 1, E_{1i} = 1) = \lambda(t|Z_i = 0, E_{1i} = 1)\exp(\psi_0), \quad (3)$$

where Z_i is the randomization variable for individual i ($Z_i = 1$ for the intervention group, $Z_i = 0$ for the control group) and E_{1i} represents the principal stratum at the treatment initiation stage. The parameter ψ_0 denotes the causal proportional hazards effect in the subpopulation of compliers. This is the parameter of interest that is called C-PROPHET.³⁹ In terms of limitations, the method cannot be used to adjust for time-dependent nonadherence.

Instrumental variable method. The instrumental variable (IV) method can be used for adjusting for all types of nonadherence using a binary adherence variable. The method relies on the exclusion restriction assumption; that is, the IV affects the survival outcome only through its effects on the exposure. Three variants of the IV approach were identified: 1) IV with likelihood estimator,³² 2) IV with plug-in nonparametric empirical maximum likelihood estimator (PNEMLE),⁴³ and 3) transformation promotion time cure model with maximum likelihood estimator (MLE).⁴⁸

The IV with likelihood estimator works by classifying individuals in the trial population into 4 groups (similar to the classification used by MCC method). The estimator should be used to calculate the probability of having the case-specific event of interest at time t for each latent adherence class. Treatment effect in terms of hazard ratio (HR) can then be computed. This method was further

applied to estimate adherence-adjusted cost-effectiveness using RCT data.³²

The PNEMLE approach assumes the following survival functions for compliers in the intervention group (equation (4)), denoted as $S_{c1}(V)$, and control group (equation (5)), denoted as $S_{c0}(V)$, while never-takers have similar survival function in both groups, denoted as $S_{nt}(V)$.

$$S_{T|R=1}(V) = \pi_c S_{c1}(V) + (1 - \pi_c) S_{nt}(V), \quad (4)$$

$$S_{T|R=0}(V) = \pi_c S_{c0}(V) + (1 - \pi_c) S_{nt}(V), \quad (5)$$

where π_c is the fraction of compliers in the intervention group.

The IV extension using transformation promotion time cure model is a semiparametric model for estimating CACE and complier effect on survival probability (CESP) estimands. Further details of this extension are reported in Gao and Zheng.⁴⁸ By using an IV approach, the analyst can deal with time-dependent confounding. The main drawback of this method is finding an instrumental variable that meets all the criteria of a valid IV¹⁵; an inadequate IV can lead to an imprecise and/or biased estimate.

G-Methods

Marginal structural models with inverse probability of censoring weighting/inverse probability of treatment weighting. This method can be used to adjust for all types of nonadherence by censoring individuals at the first time they become nonadherent and then use inverse probability of censoring weighting (IPCW) for estimating the ACE of treatment using marginal structural models (MSMs).²² The IPCW can be used to obtain a valid treatment effect by adjusting for baseline and time-dependent confounders. IPCW makes the “no unmeasured confounding” assumption, that is, the assumption of explainable nonrandom nonadherence by measured time-dependent confounders.^{13,22} Stabilized weights are used because unstabilized weights can be inefficient. In practice, the analyst should construct stabilized weights (\hat{w}_{it}^{stab}) for each individual i in time interval t by multiplying all the probabilities of remaining uncensored (adherent) up to time t using equation (6).

$$\hat{w}_{it}^{stab} = \prod_{k=0}^t \frac{1}{1 - \hat{p}_{ik}} / \prod_{k=0}^t \frac{1}{1 - \hat{p}_{0ik}} = \prod_{k=0}^t \frac{1 - \hat{p}_{0ik}}{1 - \hat{p}_{ik}}, \quad (6)$$

where \hat{p}_{ik} is the predicted probability of nonadherence in time interval k given the randomization group and adjusting for baseline and time-dependent covariates, and \hat{p}_{0ik} is the probability of nonadherence given the randomization group and adjusting for baseline covariates only. A pseudo-population should be created using the IPCW, and then any survival analysis (e.g., a Cox partial likelihood estimator) can be applied for estimating adherence-adjusted effectiveness. The main limitation of IPCW is the assumption of no unmeasured confounders, which cannot be proven empirically.

As an alternative approach to IPCW, one could allow individuals to become adherent again following a period of nonadherence—this can be modeled using the inverse probability of treatment weighting (IPTW) approach.³⁵ The key feature of this method is that it allows for modeling longitudinal adherence patterns where patients follow erratic adherence behaviors in implementing the prescribed dosing regimen (i.e., on/off adherence patterns).

Structural nested failure time models with G-estimation. The structural nested failure time models (SNFTMs) can be applied to adjust for all types of nonadherence by controlling for time-dependent confounding using the G-estimation technique.³¹ The model relates the individual's observed survival time and treatment history to the counterfactual outcome. In the SNFTM framework, the no unmeasured confounding assumption implies that the potential outcome does not add to the prediction model for treatment initiation, conditional on other covariates included in the model. To formally explain the G-estimation procedure, let us assume the treatment effect model in equation (7).⁵⁷ We fit a logistic regression model to obtain the coefficients in equation (8).

$$Y^t \sim X_{\psi}(t) \text{ given } (\bar{A}_t, \bar{L}_t), \quad (7)$$

$$P[A(t)] = \beta_0(t) + \beta_1 A(t-1) + \beta_2 L(t) + \beta_3 X_{\psi}, \quad (8)$$

where Y^t is the observed survival time, \sim means has the same distribution as, $X_{\psi}(t)$ is the counterfactual outcome, \bar{A}_t is the past treatment, \bar{L}_t is the history of covariates, and $P[A(t)]$ is the probability of initiating the treatment at time t .

G-estimation is used to search for ψ value, which adds the least to the prediction model (i.e., treatment initiation is independent of counterfactual outcomes). This means we search for a value of $\hat{\psi}$ that results in a X_{ψ} term having a coefficient $\beta_3 = 0$ in model (8). That value of ψ provides the best estimates of counterfactual survival times adjusted for nonadherence. The main limitation of

SNFTMs is the potential biases related to the no unmeasured confounding assumption, which cannot be formally tested.

Rank-preserving structural failure time models with G-estimation. The rank-preserving structural failure time model (RPSFTM) is a semiparametric model for adjusting for initiation nonadherence using the randomization factor, observed survival time, and treatment history.³⁶ The method relies on the “common treatment effect” assumption (equal treatment effect regardless of when the treatment was initiated but relative to the time for which the treatment was received). It also relies upon the randomization of the trial, meaning that counterfactual survival times are equal between groups.

A simple RPSFTM (equation (9)) can be constructed to estimate the counterfactual survival time (T_i^0).^{14,38}

$$T_i^0 = \int_0^{T_i} \exp[-\psi Z_i A_i(t)] dt, \quad (9)$$

where Z_i is the randomization variable, A_i is a binary adherence variable that equals 1 when a patient initiated the treatment and 0 otherwise, T_i is the observed survival time, and the factor $\exp(\psi)$ is the causal effect (the value by which survival time is shrunk or expanded as an effect of the treatment). At the “true” value of the parameter ψ (which we can find using G-estimation), the counterfactual survival between randomized groups will be equal, and that value of ψ would be the point estimate of the treatment effect.

RPSFTM allows us to deal with time-dependent initiation issues and can deal with time-dependent confounding. The original RPSFTM was extended to incorporate baseline covariates to improve the precision of estimators^{37,38} and uses recensoring to allow the method to deal with potentially informative censoring in the counterfactual data set.^{33,40} As limitations, the RPSFTM can only be used for adjusting for the initiation type of nonadherence, and it relies on the common treatment effect assumption, which is difficult to test.

Pharmacometrics-Based Methods

Pharmacokinetics and pharmacodynamics-based method. The Pharmacokinetics and pharmacodynamics (PKPD)-based methods model all types of nonadherence for estimating treatment effectiveness. PKPD-based methods require model development and fitting using appropriate data, typically collected during each phase of clinical

drug development, as well as simulation based on different patterns of adherence, dosing schedules, and patient characteristics where covariate effects are relevant. The pharmacodynamic endpoint may be of direct relevance (e.g., anticoagulant international normalized ratio [INR]) or may require extrapolation to estimate the link between the PKPD parameter and the outcome of interest (e.g., risk of cardiovascular events) using evidence from the literature.^{44,58} PKPD makes the exclusion restriction assumption, that is, randomization affects the outcome only through the exposure treatment.

The PKPD method has been extended for modeling varying nonadherence and estimating adherence-adjusted cost-effectiveness of treatments.^{44,49} The main limitation of this method is its reliance on an accurate model specification and PKPD data, which might not be routinely available in RCTs or observational studies across disease areas.

Appropriateness of Nonadherence Adjustment Methods to the HTA Context

The results based on the criteria applied for assessing appropriateness (suitability of the estimand, type of nonadherence, and possibility to account for real-world nonadherence levels) for each of the identified adjustment methods is provided in Table 3. Five methods (ITT, MSMs, SNFTMs, RPSFTMs, and PKPD) generate the estimand that is appropriate for HTA (covering the entire study population), with only 3 of these being capable of accounting for all types of nonadherence (MSMs, SNFTMs, and PKPD). Five methods are thought to be capable of reestimating effectiveness for real-world levels of nonadherence. When looking across all 3 facets of estimating effectiveness for HTA, g-methods and PKPD appear to be more appropriate.

The main differences between the 4 classes of methods are the estimands, assumptions, and the types of nonadherence that each method is capable of dealing with. Simple methods are only valid in the presence of random (nonselective) nonadherence. Principal stratification methods are capable of adjusting for some types of nonadherence, but their estimands seem inappropriate for the HTA context based on the criteria we set out in the Methods section. Both g-methods and PKPD can deal with real-world nonadherence, and their estimands are appropriate for HTA. G-methods are similar in terms of their capability for adjusting effectiveness estimates for counterfactual nonadherence levels. However, PKPD is a unique method that uses a different approach compared to g-methods.

In practice, the analyst could apply g-methods to individual patient-level data from an RCT to reestimate treatment effectiveness (adjusted for nonadherence) for populating cost-effectiveness models. Real-world adherence levels could be estimated from registry data or observational studies. All g-methods could be applied using standard software (e.g., SAS, Stata, or R).^{12,59–61} While g-methods could be applied to real RCT data sets, the PKPD approach relies on simulating an RCT data set based on a specified pattern of nonadherence (e.g., real-world adherence) and then uses the simulated data for generating the adjusted estimates. This would require data (including PKPD data) collected at different phases of clinical drug development. The PKPD method can be applied using a specialist software (e.g., NONMEM) or standard software (e.g., R) for simulating the data set.⁶²

Discussion

A total of 12 methods for adjusting for nonadherence in the context of time-to-event outcomes were identified and briefly described in this article. The proposed taxonomy classifies adjustment methods into 4 groups: 1) simple methods, 2) principal stratification methods, 3) g-methods, and 4) pharmacometrics-based methods. Each method makes specific assumptions and has associated limitations, and many of these assumptions are non-testable. Identification and collection of baseline and time-dependent confounders were identified as crucial for adjusting for nonadherence.

The purpose of adjustment was highlighted as a fundamentally important issue as estimands differ between the methods, as do the practicalities of using the method to reestimate effectiveness for alternative levels of adherence. G-methods and PKPD appear more appropriate for adjusting effectiveness estimates given real-world adherence levels and the likely existence of time-dependent confounding in RCT data sets. Simple methods and principal stratification methods cannot reestimate effectiveness based on alternative, suboptimal adherence levels. The Wtd PP method uses weights similar to IPCW, but the estimand is restricted to the complier subpopulation.

Many potentially relevant papers with a focus on cost-effectiveness aspects were excluded as these did not provide a methodological contribution. This gap in the methodological literature on CEA for modeling the link between nonadherence and treatment effectiveness is consistent with findings from other studies.^{8,63} A previous review by Hughes et al.²⁷ reported 5 methods for adjusting cost-effectiveness for nonadherence, which was focused on pharmacoeconomic models rather than the

impact of nonadherence on effectiveness. In that review, the PKPD approach is the only method relevant to our review, with the other methods being health-economic models (decision tree, Markov, discrete-event simulation) for incorporating adherence-adjusted treatment effects in economic evaluations.

Many of the methods identified by our review have been described and compared (mostly in pairwise comparisons) in the methodological literature.^{13,14,34,64,65} Mostazir et al.⁶⁶ published a review of methods for handling nonadherence to intervention protocols in RCTs that identified some of the methods; however, their review missed several relevant methods due to the restricted search strategy used. The limitations of simple methods in adjusting for nonadherence are consistently reported in the methodological literature.^{33,34,39,45,56,64,67} It has been noted previously that principal stratification methods require a binary adherence variable (e.g., compliers/noncompliers), which may be problematic as a threshold is required, and this is often arbitrarily decided (e.g., 80% adherence level).⁶⁸ This may also be an issue for g-methods and PKPD methods, where, in adjusting for nonadherence, we first need to define what constitutes “adherence.” This review has identified which nonadherence adjustment methods are likely to be useful in an HTA context. However, the remaining methods all have limitations, and their performance in relevant scenarios is unknown.

This review has used novel iterative search techniques and followed international guidelines^{16–18} but has limitations. First, a higher number of papers were excluded at the title screening stage because the paper’s title was not relevant. Second, we excluded non-peer-reviewed reports and other gray literature. While these two limitations might be an issue, the final list of included papers was checked by 2 experts, and we are confident that no important relevant method was missed. Third, minor variants of methods extensions are not included (e.g., proposing alternative censoring mechanisms for IPCW),⁶⁹ which is inevitably a subjective decision. These decisions were based on discussions among the authors. Finally, the review does not assess the performance of the alternative methods; therefore, further research (well-conducted simulation studies) is warranted to provide recommendations for application in the HTA context.

In conclusion, economic evaluations frequently ignore the adjustment of treatment effectiveness for patient nonadherence, which carries the risk of producing misleading cost-effectiveness evidence if adherence levels in the real world differ from trials. A range of statistical methods is available for adjusting estimates of treatment effectiveness in the presence of patient nonadherence, although g-

methods and PKPD appear to be more promising to account for real-world adherence levels in HTA. Further research is warranted to assess the performance of these methods.



Authors’ Note

This work was done in SchARR, University of Sheffield, UK. An abstract from this work was presented as an oral presentation at the European Society for Patient Adherence, Compliance and Persistence (ESPACOMP) 22nd Conference in Dublin, Ireland (November 30, 2018).

Acknowledgments

We thank Ian White, PhD, for his advice on the review work and comments on an early version of this paper.

ORCID iDs

Abualbishr Alshreef  <https://orcid.org/0000-0003-2737-1365>
Dyfrig Hughes  <https://orcid.org/0000-0001-8247-7459>

Supplemental Material

Supplementary material for this article is available on the *Medical Decision Making* Web site at <http://journals.sagepub.com/home/mdm>.

References

1. Hughes DA, Bagust A, Haycox A, Walley T. The impact of non-compliance on the cost-effectiveness of pharmaceuticals: a review of the literature. *Health Econ.* 2001;10(7):601–15.
2. Cleemput I, Kesteloot K, DeGeest S. A review of the literature on the economics of noncompliance: room for methodological improvement. *Health Policy.* 2002;59:65–94.
3. Barber N. Should we consider non-compliance a medical error? *Qual Saf Health Care.* 2002;11:81–4.
4. Gupta SK. Intention-to-treat concept: a review. *Perspect Clin Res.* 2011;2(3):109–12.
5. Akachaa M, Bretza F, Ohlssen D, Rosenkran G, Schmidli H. Estimands and their role in clinical trials. *Stat Biopharm Res.* 2017;9(3):268–71.
6. European Medicines Agency. ICH E9 (R1) addendum on estimands and sensitivity analysis in clinical trials to the guideline on statistical principles for clinical trials European Medicines Agency. Available from: https://www.ema.europa.eu/documents/scientific-guideline/draft-ich-e9-r1-addendum-estimands-sensitivity-analysis-clinical-trials-guideline-statistical_en.pdf
7. Shroufi A, Powles J. Adherence and chemoprevention in major cardiovascular disease: a simulation study of the benefits of additional use of statins. *J Epidemiol Community Health.* 2010;64(2):109–13.

8. Hughes D, Charles J, Dawoud D, et al. Conducting economic evaluations alongside randomised trials: current methodological issues and novel approaches. *Pharmacoeconomics*. 2016;34(5):447–61.
9. Kadambi A, Leipold RJ, Kansal AR, Sorensen S, Getsios D. Inclusion of compliance and persistence in economic models: past, present and future. *Appl Health Econ Health Policy*. 2012;10(6):365–79.
10. National Institute for Health and Care Excellence (NICE). Guide to the methods of technology appraisal: processes and methods guides. 2013. Available from: <https://www.nice.org.uk/process/pmg9/chapter/foreword>
11. National Collaborating Centre for Primary Care, Royal College of General Practitioners. Medicines adherence: involving patients in decisions about prescribed medicines and supporting adherence. 2009. Available from: <https://www.nice.org.uk/guidance/cg76/evidence/full-guideline-24-2062957>
12. Sterne JAC, Tilling K. G-estimation of causal effects, allowing for time-varying confounding. *Stata J*. 2002;2(2):164–82.
13. Robins JM. Correction for non-compliance in equivalence trials. *Stat Med*. 1998;17(3):269–302.
14. Robins JM, Tsiatis AA. Correcting for noncompliance in randomized trials using rank preserving structural failure time models. *Commun Stat Theory Methods*. 1991;20(8):2609–31.
15. Angrist JD, Imbens GW, Rubin DB. Identification of causal effects using instrumental variables. *J Am Stat Assoc*. 1996;91(434):444–55.
16. Centre for Reviews and Dissemination. *Systematic Reviews: CRD's Guidance for Undertaking Reviews in Health Care*. York, UK: Centre for Reviews and Dissemination, University of York; 2008.
17. Schlosser RW, Wendt O, Bhavnani S, Nail-Chiwetalu B. Use of information-seeking strategies for developing systematic reviews and engaging in evidence-based practice: the application of traditional and comprehensive Pearl Growing. A review. *Int J Lang Comm Dis*. 2006;41(5):567–82.
18. Geest SD, Zullig LL, Dunbar-Jacob J, et al. ESPACOMP Medication Adherence Reporting Guideline (EMERGE). *Ann Intern Med*. 2018;169(1):30–5.
19. Moher D, Liberati A, Tetzlaff J, Altman D. Preferred reporting items for systematic reviews and meta-analyses: the PRISMA statement. *Ann Intern Med*. 2009;151(4):264–9.
20. Alshreef A, Dixon S, Latimer N, Tappenden P, McKane W. Systematic review of methods to account for patient non-adherence on estimating treatment effect and cost-effectiveness of chronic medications: review protocol. 2018. Available from: http://www.crd.york.ac.uk/PROSPERO/display_record.php?ID=CRD42018095544
21. Wang W, Husan F, Chow SC. The impact of patient compliance on drug concentration profile in multiple doses. *Stat Med*. 1996;15(6):659–69.
22. Robins JM, Finkelstein DM. Correcting for noncompliance and dependent censoring in an AIDS Clinical Trial with inverse probability of censoring weighted (IPCW) log-rank tests. *Biometrics*. 2000;56(3):779–88.
23. Vermeire E, Hearnshaw H, Royen PV, Denekens J. Patient adherence to treatment: three decades of research. A comprehensive review. *J Clin Pharm Ther*. 2001;26(5):331–42.
24. Chue PS, Heeg B, Buskens E, van-Hout BA. Modelling the impact of compliance on the costs and effects of long-acting risperidone in Canada. *Pharmacoeconomics*. 2005;23(Suppl 1):62–74.
25. Vrijens B, Goetghebeur E, de Klerk E, Rode R, Mayer S, Urquhart J. Modelling the association between adherence and viral load in HIV-infected patients. *Stat Med*. 2005;24(17):2719–31.
26. Labbé L, Verotta D. A non-linear mixed effect dynamic model incorporating prior exposure and adherence to treatment to describe long-term therapy outcome in HIV-patients. *J Pharmacokinetic Pharmacodyn*. 2006;33(4):519–42.
27. Hughes D, Cowell W, Koncz T, Cramer J. Methods for integrating medication compliance and persistence in pharmacoeconomic evaluations. *Value Health*. 2007;10(6):498–509.
28. Vrijens B, Geest SD, Hughes DA, et al. A new taxonomy for describing and defining adherence to medications. *Br J Clin Pharmacol*. 2012;73(5):691–705.
29. Latimer N. *Systematic Review of Statistical Methods for Adjusting Survival Estimates in the Presence of Treatment Crossover*. Sheffield, UK: University of Sheffield; 2012.
30. Hernán MA, Robins JM. *Causal Inference*. Boston, MA: Harvard T. H. Chan School of Public Health; 2018.
31. Robins JM, Blevins D, Ritter G, Wulfsohn M. G-estimation of the effect of prophylaxis therapy for pneumocystis-carinii pneumonia on the survival of aids patients. *Epidemiology*. 1992;3(4):319–36.
32. Baker SG. Analysis of survival data from a randomized trial with all-or-none compliance: estimating the cost-effectiveness of a cancer screening program. *J Am Stat Assoc*. 1998;93(443):929–34.
33. White IR, Goetghebeur EJT. Clinical trials comparing two treatment policies: which aspects of the treatment policies make a difference? *Stat Med*. 1998;17(3):319–39.
34. Korhonen PA, Laird NM, Palmgren J. Correcting for non-compliance in randomized trials: an application to the ATBC Study. *Stat Med*. 1999;18(21):2879–97.
35. Hernan MA, Brumback B, Robins JM. Marginal structural models to estimate the joint causal effect of nonrandomized treatments. *J Am Stat Assoc*. 2001;96(454):440–8.
36. Loeyts T, Vansteelandt S, Goetghebeur E. Accounting for correlation and compliance in cluster randomized trials. *Stat Med*. 2001;20(24):3753–67.
37. Korhonen P, Palmgren J. Effect modification in a randomized trial under non-ignorable non-compliance: an application to the alpha-tocopherol beta-carotene study. *J R Stat Soc Ser C Appl Stat*. 2002;51:115–33.
38. Loeyts T, Goetghebeur E. Baseline information in structural failure time estimators for the effect of observed treatment compliance. *Stat Med*. 2002;21(9):1173–88.

39. Loeys T, Goetghebeur E. A causal proportional hazards estimator for the effect of treatment actually received in a randomized trial with all-or-nothing compliance. *Biometrics*. 2003;59(1):100–5.
40. Matsui S. Analysis of times to repeated events in two-arm randomized trials with noncompliance and dependent censoring. *Biometrics*. 2004;60(4):965–76.
41. Cuzick J, Sasieni P, Myles J, Tyrer J. Estimating the effect of treatment in a proportional hazards model in the presence of non-compliance and contamination. *J R Stat Soc Ser B Stat Methodol*. 2007;69:565–88.
42. Lin JY, Ten Have TR, Bogner HR, Elliott MR. Baseline patient characteristics and mortality associated with longitudinal intervention compliance. *Stat Med*. 2007;26(28):5100–15.
43. Nie H, Cheng J, Small DS. Inference for the effect of treatment on survival probability in randomized trials with noncompliance and administrative censoring. *Biometrics*. 2011;67(4):1397–405.
44. Pink J, Pirmohamed M, Lane S, Hughes DA. Cost-effectiveness of pharmacogenetics-guided warfarin therapy vs. alternative anticoagulation in atrial fibrillation. *Clin Pharmacol Ther*. 2014;95(2):199–207.
45. Wu Y, Zhao L, Hou Y, Li K, Zhou X. Correcting for non-compliance in randomized non-inferiority trials with active and placebo control using structural models. *Stat Med*. 2015;34(6):950–65.
46. Yu W, Chen K, Sobel ME, Ying ZL. Semiparametric transformation models for causal inference in time-to-event studies with all-or-nothing compliance. *J R Stat Soc Ser B Stat Methodol*. 2015;77(2):397–415.
47. Li S, Gray RJ. Estimating treatment effect in a proportional hazards model in randomized clinical trials with all-or-nothing compliance. *Biometrics*. 2016;72(3):742–50.
48. Gao X, Zheng M. Estimating the causal effects in randomized trials for survival data with a cure fraction and non compliance. *Commun Stat Theory Methods*. 2017;46(8):4065–87.
49. Hill-McManus D, Marshall S, Soto E, Lane S, Hughes D. Impact of non-adherence and flare resolution on the cost effectiveness of treatments for gout: application of a linked pharmacometric/pharmacoeconomic model. *Value Health*. 2018;21(12):1373–81.
50. Frangakis CE, Rubin DB. Principal stratification in causal inference. *Biometrics*. 2002;58(1):21–9.
51. Neyman JS. On the application of probability theory to agricultural experiments. *Stat Sci*. 1990;5(4):465–80.
52. Rubin D. Estimating causal effects of treatments in randomized and non-randomized studies. *J Educ Psychol*. 1974;66:688–701.
53. Robins JM, Greenland S, Hu F-C. Estimation of the causal effect of a time-varying exposure on the marginal mean of a repeated binary outcome. *J Am Stat Assoc*. 1999;94(447):687–700.
54. Robins J. A new approach to causal inference in mortality studies with sustained exposure periods—application to control of the healthy worker survivor effect. *Math Model*. 1986;7(9):1393–512.
55. Odondi Lo, McNamee R. Performance of statistical methods for analysing survival data in the presence of non-random compliance. *Stat Med*. 2010;29(29):2994–3003.
56. Little RJ, Long Q, Lin XH. A comparison of methods for estimating the causal effect of a treatment in randomized clinical trials subject to noncompliance. *Biometrics*. 2009;65(2):640–9.
57. Lok JJ. *Causal Inference: Structural Nested Models. Summer Short Course “An Introduction to Causal Inference.”* Cambridge, MA: Harvard T. H. Chan School of Public Health; 2018.
58. Hughes DA, Walley T. Economic evaluations during early (phase II) drug development: a role for clinical trial simulations? *Pharmacoeconomics*. 2001;19(11):1069–77.
59. Hernán MA, Brumback B, Robins JM. Marginal structural models to estimate the causal effect of zidovudine on the survival of HIV-positive men. *Epidemiology*. 2000;11(5):561–70.
60. Fewell Z, Hernán MA, Wolfe F, Tilling K, Choi H, Sterne JAC. Controlling for time-dependent confounding using marginal structural models. *Stata J*. 2004;4(4):402–20.
61. Schwab J, Lendle S, Petersen M, Laan Mvd, Gruber S. Longitudinal targeted maximum likelihood estimation. The R Foundation. 2018. Available from: <https://cran.r-project.org/web/packages/ltmle/ltmle.pdf>
62. Wojciechowski J, Hopkins A, Upton R. Interactive pharmacometric applications using R and the Shiny package. *CPT Pharmacometr Syst Pharmacol*. 2015;4(3):146–59.
63. Muszbek N, Brixner D, Benedict A, Keskinaslan A, Khan ZM. The economic consequences of noncompliance in cardiovascular disease and related conditions: a literature review. *Int J Clin Pract*. 2008;62(2):338–51.
64. Kubo Y, Sterling LR, Parfrey PS, et al. Assessing the treatment effect in a randomized controlled trial with extensive non-adherence: the EVOLVE trial. *Pharm Stat*. 2015;14(3):242–51.
65. Zhang M, Tsiatis AA, Davidian M, Pieper KS, Mahaffey KW. Inference on treatment effects from a randomized clinical trial in the presence of premature treatment discontinuation: the SYNERGY trial. *Biostatistics*. 2011;12(2):258–69.
66. Mostazir M, Taylor RS, Henley W, Watkins E. An overview of statistical methods for handling nonadherence to intervention protocol in randomized control trials: a methodological review. *J Clin Epidemiol*. 2019;108:121–31.
67. Murray EJ, Hernan MA. Adherence adjustment in the Coronary Drug Project: a call for better per-protocol effect estimates in randomized trials. *Clinical Trials*. 2016;13(4):372–8.
68. Gellad WF, Thorpe CT, Steiner JF, Voils CI. The myths of medication adherence. *Pharmacoepidemiol Drug Saf*. 2017;26(12):1437–41.
69. Cain LE, Cole SR. Inverse probability-of-censoring weights for the correction of time-varying noncompliance in the effect of randomized highly active antiretroviral therapy on incident AIDS or death. *Stat Med*. 2009;28(12):1725–38.