

Loop-Mediated Isothermal Amplification for the Detection of *Xanthomonas arboricola* pv. *pruni* in Peaches

Weilan Li¹, Seung-Yeol Lee^{1,2}, Chang-Gi Back³, Leonid N. Ten¹, and Hee-Young Jung^{1,2*}

¹School of Applied Biosciences, Kyungpook National University, Daegu 41566, Korea

²Institute of Plant Medicine, Kyungpook National University, Daegu 41566, Korea

³Horticultural and Herbal Crop Environment Division, National Institute of Horticultural and Herbal Science, Wanju 55365, Korea

(Received on July 16, 2019; Revised on October 28, 2019; Accepted on October 28, 2019)

To detect *Xanthomonas arboricola* pv. *pruni*, a loop-mediated isothermal amplification (LAMP) detection method were developed. The LAMP assay was designed to test crude plant tissue without pre-extraction, or heating incubation, and without advanced analysis equipment. The LAMP primers were designed by targeting an ABC transporter ATP-binding protein, this primer set was tested using the genomic DNA of *Xanthomonas* and non-*Xanthomonas* strains, and a ladder product was generated from the genomic DNA of *X. arboricola* pv. *pruni* strain but not from 12 other *Xanthomonas* species strains and 6 strains of other genera. The LAMP conditions were checked with the healthy leaves of 31 peach varieties, and no reaction was detected using either the peach leaves or the peach DNA as a template. Furthermore, the high diagnostic accuracy of the LAMP method was confirmed with 13 *X. arboricola* pv. *pruni* strains isolated from various regions in Korea, with all samples exhibiting a positive reaction in LAMP assays. In particular, the LAMP method successfully detected the pathogen in diseased peach leaves and fruit in the field, and the LAMP conditions were proven to be a reliable diagnostic method for the specific detection

and identification of *X. arboricola* pv. *pruni* in peach orchards.

Keywords : loop-mediated isothermal amplification, peach, shot hole disease, *Xanthomonas arboricola* pv. *pruni*

Handling Editor : Han, Sang-Wook

Xanthomonas arboricola pv. *pruni* is the causal agent of bacterial shot hole on a wide range of *Prunus* species, including apricot, plum, and peach trees (Ritchie, 1995; Vauterin et al., 1995). This pathogen causes necrotic lesions on the leaves, sunken lesions on the fruit, and cankers on the twigs, leading to serious crop losses (Park et al., 2010). In years, the loss of fruit among seriously susceptible cultivars can reach 100% (Ritchie, 1999). *X. arboricola* pv. *pruni* can be harbored in the budwood, meaning that the buds used for plant proliferation can spread the pathogen to other regions that were previously free of the disease (Goodman and Hattingh, 1986; Zaccardelli et al., 1998). New peach species that exhibit resistance to the disease have been studied and cultivated, however, no variant has successfully shown a plant defense reaction against the pathogen (Hammerschlag, 2000). Instead, effective phyto-anitary detection methods have been considered helpful for the control of *X. arboricola* pv. *pruni* infections. Currently employed methods for the identification of *X. arboricola* pv. *pruni* are conventional PCR (Pagani, 2005), duplex PCR (Pothier et al., 2011), loop-mediated isothermal amplification (LAMP) detection (Bühlmann et al., 2013), lateral flow immunoassays (López-Soriano et al., 2017), and real-time PCR amplification (Garita-Cambronero et al., 2017; Palacio-Bielsa et al., 2011). Although efficient control of *X. arboricola* pv. *pruni* requires a rapid, sensitive,

*Corresponding author.

Phone) +82-53-950-5760, FAX) +82-53-950-6758

E-mail) heeyoung@knu.ac.kr

ORCID

Hee-Young Jung

https://orcid.org/0000-0002-4254-3367

© This is an Open Access article distributed under the terms of the Creative Commons Attribution Non-Commercial License (<http://creativecommons.org/licenses/by-nc/4.0>) which permits unrestricted noncommercial use, distribution, and reproduction in any medium, provided the original work is properly cited.

Articles can be freely viewed online at www.ppjonline.org.

and reliable diagnosis system, however, these methods are inconvenient for field identification.

LAMP was originally reported by Notomi et al. in 2000 and has since become widely used for diagnosis because of its potentially rapid, accurate, cost-effective, and convenient amplification method (Notomi et al., 2000). The amplification products are stem-loop DNA structures shaped like cauliflower with multiple loops that are formed from various inverted repeats of the target (Iwamoto et al., 2003). The resulting amplicons are visualized by adding SYBR Green I to the reaction tube.

In this article, we describe the analysis of a Xap1 strain isolated from peach leaves with bacterial shot hole symptoms, which was identified as *X. arboricola* pv. *pruni*. Based on the genomic sequence of *X. arboricola* pv. *pruni*, we designed a LAMP primer system and optimized the LAMP reaction conditions using Xap1 as a positive control. The proposed LAMP method was successfully used in the diagnosis of the pathogen in field samples, providing simple and convenient field identification.

Materials and Methods

Bacterial isolation and culture conditions. Peach leaves with bacterial shot hole symptoms were collected, and tissue sections from the lesions on the diseased leaves were disinfected with 70% ethanol, cut, crushed using a mortar and pestle in sterile distilled water, and serially diluted. Each diluted sample (100 μ l) was spread onto nutrient-yeast-glycerol (NYG) agar (Tan et al., 2014) and incubated at 28°C for three days. On the plates containing the 10⁻³ diluted samples, 20-30 colonies appeared. The yellowish and transparent colonies were purified and identified. One positive strain was designated as Xap1, it was subcultured on NYG agar at 28°C and maintained in a glycerol suspen-

sion (20%, w/v) at -70°C.

Primer design. The isolate was identified using 16S ribosomal RNA (Lane, 1991; Snaidr et al., 1997) and a putative ABC transporter ATP-binding protein gene sequence (Pagani, 2005; Pothier et al., 2011). The primers for the 16S rRNA gene sequence were 9F (5'-GAGTTTGATCCTG-GCGGCTCAG-3') and 1512R (5'-ACGGCTACCTTGT-TACGACTT-3'), targeting all bacterial members. In recent years, several bacterial genomes have been sequenced, however, the genes sequences can be partial due to the whole genome shotgun sequencing method, which limiting the prediction of genes structural and functional properties. It is known that the putative ABC transporter ATP-binding protein gene sequence is a species-specific sequence for *X. arboricola* pv. *pruni* and has been widely used for its identification (Pagani, 2005; Pothier et al., 2011), furthermore, it was well studied and the gene sequences are available on National Center for Biotechnology Information (NCBI) website, therefore, the putative ABC transporter ATP-binding protein gene sequence was chosen as a target sequence for the identification of *X. arboricola* pv. *pruni*. Primers targeting the putative ABC transporter ATP-binding protein gene sequence were used for later confirmation, the forward and reverse primers used were Y17CoF (5'-GACGTGGTGATCAGCGAGT-CATTC-3') and Y17CoR (5'-GACGTGGTGATGAT-GATCTGC-3'), respectively. The Y17CoF/Y17CoR PCR primers are known for their detection of *X. arboricola* pv. *pruni* (Pagani, 2005). The LAMP primers were designed using PrimerExplorer V4 (<http://primerexplorer.jp/e/>), four primers were used in this study (Fig. 1): outer primers F3 (5'-AGACGTCTAGGGCAAGCC-3') and B3 (5'-TGC-TAGAACTGACGCTGAGA-3') and inner primers FIP (5'-ATGGGGGCCCAATCTCTAGCAATTTTGTC-

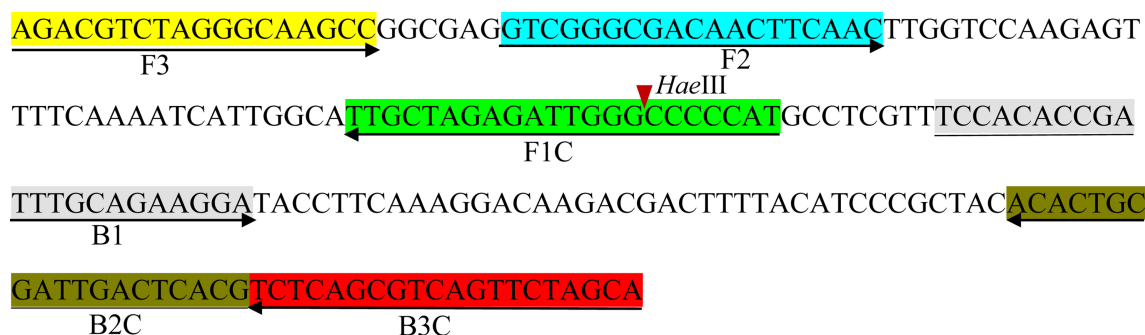


Fig. 1. Schematic representation of the primer design for the proposed loop-mediated isothermal amplification assay showing the position of the six primers spanning the target gene and the nucleotide sequences of the putative ABC transporter ATP-binding protein gene sequence used to design the primers. The right arrow indicates a sense sequence used for the primer, while the left arrow indicates the complementary sequence used for the primer. The red arrowhead indicates a restricted enzyme site.

GGGCGACAACCTTCAAC-3') and BIP (5'-TCCACAC-CGATTTGCAGAAGGATTTTCGTGAGTCAATC-GCAGTGT-3'). A TTTT linker was added to the inner primer to form a loop structure.

PCR amplification and sequence analysis. Genomic DNA was extracted using the hexadecyl trimethyl ammonium bromide (Sigma-Aldrich, St. Louis, MO, USA) purification method, which has been described previously (Ausubel et al., 1992). To amplify the 16S rRNA gene sequence and the putative ABC transporter ATP-binding protein gene sequence, the PCR condition was conducted as following: initial denaturation at 95°C for 5 min followed by 35 cycles at 95°C for 30 s, 55°C or 60°C for 30 s, 72°C for 1.5 min, and a final extension step at 72°C for 7 min. The obtained sequences were compiled using SeqMan software (DNASTAR, Madison, WI, USA). Pairwise 16S rRNA gene sequence similarities with closely related species were calculated using both the EzBioCloud server (Yoon et al., 2017) and the BLAST search program at the NCBI website (<http://blast.ncbi.nlm.nih.gov/Blast.cgi>). For species-level analysis, the specific sequence of the putative ABC transporter ATP-binding protein was analyzed using the BLAST search program on the NCBI website.

LAMP reaction and product detection. The LAMP reaction was contained 2 µl of 10× *Bst* reaction buffer, 0.5 µl of 10 mM dNTP, 0.5 µl of 10 pM F3 and B3, 2 µl of 10 pM FIP and BIP, and 1 µl of *X. arboricola* pv. *pruni* genomic DNA for a final volume of 19 µl (supplemented with double distilled water). To enhance the sensitivity of the LAMP assays, pre-heating took place at 60°C for 5 min. Following pre-heating, 1 µl of *Bst* DNA polymerase (8 units/µl, large fragment; New England Biolabs, Beverly, MA, USA) was added. To optimize the reaction temperature, the LAMP reaction was performed under various thermal conditions (50°C, 53°C, 55°C, 58°C, 60°C, 63°C, and 65°C). The resulting LAMP amplicons were visualized by adding 1 µl of 5-times diluted original SYBR Green I (Thermo Fisher Scientific, Waltham, MA, USA) to the reaction tube. A positive reaction was green, whereas the color remained orange to the naked eye for a negative reaction. An efficient reaction produced a white precipitate when visualized using a UV illuminator. Three microliters of LAMP products were electrophoresed using 2% agarose gels, followed by staining with ethidium bromide. And two microliters of LAMP products were digested by a restriction enzyme (*Hae*III), followed by electrophoresis analysis.

LAMP assays for field samples. The proposed LAMP

method was applied for the diagnosis of field samples. Thirty-two peach varieties were used for the validation testing, 4 peach varieties were tested using diseased leaves, and 31 peach varieties were tested using healthy leaves. Diseased fruit collected from several peach orchards was also tested. All of the field samples were tested in triplicate, with peach leaf samples (diameter 1 cm) or fruit samples (0.05 g) ground in 300 µl of plant extraction buffer (200 mM Tris [pH 8.0]; 250 mM NaCl; 25 mM EDTA [pH 8.0]; 0.5% sodium dodecyl sulfate). The supernatant was diluted 10 times and then 1 µl of the diluted sample was used for the LAMP reaction. Two microliters of LAMP products were digested with the *Hae*III restriction enzyme, with incubation at 37°C for 4 h. Electrophoresis was conducted using 2% agarose gels after enzyme digestion, followed by staining with ethidium bromide.

Results

Isolation and identification of causal agents. Colonies of the Gram-negative isolate Xap1 were grown on NYG agar at 28°C for 2 days. The cells were yellowish, glistening, circular, convex, mucous, slimy, and smooth. Comparative 16S rRNA gene sequence (1,398 bp) analysis revealed that strain Xap1 was phylogenetically affiliated with the members of the genus *Xanthomonas*, based on information from the EzBioCloud database. The 16S rRNA gene sequence similarity of Xap1 was investigated on the NCBI website, and it was found that it had a high similarity (100%) with various *X. arboricola* pv. *pruni* strains, such as 17-330, 17-328, 17-326, 17-324, 17-195, and a few *X. campestris* strains (MSSRF_2C28, YNCCT1, and YNCCT6). Due to the large number of closely related *X. arboricola* pv. *pruni* strains, it was impossible to identify isolate Xap1 at the species level using the 16S rRNA sequence alone. It is known that the putative ABC transporter ATP-binding protein gene sequence is unique to *X. arboricola* pv. *pruni* species and has been widely used for its identification. Therefore, the putative ABC transporter ATP-binding protein gene sequence (898 bp) obtained from Xap1 was analyzed using the BLAST search program on the NCBI website. According to the alignment, strain Xap1 exhibited 100% similarities with *X. arboricola* pv. *pruni* XAP HU1 and XAP HU2 (accession number: KY039173 and MG049921), and 99.78% similarities with *X. arboricola* pv. *pruni* BJ15 and CFBP 5530 (accession number: MF362224 and HQ896469). Moreover, the 16S rRNA gene and ABC transporter ATP-binding protein gene sequences of strain Xap1 were compared with the 13 *X. arboricola* pv. *pruni* strains (14-199, 15-096, 15-101, 15-106,

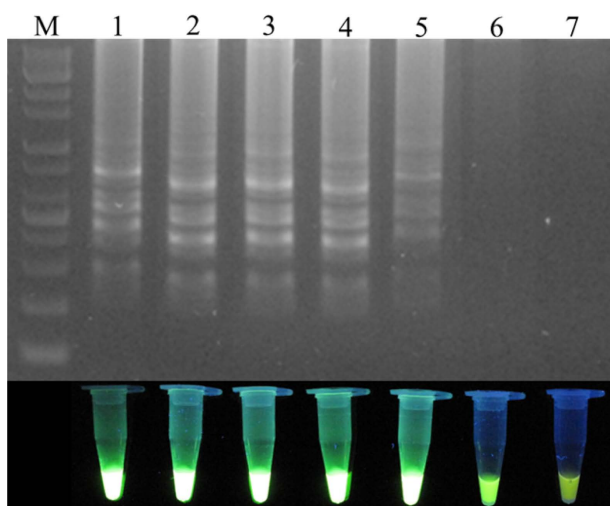


Fig. 2. Temperature optimization of the loop-mediated isothermal amplification (LAMP) primer set for the detection of *Xanthomonas arboricola* pv. *pruni*. M: 1 kb plus DNA ladder; Lanes 1-7 indicate the LAMP reaction temperatures 65°C, 63°C, 60°C, 58°C, 55°C, 53°C, and 50°C, respectively.

16-143, 16-153, 16-156, 16-244, 17-178, 17-195, 17-210, 17-213, and 17-215) which provided by Rural Development Administration, the 16S rRNA gene and ABC transporter ATP-binding protein gene sequences of strain Xap1 had a high similarity (100%) with the sequences derived from the thirteen *X. arboricola* pv. *pruni* strains. Based on this sequence data analysis, the isolate Xap1 was identified

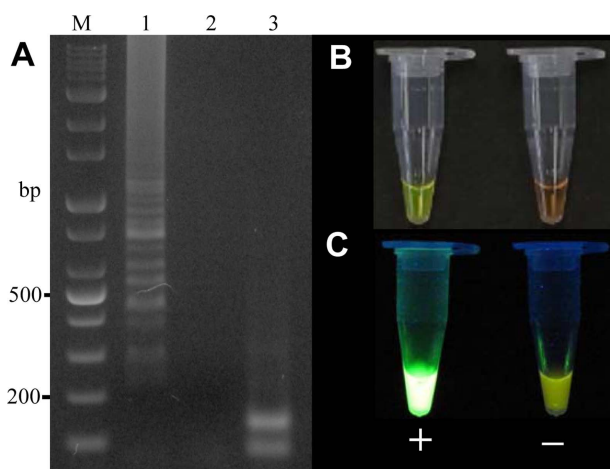


Fig. 3. Electrophoresis of the loop-mediated isothermal amplification (LAMP) products and the LAMP products digested with the *Hae*III restriction enzyme. (A) Gel-imaging analysis of the LAMP product. M: 1 kb plus DNA ladder; Lanes 1-3 indicate positive control, negative control, and LAMP products digested with *Hae*III, respectively. (B, C) Visual analysis after the addition of SYBR Green I using the naked eye and a UV illuminator, respectively.

as *X. arboricola* pv. *pruni*. The 16S rRNA gene sequences of strains Xap1, 14-199, 15-096, 15-101, 15-106, 16-143, 16-153, 16-156, 16-244, 17-178, 17-195, 17-210, 17-213, and 17-215 were deposited in NCBI GenBank with following accession number: LC507165, LC507166, LC507167, LC507168, LC507169, LC507170, LC507171, LC507172, LC507173, LC507174, LC507175, LC507176, LC507177, and LC507178, respectively.

LAMP reaction. To optimize the reaction conditions, the LAMP reaction was tested at various temperatures (Fig. 2). High efficiency was achieved at temperatures of 65°C, 63°C, 60°C, and 58°C for 45 min, with 60°C identified as the optimal temperature. The positive reactions all turned green after the addition of SYBR Green I, while the negative reactions remained orange. To confirm specific amplification, the LAMP products were digested with the *Hae*III restriction enzyme, which produced predicted fragment sizes of 88 bp and 114 bp. The difference in the LAMP products before and after enzyme treatment was analyzed using electrophoresis (Fig. 3).

Sensitivity and specificity of LAMP. To determine the analytical sensitivity of LAMP testing, the genomic DNA purified from Xap1 was diluted down to the following concentrations: 1 (180 ng/μl), 1/2, 1/4, 1/8, 1/10, 1/32, 1/50, 10⁻², and 10⁻³ (Fig. 4). It was found that 1.8 ng/μl of genomic DNA could be detected by the LAMP reaction (Fig. 4, lane 8). To evaluate the species specificity of the designed primers, 12 other *Xanthomonas* species strains

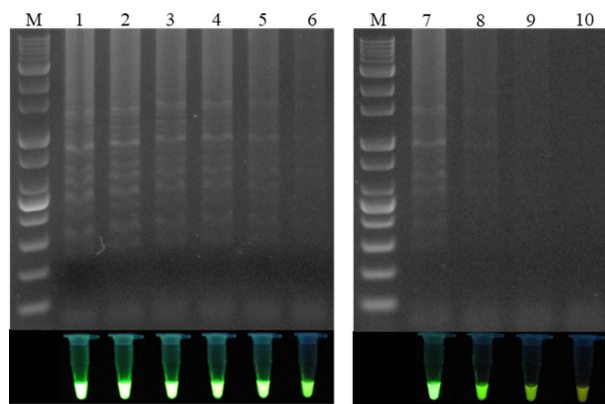


Fig. 4. Electrophoresis analysis of the loop-mediated isothermal amplification sensitivity test and visual analysis using a UV illuminator. M: 1 kb plus DNA ladder; lane 1: no dilution (180 ng/μl); lane 2: 1/2 dilution (90 ng/μl); lane 3: 1/4 dilution (45 ng/μl); lane 4: 1/8 dilution (22.5 ng/μl); lane 5: 1/10 dilution (18 ng/μl); lane 6: 1/32 dilution (5.6 ng/μl); lane 7: 1/50 dilution (3.6 ng/μl); lane 8: 10⁻² dilution (1.8 ng/μl); lane 9: 10⁻³ dilution (0.18 ng/μl); lane 10: 10⁻⁴ dilution (0.018 ng/μl).

Table 1. *Xanthomonas* spp. and other bacterial strains used for the analysis of the specificity of the LAMP assays developed in this study

Species	Strain	Host	PCR ^a	LAMP ^b
<i>Xanthomonas arboricola</i> pv. <i>pruni</i>	Xap1	Peach	+	+
<i>X. axonopodis</i> pv. <i>phaseoli</i>	KACC 10559	Bean	–	–
<i>X. axonopodis</i> pv. <i>citri</i>	KCTC 2856	Citrus	–	–
<i>X. axonopodis</i> pv. <i>allii</i>	LMG 25672	Onion	–	–
<i>X. campestris</i> pv. <i>malvacearum</i>	KACC 12874	Cotton	–	–
<i>X. campestris</i> pv. <i>glycines</i>	KACC 10491	Soybean	–	–
<i>X. campestris</i> pv. <i>zantedeschiae</i>	NCPPB 4326	White flowered calla lily	–	–
<i>X. axonopodis</i> pv. <i>poinsetticola</i>	NCPPB 581	Poinsettia	–	–
<i>X. campestris</i> pv. <i>hyacinthi</i>	NCPPB 205	Hyacinth	+	–
<i>X. campestris</i> pv. <i>campestris</i>	LMG 559	Crucifers	–	–
<i>X. cucurbitae</i>	LMG 8662	Watermelon	–	–
<i>X. oryzae</i> pv. <i>oryzae</i>	KACC 10331	Rice	–	–
<i>X. translucens</i>	KCTC 2751	Cereal crops	–	–
<i>Acidovorax facilis</i>	LMG 2193	NR	+	–
<i>Burkholderia gladioli</i> pv. <i>alliiicola</i>	NCPPB 947	Onion	–	–
<i>B. caryophylli</i>	NCPPB 2151	Carnation	–	–
<i>Spirosoma lituiforme</i>	KCTC 52724	NR	–	–
<i>S. horti</i>	KCTC 52728	NR	–	–
<i>S. humi</i>	KCTC 52729	NR	–	–

LAMP, loop-mediated isothermal amplification; KACC, Korean Agricultural Culture Collection; LMG, Bacterial Collection, Laboratorium voor Microbiologie, Universiteit Gent, Belgium; KCTC, Korean Collection for Type Cultures; NCPPB, National Collection of Plant Pathogenic Bacteria; NR, not reported.

^aPCR using Y17CoF and Y17CoR.

^bLAMP method developed in this study.

^c+, positive reaction; –, negative reaction.

and six strains from other genera were tested using the LAMP reaction with their genomic DNA (Table 1), and specific PCR was used to compare the sensitivity of the proposed LAMP assays. All of the *Xanthomonas* and non-*Xanthomonas* strains were tested with PCR using primers Y17CoF/Y17CoR. It was found that the LAMP assay was more accurate than the traditional PCR method, with only the strain Xap1 producing a positive reaction in the LAMP test, while two strains of *X. campestris* pv. *hyacinthi* and *Acidovorax facilis* had positive reactions in the PCR test using primers Y17CoF/Y17CoR. LAMP specificity was also tested using 1 µl of genomic DNA from 31 healthy peach varieties (Table 2). It was subsequently found that the LAMP assay was able to specifically detect *X. arboricola* pv. *pruni*.

In addition, the LAMP method was tested with 13 *X. arboricola* pv. *pruni* strains isolated from various regions in Korea (Table 3). Conforming to the results for regular PCR analysis using the primers Y17CoF/Y17CoR, all of the *X. arboricola* pv. *pruni* strains exhibited a positive reaction in the LAMP assays, indicating that the proposed LAMP primer system can specifically diagnose the presence of *X.*

arboricola pv. *pruni*.

Validation of the LAMP assay using field samples. The proposed LAMP assay was validated using plant samples from the field. For this purpose, healthy leaves and leaves with shot hole disease from naturally infected plants were tested. Leaf samples from 32 peach varieties were analyzed with the proposed LAMP assay (Table 2, Fig. 5A), and it was found that only the diseased leaves had a positive reaction, in particular, the LAMP assay were succeed for leaves without invisible symptoms, with the healthy leaves producing a negative reaction (Fig. 5B). Confirming the specific amplification, all of the positive LAMP products were digested by the *HaeIII* restriction enzyme (Fig. 5C). This indicates that the proposed LAMP assay successfully detected the pathogen *X. arboricola* pv. *pruni* in the diseased peach leaves. The effectiveness of the LAMP method was also validated on peach fruit bearing the bacterial shot hole disease (Fig. 5A), all of the diseased fruit had a positive reaction in the LAMP assays (Fig. 5B and C).

In conclusion, the LAMP method was successful in the rapid and accurate detection of field samples, confirming

Table 2. Peach varieties used for the validation of the LAMP assays developed in this study

Health condition	Peach varieties	LAMP result	Peach varieties	LAMP result
Diseased leaves (symptoms or no symptoms)	Daemyeong	+ ^a	Sulwooro 4-55	+
	Baekmijosaeng	+	Hikawa Hakuho	+
Healthy leaves	Madoka	–	Keunhong	–
	Hakuho	–	Subong	–
	Baekhyang	–	Baekmijosaeng	–
	Kanoiwa Hakuto	–	AmKing	–
	Changbangjosaeng	–	Prita	–
	Sin Hakuto	–	Sinbi	–
	Cheonhong	–	Sajajosaeng	–
	DaehwaJosaeng	–	Chiyomaru	–
	Kawanakajima Hakuto	–	Wolbongjosaeng	–
	Daemyeong	–	Miskayo	–
	Chiyomaru	–	Sunfre	–
	Hikawa Hakuho	–	Yume Fuji	–
	Yonghwang Baekdo	–	Hikawa Hakuho	–
	Akatsuki	–	Great Jumbo Akatsuki	–
	Red Start	–	Geumgang Sumil	–
	Takinosawa Gold	–		

LAMP, loop-mediated isothermal amplification.

^a+, positive reaction; –, negative reaction.

that it is a reliable diagnostic method for the specific detection and identification of *X. arboricola* pv. *pruni* in peach orchards in Korea.

Discussion

X. arboricola pv. *pruni* is the cause of shot hole disease

among *Prunus* spp. such as peaches, plums, and other stone fruits, which can lead to significant production losses. The pathogen can be epiphytic on its host or be harbored in propagative plant tissues, and can thus be easily spread. This study developed a LAMP assay to detect *X. arboricola* pv. *pruni* based on a species-specific DNA sequence. The sensitivity and specificity of the LAMP method were

Table 3. *Xanthomonas arboricola* pv. *pruni* strains isolated from various regions in Korea used for the LAMP specificity tests

No.	Strain	Region	Peach varieties	Provided by	PCR ^a	LAMP
1	14-199	Gyeongbuk, Gimcheon	Fantazia	RDA	+ ^b	+
2	15-096	Gyeonggi, Icheon	Changhowon Hwangdo	RDA	+	+
3	15-101	Chungbuk, Eumseong	Kawanakajima Hakuto	RDA	+	+
4	15-106	Jeonbuk, Jeongeup	Madoka	RDA	+	+
5	16-143	Jeonbuk, Buan	Changhowon Hwangdo	RDA	+	+
6	16-153	Chungbuk, Chungju	Kawanakajima Hakuto	RDA	+	+
7	16-156	Jeonbuk, Muju	Yumyeong	RDA	+	+
8	16-244	Chungnam, Cheongyang	Sungold	RDA	+	+
9	17-178	Jeonbuk, Jeonju	Mihong	RDA	+	+
10	17-195	Jeonbuk, Imsil	Madoka	RDA	+	+
11	17-210	Gyeongbuk, Yeongcheon	Fantazia	RDA	+	+
12	17-213	Chungnam, Yeongi	Madoka	RDA	+	+
13	17-215	Gyeongbuk, Gyeongsan	Cheonghong	RDA	+	+

LAMP, loop-mediated isothermal amplification; RDA, Rural Development Administration.

^aPCR using Y17CoF and Y17CoR.

^b+, positive reaction.

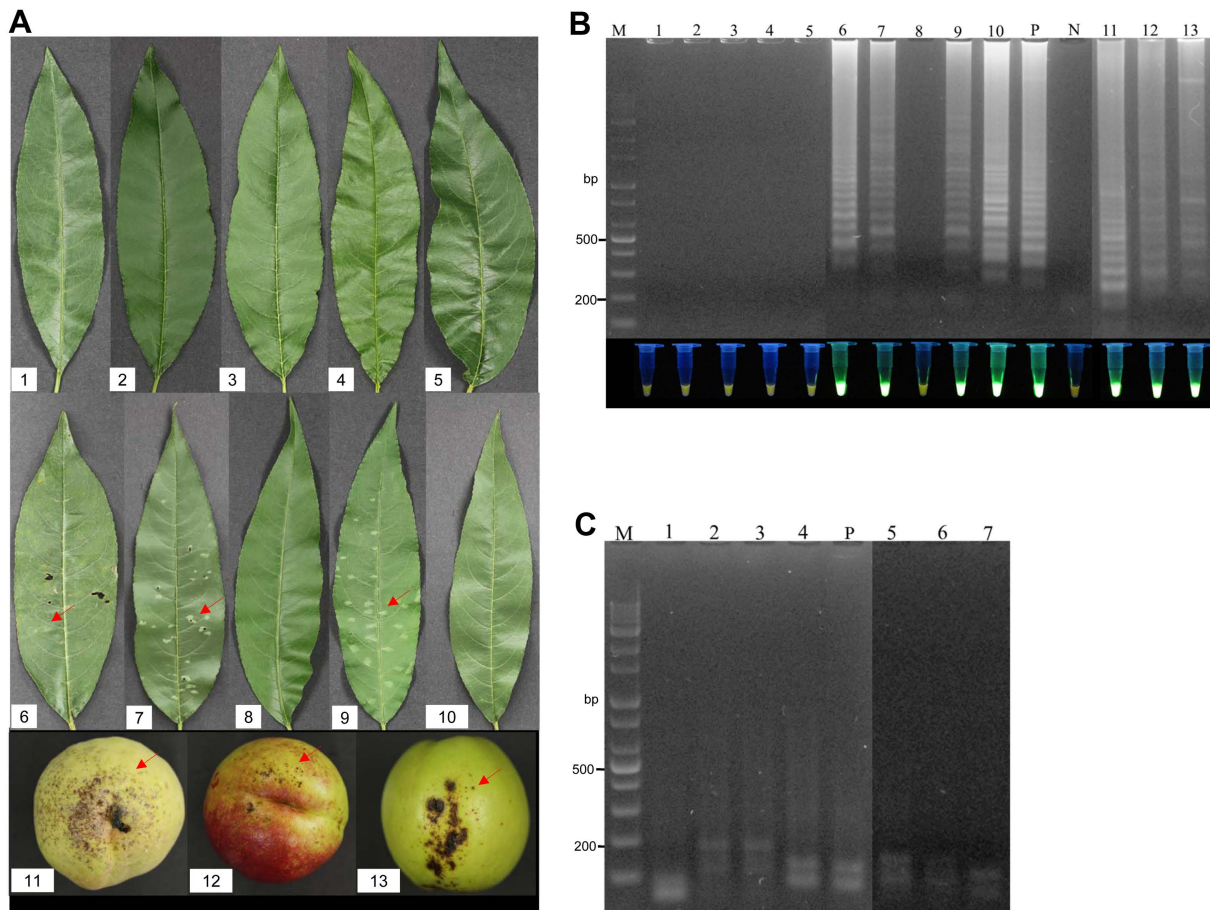


Fig. 5. Validation of the loop-mediated isothermal amplification (LAMP) assay using field samples. (A) Peach leaves and fruit samples collected from a peach orchard. Red arrows indicate the diseased areas. No. 1-10 indicate the following varieties of peach: Kanoiwa Hakuto, Changbangjosaeng, Baekmijosaeng, Cheonhong, DaehwaJosaeng, Daemyeong, Baekmijosaeng, Hakuho, Sulwooro 4-55, and Hikawa Hakuho, respectively; No. 11-13: peach fruit. (B) Electrophoresis analysis and visual analysis using a UV illuminator. M: 1 kb plus DNA ladder; P: positive control; N: negative control; Lanes 1-13 represent the LAMP results for samples No. 1-13, respectively. (C) Electrophoresis analysis of the LAMP products digested by *HaeIII*. P: positive control; Lanes 1-7 indicate the LAMP products digested by *HaeIII* from Daemyeong, Baekmijosaeng, Sulwooro 4-55, Hikawa Hakuho, and peach fruit 11-13, respectively.

tested using various *Xanthomonas* and non-*Xanthomonas* strains. In comparison with traditional PCR, the LAMP method proved to be more accurate. Two strains of *X. campestris* pv. *hyacinthi* and *Acidovorax facilis* generated positive results in the PCR test using the primers Y17CoF/Y17CoR, while only the *X. arboricola* pv. *pruni* strain Xap1 produced a positive reaction using the LAMP assay (Table 1). The success of the proposed LAMP method was illustrated by the testing of 13 *X. arboricola* pv. *pruni* strains isolated from various regions in Korea (Table 3). Consequently, it can be concluded that this LAMP method can specifically diagnose the presence of *X. arboricola* pv. *pruni*.

The LAMP assay were able to test crude plant tissue without pre-extraction, or heating incubation, and it does

not need advanced analysis equipment. It was successfully applied in field samples, the results were obtained by 45 min, with visual inspection, which supporting a high effective and easy processing method for plant quarantine.

In particular, the proposed LAMP assay achieved a high sensitivity and specificity 1.8 ng/ μ l of genomic DNA could be detected by the LAMP reaction (Fig. 4, lane 8), which was significantly higher than the traditional PCR method developed for identifying *X. arboricola* pv. *pruni* (Pagani, 2005). Leaves and fruits bearing the shot hole disease can be validate by the LAMP assay, particularly, the pathogen were successfully detected by using leaves without visible symptoms, which supporting the high sensitivity and accuracy of the proposed LAMP assay.

Relative methods for the identification of *X. arboricola*

pv. *pruni* were reported, these authors conducted a range of tests on plant tissues, such as almond, apricot, and plum, which involved with LAMP method (Bühlmann et al., 2013), Bio-PCR method (Ballard et al., 2011), real-time PCR (Palacio-Bielsa et al., 2011), evaluation of a real-time PCR and the LAMP method (Palacio-Bielsa et al., 2015), and so on. Although their detection method is well developed, their method did not apply in Korea strains. It was reported that *X. arboricola* pv. *pruni* shows some genetic diversity in different geographic regions, such as Italy, Spain and Australia collections (Barionovi and Scortichini, 2008), Korean and West Europe collections (Park et al., 2009), even low genetic diversity were observed in Japan strains (Kawaguchi, 2014). Here, we developed a new LAMP method to test crude plant tissue without DNA pre-extraction, and it was successfully detected the pathogen in diseased peach leaves and fruit in Korea. The LAMP method was test with many *X. arboricola* pv. *pruni* strains which isolated from various geographic regions in Korea (Table 3), and it was validated by 32 peach varieties (Table 2), the results revealed that the target sequence is specific to *X. arboricola* pv. *pruni* and it do not have homology with peach genome. In comparison, the LAMP method developed in this study was simple and convenient, it was effectively detected the specific presence of *X. arboricola* pv. *pruni* in peach orchards in Korea, this effective detection method may help in improving control strategies for shot hole disease in the future.

References

- Ausubel, F. M., Brent, R., Kingston, R. E., Moore, D. D., Seidman, J. G., Smith, J. A. and Struhl, K. 1992. *Current protocols in molecular biology*. Vol. 1. Greene Publishing Associates and Wiley Interscience, New York, NY.
- Ballard, E. L., Dietzgen, R. G., Sly, L. I., Gouk, C., Horlock, C. and Fegan, M. 2011. Development of a Bio-PCR protocol for the detection of *Xanthomonas arboricola* pv. *pruni*. *Plant Dis.* 95:1109-1115.
- Barionovi, D. and Scortichini, M. 2008. Integron variability in *Xanthomonas arboricola* pv. *juglandis* and *Xanthomonas arboricola* pv. *pruni* strains. *FEMS Microbiol. Lett.* 288:19-24.
- Bühlmann, A., Pothier, J. F., Tomlinson, J. A., Frey, J. E., Boonham, N., Smits, T. H. M. and Duffy, B. 2013. Genomics-informed design of loop-mediated isothermal amplification for detection of phytopathogenic *Xanthomonas arboricola* pv. *pruni* at the intraspecific level. *Plant Pathol.* 62:475-484.
- Garita-Cambrero, J., Palacio-Bielsa, A., López, M. M. and Cubero, J. 2017. Pan-genomic analysis permits differentiation of virulent and non-virulent strains of *Xanthomonas arboricola* that cohabit *Prunus* spp. and elucidate bacterial virulence factors. *Front. Microbiol.* 8:573.
- Goodman, C. A. and Hattingh, M. J. 1986. Transmission of *Xanthomonas campestris* pv. *pruni* in plum and apricot nursery trees by budding. *HortScience* 21:995-996.
- Hammerschlag, F. A. 2000. Resistant responses of peach somaculture 122-1 to *Xanthomonas campestris* pv. *pruni* and to *Pseudomonas syringae* pv. *syringae*. *HortScience* 35:141-143.
- Iwamoto, T., Sonobe, T. and Hayashi, K. 2003. Loop-mediated isothermal amplification for direct detection of *Mycobacterium tuberculosis* complex, *M. avium*, and *M. intracellulare* in sputum samples. *J. Clin. Microbiol.* 41:2616-2622.
- Kawaguchi, A. 2014. Genetic diversity of *Xanthomonas arboricola* pv. *pruni* strains in Japan revealed by DNA fingerprinting. *J. Gen. Plant Pathol.* 80:366-369.
- Lane, D. J. 1991. 16S/23S rRNA sequencing. In: *Nucleic acid techniques in bacterial systematics*, eds. by E. Stackebrandt and M. Goodfellow, pp. 115-175. Wiley, New York, USA.
- López-Soriano, P., Noguera, P., Gorris, M. T., Puchades, R., Maquieira, Á., Marco-Noales, E. and López, M. M. 2017. Lateral flow immunoassay for on-site detection of *Xanthomonas arboricola* pv. *pruni* in symptomatic field samples. *PLoS ONE* 12:e0176201.
- Notomi, T., Okayama, H., Masubuchi, H., Yonekawa, T., Watanabe, K., Amino, N. and Hase, T. 2000. Loop-mediated isothermal amplification of DNA. *Nucleic Acids Res.* 28:E63.
- Pagani, M. C. 2005. An ABC transporter protein and molecular diagnosis of *Xanthomonas arboricola* pv. *pruni* causing bacterial spot of stone fruits. Ph.D. thesis. North Carolina State University, Raleigh, NC, USA.
- Palacio-Bielsa, A., Cubero, J., Cambra, M. A., Collados, R., Berruete, I. M. and López, M. M. 2011. Development of an efficient real-time quantitative PCR protocol for detection of *Xanthomonas arboricola* pv. *pruni* in *Prunus* species. *Appl. Environ. Microbiol.* 77:89-97.
- Palacio-Bielsa, A., López-Soriano, P., Bühlmann, A., van Doorn, J., Pham, K., Cambra, M. A., Berruete, I. M., Pothier, J. F., Duffy, B., Olmos, A. and López, M. M. 2015. Evaluation of a real-time PCR and a loop-mediated isothermal amplification for detection of *Xanthomonas arboricola* pv. *pruni* in plant tissue samples. *J. Microbiol. Methods* 112:36-39.
- Park, S. Y., Lee, Y. S., Koh, Y. J., Hur, J.-S. and Jung, J. S. 2010. Detection of *Xanthomonas arboricola* pv. *pruni* by PCR using primers based on DNA sequences related to the *hrp* genes. *J. Microbiol.* 48:554-558.
- Park, S. Y., Lee, Y. S., Shin, J. S., Koh, Y. J. and Jung, J. S. 2009. Genetic diversity of *Xanthomonas arboricola* pv. *pruni* isolated in Korea. *J. Life Sci.* 19:684-687.
- Pothier, J. F., Pagani, M. C., Pelludat, C., Ritchie, D. F. and Duffy, B. 2011. A duplex-PCR method for species- and pathovar-level identification and detection of the quarantine plant pathogen *Xanthomonas arboricola* pv. *pruni*. *J. Microbiol. Methods* 86:16-24.
- Ritchie, D. F. 1995. Bacterial spot. In: *Compendium of stone fruit*

- diseases*, eds. by J. M. Ogawa, E. I. Zehr, G. W. Bird, D. F. Ritchie, K. Uriu and J. K. Uyemoto, pp. 50-52. APS Press, St. Paul, MN, USA.
- Ritchie, D. F. 1999. Sprays for control of bacterial spot of peach cultivars having different levels of disease susceptibility, 1998. *Fungic. Nematic. Tests* 54:63-64.
- Snaird, J., Amann, R., Huber, I., Ludwig, W. and Schleifer, K. H. 1997. Phylogenetic analysis and in situ identification of bacteria in activated sludge. *Appl. Environ. Microbiol.* 63:2884-2896.
- Tan, L., Rong, W., Lou, H., Chen, Y. and He, C. 2014. The *Xanthomonas campestris* effector protein XopDXcc8004 triggers plant disease tolerance by targeting DELLA proteins. *New Phytol.* 204:595-608.
- Vauterin, L., Hoste, B., Kersters, K. and Swings, J. 1995. Reclassification of *Xanthomonas*. *Int. J. Syst. Evol. Bacteriol.* 45:472-489.
- Yoon, S. H., Ha, S. M., Kwon, S., Lim, J., Kim, Y., Seo, H. and Chun, J. 2017. Introducing EzBioCloud: a taxonomically united database of 16S rRNA and whole genome assemblies. *Int. J. Syst. Evol. Microbiol.* 67:1613-1617.
- Zaccardelli, M., Malaguti, S. and Bazzi, C. 1998. Biological and epidemiological aspects of *Xanthomonas arboricola* pv. *pruni* on peach in Italy. *J. Plant Pathol.* 80:125-132.