

RESEARCH

Open Access



# Evaluation of the efficacy of prophylactic extended field irradiation in the concomitant chemoradiotherapy treatment of locally advanced cervical cancer, stage IIIB in the 2018 FIGO classification

Qingyu Meng<sup>†</sup>, Xiaoliang Liu<sup>†</sup>, Weiping Wang, Xiaorong Hou, Xin Lian, Shuai Sun, Junfang Yan, Zhikai Liu, Zheng Miao, Fuquan Zhang\* and Ke Hu\*

## Abstract

**Background:** The new staging system of cervical cancer issued in 2018 by the International Federation of Gynecology and Obstetrics (FIGO), calls for a new evaluation of the efficacy of prophylactic extended field irradiation (EFI) in the concomitant chemoradiotherapy/brachytherapy treatment of locally advanced cervical cancer patients (stage IIIB).

**Methods:** We performed a retrospective study consisting of 133 FIGO IIIB cervical cancer patients treated in the Peking Union Medical College Hospital from 2002 to 2010. The patients were distributed in two groups depending whether they were treated with EFI or pelvic only irradiation. The therapeutic efficacy, toxicity and prognostic factors of EFI were evaluated in the frame of the new FIGO staging system.

**Results:** When compared to patients who received pelvic only irradiation, patients who received prophylactic EFI showed significantly less distant metastasis and a significant improvement in their 5 years overall survival (OS), disease free survival (DFS), out of field recurrence free survival (OFRFS) and para-aortic lymph node metastasis free survival (PALNMFS). Multivariate analysis revealed that EFI is an independent prognosis factor for DFS, OFRFS and PALNMFS. Finally, although more acute complications were observed in the EFI group, there is no significantly worst acute toxicity in the EFI group.

**Conclusion:** Our retrospective analysis supports the prophylactic effect of EFI in the concomitant chemoradiotherapy treatment of IIIB patients and suggests that this prophylactic effect is associated with a clear improvement in 5-years OS, DFS, OFRFS and PALNMFS. Consequently, EFI appears to be a very valid treatment option for FIGO IIIB cervical cancer patients.

**Keywords:** FIGO IIIB cervical cancer, Extended field irradiation, Concomitant chemoradiotherapy, Acute toxicity

\* Correspondence: [zhangfuquan3@sina.com](mailto:zhangfuquan3@sina.com); [huke8000@163.com](mailto:huke8000@163.com)

<sup>†</sup>Qingyu Meng and Xiaoliang Liu contributed equally to this work.

Department of radiation oncology, Peking Union Medical College Hospital, Chinese Academy of Medical Sciences and Peking Union Medical College, Beijing, People's Republic of China



## Background

With about 570,000 new cases per year worldwide, cervical cancer is the fourth most frequent female cancer and causes about 300,000 deaths every year [1–3]. Cervical cancer usually progresses by steps, starting from regional pelvic lymph nodes followed by para-aortic lymph nodes (PALN) and finally by distant metastases with the predominance of PALN metastases [4, 5]. Recent advances in imaging technology together with the development of minimally invasive surgery contributed to the concerted efforts to decrease the mortality of cervical cancer and redefined the case management paradigm. Consequently, in 2018, the FIGO Gynecologic Oncology Committee has modified the cervical cancer staging system [6]. One of the main alterations is the classification of the stages IIIB and IIIC. The previous classification system does not explicitly consider lymph node metastasis [7]. In the new classification issued in 2018, the stage IIIB is characterized by the progression to the pelvic wall and/or hydronephrosis or nonfunctioning kidney without lymph node metastasis. Pelvic and/or abdominal aortic lymph node metastases are now promoted to stage IIIC.

Pelvic wall involvement is associated with an increased rate of retroperitoneal lymph node metastasis [8–10], which advocates for the use of prophylactic extended field exposure in the chemoradiotherapy treatment of IIIB patients. However, the new guidelines do not provide any specific direction concerning the need for prophylactic extended field exposure for IIIB patients. Prophylactic extended field irradiation (EFI) is commonly used for the treatment of occult PALN metastases in patients with advanced cervical cancer (former IIIB, now IIIC) [5, 11–13]. So far, reports on the efficiency of EFI are contradictory and do not provide clear guidance on the usage of EFI. For example, Rotman et al., have shown that EFI has no effect on locoregional tumor control, but is associated with an increased overall survival (OS) rate [11]. Whereas Haie et al. found that EFI had no effect on locoregional control or survival, but did lower the occurrence of PALN and remote metastases without pelvic failure [12].

These studies were done in the frame of the previous IIIB staging classification. In the light of the new classification, we performed a retrospective study to analyze therapeutic efficacy, treatment failure, toxicity and prognostic factors of EFI for 133 FIGO IIIB cervical cancer patients treated by concomitant chemoradiotherapy in the Peking Union Medical College Hospital (PUMCH) from 2002 to 2010. We are able to show the efficacy of EFI in patients with locally advanced cervical cancer stage IIIB without PAN involvement.

## Methods

### Patient characteristics

In total, 133 FIGO IIIB cervical cancer patients were retrospectively reviewed in this study. The age of the

patients ranged from 33 to 88 years old, with a median age of 50 years old. The clinical condition was determined by clinical checkup combined with biopsy analysis before the first treatment. Locally advanced cervical cancer was defined according to International Federation of Gynecology and Obstetrics (FIGO) staging as IIIB [6]. The patients were retrospectively assigned to two groups depending on whether or not they received prophylactic extended field irradiation. Patients' details are summarized in Table 1.

### Radiation therapy

All patients were scheduled to receive external beam radiation therapy and intracavity brachytherapy. The radiation therapies were administered as described elsewhere [14].

In our institution, patients who satisfied the following criteria received prophylactic extended field irradiation:

- (1) No para-aortic LN metastasis (as monitored by CT, MRI or PET/CT)
- (2) No evidence of distant metastasis;
- (3) Pelvic wall involvement on both sides;
- (4) ECOG score ranging from 0 to 2 points;
- (5) Before treatment, levels of NEUT  $\geq 1.5 \times 10^9 \cdot L^{-1}$ , HGB  $\geq 80 \text{ g} \cdot L^{-1}$ , platelet  $\geq 100 \times 10^9 \cdot L^{-1}$ , serum creatinine  $< 1.5 \text{ mg} \cdot dL^{-1}$ . AST and ALT are within 2 times of the upper limit of normality;

Exclusion criteria:

- (1) Displays iliac lymph node metastasis;
- (2) Have already undergone surgery for cervical cancer (including pelvic or retroperitoneal lymph node resection but excluding tumor biopsy), radiotherapy or chemotherapy;
- (3) Has a history of malignant tumors;
- (4) Already underwent abdominal or pelvic radiotherapy;
- (5) Women during pregnancy or lactation;
- (6) Present an active inflammatory bowel disease, or has a history of severe stomach and duodenal ulcer;
- (7) Present an active infection, fever;
- (8) Suffer from a serious disease such as unstable heart disease, kidney disease, chronic hepatitis, poorly controlled diabetes, and mental illness.

For the patients who received prophylactic extended field irradiation (forming the EFI group), the CTV covered the para-aortic lymph node regions additionally to the CTV of pelvic radiotherapy. Para-aortic regions encompassed the area adjacent to the aorta and inferior vena cava, with a lower border of the aortic bifurcation. The upper border of the extended field was usually at T12 or the renal vessel.

### Concurrent chemotherapy

Ninety-four patients received more than 4 cycles of concurrent chemotherapy, 39 patients were treated with less

**Table 1** General patients' information

Character	Group definition	Total	EFI	Pelvis Only	P value
Age	≥65	17	2	15	0.001
	< 65	116	65	51	
Pathology type	Squamous	122	63	59	0.332
	Adenocarcinoma, Adeno/squamous Carcinoma	11	4	7	
Tumor size	4 cm	33	18	15	0.581
	≤ 4 cm	100	49	51	
HGB prior treatment	< 110 g/L	36	22	14	0.144
	≥ 110 g/L	94	44	50	
Concurrent chemotherapy	≥ 4 cycles	94	50	44	0.313
	< 4 cycles	39	17	22	
SCC-Ag	< 10	55	31	24	0.657
	≥ 10	65	34	31	
EQD2 (point A)	< 90Gy	16	4	12	0.091
	90–98 Gy	32	18	14	
	≥ 98Gy	85	45	40	
Therapy duration	≤ 63 days	111	55	56	0.669
	> 63 days	22	12	10	

than 4 cycles. Out of these 39 patients, 17 patients didn't receive any chemotherapy for personal reasons. Patients diagnosed as squamous were treated with a weekly cisplatin-based regimen at a dose of 40 mg/m<sup>2</sup>/week for 4 to 6 weeks. The adenocarcinoma patient received an additional PF regimen that consisted of cisplatin 70 mg/m<sup>2</sup> on day 1 and fluorouracil 1000 mg/m<sup>2</sup> from day 1 to day 4. The PF regimen was administered every 3 weeks for a total of 1–2 cycles. At the end of the treatment, the outcome was assessed following the guidelines proposed previously [15].

#### Toxicity and adverse effect assessment

All patients were examined for toxicities and adverse effects every week during the treatment. The severity of acute complications was classified following the Common Terminology Criteria for Adverse Events (CTCAE v4.0) ([https://ctep.cancer.gov/protocolDevelopment/electronic\\_applications/docs/ctcv20\\_4-30-992.pdf](https://ctep.cancer.gov/protocolDevelopment/electronic_applications/docs/ctcv20_4-30-992.pdf)). Late complications were graded following the RTOG/EORTC 1987 toxicity scales [16].

#### Follow-up

Patients had a review check-up every 3 months during the first 2 years after the final treatment, and twice a year during the third to fifth year after treatment, and once a year starting from the fifth year after the last treatment. The review check-up includes blood biochemistry, SCC Ag, gynecological examination, pelvic MRI, chest and abdomen enhanced CT. The last follow

up for the current study was carried out in November 2017.

#### Statistics analysis

Overall survival (OS) is defined as the time from the start of treatment to the date of death or to the date of censoring. Disease-free survival (DFS) is defined as the time interval between the start of treatment and the detection of recurrence, metastasis or death. Local control rate (LCR) is defined as the percentage of the arrest of cancer growth at the site of origin. Out-of-field recurrence free survival (OFRFS) is defined as the beginning of radiotherapy to the detection of out of field recurrence or out of field recurrence related death. PALN metastasis free survival (PALNMFS) is defined as the beginning of radiotherapy to the detection of PALN metastasis or PALN metastasis related death. OS, DFS, LCR, OFRFS and PALNMFS were calculated with the Kaplan-Meier method by using SPSS 17.0 statistical software and compared using the log-rank test. Log-rank method was also used to perform univariate analysis, when the factor was found significant ( $P < 0.05$ ), the Cox regression model was used to run multivariate analysis.  $P$  value  $< 0.05$  was considered statistically significant.

## Results

#### Patient characteristics

The characteristics of the 133 patients are summarized in Table 1. The vast majority of the patients had squamous cell carcinomas (122 patients, 92%). 66 patients received pelvis only field irradiation, forming the pelvis

only control group and 67 patients received prophylactic extended field irradiation and form the EFI test group. The only significant difference between the two groups is the distribution of patients around the 65-year-old threshold: 2 patients are older than 65 in the EFI group against 15 in the pelvis only group.

#### Treatment outcome evaluation

After treatment, we observed 19 cases of local recurrence with no significant difference between the EFI (8 cases) and Pelvis only group (11 cases), 27 patients with out-of-field recurrence including 6 patients with PALN metastasis (Additional file 1: Table S1). Interestingly, there are significantly less patients with out-of-field recurrence in the EFI group (7 patients) than in the Pelvis only group (20 patients) ( $p = 0,004$ ). In particular, no metastasis of the retroperitoneal lymph node was observed in the EFI group against 6 for the pelvic only group ( $p = 0,011$ ), confirming the prophylactic efficiency of EFI.

The 5-year OS, DFS, LCR, OFRFS were 73.3, 68.9, 85.5 and 81.6% (Additional file 3: Figure S1A-D), suggesting the standard concurrent chemoradiotherapy is indeed very effective for FIGO IIIB cervical cancer patients classified following the new staging parameters.

When comparing the 5 years OS, DFS, LCR, OFRFS and PALNMFS between the EFI and pelvis only groups (Fig. 1a-e), significant differences are seen in the OS, DFS, OFRFS and PALNMFS. The OS has dramatically improved from 66.3% for the pelvic only group to 80.3% for the EFI group ( $p = 0,013$ ). The DFS from 57,2 to 80,4 ( $p = 0,002$ ). The OFRFS rose from 71,9% for the pelvic only group to 90,8% for the EFI group ( $p = 0,003$ ) and the PALNMFS rose from 90,8 to 100% ( $p = 0.006$ ). However, there is not significant difference in the 5 years LCR between the two groups (Fig. 1c). Taken together, these data suggest that EFI indeed carries a prophylactic effect for IIIB patients (no retroperitoneal lymph node metastasis observed in the EFI group against 6 in the pelvic only group) and that this prophylactic effect is associated with a clear improvement in OS, DFS and OFRFS.

#### Treatment toxicity

We also have carefully evaluated the acute and delayed toxicity associated with the treatment (Table 2).

Only a few cases of delayed toxicity were observed and no significant difference was observed between the two groups for delayed toxicity.

However, significant differences in acute toxicity were observed between the two groups. Compared to the Pelvic only group, the EFI group contained significantly more patients suffering from low counts of leukocyte, neutrophils and low level of hemoglobin.

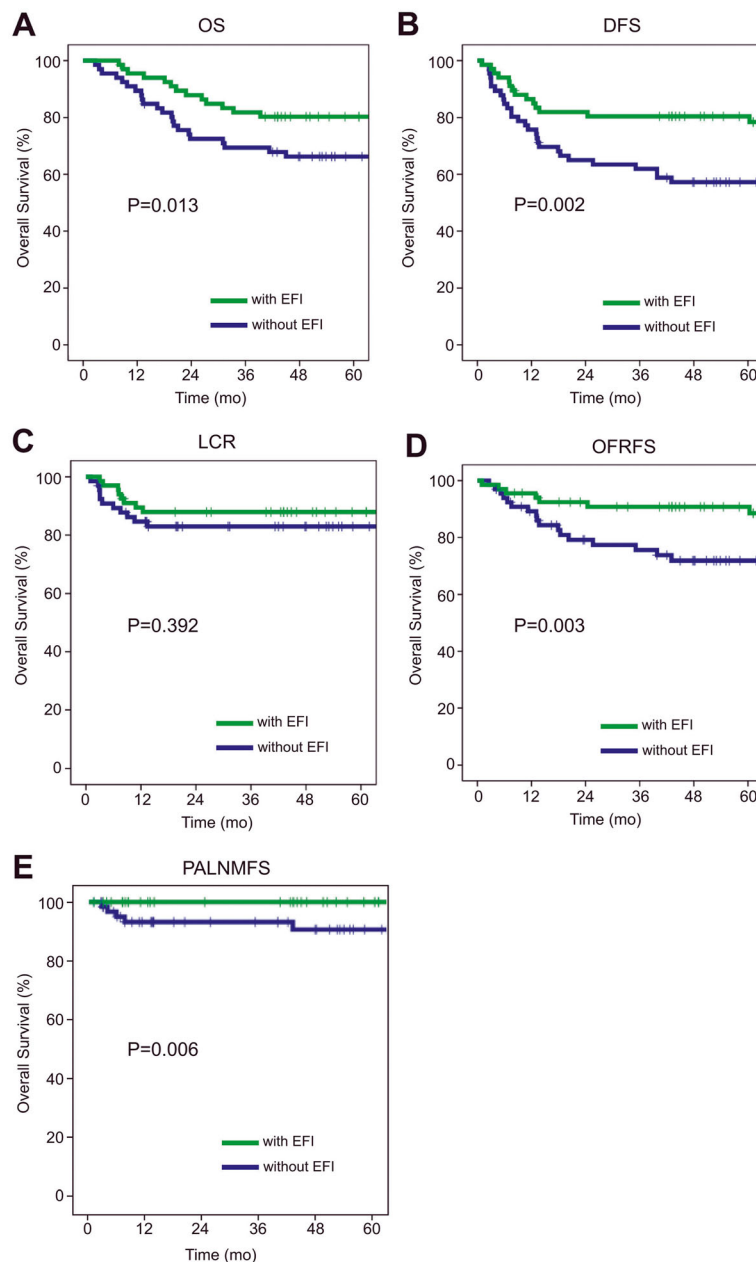
#### Prognostic factors analysis

In order to identify FIGO IIIB cervical cancer prognosis factors, the 133 patients were distributed according to the difference in their treatment (Additional file 2: Table S2). A univariate analysis was performed in order to identify the prognostic factors for OS, DFS, LCR, OFRFS and PALNMFS. Prognostic factors found to be significant ( $P < 0.05$ ) by univariate analysis were then further analyzed using multivariate analysis (Table 3). Our results suggested that age, tumor size and EQD2 were independent prognostic factors for OS; age, EQD2 and EFI were independent prognostic factors for DFS; the independent prognostic factors for LCR included tumor size, age and EQD2; concurrent chemotherapy cycles and EFI were independent prognostic factors for OFRFS and EFI was independent prognostic factor for PALNMFS.

#### Discussion

Concurrent chemoradiotherapy (CCRT) remains the principal treatment option for patients with locally advanced cervical cancer [17–20]. Locally advanced carcinoma is often associated with occult para-aortic metastases [12, 21–28], which advocates for the use of the prophylactic extended field irradiation (EFI) rather than pelvic only irradiation. However, since its implementation, reports on the efficacy of prophylactic EFI in CCRT have been contradictory. Rotman et al. report an improved overall 10 years survival for the patients who received EFI but didn't observe any difference in disease free survival [11]. Meng et al. observed a significant improvement in disease free survival for patients treated with EFI as well as a trend towards higher OS and DMFS [29]. On the other hand, Haie et al. observed that EFI only reduced the rates of PALN and distant metastases without affecting survival [12]. Additionally, EFI seems to be associated with elevated toxicity and higher risks of side effects. Haie et al. reported an increase in severe digestive complications for patients treated with EFI [12] while Rotman et al reported a higher cumulative incidence of grade 4 and 5 toxicities at 10 years for patients who received EFI as well as a higher (although not significant) death rate due to radiotherapy complications [11].

In the new classification issued in 2018, the stage IIIB is characterized by the extension to the pelvic wall and/or hydronephrosis or nonfunctioning kidney. Since pelvic wall involvement correlates with the increase of the rate of retroperitoneal lymph node metastasis [8–10], the efficiency of prophylactic EFI becomes particularly relevant. However, the new guidelines do not provide any specific direction concerning the use of prophylactic EFI for IIIB patients. This lack of direction calls for a reconsideration of the effects of EFI in the CCRT treatment of locally advanced cervical cancer (FIGO IIIB).



**Fig. 1** Comparison of the OS, DFS, LC, OFRFS and PLANMFS between the EFI and Pelvic only groups (green and blue traces respectively)

Indeed, since the release of the new classification, the effects and toxicity of EFI on FIGO IIIB cervical cancer patients have not been examined.

In this study we present a retrospective analysis of the therapeutic efficacy, treatment failure, toxicity and prognostic factors of EFI for 133 FIGO IIIB cervical cancer patients treated by concomitant chemoradiotherapy in the Peking Union Medical College Hospital (PUMCH) from 2002 to 2010.

Interestingly, when compared to patients who received pelvic only irradiation (66 cases), patients who received

prophylactic extended field irradiation (67 patients) showed significantly less out-of-field metastases and no retroperitoneal lymph node metastasis at all. In addition patients treated with EFI exhibited clear improvement in their 5 years OS, DFS, OFRFS and PALNMFS (Fig. 1). However, no significant difference was found for the 5 years LCR. Along this line, the multivariate analysis revealed that EFI is an independent prognosis factor for DFS and DMFS.

As already mentioned, toxicity is an important concern for patients treated with EFI. Our study showed that



**Table 2** Acute and delayed toxicity after treatment

Grade	EFI				Pelvis only				P value
	II	III	IV	Total	II	III	IV	Total	
<i>Acute toxicity (CTCEA 2.0)</i>									
Leukocytes	18	35	4	57	18	23	0	41	0,003
Neutrophils	28	16	2	46	16	10	3	29	0,004
Platelets	17	8	0	25	11	6	0	17	0,152
Lymphopenia	2	61	0	63	23	39	0	62	0,982
Hemoglobin	31	16	3	50	30	4	2	36	0,015
Frequent urination	28	2	0	30	28	2	0	30	0,461
Diarrhea	12	7	0	19	18	4	0	22	0,332
<i>Delayed toxicity (RTOG/EORTC1987)</i>									
Urinary system	5	3	0	8	3	1	0	4	0,190
Lower digestive tract	6	1	0	7	4	1	0	5	0,392

patients experiencing EFI are more likely to suffer from blood toxicities (leukocyte, neutrophils and hemoglobin). However, no significant differences were observed between the two groups in terms of delayed toxicity.

Alongside treatment toxicity, lumbar vertebral compression fractures after radiotherapy are often reported in the literature [13]. However, in our study, no case of lumbar vertebral compression fracture caused by radiotherapy has been observed. This may be due to the fact that we used conformal or intensity-modulated radiotherapy techniques. It is well known that intensity-modulated radiation therapy has an excellent dose distribution and conformability. Additionally, the feasibility of each treatment plan was carefully evaluated, ensuring

**Table 3** Multivariate analysis for prognostic factors

Subject	HR	CI 95%	P value
<i>OS</i>			
Age	0.331	0.160–0.683	0.003
Tumor size	0.262	0.098–0.699	0.007
EQD2(point A)	2.530	1.159–5.521	0.036
<i>DFS</i>			
Age	0.462	0.232–0.920	0.028
EFI	1.927	1.000–3.714	0.050
EQD2(point A)	2.949	1.379–6.306	0.005
<i>LCR</i>			
Tumor size	0.091	0.011–0.745	0.026
Age	0.266	0.084–0.843	0.024
EQD2(point A)	5.578	1.795–17.332	0.003
<i>OFRFS</i>			
Concurrent chemotherapy	2.738	1.248–6.009	0.012
EFI	3.287	1.369–7.892	0.008

that the dose is evenly distributed and avoiding any hot-spots falling on important radioactive-sensitive organs.

Finally, patient’s quality of life (QOL) is also an important criterion to assess a treatment. Unfortunately, due to the retrospective nature of the study no quantitative measurement of the patient’s QOL is available. However, the trend was that no noticeable difference in patient’s QOL was observed between the two groups.

All together, our retrospective analysis supports the prophylactic effect of EFI in the chemoradiotherapy treatment of IIIB patients and seems to suggest that this prophylactic effect is associated with a clear improvement in OS, DFS OFRFS and PALNMFS. Consequently, EFI appears to be a very effective treatment option for IIIB cervical cancer patients in the new FIGO classification. Interestingly, our results differ from our analysis based on the previous staging standards [29], which demonstrates the importance of reevaluating the effects of EFI in the frame of the new FIGO classification.

Unavoidably, our study conveys limitations. First, this is a single-center study with a limited number of patients. In a multi-center study with a larger sample size, some trends we observed could be confirmed. Additionally, the discrepancy that EFI is associated with higher 5 years OS but doesn’t not appeared to be a prognosis factor for OS could also be solved with a larger sample size. Second, this is a retrospective study. As a consequence, patients were not perfectly matched in the two groups. More studies will need to be conducted in order to reach a consensual view on the effect of EFI for the new FIGO stage IIIB cervical cancer patients.

**Conclusion**

Our retrospective study supports the prophylactic effect of EFI in the chemoradiotherapy treatment of IIIB patients and that this prophylactic effect is associated with a clear improvement in 5-years OS, DFS, OFRFS and PALNMFS. We anticipate that our observations will help guiding the use of prophylactic EFI in the treatment of stage IIIB cervical cancer patients.

**Supplementary information**

Supplementary information accompanies this paper at <https://doi.org/10.1186/s13014-019-1431-9>.

**Additional file 1: Table S1.** Details for treatment failure patterns.

**Additional file 2: Table S2.** Univariate analysis for prognostic factors.

**Additional file 3: Figure S1.** OS, DFS, LC and OFRFS of the complete patient’s cohort.

**Abbreviations**

CCRT: Concomitant chemoradiotherapy; CT: Computer tomography; CTV: Clinical tumor volume; DFS: Disease free survival; DMFS: Distant metastasis free survival; EFI: Extended field irradiation; EORTC: European Organization for Research and Treatment of Cancer; EQD: Equivalent dose; FIGO: Federation of gynecology and obstetrics; LCR: Local control rate;

LN: Lymph node; OFRFs: Out-of-field recurrence free survival; OS: Overall survival; PALN: Para aortic lymph node; PALMFS: PALN metastasis free survival; PET: Positron emission tomography; RTOG: Radiation Therapy Oncology Group; SCC-Ag: Squamous cell carcinoma antigen

#### Acknowledgments

We thank all the patients who participated in this study for sharing their information during the follow-up period. We are also very grateful to all the members of our department for helpful discussions. For funding, we thank the Ministry of Science and Technology of the People's Republic of China (grant number 2016YFC0105207).

#### Authors' contributions

QM designed the study, collected and organized the data, wrote the manuscript. XL, WW, XH, XL, SS, JY, ZL, ZM collected and organized the data. FZ, KH designed the study, wrote & reviewed the manuscript. All authors read and approved the final manuscript.

#### Funding

This work was supported by the Ministry of Science and Technology of the People's Republic of China (grant number 2016YFC0105207). The funding body was not involved in the study design, data collection, analysis, and interpretation, decision to publish, and preparation of the manuscript.

#### Availability of data and materials

The datasets used and/or analyzed for the present study are available from the corresponding author on reasonable request.

#### Ethics approval and consent to participate

All volunteers received information concerning their participation in the study and gave written informed consent.

#### Consent for publication

Not applicable.

#### Competing interests

The authors declare that they have no competing interests.

Received: 30 September 2019 Accepted: 26 November 2019

Published online: 16 December 2019

#### References

- Bhatla N, Aoki D, Sharma DN, Sankaranarayanan R. Cancer of the cervix uteri. Bhatla N, Denny L, editors. *Int J Gynaecol Obstet*. 7 ed. John Wiley & Sons, Ltd; 2018;143 Suppl 2:22–36.
- Bhatla N, Berek JS, Cuello Fredes M, Denny LA, Grenman S, Karunarathne K, et al. Revised FIGO staging for carcinoma of the cervix uteri. *Int J Gynaecol Obstet*. 2019;145:129–35.
- Ferlay J, Soerjomataram I, Dikshit R, Eser S, Mathers C, Rebelo M, et al. Cancer incidence and mortality worldwide: sources, methods and major patterns in GLOBOCAN 2012. *Int. J. Cancer*. John Wiley & Sons, Ltd; 2015; 136:E359–E386.
- Berman ML, Keys H, Creasman W, DiSaia P, Bundy B, Blessing J. Survival and patterns of recurrence in cervical cancer metastatic to periaortic lymph nodes (a gynecologic oncology group study). *Gynecol Oncol*. 1984;19:8–16.
- Ring KL, Young JL, Dunlap NE, Andersen WA, Schneider BF. Extended-field radiation therapy with whole pelvis radiotherapy and cisplatin chemosensitization in the treatment of IB2-IIIb cervical carcinoma: a retrospective review. *Am J Obstet Gynecol*. 2009;201:109.e1–6.
- Bhatla N, Aoki D, Sharma DN, Sankaranarayanan R. Cancer of the cervix uteri. Bhatla N, Denny L, editors. *Int J Gynaecol Obstet*. 7 ed. 2018;143 Suppl 2:22–36.
- Pecorelli S. Revised FIGO staging for carcinoma of the vulva, cervix, and endometrium. *Int J Gynaecol Obstet*. 2009;105:103–4.
- Thamrongnantasakul K, Supakalin N, Kietpeerakool C, Pattanittum P, Lumbiganon P. Extended-field radiotherapy for locally advanced cervical cancer. *Cochrane Gynaecological, Neuro-oncology and Orphan Cancer Group*, editor. *Cochrane Database Syst Rev*. John Wiley & Sons, Ltd; 2018;10: CD012301.
- Smits RM, Zusterzeel PLM, Bekkers RLM. Pretreatment retroperitoneal para-aortic lymph node staging in advanced cervical cancer: a review. *Int J Gynecol Cancer*. 2014;24:973–83.
- Cheng-Yen Lai J, Lai K-J, Yi-Yung Yu E, Hung S-T, Chu C-Y, Wang K-L. Sentinel lymphatic mapping among women with early-stage cervical cancer: a systematic review. *Taiwan J Obstet Gynecol*. 2018;57:636–43.
- Rotman M, Pajak TF, Choi K, Clery M, Marcial V, Grigsby PW, et al. Prophylactic extended-field irradiation of Para-aortic lymph nodes in stages IIB and bulky IB and IIA cervical carcinomas. Ten-year treatment results of RTOG 79-20. *JAMA*. 1995;274:387–93.
- Haie C, Pejovic MH, Gerbault A, Horiot JC, Pourquier H, Delouche J, et al. Is prophylactic Para-aortic irradiation worthwhile in the treatment of advanced cervical carcinoma? Results of a controlled clinical trial of the EORTC radiotherapy group. *Radiother Oncol*. 1988;11:101–12.
- Chatani M, Matayoshi Y, Masaki N, Narumi Y, Teshima T, Inoue T. Prophylactic irradiation of Para-aortic lymph nodes in carcinoma of the uterine cervix. A prospective randomized study. *Strahlenther Onkol*. 1995; 171:655–60.
- Wang W, Liu X, Meng Q, Zhang F, Hu K. Prophylactic extended-field irradiation for patients with cervical Cancer treated with concurrent Chemoradiotherapy: a propensity-score matching analysis. *Int J Gynecol Cancer*. 2018;28:1584–91.
- Therasse P, Arbuck SG, Eisenhauer EA, Wanders J, Kaplan RS, Rubinstein L, et al. New guidelines to evaluate the response to treatment in solid tumors. European Organization for Research and Treatment of Cancer, National Cancer Institute of the United States, National Cancer Institute of Canada. *J Natl Cancer Inst*. 2000;92:205–16.
- Herrmann T, Knorr A, Dörner K. The RTOG/EORTC classification criteria for early and late radiation reactions. *Radiobiol Radiother (Berl)*. 1987;28: 519–28.
- Morris M, Eifel PJ, Lu J, Grigsby PW, Levenback C, Stevens RE, et al. Pelvic radiation with concurrent chemotherapy compared with pelvic and para-aortic radiation for high-risk cervical cancer. *N Engl J Med*. 1999;340:1137–43.
- Peters WA, Liu PY, Barrett RJ, Stock RJ, Monk BJ, Berek JS, et al. Concurrent chemotherapy and pelvic radiation therapy compared with pelvic radiation therapy alone as adjuvant therapy after radical surgery in high-risk early-stage cancer of the cervix. *J Clin Oncol*. 2000;18:1606–13.
- Keys HM, Bundy BN, Stehman FB, Muderspach LI, Chafe WE, Suggs CL, et al. Cisplatin, radiation, and adjuvant hysterectomy compared with radiation and adjuvant hysterectomy for bulky stage IB cervical carcinoma. *N Engl J Med*. 1999;340:1154–61.
- Rose PG, Bundy BN, Watkins EB, Thigpen JT, Deppe G, Maiman MA, et al. Concurrent cisplatin-based radiotherapy and chemotherapy for locally advanced cervical cancer. *N Engl J Med*. 1999;340:1144–53.
- Green JA, Kirwan JM, Tierney JF, Symonds P, Fresco L, Collingwood M, et al. Survival and recurrence after concomitant chemotherapy and radiotherapy for cancer of the uterine cervix: a systematic review and meta-analysis. *Lancet*. 2001;358:781–6.
- Cunningham MJ, Dunton CJ, Corn B, Noumoff J, Morgan MA, King SA, et al. Extended-field radiation therapy in early-stage cervical carcinoma: survival and complications. *Gynecol Oncol*. 1991;43:51–4.
- Ballon SC, Berman ML, Lagasse LD, Petrilli ES, Castaldo TW. Survival after extraperitoneal pelvic and paraaortic lymphadenectomy and radiation therapy in cervical carcinoma. *Obstet Gynecol*. 1981;57:90–5.
- Piver MS, Barlow JJ, Krishnamsetty R. Five-year survival (with no evidence of disease) in patients with biopsy-confirmed aortic node metastasis from cervical carcinoma. *Am J Obstet Gynecol*. 1981;139:575–8.
- Wharton JT, Jones HW, Day TG, Rutledge FN, Fletcher GH. Preirradiation celiotomy and extended field irradiation for invasive carcinoma of the cervix. *Obstet Gynecol*. 1977;49:333–8.
- Jampolis S, Andras EJ, Fletcher GH. Analysis of sites and causes of failures of irradiation in invasive squamous cell carcinoma of the intact uterine cervix. *Radiology*. 1975;115:681–5.
- Nelson JH, Boyce J, Macasaet M, Lu T, Bohorquez JF, Nicastri AD, et al. Incidence, significance, and follow-up of para-aortic lymph node metastases in late invasive carcinoma of the cervix. *Am J Obstet Gynecol*. 1977;128: 336–40.
- Delgado G, Chun B, Caglar H, Bepko F. Paraaortic lymphadenectomy in gynecologic malignancies confined to the pelvis. *Obstet Gynecol*. 1977;50: 418–23.

29. Meng Q, Wang W, Liu X, Hou X, Lian X, Sun S, et al. Escalated radiation and prophylactic extended field nodal irradiation are beneficial for FIGO IIIB cervical cancer patients' prognosis. *Radiat Oncol.* 2018;13:223.

### **Publisher's Note**

Springer Nature remains neutral with regard to jurisdictional claims in published maps and institutional affiliations.

**Ready to submit your research? Choose BMC and benefit from:**

- fast, convenient online submission
- thorough peer review by experienced researchers in your field
- rapid publication on acceptance
- support for research data, including large and complex data types
- gold Open Access which fosters wider collaboration and increased citations
- maximum visibility for your research: over 100M website views per year

**At BMC, research is always in progress.**

Learn more [biomedcentral.com/submissions](https://biomedcentral.com/submissions)

