

# Mechanisms of Incorporation for D-Amino Acid Probes That Target Peptidoglycan Biosynthesis

Erkin Kuru,<sup>†</sup> Atanas Radkov,<sup>‡</sup> Xin Meng,<sup>§</sup> Alexander Egan,<sup>||</sup> Laura Alvarez,<sup>⊥</sup> Amanda Dowson,<sup>#</sup> Garrett Booher,<sup>◆</sup> Eefjan Breukink,<sup>○</sup> David I. Roper,<sup>#</sup> Felipe Cava,<sup>⊥</sup> Waldemar Vollmer,<sup>||</sup> Yves Brun,<sup>\*</sup> and Michael S. VanNieuwenhze<sup>\*,§,◆</sup>

<sup>†</sup>Department of Genetics, Harvard Medical School, Boston, Massachusetts 02115, United States

<sup>‡</sup>Department of Biochemistry and Biophysics, UCSF School of Medicine, San Francisco, California 94158, United States

<sup>§</sup>Department of Chemistry, Indiana University, Bloomington, Indiana 47405, United States

<sup>||</sup>Centre for Bacterial Cell Biology, Institute for Cell and Molecular Biosciences, Newcastle University, Newcastle upon Tyne, NE2 4AX, United Kingdom

<sup>⊥</sup>Department of Molecular Biology, Umeå University, SE-901 87, Umeå, Sweden

<sup>#</sup>School of Life Sciences, University of Warwick, Coventry, CV4 7AL, United Kingdom

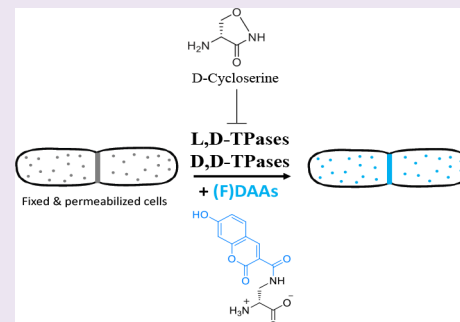
<sup>◆</sup>Department of Molecular and Cellular Biochemistry, Indiana University, Bloomington, Indiana 47405, United States

<sup>○</sup>Department of Chemistry, Utrecht University, 3584 CH, Utrecht, Netherlands

<sup>\*</sup>Department of Microbiology, Infectious Diseases, and Immunology, Faculty of Medicine, Université de Montréal, Montréal, Canada

## Supporting Information

**ABSTRACT:** Bacteria exhibit a myriad of different morphologies, through the synthesis and modification of their essential peptidoglycan (PG) cell wall. Our discovery of a fluorescent D-amino acid (FDAA)-based PG labeling approach provided a powerful method for observing how these morphological changes occur. Given that PG is unique to bacterial cells and a common target for antibiotics, understanding the precise mechanism(s) for incorporation of (F)DAA-based probes is a crucial determinant in understanding the role of PG synthesis in bacterial cell biology and could provide a valuable tool in the development of new antimicrobials to treat drug-resistant antibacterial infections. Here, we systematically investigate the mechanisms of FDAA probe incorporation into PG using two model organisms *Escherichia coli* (Gram-negative) and *Bacillus subtilis* (Gram-positive). Our *in vitro* and *in vivo* data unequivocally demonstrate that these bacteria incorporate FDAAs using two extracytoplasmic pathways: through activity of their D,D-transpeptidases, and, if present, by their L,D-transpeptidases and not via cytoplasmic incorporation into a D-Ala-D-Ala dipeptide precursor. Our data also revealed the unprecedented finding that the DAA-drug, D-cycloserine, can be incorporated into peptide stems by each of these transpeptidases, in addition to its known inhibitory activity against D-alanine racemase and D-Ala-D-Ala ligase. These mechanistic findings enabled development of a new, FDAA-based, *in vitro* labeling approach that reports on subcellular distribution of muropeptides, an especially important attribute to enable the study of bacteria with poorly defined growth modes. An improved understanding of the incorporation mechanisms utilized by DAA-based probes is essential when interpreting results from high resolution experiments and highlights the antimicrobial potential of synthetic DAAs.



## INTRODUCTION

Of the known bacterial species, nearly all possess a peptidoglycan (PG) cell wall that surrounds the cell. PG is an essential cellular component that maintains the size and shape of the bacterial cell and helps protect the cell from its environment. Given its essential roles in cell growth and division, its relative accessibility when compared to potential cytoplasmic targets, and that it is unique to bacterial cells,

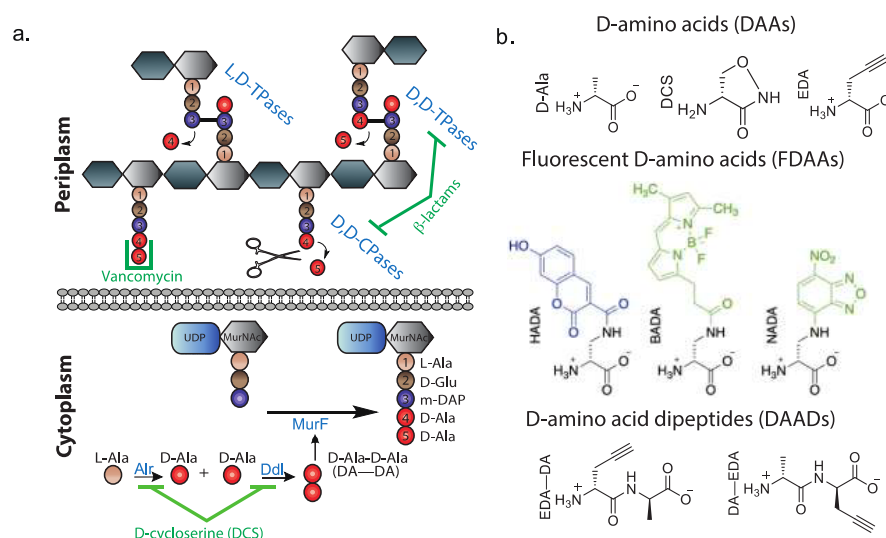
some of the most successful antibiotics target PG biosynthesis.<sup>1</sup>

The PG cell wall is a macromolecule consisting of glycan strands cross-linked by short D-amino acid (DAA)-containing peptides. The PG biosynthetic pathway is promiscuous with

Received: August 16, 2019

Accepted: November 19, 2019

Published: November 19, 2019



**Figure 1.** PG biosynthetic pathways are promiscuous and accept D-amino acid (DAA) based probes. (a) Simplified cartoon representation of the PG synthesis and modification pathways relevant to this work, along with representative PG synthesis inhibitors. (b) Representative DAA-based probes utilized in the experiments described in this manuscript.

respect to the assembly and/or utilization of the D-Ala-D-Ala (DA—DA) subunit at the terminus of the pentapeptide stem,<sup>2,3</sup> and these steps are targets of many clinically important anti-PG drugs such as D-cycloserine (DCS), the  $\beta$ -lactams, and vancomycin<sup>4</sup> (Figure 1a). Interestingly, DCS, a second-line drug currently used to treat multidrug-resistant strains of *M. tuberculosis*,<sup>4</sup> and many  $\beta$ -lactams, are DAAs, while their mirror image counterparts (i.e., the L-enantiomers) show remarkably diminished antibacterial activities.<sup>5–7</sup>

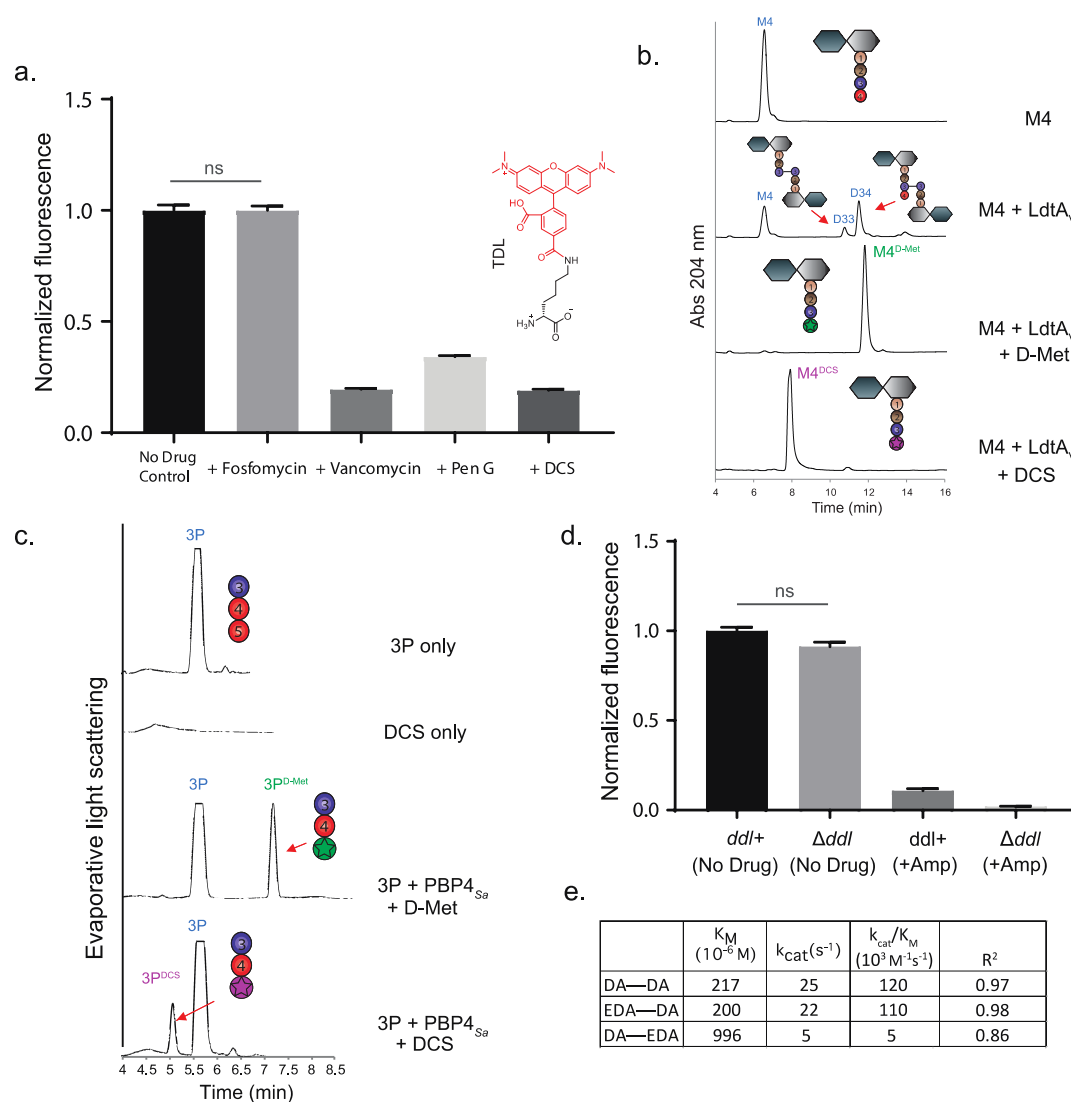
The DA—DA subunit is assembled in the cytoplasm by D-Ala-D-Ala ligase (Ddl) and is appended to UDP-MurNAc-tripeptide by MurF to provide UDP-MurNAc pentapeptide (Figure 1a). After additional downstream processing into a C55-lipid-linked disaccharide pentapeptide (lipid II), this monomeric PG subunit is translocated across the cytoplasmic membrane and incorporated into elongating glycan strands in the periplasm. Subsequently, the DA—DA subunit of the stem peptide is a substrate for cross-linking reactions that are essential for providing the PG cell wall with the requisite load-bearing properties against the cell's turgor pressure. These cross-links are installed by two distinct pathways: (1) the essential and ubiquitous D,D-transpeptidases (D,D-TPases or penicillin binding proteins, PBPs) that catalyze installation of 4–3 cross-links, or (2) the normally dispensable and more infrequent, L,D-transpeptidases (L,D-TPases) that catalyze installation of 3–3 cross-links (Figure 1a).<sup>8</sup>

Elucidating the molecular mechanisms regulating PG biosynthesis will provide valuable insights that can be applied to combat the alarming increase of multidrug resistance.<sup>9</sup> Toward this goal, we and others have recently developed new classes of synthetic D-amino acid (DAA) based probes to visualize PG assembly and dynamics in virtually all PG-containing bacterial species.<sup>10–18</sup> These probes, fluorescent D-amino acids (FDAAs), clickable DAAs, and D-amino acid dipeptides (DAADs), have advanced our fundamental knowledge of bacterial growth and division in diverse bacteria.<sup>10,14–53</sup> In order to make maximal use of the data obtained from labeling experiments utilizing these probes, a detailed understanding of probe incorporation mechanisms is required.

Here we have systematically characterized the incorporation mechanisms of common DAA-based probes in two model organisms: Gram-positive *B. subtilis* and Gram-negative *E. coli*. We leveraged chemical genetics, genetics, microscopy, and *in vitro* approaches in combination with labeling experiments that utilized: EDA, a small clickable DAA; HADA, an FDAA; along with EDA—DA and DA—EDA, two clickable small DAADs (Figure 1b). Our data suggest that DAADs are incorporated using the cytoplasmic (lipid II) pathway, while single DAA-based probes (e.g., EDA, HADA) are incorporated outside the cytoplasm by the D,D-TPases, and, if present, the L,D-TPases. Our chemical genetics experiments revealed a previously unknown mode of action for DCS; specifically, that it is a substrate for both D,D-TPases and L,D-TPases and that it is readily incorporated into pentapeptide and tetrapeptide stems, respectively (Figure 1b), perhaps providing an important insight for further investigation of novel D-amino acid-based antibacterial agents. Finally, our improved mechanistic understanding helped us design a new, FDAA-based labeling approach that reports on subcellular distribution of muropeptides in bacterial cells.

## RESULTS

**Chemical Genetics Approach Reveals Transpeptidase-Mediated Incorporation of DAAs in *Bacillus subtilis*.** In order to probe the mechanism of FDAA incorporation *in vivo*, we first attempted a chemical genetics approach. Since bacterial species usually have multiple L,D-TPases and/or commonly essential D,D-TPases, deleting them all is not feasible. We first focused on vegetative *B. subtilis* cells that reportedly lacked 3,3-cross-links typical of L,D-TPase activity.<sup>54</sup> This reduced the potential modes of FDAA installation to incorporation by the D,D-TPases or to cytoplasmic incorporation via the lipid II pathway. In order to verify the lack of L,D-TPase mediated incorporation, we pre-labeled vegetative *B. subtilis* cells with HADA. This was followed by ethanol-fixing and permeabilization of the cells followed by treatment with an *E. coli* D,D-carboxypeptidase/endopeptidase (PBP4<sub>Ec</sub>, the product of the *dacB* gene), *in vitro*. While PBP4<sub>Ec</sub> did not remove HADA from tetrapeptides in *E.*



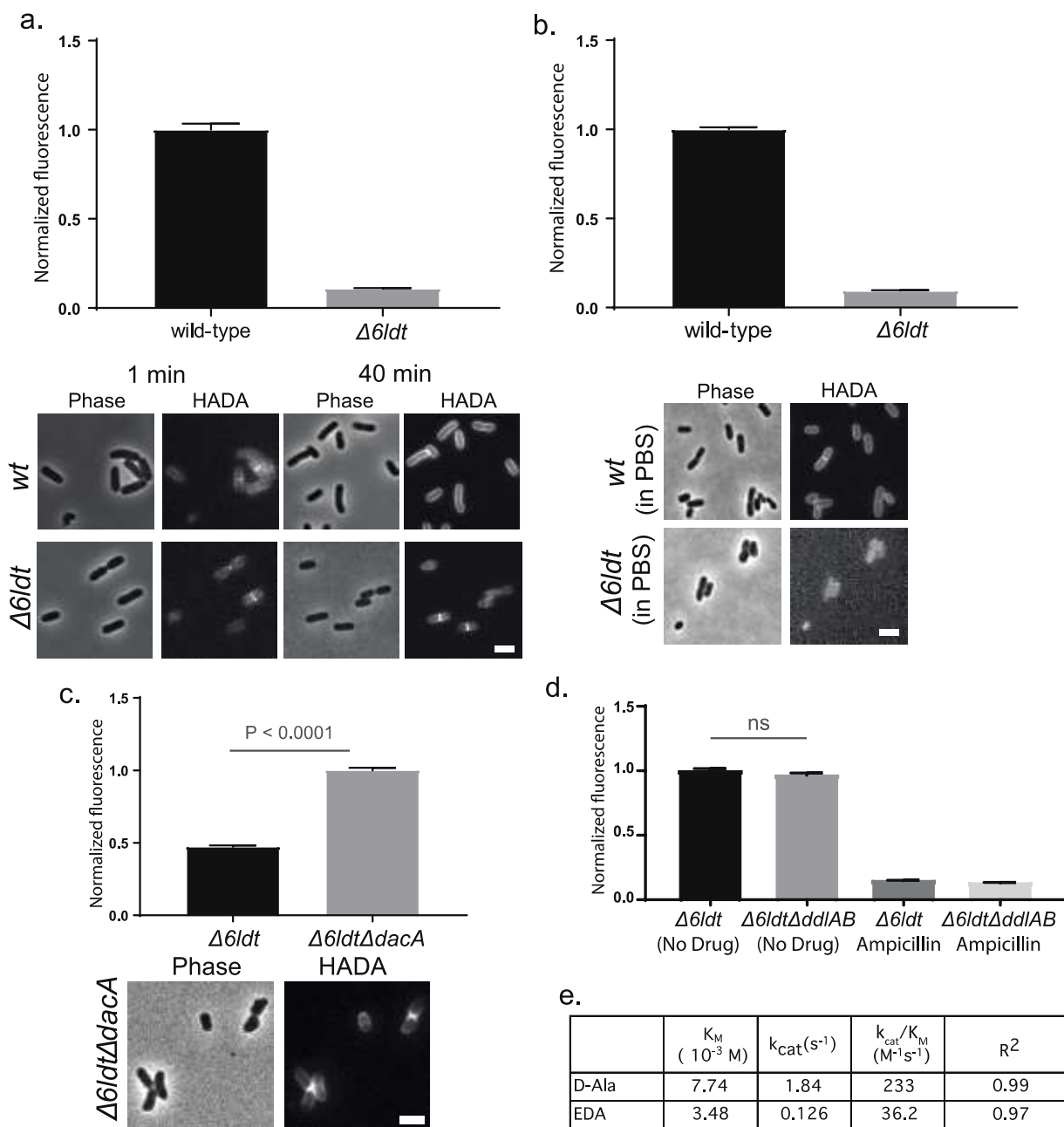
**Figure 2.** *B. subtilis* cells do not incorporate (F)DAAs cytoplasmically, but through reactions mediated by D,D-TPases, which can be inhibited by D-cycloserine. (a) A brief pretreatment of live *B. subtilis* cells with vancomycin, penicillin G (Pen G), and D-cycloserine (DCS), significantly inhibited FDAA incorporation. No inhibition of FDAA incorporation was observed with fosfomycin. (b) LdtA<sub>Vc</sub> incorporated DCS into M4, comparable to other DAAs, e.g., D-Met, *in vitro*. (c) PBP4<sub>Sa</sub> incorporated DCS into a synthetic *N*<sub>ω</sub>, *N*<sub>ε</sub>-Diacetyl-L-Lys-D-Ala-D-Ala tripeptide (3P), *in vitro*. (d) Live *B. subtilis* wild-type and *B. subtilis*  $\Delta$ ddl cells, grown in S7<sub>50</sub> minimal media supplemented with DA—DA, incorporated HADA comparably; HADA incorporation was significantly inhibited by ampicillin pretreatment. (e) DA—EDA was a poor substrate for MurF<sub>Bs</sub> *in vitro*, but EDA—DA performed similarly well to the endogenous substrate, DA—DA. Column bar graphs represent mean relative signal  $\pm$  SD quantified from at least  $N > 100$  cells. Error bars are SEM.

*coli* cells (Figure S11a), it completely removed the signal from vegetative ethanol-fixed pentapeptide-rich *B. subtilis*  $\Delta$ dacA cells pre-labeled with HADA (Figure S11b). These results are in agreement with previous observations that vegetative *B. subtilis* cells incorporate HADA exclusively into their pentapeptides.<sup>15</sup>

In the absence of L,D-TPase activity, chemical inhibition of extracellular D,D-TPases or inhibition of cytoplasmic D-Ala-D-Ala synthesis and incorporation could provide valuable information on the route of FDAA incorporation. We first confirmed that cells remained viable after such brief drug exposures (Figure S11c), consistent with a recent report.<sup>55</sup> Our initial experiments screening different FDAAs and drugs showed that both  $\beta$ -lactams and D-cycloserine (DCS) had the potential to significantly inhibit the incorporation of FDAAs in live *B. subtilis* in a drug- and FDAA-dependent manner (Figures 2a and S11c). For example, the inhibition by

DCS was particularly pronounced and comparable to penicillin G, a  $\beta$ -lactam, when the FDAA was TDL, a large red FDAA linked to D-lysine, ( $\sim$ 65–80% inhibition, Figure 2a). A similar effect was observed in *E. coli* wild-type cells. While D-cycloserine and ampicillin both inhibited HADA incorporation (by  $\sim$ 30%), meropenem inhibited virtually all HADA incorporation (Figure S11d).

Given the significant inhibition observed for both DCS and  $\beta$ -lactams—and the well-characterized inhibitory activity of the  $\beta$ -lactams toward the bacterial transpeptidases—we postulated that DCS, a cyclized D-serine analogue with a free amino group (Figure 1b), might behave as a competitive inhibitor of periplasmic L,D- and/or D,D-TPases. In support of this hypothesis, both LdtA<sub>Vc</sub>, a representative L,D-TPase from *Vibrio cholerae*,<sup>56</sup> and PBP4<sub>Sa</sub>, a soluble version of recombinant PBP4 from *Staphylococcus aureus*,<sup>17</sup> incorporated DCS into



**Figure 3.** *E. coli* cells incorporate (F)DAAs through reactions mediated by L,D- and D,D-TPases, and not cytoplasmically. (a) HADA incorporation in *E. coli* BW25113 $\Delta$ 6LDT cells ( $\Delta$ 6LDT) was  $\sim$ 10-fold lower than that observed in *E. coli* wild-type cells. Unlike wild-type cells, which reveal extensive accumulation of FDAA signal around the entire cell, FDAA labeling in the  $\Delta$ 6LDT strain was predominantly limited to the sites of new growth. (b) Live *E. coli* wild-type cells, but not  $\Delta$ 6LDT cells, incorporated FDAAs in a growth-independent manner. (c) Live *E. coli*  $\Delta$ 6LDT $\Delta$ *dacA* cells accumulated significantly more HADA signal compared to  $\Delta$ 6LDT. (d) Live  $\Delta$ 6LDT and *E. coli*  $\Delta$ 6LDT $\Delta$ *ddlAB* cells, grown in M9 minimal media supplemented with DA-DA, incorporated HADA comparably; HADA incorporation was inhibited by ampicillin pretreatment. (e) Compared to D-Ala, EDA was a poor substrate for DdlB<sub>*E. coli*</sub> *in vitro*. Micrographs are adjusted for qualitative comparison only. Values in column bar graphs represent mean relative signal quantified from at least  $N > 100$  cells. Scale bars, 2  $\mu$ m.

appropriate soluble substrate analogues *in vitro*.<sup>13</sup> LdtA<sub>Vc</sub> incorporated DCS into tetrapeptides comparably to D-methionine, a DAA that is naturally produced by *Vibrio cholerae* cells<sup>2</sup> (Figure 2b); the product of each reaction was confirmed by MS (Figure SI2a). PBP4<sub>Sa</sub> incorporated DCS into a synthetic N<sub>ω</sub> N<sub>ε</sub>-diacetyl-L-Lys-D-Ala-D-Ala tripeptide (3P) albeit to a lower extent when compared to identical experiments utilizing D-methionine (Figure 2c). Moreover, excess DCS directly competed with incorporation of FDAAs into ethanol-fixed cells by LdtA<sub>Vc</sub> in a FDAA-specific manner

(Figure SI2b). These data suggest that, in addition to its known cytoplasmic targets (alanine racemase and D-Ala-D-Ala ligase),<sup>57</sup> DCS, a clinically important antibiotic, has the previously uncharacterized potential to competitively inhibit L,D- and D,D-TPases, and therefore its utilization would not yield clear results probing (F)DAA incorporation mechanisms.

**Vegetative *B. subtilis* Cells Incorporate FDAAs with D,D-TPases and Not Cytoplasmically.** Given these difficulties, we turned to a conventional genetics approach for deletion of nonessential (or conditionally essential)

pathways and interrogation of potential DAA incorporation mechanisms through comparison of FDAA accumulation between otherwise isogenic strains. Because vegetative *B. subtilis* cells lack L,D-TPase activity (Figure SI1b), knocking out its ability to form DA–DA would also eliminate its ability to incorporate DAAs cytoplasmically and leave D,D-transpeptidation as the only feasible route for DAA incorporation (Figure 1a). Deleting the single and essential DA–DA-ligase gene (*ddl*) in *B. subtilis* provided a strain that was auxotrophic for exogenously provided DA–DA. Under identical growth conditions, wild-type *B. subtilis* and *B. subtilis*  $\Delta$ *ddl* cells accumulated a HADA signal to a comparable extent, while ampicillin treatment inhibited >80% of their initial signal (Figure 2d). This result strongly suggests that FDAAs are not incorporated cytoplasmically in *B. subtilis*.

Our *in vitro* findings with MurF from *Bacillus subtilis* (MurF<sub>Bs</sub>), the next cytoplasmic enzyme downstream of Ddl, support the conclusion that FDAAs are not incorporated cytoplasmically in *B. subtilis*. These experiments revealed that MurF<sub>Bs</sub> accepted EDA–DA, a clickable DAAD that eventually generates lipid II tagged in the fourth position of the pentapeptide stem,<sup>16</sup> as well as its endogenous substrate, DA–DA both in terms of its affinity and turnover (Figure 2e). However, DA–EDA, a DAAD that generates a pentapeptide tagged in the fifth (i.e., terminal) position, is a significantly poorer (~20-fold) substrate than DA–DA. This observation, along with the enzymatic activity of the endogenous carboxypeptidases (e.g., PBP5), may explain the differential DAAD labeling previously observed in live *B. subtilis* cells; specifically, EDA–DA labeled the PG of *B. subtilis* much more strongly than DA–EDA.<sup>16</sup> The *in vitro* data also suggest that cytoplasmic DAA incorporation into the terminal position of the pentapeptide stem (e.g., with DA–EDA)—the pentapeptide terminus is the only site labeled by (F)DAAs in vegetative *B. subtilis* cells (Figure SI1b)—is particularly disfavored by MurF in *B. subtilis* (Figure 2e). Furthermore, excess DA–DA did not significantly compete with the FDAA label accumulation in live vegetative *B. subtilis* cells, but D-alanine and D-tyrosine, a DAA that is naturally produced by *B. subtilis* cells,<sup>2</sup> (>50-fold decrease) did (Figure SI2c). Thus, we conclude that (F)DAAs are not incorporated cytoplasmically in vegetative *B. subtilis* cells. By the process of genetic elimination and in combination with the Supporting Information, our results strongly suggest that, in vegetative *B. subtilis* cells, FDAAs are incorporated predominantly (if not solely) through the activity of the periplasmic D,D-transpeptidases.

***E. coli* Cells Incorporate FDAAs by L,D-TPases in a Growth Independent Manner.** In contrast to *B. subtilis*, *E. coli* is rich in L,D-TPase activity.<sup>58</sup> We recently reported on a mutant *E. coli* strain in which all the predicted L,D-TPases were deleted.<sup>36</sup> Cells from this strain, *E. coli* BW255113 $\Delta$ 6LDT (hereafter referred to as  $\Delta$ 6LDT), revealed a ~10-fold lower HADA signal compared to wild-type *E. coli* (Figure 3a). Among the six single L,D-TPase knockout strains,  $\Delta$ *ldtD* cells showed the least HADA incorporation (~50%, Figure SI3a). Consistently, double, triple, and quadruple L,D-TPase mutants showed a significant decrease in label incorporation compared to wild-type as long as *ldtD* is one of the deleted genes (Figure SI3b). These results suggest that the major mode(s) of FDAA incorporation in actively growing *E. coli* is due to the L,D-TPases, primarily LdtD.<sup>41</sup>

Early labeling experiments revealed that wild-type *E. coli* cells begin to accumulate FDAA signal at sites of new growth

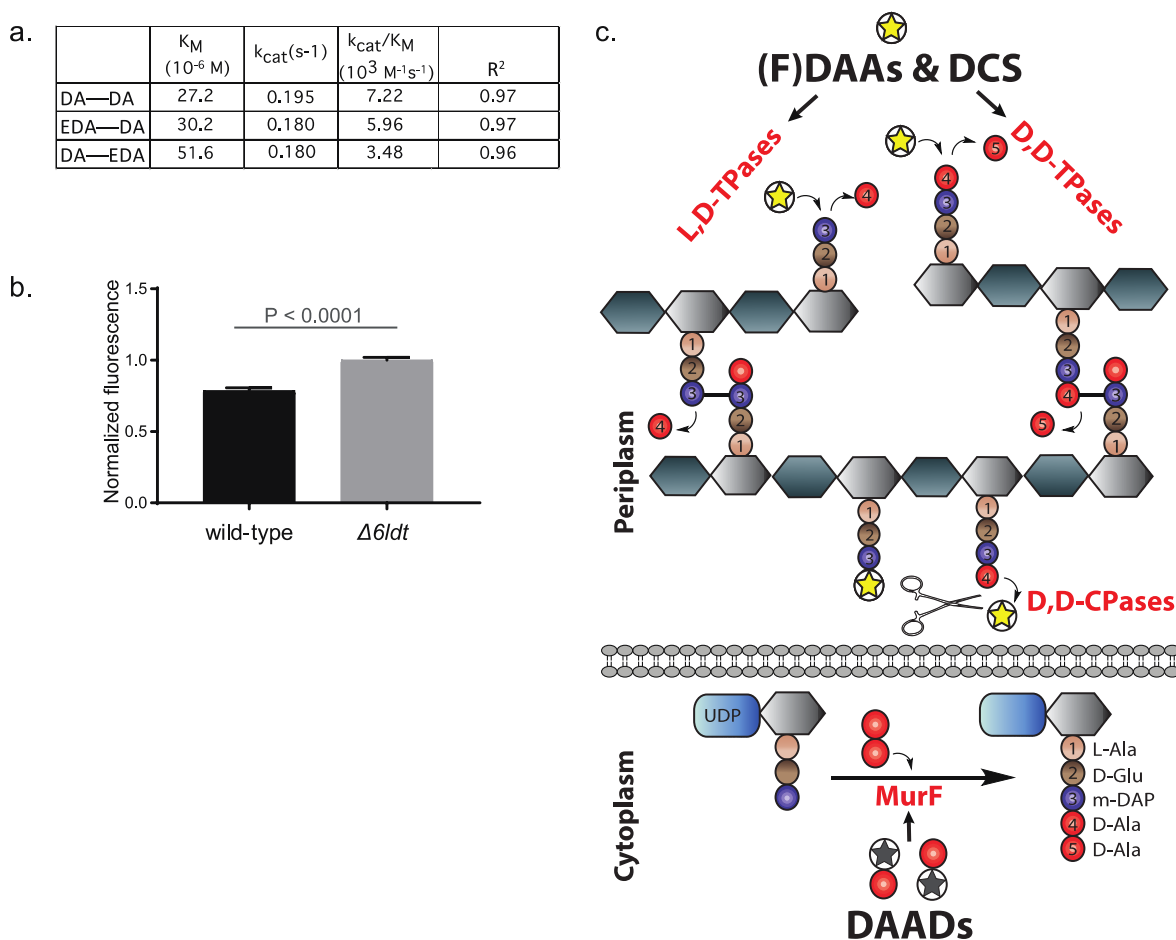
(i.e., septum and side walls) eventually plateauing into uniformly labeled cells over 1–2 generations.<sup>15</sup> In contrast, *E. coli*  $\Delta$ 6LDT cells accumulate FDAA signal to a lower extent and preserve the signal persistently at sites of new growth (Figure 3a). This uniform and peripheral accumulation of FDAA signal in wild-type *E. coli* cells suggested a growth-independent, L,D-TPase-facilitated DAA incorporation.

Consistently, nutrient starved cells, which are kept in phosphate buffered saline (PBS) for 1 h at RT, of wild-type *E. coli* incorporated HADA strongly and uniformly, whereas *E. coli*  $\Delta$ 6LDT cells did not show any significant signal accumulation above background (Figure 3b). A complementation assay with nutrient starved *E. coli* cells suggested that this growth independent FDAA incorporation in buffer was predominantly due to overexpression of L,D-TPase genes known to generate 3–3 cross-links, *ldtD* and *ldtE*,<sup>58</sup> and less so due to L,D-TPases that anchor Braun's lipoprotein (*ldtA*, *ldtB*, or *ldtC*) or *yafK* (Figure SI3c). This property was not specific to *E. coli*. Diverse bacteria rich in predicted L,D-TPases, such as the deltaproteobacterium *Bdellovibrio bacteriovorus*<sup>36</sup> and the alphaproteobacterium *Agrobacterium tumefaciens*,<sup>27</sup> also incorporated HADA in a growth-independent manner (Figure SI 3d).

Collectively, these results suggested that L,D-TPase mediated DAA incorporation in *E. coli* can occur independently of cell growth.<sup>59</sup> On the other hand, the persistent signal observed in the absence of L,D-TPase activity (Figure 3a) points to the presence of an additional mode for DAA incorporation in *E. coli*.

**D,D-TPases Incorporate DAAs into the Pentapeptides of PG in *E. coli* Cells.** Pentapeptides are rare in *E. coli* PG.<sup>60</sup> We hypothesized that the relatively faint FDAA signal localized at sites of new growth in cells lacking L,D-TPases represented probe incorporation into pentapeptides. If so, deleting the gene for one of the major *E. coli* D,D-CPases (*dacA*) in this background should increase the FDAA labeled pentapeptide pools in *E. coli* PG. Indeed, *E. coli*  $\Delta$ 6LDT $\Delta$ *dacA* cells showed 2-fold greater incorporation of HADA signal than *E. coli*  $\Delta$ 6LDT (Figure 3c). We observed that HADA accumulation in *E. coli*  $\Delta$ 6LDT $\Delta$ *dacA* cells could be eliminated by treatment with a carboxy/endopeptidase (PBP4<sub>Ec</sub>) *in vitro* (Figure SI4a). The labeling trends observed with these mutants and EDA, a small clickable DAA, were comparable (Figure SI4b). These results reveal previously underappreciated DAA incorporation into pentapeptides in *E. coli*.

This pentapeptide labeling, could be achieved via the cytoplasmic route (through Ddl/MurF), an exchange reaction mediated by the D,D-transpeptidases (i.e., the PBPs), or a combination of the two. Therefore, we deleted *ddlA* and *ddlB* on top of 6 L,D-TPases generating an *E. coli*  $\Delta$ 6LDT $\Delta$ *ddlAB* strain that is auxotrophic for DA–DA. This mutant strain lacks both L,D-TPase activity and the ability to incorporate DAAs cytoplasmically. Similar to the aforementioned case in *B. subtilis*, *E. coli*  $\Delta$ 6LDT $\Delta$ *ddlAB* cells accumulated HADA (Figure 3d) or EDA (Figure SI4c) signals comparably to identically treated *E. coli*  $\Delta$ 6LDT cells. Ampicillin treatment significantly inhibited HADA accumulation in both strains (Figure 3d). Moreover, DCS significantly inhibited (F)DAA signal incorporation even in the absence of Ddl, and in the presence of excess DA–DA, in both *E. coli* and *B. subtilis* (Figure SI4c-d), providing further support for the notion that DCS may also function as a DAA-like competitive inhibitor of D,D-TPases in both organisms. Collectively, these results



**Figure 4.** FDAAs are incorporated by periplasmic transpeptidases and DAADs cytoplasmically. (a) MurF<sub>pa</sub> incorporated DAADs as well as the native substrate (DA—DA), *in vitro*. (b) Live  $\Delta 6LDT$  cells incorporated a greater EDA—DA (1 mM for 1 h) signal than *E. coli* wild-type cells. Values in column bar graphs represent the mean relative signal quantified from at least  $N > 150$  cells. (c) Cartoon representation depicting that in *E. coli* DAAs, including FDAAs and DCS, are substrates for periplasmic L,D-TPases, D,D-TPases, or D,D-CPases and that DAADs are substrates for cytoplasmic MurF.

suggest that the D,D-TPases, and not the cytoplasmic enzymes, are primarily responsible for incorporation of DAAs into pentapeptides in *E. coli* and in *B. subtilis*.

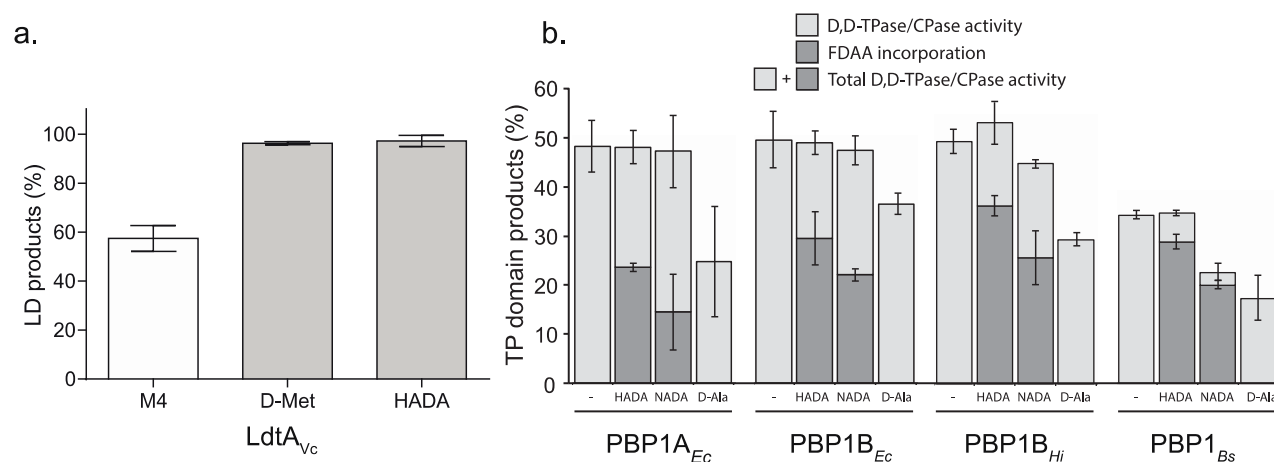
**Ddl Disfavors the Cytoplasmic Incorporation of DAAs.** For cytoplasmic incorporation, following cellular import, a (F)DAA needs to be tolerated by Ddl and incorporated into a corresponding DAAD. To test our conclusion that (F)DAAs are not incorporated cytoplasmically, we assessed the ability of *E. coli* DdlB (DdlB<sub>Ec</sub>) to ligate D-Ala to EDA, the small clickable DAA, forming DA—EDA, *in vitro*. Under previously published conditions, DdlB<sub>Ec</sub> showed 2-fold higher affinity for EDA than for D-Ala; however, the apparent rate of the reaction with EDA was 10-fold slower than the reaction with D-Ala (Figure 3e). This suggests that cytoplasmic (F)DAA incorporation may be primarily rejected by Ddl, especially since the cytoplasmic steps lying downstream of Ddl seem to be significantly more tolerant.<sup>16</sup> Indeed, MurF from *Pseudomonas aeruginosa* (MurF<sub>pa</sub>, an enzyme that shows high sequence and kinetic similarity to *E. coli* MurF<sup>61</sup>) incorporated both of the clickable DAADs, EDA—DA and DA—EDA, with comparable rates and affinities to the native substrate, DA—DA (Figure 4a). This tolerance of MurF (and presumably the downstream steps) could explain how small DAADs could be used as common and versatile metabolic PG

labeling alternatives to FDAAs and why they can rescue DA—DA deficiencies in *E. coli*, *B. subtilis*, and *Chlamydiae*.<sup>16,37</sup>

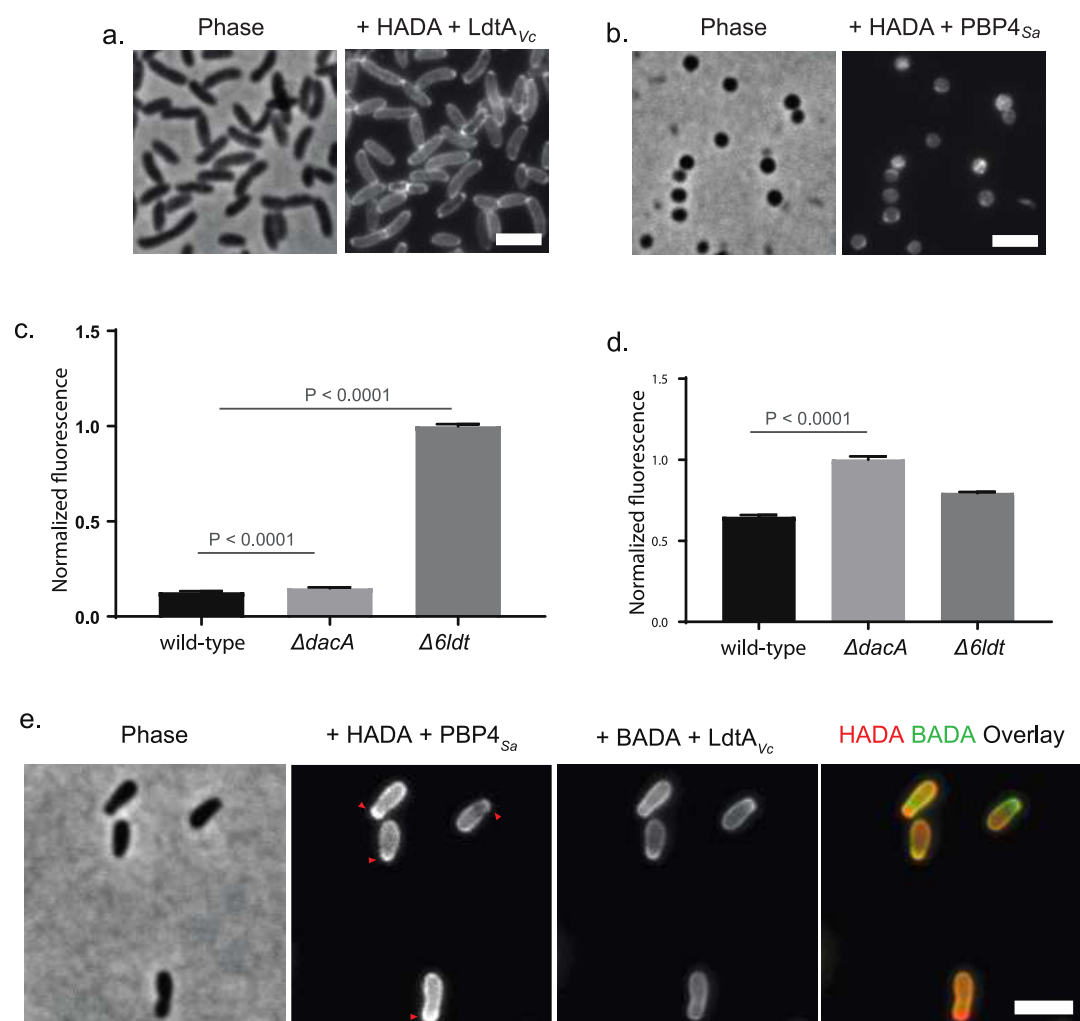
Lastly, we wanted to test if *E. coli* L,D-TPases play a role in DAAD incorporation. Cells from *E. coli*  $\Delta 6LDT$  grown for 1–2 generations in the presence of EDA—DA incorporated approximately 20% more DAAD signal compared to wild-type *E. coli* cells (Figure 4b). These data provide strong evidence that L,D-TPases do not play a significant role in DAAD incorporation.

From our combined results, we conclude that the incorporation of FDAA and DAAD probes can be used to distinguish between two distinct biosynthetic pathways. FDAA probe incorporation reports on the activity of the extracytoplasmic L,D- and D,D-TPases, whereas DAAD probe incorporation reports on the cytoplasmic (lipid II) pathway, i.e., nascent PG synthesis (Figure 4c).

**FDAAs Report on L,D- and D,D-TPase Activity and Muropeptide Distribution in Fixed Cells.** Our results and previous *in vitro* work with D-amino acids (DAAs) revealed that both L,D-TPases and D,D-TPases of different bacterial origins can utilize DAAs as acyl-acceptor substrates in the presence of appropriate acyl-donors.<sup>17,56,62</sup> Consistently, representative enzymes with known L,D-TPase or D,D-TPase activities could utilize larger fluorescent DAAs (FDAAs) as acyl-acceptor substrates *in vitro*. A representative



**Figure 5.** FDAAs are efficiently incorporated into PG precursors. (a) LdtA<sub>Vc</sub> incorporated HADA into the soluble mucopeptide disaccharide tetrapeptide (M4) comparable to other DAAs, e.g., D-Met, *in vitro*. (b) Different high-molecular-weight D,D-TPases from diverse bacteria incorporated HADA and NADA during the *in vitro* synthesis of nascent PG from lipid-II without significantly changing their total D,D-TPase and DD,D-CPase product distribution. The values are the mean  $\pm$  SD of three independent experiments.



**Figure 6.** FDAAs report on the abundance and subcellular distribution of mucopeptides in ethanol fixed and permeabilized bacterial cells *in vitro*. (a) Ethanol fixed *V. cholerae* cells are substrates for LdtA<sub>Vc</sub> and FDAAs, e.g., HADA, *in vitro*. (b) Ethanol fixed *S. aureus* cells are substrates for PBP4<sub>Sa</sub> and FDAAs *in vitro*. (c–d) Ethanol fixed *E. coli* cells are substrates for LdtA<sub>Vc</sub> or PBP4<sub>Sa</sub> and FDAAs *in vitro*. (c) FDAAs and LdtA<sub>Vc</sub> can report on PG tetrapeptide abundance of the *E. coli*  $\Delta$ 6LDT and  $\Delta$ dacA strains *in vitro*. (d) FDAAs and PBP4<sub>Sa</sub> can report on PG pentapeptide abundance of the *E. coli*  $\Delta$ 6LDT and  $\Delta$ dacA strains *in vitro*. (e) Sequential PBP4<sub>Sa</sub> (with HADA) and LdtA<sub>Vc</sub> (with BADA) labeling can report on differential subcellular mucopeptide distribution of a strain, e.g., in ethanol fixed *A. tumefaciens* cells, red arrows. Column bar graphs represent mean relative signal quantified from at least  $N > 100$  cells. Error bars are SEM. Scale bars, 2  $\mu$ m.

L<sub>1</sub>D-TPase from *Vibrio cholerae* (LdtA<sub>Vc</sub>) incorporated HADA into a soluble disaccharide tetrapeptide (Figure 5a) while four recombinant high molecular weight PBPs (*E. coli*, PBP1A<sub>Ec</sub> and PBP1B<sub>Ec</sub>; *Haemophilus influenzae*, PBP1A<sub>Hi</sub>; and *B. subtilis*, PBP1<sub>Bs</sub>) facilitated incorporation of FDAAs during the synthesis of nascent PG from a lipid II precursor (Figure 5b). The FDAAs incorporation activities were comparable to naturally produced D-methionine<sup>2</sup> (Figure 5a) or were at the expense of their native cross-linking/carboxypeptidase activities (Figure 5b). This suggested that FDAAs did not significantly interfere with the native functions of these enzymes and could serve as proxy reporters for the DAA incorporation activities of L<sub>1</sub>D-TPases or for cross-linking/carboxypeptidase activities of D<sub>1</sub>D-TPases.

Next, we tested whether these recombinant transpeptidases would incorporate FDAAs into isolated sacculi *in vitro*. Early attempts with isolated *V. cholerae* sacculi indicated high background/nonspecific labeling (Figure SI5a). This led us to utilize ethanol-fixed and permeabilized intact cells as transpeptidase substrates, a simple substrate preparation approach that we have previously employed.<sup>16</sup> Treatment of bacterial cells with ice-cold ethanol inactivates virtually all cellular activity and permeabilizes membranes for downstream applications while keeping the cells intact and well separated for microscopy experiments.<sup>16</sup> Indeed, recombinant LdtA<sub>Vc</sub> incorporated HADA into ethanol-fixed *V. cholerae* cells *in vitro* (Figure 6a). Label incorporation was specific for PG (Figure SI5b); parallel experiments with the L-isomer, HALA, resulted in a 5-fold decrease in fluorescence incorporation (Figure SI5c). We similarly observed a minor, and *V. cholerae*-specific, HALA incorporation in live *V. cholerae* cells, but not live *E. coli* cells, albeit approximately 20-fold less efficiently than HADA (Figure SI 5d). LdtA<sub>Vc</sub> incorporated HADA into ethanol-fixed cells from a variety of Gram-negative species (Figure SI6a). Similarly, a soluble version of recombinant PBP4 from *S. aureus* (PBP4<sub>Sa</sub>)<sup>17</sup> incorporated HADA into ethanol-fixed *Staphylococcus aureus* cells (Figure 6b) and ethanol-fixed *E. coli* cells (Figure SI6b). Recombinant PBP4<sub>Sa</sub> also incorporated HALA into fixed *E. coli* cells, although it was incorporated approximately 20-fold less efficiently than HADA (Figure SI6b).

The PG of *E. coli* is rich in tetrapeptides,<sup>58</sup> but the abundance of pentapeptides increases in strains lacking D<sub>1</sub>D-carboxypeptidases<sup>60</sup> (e.g., PBP5 encoded by *dacA*). Consistently, LdtA<sub>Vc</sub> incorporated HADA into ethanol-fixed *E. coli*  $\Delta$ *dacA* cells comparably to wild-type cells (Figure 6c), suggesting that the carboxypeptidase activity of *DacA* may not significantly impact overall tetrapeptide abundance. However, a 7-fold increase in HADA incorporation was observed using ethanol-fixed cells from an *E. coli* strain that lacked all of the six known or predicted genes encoding for L<sub>1</sub>D-TPases,  $\Delta$ 6LDT (Figure 6c). The enhanced HADA incorporation in the  $\Delta$ 6LDT strain relative to the wild-type strain suggests that LdtA<sub>Vc</sub> combined with the FDAAs, can report on the relative abundance of tetrapeptides in PG.

On the other hand, PBP4<sub>Sa</sub> incorporated HADA into fixed cells from an *E. coli* strain that lacked a major D<sub>1</sub>D-CPase, BW25133 $\Delta$ *dacA*, significantly more than the wild-type, strongly suggesting that pentapeptides are the preferred substrate for PBP4<sub>Sa</sub>-mediated HADA incorporation (Figure 6d). Sequential enzymatic labeling of ethanol-fixed cells with differently colored FDAAs was possible. Treatment of ethanol-fixed  $\Delta$ 6LDT $\Delta$ *dacA* cells with HADA and PBP4<sub>Sa</sub> followed by

BADA, a green, BODIPY-FL containing FDAAs that is spectrally distinguishable from HADA, and LdtA<sub>Vc</sub> resulted in superimposable labeling patterns (Figure SI6c). The same experimental approach with polarly growing *Agrobacterium tumefaciens* cells showed complementary labeling patterns particularly in young cells; a HADA signal (reporting on pentapeptides) appeared enriched at the very tip of the growing pole, followed by a band of BADA signal (reporting on tetrapeptides, Figure 6e). These results show that L<sub>1</sub>D- and D<sub>1</sub>D-TPases can incorporate FDAAs into ethanol fixed and permeabilized cells from diverse species *in vitro* while reporting on subcellular tetrapeptide/pentapeptide distribution of a strain. Moreover, these *in vitro* results support the direct role of these periplasmic L<sub>1</sub>D- and D<sub>1</sub>D-TPases in incorporating (F)DAAs in different bacteria.

## DISCUSSION

Bacteria have the evolutionarily preserved ability to produce DAAs, and their PG biosynthetic pathways are uniquely promiscuous for utilization of DAAs that provide them with a survival advantage in the wild.<sup>36,63</sup> The design of multiple classes of DAA-based PG labeling probes that take advantage of this promiscuity are now widely used.<sup>10,14–18,29</sup> While dissecting the routes for incorporation (and for turnover) of these PG probes has been challenging, without this knowledge, the interpretation of the data generated with these probes in a given species is limited. Here, we provide a roadmap to explore the mechanisms by which DAA-based probes are incorporated into the PG by combining genetics, chemical genetics, and *in vitro* approaches for two model organisms, *E. coli* and *B. subtilis*. We provide strong evidence that (F)DAAs, including the DAA drug DCS, are incorporated by extracytoplasmic (Gram-positive) or periplasmic (Gram-negative) L<sub>1</sub>D-TPases and D<sub>1</sub>D-TPases in contrast to DAADs, which are cytoplasmically incorporated (Figure 4c).

Prior to our discovery of the FDAAs, previous work with DAAs<sup>2,17,29,56,62</sup> (e.g., D-methionine) and various DAADs,<sup>3,16,37,49,64</sup> showed that incorporation of any DAA is tolerated by these D-Ala assembly/utilization steps that are common in PG containing bacteria. Previous work strongly suggested DAA probe incorporation was mediated by the bacterial transpeptidases; however, definitive experiments to rule out cytoplasmic incorporation had yet to be reported. The ability to distinguish these pathways has important ramifications with respect to interpretation of results from FDAAs labeling experiments. For example, cytoplasmic incorporation of a DAA probe would report on nascent PG synthesis; the probe would be incorporated into the lipid II intermediate that would subsequently be detected upon polymerization into glycan strands. Alternatively, periplasmic incorporation would report on the localized activity of transpeptidases on the bacterial cell surface (Figure 1a). Therefore, any cytoplasmic/periplasmic cross-reactivity of a probe would significantly complicate either of these interpretations. The mechanistic picture is further complicated in experiments that are carried out in the presence of D-cycloserine (DCS). Since DCS is a well-established inhibitor of alanine racemase and D-Ala-D-Ala ligase (Ddl), enzymes that are critical for the cytoplasmic assembly of D-Ala-D-Ala, it is logical to conclude that diminished DAA probe incorporation in the presence of DCS is indicative of a cytoplasmic pathway for probe incorporation. However, our data have revealed that DCS



has a previously unknown mode of action that also directly impacts TPase-mediated probe incorporation.

The mechanism question is convoluted partly because of the essentiality and/or redundancy of enzymes for a particular route of (F)DAA incorporation. For example, *E. coli* has 2 Ddls, 6 predicted L,D-TPases, and 12 D,D-TPases/CPases (i.e., penicillin-binding proteins, PBPs). Understandably, this creates an opportunity to utilize a chemical genetics approach where all enzymes in a pathway are inhibited simultaneously, as we and others have done previously.<sup>23,24,35,37,55,56</sup> However, here we show that implementation of a chemical genetics approach, based on inhibition of probe incorporation by anti-PG antibiotics, was insufficient for multiple reasons. Even when the toxicity of these agents is controlled for, it is difficult to conclusively rule out indirect effects. For example, vancomycin inhibits FDAA incorporation in *B. subtilis*. However, this effect could arise directly, through inhibition of D,D-TPase-dependent FDAA incorporation, or indirectly, through inhibition of nascent PG synthesis that results in depletion of the substrate utilized in D,D-TPase-mediated FDAA incorporation. Interpretation of probe incorporation data obtained with antibiotics was further complicated by cross-reactivities of drugs like meropenem that inhibit FDAA incorporation by both the L,D-TPases and the D,D-TPases or, as demonstrated here, by DCS that inhibits each of the three possible routes for probe incorporation.

Since DCS is a well-established inhibitor of alanine racemase and D-Ala-D-Ala ligase (Ddl), enzymes that are critical for the cytoplasmic assembly of D-Ala-D-Ala, it was initially thought that diminished DAA probe incorporation in the presence of DCS was indicative of a cytoplasmic pathway for probe incorporation. However, our data have revealed that DCS can directly compete with transpeptidase-mediated (F)DAA incorporation. This unexpected behavior is likely because DCS is also a DAA and may point to a heretofore unidentified mode of action of DCS on TPase-mediated reactions. Indeed, a D,D-CPase mutation has been shown to confer resistance to DCS in *Mycobacterium*.<sup>65</sup> Although this multiple target reactivity makes DCS a problematic reagent for investigation of FDAA incorporation mechanisms, such reactivity is highly desirable property for development of a potent drug.

The (F)DAA incorporation activities are driven by the exchange of the terminal D-Ala residues in tetrapeptides and pentapeptides catalyzed by L,D- and D,D-TPases (Figure 1a), respectively. We show that this differential activity can be utilized to probe the subcellular distribution of tetrapeptides and pentapeptides by the sequential incubation of recombinant L,D- and D,D-TPases and differently colored FDAAs with ethanol-fixed bacterial cells, *in vitro*. This sample preparation approach takes less than an hour while keeping the cells intact. Since the PG that is being labeled by this approach is made naturally by the strain of interest (i.e., it is label-free), this method also offers access to a native-like substrate scaffold rich in information regarding mucopeptide spatial distribution. The visualization of FDAA labeling then decodes this distribution, the composition of which may vary with cells from different mutant strains. This method will be particularly useful for investigating the roles of relative distribution of PG tetrapeptides and pentapeptides in bacteria with poorly understood growth modes (e.g., polar growth).<sup>20</sup> Indeed, the dual color labeling in ethanol-fixed *Agrobacterium tumefaciens* (Figure 6e) suggests that the polar growth of this bacterium

might necessitate pentapeptide incorporation at the very tip of the growing cell.

Previous mucopeptide analyses suggested that *E. coli* incorporate (F)DAAs predominantly into tetrapeptides.<sup>15</sup> This label incorporation into tetrapeptides is L,D-TPase dependent; *E. coli* cells that lack all six L,D-TPases accumulate an order of magnitude less (F)DAA signal compared to the parent. Surprisingly, we observed that evolutionarily diverse and L,D-TPase-rich Gram negative-bacteria including *A. tumefaciens* (14 homologues), *E. coli* (six homologues), or *B. bacteriovorus* (19 homologues<sup>36</sup>) incorporate FDAAs under nutrient-starved conditions in a *growth-independent* manner. In *E. coli*, wild-type cells strongly incorporated FDAAs into PG under nutrient-starved conditions, but an isogenic L,D-TPase-null strain did not. This explains the loss of observable growth patterns during prolonged FDAA pulses in *E. coli*.<sup>15</sup> Therefore, we caution that such growth-independent (F)DAA incorporation by L,D-TPases (or D,D-TPases<sup>39</sup>) can obscure the growth-specific FDAA labeling, especially in extended labeling experiments.

The signal in the L,D-TPase deficient strains represents exclusive pentapeptide labeling and a steady-state between (F)DAA incorporation and its removal by D,D-CPases (e.g.; PBP<sub>4Ec</sub>). This pentapeptide labeling could occur either cytoplasmically, via the combined activities of Ddl and MurF, or through the activity of the D,D-TPases. Since deletion (or inhibition) of every available D,D-TPase in a given bacterial species, without killing the cell, is virtually impossible, we elucidated their role(s) in incorporating FDAAs into PG of live *E. coli* and *B. subtilis* cells through the process of elimination. Ddl knockout strains in *B. subtilis* and *E. coli* that also lacked L,D-TPase activity showed (F)DAA labeling comparable to the parent strains with native Ddl activity. The observed labeling, in the absence of Ddl and L,D-TPase activity, provides compelling evidence that D,D-TPases incorporate (F)DAAs into pentapeptides in the PG of these two species *in vivo*. Consistently,  $\beta$ -lactams dramatically reduce *in vivo* (F)DAA incorporation into pentapeptides in these species. Our *in vitro* data also suggest that bacteria may have an intrinsic ability to limit utilization of DAAs other than D-Ala by Ddl and MurF. For example, DdlB<sub>Ec</sub> has a ~10-fold lower specific activity toward EDA relative to D-Ala, suggesting that the cytoplasmic incorporation route may be limited at this point even if (F)DAAs are taken up by the cell. Similarly, MurF<sub>Bs</sub> rejects DA-EDA, the terminally tagged DAAD.

The incorporation mechanism for DAADs appears to be simpler. We, and others, have previously shown that DAADs could complement growth in *E. coli*, *B. subtilis*, *Chlamydia trachomatis*, *Mycobacterium smegmatis*, and even chloroplasts of the moss, *Physcomitrella patens*, when the cytoplasmic DA-DA pools were depleted by DCS and/or by the generation of auxotrophic Ddl mutants.<sup>16,64,66</sup> Our data here are in agreement with this finding: DAADs perform similarly to the endogenous substrate (DA-DA) for dipeptide incorporation *in vitro*.

Collectively, our results imply that (F)DAAs report on the activities of periplasmic D,D-TPases and L,D-TPases, which explains why (F)DAAs label diverse bacteria so effectively. In addition, (F)DAAs do not report on any enzyme activity until the periplasmic biosynthesis of nascent PG is complete (Figure 1a). DAADs, along with a recently reported metabolic glycolabeling strategy, are complementary to FDAAs in that they report on the biosynthesis of nascent PG.<sup>16,49,67</sup>

Finally, we note that many clinically relevant antibiotics are DAAs (e.g., DCS, the  $\beta$ -lactams). Our data reveal that DCS, an important antituberculosis antibiotic, has a previously unrecognized mode of action in addition to its main inhibitory effect on cytoplasmic stages of PG synthesis. Similar to other DAAs, we show that DCS can target diverse TPases in evolutionarily diverse bacteria, including *E. coli*. Like DCS, many  $\beta$ -lactams—widely used and long-standing anti-D,D-TPase drugs—have terminal DAA moieties that confer them improved antibacterial activities relative to their L-amino acid counterparts.<sup>40,49</sup> For example, D-ampicillin (or ampicillin) is up to 5-fold more potent than L-ampicillin, and a synergy between free DAAs and  $\beta$ -lactams has been shown.<sup>57,68</sup> It is tantalizing to think that this synergy points to a DAA-dependent D,D-TPase “activation” leading to an enhanced sensitivity toward natural electrophilic  $\beta$ -lactams. If true, and given that (F)DAAs can selectively target bacteria in live animals,<sup>33</sup> this may provide a promising new avenue for DAA-based antibacterial discovery.

## ■ ASSOCIATED CONTENT

### ■ Supporting Information

The Supporting Information is available free of charge at <https://pubs.acs.org/doi/10.1021/acscchembio.9b00664>.

A complete set of protocols, experimental details, and supplementary figures (PDF)

## ■ AUTHOR INFORMATION

### Corresponding Authors

\*(M.S.V.) E-mail: [mvannieu@indiana.edu](mailto:mvannieu@indiana.edu).

\*(Y.B.) E-mail: [Yves.brun@umontreal.ca](mailto:Yves.brun@umontreal.ca).

### ORCID

David I. Roper: 0000-0003-0009-621X

Michael S. VanNieuwenhze: 0000-0001-6093-5949

### Author Contributions

E.K., A.R., X.M., A.E., G.B., and M.S.V. carried out (F)DAA labeling experiments, including quantitation; E.K. performed microscopy experiments; E.K., A.D.D., and R. R. performed in vitro enzyme experiments with (F)DAAs and DAADs; L.A. and F.C. carried out analysis of products deriving from in vitro (F)DAA exchange; E.B. provided samples of labeled lipid II for in vitro (F)DAA exchange experiments; E.K., D.R., F.C., W.V., Y.V.V., and M.S.V. wrote the manuscript. All authors were involved in the design and execution of this work.

### Funding

This work was supported by Life Sciences Research Foundation Fellowship awarded to E.K. Work in the Vollmer laboratory was supported by a Wellcome Trust Senior Investigator Grant (101824/Z/13/Z). The Brun laboratory was supported by grants from the National Institutes of Health (GM113172, GM122556) and by a Canada 150 Research Chair in Bacterial Cell Biology to Y.B. Work in the VanNieuwenhze laboratory was supported by a Grant from the National Institutes of Health (GM113172).

### Notes

The authors declare no competing financial interest.

## ■ ACKNOWLEDGMENTS

We thank K. Hummels and D. Kearns for the *B. subtilis*  $\Delta$ ddl strain; J.-E. Hugonnet for many of the *E. coli*  $\Delta$ Ldt strains; A. Randich for her help with protein purification. We also thank C. Dowson and A. Lloyd for support of the kinetics studies

involving MurF and DdlB. We also thank P. T. van Benthum for support in the preparation of lipid II derivatives.

## ■ REFERENCES

- (1) Koch, A. L. (2003) Bacterial wall as target for attack: past, present, and future research. *Clin. Microbiol. Rev.* 16, 673–687.
- (2) Lam, H., Oh, D. C., Cava, F., Takacs, C. N., Clardy, J., de Pedro, M. A., and Waldor, M. K. (2009) D-amino acids govern stationary phase cell wall remodeling in bacteria. *Science* 325, 1552–1555.
- (3) Schouten, J. A., Bagga, S., Lloyd, A. J., de Pascale, G., Dowson, C. G., Roper, D. I., and Bugg, T. D. (2006) Fluorescent reagents for in vitro studies of lipid-linked steps of bacterial peptidoglycan biosynthesis: derivatives of UDPMurNAc-pentapeptide containing D-cysteine at position 4 or 5. *Mol. Biosyst.* 2, 484–491.
- (4) Caminero, J. A., Sotgiu, G., Zumla, A., and Migliori, G. B. (2010) Best drug treatment for multidrug-resistant and extensively drug-resistant tuberculosis. *Lancet Infect. Dis.* 10, 621–629.
- (5) Boman, H. G., and Eriksson, K. G. (1963) Penicillin-induced lysis in *Escherichia coli*. *J. Gen. Microbiol.* 31, 339–352.
- (6) Neuhaus, F. C. D-Cycloserine and O-carbamyl-D-serine. In *Mechanism of Action*; Gottlieb, D., and Shaw, P. D., Eds.; Springer: Berlin, Heidelberg, 1967; pp 40–83.
- (7) Tsuruoka, T., Tamura, A., Miyata, A., Takei, T., Inouye, S., and Matsubashi, M. (1985) Second lytic target of beta-lactam compounds that have a terminal D-amino acid residue. *Eur. J. Biochem.* 151, 209–216.
- (8) de Pedro, M. A., and Cava, F. (2015) Structural constraints and dynamics of bacterial cell wall architecture. *Front. Microbiol.* 6, 449.
- (9) McKenna, M. (2013) Antibiotic resistance: the last resort. *Nature* 499, 394–396.
- (10) Fura, J. M., Kearns, D., and Pires, M. M. (2015) D-Amino acid probes for penicillin binding protein-based bacterial surface labeling. *J. Biol. Chem.* 290, 30540–30550.
- (11) Hsu, Y.-P., Meng, X., and VanNieuwenhze, M. S. (2016) Methods for visualization of peptidoglycan biosynthesis. *Methods Microbiol.* 43, 3–48.
- (12) Radkov, A. D., Hsu, Y.-P., Booher, G., and VanNieuwenhze, M. S. (2018) Imaging bacterial cell wall biosynthesis. *Annu. Rev. Biochem.* 87, 991–1014.
- (13) Hsu, Y.-P., Hall, E., Booher, G., Murphy, B., Radkov, A. D., Yablonowski, J., Mulcahey, C., Alvarez, L., Cava, F., Brun, Y. V., Kuru, E., and VanNieuwenhze, M. S. (2019) Fluorogenic D-amino acids enable real-time monitoring of peptidoglycan biosynthesis and high-throughput transpeptidation assays. *Nat. Chem.* 11, 335–341.
- (14) Hsu, Y.-P., Rittichier, J., Kuru, E., Yablonowski, J., Pasciak, E., Tekkam, S., Hall, E., Murphy, B., Lee, T. K., Garner, E. C., Huang, K. C., Brun, Y. V., and VanNieuwenhze, M. S. (2017) Full color palette of fluorescent D-amino acids for in situ labeling of bacterial cell walls. *Chem. Sci.* 8, 6313–6321.
- (15) Kuru, E., Hughes, H. V., Brown, P. J., Hall, E., Tekkam, S., Cava, F., de Pedro, M. A., Brun, Y. V., and VanNieuwenhze, M. S. (2012) In situ probing of newly synthesized peptidoglycan in live bacteria with fluorescent D-amino acids. *Angew. Chem., Int. Ed.* 51, 12519–12523.
- (16) Liechti, G. W., Kuru, E., Hall, E., Kalinda, A., Brun, Y. V., VanNieuwenhze, M., and Maurelli, A. T. (2014) A new metabolic cell-wall labelling method reveals peptidoglycan in *Chlamydia trachomatis*. *Nature* 506, 507–510.
- (17) Qiao, Y., Lebar, M. D., Schirner, K., Schaefer, K., Tsukamoto, H., Kahne, D., and Walker, S. (2014) Detection of lipid-linked peptidoglycan precursors by exploiting an unexpected transpeptidase reaction. *J. Am. Chem. Soc.* 136, 14678–14681.
- (18) Siegrist, M. S., Whiteside, S., Jewett, J. C., Aditham, A., Cava, F., and Bertozzi, C. R. (2013) (D)-Amino acid chemical reporters reveal peptidoglycan dynamics of an intracellular pathogen. *ACS Chem. Biol.* 8, 500–505.
- (19) Atwal, S., Giengkam, S., VanNieuwenhze, M., and Salje, J. (2016) Live imaging of the genetically intractable obligate intra-

cellular bacteria *Orientia tsutsugamushi* using a panel of fluorescent dyes. *J. Microbiol. Methods* 130, 169–176.

(20) Baranowski, C., Welsh, M. A., Sham, L.-T., Eskandarian, H. A., Lim, H. C., Kieser, K. J., Wagner, J. C., McKinney, J. D., Fantner, G. E., Ioerger, T. R., Walker, S., Bernhardt, T. G., Rubin, E. J., and Rego, E. H. (2018) Maturing *Mycobacterium smegmatis* peptidoglycan requires non-canonical crosslinks to maintain shape. *eLife* 7, No. e37516.

(21) Bartlett, T. M., Bratton, B. P., Miguel, A., Duvshani, A., Sheng, Y., Martin, N. R., Nguyen, J. P., Persat, A., Desmarais, S. M., VanNieuwenhze, M. S., Huang, K. C., Zhu, J., Shaevitz, J. W., and Gitai, Z. (2017) A periplasmic polymer curves *Vibrio cholerae* and promotes pathogenesis. *Cell* 168, 172–185.

(22) Berge, M. J., Mercy, C., Mortier-Barriere, I., VanNieuwenhze, M. S., Brun, Y. V., Grangeasse, C., Polard, P., and Campo, N. (2017) A programmed cell division delay preserves genome integrity during natural genetic transformation in *Streptococcus pneumoniae*. *Nat. Commun.* 8, 1621.

(23) Bisson-Filho, A. W., Hsu, Y. P., Squyres, G. R., Kuru, E., Wu, F., Jukes, C., Sun, Y., Dekker, C., Holden, S., VanNieuwenhze, M. S., Brun, Y. V., and Garner, E. C. (2017) Treadmilling by FtsZ filaments drives peptidoglycan synthesis and bacterial cell division. *Science* 355, 739–743.

(24) Boersma, M. J., Kuru, E., Rittichier, J. T., VanNieuwenhze, M. S., Brun, Y. V., and Winkler, M. E. (2015) Minimal peptidoglycan (PG) turnover in wild-type and PG Hydrolase and cell division mutants of *Streptococcus pneumoniae* D39 growing planktonically and in host-relevant biofilms. *J. Bacteriol.* 197, 3472–3485.

(25) Bonnet, J., Durmort, C., Jacq, M., Mortier-Barriere, I., Campo, N., VanNieuwenhze, M. S., Brun, Y. V., Arthaud, C., Gallet, B., Moriscot, C., Morlot, C., Vernet, T., and Di Guilmi, A. M. (2017) Peptidoglycan O-acetylation is functionally related to cell wall biosynthesis and cell division in *Streptococcus pneumoniae*. *Mol. Microbiol.* 106, 832–846.

(26) Botella, H., Yang, G., Ouerfelli, O., Ehrst, S., Nathan, C. F., and Vaubourgeix, J. (2017) Distinct spatiotemporal dynamics of peptidoglycan synthesis between *Mycobacterium smegmatis* and *Mycobacterium tuberculosis*. *mBio* 8, 301183–17.

(27) Cameron, T. A., Anderson-Furgeson, J., Zupan, J. R., Zik, J. J., and Zambryski, P. C. (2014) Peptidoglycan synthesis machinery in *Agrobacterium tumefaciens* during unipolar growth and cell division. *mBio* 5, No. e01219–14.

(28) Cuenca, M., Pfister, S. P., Buschor, S., Bayramova, F., Hernandez, S. B., Cava, F., Kuru, E., Van Nieuwenhze, M. S., Brun, Y. V., Coelho, F. M., and Hapfelmeier, S. (2016) D-Alanine-controlled transient intestinal mono-colonization with non-laboratory-adapted commensal. *PLoS One* 11, No. e0151872.

(29) de Pedro, M. A., Quintela, J. C., Holtje, J. V., and Schwarz, H. (1997) Murein segregation in *Escherichia coli*. *J. Bacteriol.* 179, 2823–2834.

(30) Faure, L., Fiche, J.-B., Espinosa, L., Ducret, A., Anantharaman, V., Luciano, J., Lhospice, S., Islam, S., Tréguier, J., Sotes, M., Kuru, E., VanNieuwenhze, M., Brun, Y., Theodoly, O., Aravind, L., Nollmann, M., and Mignot, T. (2016) The mechanism of force transmission at bacterial focal adhesion complexes. *Nature* 539, 530–535.

(31) Fleurie, A., Lesterlin, C., Manuse, S., Zhao, C., Cluzel, C., Lavergne, J.-P., Franz-Wachtel, M., Macek, B., Combet, C., Kuru, E., VanNieuwenhze, M. S., Brun, Y. V., Sherratt, D., and Grangeasse, C. (2014) MapZ beacons the division sites and positions FtsZ-rings in *Streptococcus pneumoniae*. *Nature* 516, 259–262.

(32) Fleurie, A., Manuse, S., Zhao, C., Campo, N., Cluzel, C., Lavergne, J.-P., Freton, C., Combet, C., Guiral, S., Soufi, B., Macek, B., Kuru, E., VanNieuwenhze, M. S., Brun, Y. V., Di Guilmi, A.-M., Claverys, J.-P., Galinier, A., and Grangeasse, C. (2014) Interplay of the serine/threonine kinase StkP and the paralogs DivIVA and GpsB in pneumococcal cell elongation and division. *PLoS Genet.* 10, No. e1004275.

(33) Hudak, J. E., Alvarez, D., Skelly, A., von Andrian, U. H., and Kasper, D. L. (2017) Illuminating vital surface molecules of symbionts in health and disease. *Nat. Microbiol.* 2, 17099.

(34) Hugonnet, J.-E., Mengin-Lecreux, D., Monton, A., den Blaauwen, T., Carbonnelle, E., Veckerle, C., Brun, Y. V., Van Nieuwenhze, M., Bouchier, C., Tu, K., Rice, L. B., and Arthur, M. (2016) Factors essential for L, D-transpeptidase-mediated peptidoglycan cross-linking and  $\beta$ -lactam resistance in *Escherichia coli*. *eLife* 5, 319469.

(35) Jutras, B. L., Scott, M., Parry, B., Biboy, J., Gray, J., Vollmer, W., and Jacobs-Wagner, C. (2016) Lyme disease and relapsing fever *Borrelia* elongate through zones of peptidoglycan synthesis that mark division sites of daughter cells. *Proc. Natl. Acad. Sci. U. S. A.* 113, 9162–9170.

(36) Kuru, E., Lambert, C., Rittichier, J., Till, R., Ducret, A., Derouaux, A., Gray, J., Biboy, J., Vollmer, W., VanNieuwenhze, M., Brun, Y. V., and Sockett, R. E. (2017) Fluorescent D-amino-acids reveal bi-cellular cell wall modifications important for *Bdellovibrio bacteriovorus* predation. *Nat. Microbiol.* 2, 1648–1657.

(37) Liechti, G., Kuru, E., Packiam, M., Hsu, Y. P., Tekkam, S., Hall, E., Rittichier, J. T., VanNieuwenhze, M., Brun, Y. V., and Maurelli, A. T. (2016) Pathogenic *Chlamydia* lack a classical sacculus but synthesize a narrow, mid-cell peptidoglycan ring, regulated by MreB, for cell division. *PLoS Pathog.* 12, No. e1005590.

(38) Manuse, S., Jean, N. L., Guinot, M., Lavergne, J.-P., Laguri, C., Bougault, C. M., VanNieuwenhze, M. S., Grangeasse, C., and Simorre, J.-P. (2016) Structure-function analysis of the extracellular domain of the pneumococcal cell division site positioning protein MapZ. *Nat. Commun.* 7, 12071.

(39) Monteiro, J. M., Fernandes, P. B., Vaz, F., Pereira, A. R., Tavares, A. C., Ferreira, M. T., Pereira, P. M., Veiga, H., Kuru, E., VanNieuwenhze, M. S., Brun, Y. V., Filipe, S. R., and Pinho, M. G. (2015) Cell shape dynamics during the staphylococcal cell cycle. *Nat. Commun.* 6, 8055.

(40) Monteiro, J. M., Pereira, A. R., Reichmann, N. T., Saraiva, B. M., Fernandes, P. B., Veiga, H., Tavares, A. C., Santos, M., Ferreira, M. T., Macario, V., VanNieuwenhze, M. S., Filipe, S. R., and Pinho, M. G. (2018) Peptidoglycan synthesis drives an FtsZ-treadmilling-independent step of cytokinesis. *Nature* 554, 528–532.

(41) Montón Silva, A., Otten, C., Biboy, J., Breukink, E., VanNieuwenhze, M., Vollmer, W., and den Blaauwen, T. (2018) The fluorescent D-amino acid NADA as a tool to study the conditional activity of transpeptidases in *Escherichia coli*. *Front. Microbiol.* 9, 2101.

(42) Jacq, M., Arthaud, C., Manuse, S., Mercy, C., Bellard, L., Peters, K., Gallet, B., Galindo, J., Doan, T., Vollmer, W., Brun, Y. V., VanNieuwenhze, M. S., Di Guilmi, A. M., Vernet, T., Grangeasse, C., and Morlot, C. (2018) The cell wall hydrolase Pmp23 safeguards the division ring in *Streptococcus pneumoniae*. *Sci. Rep.* 8, 7591.

(43) Pazos, M., Peters, K., Casanova, M., Palacios, P., VanNieuwenhze, M. S., Breukink, E., Vicente, M., and Vollmer, W. (2018) Z-ring membrane anchors associate with cell wall synthases to initiate bacterial cell division. *Nat. Commun.* 9, 5090.

(44) Pende, N., Wang, J., Weber, P. M., Verheul, J., Kuru, E., Rittmann, S. K. R., Leisch, N., VanNieuwenhze, M. S., Brun, Y. V., den Blaauwen, T., and Bulgheresi, S. (2018) Host-polarized cell growth in animal Symbionts. *Curr. Biol.* 28, 1039–1051 e5.

(45) Peters, K., Pazos, M., Edoo, Z., Hugonnet, J.-E., Martorana, A. M., Polissi, A., VanNieuwenhze, M. S., Arthur, M., and Vollmer, W. (2018) Copper inhibits peptidoglycan L, D-transpeptidase suppressing beta-lactam resistance due to by-pass of penicillin-binding proteins. *Proc. Natl. Acad. Sci. U. S. A.* 115, 10786–10791.

(46) Pilhofer, M., Aistleitner, K., Biboy, J., Gray, J., Kuru, E., Hall, E., Brun, Y. V., VanNieuwenhze, M. S., Vollmer, W., Horn, M., and Jensen, G. J. (2013) Discovery of chlamydial peptidoglycan reveals bacteria with murein sacculi but without FtsZ. *Nat. Commun.* 4, 2856.

(47) Lonergan, Z. R., Nairn, B. L., Wang, J., Hsu, Y.-P., Hesse, L. E., Beavers, W. N., Chazin, W. J., Trinidad, J. C., VanNieuwenhze, M. S., Giedroc, D. P., and Skaar, E. P. (2019) An *Acinetobacter baumannii*

zinc-regulated peptidase maintains cell wall integrity during immune-mediated nutrient sequestration. *Cell Rep.* 26, P2009–2018 e6.

(48) Reichmann, N. T., Tavares, A. C., Saraiva, B. M., Jousselin, A., Reed, P., Pereira, A. R., Monteiro, J. M., Sobral, R. G., VanNieuwenhze, M. S., Fernandes, F., and Pinho, M. G. (2019) SEDS-bPBP pairs direct lateral and septal peptidoglycan in *Staphylococcus aureus*. *Nat. Microbiol.* 4, 1368–1377.

(49) Sarkar, S., Libby, E. A., Pidgeon, S. E., Dworkin, J., and Pires, M. M. (2016) In vivo probe of lipid II-interacting proteins. *Angew. Chem., Int. Ed.* 55, 8401–8404.

(50) Tocheva, E. I., López-Garrido, J., Hughes, H. V., Fredlund, J., Kuru, E., VanNieuwenhze, M. S., Brun, Y. V., Pogliano, K., and Jensen, G. J. (2013) Peptidoglycan transformations during *Bacillus subtilis* sporulation. *Mol. Microbiol.* 88, 673–686.

(51) Tsui, H.-C. T., Boersma, M. J., Vella, S. A., Kocaoglu, O., Kuru, E., Peceny, J. K., Carlson, E. E., VanNieuwenhze, M. S., Brun, Y. V., Shaw, S. L., and Winkler, M. E. (2014) Pbp2x localizes separately from Pbp2b and other peptidoglycan synthesis proteins during later stages of cell division of *Streptococcus pneumoniae* D39. *Mol. Microbiol.* 94, 21–40.

(52) Yang, X., Lyu, Z., Miguel, A., McQuillen, R., Huang, K. C., and Xiao, J. (2017) GTPase activity-coupled treadmilling of the bacterial tubulin FtsZ organizes septal cell wall synthesis. *Science* 355, 744–747.

(53) Pereira, A. R., Hsin, J., Krol, E., Tavares, A. C., Flores, P., Hoiczky, E., Ng, N., Dajkovic, A., Brun, Y. V., VanNieuwenhze, M. S., Roemer, T., Carballido-Lopez, R., Scheffers, D.-J., Huang, K. C., and Pinho, M. G. (2016) FtsZ-dependent elongation of a coccoid bacterium. *mBio* 7, No. e00908–16.

(54) Atrih, A., Bacher, G., Allmaier, G., Williamson, M. P., and Foster, S. J. (1999) Analysis of peptidoglycan structure from vegetative cells of *Bacillus subtilis* 168 and role of PBP 5 in peptidoglycan maturation. *Microbiology* 181, 3956–3966.

(55) Morales Angeles, D., Liu, Y., Hartman, A. M., Borisova, M., de Sousa Borges, A., de Kok, N., Beilharz, K., Veening, J. W., Mayer, C., Hirsch, A. K., and Scheffers, D. J. (2017) Pentapeptide-rich peptidoglycan at the *Bacillus subtilis* cell-division site. *Mol. Microbiol.* 104, 319–333.

(56) Cava, F., de Pedro, M. A., Lam, H., Davis, B. M., and Waldor, M. K. (2011) Distinct pathways for modification of the bacterial cell wall by non-canonical D-amino acids. *EMBO J.* 30, 3442–3453.

(57) Batson, S., de Chiara, C., Majce, V., Lloyd, A. J., Gobec, S., Rea, D., Fülöp, V., Thoroughgood, C. W., Simmons, K. J., Dowson, C. G., Fishwick, C. W. G., de Carvalho, L. P. S., and Roper, D. I. (2017) Inhibition of D-Ala:D-Ala ligase through a phosphorylated form of the antibiotic D-cycloserine. *Nat. Commun.* 8, 1939.

(58) Magnet, S., Dubost, L., Marie, A., Arthur, M., and Gutmann, L. (2008) Identification of the L, D-transpeptidases for peptidoglycan cross-linking in *Escherichia coli*. *J. Bacteriol.* 190, 4782–4785.

(59) Caparrós, M., Pisabarro, A. G., and de Pedro, M. A. (1992) Effect of D-amino acids on structure and synthesis of peptidoglycan in *Escherichia coli*. *J. Bacteriol.* 174, 5549–5559.

(60) Peters, K., Kannan, S., Rao, V. A., Biboy, J., Vollmer, D., Erickson, S. W., Lewis, R. J., Young, K. D., and Vollmer, W. (2016) The redundancy of peptidoglycan carboxypeptidases ensures robust cell shape maintenance in *Escherichia coli*. *mBio* 7, No. e00819–16.

(61) Azzolina, B. A., Yuan, X., Anderson, M. S., and El-Sherbeini, M. (2001) The cell wall and cell division gene cluster in the Mra operon of *Pseudomonas aeruginosa*: cloning, production, and purification of active enzymes. *Protein Expression Purif.* 21, 393–400.

(62) Lupoli, T. J., Tsukamoto, H., Doud, E. H., Wang, T. S., Walker, S., and Kahne, D. (2011) Transpeptidase-mediated incorporation of D-amino acids into bacterial peptidoglycan. *J. Am. Chem. Soc.* 133, 10748–10751.

(63) Cava, F., Lam, H., de Pedro, M. A., and Waldor, M. K. (2011) Emerging knowledge of regulatory roles of D-amino acids in bacteria. *Cell. Mol. Life Sci.* 68, 817–831.

(64) Hirano, T., Tanidokoro, K., Shimizu, Y., Kawarabayasi, Y., Ohshima, T., Sato, M., Tadano, S., Ishikawa, H., Takio, S., Takechi, K., and Takano, H. (2016) Moss chloroplasts are surrounded by a

peptidoglycan wall containing D-amino acids. *Plant Cell* 28, 1521–1532.

(65) Peteroy, M., Severin, A., Zhao, F., Rosner, D., Lopatin, U., Scherman, H., Belanger, A., Harvey, B., Hatfull, G. F., Brennan, P. J., and Connell, N. D. (2000) Characterization of a *Mycobacterium smegmatis* mutant that is simultaneously resistant to D-cycloserine and vancomycin. *Antimicrob. Agents Chemother.* 44, 1701–1704.

(66) Garcia-Heredia, A., Pohane, A. A., Melzer, E. S., Carr, C. R., Fiolek, T. J., Rundell, S. R., Lim, H. C., Wagner, J. C., Morita, Y. S., Swarts, B. M., and Siegrist, M. S. (2018) Peptidoglycan precursor synthesis along the sidewall of pole-growing mycobacteria. *eLife* 7, No. e37243.

(67) Liang, H., DeMeester, K. E., Hou, C. W., Parent, M. A., Caplan, J. L., and Grimes, C. L. (2017) Metabolic labelling of the carbohydrate core in bacterial peptidoglycan and its applications. *Nat. Commun.* 8, 15015.

(68) Hutt, A. J., and O'Grady, J. (1996) Drug chirality: a consideration of the significance of the stereochemistry of antimicrobial agents. *J. Antimicrob. Chemother.* 37, 7–32.