



Published in final edited form as:

Nat Neurosci. 2019 September ; 22(9): 1394–1401. doi:10.1038/s41593-019-0447-7.

Genome-wide Association Study of Posttraumatic Stress Disorder (PTSD) Re-Experiencing Symptoms in >165,000 US Veterans

J. Gelernter, MD^{1,2,*}, N. Sun, PhD^{3,4}, R. Polimanti, PhD^{1,2}, R. Pietrzak, PhD^{1,2}, Daniel F Levey^{1,2}, J. Bryois, PhD⁵, Q. Lu, PhD⁴, Y Hu, PhD⁴, B. Li, MS⁴, K. Radhakrishnan, MD, PhD, MPH^{3,5}, M. Aslan, PhD^{3,7}, K.H. Cheung, PhD^{3,8}, Y. Li, MS^{3,9}, N. Rajeevan, PhD^{3,9}, F. Sayward, PhD^{3,9}, K. Harrington, PhD^{10,11}, Q. Chen, PhD^{3,4}, K. Cho, PhD^{10,12}, S. Pyarajan, PhD^{10,12}, P.F. Sullivan, MD^{6,13}, R. Quaden, PhD¹⁰, Y. Shi, PhD¹⁰, H. Hunter-Zinck, PhD¹⁰, J. M. Gaziano, MD^{10,12}, J. Concato, MD^{3,7}, H. Zhao, PhD^{3,4}, M.B. Stein, MD, MPH^{14,15,*}

Department of Veterans Affairs Cooperative Studies Program (#575B) and Million Veteran Program

¹Psychiatry Service, VA Connecticut Healthcare System, West Haven, CT

Terms of use and reuse: academic research for non-commercial purposes, see here for full terms. <https://www.nature.com/authors/policies/license.html#AAMtermsV1>

Correspondence: Joel Gelernter, Yale Univ. School of Medicine, VA 116A2, VA CT Healthcare Center, West Haven, CT 06525; OR Murray B Stein, University of California San Diego, 9500 Gilman Drive, Mailcode 0855, La Jolla, CA 92093-0855.

*Equal contribution

Author Contributions

Genotyping Effort

S. Pyarajan, Y. Shi, H. Hunter-Zinck

Analysis Team

N. Sun, J. Bryois, Q. Lu, Y Hu, B. Li, R. Polimanti, Q. Chen, D. Levey

CSP575B team: database, phenotype, and analytic efforts

K. Radhakrishnan, M. Aslan, K.H. Cheung, Y. Li, N. Rajeevan, F. Sayward, K. Harrington, K. Cho, R. Quaden, R. Pietrzak

MVP Leadership: Overall MVP Design and Supervision

J. M. Gaziano, J. Concato

Analysis Design

R. Polimanti, P.F. Sullivan, H. Zhao, J. Gelernter, M. Stein

Project Design, Project Leadership

J. Gelernter, J. Concato, M.B. Stein

Writing Leads

J. Gelernter, M.B. Stein

Publisher's Disclaimer: This Author Accepted Manuscript is a PDF file of an unedited peer-reviewed manuscript that has been accepted for publication but has not been copyedited or corrected. The official version of record that is published in the journal is kept up to date and so may therefore differ from this version.

Publisher's Disclaimer: Disclaimer

The views expressed in this article are those of the authors and do not necessarily reflect the position or policy of the Department of Veterans Affairs or the United States government.

Disclosures

Dr. Gelernter is named as co-inventor on PCT patent application #15/878,640 entitled: "Genotype-guided dosing of opioid agonists," filed January 24, 2018.

Dr. Stein has in the past three years been a consultant for Actelion, Aptinyx, Bionomics, Dart Neuroscience, Healthcare Management Technologies, Janssen, Jazz Pharmaceuticals, Neurocrine Biosciences, Oxeia Biopharmaceuticals, Pfizer, and Resilience Therapeutics. Dr. Stein owns founders shares and stock options in Resilience Therapeutics and has stock options in Oxeia Biopharmaceuticals.

Data Availability

The GWAS summary statistics generated during and/or analyzed during the current study are available via dbGAP; the dbGaP accession assigned to the Million Veteran Program is phs001672.v1.p. The website is: https://www.ncbi.nlm.nih.gov/projects/gap/cgi-bin/study.cgi?study_id=phs001672.v1.p1 Additionally, the data that support the findings of this study are available from the corresponding authors upon request.

²Department of Psychiatry, Yale University School of Medicine, New Haven, CT

³VA Clinical Epidemiology Research Center (CERC), VA Connecticut Healthcare System, West Haven, CT

⁴Department of Biostatistics, Yale University School of Public Health, New Haven CT

⁵College of Medicine, University of Kentucky, Lexington, KY

⁶Department of Medical Epidemiology and Biostatistics, Karolinska Institutet, Stockholm, Sweden

⁷Department of Medicine, Yale University School of Medicine, New Haven, CT

⁸Department of Emergency Medicine, Yale University School of Medicine, New Haven, CT

⁹Yale Center for Medical Informatics, Yale University School of Medicine, New Haven, CT

¹⁰Massachusetts Veterans Epidemiology Research and Information Center (MAVERIC), VA Boston Healthcare System, Boston, MA

¹¹Department of Psychiatry, Boston University School of Medicine, Boston, MA

¹²Department of Medicine, Brigham and Women's Hospital, Harvard Medical School, Boston, MA

¹³Departments of Genetics and Psychiatry, University of North Carolina, Chapel Hill, NC

¹⁴Psychiatry Service, VA San Diego Healthcare System, San Diego, CA

¹⁵Departments of Psychiatry and Family Medicine & Public Health, University of California San Diego, La Jolla, CA

Abstract

Posttraumatic stress disorder (PTSD) is a major problem among military veterans and civilians alike, yet its pathophysiology remains poorly understood. We used genomewide association study (GWAS) and bioinformatic analyses, including 146,660 European-Americans (EAs) and 19,983 African-Americans (AAs) in the US Million Veteran Program, to identify genetic risk factors relevant to Intrusive reexperiencing of trauma -- the most characteristic symptom cluster of PTSD. In EAs, 8 distinct significant regions were identified. Three regions had $P < 5 \times 10^{-10}$ -- *CAMKV*; chromosome 17 closest to *KANSL1* but within a large high-LD region that also includes *CRHR1*; and *TCF4*. Associations were enriched with respect to the transcriptomic profiles of striatal medium spiny neurons. No significant associations were observed in the AA part of the sample. Results in EAs were replicated in UK Biobank. These results provide new insights into the biology of PTSD in a well-powered GWAS.

Introduction

Posttraumatic stress disorder (PTSD) is a worldwide public health problem and of particular concern to the US military. While PTSD can be attributable to a range of traumatic events, the nature and intensity of traumatic events experienced by some military personnel result in particularly high prevalence among US military veterans¹. Published PTSD genome-wide association studies (GWAS) have identified genomewide-significant risk loci²⁻⁴; however these studies have tended to be small and underpowered for a trait as complex as PTSD. The

largest to date was a meta-analysis undertaken by the Psychiatric Genomics Consortium (PGC)⁵. While there have been promising possible gene identifications, there are none yet that are both significant and replicated.

The PTSD Checklist (PCL) is a widely used 17-item self-report measure of past-month PTSD symptoms⁶. It collects information relevant to the three (according to DSM-IV) PTSD symptom clusters: reexperiencing, avoidance, and hyperarousal. Of these, hyperarousal and avoidance are common to many anxiety-related disorders, but re-experiencing symptoms (e.g., nightmares and flashbacks about a traumatic event) are largely unique to PTSD and are core to the diagnosis.

To increase power for risk variant identification, the two main strategies are to increase sample size, and to increase the informativity of the phenotype. In the present study, we did both: we included over 165,000 US Million Veteran Program (MVP) participants, and we used a quantitative phenotype for reexperiencing.

Results

In the EAs, (137,044 males and 9,616 females), $\text{SNP-}h^2=0.067\pm 0.005$ (SE) ($p = 3.02\times 10^{-41}$). Estimated heritability was similar in males only ($h^2 = 0.066\pm 0.005$, $p=4.38\times 10^{-40}$). In the AAs, $\text{SNP-}h^2=0.048\pm 0.039$ ($p=0.109$).

Due to the large sample size of the EA cohort investigated ($N=146,660$), we observed a consistent polygenic signal in the summary association data ($\lambda=1.20$), with negligible inflation observed (LD score regression intercept= 1.05 ± 0.01) due to possible confounding factors, including population stratification and the distribution of the reexperiencing items in the cohort investigated (Table S1). Eight distinct common-variant GWS regions were identified in this ancestry group (Table 1 and Figure 1), three of these with significance $p<5\times 10^{10}$. These latter three regions map to chromosome 3, lead SNP rs2777888 ($\text{beta}=0.111$, $p=2.1\times 10^{-11}$), gene *CAMKV* (CaM Kinase Like Vesicle Associated); chromosome 17, lead SNP rs2532252 ($\text{beta}=0.122$, $p=4.5\times 10^{-10}$), closest to *KANSL1* but within a long high-LD region that also includes *CRHR1* (corticotropin releasing hormone receptor 1); and chromosome 18, lead SNP rs2123392 ($\text{beta}=0.113$, $p=5.4\times 10^{-11}$), at *TCF4* (Transcription Factor 4). Other significant associations were observed at *KCNIP4* (Potassium Voltage-Gated Channel Interacting Protein 4, rs4697248: $\text{beta}=0.105$, $p=3.73\times 10^{-9}$), *HSD17B11* (Hydroxysteroid 17-Beta Dehydrogenase 11, rs7688962: $\text{beta}=-0.126$, $p=1.34\times 10^{-8}$), *MAD1L1* (MAD1 Mitotic Arrest Deficient Like 1, rs10235664: $\text{beta}=-0.113$, $p = 3.09\times 10^{-9}$), *SRPK2* (SRSF Protein Kinase 2, rs67529088: $\text{beta}=-0.09$, $p=3.32\times 10^{-8}$), and *LINC01360* (Long Intergenic Non-Protein Coding RNA 1360, an RNA Gene, rs7519147: $\text{beta}=-0.101$, $p=1.29\times 10^{-9}$). The 10,000 statistically strongest associations for EAs and AAs are presented in Tables S3 and S4.

There were no GWS associations in the smaller AA sample (Figure S2). The meta-analysis of the EA and AA results showed mostly similar results, with the exception of regions on chromosome 1 and chromosome 17, which improved in significance. In other regions, significance was similar to what was seen for EAs-only, but the position of the lead SNP

sometimes shifted, and two regions were not GWS in the transpopulation meta-analysis (*SPRK2*, *KCNIP4*) (Table S5). The most noteworthy difference in the transpopulation meta-analysis was seen on chromosome 17 (Figure 2), where the association signal improved by over an order of magnitude and shifted from *KANSL1* rs2532252 ($p=4.5\times 10^{-10}$) to *CRHR1* rs1724409 ($p=3.55\times 10^{-11}$). Regional Manhattan plots for significant regions in EAs, AAs, and meta-analysis are presented in Figure S3.

To explore further the functional role of the GWS variants identified, we tested association of these loci with gene expression (cis-eQTL: variants located ± 1 Mb from the transcription site start of the gene tested) considering the 13 tissues related to the central nervous system (CNS) available in GTEx V7⁷. After applying a FDR 5% correction accounting for the number of variants, genes, and tissues tested, we observed 257 significant eQTLs (of 2,514 tests) conducted with respect to the GWS loci observed in the EUR samples (Supplemental Table 6). The eight GWS variants observed in EUR are associated with the expression of 52 genes, of which 27 are protein-coding. However, most of the eQTLs relate to two variants: rs2532252 on chromosome 17 is associated with the expression of 30 different genes; rs2777888 on chromosome 3 is associated with the expression of 14 different genes. Figure 3 shows the strength of the eQTLs identified with respect to protein-coding genes across the 13 brain tissues investigated. Due to the strong LD with the loci identified in the EUR analysis, similar eQTL results were observed with respect to the variants identified in the trans-ancestry meta-analysis.

Gene-based analysis

There were 30 GWS gene-based associations detected using MAGMA (Figure 4; Supplemental Table S7). The strongest significance was observed for *TRAIP* ($p = 6.64\times 10^{-12}$) on chromosome 3 (there was no significant SNP association mapped to this locus). An additional 14 genes reached GWS in the same chromosomal region. A second large cluster of significant gene-based associations was observed on chromosome 17, where *CRHR1* reached GWS ($p = 3.44\times 10^{-8}$) together with another 10 genes located in the same chromosomal region.

Genetic correlations

LDSC revealed significant genetic correlations (FDR $q<0.05$) with 400 of nearly 1800 traits (Supplementary Table S8). The most significant of these were poor overall-health rating (UKB, $r_g=0.55$, $p=9.71\times 10^{-57}$; 4-category scale, from 1-Excellent to 4-Poor) and mood swings (UKB, $r_g = 0.66$, $p=1.07\times 10^{-56}$). Among the other most interesting statistically significant genetic correlations were with neuroticism (UKB, $r_g=0.56$, $p=1.28\times 10^{-44}$), having seen a doctor (GP) for nerves, anxiety, tension or depression (UKB, $r_g = 0.58$, $p=1.54\times 10^{-41}$), years of education (LDHub, $r = -0.42$, $p=9.32\times 10^{-32}$), “loneliness, isolation” (UKB, $r_g=0.56$, $p=6.63\times 10^{-31}$), depressive symptoms (LDHub, $r_g = 0.64$, $p=1.00\times 10^{-29}$), current smoker (UKB, $r_g = 0.43$, $p=3.49\times 10^{-29}$), intelligence (LDHub, $r_g=-0.53$, $p=1.20\times 10^{-28}$), alcohol intake frequency (UKB, $r_g = 0.37$, $p=2.70\times 10^{-22}$), schizophrenia (LD Hub – PGC, $r_g=0.25$, $p=5.17\times 10^{-12}$), insomnia (LDHub, $r_g=0.38$, $p=9.49\times 10^{-10}$), risk taking (UKB, $r_g=0.25$, $p=2.59\times 10^{-9}$), and hypertension (UKB, $r_g=0.21$, $p=3.17\times 10^{-09}$).

Tissue and Cell Type Enrichment

We tested whether genetic associations with REX were enriched with respect to the transcriptomic profiles of human tissues⁸ and mouse brain cell types⁹. At the tissue level, we found the transcriptomic profiles related to brain tissues were associated with REX (Figure 5a). The most significant association was observed with respect to the brain cortex, followed by hypothalamus, amygdala, hippocampus and the basal ganglia. At the cell type level, we found the transcriptomic profile of medium spiny neurons (located in the striatum) to be associated with REX using two different methods (Figure 5b), MAGMA and LDSC, while striatal interneurons were implicated only by MAGMA. A more detailed analysis using narrowly-defined cell types found gene expression of medium spiny neurons and one type of cortical interneuron associated with REX LDSC, while MAGMA implicated two types of hypothalamic neurons, dopaminergic neurons from the ventral tegmental area and striatal interneurons (Figure S4). We observed little association evidence with respect to non-neuronal cell types with REX. Pathway analysis are reported in the Supplement - Table S9.

Replication

Although the UKB data are derived from a single item, we observed very strong genetic correlation between MVP EA and UK Biobank REX phenotypes ($r_g=0.88$, $SE=0.07$, $p=8.47 \times 10^{-34}$). Considering our eight GWS results in EA subjects, we observed nominal replication for five loci – *TCF4* rs2123392 ($\beta=0.011$, $p=3.62 \times 10^{-4}$), *KANSL1* rs2532252 ($\beta=0.010$, $p=0.007$), *HSD17B11* rs7688962 ($\beta=-0.011$, $p=0.012$), *SRPK2* rs67529088 ($\beta=-0.007$, $p=0.03$), and *CAMKV* rs2777888 ($\beta=0.007$, $p=0.034$). Applying a more stringent Bonferroni adjustment ($p<0.006$), *TCF4* rs2123392 survived the multiple testing correction. However, all GWS variants signals have the same direction of effect in MVP and UKB analyses (Table 1). The probability to observe concordant direction of all eight MVP-identified loci in UKB GWAS by chance is 0.4%. The whole-genome polygenic risk score (PRS) based on the MVP REX data can explain up to 0.36% ($p=7.53 \times 10^{-95}$; Figure S5) of the variance in the UKB REX item. The relatively low REX variance explained by MVP PRS in the UK Biobank cohort is consistent with the limited SNP heritability estimates for MVP and UKB REX phenotypes, 6.7% and 4.3% respectively. Since the MVP trans-ancestry meta-analysis is mainly driven by the EA sample ($N=146,660$) with a small contribution by AAs ($N=19,983$), we also checked the replication of the trans-ancestry meta-analysis in the UKB sample, which includes only individuals of European descent. Among the six variants that reached genome-wide significance in the trans-ancestry meta-analysis (Table S5), four were replicated in the UKB cohort: *TCF4* rs12458015 (MVP $p=9.6 \times 10^{-11}$; UKB $p=9.91 \times 10^{-5}$), *CRHR1* rs1724409 (MVP $p=3.55 \times 10^{-11}$; UKB $p=2.42 \times 10^{-3}$), *HSD17B11* rs12649023 (MVP $p=1.32 \times 10^{-8}$; UKB $p=8.78 \times 10^{-3}$), and *CAMVK* rs2681780 (MVP $p=8.82 \times 10^{-12}$; UKB $p=2.42 \times 10^{-3}$).

Discussion

PTSD is a commonly occurring psychiatric consequence of exposure to extreme, life threatening stress. We report herein the results from MVP of the first GWAS of the PTSD re-experiencing (REX) symptom cluster, which reflects the most characteristic set of PTSD symptoms. Our approach of using severity of the core PTSD phenotype – REX symptoms –

for GWAS obviates the reliance on a categorical phenotype such as DSM or ICD-defined PTSD; these have changed with various iterations to the diagnostic criteria and as a result have proven to identify individuals with varying levels of symptom severity.¹⁰ Our SNP results support eight separate GWS regions; our gene-based results point to *CRHR1* as well as several other genes expressed in brain; and our LD score regression results support genetic overlap with multiple psychiatric, behavioral and other medical phenotypes. While these data identify numerous biological mechanisms that may be associated with REX scores, two patterns stand out. The first pattern relates to steroid response or metabolism. We identified a GWS association mapped to a well-known 900 kb inversion region (MAF ~0.2 in Europeans)¹¹ that includes *CRHR1*, although in EAs the lead SNP mapped at *KANSL1*. In general, fine-mapping risk loci by statistical methods is difficult in regions of high LD. The inversion is much less common in Africans^{11,12} so meta-analysis between EAs and AAs would have the potential to narrow the associated region greatly, assuming a meaningful association is present in the latter population also. And indeed, on transpopulation meta-analysis, the statistical significance increased by about an order of magnitude (to rs174409 $p=3.6\times 10^{-11}$) with the lead SNP now mapped to *CHRHI*, a locus with considerable prior support on the basis of known biology.¹³ Thus, even though our AA sample was too small for locus identification when taken individually, transpopulation meta-analysis was very valuable because of the differences not just in local LD but in larger-scale genomic structure (Figure S6). *CRHR1* also emerged as one of top genes in the gene-based genomewide analysis using MAGMA; and it was also replicated in the UKB cohort. *CRHR1* is involved in steroid signaling and response. This is a stress-response pathway long believed to be important in PTSD pathophysiology, and there has been considerable prior interest in *CRHR1*^{14,15} for PTSD and related phenotypes (notably neuroticism,¹⁶ with which we find PTSD to be genetically correlated). The two lines of evidence presented herein – SNP-based and gene-based – together with the prior biological support, make a strong case for the validity and importance of this discovery.

Another significant locus, *HSD17B11*, encoding hydroxysteroid 17-beta dehydrogenase 11, shares some biological features with *CHRHI*. Its protein product functions in steroid hormone metabolism and synthesis. Two of the eight GWS loci (one also significant on the gene level) thus fit closely with our current understanding of stress response and its relationship to PTSD. *HSD17B11* was replicated in the UKB sample.

The second pattern involves another two loci previously associated with schizophrenia and gene-level pleiotropy with other psychiatric traits. *TCF4* (encoding transcription factor 4; lead SNP associated at $p=5.4\times 10^{-11}$ in the present study), important in CNS development, has long been known to be associated to schizophrenia¹⁷, and was one of the first loci implicated via well-powered cross disorder analysis in the Psychiatric Genomics Consortium¹⁸. An additional significant locus, *MAD1L1*, encodes MAD1 Mitotic Arrest Deficient Like 1, and has previously been significantly associated with schizophrenia and with bipolar disorder.¹⁹

This second pattern gives rise to additional pathophysiological hypotheses. We found both single-SNP- and gene-level genetic evidence for overlap of REX with schizophrenia and other psychiatric traits based on LD score regression. Genetic correlation with schizophrenia

–also observed in PGC-PTSD⁵ – is of particular interest, owing to the phenomenological similarities between REX and hallucinating. We might consider the main difference between these two experiences to be thought alienation in the case of hallucinations – the subject, in the case of a hallucination, cannot recognize the re-experienced thought or event as his or her own. Psychotic symptoms, per se, occur in some PTSD patients and, even more broadly, among individuals exposed to traumatic events.²⁰ Auditory hallucinations occur not only in schizophrenia but in trauma-related disorders such as borderline personality disorder and, notably, PTSD.²¹ In context of these observed epidemiological associations between trauma exposure, PTSD, and psychosis, our findings of shared genetic risk for PTSD and schizophrenia should be further interrogated with the aim of revealing shared pathophysiological mechanisms and, possibly, new treatments. Regarding treatment, atypical antipsychotics have been used to treat PTSD, though the supporting evidence is controversial.²² In the largest single trial of an adjunctive atypical antipsychotic, risperidone, for PTSD, the drug was superior to placebo for REX (and hyperarousal) symptoms.²³ The possibility that a subset of patients with PTSD – possibly those with the greatest shared risk for schizophrenia (or the most prominent REX symptoms) – may be more likely to benefit from antipsychotic medications, should be tested in the drive toward precision medicine in psychiatry.

A fifth significant locus, *KCNIP4*, Potassium Voltage-Gated Channel Interacting Protein 4, relates to response to intracellular calcium, and interacts with presenilin. Calcium signaling is important in an extensive range of behavioral traits.^{18,24} A sixth locus, *CAMKV* (CaM Kinase Like Vesicle Associated), was associated with educational attainment in the UK Biobank sample²⁵. The other two GWS associations are at *LINC01360* and *SRPK2*, both less well understood in terms of their function. One gene significantly associated with REX in the gene-based analysis, *RAB27B*, has been implicated in exosome production necessary for appropriate responsiveness to inflammatory stimuli.²⁶ Given recent hypotheses about immune dysfunction in PTSD,^{3,27} the involvement of this locus deserves further scrutiny.

In our investigation of tissue and cell type enrichment⁹, we found that brain tissues from specific regions were associated with REX: cortex, hypothalamus, amygdala, hippocampus, and basal ganglia. We also found striatal medium spiny neurons associated with REX using MAGMA and LDSC. Other associations observed were congruent with these findings and there was little association evidence for non-neuronal cell types. These results suggest that different types of neurons located in different brain regions (striatum, cortex, hypothalamus, ventral tegmental area) may play roles in REX symptoms and PTSD. The finding of association with striatal medium spiny neurons, coupled with the aforementioned genetic correlation between REX and schizophrenia, should spur further investigation into a role for striatal dysfunction in PTSD, and conceivably may point to new avenues for pharmacotherapy.

We found replication evidence for GWS loci and a polygenic signal identified in the MVP cohort in an independent sample from UKB. Beyond the consistency of the results obtained, the comparison of MVP and UKB results strongly indicated that, although there is a large difference in combat-exposure between MVP and UKB (41.3% vs. 3.6%), there is still a large genetic overlap between REX phenotypes assessed in these two cohorts. Modest

heritability (comparable to that observed for other psychiatric traits, e.g., major depression²⁸) was observed in both samples (MVP $h^2 = 6.7\%$; UKB $h^2 = 4.3\%$).

Replication in UKB is particularly reassuring considering the differences between the UKB and MVP cohorts. Presently the UKB has more analyzable subjects (~500,000) than the MVP, but the MVP is still recruiting towards a final sample size of at least 1,000,000. MVP, being a sample of US veterans, includes disproportionately many subjects with military-related illnesses (like PTSD) and therefore is highly informative for such traits; its subjects tend to be lower in socioeconomic status than the population-based UKB (a means test is applied to determine eligibility for VA care). Owing to its military origin, MVP has a strong male predominance. The MVP moreover has strong representation of non-European ancestry populations and therefore is a major resource for mapping in, especially, African-Americans.

In addition to strong genetic correlations with multiple mood and anxiety-related phenotypes (e.g., neuroticism, treatment for depression or anxiety, depressive symptoms, insomnia), REX symptoms were genetically correlated with hypertension. PTSD has been shown in clinical epidemiological studies to be strongly associated with hypertension (and other cardiovascular disorders),^{29,30} and these data suggest a shared genetic basis for this comorbidity. Moreover, PTSD patients with clinical or subclinical hypertension might be particularly likely to respond to anti-adrenergic agents such as prazosin, given that this drug does not seem to be broadly effective for all patients with PTSD.³¹ The present findings suggest that this might be understood in terms of shared genetic risk. Stratifying those patients with PTSD with increased polygenic risk for hypertension might identify a subgroup especially responsive to the anti-PTSD effects of prazosin -- worth testing as the field moves toward a personalized approach to treatment, involving medication repurposing at the forefront of this movement.

In summary, we have presented results from the first large GWAS of reexperiencing, a quantitative trait highly characteristic of PTSD. Significant markers identified correspond to genes that influence corticosteroid and steroid function (e.g. *CRHR1* and *HSD17B11*), and have also been associated with schizophrenia (*TCF4* and *MAD1L1*), and other psychiatric traits (the latter two having been previously implicated for pleiotropic effects on psychiatric traits). Gene-based analyses identified numerous additional associated loci. At the cell type level, we found the transcriptomic profile of medium spiny neurons (located in the striatum) to be associated with reexperiencing symptoms. There were highly significant genetic correlation results with numerous mental and physical health traits. Our results confirm prior biological knowledge regarding relationships with steroid response, and suggest new biological relationships with implications for treatment response and precision medicine. They also demonstrate the immediate utility of the MVP sample for disorders prevalent in US veterans.

Methods

Subjects

All subjects are enrollees in the MVP³². Active users of the Veterans Health Administration healthcare system (>8 million veterans) learn of MVP via an invitational mailing and/or through MVP staff while receiving clinical care with informed consent and HIPAA authorization as the only inclusion criteria. As of August 2018, more than 670,000 veterans have enrolled in the program; for the current analyses, genotyping data were available from approximately 350,000 participants. Research involving MVP in general is approved by the VA Central IRB; the current project was also approved by IRBs in Boston, San Diego, and West Haven.

Enrollment involves providing a blood sample for genomic analyses, allowing ongoing access to medical records and other administrative health data by authorized MVP staff, and completing questionnaires. Two surveys are provided to MVP participants: the MVP Baseline Survey, for demographic factors, family pedigree, health status, lifestyle habits, military experiences, medical history, family history of specific illnesses, and physical features; and the optional MVP Lifestyle Survey, which includes the PCL (DSM-IV version)³³. This PCL version resembles the civilian version (PCL-C) in that it asks respondents to report how much they have been bothered *in the past 30 days* by symptoms in response to “stressful experiences” (i.e., not just military experiences). We scrutinized the symptom cluster most distinctive for PTSD, re-experiencing (REX) symptoms (range 5–25). REX items and their distributions in EAs and AAs are shown in Table S1 and Figure S1. Chronbach’s alpha for REX was calculated with the alpha function in the psych R package to test the internal consistency of the 5 items which make up the re-experiencing cluster. Chronbach’s alpha for the 5 reexperiencing items was 0.94 in EAs and 0.95 in AAs. Based on the population definition results, there were initially ~247,000 EA and ~60,000 AA subjects. After accounting for missing phenotype data as only subjects who completed the voluntary surveys could be included, the final sample sizes were 146,660 EAs and 19,983 AAs. Of 146,660 EA subjects, 41.3% were combat-exposed; and of 19,983 AA subjects, 36.2% were combat exposed (extended demographic information, Table S2).

Data Analysis

Genotyping was accomplished via a 723,305-SNP Affymetrix Axiom biobank array, customized for the MVP³². The first MVP data release (used here) includes genotyping data from 360,062 individuals. After quality control, there were 353,948 samples and 657,459 SNPs remaining. Of these, 187,644 subjects had available PCL scores. Population group assignment is discussed below. Due to missing PCL scores or covariate information, GWAS analysis considered 146,660 EA samples and 19,983 AA samples. The MVP genotype data were imputed through Minimac³⁴ using data from the 1000 Genomes Project reference panel (version 3), resulting in imputed genotypes for 49,134,253 SNPs. QC thresholds for post-imputation data were: info score $R^2 > 0.9$, MAF > 0.01 , and Hardy-Weinberg equilibrium test p-value $> 1 \times 10^{-6}$. Samples with call rate $> 98.5\%$ and SNPs with minor allele frequency (MAF) $> 2 \times 10^{-6}$ were retained.

Population group assignment: Ethnicity self-definitions for the MVP samples include AFR, EUR, Asian, American Indian or Alaska native, native Hawaiian or other Pacific Islander, and “other.” The MVP admixture analysis results from the first data release provided the probability for each sample to be “GBR (British in England and Scotland), PEL (Peruvians from Lima, Peru), YRI (Yoruba in Ibadan, Nigeria), CHB (Han Chinese in Beijing), and LWK (Luhya in Webuye, Kenya)”. A kinship coefficient cutoff of 0.0884 was used to remove 10,662 related individuals. We selected 26,497 SNPs through linkage disequilibrium (LD) clumping using PLINK³⁵, and then applied flashpca³⁶ to 343,286 MVP samples and 2,504 1000 Genomes samples³⁷. The annotated population groups (EUR, EAS, AFR, AMR, or SAS) in the 1000 Genomes samples, in addition to the admixture analysis results with a probability cut-off of 0.9, were used to define the final EUR (n=245,123) and AFR (n=62,034) populations (from which study subjects were drawn based on availability of phenotype information). Specifically, the subjects with a probability cut off of 0.9 relative to the genetic component observed in YRI (Yoruba in Ibadan, Nigeria; West Africa) or LWK (Luhya in Webuye, Kenya; East Africa) in the admixture analysis and the AFR samples of the 1,000 Genomes Project indicated the genetic diversity cluster for African-Americans on the pairwise PC-based scatter plots. The MVP subjects enclosed in the AFR cluster on the scatter plots of PC1 to PC4 are identified as the African-Americans, whose probabilities of being YRI or LWK from the admixture analysis are >0.6. Similarly, the EUR cluster in the pairwise PC-based scatter plots is defined by the subjects with a probability cut off of 0.9 relative to the genetic component observed in GBR (British in England and Scotland) and the EUR samples of the 1000 Genomes Project; the MVP samples within the EUR cluster in the PC-based plots are identified as European-Americans, whose probabilities of being GBR from the admixture analysis are >0.8.

For each GWAS analysis, we performed single variant tests using RVTEST³⁸ software, which implements association tests that can be used for common and rare variants using regression models also implemented in the better-known PLINK³⁵. We included the first 10 principal components, age, and sex as covariates in the linear regression association analyses. The results were filtered with imputation quality score $R^2 > 0.9$, minor allele frequency (MAF) > 0.01 , and Hardy-Weinberg equilibrium test p-value $> 1 \times 10^{-6}$. A threshold of GWAS p-value of 5×10^{-8} was adopted for genome wide significant (GWS) association results. Meta-analysis was performed for EA and AA results using PLINK.

Gene-based association analysis was conducted using MAGMA³⁹ implemented in the FUMA platform⁴⁰. Genome-wide significance was defined as 2.77×10^{-6} (Bonferroni correction based on 18,120 genes tested).

LD score regression (LDSC): To investigate shared molecular mechanisms, we tested the genetic overlap (i.e., shared risk alleles) of PTSD REX symptoms with respect to a wide range of phenotypic characteristics, including pathological and physiological traits. Genetic correlations were calculated using the LDSC method (available at <https://github.com/bulik/ldsc>)⁴¹. LDSC results regarding 232 traits were extracted from the data available at LDHub v2.0 (<http://ldsc.broadinstitute.org/ldhub/>)^{42,43,44}. Genetic correlations for an additional 1,547 traits were calculated using the GWAS summary association results available at <https://sites.google.com/broadinstitute.org/ukbbgwasresults>. These GWAS used data

regarding ~337,000 unrelated individuals of British descent from the UK Biobank (UKB)⁴⁵. False Discovery Rate (FDR) was applied to correct the genetic-correlation results for multiple testing and q values < 0.05 were considered to be significant. Individuals with admixed ancestral background such as AAs are a mosaic of haplotypes from different ancestral origins. As LDSC requires a LD reference panel, we did not perform these analyses for AA samples because LD reference is not considered reliable with respect to admixed populations, as also highlighted by the LDSC developers⁴².

Heritability estimation: We applied LDSC to perform heritability estimation and enrichment analysis for PCL REX scores.

Tissue and Cell Type Enrichment: At the tissue level, we used data from 53 human tissues (Genotype-Tissue Expression (GTEx) project version 7)⁸; at the cell type level, we used mouse data from 5 different brain regions broadly-defined (24 cell types) and narrowly-defined (149 cell types)⁹. Analyses were performed using MAGMA and partitioned LD score regression as previously described⁹ with minor modifications. Briefly, for the single cell data set⁹, gene expression for each cell type was scaled to 1,000,000 unique molecular identifiers (UMI) prior to computing specificity scores (defined as the proportion of total expression of specific genes performed in a given cell type). Median transcripts per million (TPM) across individuals were downloaded from the GTEx portal website (<https://gtexportal.org/>) and used to compute specificity scores. For each tissue or cell-type, the specificity scores were then rank-transformed to a standard normal distribution using the *rntranform* function from the GenABEL R package⁴⁶. Using MAGMA, the standard normalized specificity scores were then regressed on gene-wise association, defined as the mean p-value across all SNPs assigned to the gene (+35kb upstream to -10kb downstream). Using partitioned LD score regression⁴⁷, we selected the top 10% most specific genes for each tissue/cell type, extended the coordinates of each gene by 100kb upstream and downstream, and tested for heritability enrichment of these regions⁴⁸. Results from both methods were integrated by averaging the $-\log_{10}$ p-values obtained for each tissue/cell type. Bonferroni multiple-testing correction was applied for all tests performed in this analysis (0.05/(53+24+149)).

Pathway analysis: A list of 231 genes was created by using a 0.10 FDR cutoff from the MAGMA GWAS output. This list was imported into Ingenuity IPA (Ingenuity Systems, Redwood City, CA, USA) to identify the most enriched canonical pathways. This same list of 231 genes was also input into STRING⁴⁹ to identify associations between genes and protein products.

Replication: To verify the consistency of our results in an independent sample, we used UKB summary association data (117,900 subjects of European descent) for an item from the traumatic events assessment which is one of the five REX items in MVP: “Repeated disturbing thoughts of stressful experience in past month” (UKB Field ID: 20497). A detailed description of the quality control and the association analysis used to generate these data is available at https://github.com/Nealelab/UK_Biobank_GWAS.

Polygenic risk scoring: The PRS analysis was conducted on the basis of the GWAS summary association data for both training and target datasets using the gtx R package incorporated in PRSice software⁵⁰. Specifically, we calculated estimates of the explained variance from a multivariate regression model.

Supplementary Material

Refer to Web version on PubMed Central for supplementary material.

Acknowledgments

This research is based on data from the Million Veteran Program (MVP), Office of Research and Development, Veterans Health Administration, and was supported by MVP and the VA Cooperative Studies Program (CSP) study #575B.

REFERENCES

1. Fulton JJ et al. The prevalence of posttraumatic stress disorder in Operation Enduring Freedom/ Operation Iraqi Freedom (OEF/OIF) Veterans: a meta-analysis. *J Anxiety Disord* 31, 98–107 (2015). [PubMed: 25768399]
2. Logue MW et al. A genome-wide association study of post-traumatic stress disorder identifies the retinoid-related orphan receptor alpha (RORA) gene as a significant risk locus. *Mol Psychiatry* 18, 937–42 (2013). [PubMed: 22869035]
3. Stein MB et al. Genome-wide Association Studies of Posttraumatic Stress Disorder in 2 Cohorts of US Army Soldiers. *JAMA Psychiatry* 73, 695–704 (2016). [PubMed: 27167565]
4. Xie P et al. Genome-wide association study identifies new susceptibility loci for posttraumatic stress disorder. *Biological psychiatry* 74, 656–63 (2013). [PubMed: 23726511]
5. Duncan LE et al. Largest GWAS of PTSD (N=20 070) yields genetic overlap with schizophrenia and sex differences in heritability. *Mol Psychiatry* 23, 666–673 (2018). [PubMed: 28439101]
6. Blanchard EB, Jones-Alexander J, Buckley TC & Forneris CA Psychometric properties of the PTSD Checklist (PCL). *Behav Res Ther* 34, 669–73 (1996). [PubMed: 8870294]
7. Battle A, Brown CD, Engelhardt BE & Montgomery SB Genetic effects on gene expression across human tissues. *Nature* 550, 204–213 (2017). [PubMed: 29022597]
8. Consortium GT Genetic effects on gene expression across human tissues. *Nature* 550, 204 (2017). [PubMed: 29022597]
9. Skene NG et al. Genetic identification of brain cell types underlying schizophrenia. *Nature Genetics* 50, 825–833 (2018). [PubMed: 29785013]
10. Barbano AC et al. Clinical implications of the proposed ICD-11 PTSD diagnostic criteria. *Psychol Med*, 1–8 (2018).
11. Stefansson H et al. A common inversion under selection in Europeans. *Nature Genetics* 37, 129 (2005). [PubMed: 15654335]
12. Cáceres A, Sindi SS, Raphael BJ, Cáceres M & González JR Identification of polymorphic inversions from genotypes. *BMC Bioinformatics* 13, 28 (2012). [PubMed: 22321652]
13. Amstadter AB et al. Corticotrophin-releasing hormone type 1 receptor gene (CRHR1) variants predict posttraumatic stress disorder onset and course in pediatric injury patients. *Disease markers* 30, 89–99 (2011). [PubMed: 21508513]
14. Kasckow JW, Baker D & Geraciotti TD Jr. Corticotropin-releasing hormone in depression and post-traumatic stress disorder. *Peptides* 22, 845–51 (2001). [PubMed: 11337099]
15. McFarlane AC, Barton CA, Yehuda R & Wittert G Cortisol response to acute trauma and risk of posttraumatic stress disorder. *Psychoneuroendocrinology* 36, 720–7 (2011). [PubMed: 21093988]
16. Smith DJ et al. Genome-wide analysis of over 106 000 individuals identifies 9 neuroticism-associated loci. *Mol Psychiatry* 21, 749–57 (2016). [PubMed: 27067015]

17. Stefansson H et al. Common variants conferring risk of schizophrenia. *Nature* 460, 744–7 (2009). [PubMed: 19571808]
18. Cross-Disorder Group of the Psychiatric Genomics, C. et al. Identification of risk loci with shared effects on five major psychiatric disorders: a genome-wide analysis. *Lancet* 381, 1371–9 (2013). [PubMed: 23453885]
19. Ruderfer DM et al. Polygenic dissection of diagnosis and clinical dimensions of bipolar disorder and schizophrenia. *Mol Psychiatry* 19, 1017–1024 (2014). [PubMed: 24280982]
20. McGrath JJ et al. Trauma and psychotic experiences: transnational data from the World Mental Health Survey. *Br J Psychiatry* 211, 373–380 (2017). [PubMed: 29097400]
21. Waters F, Blom JD, Jardri R, Hugdahl K & Sommer IEC Auditory hallucinations, not necessarily a hallmark of psychotic disorder. *Psychol Med* 48, 529–536 (2018). [PubMed: 28826411]
22. Ravindran LN & Stein MB The pharmacologic treatment of anxiety disorders: a review of progress. *The Journal of clinical psychiatry* 71, 839–54 (2010). [PubMed: 20667290]
23. Krystal JH et al. Adjunctive risperidone treatment for antidepressant-resistant symptoms of chronic military service-related PTSD: a randomized trial. *JAMA* 306, 493–502 (2011). [PubMed: 21813427]
24. Gelernter J et al. Genome-wide association study of opioid dependence: multiple associations mapped to calcium and potassium pathways. *Biol Psychiatry* 76, 66–74 (2014). [PubMed: 24143882]
25. Okbay A et al. Genome-wide association study identifies 74 loci associated with educational attainment. *Nature* 533, 539–42 (2016). [PubMed: 27225129]
26. Alexander M et al. Rab27-Dependent Exosome Production Inhibits Chronic Inflammation and Enables Acute Responses to Inflammatory Stimuli. *J Immunol* 199, 3559–3570 (2017). [PubMed: 28978688]
27. Michopoulos V, Powers A, Gillespie CF, Ressler KJ & Jovanovic T Inflammation in Fear- and Anxiety-Based Disorders: PTSD, GAD, and Beyond. *Neuropsychopharmacology* 42, 254–270 (2017). [PubMed: 27510423]
28. Howard DM et al. Genome-wide meta-analysis of depression identifies 102 independent variants and highlights the importance of the prefrontal brain regions. *Nat Neurosci* (2019).
29. Sumner JA et al. Post-traumatic stress disorder symptoms and risk of hypertension over 22 years in a large cohort of younger and middle-aged women. *Psychol Med* 46, 3105–3116 (2016). [PubMed: 27534802]
30. Roy SS, Foraker RE, Girton RA & Mansfield AJ Posttraumatic Stress Disorder and Incident Heart Failure Among a Community-Based Sample of US Veterans. *Am J Public Health* 105, 757–63 (2015). [PubMed: 25713943]
31. Raskind MA et al. Trial of Prazosin for Post-Traumatic Stress Disorder in Military Veterans. *N Engl J Med* 378, 507–517 (2018). [PubMed: 29414272]

Methods References

32. Gaziano JM et al. Million Veteran Program: A mega-biobank to study genetic influences on health and disease. *J Clin Epidemiol* 70, 214–23 (2016). [PubMed: 26441289]
33. Wilkins KC, Lang AJ & Norman SB Synthesis of the psychometric properties of the PTSD checklist (PCL) military, civilian, and specific versions. *Depress Anxiety* 28, 596–606 (2011). [PubMed: 21681864]
34. Das S et al. Next-generation genotype imputation service and methods. *Nat Genet* 48, 1284–7 (2016). [PubMed: 27571263]
35. Purcell S et al. PLINK: A Tool Set for Whole-Genome Association and Population-Based Linkage Analyses. *The American Journal of Human Genetics* 81, 559–575 (2007). [PubMed: 17701901]
36. Abraham G & Inouye M Fast principal component analysis of large-scale genome-wide data. *PLoS One* 9, e93766 (2014). [PubMed: 24718290]
37. Auton A et al. A global reference for human genetic variation. *Nature* 526, 68–74 (2015). [PubMed: 26432245]

38. Zhan X, Hu Y, Li B, Abecasis GR & Liu DJ RVTESTS: an efficient and comprehensive tool for rare variant association analysis using sequence data. *Bioinformatics* 32, 1423–6 (2016). [PubMed: 27153000]
39. de Leeuw CA, Mooij JM, Heskes T & Posthuma D MAGMA: generalized gene-set analysis of GWAS data. *PLoS Comput Biol* 11, e1004219 (2015). [PubMed: 25885710]
40. Watanabe K, Taskesen E, van Bochoven A & Posthuma D FUMA: Functional mapping and annotation of genetic associations. *bioRxiv* (2017).
41. Bulik-Sullivan B et al. An atlas of genetic correlations across human diseases and traits. *Nat Genet* 47, 1236–41 (2015). [PubMed: 26414676]
42. Bulik-Sullivan BK, Loh PR, Finucane HK, Ripke S & Yang J LD Score regression distinguishes confounding from polygenicity in genome-wide association studies. *PLoS Genet* 47, 291–5 (2015).
43. Zheng J et al. HAPRAP: a haplotype-based iterative method for statistical fine mapping using GWAS summary statistics. *Bioinformatics* 33, 79–86 (2017). [PubMed: 27591082]
44. Zheng J et al. LD Hub: a centralized database and web interface to perform LD score regression that maximizes the potential of summary level GWAS data for SNP heritability and genetic correlation analysis. *Bioinformatics* 33, 272–279 (2017). [PubMed: 27663502]
45. Bycroft C et al. Genome-wide genetic data on ~500,000 UK Biobank participants. *bioRxiv* (2017).
46. Aulchenko YS, Ripke S, Isaacs A & van Duijn CM GenABEL: an R library for genome-wide association analysis. *Bioinformatics* 23, 1294–1296 (2007). [PubMed: 17384015]
47. Finucane HK et al. Partitioning heritability by functional annotation using genome-wide association summary statistics. *Nat Genet* 47, 1228–35 (2015). [PubMed: 26414678]
48. Finucane HK et al. Heritability enrichment of specifically expressed genes identifies disease-relevant tissues and cell types. *Nat Genet* 50, 621–629 (2018). [PubMed: 29632380]
49. Szklarczyk D et al. The STRING database in 2017: quality-controlled protein-protein association networks, made broadly accessible. *Nucleic Acids Res* 45, D362–D368 (2017). [PubMed: 27924014]
50. Euesden J, Lewis CM & O'Reilly PF PRSice: Polygenic Risk Score software. *Bioinformatics* 31, 1466–8 (2015). [PubMed: 25550326]

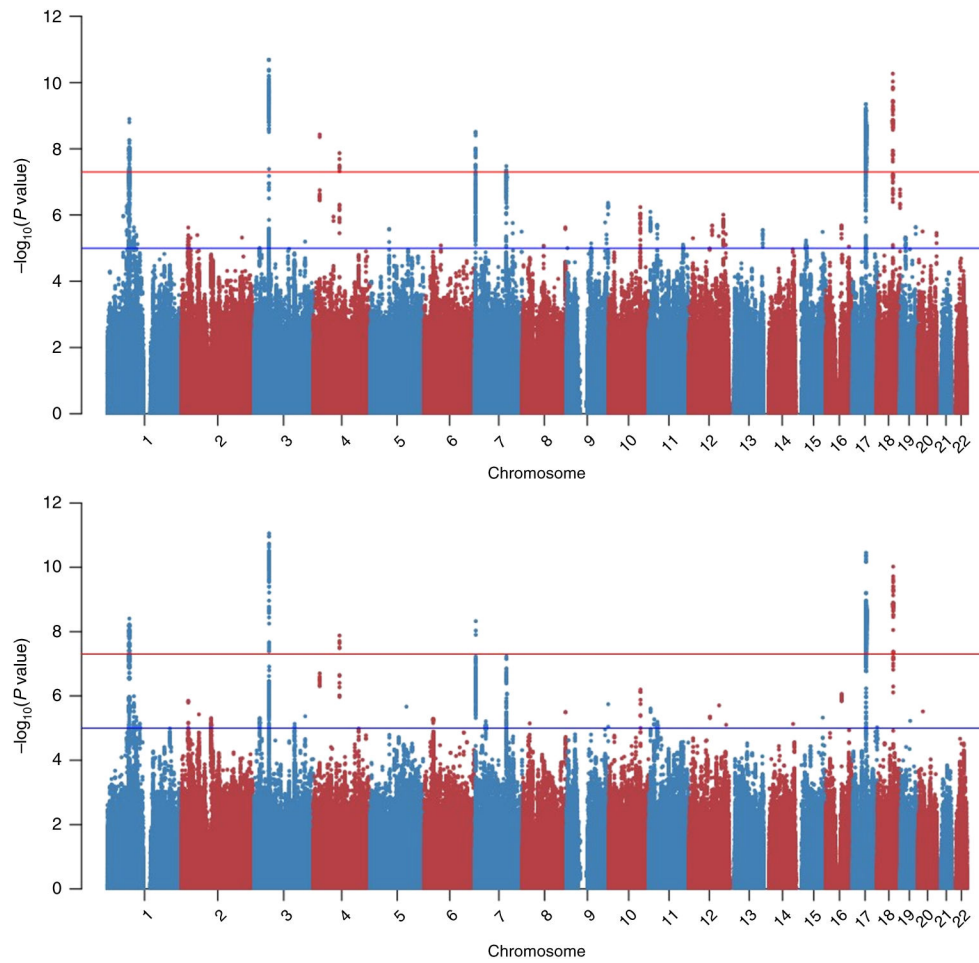


Figure 1: Manhattan plots – European-Americans (top; N=146,660), and meta-analyzed European- and African-Americans (bottom; AA N=19,983). Negative logarithm of the association two-sided p value (from a linear regression model) for each variant tested is reported on the y-axis. Red and blue line indicates the Bonferroni multiple testing correction and suggestive significances, respectively.

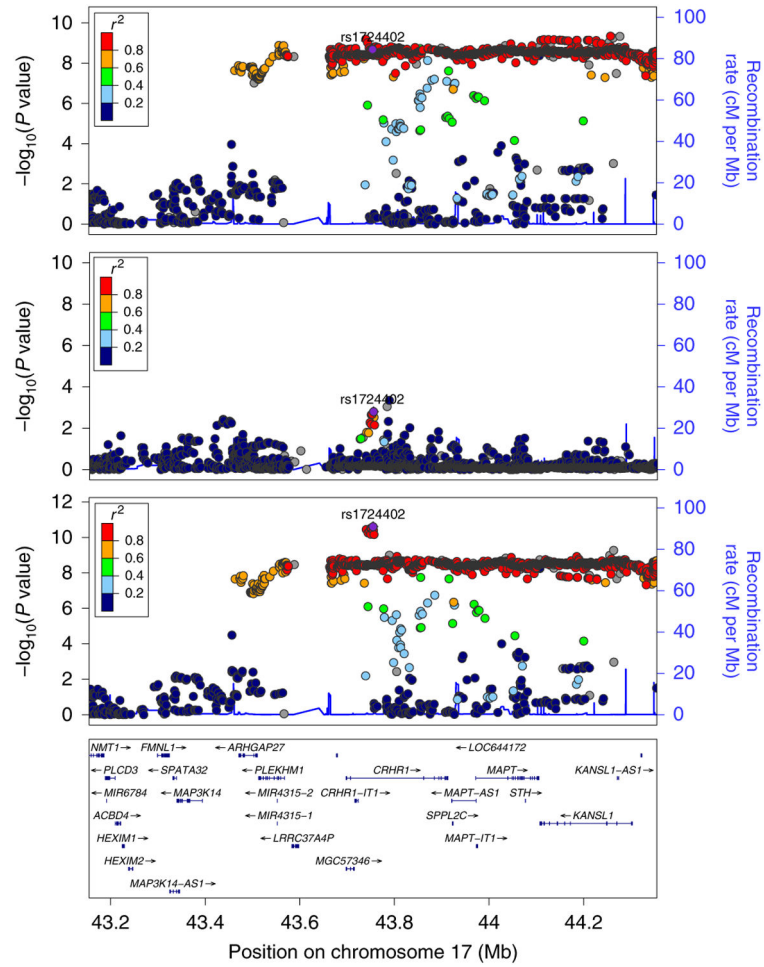


Figure 2: Regional Manhattan plots, associated region on chromosome 17, European-Americans, African-Americans, and European- and African-Americans, meta-analyzed – showing that associated region localizes to gene CRHR1 only on trans-population meta-analysis. Details regarding sample size and statistical test are reported in the Figure 1 legend.

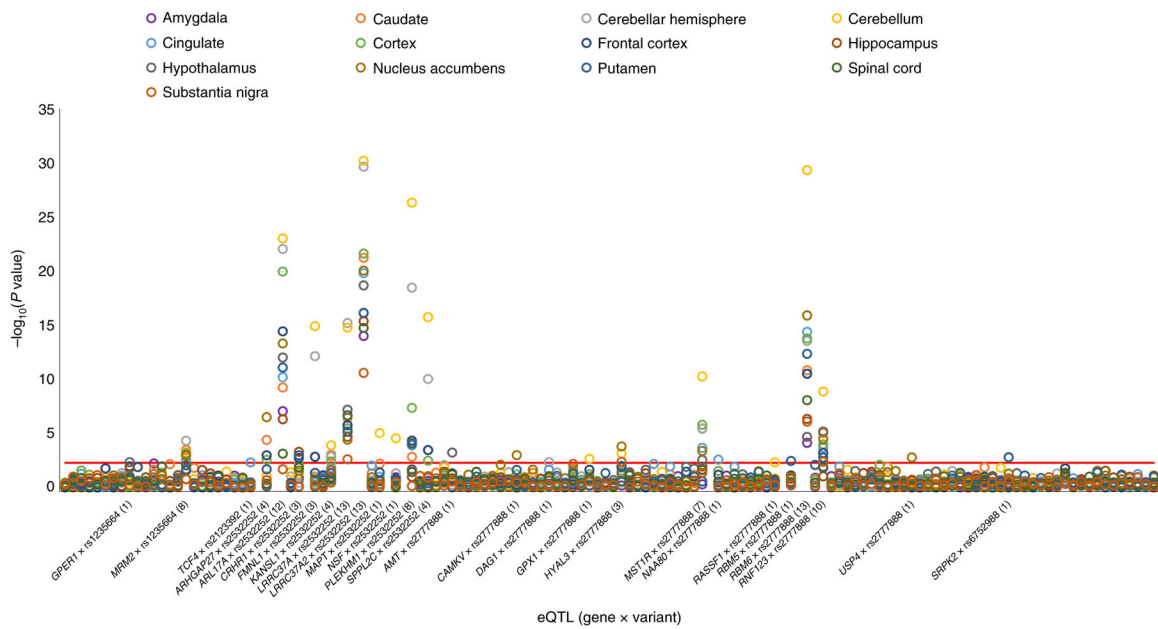


Figure 3: eQTLs observed with respect to the eight GWS variants identified in EUR meta-analysis (N=146,660) considering protein-coding genes and 13 brain tissues. The eQTL IDs (x-axis, gene*variant) are reported only for those with at least one result surviving FDR multiple testing correction. Negative logarithm of the association two-sided p value for each eQTL tested is reported on the y-axis. The number reported between parentheses in each eQTL corresponds to the significant results observed with respect to the 13 brain tissues tested. The red line corresponds to the FDR multiple testing correction ($q < 5\%$).

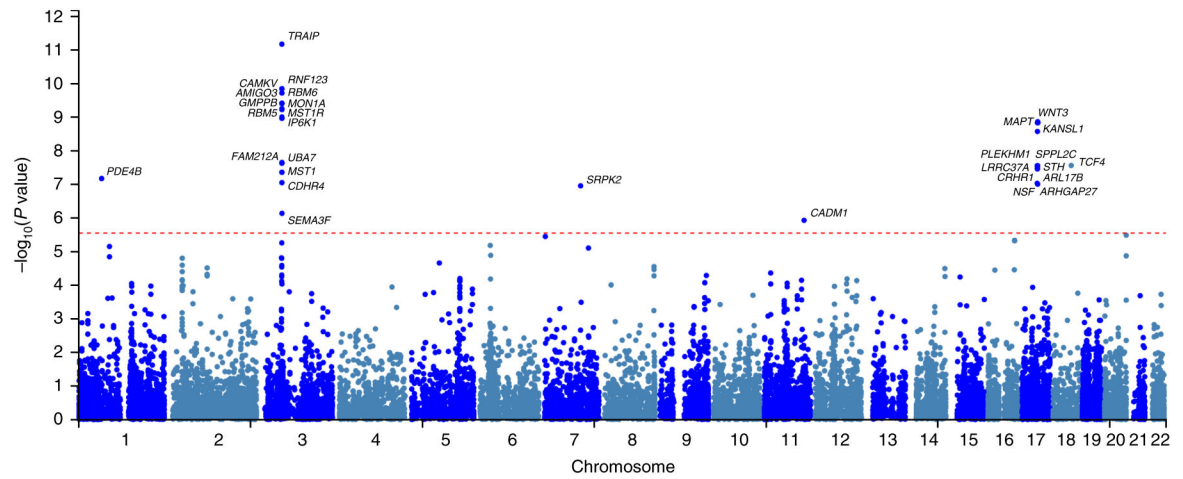
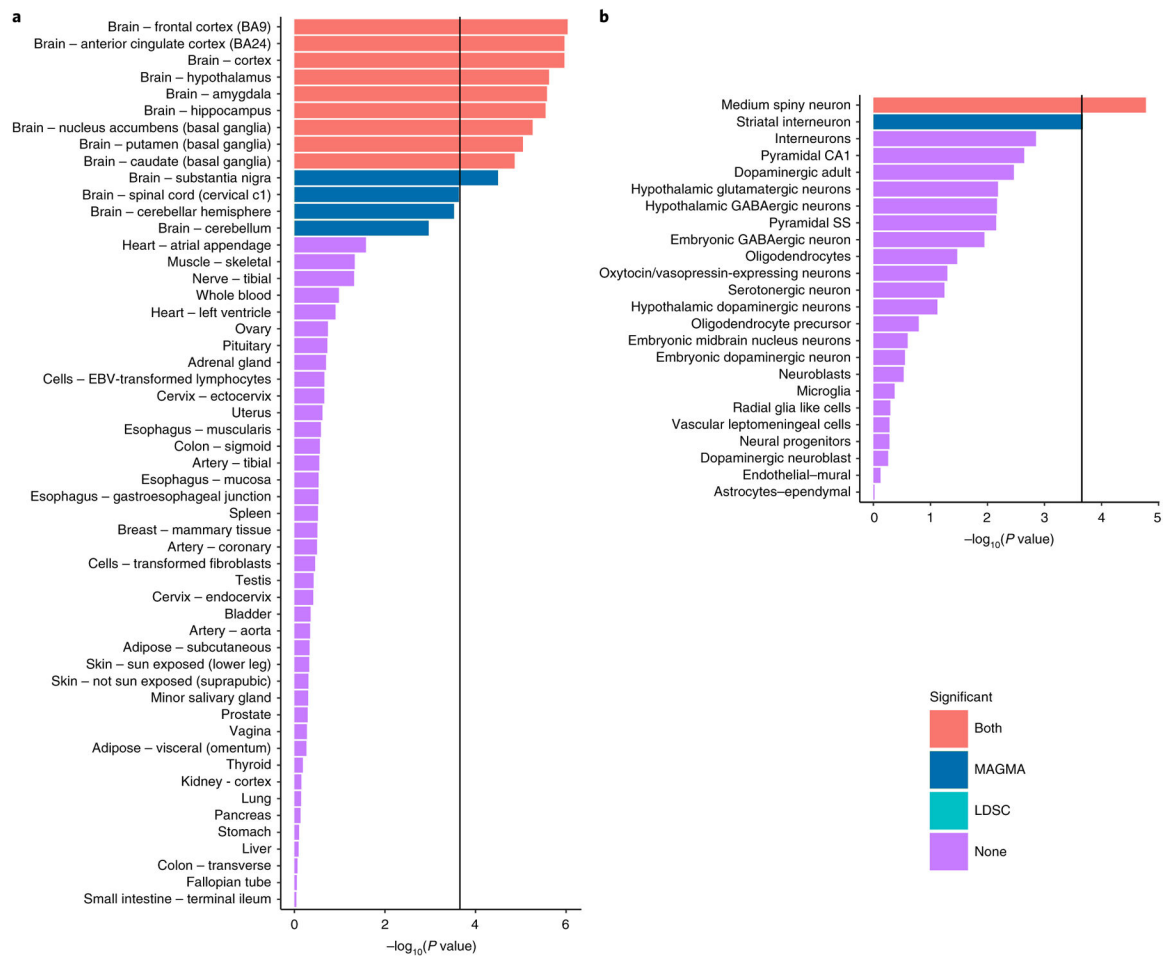


Figure 4: Manhattan plot reporting gene-based association results generated from the EA cohort (N=146,660). Details are reported in Supplemental Table S7. Negative logarithm of the association p value for each gene tested is reported on the y-axis. The red dotted line represents the Bonferroni threshold for gene-based association (0.05/18120).

**Figure 5:**

a. Enrichment analysis between human tissue specific expression and PTSD re-experiencing genetic associations obtained from the EUR sample (N=146,660). Each bar represents the negative logarithm of the enrichment p value for each tissue tested obtained from two different statistical methods (LDSC and MAGMA, see details in the method section). The black bar represents the Bonferroni threshold ($0.05/(53+24+149)$). **b.** Enrichment analysis between mouse brain cell type specific expression (broadly defined) and PTSD re-experiencing genetic associations obtained from the EUR sample (N=146,660). Each bar represents the negative logarithm of the enrichment p value for each cell type tested obtained from two different statistical methods (LDSC and MAGMA, see details in the method section). The black bar represents the Bonferroni threshold ($0.05/(53+24+149)$).

Table 1:

Top markers in EA GWAS of REX in MVP cohort and replication in UKB sample.

rsID	CHR	BP	Closest Gene (location)	effect allele	other allele	MVP Re-experiencing			UKB REX		
						Beta	SE	P	Beta	SE	P
rs7519147	1	73994416	LINC01360 (downstream)	T	C	-0.101	0.017	1.29E-09	-0.001	0.003	0.740
rs2777888	3	49898000	CAMKV (intron)	G	A	0.111	0.017	2.07E-11	0.007	0.003	0.034
rs4697248	4	21931195	KCNIP4 (intron)	C	T	0.105	0.018	3.73E-09	0.006	0.003	0.078
rs7688962	4	88281182	HSD17B11 (intron)	A	G	-0.126	0.022	1.34E-08	-0.011	0.004	0.012
rs10235664	7	2086814	MAD1L1 (intron)	C	T	-0.113	0.019	3.09E-09	-0.0003	0.004	0.940
rs67529088	7	104907066	SRPK2 (intron)	C	G	-0.09	0.016	3.32E-08	-0.007	0.003	0.030
rs2532252	17	44257783	KANSL1 (intron)	G	A	0.122	0.019	4.50E-10	0.010	0.004	0.007
rs2123392	18	53214865	TCF4 (intron)	C	T	0.113	0.017	5.38E-11	0.011	0.003	3.62E-04