



SYSTEMATIC REVIEW

Gut mucosal colonisation with extended-spectrum beta-lactamase producing Enterobacteriaceae in sub-Saharan Africa: a systematic review and meta-analysis [version 1; peer review: 2 approved]

Joseph M. Lewis ^{1,2}, Rebecca Lester ^{1,2}, Paul Garner ¹,
Nicholas A. Feasey ^{1,2}

¹Liverpool School of Tropical Medicine, Liverpool, Merseyside, L3 5QA, UK

²Malawi Liverpool Wellcome Clinical Research Programme, Blantyre, Malawi

v1 First published: 23 Oct 2019, 4:160 (<https://doi.org/10.12688/wellcomeopenres.15514.1>)
Latest published: 23 Oct 2019, 4:160 (<https://doi.org/10.12688/wellcomeopenres.15514.1>)

Abstract

Background: Extended-spectrum beta-lactamase producing Enterobacteriaceae (ESBL-E) threaten human health; and, in areas of sub-Saharan Africa (sSA) where carbapenems are not available, may render ESBL-E infections untreatable. Gut mucosal colonisation probably occurs before infection, making prevention of colonisation an attractive target for intervention, but the epidemiology of ESBL-E in sSA is poorly described.

Objectives: Describe ESBL-E colonisation prevalence in sSA and risk factors associated with colonisation.

Methods: Studies included were prospective cross-sectional or cohort studies reporting gut mucosal ESBL-E colonisation in any population in sSA. We searched PubMed and Scopus on 18 December 2018. We summarise the range of prevalence across sites and tabulated risk factors for colonisation. The protocol was registered (Prospero ID [CRD42019123559](https://doi.org/10.1111/CRD4.2019123559)).

Results: From 2975 abstracts we identified 32 studies including a total of 8619 participants from a range of countries and settings. Six studies were longitudinal; no longitudinal studies followed patients beyond hospital discharge. Prevalence varied between 5 and 84% with a median of 31%, with a relationship to setting: pooled ESBL-E colonisation in community studies was 18% (95% CI 12 to 28, 12 studies); in studies recruiting people at admission to hospital colonisation was 32% (95% CI 24 to 41% 8 studies); and for inpatients, colonisation was 55% (95% CI 49 to 60%, 7 studies). Antimicrobial use was associated with increased risk of ESBL-E colonisation, and protected water sources or water treatment by boiling may reduce risk.

Conclusions: ESBL-E colonisation is common in sSA, but how people become carriers and why is not well understood. To inform the design of interventions to interrupt transmission in this setting requires longitudinal, community studies.

Open Peer Review

Reviewer Status

	Invited Reviewers	
	1	2
version 1 published 23 Oct 2019	 report	 report

- 1 **Samuel Kariuki** , Kenya Medical Research Institute (KEMRI), Nairobi, Kenya
- 2 **Vincent Richard** , Institut Pasteur, Paris, France

Any reports and responses or comments on the article can be found at the end of the article.

Keywords

ESBL, Extended-spectrum beta-lactamase, Africa south of the Sahara, Antimicrobial resistance

Corresponding author: Joseph M. Lewis (joseph.lewis@lstm.ac.uk)

Author roles: **Lewis JM:** Conceptualization, Data Curation, Formal Analysis, Investigation, Methodology, Project Administration, Visualization, Writing – Original Draft Preparation, Writing – Review & Editing; **Lester R:** Conceptualization, Data Curation, Formal Analysis, Investigation, Methodology, Writing – Review & Editing; **Garner P:** Methodology, Supervision, Writing – Review & Editing; **Feasey NA:** Conceptualization, Methodology, Supervision, Writing – Review & Editing

Competing interests: No competing interests were disclosed.

Grant information: JL and RL are supported by Wellcome Trust Clinical PhD Fellowships (109105z/15/a and University of Liverpool block award 347 [203919/Z/16/Z] respectively). NF is funded by the Antimicrobial Resistance Cross-Council Initiative through a grant from the Medical Research Council, a Council of UK Research and Innovation, and the National Institute for Health Research. This award is part of the EDCTP2 programme supported by the European Union (Grant number MR/S004793/1).

The funders had no role in study design, data collection and analysis, decision to publish, or preparation of the manuscript.

Copyright: © 2019 Lewis JM *et al.* This is an open access article distributed under the terms of the [Creative Commons Attribution License](https://creativecommons.org/licenses/by/4.0/), which permits unrestricted use, distribution, and reproduction in any medium, provided the original work is properly cited.

How to cite this article: Lewis JM, Lester R, Garner P and Feasey NA. **Gut mucosal colonisation with extended-spectrum beta-lactamase producing Enterobacteriaceae in sub-Saharan Africa: a systematic review and meta-analysis [version 1; peer review: 2 approved]**

Wellcome Open Research 2019, 4:160 (<https://doi.org/10.12688/wellcomeopenres.15514.1>)

First published: 23 Oct 2019, 4:160 (<https://doi.org/10.12688/wellcomeopenres.15514.1>)

Introduction

Extended-spectrum beta-lactamase producing Enterobacteriaceae (ESBL-E) are a significant threat to human health, and have been identified by the World Health Organisation as pathogens of critical importance¹. In sub-Saharan Africa (sSA), it is increasingly clear that a significant proportion of invasive Enterobacteriaceae infections are ESBL-E and the absence of second line antimicrobials can render infections with these pathogens locally untreatable². Strategies to interrupt ESBL-E transmission that can be practically deployed at scale in low resource settings are urgently needed.

Gut mucosal colonisation with Enterobacteriaceae is thought to precede invasive infection^{3,4}, and so preventing ESBL-E colonisation is an attractive strategy for prevention of invasive disease. Data describing the basic epidemiology of ESBL-E colonisation in sSA, will help inform the design of interventions targeted at reducing colonisation. A 2016 meta-analysis of community ESBL-E colonisation prevalence among healthy individuals found only four studies from sSA with a pooled prevalence of 15% (95% CI 4–31%), and significant between-study heterogeneity⁵. No studies described risk factors from Africa. We were aware of a number of studies that had been published since 2016 including a number that described ESBL-E colonisation in any population, so undertook a systematic review and meta-analysis with two aims: firstly, to describe the prevalence of ESBL-E gut mucosal colonisation in sSA; and secondly, to describe any risk factors associated with colonisation. In terms of the PRISMA (preferred reporting items for systematic reviews and meta analyses) PICOS (participants, interventions, comparisons, outcomes and study design) approach, our questions can be framed as: what is the prevalence of ESBL-E gut mucosal colonisation (the outcome) and risk factors for colonisation (comparisons) in any population in sSA (the population) as measured in prospective cross-sectional or cohort studies (study design).

Methods

Inclusion criteria were any prospective cross-sectional or cohort study that had screened for gut mucosal colonisation of ESBL-E in any population in sSA for which it was possible to extract a numerator and denominator to calculate an ESBL-E colonisation prevalence. Exclusion criteria were studies in which the sampled population was not clearly defined in a reproducible way (i.e. laboratory-based studies), or if the laboratory techniques aimed to isolate only a particular organism or type of organism (e.g. Enteropathogenic *E. coli*).

PubMed and Scopus were searched in all fields using the search terms given in Table 1, on 18 December 2018. Abstracts were extracted into Endnote X7.8 (Thomson Reuters, United States) and independently reviewed against the inclusion criteria by two authors (JL and RL), with disagreements settled by consensus.

Full-text review of included studies was then undertaken, with studies assessed against the same inclusion criteria, again with disagreements settled by consensus. Data were then extracted into a Microsoft Excel for Mac v16.27 spreadsheet (Microsoft, United States): study title and authors, year of publication, dates of sample collection, inclusion criteria, median age or participants, details of microbiologic testing procedures, number of participants and number of participants from whom ESBL-E were isolated, and any risk factors for ESBL-E that were assessed and/or found to be associated with ESBL-E colonisation. Two authors extracted data independently (RL and JL) and any inconsistencies corrected by re-review of the original paper. For cohort studies only the baseline prevalence was included. Prevalence was presented as forest plots with exact binomial confidence intervals. Age group (neonate, child, adult, as per study definition) and location of sampling (community, outpatient [including health centre attendees], on hospital admission, [defined as a hospital inpatient for < 24hr] hospitalised, [defined as a hospital inpatient for > 24hr]) were selected as *a priori* subgroups that we hypothesised may explain heterogeneity in ESBL-E prevalence, and analyses were stratified by these subgroups. Studies were additionally classified as being carried out in a *special population* if they were carried out in a sub-population of a subgroup (for example, pregnant women in the community). Effect size of risk factors for ESBL-E colonisation were presented as odds ratios; if odds ratios were not provided by the original studies then they were calculated, with 0.5 added to zero cells. Pooled random effect summary estimates of prevalence, where calculated, were generated using the *metaprop* package in R using the inverse variance method with a logit transformation. All analysis was undertaken using R v3.5.1 (R Foundation for Statistical Computing, Vienna, Austria).

Risk of bias of included studies was assessed with a modified Critical Appraisal Skills Programme (CASP) checklist, designed to fit our research question (full tool available as *extended data*). The risk of bias assessment was performed by JL and RL, and any disagreements were resolved by consensus.

Table 1. Systematic review search terms.

((ESBL) OR Extended-spectrum beta-lactamase) AND (((Angola OR Benin OR Botswana OR Burkina Faso OR Burundi OR Cameroon OR Cape Verde OR Central African Republic OR Chad OR Comoros OR Republic of the Congo OR Congo Brazzaville OR Democratic republic of the Congo OR Cote d'Ivoire OR Djibouti OR Equatorial Guinea OR Eritrea OR Ethiopia OR Gabon OR The Gambia OR Ghana OR Guinea OR Guinea-Bissau OR Kenya OR Lesotho OR Liberia OR Madagascar OR Malawi OR Mali OR Mauritania OR Mauritius OR Mozambique OR Namibia OR Niger OR Nigeria OR Reunion OR Rwanda OR Sao Tome and Principe OR Senegal OR Seychelles OR Sierra Leone OR Somalia OR South Africa OR Sudan OR Swaziland OR Eswatini OR Tanzania OR Togo OR Uganda OR Western Sahara OR Zambia OR Zimbabwe) OR Africa))

The protocol of this review was published on PROSPERO (PROSPERO ID [CRD42019123559](#)) and the review was undertaken as per Preferred Reporting Items for Systematic Reviews and Meta-Analyses (PRISMA) guidelines (PRISMA checklist available [Reporting guidelines](#)).

Results

Of 2975 identified unique studies, 32 were included in this review^{6–37} (Figure 1), from 19 countries in sSA (Table 2). Studies from three countries – Tanzania (n=7), Madagascar (n=4) and Cameroon (n=4) – together made up 15/32 (47%) of the available studies. In total, 8619 participants were included and for 7232/8619 (84%) it was possible to disaggregate the participants into age groups: 4313/7232 (60%) were adults, 2470/7232 (34%) children and 449/7232 (6%) neonates. 2302/8619 (27%) of included participants were community members, 1729/8619 (20%) were outpatients, 2836/8619 (33%) were sampled on admission to hospital, and 1534/8619 (18%) were inpatients. 6/32 studies were cohort studies; all of these studies followed patients up whilst hospitalised only. Many studies were carried out in special populations, including the majority of community studies: 9/12 community studies were in special populations, as well as 3/7 outpatient studies, 3/8 studies of participants on hospital admission and 2/7 inpatient studies. It was not possible to classify patients from two studies into our predefined categories: one sampled staff and children of an orphanage, and the other hospital workers and their families. These studies were excluded from the pooled analyses. Details of the microbiological testing procedures are shown in Table 3.

The results of the risk of bias assessment are shown in Figure 2. The most notable potential for biased ESBL-E prevalence estimates resulted from selection of study populations. Several studies recruited a selected group, which we defined as a

special population: pregnant women, street children, children and staff of an orphanage, or food handlers in schools. These are likely to produce a biased estimate of community prevalence. Though microbiological culture methods were frequently described in a reproducible manner, few studies reported quality control procedures, resulting in an assessment of moderate risk of bias for the majority of studies across this domain.

Overall ESBL-E colonisation prevalence was extremely heterogeneous across studies ranging from 5–84% (median 31%) with no trend by year of publication (Figure 3). Some heterogeneity was explained by location of sampling (Figure 4): inpatients tended to have the highest colonisation prevalence with community members the least. There was no clear difference in prevalence between neonates, children or adults (Figure 5). Pooled random-effect summary estimates were therefore calculated for differing location of sampling: community members (18% [95% CI 11–28%]), outpatients (23% [95% CI 13–39%]), inpatients on hospital admission (32% [95% CI 24–41%]) and inpatients (55% [95% CI 49–60%]), though in each stratum significant heterogeneity remained (I^2 76–97%) so these summary estimates should be treated with caution (Figure 4).

Two-thirds (21/32) of studies performed an analysis to identify factors associated with ESBL-E colonisation (Table 4). Prior hospitalisation was assessed as a risk factor in 13 studies, and a statistically significant association found in 4/13, with odds ratios of 2.1–8.5. Antimicrobial exposure was assessed in 13 studies, and a statistically significant association found in 5/13 with odds ratios of 1.6–27.0. Using water from a borehole²⁸, boiling water before drinking¹⁴ and having private inside access to drinking water¹⁰ were found to be associated with a lower prevalence of ESBL-E colonisation in three different studies. One study found that a higher socio-economic status was

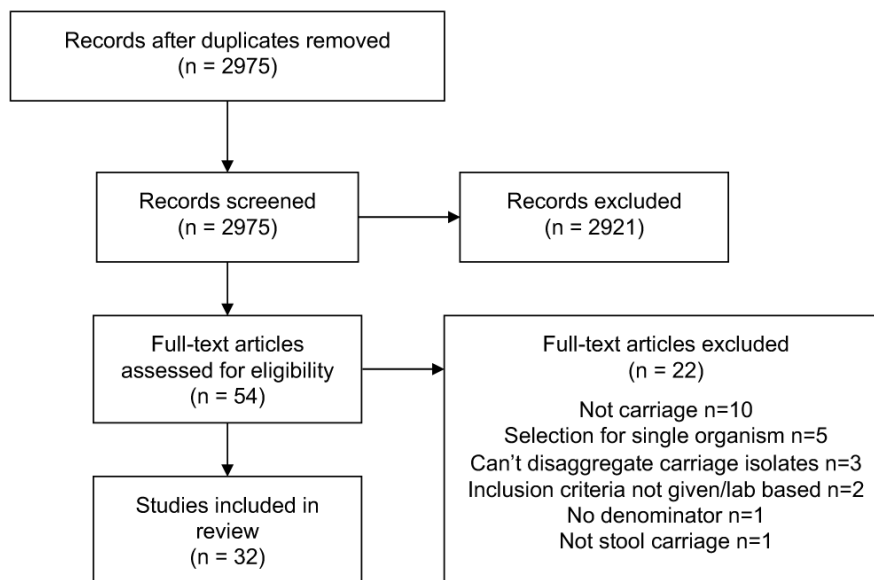


Figure 1. Flow chart of included studies.

Table 2. Details of included studies. CAR = Central African Republic; ART = antiretroviral therapy; UTI = urinary tract infection; NR = not reported. yr = year; m = months, d = days, hr = hours. * = mean rather than media.

Study	Year Pub.	Study Period	Country	Study Type	Inclusion Population: details	Age group	Median age	n
COMMUNITY STUDIES								
Albrechtova 2012	2012	2009	Kenya	Cross sec.	General population	Adults	NR	23
Mshana 2016	2016	2014	Tanzania	Cross sec.	General population	both	10yr	334
Katakweba 2018	2018	2011–13	Tanzania	Cross sec.	General population	Adults	NR	70
Ruppe 2009	2009	NR	Senegal	Cross sec.	Special population (remote villages)	Children	6.9yr*	20
Lonchel 2012	2012	2009	Cameroon	Cross sec.	Special population (students)	Adults	24.7yr*	150
Chereau 2015	2015	2013–14	Madagascar	Cross sec.	Special population (pregnant women)	Adults	26yr*	356
Farra 2016	2016	2013	CAR	Cross sec.	Special population (healthy controls in a diarrhoea study)	Children	10.5m	134
Ribeiro 2016	2016	2013	Angola	Cross sec.	Special population (no antibiotics/hospital exposure last 3 mo)	Adults	NR	
Tellevik 2016	2016	2010–11	Tanzania	Cross sec.	Special population: <2yr attending health centre for vaccine	Children	NR	250
Moremi 2017	2017	2015	Tanzania	Cross sec.	Special population (street children)	Children	14.2yr*	107
Chirindze 2018	2018	2016	Mozambique	Cross sec.	Special population (Students in the community)	Adults	NR	275
Sanneh 2018	2018	2015	The Gambia	Cross sec.	Special population (Food handlers in schools)	Adults	37yr*	565
HOSPITAL OUTPATIENTS								
Herindrainy 2011	2011	2009	Madagascar	Cross sec.	Outpatients	Adults	NR	306
Lonchel 2012	2012	2009	Cameroon	Cross sec.	Outpatients	Adults	36.9yr*	208
Magoue 2013	2013	2010	Cameroon	Cross sec.	Outpatients	Adults	NR	232
					Outpatients	Children	NR	147
Djuikoue 2016	2016	2011–12	Cameroon	Cross sec.	Special population (outpatient women with susp. UTI)	Adults	NR	86
Wilmore 2017	2017	2014–15	Zimbabwe	Cross sec.	Special population (outpatient, HIV infected, stable on ART)	Children	11yr	175
Herindrainy 2018	2018	2015–16	Madagascar	Cross sec.	Special population (Pregnant women at delivery)	Adults	26yr*	275
Stanley 2018	2018	2017	Uganda	Cross sec.	Special population (participants who reared animals, attending health facility with a fever and/or diarrhoea but without malaria)	both	21.7yr*	300
ON HOSPITAL ADMISSION								
Andriatahina 2010	2010	2008	Madagascar	Cohort	On hospital admission	Children	38.3m	244
Kurz 2016	2016	2014	Rwanda	Cohort	On hospital admission	both	29yr	753
Magwenzi 2017	2017	2015	Zimbabwe	Cohort	On hospital admission	Children	1.0yr	164
Founou 2018	2018	2017	South Africa	Cohort	On hospital admission	Adults	NR	43
Moremi 2018	2018	2014–15	Tanzania	Cohort	On hospital admission	Adults	NR	930
Woerther 2011	2011	2007–08	Niger	Cohort	Special population (Children with SAM)	Children	16.3m*	55
Isendahl 2012	2012	2010	Guinea-Bissau	Cross sec.	Special population (Children att. hospital w/ fever or tachycardia)	Children	NR	408
Nelson 2014	2014	2013	Tanzania	Cohort	Special population (Pregnant women and neonates, inpatient)	Neonate	0d	126
						Adults	26.5yr*	113

Study	Year Pub.	Study Period	Country	Study Type	Inclusion Population: details	Age group	Median age	n
INPATIENTS								
Lonchel 2013	2013	2009	Cameroon	Cross sec.	Inpatients	Adults	46.8yr*	121
Magoue 2013	2013	2010	Cameroon	Cross sec.	Inpatients	Adults	NR	208
Schaumburg 2013	2013	2010–11	Gabon	Cross sec.	Inpatients	Children	NR	200
Desta 2016	2016	2012	Ethiopia	Cross sec.	Inpatients	Adults	35yr	154
					Inpatients	Children	7yr	94
					Inpatients	Neonate	9d	19
Tellevik 2016	2016	2010–11	Tanzania	Cross sec.	Inpatients	Children	NR	353
Nikema Pessinaba 2018	2018	2015–16	Togo	Cross sec.	Special population (<5yr with febrile gastroenteritis)	Children	NR	81
Marando 2018	2018	2016	Tanzania	Cross sec.	Special population (Neonates with sepsis)	Neonate	6d	304
OTHER								
Tande 2009	2009	2003	Mali	Cross sec.	Orphanage children	Children	NR	38
					Orphanage staff	Adults	NR	30
Magoue 2013	2013	2010	Cameroon	Cross sec.	Hospital workers and their families	Adults	NR	87
					Relatives and carers of inpatients	Adults	NR	63

Table 3. Details of microbiologic testing procedures. NR = not reported; API = analytical profile index; MALDI-TOF = Matrix-Assisted Laser Desorption/Ionization-Time of Flight.

Study	Sample type	Screening method	Speciation method	ESBL confirmation method
Ruppe 2009	Stool	Drigalski and chromagar	NR	Double disc
Tande 2009	Stool	Drigalski with cephalosporin	API	Double disc
Andriatahina 2010	Rectal Swab	Drigalski with cephalosporin	API	Double disc
Herindrainsy 2011	Stool	Drigalski with cephalosporin	API	Double disc
Woerther 2011	Stool	Chromagar	API	PCR
Albrechtova 2012	Rectal Swab	Mackonkey with cephalosporin	API	Double disc
Isendahl 2012	Rectal Swab	Chromagar	Vitek	Vitek
Lonchel 2012	Stool	Mackonkey or Drigalski and cephalosporin	MALDI-TOF	Double disc
Lonchel 2013	Stool	Mackonkey or Drigalski and cephalosporin	MALDI-TOF	Double disc
Magoue 2013	Stool	Mackonkey or Drigalski and cephalosporin	NR	Double disc
Schaumburg 2013	Rectal Swab	Chromagar	Vitek	Double disc
Nelson 2014	Rectal Swab	Mackonkey with cephalosporin	Biochemical	Double disc
Chereau 2015	Stool	Drigalski with cephalosporin	API	Double disc
Desta 2016	Stool	Chromagar	Vitek	Vitek
Djuikoue 2016	Stool	Drigalski with cephalosporin	MALDI-TOF	Double disc
Farra 2016	Stool	Chromagar	NR	Double disc
Kurz 2016	Rectal Swab	Chromagar	API	Combination disc
Mshana 2016	Stool	Mackonkey with cephalosporin	API	Chromagar and vitek
Ribeiro 2016	Stool	Chromagar	MALDI-TOF	PCR
Tellevik, 2016	Stool	Chromagar	MALDI-TOF	Combination disc

Study	Sample type	Screening method	Speciation method	ESBL confirmation method
Magwenzi 2017	Stool or Rectal Swab	Chromagar and Mackonkey with cephalosporin and nutrient broth with cephalosporin	API	Double disc
Moremi 2017	Stool	Mackonkey with cephalosporin	Biochemical	Double disc
Wilmore 2017	Stool	CLEDwith cephalosproin	API and MALDI	Combination disc
Chirindze 2018	Stool	Mackonkey with cephalosporin	API	Double disc
Founou 2018	Rectal Swab	Mackonkey with cephalosporin	API	Combination disc
Herindrainy 2018	Stool or Rectal Swab	Chromagar	MALDI-TOF	Double disc
Katakweba 2018	Stool	Mackonkey with cephalosporin	MALDI-TOF	Double disc
Marando 2018	Rectal swab	Mackonkey with cephalosporin	Biochemical	Double disc
Moremi 2018	Rectal swab	Mackonkey with cephalosporin	vitek	vitek
Nikema Pessinaba 2018	Stool	Drigalski with cephalosporin	NR	NR
Sanneh 2018	Stool	Drigalski And Cephalosporin	NR	Double disc
Stanley 2018	Stool	AST	BD phoenix	BD phoenix

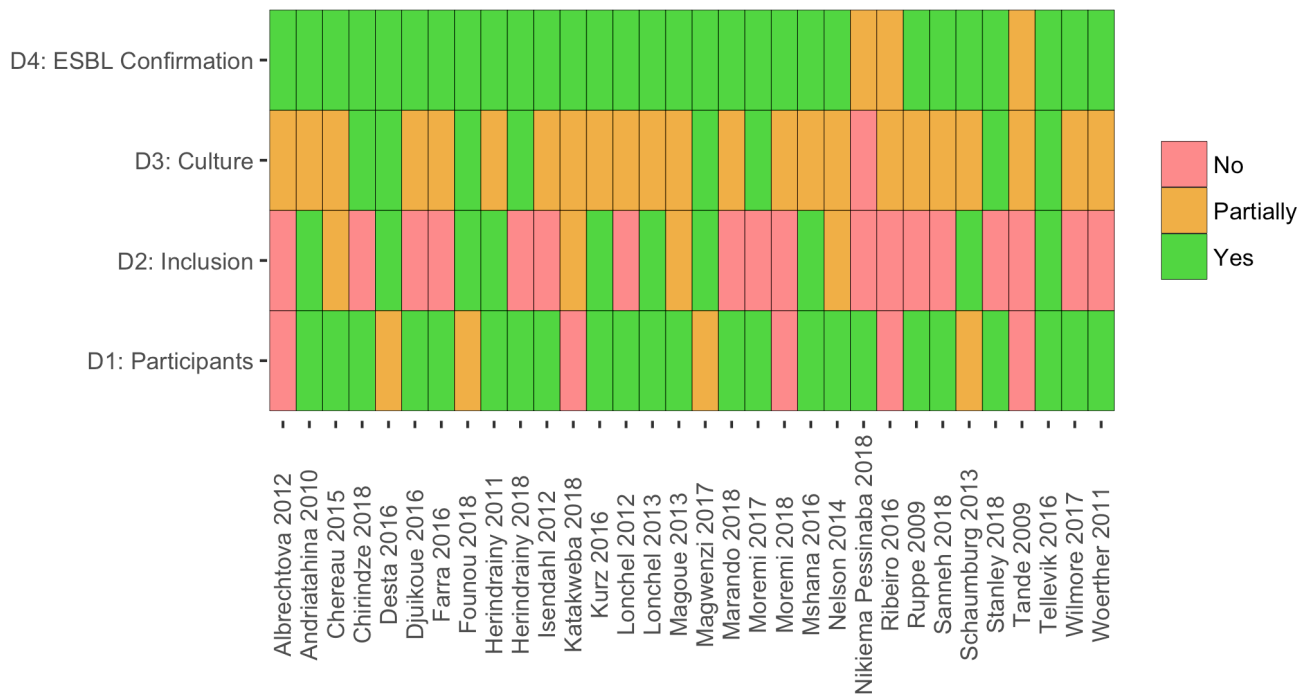


Figure 2. Results of risk of bias assessment. Domain 1: Are the characteristics of the participants included in the study adequately described? Domain 2: Are the eligibility criteria to enter the study explicit and appropriate? Domain 3: Were stool culture results precise and reported? Domain 4: Were the methods of extended-spectrum beta-lactamase (ESBL) confirmatory testing precise?

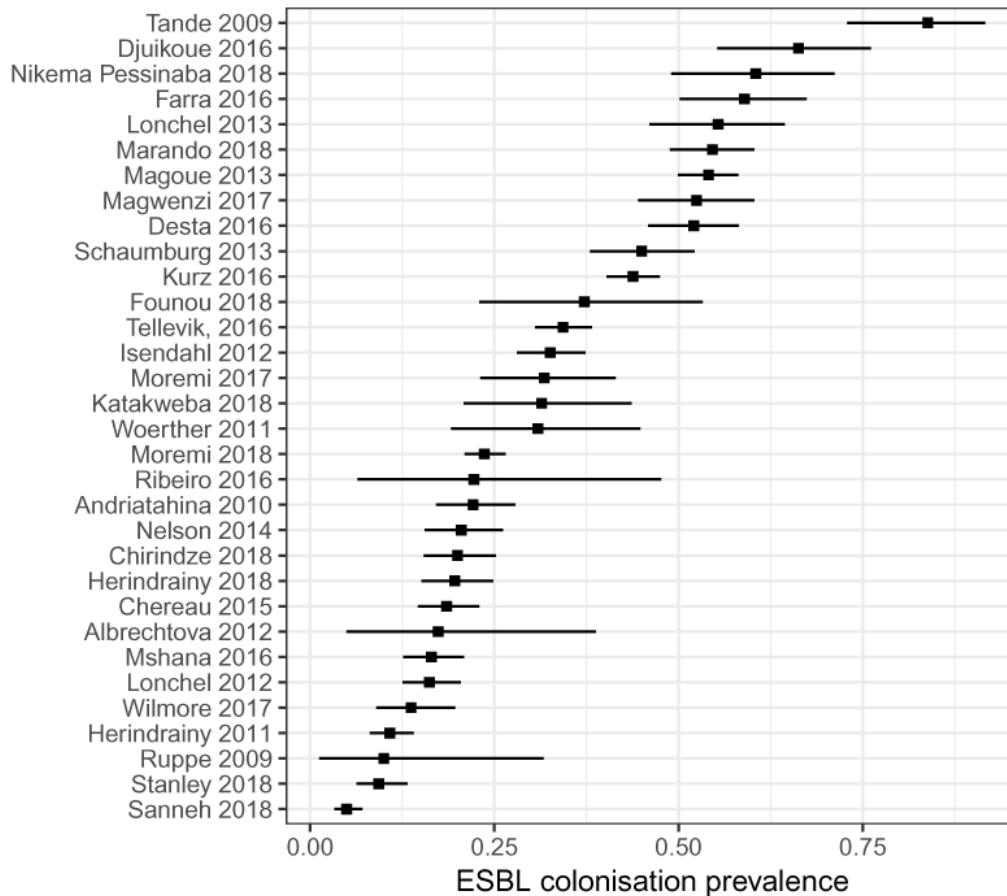


Figure 3. Overall extended-spectrum beta-lactamase producing Enterobacteriaceae (ESBL-E) colonization prevalence by study.

associated with a lower ESBL-E prevalence²⁹, and one the opposite¹³. Only two studies addressed the association between HIV status and ESBL-E colonisation status; one, in adults found no association⁹, whereas the other, in children, found a strong association¹⁷. Only one study assessed the association between animals in the home as ESBL-E colonisation¹⁰, finding no association.

Of the 6 cohort studies, all sampled participants on admission to hospital and on discharge, a median 5.6-8 days later, and all found an increase in ESBL-E colonisation prevalence between the two sampling points (Table 5). No study longitudinally sampled ESBL colonisation in the community, either in community dwellers or in those discharged from hospital.

Discussion

ESBL-E colonisation is common across sSA, though with significant unexplained heterogeneity between study locations and populations. Community ESBL-E colonisation ranges from 5% in adults in Gambia in 2015 to 59% in children in the Central African Republic in 2013, the latter comparable to the

highest described colonisation prevalence in the world⁵. Our pooled estimate suggests 18% (95% CI 11–29%) of people in sSA are colonised with ESBL-E, a higher prevalence than in high income settings. In Europe, community prevalence of ESBL-E colonisation is reported to range from 3.7% in Spain in 2004 to 7.3% in the UK in 2014^{38–41}, similar to the United States where a community prevalence of 3.4% was reported in healthy children⁴². In many of the estimates of studies included in this review, the reported prevalence of ESBL-E is more comparable to that reported in Asia (46% [95% CI 29–63%]⁵).

The profound differences in community ESBL-E colonisation prevalence between sSA and high-resource settings warrants further investigation, beyond the assessment of risk factors we have identified in this review. Hospitalisation and antimicrobial use are likely drivers of colonisation in the studies, with higher prevalence seen in hospitalised individuals and prior hospitalisation and antimicrobial exposure frequently identified as risk factors for colonisation. Obversely and consistent with a putative faecal-oral transmission route, use of borehole water, a private indoor water source and boiling water before drinking

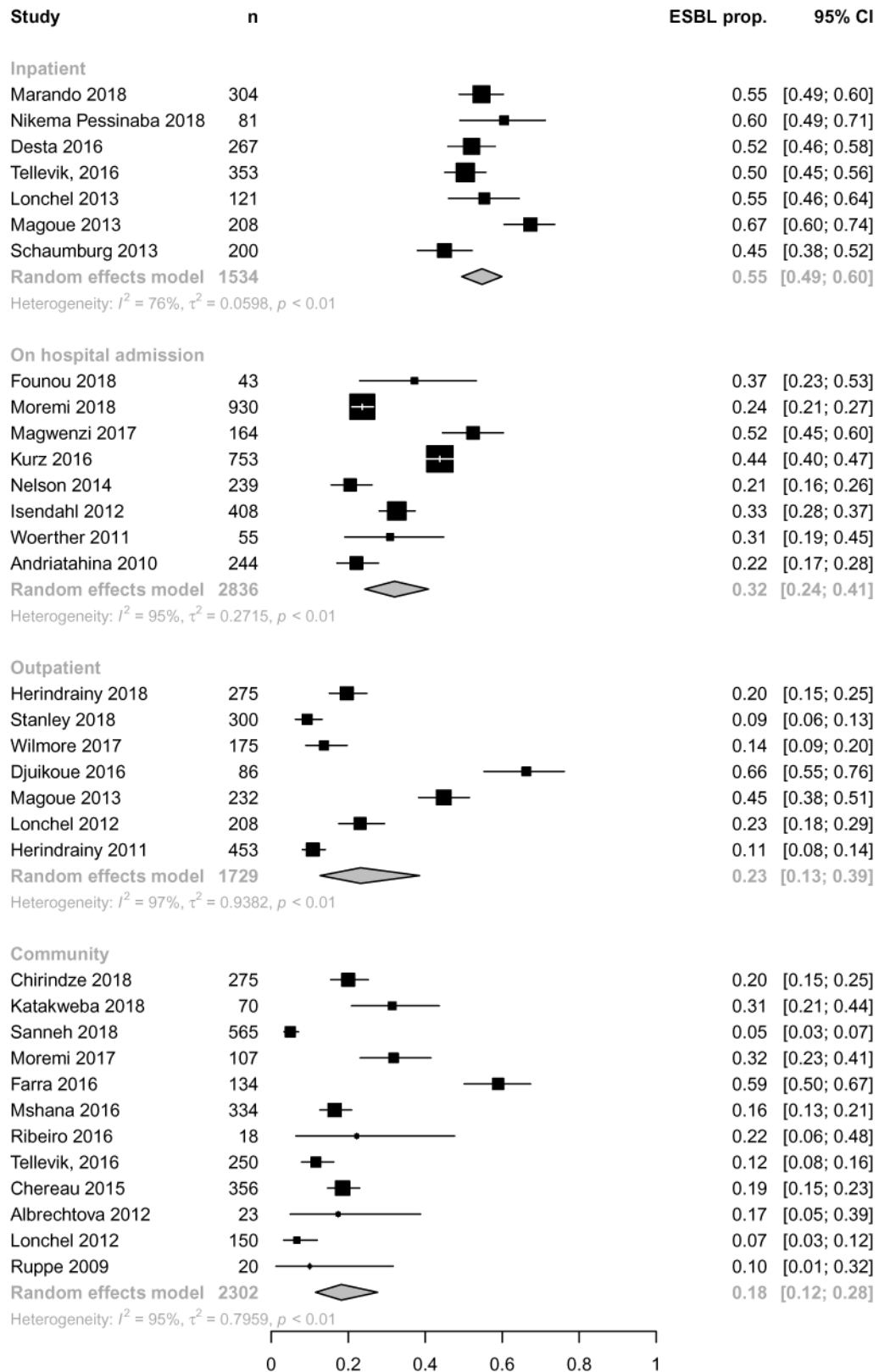


Figure 4. Extended-spectrum beta-lactamase (ESBL) colonisation by study with pooled random effect summary estimates stratified by location of sampling. ESBL prop. = proportion of ESBL producing Enterobacteriaceae.

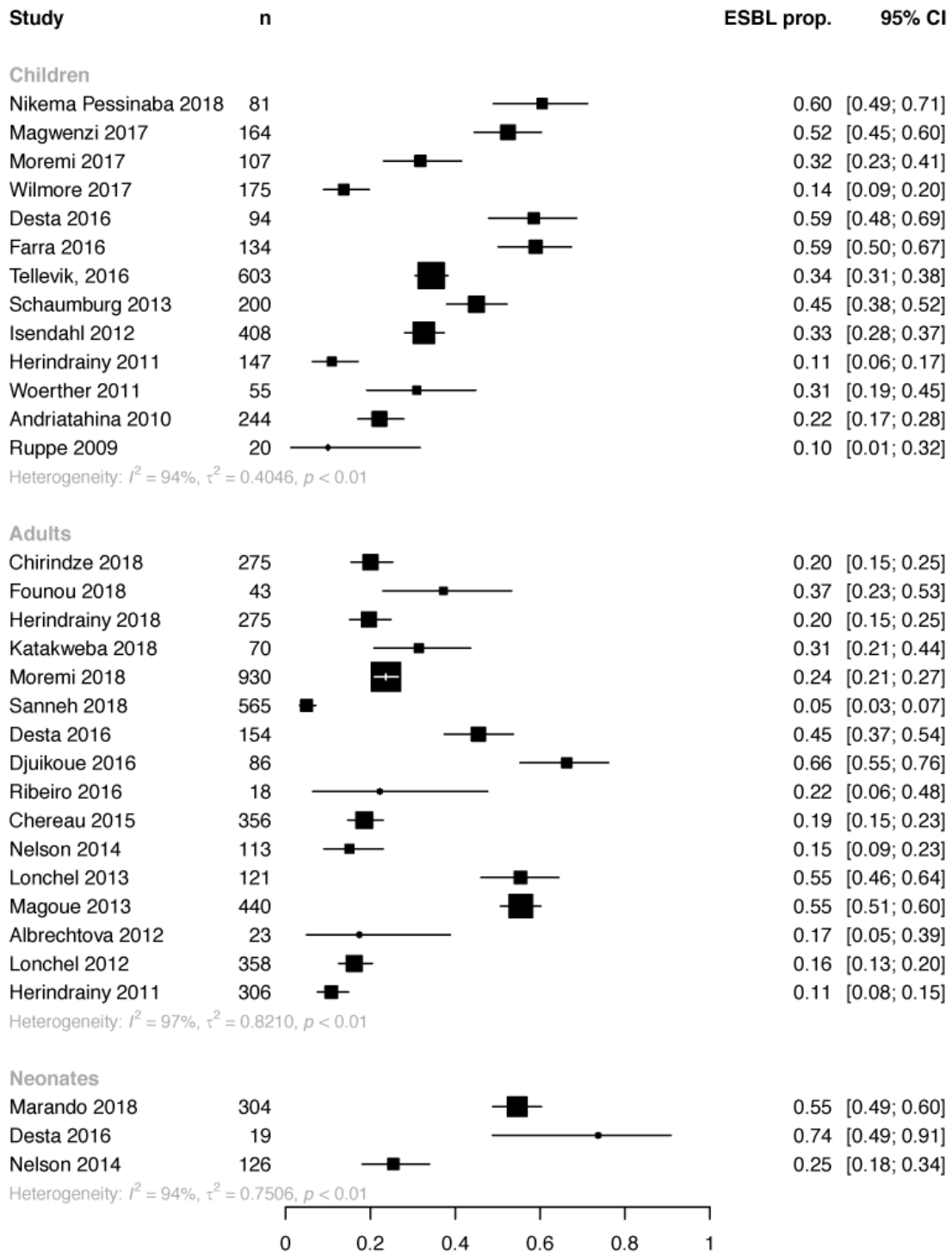


Figure 5. Extended-spectrum beta-lactamase producing Enterobacteriaceae (ESBL-E) carriage prevalence stratified by age group.

Table 4. Assessed and significant risk factors in the included studies. mv = multivariate, uv = univariate, HH = household, abx = antibiotics, SES = socio-economic status, HC = health centre, ART = antiretroviral therapy, VL = viral load, PROM = premature rupture of membranes, WASH = water, sanitation and hygiene. UTI = urinary tract infection, NR = not reported. * confidence interval crosses 1; original publication used fisher's exact test and found $p < 0.05$.

Study	Risk factors assessed	Analysis	Significant risk factors	Odds ratio (95% CI)
Tande 2009	Adults with direct contact with the children in orphanage	uv	Contact with orphanage children	19.7 (3.2 - 201.3)
Andriatahina 2010	Age, gender, patient origin (home vs health facility), abx or hospitalisation last 30days, admitting dx, infection on admission	mv	Hospitalisation last 30d	7.4 (2.9-18.3)
Herindrany 2011	SES, no. of rooms occupied, ratio occupants: room	mv	Occupation HH head unemployed vs manager	9.1 (1.6-53.9)
Isendahl 2012	Age, gender, weight, MUAC, breastfeeding, bedsharing, children in HH, abx, hospitalisation	uv	Bedsharing	1.9 (1.0 - 3.4)
Lonchel 2013	Age, gender, hospital, diagnosis, abx within 3m, hospitalisation within 1yr	mv	Hospitalisation during the previous year	4.13 (1.37–12.78)
			Admission with infection	0.30 (0.10–0.82)
			Intermediate vs tertiary hospital	4.10 (1.77–9.59)
Schaumburg 2013	Age, hospitalisation, residence, sex, diagnosis, abx use	mv	Age ≤ 5	2.2 (1.1–4.8)
			Hospitalization 5–7 days vs < 5	5.1 (1.6–18.4)
			Hospitalization for ≥ 7 days vs < 5	30.6 (5.8–566.0)
			Hospital stay during the past 12 months	2.1 (1.1–4.0)
Nelson 2014	For neonates: Gestation, birthweight, gender, delivery method, ward, abx use	uv	Antibiotic use	10.8 (0.6 - 186)*
	For mothers: Delivery mode, admission within 30d, abx within 3m, abx within 30d, current abx, catheter, HIV status		Nothing	
Chereau 2015	Study area, age, education, marital status, type house, electricity, type of birth attendant, toilets, water, animals at home, hospitalisation, abx use	mv	Private inside access to drinking water	0.3 (0.1–0.8)
Desta 2016	Higher maximum bed capacity per room, increasing number of patients admitted in single room	uv	Sharing room vs not	4.0 (2.3 to 5.3)
Djuikoue 2016	Age, pregnancy, abx last 3m, hospital last 3m	uv	None	
Farra 2016	Age, gender, comorbidity, SES, nutritional status, animals at home, toilets, urban/rural, hh members, meals	mv	Highest SES class vs lowest	31.06 (2.49–387.13)
Kurz 2016	Age, gender, residence, ward, referral, other healthcare 3m, abx 3m, education, SES, water source, food, time to HC, caregiver ESBL status	mv	ESBL colonised caregiver,	2.88 (1.80-4.61)
			Antibiotics within 3 months,	2.70 (1.59-4.58)
			Frequently consume eggs	6.52 (1.75-24.31)
			Boil water prior to drinking	0.59 (0.37-0.92)
Mshana 2016	Age, region, no of children in house, abx use within 1m, admission within 1yr	mv	Older age (per yr),	1.07 (1.04–1.10)
			Hospital admission last yr	7.4 (1.43–38.5)
			Abx last 3m	27 (6.63–116),
Tellevik, 2016	Age, gender, residence, parental education, child group, nutritional status, use of abx within 14 days	mv	HIV vs no HIV,	9.99 (2.52–39.57),
			Kinondoni district,	2.62 (1.49–4.60)
			Abx last 14d	1.61 (1.07–2.41)
Moremi 2017	Age, education, herb use, source of income, source of food, street child type	mv	Local herb use,	3.3 (1.31–8.31),
			Sleep on streets vs not	2.8 (1.04–7.65)

Study	Risk factors assessed	Analysis	Significant risk factors	Odds ratio (95% CI)
Wilmore 2017	Age, gender, CD4, VL, ART duration, admitted to hospital with pneumonia in last 12m, adm to hospital in at 12 m	mv	ART <1yr	8.47 (2.22–2.27)
			Admission with pneumonia in last 12m	8.47 (1.12–64.07)
Marando 2018	Age, gender, weight, admission where, clinical factors, abx use, PROM	mv	Current abx use	1.73 (1.00-2.97),
			ESBL colonised mother	2.19 (1.26-3.79)
Moremi 2018	Age, gender, history of antibiotic use, history of admission, history of surgery	mv	Older age (per year)	1.01 (1.00–1.02)
Nikema Pessinaba 2018	Age, gender, site, drinking water source, time to sample analysis	mv	Drink non borehole water vs borehole	3.47 (1.22-9.82)
Sanneh 2018	WASH behaviours, hospitalised within 3m, invasive procedures, abx within 3m, abx from street, completing abx, diarrhoea/UTI 3m, food handling training	uv	Lack of food handling training and knowledge of the principle of food safety	NR
			Abx within 3m	NR
Stanley 2018	Age, gender, health facility, presentation	uv	none	

Table 5. Longitudinal ESBL prevalence in included cohort studies. NR = not reported.
* = median not given but admission length was 2–10 days.

Study	Study population	ESBL prevalence		Median follow up
		Admission	Discharge	
Andriatahina 2010	Children	51/244 (21%)	88/154 (57%)	5.7d
Woerther 2011	Children	17/55 (31%)	15/16 (94%)	8d
Nelson 2014	Neonates	32/126 (25%)	77/126 (61%)	7d
Kurz 2016	Adults and children	195/392 (50%)	173/208 (83%)	6d
Magwenzi 2017	Children	86/164 (52%)	115/164 (70%)	5.6d
Moremi 2018	Adults	220/930 (24%)	143/272 (53%)	NR*

were associated with reduced ESBL-E colonisation risk, and it may be that poor water, sanitation and hygiene (WASH) infrastructure and practices in sSA are driving high ESBL-E colonisation prevalence. This speaks to a role for poverty in driving ESBL-E colonisation; however, this is likely complex, and context-dependant, as evidenced by conflicting findings of the effect of socio-economic status on colonisation from two studies in different settings.

More broadly, this review highlights areas where data that could inform interventions to interrupt ESBL-E transmission are lacking. In the community, long-term longitudinal ESBL-E colonisation studies are necessary to understand the dynamics of community ESBL-E transmission, particularly the role of within household transmission, and the role of household animals. In health facilities, the determinants of apparent ESBL-E acquisition need to be clearly identified to design pragmatic intervention studies in the context of limited resources. Surprisingly, the role of HIV in driving the high ESBL-E colonisation

prevalence in sSA is unknown. HIV is known to profoundly affect gut function, but we identified only two studies which have assessed HIV status as a risk factor for ESBL-E colonisation.

There are limitations of our review. Our search strategy may have missed studies that would otherwise be included. However, using broader inclusion criteria than a recent review of worldwide ESBL-E community colonisation prevalence⁵, we have identified many more studies from sSA. Risk of bias assessment in observational studies is difficult, with no gold standard, and the tool we have used may misclassify studies with regard to bias. Significant heterogeneity remaining despite stratification warrants caution in interpreting summary estimates.

In conclusion, ESBL-E colonisation in sSA is common, and in places comparable to the highest prevalence in the world, though with significant unexplained heterogeneity between countries and populations. Hospitalisation, antimicrobial use, and

poor WASH infrastructure and practices may be contributing to high prevalence; the roles of HIV and animal-human transmission remain unknown. Given the threat to human health of ESBL-E, data to fully characterise routes and drivers of transmission in sSA are necessary to design interventions to interrupt transmission in this setting.

Data availability

Underlying data

All data underlying the results are available as part of the article and no additional source data are required.

Extended data

Zenodo: Risk of bias tool and PRISMA checklist used for the publication: Gut mucosal colonisation with extended-spectrum

beta-lactamase producing Enterobacteriaceae in sub-Saharan Africa: a systematic review and meta-analysis, <http://doi.org/10.5281/zenodo.3478278>⁴³

This project contains the following extended data:

- Risk of bias tool used in the study

Reporting guidelines

Zenodo: PRISMA checklist for: Gut mucosal colonisation with extended-spectrum beta-lactamase producing Enterobacteriaceae in sub-Saharan Africa: a systematic review and meta-analysis, <http://doi.org/10.5281/zenodo.3478278>⁴³.

Data are available under the terms of the [Creative Commons Attribution 4.0 International license \(CC-BY 4.0\)](https://creativecommons.org/licenses/by/4.0/).

References

- World Health Organisation: **Prioritization of pathogens to guide discovery, research and development of new antibiotics for drug-resistant bacterial infections, including tuberculosis**. Geneva. 2017. [Reference Source](#)
- Musicha P, Cornick JE, Bar-Zeev N, *et al.*: **Trends in antimicrobial resistance in bloodstream infection isolates at a large urban hospital in Malawi (1998–2016): a surveillance study**. *Lancet Infect Dis*. 2017; 17(10): 1042–52. [PubMed Abstract](#) | [Publisher Full Text](#) | [Free Full Text](#)
- Denis B, Lafaurie M, Donay JL, *et al.*: **Prevalence, risk factors, and impact on clinical outcome of extended-spectrum beta-lactamase-producing *Escherichia coli* bacteraemia: a five-year study**. *Int J Infect Dis*. 2015; 39: 1–6. [PubMed Abstract](#) | [Publisher Full Text](#)
- Gorrie CL, Mirceta M, Wick RR, *et al.*: **Antimicrobial-Resistant *Klebsiella pneumoniae* Carriage and Infection in Specialized Geriatric Care Wards Linked to Acquisition in the Referring Hospital**. *Clin Infect Dis*. 2018; 67(2): 161–70. [PubMed Abstract](#) | [Publisher Full Text](#) | [Free Full Text](#)
- Karanika S, Karantanos T, Arvanitis M, *et al.*: **Fecal Colonization With Extended-spectrum Beta-lactamase-Producing Enterobacteriaceae and Risk Factors Among Healthy Individuals: A Systematic Review and Metaanalysis**. *Clin Infect Dis*. 2016; 63(3): 310–8. [PubMed Abstract](#) | [Publisher Full Text](#)
- Ruppé E, Woerther PL, Diop A, *et al.*: **Carriage of CTX-M-15-producing *Escherichia coli* isolates among children living in a remote village in Senegal**. *Antimicrob Agents Chemother*. 2009; 53(7): 3135–7. [PubMed Abstract](#) | [Publisher Full Text](#) | [Free Full Text](#)
- Tandé D, Jallot N, Bougoudogo F, *et al.*: **Extended-spectrum beta-lactamase-producing Enterobacteriaceae in a Malian orphanage**. *Emerg Infect Dis*. 2009; 15(3): 472–4. [PubMed Abstract](#) | [Publisher Full Text](#) | [Free Full Text](#)
- Schaumburg F, Alabi A, Kokou C, *et al.*: **High burden of extended-spectrum β -lactamase-producing Enterobacteriaceae in Gabon**. *J Antimicrob Chemother*. 2013; 66(9): 2140–3. [PubMed Abstract](#) | [Publisher Full Text](#)
- Nelson E, Kayega J, Seni J, *et al.*: **Evaluation of existence and transmission of extended spectrum beta lactamase producing bacteria from post-delivery women to neonates at Bugando Medical Center, Mwanza-Tanzania**. *BMC Res Notes*. 2014; 7: 279. [PubMed Abstract](#) | [Publisher Full Text](#) | [Free Full Text](#)
- Chereau F, Herindrainy P, Garin B, *et al.*: **Colonization of extended-spectrum- β -lactamase- and NDM-1-producing Enterobacteriaceae among pregnant women in the community in a low-income country: a potential reservoir for transmission of multiresistant Enterobacteriaceae to neonates**. *Antimicrob Agents Chemother*. 2015; 59(6): 3652–5. [PubMed Abstract](#) | [Publisher Full Text](#) | [Free Full Text](#)
- Desta K, Woldeamanuel Y, Azazh A, *et al.*: **High Gastrointestinal Colonization Rate with Extended-Spectrum β -Lactamase-Producing Enterobacteriaceae in Hospitalized Patients: Emergence of Carbapenemase-Producing *K. pneumoniae* in Ethiopia**. *PLoS One*. 2016; 11(8): e0161685. [PubMed Abstract](#) | [Publisher Full Text](#) | [Free Full Text](#)
- Djuikoue IC, Woerther PL, Toukam M, *et al.*: **Intestinal carriage of Extended Spectrum Beta-Lactamase producing *E. coli* in women with urinary tract infections, Cameroon**. *J Infect Dev Ctries*. 2016; 10(10): 1135–9. [PubMed Abstract](#) | [Publisher Full Text](#)
- Farra A, Frank T, Tondeur L, *et al.*: **High rate of faecal carriage of extended-spectrum β -lactamase-producing Enterobacteriaceae in healthy children in Bangui, Central African Republic**. *Clin Microbiol Infect*. 2016; 22(10): 891.e1–891.e4. [PubMed Abstract](#) | [Publisher Full Text](#)
- Kurz MS, Bayingana C, Ndoli JM, *et al.*: **Intense pre-admission carriage and further acquisition of ESBL-producing Enterobacteriaceae among patients and their caregivers in a tertiary hospital in Rwanda**. *Trop Med Int Heal*. 2017; 22(2): 210–20. [PubMed Abstract](#) | [Publisher Full Text](#)
- Mshana SE, Falgenhauer L, Mirambo MM, *et al.*: **Predictors of *bla*_{CTX-M-15} in varieties of *Escherichia coli* genotypes from humans in community settings in Mwanza, Tanzania**. *BMC Infect Dis*. 2016; 16: 187. [PubMed Abstract](#) | [Publisher Full Text](#) | [Free Full Text](#)
- Ribeiro TG, Novais Á, Peixe L, *et al.*: **Atypical epidemiology of CTX-M-15 among Enterobacteriaceae from a high diversity of non-clinical niches in Angola**. *J Antimicrob Chemother*. 2016; 71(5): 1169–73. [PubMed Abstract](#) | [Publisher Full Text](#)
- Tellevik MG, Blomberg B, Kommedal Ø, *et al.*: **High Prevalence of Faecal Carriage of ESBL-Producing Enterobacteriaceae among Children in Dar es Salaam, Tanzania**. *PLoS One*. 2016; 11(12): e0168024. [PubMed Abstract](#) | [Publisher Full Text](#) | [Free Full Text](#)
- Andriatahina T, Randrianirina F, Hariniana ER, *et al.*: **High prevalence of fecal carriage of extended-spectrum beta-lactamase-producing *Escherichia coli* and *Klebsiella pneumoniae* in a pediatric unit in Madagascar**. *BMC Infect Dis*. 2010; 10: 204. [PubMed Abstract](#) | [Publisher Full Text](#) | [Free Full Text](#)
- Magwenzi MT, Gudza-Mugabe M, Mujuru HA, *et al.*: **Carriage of antibiotic-resistant Enterobacteriaceae in hospitalised children in tertiary hospitals in Harare, Zimbabwe**. *Antimicrob Resist Infect Control*. 2017; 6: 10. [PubMed Abstract](#) | [Publisher Full Text](#) | [Free Full Text](#)
- Moremi N, Claus H, Vogel U, *et al.*: **Faecal carriage of CTX-M extended-spectrum beta-lactamase-producing Enterobacteriaceae among street children dwelling in Mwanza city, Tanzania**. *PLoS One*. 2017; 12(9): e0184592. [PubMed Abstract](#) | [Publisher Full Text](#) | [Free Full Text](#)
- Wilmore SMS, Kranzer K, Williams A, *et al.*: **Carriage of extended-spectrum beta-lactamase-producing Enterobacteriaceae in HIV-infected children in Zimbabwe**. *J Med Microbiol*. 2017; 66(5): 609–15. [PubMed Abstract](#) | [Publisher Full Text](#) | [Free Full Text](#)
- Chirindze LM, Zimba TF, Sekyere JO, *et al.*: **Faecal colonization of *E. coli* and *Klebsiella* spp. producing extended-spectrum beta-lactamases and plasmid-mediated AmpC in Mozambican university students**. *BMC Infect Dis*. 2018; 18(1): 244. [PubMed Abstract](#) | [Publisher Full Text](#) | [Free Full Text](#)
- Founou RC, Founou LL, Essack SY: **Extended spectrum beta-lactamase mediated resistance in carriage and clinical gram-negative ESKAPE bacteria: a comparative study between a district and tertiary hospital in South Africa**.

- Antimicrob Resist Infect Control*. 2018; 7: 134.
[PubMed Abstract](#) | [Publisher Full Text](#) | [Free Full Text](#)
24. Herindrainy P, Rabenandrasana MAN, Andrianirina ZZ, *et al.*: **Acquisition of extended spectrum beta-lactamase-producing enterobacteriaceae in neonates: A community based cohort in Madagascar.** *PLoS One*. 2018; 13(3): e0193325.
[PubMed Abstract](#) | [Publisher Full Text](#) | [Free Full Text](#)
 25. Katakweba AAS, Muhairwa AP, Lupindu AM, *et al.*: **First Report on a Randomized Investigation of Antimicrobial Resistance in Fecal Indicator Bacteria from Livestock, Poultry, and Humans in Tanzania.** *Microb Drug Resist*. 2018; 24(3): 260–8.
[PubMed Abstract](#) | [Publisher Full Text](#)
 26. Marando R, Seni J, Mirambo MM, *et al.*: **Predictors of the extended-spectrum-beta lactamases producing Enterobacteriaceae neonatal sepsis at a tertiary hospital, Tanzania.** *Int J Med Microbiol*. 2018; 308(7): 803–11.
[PubMed Abstract](#) | [Publisher Full Text](#) | [Free Full Text](#)
 27. Moremi N, Claus H, Rutta L, *et al.*: **High carriage rate of extended-spectrum beta-lactamase-producing Enterobacteriaceae among patients admitted for surgery in Tanzanian hospitals with a low rate of endogenous surgical site infections.** *J Hosp Infect*. 2018; 100(1): 47–53.
[PubMed Abstract](#) | [Publisher Full Text](#)
 28. Nikiema Pessinaba C, Landoh DE, Dossim S, *et al.*: **Screening for extended-spectrum beta-lactamase-producing Enterobacteriaceae intestinal carriage among children aged under five in Lomé, Togo.** *Med Mal Infect*. 2018; 48(8): 551–4.
[PubMed Abstract](#) | [Publisher Full Text](#)
 29. Herindrainy P, Randrianirina F, Ratovoson R, *et al.*: **Rectal carriage of extended-spectrum beta-lactamase-producing gram-negative bacilli in community settings in Madagascar.** *PLoS One*. 2011; 6(7): e22738.
[PubMed Abstract](#) | [Publisher Full Text](#) | [Free Full Text](#)
 30. Sanneh B, Kebbeh A, Jallow HS, *et al.*: **Prevalence and risk factors for faecal carriage of Extended Spectrum β -lactamase producing Enterobacteriaceae among food handlers in lower basic schools in West Coast Region of The Gambia.** *PLoS One*. 2018; 13(8): e0200894.
[PubMed Abstract](#) | [Publisher Full Text](#) | [Free Full Text](#)
 31. Stanley IJ, Kajumbula H, Bazira J, *et al.*: **Multidrug resistance among *Escherichia coli* and *Klebsiella pneumoniae* carried in the gut of out-patients from pastoralist communities of Kasese district, Uganda.** *PLoS One*. 2018; 13(7):
[PubMed Abstract](#) | [Publisher Full Text](#) | [Free Full Text](#)
 32. Woerther PL, Angebault C, Jacquier H, *et al.*: **Massive increase, spread, and exchange of extended spectrum β -lactamase-encoding genes among intestinal *Enterobacteriaceae* in hospitalized children with severe acute malnutrition in Niger.** *Clin Infect Dis*. 2011; 53(7): 677–85.
[PubMed Abstract](#) | [Publisher Full Text](#)
 33. Albrechtova K, Dolejska M, Cizek A, *et al.*: **Dogs of nomadic pastoralists in northern Kenya are reservoirs of plasmid-mediated cephalosporin- and quinolone-resistant *Escherichia coli*, including pandemic clone B2-O25-ST131.** *Antimicrob Agents Chemother*. 2012; 56(7): 4013–7.
[PubMed Abstract](#) | [Publisher Full Text](#) | [Free Full Text](#)
 34. Isendahl J, Turlej-Rogacka A, Manjuba C, *et al.*: **Fecal carriage of ESBL-producing *E. coli* and *K. pneumoniae* in children in Guinea-Bissau: a hospital-based cross-sectional study.** *PLoS One*. 2012; 7(12): e51981.
[PubMed Abstract](#) | [Publisher Full Text](#) | [Free Full Text](#)
 35. Lonchel CM, Meex C, Gangoué-Piéboji J, *et al.*: **Proportion of extended-spectrum β -lactamase-producing *Enterobacteriaceae* in community setting in Ngoundere, Cameroon.** *BMC Infect Dis*. 2012; 12: 53.
[PubMed Abstract](#) | [Publisher Full Text](#) | [Free Full Text](#)
 36. Lonchel CM, Melin P, Gangoué-Piéboji J, *et al.*: **Extended-spectrum β -lactamase-producing *Enterobacteriaceae* in Cameroonian hospitals.** *Eur J Clin Microbiol Infect Dis*. 2013; 32(1): 79–87.
[PubMed Abstract](#) | [Publisher Full Text](#)
 37. Magoué CL, Melin P, Gangoué-Piéboji J, *et al.*: **Prevalence and spread of extended-spectrum β -lactamase-producing *Enterobacteriaceae* in Ngoundere, Cameroon.** *Clin Microbiol Infect*. 2013; 19(9): E416–20.
[PubMed Abstract](#) | [Publisher Full Text](#)
 38. McNulty CAM, Lecky DM, Xu-McCrae L, *et al.*: **CTX-M ESBL-producing *Enterobacteriaceae*: estimated prevalence in adults in England in 2014.** *J Antimicrob Chemother*. 2018; 73(5): 1368–88.
[PubMed Abstract](#) | [Publisher Full Text](#) | [Free Full Text](#)
 39. Wielders CCH, van Hoek AHAM, Hengeveld PD, *et al.*: **Extended-spectrum β -lactamase- and pAmpC-producing *Enterobacteriaceae* among the general population in a livestock-dense area.** *Clin Microbiol Infect*. 2017; 23(2): 120.e1–120.e8.
[PubMed Abstract](#) | [Publisher Full Text](#)
 40. Ny S, Löfmark S, Börjesson S, *et al.*: **Community carriage of ESBL-producing *Escherichia coli* is associated with strains of low pathogenicity: a Swedish nationwide study.** *J Antimicrob Chemother*. 2017; 72(2): 582–8.
[PubMed Abstract](#) | [Publisher Full Text](#)
 41. Valverde A, Coque TM, Sanchez-Moreno MP, *et al.*: **Dramatic increase in prevalence of fecal carriage of extended-spectrum beta-lactamase-producing *Enterobacteriaceae* during nonoutbreak situations in Spai.** *J Clin Microbiol*. 2004; 42(10): 4769–75.
[PubMed Abstract](#) | [Publisher Full Text](#) | [Free Full Text](#)
 42. Islam S, Selvarangan R, Kanwar N, *et al.*: **Intestinal Carriage of Third-Generation Cephalosporin-Resistant and Extended-Spectrum β -Lactamase-Producing *Enterobacteriaceae* in Healthy US Children.** *J Pediatric Infect Dis Soc*. 2018; 7(3): 234–240.
[PubMed Abstract](#) | [Publisher Full Text](#) | [Free Full Text](#)
 43. Lewis JM, Lester R, Garner P, *et al.*: **Risk of bias tool used for the publication: Gut mucosal colonisation with extended-spectrum beta-lactamase producing *Enterobacteriaceae* in sub-Saharan Africa: a systematic review and meta-analysis (Version v1.0).** *Zenodo*. 2019.
<http://www.doi.org/10.5281/zenodo.3478278>

Open Peer Review

Current Peer Review Status:  

Version 1

Reviewer Report 10 January 2020

<https://doi.org/10.21956/wellcomeopenres.16981.r37453>

© 2020 Richard V. This is an open access peer review report distributed under the terms of the [Creative Commons Attribution License](#), which permits unrestricted use, distribution, and reproduction in any medium, provided the original work is properly cited.



Vincent Richard 

International Department, Institut Pasteur, Paris, France

Among the targets of the AntiMicrobial Resistance, ESBL-producing Enterobacteriaceae are a real worldwide issue not well-studied in Africa. The previous review of Storberg (2014¹) showed ESBL-producing Enterobacteriaceae are a large problem in African healthcare institutions and communities. However, this author highlighted the scarcity of African data about this topic. This new review shows the same trend with only 32 considered studies from 19 countries and among them 15 studies from 3 countries (Tanzania, Madagascar, and Cameroon).

"Inclusion criteria were any prospective cross-sectional or cohort study that had screened for gut mucosal colonization of ESBL-E in any population in sSA for which it was possible to extract a numerator and denominator to calculate an ESBL-E colonization prevalence." Is that enough to explain that only 32 studies to 2975 were included? These results ask about other countries' lab capacities and about the quality of some works: 2975 identified and 32 included. Does that mean 2943 studies were laboratory-based studies?

However, the methodology seems to be strong. The risk of bias was included and figure 2 a good way to assess the studies. Could we imagine from this review some proposals for better-implementing studies about this topic, leading to facilitating comparison between countries?

About prevalence and risk factors the authors seem to be surprised by differences between countries but it is a picture of the high diversity of the Africa region. Once, higher socio-economic status will be a protector because of sanitation and in another country this status will be a risk factor because the load of antimicrobial exposure will be more serious.

Because of the design of the studies included in this review, the livestock transmission is not evocated as one of the such risk factors. In discussion, the authors should have to point to the lack of studies concerning assessment of risk from livestock.

Undoubtedly, the most relevant intervention to reduce the carriage of ESBL-E will be the systematic implementation of WASH infrastructures. However, this kind of intervention will need to be assessed for convincing decision-makers to involve themselves in this strategy.

References

1. Storberg V: ESBL-producing Enterobacteriaceae in Africa - a non-systematic literature review of research published 2008-2012. *Infect Ecol Epidemiol.* 2014; **4**. [PubMed Abstract](#) | [Publisher Full Text](#)

Are the rationale for, and objectives of, the Systematic Review clearly stated?

Yes

Are sufficient details of the methods and analysis provided to allow replication by others?

Partly

Is the statistical analysis and its interpretation appropriate?

Yes

Are the conclusions drawn adequately supported by the results presented in the review?

Yes

Competing Interests: No competing interests were disclosed.

Reviewer Expertise: Epidemiology

I confirm that I have read this submission and believe that I have an appropriate level of expertise to confirm that it is of an acceptable scientific standard.

Reviewer Report 06 November 2019

<https://doi.org/10.21956/wellcomeopenres.16981.r36859>

© 2019 Kariuki S. This is an open access peer review report distributed under the terms of the [Creative Commons Attribution License](#), which permits unrestricted use, distribution, and reproduction in any medium, provided the original work is properly cited.



Samuel Kariuki 

Centre for Microbiology Research, Kenya Medical Research Institute (KEMRI), Nairobi, Kenya

Extended spectrum beta-lactamase (ESBL) producing enteric pathogens are a major cause of hospitalization and mortality in sub-Saharan Africa (SSA), more so because alternative options for effective treatment of infections are either too expensive to afford or are completely unavailable in these settings. I believe this review is timely as it provides information on the extent to which data from the region could provide insight into the extent of gut mucosal colonization (a precursor for invasive disease when immune-suppression may happen) and ensure that we institute policies that effectively reduce colonization and control of infections in these settings.

The authors observed a rather disturbing trend in data spread across the continent as only a meager 32 studies could qualify to have had data on gut colonization and ESBL testing done. Indeed only 6 of these studies followed up patients beyond the hospital discharge. The authors observed that antimicrobial use was associated with increased risk of ESBL-E colonization, and protected water sources or water treatment by boiling may reduce risk in affected patients.

The authors did their best to review all available data to answer their key review questions. The methodology was robust and systematic, and the analysis is complex but easy to follow. The major weakness in this review (which is really non-methodological) is the small number of studies available for the large population of SSA and for which major conclusions to be drawn from such a small sample size would be greatly flawed. There is no doubt that gut mucosal colonization with ESBL-producing gut pathogens plays a major role as a risk factor for invasive disease in hospitalized patients, this has been shown in studies in other parts of the world and such evidence is therefore crucial to compare with SSA. The poor implementation of WaSH in communities and Infection Prevention and control (IPC) strategies in healthcare settings certainly add to the challenges associated with prevention of gut-associated mucosal colonization with ESBL-producing bacteria. It is crucial that the authors clearly indicate the major flaw with the conclusion especially as it is based on a rather small and thinly spread number of studies in SSA. Although HIV and the role of livestock transmission of these zoonotic pathogens in studies in SSA was inconclusive, the fact that the studies reviewed may not necessarily have had these as study objectives cannot be ruled out. Interpretation of such review data should be therefore done with caution especially pertaining to possible key risk factors in disease transmission and gut colonization.

Are the rationale for, and objectives of, the Systematic Review clearly stated?

Yes

Are sufficient details of the methods and analysis provided to allow replication by others?

Yes

Is the statistical analysis and its interpretation appropriate?

Yes

Are the conclusions drawn adequately supported by the results presented in the review?

Yes

Competing Interests: No competing interests were disclosed.

Reviewer Expertise: Epidemiology and genomics of enteric pathogens and antimicrobial resistance

I confirm that I have read this submission and believe that I have an appropriate level of expertise to confirm that it is of an acceptable scientific standard.
