

CORRECTION

Open Access



# Correction to: TOPK promotes metastasis of esophageal squamous cell carcinoma by activating the Src/GSK3 $\beta$ /STAT3 signaling pathway via $\gamma$ -catenin

Yanan Jiang<sup>1,2,3</sup>, Jing Zhang<sup>1,3</sup>, Jimin Zhao<sup>1,2,3</sup>, Zhenzhen Li<sup>1</sup>, Hanyong Chen<sup>4</sup>, Yan Qiao<sup>1,2,3</sup>, Xinhuan Chen<sup>1,2,3</sup>, Kangdong Liu<sup>1,2,3,5\*</sup> and Ziming Dong<sup>1,2,3\*</sup>

## Correction to: BMC Cancer

<https://doi.org/10.1186/s12885-019-6453-z>

Following publication of the original article [1], the authors reported errors in Fig. 1 C and D, Fig. 2, Fig. 4 B and C and Fig. 6 D and E.

In Fig. 1 C and D, the cell lines are different, it should be as follow:

c) Western blotting analysis of TOPK expression in different ESCC cell lines. d) Relative expression of TOPK in different ESCC cell lines compared to the KYSE450 cell line.

The updated Fig. 1 C and D is supplied below.

In Fig. 2, Fig. 4 B and C, Fig. 6 D and E, the cell lines were mislabeled. EC9706 should be instead of KYSE510, TE13 should be instead of KYSE30.

## Author details

<sup>1</sup>Department of Pathophysiology, School of Basic Medical Sciences, Zhengzhou University, Zhengzhou 450001, China. <sup>2</sup>Henan Provincial Cooperative Innovation Center for Cancer Chemoprevention, Zhengzhou 450001, China. <sup>3</sup>State Key Laboratory of Esophageal Cancer Prevention and Treatment, Zhengzhou University, Zhengzhou 450052, China. <sup>4</sup>The Hormel Institute, Minnesota University, Austin, MN 55912, USA. <sup>5</sup>The China-US (Henan) Hormel Cancer Institute, Zhengzhou 450008, China.

The original article can be found online at <https://doi.org/10.1186/s12885-019-6453-z>

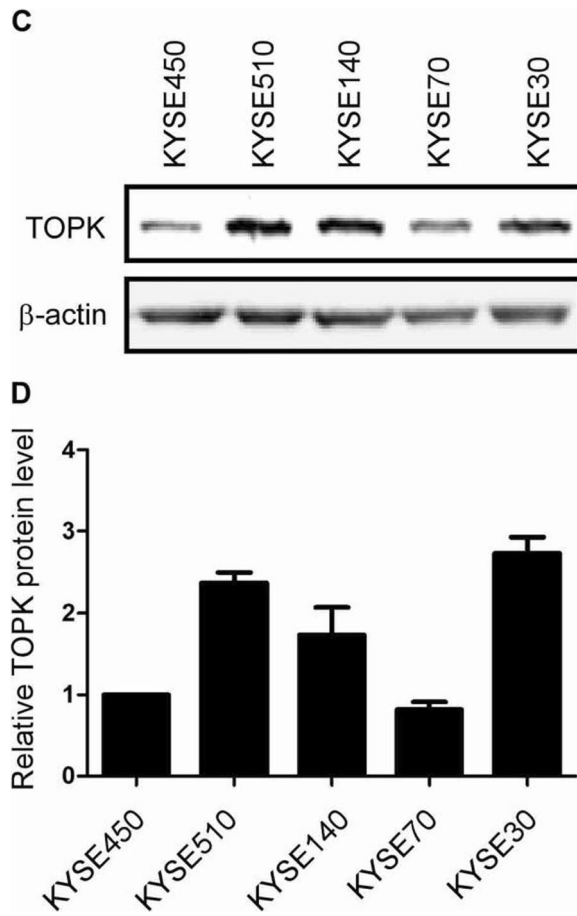
\* Correspondence: [kangdongliu@126.com](mailto:kangdongliu@126.com); [dongzm@zzu.edu.cn](mailto:dongzm@zzu.edu.cn)

<sup>1</sup>Department of Pathophysiology, School of Basic Medical Sciences, Zhengzhou University, Zhengzhou 450001, China

Full list of author information is available at the end of the article



© The Author(s). 2020 **Open Access** This article is distributed under the terms of the Creative Commons Attribution 4.0 International License (<http://creativecommons.org/licenses/by/4.0/>), which permits unrestricted use, distribution, and reproduction in any medium, provided you give appropriate credit to the original author(s) and the source, provide a link to the Creative Commons license, and indicate if changes were made. The Creative Commons Public Domain Dedication waiver (<http://creativecommons.org/publicdomain/zero/1.0/>) applies to the data made available in this article, unless otherwise stated.



Published online: 20 January 2020

**Reference**

1. Jiang, et al. TOPK promotes metastasis of esophageal squamous cell carcinoma by activating the Src/GSK3 $\beta$ /STAT3 signaling pathway via  $\gamma$ -catenin. *BMC Cancer*. 2019;19:1264 <https://doi.org/10.1186/s12885-019-6453-z>.