



Contents lists available at ScienceDirect

EBioMedicine

journal homepage: www.elsevier.com/locate/ebiom

Corrigendum

Corrigendum to ‘Inhibition of HDACs-EphA2 signaling axis with WW437 demonstrates promising preclinical antitumor activity in breast cancer’ [EBioMedicine 31 (2018) 276–286]



Tao Zhang^{a,b,*,1}, Jingjie Li^{c,1}, Xiaojun Ma^{a,1}, Yang Yang^d, Wei Sun^a, Wangrui Jin^d, Lei Wang^a, Yuan He^d, Feifei Yang^e, Zhengfang Yi^d, Yingqi Hua^{a,b}, Mingyao Liu^{d,f}, Yihua Chen^{d,**}, Zhengdong Cai^{a,b,*}

^a Department of Orthopedics, Shanghai General Hospital, Shanghai Jiao Tong University School of Medicine, Shanghai 200080, China

^b Shanghai Bone Tumor Institution, Shanghai 201620, China

^c Institute of Translational Medicine, Shanghai General Hospital, Shanghai Jiao Tong University School of Medicine, Shanghai 200080, China

^d Shanghai Key Laboratory of Regulatory Biology, Institute of Biomedical Sciences, School of Life Sciences, East China Normal University, 500 Dongchuan Road, Shanghai 200241, China

^e School of biological science and technology, University of Jinan, Jinan, Shandong Province 250022, China

^f Center for Cancer and Stem Cell Biology, Institute of Biosciences and Technology, Texas A&M University Health Science Center, Houston, TX 77030, USA

The published version of this article contained an error in Fig. 2c and f, the corrected Fig. 2 is included below, the authors declare that the corrections do not change the results or conclusions of this paper and apologize for any inconvenience this may have caused.

DOI of original article: <http://dx.doi.org/10.1016/j.ebiom.2018.05.003>.

* Corresponding authors at: Department of Orthopedics, Shanghai General Hospital, Shanghai Jiao Tong University School of Medicine, Shanghai 200080, China.

** Corresponding author.

E-mail addresses: zhangtaoabc@2008.sina.com (T. Zhang), yhchen@bio.ecnu.edu.cn (Y. Chen), caizhengdong@sjtu.edu.cn (Z. Cai).

¹ These authors contributed equally to this work.

<https://doi.org/10.1016/j.ebiom.2020.102629>

2352-3964/© 2020 The Author(s). Published by Elsevier B.V. All rights reserved

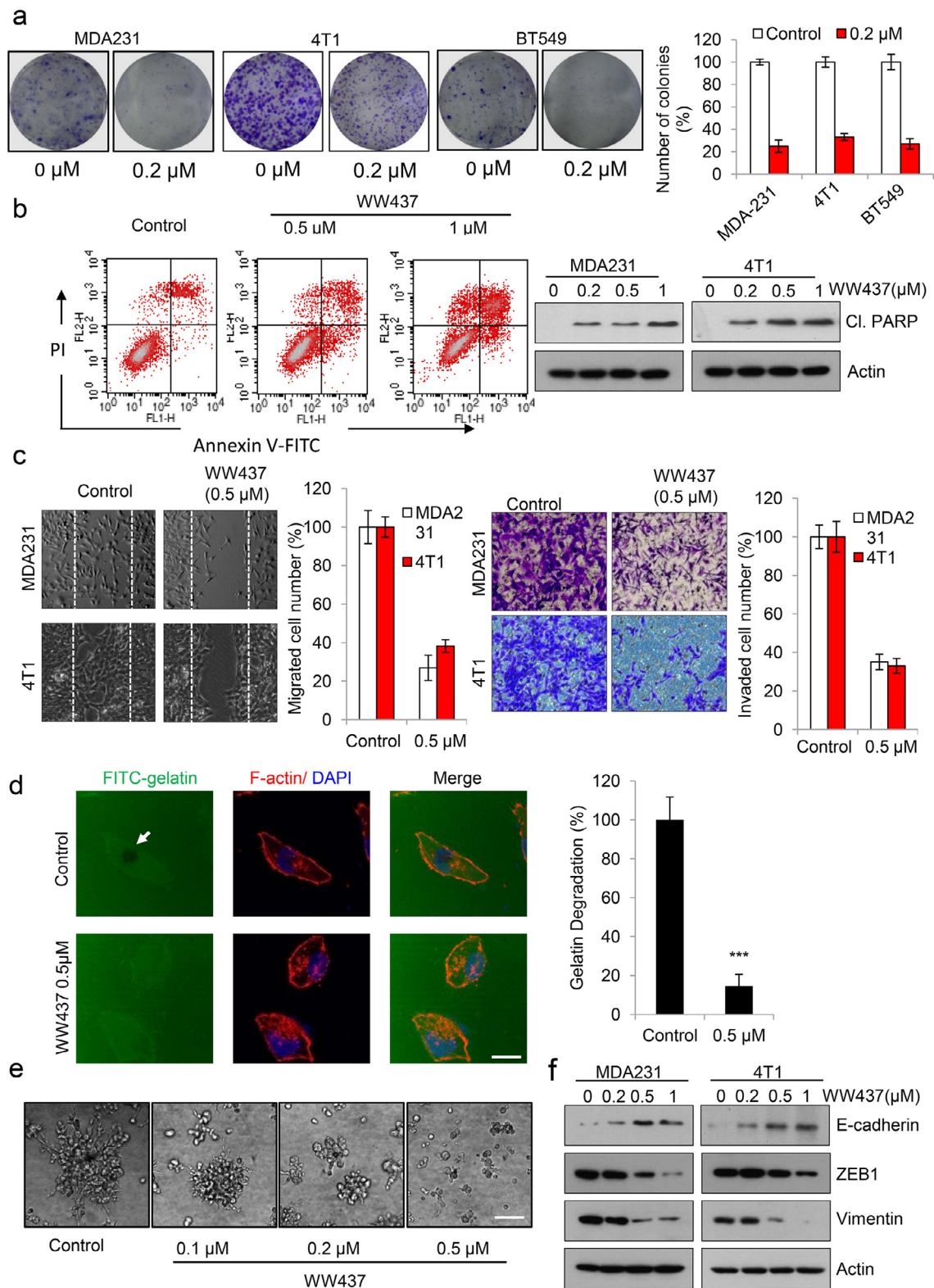


Fig. 2. WW437 displays potent tumor growth and metastasis-inhibitory effects on breast cancer cells. (a) WW437 significantly inhibited breast cancer cell colony formation. Breast cancer cells were seeded on six-well plates. After 12 h, cells were treated with indicated concentrations of WW437. On day 10, the number of colonies were counted. Results represent the average of three replications. The bars indicate the mean \pm SD. (b) Apoptosis was assessed by Annexin V/PI staining and flow cytometry (left panel). Cleaved PARP was evaluated by western blot (right panel). (c) WW 437 (0.5 μ M) inhibited cell migration and invasion in two highly malignant breast cancer cell lines MDA231 and 4T1. Left, representative images and quantification of the migration assay; right, representative images and quantification of the invasion assay. The bars indicate the mean \pm SD. (d) MDA231 cells were seeded on coverslips (procoated with FITC conjugated gelatin). After treated with WW437 for 12 h, F-actin was stained with phalloidin (red) and nuclei were stained with DAPI (blue). Areas of gelatin degradation were quantified using Image-Pro Plus 6.0 software. Scale bar, 10 μ m. The bars indicate the mean \pm SD. Statistically significant differences (Student's *t*-test), ***, $P < 0.001$. (e) 3D culture assay. MDA231 cells were seeded onto solidified Matrigel. After 30 min, medium containing 10% Matrigel and various concentrations of WW437 were added on top of the cells. The Matrigel-medium mixture was replaced every other day. Four days later, cells were photographed. Scale bar, 40 μ m. (f) The effect of WW437 on EMT related protein. Western blot analysis was performed with indicated antibodies. (For interpretation of the references to color in this figure legend, the reader is referred to the web version of this article.)