

Correction: Defining α -synuclein species responsible for Parkinson’s disease phenotypes in mice.

Jessica M. Froula, Marta Castellana-Cruz, Nadia M. Anabtawi, José D. Camino, Serene W. Chen, Drake R. Thrasher, Jennifer Freire, Allen A. Yazdi, Sheila Fleming, Christopher M. Dobson, Janet R. Kumita, Nunilo Cremades, and Laura A. Volpicelli-Daley

In the published article, there was an inadvertent error in Fig. 5. The panel for the retrobeads (*red*) and p- α -synuclein inclusions (*green*) in the cortex at 1 week post-injection was the same as 2 weeks post-injection. The 1-week post-injection panel was incorrect and has been corrected. There are no phosphorylated α -synuclein inclusions or retrotracer beads present in the cortex (or amygdala or SNc) 1 week post-injection.

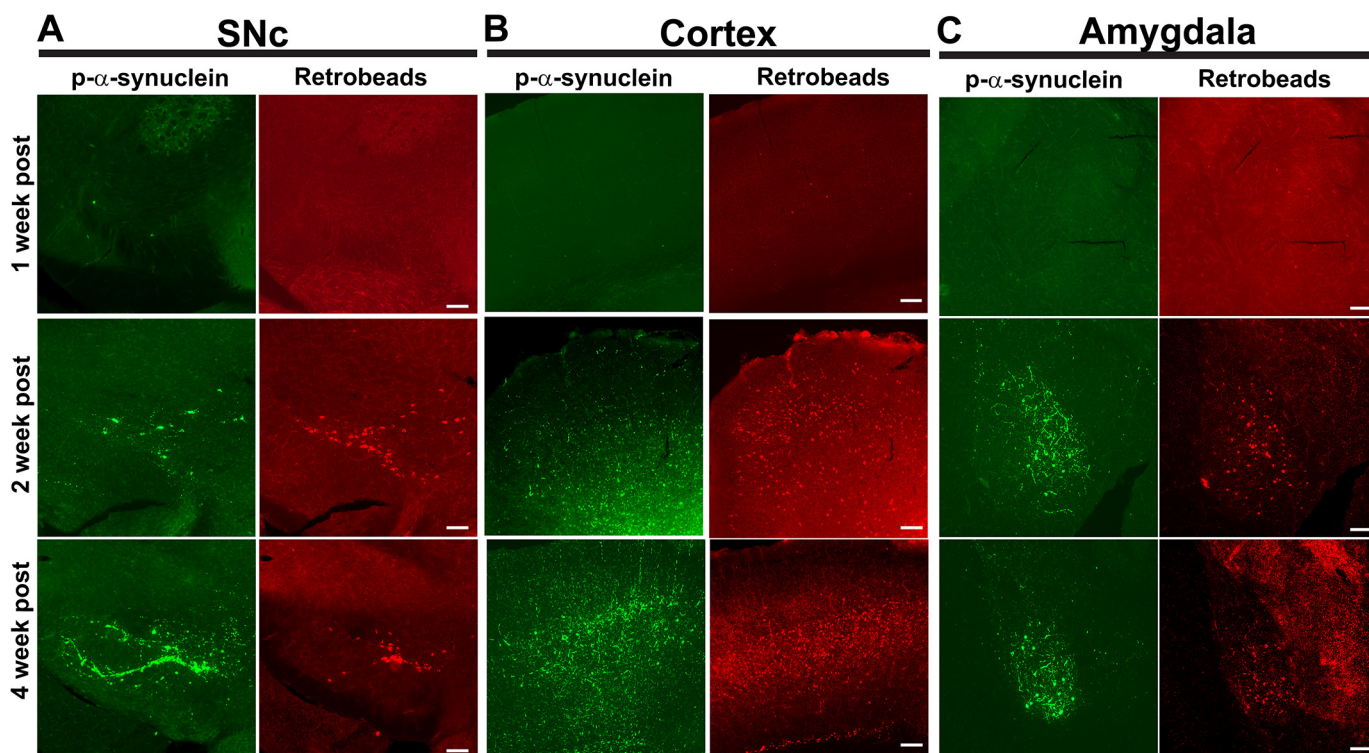


Figure 5.