








ARTICLE

<https://doi.org/10.1038/s41467-020-14401-1>

OPEN

The role of photon recycling in perovskite light-emitting diodes

Changsoon Cho ^{1,2,4}, Baodan Zhao^{1,3}, Gregory D. Tainter ¹, Jung-Yong Lee ², Richard H. Friend ¹, Dawei Di ^{1,3*}, Felix Deschler ^{1,5*} & Neil C. Greenham ^{1*}

Perovskite light-emitting diodes have recently broken the 20% barrier for external quantum efficiency. These values cannot be explained with classical models for optical outcoupling. Here, we analyse the role of photon recycling (PR) in assisting light extraction from perovskite light-emitting diodes. Spatially-resolved photoluminescence and electroluminescence measurements combined with optical modelling show that repetitive re-absorption and re-emission of photons trapped in substrate and waveguide modes significantly enhance light extraction when the radiation efficiency is sufficiently high. In this manner, PR can contribute more than 70% to the overall emission, in agreement with recently-reported high efficiencies. While an outcoupling efficiency of 100% is theoretically possible with PR, parasitic absorption losses due to absorption from the electrodes are shown to limit practical efficiencies in current device architectures. To overcome the present limits, we propose a future configuration with a reduced injection electrode area to drive the efficiency toward 100%.

¹ Cavendish Laboratory, Department of Physics, University of Cambridge, J.J. Thomson Avenue, Cambridge CB3 0HE, UK. ² School of Electrical Engineering, Korea Advanced Institute of Science and Technology (KAIST), Daejeon 34141, Republic of Korea. ³ State Key Laboratory of Morden Optical Instrumentation, College of Optical Science and Engineering, International Research Center for Advanced Photonics, Zhejiang University, Hangzhou 310027, China. ⁴ Present address: Dresden Integrated Center for Applied Physics and Photonic Materials (IAPP), Technische Universität Dresden, Dresden 01187, Germany. ⁵ Present address: Walter Schottky Institut, Technische Universität München, Garching D-85748, Germany. *email: dawei@zju.edu.cn; Felix.Deschler@wsi.tum.de; ncg11@cam.ac.uk

Perovskite light-emitting diodes (PeLEDs) have recently shown great advances in performance and have reached external quantum efficiencies (EQEs) of up to 22%^{1–6}, comparable to those of state-of-the-art organic LEDs (OLEDs)^{7–9}. It is notable that the reported EQEs are significantly above the ray-optics limit^{10,11} of $1/2n^2$ (corresponding to between 7 and 13%), as typical perovskites have relatively large refractive indices, n , between 2 and 2.6^{2,12–15} compared with organic emitters with $n < 1.8$ ^{7,16}. Although there have been many reports of OLEDs overcoming this limit by optimising microcavity effects with thin emissive layers^{7,8,17}, it is surprising that PeLEDs have achieved efficiencies of almost twice the limit even with thick emissive layers (~ 200 nm)^{2,4} in which the positions and orientations of emissive dipoles are difficult to control and the corresponding wave-optical effects are diluted. This discrepancy raises three questions: (i) how do PeLEDs achieve high EQEs overcoming their low ray-optical limit; (ii) what internal quantum efficiencies (IQEs) and light extraction efficiencies (LEEs) are being achieved in current PeLED devices; and (iii) what is the upper limit of PeLED efficiency and how might it be obtained?

Perovskite semiconductors have relatively small Stokes shifts, which lead to significant levels of re-absorption of emitted photons^{3–5,18,19}. Although re-absorption has been typically considered as a loss mechanism in LEDs^{20,21}, with sufficient luminescence efficiency, the process of photon recycling (PR) can assist with optical outcoupling by randomising the direction of photon propagation and redirecting photons from trapped to outcoupled modes²². PR has been previously reported to enhance the externally outcoupled photoluminescence (PL) of perovskite films and to improve the voltage characteristics of photovoltaics (PVs)^{22–30}. Although PR gives PeLEDs the potential to achieve 100% EQE theoretically, its practical contribution to the device efficiency is still under debate^{22–28}.

In the present study, we aim to verify and quantify the contribution of PR in PeLEDs and to suggest design principles to maximise the benefits from PR. Using $(\text{PEA})_2\text{Cs}_{n-1}\text{Pb}_n\text{Br}_{3n+1}$ with luminescence peaking at 520 nm, where PEA refers to phenylethylammonium, we measure spatially resolved PL and electroluminescence (EL). By detecting recycled photons at large distances from the excitation, we find that PR can significantly increase extraction of photons from trapped modes. Moreover, our modelling approach allows quantitative analysis of the LED efficiency. In state-of-the-art PeLEDs having EQE $> 20\%$, PR is calculated to be able to contribute $> 70\%$ of light emission (i.e., an absolute EQE increase of $> 14\%$). Although the recently reported EQEs are already close to calculated limits for planar architectures, we propose several photonic structures maximising the PR effect, which could further improve PeLED performance.

Results

Experimental investigation of PR in perovskites. In this study, we used films of the 2D–3D mixture $\text{PEA}_2\text{Cs}_{n-1}\text{Pb}_n\text{Br}_{3n+1}$ perovskite having high PL efficiency and a smooth surface (roughness of ~ 0.55 nm (Supplementary Fig. 1)). Figure 1a shows the optical extinction and PL spectra of investigated samples. Although the tail region of the extinction spectrum at wavelengths above 530 nm comes from Fresnel reflection at film interfaces, the absorption seen below 530 nm (Supplementary Fig. 6c) overlaps with the emission spectrum (Stokes shift of ~ 10 nm), which implies significant re-absorption. We measured the PL excitation (PLE) spectrum, representing the relative PL intensity as a function of excitation wavelength. The shape of PLE spectrum follows the absorption characteristics (Fig. 1a) and the peak PL wavelength is almost constant as the excitation wavelength is scanned across the spectral region of absorption

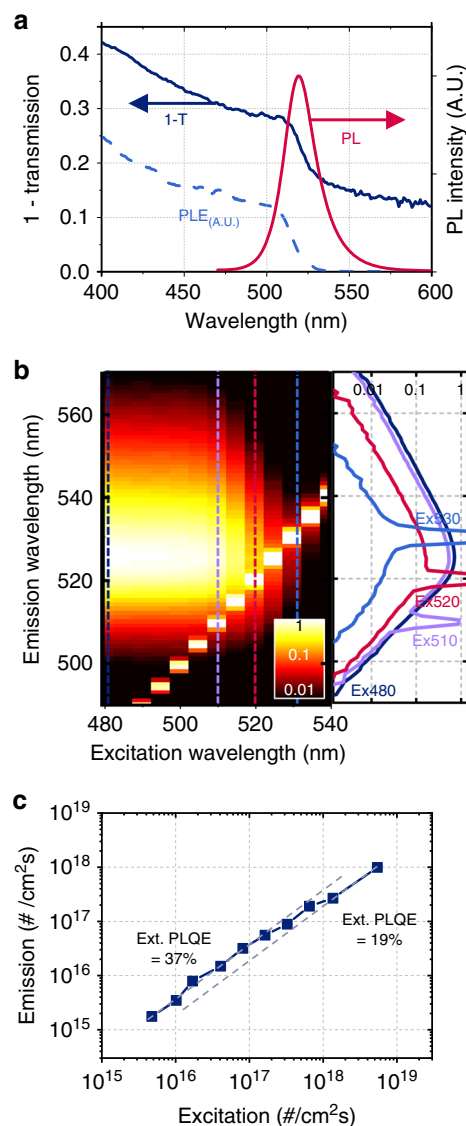
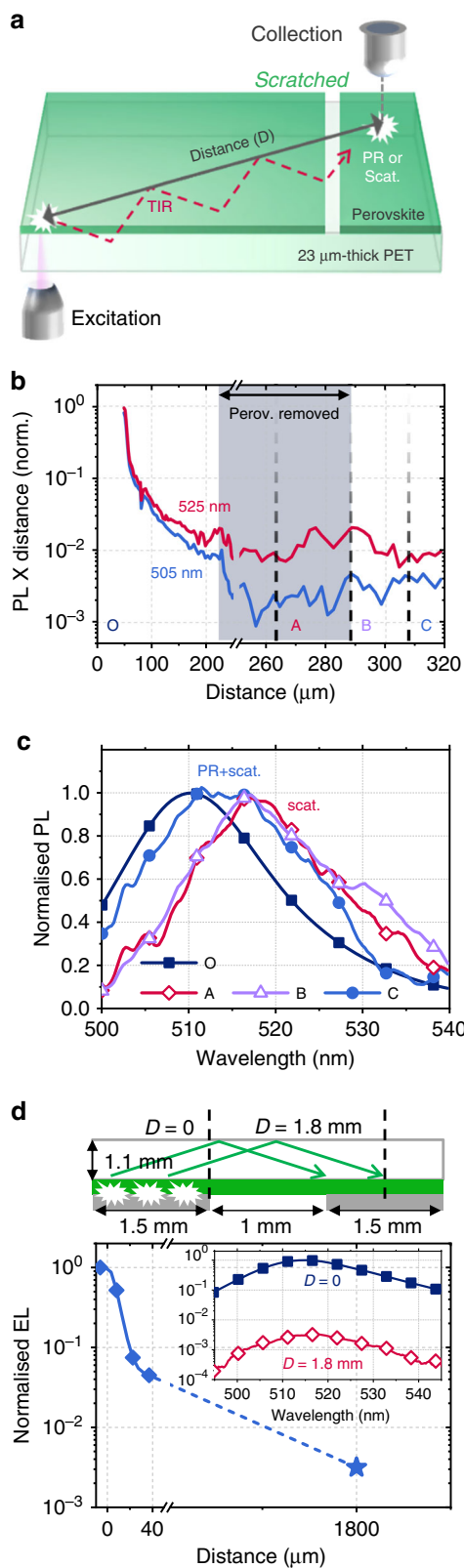


Fig. 1 Optical characterisation of perovskite film. **a** Measured extinction ($= 1 - \text{transmission}$), PL and PLE spectra of a 50 nm-thick perovskite film. **b** Measured normalised PL spectra as a function of excitation wavelength. (left: excitation-scanned colour map. Right: spectra at excitation wavelengths of 480, 510, 520 and 530 nm.) The sharp peaks seen in the emission spectra are owing to detection of photons from the excitation source; for 530 nm excitation the spectral tail of the detected excitation causes some distortion of the overall spectrum. **c** Flux of emitted photons as a function of the flux of absorbed 405 nm photons, with lines indicating PLQEs of 37% and 19%.

(Fig. 1b). This implies that the PL efficiency and spectrum do not depend on the wavelength of absorbed photons, and are sustained even in the region of re-absorption including wavelengths slightly longer than the peak wavelength³¹. As shown in Fig. 1c, in contrast to 3D perovskites used in previous studies for PR^{24,25,27}, the external PL quantum efficiency (PLQE) of the perovskite is higher at low excitation fluxes (37%) than at higher excitation fluxes (19%) (probably owing to increased Auger recombination^{25,28}), allowing more precise investigation of the effect of PR at distances away from the original excitation.

Figure 2a presents a schematic of the spatially resolved PL measurement setup used, in which the lateral distance between the two objectives for 405 nm laser excitation and PL collection are varied. The 80 nm-thick perovskite film was coated on a



23 μm -thick polyethylene terephthalate (PET, Hostaphan RN 23) substrate. The radiated photons not contained in the escape cone are trapped by total internal reflection at the interfaces and diffuse radially. Since the sweep distance (300 μm) is orders of magnitude larger than both the re-absorption distance ($1/\alpha_{520\text{nm}} = 1.3 \mu\text{m}$ in our perovskite) and the typical charge carrier diffusion lengths (on the order of 1 μm) of perovskites^{32–34}, the signal collected at

Fig. 2 Laterally measured PL and EL of perovskite. **a** Schematic representation of spatially resolved PL measurements with separate microscope objectives for excitation and collection. Trapped photons become detectable by either PR or scattering. **b** Laterally measured PL (normalised) as a function of distance from the point-of-excitation at wavelengths of 505 (± 5) nm and 525 (± 5) nm for a 2D–3D mixture $\text{PEA}_2\text{Cs}_{n-1}\text{Pb}_n\text{Br}_{3n+1}$ perovskite film with a gap between 230 μm and 290 μm . The measured PL intensity was multiplied by distance to compensate for the radial spread of light intensity, to give an indication of photon losses as a function of distance. **c** Measured PL spectra at distances of 0 μm (O, initial excitation), 265 μm (A, where perovskite was removed), 290 μm (B, at the edge of the gap) and 310 μm (C, on perovskite). **d** Normalised spatial EL for a full device, where voltage (4 V) is applied to the pixel covering from $-1500 \mu\text{m}$ to 0 μm . (inset: the measured EL spectra in A.U. at 0 μm and 1800 μm). The schematic shows possible ray paths in the substrate.

such large distances is expected to arise mostly from re-absorbed photons in the substrate mode rather than those in the waveguide mode or from diffused charge carriers.

As shown in Fig. 2b, we observe a small amount of light outcoupled at large distances from the point of excitation for both 505 nm and 525 nm. Although both scattering and PR can make trapped photons detectable at long distances²⁴, their contributions can be distinguished by their different spectral characteristics: for a sufficiently narrow PL spectrum, the scattering length does not change significantly for emitted wavelengths and the scattered spectrum represents the spectrum of trapped photons at the relevant position. As trapped photons with shorter wavelengths have higher probability to undergo re-absorption, the trapped light and its scattering signal tend to be more red-shifted along the distance of propagation, whereas the signal from PR always resembles the original PL spectrum, as observed in Fig. 1b. In Fig. 2b, the signals at 505 nm and 525 nm show slightly different distance dependence up to 200 μm (i.e., spectral variation), indicating the existence of this scattering effect.

To quantify the contribution of PR, we created a gap in the perovskite film by mechanically removing the region at distances between 230 μm and 290 μm . Then, as shown in Fig. 2c, the signal A observed in the perovskite-free region shows a purely scattered signal, with a peak that is 10 nm red-shifted from the original signal O at 0 μm . On the other hand, the signal C in the perovskite-covered region after the gap shows a relatively broad spectrum containing both PR and scattered light. PR makes up 55% of the total intensity (Supplementary Fig. 3). Therefore, although significant light scattering is occurring (mostly in the Hostaphan RN 23 PET substrate, known to have a haze of 7%), the recovery of the original PL spectrum at C can be regarded as clear experimental evidence of PR occurring in the perovskite material under investigation. Interestingly, at the far edge (B) of the gap an additional peak appears at ~ 530 nm, not seen in A and C. This arises from scattered outcoupling of photons trapped in the perovskite waveguide mode (Supplementary Fig. 4 and Supplementary Note 2). When photons are recycled (region C), some of them are trapped inside the perovskite thin-film and their spectrum is rapidly red-shifted owing to the short re-absorption length of perovskite. They then are outcoupled at the edge, resulting in the 530 nm peak.

To study the effect of PR in a more practical setting, we measured the spatially resolved EL of a full PeLED device with a structure of glass/indium tin oxide (ITO, 150 nm)/poly(9-vinylcarbazole) (PVK, 10 nm)/perovskite (50 nm)/2,2',2''-(1,3,5-benzinetriyl)-tris(1-phenyl-1-H-benzimidazole) (TPBi, 50 nm)/LiF (1 nm)/Al, of which the measured maximum EQE was

12.5% at 2.6 V. When a voltage (4 V) is applied to a pixel, as shown in Fig. 2d, light output can be observed even at the centre of the next pixel, which is 1.8 mm away from the edge of the original pixel, with similar spectral characteristics. We attribute this observation to the recycling of photons that have propagated in the substrate mode. The radiation from non-excited film areas raises a practical measurement issue that overall outcoupling efficiency varies depending on the device geometry, including the lateral size and the thickness of the substrate (Supplementary Fig. 5 and Supplementary Note 3).

The outcoupling efficiency of PeLEDs can be calculated by integrating recursive PR processes^{24,25,35}. By assuming that the ratios of direct light outcoupling (LEE_0), perovskite re-absorption (A_{act}) and parasitic absorption loss (A_{para}) ($LEE_0 + A_{act} + A_{para} = 1$) are consistent along the recursion, the EQE becomes:

$$\begin{aligned} EQE_{PR} &= IQE \times LEE_0 \times (1 + A_{act} \times \eta_{rad} + (A_{act} \times \eta_{rad})^2 + \dots) \\ &= \eta_{inj} \times \eta_{rad} \times LEE_0 / (1 - A_{act} \times \eta_{rad}) \\ &= \eta_{inj} \times LEE_0 / \left(LEE_0 + A_{para} + (1 - \eta_{rad}) / \eta_{rad} \right), \end{aligned} \quad (1)$$

where IQE is a product of internal radiation efficiency (η_{rad}) and charge balance efficiency (η_{inj})³⁶. With ideal (near-unity) η_{inj} and η_{rad} , Eq. 1 becomes:

$$EQE_{PR, max.} = LEE_0 / (LEE_0 + A_{para}), \quad (2)$$

Therefore, parasitic absorption is an important limiting factor of LED efficiency, which prevents PeLEDs from achieving the theoretical maximum EQE of 100% for a perfect IQE.

Optical analysis of PeLED efficiencies. To maximise the benefit of PR, detailed design principles for LED devices can be established with the assistance of optical device modelling^{37–39}. In PeLEDs, the presence of re-absorption is a major obstacle to calculations of dipole emission, leading to a divergence of dipole density within the absorbing medium⁴⁰. Although previous studies ignored the re-absorption of the emissive layers to avoid this problem^{2,3,14,41}, we resolved the divergence by assuming that (i) internal dipoles are uniformly distributed over the perovskite divided into 20 slices, (ii) only the mesh slice containing the dipole is non-absorbing (i.e., $k = 0$) and the other 19 mesh slices retain their absorption property and (iii) the non-radiative coupling^{37,38,42} of the dipole with other absorbing meshes in perovskite, which is the main reason for divergence, does not affect the external radiation efficiency as the energy remains in the perovskite. The third statement can be understood as virtual PR in the same manner as Förster resonance energy transfer. The transfer matrix formalism (TMF)^{37–39,43} was adopted to calculate the efficiency of each dipole. Full details for our approach and its physical background are provided in Supplementary Figs. 6–9 and Supplementary Notes 4–5.

Our modelling methodology allows precise optical analysis of PeLEDs and quantitative investigation of PR. As the emissive layer ((PEA)₂Cs_{n-1}Pb_nBr_{3n+1} perovskite) has a refractive index with real part (n) of ~ 2 (Supplementary Fig. 6), larger than that of air (1), the optical energy is transferred through either the escape cone, the substrate mode, the waveguide mode, or non-radiative parasitic coupling (also called the plasmon mode, having a complex emission angle) depending on the emission angle^{14,38,39}, as shown in Fig. 3a. As trapped modes include photon propagation within the absorbing layers (e.g., ITO, perovskite and Al), non-outcoupled optical energy is eventually re-absorbed if a device has sufficiently large lateral dimensions as observed in spatial EL measurements and Supplementary Fig. 5.

In Fig. 3b, we observe that for thicker emissive layers, the fraction of re-absorption in perovskite (A_{act}) tends to increase in all radiative modes and the fraction of direct outcoupling decreases. The corresponding maximum EQEs with perfect η_{inj} and η_{rad} are plotted in Fig. 3c. Although thin perovskite films benefit from the optimised microcavity effect with a local maximum near 20 nm, for thicker perovskites, the maximum EQE without re-absorption (open navy squares) converges to the ray-optical limit of $1/2n^2$, which is 13% for n equal to 2. The EQE further decreases when re-absorption is considered as a loss mechanism (closed grey squares). On the other hand, if re-absorbed photons recursively generate dipoles with perfect recycling efficiency (η_{rad} equal to 100%) (Supplementary Fig. 8), PR allows high EQEs to be obtained. Values $\sim 20\%$ are predicted near the local maxima (closed red circles) with PR contributing up to 60% of that value (violet dashed line). Although the experimentally optimised thickness (50 nm) of our devices is closer to the first local maximum at 20 nm, it is noteworthy that a few of the recently reported state-of-the-art PeLEDs^{2,4} use thicker perovskite layers closer to the second local maximum at 160 nm with more PR contribution.

For luminescent films, the measured external PLQEs are typically assumed to be the same as η_{rad} . However, when re-absorption exists this assumption is no longer valid and the relationship between PLQE and η_{rad} is nonlinear, as shown in Fig. 3d. For example, our measured PLQE of 37% (Fig. 1c) corresponds to an η_{rad} of 75%, approximately twice the prediction from a linear model. Such a nonlinear relationship also appears for the device, as shown in Fig. 3e. When η_{rad} is low, (such as in typical perovskite solar cells under 1 sun illumination) the benefit of PR does not exceed the re-absorption loss and the EQE with PR is similar to that for a non-absorbing perovskite. However, as η_{rad} increases, a maximum EQE of 18.0% is reached with the aid of increased PR, which is substantially higher than the value without re-absorption (14.5%), demonstrating the counter-intuitive principle that a reduced Stokes shift enhances outcoupling efficiency in highly radiative devices. This relationship can be used to correctly quantify the IQE and PR contribution in practical devices. For example, for our current device structure giving an EQE of 12.5%, η_{rad} is found to be 75% and the fractional contribution from PR is 17.5% (Fig. 3e). This leaves significant further room for enhancement in EQE with increased η_{rad} and enhanced PR.

Our model incorporating PR is important to explain the recent successes of achieving high EQE ($> 20\%$) PeLEDs^{2–6}, particularly for those based on perovskites with high refractive indices and large re-absorption^{3–6}. Fig. 3f–g shows that even with 100% IQE the maximum EQEs from the classical model cannot exceed 9% and 16% for the LED structures reported by Lin et al.⁴ and Xu et al.⁵, who reported EQEs above 20% with 200 nm and 60 nm-thick perovskites, respectively. However, by taking PR into account, maximum EQEs between 20% and 30% are predicted to be achievable, making the measured EQEs reasonable with very large PR contributions above 70% and 30% (i.e., additional EQEs of 14% and 6%) for effective re-absorption coefficients (α) above $1.3 \times 10^4 \text{ cm}^{-1}$ and $4 \times 10^3 \text{ cm}^{-1}$, respectively. Here, we assumed that these α values are sufficiently high for re-absorption (and hence PR) to dominate over scattering, at least in the planar devices. Although scattering can in general provide an effective means to extract photons from trapped modes by randomising the propagation angle, we expect it can dominate over PR in some devices having (i) exceptionally rough interfaces or nanostructures^{3,16,25,41} (ii) large Stokes shifts (e.g., emitters mixed with host materials); or (iii) low radiation efficiency (e.g., solar cells). The study of devices where both PR and scattering are important will be an important goal for future research.

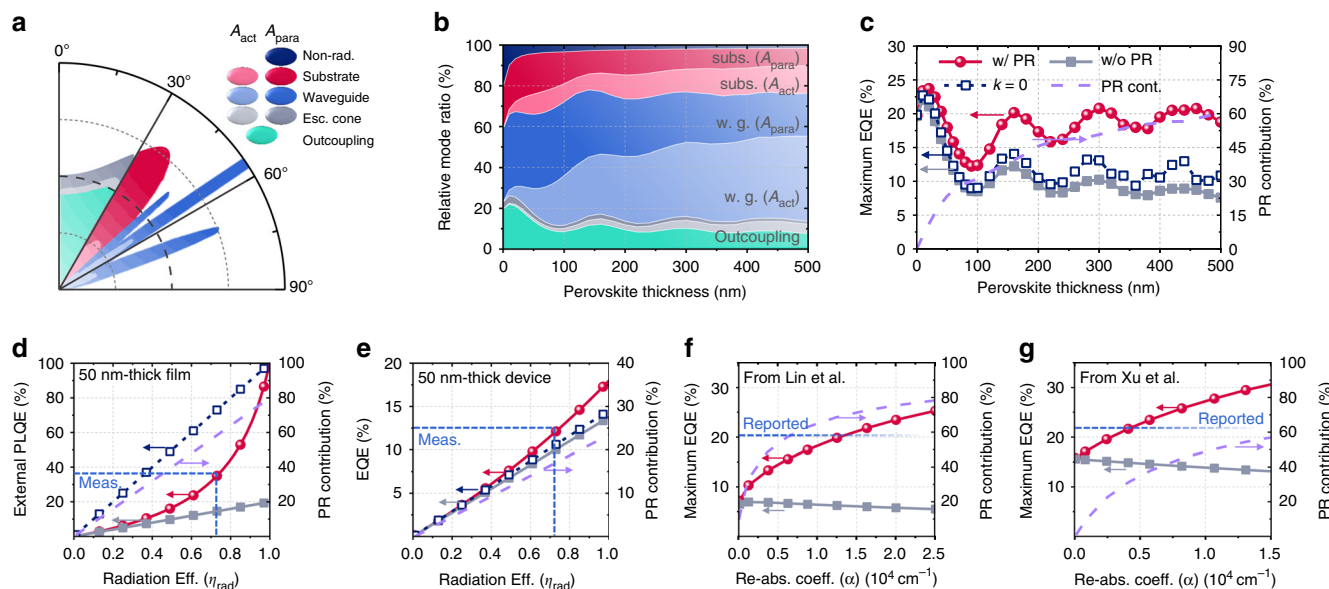


Fig. 3 PeLED analysis using TMF modelling. **a** Angular mode analysis for PeLED with a structure of glass/ITO (150 nm)/PVK (10 nm)/PEA₂Cs_{n-1}Pb_nBr_{3n+1} perovskite (50 nm)/TPBi (50 nm)/LiF (1 nm)/Al. Proportions of active absorption (A_{act}) and parasitic absorption (A_{para}) for each mode are represented by unique colours in **a–b**. **b** Relative ratios of each mode in PeLED for various perovskite thickness. **c–g** Calculated EQEs (of PL or EL) with PR (closed red circles), without PR (closed grey squares) and without re-absorption (open navy squares), as well as relative PR contribution (violet dashed lines) for **c** an ideal PeLED (IQE = 100%) with various perovskite thickness; **d** a 50 nm-thick perovskite film on glass; **e** a PeLED with 50 nm-thick perovskite ($\eta_{inj} = 100\%$); and **f–g**, the PeLED structures reported by Lin et al.⁴ and Xu et al.⁵, respectively, with 100% IQE. For **d–g** the blue dashed lines compare the graphs with the experimentally measured or reported values. The fact that the calculated η_{rad} (75%) of the PeLED **e** is almost the same as that of the neat film **d** indicates that the assumption of $\eta_{inj} = 100\%$ is a good approximation, at least for the voltage of 2.6 V where the maximum EQE occurs. See Supplementary Figs. 10–12 for further details.

Advanced schemes to maximise the benefits of PR. As shown in the previous section, the maximum achievable EQE is limited to between 20% and 25% in current PeLED architectures owing to losses from parasitic absorption. Although recently reported devices already approach this upper bound, Supplementary Fig. 10 and Supplementary Note 7 show that the EQE can be further enhanced to between 30% and 50% through materials engineering, which targets perovskites with reduced n and increased re-absorption, and transparent conductive electrodes with reduced parasitic absorption.

Ultimately, to achieve ultrahigh EQEs approaching 100%, an improved device architecture design is essential to remove A_{para} and maximise the PR effect. Figure 4a shows an example of such a configuration where the emissive area is reduced to a small fraction of the substrate, surrounded by regions without electrodes and associated parasitic absorption. Once a photon escapes the small region with injection electrodes, parasitic absorption is avoided, and in the limit of high η_{rad} all photons will eventually be outcoupled. A back mirror (not necessarily conductive) with high reflectivity ensures all photons are extracted in the forward direction. Figure 4b shows that a maximum EQE of over 90% is achievable in this system with an electrode width of < 30 nm. This implies that dedicated design of nanostructured electrodes will bring further breakthroughs in LED efficiency with the aid of PR, in addition to their scattering and plasmon effects^{3,16,44,45}. Moreover, although this calculation assumed dipole generation immediately beneath the electrode, charge carrier diffusion can improve the effective injection area of LEDs with nanostructured electrodes, without increase of parasitic absorption loss. Accordingly, the benefit of efficient PR can be achieved without damaging the areal density of light emission, by setting the distances between nanostructured electrodes to be similar to the diffusion length of charge carriers.

Not only the quantity of photons, but also properties of emitted photons can be optimised utilising PR. When emitted photons are filtered by a selective transmitter, photons having the non-desired property can be recursively recycled with the randomised property within the emitting film. In the limit of perfect PR and zero parasitic absorption loss, a 100% filter transmission could be achieved for the desired property. Figure 4c–e illustrate more examples of light property optimisation—a 1D metal nanogrid^{146,47} that aligns polarisation; an angle confinement microstructure^{48,49}, which confines emission angle; and a distributed Bragg reflector^{35,50,51}, which narrows both emission angle and spectrum. Polarised emission will be especially useful in display applications, reducing the 50% efficiency losses typically encountered in the circular polariser needed to achieve high contrast ratios.

Discussion

The study illuminates the current state and potential of PR in PeLEDs, demonstrating how the efficiency and properties of light emission are enhanced. Spatially resolved luminescence measurements have shown lateral propagation of emission over 300 μm in perovskite films, demonstrating efficient PR in the material. By recycling the photons trapped in the substrate and waveguide modes, PR has been shown to significantly contribute to the light outcoupling in luminescent perovskite optoelectronic devices having high η_{rad} , such as PeLEDs. Schemes incorporating reduced electrode area and various filtering structures have been proposed to maximise the benefit of PR in current PeLED architectures.

Methods

Preparation of perovskite precursor and film. The perovskite precursor was prepared by dissolving 110.1 mg PbBr₂ (Sigma-Aldrich), 63.8 mg CsBr (Sigma-

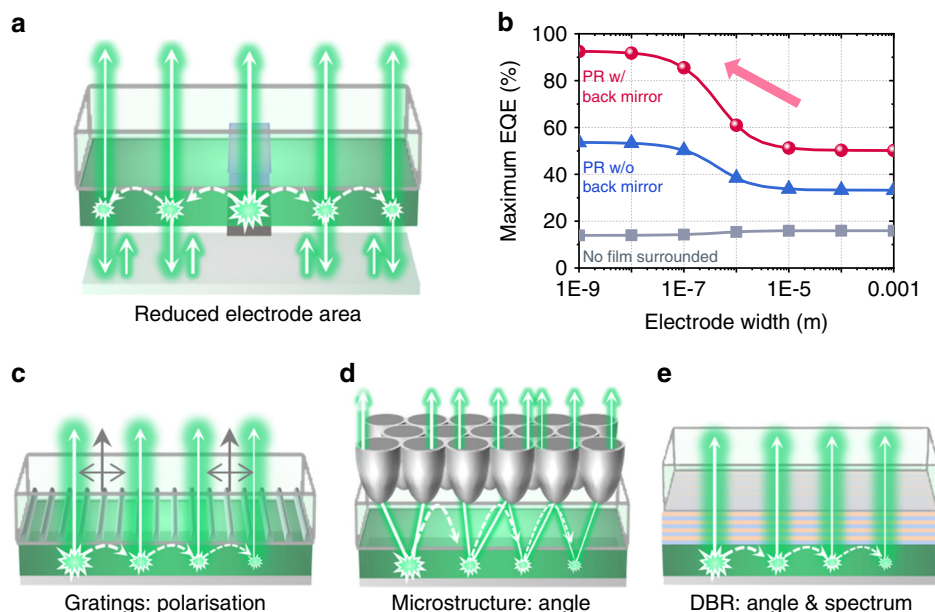


Fig. 4 Photonic structure control of PR. **a** A proposed LED architecture consisting of small area electrodes and a large area film, having a reflecting mirror at the bottom. **b** Calculated maximum EQE (IQE = 100%) as a function of electrode width in the proposed systems having PR with back mirror, PR without back mirror (Only front re-emission is collected) and no film surrounded (PR only occurs inside the pixel). The device structure in the electrode-covered area was assumed to be same as the one for Fig. 3 (with a 50 nm-thick $\text{PEA}_2\text{Cs}_{n-1}\text{Pb}_n\text{Br}_{3n+1}$ perovskite). **c–e** Examples of light property modification using **c** 1D metal nanogrid for polarisation **d** microstructure for angle confinement and **e** DBR for spectrum control.

Aldrich) and 67.46 mg PEAbr (Dyesol) in 1 mL of anhydrous dimethyl sulfoxide (Sigma-Aldrich). The precursor solution was stirred using a magnetic stir-bar for ~12 h at room temperature before use. For the experiment of spatially resolved PL, the perovskite film was prepared by dropping 20 μL perovskite precursor onto a PET substrate spinning with 2000 rounds per minute (RPM).

Fabrication of device. To measure spatial EL, a pre-patterned ITO substrate (15 Ωsq^{-1} , Colorado Concept Coatings) was cleaned using ultrasonication in acetone and isopropanol for 15 min, respectively, and then dried with a nitrogen blow gun, after which the substrate was treated under oxygen plasma etching (forward power, 300 W; reflected power, 0 W, 10 min). The ITO substrate was then transferred to a nitrogen-filled glovebox. PVK was spun from chlorobenzene solution (6 mg mL^{-1}) at RPM 3000 and was annealed at 120 $^\circ\text{C}$ for 10 min. Subsequently, the perovskite was deposited from the precursor to form a ~50 nm layer using 4000 RPM, and was annealed at 70 $^\circ\text{C}$ for 8 min. Finally, 50 nm TPBi, 1 nm of LiF and 80 nm of Al were sequentially evaporated through a shadow mask at a pressure of 10^{-6} mBar. The device was encapsulated with UV epoxy (NOA81, Thorlabs)/cover glass to avoid exposure to oxygen and moisture and degradation during measurement.

EQE characterisation. A Keithley 2400 source-metre was used to obtain the current density–voltage (J - V) characteristics. The relative angular characteristics of the emission were measured by rotating the device at 20 cm from the silicon photodiode. The luminances and EQEs were calculated by applying the relative angular characteristics to the front emission measured using a silicon photodiode of which spectral response is known. The LED measurement setup was previously cross-checked against a third-party industrial laboratory⁸.

PL and PLQE measurement. PL was measured with an integrating sphere according to the method previously reported⁵². A continuous wave 405 nm diode laser with a beam size of 0.3 mm^2 was used for excitation. Photons were collected using an Andor iDus DU420A Si detector with an integration time of 0.02 s (for excitation $> 10^{18}\text{ m}^{-2}\text{ s}^{-1}$) or 0.2 s (for excitation $< 10^{18}\text{ m}^{-2}\text{ s}^{-1}$).

UV-vis and PLE measurement. Absorption spectra of thin-films deposited on fused silica substrates were measured using Hewlett-Packard 8453 UV-vis spectrometer with blank substrate correction. The photoluminescence excitation (PLE) spectrum was obtained by measuring a perovskite-coated glass with FLS980-S2S2-sm (Edinburgh Instruments Ltd.) equipment. Each measured value was normalised to incident excitation intensity. The excitation wavelength was scanned while detecting the fixed wavelength of 525 nm (for a single spectrum, dwell time of 0.20 s per each point) or various wavelengths (for mapping, dwell time of 0.10 s per each point) with a detection range of 1 nm.

Spatially resolved PL/EL. The spatially resolved PL was measured using a WITec Alpha RAS system. The sample was rested on a XYZ piezo stage of the microscope and a black aperture was inserted below the substrate to prevent any unexpected light pathway such as diffusion at the excitation lens and reflection at the bottom stage. The film coated on the top of the PET substrate was excited by a 405-nm c.w. laser (Coherent CUBE), focused using a $\times 40$ objective lens ($\text{NA} = 0.60$) from the bottom side and the PL was collected in transmission geometry using a $\times 20$ objective lens ($\text{NA} = 0.40$) above the top side. The lateral distance between the excitation and collection was controlled by WITec ScanCtr Spectroscopy Plus software. The signal at each point was obtained by averaging several repetitive measurements with the integration time of 1 s. The signals for 505 nm and 525 nm were collected by integrating the ranges of 500–510 nm and 520–530 nm, respectively. The spatially resolved EL has been measured using the same setup by replacing the excitation light with an applied voltage of 4 V. The full device with a structure of glass/ITO (150 nm)/PVK (10 nm)/perovskite (50 nm)/TPBi (50 nm)/LiF (1 nm)/Al was measured. As photon flux is diluted at the far distance, the far range signal was constructed by averaging 36 measurements with integration time of 26 s to secure sufficient signal-to-noise ratio. All the measured quantities of the signal were divided by the integration time. Refer to the SI for further details of reliability issues related to this measurement.

Optical modelling. The TMF^{37–39,43} was used to calculate the emissive characteristics in PeLEDs having a structure of glass ($n = 1.5$, thick)/ITO (150 nm)/PVK ($n = 1.71$, 10 nm)/perovskite/TPBi ($n = 1.76$, 50 nm)/Al, where n indicates the refractive index of each layer. Refractive indices of ITO⁵³ and Al⁵⁴ were obtained from the literature and that of perovskite was obtained by fitting the Kramers–Kronig relation⁵⁵ for the measured transmission and PLE spectrum (refer to Supplementary Fig. 6). As the imaginary part (k) of the refractive index in perovskite sharply varies within the range of the luminescence spectrum, we performed calculations throughout the wavelength range from 480 nm to 560 nm and integrated (Supplementary Fig. 9), with the assumption that internal dipole radiation has a spectrum identical to the measured PL under 405 nm excitation (Fig. 1a). The active layer was divided into 20 mesh slices and dipoles were assumed to be uniformly distributed to the mesh slices as described in Supplementary Fig. 7a. Based on the calculated internal electromagnetic fields from TMF, we calculated Poynting vectors (i.e., energy fluxes) at each interface having directions normal to the interfaces³⁹. Then, for a given dipole with a given emission angle, the re-absorption in each layer can be obtained from the differences between the Poynting vectors at the front and back interfaces. We calculated quantities of light emission and re-absorption by sweeping dipole properties of emission angle, wavelength, orientation and polarisation. The results of mode analysis have been obtained by integrating those swept quantities.

Modelling for the reported devices. Reported structures of glass ($n = 1.5$, thick)/ITO ($n = 1.80 + 0.020i$, 150 nm)/PEDOT:PSS ($n = 1.54$, 40 nm)/perovskite

($n = 2.2^{13,15,56}$ and k varies, 200 nm)/poly(methyl methacrylate) (PMMA, $n = 1.49$, 8 nm)/C₅₇H₇₂N₆ (B3PYMPM, $n = 1.85$, 40 nm)/Al ($n = 0.86 + 6.41i$, thick) and glass ($n = 1.5$, thick)/ITO ($n = 1.51 + 0.027i$, 150 nm)/ZnO:PEIE ($n = 1.58$, 40 nm)/perovskite ($n = 2.5^{15}$ and k varies, 60 nm)/poly(9,9-dioctyl-fluorene-co-N-(4-butylphenyl)diphenyl-amine) (TFB, $n = 1.57$, 30 nm)/molybdenum oxide (MoO₃, $n = 1.98$, 5 nm)/Au ($n = 0.18 + 5.11i$, thick) were used for the devices of Lin et al.⁴ and Xu et al.⁵, respectively. For simplicity, a monochromatic model was used for the wavelength (λ) of 525 nm and 800 nm, respectively, varying effective k values ($= \alpha\lambda/4\pi$) of perovskite. Refractive indices at each wavelength were obtained from various literatures^{53,54}.

Modelling for the proposed concept with reduced injection electrode area. In the proposed system with reduced injection electrode area (Fig. 4a–b), we assumed that a full PeLED (the same as that used in Fig. 3) with an infinite length and finite width is positioned at the centre of a 1.1-mm-thick system with infinite lateral dimensions. The radiation efficiency of perovskite and the reflectivity of the back mirror are assumed to be 100% and 98%, respectively. In the electrode-covered area, the emitted dipole was assumed to have a mode fraction shown in Fig. 3b, ignoring possible optical effects from nanopatterned electrodes. In the pure-film area, it was assumed to have 50% forward emission and 50% backward emission. Then, if a photon escapes the electrode area, it can be recycled with efficiencies of 99% (50% \times 100% + 50% \times 98%, for PR with back mirror), 50% (for PR without back mirror) and 0% (for no surrounding film), respectively. The 1D simulation domain for the electrode-covered area was sliced into 1 nm size meshes and dipoles were assumed to be uniformly distributed over this area. When a photon in the escape cone is re-absorbed by perovskite, it was assumed to be re-emitted at the same mesh. When light is trapped by the waveguide mode, it decays exponentially in both left and right directions, with a decay constant of $\alpha_{\text{act}} + \alpha_{\text{para}}$ where α_{act} indicates a perovskite re-absorption constant ($\alpha_{\text{act}} = 1.09 \mu\text{m}^{-1}$ from the average of the measured absorption coefficient of our perovskite) and α_{para} indicates a constant for parasitic absorption loss, assumed to be $\alpha_{\text{para}} = \alpha_{\text{act}} \times A_{\text{para}}/A_{\text{act}}$ in the waveguide mode. All photons in the substrate mode can directly escape the electrode because their single-trip propagation distance (> 2 mm) is longer than the electrode widths used in the calculation. The calculation was recursively performed until no photon remains in perovskite of the electrode-covered area.

Data availability

The data underlying each Figure in this paper are available at (<https://doi.org/10.17863/CAM.46319>).

Received: 20 August 2019; Accepted: 22 December 2019;

Published online: 30 January 2020

References

- Tan, Z. K. et al. Bright light-emitting diodes based on organometal halide perovskite. *Nat. Nanotechnol.* **9**, 687–692 (2014).
- Zhao, B. et al. High-efficiency perovskite-polymer bulk heterostructure light-emitting diodes. *Nat. Photonics* **12**, 783–789 (2018).
- Cao, Y. et al. Perovskite light-emitting diodes based on spontaneously formed submicrometre-scale structures. *Nature* **562**, 249–253 (2018).
- Lin, K. B. et al. Perovskite light-emitting diodes with external quantum efficiency exceeding 20 per cent. *Nature* **562**, 245–248 (2018).
- Xu, W. et al. Rational molecular passivation for high-performance perovskite light-emitting diodes. *Nat. Photonics* **13**, 418–424 (2019).
- Shen, Y. et al. High-efficiency perovskite light-emitting diodes with synergetic outcoupling enhancement. *Adv. Mater.* **31**, 1901517 (2019).
- Lin, T. A. et al. Sky-blue organic light emitting diode with 37% external quantum efficiency using thermally activated delayed fluorescence from spiroacridine-triazine hybrid. *Adv. Mater.* **28**, 6976 (2016).
- Di, D. et al. High-performance light-emitting diodes based on carbene-metal-amides. *Science* **356**, 159–163 (2017).
- Uoyama, H., Goushi, K., Shizu, K., Nomura, H. & Adachi, C. Highly efficient organic light-emitting diodes from delayed fluorescence. *Nature* **492**, 234–238 (2012).
- Greenham, N. C., Friend, R. H. & Bradley, D. D. C. Angular-dependence of the emission from a conjugated polymer light-emitting diode - implications for efficiency calculations. *Adv. Mater.* **6**, 491–494 (1994).
- Yablonovitch, E. Statistical ray optics. *J. Opt. Soc. Am.* **72**, 899–907 (1982).
- Chen, C. W. et al. Optical properties of organometal halide perovskite thin films and general device structure design rules for perovskite single and tandem solar cells. *J. Mater. Chem. A* **3**, 9152–9159 (2015).
- Eaton, S. W. et al. Lasing in robust cesium lead halide perovskite nanowires. *Proc. Natl Acad. Sci. USA* **113**, 1993–1998 (2016).
- Shi, X. B. et al. Optical energy losses in organic-inorganic hybrid perovskite light-emitting diodes. *Adv. Opt. Mater.* **6**, 1800667 (2018).
- Ndione, P. F., Li, Z. & Zhu, K. Effects of alloying on the optical properties of organic-inorganic lead halide perovskite thin films. *J. Mater. Chem. C* **4**, 7775–7782 (2016).
- Cho, C. et al. Improved internal quantum efficiency and light-extraction efficiency of organic light-emitting diodes via synergistic doping with Au and Ag nanoparticles. *ACS Appl. Mater. Interfaces* **8**, 27911–27919 (2016).
- Xiang, C. Y., Koo, W., So, F., Sasabe, H. & Kido, J. A systematic study on efficiency enhancements in phosphorescent green, red and blue microcavity organic light emitting devices. *Light Sci. Appl.* **2**, e74 (2013).
- Xiao, Z. G. et al. Efficient perovskite light-emitting diodes featuring nanometre-sized crystallites. *Nat. Photonics* **11**, 108–115 (2017).
- Motti, S. G. et al. Heterogeneous photon recycling and charge diffusion enhance charge transport in quasi-2D lead-halide perovskite films. *Nano Lett.* **19**, 3953–3960 (2019).
- Zhou, Y., Xiao, Y., Chi, S. M. & Qian, X. H. Isomeric boron-fluorine complexes with donor-acceptor architecture: Strong solid/liquid fluorescence and large Stokes shift. *Org. Lett.* **10**, 633–636 (2008).
- Jin, J. L. et al. Theoretical insight into the origin of large Stokes shift and photophysical properties of anilido-pyridine boron difluoride dyes. *ChemPhysChem* **13**, 3714–3722 (2012).
- Stranks, S. D., Hoyer, R. L. Z., Di, D., Friend, R. H. & Deschler, F. The physics of light emission in halide perovskite devices. *Adv. Mater.* **31**, 1803336 (2018).
- Kirchardt, T., Staub, F. & Rau, U. Impact of photon recycling on the open-circuit voltage of metal halide perovskite solar cells. *ACS Energy Lett.* **1**, 731–739 (2016).
- Pazos-Outon, L. M. et al. Photon recycling in lead iodide perovskite solar cells. *Science* **351**, 1430–1433 (2016).
- Richter, J. M. et al. Enhancing photoluminescence yields in lead halide perovskites by photon recycling and light out-coupling. *Nat. Commun.* **7**, 13941 (2016).
- Sha, W. E. I., Ren, X. G., Chen, L. Z. & Choy, W. C. H. The efficiency limit of CH₃NH₃PbI₃ perovskite solar cells. *Appl. Phys. Lett.* **106**, 221104 (2015).
- Fang, Y. J., Wei, H. T., Dong, Q. F. & Huang, J. S. Quantification of re-absorption and re-emission processes to determine photon recycling efficiency in perovskite single crystals. *Nat. Commun.* **8**, 14417 (2017).
- Pazos-Outon, L. M., Xiao, T. P. & Yablonovitch, E. Fundamental efficiency limit of lead iodide perovskite solar cells. *J. Phys. Chem. Lett.* **9**, 1703–1711 (2018).
- Yablonovitch, E., Miller, O. D. & Kurtz, S. R. The opto-electronic physics that broke the efficiency limit in solar cells. *38th IEEE Photovoltaic Specialists Conference*, 001556–001559 (2012)
- Miller, O. D., Yablonovitch, E. & Kurtz, S. R. Strong internal and external luminescence as solar cells approach the Shockley–Queisser limit. *IEEE J. Photovolt.* **2**, 303–311 (2012).
- Ha, S. T., Shen, C., Zhang, J. & Xiong, Q. Laser cooling of organic-inorganic lead halide perovskites. *Nat. Photonics* **10**, 151–121 (2016).
- Edri, E. et al. Elucidating the charge carrier separation and working mechanism of CH₃NH₃PbI_{3-x}Cl_x perovskite solar cells. *Nat. Commun.* **5**, 3461 (2014).
- Stranks, S. D. et al. Electron-hole diffusion lengths exceeding 1 micrometer in an organometal trihalide perovskite absorber. *Science* **342**, 341–344 (2013).
- Tainter, G. D. et al. Long-range charge extraction in back-contact perovskite architectures via suppressed recombination. *Joule* **3**, 1301–1313 (2019).
- Benisty, H., De Neve, H. & Weisbuch, C. Impact of planar microcavity effects on light extraction - prt II: selected exact simulations and role of photon recycling. *IEEE J. Quantum Electron.* **34**, 1632–1643 (1998).
- Gaspar, D. J. & Polikarpov, E. *OLED Fundamentals: Materials, Devices, and Processing of Organic Light-Emitting Diodes*. (CRC Press, 2015).
- Mitsas, C. L. & Siapkas, D. I. Generalized matrix-method for analysis of coherent and incoherent reflectance and transmittance of multilayer structures with rough surfaces, interfaces, and finite substrates. *Appl. Opt.* **34**, 1678–1683 (1995).
- Benisty, H., Stanley, R. & Mayer, M. Method of source terms for dipole emission modification in modes of arbitrary planar structures. *J. Opt. Soc. Am. A* **15**, 1192–1201 (1998).
- Lamboll, R. D. *Two-dimensional modelling of novel back-contact solar cells*. Ph. D. Thesis, University of Cambridge (2017).
- Tomas, M. S. & Lenac, Z. Decay of excited molecules in absorbing planar cavities. *Phys. Rev. A* **56**, 4197–4206 (1997).
- Zhang, Q. et al. Efficient metal halide perovskite light-emitting diodes with significantly improved light extraction on nanophotonic substrates. *Nat. Commun.* **10**, 727 (2019).
- Dung, H. T., Knoll, L. & Welsch, D. G. Intermolecular energy transfer in the presence of dispersing and absorbing media. *Phys. Rev. A* **65**, 043813 (2002).
- Pettersson, L. A. A., Roman, L. S. & Inganäs, O. Modeling photocurrent action spectra of photovoltaic devices based on organic thin films. *J. Appl. Phys.* **86**, 487–496 (1999).
- Lee, J. Y., Connor, S. T., Cui, Y. & Peumans, P. Solution-processed metal nanowire mesh transparent electrodes. *Nano Lett.* **8**, 689–692 (2008).

45. Seo, K. -W., Lee, J., Jo, J., Cho, C. & Lee, J. Y. Highly efficient (>10%) flexible organic solar cells on PEDOT-free and ITO-free transparent electrodes. *Adv. Mater.* **31**, 1902447 (2019).
46. Kang, J. et al. Solution-processed aluminum nanogratings for wire grid polarizers. *Adv. Opt. Mater.* **6**, 1800205 (2018).
47. Bird, G. R. & Parrish, M. The wire grid as a near-infrared polarizer. *J. Opt. Soc. Am.* **50**, 886–891 (1960).
48. Kosten, E. D., Atwater, J. H., Parsons, J., Polman, A. & Atwater, H. A. Highly efficient GaAs solar cells by limiting light emission angle. *Light Sci. Appl.* **2**, e45 (2013).
49. Cho, C. et al. Toward perfect light trapping in thin-film photovoltaic cells: full utilization of the dual characteristics of light. *Adv. Opt. Mater.* **3**, 1697–1702 (2015).
50. De Neve, H. et al. High efficiency planar microcavity LEDs: comparison of design and experiments. *IEEE Photon. Technol. Lett.* **7**, 287–289 (1995).
51. Benisty, H., De Neve, H. & Weisbuch, C. Impact of planar microcavity effects on light extraction—Part I: basic concepts and analytical trends. *IEEE J. Quantum Electron.* **34**, 1612–1631 (1998).
52. de Mello, J. C., Wittmann, H. F. & Friend, R. H. An improved experimental determination of external photoluminescence quantum efficiency. *Adv. Mater.* **9**, 230–232 (1997).
53. Cho, C. & Lee, J. Y. Multi-scale and angular analysis of ray-optical light trapping schemes in thin-film solar cells: micro lens array, V-shaped configuration, and double parabolic trapper. *Opt. Express* **21**, A276–A284 (2013).
54. Palik, E. D. & Ghosh, G. *Handbook of Optical Constants of Solids* (Academic Press, 1998).
55. Szabo, Z. Closed form Kramers-Kronig relations to extract the refractive index of metamaterials. *IEEE Trans. Microw. Theory Tech.* **65**, 1150–1159 (2017).
56. Dirin, D. N., Cherniukh, I., Yakunin, S., Shynkarenko, Y. & Kovalenko, M. V. Solution-grown CsPbBr₃ perovskite single crystals for photon detection. *Chem. Mater.* **28**, 8470–8474 (2016).

Acknowledgements

This work was supported by the Engineering and Physical Sciences Research Council (EPSRC), U.K. [EP/M005143/1] and by a National Research Foundation of Korea (NRF) grant funded by the South Korean government (MSIT) (No. NRF-2019R1A2C3008035). D.D. acknowledges support from the National Natural Science Foundation of China (NSFC) (61975180), the National Key R&D Program of China (2018YFB2200401), the Fundamental Research Funds for the Central Universities (2019QNA5005) and Zhejiang University Education Foundation Global Partnership Fund.

Author contributions

C.C., D.D., F.D. and N.C.G. conceived the idea. J.-Y.L., R.H.F., D.D., F.D. and N.C.G. supervised the work. B.Z. fabricated and optimised perovskite films and PeLEDs. B.Z. characterised UV-vis transmission of perovskite film and optoelectrical performance of PeLEDs. C.C. performed all other experiments including PL and PLE characterisation and spatial PL/EL analysis. G.D.T. contributed to the installation of spatial PL/EL system. C.C. developed and performed the presented optical modelling. All authors discussed the data and contributed to the manuscript.

Competing interests

N.G. and R.H.F. are founders of a company commercialising perovskite LEDs. The other authors declare no competing financial or non-financial interests.

Additional information

Supplementary information is available for this paper at <https://doi.org/10.1038/s41467-020-14401-1>.

Correspondence and requests for materials should be addressed to D.D., F.D. or N.C.G.

Peer review information *Nature Communications* thanks the anonymous reviewers for their contribution to the peer review of this work.

Reprints and permission information is available at <http://www.nature.com/reprints>

Publisher's note Springer Nature remains neutral with regard to jurisdictional claims in published maps and institutional affiliations.



Open Access This article is licensed under a Creative Commons Attribution 4.0 International License, which permits use, sharing, adaptation, distribution and reproduction in any medium or format, as long as you give appropriate credit to the original author(s) and the source, provide a link to the Creative Commons license, and indicate if changes were made. The images or other third party material in this article are included in the article's Creative Commons license, unless indicated otherwise in a credit line to the material. If material is not included in the article's Creative Commons license and your intended use is not permitted by statutory regulation or exceeds the permitted use, you will need to obtain permission directly from the copyright holder. To view a copy of this license, visit <http://creativecommons.org/licenses/by/4.0/>.

© The Author(s) 2020