

**RESEARCH ARTICLE**

# Kras promotes myeloid differentiation through Wnt/ $\beta$ -catenin signaling

Noriko Yokoyama<sup>1</sup> | Yeon-Jeong Kim<sup>2</sup> | Yoshio Hirabayashi<sup>1,3</sup> | Yoko Tabe<sup>4</sup> |  
 Kenji Takamori<sup>1</sup> | Hideoki Ogawa<sup>1</sup> | Kazuhisa Iwabuchi<sup>1,5,6</sup>

<sup>1</sup>Institute for Environmental and Gender Specific Medicine, Juntendo University Graduate School of Medicine, Urayasu Chiba, Japan

<sup>2</sup>Laboratory for Neuronal Growth Mechanisms, Riken Brain Science Institutes, Saitama, Japan

<sup>3</sup>Cellular Informatics Laboratory, RIKEN, Wako, Saitama, Japan

<sup>4</sup>Department of Laboratory Medicine, Juntendo University School of Medicine Hospital, Hongo, Tokyo, Japan

<sup>5</sup>Infection Control Nursing, Juntendo University Graduate School of Health Care and Nursing, Urayasu Chiba, Japan

<sup>6</sup>Laboratory of Biochemistry, Juntendo University Faculty of Health Care and Nursing, Urayasu Chiba, Japan

**Correspondence**

Noriko Yokoyama, Institute for Environmental and Gender Specific Medicine, Juntendo University Graduate School of Medicine, Urayasu Chiba 279-0021, Japan.

Email: n-yokoyama@juntendo.ac.jp

**Funding information**

Foundation of Strategic Research Projects in Private Universities, Grant/Award Number: S1311011; MEXT KAKENHI, Grant/Award Number: 18H00451; AMED, Grant/Award Number: JP18gm0910006

**Abstract**

Wild-type Kras, a small GTPase, inactivates Ras growth-promoting signaling. However, the role of Kras in differentiation of myeloid cells remains unclear. This study showed the involvement of Kras in a novel regulatory mechanism underlying the dimethyl sulfoxide (DMSO)-induced differentiation of human acute myeloid leukemia HL-60 cells. Kras was found to positively regulate DMSO-induced differentiation, with the activity of Kras increasing upon DMSO. Inhibition of Kras attenuated CD11b expression in differentiated HL-60 cells. GSK3 $\beta$ , an important component of Wnt signaling, was found to be a downstream signal of Kras. Phosphorylation of GSK3 $\beta$  was markedly enhanced by DMSO treatment. Moreover, inhibition of GSK3 $\beta$  enhanced CD11b expression and triggered the accumulation in the nucleus of  $\beta$ -catenin and Tcf in response to DMSO. Inhibitors of  $\beta$ -catenin-mediated pathways blocked CD11b expression, further indicating that  $\beta$ -catenin is involved in the differentiation of HL-60 cells. Elevated expression of C/EBP $\alpha$  and C/EBP $\epsilon$  accompanied by the expression of granulocyte colony-stimulating factor (G-CSF) receptor was observed during differentiation. Taken together, these findings suggest that Kras engages in cross talk with the Wnt/ $\beta$ -catenin pathway upon DMSO treatment of HL-60 cells, thereby regulating the granulocytic differentiation of HL-60 cells. These results indicate that Kras acts as a tumor suppressor during the differentiation of myeloid cells.

**KEYWORDS**

GSK3 $\beta$ , HL-60 cell differentiation, tumor suppressor, wild-type Kras, Wnt/ $\beta$ -catenin

**Abbreviations:** AKT, protein kinase B; AML, acute myeloid leukemia; C/EBP, CCAAT/enhancer-binding protein; DHL-60, HL-60 cells differentiated into neutrophilic lineage; DMSO, dimethyl sulfoxide; G-CSF, granulocyte colony-stimulating factor; PMCA, calcium pump pan PMCA ATPase; SDS-PAGE, sodium dodecyl sulfate-polyacrylamide gel electrophoresis; Tcf/Lef, T-cell factor/lymphoid enhancer factor.

This is an open access article under the terms of the Creative Commons Attribution License, which permits use, distribution and reproduction in any medium, provided the original work is properly cited.

© 2019 The Authors.

## 1 | INTRODUCTION

The *Ras* genes encode small GTP-binding proteins that are involved in many cellular processes, including proliferation, differentiation, and apoptosis.<sup>1</sup> Wild-type *Ras* proteins have intrinsic GTPase activity, catalyzing the hydrolysis of bound GTP to GDP and thereby inactivating *Ras* growth-promoting signaling. In contrast, mutant *Ras* is locked into the GTP-bound state, leading to constitutive *Ras* signaling.<sup>1,2</sup> Three members of the *Ras* family, *Hras*, *Kras*, and *Nras*, were found to be activated by mutation in various human cancers.<sup>1</sup>

*Ras* isoforms are ubiquitously expressed and highly homologous, but have specific and distinct molecular functions.<sup>1</sup> In acute myeloid leukemia (AML) and related myelodysplastic syndromes, the most frequently mutated genes are *N-* and *Kras*.<sup>3</sup> Despite the high frequency of *N-* and *Kras* mutations in AML, the precise roles of *ras* oncogenes in leukemogenesis remain unclear. *Kras* knockout is embryonically lethal in mice, whereas *Hras* and *Nras* double knockout mice develop normally.<sup>4</sup> These findings indicate that *Kras* is essential for normal mouse development, whereas *Hras* and *Nras* are not.<sup>5</sup>

Mutants of *Kras* play essential roles during malignant transformation in human cancers.<sup>1,6,7</sup> Mutated *Kras* induces tumor cell migration through the activation of the MAPKs and PI3K/AKT pathways.<sup>2,8</sup> *Kras* conditional knockout mice develop profound hematopoietic defects, including splenomegaly, an expanded neutrophil compartment, and reduced B-cell number, indicating that *Kras* is required for adult hematopoiesis.<sup>9</sup> Hematopoietic cell-specific deletion of *Kras* impaired B-cell development, but did not affect T-cell development,<sup>10</sup> suggesting that, despite its oncogenic activity, *Kras* plays distinct roles in hematopoietic stem cells.

Evidence has suggested that wild-type *Kras* is involved in other than oncogenic activity.<sup>11-13</sup> For example, the expression of p21<sup>Ras</sup> proteins is upregulated during the differentiation of HL-60 cells.<sup>14</sup> Less is known, however, about the contribution of the *Kras* signaling pathway to differentiation processes. This study therefore focused on novel functions of *Kras* and *Kras*-mediated signaling networks in the differentiation of the human acute myeloid leukemia cell line HL-60, which is one of the most common forms of leukemia cell lines and widely used in studies of human myeloid cell differentiation.<sup>15</sup> HL-60 cells are neutrophilic promyelocytes, which can be differentiated into neutrophil-like, monocyte-like, or eosinophil-like cells depending on the method of differentiation. For example, HL-60 cells can be differentiated into granulocytic cells upon exposure to polar compounds such as dimethyl sulfoxide (DMSO).<sup>16</sup> However, the detailed mechanisms underlying the myeloid differentiation of HL-60 cells remain unclear.

Wnt signaling is involved in many cellular events, including development, proliferation, differentiation, and migration.<sup>17-19</sup> Aberrant canonical or non-canonical Wnt signaling is involved in the pathogenesis of various cancers including AML.<sup>18</sup> The Wnt/ $\beta$ -catenin pathway has been shown to play essential roles in regulating the proliferation, differentiation, and apoptosis of hematopoietic stem cells.<sup>20</sup> However, the exact functions of the Wnt signaling pathway in leukemia have not yet been fully clarified, with various studies yielding conflicting results. The protein  $\beta$ -catenin is essential to the canonical Wnt cascade, and its stability is controlled by a destruction complex consisting of  $\beta$ -catenin, the adenomatous polyposis coli (APC) protein, the cytoplasmic serine/threonine kinase GSK3 $\beta$ , CK1, and Axin. Phosphorylation of  $\beta$ -catenin by CK1 and GSK3 $\beta$  turns off Wnt signaling. Phosphorylated  $\beta$ -catenin, in turn, is degraded through proteasomes.<sup>21-23</sup> In contrast, activation of Wnt signaling results in the phosphorylation of GSK3 $\beta$  at Ser 9, inactivating GSK3 $\beta$  activity and leading to the accumulation of non-phosphorylated  $\beta$ -catenin in the cytoplasm. This accumulated  $\beta$ -catenin translocates into the nucleus and interacts with the transcription factors T-cell factor/lymphoid enhancer factor (Tcf/Lef), activating the transcription of target genes.<sup>21-23</sup> Activation of Tcf/Lef signaling reduces apoptosis of normal progenitor cells.<sup>24</sup>

The CCAAT/enhancer-binding protein (C/EBP) is a modular protein, containing a carboxy-terminal leucine zipper dimerization domain, a DNA-binding domain, and an N-terminal activation domain. C/EBP $\alpha$  is highly expressed in myeloblastomas, and C/EBP $\alpha$ -deficient mice fail to undergo myeloid differentiation.<sup>25</sup> C/EBP $\alpha$  acts as a molecular switch during early hematopoietic development.<sup>26</sup> Neutrophilic differentiation is dependent on C/EBP $\alpha$ , which, in turn, is directly regulated by Lef-1.<sup>27</sup> Thus, Lef-1 plays a crucial role in neutrophilic granulopoiesis, and C/EBP $\epsilon$ , which is expressed only in hematopoietic tissues, is especially important in normal myeloid development.<sup>28</sup> C/EBP $\epsilon$  is essential for the terminal differentiation and functional maturation of granulocyte progenitor cells.<sup>29</sup> Functional neutrophils are absent from C/EBP $\epsilon$ -deficient mice,<sup>29</sup> and treatment of HL-60 cells with DMSO for 3 days has been reported to increase the expression of the C/EBP $\epsilon$  gene.<sup>30</sup>

Low concentrations of DMSO remove surface water from phospholipid bilayers,<sup>31</sup> suggesting that DMSO affects the fluidity of plasma membranes and activates several biological functions of cells. Although DMSO induces HL-60 cell differentiation, the mechanisms that regulate this differentiation process have not yet been fully elucidated.  $\beta$ -Catenin expression is upregulated in most AMLs, whereas treatments targeting  $\beta$ -catenin are not always successful in patients with AML.<sup>20</sup> Wnt signaling in hematopoiesis is complex, but the involvement of Wnt/ $\beta$ -catenin signaling in leukemia stem cell development remains unclear.<sup>20</sup>



This study therefore assessed the mechanism underlying the myeloid differentiation of HL-60 cells, including the involvement of  $\beta$ -catenin. HL-60 cells were induced by DMSO to differentiate into granulocytic cells, and the signaling pathways involved in this differentiation were examined. This study found that Kras activity was upregulated and that there was cross talk between Kras and Wnt/ $\beta$ -catenin signaling in DMSO-differentiated HL-60 cells, suggesting a novel function of Kras. Moreover, this study found that elevated expression of C/EBP $\alpha$ , C/EBP $\epsilon$ , and G-CSF receptor was involved in the differentiation of HL-60 cells.

## 2 | MATERIALS AND METHODS

### 2.1 | Materials

DMSO, anti- $\beta$ -catenin antibody, RPMI 1640, and pyrvinium pamoate were from Sigma-Aldrich (St. Louis, MO). Complete protease inhibitor cocktail (Complete) was from Roche Diagnostics (Tokyo, Japan). CHIR-99021 was from Focus Biomolecules (Plymouth Meeting, PA). PPKF115-584 was from BioVision, Inc (Milpitas, CA). Immobilon membrane was from Millipore (Bedford, MA). The Kras inhibitor SAH-SOS1A was from Merck (Darmstadt, Germany). Anti-Lamin B1, anti-C/EBP $\alpha$ , anti-C/EBP $\epsilon$ , anti-calcium pump pan PMCA ATPase (PMCA), anti-G-CSF receptor antibodies, and AKT inhibitor (AKTi-1/2) were from Abcam (San Francisco, CA). Anti-GSK3 $\beta$ , anti-p-GSK3 $\beta$  (Ser9), and anti-Tcf4/Tcf7L2 antibodies were from Cell Signaling Technology (Danvers, MA). Anti-G-CSF antibody was from R&D Systems (Minneapolis, MN). Human Kras and control siRNAs were from Dharmacon (Lafayette, CO). PE-labeled mouse IgG1k isotype control and PE-labeled anti-human CD11b were from eBioscience, Inc (San Diego, CA). Nuclear Extract Kits were from Active Motif (Carlsbad, CA), and Kras Activation Assay Kits were from Cell Biolabs, Inc (San Diego, CA). The luciferase assay system was from Promega Corporation (Madison, WI). Plasmids of Super8xTOPFlash (M50) and Super8xFOPFlash (M51) were kind gifts from Dr. Craig C. Malbon (State university of New York at Stony Brook, Stony Brook, NY).

### 2.2 | Cell culture and transfection

HL-60 cells were purchased from the American Type Culture Collection (ATCC; Manassas, VA) and were maintained in RPMI 1640 medium supplemented with 10% fetal bovine serum (FBS) and penicillin/streptomycin at 37°C in 5% CO<sub>2</sub>. HL-60 cells in this study were regarded as a model of AML, not acute promyelocytic leukemia (APL), because these cells were negative for promyelocytic leukemia/retinoic acid receptor alpha (PML-RARA). HL-60 cells were differentiated into neutrophilic lineage cells (DHL-60) by culture in medium containing 1.3% DMSO for the indicated times.

In some experiments, cells were transfected with control or Kras siRNA using an Amaxa Nucleofector Kit (Amaxa Biosystems, RONZA, Japan) according to the manufacturer's protocol, followed by further culture for 96 hours in RPMI 1640 medium supplemented with 20% FBS plus 1.3% DMSO.

### 2.3 | Cellular lysates

HL-60 and DHL-60 cells ( $1 \times 10^7$  cells each) were lysed with 250  $\mu$ l of RIPA buffer (50 mmol/L Tris-HCl, pH 7.2, 150 mmol/L NaCl, 5 mmol/L EDTA, 2 mmol/L sodium orthovanadate, 1% NP-40, 0.25% sodium deoxycholate, 0.05% SDS) for 30 minutes at 4°C. The lysates were centrifuged for 10 minutes at 20 800 $\times$  g, and 20  $\mu$ l aliquots were subjected to SDS-PAGE and analyzed by Western blotting with the indicated antibodies.

### 2.4 | Fractionation of cytoplasm and plasma membrane

HL-60 and DHL-60 cells ( $1 \times 10^8$  cells each) were washed twice with PBS, pretreated with 5 mmol/L isopropyl fluorophosphates (DFP) in PBS for 10 minutes, suspended in 2.5 ml of relaxation buffer (100 mmol/L KCl, 3.5 mmol/L MgCl<sub>2</sub>, 1 mmol/L ATP-2Na, 10 mmol/L PIPES, pH 7.3), and homogenized by nitrogen cavitation for 20 minutes at 400 psi on ice. Each fraction was dropped into a tube containing EDTA (final concentration, 1.25 mmol/L), and the tubes were centrifuged at 450 $\times$  g for 10 minutes. The supernatants were decanted and further centrifuged at 4900 $\times$  g for 20 minutes at 4°C to remove granules. Plasma membrane and cytoplasm fractions were separated by centrifuging these supernatants at 70 000 $\times$  g for 1 hour. Each precipitated membrane fraction was suspended in 150  $\mu$ l of RIPA buffer containing protease inhibitor cocktail (Complete). The supernatant fractions were regarded as cytoplasm. Aliquots (20  $\mu$ l) of cytoplasm and plasma membrane fractions were subjected to SDS-PAGE and analyzed by Western blotting with the indicated antibodies.

### 2.5 | Extraction of nuclear fraction

Nuclear fractions were prepared using Nuclear Extract Kits (Active Motif), according to the manufacturer's instructions. Briefly, HL-60 and DHL-60 cells ( $2 \times 10^7$  cells each) were washed twice with PBS, suspended in 1 ml hypotonic buffer, and incubated on ice for 15 minutes. After detergent was added to the samples, the suspensions were centrifuged at 14 000 $\times$  g for 30 seconds at 4°C. The pellets were resuspended in 100  $\mu$ l of lysis buffer AMI-containing protease inhibitors and 10 mmol/L DTT, and incubated on ice for 30 minutes. Suspensions were centrifuged for 10 minutes at 14 000 $\times$  g. Supernatants were regarded as the nuclear fraction. Proteins (20  $\mu$ g) were analyzed by Western blotting with the indicated antibodies.

## 2.6 | Western blotting

Proteins were separated on SDS-polyacrylamide gels and transferred to Immobilon membranes. The blots were incubated with the antibodies indicated in the figure legends. Immune complexes were detected by incubation with horseradish peroxidase (HRP)-conjugated antibody and measurement of ECL chemiluminescence (Pierce Biotechnology, Rockland, IL). To measure the relative amount of proteins, blots were incubated with primary antibodies to the respective phosphorylated or target proteins and then with HRP-conjugated secondary antibodies. Membranes were stripped of antibodies by incubation with stripping buffer (62.5 mmol/L Tris-HCl, pH 6.8, 100 mmol/L  $\beta$ -mercaptoethanol, 2% SDS) for 30 minutes at 55°C and re-probed with antibodies to each protein corresponding to the first antibodies. Bands detected by ECL chemiluminescence were scanned, and chemiluminescence signal intensities were quantified using the ImageJ program (US National Institutes of Health; <http://rsb.info.nih.gov/ij/>). The level of phosphorylation or amount of each protein was determined as the ratio of the band intensity of first blots to that of the second blots.

## 2.7 | Flow cytometry

Differentiation was assessed by flow cytometry assays of CD11b expression on cell surfaces. HL-60 and DHL-60 cells ( $5 \times 10^5$  cells each) were incubated with PE-conjugated anti-human CD11b or PE-conjugated mouse IgG1k isotype for 30 minutes on ice. The cells were washed twice with PBS, resuspended in PBS, and analyzed by flow cytometry.

## 2.8 | Kras pull-down assays

Kras activity was assayed using Kras Activation Assay Kits (Cell Biolabs, Inc) according to the manufacturer's protocol. Briefly, HL-60 and DHL-60 cells ( $2 \times 10^7$  cells each) were lysed in 1 ml lysis buffer (25 mmol/L HEPES, pH 7.5, 150 mmol/L NaCl, 1% NP-40, 10 mmol/L  $MgCl_2$ , 1 mmol/L EDTA, 2% glycerol), and the lysates were incubated with Raf1 RBD agarose beads for 3 hours at 4°C. The beads were collected by centrifugation and washed thrice with assay buffer. Kras was eluted from beads using Laemmli sample buffer. The samples were subjected to SDS-PAGE, and pull-down of active Kras was assessed by Western blotting with anti-Kras antibody. The blots were scanned and quantified using ImageJ software (NIH).

## 2.9 | Lef/Tcf-sensitive transcriptional reporter gene assay

HL-60 or DHL-60 cells were transfected with either Super8x TOPFlash (M50) or Super8x FOPFlash (M51). After 24 hours, the cells were harvested and lysed in a reporter gene lysis buffer. Luciferase activity of the cell extracts was assayed according to the manufacturer's instructions (Promega Corp, Madison, WI) and normalized relative to the protein concentration of the respective lysate. In separate experiments, cells were co-transfected with siRNAs and M50. Cells were cultured in medium with 1.3% DMSO for 4 days. Cell lysates were assayed for luciferase activity.

## 2.10 | Statistical analysis

Data are presented as the mean  $\pm$  SE. Statistical analysis was performed by Student's *t* tests.

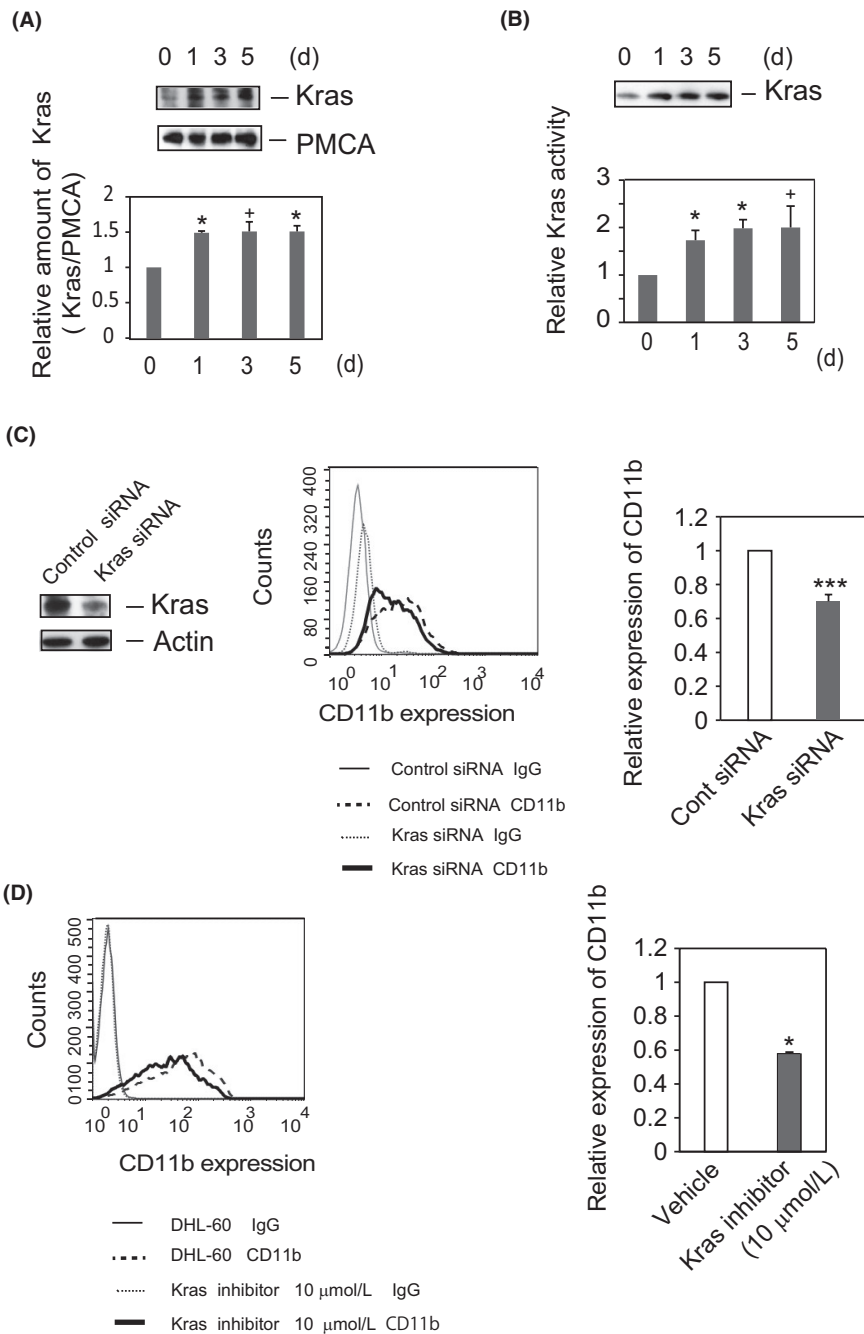
**FIGURE 1** Kras positively regulates the DMSO-induced differentiation of HL-60 cells. (A) *The amount of Kras is increased in plasma membranes during differentiation of HL-60 cells.* HL-60 cells were cultured in RPMI medium, with or without 1.3% DMSO, for the indicated times. Plasma membrane fractions were prepared, subjected to SDS-PAGE, and analyzed by Western blotting with antibody to Kras, followed by incubation with anti-PMCA antibody, as described in *the Materials and Methods*. The blots shown are representative of five independent experiments (upper panel). Quantified Kras levels (Kras/PMCA) are displayed as ratio to those in HL-60 cells (time = 0) and shown as the means  $\pm$  SE of five independent experiments. \**P* < 0.05, +*P* < 0.1. (B) *Kras is activated in DHL-60 cells.* Kras activity was assayed using Kras Activation Assay Kits. HL-60 or DHL-60 cell lysates were incubated with Raf1 RBD agarose to capture the active form of Kras. The amounts of bound proteins were analyzed by Western blotting with anti-Kras antibody. A representative blot of four independent experiments is shown (upper panel). Active Kras was detected by immunoblotting with anti-Kras antibody. The amounts of the active form of Kras were calculated relative to the numbers of cells, and the time course of the ratio of the normalized amount of activated Kras relative to that of resting cells (HL-60 cells at *t* = 0) was determined. Quantified results are shown as means  $\pm$  SE of four independent experiments. \**P* < 0.05, +*P* < 0.1. (C) *Knockdown of Kras attenuates CD11b expression in DHL-60 cells.* HL-60 cells were transfected with the indicated siRNA and cultured in RPMI medium containing 1.3% DMSO for 4 days. Cell lysates were analyzed by Western blotting with anti-Kras or anti-actin antibody. The blot shown is representative of eight independent experiments (left panel). CD11b expression was analyzed by flow cytometry. Data representative of four independent experiments are shown (middle panel). IgG; normal IgG-staining cells. The ratio relative to the cells transfected with control siRNA is shown as mean  $\pm$  SE of four independent experiments (right panel). \*\*\**P* < 0.005. (D) *Kras inhibitor attenuates the expression of CD11b in DHL-60 cells.* Cells were cultured in RPMI medium containing DMSO (1.3%) with or without Kras inhibitor (10  $\mu$ mol/L) for 5 days. CD11b expression was analyzed by flow cytometry. Data representative of four independent experiments are shown (left panel). The ratio of the geometric mean of CD11b expression on the cells treated with Kras inhibitor to that on cells treated with vehicle is shown as the mean  $\pm$  SE of four independent experiments (right panel). \**P* < 0.05

### 3 | RESULTS

#### 3.1 | Kras translocates to the plasma membrane and is activated during DMSO-induced differentiation of HL-60 cells

N- and Kras mutations have been observed in some patients with AML, although mutations in *ras* oncogenes alone are not sufficient to induce leukemogenesis. The precise roles of *ras* oncogenes in AML remain unclear. Knockout studies have suggested that Kras has specific functions in signaling pathways not shared by other members of *ras* family.<sup>4</sup> We therefore assessed whether wild-type Kras has distinct and

novel functions in the differentiation of HL-60 cells. Wild-type Kras is present in the HL-60 cells used in this study (data not shown). Ras activity relies on proper anchoring to the plasma membrane, and Ras proteins activate signaling pathways by recruiting effectors to the membrane. We therefore assessed whether the amounts of Kras in the plasma membrane change during DMSO-induced differentiation of HL-60 cells. Immunoblotting of DHL-60 cells with anti-Kras antibody showed that the amounts of Kras in plasma membrane fractions were increased during differentiation of HL-60 cells, whereas Western immunoblotting with antibody to PMCA, a plasma membrane marker protein, showed that the amounts of PMCA were unchanged during differentiation



(Figure 1A). The total amount of Kras in these cells, however, was unchanged during differentiation (Figure S1), indicating that Kras is translocated to the plasma membrane during DMSO-induced differentiation of HL-60 cells.

Although Kras was not fully active in undifferentiated HL-60 cells, DMSO-induced differentiation increased the Kras activity in whole cell lysates by 1.75-fold, an increase sustained for 5 days after treatment with DMSO (Figure 1B). This finding that Kras was activated upon DMSO treatment suggested that Kras activation is involved in the DMSO-induced differentiation of HL-60 cells.

### 3.2 | Kras knockdown or treatment with Kras inhibitor attenuates CD11b expression in DHL-60 cells

To further investigate the roles of Kras in HL-60 cell differentiation, these cells were treated with Kras or control siRNA for 4 days in the presence of DMSO. Kras siRNA reduced the level of Kras protein to about 35% of that in control siRNA-treated cells (Figure 1C) and the expression of CD11b protein to 68% of that in control siRNA-treated cells, indicating that Kras is involved in the DMSO-induced differentiation of HL-60 cells. In the absence of DMSO, however, the expression of CD11b was unaffected by transfection with either control or Kras siRNA (Figure S2).

To further assess the functions of Kras in DHL-60 cells, HL-60 cells were cultured with DMSO in the presence of the Kras inhibitor SAH-SOS1A or vehicle for 5 days. Similar to the transfection of Kras siRNA, Kras inhibitor attenuated the expression of CD11b by 40% compared with vehicle (Figure 1D). Taken together, these findings demonstrate that Kras mediates the DMSO-induced differentiation of HL-60 cells.

### 3.3 | Inhibition of GSK3 $\beta$ enhances DMSO-induced differentiation of HL-60 cells

The serine-/threonine-specific protein kinase GSK3 $\beta$  plays a pivotal role in the Wnt canonical pathway.<sup>32</sup> Phosphorylation of GSK3 $\beta$  is a good indicator of the Wnt canonical pathway, as phosphorylation of GSK3 $\beta$  at Ser 9 inhibits GSK3 $\beta$  activity.<sup>33</sup> In the absence of Wnt signaling,  $\beta$ -catenin is degraded by a complex of proteins, including GSK3 $\beta$ , APC, CK1, protein phosphatase 2A, and E3-ubiquitin ligase  $\beta$ -TrCP. Phosphorylation of  $\beta$ -catenin by GSK3 $\beta$  and CK1 regulates its stability.<sup>18,19,22</sup> To investigate the possibility of cross talk between the Wnt and Kras signaling pathways during the differentiation of HL-60 cells, we first assessed whether DMSO treatment induces GSK3 $\beta$  phosphorylation (Figure 2A). Phosphorylation of GSK3 $\beta$  (Ser 9), which was almost undetectable in resting HL-60 cells, was enhanced 10-fold by treatment with DMSO for 5 days, whereas total amounts

of GSK3 $\beta$  were unchanged (Figure 2A), indicating that the Wnt/ $\beta$ -catenin pathway participates in the DMSO-induced differentiation of HL-60 cells. To more precisely analyze these findings, we investigated the level of phosphorylated GSK3 $\beta$  in cytoplasm. Although the amount of GSK3 $\beta$  in cytoplasm was unaffected by DMSO, GSK3 $\beta$  phosphorylation (p-GSK3 $\beta$ /GSK3 $\beta$ ) was enhanced twofold after treatment with DMSO for 3 days and was sustained for up to 5 days (Figure 2B).

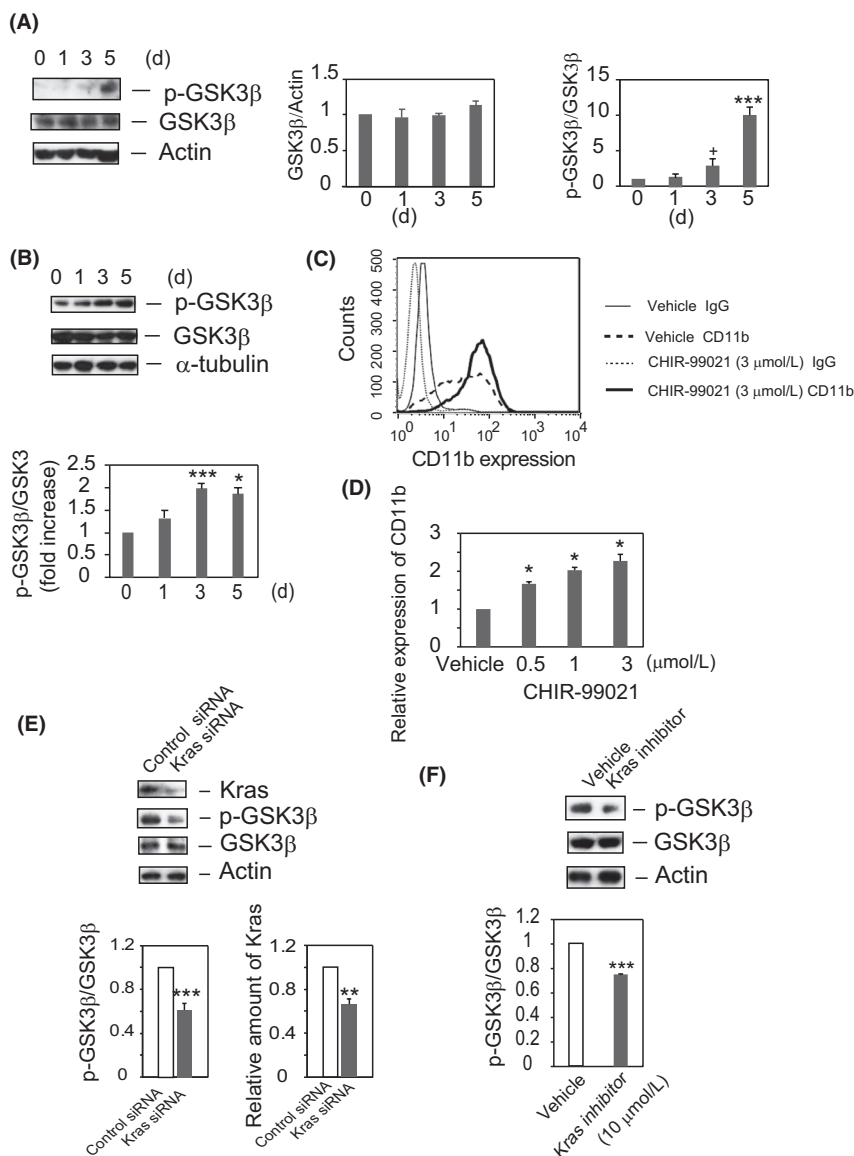
Because the GSK3 $\beta$  inhibitor CHIR-99021 has been found to activate Wnt signaling,<sup>34</sup> the involvement of GSK3 $\beta$  in the DMSO-induced differentiation of HL-60 was assessed by treating these cells with CHIR-99021. HL-60 cells were incubated with DMSO in the presence or absence of CHIR-99021 (3  $\mu$ mol/L) for 5 days. Flow cytometry analysis showed that CHIR-99021 dose-dependently enhanced CD11b expression (Figure 2C, 2D), indicating that the suppression of GSK3 $\beta$  activity is an important step in the DMSO-induced differentiation of HL-60 cells and suggesting the involvement of the Wnt/ $\beta$ -catenin pathway.

### 3.4 | Phosphorylation of GSK3 $\beta$ is attenuated by inhibition of Kras

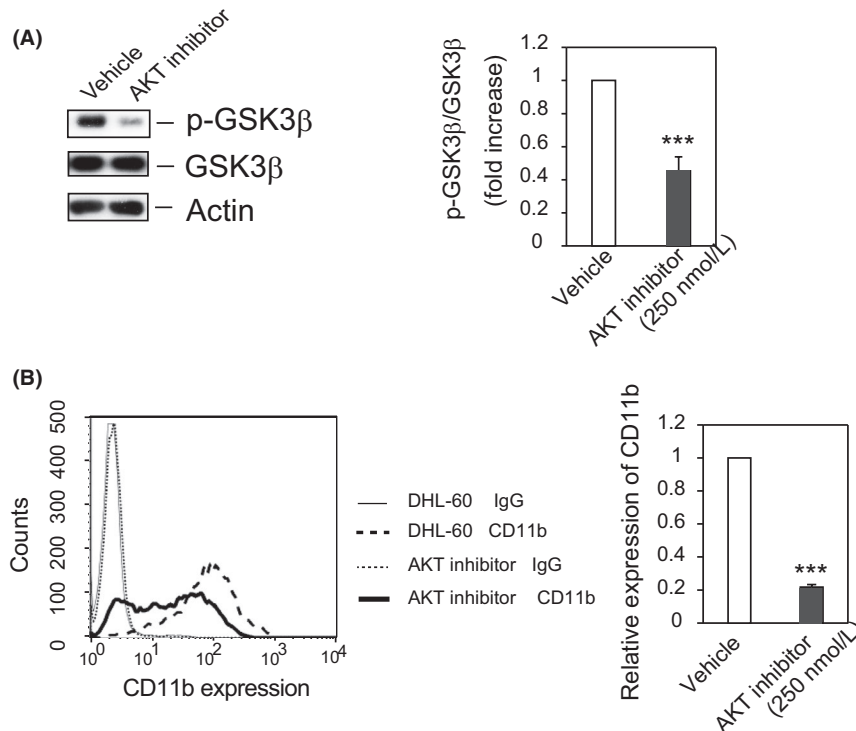
To determine whether GSK3 $\beta$  acts downstream of Kras, the phosphorylation status of GSK3 $\beta$  was assessed in cells transfected with Kras siRNA. HL-60 cells were transfected with Kras or control siRNA, and differentiation was induced by DMSO. Compared with cells treated with control siRNA, cells treated with Kras siRNA showed a 35% reduction in Kras protein level (Figure 2E, right panel). Kras siRNA also reduced the phosphorylation of GSK3 $\beta$  at Ser 9 by 40% compared with control siRNA, although the total amounts of GSK3 $\beta$  in these cells were unchanged (Figure 2E, left panel). To analyze the effects of a Kras inhibitor on GSK3 $\beta$  phosphorylation, cells were treated with Kras inhibitor or vehicle in the presence of DMSO for 5 days, and GSK3 $\beta$  phosphorylation status was determined. Although similar amounts of GSK3 $\beta$  and actin were present in lysates, GSK3 $\beta$  phosphorylation (p-GSK3 $\beta$ /GSK3 $\beta$ ) was 35% lower in cells treated with Kras inhibitor than with vehicle (Figure 2F), indicating that GSK3 $\beta$  is a downstream effector of Kras.

### 3.5 | PI3K/AKT is an effector molecule for Kras signaling during DMSO-induced differentiation of HL-60 cells

Because PI3K/AKT plays a crucial role in Kras signaling during hematopoiesis,<sup>35</sup> and because GSK3 $\beta$  has been identified as an AKT (protein kinase B) substrate,<sup>36</sup> we assessed whether the PI3K/AKT pathway may be linked to Kras and the differentiation of HL-60 cells. To demonstrate a direct link between AKT and GSK3 $\beta$ , HL-60 cells



**FIGURE 2** GSK3β is phosphorylated and Kras acts upstream of GSK3β in DHL-60 cells. (A) *GSK3β* is markedly phosphorylated in DHL-60 cells. Lysates were analyzed by SDS-PAGE and Western blotting with the indicated antibodies. The blots shown are representative of four independent experiments (left panel). The time courses of the GSK3β/actin ratio (middle panel) and of the phosphorylation ratios (p-GSK3β/GSK3β) relative to resting cells (HL-60 cells at  $t = 0$ ) (right panel) are shown as the means  $\pm$  SE of four independent experiments.  $^+P < 0.1$ ,  $^{***}P < 0.005$ . (B) *DMSO* enhances *GSK3β* phosphorylation in cytoplasm. Cytoplasm fractions were analyzed by Western blotting with anti-p-GSK3β, anti-GSK3β, and anti-α-tubulin antibodies. The blots shown are representative of four independent experiments (upper panel). The time courses of the phosphorylation ratios (p-GSK3β/GSK3β) relative to resting cells (HL-60 cells at  $t = 0$ ) are shown as the means  $\pm$  SE of four independent experiments (lower panel).  $^*P < 0.05$ ,  $^{***}P < 0.005$ . (C) *Inhibition of GSK3β* enhances the expression of *CD11b* in DHL-60 cells. HL-60 cells were cultured in RPMI medium containing 1.3% DMSO plus CHIR-99021 (3 μmol/L) or vehicle for 5 days. Expression of *CD11b* was determined by flow cytometry. The results shown are representative of three independent experiments. (D) *Expression of CD11b* is dose-dependently enhanced by *CHIR-99021*. The ratios of *CD11b* expression (geometric mean) of cell treated with CHIR-99021 (0.5, 1, 3 μmol/L) relative to solvent control-treated cells (vehicle) are shown as the means  $\pm$  SE of three independent experiments.  $^*P < 0.05$ . (E) *Knockdown of Kras* inhibits *phospho-GSK3β* generation in DHL-60 cells. Cells transfected with *Kras* or control siRNA were cultured in RPMI medium plus 1.3% DMSO for 4 days. Cell lysates were analyzed by Western blotting with anti-Kras, anti-p-GSK3β, anti-GSK3β, or anti-actin antibody. The results shown are representative of 10 independent experiments (upper panel). The bands were quantified, with phosphorylation ratios (p-GSK3β/GSK3β, lower left panel,  $^{***}P < 0.005$ ) and *Kras* levels (lower right panel,  $^{**}P < 0.01$ ) relative to cells transfected with control siRNA are shown as the means  $\pm$  SE of 10 independent experiments. (F) *Kras* inhibitor inhibits *GSK3β* phosphorylation. Cells were cultured in RPMI medium or RPMI medium plus 1.3% DMSO with or without *Kras* inhibitor (SAH-SOS1A). Cell lysates were analyzed by immunoblotting with antibodies to p-GSK3β, GSK3β, and actin. The results shown are representative of eight independent experiments (upper panel). The bands were quantified, with the result shown being the mean  $\pm$  SE of eight independent experiments.  $^{***}P < 0.005$



**FIGURE 3** AKT acts upstream of GSK3 $\beta$  in DHL-60 cells. (A) AKT is responsible for the phosphorylation of GSK3 $\beta$  in DHL-60 cells. Cells were cultured in RPMI medium plus 1.3% DMSO with AKT inhibitor (AKTi-1/2, 250 nmol/L) or vehicle for 5 days, and cell lysates were analyzed by Western blotting with the indicated antibodies. The results shown are representative of four independent experiments (left panel). Bands were quantified and the ratios of phosphorylated to total GSK3 $\beta$  shown as the mean  $\pm$  SE of four independent experiments (right panel). \*\*\* $P$  < 0.005. (B) AKT inhibitor attenuates the expression of CD11b in DHL-60 cells. CD11b expression was assayed by flow cytometry, with the results shown being representative of three independent experiments (left panel). The ratio of CD11b expression (geometric mean) by AKT inhibitor–treated cells to that by DMSO-treated cells (vehicle) is shown as the mean  $\pm$  SE of three independent experiments (right panel). \*\*\* $P$  < 0.005

were incubated with the AKT inhibitor AKTi-1/2 or vehicle for 5 days in the presence of DMSO. The p-GSK3 $\beta$ /GSK3 $\beta$  ratio was about 50% lower in cells treated with AKTi-1/2, suggesting that AKT is the kinase responsible for phosphorylation of GSK3 $\beta$  (Figure 3A). Furthermore, CD11b expression was reduced to 20% compared with vehicle-treated cells (Figure 3B). PI3K inhibitor also suppressed both GSK3 $\beta$  phosphorylation and CD11b expression, but did not alter GSK3 $\beta$  expression (Figure S3A, B). These findings confirmed that PI3K/AKT is a downstream effector of Kras signaling and that AKT phosphorylates GSK3 $\beta$ .<sup>35,37</sup>

### 3.6 | $\beta$ -catenin and Tcf4 accumulate in the nuclear fraction of DHL-60 cells

Inhibition of GSK3 $\beta$ -catalyzed phosphorylation of  $\beta$ -catenin requires a dynamic multiprotein complex, which includes APC, Axin, and Dishevelled.<sup>22</sup> Because Wnt stimulation triggers shuttling of Axin and  $\beta$ -catenin to the nucleus,<sup>38</sup> one of the hallmarks of activated Wnt signaling is the accumulation of  $\beta$ -catenin in the nucleus.<sup>21–23</sup> We found that inhibition of GSK3 $\beta$  upregulated CD11b expression

in DHL-60 cells. To confirm the involvement of Wnt/ $\beta$ -catenin signaling in the DMSO-induced differentiation of HL-60 cells, we assessed the expression of  $\beta$ -catenin and its transcription factor Tcf4 in cell lysates. In agreement with previous findings,<sup>39</sup> we observed slight expression of  $\beta$ -catenin in resting and early DHL-60 cells, with higher levels of  $\beta$ -catenin and Tcf4 observed only after DMSO treatment for 5 days (Figure S4). The elevated levels of p-GSK3 $\beta$ ,  $\beta$ -catenin, and Tcf4 in cell lysates suggested that  $\beta$ -catenin and Tcf4 may accumulate in the nucleus during the differentiation of HL-60 cells. We found that  $\beta$ -catenin started to accumulate significantly after 1 day of treatment with DMSO, reaching its maximum level after incubation for 5 days with DMSO (Figure 4A). In contrast, Tcf4 accumulation in the nucleus was detected only after incubation with DMSO for 3 days. Obvious accumulation of Tcf4 followed the elevation of  $\beta$ -catenin in the nucleus, whereas levels of Lamin B1, a marker protein of the nuclear fraction, were similar in DMSO-differentiated and resting HL-60 cells. Thus, the amounts of p-GSK3 $\beta$ ,  $\beta$ -catenin, and Tcf4 correlated with each other, indicating that the Wnt/ $\beta$ -catenin pathway is involved in the differentiation of HL-60 cells. Increased levels of p-GSK3 $\beta$  stabilize  $\beta$ -catenin,



**FIGURE 4** Accumulation of  $\beta$ -catenin in nuclei regulates DMSO-induced differentiation of HL-60 cells. (A)

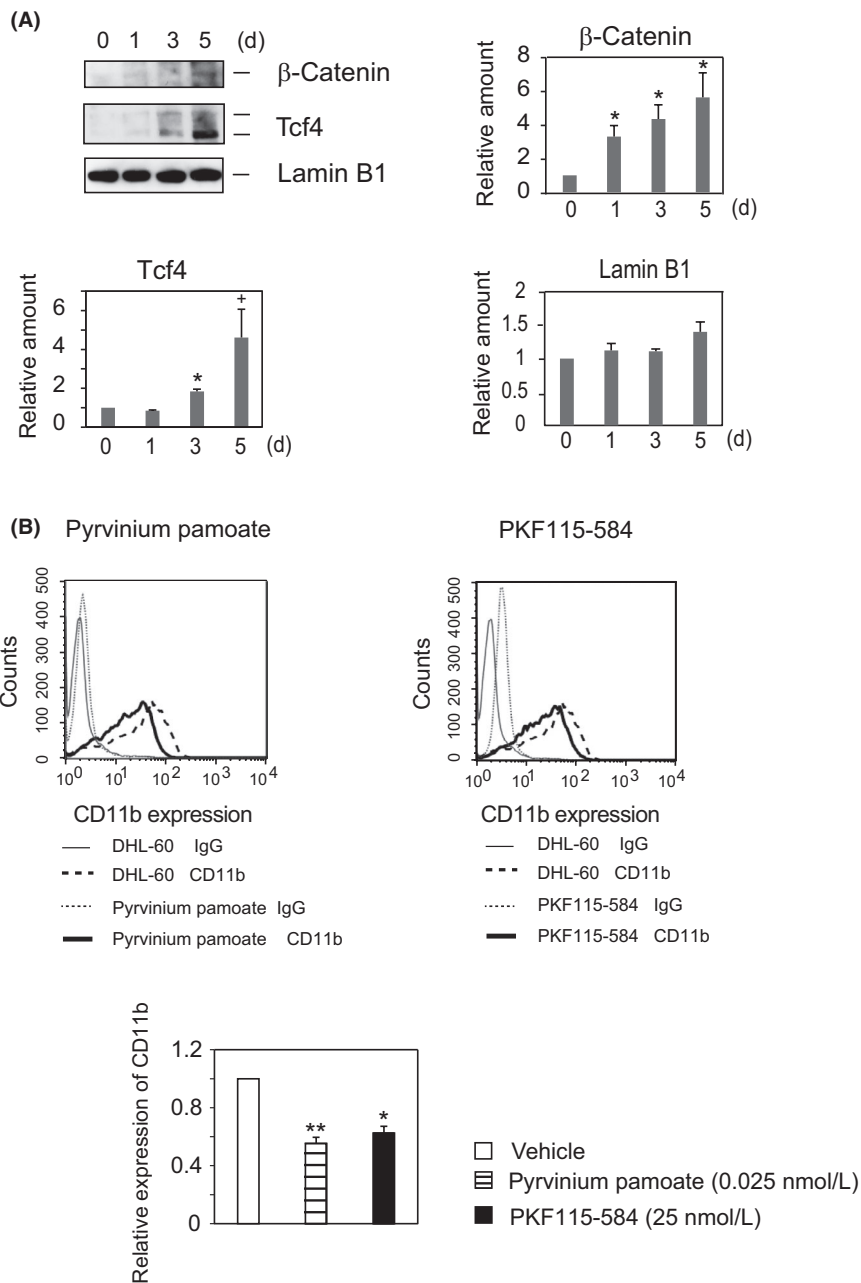
*Accumulation of  $\beta$ -catenin and Tcf4 in the nuclear fraction in response to DMSO.*

Nuclear fractions prepared using Nuclear Extract Kits (Active Motif) were analyzed by Western blotting with anti- $\beta$ -catenin, anti-Tcf4, and anti-Lamin B1 antibodies.

The results shown are representative of six independent experiments (upper left panel). Time course of the expression of  $\beta$ -catenin (upper right panel), Tcf4 (lower left panel), and Lamin B1 (lower right panel) in differentiated cells relative to resting cells (HL-60 cells at  $t = 0$ ). The results are expressed as the means  $\pm$  SE of six independent experiments.  $^+P < 0.1$ ,  $^*P < 0.05$ .

(B)  *$\beta$ -catenin inhibitors attenuate the expression of CD11b in DHL-60 cells.*

HL-60 cells were cultured for 5 days with pyrvinium pamoate (0.025 nmol/L) or RKF115-584 (25 nmol/L) in the presence of DMSO (1.3%), and CD11b expression was determined by flow cytometry. Each of the flowcharts is representative of three independent experiments (upper panels). Ratios of CD11b expression (geometric mean) of the inhibitor-treated cells relative to solvent control (vehicle), expressed as the means  $\pm$  SE of three independent experiments (lower panel).  $^*P < 0.05$ ,  $^{**}P < 0.01$

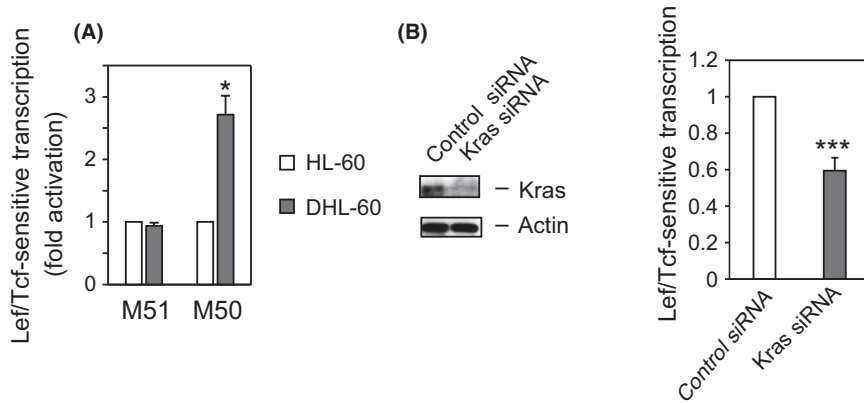


which, in turn, acts as a nuclear transcriptional co-activator with the Lef/Tcf family to stimulate the transcription of various target genes in DHL-60 cells.

### 3.7 | Treatment with $\beta$ -catenin inhibitors attenuates CD11b expression in DHL-60 cells

As reported previously,<sup>39</sup> resting and early differentiated HL-60 cells contain low levels of  $\beta$ -catenin, with the accumulation of  $\beta$ -catenin in the nucleus correlating with the degree of differentiation of HL-60 cells (Figure S4 and Figure 4A). In addition,  $\beta$ -catenin expression is upregulated in most patients with AML.<sup>20</sup> Because the functions of  $\beta$ -catenin have not yet been determined, we assessed whether  $\beta$ -catenin

accumulation in the nucleus promotes the DMSO-induced differentiation of HL-60 cells. Two unrelated compounds, pyrvinium pamoate and PKF115-584, have been found to inhibit the Wnt signaling pathway, pyrvinium pamoate by blocking the transcription of the  $\beta$ -catenin gene and PKF115-584 by being a potent and specific small-molecule inhibitor of  $\beta$ -catenin/Tcf4 interactions.<sup>40</sup> Because both compounds attenuate Tcf4 transcriptional activity, we tested their effects on DMSO-induced differentiation of HL-60 cells. At concentrations lower than their IC<sub>50</sub>s, pyrvinium pamoate (10 nmol/L) and PKF115-584 (0.4  $\mu$ mol/L) attenuated the expression of CD11b by about 40% (Figure 4B). Treatment with PKF115-584 had no effect on cell growth, whereas pyrvinium pamoate enhanced DHL-60 cell proliferation ~10%.



**FIGURE 5** DMSO promotes activation of Lef/Tcf-sensitive transcription. (A) *DMSO enhances Lef/Tcf-sensitive transcription.* HL-60 cells were cultured in RPMI medium without (HL-60) or with (DHL-60) 1.3% DMSO for 4 days, followed by co-transfection for one day with Super8x TOPFlash (M50) or Super8x FOPFlash (M51). The ratio of the activation of Lcf/Tcf-sensitive transcription in DHL-60 cells to that in HL-60 cells is shown as the mean  $\pm$  SE of four independent experiments. \* $P < 0.05$ . (B) *Knockdown of Kras attenuates Lef/Tcf-sensitive transcription in response to DMSO.* HL-60 cells were co-transfected with the indicated siRNA and M50, and cultured in medium containing 1.3% DMSO for 4 days. Cell lysates were analyzed by Western blotting with anti-Kras and anti-actin antibodies (left panel) and for Lef/Tcf-sensitive transcription (right panel). The ratio of the activation of Lcf/Tcf-sensitive transcription in Kras siRNA-treated DHL-60 cells to that in control siRNA-treated DHL-60 cells is shown as the mean  $\pm$  SE of six independent experiments. \*\*\*\* $P < 0.005$

Both inhibitors significantly attenuated CD11b expression, indicating that  $\beta$ -catenin enhances DMSO-induced differentiation of HL-60 cells.

### 3.8 | DMSO activates Lef/Tcf-sensitive transcription

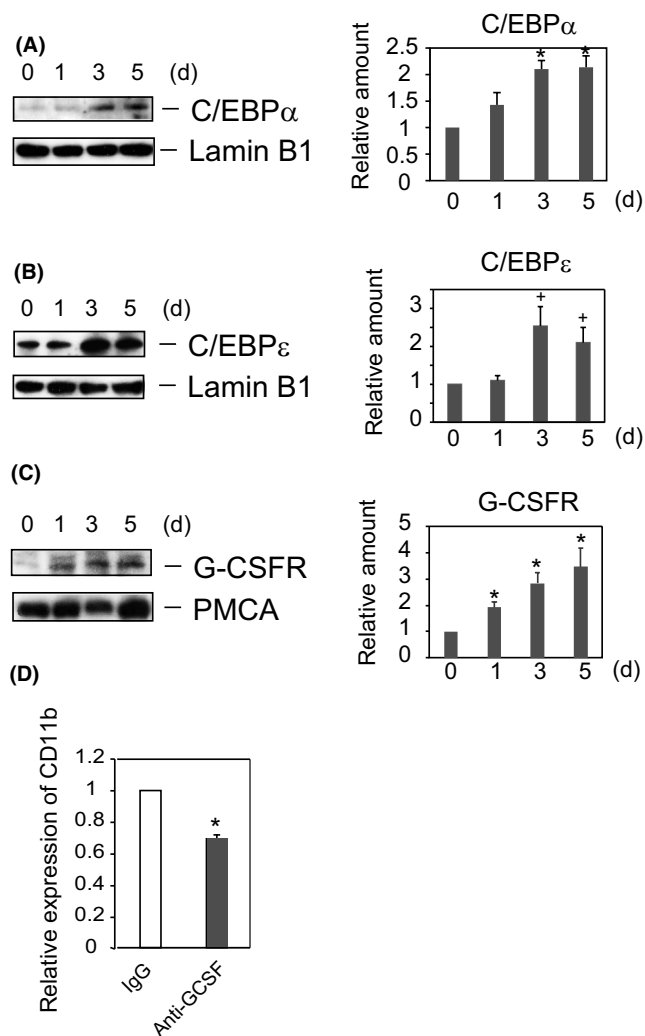
Because activation of Lef/Tcf-sensitive transcription by  $\beta$ -catenin is an early outcome in the Wnt canonical pathway,<sup>18</sup> we analyzed the activity of a Lef/Tcf-sensitive reporter gene, the M50 construct, which harbors multiple  $\beta$ -catenin binding sites in its promoter. The DMSO-induced enhancement of Lef/Tcf transcription activity was found to correlate with the accumulation of  $\beta$ -catenin in the nucleus, and stimulation with DMSO for 4 days triggers M50 reporter genes (Figure 5A). In contrast, DMSO had no effect on the activity of the control gene M51, which lacks  $\beta$ -catenin binding sites in its promoter. To confirm the involvement of the Kras/Wnt/ $\beta$ -catenin signaling network in the DMSO-induced differentiation of HL-60 cells, HL-60 cells were transfected with control or Kras siRNA, along with Super TOPFlash (M50), and cultured in medium containing 1.3% DMSO for 4 days. Lef/Tcf-sensitive transcription was 40% lower in cells transfected with Kras siRNA (Figure 5B), suggesting that the Wnt/ $\beta$ -catenin signaling is downstream of Kras.

### 3.9 | DMSO enhances C/EBP $\alpha$ and C/EBP $\epsilon$ expression in a time-dependent manner

We subsequently assessed the transcription factors that were upregulated following  $\beta$ -catenin accumulation in the

nucleus during DMSO-induced differentiation of HL-60 cells. CCAAT/enhancer-binding proteins (C/EBPs) are transcription factors involved in regulating cell differentiation and proliferation.<sup>41</sup> C/EBP $\alpha$  and C/EBP $\epsilon$  regulate neutrophil maturation,<sup>42</sup> Lef-1 regulates the expression of C/EBP $\alpha$  during granulopoiesis<sup>27</sup> and the expression of C/EBP $\epsilon$  peak in mature neutrophils and macrophages.<sup>29,42,43</sup> We therefore assessed whether C/EBP $\alpha$  and C/EBP $\epsilon$  were upregulated during DMSO-induced differentiation of HL-60 cells. C/EBP $\alpha$  started to accumulate after 1 day of treatment with DMSO, peaking after 3 ~ 5 days (Figure 6A). In contrast, DMSO had no effect on C/EBP $\epsilon$  accumulation after 1 day, but enhanced its accumulation after 3 days (Figure 6B), with enhancement of C/EBP $\epsilon$  expression occurring following upregulation of C/EBP $\alpha$ . Overlapping expression of C/EBP $\alpha$  and C/EBP $\epsilon$  was observed after 3 days of treatment with DMSO. These time lags in the expression of C/EBP $\alpha$  and C/EBP $\epsilon$  have been observed previously.<sup>29,42</sup>

Another critical regulator of granulopoiesis is granulocyte colony-stimulating factor (G-CSF), a cytokine that regulates the differentiation and proliferation of myeloid cells.<sup>44</sup> G-CSF receptor has binding sites for C/EBP $\alpha$  and PU.1, regulating several myeloid gene promoters.<sup>45</sup> Increased G-CSF receptor protein expression was observed after 1 day of treatment with DMSO, with G-CSF receptor expression increasing in a time-dependent manner (Figure 6C). In contrast, DMSO had little effect on PMCA levels in plasma membranes. To confirm the significance of G-CSF receptor in the differentiation of HL-60 cells, we investigated the effect of anti-G-CSF antibody on DMSO-induced differentiation of HL-60 cells, finding that treatment with anti-G-CSF antibody inhibited CD11b expression (Figure 6D).



**FIGURE 6** C/EBP $\alpha$ , C/EBP $\epsilon$ , and G-CSF receptor are upregulated in HL-60 cells by DMSO treatment. (A, B, C) Expression of C/EBPs and G-CSF receptor was enhanced in DHL-60 cells. HL-60 cells were cultured in RPMI medium with or without 1.3% DMSO for the indicated times. Nuclear fractions were prepared using Nuclear Extract Kits (Active Motif) (A, B). In separate experiments, plasma membrane fractions were prepared (C). Protein expression was analyzed by Western blotting with antibodies to C/EBP $\alpha$  (A), C/EBP $\epsilon$  (B), Lamin B1 (A, B), G-CSFR (C), and PMCA (C). Results of blotting are representative of four independent experiments. The ratios of protein expressions in DHL-60 relative to HL-60 cells at  $t = 0$  (right panels), expressed as the mean  $\pm$  SE of four independent experiments. \* $P < 0.05$ , + $P < 0.06$ . (D) Anti-G-CSF antibody attenuates the DMSO-induced differentiation of HL-60 cells. HL-60 cells were cultured in RPMI medium with 1.3% DMSO in the presence of either anti-G-CSF or normal IgG for 5 days, and the expression of CD11b was determined by flow cytometry. The ratios of CD11b expression (geometric mean) of anti-G-CSF IgG-treated cells relative to normal IgG-treated cells are shown as the mean  $\pm$  SE of three independent experiments. \* $P < 0.05$

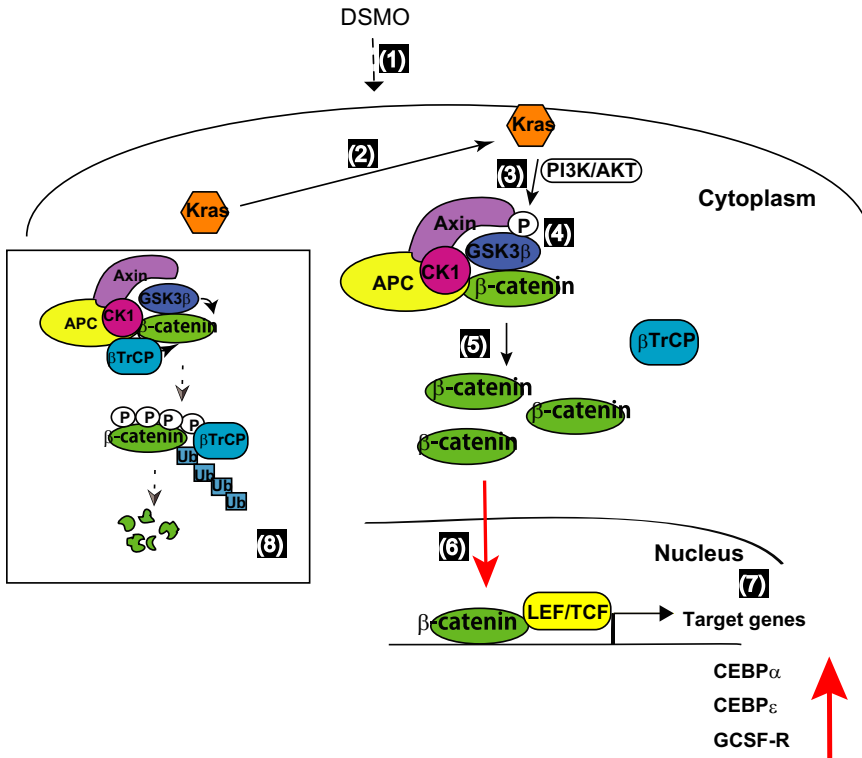
## 4 | DISCUSSION

The Ras family of small GTPases consists of three isoforms: Hras, Nras, and Kras. Activated Ras proteins mediate distinct

biological processes, including cell proliferation, differentiation, and apoptosis, by recruiting downstream effectors. In many human cancers, Kras is the most frequently mutated protein. The Wnt/ $\beta$ -catenin pathway has been implicated in many cellular signaling events.<sup>17-19,22</sup> This pathway is well controlled to maintain normal hematopoiesis,<sup>46</sup> with  $\beta$ -catenin playing pivotal roles in controlling the balance between cell proliferation and differentiation.<sup>20</sup> Moreover,  $\beta$ -catenin is a central player in the canonical cascade, with its stability regulated by a destruction complex. Inactivation of GSK3 $\beta$  by phosphorylation (Ser 9) triggers the release of  $\beta$ -catenin from the destruction complex.<sup>47</sup> Constitutive activation of Wnt signaling results in malignancy and blocks differentiation. Cross talk between oncogenic Kras and Wnt/ $\beta$ -catenin signaling has been reported in colorectal cancers, with its activity mediated through GSK3 $\beta$  or LRP6.<sup>48,49</sup> Kras<sup>Val12</sup> enhanced the level of  $\beta$ -catenin by inhibiting GSK3 $\beta$ , although this effect was not mediated by phosphorylation of GSK3 $\beta$  at Ser 9.<sup>49</sup> The expression of p21Ras proteins is upregulated in the differentiation of HL-60 cells,<sup>14</sup> but the involvement of Kras in myeloid differentiation is less clear. The current study focused on the properties of Kras other than its oncogenic activity. Although the functional significance of wild-type Kras protein has not yet been clearly established, wild-type *Kras* is regarded as a tumor suppressor, which is frequently lost during the progression of many cancers.<sup>11</sup> The finding that wild-type Kras inhibits oncogenic Kras-induced T-cell leukemia suggests that Kras can also act as a tumor suppressor,<sup>12</sup> and loss of wild-type Kras was found to promote the activation of all Ras isoforms in oncogenic Kras-induced leukemogenesis.<sup>13</sup> Similarly, our results demonstrate that the Kras signaling pathway acts as tumor suppressor during DMSO-induced differentiation of HL-60 cells.

Neutrophilic granulocytes have a short life, indicating that granulopoiesis should be tightly regulated. The C/EBPs are a family of transcription factors that are critical for normal cell differentiation, with C/EBPs being important regulators of cytokine expression in neutrophils.<sup>50</sup> Neutrophilic differentiation depends on C/EBP $\alpha$ , and Lef-1 regulates the expression of C/EBP $\alpha$  during granulopoiesis.<sup>27</sup> C/EBP $\alpha$  upregulates the G-CSF receptor promoter in myeloid cells,<sup>45,51</sup> whereas C/EBP $\epsilon$  is a critical regulator of terminal granulopoiesis.<sup>42</sup> C/EBP $\epsilon$  regulation is a rate-limiting step during G-CSF-regulated granulocyte differentiation.<sup>44</sup> Treatment of HL-60 cells with DMSO for 3 days resulted in the upregulation of both the C/EBP $\delta$  and C/EBP $\epsilon$  genes.<sup>30</sup>

Despite DMSO-induced differentiation of HL-60 cells being well-known, the mechanism by which DMSO triggers the differentiation of HL-60 cells remains unclear. In assessing this mechanism, we found, for the first time, that the Kras-PI3K/AKT-Wnt/ $\beta$ -catenin networks were novel key signaling elements in DMSO-induced HL-60 cell differentiation. Proposed pathways are schematically described in



**FIGURE 7** Novel Kras-Wnt/ $\beta$ -catenin signaling networks in the DMSO-induced differentiation of HL-60 cells. DMSO triggers Kras activation through the recruitment of Kras to the plasma membrane (1, 2). AKT phosphorylates GSK3 $\beta$  and inactivates GSK3 $\beta$  (3, 4). Accumulated unphosphorylated  $\beta$ -catenin in the cytoplasm translocates to the nucleus (5, 6), where it binds to Lef/Tcf and stimulates the transcription of target genes such as C/EBP $\alpha$ , C/EBP $\epsilon$ , and G-CSF receptor (7). In the absence of DMSO,  $\beta$ -catenin is phosphorylated by a destruction complex composed of the core proteins, including Axin, APC, CK1,  $\beta$ -catenin, GSK3 $\beta$ , and E3-ubiquitin ligase  $\beta$ -TrCP. Degradation of phosphorylated  $\beta$ -catenin follows its ubiquitination by proteasomes (8)

Figure 7. We found that wild-type Kras positively regulated the DMSO-induced differentiation of HL-60 cells and that there was cross talk between Kras and the Wnt/ $\beta$ -catenin network during differentiation. The expression of CD11b, a marker for granulocytic differentiation, was attenuated by either Kras knockdown or a Kras inhibitor, as well as by an AKT inhibitor and small-molecule inhibitors of  $\beta$ -catenin. In contrast, CD11b expression was enhanced by GSK3 $\beta$  inhibitor. Phosphorylation of GSK3 $\beta$  by AKT inactivated GSK3 $\beta$  (Figure 7, (3,4)) and triggered the stabilization of non-phosphorylated  $\beta$ -catenin (Figure 7, (5)), whereas  $\beta$ -catenin and Tcf4 accumulated in the nuclei of DHL-60 cells (Figure 7, (6)). Accumulation of  $\beta$ -catenin stimulated Lef/Tcf-sensitive transcription.  $\beta$ -Catenin inhibitors blocked CD11b expression, whereas elevated  $\beta$ -catenin positively regulated the DMSO-induced differentiation of HL-60 cells. In the absence of DMSO, phosphorylated  $\beta$ -catenin is degraded by ubiquitin-mediated proteolysis (Figure 7, (8)). Indeed,  $\beta$ -catenin was slightly expressed in undifferentiated HL-60 cells. Taken together, these findings indicate that  $\beta$ -catenin plays an important role in HL-60 cell differentiation.

This study also showed that PI3K/AKT, GSK3 $\beta$ , and  $\beta$ -catenin were downstream of Kras. GSK3 is a pivotal regulator of hematopoiesis.<sup>52,53</sup> Although GSK3 $\alpha$  deletion alone had no effect on hematopoiesis, deletion of GSK3 $\beta$  resulted in a pre-neoplastic state consistent with human myelodysplastic syndromes. Furthermore, the knockdown of both GSK3 $\alpha$  and GSK3 $\beta$  resulted in aggressive AML.<sup>54</sup> The GSK3 proteins have been implicated in many signaling pathways and

act as both tumor suppressors and tumor enhancers.<sup>33</sup> Thus, the GSK3s and  $\beta$ -catenin are important elements in DMSO-induced differentiation of HL-60 cells.

The transcription factors C/EBP $\alpha$  and C/EBP $\epsilon$  are also upregulated and involved in the granulopoiesis of HL-60 cells. C/EBP $\alpha$  expression, which is necessary to induce the granulocytic differentiation of bipotential cells, was enhanced soon after treatment with DMSO and was sustained until late differentiation. C/EBP $\epsilon$ , which acts downstream of C/EBP $\alpha$ , was upregulated following the elevation of G-CSF receptor in DHL-60 cells. C/EBP $\alpha$  has been shown to upregulate the expression of G-CSF receptor and C/EBP $\epsilon$ .<sup>45,51</sup> Similarly, the present study found an overlap between C/EBP $\alpha$  and C/EBP $\epsilon$  expression, with C/EBP $\alpha$  expressed first followed by C/EBP $\epsilon$ .<sup>29</sup> The importance of C/EBP $\alpha$  in the expression of G-CSF receptor is supported by results showing that G-CSF receptor mRNA is selectively absent in C/EBP $\alpha$  knockout mice.<sup>25</sup> The sustained expression of C/EBP $\alpha$  until the late differentiation of HL-60 cells induced bipotential myeloid precursors to become granulocytes, not monocytes. C/EBP $\alpha$  mRNA levels were reduced in HL-60 cells undergoing monocytic differentiation in response to treatment with 12-O-tetra-decanoylphorbol-13-acetate (TPA).<sup>26</sup>

The partial inhibition of CD11b expression by treatment with neutralizing anti-G-CSF antibody during DMSO-induced differentiation suggests that DMSO regulates the differentiation of HL-60 cells by several distinct pathways. Neutrophil development proceeds via both G-CSF-dependent



and G-CSF-independent pathways, as mice lacking both G-CSF and G-CSF receptor produce morphologically mature neutrophils, although at lower than normal levels.<sup>55</sup> Expression of other C/EBPs in these mice can compensate for the lack of a G-CSF receptor-mediated pathway. C/EBPs are required for granulopoiesis independent of the induction of G-CSF receptor.<sup>56</sup> One dispensable activity may be C/EBP $\alpha$  activation of the C/EBP $\epsilon$  gene,<sup>56</sup> with C/EBP $\alpha$  replaced by C/EBP $\beta$  under stress conditions.<sup>56,57</sup>

In summary, the present study showed that wild-type Kras regulates the differentiation of HL-60 cells via the Wnt/ $\beta$ -catenin signaling pathway. Accumulation of C/EBP $\alpha$  upregulates the expression of G-CSF receptor and stimulates mature granulopoiesis in HL-60 cells. Thus, upregulated C/EBPs are necessary for the granulation and maturation of neutrophilic lineage cells upon DMSO treatment. Kras and Wnt-related molecules are activated during the development of many tumor types, with oncogenic Kras frequently showing enhanced signaling through the Wnt pathway and mediating tumor development. The present study found that activation of Kras and the Wnt/ $\beta$ -catenin pathway triggered DMSO-induced differentiation of HL-60 cells. Canonical Wnt signaling is crucial for T-cell development and functions in a dose-dependent fashion.<sup>46</sup> Complexities of Wnt signaling in hematopoiesis result from Wnt dosage, the source of hematopoietic cells, and interactions with other signaling pathways.<sup>58</sup> Therefore, finding the optimal kinetics and dose regimes is crucial for prospective translational applications. Fine adjustment of  $\beta$ -catenin levels governs downstream signaling networks. During DMSO-induced differentiation of HL-60 cells,  $\beta$ -catenin levels are slightly upregulated by Kras signaling networks, not by Wnt protein, and these increases in  $\beta$ -catenin levels may govern downstream signaling events. Constitutively, high levels of  $\beta$ -catenin produced by Wnt may result in super proliferation and tumorigenesis. Kras may therefore modulate a fine adjustment of  $\beta$ -catenin levels during DMSO-induced differentiation of HL-60 cells. Indeed, lower fold activation of Lef/Tcf-sensitive transcription was observed during DMSO-induced differentiation of HL-60 cells.

Wild-type Kras coordinates the DMSO-induced differentiation of HL-60 cells through the Wnt canonical pathway. The present study showed the importance of  $\beta$ -catenin and GSK3 $\beta$  in this process. This finding, in which wild-type Kras-PI3K/AKT-Wnt networks behave in a tumor-suppressive manner during the differentiation of HL-60 cells, was a novel result.

## ACKNOWLEDGEMENTS

This research was supported in part by grants from Foundation of Strategic Research Projects in Private Universities (S1311011), MEXT KAKENHI grant number 18H00451 (to N.Y.), and AMED under grant number JP18gm0910006 (to K.I.). We thank Dr. Craig C. Malbon (State University of New

York at Stony Brook, Stony Brook, NY, USA) for plasmids for Super8xTOPFlash (M50) and Super8xFOPFlash (M51).

## CONFLICT OF INTEREST

The authors declare that they have no conflict of interest.

## AUTHORS CONTRIBUTIONS

NY designed the study. NY and YK performed the experiments and analyzed the data. NY and KI wrote the manuscript. YH, YT, KT, HO, and KI participated in coordination and helped the study. All authors reviewed and approved the manuscript.

## REFERENCES

1. Downward J. Targeting RAS signalling pathways in cancer therapy. *Nat. Rev. Cancer.* 2003;3:11-22.
2. Campbell PM, Der CJ. Oncogenic Ras and its role in tumor cell invasion and metastasis. *Semin. Cancer Biol.* 2004;14:105-114.
3. Neubauer A, Dodge RK, George SL, et al. Prognostic importance of mutations in the ras proto-oncogenes in de novo acute myeloid leukemia. *Blood.* 1994;83:1603-1611.
4. Johnson L, Greenbaum D, Cichowski K, et al. K-ras is an essential gene in the mouse with partial functional overlap with N-ras. *Genes Dev.* 1997;11:2468-2481.
5. Esteban LM, Vicario-Abejon C, Fernandez-Salguero P, et al. Targeted genomic disruption of H-ras and N-ras, individually or in combination, reveals the dispensability of both loci for mouse growth and development. *Mol. Cell. Biol.* 2001;21:1444-1452.
6. Padavano J, Henkhaus RS, Chen H, Skovan BA, Cui H, Ignatenko NA. Mutant K-RAS promotes invasion and metastasis in pancreatic cancer through GTPase signaling pathways. *Cancer Growth Metastasis.* 2015;8:95-113.
7. Sunaga N, Imai H, Shimizu K, et al. Oncogenic KRAS-induced interleukin-8 overexpression promotes cell growth and migration and contributes to aggressive phenotypes of non-small cell lung cancer. *Int. J. Cancer.* 2012;130:1733-1744.
8. Okudela K, Hayashi H, Ito T, et al. K-ras gene mutation enhances motility of immortalized airway cells and lung adenocarcinoma cells via Akt activation: possible contribution to non-invasive expansion of lung adenocarcinoma. *Am. J. Pathol.* 2004;164:91-100.
9. Damernsawad A, Kong G, Wen Z, et al. Kras is required for adult hematopoiesis. *Stem Cells.* 2016;34:1859-1871.
10. Chen Y, Zheng Y, You X, et al. Kras is critical for B cell lymphopoiesis. *J. Immunol.* 2016;196:1678-1685.
11. Zhang Z, Wang Y, Vikis HG, et al. Wildtype Kras2 can inhibit lung carcinogenesis in mice. *Nat. Genet.* 2001;29:25-33.
12. Staffas A, Karlsson C, Persson M, Palmqvist L, Bergo MO. Wild-type KRAS inhibits oncogenic KRAS-induced T-ALL in mice. *Leukemia.* 2015;29:1032-1040.
13. Kong G, Chang YI, Damernsawad A, et al. Loss of wild-type Kras promotes activation of all Ras isoforms in oncogenic Kras-induced leukemogenesis. *Leukemia.* 2016;30:1542-1551.
14. Kuliczowski K, Darley RL, Jacobs A, Padua RA, Hoy TG. Upregulation of p21 RAS levels in HL-60 cells during

- differentiation induction with DMSO, all-trans-retinoic acid and TPA. *Leuk. Res.* 1995;19:291-296.
15. Collins SJ. The HL-60 promyelocytic leukemia cell line: proliferation, differentiation, and cellular oncogene expression. *Blood.* 1987;70:1233-1244.
  16. Collins SJ, Ruscetti FW, Gallagher RE, Gallo RC. Terminal differentiation of human promyelocytic leukemia cells induced by dimethyl sulfoxide and other polar compounds. *Proc. Natl Acad. Sci. U. S. A.* 1978;75:2458-2462.
  17. Wang J, Wynshaw-Boris A. The canonical Wnt pathway in early mammalian embryogenesis and stem cell maintenance/differentiation. *Curr. Opin. Genet. Dev.* 2004;14:533-539.
  18. Clevers H. Wnt/beta-catenin signaling in development and disease. *Cell.* 2006;127:469-480.
  19. Chien AJ, Conrad WH, Moon RT. A Wnt survival guide: from flies to human disease. *J. Invest. Dermatol.* 2009;129:1614-1627.
  20. Gandillet A, Park S, Lassailly F, et al. Heterogeneous sensitivity of human acute myeloid leukemia to beta-catenin down-modulation. *Leukemia.* 2011;25:770-780.
  21. Nusse R, Clevers H. Wnt/beta-catenin signaling, disease, and emerging therapeutic modalities. *Cell.* 2017;169:985-999.
  22. Kikuchi A, Kishida S, Yamamoto H. Regulation of Wnt signaling by protein-protein interaction and post-translational modifications. *Exp. Mol. Med.* 2006;38:1-10.
  23. Gammons M, Bienz M. Multiprotein complexes governing Wnt signal transduction. *Curr. Opin. Cell Biol.* 2018;51:42-49.
  24. Simon M, Grandage VL, Linch DC, Khwaja A. Constitutive activation of the Wnt/beta-catenin signalling pathway in acute myeloid leukaemia. *Oncogene.* 2005;24:2410-2420.
  25. Zhang DE, Zhang P, Wang ND, Hetherington CJ, Darlington GJ, Tenen DG. Absence of granulocyte colony-stimulating factor signaling and neutrophil development in CCAAT enhancer binding protein alpha-deficient mice. *Proc. Natl Acad. Sci. U. S. A.* 1997;94:569-574.
  26. Radomska HS, Huettner CS, Zhang P, Cheng T, Scadden DT, Tenen DG. CCAAT/enhancer binding protein alpha is a regulatory switch sufficient for induction of granulocytic development from bipotential myeloid progenitors. *Mol. Cell. Biol.* 1998;18:4301-4314.
  27. Skokowa J, Cario G, Uenal M, et al. LEF-1 is crucial for neutrophil granulocytogenesis and its expression is severely reduced in congenital neutropenia. *Nat. Med.* 2006;12:1191-1197.
  28. Morosetti R, Park DJ, Chumakov AM, et al. A novel, myeloid transcription factor, C/EBP epsilon, is upregulated during granulocytic, but not monocytic, differentiation. *Blood.* 1997;90:2591-2600.
  29. Yamanaka R, Barlow C, Lekstrom-Himes J, et al. Impaired granulopoiesis, myelodysplasia, and early lethality in CCAAT/enhancer binding protein epsilon-deficient mice. *Proc. Natl Acad. Sci. U. S. A.* 1997;94:13187-13192.
  30. Mollinedo F, Lopez-Perez R, Gajate C. Differential gene expression patterns coupled to commitment and acquisition of phenotypic hallmarks during neutrophil differentiation of human leukaemia HL-60 cells. *Gene.* 2008;419:16-26.
  31. Lee Y, Pincus PA, Hyeon C. Effects of dimethyl sulfoxide on surface water near phospholipid bilayers. *Biophys J.* 2016;111:2481-2491.
  32. Cadigan KM, Liu YI. Wnt signaling: complexity at the surface. *J. Cell Sci.* 2006;119:395-402.
  33. McCubrey JA, Steelman LS, Bertrand FE, et al. GSK-3 as potential target for therapeutic intervention in cancer. *Oncotarget.* 2014;5:2881-2911.
  34. Ying Q-L, Wray J, Nichols J, et al. The ground state of embryonic stem cell self-renewal. *Nature.* 2008;453:519.
  35. Liu L, Zhu S, Gong Z, Low BC. K-ras/PI3K-Akt signaling is essential for zebrafish hematopoiesis and angiogenesis. *PLoS ONE.* 2008;3:e2850.
  36. Cross DA, Alessi DR, Cohen P, Andjelkovich M, Hemmings BA. Inhibition of glycogen synthase kinase-3 by insulin mediated by protein kinase B. *Nature.* 1995;378:785-789.
  37. Castellano E, Downward J. RAS interaction with PI3K: more than just another effector pathway. *Genes Cancer.* 2011;2:261-274.
  38. Yokoyama N, Yin D, Malbon CC. Abundance, complexation, and trafficking of Wnt/beta-catenin signaling elements in response to Wnt3a. *J. Mol. Signal.* 2007;2:11.
  39. Chung EJ, Hwang SG, Nguyen P, et al. Regulation of leukemic cell adhesion, proliferation, and survival by beta-catenin. *Blood.* 2002;100:982-990.
  40. Mogni L, Brussolo S, Ceccon M, Gambacorti-Passerini C. Synergistic effects of combined Wnt/KRAS inhibition in colorectal cancer cells. *PLoS ONE.* 2012;7:e51449.
  41. Ramji DP, Foka P. CCAAT/enhancer-binding proteins: structure, function and regulation. *Biochem. J.* 2002;365:561-575.
  42. Lekstrom-Himes JA. The role of C/EBP(epsilon) in the terminal stages of granulocyte differentiation. *Stem Cells.* 2001;19:125-133.
  43. Yamanaka R, Kim GD, Radomska HS, et al. CCAAT/enhancer binding protein epsilon is preferentially up-regulated during granulocytic differentiation and its functional versatility is determined by alternative use of promoters and differential splicing. *Proc. Natl Acad. Sci. U. S. A.* 1997;94:6462-6467.
  44. Nakajima H, Ihle JN. Granulocyte colony-stimulating factor regulates myeloid differentiation through CCAAT/enhancer-binding protein epsilon. *Blood.* 2001;98:897-905.
  45. Smith LT, Hohaus S, Gonzalez DA, Dziennis SE, Tenen DG. PU.1 (Spi-1) and C/EBP alpha regulate the granulocyte colony-stimulating factor receptor promoter in myeloid cells. *Blood.* 1996;88:1234-1247.
  46. Luis TC, Naber BA, Roozen PP, et al. Canonical wnt signaling regulates hematopoiesis in a dosage-dependent fashion. *Cell Stem Cell.* 2011;9:345-356.
  47. Gammons M, Bienz M. Multiprotein complexes governing Wnt signal transduction. *Curr Opin Cell Biol.* 2017;51:42-49.
  48. Lemieux E, Cagnol S, Beaudry K, Carrier J, Rivard N. Oncogenic KRAS signalling promotes the Wnt/beta-catenin pathway through LRP6 in colorectal cancer. *Oncogene.* 2015;34:4914-4927.
  49. Li J, Mizukami Y, Zhang X, Jo WS, Chung DC. Oncogenic K-ras stimulates Wnt signaling in colon cancer through inhibition of GSK-3beta. *Gastroenterology.* 2005;128:1907-1918.
  50. Cloutier A, Guindi C, Larivee P, Dubois CM, Amrani A, McDonald PP. Inflammatory cytokine production by human neutrophils involves C/EBP transcription factors. *J. Immunol.* 2009;182:563-571.
  51. Zhang P, Iwama A, Datta MW, Darlington GJ, Link DC, Tenen DG. Upregulation of interleukin 6 and granulocyte colony-stimulating factor receptors by transcription factor CCAAT enhancer binding protein alpha (C/EBP alpha) is critical for granulopoiesis. *J. Exp. Med.* 1998;188:1173-1184.
  52. Wang Y, Krivtsov AV, Sinha AU, et al. The Wnt/beta-catenin pathway is required for the development of leukemia stem cells in AML. *Science.* 2010;327:1650-1653.



53. Huang J, Zhang Y, Bersenev A, et al. Pivotal role for glycogen synthase kinase-3 in hematopoietic stem cell homeostasis in mice. *J. Clin. Invest.* 2009;119:3519-3529.
54. Guezguez B, Almakadi M, Benoit YD, et al. GSK3 deficiencies in hematopoietic stem cells initiate pre-neoplastic state that is predictive of clinical outcomes of human acute leukemia. *Cancer Cell.* 2016;29:61-74.
55. Maun NA, Gaines P, Khanna-Gupta A, et al. G-CSF signaling can differentiate promyelocytes expressing a defective retinoic acid receptor: evidence for divergent pathways regulating neutrophil differentiation. *Blood.* 2004;103:1693-1701.
56. Wang QF, Friedman AD. CCAAT/enhancer-binding proteins are required for granulopoiesis independent of their induction of the granulocyte colony-stimulating factor receptor. *Blood.* 2002;99:2776-2785.
57. Hirai H, Yokota A, Tamura A, Sato A, Maekawa T. Non-steady-state hematopoiesis regulated by the C/EBPbeta transcription factor. *Cancer Sci.* 2015;106:797-802.
58. Staal FJ, Chhatta A, Mikkers H. Caught in a Wnt storm: Complexities of Wnt signaling in hematopoiesis. *Exp. Hematol.* 2016;44:451-457.

## SUPPORTING INFORMATION

Additional supporting information may be found online in the Supporting Information section at the end of the article.

**How to cite this article:** Yokoyama N, Kim Y-J, Hirabayashi Y, et al. Kras promotes myeloid differentiation through Wnt/ $\beta$ -catenin signaling. *FASEB BioAdvances.* 2019;1:435–449. <https://doi.org/10.1096/fba.2019-00004>