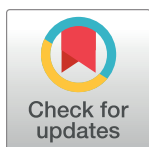


CORRECTION

Correction: Seasonal alternation of the ontogenetic development of the moon jellyfish *Aurelia coerulea* in Maizuru Bay, Japan

The *PLOS ONE* Staff

Scale bars are missing in [Fig 4A–4F](#). The publisher apologizes for the error. Please view the correct [Fig 4](#) here.



OPEN ACCESS

Citation: The *PLOS ONE* Staff (2020) Correction: Seasonal alternation of the ontogenetic development of the moon jellyfish *Aurelia coerulea* in Maizuru Bay, Japan. *PLoS ONE* 15(2): e0228841. <https://doi.org/10.1371/journal.pone.0228841>

Published: February 3, 2020

Copyright: © 2020 The PLOS ONE Staff. This is an open access article distributed under the terms of the [Creative Commons Attribution License](#), which permits unrestricted use, distribution, and reproduction in any medium, provided the original author and source are credited.

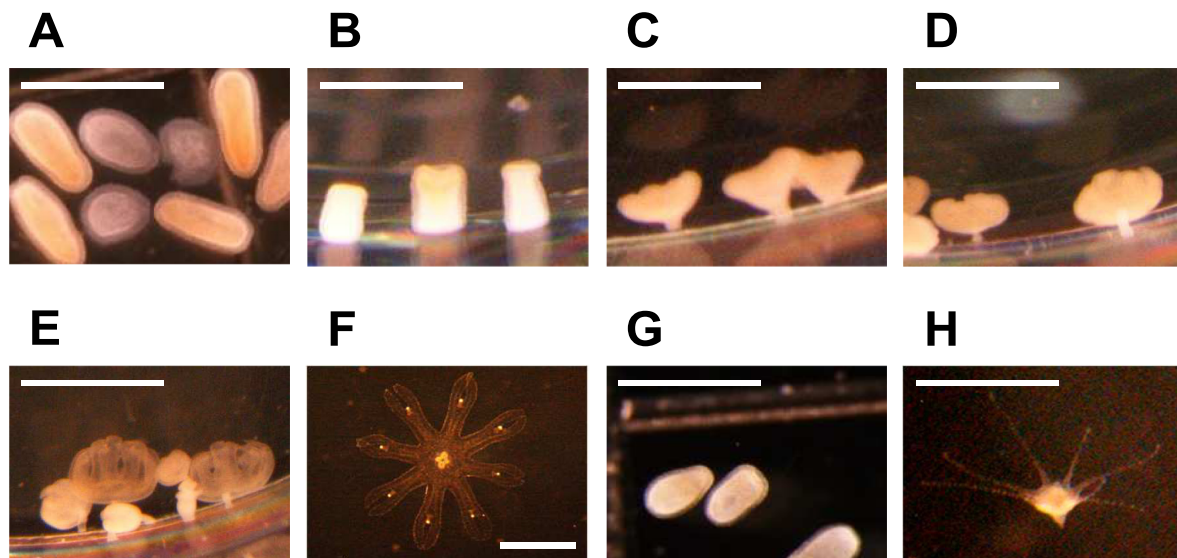


Fig 4. Two types of ontogenetic development of planulae in Maizuru Bay. Transformation process of the direct-development type from planula (A) to ephyra (F). The images B–F were taken 2, 6, 10, 12, and 15 days after the onset of incubation at 10°C, respectively. Transformation process of the metagenetic type from planula (G) to polyp (H). The image H was taken 7 days after the onset of incubation at 28°C. In B–E and H, *A. coerulea* attached to the wall of 24-well plates located in the lower part of the pictures. The scale bars indicate 1 mm.

<https://doi.org/10.1371/journal.pone.0228841.g001>

Reference

1. Suzuki KS, Suzuki KW, Kumakura E, Sato K, Oe Y, Sato T, et al. (2019) Seasonal alternation of the ontogenetic development of the moon jellyfish *Aurelia coerulea* in Maizuru Bay, Japan. PLoS ONE 14 (11): e0225513. <https://doi.org/10.1371/journal.pone.0225513> PMID: 31751435