




ORIGINAL RESEARCH

Noteworthy prognostic value of phospholipase C delta genes in early stage pancreatic ductal adenocarcinoma patients after pancreaticoduodenectomy and potential molecular mechanisms

Xin Zhou¹  | Xiwen Liao¹  | Xiangkun Wang¹ | Ketuan Huang¹ | Chengkun Yang¹ | Tingdong Yu¹ | Chuangye Han¹ | Guangzhi Zhu¹ | Hao Su¹ | Quanfa Han¹ | Zijun Chen¹ | Jianlv Huang^{1,2} | Yizhen Gong³ | Guotian Ruan³ | Xiping Ye¹ | Tao Peng¹ 

¹Department of Hepatobiliary Surgery, The First Affiliated Hospital of Guangxi Medical University, Nanning, Guangxi Zhuang Autonomous Region, People's Republic of China

²Department of Hepatobiliary Surgery, The Third Affiliated Hospital of Guangxi Medical University, Nanning, Guangxi Zhuang Autonomous Region, People's Republic of China

³Department of Colorectal and Anal Surgery, The First Affiliated Hospital of Guangxi Medical University, Nanning, Guangxi Zhuang Autonomous Region, People's Republic of China

Correspondence

Prof. Tao Peng, Department of Hepatobiliary Surgery, The First Affiliated Hospital of Guangxi Medical University, Shuang Yong Rd. 6#, Nanning 530021, Guangxi Zhuang Autonomous Region, People's Republic of China.
Email: pengtaogmu@163.com

Abstract

The purpose of this investigation was to explore the prognostic value of phospholipase C delta (PLCD) genes in early stage pancreatic ductal adenocarcinoma (PDAC) and its potential molecular mechanisms. The prognostic value of PLCD genes in early stage PDAC was assessed using the Kaplan-Meier method and multivariate Cox proportional hazards regression model. Genome-wide correlation analysis was performed on PLCD3 to identify the highly correlated genes in the transcriptome. Then, PLCD3 and these correlated genes together underwent a bioinformatics analysis to elucidate the potential molecular biological functions of PLCD3 in PDAC. PLCD1 and PLCD3 are significantly overexpressed in PDAC. In PDAC patients, PLCD3 is

Funding information

This work was supported in part by the National Natural Science Foundation of China (No.: 81560535, 81802874, 81072321, 30760243, 30460143 and 30560133), Natural Science Foundation of Guangxi Province of China (Grant No. 2017JJB140189y), 2009 Program for New Century Excellent Talents in University (NCET), Guangxi Natural Sciences Foundation (No.: GuiKeGong 1104003A-7), and Guangxi Health Ministry Medicine Grant (Key-Scientific Research-Grant Z201018). The present study is also partly supported by Scientific Research Fund of the Health and Family Planning Commission of Guangxi Zhuang Autonomous Region (Z2016318), Key laboratory of High-Incidence-Tumor Prevention & Treatment (Guangxi Medical University), Ministry of Education (GKE2018-01), The Basic Ability Improvement Project for Middle-aged and Young Teachers in Colleges and Universities in Guangxi (2018KY0110), Innovation Project of Guangxi Graduate Education (JGY2018037), and 2018 Innovation Project of Guangxi Graduate Education (YCBZ2018036). As well as, the present study is also partly supported by Research Institute of Innovative Think-tank in Guangxi Medical University (The gene-environment interaction in hepatocarcinogenesis in Guangxi HCCs and its translational applications in the HCC prevention). We also acknowledge the support by the National Key Clinical Specialty Programs (General Surgery & Oncology) and the Key Laboratory of Early Prevention & Treatment for Regional High-Incidence-Tumor (Guangxi Medical University), Ministry of Education, China.

This is an open access article under the terms of the Creative Commons Attribution License, which permits use, distribution and reproduction in any medium, provided the original work is properly cited.

© 2019 The Authors. *Cancer Medicine* published by John Wiley & Sons Ltd.

overexpressed in certain groups of people with a history of alcoholism ($P = .032$). High expression of *PLCD3* was found to be associated with lower overall survival (OS) of patients with early stage PDAC ($P = .020$; adjusted $P = .016$). A combination of *PLCD3* and clinical variables was able to better predict the outcome of patients with early stage PDAC. These clinical variables are histological grade ($P = .001$; adjusted $P = .001$), targeted molecular therapy ($P < .001$; adjusted $P < .001$), radiation therapy ($P = .002$; adjusted $P = .039$), and residual resection ($P = .001$; adjusted $P = .002$). The bioinformatics analysis revealed that *PLCD3* is associated with angiogenesis, intracellular signal transduction, and regulation of cell proliferation. In conclusion, *PLCD3* may be a potential prognostic biomarker for early stage PDAC.

KEYWORDS

clinical significance, early stage pancreatic ductal adenocarcinoma, molecular mechanism, pancreaticoduodenectomy, phospholipase C delta

1 | INTRODUCTION

Pancreatic ductal adenocarcinoma (PDAC) is the sixth leading cause of all cancer-related deaths worldwide, and is predicted to become the second leading cause by 2030.^{1,2} PDAC is widely known for its high malignancy and mortality, with almost equal morbidity.³ Although the prevalence of PDAC reported in 2018 was only 2.5% of all cancers, mortality due to PDAC was about 4.5% of all cancers.³ In America, PDAC-related deaths rank fourth among all cancers in both sexes, and the incidence of PDAC has been rising steadily from 42 000 in 2009 to 57 000 in 2019.^{1,4,5} Since no remarkably reliable biomarkers have been identified for the detection of early stage PDAC, the low sensitivity of currently used serum tumor markers, such as carbohydrate antigen and carcinoembryonic antigen, has resulted in patients with PDAC being diagnosed predominantly at the advanced stage.⁶ Although many clinical treatment and basic research studies have been conducted during recent years, the 5-year survival of patients with PDAC is merely 9% for all stages and 3% for patients with distant metastasis, which is the lowest survival rate among all cancers.¹ To date, surgery is still the only method of treatment that can have a significantly positive impact on the survival of early stage PDAC patients.⁶ Therefore, exploring and identifying new therapeutic targets are vital for improving the outcome of PDAC patients.

Phospholipases, which includes phospholipase C (PLC), phospholipase D (PLD), and phospholipase A (PLA), play important roles in intracellular and intercellular signaling.⁷ Phospholipases can be stimulated by various hormones that act on receptor tyrosine kinases or G protein-coupled receptors.⁸⁻¹⁰ Among the phospholipases, PLC is most widely known for its role in cell growth promotion in signaling

channels.¹¹ The most important and best-known cellular signaling transduction biochemical reaction mediated by PLC is the splitting of phosphatidylinositol 4,5-diphosphate (PIP₂) into diacylglycerol (DAG) and inositol 1,4,5-trisphosphate (IP₃), which triggers the release of Ca²⁺.¹²⁻¹⁶ Both DAG and Ca²⁺ are capable of activating protein kinase C (PKC).¹⁷⁻²¹ Ca²⁺ can in turn stimulate PLC and amplify the calcium signal.²² In addition, IP₃ is known to mediate the activation of several other protein kinases to promote/inhibit transcription in different cellular signal transduction pathways.^{22,23} The lipid mediators produced by PLC regulate a variety of cellular processes that promote tumor development, including proliferation, migration, invasion, and vesicle trafficking.^{11,24} PLC is the key downstream component of the EGF receptor (EGFR) that is found to be elevated in several cancers, such as breast cancer,^{25,26} pancreatic cancer,²⁷ and ovarian cancer.^{28,29} The phospholipase C delta (PLCD) subfamily within the PLC family has three family members, *PLCD1*, *PLCD3*, and *PLCD4*.^{30,31} *PLCD* genes are generally known to be tumor suppressors. *PLCD1* has been identified as a tumor-inhibiting gene at 3p22, an area that is often mutational in esophageal cancer.³² In addition, decreased *PLCD1* expression is associated with a worse outcome in leukemia.³² It has also been reported that the proliferation, invasion, and migration of pancreatic cancer cells can be inhibited by *PLCD1*.³³ TSPAN1 can promote PDAC cell migration and invasion by regulating the *MMP2* gene via *PLCG*.³⁴ Additionally, *PLCG1* has been identified as a hub gene in PDAC through bioinformatics analysis.³⁵ *PLCD3* is involved in the proliferation, migration, and invasion of nasopharyngeal carcinoma cells.³⁶ Knockdown of *PLCD3* in colon cancer impairs the development of microvilli architecture, which promotes the genesis of colon cancer.³⁷ However, the effect of the *PLCD* subfamily

on the survival of early stage PDAC patients is still unknown. The aim of this investigation was to explore the association between *PLCD* genes and survival of PDAC patients.

2 | MATERIALS AND METHODS

2.1 | Data mining and processing

RNA-Sequencing data of 182 patients with pancreatic cancer were extracted from the TCGA database (<https://cancergenome.nih.gov/>, accessed on 20 April 2017). In order to decrease the spread of the raw data and convert it into an expression profile, the raw data were processed using the *DESeq* package of R software (version 3.5.2; www-project.org). Corresponding clinical and survival data were acquired from the University of California Santa Cruz Xena Platform (UCSC Xena <http://xena.ucsc.edu/>, accessed at April 20, 2017). In order to better suit the purpose of the experiment and eliminate the influence of confounding factors, the patients were selected based on the following inclusion criteria: (a) histological validation; (b) early stage PDAC (pathological stage I or II, according to the 7th American Joint Committee on Cancer (AJCC)); (c) availability of complete survival data; and (d) having undergone pancreaticoduodenectomy. The inclusion criteria were applied to our previous research as well (citation). Patients with incomplete survival data, advanced-stage PDAC, or non-PDAC cancer patients were eliminated. The relationship between clinical variables and the outcome of the 112 early stage PDAC patients was assessed using Kaplan-Meier analysis along with a log-rank test.

2.2 | Differential expression analysis of *PLCD* genes

Differential expression of *PLCD* genes between pancreatic adenocarcinoma (PAAD) tissue and normal pancreatic tissue was acquired from GEPIA (<http://gepia.cancer-pku.cn/>).³⁸ Since PDAC accounts for 90% of PAAD, we assumed that the differentially expressed genes represent the expression state of *PLCD* in PDAC. In addition, we further explored the differential expression of *PLCD* genes in these 112 early stage PDAC patients, based on age, gender, history of alcohol consumption, tumor size, and histological classification, using the *t* test in SPSS 22.0 software. Due to the small sample size of patients at pathological stage I and patients with a history of chronic pancreatitis, the differential expression of *PLCD* genes in terms of pathological stage and chronic pancreatitis history was not analyzed among the 112 patients with early stage PDAC.

2.3 | Survival analysis of the *PLCD* genes

Patients were divided into low expression and high expression groups, based on the median value of *PLCD*

gene expression. Kaplan-Meier analysis with log-rank test was used to estimate the association between the expression levels of *PLCD* genes and overall survival (OS) of the patients with early stage PDAC. The OS-associated clinical variables included histological grade, targeted molecular therapy, radiation therapy, and residual resection. A multivariate Cox proportional hazards regression model was used to adjust the survival analysis result of the *PLCD* genes.

A nomogram was made using the *rms* package of R software (version 3.5.2; www-project.org),³⁹ and was used to explore the contribution of *PLCD* genes and several clinical variables to the OS of early stage PDAC patients. The length of the corresponding line segments represents the contribution of each variable.

After the single gene survival analysis, a combined effect survival analysis was conducted on the OS-related gene (*PLCD3*) using OS-related clinical variables, which included histological grade, targeted molecular therapy, radiation therapy, and residual resection. The combined effect of the OS-related clinical variables and *PLCD3* was analyzed using Kaplan-Meier analysis with log-rank test and the multivariate Cox proportional hazards regression model. The multivariate Cox proportional hazards regression model was used to exclude heterogeneity of the clinical variables. Details of the grouping method are shown in Table 2.

In addition, the prognostic value of *PLCD3* among patients with specific clinical characteristics was analyzed using a stratified survival analysis. We stratified patients based on their clinical characteristics and then analyzed the prognostic significance of *PLCD* isoforms in each group. Details of the stratified method are shown in Table 3.

2.4 | Prognostic signature construction

Based on the expression of *PLCD3* and the regression coefficient derived from the result of the multivariate Cox proportional hazards regression model, a risk score was calculated for each patient, in order to construct a prognostic signature. The formula for the risk score was as follows: risk score = (expression value of gene A) $\times \beta_A$ + (expression value of gene B) $\times \beta_B$ + ... (expression value of gene n) $\times \beta_n$; β meant the regression coefficient.^{40,41} In addition, time-dependent receiver operating characteristic curve (ROC) curves were generated using the *survivalROC* package of R software to test the predictive performance of the prognostic signature.

2.5 | Genome-wide correlation analysis and bioinformatic analysis of *PLCD* genes

A genome-wide correlation analysis was performed to identify genes with a strong correlation with OS-related

(adjust $P < .05$) *PLCD3*. The first 1000 among the 31 776 genes based on correlation coefficient absolute value ranking were considered to be strongly correlated with *PLCD3*. *PLCD3* and the correlated genes were analyzed in DAVID (<https://david.ncifcrf.gov/>, accessed on 25 April 2019) for GO (gene ontology) terms and KEGG (Kyoto Encyclopedia of Genes and Genomes) pathway analysis.⁴² The gene-gene relationship and protein-protein interactions were retrieved using STRING (<https://string-db.org/>)⁴³⁻⁴⁵ and GeneMANIA (<http://genemania.org/>), respectively,^{46,47} while the results were visualized in Cytoscape (version 3.6.1).

2.6 | Statistical analysis

All statistical analyses were performed using SPSS 22.0 and R 3.5.2 software. Hazard ratios (HRs) with 95% confidence intervals were used to describe the relative risk between the high and low PLCD expression groups. Kaplan-Meier analysis with log-rank test and the Cox proportional hazard regression model were used for the univariate and multivariable survival analysis. A P value of $<.05$ was considered to indicate statistical significance. Normalized P values of $<.05$ and a false discovery rate (FDR) of $<.25$ were considered to indicate statistical significance in the GSEA analysis.

3 | RESULTS

3.1 | Data mining and processing

The complete expression matrix output obtained using the R platform, after standardization using the DESeq package, contained 31 777 gene expression values from 182 samples. Based on our objective and corresponding inclusion criteria, 70 samples without pathological confirmation of PDAC neoplasia or with incomplete survival data were removed. Data of the remaining 112 patients with pathologically confirmed PDAC and complete survival data were used for further analysis.

Among the clinical variables analyzed, targeted molecular therapy, radiation therapy, residual resection, and neoplasm histological grade were all found to be associated with OS in all 112 PDAC patients (Table S1).

3.2 | Differential expression analysis of PLCD genes

A boxplot retrieved from GEPIA indicated that *PLCD1* and *PLCD3* are significantly overexpressed in PAAD tissue, compared with normal tissue (Figure 1). *PLCD3* was also found to be overexpressed in patients with a history of alcoholism ($P = .032$; Figure 2). No significant difference was

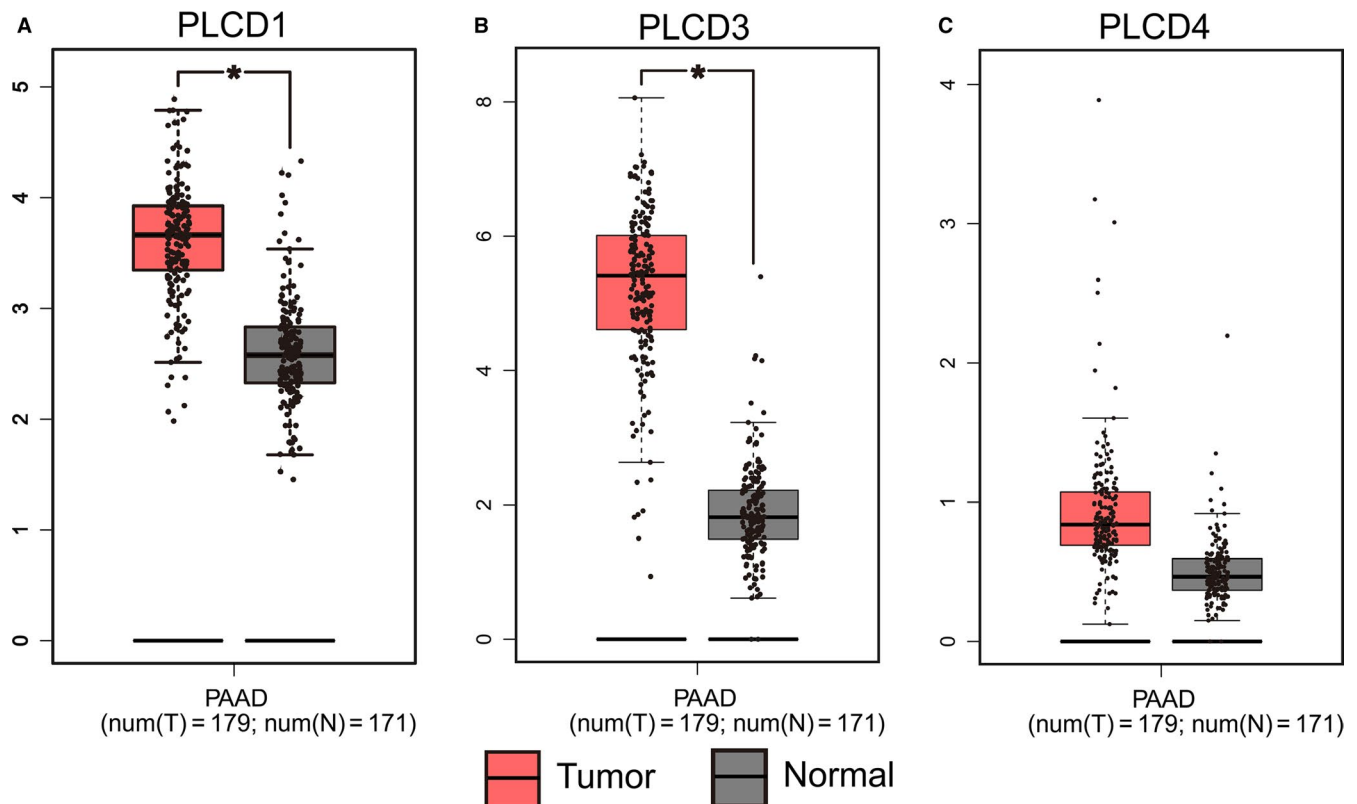


FIGURE 1 Expression of *PLCD1*, *PLCD3*, and *PLCD4* between pancreatic adenocarcinoma and normal pancreatic tissue from TCGA database. Expression of *PLCD1* (A), *PLCD3* (B), and *PLCD4* (C)

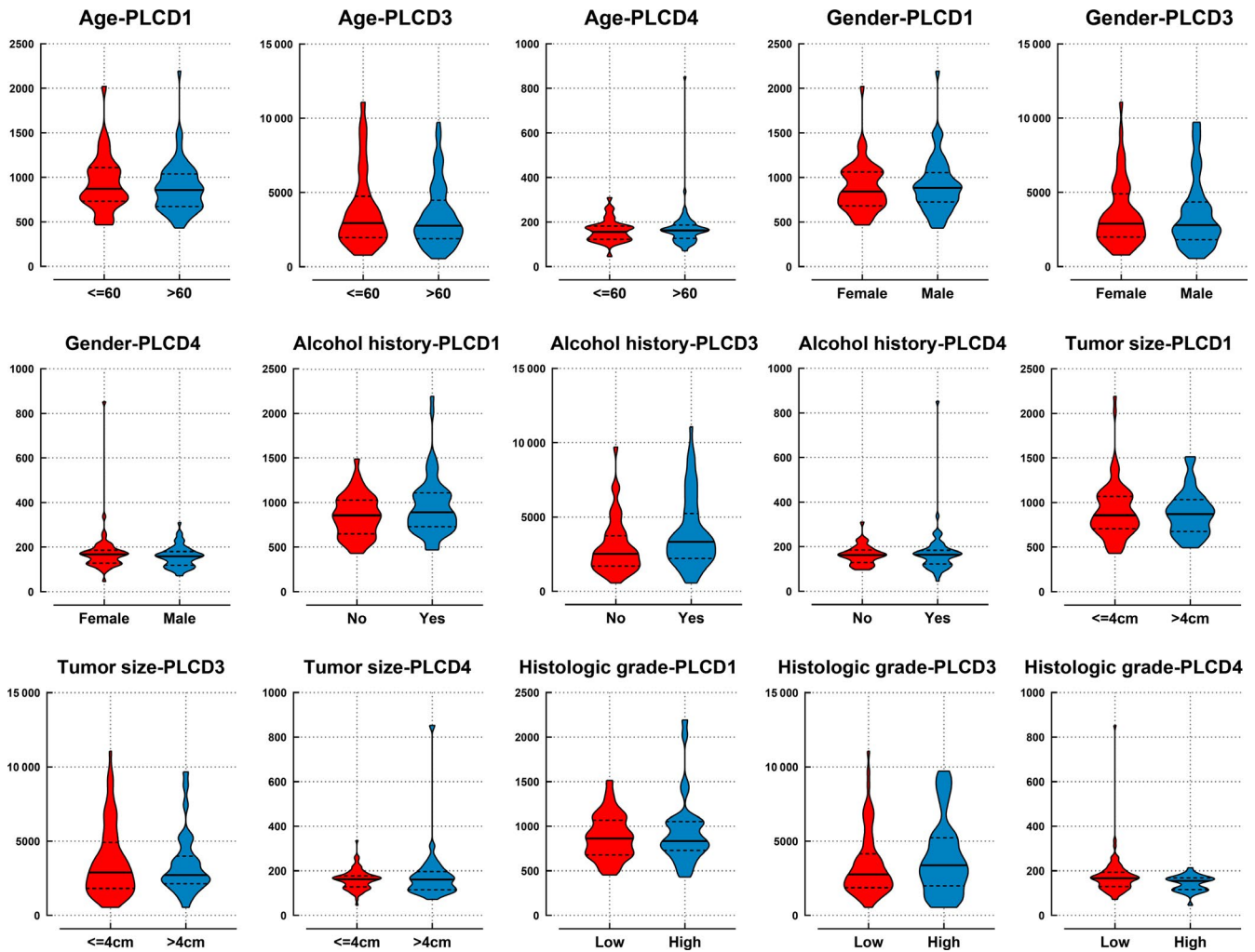


FIGURE 2 Expression of *PLCD1*, *PLCD3*, and *PLCD4* in early stage pancreatic ductal adenocarcinoma in terms of clinical variables

found between *PLCD* gene expression and the other groups in terms of clinical variables.

3.3 | Survival analysis of the *PLCD* genes

The results of the univariate survival analysis using the Kaplan-Meier method with the log-rank test are shown in Table 1 and Figure 3. After adjusting for OS-related clinical variables, which included targeted molecular therapy, radiation therapy, residual resection, and neoplasm histological grade, the results of Cox proportional hazard regression elucidated that *PLCD3* is significantly related to overall survival for the 112 PDAC patients ($P = .020$; adjusted $P = .016$) (Table 1, Figure 3B). High expression of *PLCD3* was found to be associated with shorter overall survival among the PDAC patients (adjusted HR = 1.988, 95% CI = 1.134-3.486) (Table 1, Figure 3B).

The nomogram indicated that high *PLCD3* distinctly contributes to a worse prognosis for PDAC patients (Figure 3D).

The combined effect survival analysis of *PLCD3* and clinical variables demonstrates that the survival time of patients

with high *PLCD3* expression and a high histological grade (G3+G4) is significantly shorter than that of patients with low *PLCD3* expression and a low histological grade (G1+G2) ($P = .001$; adjusted $P = .001$; adjusted HR = 3.578, 95% CI 1.660-7.712) (Table 2, Figure 4). The survival time of patients with high *PLCD3* expression and no targeted molecular therapy was found to be significantly shorter than patients with low *PLCD3* expression and targeted molecular therapy ($P < .001$; adjusted $P < .001$; adjusted HR = 12.484, 95% CI 5.089-30.621) (Table 2; Figure 4). Patients with high *PLCD3* expression and no radiation therapy were found to have significantly shorter survival time than patients with low *PLCD3* expression and radiation therapy, and the difference was statistically significant ($P = .002$; adjusted $P = .039$; adjusted HR = 2.778, 95% CI 1.052-7.332) (Table 2; Figure 4), while high *PLCD3* expression and nonresidual resection resulted in shorter survival time than low *PLCD3* expression and residual resection ($P = .001$; adjusted $P = .002$; adjusted HR = 3.757; 95% CI 1.630-8.660) (Table 2; Figure 4).

In the stratified survival analysis, *PLCD3* expression was found to be associated with the OS of PDAC patients who

TABLE 1 Survival analysis of PLCD genes for OS of patients in early stage PDAC

Gene expression	Patients (n = 112)	OS					
		No. of event	MST (days)	Crude HR (95% CI)	Crude Log-rank P	Adjusted HR (95% CI)	Adjusted P ^a
PLCD1							
Low	56	38	485	1		1	
High	56	31	607	0.799 (0.495-1.290)	.359	0.901 (0.527-1.540)	.703
PLCD3							
Low	56	30	607	1		1	
High	56	39	470	1.741 (1.097-2.935)	.020	1.988 (1.134-3.486)	.016
PLCD4							
Low	56	37	498	1		1	
High	56	32	518	0.806 (0.498-1.306)	.382	0.745 (0.432-1.285)	.290

Abbreviations: CI, confidence interval; HR, hazard ratio; MST, median survival time; OS, overall survival; PDAC, pancreatic ductal adenocarcinoma; PLCD, phospholipase C delta.

^aAdjusted for clinical variables neoplasm histologic grade, targeted molecular therapy, radiation therapy, and residual resection.

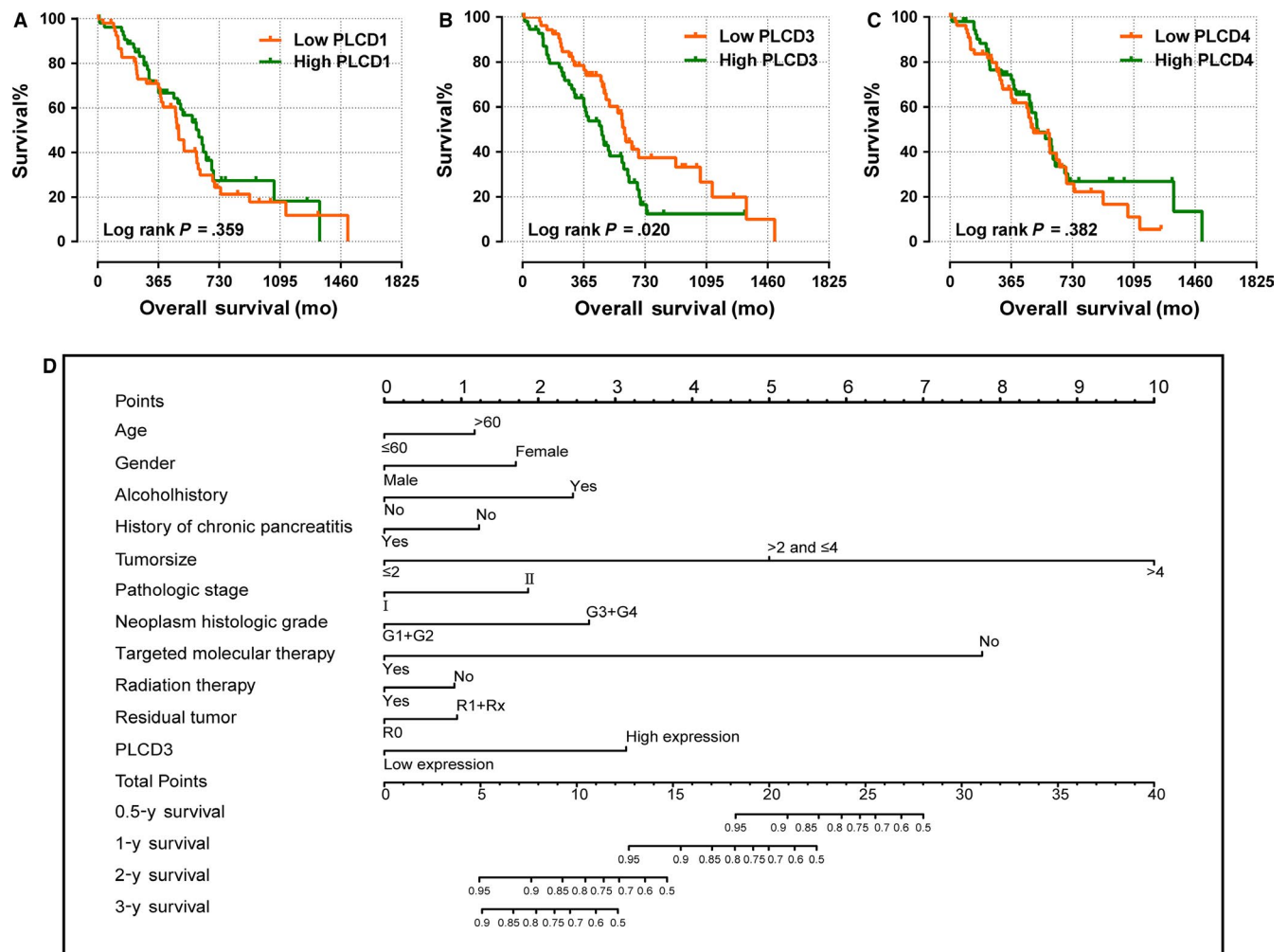


FIGURE 3 Kaplan-Meier survival curves for PLCD genes in early stage pancreatic ductal adenocarcinoma from TCGA database (A-C) and nomogram for predicting the 0.5-, 1-, 2-, and 3-y event (death) of patients in early stage pancreatic ductal adenocarcinoma (D)

TABLE 2 Joint survival analysis of *PLCD3* and clinical variables for OS of patients in early stage PDAC

Group	<i>PLCD3</i>	Variables	Events/total (n = 112)	MST (days)	Crude HR (95% CI)	Crude P-value	Adjusted HR (95% CI)	Adjusted P-value ^d
Neoplasm histologic grade								
1	Low	G1+G2	21/42	614	1		1	
2	Low	G3+G4	9/14	517	1.933 (0.866-4.316)	.108	3.717 (1.504-9.186)	.004
3	High	G1+G2	24/38	518	1.780 (0.966-3.280)	.064	2.937 (1.450-5.948)	.003
4	High	G3+G4	15/18	313	3.219 (1.607-4.447)	.001	3.578 (1.660-7.712)	.001
Targeted molecular therapy ^a								
A	Low	YES	22/40	652	1		1	
B	Low	NO	7/11	467	3.825 (1.549-9.487)	.004	4.844 (1.774-13.227)	.002
C	High	YES	19/33	627	1.528 (0.792-2.949)	.206	1.724 (0.854-3.480)	.129
D	High	NO	17/18	153	13.968 (6.445-30.274)	<.001	12.484 (5.089-30.621)	<.001
Radiation therapy ^b								
a	Low	YES	6/17	1059	1		1	
b	Low	NO	21/34	596	2.102 (0.831-5.316)	.117	1.646 (0.597-4.538)	.336
c	High	YES	9/13	627	2.553 (0.902-7.228)	.078	3.135 (1.045-9.4.4)	.041
d	High	NO	27/36	366	4.175 (1.707-10.210)	.002	2.778 (1.052-7.332)	.039
Residual resection ^c								
α	Low	R0	18/35	614	1		1	
β	Low	R1+RX	12/20	592	1.849 (0.858-3.984)	.117	2.152 (0.921-5.029)	.077
γ	High	R0	21/31	511	1.658 (0.855-3.217)	.135	2.214 (1.039-4.717)	.040
δ	High	R1+RX	17/24	308	3.565 (1.732-7.338)	.001	3.757 (1.630-8.660)	.002

Abbreviations: CI, confidence interval; HR, hazard ratio; MST, median survival time; PDAC, pancreatic ductal adenocarcinoma; *PLCD*, phospholipase C delta; OS, overall survival.

^aTargeted molecular therapy information is unavailable in 10 patients.

^bRadiation therapy is unavailable in 12 patients.

^cResidual resection is unavailable in 10 patients.

^dAdjusted for clinical variables neoplasm histologic grade, targeted molecular therapy, radiation therapy, and residual resection.

were >60 years of age, female, had a history of alcoholism, a low histological grade, had undergone radiation therapy, or R0 residual resection (Table 3).

3.4 | Prognostic signature

In order to intuitively demonstrate the relationship between *PLCD3* expression and prognostic risk, and evaluate its predictive effectiveness, a prognostic signature was constructed. It included a *PLCD3* expression scatter plot, survival scatter plot, *PLCD3* expression heat map, survival curve for high- and low-risk groups, and time-dependent ROC curve (Figure 5). In this investigation, the specific formula used to calculate the risk score was as follows: risk score = (expression of *MCM2*) \times 1.741, where 1.741 is the hazard ratio of the high *PLCD3* expression group (Table 1).

The area under the curve (AUC) of the time-dependent ROC curve was 0.625, 0.630, and 0.612 for one-, two- and three-years survival, respectively (Figure 5C).

3.5 | Genome-wide correlation analysis and bioinformatics analysis of *PLCD3*

The correlation coefficients between the *PLCD* gene and strongly correlated genes (the first thousand) were all found to be greater than 0.4, with a *P* value of <.05 (Figure 6A). KEGG pathway analysis and GO annotation of these 1000 genes and *PLCD3* indicates that *PLCD3* is associated with angiogenesis, intracellular signal transduction, regulation of cell proliferation, lipid metabolic process, lipid catabolic process, plasma membrane, intracellular, cytosol, cleavage furrow, and signal transducer activity (Table S2; Figure 6B). The gene-gene relationship network produced using GeneMANIA revealed that *PLCD* genes are linked to several genes of the diacylglycerol kinase (DGK) gene family, including DGKA, DGKB, DGKD, DGKE, DGKG, DGKH, DGKI, and DGKZ (Figure 7A). The protein-protein interaction network indicates that *PLCD* genes are mainly co-expressed with several phosphatidylinositol-5-phosphate 4-kinase (PIP4K)

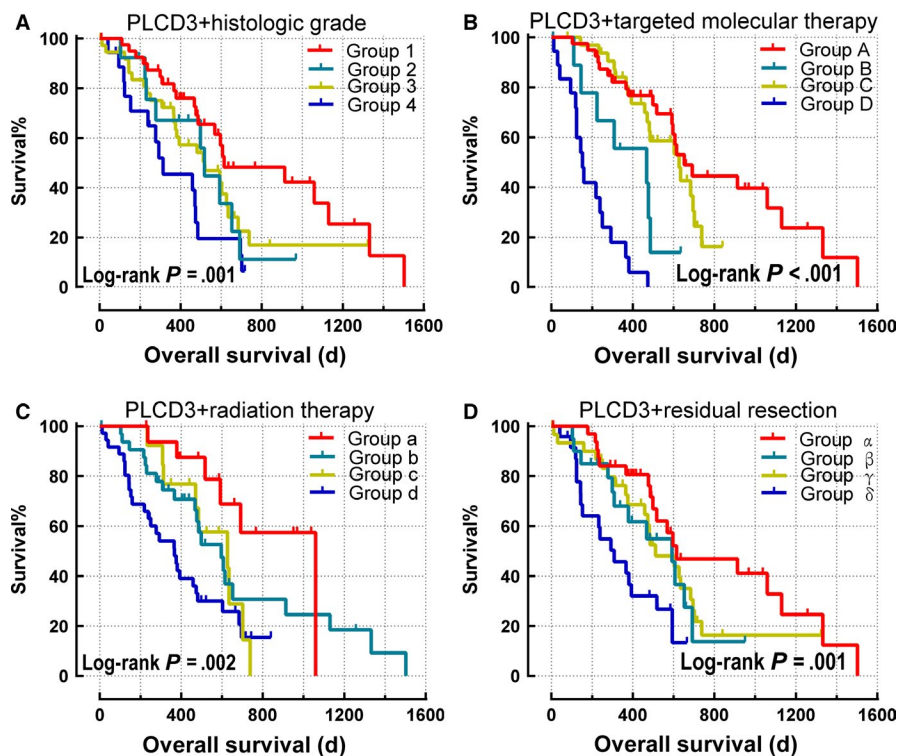


FIGURE 4 Kaplan-Meier survival curves for joint effect of *PLCD3* and clinical variables in early stage pancreatic ductal adenocarcinoma from TCGA database. Kaplan-Meier survival curves of *PLCD3* and histologic grade (A); Kaplan-Meier survival curves of *PLCD3* and targeted molecular therapy (B); Kaplan-Meier survival curves of *PLCD3* and radiation therapy (C); Kaplan-Meier survival curve of *PLCD3* and residual resection (D)

subfamily and phosphatidylinositol-4-phosphate 5-kinase (PIP5K) subfamily members, such as PIP4K2A, PIP4K2B, PIP5K1A, PIP5K1B, PIP5K1C, and PIP5KL1 (Figure 7B).

4 | DISCUSSION

Although the PLCD subfamily plays an irreplaceable role in cell signal transduction, only few studies on PLCD isoforms in all types of cancer have been conducted during recent years, let alone pancreatic cancer. In this study, we found that patients with high expression of *PLCD3* have shorter overall survival and higher levels of *PLCD3* expression in tumor tissue, which indicates that *PLCD3* plays a role as an oncogene in PDAC.

It has been reported that *PLCD1* restrains the proliferation, invasion, and migration of pancreatic cancer cells CAPAN-1 and BXPC-3, and induces apoptosis through cell cycle inhibition at the G0/G1 phase.⁴⁸ The prognostic significance of *PLCD1* in PDAC was not revealed through this investigation, but its role as a tumor suppressor gene in breast cancer, chronic myeloid leukemia, and colorectal cancer has been widely accepted.⁴⁸⁻⁵⁷

Although only an isoform, existing studies show that *PLCD3* functions as an oncogene. Silencing of *PLCD3* inhibits the proliferation, migration, and invasion potency of nasopharyngeal carcinoma 5-8F cells.³⁶ Similarly, *PLCD3* knockdown significantly arrests the proliferation of breast cancer mda-mb-231 cells.⁵⁸ In this investigation, the high *PLCD3* expression group tended to have shorter overall survival. Taken together, it can be concluded that *PLCD3* plays a role as an oncogene in nasopharyngeal cancer, breast cancer, and pancreatic cancer.

The association between *PLCD3* expression and the overall survival of early stage PDAC patients and its corresponding mechanisms observed in this study further suggest that *PLCD3* may be a new target for the treatment of pancreatic cancer, and even other types of cancers, given the fact that cancers show genetic similarity during tumorigenesis.⁵⁹

Apart from the survival analysis, we also analyzed the differential expression of PLCD. The GEPIA analysis demonstrated that *PLCD1* and *PLCD3* are highly expressed in PAAD. Though not exactly the same, PDAC accounts for more than 90% of the histological type of PAAD.⁶ Hence, we speculated that the PAAD data could be used to analyze the expression tendency of PDAC. Moreover, we also discovered that *PLCD3* is highly expressed in PDAC patients with a history of alcoholism. This indicates that drinking alcohol may increase *PLCD3* expression levels in PDAC, which in turn increases the risk of death from PDAC. This finding corresponds with that of previous reports, which indicate that the expression of *PLCD3* increases via ethanol-induced G-protein activation.⁶⁰⁻⁶²

The combined effect of clinical variables and the expression of *PLCD3* indicate that patients with two risk factors have a higher hazard ratio than those with only one risk factor. In particular, patients with the combination of high PLCD expression and no targeted molecular therapy have a noteworthy high hazard ratio (HR = 12.484, 95% CI 5.089-30.621). The stratified analysis confirmed that the prognostic value is effective in specific PDAC groups, such as those who are over 60 years old, female, have a history of alcohol use, a low histological grade, have undergone radiation therapy, or R0 residual resection.

TABLE 3 Stratification analysis of PLCD3 for OS of patients in early stage PDAC

Variables	PLCD1			PLCD3			PLCD4			Adjusted <i>P</i>	Adjusted HR (95% CI)	High	Low	Adjusted HR (95% CI)	Adjusted <i>P</i>	
	Low	High	Adjusted HR (95% CI)	Adjusted <i>P</i>	Low	High	Adjusted HR (95% CI)	Adjusted <i>P</i>	Low							High
Age (years)																
≤60	19	19	4.193 (0.939-18.736)	.061	18	20	1.189 (0.372-3.797)	.770	19	19	0.387 (0.108-1.391)	.146	19	19	0.387 (0.108-1.391)	.146
>60	37	37	0.573 (0.300-1.095)	.092	38	36	2.231 (1.169-4.258)	.015	37	37	0.839 (0.446-1.580)	.587	37	37	0.839 (0.446-1.580)	.587
Gender																
Female	29	24	0.916 (0.418-2.009)	.826	26	27	2.527 (1.045-6.108)	.040	24	29	0.979 (0.440-2.179)	.959	24	29	0.979 (0.440-2.179)	.959
Male	27	32	1.248 (0.522-2.987)	.618	30	29	1.541 (0.665-3.571)	.313	32	27	0.677 (0.294-1.555)	.358	32	27	0.677 (0.294-1.555)	.358
Alcohol history ^a																
No	22	13	0.676 (0.271-1.691)	.403	27	16	2.406 (0.768-7.536)	.132	20	23	0.820 (0.312-2.157)	.687	20	23	0.820 (0.312-2.157)	.687
Yes	28	33	0.897 (0.410-1.963)	.785	24	37	2.570 (1.057-6.249)	.037	30	31	1.252 (0.578-2.711)	.569	30	31	1.252 (0.578-2.711)	.569
Tumor size ^b																
<=4	40	40	0.783 (0.395-1.554)	.485	39	41	2.018 (0.94-4.098)	.052	40	40	0.699 (0.364-1.345)	.284	40	40	0.699 (0.364-1.345)	.284
>4	15	16	0.757 (0.207-2.768)	.674	17	14	1.466 (0.467-4.602)	.512	16	15	1.020 (0.369-2.822)	.970	16	15	1.020 (0.369-2.822)	.970
Neoplasm histologic grade																
G1 + G2	39	41	0.633 (0.327-1.227)	.176	42	38	2.993 (1.448-6.188)	.003	35	45	0.988 (0.507-1.926)	.972	35	45	0.988 (0.507-1.926)	.972
G3 + G4	17	15	2.150 (0.758-6.092)	.150	14	18	0.892 (0.275-2.888)	.848	21	11	0.335 (0.105-1.072)	.065	21	11	0.335 (0.105-1.072)	.065
Targeted molecular therapy ^c																
No	16	13	0.847 (0.349-2.056)	0.714	11	18	3.648 (1.164-11.437)	.260	14	15	0.388 (0.148-1.020)	.055	14	15	0.388 (0.148-1.020)	.055
Yes	35	38	1.205 (0.598-2.429)	0.602	40	33	1.745 (0.851-3.574)	.128	39	34	1.087 (0.553-2.136)	.809	39	34	1.087 (0.553-2.136)	.809
Radiation therapy ^d																
No	33	37	0.834 (0.451-1.542)	0.563	34	36	1.618 (0.842-3.111)	.149	38	32	0.711 (0.376-1.343)	.293	38	32	0.711 (0.376-1.343)	.293
Yes	17	13	0.941 (0.269-3.297)	0.925	17	13	4.227 (1.130-15.814)	.032	14	16	1.108 (0.363-3.388)	.857	14	16	1.108 (0.363-3.388)	.857
Residual resection ^e																
R0	31	35	1.171 (0.587-2.333)	0.654	35	31	2.487 (1.138-5.435)	.022	31	35	0.529 (0.245-1.140)	.104	31	35	0.529 (0.245-1.140)	.104
R1 + R2	24	20	1.197 (0.516-2.778)	0.675	20	24	1.716 (0.701-4.201)	.237	24	20	1.197 (0.516-2.778)	.675	24	20	1.197 (0.516-2.778)	.675

Abbreviations: CI, confidence interval; HR, hazard ratio; OS, overall survival; PDAC, pancreatic ductal adenocarcinoma; PLCD, phospholipase C delta.

^aAlcohol history is unavailable in 8 patients.

^bTumor size is unavailable in 2 patients.

^cTargeted molecular therapy information is unavailable in 10 patients.

^dRadiation therapy is unavailable in 12 patients.

^eResidual resection is unavailable in 10 patients.

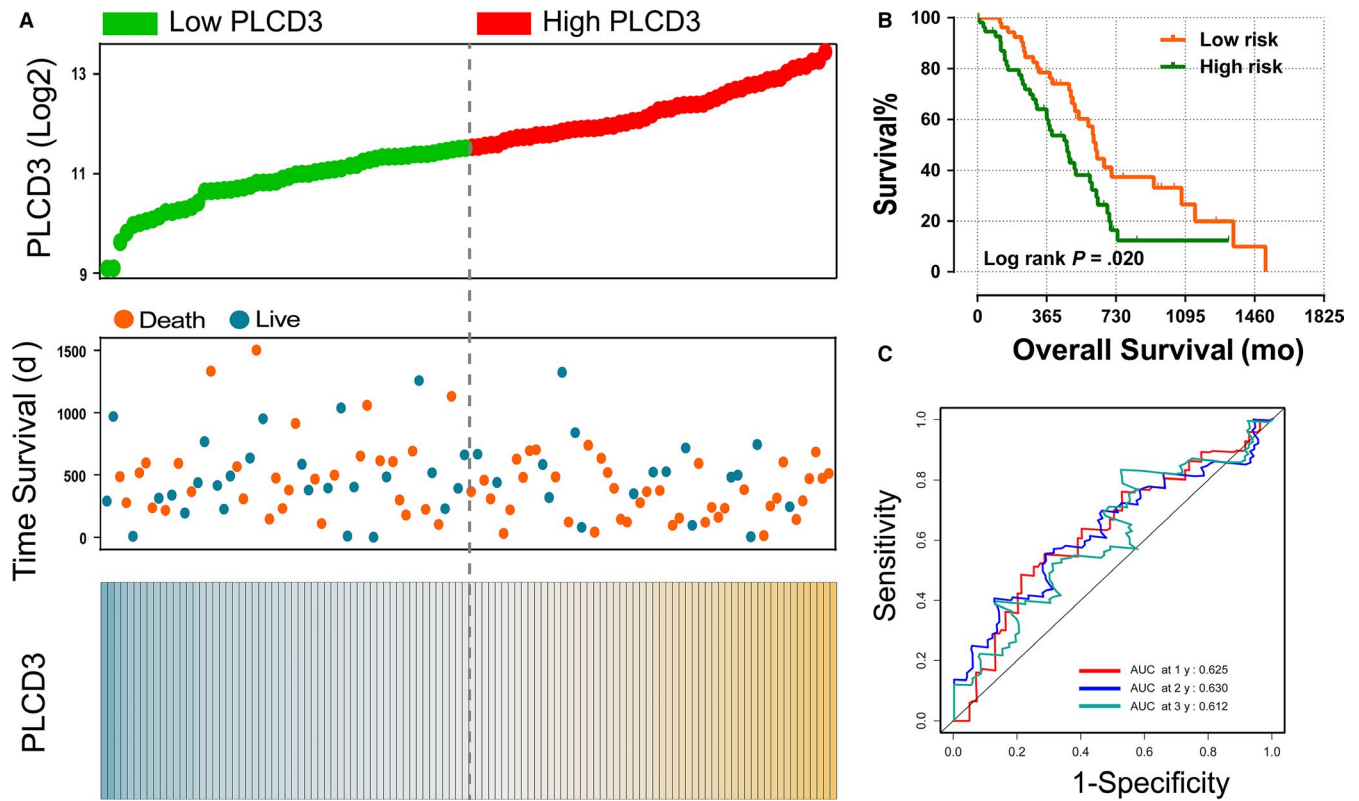


FIGURE 5 Prognostic model in early stage pancreatic ductal adenocarcinoma in terms of *PLCD3* expression. A, From up to down are risk score plot, survival status scatter plot, and heat map of the expression of *PLCD3* for low- and high-risk groups. B, Kaplan-Meier curves for low- and high-risk groups. C, ROC curve for predicting 1-, 2-, and 3-year survival in early stage pancreatic ductal adenocarcinoma patients by the risk score

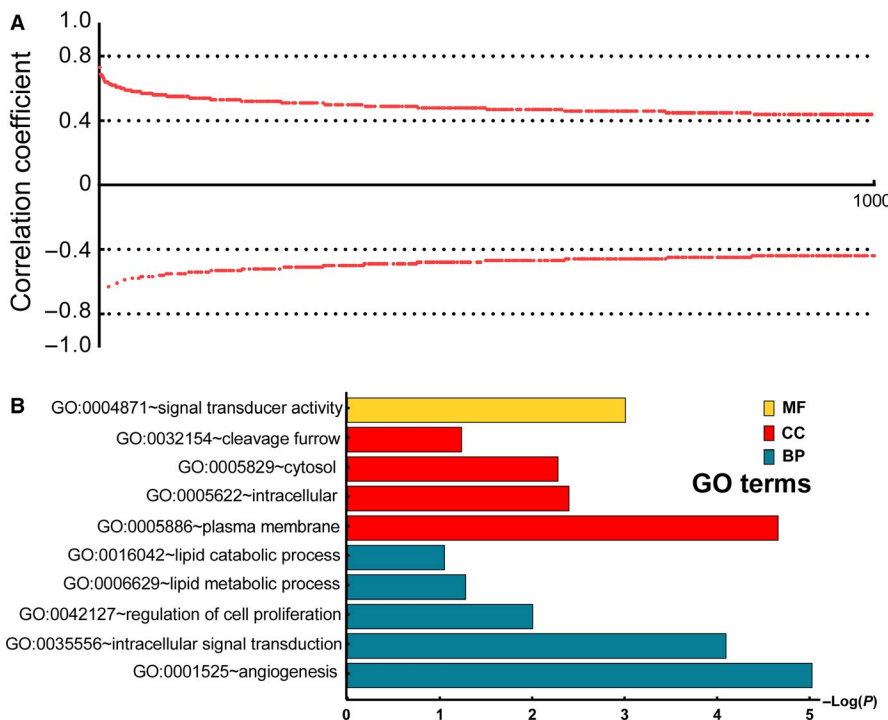


FIGURE 6 Correlation coefficient distribution of the 1000 most high correlated genes to *PLCD3* (A) and functional annotation result of *PLCD3* by KEGG pathway and GO term analysis (B)

Annotation of *PLCD3* indicates its involvement in angiogenesis, intracellular signal transduction, regulation of cell proliferation, lipid metabolism process, lipid catabolism

process, plasma membrane, intracellular, cytosol, cleavage furrow, and signal transducer activity. Among these, angiogenesis, intracellular signal transduction, and regulation of

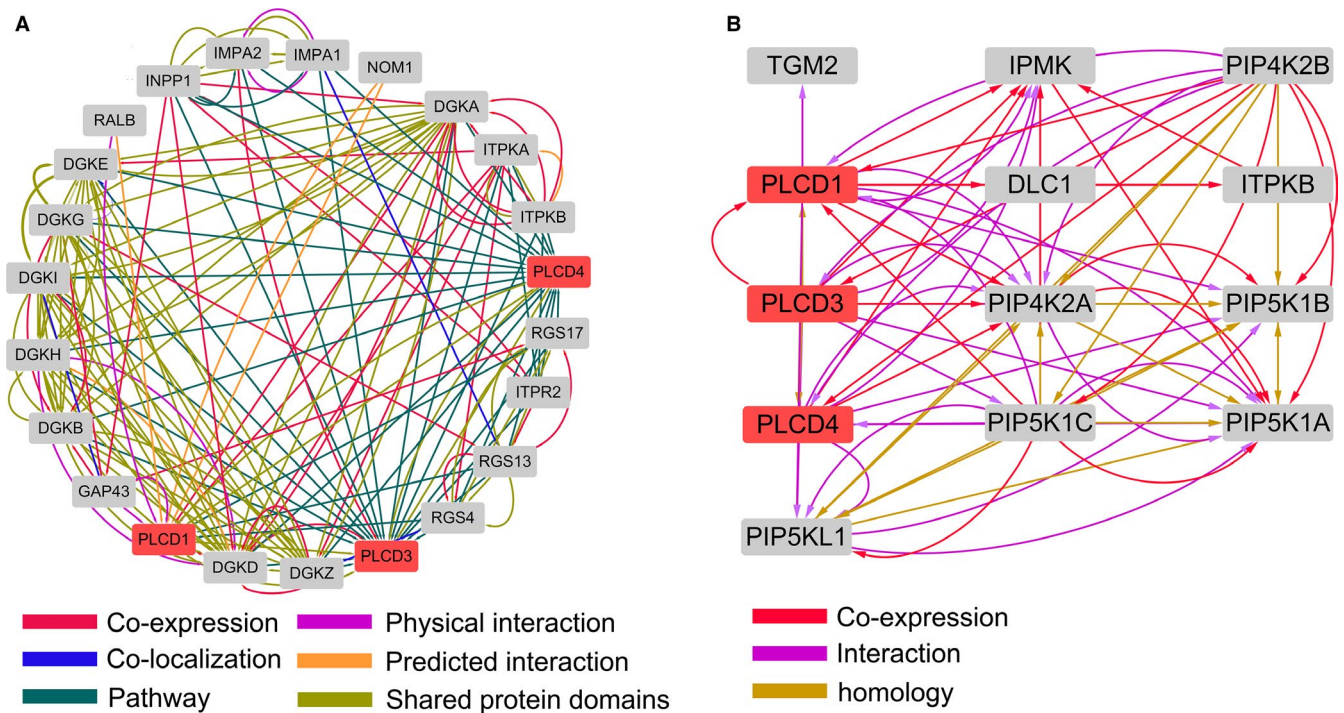


FIGURE 7 GeneMANIA gene-gene interaction networks of the PLCD genes (A) and STRING protein-protein association networks of the PLCD genes (B)

cell proliferation may be the primary biological functions of *PLCD3* in PDAC, since activation of *PLCD3* can induce angiogenesis in human endothelial cells.⁶³

However, our study has some shortcomings. First, the sample size used for the survival analysis was not large enough, which led to many false-negative results regarding *PLCD1* and *PLCD4*, especially since *PLCD1* has been shown to inhibit pancreatic cancer cell growth in other studies. Meanwhile, certain clinical data and survival data values were not available, which may affect the results of the survival analysis. Second, the data used in this study were acquired from a single-center study, and multicenter data would make the results more convincing. Third, because no transcriptome data on normal pancreatic tissues were available in the dataset acquired from TCGA, we could only use results from GEPIA to estimate the expression trend of the PLCD gene in PDAC and normal pancreatic tissues. Fourth, selection bias and recall bias may have been easily generated due to the retrospective nature of this study.

Although there are limitations in our investigation, as far as we know, this is the first study to reveal the prognostic value of *PLCD3* in PDAC. Our investigation also suggests that overexpression of *PLCD3* is associated with a history of alcoholism, which is partially explained by the role of alcohol in pancreatic cancer. The discovery of genes highly correlated with *PLCD3* opens the way forward for follow-up research on *PLCD3* in PDAC, indicating also that the study of co-expressed genes can aid in the discovery of the interaction between genes and explain the mechanism of PLCD in PDAC.

5 | CONCLUSION

In our investigation, *PLCD1* and *PLCD3* were found to be highly expressed in PAAD tumor tissue, compared with normal tissue. We also discovered that PDAC patients with a history of alcoholism had higher levels of *PLCD3* than those without a history of alcoholism. Based on the results of the survival analysis, *PLCD3* may be a potential prognostic biomarker for early stage PDAC. However, the stratification analysis found that *PLCD3* is associated with OS only in early stage PDAC patients who are >60 years of age, female, have a history of alcoholism, a low histological grade, have undergone radiation therapy, or R0 residual resection.

ACKNOWLEDGMENTS

The authors thank the contributors of TCGA database (<https://cancergenome.nih.gov/>) for sharing RNA-Sequencing data of 182 patients with pancreatic cancer on open access and University of California Santa Cruz Xena (UCSC Xena <http://xena.ucsc.edu/>) for sharing corresponding clinical and survival data of these patients.

CONFLICT OF INTERESTS

The authors have declared that there are no competing interests.

AUTHOR CONTRIBUTIONS

Xin Zhou and Tao Peng constructed the study design; Xiwen Liao, Xiangkun Wang, and Ketuan Huang made acquisition of data; Chengkun Yang, Tingdong Yu, Chuangye Han, Guangzhi Zhu, Hao Su, Quanfa Han, Zijun Chen, Jianlv Huang, Yizhen Gong, Guotian Ruan, and Xiping Ye made acquisition of data and made data analysis. Xin Zhou wrote the manuscript, and Tao Peng guided and supervised the manuscript. All authors read and approved the final manuscript.

ORCID

Xin Zhou  <https://orcid.org/0000-0003-3152-5048>

Xiwen Liao  <https://orcid.org/0000-0002-1724-1463>

Tao Peng  <https://orcid.org/0000-0001-6133-7078>

DATA AVAILABILITY STATEMENT

The datasets used and/or analyzed during the current study are available from the corresponding author on reasonable request.

REFERENCES

- Siegel RL, Miller KD, Jemal A. Cancer statistics, 2019. *CA Cancer J Clin.* 2019;69(1):7-34.
- Rahib L, Smith BD, Aizenberg R, Rosenzweig AB, Fleshman JM, Matrisian LM. Projecting cancer incidence and deaths to 2030: the unexpected burden of thyroid, liver, and pancreas cancers in the United States. *Cancer Res.* 2014;74(11):2913-2921.
- Bray F, Ferlay J, Soerjomataram I, Siegel RL, Torre LA, Jemal A. Global cancer statistics 2018: GLOBOCAN estimates of incidence and mortality worldwide for 36 cancers in 185 countries. *CA Cancer J Clin.* 2018;68(6):394-424.
- Jemal A, Siegel R, Ward E, et al. Cancer statistics, 2009. *CA Cancer J Clin.* 2009;59(4):225-249.
- Siegel R, Ma J, Zou Z, Jemal A. Cancer statistics, 2014. *CA Cancer J Clin.* 2014;64(1):9-29.
- Kamisawa T, Wood LD, Itoi T, Takaori K. Pancreatic cancer. *Lancet.* 2016;388(10039):73-85.
- Dennis EA. Introduction to thematic review series: phospholipases: central role in lipid signaling and disease. *J Lipid Res.* 2015;56(7):1245-1247.
- Suh PG, Park JI, Manzoli L, et al. Multiple roles of phosphoinositide-specific phospholipase C isozymes. *BMB Rep.* 2008;41(6):415-434.
- Oude Weernink PA, Lopez de Jesus M, Schmidt M. Phospholipase D signaling: orchestration by PIP2 and small GTPases. *Naunyn-Schmiedeberg's Arch Pharmacol.* 2007;374(5-6):399-411.
- Aloulou A, Rahier R, Arhab Y, Noiriell A, Abousalham A. Phospholipases: an overview. *Methods Mol Biol (Clifton, NJ).* 2018;1835:69-105.
- Park JB, Lee CS, Jang J-H, et al. Phospholipase signalling networks in cancer. *Nat Rev Cancer.* 2012;12(11):782-792.
- Berridge MJ. Inositol trisphosphate and calcium signalling. *Nature.* 1993;361(6410):315-325.
- De Smedt H, Parys JB. Molecular and functional diversity of inositol triphosphate-induced Ca(2+) release. *Verh K Acad Geneesk Belg.* 1995;57(5):423-458.
- Berridge MJ. Inositol trisphosphate and calcium signalling mechanisms. *Biochim Biophys Acta.* 2009;1793(6):933-940.
- Prentki M, Biden TJ, Janjic D, Irvine RF, Berridge MJ, Wollheim CB. Rapid mobilization of Ca²⁺ from rat insulinoma microsomes by inositol-1,4,5-trisphosphate. *Nature.* 1984;309(5968):562-564.
- Europe-Finner GN, Newell PC. Inositol 1,4,5-trisphosphate induces calcium release from a non-mitochondrial pool in amoebae of Dictyostelium. *Biochim Biophys Acta.* 1986;887(3):335-340.
- Kishimoto A, Takai Y, Mori T, Kikkawa U, Nishizuka Y. Activation of calcium and phospholipid-dependent protein kinase by diacylglycerol, its possible relation to phosphatidylinositol turnover. *J Biol Chem.* 1980;255(6):2273-2276.
- Berridge MJ. Inositol trisphosphate and diacylglycerol as second messengers. *Biochem J.* 1984;220(2):345-360.
- Berridge MJ, Irvine RF. Inositol trisphosphate, a novel second messenger in cellular signal transduction. *Nature.* 1984;312(5992):315-321.
- Wilson DB, Bross TE, Hofmann SL, Majerus PW. Hydrolysis of polyphosphoinositides by purified sheep seminal vesicle phospholipase C enzymes. *J Biol Chem.* 1984;259(19):11718-11724.
- Berridge MJ, Irvine RF. Inositol phosphates and cell signalling. *Nature.* 1989;341(6239):197-205.
- Rebecchi MJ, Pentylala SN. Structure, function, and control of phosphoinositide-specific phospholipase C. *Physiol Rev.* 2000;80(4):1291-1335.
- Rhee SG. Regulation of phosphoinositide-specific phospholipase C. *Annu Rev Biochem.* 2001;70:281-312.
- Gresset A, Sondek J, Harden TK. The phospholipase C isozymes and their regulation. *Sub-Cellular Biochem.* 2012;58:61-94.
- Rommerswinkel N, Keil S, Adawy A, et al. beta-Herregulin impairs EGF induced PLC-gamma1 signalling in human breast cancer cells. *Cell Signal.* 2018;52:23-34.
- Yang Y, Li J, Song QI, et al. Reduction in milk fat globule-EGF factor 8 inhibits triple-negative breast cancer cell viability and migration. *Oncol Lett.* 2019;17(3):3457-3465.
- Zhao Q, Chen S, Zhu Z, et al. miR-21 promotes EGF-induced pancreatic cancer cell proliferation by targeting Spry2. *Cell Death Dis.* 2018;9(12):1157.
- Shen Y, Ruan L, Lian C, Li R, Tu Z, Liu H. Discovery of HB-EGF binding peptides and their functional characterization in ovarian cancer cell lines. *Cell Death Discov.* 2019;5:82.
- Zeng X-Y, Xie H, Yuan J, et al. M2-like tumor-associated macrophages-secreted EGF promotes epithelial ovarian cancer metastasis via activating EGFR-ERK signaling and suppressing lncRNA LIMT expression. *Cancer Biol Ther.* 2019;1-11.
- Fukami K. Structure, regulation, and function of phospholipase C isozymes. *J Biochem.* 2002;131(3):293-299.
- Irino Y, Cho H, Nakamura Y, et al. Phospholipase C delta-type consists of three isozymes: bovine PLCdelta2 is a homologue of human/mouse PLCdelta4. *Biochem Biophys Res Commun.* 2004;320(2):537-543.
- Fu L, Qin YR, Xie D, et al. Characterization of a novel tumor-suppressor gene PLC delta 1 at 3p22 in esophageal squamous cell carcinoma. *Cancer Res.* 2007;67(22):10720-10726.
- Hu D, Jiang Z. Phospholipase C delta 1 (PLCD1) inhibits the proliferation, invasion and migration of CAPAN-1 and BXPC-3 pancreatic cancer cells. *Xi Bao Yu Fen Zi Mian Yi Xue Za Zhi.* 2016;32(6):739-745.

34. Zhang X, Shi G, Gao F, Liu P, Wang H, Tan X. TSPAN1 upregulates MMP2 to promote pancreatic cancer cell migration and invasion via PLC γ . *Oncol Rep*. 2019;41(4):2117-2125.
35. Hu B, Shi C, Jiang HX, Qin SY. Identification of novel therapeutic target genes and pathway in pancreatic cancer by integrative analysis. *Medicine*. 2017;96(42):e82261.
36. Liu W, Liu X, Wang L, et al. PLCD3, a flotillin2-interacting protein, is involved in proliferation, migration and invasion of nasopharyngeal carcinoma cells. *Oncol Rep*. 2018;39(1):45-52.
37. Sakurai K, Hirata M, Yamaguchi H, Nakamura Y, Fukami K. Phospholipase C δ 3 is a novel binding partner of myosin VI and functions as anchoring of myosin VI on plasma membrane. *Adv Enzyme Regul*. 2011;51(1):171-181.
38. Tang Z, Kang B, Li C, Chen T, Zhang Z. GEPIA2: an enhanced web server for large-scale expression profiling and interactive analysis. *Nucleic Acids Res*. 2019;47(W1):W556-W560.
39. Chen R-C, Wang X-D, Dong J-Z, et al. A MELD-based nomogram for predicting 3-month mortality of patients with acute-on-chronic hepatitis B liver failure. *Clinica Chimica Acta Int J Clin Chem*. 2017;468:195-200.
40. Liao X, Han C, Wang X, et al. Prognostic value of minichromosome maintenance mRNA expression in early-stage pancreatic ductal adenocarcinoma patients after pancreaticoduodenectomy. *Cancer Manag Res*. 2018;10:3255-3271.
41. Liao X, Liu X, Yang C, et al. Distinct diagnostic and prognostic values of minichromosome maintenance gene expression in patients with hepatocellular carcinoma. *J Cancer*. 2018;9(13):2357-2373.
42. da Huang W, Sherman BT, Lempicki RA. Systematic and integrative analysis of large gene lists using DAVID bioinformatics resources. *Nat Protoc*. 2009;4(1):44-57.
43. Szklarczyk D, Franceschini A, Kuhn M, et al. The STRING database in 2011: functional interaction networks of proteins, globally integrated and scored. *Nucleic Acids Res*. 2011;39(Database issue):D561-D568.
44. Szklarczyk D, Morris JH, Cook H, et al. The STRING database in 2017: quality-controlled protein-protein association networks, made broadly accessible. *Nucleic Acids Res*. 2017;45(D1):D362-D368.
45. von Mering C, Huynen M, Jaeggi D, Schmidt S, Bork P, Snel B. STRING: a database of predicted functional associations between proteins. *Nucleic Acids Res*. 2003;31(1):258-261.
46. Mostafavi S, Ray D, Warde-Farley D, Grouios C, Morris Q. GeneMANIA: a real-time multiple association network integration algorithm for predicting gene function. *Genome Biol*. 2008;9(Suppl 1):S4.
47. Warde-Farley D, Donaldson SL, Comes O, et al. The GeneMANIA prediction server: biological network integration for gene prioritization and predicting gene function. *Nucleic Acids Res*. 2010;38(Web Server issue):W214-W220.
48. Hu D, Jiang Z. Phospholipase C delta1 (PLCD1) inhibits the proliferation, invasion and migration of CAPAN-1 and BXPC-3 pancreatic cancer cells. *Xi Bao Yu Fen Zi Mian Yi Xue Za Zhi*. 2016;32(6):739-745.
49. Shao Q, Luo X, Yang D, et al. Phospholipase C delta1 suppresses cell migration and invasion of breast cancer cells by modulating KIF3A-mediated ERK1/2/beta-catenin/MMP7 signalling. *Oncotarget*. 2017;8(17):29056-29066.
50. Mu H, Wang NA, Zhao L, et al. Methylation of PLCD1 and adenovirus-mediated PLCD1 overexpression elicits a gene therapy effect on human breast cancer. *Exp Cell Res*. 2015;332(2):179-189.
51. Xiang T, Li L, Fan Y, et al. PLCD1 is a functional tumor suppressor inducing G(2)/M arrest and frequently methylated in breast cancer. *Cancer Biol Ther*. 2010;10(5):520-527.
52. Hu X-T, Zhang F-B, Fan Y-C, et al. Phospholipase C delta 1 is a novel 3p22.3 tumor suppressor involved in cytoskeleton organization, with its epigenetic silencing correlated with high-stage gastric cancer. *Oncogene*. 2009;28(26):2466-2475.
53. Song JJ, Liu Q, Li Y, et al. Epigenetic inactivation of PLCD1 in chronic myeloid leukemia. *Int J Mol Med*. 2012;30(1):179-184.
54. Xiang Q, He X, Mu J, et al. The phosphoinositide hydrolyase phospholipase C delta1 inhibits epithelial-mesenchymal transition and is silenced in colorectal cancer. *J Cell Physiol*. 2019;234(8):13906-13916.
55. Satow R, Hirano T, Batori R, Nakamura T, Murayama Y, Fukami K. Phospholipase C δ 1 induces E-cadherin expression and suppresses malignancy in colorectal cancer cells. *Proc Natl Acad Sci USA*. 2014;111(37):13505-13510.
56. Fu L, Qin YR, Xie D, et al. Characterization of a novel tumor-suppressor gene PLC delta 1 at 3p22 in esophageal squamous cell carcinoma. *Can Res*. 2007;67(22):10720-10726.
57. Lien YC, Noel T, Liu H, Stromberg AJ, Chen KC, St Clair DK. Phospholipase C-delta1 is a critical target for tumor necrosis factor receptor-mediated protection against adriamycin-induced cardiac injury. *Can Res*. 2006;66(8):4329-4338.
58. Rebecchi MJ, Raghur A, Scarlata S, Hartenstine MJ, Brown T, Stallings JD. Expression and function of phospholipase C in breast carcinoma. *Adv Enzyme Regul*. 2009;49(1):59-73.
59. Hanahan D, Weinberg RA. Hallmarks of cancer: the next generation. *Cell*. 2011;144(5):646-674.
60. Rubin R, Hoek JB. Alcohol-induced stimulation of phospholipase C in human platelets requires G-protein activation. *Biochem J*. 1988;254(1):147-153.
61. Hoek JB, Thomas AP, Rubin R, Rubin E. Ethanol-induced mobilization of calcium by activation of phosphoinositide-specific phospholipase C in intact hepatocytes. *J Biol Chem*. 1987;262(2):682-691.
62. Hoek JB, Rubin R, Thomas AP. Ethanol-induced phospholipase C activation is inhibited by phorbol esters in isolated hepatocytes. *Biochem J*. 1988;251(3):865-871.
63. Kim Y-M, Kim Y-M, Lee YM, et al. TNF-related activation-induced cytokine (TRANCE) induces angiogenesis through the activation of Src and phospholipase C (PLC) in human endothelial cells. *J Biol Chem*. 2002;277(9):6799-6805.

SUPPORTING INFORMATION

Additional supporting information may be found online in the Supporting Information section.

How to cite this article: Zhou X, Liao X, Wang X, et al. Noteworthy prognostic value of phospholipase C delta genes in early stage pancreatic ductal adenocarcinoma patients after pancreaticoduodenectomy and potential molecular mechanisms. *Cancer Med*. 2020;9:859-871. <https://doi.org/10.1002/cam4.2699>