

RESEARCH ARTICLE

Open Access



The prevalence of severe depression in Iranian older adult: a meta-analysis and meta-regression

Nader Salari¹, Masoud Mohammadi¹, Aliakbar Vaisi-Raygani¹, Alireza Abdi¹, Shamarina Shohaimi², Behnam Khaledipaveh³, Alireza Daneshkhah⁴ and Rostam Jalali^{1*}

Abstract

Background: Depression is one of the most common psychiatric disorders in the older adult and one of the most common risk factors for suicide in the older adult. Studies show different and inconsistent prevalence rates in Iran. This study aims to determine the prevalence of severe depression in Iranian older adult through a meta-analysis approach.

Methods: The present meta-analysis was conducted between January 2000–August 2019. Articles related to the subject matter were obtained by searching Scopus, Scencedirect, SID, magiran, Barakat Knowledge Network System, Medline (PubMed), and Google Scholar databases. The heterogeneity of the studies was evaluated using I^2 index and the data were analyzed in Comprehensive Meta-Analysis software.

Results: In a study of 3948 individuals aged 50–90 years, the overall prevalence of severe depression in Iranian older adult was 8.2% (95% CI, 4.14–6.3%) based on meta-analysis. Also, in order to investigate the effects of potential factors (sample size and year of study) on the heterogeneity of severe depression in Iranian older adult, meta-regression was used. It was reported that the prevalence of severe depression in Iranian older adult decreased with increasing sample size and increasing years of the study, which is significantly different ($P < 0.05$).

Conclusion: Considering the high prevalence of severe depression in Iranian older adult, it is necessary for health policy makers to take effective control measures and periodic care for the older adult.

Keywords: Prevalence, Severe depression, Iranian older adult, Meta-analysis

Background

Older adult is an inevitable biological process that affects all living things and is associated with unpleasant experiences in some cases [1]. The aging process refers to the gradual decline in the function of the body's systems, including cardiovascular, respiratory, genitourinary, endocrine glands, and immune system [2].

Social, economic, and scientific developments in recent years have increased life expectancy and reduced mortality rates, leading to an increase in the world's older adult population [3]. The older adult population is

estimated to be doubled during next 40 years in the world [4].

Today, aging has become a major global phenomenon and according to WHO statistics, the number of older adult in Southwest Asian countries, including Iran, will reach 15% of the total population by 2030 [5]. Other reports suggest that the number of people aged ≥ 60 years will increase from 841 million people in 2013 to 1.2 billion people in 2025, with 70% of them living in developing countries and 8 out of every 10 older adult people in the world are expected to live in developing areas by 2050 [6].

Iran, as one of the developing countries, is not excluded from these demographic changes, with the older adult population is projected to grow from 8.2% in 2011 to 10% in 2021 [7]. Despite the growth of the older adult

* Correspondence: ks_jalali@yahoo.com

¹Department of Nursing, School of Nursing and Midwifery, Kermanshah University of Medical Sciences, Kermanshah, Iran

Full list of author information is available at the end of the article



population, the needs and problems of this stratum are more pronounced and need to be taken into consideration [7–9].

Depression is one of the most common psychiatric disorders in the older adult and one of the most common risk factors for suicide in the older adult [10], which accounts for nearly 24% of successful suicides, and older adult suicide victims attempted suicide in their first depression attack. The frequency of the symptoms of major depression has been reported to be 8–15% and approximately 30% among the non-hospitalized and hospitalized older adult, respectively [10–12].

Previous studies in different parts of Iran show different reports of the prevalence of severe depression, including 23% in Isfahan [13], 3.3% in Birjand [14], and 11% prevalence in the study in Gilan [15]; therefore, as can be seen, the reported information provides scattered and inconsistent information and since interventional studies to reduce the prevalence of severe depression in the older adult require accurate and consistent information in order to prevent severe depression problems and complications in this population, the question is, how much is the overall prevalence of severe depression in Iranian older adult?

The aim of the present study is to review the overall prevalence of severe depression in Iranian older adult based on a meta-analysis approach.

Methods

This study is a meta-analysis, based on the findings of studies on the prevalence of severe depression among Iranian older adult, including articles published in domestic and foreign journals and searches carried out in the databases of Scenedirect, Scopus, SID, magiran, Medline (PubMed), Barakat Knowledge Network System, and Google Scholar between January 2000 to August 2019. The search process was carried out using the keywords Older adult, Depression, Mood Disorders, Types of Depression, Severe Depression and their English equivalents and their possible combinations, search engine using both English and Persian words and (AND) and (OR) operators were used in combination to provide more comprehensive access to all articles, therefore, the OR operator was used to check for common names for disorders such as (Older adult OR Aging), (depression OR Depressive Disorder), (mood disorders OR Affective Disorders). The AND operator was also used among the keywords (Older adult AND depression AND severe depression) by matching words in the MeSH browser.

Evaluation of articles and quality control

All articles were first collected using the selected keywords and a list of abstracts was prepared after the search was completed. After hiding the article specifications, including

the name of the magazine and the author, the full text of the articles was made available to the reviewers. Each article was studied independently by two reviewers and if the article was excluded, the reason was mentioned. Articles in Persian and English extracted from cross-sectional studies on the prevalence and of severe depression in Iranian older adult met the inclusion criteria. Other review, case-control, cohort, and intervention studies were excluded from the list of articles. The studies were then reviewed based on four-phase PRISMA (2009).

STROBE checklist was used to review studies. This checklist consists of various methodological aspects, including study objectives, determination of appropriate sample size, type of study, sampling method, research population, data collection method, definition of variables and procedure, study data collection tool, study objectives, statistical tests, and findings. Accordingly, a maximum quality evaluation score of 32 was considered and articles with scores below 14 were excluded from the study.

Statistical analysis

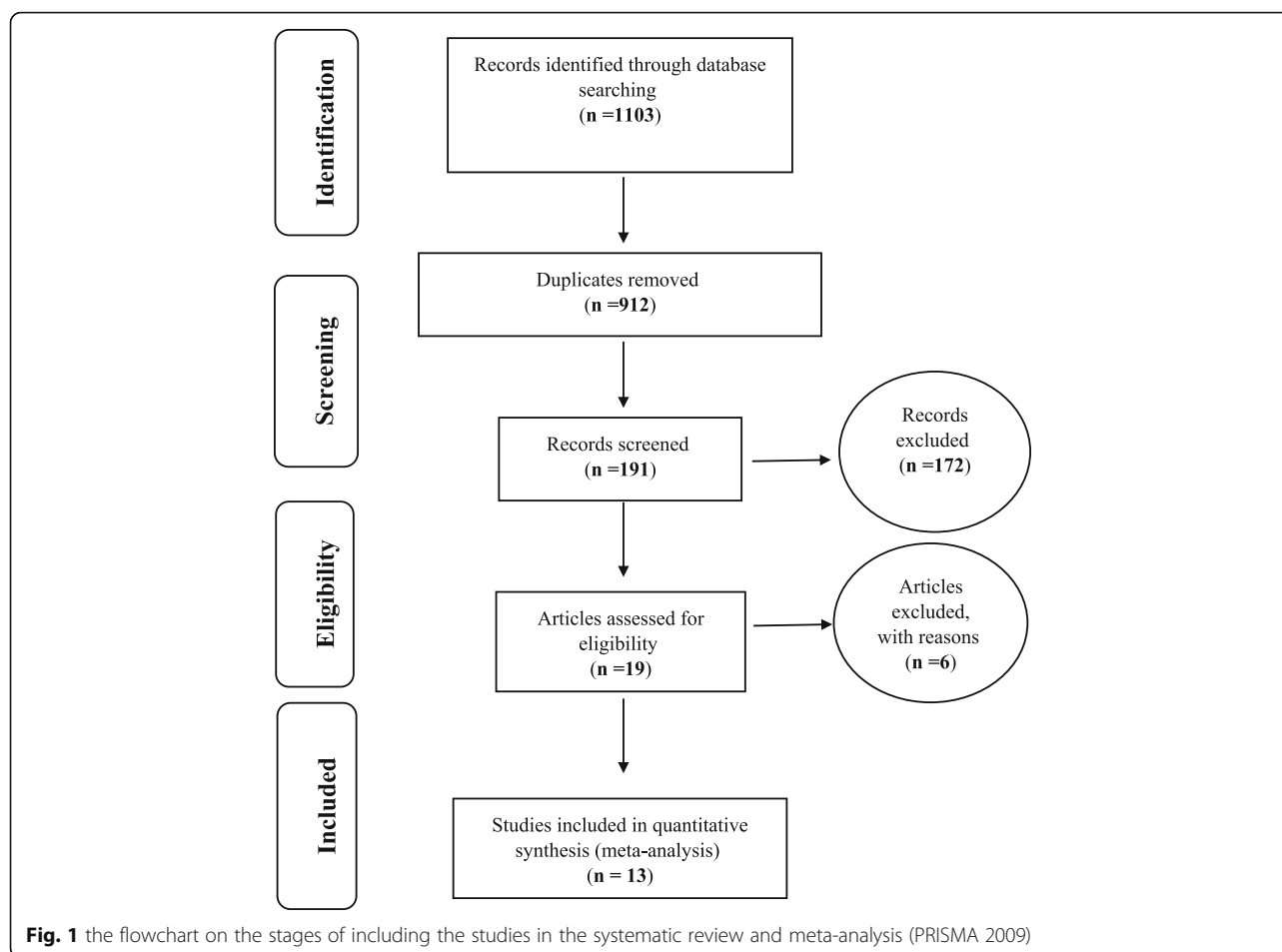
Data were analyzed using Comprehensive Meta-analysis software (Biostat, Englewood, NJ, USA version 3), the heterogeneity of the studies was assessed using the I^2 test and probability of publication bias Funnel chart using Egger test and significance level 0.05 and also to investigate the effects of potential factors on heterogeneity of studies from Meta-regression test.

Results

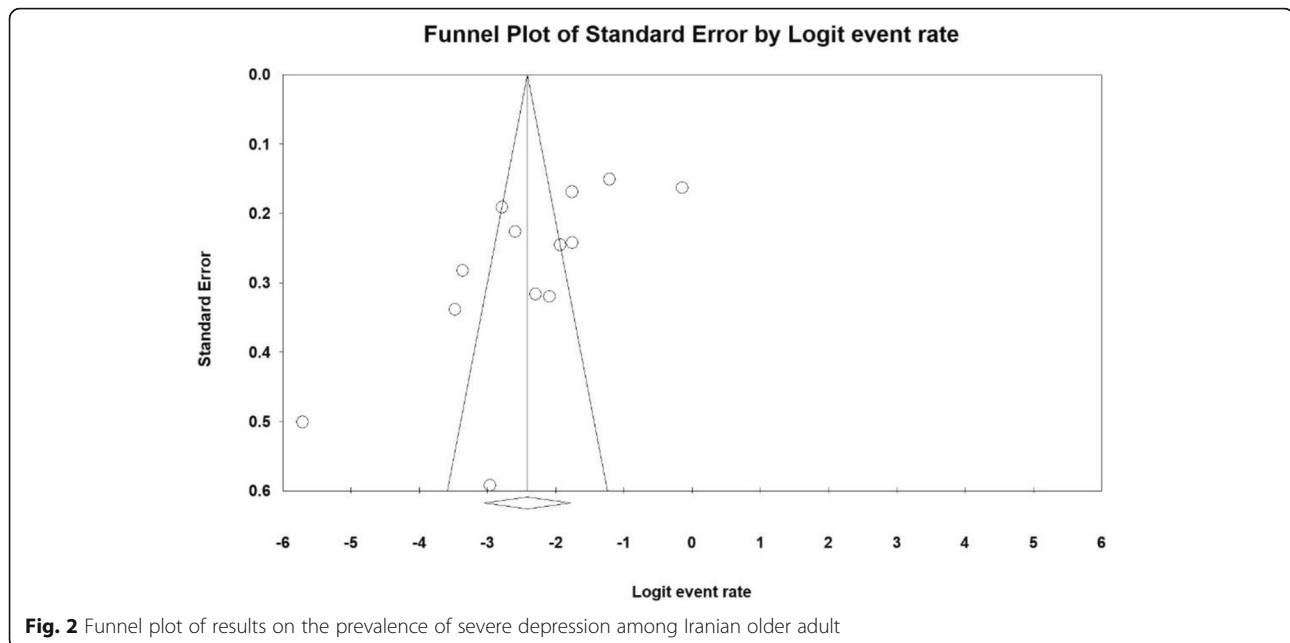
Based on investigations on the prevalence of severe depression in Iranian older adult, including articles published in domestic and foreign journals and searches in Magiran, SID, Barakat Knowledge Network System databases, Medline, ScienceDirect, Scopus, and Google scholar, PRISMA 2009 was used to show the reviewing process (Fig. 1). A total of 191 articles met the initial inclusion criteria based on initial reviews after deleting 912 duplicate articles. Ultimately 13 articles entered the meta-analysis phase after excluding 172 unrelated articles, 6 articles during secondary review because of lack of access to their abstracts and main articles, and low quality of articles (Table 1).

Publication bias

The heterogeneity of the studies was evaluated using I^2 test that was equal to 98.7%, indicating high heterogeneity of the included studies, so, random effects model was used to combine the results of the studies. Also, the results of the publication bias were compared using Egger test (Fig. 2), which was not statistically significant ($P = 0.061$).

**Table 1** Specifications of studies entered the study

Row	Author	Publication year	published	Area	Participants' Age	Sample size	Prevalence
1	Sadeghi et al. [13]	2002	In Persian	Tehran	65–85	279	14.7
2	Rajabizadeh et al. [14]	2003	In Persian	Kerman	≥50	1212	0.3
3	Khodadadi et al. [15]	2007	In Persian	Guilan	64.6 ± 5.05	100	11
4	Sohrabi et al. [16]	2008	In Persian	Shahroud	76.5 ± 11.1	136	43.5
5	Manzori et al. [17]	2009	In Persian	Isfahan	60–74	248	23
6	Nejati et al. [18]	2009	In Persian	Qom	68.2 ± 7.7	151	46.3
7	Mobasheri et al. [19]	2009	In Persian	Shahr-e-kord	68.7 ± 16.1	61	3.5
8	Kashfi et al. [20]	2010	In Persian	Shiraz	≥60	120	9.1
9	Gharanjik et al. [21]	2011	In Persian	Torkaman	–	300	3
10	Ghaderi et al. [22]	2012	In Persian	Bukan	60–90	302	7
11	Miri et al. [23]	2015	In Persian	Birjand	63.6 ± 3.7	389	3.3
12	Khalili et al. [24]	2015	In Persian	Kashan	72.07 ± 9.03	500	5.8
13	Ashrafi et al. [25]	2017	In Persian	Salmas	69.9 ± 6.8	150	6.3



The total number of samples included in the study was 3948 individuals aged 50–90 years. The overall prevalence of severe depression among Iranian older adult was 8.2% (95% CI: 4.6–14.3%) according to the meta-analysis. The highest prevalence of severe depression among Iranian older adult 46.3% was seen among the older adult in Qom (95% CI: 38.6–54.3%) in 2009 [18], and the lowest prevalence of severe depression 0.3% was also reported in the older adult in Kerman Province (95% CI: 0.1–0.9%) in 2003 [14] (Fig. 3). Fig. 3 shows the prevalence of severe depression by a random effects model, in which the black square indicates the prevalence rate and the length of the segment on which, the square is located, represents 95% CI in each study. The diamond sign indicates the prevalence rate at the national level in all studies.

Sub-group analysis and meta-regression

Table 2 reports the results of the sub-group analysis according to the Geographical region, year of publication, and sample size (Table 2).

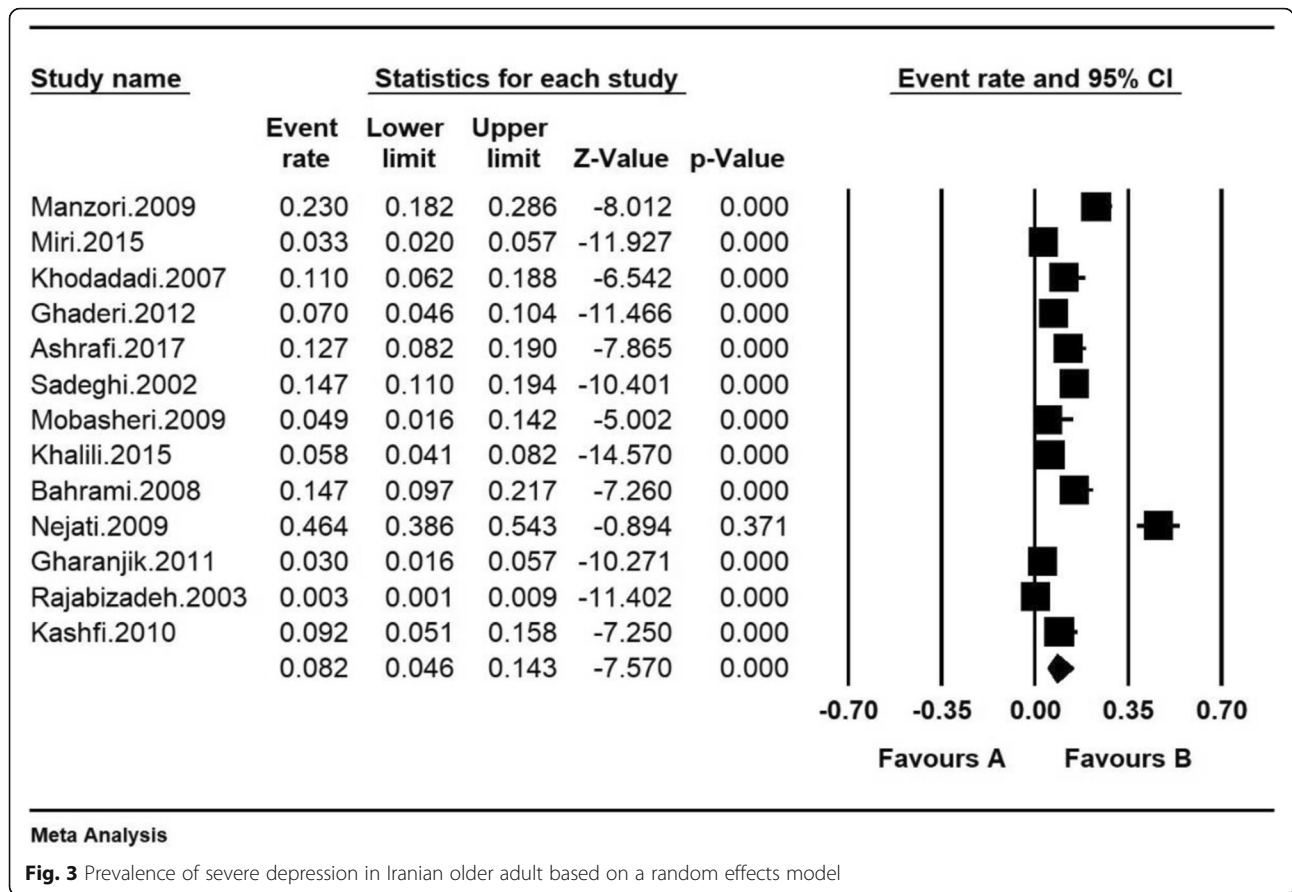
In order to investigate the effects of potential contributing factors on the heterogeneity of studies on prevalence of severe depression in Iranian older adult, the meta-regression test was used to study the three factors of sample size, year of study and age of study participants (Figs. 4, 5 and 6). With increasing sample size and year of study, the prevalence of severe depression in Iranian older adult decreases, which is statistically significant (Figs. 4 and 5) ($P < 0.05$) and With increasing

age of study participants, the prevalence of severe depression in Iranian older adult increases, which is statistically significant (Fig. 6) ($P < 0.05$).

Discussion

The results of the present study and investigation of 3948 people aged 50–90 years, the overall prevalence of severe depression in Iranian older adult was reported to be 8.2% based on a meta-analysis. Results of a meta-analysis study showed the overall prevalence of depression in the older adult was 43% in Iran between 2001 and 2015 [26]. A study in Sweden showed the prevalence of depression was 4.2% and the moderate-severe type was 1.6% [27]. A study in China also showed that the overall prevalence of depression in the older adult was 36.9%, and reported that the prevalence of symptoms was higher in women 50.4% as compared to men 33.3%. In general, the prevalence of moderate to severe depression was 3.9% in their study [28]. The prevalence of mild-moderate depression and mild-severe depression was reported to be 27, and 12% in a study in Greek, respectively [29]. Another study in China reported that 26.5 and 4.4% of older adult people with depression had mild and severe depression, respectively [30].

Depression is often not diagnosed in the older adult and has important impacts on quality of life, clinical outcomes, functional status, medical services, mortality, and disability [31]. Depression in the older adult also leads to increased drug use, increase costs for drugs and over-the-counter drugs, higher risk of alcohol abuse, increased

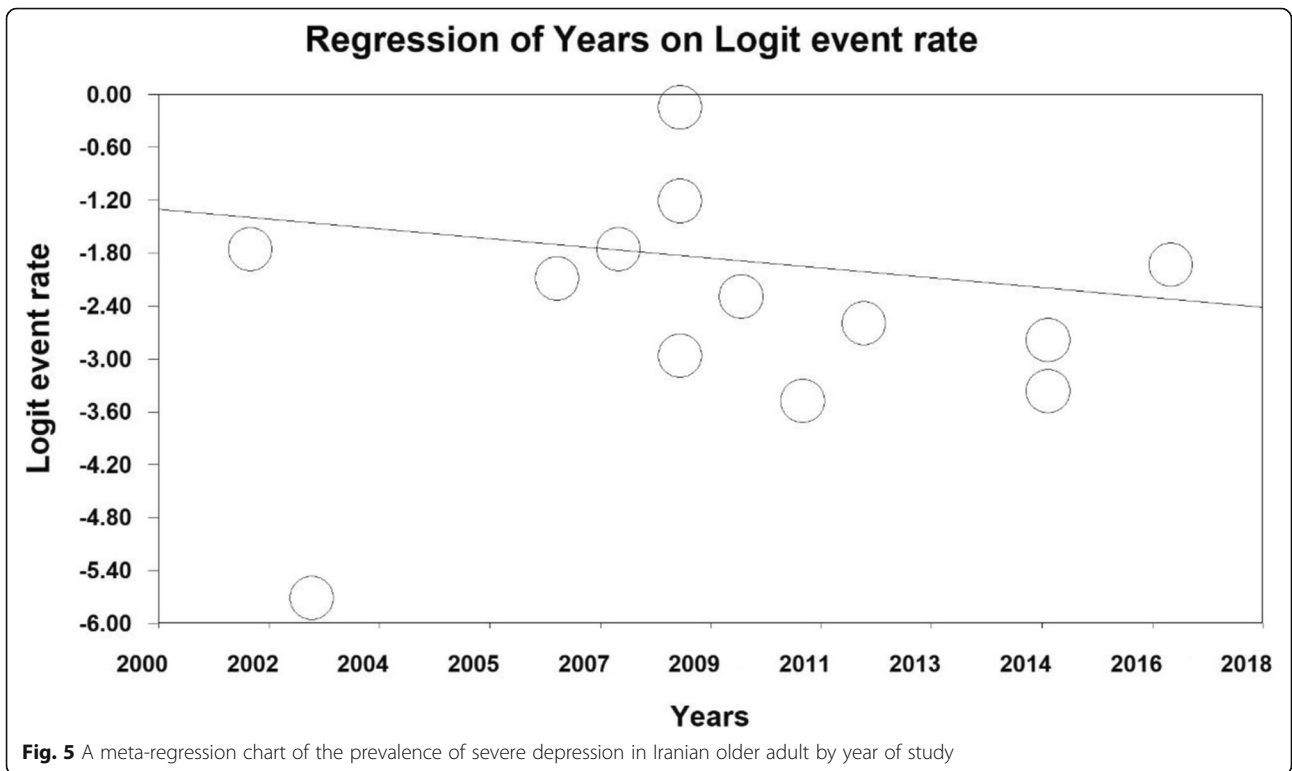
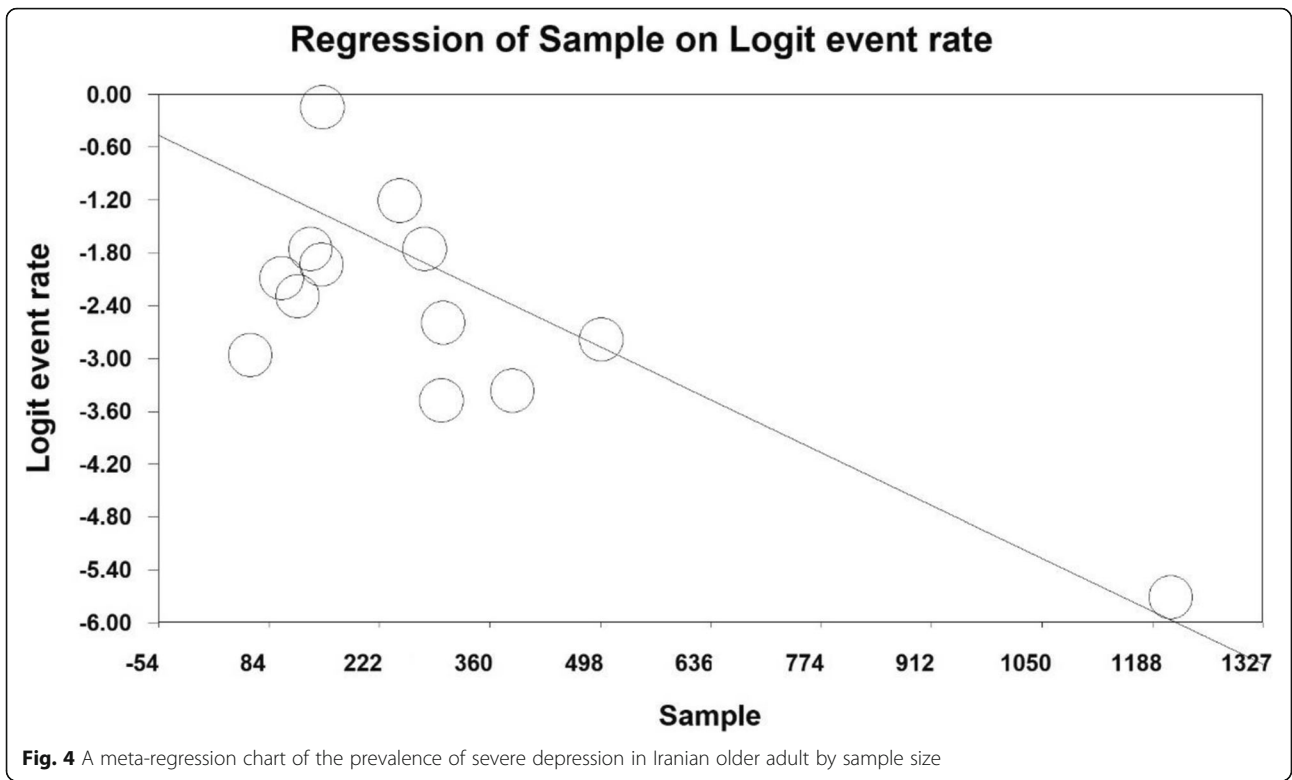


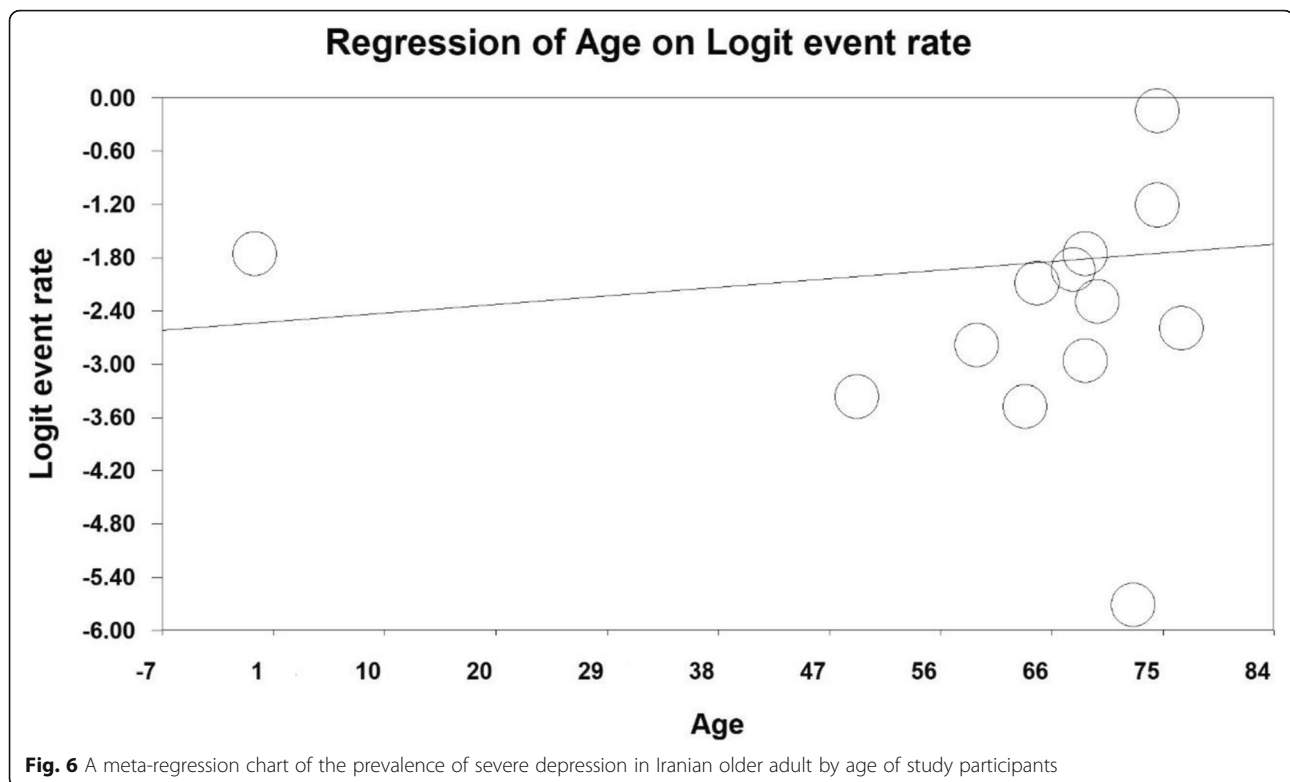
length of stay, and cost of care [32]. Depression occurs in the older adult, similar to younger people due to socio-psychological and biological factors [33]. Depression is a relapsing persistent disease, and risk factors for depression in older adult people include social isolation, marital status, divorce or separation, low socioeconomic status, debilitating comorbidities, insomnia, and functional and cognitive disorders [34].

Based on the results of various studies it was reported that depression in older adult had a significant relationship with married statuses, satisfaction with place of living, use of medicine, living with spouse and children, emotional support of family, members, emotional support of friends, emotional support of others, satisfaction with relations and satisfaction with overall support [15, 19, 23].

Table 2 The results of sub-group analyses

Variables	No. studies	Prevalence% (95% CI)	I ² (%)	P value	No. participants	
Geographical region	North	4	6.5 (2.8–14.5%)	89.5	0.000	925
	South	2	1.8 (0.1–3.4%)	96.9	0.000	1332
	East	–	–	–	–	–
	West	3	8.4 (5–13.9%)	61	0.000	513
	Center	4	18.7 (7.6–29.1%)	97	0.000	1178
Year of publication	2000–2006	2	2.4 (0.1–54.1%)	–	–	1491
	2007–2010	6	15.9 (8.2–28.6%)	99	0.000	816
	> 2011	5	5.7 (3.5–9.1%)	98.2	0.000	1641
Sample size	< 200	6	14 (6.3–28.4%)	99.5	0.000	718
	200–400	5	7.9 (3.6–16.6%)	96.2	0.000	1518
	> 400	2	1.5 (0.1–20.6%)	–	0.000	1712





These studies also reported that Prevalence of mental disorders among older age, female, low education, marital status, activity, and income, unemployed and disabled older adult was significantly [19, 20, 25].

Increased rates of depression in the older adult, especially the severe type reported in this study, are often neglected, making it difficult to diagnose and treat the disease in a timely manner. This is an unfortunate reality because depression is a disorder for which effective treatments are available today. The results of interventional studies Legrand et al. [35] and Koshyar et al. [36] were indicated in the reducing depression: regular physical activity and appropriate diet were Reduced the level of depression, These studies reported that both outdoors and indoors 15-min self-paced walks and Participating in enjoyable and pleasant exercises were associated with significant and positive affective, There is scientific agreement that exercise temporarily makes people feel more positively activated so that more frequent exercise may lead to a greater cumulative effect on positive affect and perhaps more opportunities to reduce negative thoughts and ruminative processes [35, 36].

It is also worth noting that the reduced mental ability and the feeling of sadness is not part of the normal aging process and this mood state should be considered important [34, 37]; therefore, considering the foregoing, screening and secondary prevention measures by nurses

and healthcare providers are of great importance. Moreover, increasing families' awareness of depression in the older adult will also pave the way for early diagnosis and more appropriate treatment.

Limitations

The most important limitations of the current study include the lack of access to full text and the poor quality of some of the studies studied.

Conclusion

Considering the high prevalence of severe depression in the Iranian older adult, it is necessary for health policy makers to take effective control measures including periodic care for the older adult.

Abbreviations

PRISMA: Preferred reporting items for systematic reviews and meta-analysis; SID: Scientific information database; STROBE: Strengthening the reporting of observational studies in epidemiology for cross-sectional study; WHO: World health organization

Acknowledgements

The authors thank the faculty members of the Faculty of Nursing and Midwifery, Kermanshah University of Medical Sciences.

Authors' contributions

AVR and RJ and NS contributed to the design, MM and AA and BKH statistical analysis, participated in most of the study steps. SHSH and AD prepared the manuscript. RJ and MM and NS assisted in designing the study, and helped in the interpretation of the study. All authors have read and approved the content of the manuscript.

Funding

Not declared.

Availability of data and materials

Datasets are available through the corresponding author upon reasonable request.

Ethics approval and consent to participate

Not declared.

Consent for publication

Not applicable.

Competing interests

The authors declare that they have no competing interests.

Author details

¹Department of Nursing, School of Nursing and Midwifery, Kermanshah University of Medical Sciences, Kermanshah, Iran. ²Department of Biology, Faculty of Science, University Putra Malaysia, Serdang, Selangor, Malaysia. ³Department of Psychiatric Nursing, School of Nursing and Midwifery, Kermanshah University of Medical Sciences, Kermanshah, Iran. ⁴School of Computing, Electronics and Maths, Coventry University, London, UK.

Received: 15 October 2019 Accepted: 27 January 2020

Published online: 03 February 2020

References

- Fakari FR, Hashemi MA, Fakari FR. A qualitative research: postmenopausal women's experiences of abuse. *Procedia Soc Behav Sci*. 2013;82:57–60.
- Delvarian M, Hashemi M. Evaluation of nutrition in body mass index (BMI) of old age sanitarium of Shahroud on 2005. Tehran: Proceeding of old age congress; 2005. p. 11–3.
- Oh J, Kim HS, Martins D, Kim H. A study of elder abuse in Korea. *Int J Nurs Stud*. 2006;43(2):203–14.
- Burns E, Kakara R. Deaths from fall among Persons Aged ≥ 65 Years - United States, 2007–2016. *MMWR Morb Mortal Wkly Rep*. 2018;67(18):509–14.
- Amirsadri A, Soleimani H. Older adult phenomena and its outcomes in Iran. *J Hygin Health*. 2005;1(2):19–35.
- Karimi M, Elahi N. Older adult abuse in Ahwaz city and its relationship with individual and social characteristics. *Iran J Ageing*. 2008;3(7):42–7.
- Adib-Hajbaghery M, Aghahoseini S. The evaluation of disability and its related factors among the older adult population in Kashan, Iran. *BMC Public Health*. 2007;7(1):261.
- Mirzaie M, Darabi S, Babapour M. Population Aging in Iran and Rising Health Care Costs. *Salmand: Iran J Ageing*. 2017;12(2):156–69.
- Rezaei S, Manoochehri M. Comparison of mental disorders between home owner residents and nurse homes elders. *Iran J of Ageing*. 2008;3(7):16–25.
- Christian O. Incomplete remission in depression: role of psychiatric and somatic co-morbidity. *Dialogues Clin Neurosci*. 2008;10:453–60.
- Valenstein M, Taylor KK, Austin K. Benzodiazepine use among depressed patients treated in mental health setting. *Am J Psychiatry*. 2004;161:654.
- Schoevers RA, Geerlings MI, Beekman AT. Association of depression and gender with mortality in old age. Results from the Amsterdam study of the older adult (AMSTEL). *Br J Psychiatry*. 2000;177:336.
- Sadeghi M, Kazemi H. Prevalence of dementia and depression among residents of older adult nursing homes in Tehran Province. *IJPCP*. 2004;9:49–55.
- Rajabzadeh G, Ramazani A. Prevalence of depression in Kermanian geriatrics (2002). *J Rafsanjan Univ Med Sci*. 2003;3:58–66.
- Khodadady N, Sheikholslami F, Rezasmasouleh S, Yazdani M. "Rate of depression in late-life in superannuated government employed center of Guilan University of medical sciences" Persian. *J Holist Nurs Midwifery*. 2007;17:16–22.
- Sohrabi M, Zolfaghari P, Mahdizade F, Aghayan S, Ghasemian- Aghmashhadi M, Shariati Z, et al. Eval Comparison Cogn State Depress Older Adult Admitted Sanitarium Older Adult Sited Pers Home Knowledge Health. 2008; 3:27–31.
- Manzouri L, Babak A, Merasi M. The depression status of the older adult and its related factors in Isfahan in 2007. *Sija*. 2010;4.
- Nejati V, Ashayeri H. Evaluation of relationship between depression and cognitive impairment in older adult. *Sija*. 2007;1:12–8.
- Mobasher M, Moezy M. The prevalence of depression among the older adult population of Shaystegan and Jahandidegan nursing homes in Shahrekord. *J Shahrekord Univ Med Sci*. 2010;12:89–94.
- Kashfi M, Khani Jeehooni A, Farhadi S. The relationship between social and demographic factors and prevalence of depression among over 60 years old individuals, shiraz. *Iran Med J Hormozgan Univ*. 2011;14:319–25.
- Gharanjik A, Mohammadi Shahbolaghi F, Ansari G, Najafi F, Ghaderi S, Ashrafi K, et al. The prevalence of depression in older Turkmen adults in 2010. *Sija*. 2011;6:34–9.
- Ghaderi S, Sahaf R, Mohammadi Shahbolaghi F, Ansari G, Gharanjik A, Ashrafi K, et al. Prevalence of depression in older adult Kurdish community residing in Boukan, Iran (Persian). *Sija*. 2012;7:57–66.
- Miri MR, Salehiniya H, Tiyuri A, Bahlgerdi M, Taghizadeh AA. Prevalence of mental disorders and its related factors among older adult of Birjand, 2014. *J Nurs*. 2015;2(2):94–103.
- Khalili Z, Taghadosi M, Heravi-Karimooi M, Sadrollahi A, Gilasi H. Assessment of the associations of depression with elder abuse among the older adult in Kashan City. *Iran Salmand: Iran J Ageing*. 2016;10(4):8–17.
- Ashrafi K, Sahaf R, Mohammadi Shahbolaghi F, Farhadi A, Ansari G, Najafi F, et al. Prevalence of depression in Turk Azeri older adults of Iran. *J Sabzevar Univ Med Sci*. 2017;23(6):856–65.
- Sarokhani D, Parvareh M, Hasanpour Dehkordi A, Sayehmiri K, Moghimbeigi A. Prevalence of depression among Iranian older adult: systematic review and meta-analysis. *Iran J Psychiatry*. 2018;13(1):55–64.
- Sjöberg L, Karlsson B, Atti AR, Skoog I, Fratiglioni L, Wang HX. Prevalence of depression: comparisons of different depression definitions in population-based samples of older adults. *J Affect Disord*. 2017;221:123–31.
- He G, Xie JF, Zhou JD, Zhong ZQ, Qin CX, Ding SQ. Depression in left-behind older adult in rural China: prevalence and associated factors. *Geriatr Gerontol Int*. 2016;16(5):638–43.
- Papadopoulos F, Petridou E, Argyropoulou S, Kontaxakis V, Dessypris N, Anastasiou A, et al. Prevalence and correlates of depression in late life: a population based study from a rural Greek town. *Int J Geriatr Psychiatry*. 2005;20:350–7.
- Gao S, Jin Y, Unverzagt F, Liang C, Hall K, Ma F, et al. Correlates of depressive symptoms in rural older adult Chinese. *Int J Geriatr Psychiatry*. 2009;24:1358–66.
- Pérez-Rojo G, Izal M, Montorio I, Penhale B. Risk factors of elder abuse in a community dwelling Spanish sample. *Arch Gerontol Geriatr*. 2009;49(1):17–21.
- Beach SR, Schulz R, Castle NG, Rosen J. Financial exploitation and psychological mistreatment among older adults: differences between African Americans and non-African Americans in a population-based survey. *Gerontologist*. 2010;50(6):744–57.
- Dong X, Simon MA, Evans DA. Prevalence of self-neglect across gender, race, and socioeconomic status: findings from the Chicago health and aging project. *Gerontol*. 2011;58(3):258–68.
- Heravi-Karimooi M, Anooosheh M, Froughan M, Sheikhi MT, Hajizadeh E. Elder abuse by family members: an exploration in the lived experiences of older people. *Iran J Nurs Res*. 2010; 5(18):6–17.
- Legrand FD, Mille CR. The effects of 60 minutes of supervised weekly walking (in a single vs. 3–5 session format) on depressive symptoms among older women: findings from a pilot randomized trial. *Ment Health Phys Act*. 2009;2(2):71–5.
- Koshyar H, Najafi Z, Azhari A, Mazlom SR. Comparison the effect of regular physical activity and fun on the changes in rates of depression and cognitive disorders in older adult women residents of nursing homes in Mashhad. *IJOGL*. 2015;17(32):1–9.
- Lachs MS, Pillemer K. Elder abuse. *Lancet*. 2004;364(9441):1263–72.

Publisher's Note

Springer Nature remains neutral with regard to jurisdictional claims in published maps and institutional affiliations.