

EDUCATIONAL REVIEW

Open Access

CEUS LI-RADS: a pictorial review



Tommaso Vincenzo Bartolotta^{1,2*} , Maria Chiara Terranova¹, Cesare Gagliardo¹ and Adele Taibbi¹ 

Abstract

Contrast-enhanced ultrasound (CEUS) greatly improved the diagnostic accuracy of US in the detection and characterization of focal liver lesions (FLLs), and it is suggested and often included in many international guidelines as an important diagnostic tool in the imaging work-up of cirrhotic patients at risk for developing hepatocellular carcinoma (HCC). In particular, CEUS Liver Imaging Reporting and Data System (LI-RADS) provides standardized terminology, interpretation, and reporting for the diagnosis of HCC. The aim of this pictorial essay is to illustrate CEUS features of nodules discovered at US in cirrhotic liver according to LI-RADS categorization.

Keywords: Contrast-enhanced ultrasonography, Hepatocellular carcinoma, Cholangiocarcinoma, Liver tumor characterization, Cirrhosis

Key points

- CEUS is a safe, robust, and cost-effective imaging modality
- CEUS allows in real time a confident characterization of hepatocellular carcinoma (HCC)
- CEUS LI-RADS provides standardized terminology, interpretation, and reporting for the diagnosis of HCC

Introduction

Worldwide HCC is reported to be the sixth most common tumor and the fourth cause of death related to cancer [1].

Cirrhotic patients are particularly considered a high-risk group for the onset of HCC, prompting several international scientific societies to publish guidelines recommending surveillance of adults with cirrhosis on the evidence of improved overall survival [2–4]. The recommended imaging surveillance tool for early detection of HCC is ultrasound (US), usually performed every 6 months [2, 3]. Once a new nodule suspect for HCC is discovered in the liver of a cirrhotic patient, further imaging work-up with either computed tomography (CT) or magnetic resonance imaging (MRI) is usually recommended [2, 3]. Both techniques require the intravenous

administration of contrast media and difficulties may arise in patients with severe renal failure or allergies [5, 6].

Contrast-enhanced US (CEUS) allows to assess non-invasively the contrast enhancement patterns of HCC, without the use of ionizing radiation and with a much higher temporal resolution than CT and MRI [7–10]. This unique feature of CEUS virtually eliminates the possibility of image acquisition mistiming, especially in the arterial phase [11]. Several studies have reported the improvement in diagnostic accuracy of CEUS in the detection and characterization of FLLs, including HCC [8–11]. CEUS has been also proved useful in the guidance and response assessment of therapeutic procedures [12–18].

CEUS examination is performed by injecting intravenously microbubble-based contrast agents (USCAs) consisting of flexible shells (e.g., phospholipids, liposomes) presenting a radius ranging from 1 to 10 μm , containing low solubility gases (e.g., perfluoropropane, perfluorocarbon, or sulphur hexafluoride) [19, 20]. USCAs microbubbles pass through the lung capillary bed and they remain confined within the intravascular space. Although some USCAs may present a post-vascular phase in the liver and spleen, this phase is currently not taken in account for the characterization of HCC [21]. Approximately 20 min after the injection, the USCAs are completely eliminated: the gas diffuses into the blood and then exhaled via the pulmonary route, while the

* Correspondence: tommasovincenzo.bartolotta@unipa.it

¹BiND Department: Biomedicine, Neuroscience and Advanced Diagnostic, University of Palermo, Via Del Vespro, 129 90127 Palermo, Italy

²Department of Radiology, Fondazione Istituto Giuseppe Giglio Ct.da Pietrapollastra, Via Pisciotto, 90015 Cefalù (Palermo), Italy

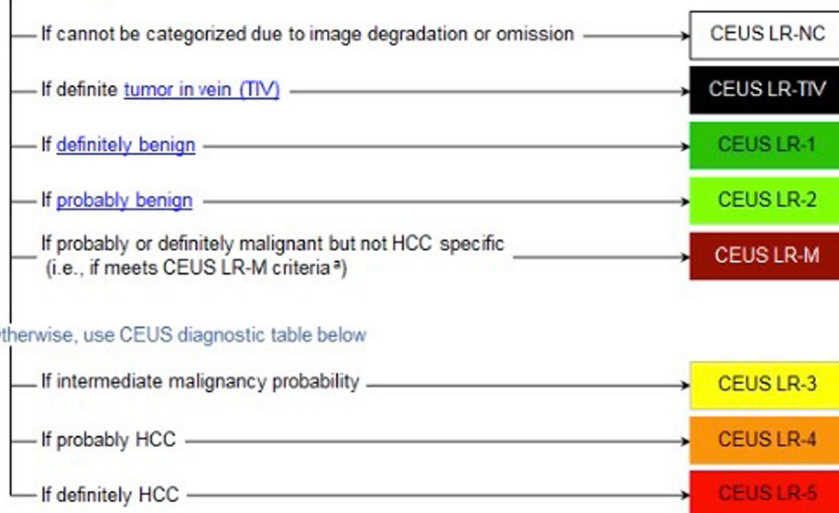
Table 1 Main indications for CEUS LI-RADS in patients at high risk for HCC

- Assess nodules ≥ 10 mm detected on surveillance US.
- Assess LR-3, LR-4, and LR-M observations detected on prior CT or MRI.
- Detect APHE when mistiming is suspected as the reason for its absence on prior CT or MRI.
- Assess biopsied observations with inconclusive histology.
- Guide biopsy or treatment of observations difficult to visualize with precontrast US.
- Help select appropriate observation(s) or observation component(s) for biopsy.
- Monitor changes in enhancement pattern over time for selected CEUS LR-3 or CEUS LR-4 observations.
- Differentiate tumor in vein ("tumor thrombus") from bland thrombus.



CEUS LI-RADS® v2017 CORE (For CEUS with Pure Blood Pool Agents)

Untreated observation visible on precontrast US and without pathologic proof in patient at high risk for HCC



CEUS Diagnostic Table

Arterial phase hyperenhancement (APHE)	No APHE		APHE (not rim ^b , not peripheral discontinuous globular ^c)	
	< 20	≥ 20	< 10	≥ 10
Nodule size (mm)				
No washout of any type	CEUS LR-3	CEUS LR-3	CEUS LR-3	CEUS LR-4
Late and mild washout	CEUS LR-3	CEUS LR-4	CEUS LR-4	CEUS LR-5

a. CEUS LR-M criteria – any of following:

- rim APHE OR
- early (< 60 s) washout OR
- marked washout

b. rim APHE indicates CEUS LR-M

c. peripheral discontinuous globular indicates hemangioma (CEUS LR-1)

If unsure about the presence of any major feature: characterize that feature as absent

Fig. 1 ACR CEUS LI-RADS categorization and diagnostic algorithm

Table 2 CEUS LI-RADS categories

Diagnostic categories	Clinical significance	Imaging workup options		
		Return to routine surveillance	Alternative diagnostic imaging (i.e., CT or MRI)	Repeat CEUS
CEUS LR-NC	Not categorizable (due to image degradation or omission)	–	≤ 3 months*	≤ 3 months**
CEUS LR-1	Definitely benign	6 months**	–	–
CEUS LR-2	Probably benign	6 months**	–	≤ 6 months*
CEUS LR-3	Intermediate probability of malignancy	–	≤ 6 months**	≤ 6 months*
CEUS LR-4	Probably HCC	Multidisciplinary discussion may be needed for consensus management. If neither biopsy nor treatment is planned: repeat or alternative diagnostic imaging in ≤ 3 months		
CEUS LR-5	Definitely HCC	Diagnosis of HCC. Multidisciplinary discussion for consensus management.		
CEUS LR-M	Probably or definitely malignant, not necessarily HCC	Multidisciplinary discussion for consensus management. May include alternative or repeat imaging, biopsy, or treatment		
CEUS LR-TIV	Tumor in vein	Multidisciplinary discussion for consensus management. May include biopsy or biomarker correlation to determine etiology of TIV: HCC, ICC, other.		

**Preferred option in most cases

*Reasonable alternative option. Not recommended

shell components are metabolized by the liver or filtered by the kidney [22].

USCAs are generally safe and well tolerated with a safety profile better than or similar to CT and MRI contrast media [23]. They are not nephrotoxic and may be used even in patients with severe renal failure, renal obstruction, or chronic obstructive pulmonary disease. Hence, there is no need of laboratory tests for assessing renal function before administering USCAs.

Currently, in many clinical settings, CEUS is recommended as pivotal imaging tool in the diagnostic workup of liver FLLs, including HCC, also considering its favorable cost-benefit ratio when compared with cross-sectional imaging techniques [24–27]. In a recent meta-analysis, CEUS showed excellent diagnostic accuracy in differentiating malignant from benign FLLs with pooled

sensitivity of 0.92, pooled specificity of 0.87, and diagnostic odds ratio of 104.20 respectively [21].

The CEUS cases presented in this paper were acquired by means of various ultrasound equipments: RS80A and RS85, (Samsung Medison, Co. Ltd.), iU22 (Philips Ultrasound, Bothell, Wash, USA), and MyLab Twice (Esaote, Genova, Italy). All of these units were provided with multifrequency convex array probes and contrast-specific imaging software.

CEUS LI-RADS

CEUS LI-RADS system

Firstly released in 2016 by the ACR and then revised in 2017, contrast enhanced ultrasound (CEUS) Liver Imaging Reporting and Data System (LI-RADS) is a standardized system for technique, interpretation, reporting,

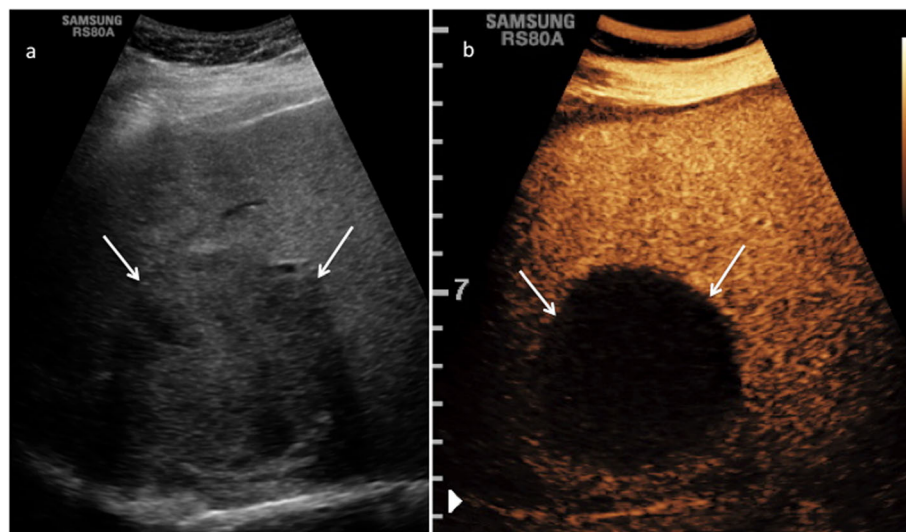


Fig. 2 CEUS LI-RADS 1 (definitely benign). Complex cyst in a 60-year-old woman with chronic hepatitis B viral infection. Baseline US image (a) shows a heterogeneous and moderately hypoechoic lesion sized 6.2 cm in the segment VI–VII (arrows). At CEUS (b), the lesion shows a complete lack of enhancement throughout the vascular phases (arrows)

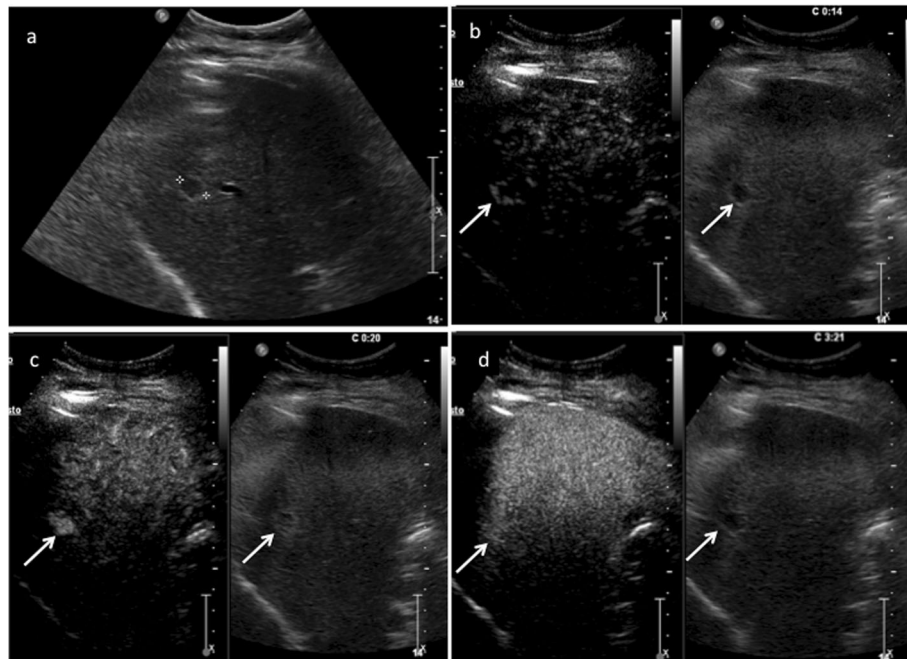


Fig. 3 CEUS LI-RADS 1 (definitely benign). Hemangioma in a 49-year-old woman with chronic hepatitis B viral infection. Baseline US image (a) shows a hypoechoic lesion surrounded by a tiny peripheral hyperechoic rim sized 1.3 cm in the segment VII (calipers). CEUS in the early arterial phase (b) depicts peripheral globular enhancement (arrows) followed by a complete centripetal fill-in in the late arterial phase (c) (arrows). The lesion shows sustained contrast-enhancement in the extended portal-venous phase (d) (arrows)

and data collection for CEUS exams in patients at risk for developing HCC [28].

CEUS LI-RADS lexicon integrates with the previously released CT/MRI LI-RADS lexicons, and it is intended to allow the radiologists to (1) use consistent terminology, (2) reduce variability and mistakes in imaging interpretation, (3) promote communication with referring

clinicians, and (4) facilitate research and quality assurance [29].

Noteworthy, although FLL characterization features using CEUS are similar to those of multiphasic CT and/or MRI, there are still important differences between these techniques, regarding both features and characterization algorithm [30]. CEUS LI-RADS is

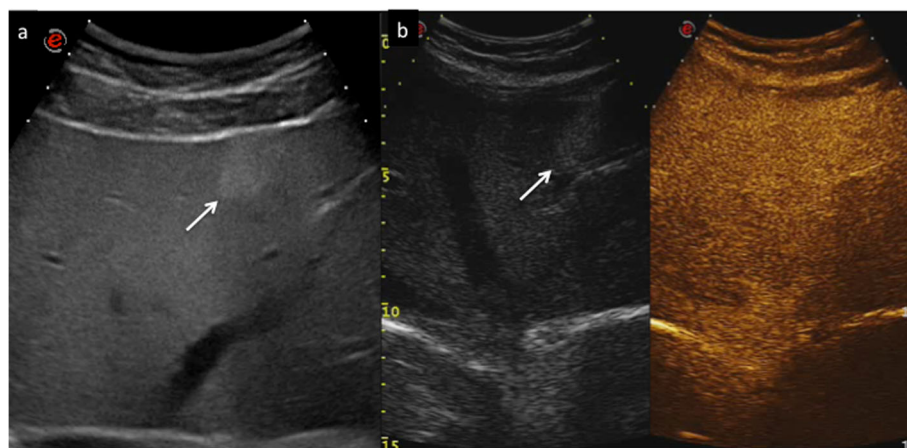


Fig. 4 CEUS LI-RADS 2 (probably benign). Atypically located area of hypersteatosis in a 47-year-old woman with chronic hepatitis B viral infection. Baseline US image (a) shows a hyperechoic oval-shaped area sized 2.8 cm in the segment IV in a fatty liver (arrow). At CEUS in the extended portal venous phase (b), the area is constantly isoechoic with respect to the surrounding liver parenchyma, as well as throughout the vascular study (arrow)

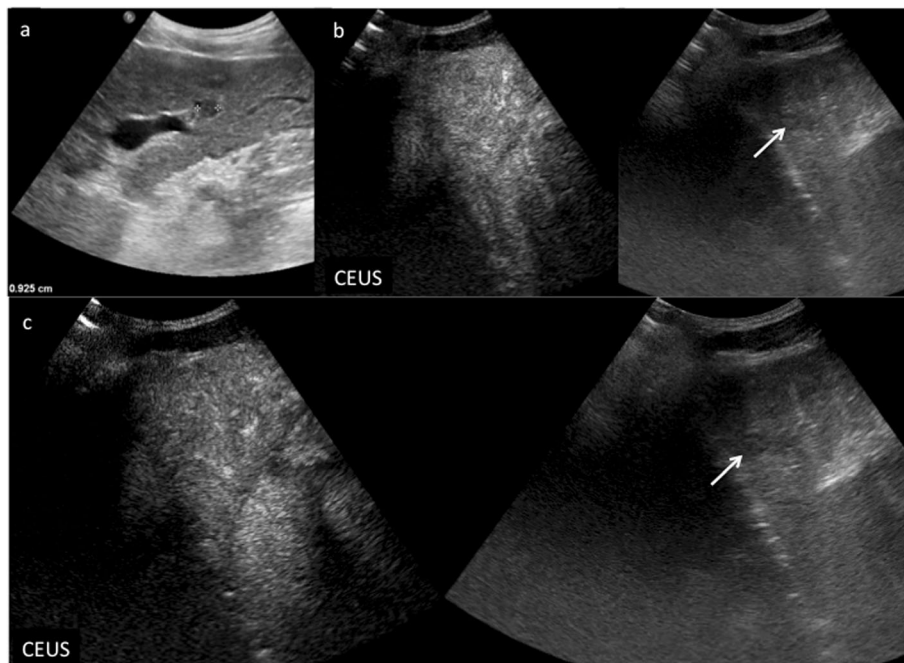


Fig. 5 CEUS LI-RADS 2 (probably benign). Regenerative nodule in a 68-year-old woman with virus B-related cirrhosis. Baseline US image (a) shows a small hypoechoic lesion sized 0.9 cm in the segment III (calipers). At CEUS, the nodule is constantly isoechoic with respect to the surrounding liver parenchyma during the arterial (a) and extended portal venous phase (b, c)

intended for the use with purely intravascular microbubble contrast agents—such as Lumason® (in USA)/SonoVue® (outside USA) and Definity® (in USA, Canada)/Luminity® (outside USA, Canada)—which affects washout and “capsule” characterization [11, 31, 32]. Actually, CEUS washout is true washout. On the other hands, CEUS does not depict “capsule”; hence, “capsule” is not a CEUS major feature. CEUS usually does not depict vascular pseudo-lesions such as arterioportal shunts, a frequent cause of diagnostic confusion on CT and MRI: as consequence, any CEUS enhancing observation is a true lesion [33].

Of note, the use of a combined blood pool and Kupffer cell agent (Sonazoid®) is not contemplated in FLL characterization using CEUS LI-RADS [28].

When is CEUS LI-RADS categorization system indicated?

CEUS LI-RADS must be applied only in patients at high risk for developing HCC (cirrhosis, chronic hepatitis B, current or prior HCC, adult liver transplant candidates, and recipients after transplant). CEUS LI-RADS must not be applied to patients without the abovementioned risk factors or < 18 years old. Table 1 lists the main indications of CEUS LI-RADS in patients at high risk for HCC [28].

CEUS LI-RADS reporting and categories

According to CEUS LI-RADS criteria, the two major features of HCC are (1) arterial phase enhancement (not

rim or globular peripheral) and (2) washout. Not surprisingly, CEUS sensitivity in the observation of arterial hypervascularity from nodules in liver cirrhosis has been showed to be significantly higher than that of CT/MRI [34–36].

Washout

Washout is defined as a reduction in enhancement in whole or in part in comparison with the liver resulting in hypoenhancement. This latter may begin during or after arterial phase. Furthermore, CEUS characterization of washout requires assessment of its onset (late vs. early) and degree (mild vs. marked), not just its presence. Actually, early (< 60 s) and/or marked washout is a major feature for LR-M [37]. On the other hand, late (\geq 60 s) and mild washout is a major feature for HCC [38].

The degree of washout is defined “mild” when the nodule enhances less than liver, but not some enhancement persists. If this persistent enhancement disappears after 2 min, the degree of washout is still considered mild, even if the nodule eventually becomes “punched-out.” On the other hand, the degree of washout is defined “marked” when the nodule lacks of any contrast enhancement within 2 min after contrast injection: the observation appears black or “punched out.”

The ancillary imaging features can be taken into account for category adjustment when category classification is not definite and, as stated by ACR, they can be

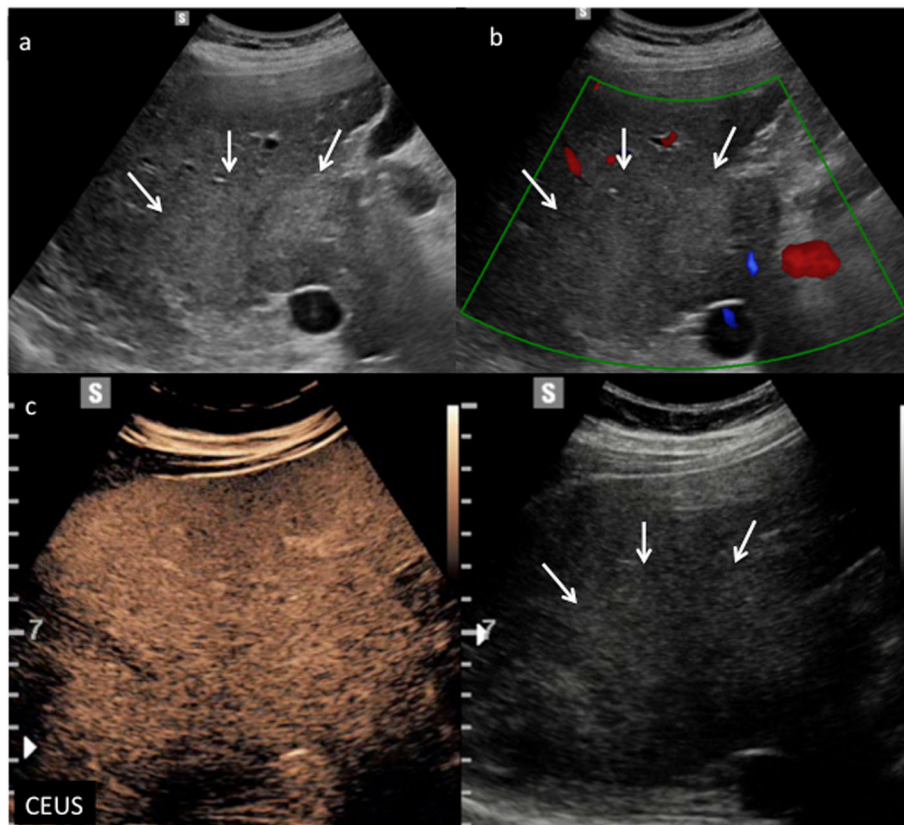


Fig. 6 CEUS LI-RADS 2 (probably benign). Non mass-like area in a 57-year-old man with virus C-related cirrhosis. Baseline US image (a) shows a slightly hyperechoic area with indistinct margins sized 7 cm in the segment V–VI (arrows). The area does not show any vascular signal at color-Doppler (b) (arrows). At CEUS (c), it appears constantly isoechoic with respect to the surrounding liver parenchyma throughout the vascular study (arrows)

used to upgrade or downgrade unclear FLLs categories. Presence of ancillary features favoring malignancy (size growth, mosaic, and nodule in nodule architecture) can only upgrade by one category (except LR-4 to LR-5) unclear lesions. On the other hand, presence of ancillary features favoring benignity (size stability or size reduction) can only downgrade by one category unclear lesions. When conflicting, it is recommended not to use them to adjust category.

The presence of patent veins or the presence of thrombosis must be assessed as well [28]. Currently, there are eight CEUS LI-RADS diagnostic categories with related imaging work-up suggestions (Fig. 1). In particular, categories from 1 to 5 include nodules with increasing probability of malignancy. Of note, a one-to-one correspondence between such categories and histologic progression or grade of cirrhosis-associated nodules does not exist [39]. As consequence, no cirrhotic nodule is included in LR-1 and many HCCs might be categorized LR-4 or lower. The LR categorization impact on the imaging workup options as well, as described in Table 2.

How to apply CEUS LI-RADS system?

If after the injection of microbubble contrast agent, any observation results not assessable due to image degradation or omission, CEUS LR-NC (not categorizable) must be used. In this case, information about the cause technical limitations or artifacts should be reported and further work-up advice should be also provided, such as repeat CEUS or perform alternative imaging modality (i.e., CT and/or MRI) within 3 months (Table 2).

CEUS LR-1 and 2 categories include definitely and probably benign observations, respectively: in particular, LR-1 includes three main observation types: (1) cyst, (2) hemangioma, (3) fat deposition/sparing. A liver cyst is defined, as elsewhere in the body, as an anechoic lesion with increased posterior acoustic through transmission showing no contrast enhancement in any phase. Although simple cysts are easily detected and characterized even without the use of any contrast agent, CEUS may be of particular value in the characterization of more complex appearing lesions on B-mode US, showing their complete avascularity (Fig. 2) [8, 15]. Hemangioma is often recognized as a hyperechoic lesion, but it may

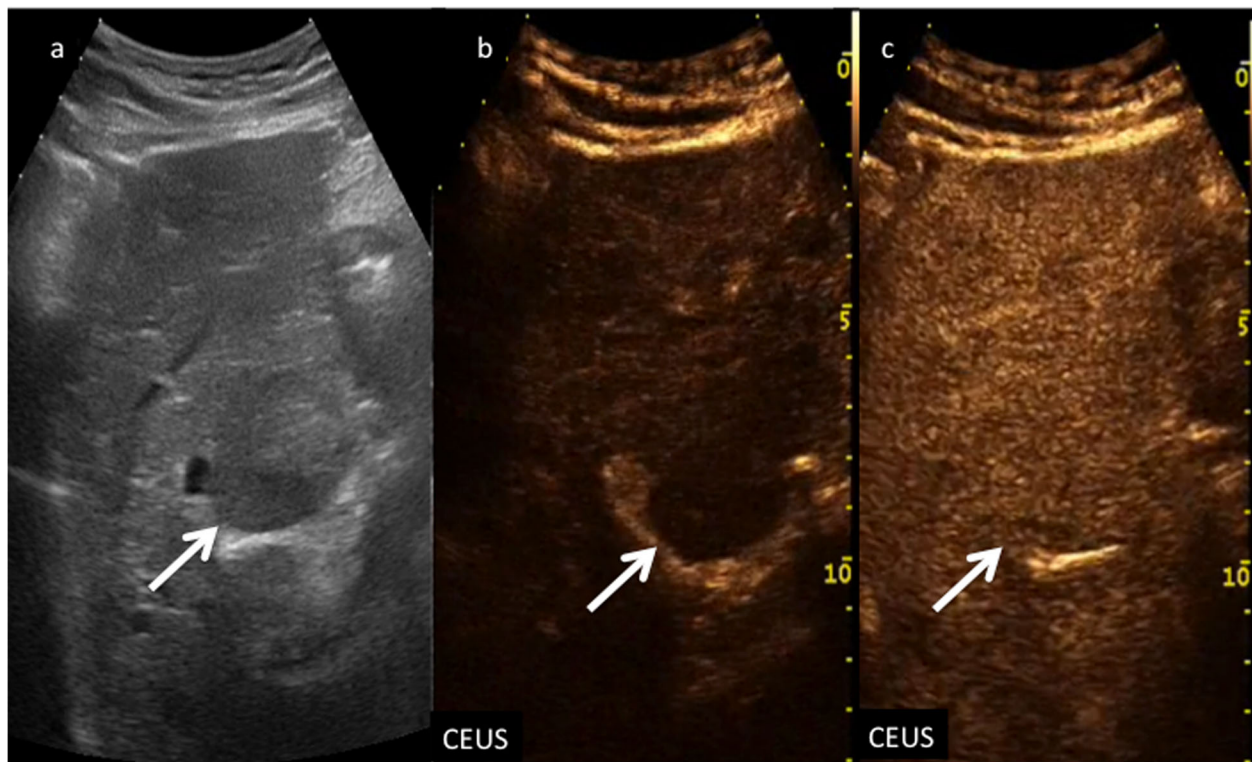


Fig. 7 CEUS LI-RADS 3 (intermediate malignancy probability). Nodule in a 74-year-old man with virus B-related cirrhosis. Baseline US image (a) shows a slightly hypoechoic lesion sized 3 cm in the segment IV (arrow). At CEUS, the nodule appears moderately hypoechoic during the arterial phase (b) and isoechoic to the adjacent liver parenchyma in the extended portal venous (c) phase (arrows)

present variable echogenicity on B-mode US [40]. CEUS easily depicts a typical peripheral globular enhancement in arterial phase followed by progressive centripetal fill-in and iso- or hyperenhancement in portal venous and late phase (Fig. 3) [41, 42]. The filling may be complete or partial depending on lesion size and/or the presence of mixoid or fibrotic degeneration [43]. Hepatic fat deposition/sparing is defined as nonmasslike, nonspherical, hyper/hypoechoic area of parenchyma in a characteristic location for fat deposition/sparing. Characteristic areas include liver parenchyma nearby the gallbladder and anterior to the right portal vein in segment 4. Hepatic fat deposition/sparing shows isoenhancement to the liver in all phases [44–46]. If the hyper/hypoechoic area is not in a characteristic location for fat deposition/sparing, categorize as CEUS LR-2 (see below) (Fig. 4). In case of detection of isoenhancing nodule at CEUS, observation should undergo CEUS LR-2 classification if solid nodule < 10 mm (Fig. 5), whereas if isoenhancing nodule is ≥ 10 mm, it should be categorized as CEUS LR-3 (see below). On the other hand, LR-3 nodules with interval size stability for more than 2 years can return to LR-2. These small nodules are probably typical regenerative or low-grade dysplastic nodules [47]. Any isoenhancing observation of any size, nonmasslike and without typical

appearance of hepatic fat deposition or fat sparing, should be also categorized as LR-2 (Fig. 6).

Noteworthy, the CEUS enhancement features for HCC, hepatocellular adenoma (HCA,) and focal nodular hyperplasia (FNH) may overlap [47–54]. Hence, on a precautionary basis, in the clinical setting of patients at risk for HCC, nodules with CEUS feature of FNH and HCA should not be categorized as CEUS LI-RADS 1 or CEUS LI-RADS 2.

Any nodule not showing any APHE nor washout must be categorized as CEUS LR-3 regardless of size (Fig. 7). A nodule smaller than 2 cm, without any APHE but showing late and mild washout, should be also assigned to CEUS LR-3 category. On the other hand, any nodule larger than 2 cm, without any APHE but showing late and mild washout, must be assigned to CEUS LR-4 category.

Nodules showing APHE (not rim or peripheral globular) without washout of any type should be categorized, depending on size, as CEUS LR-3 (when the nodule is smaller than 10 mm) or CEUS LR-4 (≥ 10 mm) respectively (Fig. 8). At the same time, nodules showing APHE (not rim or peripheral globular) but presenting with late and mild washout should be categorized, depending on size, as CEUS LR-4 (when the

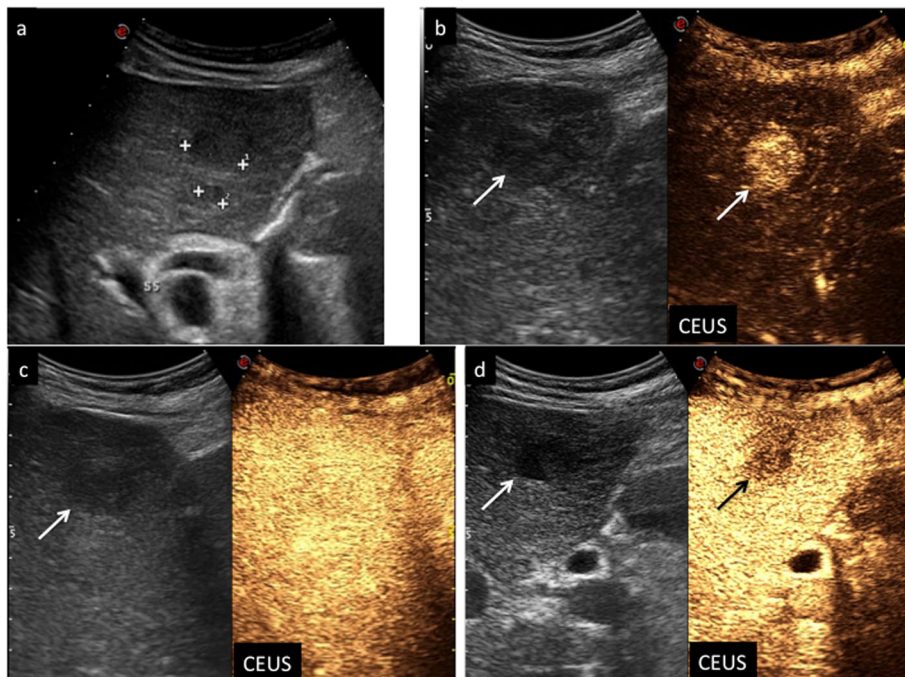


Fig. 9 CEUS LI-RADS 5 (definitely HCC). Nodule in a 72-year-old man with virus B-related cirrhosis. Baseline US image (a) shows two moderately hypoechoic lesions sized, respectively, 2.2 cm and 0.7 cm in the segment V (calipers). At CEUS, the largest one is markedly hypervascular during the arterial phase (b) (arrows), becoming isoechoic 45 s after contrast medium injection (c) (arrow) and showing moderate wash-out 120 s after contrast medium injection (d) (arrows)

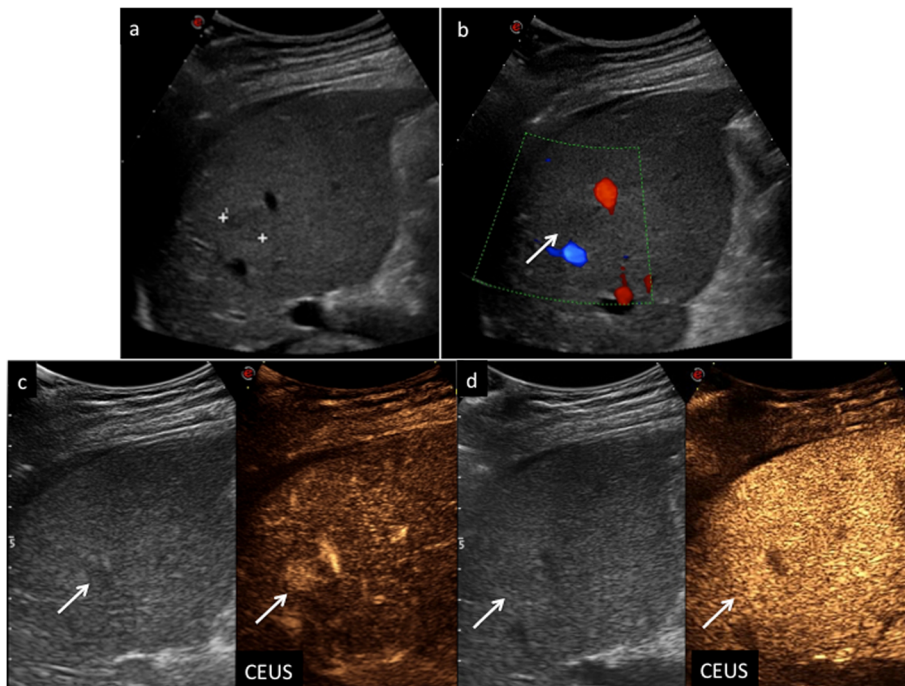


Fig. 8 CEUS LI-RADS 4 (probably HCC). Nodule in a 52-year-old woman with virus C-related cirrhosis. Baseline US image (a) shows a slightly hypoechoic lesion sized 1.5 cm in the segment VIII (calipers). No vascular signal is detectable at color-Doppler (b) (arrow). At CEUS, the nodule is highly hypervascular during the arterial phase (c) (arrow) and isoechoic in the extended portal venous phase (d) (arrow)

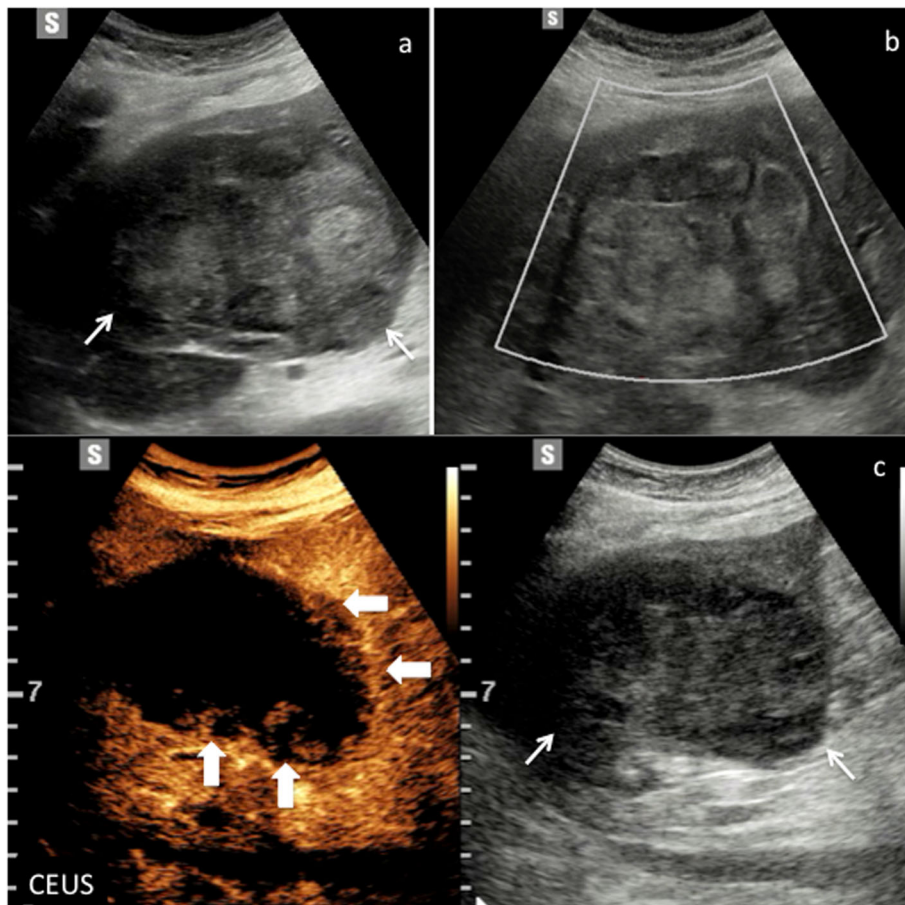


Fig. 10 CEUS LI-RADS M (probably or definitely malignant but not HCC specific) nodule. Cholangiocarcinoma in a 87-year-old man with virus B-related cirrhosis. Baseline US image shows a markedly heterogeneous lesion sized 8.5 cm in the segment VI (a) (arrows). No vascular signal is detectable at color-Doppler (b). At CEUS (c), the nodule shows rim enhancement surrounding a constantly avascular area (arrows)

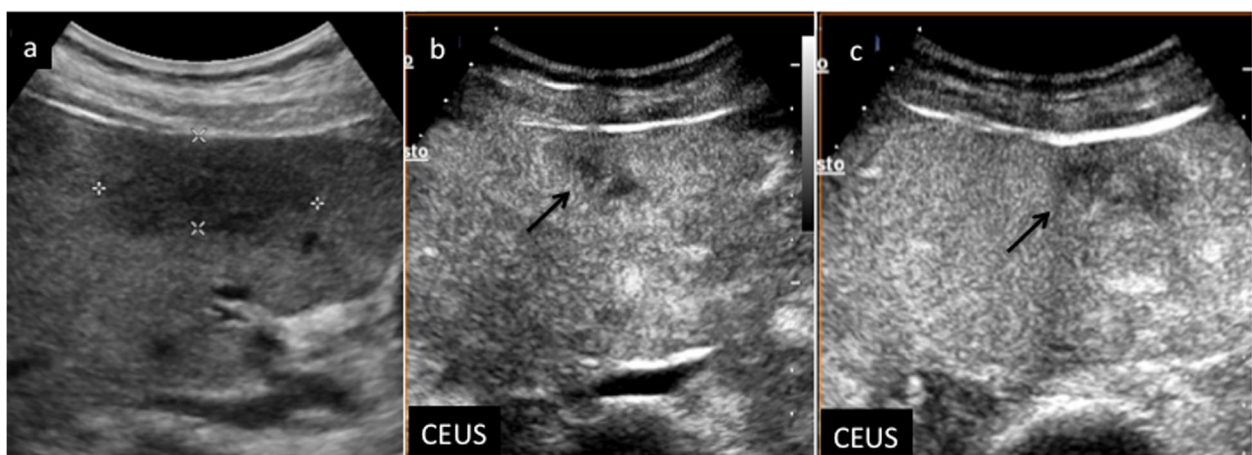


Fig. 11 CEUS LI-RADS M (probably or definitely malignant but not HCC specific) nodule. Metastasis in a 32-year-old woman with virus B-related cirrhosis. Baseline US image (a) shows a hypoechoic lesion with not well-defined margins sized 5 cm in the segment IV (calipers). At CEUS, the lesion is heterogeneously vascularized during the arterial phase (b) (arrow) showing early wash-out: 34 s after contrast medium injection (c) (arrow)

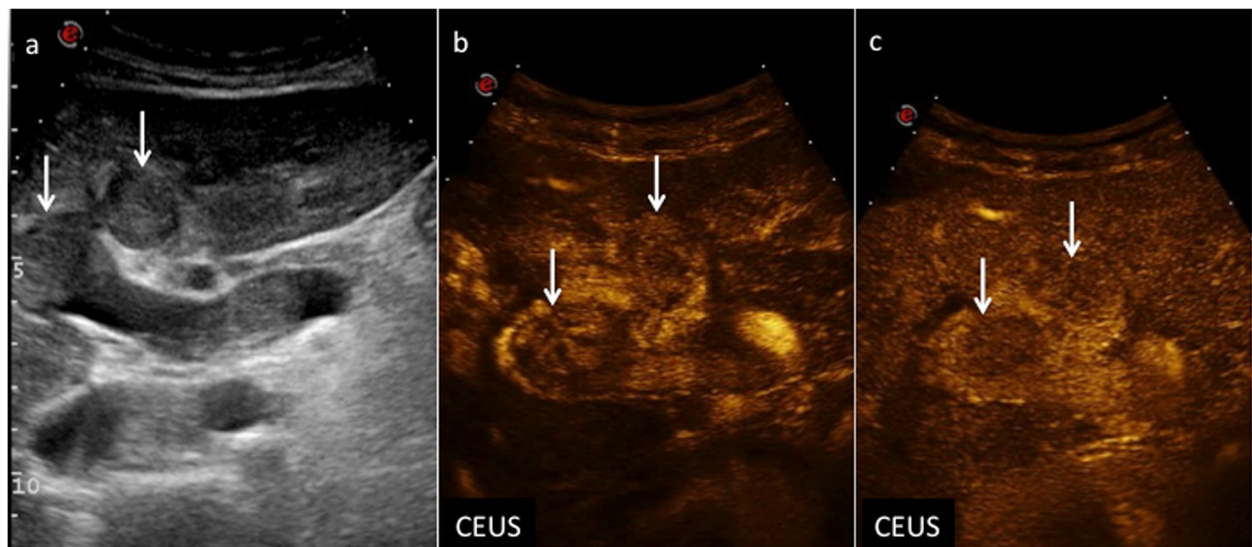


Fig. 12 CEUS LI-RADS TIV (tumor in vein). Neoplastic thrombosis in a 84-year-old man with virus B-related cirrhosis. Baseline US image shows (a) multiple thrombi in the lumen of portal vein (arrows). At CEUS, marked enhancement is evident in their context during the early arterial phase (b) (arrows), followed by a clear-cut wash-out in the extended portal venous phase (c) (arrows)

nodule is smaller than 10 mm) or CEUS LR-5 (≥ 10 mm) respectively (Fig. 9).

In LR-M category, any nodule of any size should be included, which may show any of the following criteria [55–60]:

1. Rim APHE: “ring-like” APHE in which enhancement is most evident at the periphery of the nodule (Fig. 10);

2. Early (< 60 s) washout: temporally defined subtype of washout in which onset is within 60 s from contrast injection. Usually marked in degree (Fig. 11);
3. Marked washout.

At CEUS, the vast majority of malignant nodules typically show washout, including liver metastases, intrahepatic cholangiocarcinoma (ICC), and other tumors with

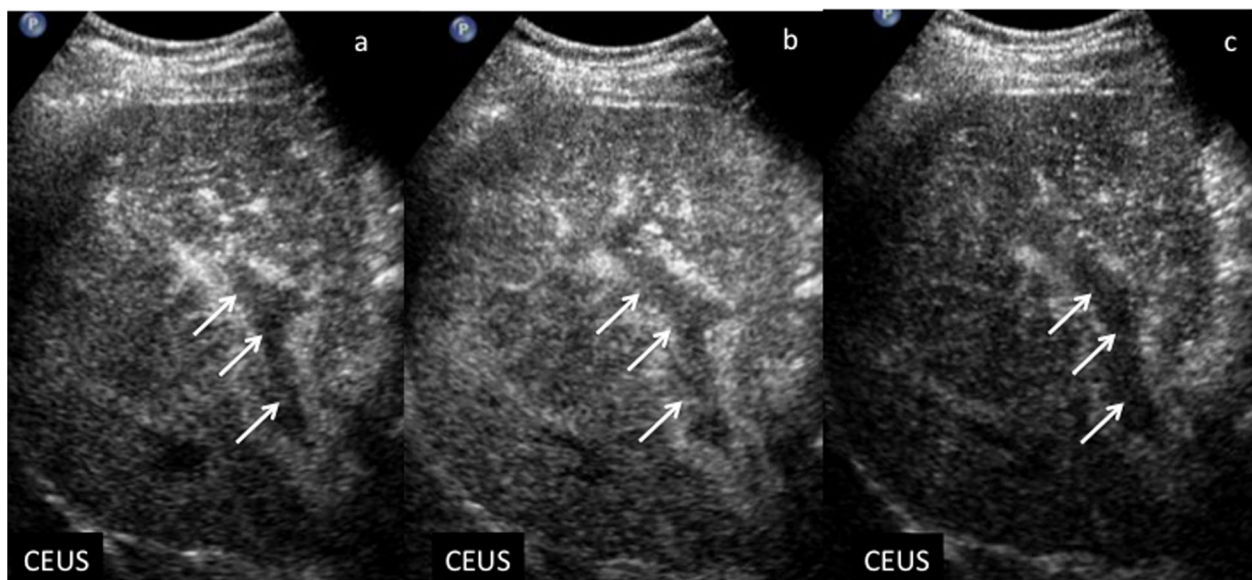


Fig. 13 Non-neoplastic thrombosis in a 62-year-old man with virus B-related cirrhosis. At CEUS, no enhancement is appreciable in the context of the right branch of portal vein during the arterial (a), portal venous (b), and late (c) phases, respectively (arrows)

fibrotic component which may show delayed central enhancement on CT or MRI [61–65]. Hence, to maintain specificity for HCC, CEUS characterization of washout requires assessment of its “onset” and “degree,” not just its presence. As consequence, observations with late and mild washout may be categorized as CEUS LR-3, LR-4, or LR-5. Nodules with early or marked washout should be categorized LR-M. ICC may be typically included in this category in a cirrhotic liver.

Finally CEUS LR-TIV (definite tumor in vein) includes observation of enhancing tissue within a vein, independently from the detection of a coexisting liver tumor. Tumoral invasion of veins must be differentiated from bland thrombus [66]. To this purpose, the arrival time of microbubble contrast agent to the vein helps to distinguish tumor in vein from bland thrombus [67]:

- Early arrival time (~ same time as contrast enhancement of hepatic artery): favors tumor in vein (Fig. 12).
- Arrival time of several seconds (~ 10) after contrast enhancement of hepatic artery: favors portal flow in patent portion of non-occlusive/recanalized bland thrombus.

Bland thrombus shows lack of vascularization (Fig. 13). The proximity with any liver mass may help in etiology definition. In particular, if TIV is contiguous or associated with any LI-RADS 4 or 5 lesions, tumor in vein is probably or definitely attributable to HCC, whereas if TIV is near LR-M, it is probably due to non-HCC malignancy. If no masses are detected, etiology is undetermined.

HCC and CEUS LI-RADS: final considerations

CEUS is currently recommended as an adjunct tool in the imaging work-up of HCC, either in the LI-RADS lexicon or in other international guidelines, with encouraging results also in terms of cost-benefit analysis [24, 68, 69]. Of note, there is still lack of consensus among different Scientific Societies regarding the precise role of CEUS in the diagnostic algorithm for the characterization of HCC. On one hand, various scientific societies, including ACR and Japanese, Italian, German, and British, suggest the use of CEUS in the diagnostic algorithm of HCC in their guidelines (www.webaisf.org, www.drg.de, and www.nice.org.uk, respectively). In the latest version of European Association for Study of Liver (EASL) guidelines on the management of HCC, CEUS is also considered a diagnostic tool for HCC as well as CT and MRI [68]. On the other hand, other Korean and American Societies, such as the Korean Liver Cancer Study Group, the American Association for the Study of Liver Diseases, and the Organ Procurement and

Transplantation Network, suggest the use of CT and MR only [68, 69]. Further refinement may allow a desirable and better uniformity in international guidelines.

Abbreviations

ACR: American College of Radiology; AP: Arterial phase; APHE: Arterial phase hyperenhancement; CEUS: Contrast-enhanced ultrasound; CT: Computed tomography; FFLs: Focal liver lesions; FNH: Focal nodular hyperplasia; HA: Hepatocellular adenoma; HBV: Hepatitis B virus; HCC: Hepatocellular carcinoma; HCV: Hepatitis C virus; ICC: Intrahepatic cholangiocarcinoma; LI-RADS: Liver Imaging Reporting and Data System; LP: Late phase; MDD: Multidisciplinary discussion; MRI: Magnetic resonance imaging; NAFLD: Nonalcoholic fatty liver disease; PVP: Portal venous phase; US: Ultrasound; USCA: US contrast agents

Authors' contributions

All authors read and approved the final manuscript.

Funding

None.

Availability of data and materials

Not applicable.

Ethics approval and consent to participate

Not applicable.

Consent for publication

Not applicable.

Competing interests

One author (TVB) is a scientific advisor for Samsung.

Received: 7 July 2019 Accepted: 21 November 2019

Published online: 04 February 2020

References

1. World Health organization, International Agency for Research on Cancer, Global Cancer Observatory Cancer Today – IARC, Lyon, France, 2018 available via <http://gco.iarc.fr/today/data/factsheets/cancers/11-Liver-fact-sheet.pdf>. Last accessed 8 Jan 2019
2. European Association for the Study of the Liver (2018) EASL clinical practice guidelines: management of hepatocellular carcinoma. European Association for the Study of the Liver. *J Hepatol* 69(1):182–236
3. Heimbach JK, Kulik LM, Finn RS et al (2018) AASLD guidelines for the treatment of hepatocellular carcinoma. *Hepatology* 67:358–380
4. Omata M, Cheng AL, Kokudo N et al (2017) Asia-Pacific clinical practice guidelines on the management of hepatocellular carcinoma: a 2017 update. *Hepatol Int* 11:317–370
5. Thomsen HS (2009) Nephrogenic systemic fibrosis: history and epidemiology. *Radiol Clin North Am* 47:827–831
6. Tao SM, Wichmann JL, Schoepf UJ, Fuller SR, Lu GM, Zhang LJ (2016) Contrast-induced nephropathy in CT: incidence, risk factors and strategies for prevention. *Eur Radiol* 26:3310–3318
7. Bartolotta TV, Taibbi A, Midiri M, La Grutta L, De Maria M, Lagalla R (2010) Characterisation of focal liver lesions undetermined at grey-scale US: contrast-enhanced US versus 64-row MDCT and MRI with liver-specific contrast agent. *Radiol Med* 115(5):714–731
8. Bartolotta TV, Taibbi A, Midiri M, Lagalla R (2009) Focal liver lesions: contrast-enhanced ultrasound. *Abdom Imaging* 34(2):193–209
9. Bartolotta TV, Vernuccio F, Taibbi A, Lagalla R (2016) Contrast-enhanced ultrasound in focal liver lesions: where do we stand? *Semin Ultrasound CT MR* 37(6):573–586
10. Wilson SR, Burns PN (2010) Microbubble-enhanced US in body imaging: what role? *Radiology* 257(1):24–39
11. Wilson SR, Kim TK, Jang HJ, Burns PN (2007) Enhancement patterns of focal liver masses: discordance between contrast-enhanced sonography and contrast-enhanced CT and MRI. *AJR Am J Roentgenol* 189(1):W7–W12
12. Mauri G, Porazzi E, Cova L et al (2014) Intraprocedural contrast-enhanced ultrasound (CEUS) in liver percutaneous radiofrequency ablation: clinical impact and health technology assessment. *Insights Imaging* 5(2):209–216

13. Seinstra BA, van Delden OM, van Erpecum KJ, van Hillegersberg R, Willem PT, van den Bosch MA (2010) Minimally invasive image-guided therapy for inoperable hepatocellular carcinoma: what is the evidence today? *Insights Imaging* 1(3):167–181
14. Hussein RS, Tantawy W, Abbas YA (2019) MRI assessment of hepatocellular carcinoma after locoregional therapy. *Insights Imaging* 10(1):8. <https://doi.org/10.1186/s13244-019-0690-1>
15. Bartolotta TV, Midiri M, Quaia E et al (2005) Benign focal liver lesions: spectrum of findings on SonoVue-enhanced pulse-inversion ultrasonography. *Eur Radiol* 15(8):1643–1649
16. Bartolotta TV, Taibbi A, Midiri M, De Maria M (2008) Hepatocellular cancer response to radiofrequency tumor ablation: contrast-enhanced ultrasound. *Abdom Imaging* 33:501–551
17. Bartolotta TV, Taibbi A, Matranga D, Midiri M, Lagalla R (2015) 3D versus 2D contrast-enhanced sonography in the evaluation of therapeutic response of hepatocellular carcinoma after locoregional therapies: preliminary findings. *Radiol Med* 120(8):695–704
18. Bartolotta TV, Taibbi A, Matranga D et al (2012) Incidence of new foci of hepatocellular carcinoma after radiofrequency ablation: role of multidetector CT. *Radiol Med* 117(5):739–748
19. Dietrich CF, Averkiou M, Nielsen MB et al (2018) How to perform contrast-enhanced ultrasound (CEUS). *Ultrasound Int Open* 4(01):E2–15
20. Jo PC, Jang HJ, Burns PN, Burak KW, Kim TK, Wilson SR (2017) Integration of contrast-enhanced US into a multimodality approach to imaging of nodules in a cirrhotic liver: how I do it. *Radiology* 282(2):317–331
21. Wu M, Li L, Wang J et al (2018) Contrast-enhanced US for characterization of focal liver lesions: a comprehensive meta-analysis. *Eur Radiol* 28(5):2077–2088
22. Quaia E (2007) Microbubble ultrasound contrast agents: an update. *Eur Radiol* 17:1995–2008
23. Piscaglia F, Bolondi L (2006) The safety of SonoVue in abdominal applications: retrospective analysis of 23188 investigations. *Ultrasound Med Biol* 32:1369–1375
24. Westwood M, Joore M, Grutters J et al (2013) Contrast-enhanced ultrasound using SonoVue® (sulphur hexafluoride microbubbles) compared with contrast-enhanced computed tomography and contrast-enhanced magnetic resonance imaging for the characterisation of focal liver lesions and detection of liver metastases: a systematic review and cost-effectiveness analysis. *Health Technol Assess* 17(16):1–243. <https://doi.org/10.3310/hta17160>
25. Lorusso A, Quaia E, Poillucci G, Stacul F, Grisi G, Cova MA (2015) Activity-based cost analysis of contrast-enhanced ultrasonography (CEUS) related to the diagnostic impact in focal liver lesion characterisation. *Insights Imaging* 6(4):499–508
26. Bartolotta TV, Taibbi A, Midiri M, Matranga D, Solbiati L, Lagalla R (2011) Indeterminate focal liver lesions incidentally discovered at gray-scale US: role of contrast-enhanced sonography. *Invest Radiol* 46(2):106–115
27. Claudon M, Dietrich CF, Choi BI et al (2013) World Federation for Ultrasound in Medicine; European Federation of Societies for Ultrasound. Guidelines and good clinical practice recommendations for Contrast Enhanced Ultrasound (CEUS) in the liver - update 2012: WFUMB-EFSUMB initiative in cooperation with representatives of AFSUMB, AIUM, ASUM, FLAUS and ICUS. *Ultrasound Med Biol* 39(2):187–210
28. ACR American College of Radiology (2019) ACR appropriateness criteria. Reston VA, USA available from <https://www.acr.org/Clinical-Resources/ACR-Appropriateness-Criteria> Accessed 18 Mar 2019
29. Elsayes KM, Hooker JC, Agrons MM et al (2017) 2017 version of LI-RADS for CT and MR imaging: an update. *Radiographics* 37:1994–2017
30. Wilson SR, Lyschchik A, Piscaglia F et al (2018) CEUS LI-RADS: algorithm, implementation, and key differences from CT/MRI. *Abdom Radiol (NY)* 43(1):127–142
31. Kambadakone AR, Fung A, Gupta RT et al (2018) LI-RADS technical requirements for CT, MRI, and contrast-enhanced ultrasound. *Abdominal Radiol* 43(1):56–74
32. Piscaglia F, Wilson SR, Lyschchik A et al (2017) American College of Radiology Contrast Enhanced Ultrasound Liver Imaging Reporting and Data System (CEUS LI-RADS) for the diagnosis of hepatocellular carcinoma: a pictorial essay. *Ultraschall Med* 38(03):320–324
33. Lyschchik A, Kono Y, Dietrich CF et al (2018) Contrast-enhanced ultrasound of the liver: technical and lexicon recommendations from the ACR CEUS LI-RADS working group. *Abdom Radiol (NY)* 43(4):861–879
34. Maruyama H, Takahashi M, Ishibashi H, Yoshikawa M, Yokosuka O (2012) Contrast enhanced ultrasound for characterisation of hepatic lesions appearing non hypervascular on CT in chronic liver diseases. *Br J Radiol* 85:351–357
35. Takahashi M, Maruyama H, Shimada T et al (2013) Characterization of hepatic lesions (≤ 30 mm) with liver-specific contrast agents: a comparison between ultrasound and magnetic resonance imaging. *Eur J Radiol* 82(1):75–84
36. Sugimoto K, Moriyasu F, Shiraishi J et al (2012) Assessment of arterial hypervascularity of hepatocellular carcinoma: comparison of contrast-enhanced US and gadoxetate disodium-enhanced MR imaging. *Eur Radiol* 22(6):1205–1213
37. Bhayana D, Kim TK, Jang HJ, Burns PN, Wilson SR (2010) Hypervascular liver masses on contrast-enhanced ultrasound: the importance of washout. *AJR Am J Roentgenol* 194:977–983
38. Jang HJ, Kim TK, Burns PN, Wilson SR (2007) Enhancement patterns of hepatocellular carcinoma at contrast-enhanced US: comparison with histologic differentiation. *Radiology* 244(3):898–906
39. Tang A, Valasek MA, Sirlin CB (2015) Update on the liver imaging reporting and data system: what the pathologist needs to know. *Adv Anat Pathol* 22(5):314–322
40. Quaia E, Bartolotta TV, Midiri M, Cernic S, Belgrano M, Cova M (2006) Analysis of different contrast enhancement patterns after microbubble-based contrast agent injection in liver hemangiomas with atypical appearance on baseline scan. *Abdom Imaging* 31(1):59–64
41. Bartolotta TV, Midiri M, Quaia E et al (2005) Liver haemangiomas undetermined at grey-scale ultrasound: contrast-enhancement patterns with SonoVue and pulse-inversion US. *Eur Radiol* 15(4):685–693
42. Bartolotta T, Midiri M, Galia M A et al (2003) Atypical liver hemangiomas: contrast-enhancement patterns with SH U 508A and pulse-inversion US. *Radiol Med* 106(4):320–328
43. Bartolotta TV, Taibbi A, Galia M et al (2007) Centrifugal (inside-out) enhancement of liver hemangiomas: a possible atypical appearance on contrast-enhanced US. *Eur J Radiol* 64(3):447–455
44. Bartolotta TV, Midiri M, Galia M et al (2007) Characterization of benign hepatic tumors arising in fatty liver with SonoVue and pulse inversion US. *Abdom Imaging* 32(1):84–91
45. Bartolotta TV, Taibbi A, Galia M et al (2007) Characterization of hypoechoic focal hepatic lesions in patients with fatty liver: diagnostic performance and confidence of contrast-enhanced ultrasound. *Eur Radiol* 17(3):650–661
46. Bartolotta TV, Taibbi A, Picone D, Anastasi A, Midiri M, Lagalla R (2017) Detection of liver metastases in cancer patients with geographic fatty infiltration of the liver: the added value of contrast-enhanced sonography. *Ultrasonography* 36(2):160–169
47. Kim TK, Lee KH, Khalili K, Jang HJ (2011) Hepatocellular nodules in liver cirrhosis: contrast-enhanced ultrasound. *Abdom Imaging* 36(3):244–263
48. Khanna M, Ramanathan S, Fasih N, Schieda N, Virmani V, McInnes MD (2015) Current updates on the molecular genetics and magnetic resonance imaging of focal nodular hyperplasia and hepatocellular adenoma. *Insights Imaging* 6(3):347–362
49. Taibbi A, Brancatelli G, Matranga D, Midiri M, Lagalla R, Bartolotta TV (2019) Focal nodular hyperplasia: a weight-based, intraindividual comparison of gadobenate dimeglumine and gadoxetate disodium-enhanced MRI. *Diagn Interv Radiol* 25(2):95–101
50. Giambelluca D, Taibbi A, Midiri M, Bartolotta TV (2019) The “spoke wheel” sign in hepatic focal nodular hyperplasia. *Abdom Radiol (NY)* 44(3):1183–1184
51. Sandonato L, Cipolla C, Graceffa G et al (2007) Giant hepatocellular adenoma as cause of severe abdominal pain: a case report. *J Med Case Rep* 27(1):57
52. Bartolotta TV, Midiri M, Scialpi M, Sciarino E, Galia M, Lagalla R (2004) Focal nodular hyperplasia in normal and fatty liver: a qualitative and quantitative evaluation with contrast-enhanced ultrasound. *Eur Radiol* 14(4):583–591
53. Bartolotta TV, Taibbi A, Matranga D, Malizia G, Lagalla R, Midiri M (2010) Hepatic focal nodular hyperplasia: contrast-enhanced ultrasound findings with emphasis on lesion size, depth and liver echogenicity. *Eur Radiol* 20(9):2248–2256
54. Bartolotta TV, Taibbi A, Brancatelli G et al (2014) Imaging findings of hepatic focal nodular hyperplasia in men and women: are they really different? *Radiol Med* 119(4):222–230
55. Wildner D, Bernatik T, Greis C, Seitz K, Neurath MF, Strobel D (2015) CEUS in hepatocellular carcinoma and intrahepatic cholangiocellular carcinoma in 320 patients - early or late washout matters: a subanalysis of the DEGUM multicenter trial. *Ultraschall Med* 36(2):132–139

56. Chen LD, Ruan SM, Liang JY et al (2018) Differentiation of intrahepatic cholangiocarcinoma from hepatocellular carcinoma in high-risk patients: a predictive model using contrast-enhanced ultrasound. *World J Gastroenterol* 24(33):3786–3798
57. Vilana R, Forner A, Bianchi L et al (2010) Intrahepatic peripheral cholangiocarcinoma in cirrhosis patients may display avascular pattern similar to hepatocellular carcinoma on contrast-enhanced ultrasound. *Hepatology*. 51(6):2020–2029
58. Han J, Liu Y, Han F et al (2015) The degree of contrast washout on contrast-enhanced ultrasound in distinguishing intrahepatic cholangiocarcinoma from hepatocellular carcinoma. *Ultrasound Med Biol* 41(12):3088–3095
59. de Sio I, Iadevaia MD, Vitale LM et al (2014) Optimized contrast-enhanced ultrasonography for characterization of focal liver lesions in cirrhosis: a single-center retrospective study. *United European Gastroenterol J* 2(4):279–287
60. Li R, Yuan MX, Ma KS et al (2014) Detailed analysis of temporal features on contrast enhanced ultrasound may help differentiate intrahepatic cholangiocarcinoma from hepatocellular carcinoma in cirrhosis. *PLoS One* 9(5):e98612. <https://doi.org/10.1371/journal.pone.0098612>
61. Martí-Bonmatí L, Delgado F (2010) MR imaging in liver cirrhosis: classical and new approaches. *Insights Imaging* 1(4):233–244
62. Galia M, Taibbi A, Marin D et al (2014) Focal lesions in cirrhotic liver: what else beyond hepatocellular carcinoma? *Diagn Interv Radiol* 20(3):222–228
63. Tan GX, Miranda R, Sutherland T (2016) Causes of hepatic capsular retraction: a pictorial essay. *Insights Imaging* 17(6):831–840
64. Campos JT, Sirlin CB, Choi JY (2012) Focal hepatic lesions in Gd-EOB-DTPA enhanced MRI: the atlas. *Insights Imaging* 3(5):451–748/radiol.14132361
65. Jang HJ, Kim TK, Burns PN, Wilson SR (2015) CEUS: an essential component in a multimodality approach to small nodules in patients at high-risk for hepatocellular carcinoma. *Eur J Radiol* 84(9):1623–1635
66. Ogren M, Bergqvist D, Björck M, Acosta S, Eriksson H, Sternby NH (2006) Portal vein thrombosis: prevalence, patient characteristics and lifetime risk: a population study based on 23,796 consecutive autopsies. *World J Gastroenterol* 12(13):2115–2119
67. Raza SA, Jang HJ, Kim TK (2014) Differentiating malignant from benign thrombosis in hepatocellular carcinoma: contrast-enhanced ultrasound. *Abdom Imaging* 39:153–161
68. Bartolotta TV, Taibbi A, Midiri M, Lagalla R (2019, 2019) Contrast enhanced ultrasound of HCC: where do we stand? *Ultrasonography*. <https://doi.org/10.14366/usg.18060> [Epub ahead of print]
69. Cassinotto C, Aubé C, Dohan A (2017) Diagnosis of hepatocellular carcinoma: an update on international guidelines. *Diagn Interv Imaging* 98(5):379–391

Publisher's Note

Springer Nature remains neutral with regard to jurisdictional claims in published maps and institutional affiliations.

Submit your manuscript to a SpringerOpen[®] journal and benefit from:

- Convenient online submission
- Rigorous peer review
- Open access: articles freely available online
- High visibility within the field
- Retaining the copyright to your article

Submit your next manuscript at ► [springeropen.com](https://www.springeropen.com)
