



Relationship between Cancer Stem Cell Marker CD133 and Cancer Germline Antigen Genes in NCI-H292 Lung Cancer Cells

Taek Yong Ko, M.D., Jong In Kim, M.D., Sang Ho Lee, M.D.

Department of Thoracic and Cardiovascular Surgery, Kosin University Gospel Hospital, Kosin University College of Medicine, Busan, Korea

ARTICLE INFO

Received June 27, 2019

Revised September 16, 2019

Accepted September 18, 2019

Corresponding author

Jong In Kim

Tel 82-51-990-6466

Fax 82-51-990-3066

E-mail charlie822@empas.com

ORCID

https://orcid.org/0000-0001-5127-726X

Background: Previous studies have shown that lung cancer stem cells express CD133 and that certain cancer stem cells express cancer germline antigens (CGAs). The transcriptional regulation of CD133 is complicated and poorly understood. We investigated CD133 and CGA expression in a non-small cell lung cancer cell line.

Methods: The expression levels of CD133 and CGAs (MAGE-6, GAGE, SSX, and TRAG-3) were measured in an NCI-H292 lung cancer cell line. The methylation status of the CD133 gene promoter region was analyzed. The expression levels and promoter methylation statuses of CD133 and CGAs were confirmed by treatment with the demethylating agent 5-aza-2'-deoxycytidine (ADC).

Results: After treatment with ADC, CD133 expression was no longer detected. MAGE-6 and TRAG-3 were detected before ADC treatment, while GAGE and SSX were not detected. ADC treatment upregulated MAGE-6 and TRAG-3 expression, while GAGE expression was still undetected after treatment, and only weak SSX expression was observed. GAGE expression was not correlated with expression of CD133, while the levels of expression of MAGE-6, TRAG-3, and SSX were inversely correlated with CD133 expression.

Conclusion: These results showed that CD133 expression can be regulated by methylation. Thus, the demethylation of the CD133 promoter may compromise the treatment of lung cancer by inactivating cancer stem cells and/or activating CGAs.

Keywords: Lung neoplasms, Neoplastic stem cells, Demethylation

Introduction

The cancer stem cell (CSC) hypothesis suggests that intra-tumoral heterogeneity may be accounted for by a subclone of cells that are capable of self-renewal, new tumor formation, and repopulation of the heterogeneous original tumor [1]. Thus, therapeutic interventions should target these cells rather than the tumor mass itself, as CSCs may be an important cause of conventional therapeutic failure in various malignant tumors [1]. CD133, which is associated with organ-specific stem cells, has been described as a putative marker of cancer-initiating cells in various tumor types [2]. Cancer-initiating cells exhibit a low proliferative rate, as well as self-renewal capacity, differentiation potential among actively proliferating tumor cells, and resistance to chemotherapy and radiotherapy. Recently, CD133 overexpression in non-small-cell lung cancer (NSCLC) was

found to be associated with neuroendocrine histological transformation and resistance to targeted therapy [3]. Tiri-no et al. [2] reported that CD133-positive (CD133⁺) cells isolated from NSCLC can form tumors and act as tumor-initiating cells. As such, the clinical relationship between CD133 expression and NSCLC has been an area of intense investigation in medical oncology. Hilbe et al. [4] noted that CD133⁺ cells may contribute to tumor angiogenesis in NSCLC. Furthermore, Bertolini et al. [5] reported that CD133 is involved in the response to chemotherapy in lung cancer. High CD133 expression is correlated with a tendency toward shorter progression-free survival in NSCLC patients treated with platinum-containing regimens, indicating the presence of chemoresistant, highly tumorigenic, and stem-like features [5]. The molecular features of such CD133⁺ NSCLC cells may provide a rationale for more specific therapeutic targeting and more well-defined pre-



dictive factors in these tumors. Indeed, Gedye et al. [6] reported that CD133⁺ melanoma cells exhibit increased expression of specific cancer germline antigens (CGAs), such as NY-ESO-1, and these *in vitro* results indicate the possibility that CSCs may express similar antigens *in vivo* and that the immune targeting of such antigens may be a clinical strategy for cancer adjuvant therapy. In addition, several reports have shown that CD133⁺ tumor cells are more effective in repairing radiation-induced DNA damage than CD133⁻ tumor cells [7]. Therefore, the exact role of CD133 in lung cancer is not yet completely understood, indicating that further studies are needed.

In recent years, the relationship between the immune system and cancer biology has become increasingly clear, and cancer immunotherapeutics with CGAs or cancer/testis antigens have been identified as potential strategies both for improving recognition and for selectively carrying out the effective elimination of tumor cells [8]. As described above, studies have reported potential relationships between CSCs and the expression of genes coding for cancer-specific antigens [7], with representative cancer-specific antigens including MAGE-6, GAGE, SSX, and TRAG-3. Therefore, we investigated the relationship between CSCs and cancer-specific antigen expression in lung cancer with the goal of applying our findings to the treatment of this disease.

In the present study, we investigated the expression of CD133 and its association with DNA methylation status in an NSCLC cell line. We also examined the relationship between CD133 expression and CGAs in lung cancer cells with the aim of furthering the identification of personalized therapies for lung cancer.

Methods

The study protocol was approved by the Institutional Review Board of Kosin University Gospel Hospital (IRB approval no., 13-008).

Cell lines and cell culture

Cells from the NCI-H292 lung cancer cell line were obtained from the Korean Cell Line Bank (Seoul, Korea). The cells were cultured in RPMI 1640 medium (Invitrogen, Mulgrave, Australia) supplemented with 10% fetal calf serum (CSL, Victoria, Australia), 2 mM glutamine, 25 mM HEPES, 100 U/mL penicillin, and 100 µg/mL streptomycin (RF10), passaged with 2 mM ethylenediaminetetraacetic acid (EDTA) in phosphate-buffered saline (pH 7.4). Cul-

tures were maintained in humidified incubators at 37°C in a 5% CO₂ and 95% air atmosphere. Routine monitoring confirmed that all cells repeatedly tested negative for mycoplasma infection, bacterial contamination, and genetic heterogeneity, the last of which was assessed with DNA fingerprinting analysis (AmpFISTR Identifier PCR Amplification Kit; Applied Biosystems, Foster City, CA, USA). Cell lines were used at passage 10 or less.

Cell proliferation assays

To assess the proliferation of cell populations, 96-well plates were seeded with 500 cells/well, and cell viability was measured at various time points by the conversion of methyl terazol sulfate to formazan (Promega, Madison, WI, USA) according to the manufacturer's instructions.

Nucleic acid isolation and complementary DNA synthesis

To isolate nucleic acids, cells from the same isolation and passage were treated identically as follows. Cells were grown to subconfluence (70%), washed, and kept in serum-starved media for 2 hours. Cells were lysed using 10 mM Tris (pH 7.4), 0.1% sodium dodecyl sulfate, 0.1% Tween 20, 0.5% TritonX100, 150 mM sodium chloride, 10 mM EDTA, 1 M urea, 10 mM N-ethylmaleimide, 4 mM benzamidine, and 1 mM phenylmethylsulfonyl fluoride and collected by scraping. Both genomic DNA and total RNA were isolated from washed cell pellets. Genomic DNA was extracted using a G-DEX kit (Intron Biotechnology, Burlington, MA, USA) according to the manufacturer's instructions. Total RNA was isolated from each of the samples after lysis in guanidinium isothiocyanate and phenol extraction using a commercial kit (Trizol; Invitrogen Laboratories, San Diego, CA, USA). For complementary DNA (cDNA) synthesis, 2 mg of total RNA was reverse transcribed using random hexamers, deoxynucleoside triphosphates, and 1 µL (200 units) of Superscript II reverse transcriptase (Invitrogen, Carlsbad, CA, USA) in a final volume of 20 µL for 80 minutes at 42°C after a 15-minute denaturation step at 80°C. Finally, 80 µL of distilled water was added to the reverse transcription (RT) reaction.

Reverse transcription-polymerase chain reaction

To analyze CD133 expression, cDNA was amplified in 25 µL of a polymerase chain reaction (PCR) mixture, together with 1 µL of the RT reaction mixture, primers, and 1 unit

of *Taq* DNA polymerase. RT-PCR was carried out using RT-specific primers (located +343 to +679 bases from the translation start site in the messenger RNA [mRNA] sequence): a CD133 RT sense primer (5'-CTGGGGCTGCTGTTTATTATTCTG-3') and a CD133 RT antisense primer (5'-ACGCCTTGTCTTGGTAGTGTTG-3') (Table 1). The PCR protocol consisted of 5 minutes at 94°C for the initial denaturation; 35 cycles of 94°C (30 seconds), 55°C (30 seconds), and 72°C (60 seconds); and a final elongation step lasting 7 minutes at 72°C. PCR amplification was performed with a programmable thermal cycler (PCR System 9700; Applied Biosystems). Primers for β -actin were used to confirm RNA integrity. cDNA from the same synthesis reaction was used for RT-PCR reactions for both CD133 and β -actin. Amplified DNA fragments were visualized on a 2% agarose gel stained with ethidium bromide. To detect CGA genes, RT-PCR was performed with DNA primers designed by the National Center for Biotechnology Information (National Institutes of Health, Bethesda, MD, USA) (Table 1).

Methylation-specific polymerase chain reaction

To analyze methylation, 2 mg of genomic DNA obtained from the lung cancer cell line was modified using the EZ DNA Methylation Kit (Zymo Research, Orange, CA, USA). Primers specific for bisulfite-modified DNA were designed using MethPrimer software (<http://www.urogene.org/methprimer/index1.html>). The primers (located -8061 to -7782 bases from the transcription start site) used in this study were as follows: CD133 M primer sense (5'-TTCGGG ATAGAGGAAGTCGTAA-3'), CD133 M primer antisense (5'-CTCCCGCCCTAATCACCGCT-3'), CD133 U primer sense (5'-TTTGGGATAGAGGAAGTTGTAA-3'), and

CD133 U primer antisense (5'-CTCCCACCCTAATCACC ACT-3'). The PCR conditions were as follows: 94°C for 5 minutes; then 43 cycles of 94°C for 30 seconds, 60°C (methylation-specific PCR [MS-PCR]) or 62°C (non-MS PCR) for 30 seconds, and 72°C for 60 seconds; and finally 72°C for 7 minutes. The amplified DNA fragments were visualized on a 2% agarose gel stained with ethidium bromide.

Bisulfite sequencing analysis

Sequencing primers recognizing both methylated and unmethylated sites (MU)—CD133 MU sense (5'-TATTTGG TTATGTTTTTAGTTTTT-3') and CD133 MU antisense (5'-CCTAATCAACAAATACCTCTCTC-3')—were designed using MethPrimer software. These primers were located approximately -8103 to -7708 bases from the transcription start site. The PCR conditions used were as follows: 5 minutes at 94°C for initial denaturation; 40 amplification cycles of 94°C (30 seconds), 59°C (30 seconds), and 72°C (60 seconds); and a final elongation step lasting 7 minutes at 72°C. The PCR products obtained with bisulfite sequencing primers were inserted into the pGEM-T Easy vector (Promega, Madison, WI, USA) for cloning. Sequences of 5 individual colonies for each analyzed cell line were determined using universal pUC/M13 primers, and each sequence was analyzed using a *Taq* dideoxy terminator cycle sequencing kit on an ABI 3730 DNA sequencer (Applied Biosystems).

5-Aza-2'-deoxycytidine treatment

RT-PCR was used to evaluate the expression of CD133, common-GAGE (1, 2, 8, and b3-7), TRAG-3, common SSX (1-9), and MAGE A6 mRNA in NCI-H292 cells that received treatment with 1 μ M 5-aza-2'-deoxycytidine (ADC) for 24 hours, 48 hours, and 72 hours. Briefly, 2×10^5 cells were seeded in two 75-cm² culture flasks on day 0. The cells were treated with a control or 5 mmol/L of ADC (Sigma-Aldrich, St. Louis, MO, USA) for 24 hours on day 2. The culture was replenished with medium containing ADC every 48 hours (on days 4 and 6), and the medium was changed 24 hours after adding ADC. The cells were harvested on day 8 to obtain RNA, which was used for cDNA synthesis and the analysis of CD133 expression, as described above.

Direct DNA sequencing of polymerase chain reaction products

The Wizard Plus SV Minipreps kit (Promega, Madison, WI, USA) was used to prepare template DNA for sequenc-

Table 1. Primer sequences for detecting cancer germline antigens used in this study

Primer	Category	Sequence
CD133	Sense	TATTTGGTTATGTTTTAGTTTTT
	Antisense	CCTAATCAACAAATACCTCTCTC
MAGE-6	Sense	TGGAGGACCAGAGGCCCCC
	Antisense	CAGGATGATTATCAGGAAGCCTGT
GAGE	Sense	GACCAAGGCGCTATGTAC
	Antisense	GTCCATCTCCTGCCCTG
SSX	Sense	GTGCCATGAACGGAGACGA
	Antisense	GTCTGTGGGTCCAGGCATGT
TRAG-3	Sense	TGGGGGAGGCTTGGAGAGACC
	Antisense	TGCCCTGTGGTCCCGCTATG

A, adenine; C, cytosine; G, guanine; T, thymine.

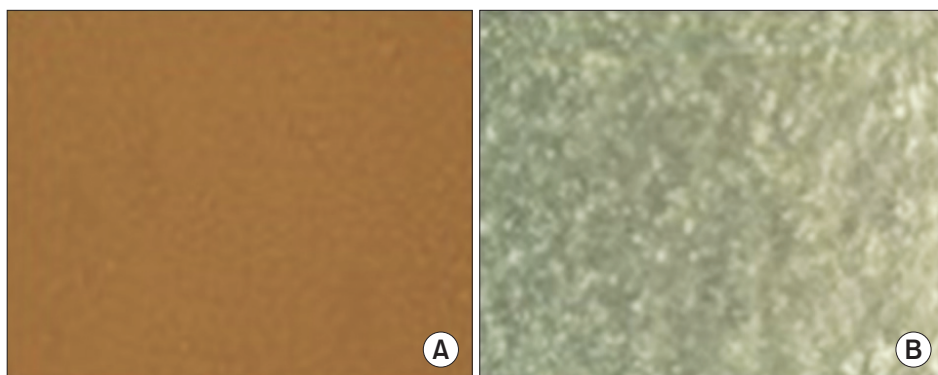


Fig. 1. Morphology of NCI-H292 cells before (A) and after (B) ADC treatment ($\times 100$). Morphology did not change after ADC treatment, but cell number decreased upon ADC treatment. ADC, 5-aza-2'-deoxycytidine.

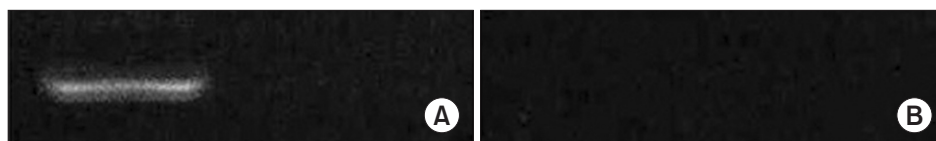


Fig. 2. CD133 hypermethylation status of NCI-H292 cells. These results show that the expression of CD133 is regulated by a hypermethylated promoter region. (A) Methylated CD133. (B) Unmethylated CD133.

ing after the subcloning of RT-PCR products. An automatic DNA sequencer (ABI 3700; Macrozen, Seoul, Korea) was used for sequencing. The sequence data were analyzed with the National Center for Biotechnology Information (National Institutes of Health) Blast search program.

Results

Morphological changes of NCI-H292 cells treated with ADC

The morphology of tumor cells treated with ADC did not change. However, the cell number was slightly decreased by ADC treatment (Fig. 1).

Expression of CD133 in NCI-H292 cells

The gene expression of CD133 in NCI-H292 cells as determined by RT-PCR analysis was significantly lower after ADC treatment than in controls (Figs. 2, 3). DNA sequencing was used to confirm the specificity of the RT-PCR products.

Analysis of CD133 promoter methylation status with methylation-specific-polymerase chain reaction

To assess whether CD133 gene expression was influenced by the methylation of its promoter and whether promoter

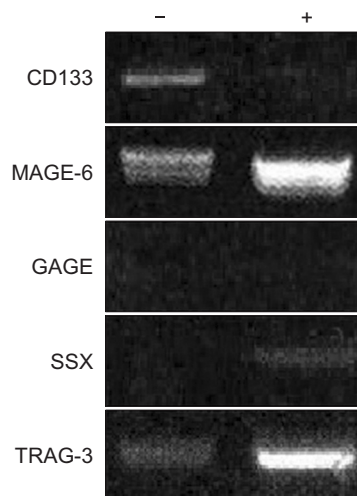


Fig. 3. Expression of CD133, MAGE-6, GAGE, SSX, and TRAG-3 mRNA before and after treatment with a 5-aza-2' demethylating agent (ADC). ADC treatment resulted in loss of CD133 expression. The expression of MAGE-6 and TRAG-3 was enhanced after ADC treatment. GAGE expression was not detectable before or after ADC treatment. Weak SSX expression was observed after ADC treatment. These findings explain the efficacy of demethylating agents such as ADC for inhibiting lung cancer stem cells, with prominent targeting against cancer germline antigens, and suggest that cell-based immunotherapy for lung cancer may be promising. -, before ADC treatment; +, after ADC treatment; ADC, 5-aza-2'-deoxycytidine.

CpG islands of the gene were methylated or unmethylated in NCI-H292 cancer cells, we used MS-PCR with primers specific for methylated and unmethylated DNA. Only

expression of MAGE-6 and TRAG-3 was detectable. These results indicated that CGA expression is cell-type dependent and that different CGAs can be expressed in different cell types. After treatment with ADC, the expression levels of MAGE-6, TRAG-3, and SSX were upregulated, while only GAGE remained unaffected, suggesting that the mechanism of GAGE expression may not be demethylation in NCI-H292 cells. To design novel therapeutic agents against CSCs, it is desirable to seek targets for CSCs for which CGAs become activated following demethylation. In this study, MAGE-6 and TRAG-3 were identified as potential targets of immunotherapy in CD133⁺ tumor cells. Some recent studies have shown that cancer cell lines acquire epigenetic and phenotypic changes over time [15]. To minimize this problem, we performed assays with freshly derived early passage (<10) cells. Our examination of immune targeting in the CD133⁺ lung cancer cell line was based upon 1 early passage cell line in which CGA antigen expression and CD133 expression fortuitously intersected. These results therefore raise the possibility that CGA antigens may be immunological targets for CD133⁺ lung cancer cells. This study helps enhance our understanding of the relationship between CSCs and CGAs and may shed light on the causes of therapeutic failure in various malignant tumors.

In conclusion, the NCI-H292 cell line expressed CD133 with hypermethylation, as confirmed by MS-PCR, bisulfite sequencing analysis, and treatment with ADC. ADC treatment resulted in the loss of CD133 expression and the up-regulation of expression of 3 CGAs (MAGE-6, TRAG-3, and SSX). These results may contribute to our understanding of the role of CD133 in the pathogenesis of lung cancer associated with CGA expression and explain the efficacy of demethylating agents in the inhibition of lung CSCs with prominent targeting against CGAs. In turn, this may provide new knowledge for the further development of cancer and cell-based immunotherapy. The overall findings of this study demonstrated that epigenetic changes in a lung cancer cell line with maintenance of hypermethylation are capable of restoring CD133 expression.

Conflict of interest

No potential conflict of interest relevant to this article was reported.

ORCID

Taek Yong Ko: <https://orcid.org/0000-0002-0096-0664>

Jong In Kim: <https://orcid.org/0000-0001-5127-726X>

Sang Ho Lee: <https://orcid.org/0000-0001-6093-9632>

References

1. Reya T, Morrison SJ, Clarke MF, Weissman IL. *Stem cells, cancer, and cancer stem cells*. *Nature* 2001;414:105-11.
2. Tirino V, Camerlingo R, Franco R, et al. *The role of CD133 in the identification and characterisation of tumour-initiating cells in non-small-cell lung cancer*. *Eur J Cardiothorac Surg* 2009;36:446-53.
3. Koyama K, Katsurada N, Jimbo N, et al. *Overexpression of CD 133 and BCL-2 in non-small cell lung cancer with neuroendocrine differentiation after transformation in ALK rearrangement-positive adenocarcinoma*. *Pathol Int* 2019;69:294-9.
4. Hilbe W, Dirnhofner S, Oberwasserlechner F, et al. *CD133 positive endothelial progenitor cells contribute to the tumour vasculature in non-small cell lung cancer*. *J Clin Pathol* 2004;57:965-9.
5. Bertolini G, Roz L, Perego P, et al. *Highly tumorigenic lung cancer CD133+ cells display stem-like features and are spared by cisplatin treatment*. *Proc Natl Acad Sci U S A* 2009;106:16281-6.
6. Gedye C, Quirk J, Browning J, et al. *Cancer/testis antigens can be immunological targets in clonogenic CD133+ melanoma cells*. *Cancer Immunol Immunother* 2009;58:1635-46.
7. Bao S, Wu Q, McLendon RE, et al. *Glioma stem cells promote radioresistance by preferential activation of the DNA damage response*. *Nature* 2006;444:756-60.
8. Cebon J. *Cancer vaccines: where are we going?* *Asia Pac J Clin Oncol* 2010;6 Suppl 1:S9-15.
9. Huang J, Plass C, Gerhauser C. *Cancer chemoprevention by targeting the epigenome*. *Curr Drug Targets* 2011;12:1925-56.
10. Taberlay PC, Jones PA. *DNA methylation and cancer*. *Prog Drug Res* 2011;67:1-23.
11. Jeon YK, Kim SH, Choi SH, et al. *Promoter hypermethylation and loss of CD133 gene expression in colorectal cancers*. *World J Gastroenterol* 2010;16:3153-60.
12. Pellacani D, Packer RJ, Frame FM, et al. *Regulation of the stem cell marker CD133 is independent of promoter hypermethylation in human epithelial differentiation and cancer*. *Mol Cancer* 2011;10:94.
13. Gan Q, Yoshida T, McDonald OG, Owens GK. *Concise review: epigenetic mechanisms contribute to pluripotency and cell lineage determination of embryonic stem cells*. *Stem Cells* 2007;25:2-9.
14. Looijenga LH, Hersmus R, Gillis AJ, et al. *Genomic and expression profiling of human spermatocytic seminomas: primary spermatocyte as tumorigenic precursor and DMRT1 as candidate chromosome 9 gene*. *Cancer Res* 2006;66:290-302.
15. Lee J, Kotliarova S, Kotliarov Y, et al. *Tumor stem cells derived from glioblastomas cultured in bFGF and EGF more closely mirror the phenotype and genotype of primary tumors than do serum-cultured cell lines*. *Cancer Cell* 2006;9:391-403.