



Review

# Cerebral Cavernous Malformation Proteins in Barrier Maintenance and Regulation

Shu Wei <sup>1,2,†</sup>, Ye Li <sup>2,†</sup>, Sean P. Polster <sup>3</sup> , Christopher R. Weber <sup>2</sup>, Issam A. Awad <sup>3</sup> and Le Shen <sup>2,3,\*</sup>

<sup>1</sup> Graduate Program in Public Health and Preventive Medicine, Wuhan University of Science and Technology, Wuhan 430081, China; shuwza@gmail.com

<sup>2</sup> Department of Pathology, The University of Chicago, Chicago, IL 60615, USA; yli170@bsd.uchicago.edu (Y.L.); cweber@bsd.uchicago.edu (C.R.W.)

<sup>3</sup> Section of Neurosurgery, Department of Surgery, The University of Chicago, Chicago, IL 60615, USA; spolster@uchicago.edu (S.P.P.); iawad@uchicago.edu (I.A.A.)

\* Correspondence: leshen@uchicago.edu

† These authors contributed equally.

Received: 10 December 2019; Accepted: 15 January 2020; Published: 20 January 2020



**Abstract:** Cerebral cavernous malformation (CCM) is a disease characterized by mulberry shaped clusters of dilated microvessels, primarily in the central nervous system. Such lesions can cause seizures, headaches, and stroke from brain bleeding. Loss-of-function germline and somatic mutations of a group of genes, called CCM genes, have been attributed to disease pathogenesis. In this review, we discuss the impact of CCM gene encoded proteins on cellular signaling, barrier function of endothelium and epithelium, and their contribution to CCM and potentially other diseases.

**Keywords:** cerebral cavernous malformation; endothelial barrier; epithelial barrier; Rho; ROCK; MEKK3

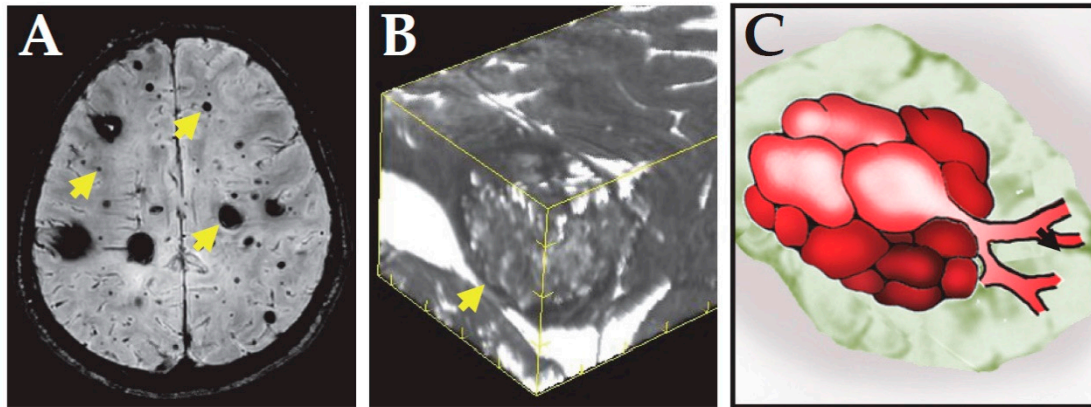
## 1. Introduction

One of the key functions of endothelial and epithelial cells is to create a barrier that separates different tissue compartments, and in the case of skin, epithelial cells separate body and outer environment. Compromised barrier function leads to abnormal mixing of different tissue components, which can contribute to pathogenesis of many diseases. In this review, we focus on a group of proteins that participates in the development of a neurovascular disease, cerebral cavernous malformation (CCM), and examine their impact on cellular signaling and barrier function.

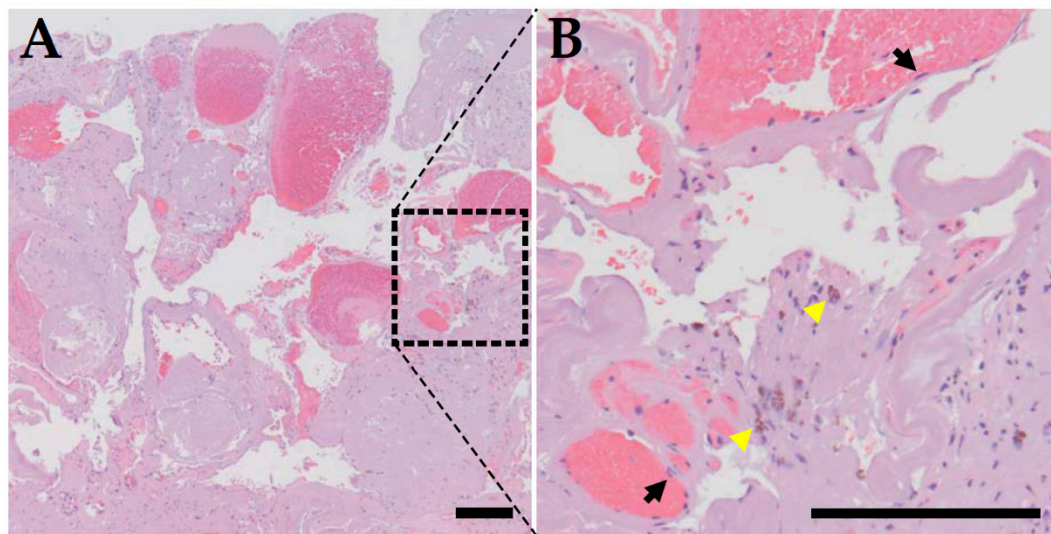
## 2. Clinical Features of CCM

CCM (also known as cavernous angioma) disease is characterized by the development of abnormally dilated capillaries, primarily in the central nervous system (Figure 1) [1]. Grossly, these lesions appear to be blood filled, mulberry shaped clusters of thin-walled small vessels. Histologically, the nested microvessels have little supporting tissue and intervening parenchyma, and the dilated vessels are lined by a single layer of dysmorphic endothelial cells. Thrombi frequently form in these vessels, and hemosiderin deposits can be seen adjacent to these capillaries, indicating chronic bleeding (Figure 2). CCM patients are mostly diagnosed by magnetic resonance imaging initiated due to neurological changes, including headache, seizures, and other neurological deficits, such as nausea or vomiting, weakness or numbness, slurred speech, and altered vision. About 25% to 50% of CCM patients do not have clinical symptoms, and only a small fraction of these patients is identified incidentally [2,3]. The prevalence of CCM is about 0.5% in the general population [4,5], and about 70%

to 80% of CCM patients have one lesion, and the other 20% to 30% of CCM patients have more than one lesion [6,7]. Most of the patients with one lesion have the sporadic form of the disease without a family history, while the majority of the patients who have more than one lesion have a family history with autosomal dominant Mendelian inheritance.



**Figure 1.** Radiological presentation of CCM. (A) MRI image of the brain of a familial CCM patient. Susceptibility weighted imaging showed multiple dark CCM lesions with various sizes. Arrows indicate representative lesions. (B) 3D reconstruction of T2 weighted imaging of a CCM lesion. It shows the lesion is not uniform, but with popcorn appearance. The arrow indicates the location of the lesion. (C) Schematic presentation of a CCM lesion showing it is composed of nested dilated microvessels.



**Figure 2.** Histopathological presentation of CCM. (A) H&E staining of a surgically resected CCM lesion. It is composed of clusters of thin walled dilated microvessels with no supporting smooth muscle cells beneath the endothelial cell layer and no intervening brain parenchyma. Thrombi are present within the lumen of capillaries within the CCM lesion. (B) High power image of the boxed region of panel A. Black arrows point to individual endothelial cells lining the inner surface of dilated capillaries, and yellow arrowheads point to hemosiderin deposition adjacent to the capillaries, a sign of chronic bleeding. Bar = 200  $\mu$ m.

### 3. Genetics of CCM

Based on linkage analyses, three gene loci (*CCM1* [7q21-22], *CCM2* [7p15-p13], and *CCM3* [3q25.2-q27]) have been identified in the germ-line of familial cases [8–10]. Subsequently, the genes within these loci are identified to be *CCM1/KRIT1*, *CCM2/MGC4607*, and *CCM3/PDCD10* [11–16].

Of all familial CCM patients, ~60% have *CCM1* mutations, ~20% have *CCM2* mutations, ~10% have *CCM3* mutations, and a minority of familial CCM patients do not have mutations in these three genes [17]. Although mutations of *KRIT1*, *CCM2*, and *PDCD10* genes are all associated with histologically identical CCM lesions, patients with *PDCD10* mutations have the most severe phenotype, with earlier symptomatic onset [18,19]. A large fraction of mutations identified in patients are located in the coding region of *CCM* genes and are loss-of-function mutations [20]. DNA sequencing of lesional tissue and endothelial cells from familial CCM patients showed that in addition to germ-line mutations, these harbor somatic mutations of *CCM* genes, suggesting a two-hit mechanism for CCM pathogenesis [21,22]. Somatic mutations in the same *CCM* genes have been identified in sporadic lesions, indicating that loss of *CCM* function also contributes to sporadic disease development [23]. This also suggests that biomarkers and therapeutic targets aimed at the familial disease will also apply in sporadic CCM cases.

*CCM* proteins are conserved molecules. Orthologs of all three *CCM* genes have been identified in *Caenorhabditis elegans*. The *KRIT1* ortholog *kri-1* germline affects animal longevity and germ cell survival [24,25], and *ccm-2* participates in such processes [26]. The *PDCD10* ortholog *ccm-3* is required for excretory canal organization and germline tube development through affecting a large array of cellular events, including actomyosin organization, cell polarity and endocytic recycling [26–28]. In zebrafish, *krit1* and *ccm2* loss leads to dilation of major vessels, with spreading of endothelial cells [29], and a C-terminally truncated *PDCD10* causes a similar phenotype [30]. Although *Ccm* heterozygous knockout mice have little or no potential to develop CCM-like lesions in the brain, when they are on a genetically unstable background (*Msh2*<sup>-/-</sup> or *Trp53*<sup>-/-</sup>), these mice have a significantly higher lesion burden [19,31,32]. These findings demonstrate that loss of heterozygosity is likely an important driving force for CCM pathogenesis. Mouse studies further show that *KRIT1*, *CCM2*, and *PDCD10* participate in CCM pathogenesis. Deletion of *Krit1*, *Ccm2*, and *Pdcd10* genes all cause embryonic lethality due to cardiovascular defects [33–35]. Conventional homozygous *Krit1* and *Ccm2* deletion both cause defects in branchial arch artery formation [33,34], while *Pdcd10* deletion causes vasculogenesis and hematopoiesis defects [35]. When embryonic lethality is circumvented by tamoxifen-induced postnatal deletion of floxed *Ccm* genes, CCM-like lesion formation ensues, primarily in the cerebellum, suggesting they are CCM disease causing genes [36–39]. Consistent with human studies, mice with *Pdcd10* deletion also showed a more severe phenotype than mice with *Krit1* or *Ccm2* mutations, indicating *PDCD10* may affect *KRIT1* and *CCM2*-independent events [19]. Recent evidence reveals that clonally expanded mutated endothelial cells only comprise a fraction of cells lining CCM lesions, suggesting endothelial cells with *CCM* deletions may co-opt endothelial cells without *CCM* mutations to participate in CCM disease [40].

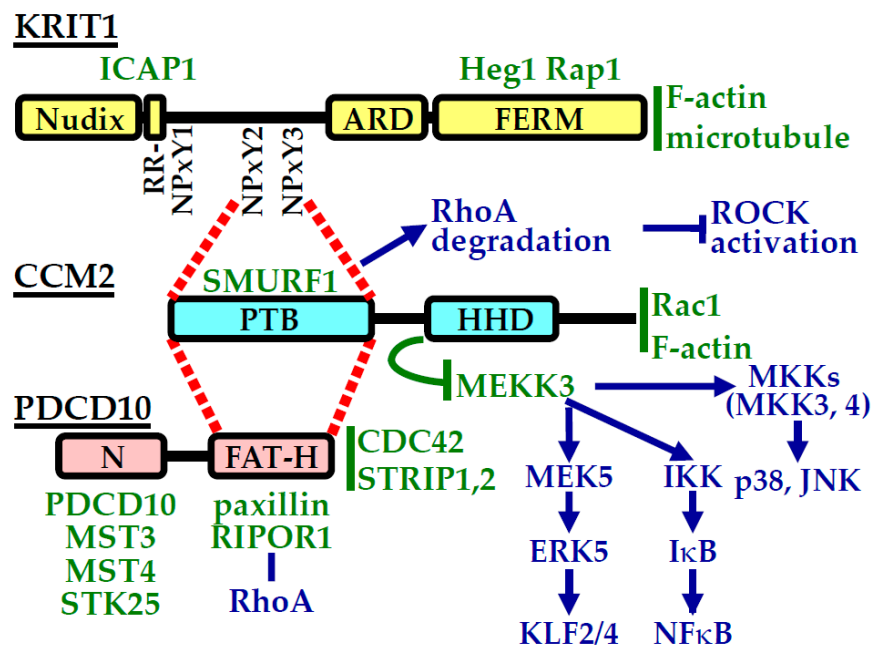
#### 4. CCM Proteins and Their Interactions

*KRIT1* (Krev interaction trapped protein-1, *CCM1*) is the largest of the three *CCM* proteins, with 529 amino acid residues [41]. It was first identified through its binding to the small GTPase *Rap1* (also called *Krev-1*), and it is comprised of an N-terminal Nudix domain, three NPxY/F motifs, an ankyrin-repeat region, and a C-terminal FERM (band 4.1, ezrin, radixin, moesin) domain (Figure 3). Through its N-terminal Nudix domain and NPxY/F motif containing region, *KRIT1* interacts with the  $\beta$ 1-integrin binding protein *ICAP1* to limit  $\beta$ 1-integrin activation [42,43]. The *KRIT1* FERM domain binds to a transmembrane protein *Heg1* and the small GTPase *Rap1* and is important for *KRIT1* to localize to the plasma membrane [41,44–46]. Consistent with its role in cytoskeletal regulation, *KRIT1* also directly associates with microtubules [47].

*CCM2* is a 444 amino acid residue protein, with a phosphotyrosine-binding domain (PTB) at its N-terminus and a C-terminal harmonin-homology domain (HHD) [13,48]. It was first characterized as an osmosensing scaffolding protein that binds to small GTPase *Rac1* and protein kinases *MEKK3* and *MKK3* [49]. *CCM2* is central to the *CCM* protein complex organization, as it can bind to both *KRIT1* and *PDCD10* (programmed cell death 10, *CCM3*) (Figure 3) [50–52]. The *CCM2* PTB domain binds directly

with the KRIT1 NPxY/F motif, and LD-like motif of CCM2 (within the linker region between the PTB and HHD domains) binds to the focal adhesion targeting (FAT) homology domain of PDCD10 [51–54]. Binding between KRIT1 and CCM2 is important for CCM2 localization [51,54], while the interaction between CCM2 and PDCD10 controls CCM2 and PDCD10 protein stability, as CCM2 depletion decreases cellular PDCD10 protein content, and PDCD10 depletion reduces CCM2 protein abundance [53]. CCM2 also associates with F-actin, bringing the actin regulating small GTPase Rac1 to the proximity of the actin cytoskeleton [55]. A paralog of CCM2, CCM2L, also exists [56]. Although CCM2L can bind to KRIT1 and compete with CCM2 for KRIT1 binding, it does not bind to PDCD10 [56]. Similar to CCM2, CCM2L also interacts with MEKK3 [57], but the significance of CCM2L for CCM disease pathogenesis and its effect on CCM protein complex organization and function remains poorly defined [58].

PDCD10 (CCM3) protein has 212 amino acid residues and consists of an N-terminal dimerization domain and a C-terminus FAT homology domain (Figure 3) [59]. It was first discovered as a gene upregulated during myeloid cell apoptosis [60]. In addition to binding to CCM2 [50], PDCD10 can bind to components of another protein complex, the striatin interacting phosphatase and kinase (STRIPAK) complex, through its dimerization domain. These proteins include striatin itself and germinal center kinase (GCK) III group of serine/threonine protein kinases MST4/MASK, MST3/STK24, and STK25/YSK1/SOK1 and other STRIPAK complex components, including STRIP1/FAM40A and STRIP2/FAM40B [61–67]. Although PDCD10 can bind to CCM2, PDCD10 primarily resides within the STRIPAK complex, rather than the CCM protein complex, in cells [63,64]. Furthermore, PDCD10 can bind to an array of other proteins, including paxillin, PTPN13, UNC13D [50,67–70]. Similar to KRIT1 and CCM2, PDCD10 also interacts with cytoskeletal regulating small GTPases. Cdc42 can co-immunoprecipitate with PDCD10, and Cdc42 deletion causes a CCM-like phenotype, suggesting Cdc42 and PDCD10 resides in the same CCM pathogenic pathway [71]. In addition, PDCD10 can directly bind to RIPOR1/FAM65A, a RhoA associated protein, providing a link between PDCD10 and RhoA signaling [72].



**Figure 3.** CCM protein domain organization and protein interactions. CCM protein domain organizations are presented schematically. Direct interaction partners are shown in green letters. Locations of the letters indicate rough interaction sites for these binding proteins. If a binding site is unknown, the binding partner is listed to the right of each CCM protein. Key pathways affected by CCM protein and their interaction partners are shown in blue letters. Dashed red lines indicate interaction sites between individual CCM proteins.



## 5. CCM Proteins and Cellular Signaling

Because each of the CCM proteins has a multitude of interaction partners, it is not surprising that these proteins can impact multiple signaling pathways and cellular processes, including endothelial to mesenchymal transition, autophagy, exocytosis, and Golgi complex organization [63,69,72–75]. One of the best understood CCM controlled signaling pathways is the RhoA-Rho-associated coiled-coil kinase (ROCK) signaling. Decreased expression of any of the CCM proteins leads to increased RhoA and ROCK activity [19,30,34,54,76,77], which in turn increases myosin regulatory light chain (MLC) phosphorylation, causing actomyosin contraction that affects cell migration and intercellular junction integrity. Through its PTB domain, CCM2 can bind to the E3 ubiquitin ligase Smad ubiquitin regulatory factor 1 (Smurf1) [76,78], which ubiquitinates RhoA to promote its degradation [78]. In the absence of CCM2, Smurf1-mediated RhoA degradation is reduced, leading to RhoA accumulation and increased ROCK activity [78]. Depletion of PDCD10 and its binding partners STK25, STRIP1/FAM40A, STRIP2/FAM40B, and RIPTOR/FAM65A all increase MLC phosphorylation, indicating PDCD10 may affect RhoA-ROCK activity through these proteins [19,30,65]. The enhanced RhoA-ROCK signaling is a critical component of CCM pathogenesis, which is further detailed below.

Another relatively well understood CCM-regulated pathway is the MEKK3 signaling. As discussed above, CCM2 directly interacts with MEKK3 [49]. Both *Krit1* and *Ccm2* deletion leads to activation of the MEKK3-MEK5-ERK5-KLF2/4 signaling cascade, causing increased Adamts4/5 expression [57,79,80]. These changes disrupt both embryonic cardiac development and promote CCM-like lesion formation in neonatal mice [79,80]. Consistent with the findings that CCM2 negatively regulates MEKK3, and MEKK3 is required for immune related receptor signaling [81–84], MEKK3 activating ligands lipopolysaccharide (LPS), IL-1 $\beta$ , and pI:pC can all promote CCM-like lesion formation [85]. There is some evidence that aberrantly activated MEKK3 signaling can lead to increased RhoA-ROCK signaling, but the exact mechanism for this potential crosstalk and its contribution to CCM disease need to be further elucidated [79,80,85,86].

CCM proteins have also been implicated in cell death regulation. The *C. elegans* *KRIT1* ortholog *kri-1* is required to promote irradiation-induced germ cell death through a cell-nonautonomous fashion [25], while in neuroblastoma cells, CCM2 is critical for the TrkA receptor tyrosine kinase to induce tumor cell death [87,88]. As its name suggests, PDCD10 has also been associated with apoptosis regulation. In endothelial cells, overexpression of PDCD10 promotes endothelial apoptosis, and in cardiomyocytes, PDCD10 expression is required for ischemic reperfusion injury-induced cell death [89,90]. However, the exact effect of PDCD10 on apoptosis is still under debate. For example, PDCD10 is up-regulated during oxidative stress, but one report suggested such upregulation promotes tumor cell survival, while another report suggested such upregulation enhances apoptosis [91,92]. Thus, how CCM proteins affect cell death and proliferation to impact human health and disease remains to be further explored.

## 6. CCM Proteins Participate in Endothelial Barrier Maintenance and Regulation

Early morphological studies showed that CCM lesions are lined by altered endothelial cells with disrupted cell–cell connections, including tight junctions [93,94]. Using MRI based in vivo permeability measurements, it is now clear that CCM lesions have increased vascular permeability [95,96]. In white matter regions away from CCM lesions, patients with familial CCM disease (harboring a germline mutation) have higher baseline permeability than patients with sporadic disease, indicating CCM mutations globally affect blood–brain barrier function [95,96]. Furthermore, baseline brain white matter vascular permeability can be used to distinguish familial CCM patients with non-aggressive and aggressive disease, and between stable and non-stable CCM disease [95,96]. These data suggest blood–brain barrier defect regulates CCM clinical disease presentation.

Consistent with patient-based studies, cell culture and mouse studies demonstrated how CCM proteins may affect endothelial barrier function. All three CCM proteins can limit RhoA-ROCK signaling in endothelial cells, although PDCD10 may use a mechanism distinctive of KRIT1 and CCM2 [19,54,65]. The small GTPase RhoA and the other two CCM protein binding small GTPases Rac1

and Cdc42 are cytoskeletal regulators that control barrier function [97–99]. In the case of RhoA, its effector ROCK can either directly or indirectly induce MLC phosphorylation, leading to perijunctional actomyosin contraction, which in turn causes intercellular junction remodeling to increase paracellular permeability [100]. Indeed, decreased KRIT1, CCM2 and PDCD10 expression all promote MLC phosphorylation, stress fiber formation, junctional protein redistribution, and barrier dysfunction in endothelial cells [19,34,54,101].

In addition to maintaining baseline endothelial barrier, KRIT1 also participates in endothelial barrier regulation. While tumor necrosis factor (TNF) increased arteriole and venule permeability in wild type mice, it failed to induce barrier loss in *Krit1* heterozygous knockout mice [101,102]. In contrast, histamine-induced vascular permeability increase occurred normally in *Krit1* heterozygous knockout mice [101,102]. However, another report suggests KRIT1 is required for preservation of endothelial barrier following stimuli [103]. KRIT1 depletion in cultured endothelial cells attenuated prostacyclin-induced perijunctional F-actin accumulation and tightening of endothelial barrier and enhanced cyclic stretch-induced Rho activation and endothelial barrier disruption [103]. In vivo studies further showed that *Krit1* heterozygous knockout exacerbated barrier loss induced by combined treatment of high tidal volume mechanical ventilation and TRAP6, a thrombin receptor activating peptide. This treatment also increased protein and cell content of bronchoalveolar lavage fluid, indicating partial KRIT1 loss participates in lung damage [103]. These data suggest KRIT1 may participate in endothelial barrier regulation in a stimulus-dependent manner and contribute to endothelial dysfunction-related diseases.

Because of the robust ROCK activation in CCM depleted endothelial cells, ROCK became a leading target for novel CCM therapy. ROCK inhibition not only reverses CCM depletion-induced stress fiber formation and barrier loss in vitro but also limits *Ccm* deletion-induced loss of endothelial barrier function in vivo [19,34,54,101]. Pharmacological studies further show that ROCK inhibition by fasudil, atorvastatin, and a newly identified ROCK2 specific inhibitor limits CCM-like lesion formation in multiple mouse models of CCM [104–106], highlighting ROCK inhibition may be a valid therapy for CCM disease. This proof of concept is currently being tested in a clinical trial (NCT02603328) [107].

Besides RhoA-ROCK signaling, additional cellular processes have been implicated for CCM proteins to regulate endothelial barrier. Vascular endothelial growth factor (VEGF) not only promotes endothelial growth, but also increases endothelial permeability [108]. It has been demonstrated that loss of KRIT1 and PDCD10, but not CCM2, increases VEGF production in endothelial cells, and VEGF in turn acts on VEGFR2 to increase endothelial permeability [109]. However, existing evidence also suggests that PDCD10 is required for proper VEGFR2 signaling [35], indicating the relationship between CCM proteins and VEGF and its signaling may be complex. In KRIT1 depleted cells or heterozygous knockout mice, endothelial reactive oxygen species (ROS) production is elevated, at least partially, through upregulated NAPDH oxidase expression [102,110]. When an endothelial targeting ROS scavenger was used, the increased vascular permeability was reduced in KRIT1 deficient mice, demonstrating ROS production also plays a role for KRIT1 to regulate endothelial barrier [102]. However, the molecular mechanisms for ROS to affect barrier function in endothelium, in the presence or absence of KRIT1, remain to be elucidated.

## 7. Tight Junctions and CCM Disease

One of the major determinants of the endothelial barrier is the tight junction. In contrast to well demarcated tight junction, adherens junction, and gap junction domains within the apical junctional complex of epithelial cells, these domains are frequently mixed at cell–cell contact sites between endothelial cells [111]. Such junctions can vary significantly in endothelial cells of different origins. Microvascular endothelial cell bodies can have a thickness of 0.3  $\mu\text{m}$ , with cell–cell junction depth of ~0.5–0.9  $\mu\text{m}$ , while endothelial cells from arteries and high endothelial venules the cell–cell contact sites may reach 3–10  $\mu\text{m}$  in height [111]. In the brain, the endothelial cells, pericytes at the abluminal side of endothelial cells, and astrocyte end feet together form the neurovascular unit to create the

highly impermeable blood–brain barrier [112]. At the endothelial junctional complex, the adherens junction component VE-cadherin provides adhesive force at the cell–cell junctions, and the tight junction proteins are critical for limiting permeability between individual endothelial cells.

The tight junction seals the paracellular space between individual cavity lining cells and is created and maintained by a large number of transmembrane proteins. The four-transmembrane-domain-containing claudin family consists of more than 25 members in mammals. Some of the claudins (including claudin-1, -3, -5) are barrier forming, while some claudin family members are forming size and charge selective pores that allow charged ions and small molecules to pass (including claudin-2, -10, -15) [113]. In the brain microvascular endothelium, the most dominantly expressed claudin is the barrier forming claudin-5 [114,115]. Although claudin-5 is not required for brain microvascular endothelial tight junction organization, its knockout increased brain microvascular permeability, leading to neonatal death [116]. The four-transmembrane domain-containing tight-junction-associated MARVEL protein (TAMP) family contains occludin, tricellulin, and marveld3 [117], and these proteins generally impact macromolecular permeability [118,119]. Occludin knockout itself does not disrupt normal epithelial tight junction organization, but causes brain calcification, particularly around small vessels [120]. Patients with homozygous recessive occludin mutations have a more severe brain phenotype, with band-like calcification with simplified gyration and polymicrogyria [121]. This suggests occludin plays a critical role in brain development, likely through affecting brain endothelial function. Additional tight junction proteins belong to the immunoglobulin superfamily of proteins with a single transmembrane domain (e.g., junctional adhesion molecule A, JAM-A and Coxsackie and adenovirus receptor, CAR) and popeye family of proteins with three transmembrane domains (Popdc1/Bves). In the intestine, JAM-A maintains proper epithelial macromolecular barrier function and limits intestinal inflammation [122,123], and endothelial JAM-A promotes leukocyte transmigration [73,124]. Similarly, CAR participates in epithelial barrier maintenance [125], and CAR affects shear stress induced endothelial immune response [126].

Multiple plaque proteins concentrate at the cytoplasmic side of the tight junction. These proteins typically bind to multiple transmembrane tight junction proteins, other tight junction plaque proteins, and the cytoskeleton, thus stabilize tight junction organization. Zonula occludens (ZO) family proteins (ZO-1, -2, -3) is a well-studied family of tight junction plaque proteins [127]. They can bind to almost all transmembrane tight junction proteins, heterodimerize among different ZO proteins, and associate with the actin cytoskeleton [127]. ZO-1 knockout mice are embryonic lethal, with defects in vascular endothelial cells [128], a finding supported by in vitro endothelial cell studies [129]. Cingulin family is another group of tight junction plaque proteins (cingulin, paracingulin/cingulin-like/JACOP) that can interact with occludin, JAM-A, ZO proteins, myosin and actin filaments, which are also required for proper endothelial function, including brain endothelial barrier function [130,131].

Many CCM affected signaling events can regulate the tight junction. As discussed above, Rho-ROCK signaling increases MLC phosphorylation to impact actomyosin contraction, which in turn regulates tight junction protein expression and localization [132–135]. In addition, ROCK can directly phosphorylate occludin and claudin-5, and such phosphorylation events are associated with blood brain barrier dysfunction [136]. Interaction between endothelial cells and basement membrane induces  $\beta$ 1-integrin engagement, increases MLC phosphorylation in an MLC kinase and ROCK -dependent fashion to promote claudin-5, occludin, and ZO-1 reorganization at the cell–cell junction [137]. This pathway is likely affected by CCM proteins through KRIT1 binding to the  $\beta$ 1-integrin signaling inhibitor ICAP-1, a protein that can also bind to ROCK [138–140]. The KRIT1 binding small GTPase Rap1 enhances tight junction protein localization at endothelial cell–cell contact sites and promotes endothelial barrier function [141]. Consistent with this, the Rap1 activating guanine-nucleotide-exchange factor EPAC also maintains endothelial barrier, prevents VEGF and TNF-induced endothelial permeability increase, and limits claudin-5, occludin, and ZO-1 disorganization at the cell–cell junctions [142]. Another small GTPase, Rasip1, is an effector of Rap1, which down-regulates RhoA activity through ArhGAP29 [143–145]. Rasip1 can also interact with the KRIT1 interacting transmembrane protein Heg1 [146], thus KRIT1 can bring Rasip1 and Rap1

close to one another through KRIT1-Heg1 interaction. Furthermore, engagement between individual JAM-A molecules at intercellular junctions can activate Rap1 to preserve epithelial and endothelial barrier functions through JAM-A interaction with the tight junction protein ZO-2, the adherens junction protein AF-6, and PDZ-GEF1/2 [147,148]. These data provide a complex signaling network for the tight junction proteins (JAM-A and ZO-2) and other cell surface adhesion molecules ( $\beta$ 1-integrin and Heg1) to affect CCM-dependent cellular signaling pathways to impact tight junction barrier.

Consistent with such findings, resected CCM lesions have reduced occludin, claudin-5, and ZO-1 staining, and decreased tight junction protein expression has been associated with the tendency for local bleeding and edema [149,150]. In *Krit1* deleted brain microvascular endothelial cells, loss of claudin-5 and ZO-1 protein can be readily observed by immunofluorescent staining and western blot [151], and PDCD10 depletion in brain microvascular endothelial cells decreases claudin-5, occludin, and ZO-1 protein abundance, likely through an ERK1/2 and cortactin-dependent process [152]. A recent study suggests PDCD10 depletion in brain endothelial cells upregulates gap junction protein connexin 43 expression and increases gap junction communication, a phenomenon only minimally seen in KRIT1 or CCM2 depleted cells [153]. Such changes are associated with redistribution of tight junction proteins to gap junctions, and the connexin 43 gap junction inhibitor GAP27 can reverse tight junction disorganization and decrease endothelial barrier permeability in PDCD10 depleted cells [153]. These indicate increased gap junction function participates in tight junction disruption in CCM3 disease. With such findings, it is likely that tight junction protein disorganization downstream of RhoA-ROCK signaling and gap junction is a key effector driving CCM pathogenesis, and it is possible that normalizing tight junction protein expression and localization at the cell–cell junctions can limit CCM development or lesional bleeding. However, the specific roles of tight junction proteins in CCM initiation and progression remain to be formally tested, likely by using transgenic or knockout mice.

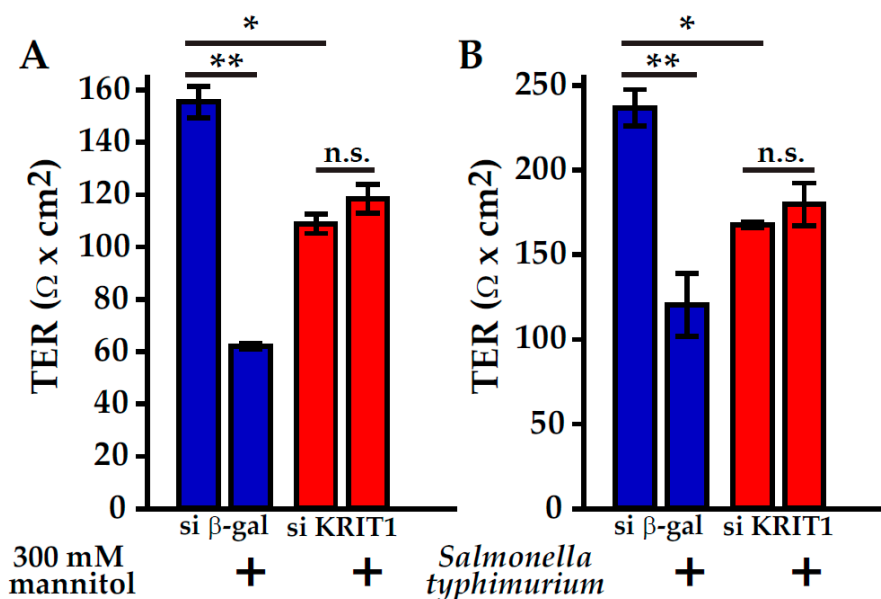
## 8. CCM Proteins Impact Intestinal Homeostasis

In contrast to a plethora of studies on the function of CCM proteins in endothelial cells, we just start to appreciate their roles in epithelial cells. By investigating the effects of KRIT1 in  $\beta$ -catenin signaling, Glading and Ginsberg revealed KRIT1 depletion increases  $\beta$ -catenin transcriptional activity in both endothelial and epithelial cells [154]. This is functionally significant, as *Apc* mutation induced more intestinal polyp formation in *Krit1* heterozygous knockout mice with increased intestinal epithelial nuclear  $\beta$ -catenin accumulation [154]. A recent *C. elegans* study suggested KRIT1 can also form a complex with CCM2 to promote zinc transporter expression to cause  $Zn^{2+}$  storage in the intestinal granules, indicating KRIT1 may also impact intestinal epithelial transport [26].

Despite these findings, it was not known if CCM proteins can regulate barrier function in epithelium. Our group addressed this question by studying KRIT1 function in intestinal epithelial Caco-2 cells, a well characterized model to study intestinal epithelial barrier maintenance and regulation [155]. In this model, KRIT1 depletion caused a reduction of epithelial barrier function, characterized by selectively increased relative permeability of small cations, including  $Na^+$ , to the anion  $Cl^-$  [155]. Such a change is consistent with decreased expression of claudin-1, a tight junction protein that limits small ion permeability, in KRIT1-depleted Caco-2 cells [155,156]. In contrast to the effect of KRIT1 on endothelial cells, intestinal epithelial KRIT1 depletion does not induce MLC phosphorylation, and ROCK inhibition does not reverse KRIT1 depletion-induced barrier loss [155]. This indicates that KRIT1 regulates epithelial and endothelial barrier function through distinct mechanisms. In Caco-2 monolayers, decreasing actomyosin contractility by inhibiting either ROCK or myosin ATPase activity both reduced epithelial barrier function, along with elevated permeability to both small and large cations. These changes are inhibited in KRIT1-depleted Caco-2 monolayers, indicating KRIT1 also participates in actomyosin contraction-induced barrier regulation [155]. Furthermore, KRIT1-depleted epithelial monolayers are resistant to osmotic stress and enteric pathogen *Salmonella typhimurium*-induced epithelial barrier regulation (Figure 4), suggesting KRIT1 may impact gastrointestinal pathophysiology. With the above data, it is surprising to find



that KRIT1 depletion exacerbates TNF-induced epithelial barrier loss. Mechanistic studies suggest this loss is due to aberrantly activated apoptosis in KRIT1-depleted monolayers, but we currently do not know how this occurs [155]. Nevertheless, these data suggest KRIT1 regulates epithelial barrier function through at least two distinct pathways: one is actomyosin and tight junction-dependent barrier maintenance and regulation, and the other is tight junction-independent epithelial apoptosis. Such findings not only point to a role for KRIT1 to mediate the crosstalk between distinctive epithelial barrier regulation pathways, but also suggest KRIT1 may coordinate tight junction barrier maintenance, regulation, and epithelial apoptosis to impact intestinal disease development.



**Figure 4.** KRIT1 depletion limits pathophysiological stimuli-induced epithelial barrier dysfunction. KRIT1 depletion by stable transfection of a siRNA expressing plasmid decreased epithelial barrier function (A-B, assessed by transepithelial resistant (TER) measurements) in differentiated Caco-2 intestinal epithelial monolayers grown on semi-permeable Transwell inserts [155]. (A) Hyperosmotic stress induced by including 300 mM mannitol in Hank's balanced salt solution caused barrier loss in control (siRNA against  $\beta$ -galactosidase transfected, blue bars) Caco-2 monolayers. In contrast, no barrier loss was induced in KRIT1 depleted (siRNA against KRIT1 transfected, red bars) Caco-2 monolayers. (B) *Salmonella typhimurium* (strain ATCC 14028) infection by including bacteria in apical culture media caused barrier loss in control, but not KRIT1 depleted Caco-2 monolayers. Mean with standard error (triplicate samples) are shown. One-way ANOVA analysis with Bonferroni correction was used (\*  $p < 0.05$ , \*\*  $p < 0.01$ ).

An understanding of the potential contribution of the gastrointestinal tract to CCM disease development was stemmed from the surprising finding that neonatal mice with the same induced endothelial specific *Ccm* deletion can have drastically different CCM-like lesion burdens when they were raised in different animal facilities [85]. Fecal microbiome analysis showed that mice susceptible to *Ccm* deletion-induced lesion formation have a Gram-negative bacteria rich microbiome relative to resistant mice. Such a fecal microbiome provides the cell wall product LPS as the ligand to activate the endothelial TLR4-MEKK3-KLR2/4 signaling pathway to promote CCM development [85]. This view is further supported by the finding that germ-free mice and mice treated with antibiotics have lower lesion burden [85]. Because familial CCM patients have genetic mutations of *CCM* genes in all organs and cell types, this study also raised the possibility that CCM could function in the gastrointestinal tract to influence CCM disease development. Indeed, when *Pdcd10* was deleted in the intestinal epithelium, it promoted endothelial *Pdcd10* deletion-induced lesion formation [157]. In contrast, intestinal epithelial specific deletion of *Krit1* does not impact endothelial *Krit1* deletion-induced lesion

formation [157]. This finding may at least partially explain why patients with *PDCD10* mutations have a more aggressive CCM disease than patients with *KRIT1* mutations. In addition to impacting CCM-like disease development, constitutive intestinal epithelial specific *Pdcd10* deletion alone shortened mouse life span, reduced intestinal mucus layer thickness, enlarged goblet cells, and caused intestinal inflammation [157]. These findings indicate *PDCD10* is required for intestinal homeostasis and may impact intestinal disease development, which needs to be further investigated.

## 9. Conclusions and Future Directions

Through their many binding partners, CCM proteins impact many cellular events. The most prominent effect of CCM proteins on cellular signaling is their ability to limit RhoA-ROCK activity and MEKK3-MEK5-ERK5-KLF signaling, events that are important for endothelial function and CCM lesion formation. Despite such detailed understanding, we are just starting to grasp the full spectrum of CCM protein functions. Understanding how CCM proteins affect endothelial function through a variety of pathways to impact CCM disease and identifying therapies to preserve and promote normal CCM function in the brain remain top priorities for CCM research. With the finding that CCM proteins also function in intestinal epithelial cells, it becomes pressing to understand CCM protein functions in the gut, in the context of both CCM disease and other intestinal disorders. It also points to a need to understand CCM protein signaling in other cell types and organs. Such studies will not only advance our understanding of CCM protein biology, but also provide targets to modulate cellular functions to benefit human health.

**Author Contributions:** Initial draft, S.W., Y.L., and L.S.; contribution of figures, Y.L., S.P.P., C.R.W., and L.S.; draft revision, S.W., Y.L., S.P.P., C.R.W., I.A.A., and L.S. All authors have read and agreed to the published version of the manuscript.

**Funding:** The original research performed by the author group was partially supported by United States Department of Defense Congress Directed Medical Research Program Discovery Award W81XWH-18-1-0501 (to L.S.), National Institutes of Health grants K01 DK092381 (to L.S.), P30 DK042086 (to L.S.), P01 NS092521 (to I.A.A.), and UL1 TR001863 (to I.A.A.). The University of Chicago Safadi Clinical and Translational Neuroscience Awards (to L.S. and S.P.), American Association of Neurological Surgeons/Congress of Neurological Surgeons Joint Cerebrovascular Section Robert J. Dempsey MD Cerebrovascular Research Grant (to S.P.).

**Acknowledgments:** We thank Wenli Dai, Li Dong, and Jimian Yu for comments and proofreading of the manuscript.

**Conflicts of Interest:** The authors declare no conflict of interest.

## Abbreviations

CCM	cerebral cavernous malformation
EPAC	Rap1 guanine-nucleotide-exchange factor
FAT	focal adhesion targeting
FERM	band 4.1, ezrin, radixin, moesin
GCK	germinal center kinase
HHD	harmonin-homology domain
JAM	junctional adhesion molecule
KRIT1	Krev interaction trapped protein-1
LPS	lipopolysaccharide
MLC	myosin regulatory light chain
PDCD10	programmed cell death 10
PTB	phosphotyrosine-binding domain
ROCK	Rho-associated coiled-coil kinase
ROS	reactive oxygen species
Smurf1	Smad ubiquitin regulatory factor 1
STRIPAK	striatin interacting phosphatase and kinase
TER	transepithelial resistance
TNF	tumor necrosis factor
VEGF	vascular endothelial growth factor
ZO	zonula occludens

## References

1. Awad, I.A.; Polster, S.P. Cavernous angiomas: Deconstructing a neurosurgical disease. *J. Neurosurg.* **2019**, *131*, 1–13. [[CrossRef](#)]
2. Morris, Z.; Whiteley, W.N.; Longstreth, W.T., Jr.; Weber, F.; Lee, Y.C.; Tsushima, Y.; Alphas, H.; Ladd, S.C.; Warlow, C.; Wardlaw, J.M.; et al. Incidental findings on brain magnetic resonance imaging: Systematic review and meta-analysis. *Br. Med. J.* **2009**, *339*, b3016. [[CrossRef](#)]
3. Moore, S.A.; Brown, R.D., Jr.; Christianson, T.J.; Flemming, K.D. Long-term natural history of incidentally discovered cavernous malformations in a single-center cohort. *J. Neurosurg.* **2014**, *120*, 1188–1192. [[CrossRef](#)]
4. Flemming, K.D.; Graff-Radford, J.; Aakre, J.; Kantarci, K.; Lanzino, G.; Brown, R.D., Jr.; Mielke, M.M.; Roberts, R.O.; Kremers, W.; Knopman, D.S.; et al. Population-Based Prevalence of Cerebral Cavernous Malformations in Older Adults: Mayo Clinic Study of Aging. *JAMA Neurol.* **2017**, *74*, 801–805. [[CrossRef](#)] [[PubMed](#)]
5. Otten, P.; Pizzolato, G.P.; Rilliet, B.; Berney, J. [131 cases of cavernous angioma (cavernomas) of the CNS, discovered by retrospective analysis of 24,535 autopsies]. *Neurochirurgie* **1989**, *35*, 82–83, 128–131.
6. Flemming, K.D.; Link, M.J.; Christianson, T.J.; Brown, R.D., Jr. Prospective hemorrhage risk of intracerebral cavernous malformations. *Neurology* **2012**, *78*, 632–636. [[CrossRef](#)] [[PubMed](#)]
7. Al-Shahi Salman, R.; Berg, M.J.; Morrison, L.; Awad, I.A. Hemorrhage from cavernous malformations of the brain: Definition and reporting standards. Angioma Alliance Scientific Advisory Board. *Stroke* **2008**, *39*, 3222–3230. [[CrossRef](#)] [[PubMed](#)]
8. Gunel, M.; Awad, I.A.; Anson, J.; Lifton, R.P. Mapping a gene causing cerebral cavernous malformation to 7q11.2-q21. *Proc. Natl. Acad. Sci. USA* **1995**, *92*, 6620–6624. [[CrossRef](#)] [[PubMed](#)]
9. Marchuk, D.A.; Gallione, C.J.; Morrison, L.A.; Clericuzio, C.L.; Hart, B.L.; Kosofsky, B.E.; Louis, D.N.; Gusella, J.F.; Davis, L.E.; Prenger, V.L. A locus for cerebral cavernous malformations maps to chromosome 7q in two families. *Genomics* **1995**, *28*, 311–314. [[CrossRef](#)] [[PubMed](#)]
10. Craig, H.D.; Gunel, M.; Cepeda, O.; Johnson, E.W.; Ptacek, L.; Steinberg, G.K.; Ogilvy, C.S.; Berg, M.J.; Crawford, S.C.; Scott, R.M.; et al. Multilocus linkage identifies two new loci for a mendelian form of stroke, cerebral cavernous malformation, at 7p15-13 and 3q25.2-27. *Hum. Mol. Genet.* **1998**, *7*, 1851–1858. [[CrossRef](#)]
11. Laberge-le Couteulx, S.; Jung, H.H.; Labauge, P.; Houtteville, J.P.; Lescoat, C.; Cecillon, M.; Marechal, E.; Joutel, A.; Bach, J.F.; Tournier-Lasserre, E. Truncating mutations in *CCM1*, encoding *KRIT1*, cause hereditary cavernous angiomas. *Nat. Genet.* **1999**, *23*, 189–193. [[CrossRef](#)] [[PubMed](#)]
12. Sahoo, T.; Johnson, E.W.; Thomas, J.W.; Kuehl, P.M.; Jones, T.L.; Dokken, C.G.; Touchman, J.W.; Gallione, C.J.; Lee-Lin, S.Q.; Kosofsky, B.; et al. Mutations in the gene encoding *KRIT1*, a Krev-1/rap1a binding protein, cause cerebral cavernous malformations (*CCM1*). *Hum. Mol. Genet.* **1999**, *8*, 2325–2333. [[CrossRef](#)] [[PubMed](#)]
13. Liquori, C.L.; Berg, M.J.; Siegel, A.M.; Huang, E.; Zawistowski, J.S.; Stoffer, T.; Verlaan, D.; Balogun, F.; Hughes, L.; Leedom, T.P.; et al. Mutations in a gene encoding a novel protein containing a phosphotyrosine-binding domain cause type 2 cerebral cavernous malformations. *Am. J. Hum. Genet.* **2003**, *73*, 1459–1464. [[CrossRef](#)] [[PubMed](#)]
14. Denier, C.; Goutagny, S.; Labauge, P.; Krivosic, V.; Arnoult, M.; Cousin, A.; Benabid, A.L.; Comoy, J.; Frerebeau, P.; Gilbert, B.; et al. Mutations within the *MGC4607* gene cause cerebral cavernous malformations. *Am. J. Hum. Genet.* **2004**, *74*, 326–337. [[CrossRef](#)] [[PubMed](#)]
15. Guclu, B.; Ozturk, A.K.; Pricola, K.L.; Bilguvar, K.; Shin, D.; O’Roak, B.J.; Gunel, M. Mutations in apoptosis-related gene, *PDCD10*, cause cerebral cavernous malformation 3. *Neurosurgery* **2005**, *57*, 1008–1013. [[CrossRef](#)] [[PubMed](#)]
16. Bergametti, F.; Denier, C.; Labauge, P.; Arnoult, M.; Boetto, S.; Clanet, M.; Coubes, P.; Echenne, B.; Ibrahim, R.; Irthum, B.; et al. Mutations within the programmed cell death 10 gene cause cerebral cavernous malformations. *Am. J. Hum. Genet.* **2005**, *76*, 42–51. [[CrossRef](#)]
17. Zafar, A.; Quadri, S.A.; Farooqui, M.; Ikram, A.; Robinson, M.; Hart, B.L.; Mabray, M.C.; Vigil, C.; Tang, A.T.; Kahn, M.L.; et al. Familial Cerebral Cavernous Malformations. *Stroke* **2019**, *50*, 1294–1301. [[CrossRef](#)]
18. Denier, C.; Labauge, P.; Bergametti, F.; Marchelli, F.; Riant, F.; Arnoult, M.; Maciazek, J.; Vicaut, E.; Brunereau, L.; Tournier-Lasserre, E.; et al. Genotype-phenotype correlations in cerebral cavernous malformations patients. *Ann. Neurol.* **2006**, *60*, 550–556. [[CrossRef](#)]

19. Shenkar, R.; Shi, C.; Rebeiz, T.; Stockton, R.A.; McDonald, D.A.; Mikati, A.G.; Zhang, L.; Austin, C.; Akers, A.L.; Gallione, C.J.; et al. Exceptional aggressiveness of cerebral cavernous malformation disease associated with *PDCD10* mutations. *Genet. Med. Off. J. Am. Coll. Med Genet.* **2015**, *17*, 188–196. [[CrossRef](#)]
20. Spiegler, S.; Rath, M.; Paperlein, C.; Felbor, U. Cerebral Cavernous Malformations: An Update on Prevalence, Molecular Genetic Analyses, and Genetic Counselling. *Mol. Syndromol.* **2018**, *9*, 60–69. [[CrossRef](#)]
21. Gault, J.; Shenkar, R.; Recksiek, P.; Awad, I.A. Biallelic somatic and germ line *CCM1* truncating mutations in a cerebral cavernous malformation lesion. *Stroke* **2005**, *36*, 872–874. [[CrossRef](#)] [[PubMed](#)]
22. Akers, A.L.; Johnson, E.; Steinberg, G.K.; Zabramski, J.M.; Marchuk, D.A. Biallelic somatic and germline mutations in cerebral cavernous malformations (CCMs): Evidence for a two-hit mechanism of CCM pathogenesis. *Hum. Mol. Genet.* **2009**, *18*, 919–930. [[CrossRef](#)] [[PubMed](#)]
23. McDonald, D.A.; Shi, C.; Shenkar, R.; Gallione, C.J.; Akers, A.L.; Li, S.; De Castro, N.; Berg, M.J.; Corcoran, D.L.; Awad, I.A.; et al. Lesions from patients with sporadic cerebral cavernous malformations harbor somatic mutations in the *CCM* genes: Evidence for a common biochemical pathway for CCM pathogenesis. *Hum. Mol. Genet.* **2014**, *23*, 4357–4370. [[CrossRef](#)]
24. Berman, J.R.; Kenyon, C. Germ-cell loss extends *C. elegans* life span through regulation of DAF-16 by *kri-1* and lipophilic-hormone signaling. *Cell* **2006**, *124*, 1055–1068. [[CrossRef](#)] [[PubMed](#)]
25. Ito, S.; Greiss, S.; Gartner, A.; Derry, W.B. Cell-Nonautonomous Regulation of *C. elegans* Germ Cell Death by *kri-1*. *Curr. Biol.* **2010**, *20*, 333–338. [[CrossRef](#)] [[PubMed](#)]
26. Chapman, E.M.; Lant, B.; Ohashi, Y.; Yu, B.; Schertzberg, M.; Go, C.; Dogra, D.; Koskimaki, J.; Girard, R.; Li, Y.; et al. A conserved CCM complex promotes apoptosis non-autonomously by regulating zinc homeostasis. *Nat. Commun.* **2019**, *10*, 1791. [[CrossRef](#)]
27. Pal, S.; Lant, B.; Yu, B.; Tian, R.L.; Tong, J.F.; Krieger, J.R.; Moran, M.F.; Gingras, A.C.; Derry, W.B. CCM-3 Promotes *C. elegans* Germline Development by Regulating Vesicle Trafficking Cytokinesis and Polarity. *Curr. Biol.* **2017**, *27*, 868–876. [[CrossRef](#)]
28. Lant, B.; Yu, B.; Goudreault, M.; Holmyard, D.; Knight, J.D.R.; Xu, P.; Zhao, L.; Chin, K.; Wallace, E.; Zhen, M.; et al. CCM-3/STRIPAK promotes seamless tube extension through endocytic recycling. *Nat. Commun.* **2015**, *6*, 6449. [[CrossRef](#)]
29. Hogan, B.M.; Bussmann, J.; Wolburg, H.; Schulte-Merker, S. *Ccm1* cell autonomously regulates endothelial cellular morphogenesis and vascular tubulogenesis in zebrafish. *Hum. Mol. Genet.* **2008**, *17*, 2424–2432. [[CrossRef](#)]
30. Zheng, X.J.; Xu, C.; Di Lorenzo, A.; Kleaveland, B.; Zou, Z.Y.; Seiler, C.; Chen, M.; Cheng, L.; Xiao, J.P.; He, J.; et al. CCM3 signaling through sterile 20-like kinases plays an essential role during zebrafish cardiovascular development and cerebral cavernous malformations. *J. Clin. Investig.* **2010**, *120*, 2795–2804. [[CrossRef](#)]
31. Plummer, N.W.; Gallione, C.J.; Srinivasan, S.; Zawistowski, J.S.; Louis, D.N.; Marchuk, D.A. Loss of p53 sensitizes mice with a mutation in *Ccm1* (*KRIT1*) to development of cerebral vascular malformations. *Am. J. Pathol.* **2004**, *165*, 1509–1518. [[CrossRef](#)]
32. McDonald, D.A.; Shenkar, R.; Shi, C.; Stockton, R.A.; Akers, A.L.; Kucherlapati, M.H.; Kucherlapati, R.; Brainer, J.; Ginsberg, M.H.; Awad, I.A.; et al. A novel mouse model of cerebral cavernous malformations based on the two-hit mutation hypothesis recapitulates the human disease. *Hum. Mol. Genet.* **2011**, *20*, 211–222. [[CrossRef](#)] [[PubMed](#)]
33. Whitehead, K.J.; Plummer, N.W.; Adams, J.A.; Marchuk, D.A.; Li, D.Y. *Ccm1* is required for arterial morphogenesis: Implications for the etiology of human cavernous malformations. *Development* **2004**, *131*, 1437–1448. [[CrossRef](#)]
34. Whitehead, K.J.; Chan, A.C.; Navankasattusas, S.; Koh, W.; London, N.R.; Ling, J.; Mayo, A.H.; Drakos, S.G.; Jones, C.A.; Zhu, W.; et al. The cerebral cavernous malformation signaling pathway promotes vascular integrity via Rho GTPases. *Nat. Med.* **2009**, *15*, 177–184. [[CrossRef](#)]
35. He, Y.; Zhang, H.; Yu, L.; Gunel, M.; Boggon, T.J.; Chen, H.; Min, W. Stabilization of VEGFR2 signaling by cerebral cavernous malformation 3 is critical for vascular development. *Sci. Signal.* **2010**, *3*, ra26. [[CrossRef](#)] [[PubMed](#)]
36. Boulday, G.; Rudini, N.; Maddaluno, L.; Blecon, A.; Arnould, M.; Gaudric, A.; Chapon, F.; Adams, R.H.; Dejana, E.; Tournier-Lasserre, E. Developmental timing of CCM2 loss influences cerebral cavernous malformations in mice. *J. Exp. Med.* **2011**, *208*, 1835–1847. [[CrossRef](#)]



37. Mleynek, T.M.; Chan, A.C.; Redd, M.; Gibson, C.C.; Davis, C.T.; Shi, D.S.; Chen, T.; Carter, K.L.; Ling, J.; Blanco, R.; et al. Lack of CCM1 induces hypersprouting and impairs response to flow. *Hum. Mol. Genet.* **2014**, *23*, 6223–6234. [[CrossRef](#)]
38. Chan, A.C.; Drakos, S.G.; Ruiz, O.E.; Smith, A.C.; Gibson, C.C.; Ling, J.; Passi, S.F.; Stratman, A.N.; Sacharidou, A.; Revelo, M.P.; et al. Mutations in 2 distinct genetic pathways result in cerebral cavernous malformations in mice. *J. Clin. Investig.* **2011**, *121*, 1871–1881. [[CrossRef](#)]
39. Cunningham, K.; Uchida, Y.; O'Donnell, E.; Claudio, E.; Li, W.; Soneji, K.; Wang, H.; Mukoyama, Y.S.; Siebenlist, U. Conditional deletion of *Ccm2* causes hemorrhage in the adult brain: A mouse model of human cerebral cavernous malformations. *Hum. Mol. Genet.* **2011**, *20*, 3198–3206. [[CrossRef](#)]
40. Detter, M.R.; Snellings, D.A.; Marchuk, D.A. Cerebral Cavernous Malformations Develop Through Clonal Expansion of Mutant Endothelial Cells. *Circ. Res.* **2018**, *123*, 1143–1151. [[CrossRef](#)]
41. Serebriiskii, I.; Estojak, J.; Sonoda, G.; Testa, J.R.; Golemis, E.A. Association of Krev-1/rap1a with Krit1, a novel ankyrin repeat-containing protein encoded by a gene mapping to 7q21-22. *Oncogene* **1997**, *15*, 1043–1049. [[CrossRef](#)] [[PubMed](#)]
42. Liu, W.; Draheim, K.M.; Zhang, R.; Calderwood, D.A.; Boggon, T.J. Mechanism for KRIT1 release of ICAP1-mediated suppression of integrin activation. *Mol. Cell* **2013**, *49*, 719–729. [[CrossRef](#)] [[PubMed](#)]
43. Zawistowski, J.S.; Serebriiskii, I.G.; Lee, M.F.; Golemis, E.A.; Marchuk, D.A. KRIT1 association with the integrin-binding protein ICAP-1: A new direction in the elucidation of cerebral cavernous malformations (CCM1) pathogenesis. *Hum. Mol. Genet.* **2002**, *11*, 389–396. [[CrossRef](#)]
44. Kleaveland, B.; Zheng, X.; Liu, J.J.; Blum, Y.; Tung, J.J.; Zou, Z.; Sweeney, S.M.; Chen, M.; Guo, L.; Lu, M.M.; et al. Regulation of cardiovascular development and integrity by the heart of glass-cerebral cavernous malformation protein pathway. *Nat. Med.* **2009**, *15*, 169–176. [[CrossRef](#)] [[PubMed](#)]
45. Gingras, A.R.; Liu, J.J.; Ginsberg, M.H. Structural basis of the junctional anchorage of the cerebral cavernous malformations complex. *J. Cell Biol.* **2012**, *199*, 39–48. [[CrossRef](#)]
46. Gingras, A.R.; Puzon-McLaughlin, W.; Ginsberg, M.H. The structure of the ternary complex of Krev interaction trapped 1 (KRIT1) bound to both the Rap1 GTPase and the heart of glass (HEG1) cytoplasmic tail. *J. Biol. Chem.* **2013**, *288*, 23639–23649. [[CrossRef](#)] [[PubMed](#)]
47. Gunel, M.; Laurans, M.S.; Shin, D.; DiLuna, M.L.; Voorhees, J.; Choate, K.; Nelson-Williams, C.; Lifton, R.P. *KRIT1*, a gene mutated in cerebral cavernous malformation, encodes a microtubule-associated protein. *Proc. Natl. Acad. Sci. USA* **2002**, *99*, 10677–10682. [[CrossRef](#)]
48. Fisher, O.S.; Zhang, R.; Li, X.; Murphy, J.W.; Demeler, B.; Boggon, T.J. Structural studies of cerebral cavernous malformations 2 (CCM2) reveal a folded helical domain at its C-terminus. *FEBS Lett.* **2013**, *587*, 272–277. [[CrossRef](#)]
49. Uhlik, M.T.; Abell, A.N.; Johnson, N.L.; Sun, W.; Cuevas, B.D.; Lobel-Rice, K.E.; Horne, E.A.; Dell'Acqua, M.L.; Johnson, G.L. Rac-MEKK3-MKK3 scaffolding for p38 MAPK activation during hyperosmotic shock. *Nat. Cell Biol.* **2003**, *5*, 1104–1110. [[CrossRef](#)]
50. Hilder, T.L.; Malone, M.H.; Bencharit, S.; Colicelli, J.; Haystead, T.A.; Johnson, G.L.; Wu, C.C. Proteomic identification of the cerebral cavernous malformation signaling complex. *J. Proteome Res.* **2007**, *6*, 4343–4355. [[CrossRef](#)]
51. Zhang, J.; Rigamonti, D.; Dietz, H.C.; Clatterbuck, R.E. Interaction between krit1 and malcavernin: Implications for the pathogenesis of cerebral cavernous malformations. *Neurosurgery* **2007**, *60*, 353–359. [[CrossRef](#)] [[PubMed](#)]
52. Zawistowski, J.S.; Stalheim, L.; Uhlik, M.T.; Abell, A.N.; Ancrile, B.B.; Johnson, G.L.; Marchuk, D.A. CCM1 and CCM2 protein interactions in cell signaling: Implications for cerebral cavernous malformations pathogenesis. *Hum. Mol. Genet.* **2005**, *14*, 2521–2531. [[CrossRef](#)] [[PubMed](#)]
53. Draheim, K.M.; Li, X.; Zhang, R.; Fisher, O.S.; Villari, G.; Boggon, T.J.; Calderwood, D.A. CCM2-CCM3 interaction stabilizes their protein expression and permits endothelial network formation. *J. Cell Biol.* **2015**, *208*, 987–1001. [[CrossRef](#)] [[PubMed](#)]
54. Stockton, R.A.; Shenkar, R.; Awad, I.A.; Ginsberg, M.H. Cerebral cavernous malformations proteins inhibit Rho kinase to stabilize vascular integrity. *J. Exp. Med.* **2010**, *207*, 881–896. [[CrossRef](#)]
55. Hilder, T.L.; Malone, M.H.; Johnson, G.L. Hyperosmotic induction of mitogen-activated protein kinase scaffolding. *Methods Enzym.* **2007**, *428*, 297–312. [[CrossRef](#)]

56. Zheng, X.; Xu, C.; Smith, A.O.; Stratman, A.N.; Zou, Z.; Kleaveland, B.; Yuan, L.; Didiku, C.; Sen, A.; Liu, X.; et al. Dynamic regulation of the cerebral cavernous malformation pathway controls vascular stability and growth. *Dev. Cell* **2012**, *23*, 342–355. [[CrossRef](#)]
57. Cullere, X.; Plovie, E.; Bennett, P.M.; MacRae, C.A.; Mayadas, T.N. The cerebral cavernous malformation proteins CCM2L and CCM2 prevent the activation of the MAP kinase MEKK3. *Proc. Natl. Acad. Sci. USA* **2015**, *112*, 14284–14289. [[CrossRef](#)]
58. Rosen, J.N.; Sogah, V.M.; Ye, L.Y.; Mably, J.D. Ccm2-like is required for cardiovascular development as a novel component of the Heg-CCM pathway. *Dev. Biol.* **2013**, *376*, 74–85. [[CrossRef](#)]
59. Li, X.; Zhang, R.; Zhang, H.; He, Y.; Ji, W.; Min, W.; Boggon, T.J. Crystal structure of CCM3, a cerebral cavernous malformation protein critical for vascular integrity. *J. Biol. Chem.* **2010**, *285*, 24099–24107. [[CrossRef](#)]
60. Wang, Y.; Liu, H.; Zhang, Y.; Ma, D. cDNA cloning and expression of an apoptosis-related gene, humanTFAR15 gene. *Sci. China C Life Sci.* **1999**, *42*, 323–329. [[CrossRef](#)]
61. Ma, X.; Zhao, H.; Shan, J.; Long, F.; Chen, Y.; Zhang, Y.; Han, X.; Ma, D. PDCD10 interacts with Ste20-related kinase MST4 to promote cell growth and transformation via modulation of the ERK pathway. *Mol. Biol. Cell* **2007**, *18*, 1965–1978. [[CrossRef](#)] [[PubMed](#)]
62. Ceccarelli, D.F.; Laister, R.C.; Mulligan, V.K.; Kean, M.J.; Goudreault, M.; Scott, I.C.; Derry, W.B.; Chakrabarty, A.; Gingras, A.C.; Sicheri, F. CCM3/PDCD10 heterodimerizes with germinal center kinase III (GCKIII) proteins using a mechanism analogous to CCM3 homodimerization. *J. Biol. Chem.* **2011**, *286*, 25056–25064. [[CrossRef](#)] [[PubMed](#)]
63. Fidalgo, M.; Fraile, M.; Pires, A.; Force, T.; Pombo, C.; Zalvide, J. CCM3/PDCD10 stabilizes GCKIII proteins to promote Golgi assembly and cell orientation. *J. Cell Sci.* **2010**, *123*, 1274–1284. [[CrossRef](#)]
64. Goudreault, M.; D’Ambrosio, L.M.; Kean, M.J.; Mullin, M.J.; Larsen, B.G.; Sanchez, A.; Chaudhry, S.; Chen, G.I.; Sicheri, F.; Nesvizhskii, A.I.; et al. A PP2A phosphatase high density interaction network identifies a novel striatin-interacting phosphatase and kinase complex linked to the cerebral cavernous malformation 3 (CCM3) protein. *Mol. Cell Proteom.* **2009**, *8*, 157–171. [[CrossRef](#)] [[PubMed](#)]
65. Suryavanshi, N.; Furmston, J.; Ridley, A.J. The STRIPAK complex components FAM40A and FAM40B regulate endothelial cell contractility via ROCKs. *BMC Cell Biol.* **2018**, *19*, 26. [[CrossRef](#)] [[PubMed](#)]
66. Gordon, J.; Hwang, J.; Carrier, K.J.; Jones, C.A.; Kern, Q.L.; Moreno, C.S.; Karas, R.H.; Pallas, D.C. Protein phosphatase 2a (PP2A) binds within the oligomerization domain of striatin and regulates the phosphorylation and activation of the mammalian Ste20-Like kinase Mst3. *BMC Biochem.* **2011**, *12*, 54. [[CrossRef](#)] [[PubMed](#)]
67. Voss, K.; Stahl, S.; Schleider, E.; Ullrich, S.; Nickel, J.; Mueller, T.D.; Felbor, U. CCM3 interacts with CCM2 indicating common pathogenesis for cerebral cavernous malformations. *Neurogenetics* **2007**, *8*, 249–256. [[CrossRef](#)]
68. Li, X.; Ji, W.; Zhang, R.; Folta-Stogniew, E.; Min, W.; Boggon, T.J. Molecular recognition of leucine-aspartate repeat (LD) motifs by the focal adhesion targeting homology domain of cerebral cavernous malformation 3 (CCM3). *J. Biol. Chem.* **2011**, *286*, 26138–26147. [[CrossRef](#)]
69. Zhang, Y.; Tang, W.; Zhang, H.; Niu, X.; Xu, Y.; Zhang, J.; Gao, K.; Pan, W.; Boggon, T.J.; Toomre, D.; et al. A network of interactions enables CCM3 and STK24 to coordinate UNC13D-driven vesicle exocytosis in neutrophils. *Dev. Cell* **2013**, *27*, 215–226. [[CrossRef](#)]
70. Dibble, C.F.; Horst, J.A.; Malone, M.H.; Park, K.; Temple, B.; Cheeseman, H.; Barbaro, J.R.; Johnson, G.L.; Bencharit, S. Defining the Functional Domain of Programmed Cell Death 10 through Its Interactions with Phosphatidylinositol-3,4,5-Trisphosphate. *PLoS ONE* **2010**, *5*, e11740. [[CrossRef](#)]
71. Castro, M.; Lavina, B.; Ando, K.; Alvarez-Aznar, A.; Abu Taha, A.; Brakebusch, C.; Dejana, E.; Betsholtz, C.; Gaengel, K. CDC42 Deletion Elicits Cerebral Vascular Malformations via Increased MEKK3-Dependent KLF4 Expression. *Circ. Res.* **2019**, *124*, 1240–1252. [[CrossRef](#)] [[PubMed](#)]
72. Mardakheh, F.K.; Self, A.; Marshall, C.J. RHO binding to FAM65A regulates Golgi reorientation during cell migration. *J. Cell Sci.* **2016**, *129*, 4466–4479. [[CrossRef](#)] [[PubMed](#)]
73. Maddaluno, L.; Rudini, N.; Cuttano, R.; Bravi, L.; Giampietro, C.; Corada, M.; Ferrarini, L.; Orsenigo, F.; Papa, E.; Boulday, G.; et al. EndMT contributes to the onset and progression of cerebral cavernous malformations. *Nature* **2013**, *498*, 492–496. [[CrossRef](#)] [[PubMed](#)]

74. Marchi, S.; Corricelli, M.; Trapani, E.; Bravi, L.; Pittaro, A.; Delle Monache, S.; Ferroni, L.; Patergnani, S.; Missiroli, S.; Goitre, L.; et al. Defective autophagy is a key feature of cerebral cavernous malformations. *EMBO Mol. Med.* **2015**, *7*, 1403–1417. [[CrossRef](#)]
75. Zhou, H.J.; Qin, L.; Zhang, H.; Tang, W.; Ji, W.; He, Y.; Liang, X.; Wang, Z.; Yuan, Q.; Vortmeyer, A.; et al. Endothelial exocytosis of angiopoietin-2 resulting from CCM3 deficiency contributes to cerebral cavernous malformation. *Nat. Med.* **2016**, *22*, 1033–1042. [[CrossRef](#)]
76. Crose, L.E.; Hilder, T.L.; Sciaky, N.; Johnson, G.L. Cerebral cavernous malformation 2 protein promotes smad ubiquitin regulatory factor 1-mediated RhoA degradation in endothelial cells. *J. Biol. Chem.* **2009**, *284*, 13301–13305. [[CrossRef](#)]
77. Glading, A.; Han, J.; Stockton, R.A.; Ginsberg, M.H. KRIT-1/CCM1 is a Rap1 effector that regulates endothelial cell cell junctions. *J. Cell Biol.* **2007**, *179*, 247–254. [[CrossRef](#)]
78. Wang, H.R.; Zhang, Y.; Ozdamar, B.; Ogunjimi, A.A.; Alexandrova, E.; Thomsen, G.H.; Wrana, J.L. Regulation of cell polarity and protrusion formation by targeting RhoA for degradation. *Science* **2003**, *302*, 1775–1779. [[CrossRef](#)]
79. Zhou, Z.; Rawnsley, D.R.; Goddard, L.M.; Pan, W.; Cao, X.J.; Jakus, Z.; Zheng, H.; Yang, J.; Arthur, J.S.; Whitehead, K.J.; et al. The cerebral cavernous malformation pathway controls cardiac development via regulation of endocardial MEKK3 signaling and KLF expression. *Dev. Cell* **2015**, *32*, 168–180. [[CrossRef](#)]
80. Zhou, Z.; Tang, A.T.; Wong, W.Y.; Bamezai, S.; Goddard, L.M.; Shenkar, R.; Zhou, S.; Yang, J.; Wright, A.C.; Foley, M.; et al. Cerebral cavernous malformations arise from endothelial gain of MEKK3-KLF2/4 signalling. *Nature* **2016**, *532*, 122–126. [[CrossRef](#)]
81. Huang, Q.; Yang, J.; Lin, Y.; Walker, C.; Cheng, J.; Liu, Z.G.; Su, B. Differential regulation of interleukin 1 receptor and Toll-like receptor signaling by MEKK3. *Nat. Immunol.* **2004**, *5*, 98–103. [[CrossRef](#)] [[PubMed](#)]
82. Li, K.; Wang, M.; Hu, Y.; Xu, N.; Yu, Q.; Wang, Q. TAK1 knockdown enhances lipopolysaccharide-induced secretion of proinflammatory cytokines in myeloid cells via unleashing MEKK3 activity. *Cell. Immunol.* **2016**, *310*, 193–198. [[CrossRef](#)] [[PubMed](#)]
83. Samanta, A.K.; Huang, H.J.; Bast, R.C., Jr.; Liao, W.S. Overexpression of MEKK3 confers resistance to apoptosis through activation of NFkappaB. *J. Biol. Chem.* **2004**, *279*, 7576–7583. [[CrossRef](#)] [[PubMed](#)]
84. Yang, J.; Lin, Y.; Guo, Z.; Cheng, J.; Huang, J.; Deng, L.; Liao, W.; Chen, Z.; Liu, Z.; Su, B. The essential role of MEKK3 in TNF-induced NF-kappaB activation. *Nat. Immunol.* **2001**, *2*, 620–624. [[CrossRef](#)] [[PubMed](#)]
85. Tang, A.T.; Choi, J.P.; Kotzin, J.J.; Yang, Y.; Hong, C.C.; Hobson, N.; Girard, R.; Zeineddine, H.A.; Lightle, R.; Moore, T.; et al. Endothelial TLR4 and the microbiome drive cerebral cavernous malformations. *Nature* **2017**, *545*, 305–310. [[CrossRef](#)]
86. Fisher, O.S.; Deng, H.; Liu, D.; Zhang, Y.; Wei, R.; Deng, Y.; Zhang, F.; Louvi, A.; Turk, B.E.; Boggon, T.J.; et al. Structure and vascular function of MEKK3-cerebral cavernous malformations 2 complex. *Nat. Commun.* **2015**, *6*, 7937. [[CrossRef](#)]
87. Harel, L.; Costa, B.; Tcherpakov, M.; Zapatka, M.; Oberthuer, A.; Hansford, L.M.; Vojvodic, M.; Levy, Z.; Chen, Z.Y.; Lee, F.S.; et al. CCM2 mediates death signaling by the TrkA receptor tyrosine kinase. *Neuron* **2009**, *63*, 585–591. [[CrossRef](#)]
88. Costa, B.; Kean, M.J.; Ast, V.; Knight, J.D.; Mett, A.; Levy, Z.; Ceccarelli, D.F.; Badillo, B.G.; Eils, R.; Konig, R.; et al. STK25 protein mediates TrkA and CCM2 protein-dependent death in pediatric tumor cells of neural origin. *J. Biol. Chem.* **2012**, *287*, 29285–29289. [[CrossRef](#)]
89. Wu, Z.; Qi, Y.; Guo, Z.; Li, P.; Zhou, D. miR-613 suppresses ischemia-reperfusion-induced cardiomyocyte apoptosis by targeting the programmed cell death 10 gene. *Biosci. Trends* **2016**, *10*, 251–257. [[CrossRef](#)]
90. Chen, L.; Tanriover, G.; Yano, H.; Friedlander, R.; Louvi, A.; Gunel, M. Apoptotic functions of PDCD10/CCM3, the gene mutated in cerebral cavernous malformation 3. *Stroke* **2009**, *40*, 1474–1481. [[CrossRef](#)]
91. Zhang, H.; Ma, X.; Deng, X.; Chen, Y.; Mo, X.; Zhang, Y.; Zhao, H.; Ma, D. PDCD10 interacts with STK25 to accelerate cell apoptosis under oxidative stress. *Front. Biosci.* **2012**, *17*, 2295–2305. [[CrossRef](#)] [[PubMed](#)]
92. Fidalgo, M.; Guerrero, A.; Fraile, M.; Iglesias, C.; Pombo, C.M.; Zalvide, J. Adaptor protein cerebral cavernous malformation 3 (CCM3) mediates phosphorylation of the cytoskeletal proteins ezrin/radixin/moesin by mammalian Ste20-4 to protect cells from oxidative stress. *J. Biol. Chem.* **2012**, *287*, 11556–11565. [[CrossRef](#)] [[PubMed](#)]
93. Wong, J.H.; Awad, I.A.; Kim, J.H. Ultrastructural pathological features of cerebrovascular malformations: A preliminary report. *Neurosurgery* **2000**, *46*, 1454–1459. [[CrossRef](#)] [[PubMed](#)]

94. Tu, J.; Stoodley, M.A.; Morgan, M.K.; Storer, K.P. Ultrastructural characteristics of hemorrhagic, nonhemorrhagic, and recurrent cavernous malformations. *J. Neurosurg.* **2005**, *103*, 903–909. [[CrossRef](#)]
95. Girard, R.; Fam, M.D.; Zeineddine, H.A.; Tan, H.; Mikati, A.G.; Shi, C.; Jesselson, M.; Shenkar, R.; Wu, M.; Cao, Y.; et al. Vascular permeability and iron deposition biomarkers in longitudinal follow-up of cerebral cavernous malformations. *J. Neurosurg.* **2017**, *127*, 102–110. [[CrossRef](#)]
96. Mikati, A.G.; Khanna, O.; Zhang, L.; Girard, R.; Shenkar, R.; Guo, X.; Shah, A.; Larsson, H.B.; Tan, H.; Li, L.; et al. Vascular permeability in cerebral cavernous malformations. *J. Cereb. Blood Flow Metab.* **2015**, *35*, 1632–1639. [[CrossRef](#)]
97. Murali, A.; Rajalingam, K. Small Rho GTPases in the control of cell shape and mobility. *Cell. Mol. Life Sci.* **2014**, *71*, 1703–1721. [[CrossRef](#)]
98. Citalan-Madrid, A.F.; Garcia-Ponce, A.; Vargas-Robles, H.; Betanzos, A.; Schnoor, M. Small GTPases of the Ras superfamily regulate intestinal epithelial homeostasis and barrier function via common and unique mechanisms. *Tissue Barriers* **2013**, *1*, e26938. [[CrossRef](#)]
99. van Buul, J.D.; Geerts, D.; Huvneers, S. Rho GTPases and GEFs: Controlling switches in endothelial cell adhesion. *Cell Adhes. Migr.* **2014**, *8*, 108–124. [[CrossRef](#)]
100. Shen, Q.; Wu, M.H.; Yuan, S.Y. Endothelial contractile cytoskeleton and microvascular permeability. *Cell Health Cytoskelet.* **2009**, *2009*, 43–50. [[CrossRef](#)]
101. Corr, M.; Lerman, I.; Keubel, J.M.; Ronacher, L.; Misra, R.; Lund, F.; Sarelius, I.H.; Glading, A.J. Decreased Krev interaction-trapped 1 expression leads to increased vascular permeability and modifies inflammatory responses *in vivo*. *Arter. Thromb. Vasc. Biol.* **2012**, *32*, 2702–2710. [[CrossRef](#)] [[PubMed](#)]
102. Goitre, L.; DiStefano, P.V.; Moglia, A.; Nobiletti, N.; Baldini, E.; Trabalzini, L.; Keubel, J.; Trapani, E.; Shuvaev, V.V.; Muzykantov, V.R.; et al. Up-regulation of NADPH oxidase-mediated redox signaling contributes to the loss of barrier function in KRIT1 deficient endothelium. *Sci. Rep.* **2017**, *7*, 8296. [[CrossRef](#)] [[PubMed](#)]
103. Meliton, A.; Meng, F.; Tian, Y.; Shah, A.A.; Birukova, A.A.; Birukov, K.G. Role of Krev Interaction Trapped-1 in Prostacyclin-Induced Protection against Lung Vascular Permeability Induced by Excessive Mechanical Forces and Thrombin Receptor Activating Peptide 6. *Am. J. Respir. Cell Mol. Biol.* **2015**, *53*, 834–843. [[CrossRef](#)] [[PubMed](#)]
104. McDonald, D.A.; Shi, C.; Shenkar, R.; Stockton, R.A.; Liu, F.; Ginsberg, M.H.; Marchuk, D.A.; Awad, I.A. Fasudil decreases lesion burden in a murine model of cerebral cavernous malformation disease. *Stroke* **2012**, *43*, 571–574. [[CrossRef](#)] [[PubMed](#)]
105. Shenkar, R.; Shi, C.; Austin, C.; Moore, T.; Lightle, R.; Cao, Y.; Zhang, L.; Wu, M.; Zeineddine, H.A.; Girard, R.; et al. RhoA Kinase Inhibition with Fasudil Versus Simvastatin in Murine Models of Cerebral Cavernous Malformations. *Stroke* **2017**, *48*, 187–194. [[CrossRef](#)] [[PubMed](#)]
106. Shenkar, R.; Peiper, A.; Pardo, H.; Moore, T.; Lightle, R.; Girard, R.; Hobson, N.; Polster, S.P.; Koskimaki, J.; Zhang, D.; et al. Rho Kinase Inhibition Blunts Lesion Development and Hemorrhage in Murine Models of Aggressive *Pdcd10/Ccm3* Disease. *Stroke* **2019**, *50*, 738–744. [[CrossRef](#)] [[PubMed](#)]
107. Polster, S.P.; Stadnik, A.; Akers, A.L.; Cao, Y.; Christoforidis, G.A.; Fam, M.D.; Flemming, K.D.; Girard, R.; Hobson, N.; Koenig, J.I.; et al. Atorvastatin Treatment of Cavernous Angiomas with Symptomatic Hemorrhage Exploratory Proof of Concept (AT CASH EPOC) Trial. *Neurosurgery* **2019**, *85*, 843–853. [[CrossRef](#)]
108. Lange, C.; Storkebaum, E.; de Almodovar, C.R.; Dewerchin, M.; Carmeliet, P. Vascular endothelial growth factor: A neurovascular target in neurological diseases. *Nat. Rev. Neurol.* **2016**, *12*, 439–454. [[CrossRef](#)]
109. DiStefano, P.V.; Kuebel, J.M.; Sarelius, I.H.; Glading, A.J. KRIT1 protein depletion modifies endothelial cell behavior via increased vascular endothelial growth factor (VEGF) signaling. *J. Biol. Chem.* **2014**, *289*, 33054–33065. [[CrossRef](#)]
110. Goitre, L.; Balzac, F.; Degani, S.; Degan, P.; Marchi, S.; Pinton, P.; Retta, S.F. KRIT1 regulates the homeostasis of intracellular reactive oxygen species. *PLoS ONE* **2010**, *5*, e11786. [[CrossRef](#)]
111. Wallez, Y.; Huber, P. Endothelial adherens and tight junctions in vascular homeostasis, inflammation and angiogenesis. *Biochim. Biophys. Acta* **2008**, *1778*, 794–809. [[CrossRef](#)] [[PubMed](#)]
112. Daneman, R.; Prat, A. The blood-brain barrier. *Cold Spring Harb. Perspect. Biol.* **2015**, *7*, a020412. [[CrossRef](#)] [[PubMed](#)]
113. Gunzel, D.; Yu, A.S. Claudins and the modulation of tight junction permeability. *Physiol. Rev.* **2013**, *93*, 525–569. [[CrossRef](#)] [[PubMed](#)]



114. Castro Dias, M.; Coisne, C.; Lazarevic, I.; Baden, P.; Hata, M.; Iwamoto, N.; Francisco, D.M.F.; Vanlandewijck, M.; He, L.; Baier, F.A.; et al. Claudin-3-deficient C57BL/6J mice display intact brain barriers. *Sci. Rep.* **2019**, *9*, 203. [[CrossRef](#)] [[PubMed](#)]
115. Ohtsuki, S.; Yamaguchi, H.; Katsukura, Y.; Asashima, T.; Terasaki, T. mRNA expression levels of tight junction protein genes in mouse brain capillary endothelial cells highly purified by magnetic cell sorting. *J. Neurochem.* **2008**, *104*, 147–154. [[CrossRef](#)]
116. Nitta, T.; Hata, M.; Gotoh, S.; Seo, Y.; Sasaki, H.; Hashimoto, N.; Furuse, M.; Tsukita, S. Size-selective loosening of the blood-brain barrier in claudin-5-deficient mice. *J. Cell Biol.* **2003**, *161*, 653–660. [[CrossRef](#)]
117. Raleigh, D.R.; Marchiando, A.M.; Zhang, Y.; Shen, L.; Sasaki, H.; Wang, Y.; Long, M.; Turner, J.R. Tight junction-associated MARVEL proteins marveld3, tricellulin, and occludin have distinct but overlapping functions. *Mol. Biol. Cell* **2010**, *21*, 1200–1213. [[CrossRef](#)]
118. Buschmann, M.M.; Shen, L.; Rajapakse, H.; Raleigh, D.R.; Wang, Y.; Lingaraju, A.; Zha, J.; Abbott, E.; McAuley, E.M.; Breskin, L.A.; et al. Occludin OCEL-domain interactions are required for maintenance and regulation of the tight junction barrier to macromolecular flux. *Mol. Biol. Cell* **2013**, *24*, 3056–3068. [[CrossRef](#)]
119. Krug, S.M.; Amasheh, S.; Richter, J.F.; Milatz, S.; Gunzel, D.; Westphal, J.K.; Huber, O.; Schulzke, J.D.; Fromm, M. Tricellulin Forms a Barrier to Macromolecules in Tricellular Tight Junctions without Affecting Ion Permeability. *Mol. Biol. Cell* **2009**, *20*, 3713–3724. [[CrossRef](#)]
120. Saitou, M.; Furuse, M.; Sasaki, H.; Schulzke, J.D.; Fromm, M.; Takano, H.; Noda, T.; Tsukita, S. Complex phenotype of mice lacking occludin, a component of tight junction strands. *Mol. Biol. Cell* **2000**, *11*, 4131–4142. [[CrossRef](#)]
121. O'Driscoll, M.C.; Daly, S.B.; Urquhart, J.E.; Black, G.C.; Pilz, D.T.; Brockmann, K.; McEntagart, M.; Abdel-Salam, G.; Zaki, M.; Wolf, N.I.; et al. Recessive mutations in the gene encoding the tight junction protein occludin cause band-like calcification with simplified gyration and polymicrogyria. *Am. J. Hum. Genet.* **2010**, *87*, 354–364. [[CrossRef](#)]
122. Laukoetter, M.G.; Nava, P.; Lee, W.Y.; Severson, E.A.; Capaldo, C.T.; Babbitt, B.A.; Williams, I.R.; Koval, M.; Peatman, E.; Campbell, J.A.; et al. JAM-A regulates permeability and inflammation in the intestine *in vivo*. *J. Exp. Med.* **2007**, *204*, 3067–3076. [[CrossRef](#)] [[PubMed](#)]
123. Otani, T.; Nguyen, T.P.; Tokuda, S.; Sugihara, K.; Sugawara, T.; Furuse, K.; Miura, T.; Ebnet, K.; Furuse, M. Claudins and JAM-A coordinately regulate tight junction formation and epithelial polarity. *J. Cell Biol.* **2019**, *218*, 3372–3396. [[CrossRef](#)] [[PubMed](#)]
124. Schmitt, M.M.N.; Megens, R.T.A.; Zernecke, A.; Bidzhekov, K.; van den Akker, N.M.; Rademakers, T.; van Zandvoort, M.A.; Hackeng, T.M.; Koenen, R.R.; Weber, C. Endothelial Junctional Adhesion Molecule-A Guides Monocytes into Flow-Dependent Predilection Sites of Atherosclerosis. *Circulation* **2014**, *129*, 66–76. [[CrossRef](#)] [[PubMed](#)]
125. Cohen, C.J.; Shieh, J.T.; Pickles, R.J.; Okegawa, T.; Hsieh, J.T.; Bergelson, J.M. The coxsackievirus and adenovirus receptor is a transmembrane component of the tight junction. *Proc. Natl. Acad. Sci. USA* **2001**, *98*, 15191–15196. [[CrossRef](#)] [[PubMed](#)]
126. Chung, J.; Kim, K.H.; An, S.H.; Lee, S.; Lim, B.K.; Kang, S.W.; Kwon, K. Coxsackievirus and adenovirus receptor mediates the responses of endothelial cells to fluid shear stress. *Exp. Mol. Med.* **2019**, *51*, 1–15. [[CrossRef](#)]
127. Fanning, A.S.; Anderson, J.M. Zonula Occludens-1 and-2 Are Cytosolic Scaffolds That Regulate the Assembly of Cellular Junctions. *Ann. N. Y. Acad. Sci.* **2009**, *1165*, 113–120. [[CrossRef](#)]
128. Katsuno, T.; Umeda, K.; Matsui, T.; Hata, M.; Tamura, A.; Itoh, M.; Takeuchi, K.; Fujimori, T.; Nabeshima, Y.; Noda, T.; et al. Deficiency of zonula occludens-1 causes embryonic lethal phenotype associated with defected yolk sac angiogenesis and apoptosis of embryonic cells. *Mol. Biol. Cell* **2008**, *19*, 2465–2475. [[CrossRef](#)]
129. Tornavaca, O.; Chia, M.; Dufton, N.; Almagro, L.O.; Conway, D.E.; Randi, A.M.; Schwartz, M.A.; Matter, K.; Balda, M.S. ZO-1 controls endothelial adherens junctions, cell-cell tension, angiogenesis, and barrier formation. *J. Cell Biol.* **2015**, *208*, 821–838. [[CrossRef](#)] [[PubMed](#)]
130. Schossleitner, K.; Rauscher, S.; Groger, M.; Friedl, H.P.; Finsterwalder, R.; Habertheuer, A.; Sibilia, M.; Brostjan, C.; Fodinger, D.; Citi, S.; et al. Evidence That Cingulin Regulates Endothelial Barrier Function In Vitro and In Vivo. *Arter. Throm. Vas.* **2016**, *36*, 647–654. [[CrossRef](#)] [[PubMed](#)]

131. Chrifi, I.; Hermkens, D.; Brandt, M.M.; van Dijk, C.G.M.; Burgisser, P.E.; Haasdijk, R.; Pei, J.Y.; van de Kamp, E.H.M.; Zhu, C.B.; Blonden, L.; et al. Cgn1, an endothelial junction complex protein, regulates GTPase mediated angiogenesis. *Cardiovasc. Res.* **2017**, *113*, 1776–1788. [[CrossRef](#)] [[PubMed](#)]
132. McKenzie, J.A.; Ridley, A.J. Roles of Rho/ROCK and MLCK in TNF-alpha-induced changes in endothelial morphology and permeability. *J. Cell. Physiol.* **2007**, *213*, 221–228. [[CrossRef](#)]
133. Persidsky, Y.; Heilman, D.; Haorah, J.; Zelyvanskaya, M.; Persidsky, R.; Weber, G.A.; Shimokawa, H.; Kaibuchi, K.; Ikezu, T. Rho-mediated regulation of tight junctions during monocyte migration across the blood-brain barrier in HIV-1 encephalitis (HIVE). *Blood* **2006**, *107*, 4770–4780. [[CrossRef](#)] [[PubMed](#)]
134. Wojciak-Stothard, B.; Potempa, S.; Eichholtz, T.; Ridley, A.J. Rho and Rac but not Cdc42 regulate endothelial cell permeability. *J. Cell Sci.* **2001**, *114*, 1343–1355. [[PubMed](#)]
135. Terry, S.; Nie, M.; Matter, K.; Balda, M.S. Rho signaling and tight junction functions. *Physiology* **2010**, *25*, 16–26. [[CrossRef](#)]
136. Yamamoto, M.; Ramirez, S.H.; Sato, S.; Kiyota, T.; Cerny, R.L.; Kaibuchi, K.; Persidsky, Y.; Ikezu, T. Phosphorylation of claudin-5 and occludin by rho kinase in brain endothelial cells. *Am. J. Pathol.* **2008**, *172*, 521–533. [[CrossRef](#)]
137. Izawa, Y.; Gu, Y.H.; Osada, T.; Kanazawa, M.; Hawkins, B.T.; Koziol, J.A.; Papayannopoulou, T.; Spatz, M.; Del Zoppo, G.J. beta1-integrin-matrix interactions modulate cerebral microvessel endothelial cell tight junction expression and permeability. *J. Cereb. Blood Flow Metab.* **2018**, *38*, 641–658. [[CrossRef](#)]
138. Faurobert, E.; Rome, C.; Lisowska, J.; Manet-Dupe, S.; Boulday, G.; Malbouyres, M.; Bolland, M.; Bouin, A.P.; Keramidas, M.; Bouvard, D.; et al. CCM1-ICAP-1 complex controls beta 1 integrin-dependent endothelial contractility and fibronectin remodeling. *J. Cell Biol.* **2013**, *202*, 545–561. [[CrossRef](#)]
139. Millon-Fremillon, A.; Brunner, M.; Abed, N.; Collomb, E.; Ribba, A.S.; Block, M.R.; Albiges-Rizo, C.; Bouvard, D. Calcium and calmodulin-dependent serine/threonine protein kinase type II (CaMKII)-mediated intramolecular opening of integrin cytoplasmic domain-associated protein-1 (ICAP-1alpha) negatively regulates beta1 integrins. *J. Biol. Chem.* **2013**, *288*, 20248–20260. [[CrossRef](#)]
140. Stroeken, P.J.M.; Alvarez, B.; Van Rheenen, J.; Wijnands, Y.M.; Geerts, D.; Jalink, K.; Roos, E. Integrin cytoplasmic domain-associated protein-1 (ICAP-1) interacts with the ROCK-1 kinase at the plasma membrane. *J. Cell. Physiol.* **2006**, *208*, 620–628. [[CrossRef](#)]
141. Wittchen, E.S.; Worthylake, R.A.; Kelly, P.; Casey, P.J.; Quilliam, L.A.; Burrige, K. Rap1 GTPase inhibits leukocyte transmigration by promoting endothelial barrier function. *J. Biol. Chem.* **2005**, *280*, 11675–11682. [[CrossRef](#)] [[PubMed](#)]
142. Ramos, C.J.; Lin, C.; Liu, X.; Antonetti, D.A. The EPAC-Rap1 pathway prevents and reverses cytokine-induced retinal vascular permeability. *J. Biol. Chem.* **2018**, *293*, 717–730. [[CrossRef](#)] [[PubMed](#)]
143. Wilson, C.W.; Parker, L.H.; Hall, C.J.; Smyczek, T.; Mak, J.; Crow, A.; Posthuma, G.; De Maziere, A.; Sagolla, M.; Chalouni, C.; et al. Rasip1 regulates vertebrate vascular endothelial junction stability through Epac1-Rap1 signaling. *Blood* **2013**, *122*, 3678–3690. [[CrossRef](#)] [[PubMed](#)]
144. Post, A.; Pannekoek, W.J.; Ross, S.H.; Verlaan, I.; Brouwer, P.M.; Bos, J.L. Rasip1 mediates Rap1 regulation of Rho in endothelial barrier function through ArhGAP29. *Proc. Natl. Acad. Sci. USA* **2013**, *110*, 11427–11432. [[CrossRef](#)] [[PubMed](#)]
145. Xu, K.; Sacharidou, A.; Fu, S.; Chong, D.C.; Skaug, B.; Chen, Z.J.; Davis, G.E.; Cleaver, O. Blood vessel tubulogenesis requires Rasip1 regulation of GTPase signaling. *Dev. Cell* **2011**, *20*, 526–539. [[CrossRef](#)]
146. de Kreuk, B.J.; Gingras, A.R.; Knight, J.D.R.; Liu, J.J.; Gingras, A.C.; Ginsberg, M.H. Heart of glass anchors Rasip1 at endothelial cell-cell junctions to support vascular integrity. *eLife* **2016**, *5*, e11394. [[CrossRef](#)]
147. Severson, E.A.; Parkos, C.A. Structural determinants of Junctional Adhesion Molecule A (JAM-A) function and mechanisms of intracellular signaling. *Curr. Opin. Cell Biol.* **2009**, *21*, 701–707. [[CrossRef](#)]
148. Giannotta, M.; Benedetti, S.; Tedesco, F.S.; Corada, M.; Trani, M.; D'Antuono, R.; Millet, Q.; Orsenigo, F.; Galvez, B.G.; Cossu, G.; et al. Targeting endothelial junctional adhesion molecule-A/EPAC/Rap-1 axis as a novel strategy to increase stem cell engraftment in dystrophic muscles. *EMBO Mol. Med.* **2014**, *6*, 239–258. [[CrossRef](#)]
149. Schneider, H.; Errede, M.; Ulrich, N.H.; Virgintino, D.; Frei, K.; Bertalanffy, H. Impairment of tight junctions and glucose transport in endothelial cells of human cerebral cavernous malformations. *J. Neuropathol. Exp. Neurol.* **2011**, *70*, 417–429. [[CrossRef](#)]

150. Jakimovski, D.; Schneider, H.; Frei, K.; Kennes, L.N.; Bertalanffy, H. Bleeding propensity of cavernous malformations: Impact of tight junction alterations on the occurrence of overt hematoma. *J. Neurosurg.* **2014**, *121*, 613–620. [[CrossRef](#)]
151. Lopez-Ramirez, M.A.; Fonseca, G.; Zeineddine, H.A.; Girard, R.; Moore, T.; Pham, A.; Cao, Y.; Shenkar, R.; de Kreuk, B.J.; Lagarrigue, F.; et al. Thrombospondin1 (TSP1) replacement prevents cerebral cavernous malformations. *J. Exp. Med.* **2017**, *214*, 3331–3346. [[CrossRef](#)] [[PubMed](#)]
152. Stamatovic, S.M.; Sladojevic, N.; Keep, R.F.; Andjelkovic, A.V. PDCD10 (CCM3) regulates brain endothelial barrier integrity in cerebral cavernous malformation type 3: Role of CCM3-ERK1/2-cortactin cross-talk. *Acta Neuropathol.* **2015**, *130*, 731–750. [[CrossRef](#)] [[PubMed](#)]
153. Johnson, A.M.; Roach, J.P.; Hu, A.; Stamatovic, S.M.; Zochowski, M.R.; Keep, R.F.; Andjelkovic, A.V. Connexin 43 gap junctions contribute to brain endothelial barrier hyperpermeability in familial cerebral cavernous malformations type III by modulating tight junction structure. *FASEB J.* **2018**, *32*, 2615–2629. [[CrossRef](#)] [[PubMed](#)]
154. Glading, A.J.; Ginsberg, M.H. Rap1 and its effector KRIT1/CCM1 regulate beta-catenin signaling. *Dis. Models Mech.* **2010**, *3*, 73–83. [[CrossRef](#)]
155. Wang, Y.; Li, Y.; Zou, J.; Polster, S.P.; Lightle, R.; Moore, T.; Dimaano, M.; He, T.C.; Weber, C.R.; Awad, I.A.; et al. The cerebral cavernous malformation disease causing gene KRIT1 participates in intestinal epithelial barrier maintenance and regulation. *FASEB J.* **2019**, *33*, 2132–2143. [[CrossRef](#)]
156. McCarthy, K.M.; Francis, S.A.; McCormack, J.M.; Lai, J.; Rogers, R.A.; Skare, I.B.; Lynch, R.D.; Schneeberger, E.E. Inducible expression of claudin-1-myc but not occludin-VSV-G results in aberrant tight junction strand formation in MDCK cells. *J. Cell Sci.* **2000**, *113*, 3387–3398.
157. Tang, A.T.; Sullivan, K.R.; Hong, C.C.; Goddard, L.M.; Mahadevan, A.; Ren, A.; Pardo, H.; Peiper, A.; Griffin, E.; Tanes, C.; et al. Distinct cellular roles for PDCD10 define a gut-brain axis in cerebral cavernous malformation. *Sci. Transl. Med.* **2019**, *11*. [[CrossRef](#)]



© 2020 by the authors. Licensee MDPI, Basel, Switzerland. This article is an open access article distributed under the terms and conditions of the Creative Commons Attribution (CC BY) license (<http://creativecommons.org/licenses/by/4.0/>).