



Communication

Identification of (Z)-8-Heptadecene and *n*-Pentadecane as Electrophysiologically Active Compounds in *Ophrys insectifera* and Its *Argogorytes* Pollinator

Björn Bohman ^{1,2,*}, Alyssa M. Weinstein ³, Raimondas Mozuraitis ⁴ , Gavin R. Flematti ¹ and Anna-Karin Borg-Karlson ⁵

¹ School of Molecular Sciences, the University of Western Australia, Crawley, WA 6009, Australia

² Department of Plant Protection Biology, Swedish University of Agricultural Sciences, 23053 Alnarp, Sweden

³ Research School of Biology, the Australian National University, Acton, ACT 2601, Australia

⁴ Department of Zoology, Stockholm University, 106 91, Stockholm, Sweden

⁵ Department of Chemical Engineering, Mid Sweden University, 85170 Sundsvall, Sweden

* Correspondence: bjorn.bohman@uwa.edu.au

Received: 25 December 2019; Accepted: 14 January 2020; Published: 17 January 2020



Abstract: Sexually deceptive orchids typically depend on specific insect species for pollination, which are lured by sex pheromone mimicry. European *Ophrys* orchids often exploit specific species of wasps or bees with carboxylic acid derivatives. Here, we identify the specific semiochemicals present in *O. insectifera*, and in females of one of its pollinator species, *Argogorytes fargeii*. Headspace volatile samples and solvent extracts were analysed by GC-MS and semiochemicals were structurally elucidated by microderivatisation experiments and synthesis. (Z)-8-Heptadecene and *n*-pentadecane were confirmed as present in both *O. insectifera* and *A. fargeii* female extracts, with both compounds being found to be electrophysiologically active to pollinators. The identified semiochemicals were compared with previously identified *Ophrys* pollinator attractants, such as (Z)-9 and (Z)-12-C₂₇-C₂₉ alkenes in *O. sphegodes* and (Z)-9-octadecenal, octadecanal, ethyl linoleate and ethyl oleate in *O. speculum*, to provide further insights into the biosynthesis of semiochemicals in this genus. We propose that all these currently identified *Ophrys* semiochemicals can be formed biosynthetically from the same activated carboxylic acid precursors, after a sequence of elongation and decarbonylation reactions in *O. sphegodes* and *O. speculum*, while in *O. insectifera*, possibly by decarbonylation without preceding elongation.

Keywords: *Ophrys*; sexual deception; semiochemicals; fly orchid; pollination

1. Introduction

Pseudocopulation as a means of pollination was first reported over 100 years ago, in two parallel systems [1,2]. Correvon and Pouyanne made observations of European *Ophrys* orchids [1], while in Australia, *Cryptostylis* orchids were reported to use the same sexually deceptive strategy, in which insect pollinators attempt copulatory or courtship behaviour with the flower, thereby transferring pollinia [2,3]. Insect sexual attraction is induced through chemical and physical mimicry of female insects. Pollination by sexual deception is now known to be a phenomenon that has evolved independently multiple times on different continents. There are several hundred confirmed cases in the Orchidaceae, with many more likely to be discovered with future studies [4–6]. There are also single reports of sexual deception in the Asteraceae [7] and Iridaceae [8], indicating that this pollination strategy may be more common than is currently known.

Following the initial observations of pollination via sexual deception in *Ophrys* and *Cryptostylis* orchids, an intensive Swedish research program was launched in 1948 to investigate the chemical cues underlying this bizarre pollination strategy. *Ophrys insectifera* and some southern European *Ophrys* and their solitary bee pollinator species were the main study species [9]. In these early studies, field experiments demonstrated that floral volatiles were the key to pollinator attraction [9,10]. With the use of electroantennography (EAG), it was later shown that two species of male sphecid wasp pollinator, *Argogorytes mystaceus* and *A. fargeii*, unlike their conspecific females, responded to tentatively identified alkanes, alkenes, and terpenes in sorption headspace extracts of *O. insectifera* flowers [11]. A few years later, the first evidence of chemical mimicry of several species of *Andrena* bee pollinators by *O. fusca* and *O. lutea*, was found: aliphatic alcohols, monoterpene- and sesquiterpene alcohols, and aldehydes attracted the patrolling males to varying degrees [12,13].

The first identification of pollinator sexual attractants in the genus *Ophrys* did not occur until the late 1990s, with the successful structural elucidation of attractants from *O. sphegodes* [14,15]. A key to the detection and identification of the semiochemicals from this species was the use of gas chromatography coupled with electroantennogram detection (GC-EAD), which revealed a set of 14 electrophysiologically active compounds to be shared among the orchid and the female of its bee pollinator, *Andrena nigroaenea*. Before being confirmed as attractants in field bioassays, these compounds were identified by GC-MS, including microderivatization experiments, as a series of long-chained alkanes and alkenes. Furthermore, three (*Z*)-7 alkenes were discovered to be responsible for the attraction of male *Colletes cunicularius* bees to *O. exaltata* [16]. The chemical stimuli for the sexual attraction of various *Ophrys* pollinators also include other types of structures, as shown when a mixture of hydroxy- and keto acids, together with aldehydes and esters, were identified as the attractants in *O. speculum*, which is pollinated by male *Campsoscolia ciliata* scoliid wasps [17].

In Australian sexually deceptive orchids, 1,3-cyclohexanediones (chiloglottes) have been identified as pollinator attractants in *Chiloglottis* [18], as have hydroxymethylpyrazines and a β -hydroxylactone (drakolide) in *Drakaea* [19–22], (methylthio)phenols, acetophenones and monoterpenes in *Caladenia* [23–25], and tetrahydrofuran acid derivatives in *Cryptostylis* [26].

Besides the discovery of a broad range of compounds pivotal for pollination in sexually deceptive orchids, there has also been interest in the biosynthesis of these compounds, with the aim to link biosynthesis to the evolution and speciation of orchids. Schlüter and Schiestl [27] predicted that, in *Ophrys*, the biosynthesis of alkenes would follow the biosynthetic pathway for alkanes [28], but with the addition of an extra desaturation step, potentially achieved by stearyl-acyl carrier protein desaturases (SAD). Later, three putative SAD genes (SAD1-SAD3) were isolated [29]. Transgenic expression and in vitro enzyme assays revealed SAD2 to be a functional desaturase capable of introducing 18:1 Δ^9 and 16:1 Δ^4 fatty acid intermediates, from which it was hypothesized that (*Z*)-9 alkenes and (*Z*)-12 alkenes are built. Three additional putative SAD genes (SAD4-SAD6) were also identified from an *O. sphegodes* transcriptome [30].

In *O. sphegodes* and *O. exaltata*, SAD1 and SAD2 expression levels were shown to be significantly correlated with (*Z*)-9 and (*Z*)-12-alkene production, while high SAD5 expression was correlated with the (*Z*)-7-alkene production unique to *O. exaltata* [31]. In vitro enzyme activity studies further showed that a putative housekeeping desaturase, SAD3, catalyses the general reactions of stearate to oleate (18:0-ACP to 18:1 Δ^9 -ACP), and palmitate to palmitoleate (16:0-ACP to 16:1 Δ^9 -ACP), whereas SAD5 is a specialized 16:0 Δ^9 -ACP enzyme [32]. Subsequent elongation of a 16:1 Δ^9 -ACP to a 26:1 Δ^{19} -coenzyme A precursor, followed by decarbonylation, would yield the (*Z*)-7 alkene (25:1 Δ^7) that characterizes *O. exaltata*.

In *O. speculum*, the pollinator attractants were also identified as carboxylic acid derivatives [17]. The most attractive compounds from both floral extracts and females of the scoliid wasp pollinator *Campsoscolia ciliata* were (ω -1)-hydroxy- and -oxo acids. However, it is noteworthy that the pseudo-copulation rates in field bioassay experiments more than doubled when aldehydes such

as (*Z*)-9-octadecenal and octadecanal, together with the esters ethyl linoleate and ethyl oleate, were added to the dummy female [17].

The phylogenetic relationships within *Ophrys* are currently under debate [33–37], with some phylogenetic analyses indicating that the *Argogorytes*-pollinated *O. insectifera* group represents a basal taxon, while the latest studies place the *O. fusca* complex, including *O. iricolor*, as ancestral [36,37]. All studies agree that wasp pollination is ancestral to bee pollination in *Ophrys*.

To obtain a broader understanding of the chemical details of semiochemicals in the wasp-pollinated *O. insectifera*, and sex pheromone candidates in its pollinator *A. fargeii*, we used GC-EAD, GC-MS, microderivatisation reactions, and organic synthesis to identify EAD-active compounds. These semiochemicals were compared with previously identified pollinator attractants from the bee-pollinated *O. sphegodes* and wasp-pollinated *O. speculum*, and biosynthetic relationships within *Ophrys* were proposed.

2. Results and Discussion

To identify semiochemicals in *O. insectifera*, and sex pheromone candidates in *Argogorytes fargeii* pollinators, solvent extractions of flowers and insects, and floral headspace sampling, were conducted. Samples of *O. insectifera* labella were extracted in solvents of increasing polarity, from *n*-hexane, to dichloromethane, to methanol. Headspace volatile sampling was performed using solid phase extraction (SPME). Furthermore, whole females of *A. fargeii* were extracted in dichloromethane. Due to the very limited number of pollinators available, we were restricted to evaluating biological activity using gas chromatography coupled with electroantennography (GC-EAD). Since we were unable to locate males of *A. fargeii*, GC-EAD was used to detect which components of the various extracts were detected by *A. mystaceus*, a closely related species that is the second main pollinator of *O. insectifera* [9]. Two compounds from the floral extracts were repeatedly EAD-active (elicited responses in six out of 10, and two out of 10 EAD experiments). These two compounds were tentatively identified by mass spectrometry (GC-MS) as a C17 alkene and *n*-pentadecane. In previous studies on *O. insectifera*, *n*-pentadecane (**2**, Figure 1a) was indeed found to be active in EAG experiments, while no alkenes were isolated or identified [11]. Here, we found that *n*-pentadecane and the C17 alkene were present in the female *A. fargeii* (six extracts of individual insects) and were also present in only minor amounts in floral solvent extracts (three extracts of 10 flowers). We investigated the double bond location by dimethyldisulfide (DMDS) microderivatisation of a semi-preparative GC purified compound that was extracted from the wasp. The observation of identical retention times and mass spectra between the semiochemical isolated from the wasp and the synthesized (*Z*)-8-heptadecene (**1**), before and after treatment with DMDS, meant that the double bond position and configuration of the natural product could be confirmed. Furthermore, a floral extract was treated analogously, and was confirmed to contain identical mass fragments at the same relative intensity and retention time, confirming that the compound detected by *A. mystaceus* was shared between *O. insectifera* and female *A. fargeii*. In addition to the semiochemicals identified from flowers, another two C15-alkenes and one C17-diene were identified from females of *A. fargeii*. These compounds were also isolated by semi-preparative GC and treated with DMDS. Candidate compounds were synthesized and co-injected with natural extracts (on two GC columns) and tested with GC-EAD. The monoenes were subsequently confirmed as (*Z*)-6-pentadecene (**3**) and (*Z*)-7-pentadecene (**4**), while the diene was identified as (*Z,Z*)-6,9-heptadecadiene (**5**) (Figure 1).

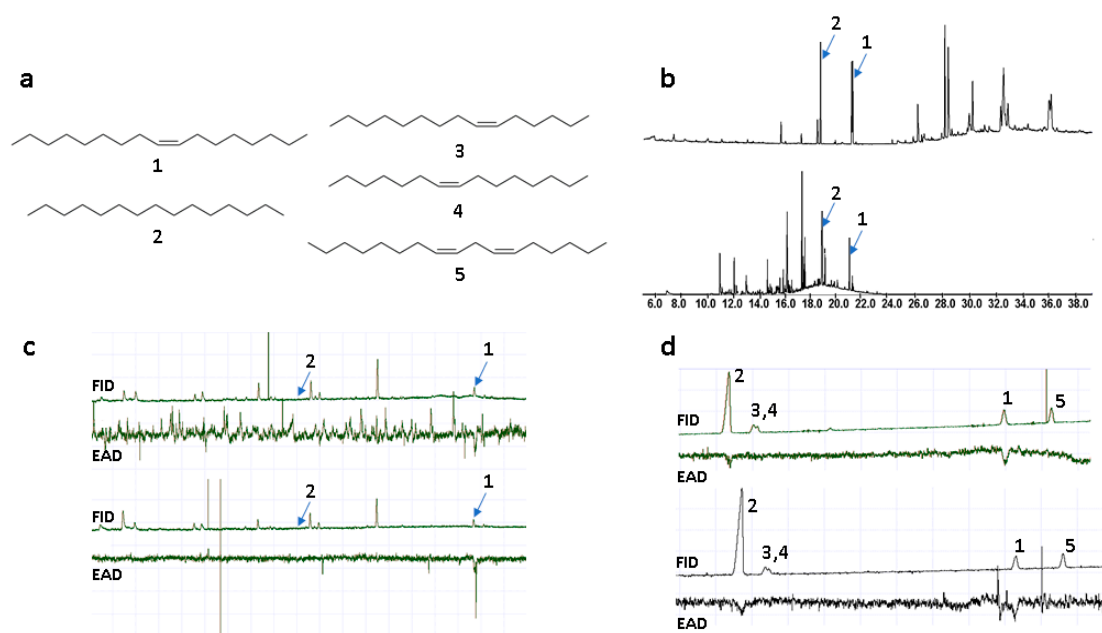



Figure 1. (a) Semiochemicals from *Ophrys insectifera* (1–2; 1 = (Z)-8-heptadecene, 2 = *n*-pentadecane) and female *Argogorytes mystaceus* (1–5; 3 = (Z)-6-pentadecene, 4 = (Z)-7-pentadecene, 5 = (Z,Z)-6,9-heptadecadiene). (b) GC-MS total ion chromatograms of female *A. fargeii* (upper trace) and *O. insectifera* (lower trace). (c) GC-EAD of SPME extracts of *O. insectifera* to antenna of *A. mystaceus* males. Two replicated analyses are shown. (d) GC-EAD of synthetic standards 1–5 to antenna of *A. mystaceus*. Two replicated analyses are shown.

The GC-EAD and GC-MS analyses of the floral extracts showed that *n*-pentadecane (2) was of low abundance and was electrophysiologically active in only two experiments, while (Z)-8-heptadecene (1) was active in six experiments. When tested as synthetics at higher concentrations (100 ng to 1 µg), both compounds were strongly EAD-active in replicated experiments. However, the additional alkenes 3–5 from *A. fargeii*, when tested as synthetic samples at the higher concentration, elicited consistently less frequent and/or weaker EAD responses compared to the orchid-produced 1 and 2 (Figure 1, Table 1).

Table 1. Occurrence of semiochemicals in *Ophrys insectifera* (SPME extracts) and *Argogorytes fargeii* females (solvent extracts), with electroantennographic responses in *A. mystaceus* males.

	Compound	Abundance in <i>O. insectifera</i>	Abundance in <i>A. fargeii</i> (Female)	EAD-Activity
 <i>Argogorytes mystaceus</i> visiting <i>Ophrys insectifera</i>	1	✓✓	✓✓	✓✓
	2	✓	✓✓	✓
	3	–	✓	(✓)
	4	–	✓	(✓)
	5	–	✓✓	(✓)

✓✓ = very abundant compound (>20% of base peak area); repeated (6 extracts, >6 synthetic samples) strong EAD-responses. ✓ = abundant compound (>10% of base peak area); repeated EAD-responses (2 extracts, >6 synthetic samples). (✓) = occasional weaker EAD-response (generally less than 50% of response of orchid semiochemicals, >3 synthetic samples). Photo A.M. Weinstein.

By analysing the GC-MS traces of floral extracts, it was observed that larger amounts of compounds 1 and 2 were present in headspace samples of flowers compared with solvent extracts. Although headspace extractions and solvent extractions are not directly comparable, our findings indicate that the flowers likely continuously produce compounds (indicated by increasing quantity with an increase in SPME sampling time), rather than depend on stored compounds (indicated by very low amounts in solvent extracts) in the floral tissue. This observation is in agreement with earlier studies of *O. insectifera* and *O. sphegodes*, favouring headspace sorption extraction over solvent extraction [14,38].

In addition to comparing observations between various *Ophrys* systems, it is of further interest to extend this comparison to other sexually deceptive orchids with known semiochemistry. Such cases are predominantly Australian, where the pollinator attractants in hammer orchids and spider orchids, unlike in *Ophrys*, have been found to be stored in relatively large amounts within the floral tissue [21,23,25].

The discovery of (*Z*)-8-heptadecene (**1**) in *O. insectifera*, detected by males of *A. mystaceus*, provides important insights about the chemistry of *Ophrys* orchids. In earlier studies of the biosynthetic pathways for the longer chained C_{25} and C_{27} alkenes from *O. exaltata* and *O. sphegodes*, C_{16} - and C_{18} activated carboxylic acids have been proposed as intermediates [32] (Figure 2). In fact, it has been proposed that in the plastid of the lip epidermis cell of the labellum of *O. exaltata* and *O. sphegodes*, 16:0-ACP and 18:0-ACP are transformed to 16:1 Δ^4 -ACP and 18:1 Δ^9 -ACP by SAD2, before being elongated in the cuticle [29]. If instead, 16:0-ACP and 18:1 Δ^9 -ACP are decarboxylated, the exact compounds found to be EAD-active in *O. insectifera*, *n*-pentadecane (**2**) and (*Z*)-8-heptadecene (**1**), would be formed (Figure 2).

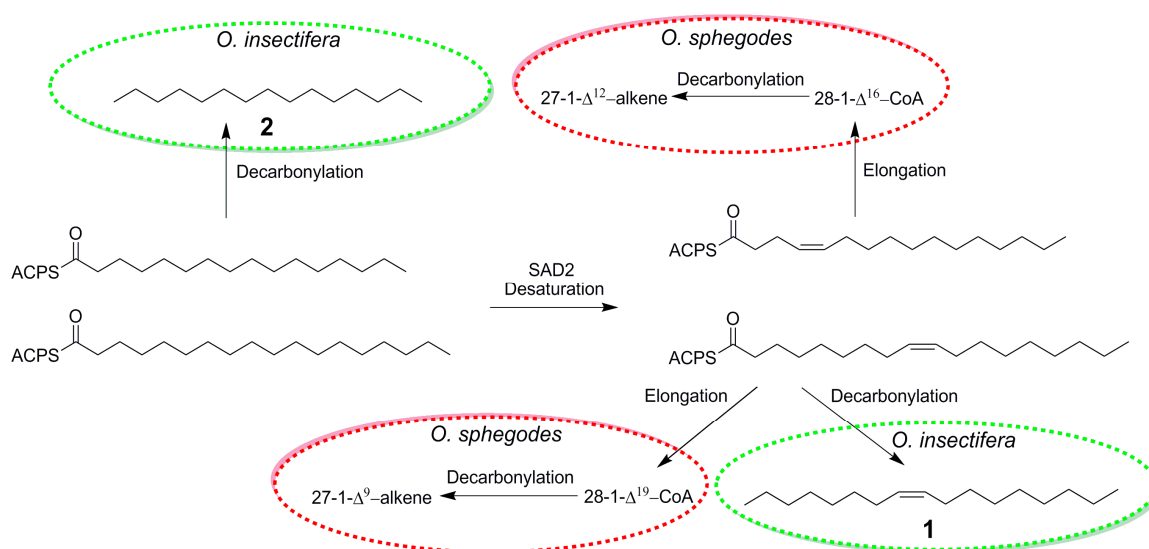


Figure 2. Proposed biosynthesis of bioactive alkenes in *Ophrys sphegodes* (from [32]) and *O. insectifera*.

In a similar manner, our results can be compared to the pollinator attractants previously identified in *O. speculum*. Out of the blend of eight electrophysiologically active compounds that showed the highest pollinator attraction in field bioassays, three compounds: hexadecanal, (*Z*)-9-octadecenal, and ethyl oleate, show strong structural similarity with the hydrocarbons that we identified in *O. insectifera*. In fact, decarboxylation of these semiochemicals, in a similar way as proposed in the case of *O. sphegodes* (Figure 2), would yield pentadecane (**2**) from hexadecanal and (*Z*)-8-heptadecene (**1**) from (*Z*)-9-octadecenal and ethyl oleate.

Compared to the recent studies of Australian *Drakaea* and *Caladenia* orchids, where multiple, structurally diverse pollinator attractants have been identified in multiple species [21–23,25], the structural similarities between the semiochemicals of *O. insectifera*, *O. sphegodes*, and *O. speculum* are evident, all being clearly biosynthetically closely related carboxylic acid derived compounds. It is also interesting to note the difference in volatility compared to the widely studied Australian systems, where “traditional” volatiles are used as long-range attractants, while the European systems utilise less volatile cuticular hydrocarbons, such as the C_{27} – C_{29} alkenes in *O. sphegodes*, which have been proven sufficiently volatile to lure pollinators from a distance as attractants [15]. Furthermore, it is relevant to note that in the case of *O. insectifera* and *A. fargeii*, the orchid and pollinator share the exact same semiochemicals, which is in agreement with other investigated *Ophrys* systems, including *O. sphegodes* [39] and *O. speculum* [17], as well as with most Australian systems [4] (but see [40]).

In conclusion, we have identified (Z)-8-heptadecene (1) and pentadecane (2) as shared semiochemicals from *O. insectifera* and *A. fargeii*. Access to denser populations of *A. fargeii* or *A. mystaceus* would be required to undertake bioassays testing the field activity of these compounds as pollinator attractants. Nevertheless, this study provides an important first step in the identification of key compounds that, once pollinator populations have been located, are available to be tested in field behavioural bioassays. Furthermore, the identification of these semiochemicals and comparison with related species within the genus shows strong commonalities in structures and suggests a conserved biosynthetic pathway for semiochemical production within *Ophrys*.

3. Materials and Methods

3.1. General Experimental Procedures

NMR spectra (Supplementary Materials) were acquired on a Bruker Avance (Bruker, Billerica, MA, USA) 500 or 600 MHz spectrometer with CDCl₃ as solvent. Chemical shifts were calibrated to resonances attributed to the residual solvent signal.

EIMS (70 eV) were recorded on an Agilent 5973 mass detector connected to an Agilent 6890 GC equipped with a DB5-MS column (Agilent, Santa Clara, CA, USA, 50 m × 0.2 mm × 0.33 μm) using helium as the carrier gas.

Semi-preparative gas chromatography was performed on an HP 5890 GC (Agilent, USA), equipped with a three-way glass splitter separating the gas flow post column into the FID and the collector. An RTX-5 column, 30 m × 0.53 mm id × 5 μm film (Restek, Bellefonte, PA, USA) was used. Samples of 3 μL were injected in splitless mode (1 min) and helium was used as the carrier gas. A custom-made manual fraction collector was used, with samples collected in glass capillaries (100 × 1.55 mm id, Hirschmann Laborgeräte, Eberstadt, Germany) positioned in an aluminium holder submerged in a dry ice/acetone bath. All fractions were eluted with dichloromethane and stored at −20 °C until used for microderivatisation experiments [26].

GC-EAD data were recorded using an Agilent 6890 GC equipped with an identical column as the GC-MS and a flame ionization detector (FID) using helium as carrier gas. A GC effluent splitter (split ratio 1:1) was used to split the flow to the FID and EAD. The split for EAD was passed through a Syntech effluent conditioner (Syntech, Buchenbach, Germany) containing a heated transfer line, with the outlet placed in a purified and humidified airstream, where the electrodes holding the antenna were presented. For each EAD run, an excised antenna with the tip cut off, was mounted on a holder consisting of two electrodes using electrode gel. The electrode was connected to a PC via a serial Syntech intelligent data acquisition controller (IDAC) interface for simultaneous recording of the FID and EAD signals in the Syntech software package.

Solvents for extractions and purifications were of HPLC grade.

3.2. Plant Material and Insects

All plants and insects were collected in June over four years (2016–2019) at various field locations in Sweden. *Ophrys insectifera* were sourced from several populations across the central parts of Öland. Flowers were kept in cooler boxes (ca. 4 °C) while transported to the laboratory, where they were either sampled with solid-phase microextraction (SPME), extracted with hexane, dichloromethane or methanol, or kept as baiting flowers to collect male insects. Male *Argogorytes mystaceus* were collected from *O. insectifera* flowers on stems (20 flowers) near Torslunda, Öland or near Södertälje, Södermanland. Female *Argogorytes fargeii* were collected from food plants, *Pastinaca sativa*, near Långöre, Öland.

3.3. Extraction and Isolation

Flowers for SPME were enclosed in oven bags (Multix 25 cm × 38 cm, McPherson's Limited, Kingsgrove, NSW, Australia) and sampled for 24 h (DVB/CAR/PDMS, Supelco, Bellefonte, PA, USA) at room temperature. For solvent extractions, labella were removed and batches of 20 were extracted in each solvent (ca. 1 mL) for 48 h. The extracts were concentrated under a gentle stream of nitrogen at room temperature to a final volume of ca. 0.1 mL, stored at −20 °C and subsequently used for GC-MS and GC-EAD analyses. Female *A. fargeii* were extracted in dichloromethane (ca. 0.5 mL) for 48 h. The extracts were concentrated and treated as for the floral extracts.

3.4. Structure Elucidations of Alkenes

From a concentrated dichloromethane extract of a female *A. fargeii*, the two fractions containing C15-alkenes and C17-alkenes were isolated by semi-preparative GC. Each fraction, in hexane (30 µL), was treated with DMDS (50 µL) and iodine in diethyl ether (5 µL, 60 mg/mL). The reaction mixtures were left at 40 °C in vials over night before being washed with sodium bisulphite (5%) and concentrated to ca. 20 µL under nitrogen before being analysed by GC-MS [41]. The fraction containing C15-alkenes contained two compounds, with characteristic ions for 6-pentadecene (M = 304, fragments m/z = 131, 173) and 7-pentadecene (M = 304, fragments m/z = 145, 159). The fraction containing C17-alkenes contained one monoene and one diene, with characteristic ions for 8-heptadecene (M = 332, fragments m/z = 159, 173, also present in *O. insectifera*) and 6,9-heptadecene (M = 362, fragments m/z = 131, 155, 159, 183, 203 and 231) [42].

3.5. Preparation of Alkenes

All alkenes apart from 7-pentadecene were prepared from the corresponding C16- and C18-carboxylic acids (oleic acid, linoleic acid, palmitoleic acid) via a modified Barton reductive decarboxylation [43]. 7-Pentadecene was synthesised via 7-pentadecyne, prepared from 1-bromoheptyne and octylmagnesium chloride [44]. The alkyne was partially reduced to the *cis*-alkene in a low yield by the method of Obora et al. [45], although in amounts sufficient to our needs.

Supplementary Materials: Supplementary materials (NMR spectra for all semiochemicals) can be found at <http://www.mdpi.com/1422-0067/21/2/620/s1>.

Author Contributions: Conceptualization, B.B. and A.-K.B.-K.; methodology, B.B.; R.M. and G.R.F.; investigation, B.B., A.M.W., A.-K.B.-K.; resources, B.B., R.M. and G.R.F.; writing—original draft preparation, B.B.; writing—review and editing, all authors.; funding acquisition, B.B. All authors have read and agreed to the published version of the manuscript.

Funding: This research was funded by the Australian Research Council, DE160101313.

Acknowledgments: B.B. acknowledges the Australian Research Council for funding (DE160101313). D. Bainbridge is gratefully acknowledged for designing and fabricating the preparative GC collector used in this study. The authors acknowledge the facilities, and the scientific and technical assistance of the Australian Microscopy & Microanalysis Research Facility at the Centre for Microscopy, Characterization & Analysis, The University of Western Australia, a facility funded by the University, State and Commonwealth Governments. The authors thank Kerstin Persson for allowing the use of her land for this study, Bo G. Svenson for assistance with the identification of insects, and Monica Ruibal and Rod Peakall for DNA sequencing of several of our wasp samples, which provided confirmation of our species identification.

Conflicts of Interest: The authors declare no conflict of interest. The funders had no role in the design of the study; in the collection, analyses, or interpretation of data; in the writing of the manuscript, or in the decision to publish the results.

Abbreviations

EAG	Electroantennography
GC	Gas chromatography
EAD	Electroantennographic detection
SAD	Stearoyl-acyl carrier protein desaturase
ACP	Acyl-carrier protein
EIMS	Electron impact mass spectrometry
GCMS	Gas chromatography mass spectrometry
NMR	Nuclear magnetic resonance
FID	Flame ionization detector
HPLC	High-pressure liquid chromatography
SPME	Solid-phase microextraction
DVB	Divinyl benzene
CAR	Carboxen
PDMS	Polydimethylsiloxane
DMDS	Dimethyl disulphide

References

- Correvon, H.; Pouyanne, M.A. Un curieux cas de mimétisme chez les Ophrydées. *Journal de la Société Naturelle Horticole de France* **1916**, *4*, 29–47.
- Coleman, E. Pollination of the orchid *Cryptostylis leptochila*. *Vic. Nat.* **1927**, *44*, 20–23.
- Coleman, E. Pollination of an Australian orchid by the male ichneumonid *Lissopimpla semipunctata* Kirby. *Trans. R. Entomol. Soc. Lond.* **1929**, *76*, 533–539. [[CrossRef](#)]
- Bohman, B.; Flematti, G.R.; Barrow, R.A.; Pichersky, E.; Peakall, R. Pollination by sexual deception—It takes chemistry to work. *Curr. Opin. Plant Biol.* **2016**, *32*, 37–46. [[CrossRef](#)]
- Gaskett, A.C. Orchid pollination by sexual deception: Pollinator perspectives. *Biol. Rev.* **2011**, *86*, 33–75. [[CrossRef](#)]
- Phillips, R.D.; Scaccabarozzi, D.; Retter, B.A.; Hayes, C.; Brown, G.R.; Dixon, K.W.; Peakall, R. Caught in the act: Pollination of sexually deceptive trap-flowers by fungus gnats in *Pterostylis* (Orchidaceae). *Ann. Bot.* **2014**, *113*, 629–641. [[CrossRef](#)]
- Ellis, A.G.; Johnson, S.D. Floral mimicry enhances pollen export: The evolution of pollination by sexual deceit outside of the Orchidaceae. *Am. Nat.* **2010**, *176*, E143–E151. [[CrossRef](#)]
- Vereecken, N.J.; Wilson, C.A.; Hötling, S.; Schulz, S.; Banketov, S.A.; Mardulyn, P. Pre-adaptations and the evolution of pollination by sexual deception: Cope's rule of specialization revisited. *Proc. R. Soc. B Biol. Sci.* **2012**, *279*, 4786–4794. [[CrossRef](#)]
- Kullenberg, B. On the scents and colours of *Ophrys* flowers and their specific pollinators among the aculeate Hymenoptera. *Svensk Botanisk Tidskrift* **1956**, *50*, 25–46.
- Kullenberg, B. Studies in *Ophrys* pollination. *Zoologiska Bidrag Från Uppsala* **1961**, *34*, 1–340.
- Ågren, L.; Borg-Karlson, A.-K. Responses of *Argogorytes* (Hymenoptera: Sphecidae) males to odor signals from *Ophrys insectifera* (Orchidaceae). Preliminary EAG and chemical investigation. *Nova Acta Regiae Soc. Sci. Ups. C Bot. Gen. Geol. Phys. Geogr. Palaeontol. Zool.* **1984**, *3*, 111–117.
- Borg-Karlson, A.-K. Chemical basis for the relationship between *Ophrys* orchids and their pollinators I. Volatile compounds of *Ophrys lutea* and *O. fusca* as insect mimetic attractants/excitants. *Chem. Scr.* **1985**, *25*, 283–294.
- Borg-Karlson, A.K.; Tengö, J. Odor mimetism? *J. Chem. Ecol.* **1986**, *12*, 1927–1941. [[CrossRef](#)] [[PubMed](#)]
- Schiestl, F.P.; Ayasse, M.; Paulus, H.F.; Erdmann, D.; Francke, W. Variation of floral scent emission and postpollination changes in individual flowers of *Ophrys sphegodes* subsp. *Sphogodes*. *J. Chem. Ecol.* **1997**, *23*, 2881–2895. [[CrossRef](#)]
- Schiestl, F.P.; Ayasse, M.; Paulus, H.F.; Löfstedt, C.; Hansson, B.S.; Ibarra, F.; Francke, W. Orchid pollination by sexual swindle. *Nature* **1999**, *399*, 421. [[CrossRef](#)]

16. Mant, J.; Brändli, C.; Vereecken, N.J.; Schulz, C.M.; Francke, W.; Schiestl, F.P. Cuticular hydrocarbons as sex pheromone of the bee *Colletes cunicularius* and the key to its mimicry by the sexually deceptive orchid, *Ophrys exaltata*. *J. Chem. Ecol.* **2005**, *31*, 1765–1787. [[CrossRef](#)] [[PubMed](#)]
17. Ayasse, M.; Schiestl, F.P.; Paulus, H.F.; Ibarra, F.; Francke, W. Pollinator attraction in a sexually deceptive orchid by means of unconventional chemicals. *Proc. R. Soc. Lond. Ser. B Biol. Sci.* **2003**, *270*, 517–522. [[CrossRef](#)]
18. Schiestl, F.P.; Peakall, R.; Mant, J.G.; Ibarra, F.; Schulz, C.; Franke, S.; Francke, W. The chemistry of sexual deception in an orchid-wasp pollination system. *Science* **2003**, *302*, 437–438. [[CrossRef](#)]
19. Bohman, B.; Jeffares, L.; Flematti, G.; Byrne, L.T.; Skelton, B.W.; Phillips, R.D.; Dixon, K.W.; Peakall, R.; Barrow, R.A. Discovery of tetrasubstituted pyrazines as semiochemicals in a sexually deceptive orchid. *J. Nat. Prod.* **2012**, *75*, 1589–1594. [[CrossRef](#)]
20. Bohman, B.; Jeffares, L.; Flematti, G.; Phillips, R.D.; Dixon, K.W.; Peakall, R.; Barrow, R.A. The discovery of 2-hydroxymethyl-3-(3-methylbutyl)-5-methylpyrazine: A semiochemical in orchid pollination. *Org. Lett.* **2012**, *14*, 2576–2578. [[CrossRef](#)]
21. Bohman, B.; Phillips, R.D.; Menz, M.H.M.; Berntsson, B.W.; Flematti, G.R.; Barrow, R.A.; Dixon, K.W.; Peakall, R. Discovery of pyrazines as pollinator sex pheromones and orchid semiochemicals: Implications for the evolution of sexual deception. *New Phytol.* **2014**, *203*, 939–952. [[CrossRef](#)] [[PubMed](#)]
22. Bohman, B.; Tan, M.; Phillips, R.; Scaffidi, A.; Sobolev, A.; Moggach, S.; Flematti, G.; Peakall, R. A specific blend of drakolide and hydroxymethylpyrazines—An unusual pollinator sexual attractant used by the endangered orchid *Drakaea micrantha*. *Angew. Chem. Int. Ed.* **2020**, *59*, 1124–1128. [[CrossRef](#)] [[PubMed](#)]
23. Bohman, B.; Phillips, R.D.; Flematti, G.R.; Barrow, R.A.; Peakall, R. The spider orchid *Caladenia crebra* produces sulfurous pheromone mimics to attract its male wasp pollinator. *Angew. Chem.* **2017**, *56*, 8455–8458. [[CrossRef](#)] [[PubMed](#)]
24. Bohman, B.; Phillips, R.D.; Flematti, G.R.; Peakall, R. (Methylthio)phenol semiochemicals are exploited by deceptive orchids as sexual attractants for *Campylothyrsus thynnine* wasps. *Fitoterapia* **2018**, *126*, 78–82. [[CrossRef](#)] [[PubMed](#)]
25. Xu, H.; Bohman, B.; Wong, D.C.J.; Rodriguez-Delgado, C.; Scaffidi, A.; Flematti, G.R.; Phillips, R.D.; Pichersky, E.; Peakall, R. Complex sexual deception in an orchid is achieved by co-opting two independent biosynthetic pathways for pollinator attraction. *Curr. Biol.* **2017**, *27*, 1867–1877.e5. [[CrossRef](#)]
26. Bohman, B.; Weinstein, A.M.; Phillips, R.D.; Peakall, R.; Flematti, G.R. 2-(Tetrahydrofuran-2-yl)acetic acid and ester derivatives as long-range pollinator attractants in the sexually deceptive orchid *Cryptostylis ovata*. *J. Nat. Prod.* **2019**, *82*, 1107–1113. [[CrossRef](#)]
27. Schlüter, P.M.; Schiestl, F.P. Molecular mechanisms of floral mimicry in orchids. *Trends Plant Sci.* **2008**, *13*, 228–235. [[CrossRef](#)]
28. Samuels, L.; Kunst, L.; Jetter, R. Sealing plant surfaces: Cuticular wax formation by epidermal cells. *Annu. Rev. Plant Biol.* **2008**, *59*, 683–707. [[CrossRef](#)]
29. Schlüter, P.M.; Xu, S.; Gagliardini, V.; Whittle, E.; Shanklin, J.; Grossniklaus, U.; Schiestl, F.P. Stearoyl-acyl carrier protein desaturases are associated with floral isolation in sexually deceptive orchids. *Proc. Natl. Acad. Sci. USA* **2011**, *108*, 5696–5701. [[CrossRef](#)]
30. Sedek, K.E.M.; Qi, W.; Schauer, M.A.; Gupta, A.K.; Poveda, L.; Xu, S.; Liu, Z.-J.; Grossniklaus, U.; Schiestl, F.P.; Schlüter, P.M. Transcriptome and proteome data reveal candidate genes for pollinator attraction in sexually deceptive orchids. *PLoS ONE* **2013**, *8*, e64621. [[CrossRef](#)]
31. Xu, S.; Schlüter, P.M.; Grossniklaus, U.; Schiestl, F.P. The genetic basis of pollinator adaptation in a sexually deceptive orchid. *PLOS Genet.* **2012**, *8*, e1002889. [[CrossRef](#)] [[PubMed](#)]
32. Sedek, K.E.; Whittle, E.; Guthörl, D.; Grossniklaus, U.; Shanklin, J.; Schlüter, P.M. Amino acid change in an orchid desaturase enables mimicry of the pollinator's sex pheromone. *Curr. Biol.* **2016**, *26*, 1505–1511. [[CrossRef](#)] [[PubMed](#)]
33. Breitkopf, H.; Onstein, R.E.; Cafasso, D.; Schlüter, P.M.; Cozzolino, S. Multiple shifts to different pollinators fuelled rapid diversification in sexually deceptive *Ophrys* orchids. *New Phytol.* **2015**, *207*, 377–389. [[CrossRef](#)] [[PubMed](#)]
34. Devey, D.S.; Bateman, R.M.; Fay, M.F.; Hawkins, J.A. Friends or relatives? Phylogenetics and species delimitation in the controversial European orchid genus *Ophrys*. *Ann. Bot.* **2008**, *101*, 385–402. [[CrossRef](#)] [[PubMed](#)]

35. Tyteca, D.; Baguette, M. *Ophrys* (Orchidaceae) systematics—When molecular phylogenetics, morphology and biology reconcile. *Berichte aus den Arbeitskreisen Heimische Orchideen* **2017**, *34*, 37–103.
36. Bateman, R.M. Two bees or not two bees? An overview of *Ophrys* systematics. *Berichte aus den Arbeitskreisen Heimische Orchideen* **2018**, *35*, 5–46.
37. Piñeiro Fernández, L.; Byers, K.J.; Cai, J.; Sedeek, K.E.; Kellenberger, R.T.; Russo, A.; Qi, W.; Aquino Fournier, C.; Schlüter, P.M. A phylogenomic analysis of the floral transcriptomes of sexually deceptive and rewarding european orchids, *Ophrys* and *Gymnadenia*. *Front. Plant Sci.* **2019**, *10*, 1553. [[CrossRef](#)]
38. Borg-Karlson, A.-K. Chemical basis for the relationship between *Ophrys* orchids and their pollinators III. Volatile compounds of species in the *Ophrys* sections Fuciflorae and Bombyliflorae as insect mimetic attractants/excitants. *Chem. Scr.* **1987**, *27*, 313–325.
39. Schiestl, F.P.; Ayasse, M.; Paulus, H.F.; Löfstedt, C.; Hansson, B.S.; Ibarra, F.; Francke, W. Sex pheromone mimicry in the early spider orchid (*Ophrys sphegodes*): Patterns of hydrocarbons as the key mechanism for pollination by sexual deception. *J. Comp. Physiol. A* **2000**, *186*, 567–574. [[CrossRef](#)]
40. Bohman, B.; Peakall, R. Pyrazines attract *Catocheilus* thynnine wasps. *Insects* **2014**, *5*, 474–487. [[CrossRef](#)]
41. Buser, H.R.; Arn, H.; Guerin, P.; Rauscher, S. Determination of double bond position in mono-unsaturated acetates by mass spectrometry of dimethyl disulfide adducts. *Anal. Chem.* **1983**, *55*, 818–822. [[CrossRef](#)]
42. Kuwahara, Y.; Ohshima, M.; Sato, M.; Kurosa, K.; Matsuyama, S.; Suzuki, T. Chemical ecology of astigmatid mites XI Identification of the alarm pheromone and new C17 hydrocarbons from *Tortonia* sp., a pest attacking the nest of *Osmia cornifrons*. *Appl. Entomol. Zool.* **1995**, *30*, 177–184. [[CrossRef](#)]
43. Ko, E.J.; Savage, G.P.; Williams, C.M.; Tsanaktsidis, J. Reducing the cost, smell, and toxicity of the Barton reductive decarboxylation: Chloroform as the hydrogen atom source. *Org. Lett.* **2011**, *13*, 1944–1947. [[CrossRef](#)] [[PubMed](#)]
44. Cahiez, G.; Gager, O.; Buendia, J. Copper-catalyzed cross-coupling of alkyl and aryl grignard reagents with alkynyl halides. *Angew. Chem. Int. Ed.* **2010**, *49*, 1278–1281. [[CrossRef](#)] [[PubMed](#)]
45. Obora, Y.; Moriya, H.; Tokunaga, M.; Tsuji, Y. Cross-coupling reaction of thermally stable titanium (ii)-alkyne complexes with aryl halides catalysed by a nickel complex. *Chem. Commun.* **2003**, 2820–2821. [[CrossRef](#)] [[PubMed](#)]



© 2020 by the authors. Licensee MDPI, Basel, Switzerland. This article is an open access article distributed under the terms and conditions of the Creative Commons Attribution (CC BY) license (<http://creativecommons.org/licenses/by/4.0/>).