



Published in final edited form as:

Anal Methods. 2019 September 7; 11(33): 4220–4232. doi:10.1039/c9ay01328h.

Review of 3D Cell Culture with Analysis in Microfluidic Systems

Andre D. Castiaux¹, Dana M. Spence², R. Scott Martin¹

¹Department of Chemistry, Saint Louis University, 3501 Laclede Ave., St. Louis, MO 63103

²Department of Biomedical Engineering, Institute for Quantitative Health Science & Engineering, Michigan State University, East Lansing, MI, 48824

Abstract

A review with 105 references that analyzes the emerging research area of 3D cell culture in microfluidic platforms with integrated detection schemes. Over the last several decades a central focus of cell culture has been the development of better *in vivo* mimics. This has led to the evolution from planar cell culture to cell culture on 3D scaffolds, and the incorporation of cell scaffolds into microfluidic devices. Specifically, this review explores the incorporation of suspension culture, hydrogels scaffolds, paper-based scaffolds, and fiber-based scaffolds into microfluidic platforms. In order to decrease analysis time, simplify sample preparation, monitor key signaling pathways involved in cell-to-cell communication or cell growth, and combat the limitations of sample volume/ dilution seen in traditional assays, researchers have also started to focus on integrating detection schemes into the cell culture devices. This review will highlight the work that has been performed towards combining these techniques and will discuss potential future directions. It is clear that microfluidic-based 3D cell culture coupled with quantitative analysis can greatly improve our ability to mimic and understand *in vivo* systems.

Introduction

Cell culture, as it is known today, began in the late 1800's with the harvesting of cells from animal tissue and culturing or maintaining the tissue in natural media such as lymph fluid or plasma.^{1–3} As interest in different cell lines grew, an understanding of what was necessary for cell health and longevity also grew. This spurred the development of partially synthetic, and then fully synthetic media for cell culture (1900's - present).^{4, 5} This has resulted in the development of over 3600 available cell lines originating from over 150 different species according to the American Type Culture Collection.⁶ Using these widely available cell types, researchers have been able to expand our understanding of formation and function of tissues in the body, which has ultimately led to great advances in medicine and health.

The most popular method for maintaining and analyzing adherent cell lines over the last century has been 2D or monolayer culture.^{7, 8} In 2D culture, cells are maintained on a flat surface, most often a plastic culture flask or petri dish (Figure 1A). These surfaces can be easily modified with proteins or other surface functionalities to aid in cell adhesion and increase cell health.^{9–11} The cost of maintaining cells in these flasks is low and protocols

have been developed that are robust and simple, reducing the likelihood of contamination. One can image directly through these substrates making it easy to monitor cell viability and morphology. It is also easy to add reagents and aliquot out samples to analyze the effect of various conditions and stimulations. However, in recent years it has become abundantly clear that while 2D culture is useful, it does not always accurately reflect the 3D environment that cells experience *in vivo*.^{7, 12}

In 2D cell culture, the cells are limited to the surface of a single material, most often plastic (usually polystyrene). This plastic has defined surface characteristics such as roughness, stiffness, and limited binding sites. Due to the fact that the cell is forced to adhere within the plane of the surface, the area of the cell that is exposed to the bulk solution is limited (Figure 1A).¹² This causes several issues with the function of the cell. First, it limits the cell's exposure to chemical gradients by allowing solution access to only a fraction of the cell.⁷ Second, it can lead to a polarity shift within the cell, as the cell is forced to accommodate the new confined geometry, effecting cell function.^{7, 13} Third, the cell is exposed to a continuous source of the surface matrix, in contrast to *in vivo* where cells have discrete attachments.¹² Finally, the surface roughness is very low and the cells can proliferate and migrate without restraint, which is not an accurate mimic of *in vivo* conditions for many cell lines.¹²

In the body, cells interact with a complex extracellular matrix (ECM), where the complications listed above are optimized based on cell type and location within the body. In an attempt to develop systems that better mimic *in vivo* conditions, researchers are increasingly looking to 3D cell culture.^{14–16} A 3D cell culture platform allows cells to grow omni-directionally, unlike 2D cell culture that limits cells to a planar surface (Figure 1).¹² Naturally, a cell has a finite number of adhesion sites distributed in all three dimensions. 3D culture allows the cell to adopt a preferred orientation to optimize the cell polarity, and the cell polarity can change in reaction to a stimulus.¹² Cell proliferation and migration are hindered due to the complex network of fibrils, but signaling molecules and chemical gradients are not hindered and are accessible to the entirety of the cell. It has repeatedly been shown that taking into account the ECM has beneficial effects on the tissue.^{15, 17–19} 3D cell cultures have shown differences in drug response, morphology, and proliferation rates under static culture conditions,^{7, 20–23} while under flow conditions, response and function is enhanced to a greater extent.²⁴ One way to introduce flow to cell culture systems is through the use of microfluidic devices.

Microfluidic systems can be produced in a variety of ways. Polydimethylsiloxane (PDMS) is the preferred material for making microfluidic devices due to its long history, ease of use, gas permeability, and relative low cost.^{25, 26} However, these devices experience problems with lab-to-lab reproducibility and can be time consuming to make. PDMS is also gas permeable, which has advantages for oxygen diffusion into cell culture media but presents problems for long term cell culture where media evaporation can lead to osmolality shifts and possible complications with cell culture.^{26, 27} Additionally, the uncured monomer can leach into the cell culture media or small molecules can diffuse into the material making analyte analysis difficult.^{26, 28} To combat the complications presented by PDMS, microfluidic devices have also been made out of thermo plastics and glass, although each presents challenges in fabrication.²⁹ More recent (last 10 years) advancements have been

made in additive manufacturing, greatly reducing the time of fabrication and increasing lab-to-lab reproducibility. Additive manufacturing, or 3D printing technology, involves automated device assembly in a layer by layer fashion. Extrusion-based printing, stereolithography, and Polyjet are three main techniques of 3D printing applicable to microfluidics.^{30–32} Each of the above techniques can produce devices with channels that reach physiologically relevant dimensions.^{30, 33} This is important for blood cells or endothelial cells that experience shear induced stress *in vivo*. This can allow for more mimetic cell-to-cell communication.

Microfluidic techniques, in conjunction with cell culture, will open avenues for direct analysis of important signaling molecules. Optically transparent materials such as PDMS, glass, or some 3D printed plastics enable direct imaging of fluorescently tagged proteins and cells.^{25, 28, 34–36} In addition, more complex UV-VIS absorbance or fluorescent quantification can be performed for small molecules.^{24, 33, 37} Recently, methods for coupling mass spectrometers and electrochemical detectors to microfluidic systems have been developed.^{38–40} These detection schemes have been facilitated by separation and isolation techniques that are well established on microfluidic chips, including microchip electrophoresis and solid phase extraction.^{40–42}

The integration of conventional 2D cell cultures into microfluidic devices is well characterized and common. However, the benefits of 3D cell culture vastly outweigh the ease in which 2D cell culture can be integrated into microfluidic platforms. Recently, work has shifted to incorporate 3D matrixes into microfluidic platforms, merging the advantages of small volumes and minimal dilution of microfluidics with the *in vivo* behavior of 3D cell culture. This review will discuss the current techniques that have been used to incorporate 3D cell culture into microfluidic platforms. This review will highlight the benefits of each 3D cell culture technique as it relates to cell function, and the ability to develop microfluidic systems to monitor complex cell-to-cell interactions with an emphasis on small molecule detection and quantitation as part of the device function. Ultimately the goal of this review is to provide background on current approaches to perform 3D cell culture in microfluidic devices with a focus on the various methods used to detect key analytes involved in cell-to-cell communication or cell growth.

Methods of 3D Cell Culture

Currently there are several different methods for 3D cell culture, with each method having benefits and disadvantages. In general, the techniques can be split into four categories: Suspension (Figure 1B), hydrogels (Figure 1C), paper-based culture (Figure 1D), and fiber scaffolds (Figure 1E). Suspension techniques involve mostly free-floating clusters of cells, while the last three require a network on which the cells can adhere and proliferate.

Suspension

The general class of suspension cell culture is the oldest form of 3D cell culture and has been around since the development of cell culture.² However, suspension cell culture has been limited to mostly insect cell lines or mammalian cell lines that can be altered to grow under suspension conditions (non-adherent cells).^{43, 44} This is because more mammalian cell

lines are adherent cells that require a surface or scaffold to support its growth. The simplest method of suspension cell culture requires a non-treated culture flask that is agitated to keep cells suspended while they proliferate. Large scale suspension cell culture has primarily been used for the expression of proteins for use as therapeutics or in other bio-reactor applications.^{43–45}

A sub technique of suspension cell culture, which was developed in the late 1800's, is hanging drop cell culture.² Within this droplet a single cell can be cultured into a cluster. While primarily used in embryology, this technique has found applications with a wide variety of mammalian cell lines.^{46–48} This technique is time consuming, often requiring many repetitive pipetting steps that greatly decrease throughput.

Coupling microfluidics with hanging drop cell culture methods can overcome some of these limitations. Wu et al. developed a PDMS based device, shown in Figure 2A, to pump solution through the hanging drops based on pressure differences in reservoirs connected to the microfluidic chip.⁴⁹ In this application, the researchers were able to easily introduce the cells into the droplets and then continuously flow fresh media through the droplets (Figure 2B). Using this device, embryoid bodies were cultured in a high-throughput manner without the tedium of pipetting to supply fresh media.⁴⁹

More complex examples developed by Frey et al. incorporated valves and mixing channels into a 2D array of interconnected wells (Figure 3A).⁵⁰ This device allowed selective introduction of cells down each column via the cell loading ports (Figure 3B) followed by flow perpendicular to the loading direction to allow for cell-to-cell communication (Figure 3B). Using this device, the researchers were able to reproducibly culture spherical microtissues of different cell types for more than 10 days, with no significant difference between cell function using this technique and static spheroid culture. However, their microfluidic technique did not require the labor and time intensive pipetting steps traditionally used.⁵⁰

Hydrogels

Most mammalian cells *in vivo* proliferate on a complex scaffold known as the extra cellular matrix (ECM). In the body this is most often in the form of a hydrated protein matrix that allows for cell adhesion as well as a template for 3D cell growth. One solution to better mimicking this system was the development of hydrogels for cell culture.^{51, 52} Hydrogels are composed of one or many different hydrophilic polymers having a polymerization pattern that enables cells and molecules to move in and out of the pores (Figure 1B). These hydrogel systems provide a 3D scaffold for cell growth and allow small molecules access to more of the cell than planar substrates.

Hydrogels can be made from a wide range of synthetic (polyacrylamide, polyethylene glycol, poly(acrylic acid)) and natural polymers (collagen, fibrin, hyaluronic acid).^{19, 51–54} This range of available materials allows for fine tuning of properties important to cell health and function. These properties include porosity, stiffness, and degradation of the matrix. However, fine tuning these parameters can be time consuming and lead to hydrogel systems that are complicated to produce and keep stable.^{19, 54} Hydrogels have thermal and

mechanical limitations that limit the working conditions and the longevity of the material. It is possible to produce hydrogels on a large scale, but there can be issues in uniformity and batch-to-batch consistency.^{19, 51} Cells can be introduced to hydrogel matrixes either during or after polymerization depending on the cell line used or experimental factors being explored.⁵¹

The seminal work incorporating hydrogels into microfluidic devices was performed by Beebe's group and utilized passive pumping in microchannel arrays (Figure 4).^{55–57} Passive pumping moves solutions based on pressure differences. By placing a fresh droplet of media on the inlet reservoir, it will push fresh solution through the microchannel to the outlet reservoir until the pressure of droplet remaining at the inlet equals that formed at the outlet.⁵⁶ This work utilized 3D collagen gels as the substrate for the co-culture of human breast carcinoma cells (T47D) and normal human mammary fibroblasts.⁵⁸ A direct comparison between cells cultured in the microwell arrays and cells cultured in a standard 12-well culture plate was performed. Through image analysis of the cells, the group was able to determine that the cells could be cultured in microfluidic channels (2 μ L) without effecting cell behavior.⁵⁸

Beebe's original studies involving collagen gels proved viable for cell culture in a system that is also amenable to high throughput. Since the development in the late 2000's the complexity of such systems has grown greatly. There are now techniques for obtaining aligned collagen gels within microchannels a video publication by Burkel et al.⁵⁹ A more complex PDMS device was reported by Chung et al. in which a three channel system separated by a porous collagen gel was employed to observe the migration of endothelial cells under various conditions, including co-culture (Figure 5).⁶⁰ By culturing the endothelial cells in the center channel, they were able to use one side channel as a control and introduce growth factors or other cells into the remaining side channel. Endothelial cell health and migration was monitored by imaging on the PDMS-based device for 5 days.⁶⁰

Another example of co-culture comes from Bischel et al. in which they explored the interplay between osteotropic prostate cancer cells and bone marrow stromal cells cultured in a hydrogel scaffold.⁶¹ Bone marrow stromal cells were cultured to the side of a microfluidic channel, followed by filling of the channel with prostate cancer cells embedded in collagen hydrogel (Figure 6).⁶¹ Through imaging analysis, it was determined that co-culture of the osteotropic prostate cancer cells with the bone marrow stromal cells increased the invasive capacity of the cancer cells.⁶¹

More recently 3D printing has become prevalent in microfluidic fabrication. Concurrent with this technology has been the development of 3D printed hydrogels. These new hydrogel fabrication techniques include stereolithography methods and extrusion-based bio-plotter methods.^{35, 62–65} For now, most of the work has centered around the production of stand-alone hydrogel systems. However, through multi-material printing capabilities 3D printed hydrogel scaffolds could be directly incorporated into rigid structures during the print process.

Paper Cell Culture

While hydrogels require the synthesis of material as needed, paper-based cell culture provides similar scaffolding that is less labor intensive. Paper-based cell culture relies on commercially available paper scaffolds for 3D cell culture.^{66–69} The cellulose matrix of paper allows a rigid scaffold that can be folded into complex geometries, as well as a porous structure for cell growth in a 3D format.^{66–69} The porous structure also serves as a mimic to monitor cell migration. Paper-based culture has distinct advantages over hydrogel applications when considering the material's rigidity and thermal stability,⁶⁷ which enable a wide range of surface modifications including chemical treatment, plasma treatments, and sterilization techniques. Additionally, well-established patterning techniques utilizing hydrophobic wax allows defined microfluidic networks to be developed on a single sheet of paper or between multiple, stacked paper sheets.^{70–73} However, paper-based techniques do have limitations when considered as an *in vivo* mimic. The material is mostly cellulose-based and requires modification of the paper material with ECM proteins.⁶⁷ Additionally, the fiber diameter for most paper-based systems is relatively large ($> 1 \mu\text{m}$),⁷⁴ compared to the 500 nm size of most fibrils in the body.⁷⁵

Incorporation of paper based scaffolds into microfluidics using traditional lithography techniques was reported by Martinez et al. in 2007.⁷³ By the year 2009 the technique was independently revamped by Lu et al. and Carrilho et al. for high throughput production using wax printing technology.^{70, 76} The use of wax printing to create hydrophobic barriers into the paper microfluidic devices has grown in complexity and includes the addition of cell culture.^{35, 69, 71, 72} There are very few cases of direct cell culture on paper based microfluidic devices, although one such study by Tao et al. described a cell culture platform with four areas for cell culture connected by two channels in a T-design (Figure 7).⁷⁴ Cells were seeded directly on the culture areas by pipetting and behaved the same as cells cultured in standard hydrogel conditions. The use of paper in microfluidic devices is almost exclusively coupled with hydrogel culture. Some of the earliest applications used stacked paper to construct layered systems that were accessible to the cells. The layers are fluidically connected via hydrogel systems impregnated with cells in the paper scaffold (Figure 8).⁶⁶ Derda et al. was one of the first to report this method using MDA-MB-231 cells grown in 8 layers of paper.⁶⁶ These layers, 200 μm thick each, represent the distance the cells are from fresh media. Using the paper layers to separate cells from fresh media requires oxygen, fresh nutrients, and cells secretions to diffuse in and out of the system through the microstructure developed by the paper.⁶⁶ Ultimately the group was able to separate the layers to analyze cell proliferation as a function of depth in the system. Since the cells were still intact after separating, they were also able to characterize cell recovery after exposure to optimal growth conditions. Mosadegh et al. later developed a modified version to explore chemotaxis of cancer cells and discovered that different cell types could be classified by their rate of chemotaxis.⁷⁷

While the above work relied on the microfluidic structures of the paper, there are more complex examples in which microfluidic structures were patterned on paper substrate. Kenney et al. patterned channels onto Whatman 105 lens paper,⁷⁸ which was then sandwiched between either a PDMS layer and a cellulose acetate layer or between two

cellulose acetate layers. This format allowed the researchers to selectively control gas diffusion to the cell culture. Using this device, the chemotaxis of breast adenocarcinoma cells was monitored under different oxygen gradients and it was determined that these cells migrate based on available oxygen gradients.⁷⁸ While the optical transparency of the device enabled imaging of the cells, later iterations incorporated a pH-sensing thin film directly under the cell culture scaffold.⁷⁹ The thin film contained pH sensitive fluorescent dyes that could be imaged through the acrylic holder allowing real-time monitoring of the pH.⁷⁹

Fiber Scaffolds

The final 3D cell culture method discussed in this review involves the use of fiber scaffolds. It combines the freedom of material provided by hydrogels with the scaffold of paper-based cell culture. There are several methods for producing nanofibers that include solution blow spinning, melt spinning, and electrospinning.^{80–85} Each of these techniques can produce both natural (collagen, gelatin, silk fibroin) and synthetic fibers (polycaprolactone, polyurethane, polystyrene). The fibers can be tuned to sizes ranging from 10's of microns down to 10 nano- meter diameters similar to the extracellular matrix.^{81, 84} Various materials can be blended together to tune the structural properties of the material making the fiber mat stronger or preventing degradation.

Fiber scaffolds have found a wide range of applications and can be used under static cell culture or under flow conditions. They are stable over a wide range of temperatures.^{80, 86} Synthetic fibers are more stable in solution over long periods of time whereas natural fibers tend to degrade rapidly.^{80, 86, 87} Fiber scaffolds have biological compatibility to the point of being used in wound healing applications.^{17, 88, 89} However, production of electro-spun fibers often requires toxic volatile organic solvents, which have the potential to leach into cell cultures.⁹⁰ Benign aqueous based solvents have been explored in limited applications and has been shown to minimize effects on protein structure.^{91, 92}

Early incorporation of fiber scaffolds incorporated into microfluidic devices was done with PDMS based substrates. One of the earliest was reported in 2008 by Lee et al., who fabricated a channel in a bottom layer of PDMS and then used a top layer of PDMS to sandwich acrylic acid modified polyurethane fibers into the device (Figure 9).⁹³ A loading port open in the top layer enabled cells seeding from the top and culture. Using this device, the importance of the functionality of the extracellular matrix was demonstrated as human mesenchymal stem cell proliferation was faster on acrylic acid modified polyurethane nanofibers than on standard fibers.⁹³ Similarly, Wallin et al. developed an array device in which they were able to pattern different fiber pads within a single microfluidic channel giving them control over parameters such as fiber diameter, alignment, or type (Figure 10).⁹⁴ This fiber array was then coupled to a microfluidic mixer to control drug or media gradients flowing over the cells cultured on the fiber pads. Neural stem cells could be imaged on aligned fibers, while simultaneously applying a chemical gradient to determine that the cell filopodia respond to a greater extent to the chemical gradient than the alignment of the fibers.⁹⁴

More recently Chen et al. explored ways to incorporate fiber scaffolds into a 3D printed microfluidic system,^{24, 95, 96} starting with an electrospinning approach to directly coat the

inside of a channel with polycaprolactone fibers.⁹⁵ Since this device was 3D printed in a hard plastic, printed threads could be included to host standard fittings making it easy to connect tubing to the device. The channels of the 3D printed device were coated with either fibers or protein to compare 2D vs 3D culture of macrophages.⁹⁵ After allowing macrophages growth for 24 hours, the cells were subjected to a circulating stimulation solution (LPS) for 12 hours followed by measurement of cytokine secretion (VEGF and IL-6). They determined that macrophages cultured on a 3D matrix secreted significantly more cytokines than those on a 2D matrix on a per cell basis. This same group has also reported a blow spinning set up that produced fiber scaffolds on an insert that could be fitted into a 3D printed flow channel.⁹⁶ Chen et al. reported a second technique utilizing electrospinning that used a removable insert covered in fibers (Figure 11).²⁴ This device used two inserts stacked on top of each other that were covered with fibers (polystyrene, polycaprolactone, or silk) to make a fluidic channel (Figure 11B). This device enabled cell culture outside of the device statically and then placed in the device for stimulation, then removed again for additional analysis.²⁴ This cell culture module was coupled to a PDMS-based analytical module equipped with an optical fiber for analyzing nitrite via the Griess reaction (discussed in the next section). Additionally, the researchers were able to image large clusters a macrophage cells, another indicator of *in vivo* like cell growth (Figure 11C).

Analysis in microfluidic-based 3D cell culture systems

An often-ignored factor in microfluidic-based cell culture is the manner in which key chemical messengers or signaling molecules can be detected to gain insights into communication pathways. These types of measurements are especially important in actively changing systems. The desire to integrate detection schemes also informs the fluidic design, as in some cases channel volume and possible dilution needs to be controlled to achieve reasonable detection limits. The following section outlines some of the approaches used for detection of key molecules in microfluidic-based 3D culture.

Imaging

The vast majority of analysis coupled with microfluidic cell culture has involved imaging-based techniques. This includes simple cell counting methods to determine proliferation rates through complex staining protocols coupled with confocal microscopy to evaluate cell viability and cell morphology.^{50, 58, 77, 94, 97, 98} The overwhelming conclusion is that the presence of these complex extracellular matrices affect growth rates, cell morphology, and provides more *in vivo* like cell performance.

One interesting application of imaging-based analysis comes from Bauer et al., where a 3D collagen gel was placed in a microchannel, with breast carcinoma cells being grown under either monoculture or co-culture (with human mammary fibroblasts) conditions. The total cell area was measured and it was found that after 5 days of co-culture the carcinoma cell clusters are larger in size than those seen in mono-culture conditions (Figure 12).⁵⁸ The same group was able to stain for F-actin and Tubulin, proteins important to cell mobility, to monitor neutrophil polarization on 2D and 3D substrates within a microfluidic device.⁹⁹ They were able to show that on a 2D surface the cell displayed a polarized morphology with

a single broad leading edge (Figure 13) while a 3D hydrogel environment forces the cell to have multiple leading edge pseudopods that aid in mobility.⁹⁹

Using a stacked paper based 3D culture platform Mosadegh et al. were able to use fluorescent imaging to map lung cancer cell migration as it is effected by oxygen gradients.⁷⁷ GFP- expressing cells were imaged on each layer of the stack after 24 hours for the following gas and media accessible conditions (Figure 14): gas/media access on top of the stack with cells on the top layer; gas/media access on top of the stack with cells on the bottom layer; gas/media top and bottom with cells in the middle layer; gas access on the top and bottom layers with media being accessible only to the top layer and cells in the center layer. Utilizing a PDMS layer at the bottom of the stack (to allow only gas exchange, Figure 14D) versus an opening at the bottom of the stack (to allow both gas and media exchange, Figure 14C) and seeding the cells in the center of the stack, it was determined that the cells migrated bidirectionally towards the ends of the stack. Since the migration profile was the same in both cases, it was concluded that gas exchange, not media exchange, is the primary factor in cell migration.⁷⁷

Offline Detection

Some work has been done coupling offline detection schemes to microfluidic 3D cell culture. One issue with off-line analysis is the need to collect enough sample so that it can be physically pipetted or transferred from the device. One analysis technique that is compatible with small sample volumes is enzyme-linked immunosorbent assays (ELISA). Kim et al. took this approach to quantify the secretion of albumin and alpha-fetoprotein from HepG2 cells, collecting 2.4 mL samples every 2 days for 14 days total.¹⁰⁰ This time between sample collection limited the temporal resolution but maximized the number of replicates that could be made and the number of proteins that could be analyzed (up to 12). Other common methods include the lysis of the cells and subsequent RNA analysis or quantitative PCR analysis.^{95, 100–102}

Another approach for offline analysis comes is the use of MALDI imaging mass spectrometry as reported by LaBonia et al.¹⁰³ In this instance, tumor spheroids were cultured in a transwell insert above a fluidic channel. This allowed dosage of the spheroid that could be removed later for analysis. Using MALDI-IMS the entire tumor cluster could be mapped for both the drug and the active metabolite, allowing a more complete picture of the effects of dosing on the spheroid system.

Online Detection

The advantages of on-line detection include the ability to continuously monitor the system of interest (improving temporal resolution) and minimizing dilution effects that are often seen in off-line detection schemes. The ability to integrate online detection depends greatly on the scaffold material chosen. Paper-based analysis of small molecules and proteins is becoming common place but has not been widely coupled to cell culture.⁷³ One such example comes from Lei et al., who used a paper substrate for the cell co-culture then fluidically connected the cell growth areas with a hydrogel channel layer.¹⁰¹ As part of their analysis it was determined cell phosphorylation solutions using a commonly used

colorimetric immunoassay could be pipetted directly on the cell culture areas. While this is only one example of direct colorimetric analysis coupled to 3D cell culture, the area of paper based colorimetric analysis is robust and well-reviewed.¹⁰⁴

More recently advances have been made on inline detection of analytes relevant to 3D cell culture in a more modular approach. In 2018 Chen et al. developed an insert-based 3D printed device in which a fiber scaffold with cultured cells could be easily inserted and removed.²⁴ This device had a threaded component on either end such that tubing could be easily attached. This allowed connection of the cell module to a flow-based absorbance system (Figure 15A). Using the cell module attached to a mixing T, Griess reagent was mixed in-line with the cell effluent. This mixed solution then flowed through a PDMS-device that was fitted with two optical fibers on either side of the channel, one fiber being connected to a tungsten lamp and the other leading to a photodiode array. The PDMS-based absorbance module was able to detect the colorimetric product from the Griess reaction with nitrite (a marker of the M1 macrophage phenotype). Using this set up they were able to determine that stimulated macrophages cultured on a 3D matrix rather than a 2D matrix can be promoted to the M1 state in a more *in vivo*-like timescale.

By utilizing electrodes fabricated in threaded fittings, Erkal et al. were able to electrochemically quantify oxygen and nitric oxide levels in a 3D printed fluidic device (Figure 15B).³⁹ The researchers were able to develop a fabrication technique in which multiple electrode materials (Au, Ag/AgCl, Pd, Pt) could be embedded into a commercially available PEEK fitting, which could be threaded into a fluidic device as desired. These devices were used to show the feasibility of measuring dopamine and nitric oxide standards, as well as oxygen in a flowing stream of red blood cells.³⁹ Using similar electrode materials but with a wall-jet electrode and the previously mentioned insert-based 3D fiber/cell culture platform, Munshi et al. were able to quantify nitric oxide release from ATP-stimulated endothelial cells.¹⁰⁵

Mehl et al. later reported a similar fiber-based cell culture device that could be interfaced to traditional PDMS-based analysis chips (Figure 15C).⁴¹ Ultimately, they were able to interface a cell culture module with a microchip-based electrophoresis PDMS/valving chip with integrated electrochemical detection for detection of both norepinephrine and dopamine release from PC12 cells.⁴¹ This approach used 3 syringe pumps, 2 for the attrition of either buffer or a stimulating solution on the cell culture side and 1 to withdraw solution through a PDMS electrophoresis pump. The interface between the two devices was a small reservoir droplet. By matching the flow rates of the pump, cell release solutions could be coupled to an electrophoretic separation technique (with injections via on-chip valves). It was found that two analytes released from PC 12 cells (dopamine and norepinephrine) could be simultaneously separated and detected in near real-time (Figure 15C).⁴¹

Conclusions

We have presented an overview of the work being performed in the combined areas of 3D cell culture, microfluidics, and integrated analysis. There are four main approaches when it comes to 3D cell culture (suspension, hydrogel, paper, and fiber), all with applications that

can be integrated with microfluidic techniques; however, joining of the two techniques has been relatively slow in the community. Clear advantages have been demonstrated when attempting to mimic *in vivo* environments and complex cell-to-cell interactions. It is clear that microfluidic-based 3D cell culture coupled with analysis can greatly improve our ability to mimic and understand *in vivo* systems.

Future directions can focus on better characterization of these complex cell-to-ECM and cell-to-cell interactions. While the majority of the analysis has focus on cell morphology such as alignment, migration, or proliferation rates this yields an incomplete picture. It has been repeatedly shown that all of these parameters affect cell signaling pathways that are not being fully explored. Another area for future exploration is the quantification of small molecule uptake and release as well as protein expression. The limited work done thus far often lacks temporal resolution so that measurements are on time scales relevant to cell function. Real-time analysis is a must for understanding these complex reactions and the microfluidic design needs to be informed by the method of detection integration. We expect the intermingling of complex ECMs with microfluidic cell culture and analysis to be a robust research area moving forward.

Acknowledgments

Support from the National Institutes of Health (NS105888) is acknowledged.

References

1. Harrison RG, Greenman MJ, Mall FP and Jackson CM, *The Anatomical Record*, 1907, 1, 116–128.
2. Parker RC, *Methods of Tissue Culture*, 1938.
3. Jacoby F and Darke SJ, *Nature*, 1948, 161, 768–769. [PubMed: 18860286]
4. Coriell LL, Greene AE and Silver RK, *Cryobiology*, 1964, 1, 72–79.
5. Barnes D and Sato G, *Cell*, 1980, 22, 649–655. [PubMed: 7460009]
6. Gurvinder K and Dufour J, *Spermatogenesis*, 2012, 2, 1–5. [PubMed: 22553484]
7. Kapalczyńska M, Kolenda T, Przybyła W, Zajaczkowska M, Teresiak A, Filas V, Ibbs M, Blizniak R, Luczewski L and Lamperska K, *Archives of Medical Science*, 2018, 14, 910–919. [PubMed: 30002710]
8. Mitry RR and Hughes RD, *Human Cell Culture Protocols*, 2012.
9. Amstein CF and Hartman PA, *Journal of Clinical Microbiology*, 1975, 2, 46–54. [PubMed: 818106]
10. Ramsey WS, Hertl W, Nowlan ED and Binkowski NJ, *In Vitro*, 1984, 20, 802–808. [PubMed: 6519665]
11. Shen M and Horbett TA, *Journal of Biomedical Materials Research*, 2001, 57, 336–345. [PubMed: 11523028]
12. Duval K, Grover H, Han LH, Mou Y, Pegoraro AF, Fredberg J and Chen Z, *Physiology*, 2017, 32, 266–277. [PubMed: 28615311]
13. Kosoff D, Yu J, Suresh V, Beebe DJ and Lang JM, *Lab on a Chip*, 2018, 18, 3011–3017. [PubMed: 30131982]
14. Haycock JW, *3D Cell Culture*, Humana Press, 2011.
15. Huh D, Hamilton GA and Ingber DE, *Trends Cell Biology*, 2011, 21, 745–754.
16. Dhaliwal A, *Materials and Methods*, 2012, 2.
17. Mirbagheri M, Adibnia V, Hughes BR, Waldman SD, Banquy X and Hwang DK, *Materials Horizons*, 2019, 6, 45–71.

18. Maltman DJ and Przyborski SA, *Biochemical Society Transactions*, 2010, 38, 1072–1075. [PubMed: 20659006]
19. Tibbitt MW and Anseth KS, *Biotechnology and Bioengineering*, 2009, 103, 655–663. [PubMed: 19472329]
20. Hanson Shepherd JN, Parker ST, Shepherd RF, Gillette MU, Lewis JA and Nuzzo RG, *Advanced Functional Materials*, 2011, 21, 47–54. [PubMed: 21709750]
21. Pupinyo N, Chatatikun M, Chiabchalard A and Laiwattanapaisal W, *Analyst*, 2018, 144, 290–298. [PubMed: 30402635]
22. Chung S, Lim GJ and Lee JY, *Scientific Reports*, 2019, 9, 1–9. [PubMed: 30626917]
23. Breslin S and O'Driscoll L, *Drug Discovery Today*, 2013, 18, 240–249. [PubMed: 23073387]
24. Chen C, Townsend AD, Hayter EA, Birk HM, Sell SA and Martin RS, *Analytical and Bioanalytical Chemistry*, 2018, 410, 3025–3035. [PubMed: 29536154]
25. Sia SK and Whitesides GM, *Electrophoresis*, 2003, 24, 3563–3576. [PubMed: 14613181]
26. Torino S, Corrado B, Iodice M and Coppola G, *Inventions*, 2018, 3, 1–14.
27. Heo YS, Cabrera LM, Song JW, Futai N, Tung YC, Smith GD and Takayama S, *Analytical Chemistry*, 2007, 79, 1126–1134. [PubMed: 17263345]
28. Regehr KJ, Domenech M, Koepsel JT, Carver KC, Ellison-Zelski SJ, Murphy WL, Schuler LA, Alarid ET and Beebe DJ, *Lab on a Chip*, 2009, 9, 2132–2139. [PubMed: 19606288]
29. Gale B, Jafek A, Lambert C, Goenner B, Moghimifam H, Nze U and Kamarapu S, *Inventions*, 2018, 3, 1–25.
30. Waheed S, Cabot JM, Macdonald NP, Lewis T, Guijt RM, Paull B and Breadmore MC, *Lab on a Chip*, 2016, 16, 1993–2013. [PubMed: 27146365]
31. Chen C, Mehl BT, Munshi AS, Townsend AD, Spence DM and Martin RS, *Analytical Methods*, 2016, 8, 6005–6012. [PubMed: 27617038]
32. Gross BC, Erkal JL, Lockwood SY, Chen C and Spence DM, *Analytical Chemistry*, 2014, 86, 3240–3253. [PubMed: 24432804]
33. Castiaux AD, Pinger CW, Hayter EA, Bunn ME, Martin RS and Spence DM, *Analytical Chemistry*, 2019, 91, 6910–6917. [PubMed: 31035747]
34. Gao Y, Majumdar D, Jovanovic B, Shaifer C, Lin PC, Zijlstra A, Webb DJ and Li D, *Biomedical Microdevices*, 2011, 13, 539–548. [PubMed: 21424383]
35. Knowlton S, Yu CH, Ersoy F, Emadi S, Khademhosseini A and Tasoglu S, *Biofabrication*, 2016, 8, 1–13.
36. Halldorsson S, Lucumi E, Gomez-Sjoberg R and Fleming RMT, *Biosensors and Bioelectronics*, 2015, 63, 218–231. [PubMed: 25105943]
37. Sibbitts J, Sellens KA, Jia S, Klasner SA and Culbertson CT, *Analytical Chemistry*, 2018, 90, 65–85. [PubMed: 29141134]
38. Wang X, Yi L, Mukhitov N, Schrell AM, Dhumpa R and Roper MG, *Journal of Chromatography A*, 2015, 1382, 98–116. [PubMed: 25458901]
39. Erkal JL, Selimovic A, Gross BC, Lockwood SY, Walton EL, McNamara S, Martin RS and Spence DM, *Lab on a Chip*, 2014, 14, 2023–2032. [PubMed: 24763966]
40. Dugan CE, Grinias JP, Parlee SD, El-Azzouny M, Evans CR and Kennedy RT, *Analytical and Bioanalytical Chemistry*, 2017, 409, 169–178. [PubMed: 27761614]
41. Mehl BT and Martin RS, *Analytical Methods*, 2019, 11, 1064–1072. [PubMed: 31244918]
42. Lacher NA, Lunte SM and Martin RS, *Analytical Chemistry*, 2004, 76, 2482–2491. [PubMed: 15117187]
43. Collins SJ, Gallo RC and Gallagher RE, *Nature*, 1977, 270, 347–349. [PubMed: 271272]
44. Wu J, King G, Daugulis AJ, Faulkner P, Bone DH and Goosen MFA, *Applied Microbiology and Biotechnology*, 1989, 32, 249–255.
45. Chu L and Robinson DK, *Current Opinion in Biotechnology*, 2001, 12, 180–187. [PubMed: 11287235]
46. Naivs A, *The Embryo Project Encyclopedia*, 2007.
47. Foty R, *Journal of Visualized Experiments*, 2011, 51, 1–4.

48. Shri M, Agrawal H, Rani P, Singh D and Onteru SK, *Scientific Reports*, 2017, 7, 1–14. [PubMed: 28127051]
49. Wu HW, Hsiao YH, Chen CC, Yet SF and Hsu CH, *Molecules*, 2016, 21, 1–11.
50. Frey O, Misun PM, Fluri DA, Hengstler JG and Hierlemann A, *Nature Communications*, 2014, 5, 1–11.
51. Caliri SR and Burdick JA, *Nature Methods*, 2016, 13, 405–414. [PubMed: 27123816]
52. Chirani N, Yahia LH, Gritsch L, Motta FL, CHirani S and Fare S, *Journal of Biomedical Sciences*, 2016, 4, 1–23.
53. Cushing MC and Anseth KS, *Science*, 2007, 316, 1133–1134. [PubMed: 17525324]
54. Antoine EE, Vlachos PP and Rylander MN, *Tissue Engineering: Part B*, 2014, 20, 683–696.
55. Meyvantsson I, Warrick JW, Hayes S, Skoien A and Beebe DJ, *Lab on a Chip*, 2008, 8, 717–724. [PubMed: 18432341]
56. Walker G and Beebe DJ, *Lab on a Chip*, 2002, 2, 131–134. [PubMed: 15100822]
57. Young EW and Beebe DJ, *Chemical Society Reviews*, 2010, 39, 1036–1048. [PubMed: 20179823]
58. Bauer M, Su G, Beebe DJ and Friedl A, *Integrative Biology*, 2010, 2, 371–378. [PubMed: 20577680]
59. Burkel B, Morris BA, Ponik SM, Riching KM, Eliceiri KW and Keely PJ, *Journal of Visualized Experiments*, 2016, 111, 1–7.
60. Chung S, Sudo R, Mack PJ, Wan CR, Vickerman V and Kamm RD, *Lab on a Chip*, 2009, 9, 269–275. [PubMed: 19107284]
61. Bischel LL, Casavant BP, Young PA, Eliceiri KW, Basu HS and Beebe DJ, *Integrative Biology*, 2014, 6, 627–635. [PubMed: 24791272]
62. Li H, Tan C and Li L, *Materials & Design*, 2018, 159, 20–38.
63. He Y, Yang F, Zhao H, Gao Q, Xia B and Fu J, *Scientific Reports*, 2016, 6, 1–13. [PubMed: 28442746]
64. You S, Li J, Zhu W, Yu C, Mei D and Chen S, *Journal of Materials Chemistry B*, 2018, 6, 2187–2197. [PubMed: 30319779]
65. Contessi Negrini N, Bonetti L, Contili L and Farè S, *Bioprinting*, 2018, 10, 1–10.
66. Derda R, Laromaine A, Mammoto A, Tang SK, Mammoto T, Ingber DE and Whitesides GM, *PNAS*, 2009, 106, 18457–18462. [PubMed: 19846768]
67. Ng K, Gao B, Yong KW, Li Y, Shi M, Zhao X, Li Z, Zhang X, Pingguan-Murphy B, Yang H and Xu F, *Materials Today*, 2017, 20, 32–44.
68. Wu X, Suvarnapathaki S, Walsh K and Camci-Unal G, *MRS Communications*, 2018, 8, 1–14.
69. Mahadeva SK, Walus K and Stoeber B, *ACS Applied Materials and Interfaces*, 2015, 7, 8345–8362. [PubMed: 25745887]
70. Carrilho E, Martinez AW and Whitesides GM, *Analytical Chemistry*, 2009, 81, 7091–7095. [PubMed: 20337388]
71. Martinez AW, Phillips ST and Whitesides GM, *PNAS*, 2008, 105, 19606–19611. [PubMed: 19064929]
72. Akyazi T, Basabe-Desmots L and Benito-Lopez F, *Analytica Chimica Acta*, 2018, 1001, 1–17. [PubMed: 29291790]
73. Martinez AW, Phillips ST, Butte MJ and Whitesides GM, *Angewandte Chemie*, 2007, 46, 1318–1320. [PubMed: 17211899]
74. Tao FF, Xiao X, Lei KF and Lee IC, *BioChip Journal*, 2015, 9, 97–104.
75. Matthews JA, Wnek GE, Simpson DG and Bowlin GL, *Biomacromolecules*, 2002, 3, 232–238. [PubMed: 11888306]
76. Lu Y, Shi W, Jiang L, Qin J and Lin B, *Electrophoresis*, 2009, 30, 1497–1500. [PubMed: 19340829]
77. Mosadegh B, Lockett MR, Minn KT, Simon KA, Gilbert K, Hillier S, Newsome D, Li H, Hall AB, Boucher DM, Eustace BK and Whitesides GM, *Biomaterials*, 2015, 52, 262–271. [PubMed: 25818432]

78. Kenney RM, Boyce MW, Truong AS, Bagnell CR and Lockett MR, *Analyst*, 2016, 141, 661–668. [PubMed: 26548584]
79. Kenney RM, Boyce MW, Whitman NA, Kromhout BP and Lockett MR, *Analytical Chemistry*, 2018, 90, 2376–2383. [PubMed: 29323486]
80. Alazaba M, Mitchellb GR, Davisd FJ and Mohand SD, *Procedia Manufacturing*, 2017, 12, 66–78.
81. Schiffman JD and Schauer CL, *Polymer Reviews*, 2008, 48, 317–352.
82. Zander NE, *Journal of Applied Polymer Science*, 2015, 132, 41269–41269.
83. Chung S, Ingle NP, Montero GA, Kim SH and King MW, *Acta Biomaterialia*, 2010, 6, 1958–1967. [PubMed: 20004258]
84. Medeiros ES, Glenn GM, Klamczynski AP, Orts WJ and Mattoso LHC, *Journal of Applied Polymer Science*, 2009, 113, 2322–2330.
85. Daristotle JL, Behrens AM, Sandler AD and Kofinas P, *ACS Applied Materials and Interfaces*, 2016, 8, 34951–34963. [PubMed: 27966857]
86. Leach MK, Feng ZQ, Tuck SJ and Corey JM, *Journal of Visualized Experiments*, 2011, 47, 1–4.
87. Liu T, Teng WK, Chan BP and Chew SY, *Journal of Biomedical Materials Research*, 2010, 95, 276–282.
88. Xue J, Xie J, Liu W and Xia Y, *Accounts of Chemical Research*, 2017, 50, 1976–1987. [PubMed: 28777535]
89. Jha BS, Ayres CE, Bowman JR, Telemeco TA, Sell SA, Bowlin GL and Simpson DG, *Journal of Nanomaterials*, 2011, 2011, 1–15. [PubMed: 21808638]
90. Jin Nam YH, Agarwal Sudha, Lannutti John, *Journal of Applied Polymer Science*, 2007, 107, 1547–1554.
91. Elamparithi A, Punnoose AM and Kuruvilla S, *Artificial Cells, Nanomedicine, and Biotechnology*, 2016, 44, 1318–1325.
92. Dong B, Arnoult O, Smith ME and Wnek GE, *Macromolecular Rapid Communications*, 2009, 30, 539–542. [PubMed: 21706638]
93. Lee KH, Kwon GH, Shin SJ, Baek JY, Han DK, Park Y and Lee SH, *Journal of Biomedical Materials Research*, 2009, 90, 619–628. [PubMed: 18546183]
94. Wallin P, Zanden C, Carlberg B, Hellstrom Erkenstam N, Liu J and Gold J, *Biomicrofluidics*, 2012, 6, 1–18.
95. Chen C, Mehl BT, Sell SA and Martin RS, *Analyst*, 2016, 141, 5311–5320. [PubMed: 27373715]
96. Chen C, Townsend AD, Sell SA and Martin RS, *Analytical Methods*, 2017, 9, 3274–3283. [PubMed: 28690683]
97. Aijian AP and Garrell RL, *Journal of Laboratory Automation*, 2015, 20, 283–295. [PubMed: 25510471]
98. Yan W, Zhang Q, Chen B, Liang G-T, Li W-X, Zhou X-M and Liu D-Y, *Chinese Journal of Analytical Chemistry*, 2013, 41, 822–827.
99. Yamahashi Y, Cavnar PJ, Hind LE, Berthier E, Bennin DA, Beebe D and Huttenlocher A, *Biomedical Microdevices*, 2015, 17, 1–9. [PubMed: 25653054]
100. Kim JH, Park JY, Jin S, Yoon S, Kwak JY and Jeong YH, *Nanomaterials*, 2019, 9, 1–12.
101. Lei KF, Chang CH and Chen MJ, *ACS Applied Materials and Interfaces*, 2017, 9, 13092–13101. [PubMed: 28353331]
102. Truong AS, Lochbaum CA, Boyce MW and Lockett MR, *Analytical Chemistry*, 2015, 87, 11263–11270. [PubMed: 26507077]
103. LaBonia GJ, Lockwood SY, Heller AA, Spence DM and Hummon AB, *Proteomics*, 2016, 16, 1814–1821. [PubMed: 27198560]
104. Nery EW and Kubota LT, *Analytical and Bioanalytical Chemistry*, 2013, 405, 7573–7595. [PubMed: 23604524]
105. Munshi AS, Chen C, Townsend AD and Martin RS, *Analytical Methods*, 2018, 10, 3364–3374. [PubMed: 30923580]

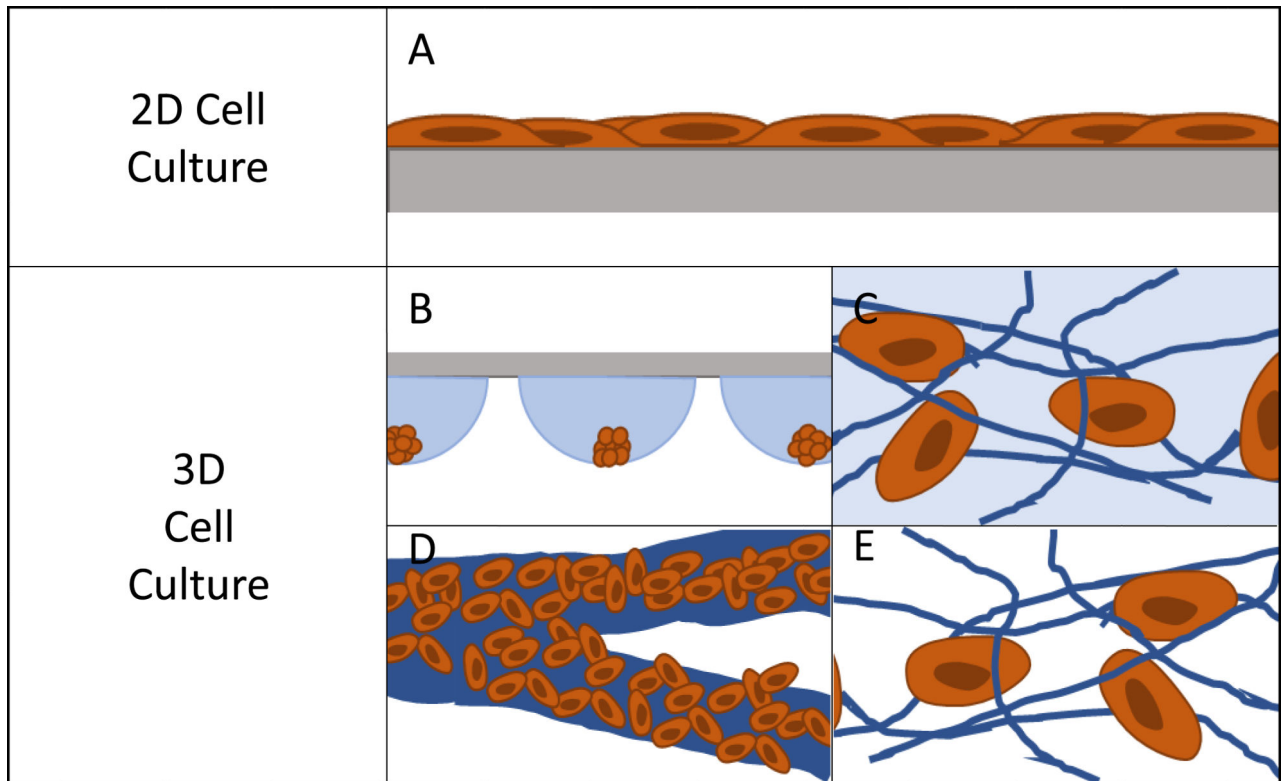


Figure 1:

Pictorial representation of cells on 2D and 3D substrates. (A) Represents how cells lay on a planar substrate, where cells are polarized on one side and media contacts half of the cell surface. (B) Hanging Drop Cell Culture cells grow in a cluster where only the outer layers of cells have good contact to the culture medium. (C) Hydrogel Cell Culture cells make discrete connections to hydrogel scaffold. The scaffold can be fibrous or more amorphous, with the scaffold being hydrated. (D) Paper based cell culture fibrous scaffold material where the fibers are typically much larger than the size of a cell. (E) Fiber based cell culture: Fibers can be tuned to sizes ranging from 10's of nanometers to 10's of microns.

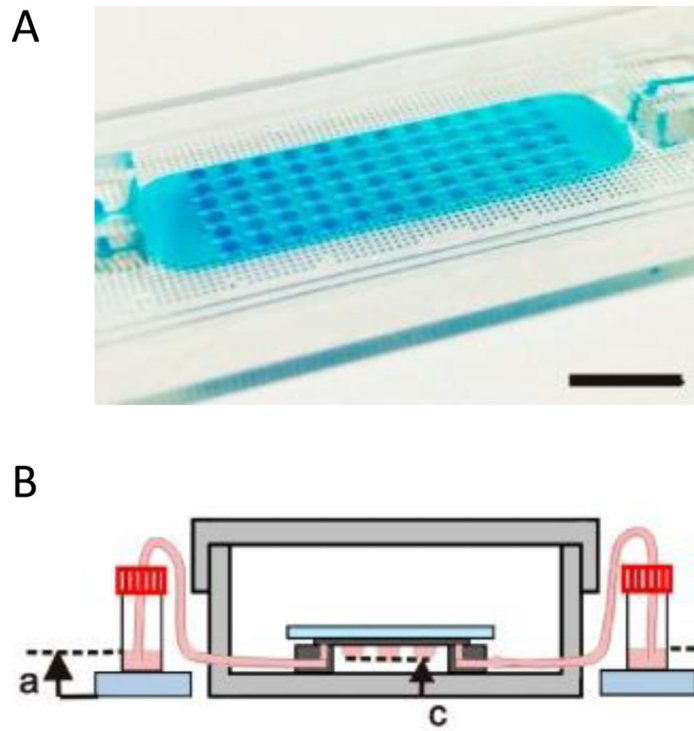


Figure 2: Microfluidic hanging drop cell culture chip. (A) Picture of a PDMS based microfluidic chip for hanging drop cell culture. Scale bar is 1 cm. (B) Illustration of the hanging drop microfluidic cell culture chip attached to reservoirs to supply fresh media to the cells. The chip is placed in a 10 cm dish containing PBS to minimize evaporation of the droplets. (Adapted from ref 49 with permission from MDPI)

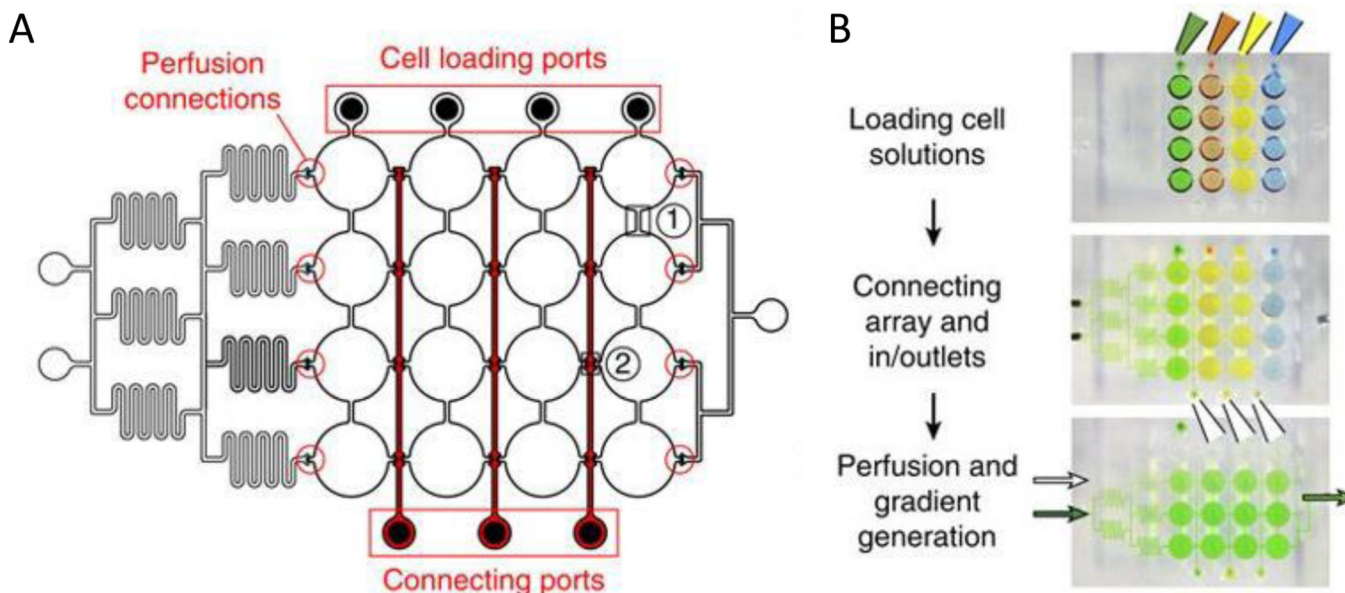


Figure 3: PDMS base hanging drop cell culture chip with valving. (A) Schematic representation of the PDMS based hanging drop cell culture chip. The chip has valves between each column allowing selective loading of cells down the channels. The valves can then be opened to allow flow from separate perfusion channels (B) Schematic showing how the chip is utilized. First cells are loaded from the top down the channels. The valves are opened and flow is initiated from the perfusion reservoirs (left to the right). Buffer can be mixed with a desired compound and diluted inline to the wells, allowing a concentration gradient to develop down the wells. (Adapted from ref 50 with permission from Springer Nature)

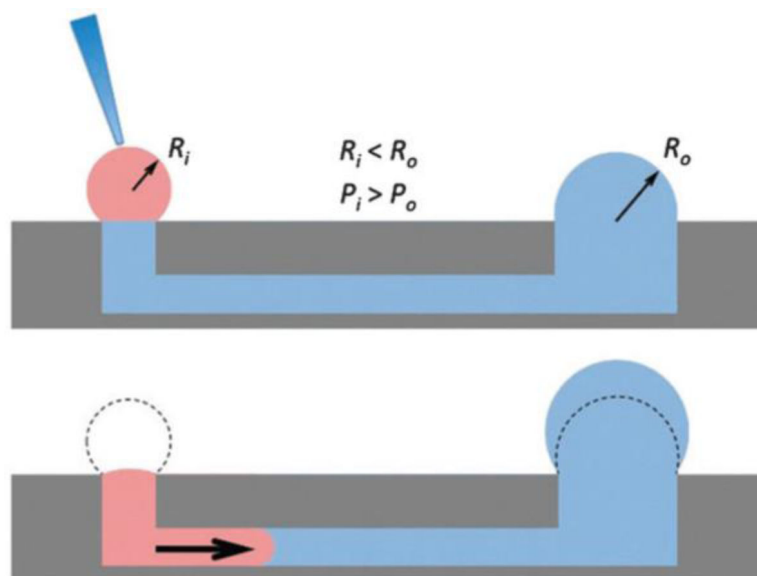


Figure 4: Diagram showing the mechanism of passive pumping. Passive pumping depends on the radius of each droplet. The pressure from a small droplet of radius R_i will be larger than the pressure from a large droplet of radius R_o based on Laplace's law. (Adapted from Ref 57 with permission from The Royal Society of Chemistry)

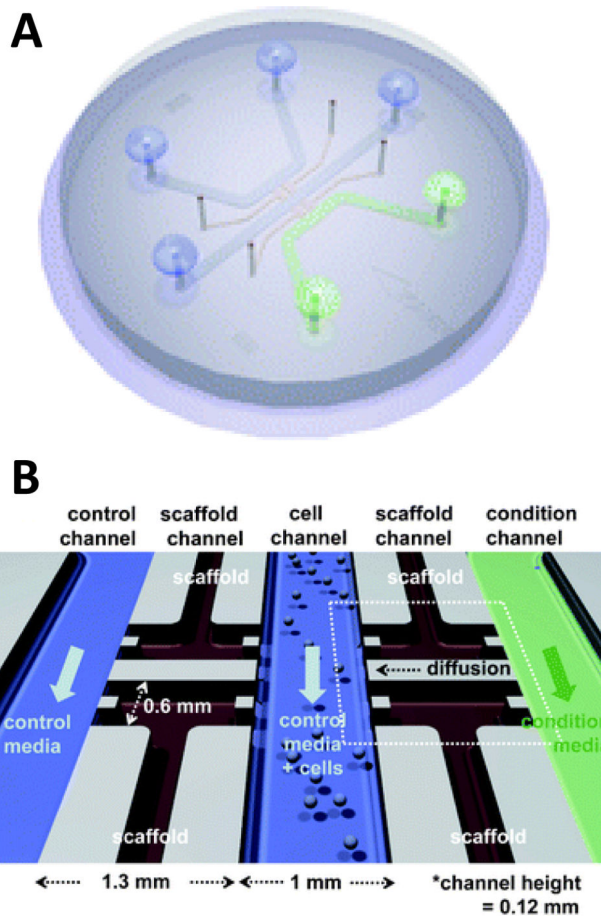


Figure 5: Microfluidic PDMS based platform for hydrogel based cell culture. (A) Completed chip with three distinct fluidic channels connected by hydrogel structures in between the channels. (B) Pictorial representation of the channel structure with flow channels in blue and green, and hydrogel structures in black. Cells are loaded in the center channel and cell migration is monitored in the gel structure based on stimulant in the side channels. (Adapted from Ref 60 with permission from the Royal Society of Chemistry)

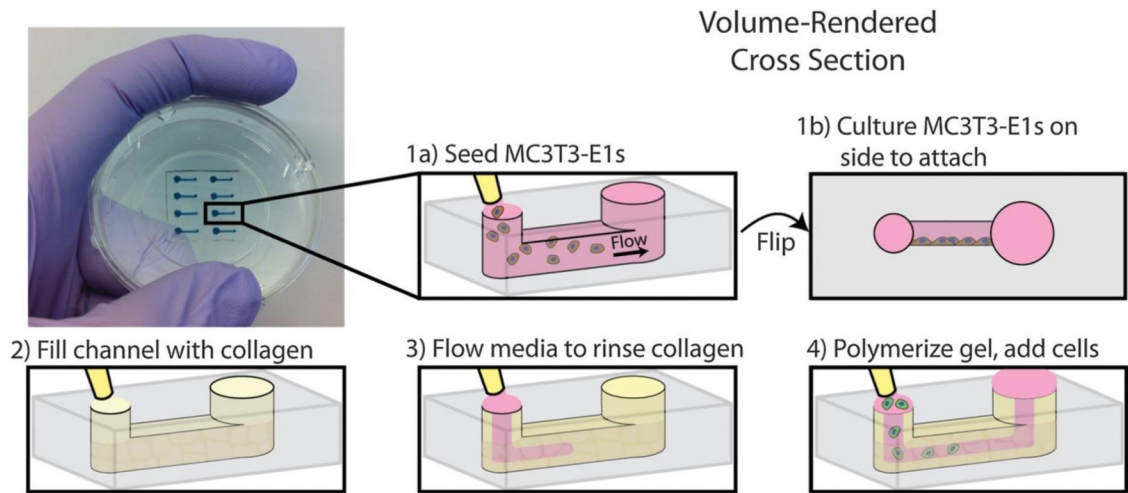


Figure 6:

PDMS-based microfluidic co-culture hydrogel platform. MC3T3-E1 cells are seeded in the channel and the device is flipped 90° such that the cells adhere to the sidewall of the channel. The channel is then filled with a collagen solution, after which the collagen solution is replaced by culture media leaving a thin layer of collagen on the walls. This collagen is polymerized into a hydrogel and prostate cancer cells are seeded in the channel. (Adapted from Ref 61 with permission from Oxford University Press)

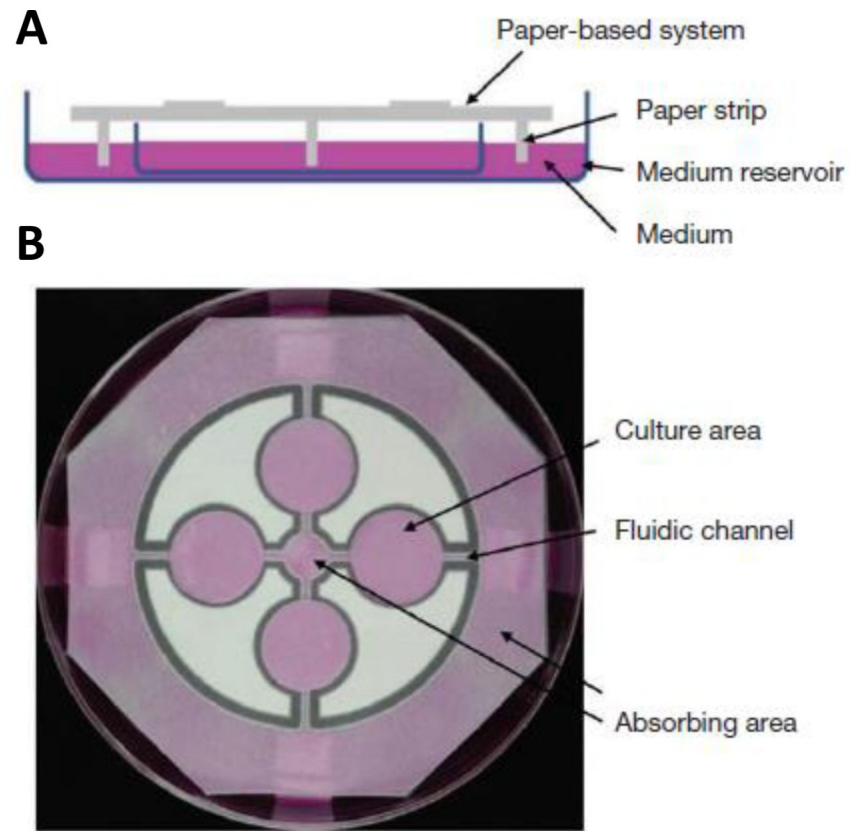


Figure 7: Paper-based microfluidic cell culture system. (A) The paper chip is suspended above a dish filled with medium. Strips of paper at the end of the chip allow connection to the medium reservoir. (B) Wax patterning defines 4 cell culture areas and channels to each cell culture area. (Adapted from Ref 74 with permission from Springer Nature)

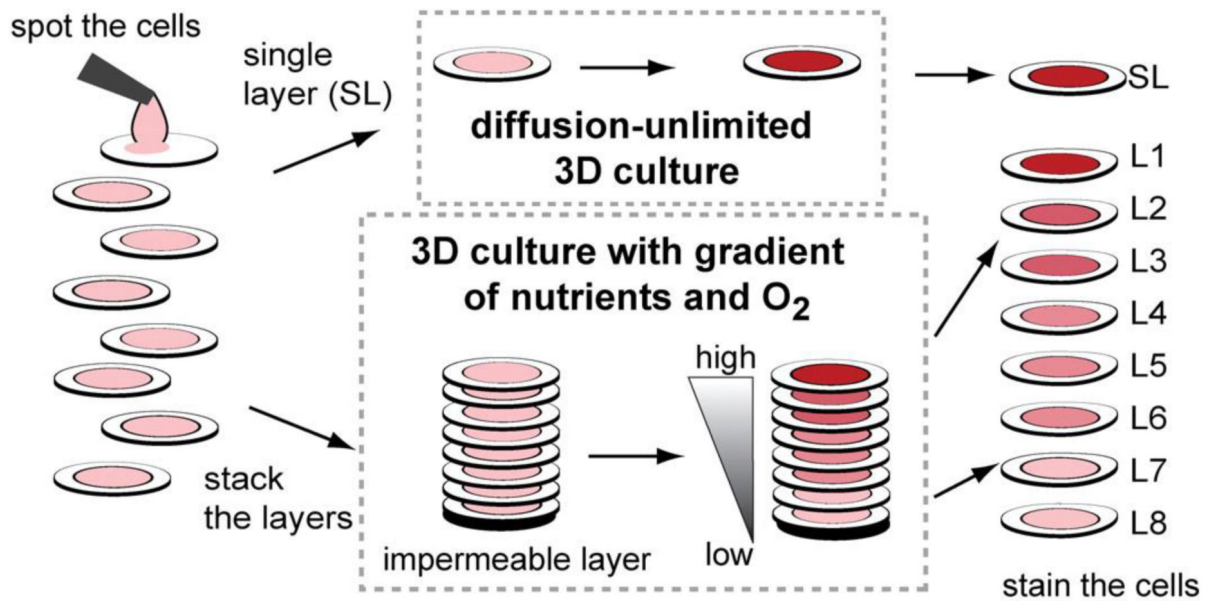


Figure 8: Stacked paper based 3D culture platform. Cells are spotted on paper (2–8 mm radius spots). The layers can then either be stacked to mimic a nutrient system (limited by diffusion) or left free to mimic a diffusion-unlimited 3D cell culture system. The stacked system can be disassembled for analysis. (Adapted from Ref 66 with permission from the Proceedings of the National Academy of Science)

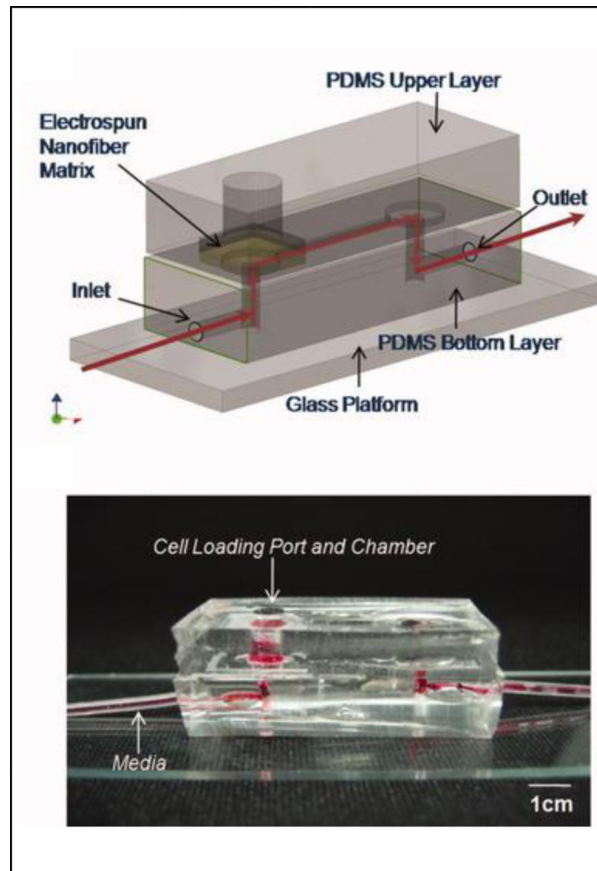


Figure 9: PDMS-based device for the incorporation of electrospun fiber scaffolds. (Top) Design representation of the chip. Red lines represent the path of fluid flow. (Bottom) Picture of the microchip with fibers and solution loaded into the cell loading port and the channel. (Adapted from ref 93 with permission from John Wiley and Sons)

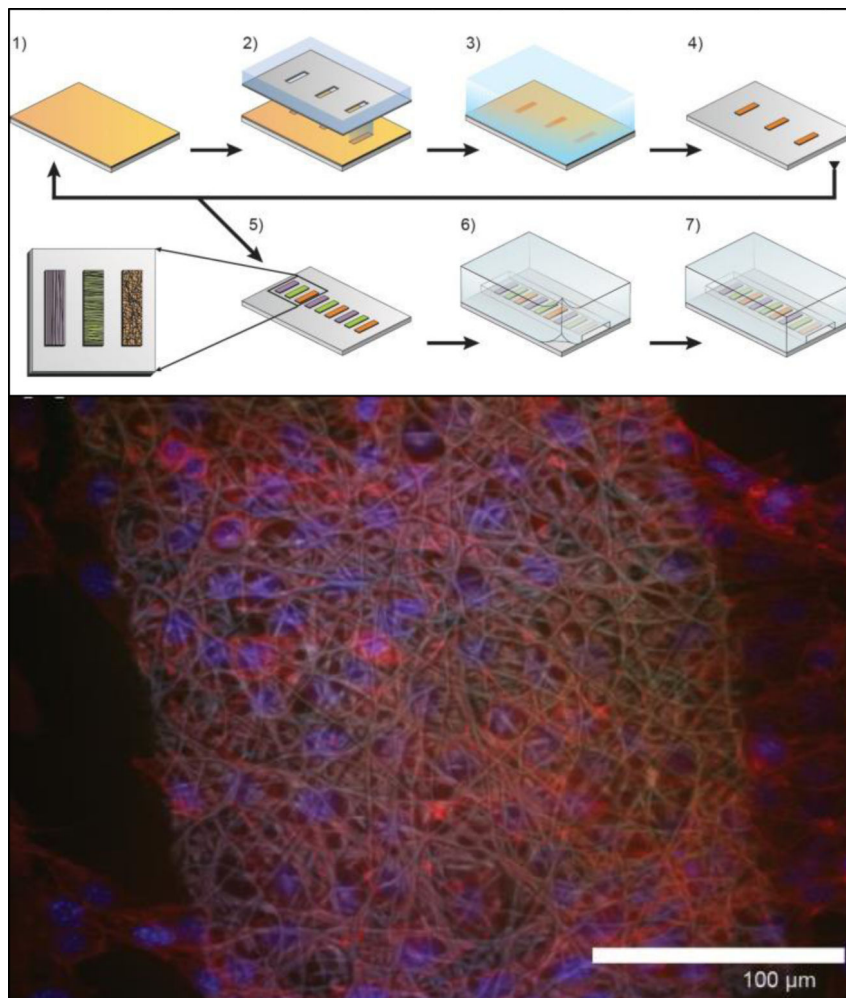


Figure 10: Method for incorporating multiple electrospun scaffolds into a microfluidic channel. (Top) 1: First fiber scaffold (polyurethane) is electrospun onto the substrate. 2: The substrate is covered with a mask and irradiated with deep ultraviolet light promoting crosslinking of the fibers. 3: The non-crosslinked fibers are dissolved away in THF followed by a deionized water rinse. 4: The substrate is dried. 5: Steps 1–4 are repeated for each additional fiber condition of interest. 6: A PDMS cover is aligned and sealed onto the glass substrate. 7: Completed device. (Bottom) False color fluorescence micrograph of 3T3 fibroblast cells culture in the microfluidic channel on the electrospun fibers. Blue-DNA are stained with DAP; red-actin filaments stained with Alexa Fluor555 phalloidin; Green is autofluorescence of the fibers. (Adapted from ref 94 with permission from AIP Publishing)

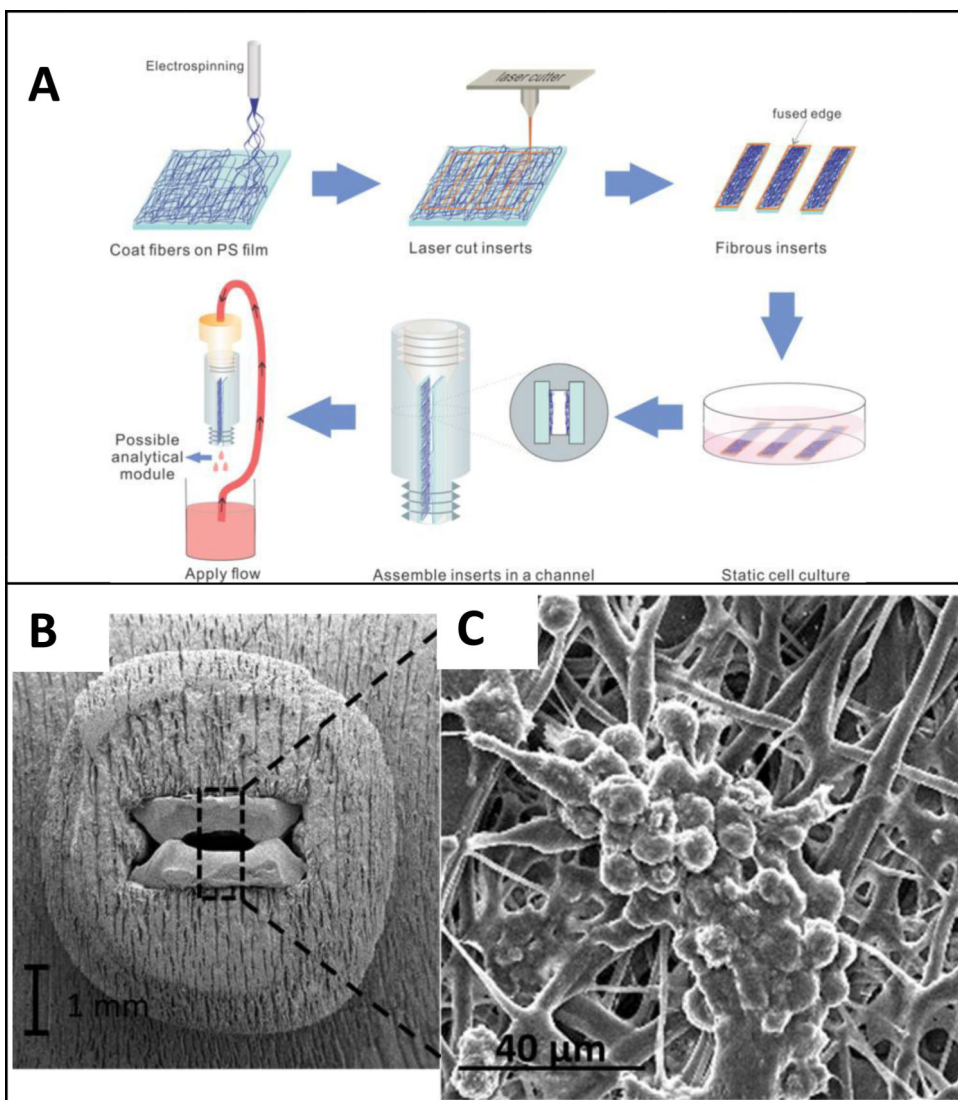


Figure 11: Insert-based fiber scaffold for microfluidic system. (A) Fibers are electrospun on a polystyrene film, followed by laser cutting of the insert to the desired dimensions. Cells can then be statically cultured on inserts, which can be placed into a 3D printed microfluidic device. The threaded connections allow for easy attachment to tubing, other cell culture modules, or analysis modules. (B). SEM of the polystyrene inserts places in a 3D printed cell culture module. (C) SEM of macrophage cells on a fibrous network (forming giant cell clusters). (Adapted from ref 24 with permission from Springer Nature)

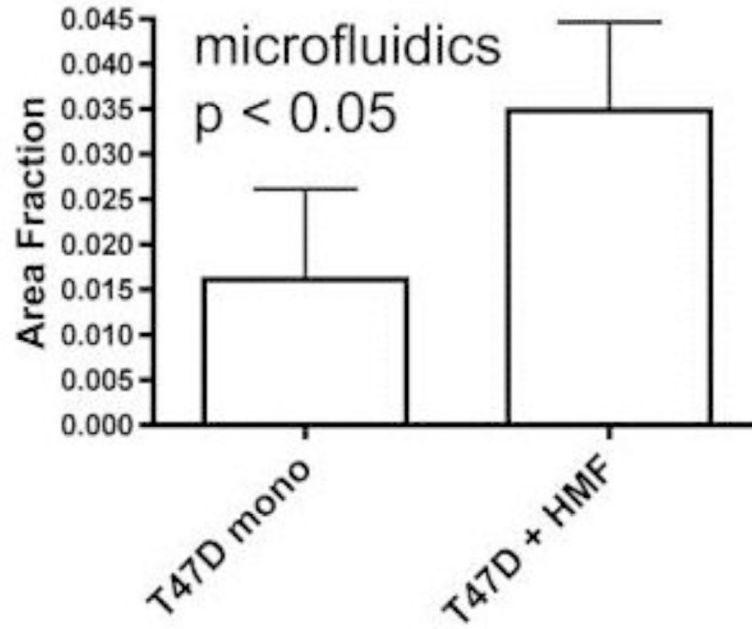


Figure 12:

Using fluorescence microscopy, the total area of tumor cell clusters were measured and compared under mono-culture and co-culture conditions. It was found that T47D cells co-cultured with HMF are bigger in size than monocultured cells. (Adapted from ref 58 with permission from Oxford University Press)

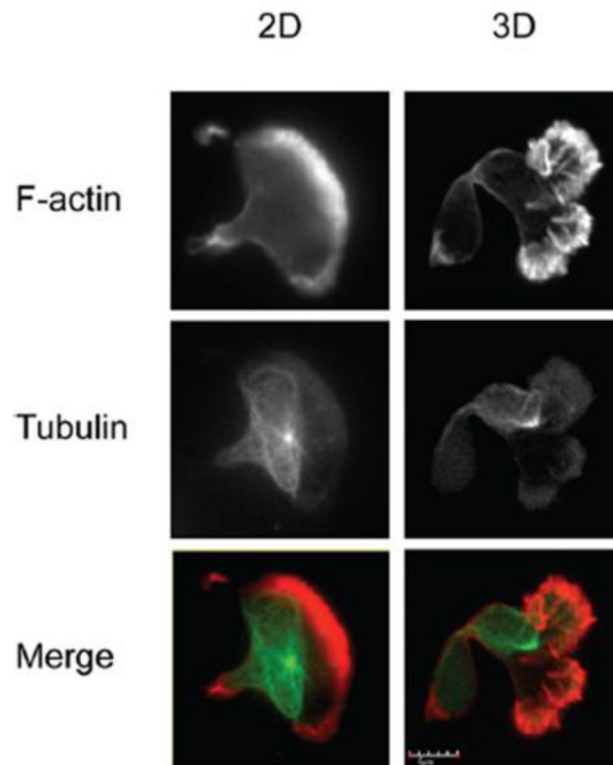


Figure 13:

Neutrophil polarization in 2D and 3D culture. Neutrophils were stained for F-actin (red) and tubulin (green) to determine the morphology of cells on a 2D fibrinogen coated channel vs a channel with a hydrogel. It was determined that the 2D substrate lead to a polarized morphology with a single broad leading edge, while the 3D hydrogel environment yielded multiple pseudo-pods. (Adapted from ref 99 with permission from Springer Nature)

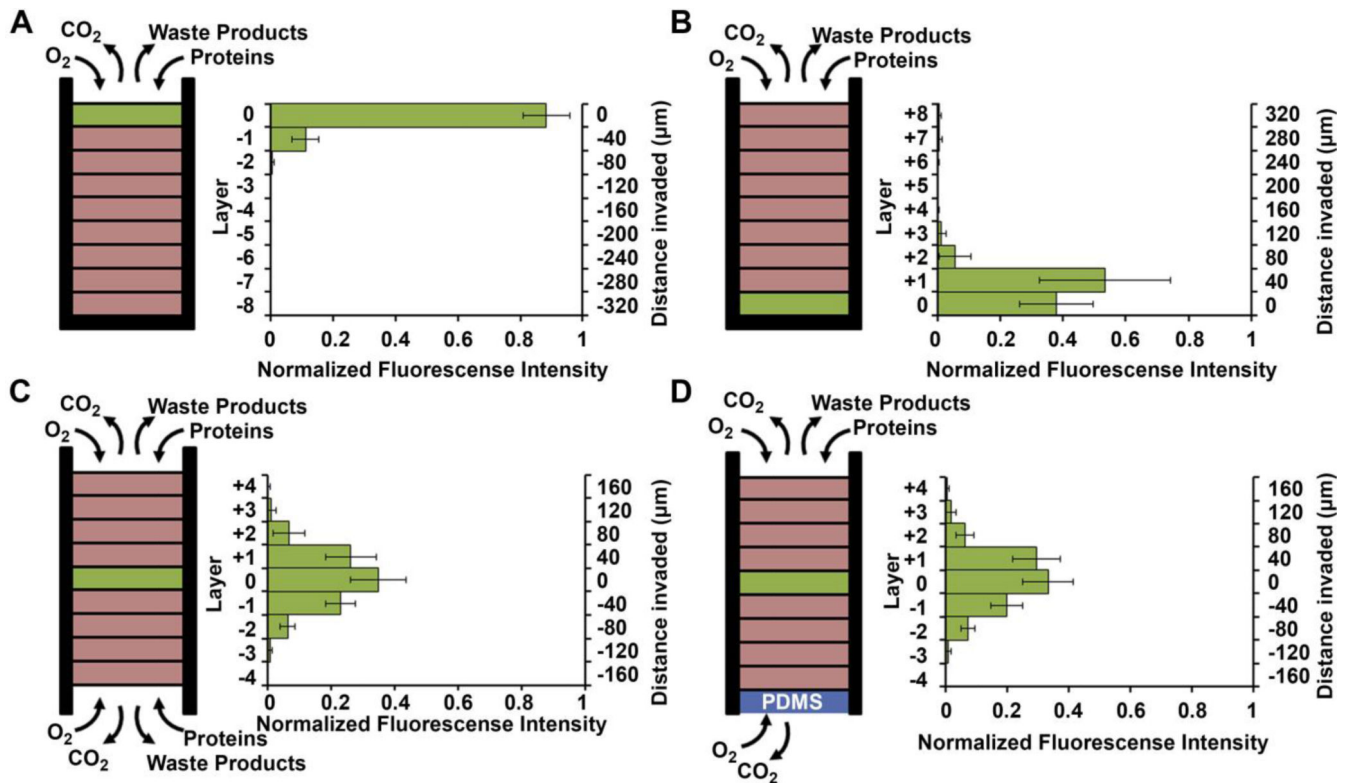


Figure 14:

Evidence of chemotaxis in a sub-population of A549-HGF-M cells (lung cancer cells). Cells were cultured and stacked similar to the system seen in Figure 8 except a hard plastic shell was placed around the stack to further limit the diffusion of nutrients and waste products. (A) Cells were positioned at the top of the stack close to the source of oxygen and little movement was seen. (B) cells were positioned at the bottom of the stack furthest away from the oxygen and a large amount of chemotaxis was seen. (C) Cell were positioned in the center of the stack and media was allowed to penetrate from both side of the stack. Symmetric movement was seen. (D) The cells were placed in the center of the stack once again but a PDMS gas permeable membrane was used to close off the bottom. Symmetric movement was again seen confirming that chemotaxis is a result of available oxygen. (Adapted from ref 77 with permission from Elsevier)

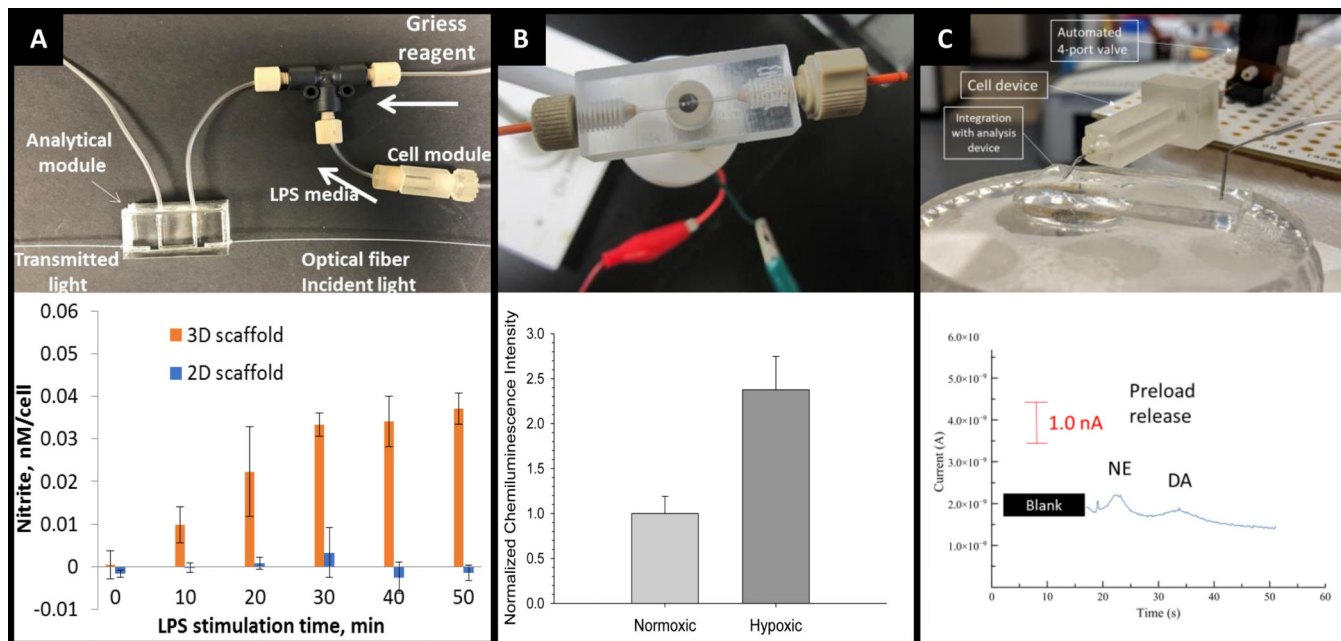


Figure 15:

3D printed devices as a mechanism for cell culture and analysis. (A) A 3D printed cell culture module with fiber scaffold inserts is connected to a PDMS-based optical flow cell. Using this set up nitrate from macrophages was quantified. It was determined that macrophages on 3D scaffolds better mimic the *in vivo* M1 state. (Adapted from Ref 24 with permission from Springer Nature) (B) A 3D printed electrochemical flow cell with threaded inlet and outlet for easy capillary connections. Using these threaded electrodes the researchers were able to confirm normoxic or hypoxic conditions in flowing red blood cells while simultaneously measuring ATP release with the luciferin/ luciferase assay. (Adapted from ref 39 with permission from The Royal Society of Chemistry) (C) A 3D printed cell culture module is interfaced with PDMS chip by flow matching the solution being pushed through the cell culture module and the fluid being pulled through the PDMS chip. Using this technique, a 3D printed cell culture module could be coupled with a PDMS-based electrophoresis chip with electrochemical detection to separate and quantify norepinephrine and dopamine release from PC12 cells. (Adapted from ref 41 with permission from The Royal Society of Chemistry)