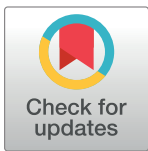


CORRECTION

Correction: Acute kidney injury – A frequent and serious complication after primary percutaneous coronary intervention in patients with ST-segment elevation myocardial infarction

Abdellatif El-Ahmadi, Mujahed Sebastian Abassi, Hedvig Bille Andersson, Thomas Engstrøm, Peter Clemmensen, Steffen Helqvist, Erik Jørgensen, Henning Kelbæk, Frants Pedersen, Kari Saunamäki, Jacob Lønborg, Lene Holmvang

In Fig 1, the y-axis label is incorrect. The Fig 1 caption is also incorrect. Please see the correct Fig 1 and correct caption here.



OPEN ACCESS

Citation: El-Ahmadi A, Abassi MS, Andersson HB, Engstrøm T, Clemmensen P, Helqvist S, et al. (2020) Correction: Acute kidney injury – A frequent and serious complication after primary percutaneous coronary intervention in patients with ST-segment elevation myocardial infarction. PLoS ONE 15(2): e0229346. <https://doi.org/10.1371/journal.pone.0229346>

Published: February 12, 2020

Copyright: © 2020 El-Ahmadi et al. This is an open access article distributed under the terms of the [Creative Commons Attribution License](https://creativecommons.org/licenses/by/4.0/), which permits unrestricted use, distribution, and reproduction in any medium, provided the original author and source are credited.

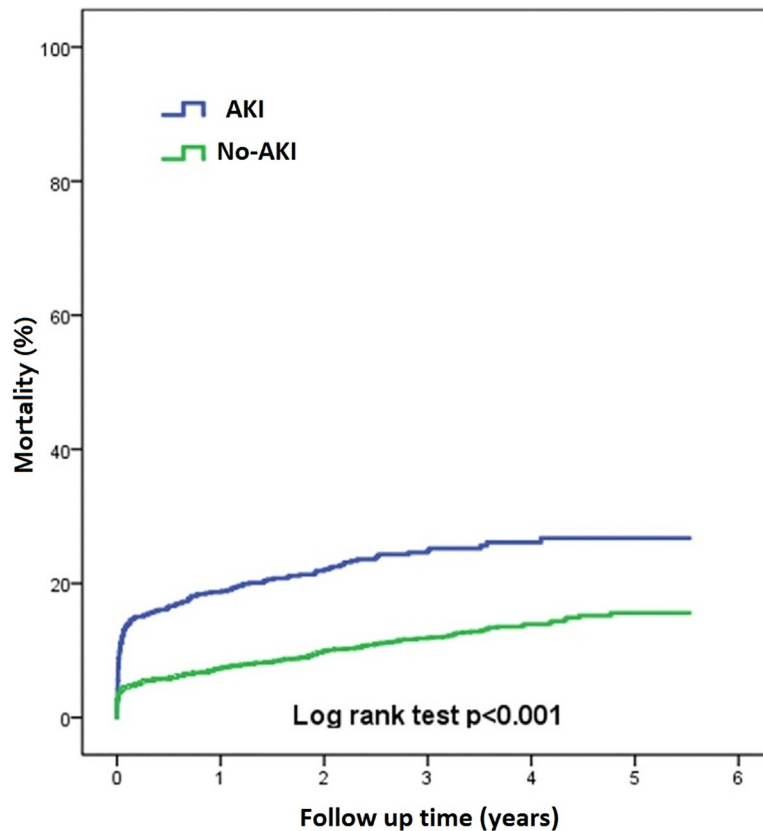


Fig 1. Mortality.

<https://doi.org/10.1371/journal.pone.0229346.g001>

Reference

1. El-Ahmadi A, Abassi MS, Andersson HB, Engstrøm T, Clemmensen P, Helqvist S, et al. (2019) Acute kidney injury—A frequent and serious complication after primary percutaneous coronary intervention in patients with ST-segment elevation myocardial infarction. *PLoS ONE* 14(12): e0226625. <https://doi.org/10.1371/journal.pone.0226625> PMID: 31860670