




# *Plasmodium vivax* Malaria Viewed through the Lens of an Eradicated European Strain

Lucy van Dorp <sup>\*,†,1</sup>, Pere Gelabert,<sup>†,2,3</sup> Adrien Rieux,<sup>4</sup> Marc de Manuel,<sup>2</sup> Toni de-Dios,<sup>2</sup> Shyam Gopalakrishnan,<sup>5</sup> Christian Carøe,<sup>5</sup> Marcela Sandoval-Velasco,<sup>5</sup> Rosa Fregel,<sup>6,7</sup> Ñigo Olalde,<sup>8</sup> Raül Escosa,<sup>9</sup> Carles Aranda,<sup>10</sup> Silvie Huijben,<sup>11,12</sup> Ivo Mueller,<sup>12,13,14</sup> Tomàs Marquès-Bonet,<sup>2,15,16,17</sup> François Balloux <sup>1</sup>, M. Thomas P. Gilbert,<sup>5,18</sup> and Carles Lalueza-Fox <sup>\*,2</sup>

<sup>1</sup>UCL Genetics Institute, University College London, London, United Kingdom

<sup>2</sup>Institute of Evolutionary Biology (CSIC-UPF), Barcelona, Spain

<sup>3</sup>Department of Evolutionary Anthropology, University of Vienna, Vienna, Austria

<sup>4</sup>CIRAD, UMR PVBMT, St. Pierre de la Réunion, France

<sup>5</sup>Section for Evolutionary Genomics, Faculty of Health and Medical Sciences, The GLOBE Institute, University of Copenhagen, Copenhagen, Denmark

<sup>6</sup>Department of Genetics, Stanford University, Stanford, CA

<sup>7</sup>Department of Biochemistry, Microbiology, Cell Biology and Genetics, Universidad de La Laguna, La Laguna, Spain

<sup>8</sup>Department of Genetics, Harvard Medical School, Boston, MA

<sup>9</sup>Consorci de Polítiques Ambientals de les Terres de l'Ebre (COPATE), Deltebre, Spain

<sup>10</sup>Servei de Control de Mosquits, Consell Comarcal del Baix Llobregat, Sant Feliu de Llobregat, Spain

<sup>11</sup>School of Life Sciences, Center for Evolution and Medicine, Arizona State University, Tempe, AZ

<sup>12</sup>ISGlobal, Barcelona Institute for Global Health, Hospital Clínic-Universitat de Barcelona, Barcelona, Spain

<sup>13</sup>Population Health and Immunity Division, Walter & Eliza Hall Institute, Parkville, VIC, Australia

<sup>14</sup>Department of Medical Biology, University of Melbourne, Parkville, VIC, Australia

<sup>15</sup>Catalan Institution of Research and Advanced Studies (ICREA), Barcelona, Spain

<sup>16</sup>CNAG-CRG, Barcelona Institute of Science and Technology, Centre for Genomic Regulation (CRG), Barcelona, Spain

<sup>17</sup>Institut Català de Paleontologia Miquel Crusafont, Universitat Autònoma de Barcelona, Cerdanyola del Vallès, Barcelona, Spain

<sup>18</sup>University Museum, Norwegian University of Science and Technology (NTNU), Trondheim, Norway

<sup>†</sup>These authors contributed equally to this work.

\*Corresponding authors: E-mails: lucy.dorp.12@ucl.ac.uk; carles.lalueza@upf.edu.

Associate editor: Beth Shapiro

## Abstract

The protozoan *Plasmodium vivax* is responsible for 42% of all cases of malaria outside Africa. The parasite is currently largely restricted to tropical and subtropical latitudes in Asia, Oceania, and the Americas. Though, it was historically present in most of Europe before being finally eradicated during the second half of the 20th century. The lack of genomic information on the extinct European lineage has prevented a clear understanding of historical population structuring and past migrations of *P. vivax*. We used medical microscope slides prepared in 1944 from malaria-affected patients from the Ebro Delta in Spain, one of the last footholds of malaria in Europe, to generate a genome of a European *P. vivax* strain. Population genetics and phylogenetic analyses placed this strain basal to a cluster including samples from the Americas. This genome allowed us to calibrate a genomic mutation rate for *P. vivax*, and to estimate the mean age of the last common ancestor between European and American strains to the 15th century. This date points to an introduction of the parasite during the European colonization of the Americas. In addition, we found that some known variants for resistance to antimalarial drugs, including Chloroquine and Sulfadoxine, were already present in this European strain, predating their use. Our results shed light on the evolution of an important human pathogen and illustrate the value of antique medical collections as a resource for retrieving genomic information on pathogens from the past.

**Key words:** malaria, *Plasmodium vivax*, phylogenetics, ancient DNA, population genetics.

## Introduction

Malaria is a leading cause of infectious disease, responsible for an estimated 200 million infections annually, and around 429 000 fatal cases (World Health Organisation 2017). The disease is caused by several species of parasitic protozoans from the genus *Plasmodium*, which are transmitted by various species of mosquitoes from the genus *Anopheles*. Two species in particular—*Plasmodium falciparum* and *Plasmodium vivax*—are responsible for the majority of human infections worldwide. Although *P. falciparum* causes 99% of malaria deaths globally, *P. vivax* is the etiological agent of 42% of all cases outside of Africa (Gething et al. 2011; World Health Organisation 2017).

Today, endemicity of the genus *Plasmodium* is restricted to tropical and subtropical latitudes, spanning large regions of East and South East Asia, sub-Saharan Africa, Central and South America, and Melanesia (Battle et al. 2012, 2019; Howes et al. 2016; Weiss et al. 2019). However, malaria was historically present in most of Europe, from the Mediterranean to the southern shores of the Baltic Sea, and from southern Britain to European Russia (Huldén et al. 2005). Malaria was eradicated from all European countries during the second half of the 20th century (Hay et al. 2004), with Spain being one of its last footholds from which it was only declared officially eradicated in 1964 (Pletsch 1965). Nevertheless, even though *Plasmodium* is currently largely absent from Europe, its potential re-emergence has been identified as a plausible consequence of climate change (Petersen et al. 2013; Zhao et al. 2016).

Whilst historically being described as the “benign” form of malaria, *P. vivax* is increasingly recognized as a significant cause of disease and mortality (Tijtra et al. 2008; Price et al. 2009; Lacerda et al. 2012; Baird 2013). In stark contrast to *P. falciparum*, *P. vivax* is capable of producing recurrent malaria episodes from a single infection due to its resistant latent forms known as hypnozoites (Gonzalez-Ceron et al. 2013; Adekunle et al. 2015). This capacity also allows *P. vivax* to maintain itself in temperate climates, resting in a dormant state in the cold months when anopheline populations are in diapause, and creating a persistent presence of parasite reservoirs which can facilitate widespread transmission and recurrent long-term infections (Krotoski 1985; Gething et al. 2011; White 2011). Low parasite densities of *P. vivax* in mixed infections (Mayxay et al. 2004; Moreira et al. 2015) and the suggested high proportion of hypnozoite-derived clinical incidence (Price et al. 2009; Howes et al. 2016) means the global prevalence of *P. vivax* is likely systematically underestimated in comparison with the better-studied *P. falciparum*.

*Plasmodium vivax* is widely considered to have emerged in sub-Saharan Africa, a region in which it is now at low prevalence (Liu et al. 2014; Gunalan et al. 2018; Twohig et al. 2019). From there, it is thought to have spread globally through a complex pattern of migration events by hitchhiking with its human host, as humans moved out of Africa (Culleton et al. 2011; Hupaloo et al. 2016). The analysis of a geographically diverse data set of 941 *P. vivax* mitochondrial DNA (mtDNA) genomes detected genetic links between strains

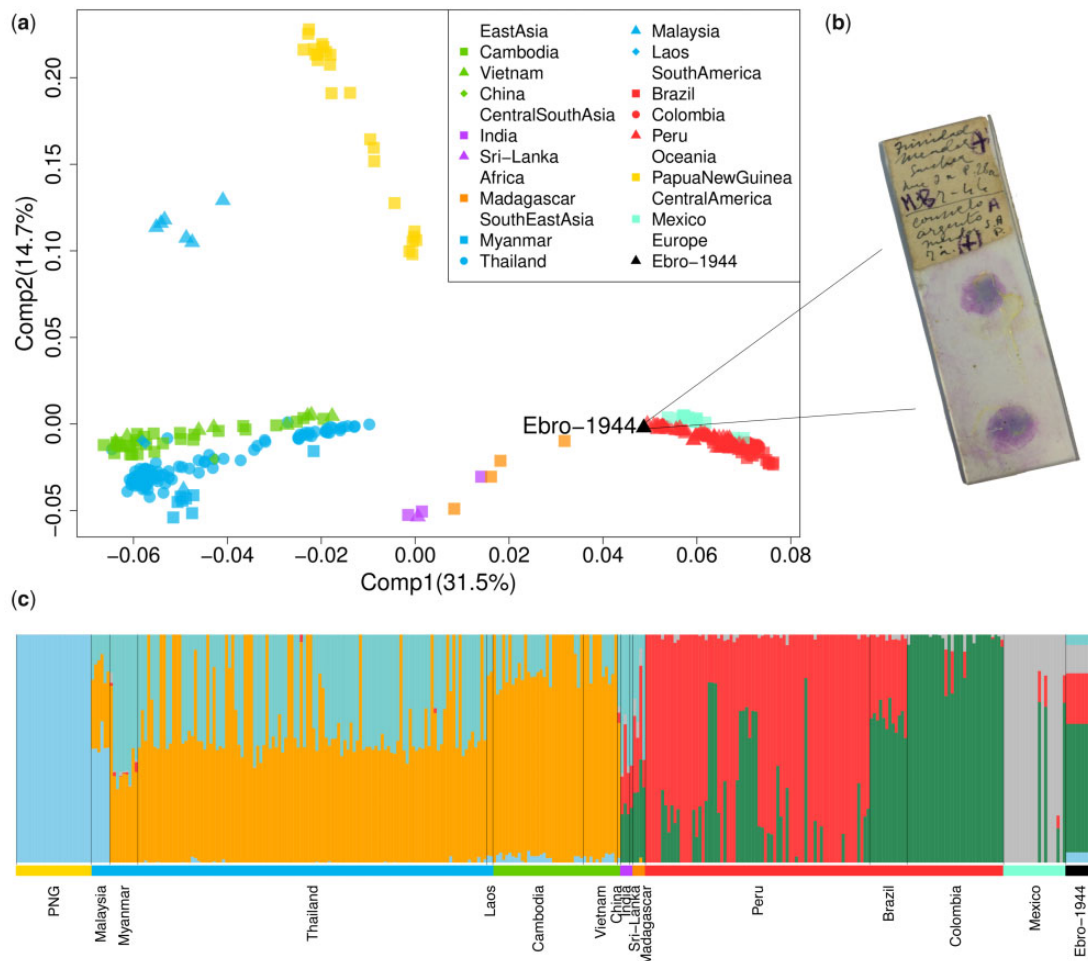
from the Americas to those from Africa and South Asia, although potential contributions from Melanesia into the Americas were also identified (Rodrigues et al. 2018). However, the role of the worldwide colonial expansion of European countries in the global dispersal of *P. vivax* remains largely unknown, mainly due to the lack of available sequenced nuclear genomes from now-extinct European strains.

The recent discovery of a set of historic microscope slides with bloodstains from malaria-affected patients provides major opportunities to shed light on the evolution of *P. vivax*. The slides were prepared between 1942 and 1944 in the Ebro Delta (Spain), an area where the disease was transmitted by the mosquito species *Anopheles atroparvus*, a member of the *Anopheles maculipennis* complex—still very common in the region—and provided the first retrieval of genetic material from historical European *P. vivax* (Gelabert et al. 2016) as well as a partial *P. falciparum* genome (de-Dios et al. 2019). The complete mtDNA genome of this sample showed a close genetic affinity to the most common strains of present-day South and Central America, suggesting their introduction into the Americas was linked to Spanish colonial-driven transmission of European strains. However, mtDNA is a maternally inherited single locus and, in comparison with the entire genome, has limited power to reconstruct complex evolutionary histories.

In this paper, we extend these previous findings, by reporting the complete genome of an extinct European *P. vivax* obtained from the historical Ebro Delta microscope slides. Together with the recent publication of a more accurately annotated *P. vivax* reference genome (PvP01) (Auburn et al. 2016), this European genome provides new opportunities to resolve the historical dispersals of this parasite using genome-wide data. The availability of this complete genome also allows direct estimation of an evolutionary rate for *P. vivax*, making it possible to date the clustering of the historic European strain with modern global strains. Furthermore, it enables us to ascertain the presence of some resistance alleles prior to the introduction of most anti-malaria drugs. This information is critical for further investigations into the evolution of the parasite, as well as predicting future emergences of drug-resistance mutations.

## Results

We generated shotgun Illumina sequence data from four archival blood slides derived from malaria patients sampled between 1942 and 1944 in Spain's Ebro Delta. The majority of reads that mapped to *P. vivax* (89.09%) derived from a single slide dated to 1944. In total, 481,245 DNA reads (0.44% of the total reads generated) mapped to *P. vivax*, yielding a composite genome, we term Ebro-1944, at 1.4× coverage (1.28× deriving from the newly analyzed 2017 slide), and spanning 66.42% of the (PvP01) reference. The mtDNA genome was recovered at 32× coverage (supplementary figs. 1–5 and tables 1–3, Supplementary Material online). Although working with low coverage ancient genomes is challenging, the fact that our genome is haploid and displays low levels of



**FIG. 1.** (a) PCA of the historic Ebro-1944 sample together with a geographically diverse set of modern *Plasmodium vivax* strains. (b) Example microscopy slide stained with the blood of patient's infected with malaria from the Ebro Delta, Spain, in the 1940s. (c) Unsupervised ADMIXTURE clustering analysis at  $K = 6$ . Samples are arranged by geographic region and colored as in (a).

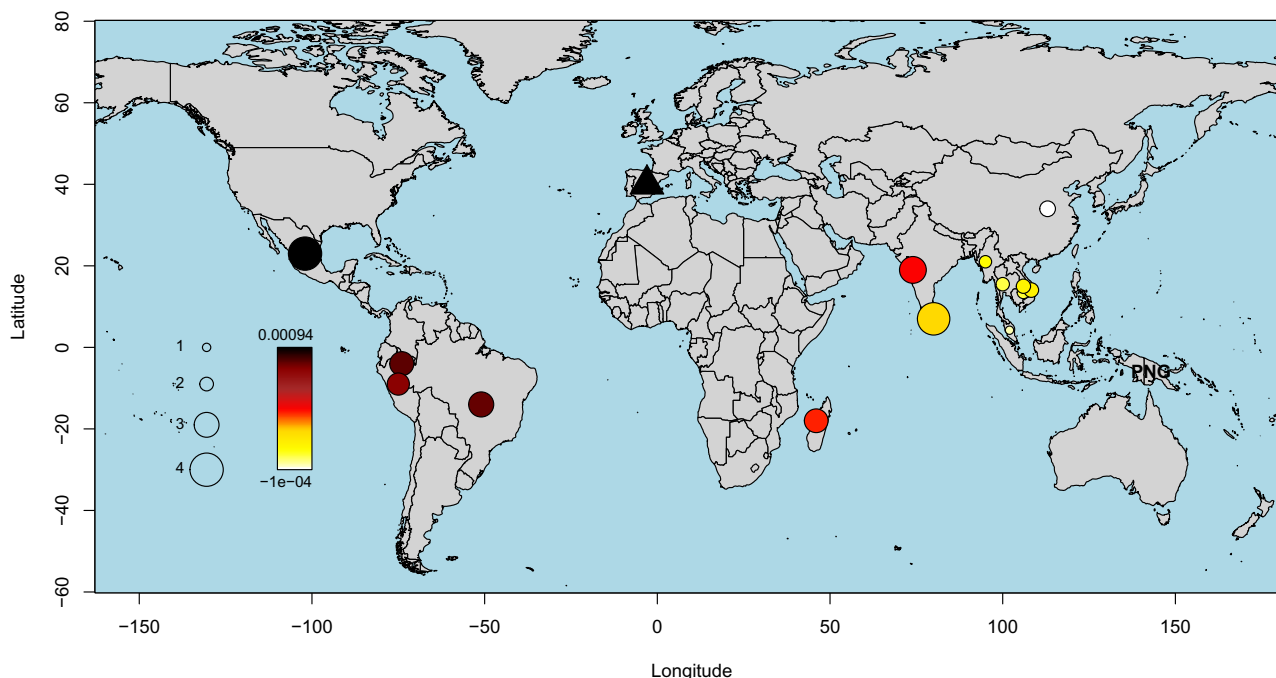
postmortem sequencing errors suggests it can be reliably used in most evolutionary analyses.

To explore the phylogeographic affinities of the eradicated European strain we performed several population genomics analyses (supplementary figs. 6–12 and table 4, Supplementary Material online). A principal component analysis (PCA) applied to a global data set of *P. vivax* showed strong geographic structure, with clusters separating 1) South East Asian/East Asian strains; 2) Oceanian strains (those from Malaysia were placed between the two clusters); 3) Indian and Madagascan strains; and 4) those sampled from Central/South America (fig. 1a and b). The European sample (labeled Ebro-1944) falls at one end of the latter cluster, on an axis of variation shared by strains from Mexico, Brazil, Colombia, and Peru.

Model-based clustering implemented in an unsupervised ADMIXTURE analysis (fig. 1c and supplementary fig. 8, Supplementary Material online) provided qualitatively consistent inferences to those observed by PCA, with one ancestry component maximized in Oceanian samples, two largely shared by East and South East Asian samples, and three further components which largely differentiate samples from South and Central America. The ancestry of Ebro-1944 is

mostly modeled by the three components identified in samples from South America (~56% Colombia-like and ~22% Peru-like) and Central America (~12% Mexico-like), although a minor proportion of ancestry is shared with both South East Asian (~5%) and Oceanian (~5%) samples.

To formally test these suggested relationships, we calculated  $f_4$  statistics (Patterson et al. 2012) of the form (*Plasmodium cynomolgi*, Ebro-1944; X, Y), where X and Y are tested for all combinations of samples from 15 worldwide locations (fig. 2). *Plasmodium cynomolgi* was selected as an outgroup as it represents the closest nonhuman infecting *Plasmodium* species (Tachibana et al. 2012). This statistic is designed to quantify the covariance in allele frequency differences between *P. cynomolgi* and Ebro-1944 relative to *P. vivax* from sampled worldwide locations (X and Y), with a more positive  $f_4$  value indicating a closer relationship of Ebro-1944 to samples from Y relative to X. Using this framework and testing all possible topological relationships, Ebro-1944 was found to share significantly more derived alleles with Central and Southern American strains compared with those sampled from South East and East Asia (fig. 2 and supplementary fig. 9, Supplementary Material online). These results collectively support the presence of a cline of ancestry stretching



**Fig. 2.**  $f_4$ -Values inferred under the test relationship (*Plasmodium cynomolgi*, Ebro-1944; Papua New Guinea [PNG], Y), where Y iterates through the geographic sampling locations of our included strains. The color scale provides the value of the  $f_4$  statistic with the significance (absolute z score), assessed through block jackknife resampling, provided by the circle size. A more positive  $f_4$  value indicates a closer relationship of Ebro-1944 to Y relative to PNG.

from Europe to the Americas, with our eradicated European strain showing strong phylogenetic affinity to modern *P. vivax* samples from Mexico, Brazil, and Peru.

Additional evidence was also obtained using an unrelated method designed to cluster global samples based on inferred patterns of haplotype sharing (Lawson et al. 2012). Considering haplotype variation rather than allele frequency differences increases power to resolve fine-scale genetic structure (Leslie et al. 2015) and is robust to potential single nucleotide polymorphism (SNP) calling errors (Conrad et al. 2006). Haplotype-based clustering grouped Ebro-1944 with samples from South and Central America (fig. 3a). This result was robust to the inclusion of different samples in the data set, to moderate imputation, and remained consistent when either uncorrelated sites or linked sites were considered (supplementary figs. 10–12, section 4, and methods, Supplementary Material online).

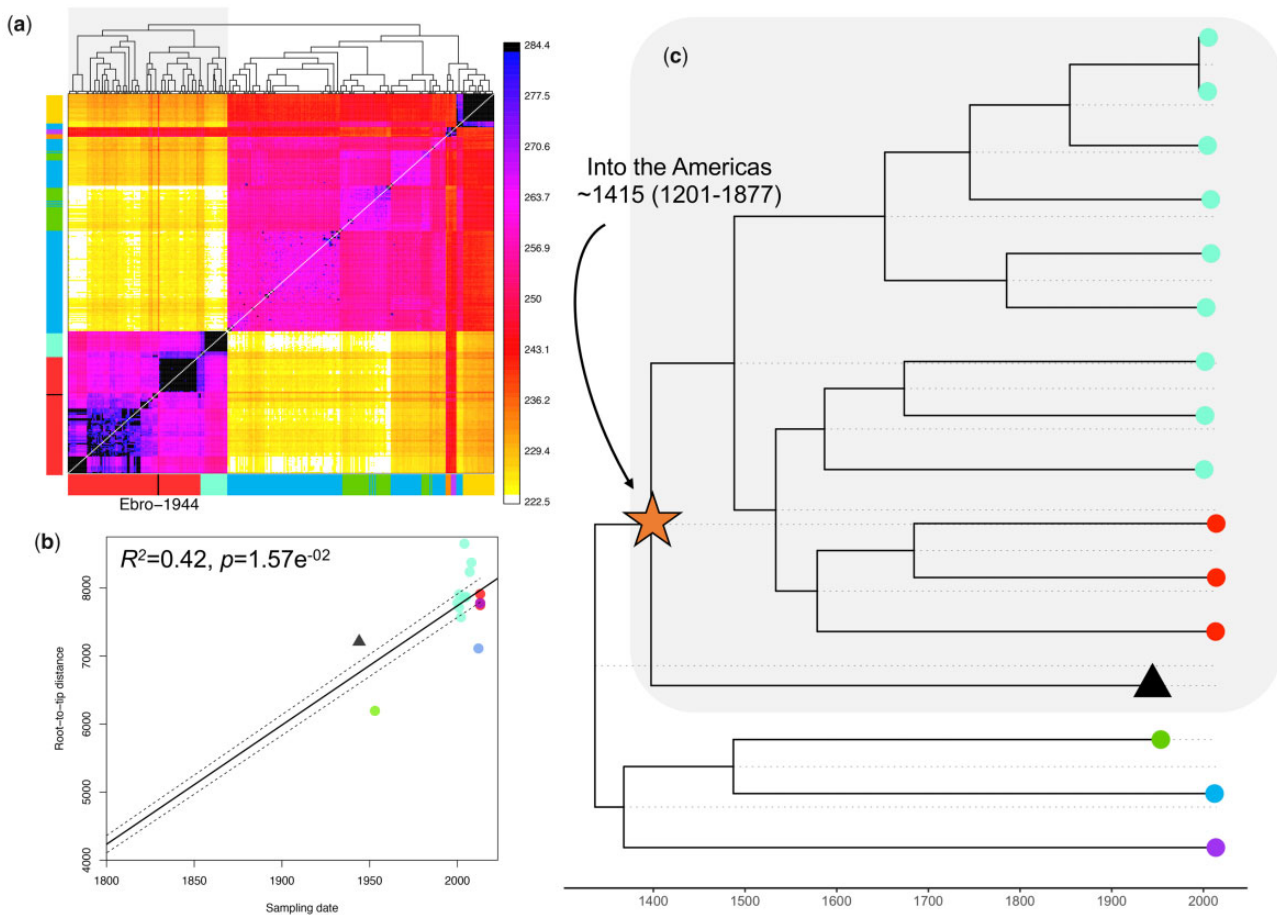
Given the strong phylogeographic affinity of Ebro-1944 to *P. vivax* currently in circulation in the Americas, we tested whether the divergence of Ebro-1944 from American strains is better explained by a deep split, for example at the time of the original human settlement of the Americas at least 15,000 years ago, or is more consistent with a recent introduction to the Americas. Genomes obtained from historical or ancient materials provide unique opportunities to calibrate phylogenetic trees, by directly associating sampling dates with the sequences representing the phylogeny tips (terminal nodes). These in turn enable inference of divergence times and mutation rates without the need for any other age-related external data (Rieux and Balloux 2016). Therefore, to infer the temporal relationship of Ebro-1944 to strains from the

Americas, we included our historic sample together with 15 closely related publicly available genomes sampled over a range of time periods (supplementary table 5, Supplementary Material online). We selected strains predominantly from the Americas, with three additional genomes included from India, Myanmar, and North Korea to root the topology and increase the time span of our data set.

To account for the possible confounding effect of genetic recombination, we filtered the resulting alignment for a set of high confidence congruent SNPs. Specifically, we removed all homoplastic that is SNPs in the alignment in conflict with the maximum parsimony phylogeny (see Materials and Methods). This approach identifies, with no required prior knowledge, regions of the genome that are hypervariable, deriving from recombination or mixed infections, as well as filtering SNPs which may have been erroneously called due to low sequence quality or postmortem damage. The resulting alignment exhibited a significant positive correlation between the root-to-tip phylogenetic distances of a maximum likelihood phylogeny and the time of sampling, indicating the presence of detectable temporal accumulation of de novo mutations within the timescale of our data set (fig. 3b, supplementary fig. 13, Supplementary Material online).

Mutation rates were subsequently estimated using the Bayesian phylogenetic tool BEAST2 (Bouckaert et al. 2014) testing a range of demographic and clock rate priors. We estimated the mutation rate over the tested alignment to  $5.57E^{-7}$  substitution/site/year [HPD 95%  $2.75E^{-8}$ – $1.06E^{-6}$ ]. Though a broad estimate, we obtained low values ( $<0.15$ ) of the standard deviation of the uncorrelated log-normal relaxed clock (ucl.d.stdev), suggesting little variation in rates





**Fig. 3.** (a) CHROMOPAINTER's inferred counts of matching DNA genome wide that each of the 104 inferred clusters (columns) is painted by each of the 104 clusters (rows). The tree at top shows fineSTRUCTURE's inferred hierarchical merging of these 104 clusters and the colors on the axes give the continental region and population to which strains in each cluster are assigned. Ebro-1944 is depicted in black and clusters with the sample from Peru and Brazil. (b) Root-to-tip distances of our included *Plasmodium vivax* strains correlated with the date of isolation. The regression was significant following 1,000 random permutations of sampling date. (c) Tip-dated maximum clade credibility phylogenetic tree obtained with BEAST 2. The mean posterior probability for the time to the most recent common ancestor between the historical European strain and the American strains is indicated. Tips are colored as in [fig. 1a](#).

between branches. This approximation enabled us to infer that the historical Ebro-1944 genome shares a common ancestor with strains in the South-American cluster dating to the 13th–19th centuries (mean 1415; HPD 95% 1201–1877 CE) ([fig. 3c](#), [supplementary fig. 14](#) and [table 6](#), [Supplementary Material online](#)).

A number of mutations conferring resistance to antimalarial drug treatments developed in the later decades of the 20th century have been identified in *P. vivax*. For instance, mutations in the *pvdhfr* gene are known to be involved in resistance to pyrimethamine ([de Pecoulas et al. 1998](#); [Imwong et al. 2001, 2003](#); [Huang et al. 2014](#)) whilst mutations at the *pvdhps* gene confer resistance to sulfadoxine ([Korsinczky et al. 2004](#); [Menegon et al. 2006](#); [Hapuarachchi et al. 2009](#)). Other genes, including *pvmdr1* ([Brega et al. 2005](#); [Sá et al. 2005](#); [Barnadas, Tichit, et al. 2008](#)), *CRT* ([Suwanarusk et al. 2007](#)), or *pvmp1* ([Dharia et al. 2010](#)), are thought to be involved in chloroquine resistance. *Plasmodium vivax* populations also exhibit high genetic diversity in genes related to immune evasion

and host infectivity, including *MSP10*, *MSP7*, and *CLAG*. We annotated 4,800 SNPs in the Ebro-1944 genome ([supplementary table 7](#), [Supplementary Material online](#)). Of these, 1,195 are missense mutations, which represent 60.6% of the genic mutations. Similar ratios have been reported in other *P. vivax* strains ([Hupalo et al. 2016](#); [Pearson et al. 2016](#); [de Oliveira et al. 2017](#)).

Ebro-1944 carries the derived allele in three SNPs located in genes functionally associated with antimalarial drug resistance. Two of these, Val1478Ile and Thr259Arg ([Dharia et al. 2010](#); [de Oliveira et al. 2017](#)) are in the *pvmdr1* gene and another, Met205Ile ([Hapuarachchi et al. 2009](#)), occurs in the *pvdhps* gene ([supplementary tables 8 and 9](#), [Supplementary Material online](#)). We also identified a previously undescribed mutation (Leu623Arg) in *CLAG*, a gene associated with host infectivity ([Gupta et al. 2015](#)). In addition, we screened multiple loci ( $N = 516$ ) that have previously been reported to exhibit strong signals of recent natural selection in a geographically diverse set of modern *P. vivax* samples ([Hupalo et al. 2016](#)). Some of these regions

encompass genes previously known to be involved in anti-malarial drug resistance, including three with strong experimental validation of resistance phenotypes: *pvm*dr1, *dhfr*, and *dhfps* (Haldar et al. 2018). Our historical genome has 355 of these positions covered by at least two reads, of which Ebro-1944 exhibits the ancestral allele in 349 (supplementary table 10, Supplementary Material online). Therefore, only six of the 355 derived variants with high  $F_{ST}$  values (including the previously mentioned Met205Ile variant at *pvdhps* gene) were present in the historical European sample, suggesting a rapid accumulation of resistance conferring mutations in more recent strains.

## Discussion

Our genome-wide analyses of a historic European *P. vivax* nuclear genome confirm the inference, previously based solely on mtDNA, that extinct European *P. vivax* are closest genetically to strains currently in circulation in Central and South America (Gelabert et al. 2016). Historical accounts of the presence of tertian (*P. vivax*) malaria in Europe date to at least Classical Greece (De Zulueta 1973; Carter 2003), suggesting that the most parsimonious explanation is an introduction of *P. vivax* from Europe into the Americas and not the other way around. A migration event from Europe into the Americas is further supported by the European Ebro-1944 *P. vivax* strain falling as an out group to all the strains from the Americas (fig. 3c). Finally, the estimated mean age of divergence in the 15th century between Ebro-1944 and strains in circulation in the Americas (fig. 3c) is consistent with an introduction of *P. vivax* malaria into the Americas by European colonists.

Whether any agent of malaria was present in the Americas prior to European contact (1492) has been debated (Carter 2003; Hume 2003; de Castro and Singer 2005). It is relatively unlikely that any malarial parasites would have survived the journey across the Bering strait during the initial peopling of the Americas some 15,000 years ago (Waters et al. 2018) due to the absence of mosquito vectors at these high latitudes allowing the parasites to fulfill their life cycles (Tanabe et al. 2010). However, accounts of the therapeutic use by Incas of cinchona tree bark, from which quinine derives, have been interpreted as suggestive of malaria being present in the Americas pre-Columbian contact (Escardo 1992). Though, its use may have been motivated by the effectiveness of quinine in the treatment of other fever-causing illnesses.

Older split times between *P. vivax* lineages from the Americas and the rest of the world than the one we inferred based on whole-genome sequences have been suggested from the analysis of mtDNA genomes (Taylor et al. 2013; Rodrigues et al. 2018). Though, we note that, even when accounting for the posterior uncertainty around our inferred mutation rate, all possible temporal estimates place the split time between the European and American strains as incompatible with an introduction of *P. vivax* into the Americas alongside the first humans to colonize the continent. Our results are therefore highly supportive of an introduction of *P. vivax* to the Americas during the European colonial period,

with our range also consistent with the transatlantic slave trade between Africa and Spanish and Portuguese-run ports in Central and South America. Our analyses of the nuclear genome further point to a minor genetic component in American strains shared with strains from Madagascar, India, and Sri Lanka (figs. 1c and 3a). We interpret this as likely evidence for secondary genetic introgression into the American *P. vivax* population by lineages from different regions of the world, which would be consistent with the high *P. vivax* mtDNA diversity previously described in the Americas (Taylor et al. 2013; Hupalo et al. 2016; de Oliveira et al. 2017; Rodrigues et al. 2018).

In this work, we restricted the phylogenetic dating to the migration of *P. vivax* into the Americas. There is currently no consensus over the age of the most recent common ancestor of all extant, worldwide *P. vivax* strains. Some previous estimates inferred the origin of *P. vivax* to around 5,000 or 10,000 years ago (Carter 2003; Leclerc et al. 2004; Lim et al. 2005), whereas far older dates have been proposed, including 45,000–81,000 years (Escalante et al. 2005) or even 53,000–265,000 years (Mu et al. 2005). An extrapolation of our inferred evolutionary rates to the global diversity of extant *P. vivax* strains would point to a recent origin for the parasite. Though, formally estimating the age of *P. vivax* through a phylogenetic “tip-dating” approach poses a series of analytical challenges. For example, the homoplasmy screening method we employed to exclude homoplasmy caused by mixed infections and likely genetic recombination is currently not computationally tractable for a data set comprising a large number of globally sourced whole *P. vivax* genomes. Possible solutions to this problem may arise through optimization of sequencing protocols to generate higher quality Plasmodium whole-genome sequences together with the development of downstream bioinformatics approaches designed to propagate genotype calling uncertainty and deconvolve mixed infections (Zhu et al. 2018). This should be aided by the generation of further high-quality reference genomes across the Plasmodium genus, for example using long-read sequencing technology (Auburn et al. 2016; Pasini et al. 2017; Gilabert et al. 2018; Otto et al. 2018).

Reconstruction of the phylogeographic relationships between *P. vivax* strains is complicated further by mounting evidence for the zoonotic potential of *P. vivax* and *P. vivax-like* strains; with host-jumps likely having occurred several times in the parasite’s evolutionary history (Prugnolle et al. 2013; Liu et al. 2014, 2017; Loy et al. 2017). The discovery of the platyrrhine protozoa, *Plasmodium simium*, as morphologically (Ott 1967) and genetically (Leclerc et al. 2004; Escalante et al. 2005; Lim et al. 2005) indistinguishable from *P. vivax* suggests very recent host transfers between South American monkeys and humans; in some cases responsible for the incidence of zoonotic malarial disease (Brasil et al. 2017; Buery et al. 2017). This raises important questions as to what should be considered as the host-range of *P. vivax* and queries what species delineation should be applied in comparative genomics studies. Recurrent host jumps of *P. vivax* lineages into humans from animal reservoirs, with subsequent demographic expansions and possible lineage replacements, may

point to a recent age for the ancestor of all extant *P. vivax* strains, despite now-extinct lineages of the parasite having likely plagued humans for far longer.

Malaria is widely believed to have exerted one of the strongest selective forces on the human genome (Hedrick 2012). Well-known examples of selection against malaria include protective mutations at the *HBB* gene that give rise to resistant isoforms of proteins such as HbS and HbE in African and Asian populations, respectively, and mutations at the *G6PD* gene which are broadly spread in African populations and are also present in the Mediterranean (Tishkoff et al. 2001; Kwiatkowski 2005; Howes et al. 2012). One of the best-known examples of directional selection is the FY\*0 Duffy blood negative genotype that confers resistance to *P. vivax* which is close to fixation in sub-Saharan Africa but essentially absent in other regions of the world. The protein is the key invasion receptor for the human malarial parasites *P. vivax*, *Plasmodium knowlesi*, and the simian malarial parasite *P. cynomolgi* (Kosaisavee et al. 2017). Exposure to an ancestor of *P. vivax* may have led to the sweep of the FY\*0 allele in sub-Saharan Africa some 40,000 years ago and may represent the fastest known selective sweep for any human gene (McManus et al. 2017).

Though, given the relatively mild clinical symptoms of modern *P. vivax*, it is not inconceivable that the selective forces that led to the fixation of the FY\*0 allele in sub-Saharan Africa may have been caused by another malaria parasite. A further complicating factor stems from increasing evidence accumulating for previously unrecognized endemic *P. vivax* circulating in human populations from sub-Saharan Africa, including in Duffy-negative hosts (Gunalan et al. 2018; Twohig et al. 2019). The presence of endemic *P. vivax* malaria in sub-Saharan Africa may suggest that the FY\*0 allele may confer only partial protection against *P. vivax* malaria. Our results, which point to a recent, post-European contact exposure of Native American populations to *P. vivax* malaria, would not have had the time to drive the emergence and spread of resistance alleles comparable with those observed in Africa and Europe. Consistently, to date, no known malaria-resistance variants have been identified in Native Americans (Hume 2003; Kwiatkowski 2005).

Irrespective of its role in the past, the rapid spread of *P. vivax* strains resistant to antimalarial drugs is an area of increasing concern. Initially, chloroquine was established as the main therapy against *P. vivax* infections in 1946 (Most and London 1946; Baird 2004). It was a well-tolerated and effective treatment until resistance appeared in the late 1980s and spread through the entirety of the endemic range of *P. vivax* (Rieckmann et al. 1989). However, despite extensive drug resistance within present-day *P. vivax* populations, caused by a variety of resistance loci in multiple genes (Hupalo et al. 2016), chloroquine–primaquine combined therapy remains the most commonly prescribed treatment (Phillips et al. 1996), as few other therapeutic strategies are available. The increase in frequency of drug resistant strains is thus a significant public health threat with major human and economic costs.

Our historical sample predates the use of all anti-malaria drugs, with the exception of quinine which was introduced in Europe as early as 1683 (Achan et al. 2011). Ebro-1944 carries the ancestral allele in an overwhelming number of SNPs (99.3%) known to have undergone selection in modern strains, including those associated with drug resistance in genes such as *DHFR-TS* (de Pecoulas et al. 1998; Leartsakulpanich et al. 2002; Imwong et al. 2003; Ganguly et al. 2014; Huang et al. 2014) and *MDR1* (Brega et al. 2005; Sá et al. 2005; Barnadas, Ratsimbaoa, et al. 2008; Orjuela-Sánchez et al. 2009) (supplementary tables 8 and 9, Supplementary Material online). Conversely, Ebro-1944 carries three variants in the *pvmr1* and *pvdhps* genes that are plausible drug-resistance candidates against sulfadoxine and chloroquine. The presence of these alleles in Ebro-1944 might reflect standing variation in historical *P. vivax* populations for alleles providing resistance to modern antimalarial drugs. Alternatively, these could have been selected for by the historical use of quinine.

Our study stresses the value of old microscopy slides and, more generally, of antique medical collections, as a unique and under-used resource for retrieving genomic information on pathogens from the past, including eradicated strains that could not be studied from contemporary specimens. For example, in addition to the results reported here, we also retrieved a partial *P. falciparum* genome from the same set of slides, which allowed us to demonstrate a stronger phylogeographic affinity of the extinct European *P. falciparum* lineage to present-day strains in circulation in central south Asia, rather than Africa (de-Dios et al. 2019). We note that the slides we analyzed here were stained but not fixed and it remains to be explored what additional DNA damage is exerted by different fixation methods. In addition, our slides date from the years 1942 to 1944; however, it is likely that older slides are available in both public and private collections given the popularity of microscopy in Victorian times. A future objective will be to ascertain if massive genomic data retrieval can be achieved from even older microscopy slides.

There is also potential to retrieve ancient *Plasmodium* sequences directly from archaeological specimens. The recent retrieval of *P. falciparum* sequences from ancient Roman human skeletal remains (Marciniak et al. 2016) demonstrates this approach is technically feasible, and as *P. vivax* infection is more prevalent than *P. falciparum*, it is plausible that further ancient strains from osteological material could be reported in the near future. An additional possibility would be to directly retrieve *Plasmodium* sequences from *Anopheles* remains preserved in ancient lake sediments or in museum collections. The generation of additional historical sequences—both from Europe and from the Americas—together with an increased sequencing effort of extant *P. vivax* strains from under-sampled areas is our best hope to reconstruct the evolutionary history of this major parasite in more detail.



## Materials and Methods

### Samples

The slides analyzed here belong to the personal collection of the descendants of Dr Ildefonso Canicio, who worked in the antimalarial center established by the Catalan Government at Sant Jaume d'Enveja (Ebro Delta, Spain) in 1925. Four slides were analyzed, three of them included in a previous study (Gelabert et al. 2016). The new sample was a drop of blood from a double slide, stained with Giemsa (fig. 1b).

### DNA Extraction

DNA extraction was performed by incubating the slide with 20  $\mu$ l of extraction buffer (10 mM Tris-HCl [pH 8], 10 mM NaCl, 5 mM CaCl<sub>2</sub>, 2.5 mM EDTA, 1% SDS, 1% Proteinase K, 0.1% DTT [w/v]) in an oven at 37 °C for 20 min for a total of three rounds. The resulting dissolved bloodstain and buffer were collected in a 1.5 ml Lobind Eppendorf and then incubated for 1 h at 56 °C. This was subsequently added to 10 $\times$  volume of modified binding buffer (Allentoft et al. 2015) and passed through a Monarch silica spin column (NEB) by centrifugation (supplementary methods section 1 and fig. 15, Supplementary Material online). The column was washed once with 80% ethanol and DNA was subsequently released with EBT buffer to a final volume of 40  $\mu$ l (see supplementary material section 1, Supplementary Material online). All the analyses were performed in dedicated ancient DNA laboratories where no previous genetic work on *Plasmodium* had been carried out, in both Barcelona (extraction of slides in 2016) and Copenhagen (extraction of slides in 2017).

### Library Preparation and DNA Sequencing

Shotgun sequencing libraries for the Illumina platform were prepared using a single-tube protocol for double-stranded DNA (Carøe et al. 2018), with minor modifications and improvements as detailed in Mak et al. (2017) (supplementary methods section 2, Supplementary Material online). Sequencing was performed at the Natural History Museum of Denmark on one lane of an Illumina HiSeq2500 instrument in paired end mode running 125 cycles. This extraction and amplification process resulted in using all the genetic material we could source from the available slides.

### Sequence Mapping

The sequenced reads were analyzed with FastQC to determine the quality prior to and after adapter clipping. The 3' read adapters and consecutive bases with low-quality scores were removed using cutadapt 1.18 (Martin 2011). Reads shorter than 30 bp and bases with a quality score lower than 30 were also excluded. To increase the final coverage, all *Plasmodium* reads were pooled. As the blood samples had known coinfection with *P. falciparum*, we mapped all reads to both the *P. vivax* Pv01 reference genome (Auburn et al. 2016) and the *P. falciparum* 3D7 reference genome (Gardner et al. 2002). For the small fraction of reads mapping to both references (0.4%), we took forward only those reads which showed a lower edit distance to *P. vivax* over *P. falciparum* (supplementary fig. 1, Supplementary Material online). Mapping of

*P. vivax* reads was then performed with Burrows–Wheeler Aligner (BWA) (Li and Durbin 2009) 0.7.1 aln (supplementary methods section 2, Supplementary Material online). Duplicated reads were deleted using Picard tools 2.18.6 MarkDuplicates. MapDamage 2.0 (Ginolhac et al. 2011) was applied to check for signatures of postmortem damage at the ends of the reads to validate the reads were associated with a historic sample rather than deriving from modern contamination. C to T and G to A substitutions at the 5' ends and 3' ends, respectively, were found to be present at a frequency of about 2.5% (supplementary fig. 2, Supplementary Material online); consistent with the age of the sample and in agreement with both the degree of damage previously detected in the mtDNA reads (Gelabert et al. 2016) and the damage profile of the human genetic component (supplementary fig. 3, Supplementary Material online). As a result, the first two nucleotides of each read were also trimmed.

The newly generated paired-end *P. vivax* reads were merged with the sequencing reads generated in 2016 (Gelabert et al. 2016). We refer to the resulting pooled sample as Ebro-1944. Genotypes were called from the alignment with GATK v3.7 UnifiedGenotyper (McKenna et al. 2010), using a minimum base quality of 30 and the standard confidence call threshold of 50. Genotype calls were filtered further with VCFtools (Danecek et al. 2011), excluding: 1) heterozygous calls, 2) calls with depth of coverage <2, 3) calls present in the telomeres and subtelomeres (Pearson et al. 2016), 4) indels (supplementary figs. 4 and 5 and table 3, Supplementary Material online). SNPs were annotated using SnpEff (Cingolani et al. 2012) for the analysis of variants associated with drug resistance.

### Population Genetics Data Set

The data set used in population genetics analyses comprised the nuclear sequences of 337 previous published samples of *P. vivax* (Hupalò et al. 2016; Pearson et al. 2016; Cowell et al. 2017, 2018; Rodrigues et al. 2018), representing the global diversity of currently available *P. vivax* genomes (supplementary tables 4 and 11, Supplementary Material online).

Sequence reads were aligned against the Sal1 reference genome (Carlton et al. 2008) with BWA 0.7.1 aln (Li and Durbin 2009) using default parameters. Duplicated reads were removed using Picard tools 2.18.6. Reads with mapping qualities below 30 were removed using SAMtools 1.6 (Li et al. 2009). For analyses requiring incorporation of an out group, we additionally mapped reads from the *P. cynomolgi* M strain (Pasini et al. 2017) against the Sal1 reference genome following the same protocol.

We used GATK v3.7 UnifiedGenotyper (McKenna et al. 2010) for SNP calling with a number of adjustments for working with *Plasmodium* genomes and ancient DNA. First, we selected 297 samples that had more than the 70% of the Sal1 reference genome covered and presented more than 3,000 substitutions. Using this filtered data set of high-quality samples, we called variants using a mapping quality >30, depth of coverage >20 and a standard call confidence >50. We removed those SNPs that mapped to repetitive regions of the *P. vivax* reference genome (Pearson et al. 2016), heterozygous



calls suggesting possible mixed infections, and SNPs that were present in less than three samples. The resultant data set included 131,309 SNPs and 277 strains. We used this catalog to genotype all remaining samples in the data set. For the individual genotyping, we called SNPs with GATK v3.7 UnifiedGenotyper as before, removing all heterozygous calls, and all variants with a minor allele frequency below 0.01%. The final data set comprised 338 samples and 128,081 SNPs. The genotypes for Ebro-1944 were called by selecting one random read that mapped each position of the data set, a pseudo-haploid calling approach which is advocated for low coverage aDNA (Mathieson et al. 2015). This resulted in the Ebro-1944 sequence covering 77,425 of the 128,081 total included positions (supplementary table 3, Supplementary Material online).

### Allele-Frequency-Based Measures of Population Structure

The population genetics data set was filtered for SNPs in high linkage disequilibrium (LD) using a 60 SNP sliding window, advancing each time by 10 steps, and removing any SNPs with a correlation coefficient  $\geq 0.1$  with any other SNP within the window (Chang et al. 2015). This left a pruned data set of 38,358 SNPs for analyses relying on independent SNPs. We applied PCA to the LD pruned global data set restricted to only sites covered in all samples (Chang et al. 2015). We additionally clustered our pruned data set using the unsupervised clustering algorithm ADMIXTURE 1.3.0 (Alexander et al. 2009) for values of  $K$  between 1 and 15.  $K = 6$  provided the lowest cross-validation error (supplementary fig. 8, Supplementary Material online and fig. 1c). To evaluate the relationship of Ebro-1944 to other global strains we calculated  $f_4$  statistics using qpDstat available within AdmixTools (Patterson et al. 2012). Setting Ebro-1944 as a target, we explored which strains, grouped by geographic label, share more alleles with Ebro-1944 relative to every pairwise combination of modern strain(s) (X and Y) in our reference data set and relative to *P. cynomolgi* as an out group:  $f_4$  (*P. cynomolgi*, Ebro-1944; X, Y) (supplementary fig. 9, Supplementary Material online).

### Inferring Patterns of Allele and Haplotype Sharing

In addition, we applied an unrelated method to explore patterns of allele and haplotype sharing implemented in CHROMOPAINTER v2 (Lawson et al. 2012). Unlike  $f$ -statistics, this approach does not rely on a user specified topology and can thus consider the relationship of all strains to all others collectively. As this approach requires low levels of missingness across comparisons, we filtered the previously described unpruned population genetics data set for only the positions present in Ebro-1944 and retained only those samples with  $\leq 10\%$  missing data (77,420 sites, 218 samples). A schematic of the workflow is provided in supplementary fig. 7, Supplementary Material online.

Briefly, CHROMOPAINTER calculates, separately for each position, the probability that a “recipient” chromosome is most closely related to a particular “donor” in the data set under a copying model framework (Li and Stephens 2003).

Here, we use all strains as donors and the equivalent strains as recipients in an “all-versus-all” painting approach. To cluster strains, fineSTRUCTURE (Lawson et al. 2012) was applied to the all-versus-all coancestry matrix to group strains based on their inferred painting profiles. Given the variable missingness across the modern strains included in the alignment we implemented several analyses using the CHROMOPAINTER unlinked (allele-sharing) implementation, as well as under the linked CHROMOPAINTER (haplotype-sharing) model. To use the latter, we performed various levels of imputation followed the protocol set out by Samad et al (2015) for *P. falciparum* in BEAGLE v3.3.2 (Browning and Browning 2013). The consistency of our inference under different imputation and filtering criteria was assessed by linear regression (supplementary fig. 12, Supplementary Material online). Further details are provided in supplementary section 4, Supplementary Material online.

### Drug-Resistance Variants Analysis

We used the annotations provided by SnpEff (supplementary table 7, Supplementary Material online) to identify nonsynonymous mutations in genes previously described as being related to antimalarial drug resistance and host infectivity (Cingolani et al. 2012; Gupta et al. 2015; Hupalo et al. 2016; Pearson et al. 2016; Rodrigues et al. 2018). We also screened a set of previous described positions that have shown recent signals of selection in *P. vivax* populations and all potential genetic variants found in Ebro-1944, comprising more than 4,000 SNPs (supplementary tables 8–10, Supplementary Material online).

### Phylogenetic Analysis and Data Set

The whole-genome sequences of 15 modern *P. vivax* samples and Ebro-1944 were mapped against the PvP01 reference assembly (Auburn et al. 2016) (supplementary table 5, Supplementary Material online). These strains were selected with a focus on the Americas and also to include strains sampled over a large temporal span as is required for phylogenetic tip dating. The main motivation for using the PvP01 reference genome for mapping sequence data for phylogenetic analyses stems from this assembly offering a better definition of sub-telomeric genes and repetitive *pir* genes that usually lie in recombinant regions, thus providing greater power to identify and exclude these parts of the genome (Auburn et al. 2016). After calling variants with GATK version 3.7 UnifiedGenotyper, polymorphisms were further filtered by selecting only those SNPs with a coverage  $> 1$  an average mapping quality  $> 30$ , a genotype quality  $> 30$ , and by removing heterozygous positions. The exonic positions were then classified as synonymous and nonsynonymous with SnpEff (Cingolani et al. 2012).

Our final phylogenetic timeline data set spanned 69 years (1944–2013) of evolution (supplementary table 5, Supplementary Material online) across a 34,452 SNP alignment. To filter this alignment for only congruent SNPs for phylogenetic dating we first generated a maximum parsimony phylogeny in MEGA7 (Kumar et al. 2016), evaluating support for each branch over 100 boot-strap iterations. We

then screened for homoplastic sites in the 34,452 SNP alignment that do not support the maximum parsimony phylogeny, using HomoplasyFinder (Crispell et al. 2019). This led to the identification of 13,112 homoplastic SNPs, many of which fell in sub-telomeric regions. All homoplastic sites were subsequently removed from the alignment. In this way we screen and exclude variants from the original alignment that fall in hypervariable regions, that may arise from inaccurate SNP calling or postmortem damage, as well as removing regions that derive from between-lineage genetic recombination or mixed infections.

### Estimating a Timed Phylogeny

To investigate the extent of temporal signal existing in our homoplasy cleaned timeline alignment, we built a maximum likelihood phylogenetic tree, without constraining tip-heights to their sampling times, using RaxML (Stamatakis 2014). These trees were robust to the inclusion of SNPs called at different depths (supplementary fig. 13, Supplementary Material online). After rooting the tree on the *P. cynomolgi* genome, we computed a linear regression between root-to-tip distance and sampling time using the roototip function from BactDating (Didelot et al. 2018). To further confirm the presence of a significant temporal signal, we assessed the significance of this regression following 10,000 steps of date randomization (fig. 3b). After confirmation of temporal signal in the data set, substitution rates were estimated by running a tip-calibrated inference using Markov chain Monte Carlo (MCMC) sampling in BEAST 2 (Bouckaert et al. 2014). The best-fit nucleotide substitution model was estimated as TN93 following evaluation of all possible substitution models in BModelTest (Bouckaert and Drummond 2017). To minimize prior assumptions about demographic history we tested three possible demographic models: the coalescent constant, coalescent exponential, and coalescent Bayesian skyline. In each case we set a log-normal prior on a relaxed evolutionary clock as well as testing under a strict clock model.

To calibrate the tree using tip-dates only, we applied flat priors (i.e. uniform distributions) for the substitution rate ( $1.10E12$ – $1.10E2$  substitutions/site/year), as well as for the age of any internal node in the tree. We ran five independent chains in which samples were drawn every 50,000 MCMC steps from a total of 500,000,000 steps, after a discarded burn-in of 10,000,000 steps. Convergence to the stationary distribution and sufficient sampling and mixing were checked by inspection of posterior samples (effective sample size  $>200$ ) in Tracer v1.6. The best-fit model was selected based on evaluation of both the median likelihood value of the model and the maximum likelihood estimator following path sampling (Baele et al. 2012) (supplementary fig. 14 and table 6, Supplementary Material online).

### Supplementary Material

Supplementary data are available at *Molecular Biology and Evolution* online.

### Acknowledgments

We are grateful to Thomas D. Otto (University of Glasgow) and Thomas Lavsten (University of Copenhagen) for helpful comments and suggestions and to the descendants of Dr Canicio, Miquel, and Ildefons Oliveras for sharing with us their slides. We additionally would like to thank Dr George Busby and Dr Jacob Almagro for useful discussions on chromosome painting of *Plasmodium* sp. This research was supported by a grant from Obra Social “La Caixa,” Secretaria d’Universitats i Recerca Programme del Departament d’Economia i Coneixement de la Generalitat de Catalunya (GRC 2017 SGR 880), Secretaria d’Universitats i Recerca (GRC2017-SGR880), and by FEDER-Ministry of Science, Innovation and Universities (MCIU) (PGC2018-095931-B-100) to C.L.-F. and an European Research Council (ERC) Consolidator Grant (681396-Extinction Genomics) to M.T.P.G. L.v.D., and F.B. acknowledge financial support from the Newton Fund UK–China NSFC initiative (grant MR/P007597/1) and the Biotechnology and Biological Sciences Research Council (BBSRC) (equipment grant BB/R01356X/1). *Plasmodium vivax* genomes are deposited with ENA BioProject ID PRJEB30878. We also thank the Danish National High Throughput Sequencing Centre for help in sequencing.

### Author Contributions

P.G., M.T.P.G., L.v.D., F.B., and C.L.-F. conceived and designed the study; R.E. and C.A. discovered the slides; C.C. developed and performed laboratory analysis; L.v.D., P.G., A.R., T.d.-D., S.G., R.F., I.O., and M.d.M. analyzed data and performed computational analyses; S.H., F.B., T.M.-B., and I.M. provided comments and suggested analyses; L.v.D., F.B., and C.L.-F. wrote the paper with inputs from all coauthors.

### References

- Achan J, Talisuna AO, Erhart A, Yeka A, Tibenderana JK, Baliraine FN, Rosenthal PJ, D’Alessandro U. 2011. Quinine, an old anti-malarial drug in a modern world: role in the treatment of malaria. *Malar J*. 10:144.
- Adekunle AI, Pinkevych M, McGready R, Luxemburger C, White LJ, Nosten F, Cromer D, Davenport MP. 2015. Modeling the dynamics of *Plasmodium vivax* infection and hypnozoite reactivation in vivo. *PLoS Negl Trop Dis*. 9(3):e0003595-18.
- Alexander DH, Novembre J, Lange K. 2009. Fast model-based estimation of ancestry in unrelated individuals. *Genome Res*. 19(9):1655–1664.
- Allentoft ME, Sikora M, Sjögren K-G, Rasmussen S, Rasmussen M, Stenderup J, Damgaard PB, Schroeder H, Ahlström T, Vinner L, et al. 2015. Population genomics of Bronze Age Eurasia. *Nature* 522(7555):167–172.
- Auburn S, Böhme U, Steinbiss S, Trimarsanto H, Hostetler J, Sanders M, Gao Q, Nosten F, Newbold CI, Berriman M, et al. 2016. A new *Plasmodium vivax* reference sequence with improved assembly of the subtelomeres reveals an abundance of *pir* genes. *Wellcome Open Res*. 1(0):4.
- Baele G, Lemey P, Bedford T, Rambaut A, Suchard MA, Alekseyenko AV. 2012. Improving the accuracy of demographic and molecular clock model comparison while accommodating phylogenetic uncertainty. *Mol Biol Evol*. 29(9):2157–2167.
- Baird JK. 2004. Chloroquine resistance in *Plasmodium vivax*. *Antimicrob Agents Chemother*. 48(11):4075–4083.
- Baird JK. 2013. Evidence and implications of mortality associated with acute *Plasmodium vivax* Malaria. *Clin Microbiol Rev*. 26(1):36–57.

- Barnadas C, Ratsimbasa A, Tichit M, Bouchier C, Jahevitra M, Picot S, Menard D. 2008. *Plasmodium vivax* resistance to chloroquine in Madagascar: clinical efficacy and polymorphisms in *pvmr1* and *pvcr1-o* genes. *Antimicrob Agents Chemother.* 52(12):4233–4240.
- Barnadas C, Tichit M, Bouchier C, Ratsimbasa A, Randrianasolo L, Raheirinjafy R, Jahevitra M, Picot S, Ménard D. 2008. *Plasmodium vivax dhfr* and *dhps* mutations in isolates from Madagascar and therapeutic response to sulphadoxine–pyrimethamine. *Malar J.* 7(1):35.
- Battle KE, Gething PW, Elyazar IRF, Moyes CL, Sinka ME, Howes RE, Guerra CA, Price RN, Baird KJ, Hay SI, et al. 2012. The global public health significance of *Plasmodium vivax*. *Adv Parasitol.* 80: 1–111.
- Battle KE, Lucas TCD, Nguyen M, Howes RE, Nandi AK, Twohig KA, Pfeffer DA, Cameron E, Rao PC, Casey D, et al. 2019. Mapping the global endemicity and clinical burden of *Plasmodium vivax*, 2000–17: a spatial and temporal modelling study. *Lancet* 394(10195):332–343.
- Bouckaert R, Heled J, Kühnert D, Vaughan T, Wu C-H, Xie D, Suchard MA, Rambaut A, Drummond AJ. 2014. BEAST 2: a software platform for Bayesian evolutionary analysis. *PLoS Comput Biol.* 10(4):e1003537.
- Bouckaert RR, Drummond AJ. 2017. BModelTest: Bayesian phylogenetic site model averaging and model comparison. *BMC Evol Biol.* 17(1):42.
- Brasil P, Zalis MG, de Pina-Costa A, Siqueira AM, Júnior CB, Silva S, Areas ALL, Pelajo-Machado M, de Alvarenga DAM, da Silva Santelli ACF, et al. 2017. Outbreak of human malaria caused by *Plasmodium simium* in the Atlantic Forest in Rio de Janeiro: a molecular epidemiological investigation. *Lancet Glob Health* 5(10):e1038–1046.
- Brega S, Meslin B, de Monbrison F, Severini C, Gradoni L, Udonsangpetch R, Sutanto I, Peyron F, Picot S. 2005. Identification of the *Plasmodium vivax* *mdr*-like gene (*pvmr1*) and analysis of single-nucleotide polymorphisms among isolates from different areas of endemicity. *J Infect Dis.* 191(2):272–277.
- Browning BL, Browning SR. 2013. Improving the accuracy and efficiency of identity-by-descent detection in population data. *Genetics* 194(2):459–471.
- Buery JC, Rodrigues PT, Natal L, Salla LC, Loss AC, Vicente CR, Rezende HR, Duarte AMRC, Fux B, Malafronte RdS, et al. 2017. Mitochondrial genome of *Plasmodium vivax/simum* detected in an endemic region for malaria in the Atlantic Forest of Espírito Santo state, Brazil: do mosquitoes, simians and humans harbour the same parasite? *Malar J.* 16(1):437.
- Carlton JM, Adams JH, Silva JC, Bidwell SL, Lorenzi H, Caler E, Crabtree J, Angioli SV, Merino EF, Amedeo P, et al. 2008. Comparative genomics of the neglected human malaria parasite *Plasmodium vivax*. *Nature* 455(7214):757–763.
- Carøe C, Gopalakrishnan S, Vinner L, Mak SST, Sinding MHS, Samaniego JA, Wales N, Sicheritz-Pontén T, Gilbert MTP. 2018. Single-tube library preparation for degraded DNA. *Methods Ecol Evol.* 9(2):410–419.
- Carter R. 2003. Speculations on the origins of *Plasmodium vivax* malaria. *Trends Parasitol.* 19(5):214–219.
- Chang CC, Chow CC, Tellier LC, Vattikuti S, Purcell SM, Lee JJ. 2015. Second-generation PLINK: rising to the challenge of larger and richer datasets. *GigaScience* 4(1):7.
- Cingolani P, Platts A, Wang LL, Coon M, Nguyen T, Wang L, Land SJ, Lu X, Ruden DM. 2012. A program for annotating and predicting the effects of single nucleotide polymorphisms, SnpEff: SNPs in the genome of *Drosophila melanogaster* strain w1118; iso-2; iso-3. *Fly* 6(2):80–92.
- Conrad DF, Jakobsson M, Coop G, Wen X, Wall JD, Rosenberg NA, Pritchard JK. 2006. A worldwide survey of haplotype variation and linkage disequilibrium in the human genome. *Nat Genet.* 38(11):1251–1260.
- Cowell AN, Loy DE, Sundararaman SA, Valdivia H, Fisch K, Lescano AG, Baldeviano GC, Durand S, Gerbasi V, Sutherland CJ, et al. 2017. Selective whole-genome amplification is a robust method that enables scalable whole-genome sequencing of *Plasmodium vivax* from unprocessed clinical samples. *MBio* 8(1):pii: e02257-16.
- Cowell AN, Valdivia HO, Bishop DK, Winzeler EA. 2018. Exploration of *Plasmodium vivax* transmission dynamics and recurrent infections in the Peruvian Amazon using whole genome sequencing. *Genome Med.* 10(1):52.
- Crispell J, Balaz D, Gordon SV. 2019. HomoplasmyFinder: a simple tool to identify homoplasies on a phylogeny. *Microb Genomics* 5(1):e000245.
- Culleton R, Coban C, Zeyrek FY, Cravo P, Kaneko A, Randrianarivellosia M, Andrianaranjaka V, Kano S, Farnert A, Arez AP, et al. 2011. The origins of African *Plasmodium vivax*; insights from mitochondrial genome sequencing. *PLoS One* 6(12):e29137.
- Danecek P, Auton A, Abecasis G, Albers CA, Banks E, DePristo MA, Handsaker RE, Lunter G, Marth GT, Sherry ST, et al. 2011. The variant call format and VCFtools. *Bioinformatics* 27(15):2156–2158.
- de Castro MC, Singer BH. 2005. Was malaria present in the Amazon before the European conquest? Available evidence and future research agenda. *J Archaeol Sci.* 32(3):337–340.
- de-Dios T, van Dorp L, Gelabert P, Carøe C, Sandoval-Velasco M, Fregel R, Escosa R, Aranda C, Huijben S, Balloux F, et al. 2019. Genetic affinities of an eradicated *Plasmodium falciparum* European strain. *Microb Genomics* 5:000263.
- de Oliveira TC, Rodrigues PT, Menezes MJ, Gonçalves-Lopes RM, Bastos MS, Lima NF, Barbosa S, Gerber AL, Loss de Moraes G, Berná L, et al. 2017. Genome-wide diversity and differentiation in New World populations of the human malaria parasite *Plasmodium vivax*. *PLoS Negl Trop Dis.* 11(7):e0005824.
- de Pecoulas PE, Basco LK, Tahar R, Ouatas T, Mazabraud A. 1998. Analysis of the *Plasmodium vivax* dihydrofolate reductase–thymidylate synthase gene sequence. *Gene* 211:177–185.
- De Zulueta J. 1973. Malaria and Mediterranean history. *Parassitologia* 15(1):1–15.
- Dharia NV, Bright AT, Westenberger SJ, Barnes SW, Batalov S, Kuhlen K, Borboa R, Federe GC, McClean CM, Vinetz JM, et al. 2010. Whole-genome sequencing and microarray analysis of ex vivo *Plasmodium vivax* reveal selective pressure on putative drug resistance genes. *Proc Natl Acad Sci U S A.* 107(46):20045–20050.
- Didelot X, Croucher NJ, Bentley SD, Harris SR, Wilson DJ. 2018. Bayesian inference of ancestral dates on bacterial phylogenetic trees. *Nucleic Acids Res.* 46(22):e134.
- Escalante AA, Cornejo OE, Freeland DE, Poe AC, Durrego E, Collins WE, Lal AA. 2005. A monkey's tale: the origin of *Plasmodium vivax* as a human malaria parasite. *Proc Natl Acad Sci U S A.* 102(6):1980–1985.
- Escardo F. 1992. Historia de la Cirugía en el Perú. Editorial Monterrico SA.
- Ganguly S, Saha P, Chatterjee M, Maji AK. 2014. Prevalence of polymorphisms in antifolate drug resistance molecular marker genes *pvdhfr* and *pvdhps* in clinical isolates of *Plasmodium vivax* from Kolkata, India. *Antimicrob Agents Chemother.* 58(1):196–200.
- Garnham PCC. 1966. Malaria parasites and other Haemosporidia. Blackwell, Oxford, UK: Davis, Philadelphia; 1132pp.
- Gardner MJ, Hall N, Fung E, White O, Berriman M, Hyman RW, Carlton JM, Pain A, Nelson KE, Bowman S, et al. 2002. Genome sequence of the human malaria parasite *Plasmodium falciparum*. *Nature* 419(6906):498–511.
- Gelabert P, Sandoval-Velasco M, Olalde I, Fregel R, Rieux A, Escosa R, Aranda C, Paaijmans K, Mueller I, Gilbert MTP, et al. 2016. Mitochondrial DNA from the eradicated European *Plasmodium vivax* and *P. falciparum* from 70-year-old slides from the Ebro Delta in Spain. *Proc Natl Acad Sci U S A.* 113(41):11495–11500.
- Gething PW, Patil AP, Smith DL, Guerra CA, Elyazar IR, Johnston GL, Tatem AJ, Hay SI. 2011. A new world malaria map: *Plasmodium falciparum* endemicity in 2010. *Malar J.* 10(1):378.
- Gilbert A, Otto TD, Rutledge GG, Franzone B, Ollomo B, Arnathau C, Durand P, Moukoudoum ND, Okouga A-P, Ngoubangoye B, et al. 2018. *Plasmodium vivax*-like genome sequences shed new insights into *Plasmodium vivax* biology and evolution. *PLoS Biol.* 16(8):e2006035.
- Ginolhac A, Rasmussen M, Gilbert MTP, Willerslev E, Orlando L. 2011. mapDamage: testing for damage patterns in ancient DNA sequences. *Bioinformatics* 27(15):2153–2155.
- Gonzalez-Ceron L, Mu J, Santillán F, Joy D, Sandoval MA, Camas G, Su X, Choy EV, Torreblanca R. 2013. Molecular and epidemiological



- characterization of *Plasmodium vivax* recurrent infections in southern Mexico. *Parasit Vectors* 6:109.
- Gunalan K, Niangaly A, Thera MA, Doumbo OK, Miller LH. 2018. *Plasmodium vivax* infections of Duffy-negative erythrocytes: historically undetected or a recent adaptation? *Trends Parasitol.* 34(5):420–429.
- Gupta A, Thiruvengadam G, Desai SA. 2015. The conserved clag multi-gene family of malaria parasites: essential roles in host–pathogen interaction. *Drug Resist Updat.* 18:47–54.
- Haldar K, Bhattacharjee S, Safeukui I. 2018. Drug resistance in *Plasmodium*. *Nat Rev Microbiol.* 16(3):156–170.
- Hapuarachchi HC, Rungsihirunrat K, Na-Bangchang K, Maestre A, Sibley CH, Suzuki SM, Hawkins VN. 2009. Assessment of the origins and spread of putative resistance-conferring mutations in *Plasmodium vivax* dihydropteroate synthase. *Am J Trop Med Hyg.* 81(2):348–355.
- Hay SI, Guerra CA, Tatem AJ, Noor AM, Snow RW. 2004. The global distribution and population at risk of malaria: past, present, and future. *Lancet Infect Dis.* 4(6):327–336.
- Hedrick PW. 2012. Resistance to malaria in humans: the impact of strong, recent selection. *Malar J.* 11(1):349.
- Howes RE, Battle KE, Mendis KN, Smith DL, Cibulskis RE, Baird JK, Hay SI. 2016. Global epidemiology of *Plasmodium vivax*. *Am J Trop Med Hyg.* 95(Suppl. 6):15–34.
- Howes RE, Piel FB, Patil AP, Nyangiri OA, Gething PW, Dewi M, Hogg MM, Battle KE, Padilla CD, Baird JK, et al. 2012. G6PD deficiency prevalence and estimates of affected populations in Malaria endemic countries: a geostatistical model-based map. *PLoS Med.* 9(11):e1001339.
- Huang B, Huang S, Su X-Z, Tong X, Yan J, Li H, Lu F. 2014. Molecular surveillance of *pvdhfr*, *pvdhps*, and *pvm-dr-1* mutations in *Plasmodium vivax* isolates from Yunnan and Anhui provinces of China. *Malar J.* 13:346.
- Huldén L, Huldén L, Heliövaara K. 2005. Endemic malaria: an “indoor” disease in northern Europe. Historical data analysed. *Malar J.* 4(1):19–13.
- Hume J. 2003. Malaria in antiquity: a genetics perspective. *World Archaeol.* 35(2):180–192.
- Hupalo DN, Luo Z, Melnikov A, Sutton PL, Rogov P, Escalante A, Vallejo AF, Herrera S, Arévalo-Herrera M, Fan Q, et al. 2016. Population genomics studies identify signatures of global dispersal and drug resistance in *Plasmodium vivax*. *Nat Genet.* 48(8):953–958.
- Imwong M, Pukrittayakamee S, Looareesuwan S, Pasvol G, Poirreiz J, White NJ, Snounou G. 2001. Association of genetic mutations in *Plasmodium vivax dhfr* with resistance to sulfadoxine–pyrimethamine: geographical and clinical correlates. *Antimicrob Agents Chemother.* 45(11):3122–3127.
- Imwong M, Pukrittayakamee S, Renia L, Letourneur F, Charlier J-P, Leartsakulpanich U, Looareesuwan S, White NJ, Snounou G. 2003. Novel point mutations in the dihydrofolate reductase gene of *Plasmodium vivax*: evidence for sequential selection by drug pressure. *Antimicrob Agents Chemother.* 47(5):1514–1521.
- Korsinczyk M, Fischer K, Chen N, Baker J, Rieckmann K, Cheng Q. 2004. Sulfadoxine resistance in *Plasmodium vivax* is associated with a specific amino acid in dihydropteroate synthase at the putative sulfadoxine-binding site. *Antimicrob Agents Chemother.* 48(6):2214–2222.
- Kosaisavee V, Suwanarusk R, Chua ACY, Kyle DE, Malleret B, Zhang R, Imwong M, Imerbsin R, Ubalee R, Sámano-Sánchez H, et al. 2017. Strict tropism for CD71+/CD234+ human reticulocytes limits the zoonotic potential of *Plasmodium cynomolgi*. *Blood* 130(11):1357–1363.
- Krotoski WA. 1985. Discovery of the hypnozoite and a new theory of malarial relapse. *Trans R Soc Trop Med Hyg.* 79(1):1–11.
- Kumar S, Stecher G, Tamura K. 2016. MEGA7: molecular evolutionary genetics analysis version 7.0 for bigger datasets. *Mol Biol Evol.* 33(7):1870–1874.
- Kwiatkowski DP. 2005. How malaria has affected the human genome and what human genetics can teach us about malaria. *Am J Hum Genet.* 77(2):171–192.
- Lacerda MVG, Fragoso SCP, Alecrim MGC, Alexandre MAA, Magalhães BML, Siqueira AM, Ferreira LCL, Araújo JR, Mourão MPG, Ferrer M, et al. 2012. Postmortem characterization of patients with clinical diagnosis of *Plasmodium vivax* Malaria: to what extent does this parasite kill? *Clin Infect Dis.* 55(8):e67–74.
- Lawson DJ, Hellenthal G, Myers S, Falush D. 2012. Inference of population structure using dense haplotype data. *PLoS Genet.* 8(1):e1002453.
- Leartsakulpanich U, Imwong M, Pukrittayakamee S, White NJ, Snounou G, Sirawaraporn W, Yuthavong Y. 2002. Molecular characterization of dihydrofolate reductase in relation to antifolate resistance in *Plasmodium vivax*. *Mol Biochem Parasitol.* 119(1):63–73.
- Leclerc MC, Durand P, Gauthier C, Patot S, Billotte N, Menegon M, Severini C, Ayala FJ, Renaud F. 2004. Meager genetic variability of the human malaria agent *Plasmodium vivax*. *Proc Natl Acad Sci U S A.* 101(40):14455–14460.
- Leslie S, Winney B, Hellenthal G, Davison D, Boumertit A, Day T, Hutnik K, Royrvik EC, Cunliffe B, Lawson DJ, et al. 2015. The fine scale genetic structure of the British population. *Nature* 519(7543):309–314.
- Li H, Durbin R. 2009. Fast and accurate short read alignment with Burrows–Wheeler transform. *Bioinformatics* 25(14):1754–1760.
- Li H, Handsaker B, Wysoker A, Fennell T, Ruan J, Homer N, Marth G, Abecasis G, Durbin R. 2009. The sequence alignment/map format and SAMtools. *Bioinformatics* 25(16):2078–2079.
- Li N, Stephens M. 2003. Modeling linkage disequilibrium and identifying recombination hotspots using single-nucleotide polymorphism data. *Genetics* 165(4):2213–2233.
- Lim CS, Tazi L, Ayala FJ. 2005. *Plasmodium vivax*: recent world expansion and genetic identity to *Plasmodium simium*. *Proc Natl Acad Sci U S A.* 102(43):15523–15528.
- Liu W, Li Y, Shaw KS, Learn GH, Plenderleith LJ, Malenke JA, Sundararaman SA, Ramirez MA, Crystal PA, Smith AG, et al. 2014. African origin of the malaria parasite *Plasmodium vivax*. *Nat Commun.* 5:3346.
- Liu W, Sherrill-Mix S, Learn GH, Scully EJ, Li Y, Avitto AN, Loy DE, Lauder AP, Sundararaman SA, Plenderleith LJ, et al. 2017. Wild bonobos host geographically restricted malaria parasites including a putative new *Laverania* species. *Nat Commun.* 8(1):1635.
- Loy DE, Liu W, Li Y, Learn GH, Plenderleith LJ, Sundararaman SA, Sharp PM, Hahn BH. 2017. Out of Africa: origins and evolution of the human malaria parasites *Plasmodium falciparum* and *Plasmodium vivax*. *Int J Parasitol.* 47(2–3):87–97.
- Mak SST, Gopalakrishnan S, Caroe C, Geng C, Liu S, Sinding M-HS, Kuderna LFK, Zhang W, Fu S, Vieira FG, et al. 2017. Comparative performance of the BGISEQ-500 vs Illumina HiSeq2500 sequencing platforms for palaeogenomic sequencing. *GigaScience* 6(8):1–13.
- Marciniak S, Prowse TL, Herring DA, Klunk J, Kuch M, Duggan AT, Bondioli L, Holmes EC, Poinar HN. 2016. *Plasmodium falciparum* malaria in 1st–2nd century CE southern Italy. *Curr Biol.* 26(23):R1220–1222.
- Martin M. 2011. Cutadapt removes adapter sequences from high-throughput sequencing reads. *EMBnetjournal* 17(1):10.
- Mathieson I, Lazaridis I, Rohland N, Mallick S, Patterson N, Roodenberg SA, Harney E, Stewardson K, Fernandes D, Novak M, et al. 2015. Genome-wide patterns of selection in 230 ancient Eurasians. *Nature* 528(7583):499–503.
- Mayxay M, Pukrittayakamee S, Newton PN, White NJ. 2004. Mixed-species malaria infections in humans. *Trends Parasitol.* 20(5):233–240.
- McKenna A, Hanna M, Banks E, Sivachenko A, Cibulskis K, Kernytzky A, Garimella K, Altshuler D, Gabriel S, Daly M, et al. 2010. The Genome Analysis Toolkit: a MapReduce framework for analyzing next-generation DNA sequencing data. *Genome Res.* 20:1298–1303.
- McManus KF, Taravella AM, Henn BM, Bustamante CD, Sikora M, Cornejo OE. 2017. Population genetic analysis of the DARC locus (Duffy) reveals adaptation from standing variation associated with malaria resistance in humans. *PLoS Genet.* 13(3):e1006560.
- Menegon M, Majori G, Severini C. 2006. Genetic variations of the *Plasmodium vivax* dihydropteroate synthase gene. *Acta Trop.* 98(2):196–199.

- Moreira CM, Abo-Shehada M, Price RN, Drakeley CJ. 2015. A systematic review of sub-microscopic *Plasmodium vivax* infection. *Malar J*. 14(1):360.
- Most H, London IM. 1946. Chloroquine for treatment of acute attacks of vivax malaria. *JAMA* 131(12):963–967.
- Mu J, Joy DA, Duan J, Huang Y, Carlton J, Walker J, Barnwell J, Beerli P, Charleston MA, Pybus OG, et al. 2005. Host switch leads to emergence of *Plasmodium vivax* malaria in humans. *Mol Biol Evol*. 22(8):1686–1693.
- Orjuela-Sánchez P, Filho F, Machado-Lima A, Chehuan YF, Costa MR, Alecrim Md, del Portillo HA. 2009. Analysis of single-nucleotide polymorphisms in the *crt-o* and *mdr1* genes of *Plasmodium vivax* among chloroquine-resistant isolates from the Brazilian Amazon region. *Antimicrob Agents Chemother*. 53(8):3561–3564.
- Otto TD, Gilbert A, Crellen T, Böhme U, Arnathau C, Sanders M, Oyola SO, Okouga AP, Boundenga L, Willaume E, et al. 2018. Genomes of all known members of a *Plasmodium* subgenus reveal paths to virulent human malaria. *Nat Microbiol*. 3(6):687–697.
- Pasini EM, Böhme U, Rutledge GG, Voorberg-Van der Wel A, Sanders M, Berriman M, Kocken CH, Otto TD. 2017. An improved *Plasmodium cynomolgi* genome assembly reveals an unexpected methyltransferase gene expansion. *Wellcome Open Res*. 2:42.
- Patterson N, Moorjani P, Luo Y, Mallick S, Rohland N, Zhan Y, Genschoreck T, Webster T, Reich D. 2012. Ancient ADMIXTURE in human history. *Genetics* 192(3):1065–1093.
- Pearson RD, Amato R, Auburn S, Miotto O, Almagro-Garcia J, Amaratunga C, Suon S, Mao S, Noviyanti R, Trimarsanto H, et al. 2016. Genomic analysis of local variation and recent evolution in *Plasmodium vivax*. *Nat Genet*. 48(8):959–964.
- Petersen E, Severini C, Picot S. 2013. *Plasmodium vivax* malaria: a re-emerging threat for temperate climate zones? *Travel Med Infect Dis*. 11(1):51–59.
- Phillips EJ, Keystone JS, Kain KC. 1996. Failure of combined chloroquine and high-dose primaquine therapy for *Plasmodium vivax* malaria acquired in Guyana, South America. *Clin Infect Dis*. 23(5):1171–1173.
- Pletsch D. 1965. Report on a mission carried out in Spain in September–November 1963 for verification of the eradication of malaria. *Rev Sanid Hig Publica (Madr)*. 39(7):309–367.
- Price RN, Douglas NM, Anstey NM. 2009. New developments in *Plasmodium vivax* malaria: severe disease and the rise of chloroquine resistance. *Curr Opin Infect Dis*. 22(5):430–435.
- Prugnolle F, Rougeron V, Becquart P, Berry A, Makanga B, Rahola N, Arnathau C, Ngoubangoye B, Menard S, Willaume E, et al. 2013. Diversity, host switching and evolution of *Plasmodium vivax* infecting African great apes. *Proc Natl Acad Sci U S A*. 110(20):8123–8128.
- Rieckmann KH, Davis DR, Hutton DC. 1989. *Plasmodium vivax* resistance to chloroquine? *Lancet* 2(8673):1183–1184.
- Rieux A, Balloux F. 2016. Inferences from tip-calibrated phylogenies: a review and a practical guide. *Mol Ecol*. 25(9):1911–1924.
- Rodrigues PT, Valdivia HO, de Oliveira TC, Alves JMP, Duarte AMRC, Cerutti-Junior C, Buery JC, Brito CFA, de Souza JC, Hirano ZMB, et al. 2018. Human migration and the spread of malaria parasites to the New World. *Sci Rep*. 8(1):1–13.
- Sá JM, Nomura T, Neves JD, Baird JK, Wellem TE, del Portillo HA. 2005. *Plasmodium vivax*: allele variants of the *mdr1* gene do not associate with chloroquine resistance among isolates from Brazil, Papua, and monkey-adapted strains. *Exp Parasitol*. 109(4):256–259.
- Samad H, Coll F, Preston MD, Ocholla H, Fairhurst RM, Clark TG. 2015. Imputation-based population genetics analysis of *Plasmodium falciparum* Malaria parasites. *PLoS Genet*. 11(4):e1005131.
- Stamatakis A. 2014. RAxML version 8: a tool for phylogenetic analysis and post-analysis of large phylogenies. *Bioinformatics* 30(9):1312–1313.
- Suwanarusk R, Russell B, Chavchich M, Chalfein F, Kenangalem E, Kosaisavee V, Prasetyorini B, Piera KA, Barends M, Brockman A, et al. 2007. Chloroquine resistant *Plasmodium vivax*: in vitro characterisation and association with molecular polymorphisms. *PLoS One* 2(10):e1089.
- Tachibana S-I, Sullivan SA, Kawai S, Nakamura S, Kim HR, Goto N, Arisue N, Palacpac NMQ, Honma H, Yagi M, et al. 2012. *Plasmodium cynomolgi* genome sequences provide insight into *Plasmodium vivax* and the monkey malaria clade. *Nat Genet*. 44(9):1051–1055.
- Tanabe K, Mita T, Jombart T, Eriksson A, Horibe S, Palacpac N, Ranford-Cartwright L, Sawai H, Sakihama N, Ohmae H, et al. 2010. *Plasmodium falciparum* accompanied the human expansion out of Africa. *Curr Biol*. 20(14):1283–1289.
- Taylor JE, Pacheco MA, Bacon DJ, Beg MA, Machado RL, Fairhurst RM, Herrera S, Kim J-Y, Menard D, Póvoa MM, et al. 2013. The evolutionary history of *Plasmodium vivax* as inferred from mitochondrial genomes: parasite genetic diversity in the Americas. *Mol Biol Evol*. 30(9):2050–2064.
- Tishkoff SA, Varkonyi R, Cahinhinan N, Abbes S, Argyropoulos G, Destro-Bisul G, Drousiotou A, Dangerfield B, Lefranc G, Loiselet J, et al. 2001. Haplotype diversity and linkage disequilibrium at human G6PD: recent origin of alleles that confer malarial resistance. *Science* 293(5529):455–462.
- Tjitra E, Anstey NM, Sugiarto P, Warikar N, Kenangalem E, Karyana M, Lampah DA, Price RN. 2008. Multidrug-Resistant *Plasmodium vivax* associated with severe and fatal Malaria: a prospective study in Papua, Indonesia. *PLoS Med*. 5(6):e128.
- Twohig KA, Pfeffer DA, Baird JK, Price RN, Zimmerman PA, Hay SI, Gething PW, Battle KE, Howes RE. 2019. Growing evidence of *Plasmodium vivax* across malaria-endemic Africa. *PLoS Negl Trop Dis*. 13(1):e0007140.
- Waters MR, Keene JL, Forman SL, Prewitt ER, Carlson DL, Wiederhold JE. 2018. Pre-Clovis projectile points at the Debra L. Friedkin site, Texas—implications for the Late Pleistocene peopling of the Americas. *Sci Adv*. 4(10):eaat4505.
- Weiss DJ, Lucas TCD, Nguyen M, Nandi AK, Bisanzio D, Battle KE, Cameron E, Twohig KA, Pfeffer DA, Rozier JA, et al. 2019. Mapping the global prevalence, incidence, and mortality of *Plasmodium falciparum*, 2000–17: a spatial and temporal modelling study. *Lancet* 394(10195):322–331.
- White NJ. 2011. Determinants of relapse periodicity in *Plasmodium vivax* malaria. *Malar J*. 10(1):297.
- World Health Organisation. 2017. World malaria report 2017. Available from: <https://www.who.int/malaria/publications/world-malaria-report-2017/en/>; last accessed November 14, 2019.
- Zhao X, Smith DL, Tatem AJ. 2016. Exploring the spatiotemporal drivers of malaria elimination in Europe. *Malar J*. 15(1):1–13.
- Zhu SJ, Almagro-Garcia J, McVean G. 2018. Deconvolution of multiple infections in *Plasmodium falciparum* from high throughput sequencing data. *Bioinformatics* 34(1):9–15.