

# $\gamma$ -Klotho is correlated with resistance to docetaxel in castration-resistant prostate cancer

KENTA ONISHI, MAKITO MIYAKE, SHUNTA HORI, SAYURI ONISHI, KOTA IIDA, YOSUKE MORIZAWA, YOSHIHIRO TATSUMI, YASUSHI NAKAI, NOBUMICHI TANAKA and KIYOHIDE FUJIMOTO

Department of Urology, Nara Medical University, Kashihara, Nara 634-8521, Japan

Received March 4, 2019; Accepted October 16, 2019

DOI: 10.3892/ol.2020.11308

**Abstract.** The Klotho (KL) gene was first identified as a potent aging suppressor. The KL family currently comprises of three proteins:  $\alpha$ -Klotho (KLA),  $\beta$ -Klotho (KLB), and  $\gamma$ -Klotho (KLG). Many studies have shown that KLA and KLB participate in tumor progression or suppression, depending on the type of cancer; however, the relationship between KLG and prostate cancer has not yet been studied. Some studies have claimed that KL is correlated to sensitivity to chemotherapy. Here, we investigated the oncogenic potential of KLG in castration-resistant prostate cancer (CRPC). Immunohistochemical analysis using prostate biopsy specimens revealed that patients with high KLG expression in primary prostate cancer tissue had a significantly poor prognosis for overall survival. In addition, the prostate-specific antigen response rate after docetaxel (DTX) therapy in patients with high KLG expression was lower than that in patients with low KLG expression. To evaluate the potential of KLG as a therapeutic target in human prostate cancer, we generated a xenograft model of human CRPC cell line (PC-3) in male athymic mice. The animals were randomly divided into four groups as follows: i) control group (vehicle only); ii) DTX group (intraperitoneal administration); iii) small interfering RNA targeting KLG (KLG siRNA) group (intratumoral administration); and iv) a combination group (DTX plus KLG siRNA). After 3 weeks of treatment, the tumor weight and tumor Ki-67 labeling index were significantly lower in the KLG siRNA group and the

combination group than in the control group. Sensitivity to DTX was increased upon treatment with KLG siRNA. These findings suggest that KLG expression in primary prostate cancer lesions is associated with resistance to DTX in CRPC and has potential as a diagnostic and therapeutic target for patients with CRPC.

## Introduction

Prostate cancer is the second most commonly diagnosed malignant tumor in men and a major cause of mortality. It is estimated that there will be almost 1.3 million new cases of prostate cancer and 359,000 prostate cancer-associated deaths worldwide in 2018 (1). Once a patient reaches a state of castration-resistant disease, no curative treatment option is available. Castration-resistant prostate cancer (CRPC) has a poor prognosis despite recent therapeutic advances, including docetaxel (DTX), cabazitaxel, sipuleucel-T, abiraterone acetate, enzalutamide, and radium-223 therapies (2). Presently, DTX is established as an effective treatment and is widely used for patients with CRPC (3,4). According to the National Comprehensive Cancer Network guidelines, DTX is still recommended as a first-line chemotherapeutic agent (5). However, not all patients with CRPC receive clinical benefit from DTX treatment. Therefore, to choose an optimal treatment and to prolong patient survival, the identification of predictive markers for DTX treatment in patients with CRPC is urgently required.

The Klotho (KL) gene was originally identified as an anti-aging gene in 1997 (6). KL is a transmembrane protein belonging to the glycosyl hydrolase 1 family. The KL family comprises of three proteins,  $\alpha$ -Klotho (KLA),  $\beta$ -Klotho (KLB), and  $\gamma$ -Klotho (KLG). KLGs act as cofactors of fibroblast growth factors (FGFs) 19, 21 and 23 (7-9). The FGF pathway performs a vital role in various stages of cancer development, including mitogenesis, cell differentiation, and angiogenesis (10-12).

Recently, several studies have reported the association between KLGs and cancer development. Many researchers have treated KLA as a new biomarker for cancer (13). Most reports have revealed that KLA serves as a tumor suppressor, via the promotion of apoptosis and inhibition of transforming factor- $\beta$ 1 signaling involved in epithelial-mesenchymal transition (EMT) (14-18). Contrarily, the role of KLB in cancer development is still controversial (19-21). We have previously

---

*Correspondence to:* Professor Kiyohide Fujimoto, Department of Urology, Nara Medical University, 840 Shijo-cho, Kashihara, Nara 634-8521, Japan  
E-mail: kiyokun@naramed-u.ac.jp

*Abbreviations:* KL, Klotho; KLA,  $\alpha$ -Klotho; KLB,  $\beta$ -Klotho; KLG,  $\gamma$ -Klotho; CRPC, castration-resistant prostate cancer; IHC, immunohistochemistry; OS, overall survival; DTX, docetaxel; siRNA, small interfering RNA; FGF, fibroblast growth factor; EMT, epithelial-to-mesenchymal transition; FGFR, fibroblast growth factor receptor; DSS, disease-specific survival; PSA, prostate-specific antigen

*Key words:* KLG, CRPC, DTX, OS, xenograft model, PC-3

reported the association between KLA/KLB and bladder cancer and showed that KLB contributes to cancer development (22). However, the relationship between KLG and cancer progression remains unclear. Currently, there are very few reports on the association between KLG and cancer (9,23,24). One study reported that KLA enhances the activity of chemotherapeutic drugs on pancreatic cancer cells (25). It has been suggested that KLA may be correlated with the sensitivity to chemotherapy. KLG acts mainly with FGF19 and FGF receptor 4 (FGFR4) (26). FGF19/FGFR4 signaling promotes cancer progression together with the expression of KLA and/or KLB as cofactors in prostate cancer (20,27). In this study, we aimed to investigate the effect of KLG on tumor growth in prostate cancer, and thereby to determine its importance in therapeutic strategies.

## Materials and methods

**Patients.** A total of 65 patients with CRPC who received DTX chemotherapy from December 2004 to April 2015 at our institution were eligible for inclusion in our study. We excluded patients with hormone-sensitive prostate cancer, those diagnosed with nonadenocarcinoma histology such as small-cell carcinoma, and those with no prostate biopsy specimen available for immunohistochemistry (IHC) staining. Overall, 36 patients were included in this study (Table I). This study was retrospective and the Ethics Committee of Nara Medical University approved the study protocol (reference ID: 1256). Written informed consent was obtained from all participants.

**IHC analysis of prostate biopsy specimens.** IHC was carried out to evaluate the expression levels of KLA, KLB, and KLG. Tissue sections were obtained from paraffin-embedded tissue blocks, which were sliced and placed on Super Frost Plus microscope slides (Thermo Fisher Scientific, Yokohama, Japan). The tissue sections were deparaffinized and antigen retrieval was carried out in citric acid buffer (pH 6.0) in an autoclave. We performed IHC staining using a Histofine ABC kit (Nichirei). The slides were treated with 1% hydrogen peroxide in methanol to block endogenous peroxidase activity. The slides were then incubated overnight at 4°C with anti-KLA antibody (sc-22220; rabbit polyclonal, dilution 1:500), anti-KLB antibody (sc-74343, rabbit polyclonal, dilution 1:200), and anti-KLG antibody (sc-137559; goat polyclonal, dilution 1:500). All these antibodies were purchased from Santa Cruz Biotechnology, Inc.. The slides were counterstained with hematoxylin, dehydrated, and mounted on a cover slide. We evaluated each slide using IHC scores (IHC score=intensity score + population score; intensity: None=0, low=1, intermediate=2, and high=3; population: None=0; 0-25%=1; 25-50%=2; 50-75%=3; and 75-100%=4). KLA/KLB/KLG expression was classified as low or high based on the IHC score (low=IHC score $\leq$ 4; high=IHC score 5 or 6) (22).

**Cell culture.** Three human prostate cancer cell lines, PC-3, DU145, and LNCaP, were purchased from the American Type Culture Collection. Cells were maintained in RPMI-1640 medium (Nacalai Tesque, Kyoto, Japan), supplemented with 10% fetal bovine serum (JRH) and 1% penicillin-streptomycin

(Thermo Scientific, Yokohama, Japan) in a standard humidified incubator at 37°C in an atmosphere of 5% CO<sub>2</sub>.

**Reverse transcription-quantitative PCR (RT-qPCR).** RT-qPCR was performed to measure the expression level of KLG mRNA in cell lines. Cells were seeded in 6-well plates at a density of 1x10<sup>5</sup> cells/well in growth medium and incubated for 24 h. Total RNA was extracted using an RNeasy Mini kit (Qiagen), according to the manufacturer's instructions. Conversion to cDNA was performed using a High Capacity cDNA Reverse Transcription kit (Invitrogen; Thermo Fisher Scientific, Inc.). When we converted to cDNA in RT-PCR, concentration of RNA was 1,000 ng. Quantitative RT-PCR was performed using the cDNA, 0.2  $\mu$ M of each primer, and 10  $\mu$ l of AmpliTaq Gold<sup>®</sup> PCR Master Mix (Applied Biosystems; Thermo Fisher Scientific, Inc.) under the following conditions: Denaturation at 95°C for 10 min; 40 cycles of denaturation at 95°C for 15 s; annealing and a final extension at 60°C for 1 min. PCR products were then electrophoresed in a 1.5% agarose gel and visualized using a transilluminator. Subsequent to verifying the mRNA expression of KLG, semi-quantitative RT-PCR for this gene was performed in cell lines. The gene-specific primer used in this study was Hs01385107\_m1 for human KLG. Primer sequence of KLG was not available. Glyceraldehyde 3-phosphate dehydrogenase (GAPDH) was used as a control.

**Western blot analysis of human prostate cell lines.** Total cellular protein lysate was prepared as described previously (28). Protein was extracted from PC-3 and DU145 cells and concentration of proteins was 10  $\mu$ g. In brief, tumor samples were minced and incubated in lysis buffer (250 mmol/l Tris-HCl (pH 6.8), 2% Sodium Dodecyl Sulphate (SDS), and 10% glycerol) and protein inhibitor cocktail (Sigma-Aldrich, St. Louis, US) for protein extraction. The membranes were incubated for 1 h with primary anti-KLG antibody (Santa Cruz Biotechnology, Inc.; sc-137559, goat polyclonal, dilution 1:200) or anti-GAPDH mouse monoclonal antibody (dilution 1:10,000) as an internal loading control, followed by 1 h with horseradish peroxidase-conjugated anti-rabbit IgG (1:5,000) or anti-mouse IgG antibody (1:20,000).

**Animals.** Animal care was conducted in compliance with the recommendations of The Guide for Care and Use of Laboratory Animals (National Research Council). This study was approved by the animal facility committee at Nara Medical University (protocol ID: 11896). Male athymic BALB/c nu/nu mice, 6 to 8 weeks old, were purchased from Oriental Bio Service. All mice were maintained under pathogen-free conditions and provided with sterile food and water. We monitored the dietary intake and body weight of mice every day and stop experiment if we observe marked loss of appetite and weight loss. During the experiment, if weight loss of 20% or more occurs within 2 to 3 days or weight loss of 25% or more occurs within 7 days, euthanasia will be performed.

**Xenograft model and intratumoral treatment.** After allowing mice to acclimate to the animal facility for 1 week, PC-3 (5x10<sup>5</sup>/tumor) cells were inoculated subcutaneously in 50  $\mu$ l RPMI-1640 medium, together with 50  $\mu$ l of Matrigel (Corning Incorporated). When the tumors reached 5 mm in diameter,

Table I. Clinicopathological background of 36 patients with castration-resistant prostate cancer who were administered DTX at our hospital and comparison of the variables with low and high KLG expression.

Variables	Number of patients, n=36	KLG expression		P-value
		Low, n=13	High, n=23	
Age, years	68.5 (62.8, 73.3)	65 (60, 73)	71 (65.5, 73.5)	0.24
PSA at diagnosis, ng/ml	102 (30.1, 398.3)	33.9 (19.3, 170)	251 (50.7, 714.5)	0.016 <sup>b</sup>
Total Gleason Score				0.19
6	1	1	0	
7	3	2	1	
8-	32	10	22	
T stage				0.44
T2	6	3	3	
T3-4	30	10	20	
N stage				0.029 <sup>a</sup>
N0	19	10	9	
N1-2	17	3	14	
M stage				0.17
M0	14	7	7	
M1	22	6	16	
Primary therapy				0.031 <sup>a</sup>
RP	6	4	2	
RT	4	3	1	
ADT	26	6	20	
Survival after diagnosis, months	54.5 (39.8, 88)	80 (51, 100)	50 (33, 68)	0.048 <sup>b</sup>
Period from ADT to DTX, months	27 (16.8, 44.3)	37 (22, 50)	25 (11, 37.5)	0.16
Change rate of PSA, %	-83.7 (-97.8, -35.3)	-94.4 (-99.3, -65.8)	-57.9 (-95.9, -12.7)	0.045 <sup>b</sup>
DTX cycle, n	8 (4, 11)	10 (7, 12)	6 (3.5, 10)	0.051

Patients with low KLG expression had significantly lower initial PSA values (P=0.016), fewer lymph node metastases (P=0.029), higher rate of radical prostatectomy as primary therapy, longer OS (P=0.048), and better PSA response rate after DTX (P=0.045) than patients with high KLG expression. Data are presented as the median (interquartile range). <sup>a</sup> $\chi^2$  test or Fisher's exact test; <sup>b</sup>Mann-Whitney U test. KLG,  $\gamma$ -Klotho; PSA, prostate specific antigen; RP, radical prostatectomy; RT, radiation therapy; ADT, androgen-deprivation therapy; DTX, docetaxel.

we randomly allocated the mice into four groups (n=4 mice per group): Control (vehicle only), DTX (intraperitoneal injection, 5 mg/kg), KLG siRNA [intratumoral injection, 10  $\mu$ g of siRNA with 1.2  $\mu$ l of *in vivo*-jetPEI (Polyplus-transfection Inc.) at an N/P ratio of 6, according to the manufacturer's protocol], and a combination group (DTX plus KLG siRNA). DTX was administered twice-a-week for 3 weeks and KLG siRNA was administered once-a-week for 3 weeks. *In vivo*-jet PEI was used in conjunction with siRNA to ensure optimal delivery in the xenograft tumor tissue (29). We underwent subcutaneous administration of siRNA from various direction around the tumor, taking care of not to sting the tumor. The mice of the control group were received intraperitoneal and intratumoral injection of PBS. We used isoflurane (induction 4%, maintenance 2%) as inhalation anesthesia during inoculation of cancer cells subcutaneously and administration of therapeutic agents. Tumor diameters were measured once-a-week with electronic calipers. Tumor volume was calculated using the following formula: {(width)<sup>2</sup> x length}/2 (mm<sup>3</sup>). Five weeks after inoculation, all mice were euthanized by exsanguination

under anesthesia with isoflurane (4%); tumors were harvested for IHC analysis. After harvest, we performed cervical dislocation as the additional euthanasia procedure to verify the death of the mice.

**IHC analysis of xenograft tumors.** Tumors were examined using IHC staining analysis in the same manner as described above. Anti-KLG antibody and anti-Ki-67 antibody (clone MIB-1, ready to use; Dako) were used for IHC analysis. Ki-67 was scored as the percentage of nuclei-stained cells among all cancer cells, regardless of the intensity (30).

**Statistical analysis.** All statistical analyses were performed using PASW Statistics 17.0 (SPSS, Inc.) and Prism software 5.00 (GraphPad Software, Inc.). Figures were constructed using GraphPad Prism 5.0. Comparisons between time points for individual data were performed using a Student's t-test or Mann-Whitney U test and comparisons between treatment groups were performed using a Kruskal-Wallis test followed by a Steel-Dwass test. P<0.05

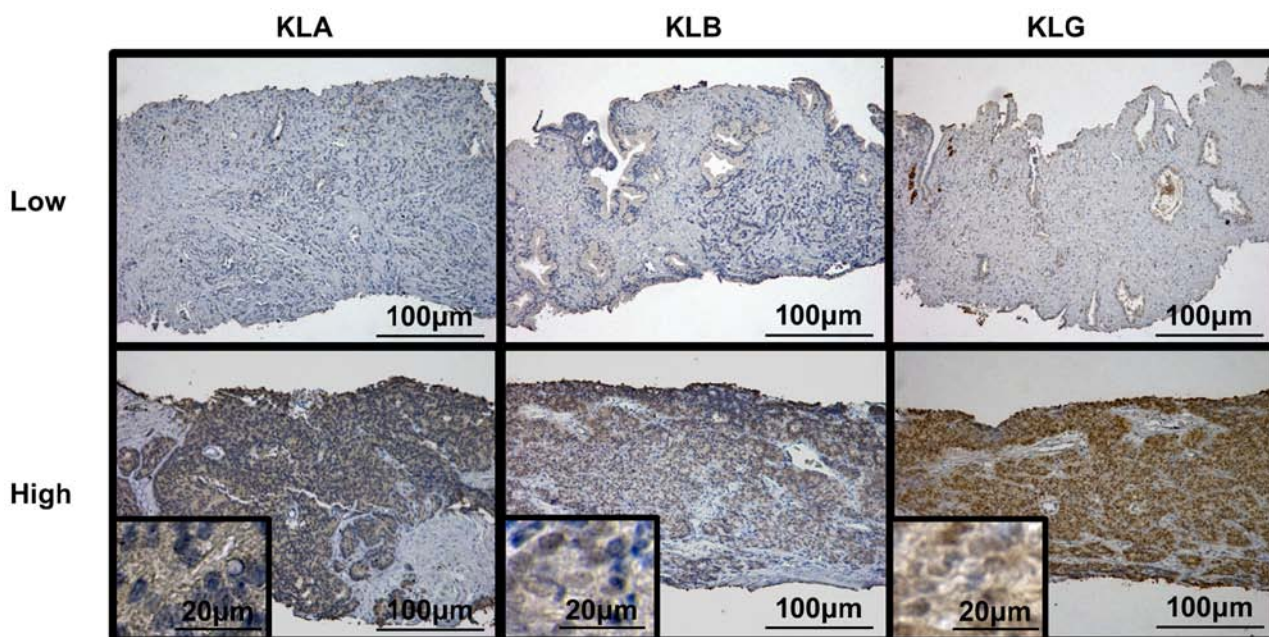


Figure 1. Typical images of low and high expression of Klotho genes. KLA,  $\alpha$ -Klotho; KLB,  $\beta$ -Klotho; KLG,  $\gamma$ -Klotho.

was considered to indicate a statistically significant difference. The Cox proportional-hazards model was used for univariate and multivariate analyses, to identify prognostic factors of overall survival (OS) in patients with CRPC. For multivariate analysis, those variables with  $P < 0.05$  in the univariate analysis were selected. We determined cutoff values for all variables from ROC curves. The OS and disease-specific survival (DSS) curves were obtained using the Kaplan-Meier method and compared using the log-rank test for each prognostic variable.

## Results

*Association between expression levels of KLoths and survival of patients with CRPC.* We performed IHC analysis for KLoths using human prostate biopsy samples and explored the relationship between the expression levels of KLoths and clinicopathological variables. Fig. 1 shows representative images of low and high expression levels of each KL. We calculated the IHC score for each slide and divided these into two groups, according to the scores. Of the 36 patients, 17 (47.2%) had low KLA expression and 19 (52.8%) had high KLA expression; 15 (41.7%) patients had low KLB expression and 21 (58.3%) had high KLB expression. Regarding expression of KLG, 13 (36.1%) patients showed low expression and 23 (63.9%) had high KLG expression. Table I shows the clinicopathological background of the 36 patients with CRPC who were administered DTX at our hospital and comparison of the variables according to low and high KLG expression.

The Kaplan-Meier curves for the association between OS and the expression level of each KL are depicted in Fig. 2A-C. Although there was no significant difference in OS between the low and high groups of KLA expression ( $P = 0.43$ ), high expression levels of KLB and KLG were associated with shorter OS than low expression levels ( $P = 0.021$  and  $P = 0.018$ , respectively). The Kaplan-Meier curves for the association between DSS and the expression level of each KL are shown

in Fig. 2D-F. Similarly, there was no significant difference in DSS between the low and high groups of KLA expression ( $P = 0.46$ ); high expression levels of KLB and KLG were associated with shorter DSS than low expression levels ( $P = 0.048$  and  $P = 0.035$ , respectively).

*Expression level of KLG is a prognostic factor in patients with CRPC.* Table II shows the univariate and multivariate analyses of prognostic factors for OS after the initiation of DTX in patients with CRPC. High expressions of KLB and KLG were prognostic factors for OS in the univariate analysis ( $P = 0.032$  and  $P = 0.029$ , respectively). The multivariate analysis revealed that only high expression of KLG was an independent prognostic factor ( $P = 0.012$ ).

*Association of KLG expression with clinicopathological variables and response change rate of prostate-specific antigen (PSA) after DTX therapy in CRPC.* Based on the result of prognostic factors, we focused on the association between the expression level of KLG and CRPC. In comparison with patients who had high KLG expression, those with low KLG expression had significantly lower initial PSA at diagnosis ( $P = 0.016$ ), negative lymph node metastasis ( $P = 0.029$ ), higher proportion of radical prostatectomy as primary therapy ( $P = 0.031$ ), longer OS ( $P = 0.048$ ), and better PSA response rate after the initiation of DTX ( $P = 0.045$ ). In addition, patients in the high expression group received ADT as primary therapy rather than those in the low expression group ( $P = 0.031$ ) (Table I). Fig. 3A represents a waterfall plot of the response change rate of PSA. Patients with high KLG expression had a poorer PSA response rate after the initiation of DTX therapy than patients with low expression ( $P = 0.043$ ; Fig. 3B).

*PC-3 cells expressing endogenous KLG and KLG siRNA could knock out endogenous KLG in vitro.* To check the expression levels of KLG in human PC-3, DU145, and LNCaP cell lines,

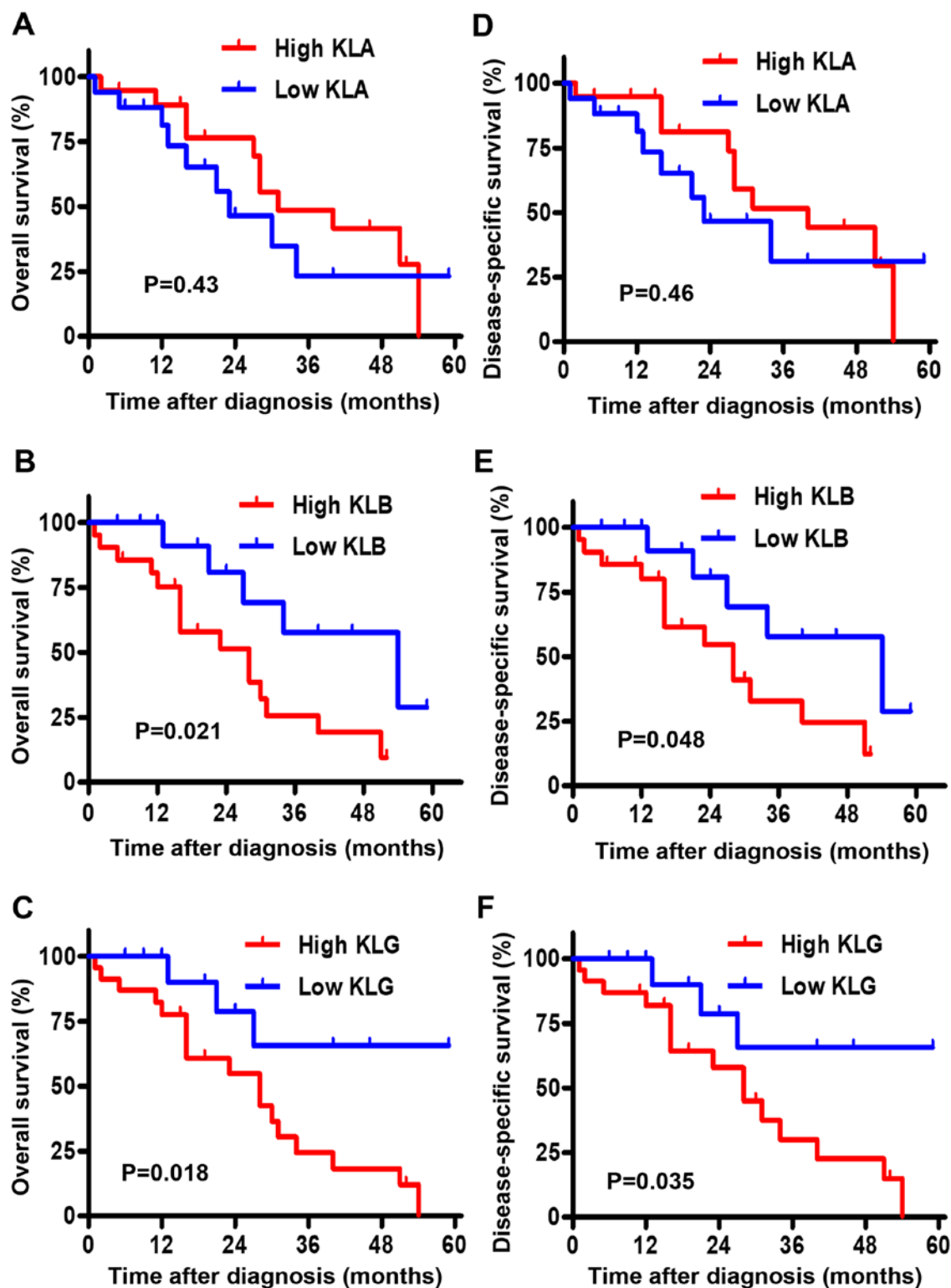


Figure 2. Association between KL expression and OS/DSS. (A-C) Association between OS of 36 patients with CRPC and KL expression. (A) There was no significant association between KLA and OS. (B and C) OS was significantly lower in patients with high KLB and high KLG expression than that in patients with low KLB and low KLG expression, respectively. (D-F) Association between DSS of 36 patients with CRPC and KL expression. (D) There was no significant association between KLA and DSS. (E and F) DSS was significantly lower in patients with high KLB and high KLG expression than that in patients with low KLB and low KLG expression, respectively. KL, Klotho; OS, overall survival; DSS, disease-specific survival; CRPC, castration-resistant prostate cancer; KLA,  $\alpha$ -Klotho; KLB,  $\beta$ -Klotho; KLG,  $\gamma$ -Klotho.

we performed RT-PCR analysis. PC-3 and DU145 human CRPC cells expressed endogenous KLG mRNA; LNCaP cells did not express endogenous KLG mRNA (Fig. 4A). We performed western blot analysis to examine the expression

level of KLG in PC-3 and DU145 cell lines; KLG protein was expressed in PC-3 cells (Fig. 4B). RT-PCR analysis revealed that expression of KLG in PC-3 cells *in vitro* was knocked down in the presence of KLG siRNA (Fig. 4C).

Table II. Univariate and multivariate analysis of prognostic factors of OS in patients with castration-resistant prostate cancer who were administered DTX.

Variables	Univariate analysis			Multivariate analysis		
	HR	95% CI	P-value	HR	95% CI	P-value
Age, years						
<70	1		0.33			
$\geq$ 70	1.6	0.6-3.8				
PSA at diagnosis, ng/ml						
<70	1		0.49			
$\geq$ 70	0.7	0.3-1.8				
Total Gleason Score						
Up to 4+4	1		0.075			
4+5, 5+4, 5+5	2.7	0.9-8.2				
Clinical T stage						
<3	1		0.91			
$\geq$ 3	1.1	0.3-3.8				
Clinical N stage						
<1	1		0.14			
$\geq$ 1	1.9	0.8-4.9				
Clinical M stage						
0	1		0.83			
1	0.9	0.4-2.3				
RP as Primary therapy						
No	1		0.4			
Yes	0.59	0.2-2.1				
Period from ADT to DTX, months						
<25	1		0.17			
$\geq$ 25	0.5	0.2-1.3				
PSA nadir of ADT, ng/ml						
<2	1		0.69			
$\geq$ 2	1.2	0.5-3.0				
Time from PSA nadir of ADT to DTX, months						
<20	1		0.68			
$\geq$ 20	0.83	0.3-2.1				
PSA at starting of DTX						
<50	1		0.77			
$\geq$ 50	0.9	0.4-2.1				
KLA						
Low	1		0.43			
High	0.7	0.3-1.7				
KLB						
Low	1		0.032	1		0.27
High	3.3	1.1-10.1		2	0.6-7.3	
KLG						
Low	1		0.029	1		0.012
High	3.9	1.1-13.5		3.9	1.1-13.4	

KLB and KLG were prognostic factors of OS in univariate analysis. In multivariate analysis, KLG was an independent prognostic factor. OS, overall survival; PSA, prostate specific antigen; RP, radical prostatectomy; ADT, androgen-deprivation therapy; DTX, docetaxel; KLA,  $\alpha$ -Klotho; KLB,  $\beta$ -Klotho; KLG,  $\gamma$ -Klotho; HR, hazard ratio; CI, confidence interval.



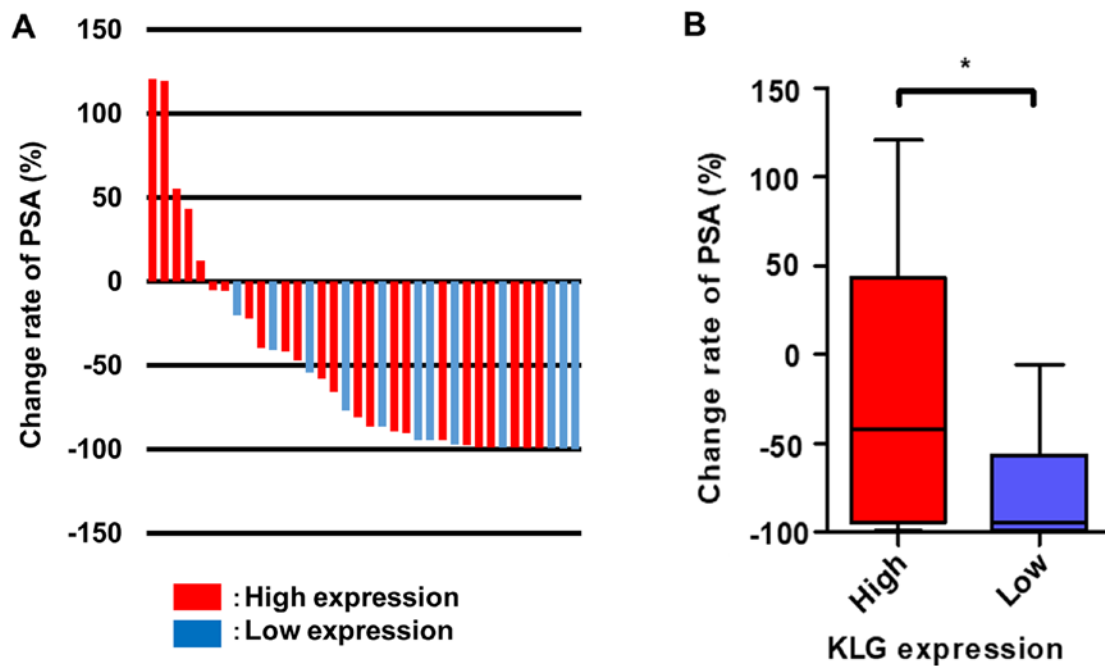


Figure 3. Association between KLG expression and change rate of PSA. Change rate of PSA in patients with castration-resistant prostate cancer after DTX. (A) Waterfall plot of change rate of PSA. (B) Patients with high KLG expression had a poorer PSA response rate after DTX treatment than patients with low expression. Mann-Whitney U test was conducted. \* $P < 0.05$ . KLG,  $\gamma$ -Klotho; PSA, prostate-specific antigen; DTX, docetaxel.

*KLG siRNA treatment inhibits tumor growth in vivo.* We inoculated PC-3 cells subcutaneously into the flanks of male athymic BALB/c nu/nu mice as shown in Fig. 4D. Five weeks after inoculation, all subcutaneous tumors were resected (Fig. 4E). The median body weights of the mice at the beginning of this study in the control group, the DTX treated group, the KLG siRNA treated group and the DTX + KLG siRNA treated group were 18.5 (18-19) g, 20.5 (18-22) g, 19 (18-21) g and 20 (18-21) g, respectively. And the median body weights of the mice at the endpoint of this study were 17 (16-17) g, 19 (18-20) g, 18.5 (17-20) g and 18 (17-20) g, respectively. Significant body weight loss was not observed in any of the treated groups (data not shown).

Four weeks after inoculation, the KLG siRNA treated group and KLG siRNA + DTX treated group started to show significant antitumor effects compared with the control group (data not shown). The median final maximum tumor volumes at the end of this study in the control group, the DTX treated group, the KLG siRNA treated group and the DTX + KLG siRNA treated group were 277.8 (271.5-312.7) mm<sup>3</sup>, 234.9 (201.6-291.2) mm<sup>3</sup>, 207.3 (114.1-255.9) mm<sup>3</sup> and 165.7 (140.9-210.5) mm<sup>3</sup>, respectively. And the median final weight of subcutaneous tumors were 0.29 (0.22-0.4) g, 0.2 (0.17-0.3) g, 0.16 (0.09-0.22) g and 0.11 (0.08-0.14) g, respectively. The final tumor weight was significantly lower in the KLG siRNA and KLG siRNA + DTX treated groups than in the control and DTX only groups at the end of the treatment (Fig. 4F).

Fig. 5A shows representative images of IHC staining with anti-KLG and Ki-67 antibodies. In tumors treated with KLG siRNA and KLG siRNA + DTX, the expression levels of KLG and Ki-67 were significantly lower than those in the control group (Fig. 5B and C). Treatment with KLG siRNA led to decreased expression of KLG. These results suggested that

tumor proliferation and sensitivity to DTX in PC-3 cells were decreased after treatment with KLG siRNA.

## Discussion

Our previous reports indicated that KLB and KLG act as tumor promoters and that KLA does not have an important role as a tumor suppressor or promoter in human bladder cancer (22,23). KLB and KLG work as co-receptors along with the classic FGF receptors (FGFRs) to activate FGF/FGFRs signaling. FGF/FGFRs signaling regulates important biological processes of tumor progression including tumor proliferation, angiogenesis, cell differentiation, and apoptosis (10-12). In prostate cancer, FGF19/FGFR4 signaling promotes cancer progression together with expression of KLA and/or KLB as cofactors (20,27). KLG acts mainly with FGF19 and FGFR4 (26); however, there have been no reports on the association of KLG with prostate cancer. Here, we have investigated a link between human prostate cancer and the KL gene family, including KLG.

Because KLG could be a prognostic factor of OS in patients with CRPC, we focused on KLG and found that KLG plays an important role in tumor progression in prostate cancer. Although the mechanism of tumor growth in relation to KLG is unclear, considering that KLG is a cofactor of FGF/FGFR signaling, tumor growth may be activated through FGF/FGFRs signaling. KLG siRNA had a cytoreductive effect on subcutaneous tumor in an *in vivo* xenograft model. In addition, KLG siRNA combined with DTX was more effective in the treatment of CRPC than DTX monotherapy. Therefore, we determined that sensitivity to DTX may be increased after treatment with KLG siRNA.

To our knowledge, there are only three reports on the association between KLG and cancer development (9,23,24). The present study is the first report of the relationship between

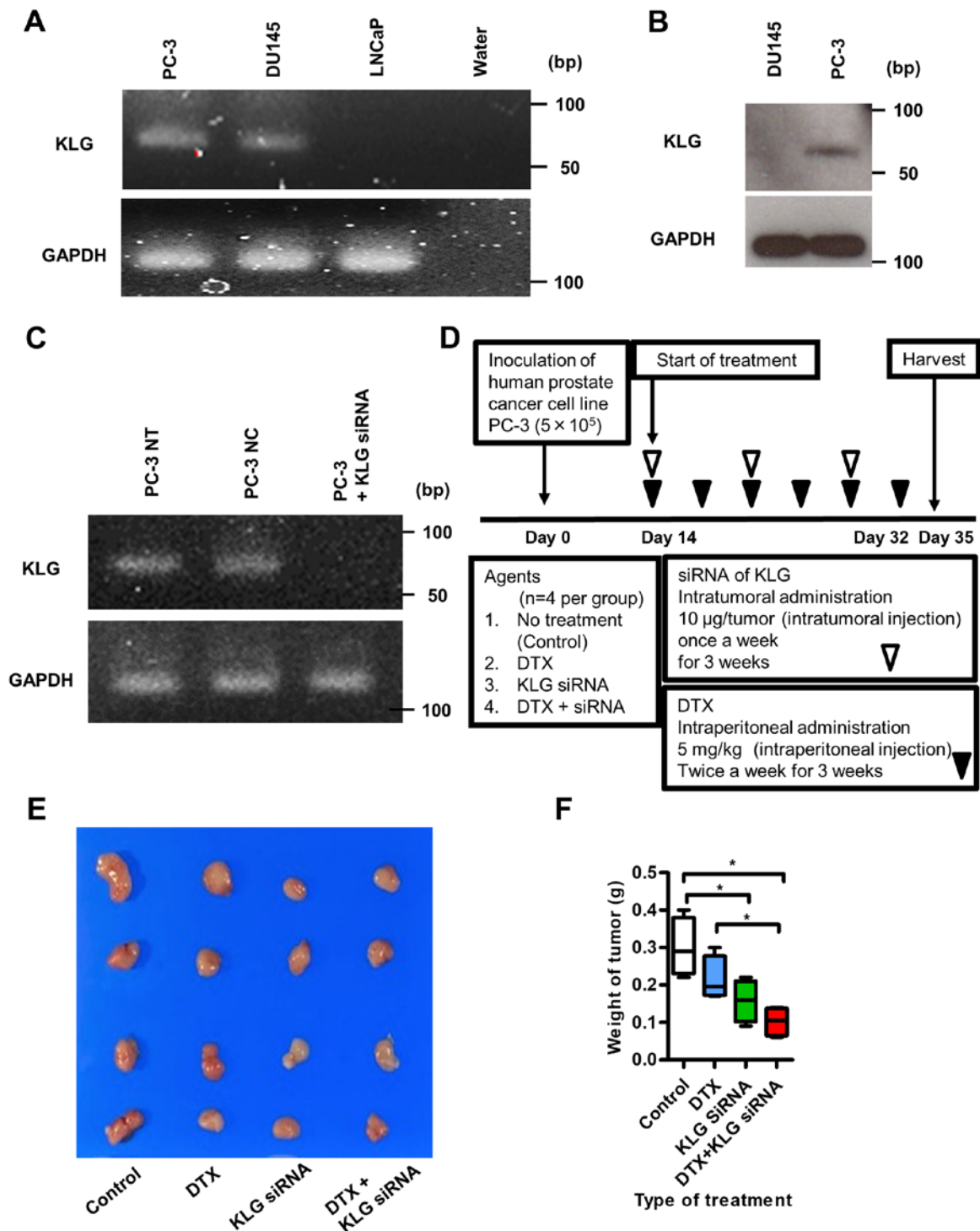


Figure 4. Reverse transcription PCR and western blot analysis of KLG in PC-3 cells, and xenograft model. (A) Reverse transcription-PCR analysis revealed that PC-3 and DU145 cells expressed KLG RNA. (B) Western blot analysis showed that KLG protein was expressed in PC-3 cells. (C) Expression of KLG was knocked down with KLG siRNA as shown in the reverse transcription-PCR analysis. (D) Schematic diagram illustrating the study workflow. Mice were injected with PC-3 cells ( $5 \times 10^5$ /tumor) together with Matrigel. After 2 weeks of inoculation, mice were randomly divided into four groups [n=4 per group; control (no treatment), DTX, KLG siRNA and DTX + KLG siRNA]. Mice were treated for 3 weeks. After 5 weeks of inoculation, mice were euthanized and xenografts were harvested. (E) Subcutaneous tumors were removed from the mouse xenograft model. (F) Tumor weight was significantly lower in the KLG siRNA and KLG siRNA + DTX treated groups than in the control and DTX only groups. Kruskal-Wallis test was conducted. \* $P < 0.05$ . KLG,  $\gamma$ -Klotho; siRNA, small interfering RNA; DTX, docetaxel; siRNA, small interfering RNA.

KLG and prostate cancer. Our previous report describes the effects of KLG on tumor growth, including promotion of cell proliferation, inhibition of apoptosis, and enhancement of the EMT in human bladder cancer (23). Kim *et al* reported that KLG is an important factor in cell proliferation by activating

ERK1/2 signaling pathway in colon cancer (9). Trošt *et al* reported that high expression level of KLG correlates with poor disease progression and that *in vitro* analysis indicated that KLG was a necessary factor for cell survival; depletion of KLG resulted in cell cycle arrest, apoptosis, and persistent



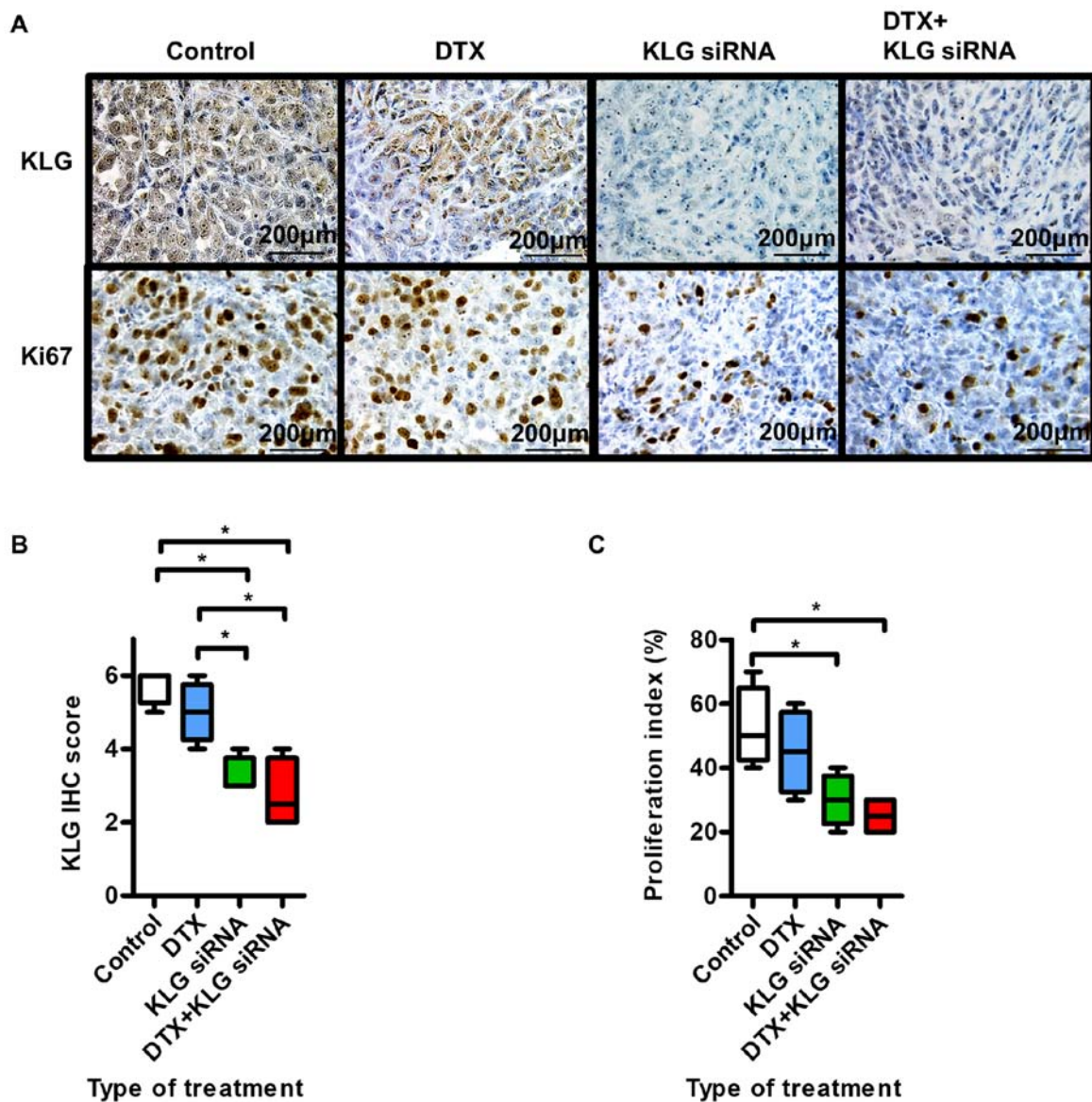


Figure 5. Effect of KLG siRNA on subcutaneous tumor. (A) Immunohistochemistry of tumor with KLG and Ki-67 antibodies. (B) Treatment with KLG siRNA led to downregulation of KLG, as expected. (C) In the KLG siRNA and KLG siRNA + DTX treated groups, the proliferation index was lower than in the control and DTX only groups. Mann-Whitney U test was conducted. \* $P < 0.05$ . KLG,  $\gamma$ -Klotho; siRNA, small interfering RNA; DTX, docetaxel.

activation of the ERK1/2 signaling pathway in patients with triple-negative breast cancer (24). Therefore, we speculate that KLG plays a role in the promotion of prostate cancer growth and that the balance of existing KLGs affects activation of various pathways, including FGF/FGFR signaling.

In human lung cancer, increasing prevalence of cisplatin-resistant cancer has become a major problem. Wang *et al* demonstrated that KLA could improve the resistance of lung cancer cells to cisplatin (31). These authors suggested that KLA could inhibit the PI3K/Akt pathway and alleviate the resistance of lung cancer cells to cisplatin. In hepatocellular carcinoma (HCC), FGF19/FGFR4 signaling had an effect on HCC resistance to sorafenib therapy through the inhibition of reactive oxygen species generation and apoptosis (32). We suppose that KLGs possibly have a potent effect in lowering resistance to anti-tumor drugs.

The prognostic factors of OS in patients with CRPC have been discussed. Some studies have claimed that various

factors have been identified as independent prognostic factors of OS, such as age, neutrophil-to-lymphocyte ratio, serum PSA level at the start of chemotherapy, and anemia (33). In this study, KLG was found to be a prognostic factor for patients with CRPC in multivariate analysis. Thus, KLG may serve as a new prognostic factor in patients with CRPC. In addition, KLG was a predictor of resistance to DTX among patients with CRPC in this study. Overexpression of KLG in tissues from biopsy may be beneficial for patients if they are concurrently prescribed drugs that suppress KLG signaling or if they are not treated with DTX but with other agents, such as cabazitaxel, abiraterone or enzalutamide. KLG may be a new biomarker for diagnosis and/or a therapeutic target in patients with CRPC.

This study has some limitations. First, we only used an *in vivo* xenograft model in this study. As an ectopic model differs from the actual reaction in the human body, further investigation using an orthotopic model is necessary. Second,

we have not been able to elucidate enough mechanism of signaling pathway and cell cycle. We did not evaluate the relationship between KLG and FGF/FGFR signaling in this study. Further experiments are needed to clarify which pathway in FGF/FGFR signaling is actually involved in the prostate tumorigenesis. And we should evaluate cell proliferation using not only Ki67 but also CD44, because CD44 are noted as a surface marker for cancer stem cells. We consider these experiments as our future studies. Third, our sample size was small with only 36 patients with CRPC. There were significant differences in PSA at diagnosis and proportion of patients with lymph node metastasis between low and high expression groups of KLG. This may be a bias of this study. It is necessary to conduct the analysis with a larger cohort of CRPC patients. Fourth, we only used tissues collected from biopsy at the time of diagnosis as human samples in this study. Tissues obtained from biopsy may be degenerated, in comparison with the actual nature of tissues in CRPC, owing to modification caused by treatment, such as hormone and radiation therapy. Further investigation using actual CRPC tissues, such as those from metastatic lesions, are needed.

In conclusion, our findings indicated that KLG has an important role in prostate tumorigenesis. The expression level of KLG was associated with cell proliferation of cancer cells *in vivo* by Ki-67 staining. In addition, KLG could be a predictor of resistance to DTX and a prognostic factor for mortality. KLG may become a new biomarker for diagnosis and/or a therapeutic target in patients with CRPC.

### Acknowledgements

The authors would like to thank Mrs. Aya Asano (Department of Pathology, Nara Medical University) for providing substantial help with intratumoral treatment.

### Funding

No funding was received.

### Availability of data and materials

The datasets used and/or analyzed during the current study are available from the corresponding author on reasonable request.

### Authors' contributions

KO, MM, SH, YN and KF conceived the study. KO collected samples and drafted the manuscript. KO, KI, YM and SO conducted the laboratory work. KO, YT and NT performed the statistical analysis. All authors were involved in the preparation and revision of the manuscript, and approved the final manuscript.

### Ethics approval and consent to participate

The Ethics Committee of Nara Medical University approved the patient study protocol (reference ID: 1256). Written informed consent was obtained from all participants. The animal study was approved by The Animal Facility Committee at Nara Medical University (protocol ID: 11896).

### Patient consent for publication

Not applicable.

### Competing interests

The authors declare that they have no competing interests.

### References

- Bray F, Ferlay J, Soerjomataram I, Siegel RL, Torre LA and Jemal A: Global cancer statistics 2018: GLOBOCAN estimates of incidence and mortality worldwide for 36 cancers in 185 countries. *CA Cancer J Clin* 68: 394-424, 2018.
- Lowrance WT, Roth BJ, Kirkby E, Murad MH and Cookson MS: Castration-resistant prostate cancer: AUA guideline amendment 2015. *J Urol* 195: 1444-1452, 2016.
- Tannock IF, de Wit R, Berry WR, Horti J, Pluzanska A, Chi KN, Oudard S, Théodore C, James ND, Turesson I, *et al*: Docetaxel plus prednisone or mitoxantrone plus prednisone for advanced prostate cancer. *N Engl J Med* 351: 1502-1512, 2004.
- Petrylak DP, Tangen CM, Hussain MH, Lara PN Jr, Jones JA, Taplin ME, Burch PA, Berry D, Moinpour C, Kohli M, *et al*: Docetaxel and estramustine compared with mitoxantrone and prednisone for advanced refractory prostate cancer. *N Engl J Med* 351: 1513-1520, 2004.
- Carroll PR, Parsons JK, Andriole G, Bahnson RR, Castle EP, Catalona WJ, Dahl DM, Davis JW, Epstein JI, Etzioni RB, *et al*: NCCN guidelines insights: Prostate cancer early detection, version 2.2016. *J Natl Compr Canc Netw* 14: 509-519, 2016.
- Kuro-o M, Matsumura Y, Aizawa H, Kawaguchi H, Suga T, Utsugi T, Ohyama Y, Kurabayashi M, Kaname T, Kume E, *et al*: Mutation of the mouse klotho gene leads to a syndrome resembling ageing. *Nature* 390: 45-51, 1997.
- Ito S, Fujimori T, Hayashizaki Y and Nabeshima Y: Identification of a novel mouse membrane-bound family 1 glycosidase-like protein, which carries an atypical active site structure. *Biochim Biophys Acta* 1576: 341-345, 2002.
- Kurosu H and Kuro-O M: The Klotho gene family as a regulator of endocrine fibroblast growth factors. *Mol Cell Endocrinol* 299: 72-78, 2009.
- Kim J, Eskiocak U, Stadler G, Lou Z, Kuro-o M, Shay JW and Wright WE: Short hairpin RNA screen indicates that Klotho beta/FGF19 protein overcomes stasis in human colonic epithelial cells. *J Biol Chem* 286: 43294-43300, 2011.
- Tiong KH, Mah LY and Leong CO: Functional roles of fibroblast growth factor receptors (FGFRs) signaling in human cancers. *Apoptosis* 18: 1447-1468, 2013.
- Schlessinger J: Common and distinct elements in cellular signaling via EGF and FGF receptors. *Science* 306: 1506-1507, 2004.
- Miyake M, Ishii M, Koyama N, Kawashima K, Kodama T, Anai S, Fujimoto K, Hirao Y and Sugano K: 1-tert-butyl-3-[6-(3,5-dimethoxy-phenyl)-2-(4-diethylamino-butylamino)-pyrido [2,3-d]pyrimidin-7-yl]-urea (PD173074), a selective tyrosine kinase inhibitor of fibroblast growth factor receptor-3 (FGFR3), inhibits cell proliferation of bladder cancer carrying the FGFR3 gene mutation along with up-regulation of p27/Kipl and G1/G0 arrest. *J Pharmacol Exp Ther* 332: 795-802, 2010.
- Zhou X and Wang X: Klotho: A novel biomarker for cancer. *J Cancer Res Clin Oncol* 141: 961-969, 2015.
- Wolf I, Levanon-Cohen S, Bose S, Ligumsky H, Sredni B, Kanety H, Kuro-o M, Karlan B, Kaufman B, Koeffler HP and Rubinek T: Klotho: A tumor suppressor and a modulator of the IGF-1 and FGF pathways in human breast cancer. *Oncogene* 27: 7094-7105, 2008.
- Chen B, Wang X, Zhao W and Wu J: Klotho inhibits growth and promotes apoptosis in human lung cancer cell line A549. *J Exp Clin Cancer Res* 29: 99, 2010.
- Doi S, Zou Y, Togao O, Pastor JV, John GB, Wang L, Shiizaki K, Gotschall R, Schiavi S, Yorioka N, *et al*: Klotho inhibits transforming growth factor-beta1 (TGF-beta1) signaling and suppresses renal fibrosis and cancer metastasis in mice. *J Biol Chem* 286: 8655-8665, 2011.
- Zhu Y, Xu L, Zhang J, Xu W, Liu Y, Yin H, Lv T, An H, Liu L, He H, *et al*: Klotho suppresses tumor progression via inhibiting PI3K/Akt/GSK3 $\beta$ /Snail signaling in renal cell carcinoma. *Cancer Sci* 104: 663-671, 2013.

18. Xie B, Zhou J, Yuan L, Ren F, Liu DC, Li Q and Shu G: Epigenetic silencing of Klotho expression correlates with poor prognosis of human hepatocellular carcinoma. *Hum Pathol* 44: 795-801, 2013.
19. Poh W, Wong W, Ong H, Aung MO, Lim SG, Chua BT and Ho HK: Klotho-beta overexpression as a novel target for suppressing proliferation and fibroblast growth factor receptor-4 signaling in hepatocellular carcinoma. *Mol Cancer* 11: 14, 2012.
20. Feng S, Dakhova O, Creighton CJ and Ittmann M: Endocrine fibroblast growth factor FGF19 promotes prostate cancer progression. *Cancer Res* 73: 2551-2562, 2013.
21. Ye X, Guo Y, Zhang Q, Chen W, Hua X, Liu W, Yang Y and Chen G: bKlotho suppresses tumor growth in hepatocellular carcinoma by regulating Akt/GSK-3 $\beta$ /cyclin D1 signaling pathway. *PLoS One* 8: e55615, 2013.
22. Hori S, Miyake M, Onishi S, Tatsumi Y, Morizawa Y, Nakai Y, Anai S, Tanaka N and Fujimoto K: Clinical significance of  $\alpha$ - and  $\beta$ -Klotho in urothelial carcinoma of the bladder. *Oncol Rep* 36: 2117-2125, 2016.
23. Hori S, Miyake M, Tatsumi Y, Morizawa Y, Nakai Y, Onishi S, Onishi K, Iida K, Gotoh D, Tanaka N and Fujimoto K: Gamma-Klotho exhibits multiple roles in tumor growth of human bladder cancer. *Oncotarget* 9: 19508-19524, 2018.
24. Trošt N, Peña-Llopis S, Koirala S, Stojan J, Potts PR, Fon Tacer K and Martinez ED:  $\gamma$ Klotho is a novel marker and cell survival factor in a subset of triple negative breast cancers. *Oncotarget* 7: 2611-2628, 2016.
25. Abramovitz L, Rubinek T, Ligumsky H, Bose S, Barshack I, Avivi C, Kaufman B and Wolf I: KL1 internal repeat mediates klotho tumor suppressor activities and inhibits bFGF and IGF-I signaling in pancreatic cancer. *Clin Cancer Res* 17: 4254-4266, 2011.
26. Fon Tacer K, Bookout AL, Ding X, Kurosu H, John GB, Wang L, Goetz R, Mohammadi M, Kuro-o M, Mangelsdorf DJ and Kliewer SA: Research resource: Comprehensive expression atlas of the fibroblast growth factor system in adult mouse. *Mol Endocrinol* 24: 2050-2064, 2010.
27. Nagamatsu H, Teishima J, Goto K, Shikuma H, Kitano H, Shoji K, Inoue S and Matsubara A: FGF19 promotes progression of prostate cancer. *Prostate* 75: 1092-1101, 2015.
28. Anai S, Goodison S, Shiverick K, Hirao Y, Brown BD and Rosser CJ: Knock-down of Bcl-2 by antisense oligodeoxynucleotides induces radiosensitization and inhibition of angiogenesis in human PC-3 prostate tumor xenografts. *Mol Cancer Ther* 6: 101-111, 2007.
29. Ito T, Shimada Y, Kan T, David S, Cheng Y, Mori Y, Agarwal R, Paun B, Jin Z, Olaru A, *et al*: Pituitary tumor-transforming 1 increases cell motility and promotes lymph node metastasis in esophageal squamous cell carcinoma. *Cancer Res* 68: 3214-3224, 2008.
30. Li LT, Jiang G, Chen Q and Zheng JN: Ki67 is a promising molecular target in the diagnosis of cancer (Review). *Mol Med Rep* 11: 1566-1572, 2015.
31. Wang Y, Chen L, Huang G, He D, He J, Xu W, Zou C, Zong F, Li Y, Chen B, *et al*: Klotho sensitizes human lung cancer cell line to cisplatin via PI3k/Akt pathway. *PLoS One* 8: e57391, 2013.
32. Gao L, Wang X, Tang Y, Huang S, Hu CA and Teng Y: FGF19/FGFR4 signaling contributes to the resistance of hepatocellular carcinoma to sorafenib. *J Exp Clin Cancer Res* 36: 8, 2017.
33. Cao J, Zhu X, Zhao X, Li XF and Xu R: Neutrophil-to-lymphocyte ratio predicts PSA response and prognosis in prostate cancer: A systematic review and meta-analysis. *PLoS One* 11: e0158770, 2016.



This work is licensed under a Creative Commons Attribution-NonCommercial-NoDerivatives 4.0 International (CC BY-NC-ND 4.0) License.